

Data Path : Z:\voasrv\HPCHEM1\MSVOA_X\Data\VX092325\
 Data File : VX047759.D
 Acq On : 24 Sep 2025 08:01
 Operator : JC/MD
 Sample : Q3127-07
 Misc : 5.0mL/MSVOA_X/WATER
 ALS Vial : 48 Sample Multiplier: 1

Instrument :
 MSVOA_X
 ClientSampleId :
 RE135D2-20250915

Quant Time: Sep 24 08:21:48 2025
 Quant Method : Z:\voasrv\HPCHEM1\MSVOA_X\Method\82X091625W.M
 Quant Title : SW846 8260
 QLast Update : Wed Sep 17 06:39:58 2025
 Response via : Initial Calibration

Compound	R.T.	QIon	Response	Conc	Units	Dev(Min)

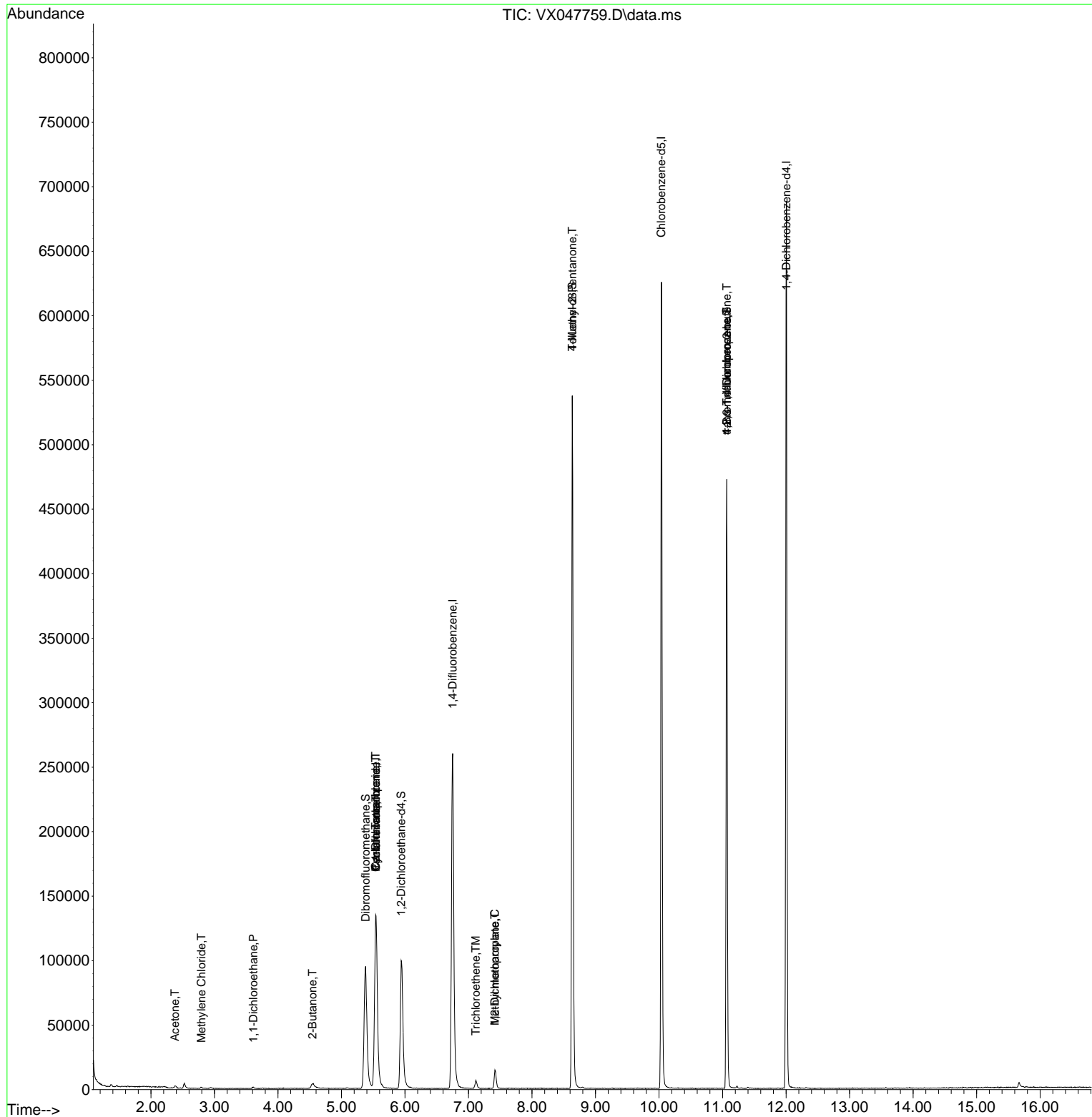
Internal Standards						
1) Pentafluorobenzene	5.543	168	137795	50.000	ug/l	0.00
34) 1,4-Difluorobenzene	6.751	114	288279	50.000	ug/l	0.00
63) Chlorobenzene-d5	10.037	117	290372	50.000	ug/l	0.00
72) 1,4-Dichlorobenzene-d4	12.006	152	143868	50.000	ug/l	0.00
System Monitoring Compounds						
33) 1,2-Dichloroethane-d4	5.940	65	108570	49.500	ug/l	0.00
Spiked Amount	50.000	Range 78 - 117	Recovery	=	99.000%	
35) Dibromofluoromethane	5.379	113	93295	48.255	ug/l	0.00
Spiked Amount	50.000	Range 75 - 124	Recovery	=	96.520%	
50) Toluene-d8	8.634	98	322124	48.152	ug/l	0.00
Spiked Amount	50.000	Range 92 - 112	Recovery	=	96.300%	
62) 4-Bromofluorobenzene	11.067	95	133567	52.608	ug/l	0.00
Spiked Amount	50.000	Range 83 - 123	Recovery	=	105.220%	
Target Compounds						
					Qvalue	
16) Acetone	2.379	43	2515	2.637	ug/l #	84
20) Methylene Chloride	2.794	84	461	0.228	ug/l #	67
24) 1,1-Dichloroethane	3.611	63	1339	0.385	ug/l #	81
25) 2-Butanone	4.544	43	330	0.277	ug/l #	50
31) Cyclohexane	5.543	56	2904	1.002	ug/l #	1
36) 1,1-Dichloropropene	5.537	75	11713	4.146	ug/l #	50
38) Carbon Tetrachloride	5.537	117	14548	4.740	ug/l #	19
44) Trichloroethene	7.116	130	2570	1.239	ug/l	96
45) 1,2-Dichloropropane	7.415	63	6214	2.828	ug/l	95
48) Methyl methacrylate	7.415	41	3573	1.446	ug/l #	37
51) 4-Methyl-2-Pentanone	8.634	43	1496	0.544	ug/l #	1
76) 1,2,3-Trichloropropane	11.067	75	70000	24.031	ug/l #	40
81) trans-1,4-Dichloro-2-b...	11.067	75	70000	61.283	ug/l #	8

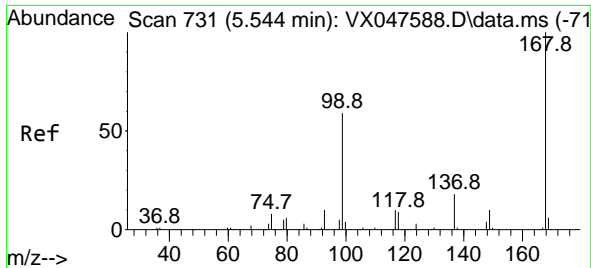
(#) = qualifier out of range (m) = manual integration (+) = signals summed

Data Path : Z:\voasrv\HPCHEM1\MSVOA_X\Data\VX092325\
 Data File : VX047759.D
 Acq On : 24 Sep 2025 08:01
 Operator : JC/MD
 Sample : Q3127-07
 Misc : 5.0mL/MSVOA_X/WATER
 ALS Vial : 48 Sample Multiplier: 1

Instrument :
 MSVOA_X
 ClientSampleId :
 RE135D2-20250915

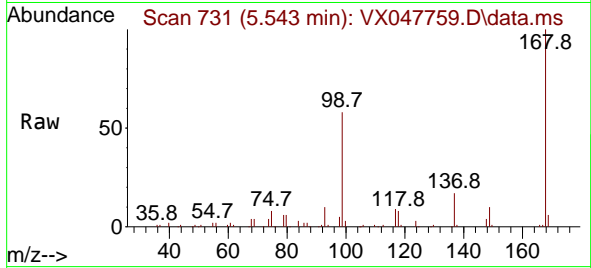
Quant Time: Sep 24 08:21:48 2025
 Quant Method : Z:\voasrv\HPCHEM1\MSVOA_X\Method\82X091625W.M
 Quant Title : SW846 8260
 QLast Update : Wed Sep 17 06:39:58 2025
 Response via : Initial Calibration



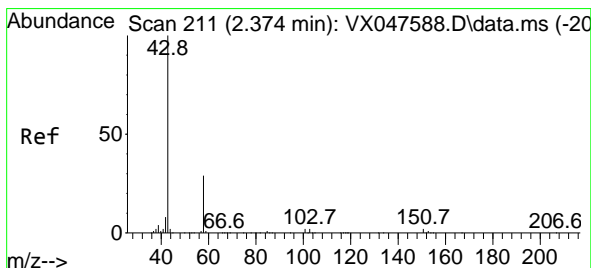
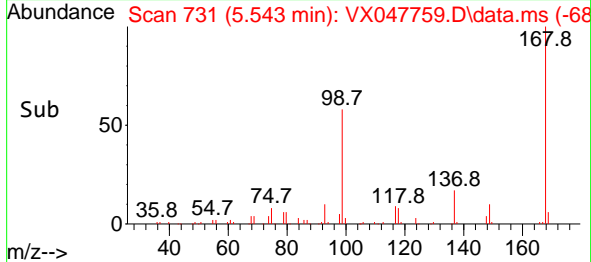
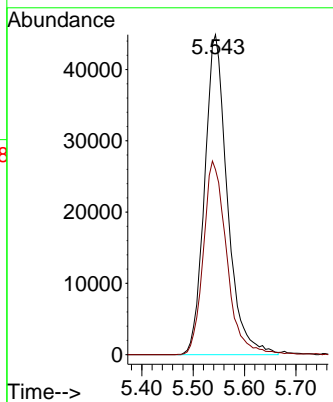


#1
 Pentafluorobenzene
 Concen: 50.000 ug/l
 RT: 5.543 min Scan# 71
 Delta R.T. -0.001 min
 Lab File: VX047759.D
 Acq: 24 Sep 2025 08:01

Instrument :
 MSVOA_X
 ClientSampleId :
 RE135D2-20250915

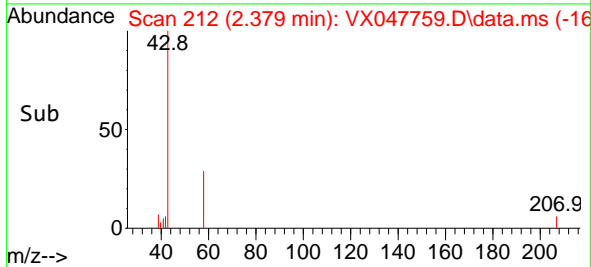
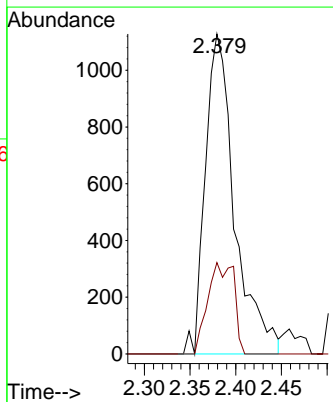
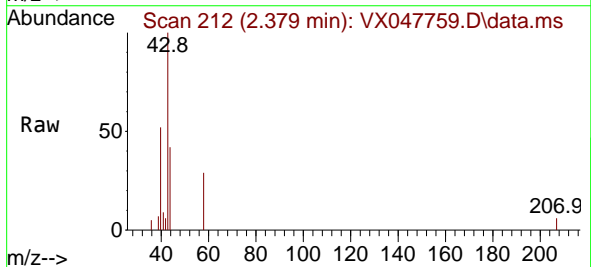


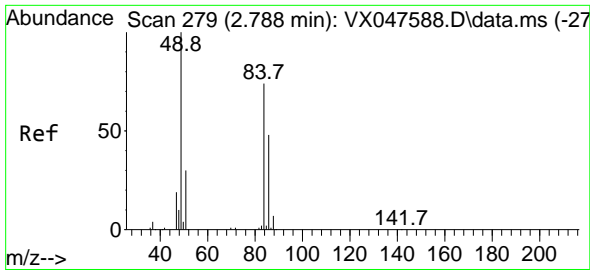
Tgt Ion:168 Resp: 137795
 Ion Ratio Lower Upper
 168 100
 99 57.7 48.8 73.2



#16
 Acetone
 Concen: 2.637 ug/l
 RT: 2.379 min Scan# 212
 Delta R.T. 0.006 min
 Lab File: VX047759.D
 Acq: 24 Sep 2025 08:01

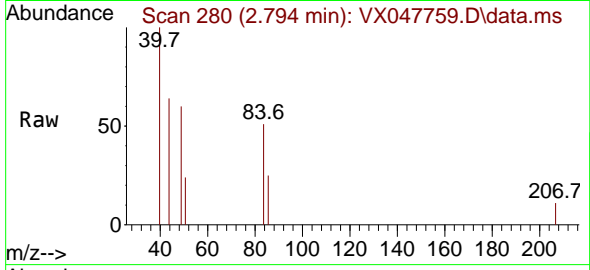
Tgt Ion: 43 Resp: 2515
 Ion Ratio Lower Upper
 43 100
 58 20.8 23.4 35.0#





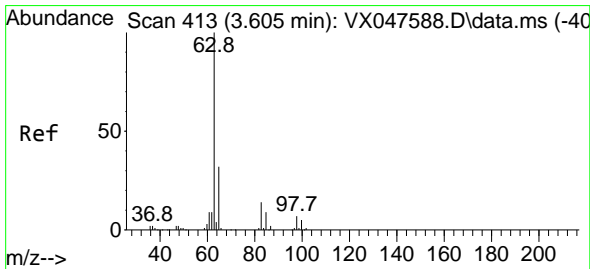
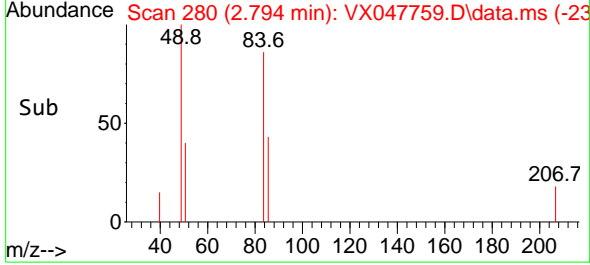
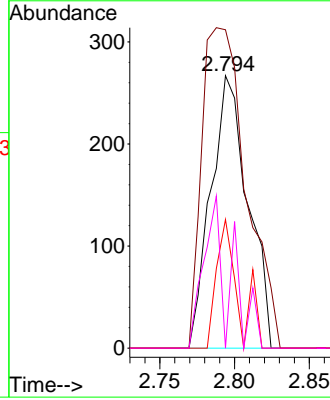
#20
 Methylene Chloride
 Concen: 0.228 ug/l
 RT: 2.794 min Scan# 21
 Delta R.T. 0.006 min
 Lab File: VX047759.D
 Acq: 24 Sep 2025 08:01

Instrument :
 MSVOA_X
 ClientSampleId :
 RE135D2-20250915



Tgt Ion: 84 Resp: 461

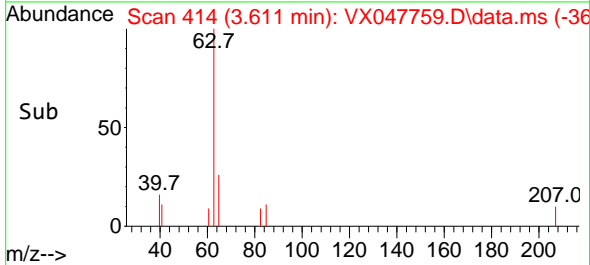
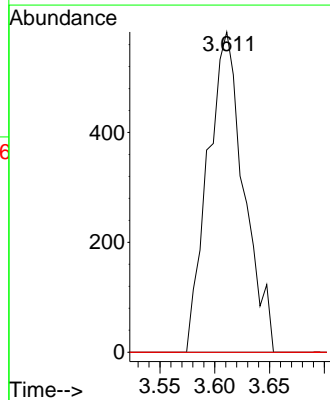
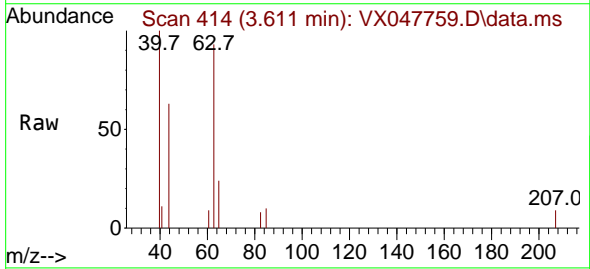
Ion	Ratio	Lower	Upper
84	100		
49	116.9	108.6	162.8
51	47.2	32.6	48.8
86	0.0	52.0	78.0#

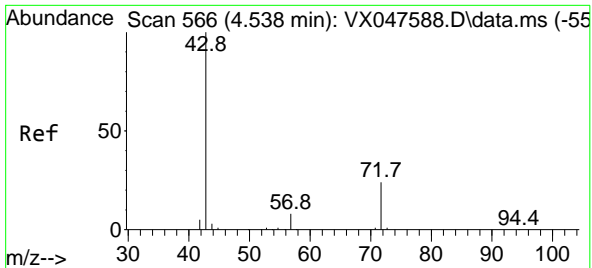


#24
 1,1-Dichloroethane
 Concen: 0.385 ug/l
 RT: 3.611 min Scan# 414
 Delta R.T. 0.006 min
 Lab File: VX047759.D
 Acq: 24 Sep 2025 08:01

Tgt Ion: 63 Resp: 1339

Ion	Ratio	Lower	Upper
63	100		
98	0.0	3.8	11.2#
100	0.0	2.3	6.9#

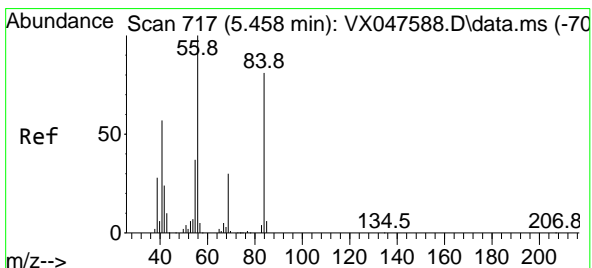
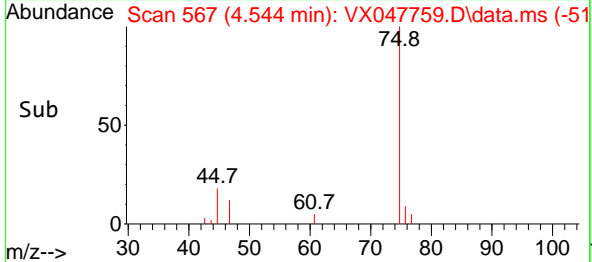
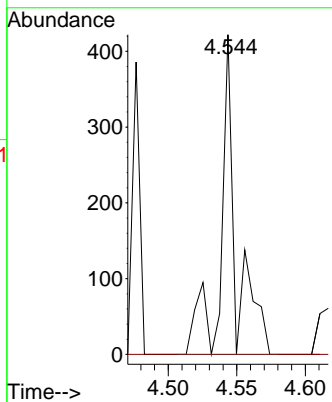
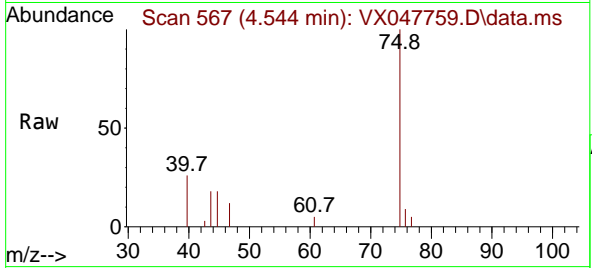




#25
 2-Butanone
 Concen: 0.277 ug/l
 RT: 4.544 min Scan# 50
 Delta R.T. 0.006 min
 Lab File: VX047759.D
 Acq: 24 Sep 2025 08:01

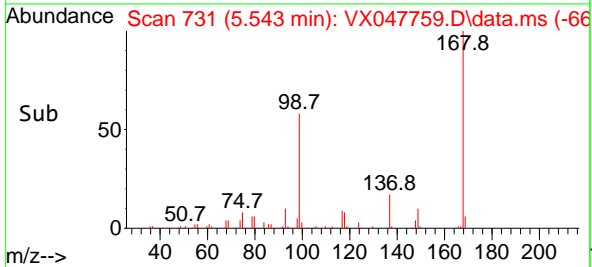
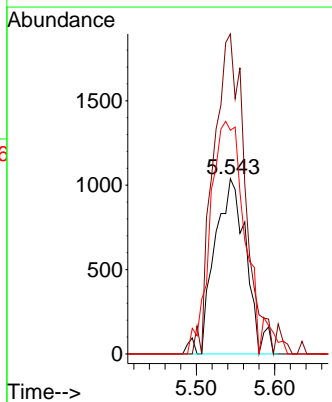
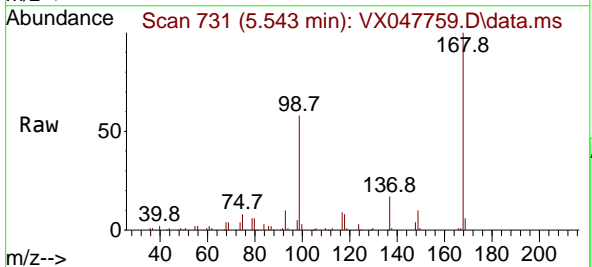
Instrument : MSVOA_X
 ClientSampleId : RE135D2-20250915

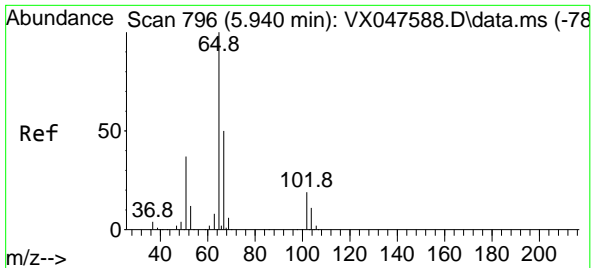
Tgt Ion: 43 Resp: 330
 Ion Ratio Lower Upper
 43 100
 72 0.0 20.1 30.1#



#31
 Cyclohexane
 Concen: 1.002 ug/l
 RT: 5.543 min Scan# 731
 Delta R.T. 0.085 min
 Lab File: VX047759.D
 Acq: 24 Sep 2025 08:01

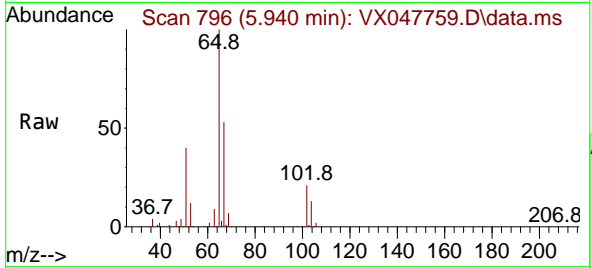
Tgt Ion: 56 Resp: 2904
 Ion Ratio Lower Upper
 56 100
 69 182.7 23.8 35.8#
 84 127.6 64.6 97.0#



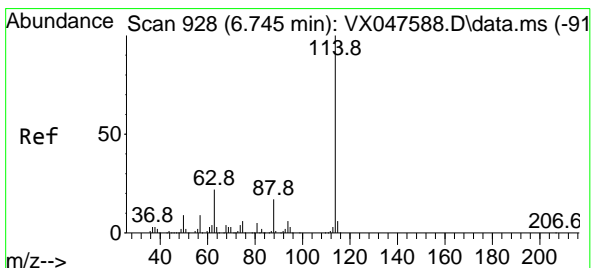
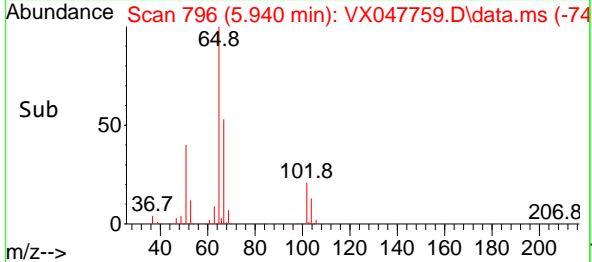
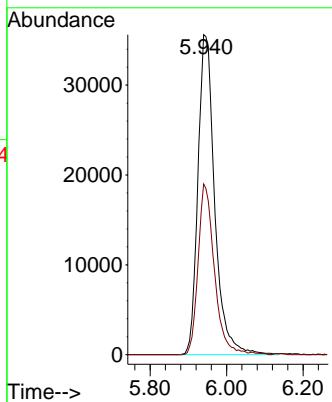


#33
 1,2-Dichloroethane-d4
 Concen: 49.500 ug/l
 RT: 5.940 min Scan# 796
 Delta R.T. -0.000 min
 Lab File: VX047759.D
 Acq: 24 Sep 2025 08:01

Instrument : MSVOA_X
 ClientSampleId : RE135D2-20250915

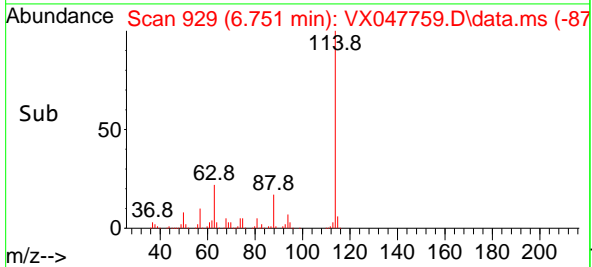
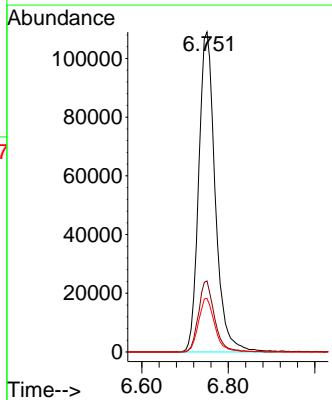
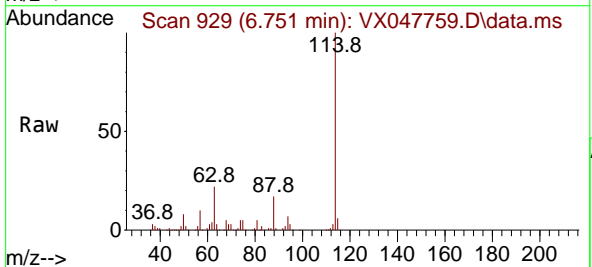


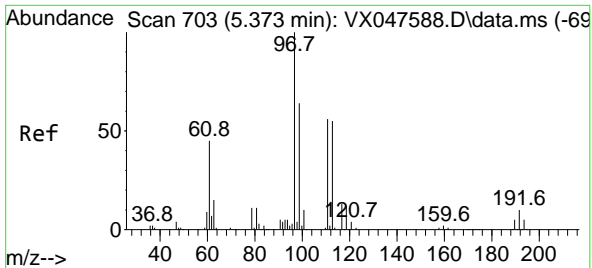
Tgt Ion: 65 Resp: 108570
 Ion Ratio Lower Upper
 65 100
 67 51.5 0.0 103.0



#34
 1,4-Difluorobenzene
 Concen: 50.000 ug/l
 RT: 6.751 min Scan# 929
 Delta R.T. 0.006 min
 Lab File: VX047759.D
 Acq: 24 Sep 2025 08:01

Tgt Ion: 114 Resp: 288279
 Ion Ratio Lower Upper
 114 100
 63 22.2 0.0 44.0
 88 16.8 0.0 34.2

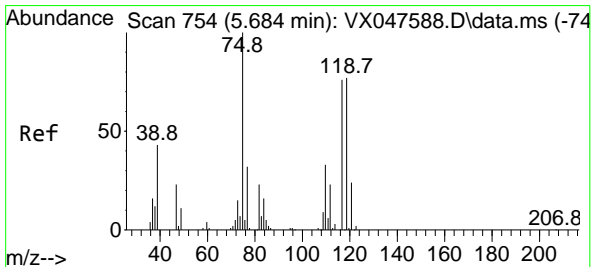
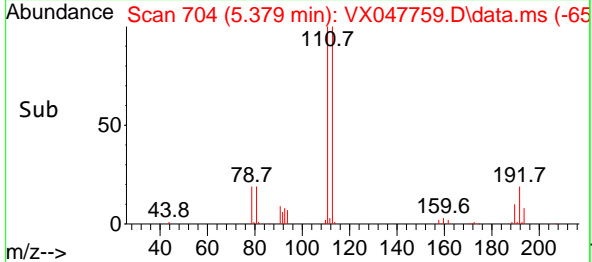
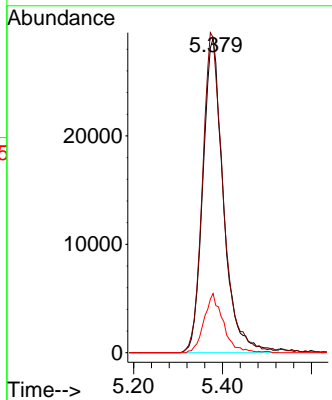
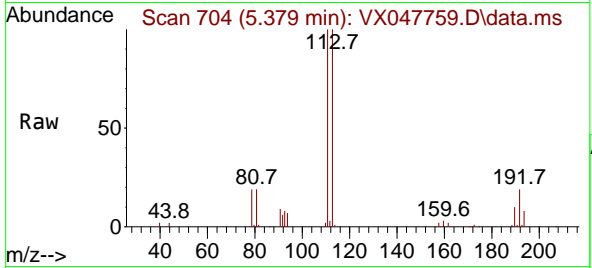




#35
 Dibromofluoromethane
 Concen: 48.255 ug/l
 RT: 5.379 min Scan# 703
 Delta R.T. 0.006 min
 Lab File: VX047759.D
 Acq: 24 Sep 2025 08:01

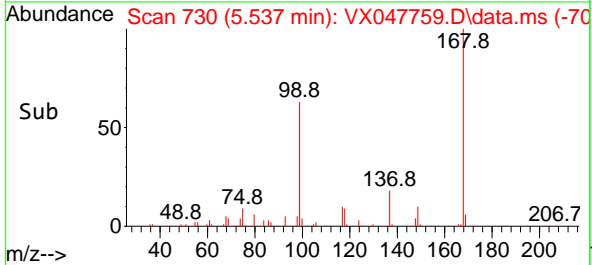
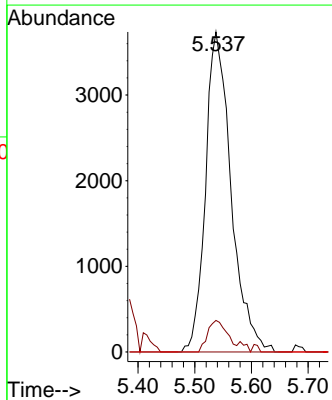
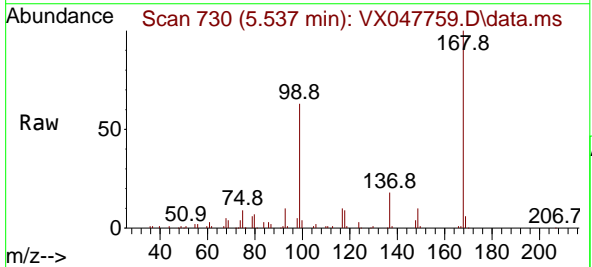
Instrument :
 MSVOA_X
 ClientSampleId :
 RE135D2-20250915

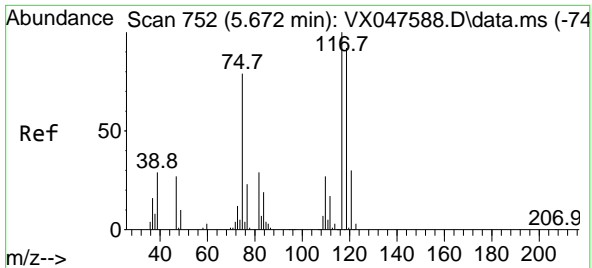
Tgt Ion	Resp	Lower	Upper
113	93295		
100			
111	102.1	80.9	121.3
192	17.6	14.2	21.4



#36
 1,1-Dichloropropene
 Concen: 4.146 ug/l
 RT: 5.537 min Scan# 730
 Delta R.T. -0.147 min
 Lab File: VX047759.D
 Acq: 24 Sep 2025 08:01

Tgt Ion	Resp	Lower	Upper
75	11713		
100			
110	7.5	16.7	50.1#
77	0.0	24.3	36.5#

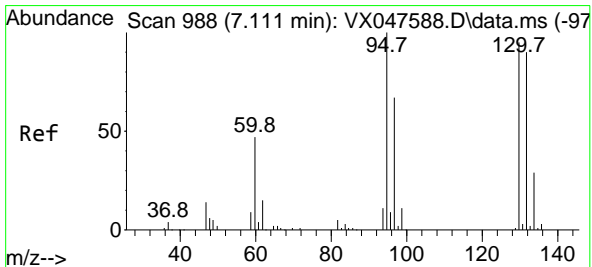
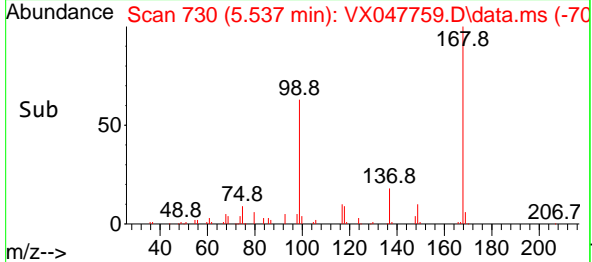
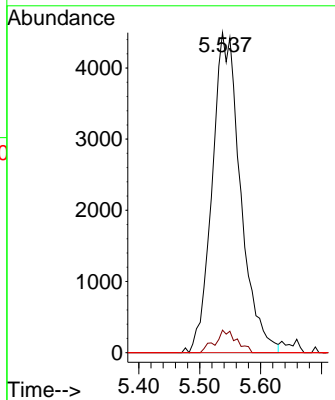
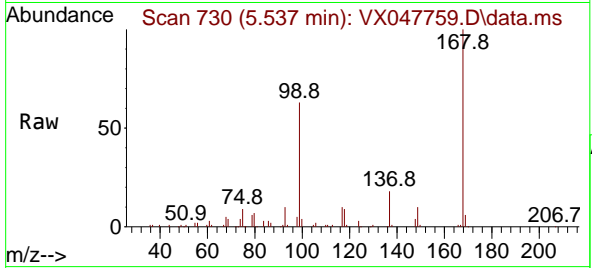




#38
 Carbon Tetrachloride
 Concen: 4.740 ug/l
 RT: 5.537 min Scan# 711
 Delta R.T. -0.134 min
 Lab File: VX047759.D
 Acq: 24 Sep 2025 08:01

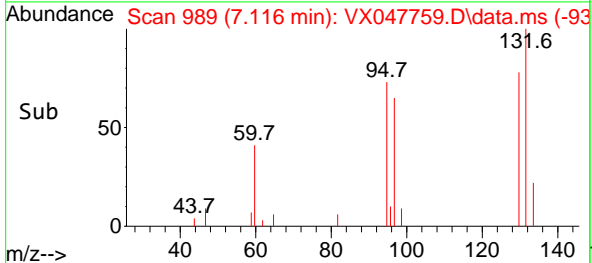
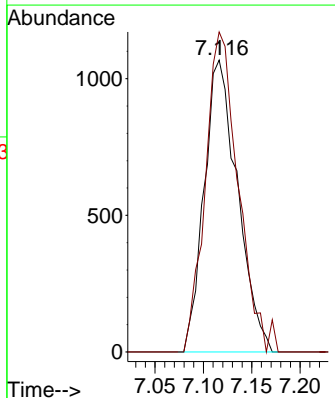
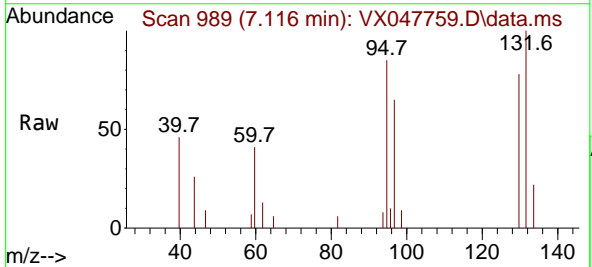
Instrument : MSVOA_X
 ClientSampleId : RE135D2-20250915

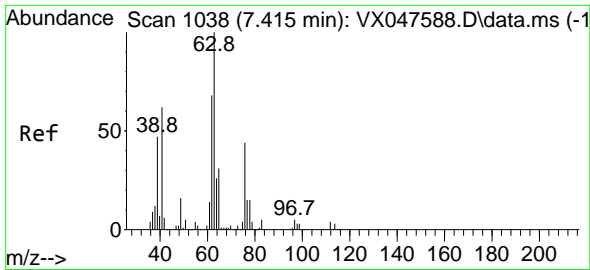
Tgt Ion:117 Resp: 14548
 Ion Ratio Lower Upper
 117 100
 119 7.1 73.4 110.2#
 121 0.0 23.8 35.6#



#44
 Trichloroethene
 Concen: 1.239 ug/l
 RT: 7.116 min Scan# 989
 Delta R.T. 0.006 min
 Lab File: VX047759.D
 Acq: 24 Sep 2025 08:01

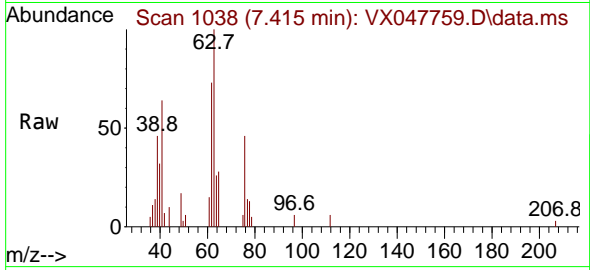
Tgt Ion:130 Resp: 2570
 Ion Ratio Lower Upper
 130 100
 95 109.6 0.0 210.8



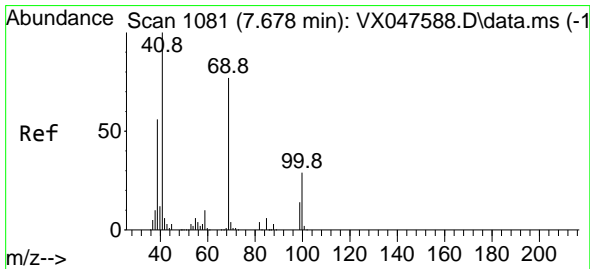
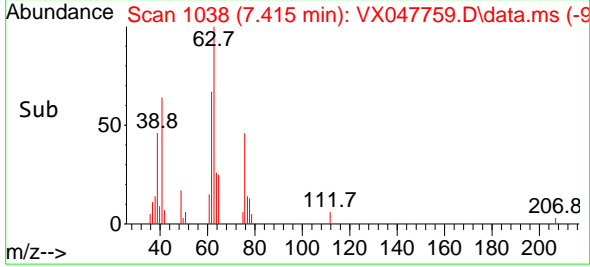
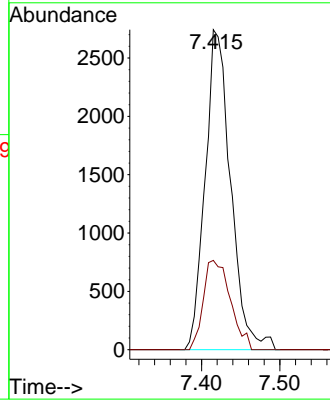


#45
 1,2-Dichloropropane
 Concen: 2.828 ug/l
 RT: 7.415 min Scan# 1038
 Delta R.T. -0.000 min
 Lab File: VX047759.D
 Acq: 24 Sep 2025 08:01

Instrument : MSVOA_X
 ClientSampleId : RE135D2-20250915

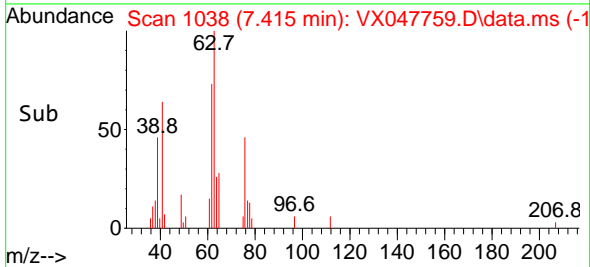
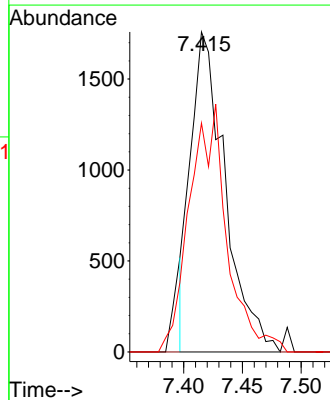
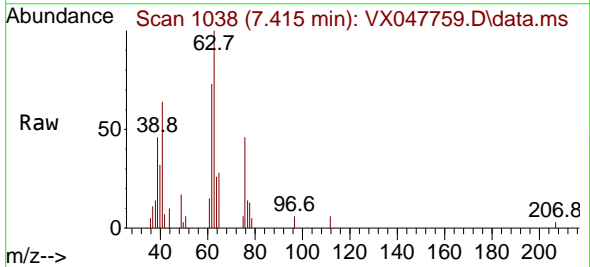


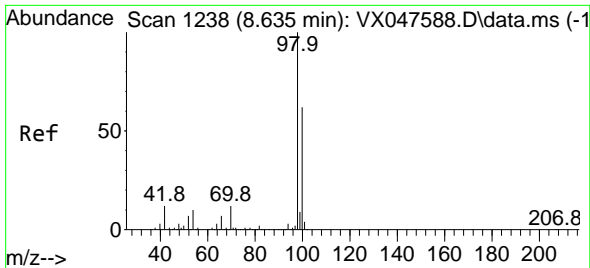
Tgt Ion: 63 Resp: 6214
 Ion Ratio Lower Upper
 63 100
 65 27.9 24.7 37.1



#48
 Methyl methacrylate
 Concen: 1.446 ug/l
 RT: 7.415 min Scan# 1038
 Delta R.T. -0.263 min
 Lab File: VX047759.D
 Acq: 24 Sep 2025 08:01

Tgt Ion: 41 Resp: 3573
 Ion Ratio Lower Upper
 41 100
 69 0.0 61.4 92.2#
 39 77.6 45.8 68.6#

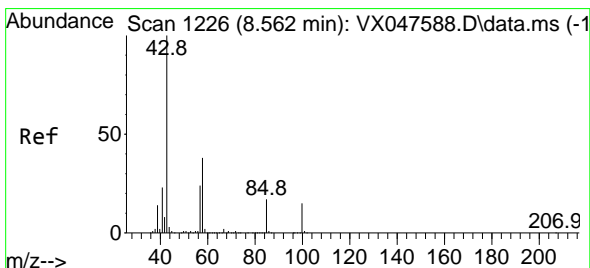
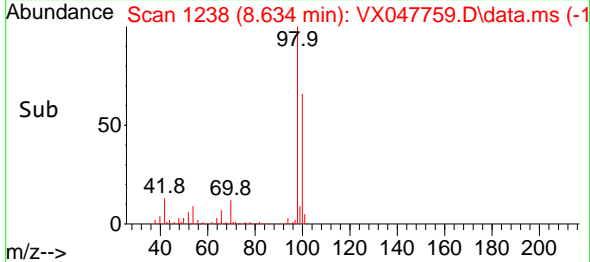
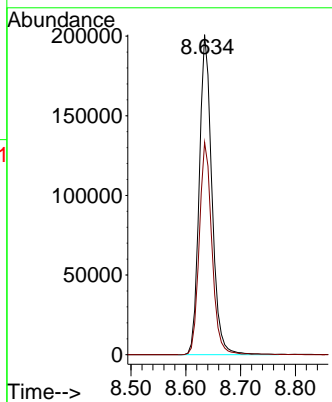
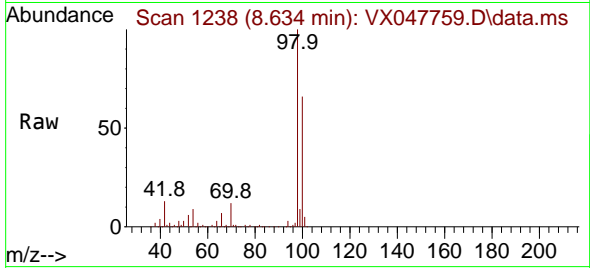




#50
 Toluene-d8
 Concen: 48.152 ug/l
 RT: 8.634 min Scan# 11
 Delta R.T. -0.000 min
 Lab File: VX047759.D
 Acq: 24 Sep 2025 08:01

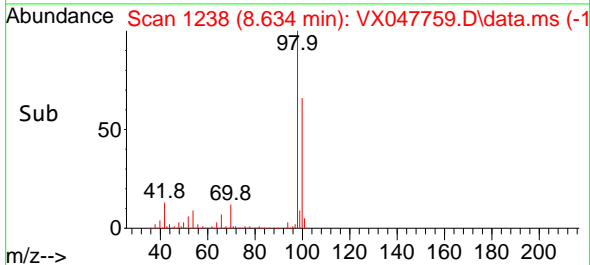
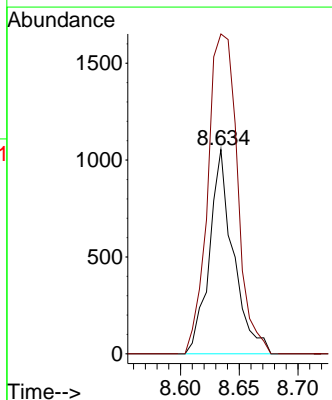
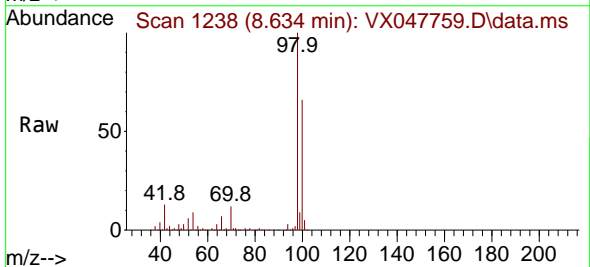
Instrument :
 MSVOA_X
 ClientSampleId :
 RE135D2-20250915

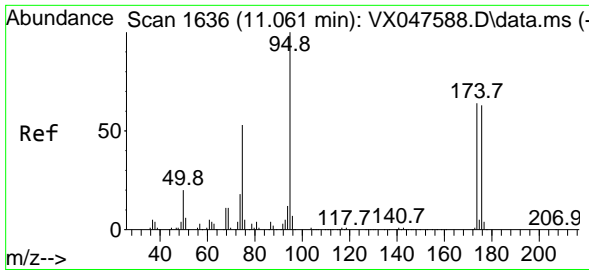
Tgt Ion: 98 Resp: 322124
 Ion Ratio Lower Upper
 98 100
 100 66.5 53.0 79.4



#51
 4-Methyl-2-Pentanone
 Concen: 0.544 ug/l
 RT: 8.634 min Scan# 1238
 Delta R.T. 0.073 min
 Lab File: VX047759.D
 Acq: 24 Sep 2025 08:01

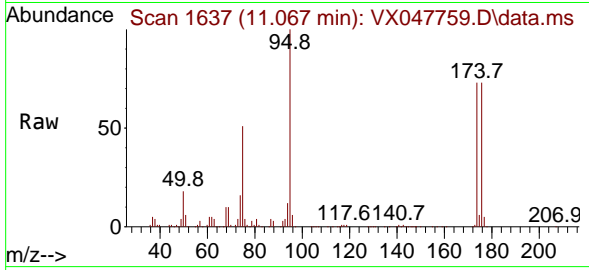
Tgt Ion: 43 Resp: 1496
 Ion Ratio Lower Upper
 43 100
 58 194.1 30.3 45.5#



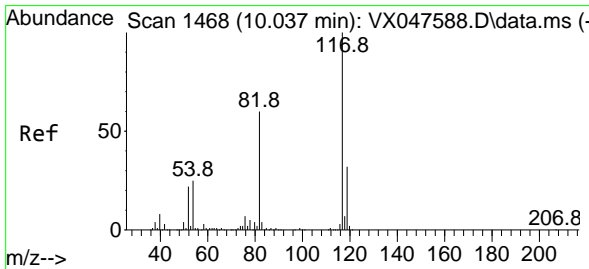
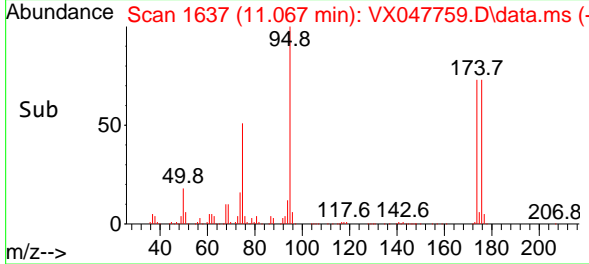
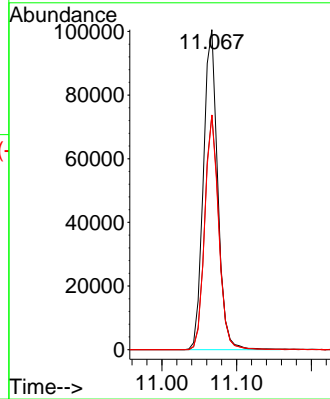


#62
 4-Bromofluorobenzene
 Concen: 52.608 ug/l
 RT: 11.067 min Scan# 1
 Delta R.T. 0.006 min
 Lab File: VX047759.D
 Acq: 24 Sep 2025 08:01

Instrument :
 MSVOA_X
 ClientSampleId :
 RE135D2-20250915

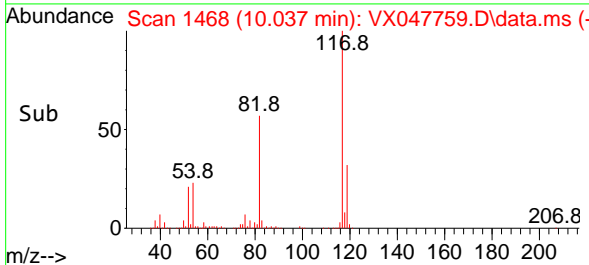
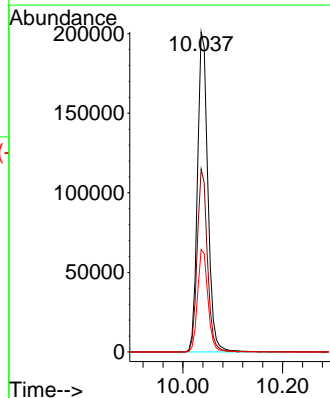
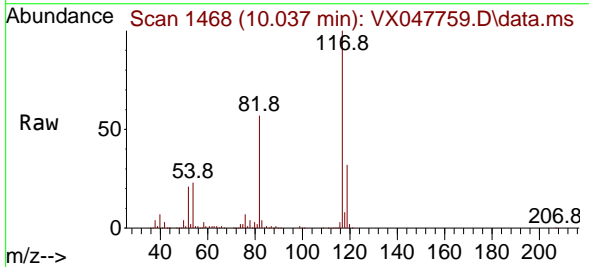


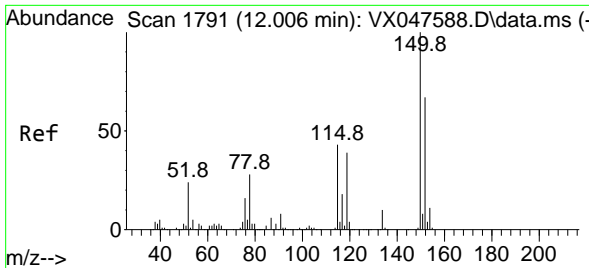
Tgt Ion: 95 Resp: 133567
 Ion Ratio Lower Upper
 95 100
 174 72.4 0.0 141.6
 176 71.2 0.0 138.4



#63
 Chlorobenzene-d5
 Concen: 50.000 ug/l
 RT: 10.037 min Scan# 1468
 Delta R.T. -0.000 min
 Lab File: VX047759.D
 Acq: 24 Sep 2025 08:01

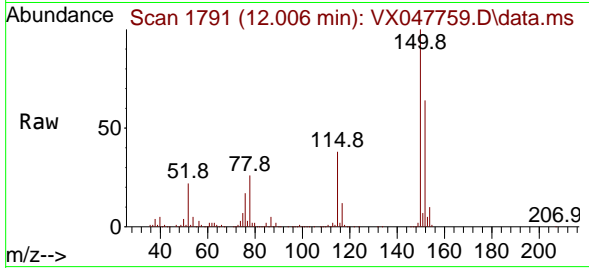
Tgt Ion: 117 Resp: 290372
 Ion Ratio Lower Upper
 117 100
 82 57.1 47.8 71.6
 119 32.0 25.2 37.8



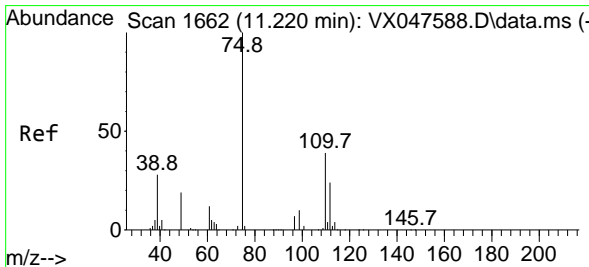
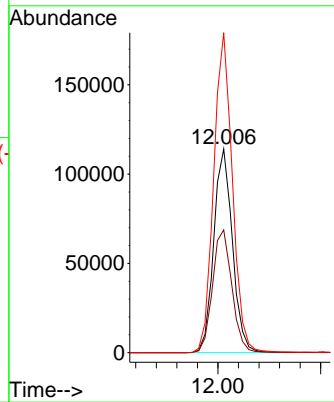
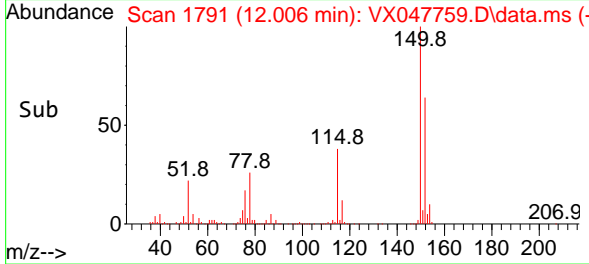


#72
 1,4-Dichlorobenzene-d4
 Concen: 50.000 ug/l
 RT: 12.006 min Scan# 11
 Delta R.T. -0.000 min
 Lab File: VX047759.D
 Acq: 24 Sep 2025 08:01

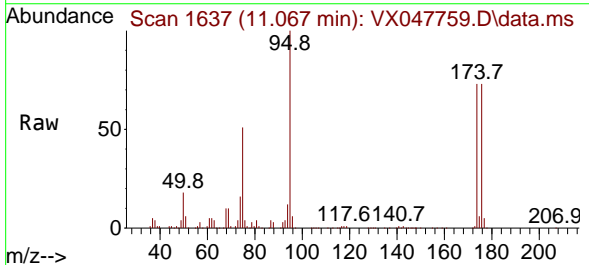
Instrument :
 MSVOA_X
 ClientSampleId :
 RE135D2-20250915



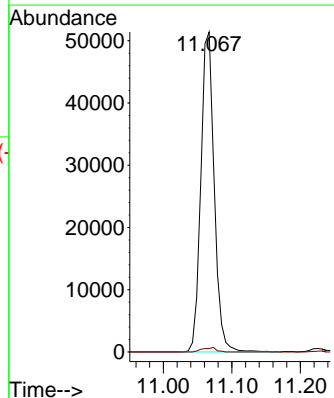
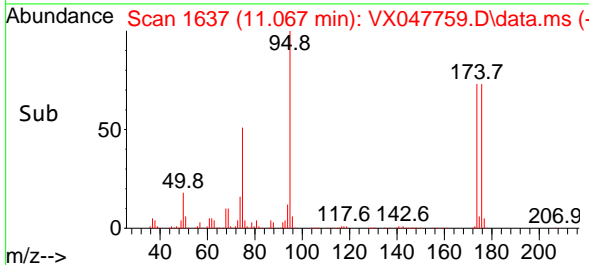
Tgt Ion:152 Resp: 143868
 Ion Ratio Lower Upper
 152 100
 115 62.5 44.9 134.5
 150 157.6 0.0 352.0

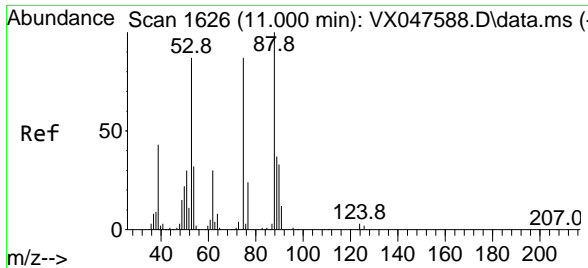


#76
 1,2,3-Trichloropropane
 Concen: 24.031 ug/l
 RT: 11.067 min Scan# 1637
 Delta R.T. -0.153 min
 Lab File: VX047759.D
 Acq: 24 Sep 2025 08:01



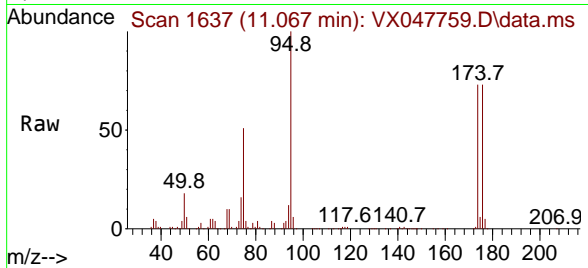
Tgt Ion: 75 Resp: 70000
 Ion Ratio Lower Upper
 75 100
 77 1.4 18.8 56.4#





#81
 trans-1,4-Dichloro-2-butene
 Concen: 61.283 ug/l
 RT: 11.067 min Scan# 10
 Delta R.T. 0.067 min
 Lab File: VX047759.D
 Acq: 24 Sep 2025 08:01

Instrument :
 MSVOA_X
 ClientSampleId :
 RE135D2-20250915



Tgt Ion: 75 Resp: 70000
 Ion Ratio Lower Upper
 75 100
 53 0.0 83.4 125.2#
 89 0.0 36.3 54.5#

