

Data Path : Z:\voasrv\HPCHEM1\MSVOA\_X\Data\VX092325\  
 Data File : VX047762.D  
 Acq On : 24 Sep 2025 09:04  
 Operator : JC/MD  
 Sample : Q3127-04  
 Misc : 5.0mL/MSVOA\_X/WATER  
 ALS Vial : 51 Sample Multiplier: 1

Instrument :  
 MSVOA\_X  
 ClientSampleId :  
 DUP07-20250915

Quant Time: Sep 25 01:19:39 2025  
 Quant Method : Z:\voasrv\HPCHEM1\MSVOA\_X\Method\82X091625W.M  
 Quant Title : SW846 8260  
 QLast Update : Wed Sep 17 06:39:58 2025  
 Response via : Initial Calibration

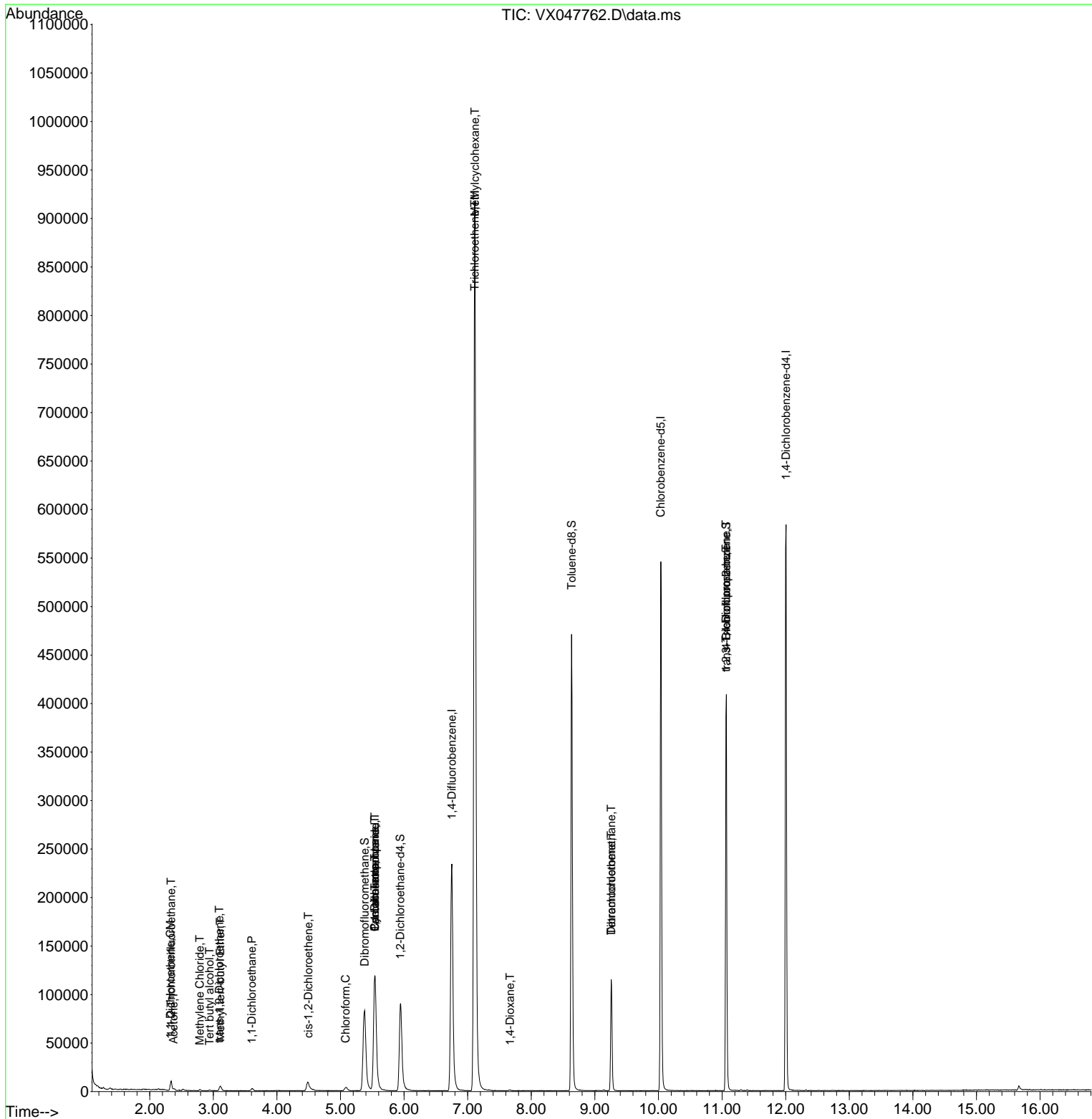
Compound	R.T.	QIon	Response	Conc	Units	Dev(Min)
-----						
Internal Standards						
1) Pentafluorobenzene	5.544	168	121816	50.000	ug/l	0.00
34) 1,4-Difluorobenzene	6.751	114	256774	50.000	ug/l	0.00
63) Chlorobenzene-d5	10.037	117	253945	50.000	ug/l	0.00
72) 1,4-Dichlorobenzene-d4	12.006	152	124709	50.000	ug/l	0.00
System Monitoring Compounds						
33) 1,2-Dichloroethane-d4	5.940	65	98601	50.851	ug/l	0.00
Spiked Amount	50.000	Range	78 - 117	Recovery	=	101.700%
35) Dibromofluoromethane	5.379	113	82247	47.761	ug/l	0.00
Spiked Amount	50.000	Range	75 - 124	Recovery	=	95.520%
50) Toluene-d8	8.634	98	287969	48.328	ug/l	0.00
Spiked Amount	50.000	Range	92 - 112	Recovery	=	96.660%
62) 4-Bromofluorobenzene	11.067	95	118756	52.514	ug/l	0.00
Spiked Amount	50.000	Range	83 - 123	Recovery	=	105.020%
Target Compounds						
						Qvalue
9) 1,1,2-Trichlorotrifluo...	2.337	101	3706	2.630	ug/l	94
11) Tert butyl alcohol	2.940	59	104	0.482	ug/l #	72
12) 1,1-Dichloroethene	2.325	96	965	0.667	ug/l	97
16) Acetone	2.373	43	1465	1.738	ug/l #	88
19) Methyl tert-butyl Ether	3.111	73	5260	0.996	ug/l	96
20) Methylene Chloride	2.788	84	504	0.282	ug/l #	83
21) trans-1,2-Dichloroethene	3.093	96	341	0.219	ug/l	89
24) 1,1-Dichloroethane	3.605	63	3227	1.049	ug/l #	95
27) cis-1,2-Dichloroethene	4.495	96	6922	3.627	ug/l	81
30) Chloroform	5.080	83	4836	1.556	ug/l #	73
31) Cyclohexane	5.537	56	2793	1.090	ug/l #	15
36) 1,1-Dichloropropene	5.537	75	10123	4.023	ug/l #	49
38) Carbon Tetrachloride	5.544	117	13090	4.788	ug/l #	20
39) Methylcyclohexane	7.116	83	2844	0.996	ug/l #	1
44) Trichloroethene	7.110	130	377625	204.371	ug/l	95
49) 1,4-Dioxane	7.665	88	723	32.503	ug/l #	51
60) Dibromochloromethane	9.256	129	22731	10.865	ug/l #	11
64) Tetrachloroethene	9.256	164	22817	13.783	ug/l	98
76) 1,2,3-Trichloropropane	11.061	75	62315	24.680	ug/l #	40
81) trans-1,4-Dichloro-2-b...	11.061	75	62315	62.936	ug/l #	8
-----						

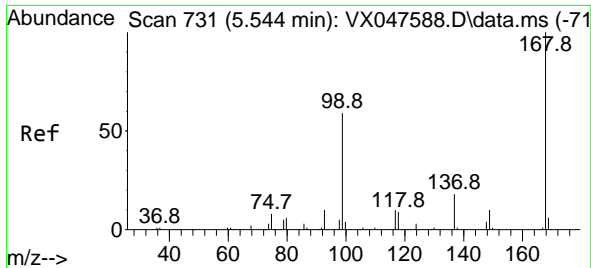
(#) = qualifier out of range (m) = manual integration (+) = signals summed

Data Path : Z:\voasrv\HPCHEM1\MSVOA\_X\Data\VX092325\  
 Data File : VX047762.D  
 Acq On : 24 Sep 2025 09:04  
 Operator : JC/MD  
 Sample : Q3127-04  
 Misc : 5.0mL/MSVOA\_X/WATER  
 ALS Vial : 51 Sample Multiplier: 1

Instrument :  
 MSVOA\_X  
 ClientSampleId :  
 DUP07-20250915

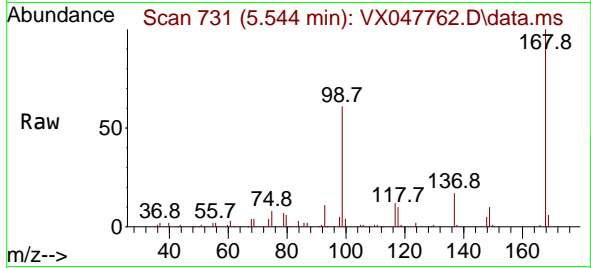
Quant Time: Sep 25 01:19:39 2025  
 Quant Method : Z:\voasrv\HPCHEM1\MSVOA\_X\Method\82X091625W.M  
 Quant Title : SW846 8260  
 QLast Update : Wed Sep 17 06:39:58 2025  
 Response via : Initial Calibration



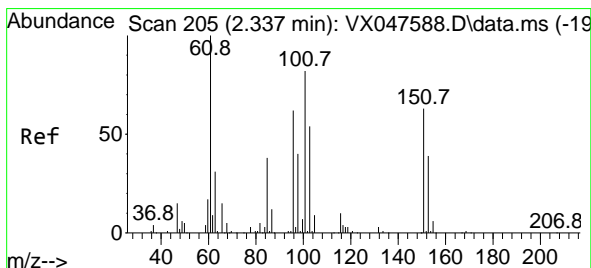
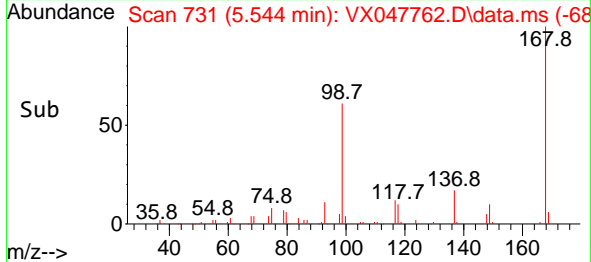
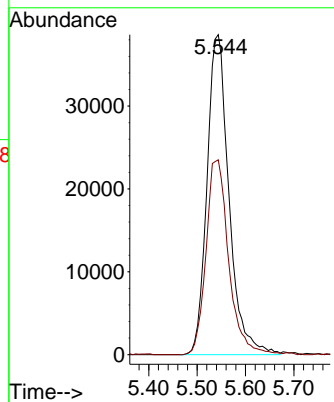


#1  
 Pentafluorobenzene  
 Concen: 50.000 ug/l  
 RT: 5.544 min Scan# 71  
 Delta R.T. -0.000 min  
 Lab File: VX047762.D  
 Acq: 24 Sep 2025 09:04

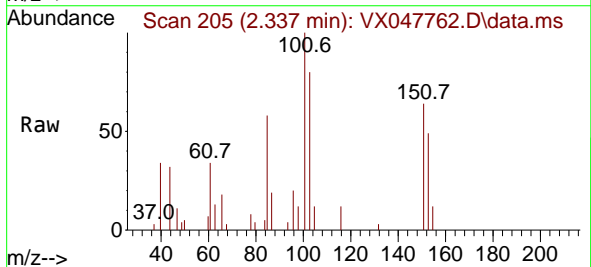
Instrument : MSVOA\_X  
 ClientSampleId : DUP07-20250915



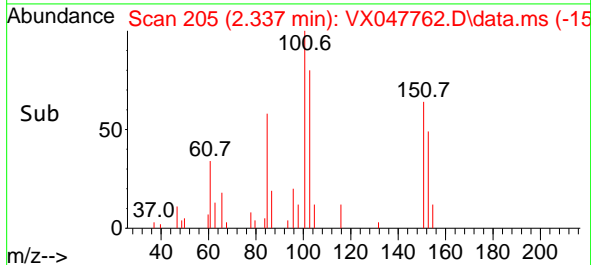
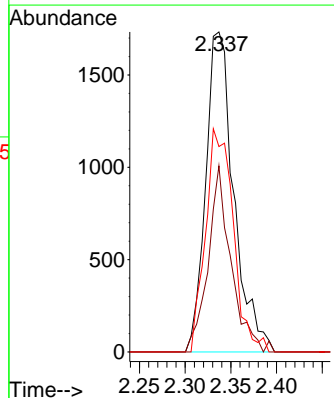
Tgt Ion:168 Resp: 121816  
 Ion Ratio Lower Upper  
 168 100  
 99 60.9 48.8 73.2

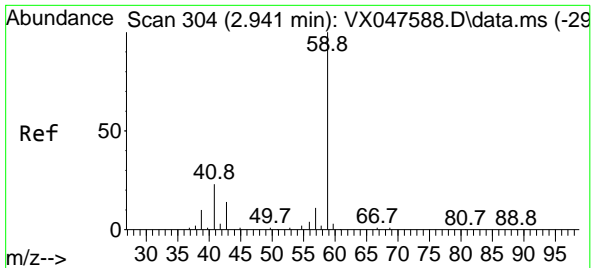


#9  
 1,1,2-Trichlorotrifluoroethane  
 Concen: 2.630 ug/l  
 RT: 2.337 min Scan# 205  
 Delta R.T. -0.000 min  
 Lab File: VX047762.D  
 Acq: 24 Sep 2025 09:04



Tgt Ion:101 Resp: 3706  
 Ion Ratio Lower Upper  
 101 100  
 85 47.4 35.5 53.3  
 151 68.9 59.4 89.0

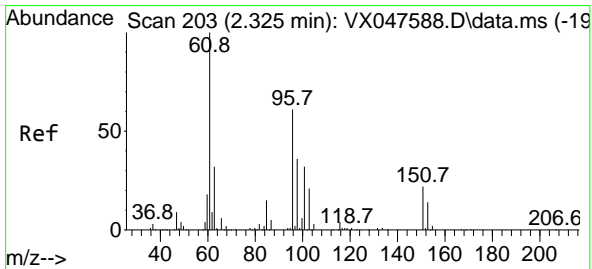
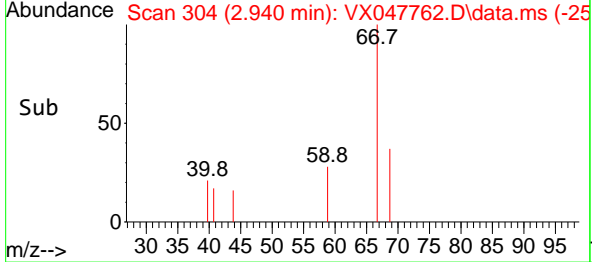
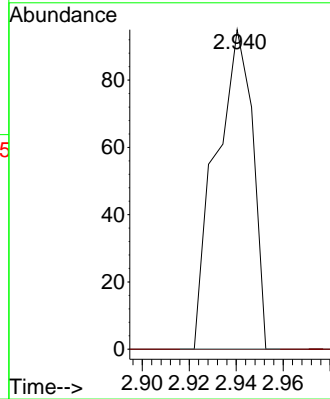
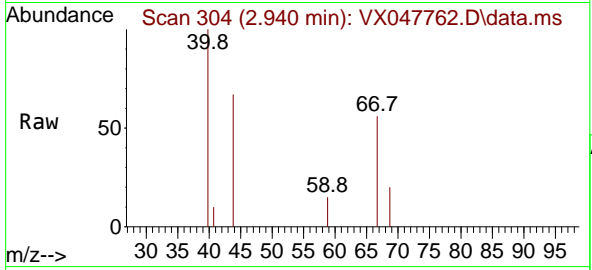




#11  
 Tert butyl alcohol  
 Concen: 0.482 ug/l  
 RT: 2.940 min Scan# 304  
 Delta R.T. -0.000 min  
 Lab File: VX047762.D  
 Acq: 24 Sep 2025 09:04

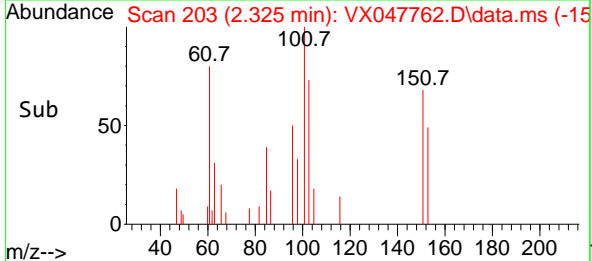
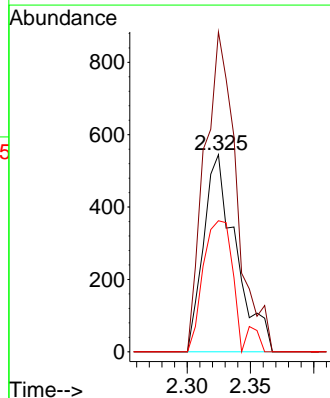
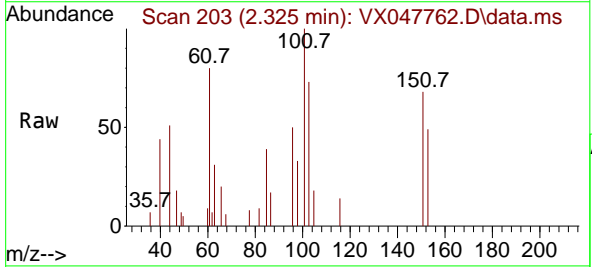
Instrument : MSVOA\_X  
 ClientSampleId : DUP07-20250915

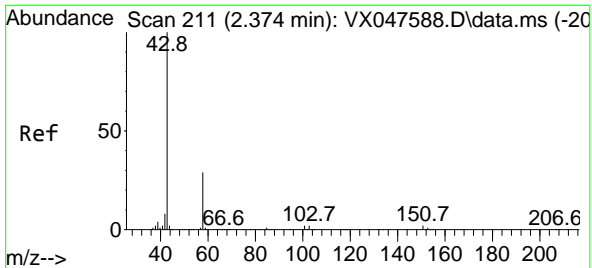
Tgt Ion: 59 Resp: 104  
 Ion Ratio Lower Upper  
 59 100  
 57 0.0 8.3 12.5#



#12  
 1,1-Dichloroethene  
 Concen: 0.667 ug/l  
 RT: 2.325 min Scan# 203  
 Delta R.T. -0.000 min  
 Lab File: VX047762.D  
 Acq: 24 Sep 2025 09:04

Tgt Ion: 96 Resp: 965  
 Ion Ratio Lower Upper  
 96 100  
 61 162.2 131.0 196.6  
 98 66.4 47.7 71.5

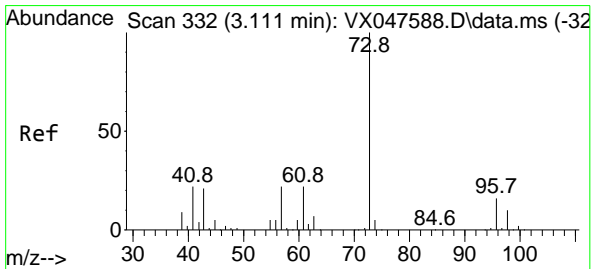
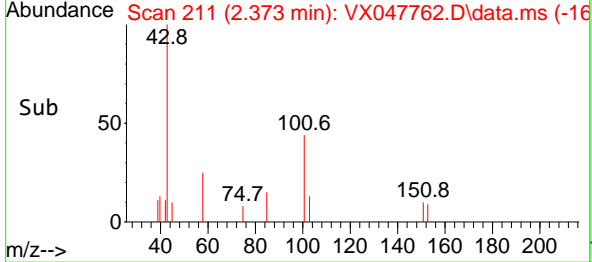
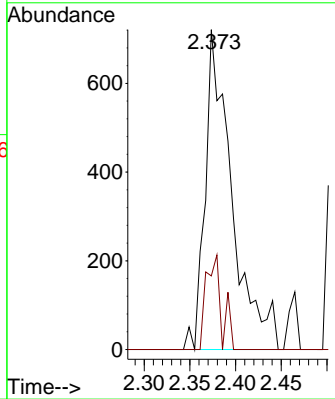
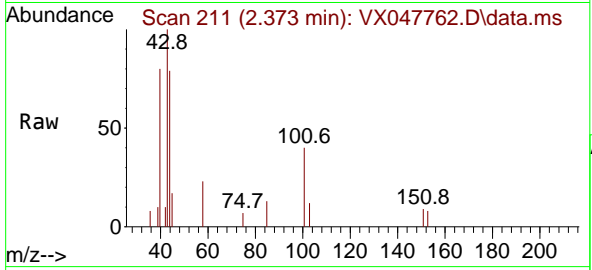




#16  
 Acetone  
 Concen: 1.738 ug/l  
 RT: 2.373 min Scan# 211  
 Delta R.T. -0.000 min  
 Lab File: VX047762.D  
 Acq: 24 Sep 2025 09:04

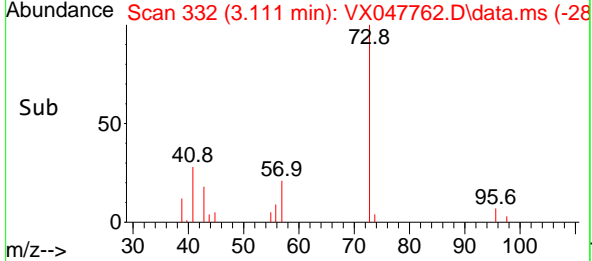
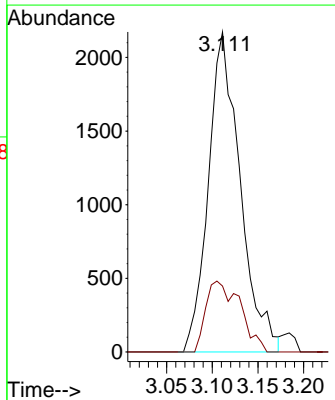
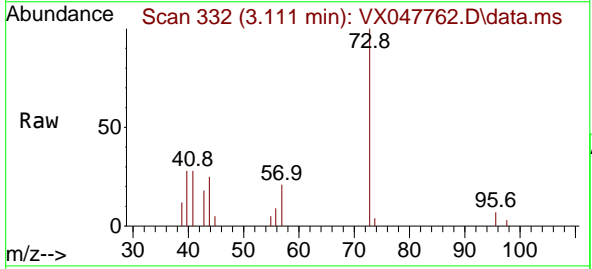
Instrument : MSVOA\_X  
 ClientSampleId : DUP07-20250915

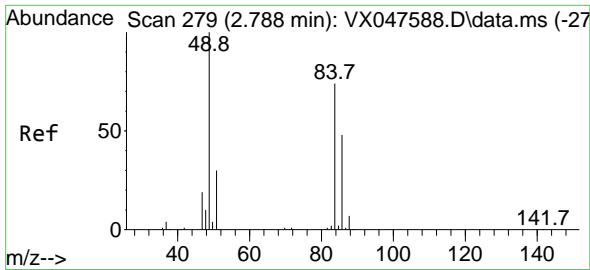
Tgt Ion: 43 Resp: 1465  
 Ion Ratio Lower Upper  
 43 100  
 58 23.0 23.4 35.0#



#19  
 Methyl tert-butyl Ether  
 Concen: 0.996 ug/l  
 RT: 3.111 min Scan# 332  
 Delta R.T. -0.000 min  
 Lab File: VX047762.D  
 Acq: 24 Sep 2025 09:04

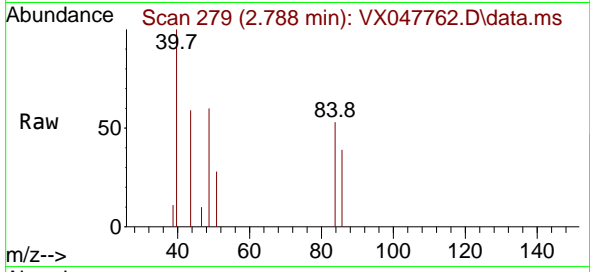
Tgt Ion: 73 Resp: 5260  
 Ion Ratio Lower Upper  
 73 100  
 57 19.8 17.4 26.2



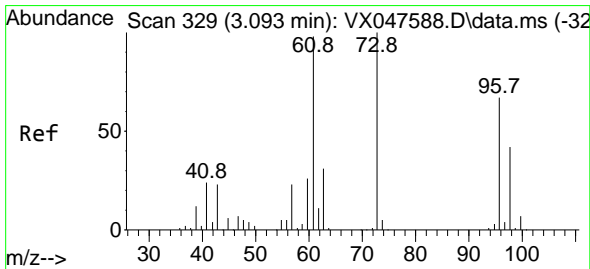
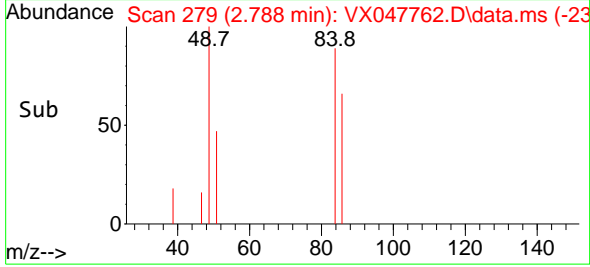
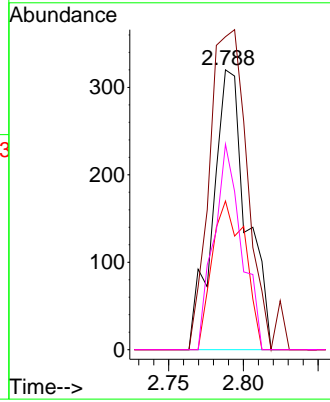


#20  
 Methylene Chloride  
 Concen: 0.282 ug/l  
 RT: 2.788 min Scan# 21  
 Delta R.T. -0.000 min  
 Lab File: VX047762.D  
 Acq: 24 Sep 2025 09:04

Instrument :  
 MSVOA\_X  
 ClientSampleId :  
 DUP07-20250915

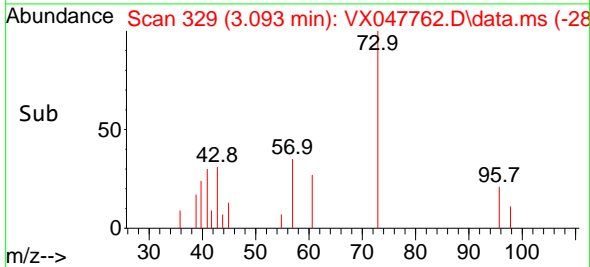
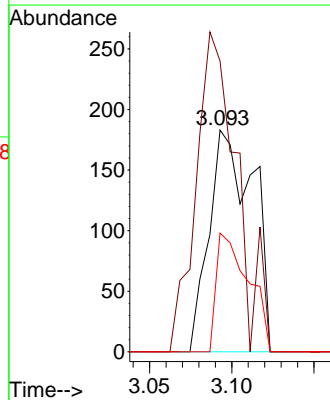
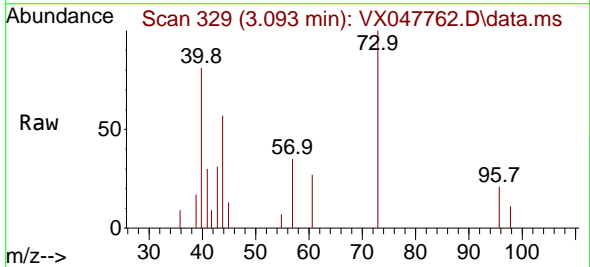


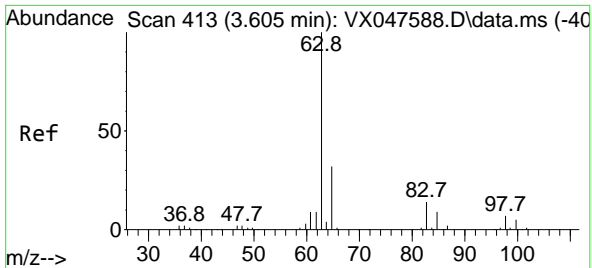
Tgt Ion: 84 Resp: 504  
 Ion Ratio Lower Upper  
 84 100  
 49 111.9 108.6 162.8  
 51 53.1 32.6 48.8#  
 86 73.4 52.0 78.0



#21  
 trans-1,2-Dichloroethene  
 Concen: 0.219 ug/l  
 RT: 3.093 min Scan# 329  
 Delta R.T. -0.000 min  
 Lab File: VX047762.D  
 Acq: 24 Sep 2025 09:04

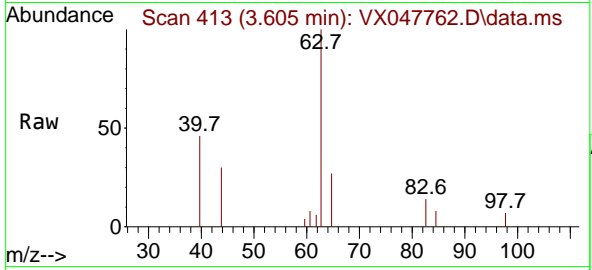
Tgt Ion: 96 Resp: 341  
 Ion Ratio Lower Upper  
 96 100  
 61 131.1 116.2 174.2  
 98 53.6 49.3 73.9



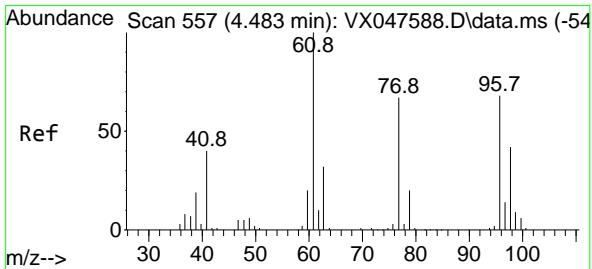
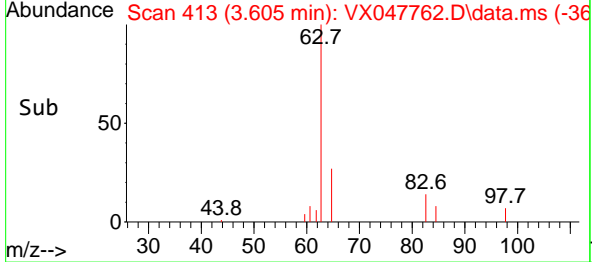
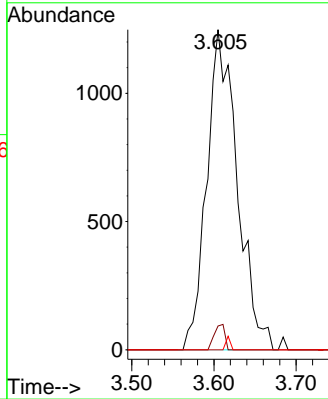


#24  
 1,1-Dichloroethane  
 Concen: 1.049 ug/l  
 RT: 3.605 min Scan# 413  
 Delta R.T. -0.000 min  
 Lab File: VX047762.D  
 Acq: 24 Sep 2025 09:04

Instrument : MSVOA\_X  
 ClientSampleId : DUP07-20250915

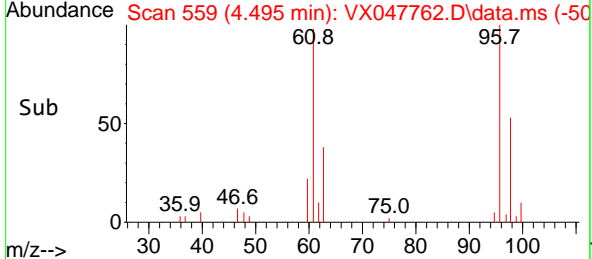
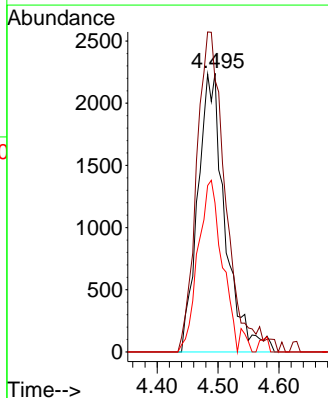
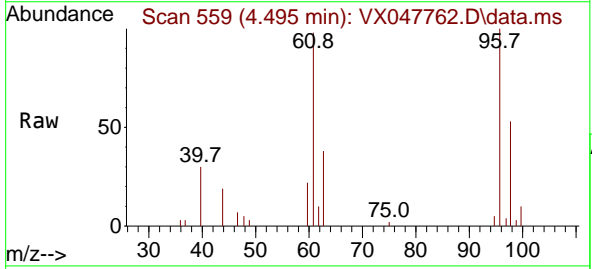


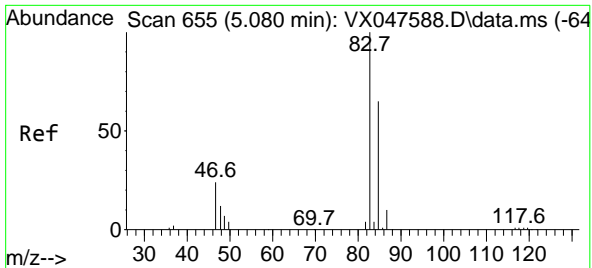
Tgt Ion	Resp	Ion Ratio	Lower	Upper
63	3227	100		
98		7.5	3.8	11.2
100		0.0	2.3	6.9



#27  
 cis-1,2-Dichloroethene  
 Concen: 3.627 ug/l  
 RT: 4.495 min Scan# 559  
 Delta R.T. 0.012 min  
 Lab File: VX047762.D  
 Acq: 24 Sep 2025 09:04

Tgt Ion	Resp	Ion Ratio	Lower	Upper
96	6922	100		
61		122.9	0.0	303.2
98		54.6	0.0	127.8

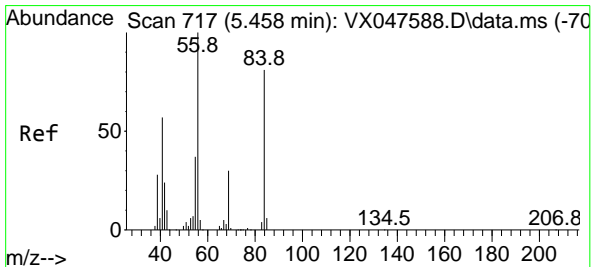
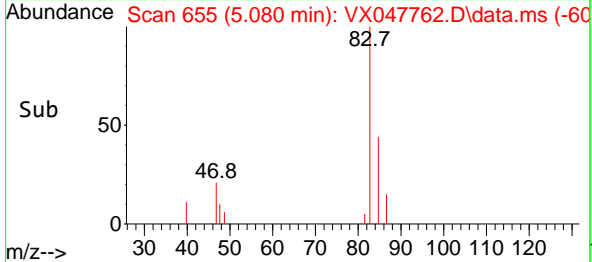
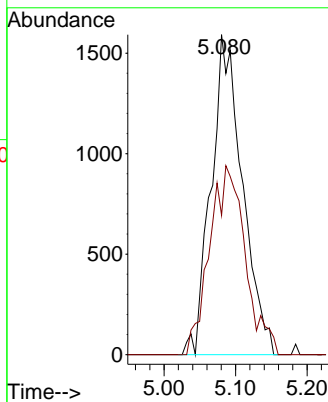
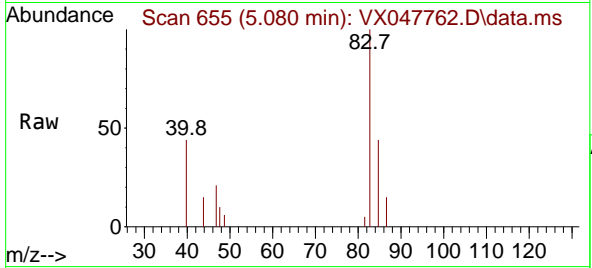




#30  
 Chloroform  
 Concen: 1.556 ug/l  
 RT: 5.080 min Scan# 61  
 Delta R.T. -0.000 min  
 Lab File: VX047762.D  
 Acq: 24 Sep 2025 09:04

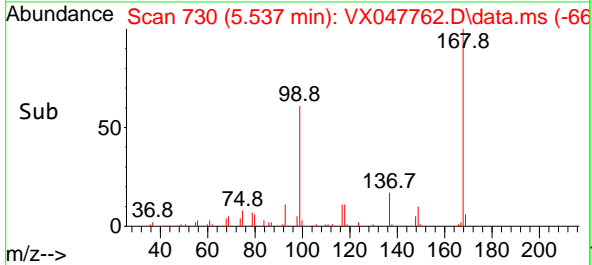
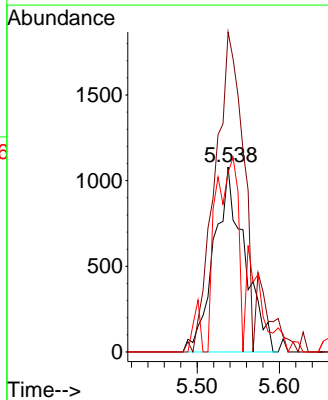
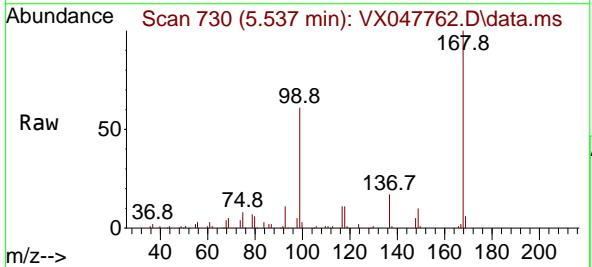
Instrument : MSVOA\_X  
 ClientSampleId : DUP07-20250915

Tgt Ion: 83 Resp: 4836  
 Ion Ratio Lower Upper  
 83 100  
 85 43.5 51.8 77.6#

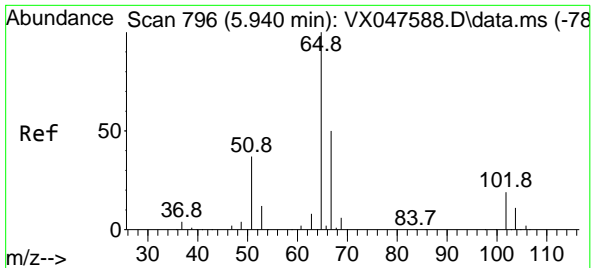


#31  
 Cyclohexane  
 Concen: 1.090 ug/l  
 RT: 5.537 min Scan# 730  
 Delta R.T. 0.079 min  
 Lab File: VX047762.D  
 Acq: 24 Sep 2025 09:04

Tgt Ion: 56 Resp: 2793  
 Ion Ratio Lower Upper  
 56 100  
 69 173.0 23.8 35.8#  
 84 97.1 64.6 97.0#



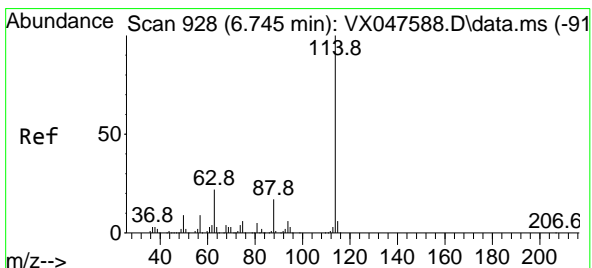
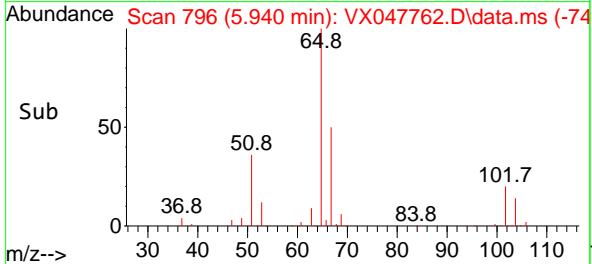
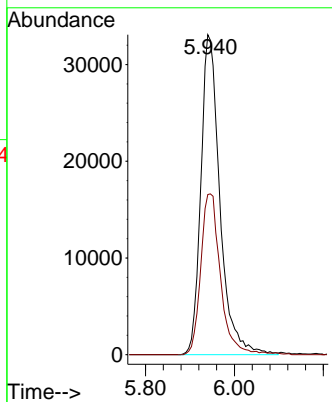
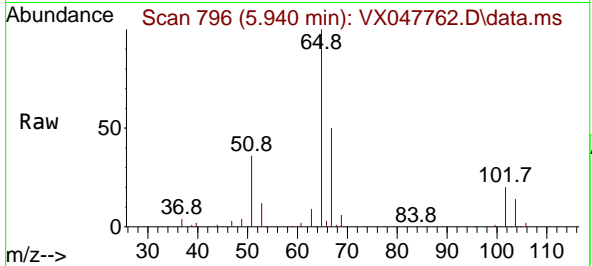




#33  
 1,2-Dichloroethane-d4  
 Concen: 50.851 ug/l  
 RT: 5.940 min Scan# 796  
 Delta R.T. -0.000 min  
 Lab File: VX047762.D  
 Acq: 24 Sep 2025 09:04

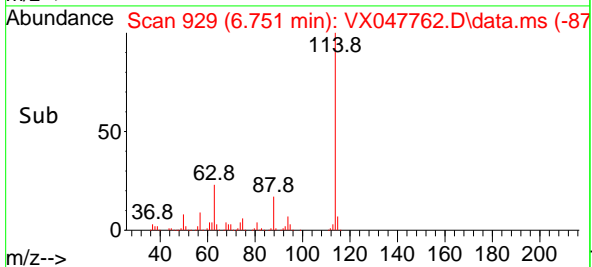
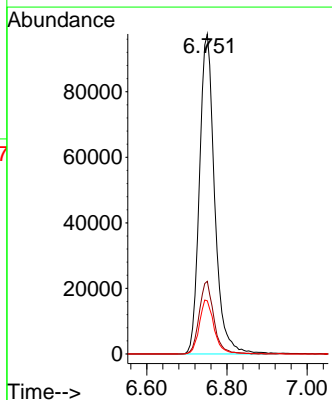
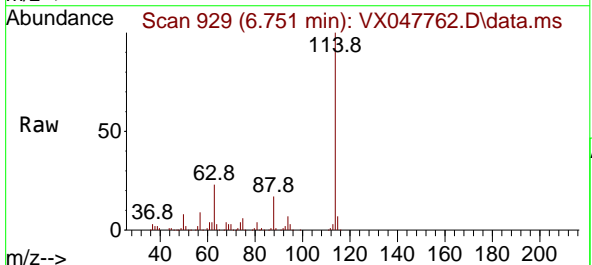
Instrument : MSVOA\_X  
 ClientSampleId : DUP07-20250915

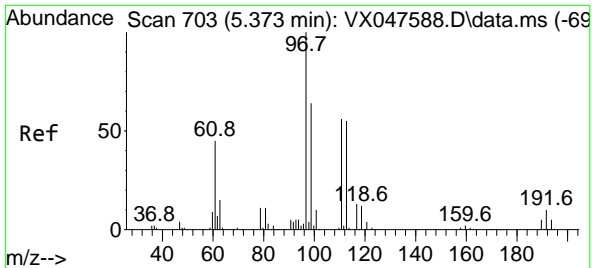
Tgt Ion: 65 Resp: 98601  
 Ion Ratio Lower Upper  
 65 100  
 67 52.3 0.0 103.0



#34  
 1,4-Difluorobenzene  
 Concen: 50.000 ug/l  
 RT: 6.751 min Scan# 929  
 Delta R.T. 0.006 min  
 Lab File: VX047762.D  
 Acq: 24 Sep 2025 09:04

Tgt Ion: 114 Resp: 256774  
 Ion Ratio Lower Upper  
 114 100  
 63 22.7 0.0 44.0  
 88 16.6 0.0 34.2

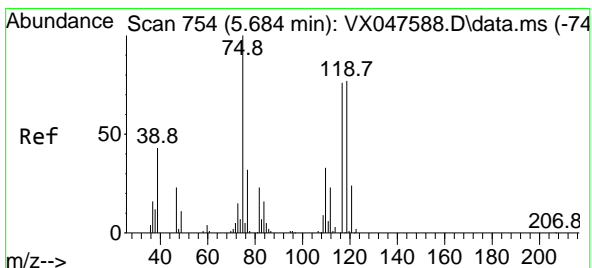
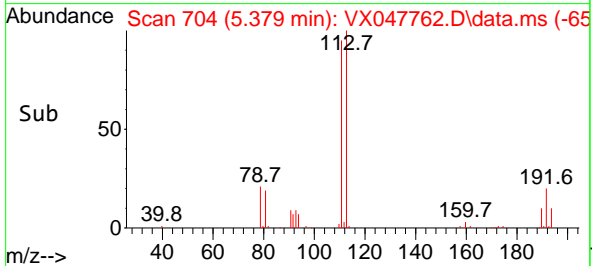
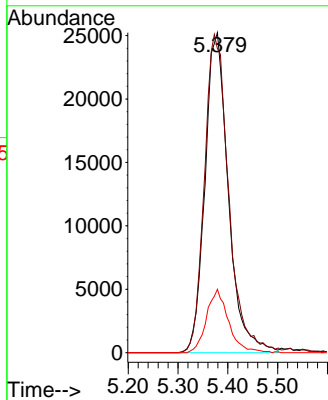
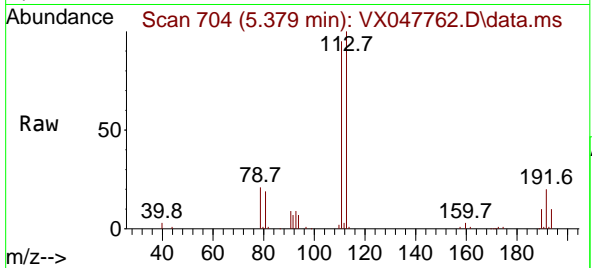




#35  
 Dibromofluoromethane  
 Concen: 47.761 ug/l  
 RT: 5.379 min Scan# 704  
 Delta R.T. 0.006 min  
 Lab File: VX047762.D  
 Acq: 24 Sep 2025 09:04

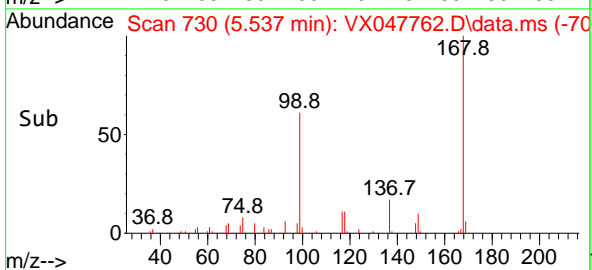
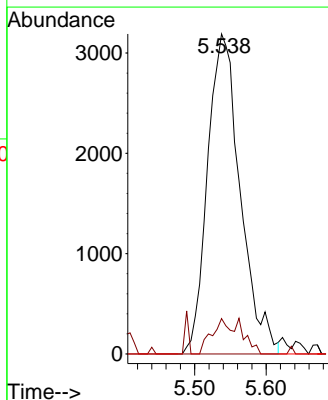
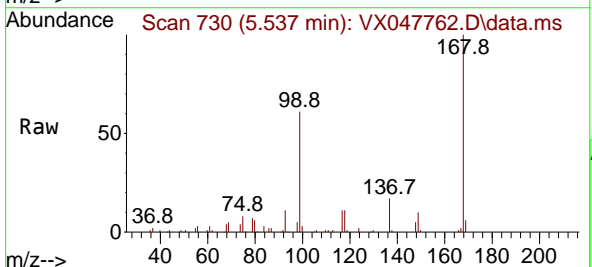
Instrument : MSVOA\_X  
 ClientSampleId : DUP07-20250915

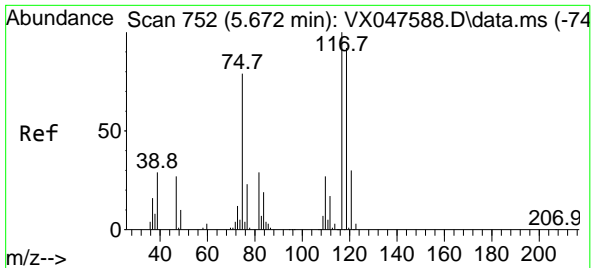
Tgt Ion	Resp	Lower	Upper
113	82247		
113	100		
111	103.2	80.9	121.3
192	18.6	14.2	21.4



#36  
 1,1-Dichloropropene  
 Concen: 4.023 ug/l  
 RT: 5.537 min Scan# 730  
 Delta R.T. -0.147 min  
 Lab File: VX047762.D  
 Acq: 24 Sep 2025 09:04

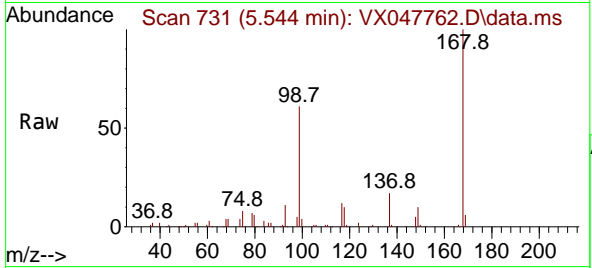
Tgt Ion	Resp	Lower	Upper
75	10123		
75	100		
110	6.7	16.7	50.1#
77	0.0	24.3	36.5#





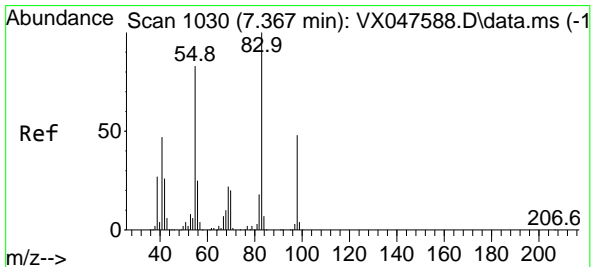
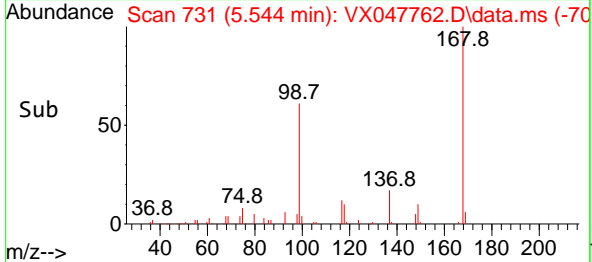
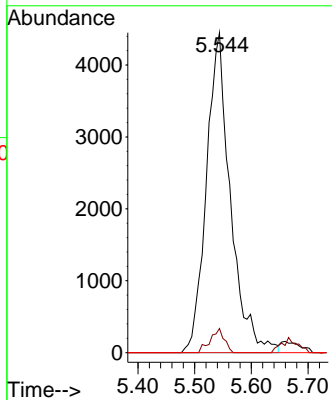
#38  
 Carbon Tetrachloride  
 Concen: 4.788 ug/l  
 RT: 5.544 min Scan# 711  
 Delta R.T. -0.128 min  
 Lab File: VX047762.D  
 Acq: 24 Sep 2025 09:04

Instrument : MSVOA\_X  
 ClientSampleId : DUP07-20250915



Tgt Ion: 117 Resp: 13090

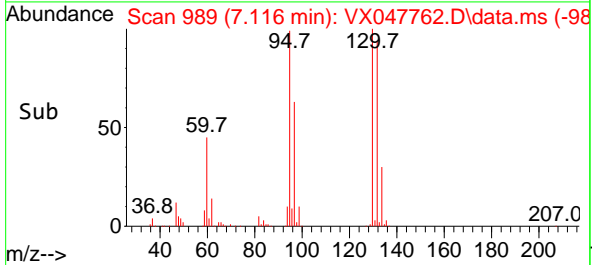
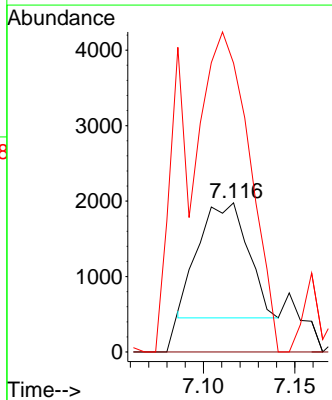
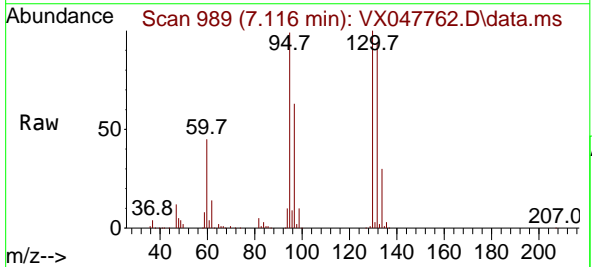
Ion	Ratio	Lower	Upper
117	100		
119	7.6	73.4	110.2#
121	0.0	23.8	35.6#

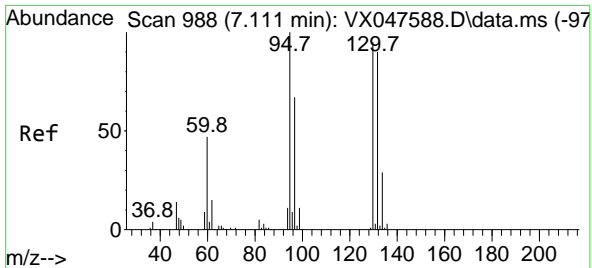


#39  
 Methylcyclohexane  
 Concen: 0.996 ug/l  
 RT: 7.116 min Scan# 989  
 Delta R.T. -0.250 min  
 Lab File: VX047762.D  
 Acq: 24 Sep 2025 09:04

Tgt Ion: 83 Resp: 2844

Ion	Ratio	Lower	Upper
83	100		
55	0.0	66.4	99.6#
98	297.4	38.1	57.1#

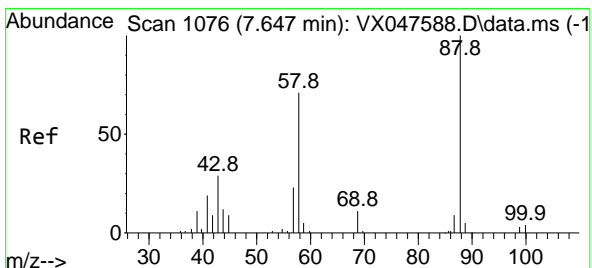
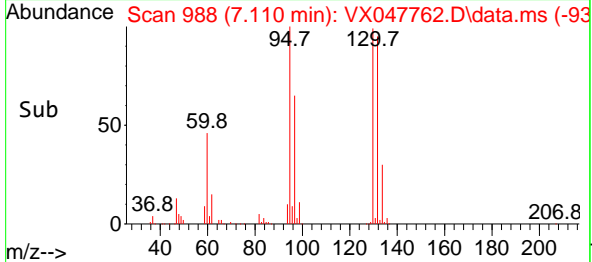
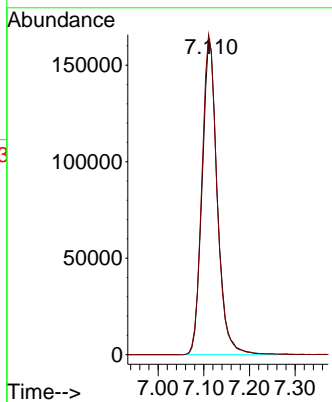
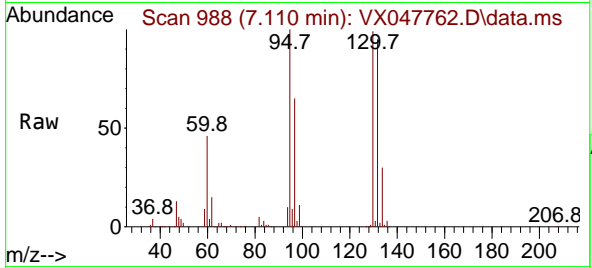




#44  
 Trichloroethene  
 Concen: 204.371 ug/l  
 RT: 7.110 min Scan# 91  
 Delta R.T. -0.000 min  
 Lab File: VX047762.D  
 Acq: 24 Sep 2025 09:04

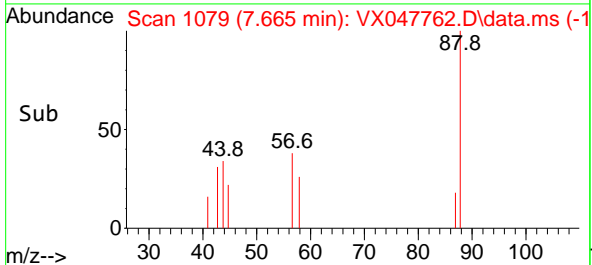
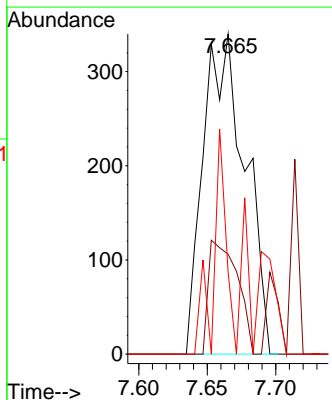
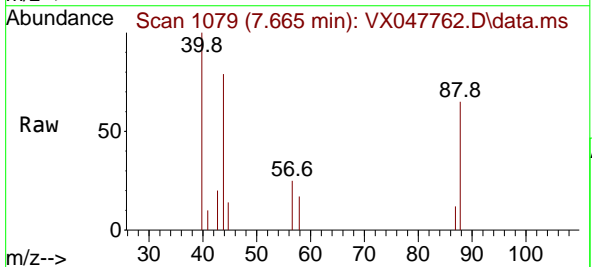
Instrument :  
 MSVOA\_X  
 ClientSampleId :  
 DUP07-20250915

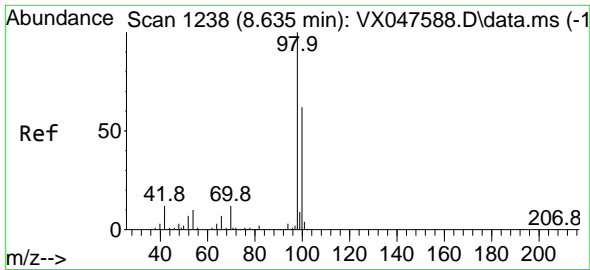
Tgt Ion:130 Resp: 377625  
 Ion Ratio Lower Upper  
 130 100  
 95 100.7 0.0 210.8



#49  
 1,4-Dioxane  
 Concen: 32.503 ug/l  
 RT: 7.665 min Scan# 1079  
 Delta R.T. 0.018 min  
 Lab File: VX047762.D  
 Acq: 24 Sep 2025 09:04

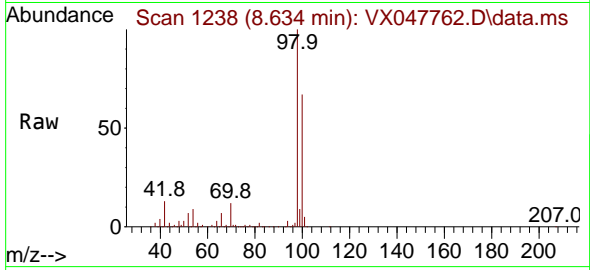
Tgt Ion: 88 Resp: 723  
 Ion Ratio Lower Upper  
 88 100  
 43 24.5 30.2 45.2#  
 58 21.6 59.5 89.3#



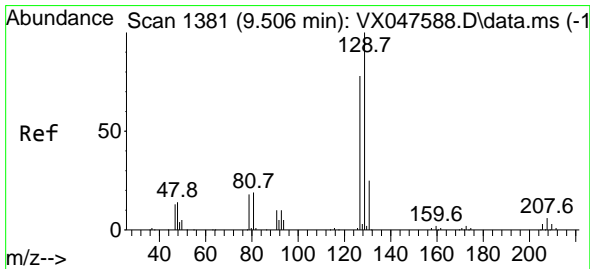
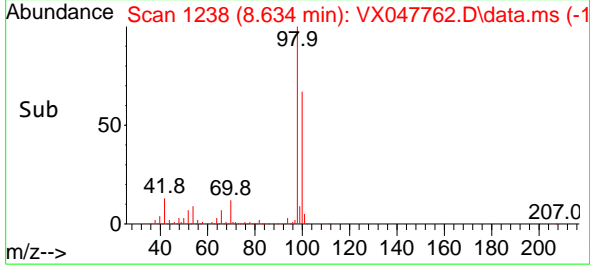
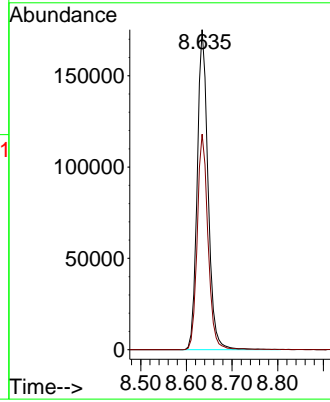


#50  
 Toluene-d8  
 Concen: 48.328 ug/l  
 RT: 8.634 min Scan# 11  
 Delta R.T. -0.000 min  
 Lab File: VX047762.D  
 Acq: 24 Sep 2025 09:04

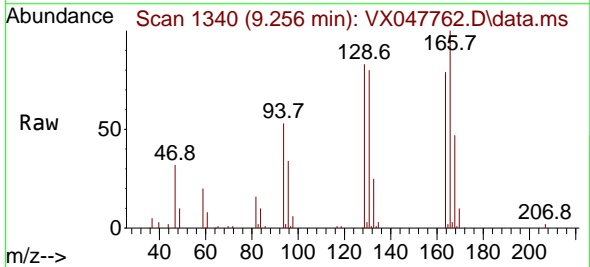
Instrument :  
 MSVOA\_X  
 ClientSampleId :  
 DUP07-20250915



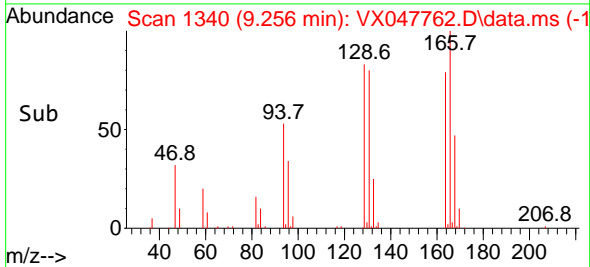
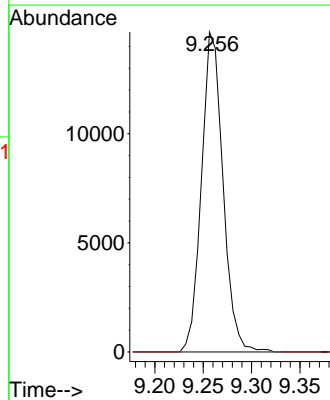
Tgt Ion: 98 Resp: 287969  
 Ion Ratio Lower Upper  
 98 100  
 100 67.0 53.0 79.4

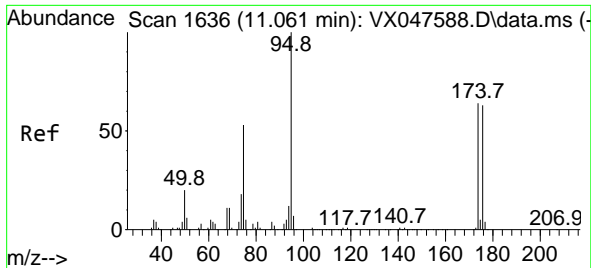


#60  
 Dibromochloromethane  
 Concen: 10.865 ug/l  
 RT: 9.256 min Scan# 1340  
 Delta R.T. -0.250 min  
 Lab File: VX047762.D  
 Acq: 24 Sep 2025 09:04



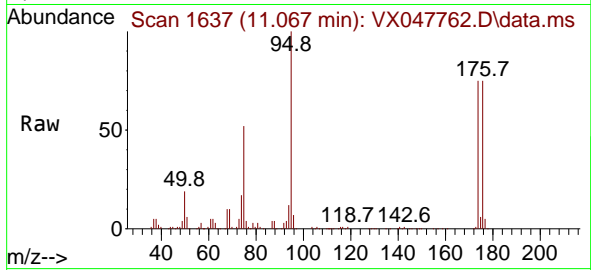
Tgt Ion: 129 Resp: 22731  
 Ion Ratio Lower Upper  
 129 100  
 127 0.0 38.4 115.2#



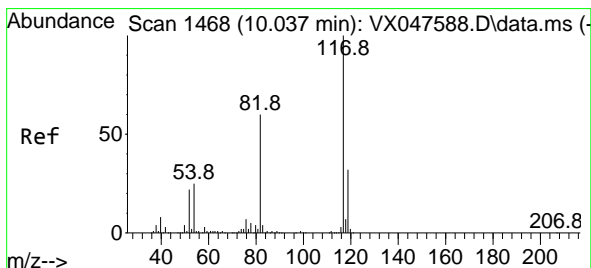
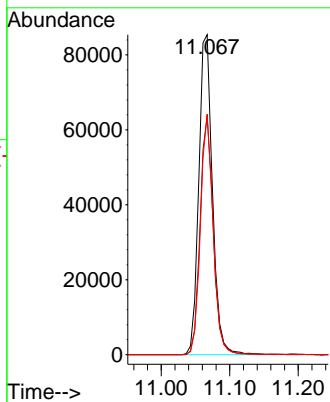
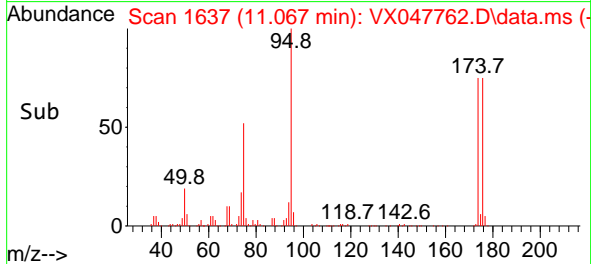


#62  
 4-Bromofluorobenzene  
 Concen: 52.514 ug/l  
 RT: 11.067 min Scan# 1  
 Delta R.T. 0.006 min  
 Lab File: VX047762.D  
 Acq: 24 Sep 2025 09:04

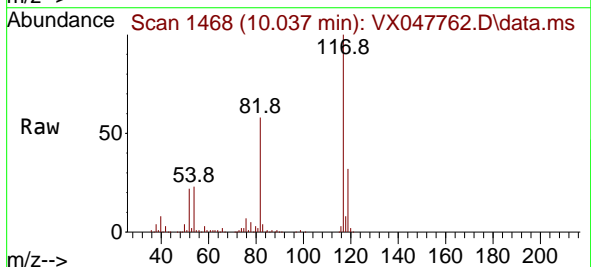
Instrument :  
 MSVOA\_X  
 ClientSampleId :  
 DUP07-20250915



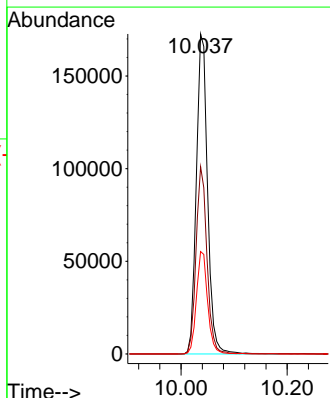
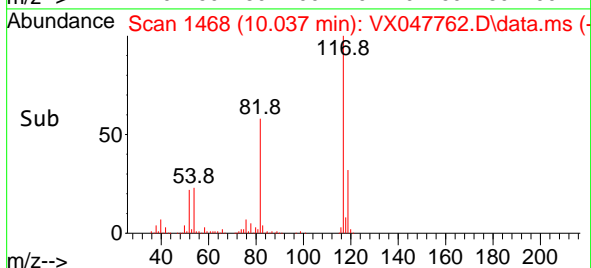
Tgt Ion: 95 Resp: 118756  
 Ion Ratio Lower Upper  
 95 100  
 174 71.6 0.0 141.6  
 176 69.9 0.0 138.4

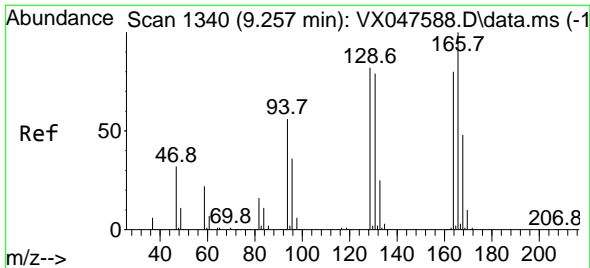


#63  
 Chlorobenzene-d5  
 Concen: 50.000 ug/l  
 RT: 10.037 min Scan# 1468  
 Delta R.T. -0.000 min  
 Lab File: VX047762.D  
 Acq: 24 Sep 2025 09:04



Tgt Ion: 117 Resp: 253945  
 Ion Ratio Lower Upper  
 117 100  
 82 58.5 47.8 71.6  
 119 32.0 25.2 37.8



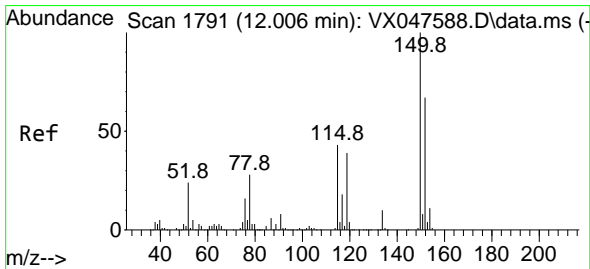
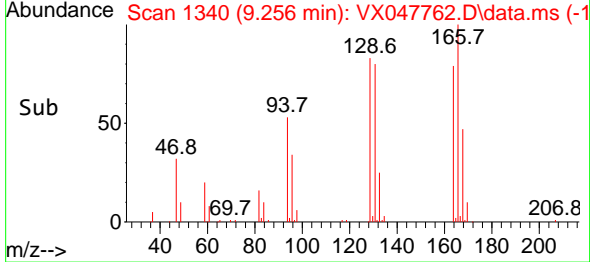
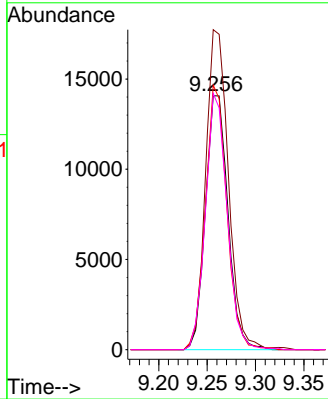
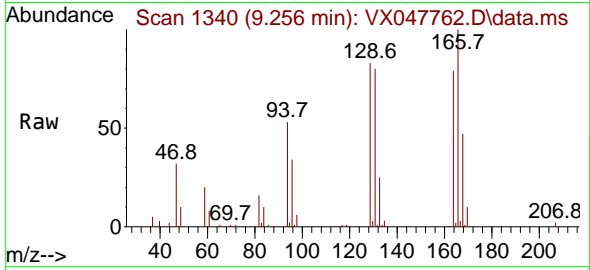


#64  
 Tetrachloroethene  
 Concen: 13.783 ug/l  
 RT: 9.256 min Scan# 111  
 Delta R.T. -0.000 min  
 Lab File: VX047762.D  
 Acq: 24 Sep 2025 09:04

Instrument : MSVOA\_X  
 ClientSampleId : DUP07-20250915

Tgt Ion:164 Resp: 22817

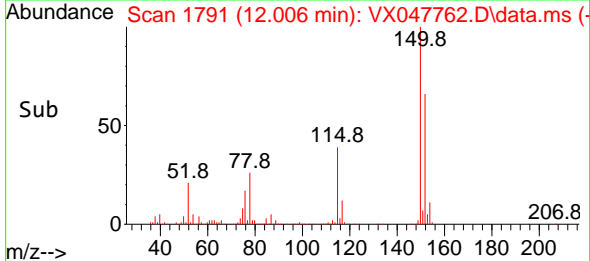
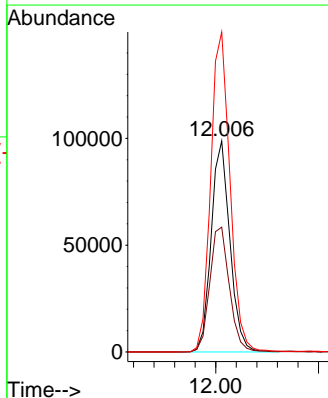
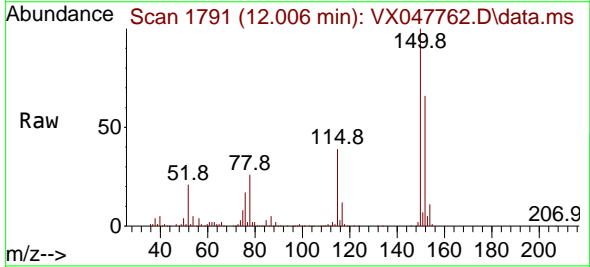
Ion	Ratio	Lower	Upper
164	100		
166	126.1	100.2	150.2
129	104.2	81.8	122.6
131	100.9	78.6	118.0

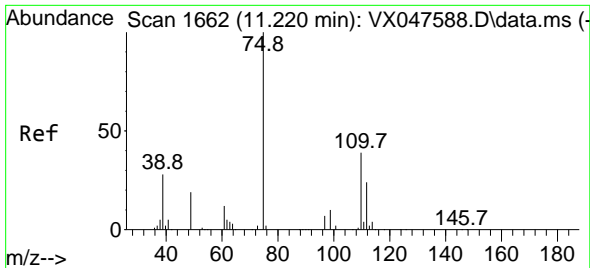


#72  
 1,4-Dichlorobenzene-d4  
 Concen: 50.000 ug/l  
 RT: 12.006 min Scan# 1791  
 Delta R.T. -0.000 min  
 Lab File: VX047762.D  
 Acq: 24 Sep 2025 09:04

Tgt Ion:152 Resp: 124709

Ion	Ratio	Lower	Upper
152	100		
115	62.1	44.9	134.5
150	156.2	0.0	352.0

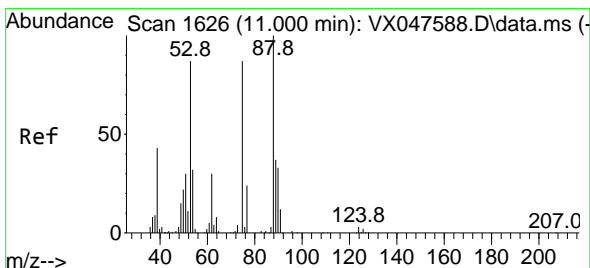
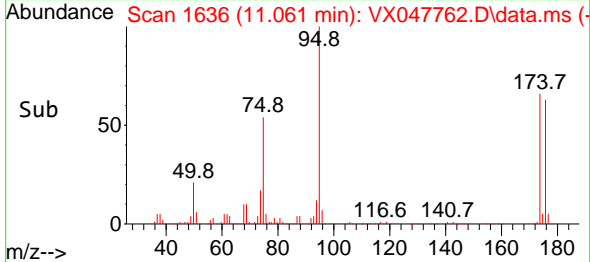
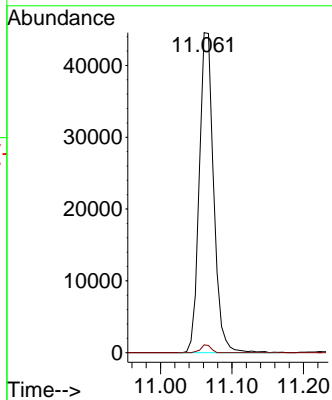
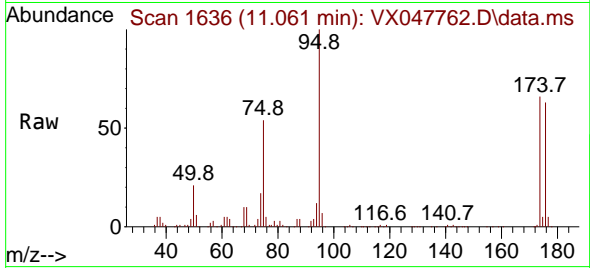




#76  
 1,2,3-Trichloropropane  
 Concen: 24.680 ug/l  
 RT: 11.061 min Scan# 1636  
 Delta R.T. -0.159 min  
 Lab File: VX047762.D  
 Acq: 24 Sep 2025 09:04

Instrument :  
 MSVOA\_X  
 ClientSampleId :  
 DUP07-20250915

Tgt Ion: 75 Resp: 62315  
 Ion Ratio Lower Upper  
 75 100  
 77 1.7 18.8 56.4#



#81  
 trans-1,4-Dichloro-2-butene  
 Concen: 62.936 ug/l  
 RT: 11.061 min Scan# 1636  
 Delta R.T. 0.061 min  
 Lab File: VX047762.D  
 Acq: 24 Sep 2025 09:04

Tgt Ion: 75 Resp: 62315  
 Ion Ratio Lower Upper  
 75 100  
 53 0.0 83.4 125.2#  
 89 0.0 36.3 54.5#

