

Data Path : Z:\voasrv\HPCHEM1\MSVOA_X\Data\VX092325\
 Data File : VX047763.D
 Acq On : 24 Sep 2025 09:25
 Operator : JC/MD
 Sample : Q3097-25
 Misc : 5.0mL/MSVOA_X/WATER
 ALS Vial : 52 Sample Multiplier: 1

Instrument :
 MSVOA_X
 ClientSampleId :
 RE134D3-20250912

Quant Time: Sep 25 01:20:13 2025
 Quant Method : Z:\voasrv\HPCHEM1\MSVOA_X\Method\82X091625W.M
 Quant Title : SW846 8260
 QLast Update : Wed Sep 17 06:39:58 2025
 Response via : Initial Calibration

Compound	R.T.	QIon	Response	Conc	Units	Dev(Min)

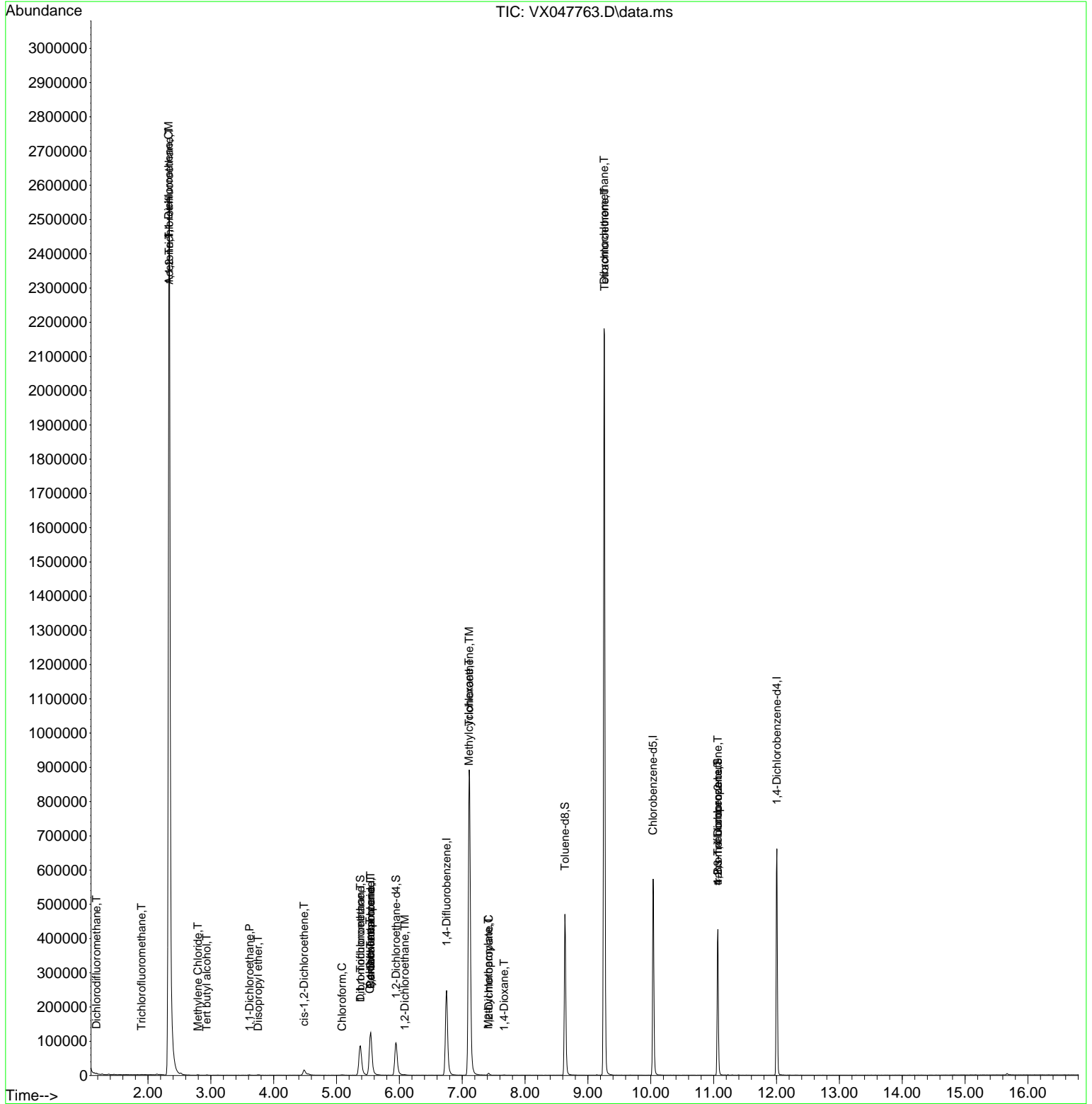
Internal Standards						
1) Pentafluorobenzene	5.544	168	124480	50.000	ug/l	0.00
34) 1,4-Difluorobenzene	6.751	114	269681	50.000	ug/l	0.00
63) Chlorobenzene-d5	10.037	117	267242	50.000	ug/l	0.00
72) 1,4-Dichlorobenzene-d4	12.006	152	134755	50.000	ug/l	0.00
System Monitoring Compounds						
33) 1,2-Dichloroethane-d4	5.946	65	102695	51.829	ug/l	0.00
Spiked Amount	50.000	Range 78 - 117	Recovery	=	103.660%	
35) Dibromofluoromethane	5.379	113	84691	46.826	ug/l	0.00
Spiked Amount	50.000	Range 75 - 124	Recovery	=	93.660%	
50) Toluene-d8	8.634	98	286083	45.713	ug/l	0.00
Spiked Amount	50.000	Range 92 - 112	Recovery	=	91.420%#	
62) 4-Bromofluorobenzene	11.067	95	121659	51.223	ug/l	0.00
Spiked Amount	50.000	Range 83 - 123	Recovery	=	102.440%	
Target Compounds						
						Qvalue
2) Dichlorodifluoromethane	1.178	85	655	0.508	ug/l #	68
7) Trichlorofluoromethane	1.898	101	539	0.219	ug/l #	72
9) 1,1,2-Trichlorotrifluo...	2.337	101	1200278	833.652	ug/l	99
11) Tert butyl alcohol	2.934	59	203	0.920	ug/l #	72
12) 1,1-Dichloroethene	2.331	96	9454	6.392	ug/l #	77
16) Acetone	2.337	43	15197	17.640	ug/l #	1
20) Methylene Chloride	2.794	84	603	0.331	ug/l #	78
22) Diisopropyl ether	3.751	45	1205	0.204	ug/l #	68
24) 1,1-Dichloroethane	3.617	63	1408	0.448	ug/l #	81
27) cis-1,2-Dichloroethene	4.483	96	10892	5.586	ug/l	88
30) Chloroform	5.086	83	1418	0.446	ug/l #	69
31) Cyclohexane	5.531	56	2891	1.104	ug/l #	10
32) 1,1,1-Trichloroethane	5.379	97	687	0.255	ug/l #	47
36) 1,1-Dichloropropene	5.544	75	10520	3.981	ug/l #	50
38) Carbon Tetrachloride	5.544	117	13593	4.734	ug/l #	19
39) Methylcyclohexane	7.104	83	4745	1.582	ug/l #	1
42) 1,2-Dichloroethane	6.086	62	1472	0.482	ug/l #	76
44) Trichloroethene	7.110	130	378121	194.845	ug/l	97
45) 1,2-Dichloropropane	7.421	63	2305	1.121	ug/l	90
48) Methyl methacrylate	7.415	41	1257	0.544	ug/l #	32
49) 1,4-Dioxane	7.665	88	510	21.830	ug/l #	79
60) Dibromochloromethane	9.256	129	427787	194.696	ug/l #	11
64) Tetrachloroethene	9.262	164	428438	245.927	ug/l	98
76) 1,2,3-Trichloropropane	11.067	75	63526	23.284	ug/l #	39
81) trans-1,4-Dichloro-2-b...	11.067	75	63526	59.376	ug/l #	8

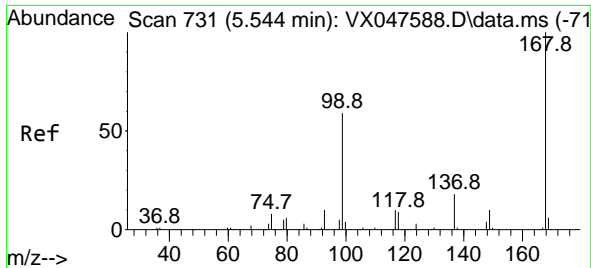
(#) = qualifier out of range (m) = manual integration (+) = signals summed

Data Path : Z:\voasrv\HPCHEM1\MSVOA_X\Data\VX092325\
 Data File : VX047763.D
 Acq On : 24 Sep 2025 09:25
 Operator : JC/MD
 Sample : Q3097-25
 Misc : 5.0mL/MSVOA_X/WATER
 ALS Vial : 52 Sample Multiplier: 1

Instrument :
 MSVOA_X
ClientSampleId :
 RE134D3-20250912

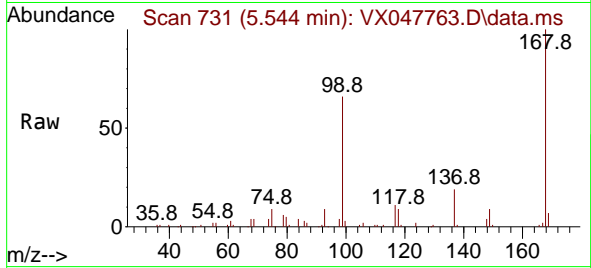
Quant Time: Sep 25 01:20:13 2025
 Quant Method : Z:\voasrv\HPCHEM1\MSVOA_X\Method\82X091625W.M
 Quant Title : SW846 8260
 QLast Update : Wed Sep 17 06:39:58 2025
 Response via : Initial Calibration



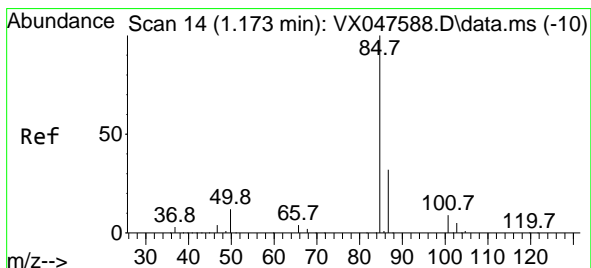
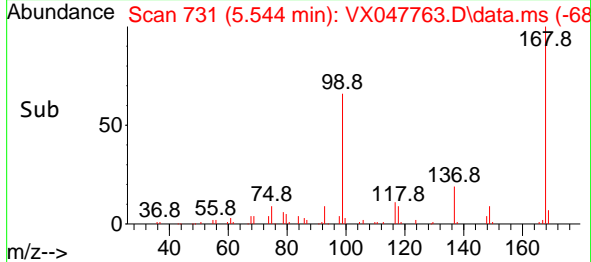
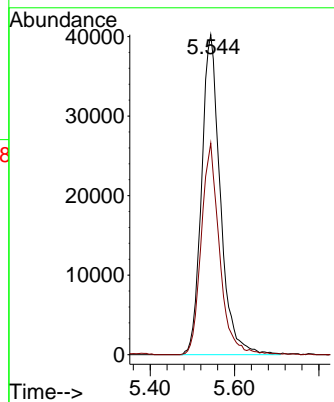


#1
 Pentafluorobenzene
 Concen: 50.000 ug/l
 RT: 5.544 min Scan# 71
 Delta R.T. -0.000 min
 Lab File: VX047763.D
 Acq: 24 Sep 2025 09:25

Instrument : MSVOA_X
 ClientSampleId : RE134D3-20250912

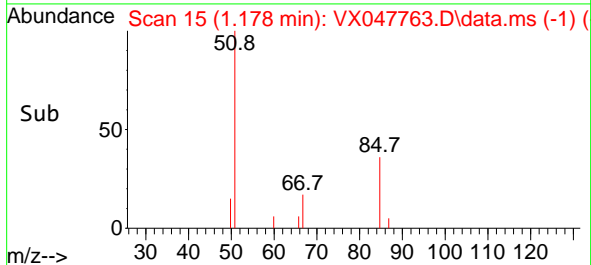
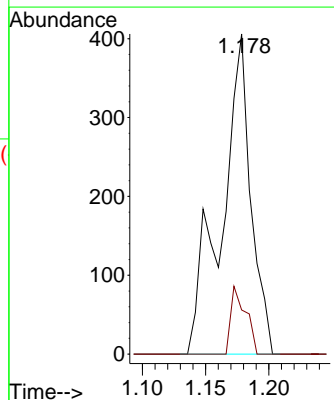
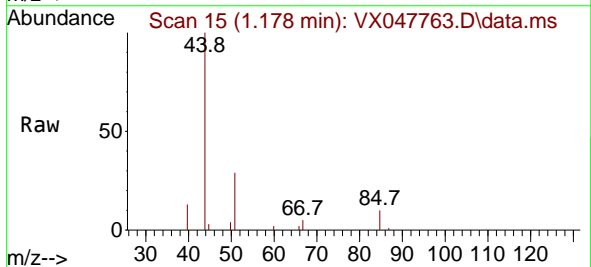


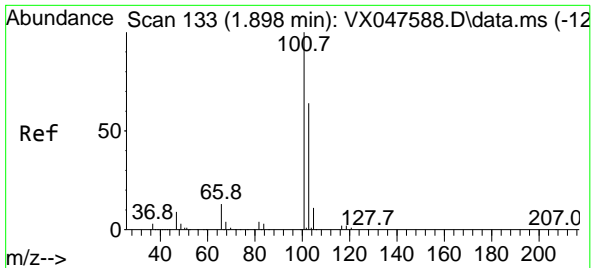
Tgt Ion:168 Resp: 124480
 Ion Ratio Lower Upper
 168 100
 99 66.1 48.8 73.2



#2
 Dichlorodifluoromethane
 Concen: 0.508 ug/l
 RT: 1.178 min Scan# 15
 Delta R.T. 0.006 min
 Lab File: VX047763.D
 Acq: 24 Sep 2025 09:25

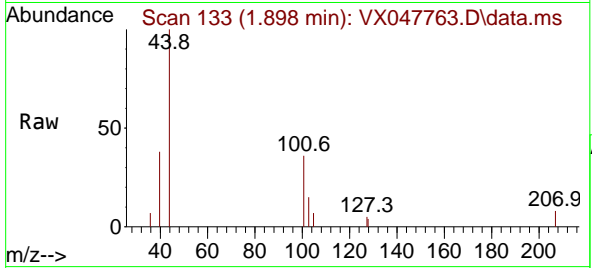
Tgt Ion: 85 Resp: 655
 Ion Ratio Lower Upper
 85 100
 87 13.8 15.8 47.3#



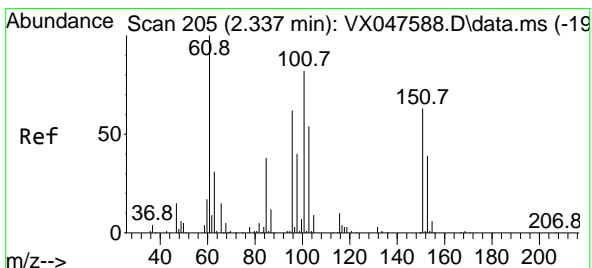
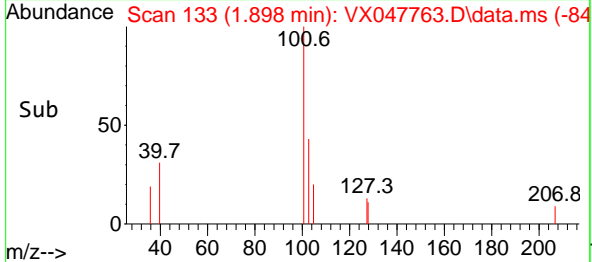
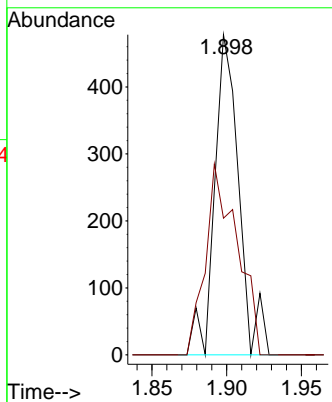


#7
 Trichlorofluoromethane
 Concen: 0.219 ug/l
 RT: 1.898 min Scan# 11
 Delta R.T. -0.000 min
 Lab File: VX047763.D
 Acq: 24 Sep 2025 09:25

Instrument : MSVOA_X
 ClientSampleId : RE134D3-20250912

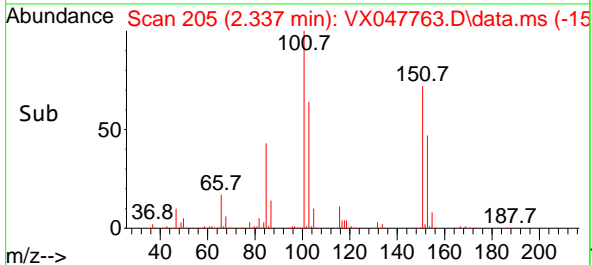
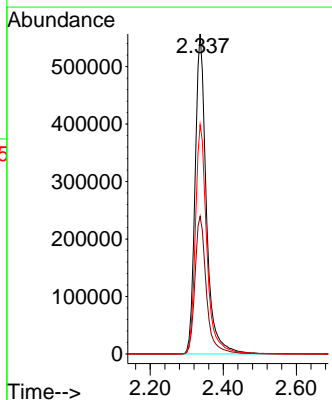
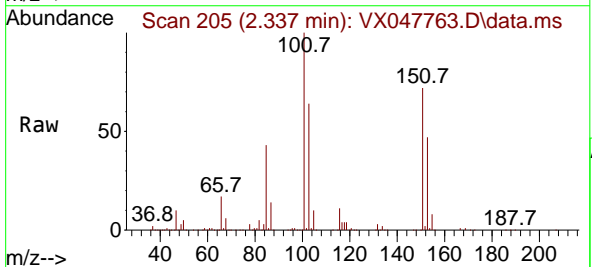


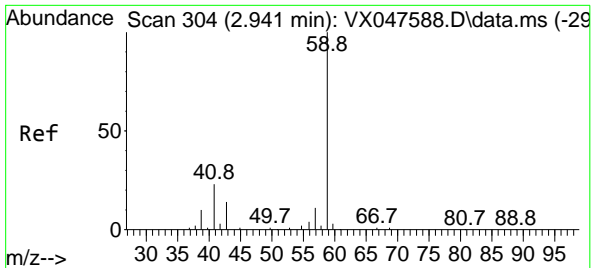
Tgt Ion:101 Resp: 539
 Ion Ratio Lower Upper
 101 100
 103 42.7 51.4 77.2#



#9
 1,1,2-Trichlorotrifluoroethane
 Concen: 833.652 ug/l
 RT: 2.337 min Scan# 205
 Delta R.T. -0.000 min
 Lab File: VX047763.D
 Acq: 24 Sep 2025 09:25

Tgt Ion:101 Resp: 1200278
 Ion Ratio Lower Upper
 101 100
 85 43.8 35.5 53.3
 151 73.1 59.4 89.0

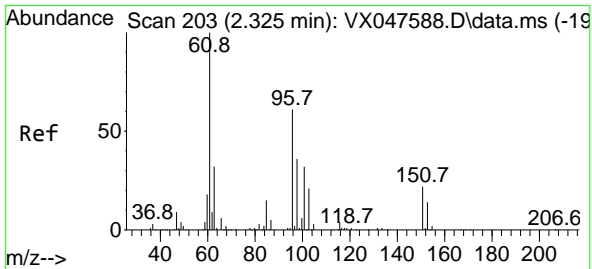
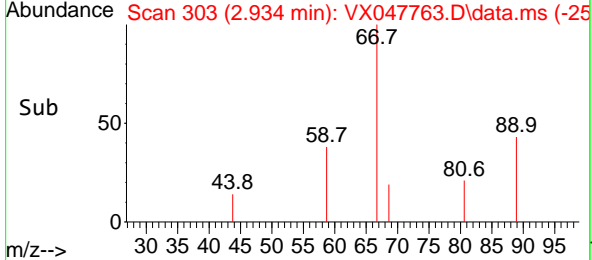
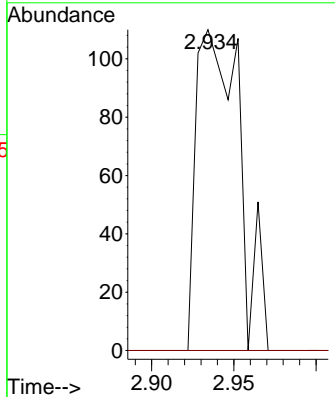
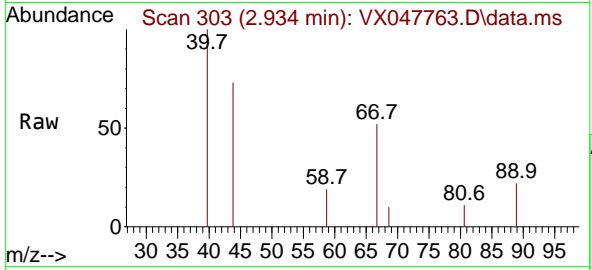




#11
 Tert butyl alcohol
 Concen: 0.920 ug/l
 RT: 2.934 min Scan# 30
 Delta R.T. -0.006 min
 Lab File: VX047763.D
 Acq: 24 Sep 2025 09:25

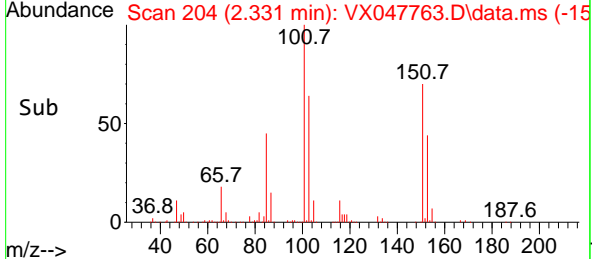
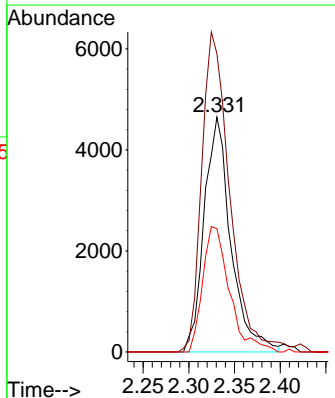
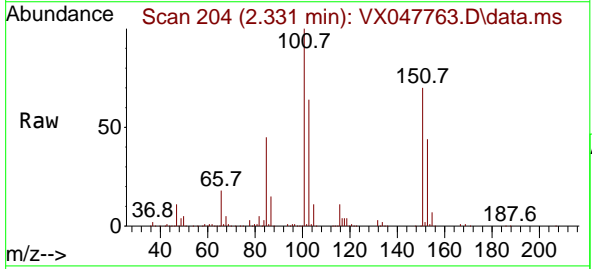
Instrument : MSVOA_X
 ClientSampleId : RE134D3-20250912

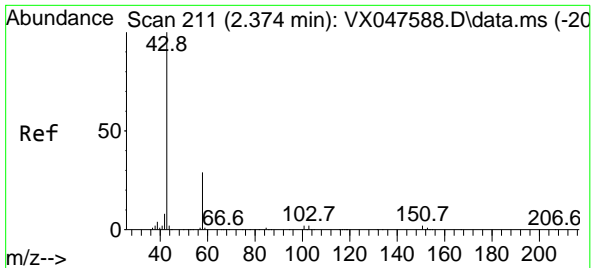
Tgt Ion: 59 Resp: 203
 Ion Ratio Lower Upper
 59 100
 57 0.0 8.3 12.5#



#12
 1,1-Dichloroethene
 Concen: 6.392 ug/l
 RT: 2.331 min Scan# 204
 Delta R.T. 0.006 min
 Lab File: VX047763.D
 Acq: 24 Sep 2025 09:25

Tgt Ion: 96 Resp: 9454
 Ion Ratio Lower Upper
 96 100
 61 127.1 131.0 196.6#
 98 52.5 47.7 71.5

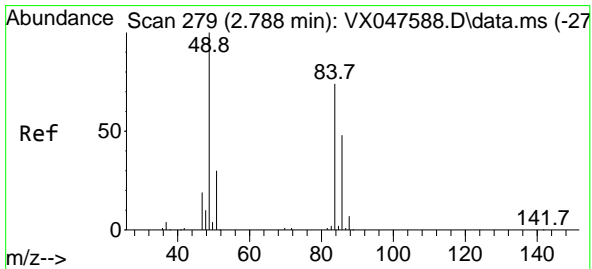
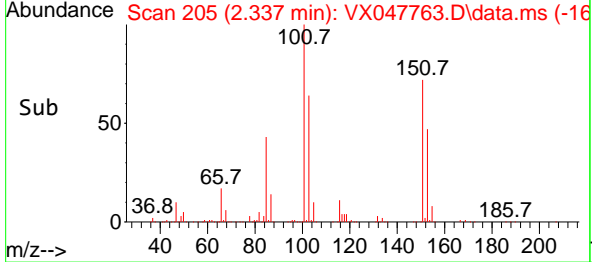
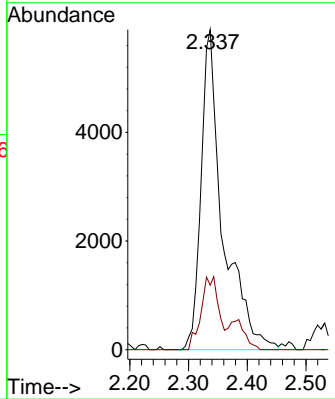
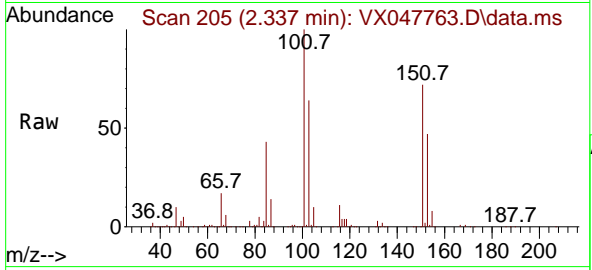




#16
 Acetone
 Concen: 17.640 ug/l
 RT: 2.337 min Scan# 20
 Delta R.T. -0.037 min
 Lab File: VX047763.D
 Acq: 24 Sep 2025 09:25

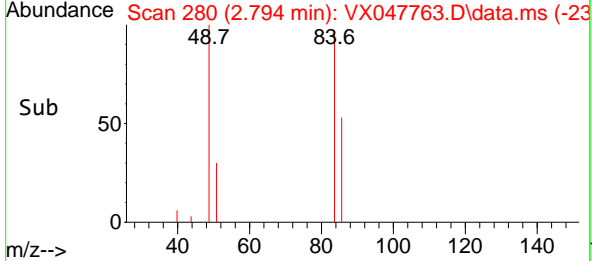
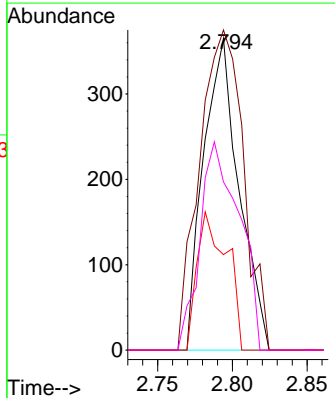
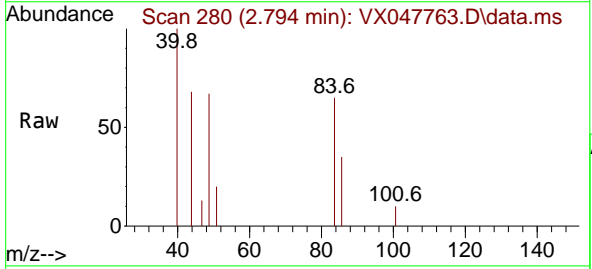
Instrument : MSVOA_X
 ClientSampleId : RE134D3-20250912

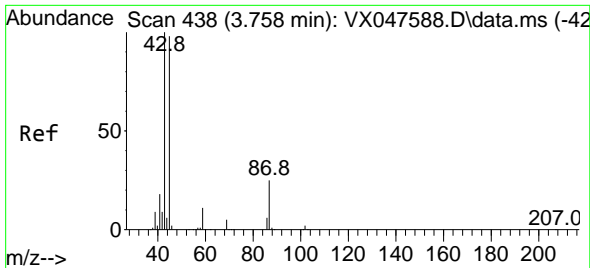
Tgt Ion: 43 Resp: 15197
 Ion Ratio Lower Upper
 43 100
 58 87.0 23.4 35.0#



#20
 Methylene Chloride
 Concen: 0.331 ug/l
 RT: 2.794 min Scan# 280
 Delta R.T. 0.006 min
 Lab File: VX047763.D
 Acq: 24 Sep 2025 09:25

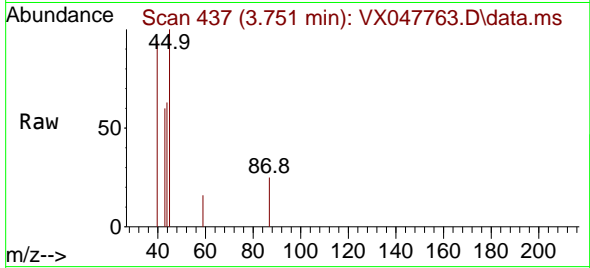
Tgt Ion: 84 Resp: 603
 Ion Ratio Lower Upper
 84 100
 49 102.7 108.6 162.8#
 51 30.7 32.6 48.8#
 86 54.0 52.0 78.0



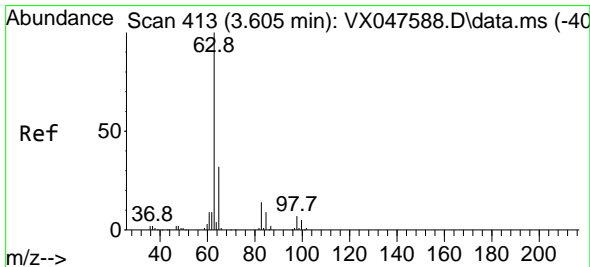
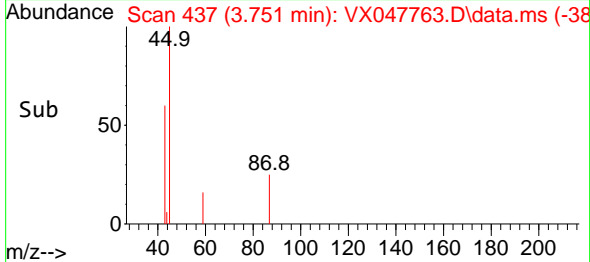
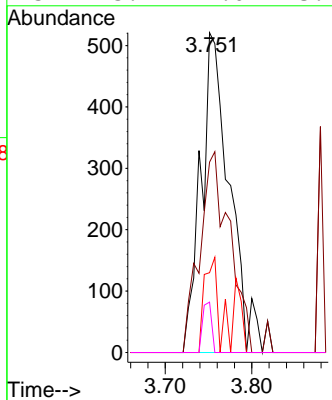


#22
 Diisopropyl ether
 Concen: 0.204 ug/l
 RT: 3.751 min Scan# 415
 Delta R.T. -0.006 min
 Lab File: VX047763.D
 Acq: 24 Sep 2025 09:25

Instrument : MSVOA_X
 ClientSampleId : RE134D3-20250912

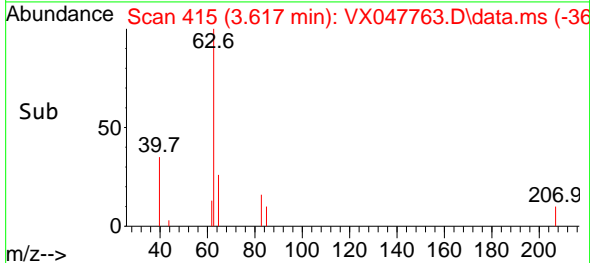
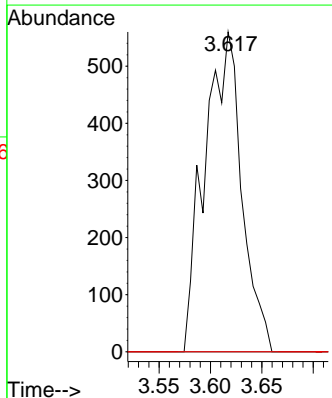
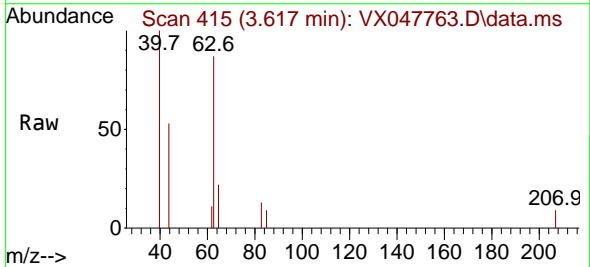


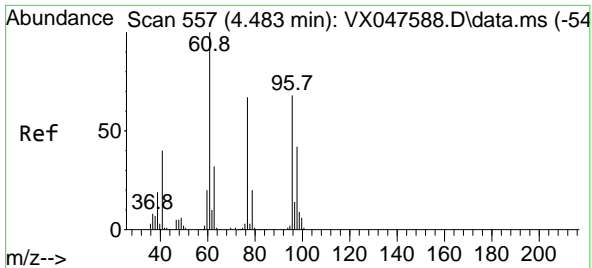
Tgt Ion	Resp	Lower	Upper
45	1205		
43	59.5	81.0	121.4#
87	25.0	20.3	30.5
59	15.7	9.0	13.4#



#24
 1,1-Dichloroethane
 Concen: 0.448 ug/l
 RT: 3.617 min Scan# 415
 Delta R.T. 0.012 min
 Lab File: VX047763.D
 Acq: 24 Sep 2025 09:25

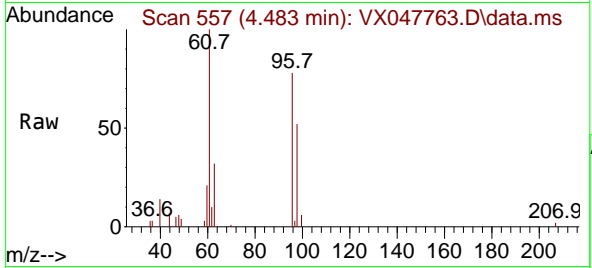
Tgt Ion	Resp	Lower	Upper
63	1408		
98	0.0	3.8	11.2#
100	0.0	2.3	6.9#



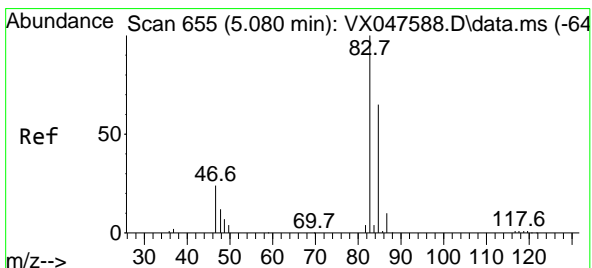
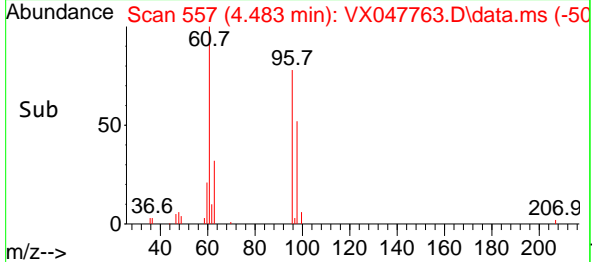
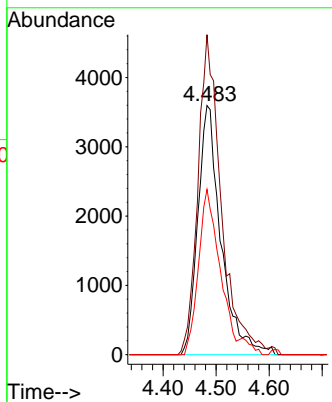


#27
 cis-1,2-Dichloroethene
 Concen: 5.586 ug/l
 RT: 4.483 min Scan# 51
 Delta R.T. -0.000 min
 Lab File: VX047763.D
 Acq: 24 Sep 2025 09:25

Instrument : MSVOA_X
 ClientSampleId : RE134D3-20250912

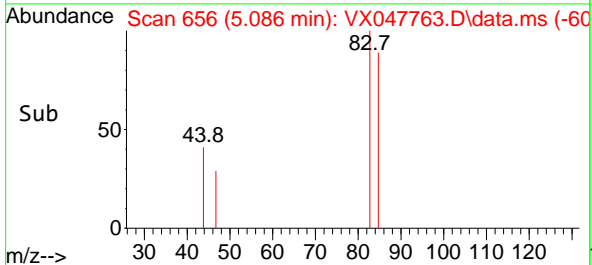
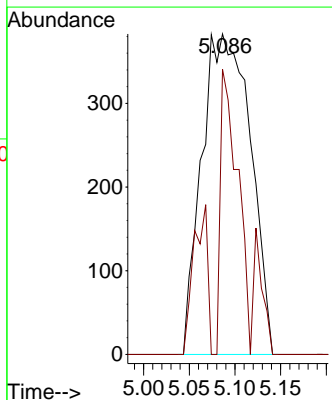
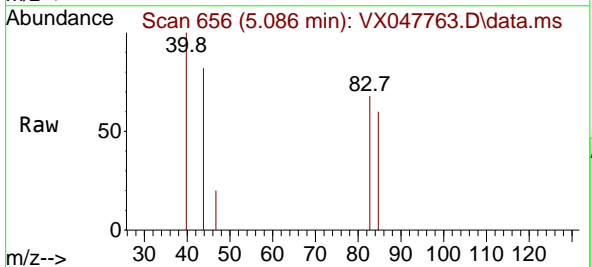


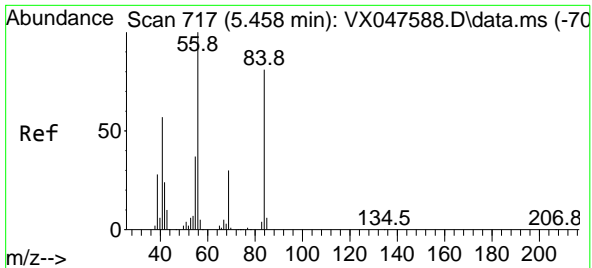
Tgt Ion	Resp	Lower	Upper
96	10892		
96	100		
61	130.3	0.0	303.2
98	64.3	0.0	127.8



#30
 Chloroform
 Concen: 0.446 ug/l
 RT: 5.086 min Scan# 656
 Delta R.T. 0.006 min
 Lab File: VX047763.D
 Acq: 24 Sep 2025 09:25

Tgt Ion	Resp	Lower	Upper
83	1418		
83	100		
85	89.0	51.8	77.6

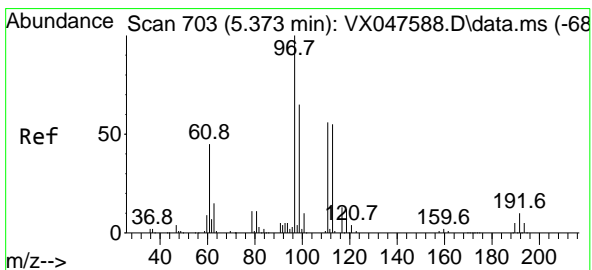
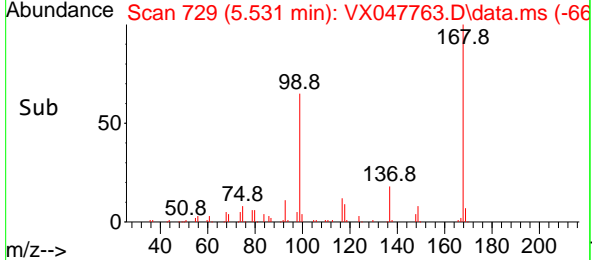
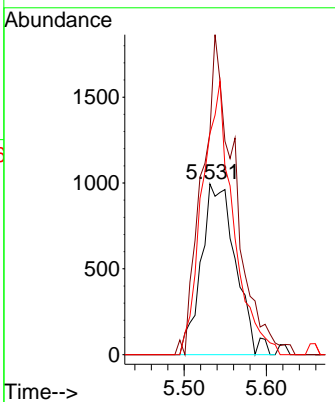
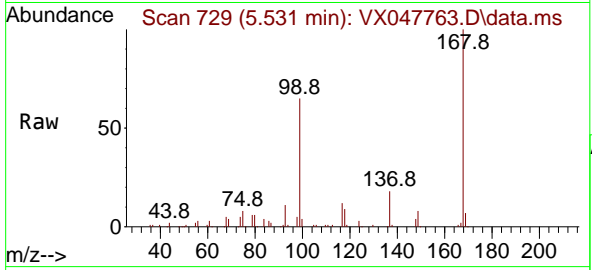




#31
 Cyclohexane
 Concen: 1.104 ug/l
 RT: 5.531 min Scan# 717
 Delta R.T. 0.073 min
 Lab File: VX047763.D
 Acq: 24 Sep 2025 09:25

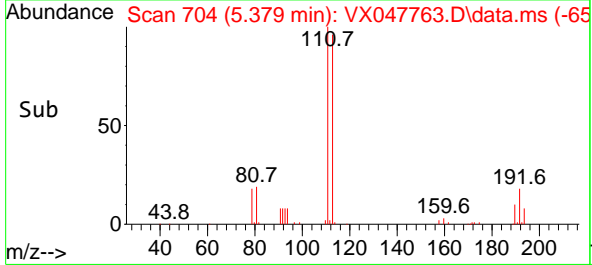
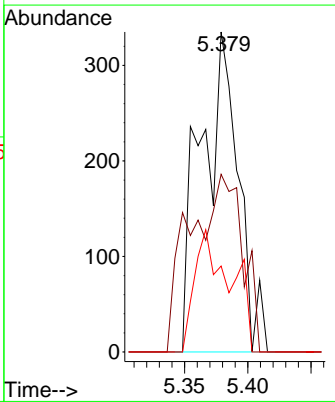
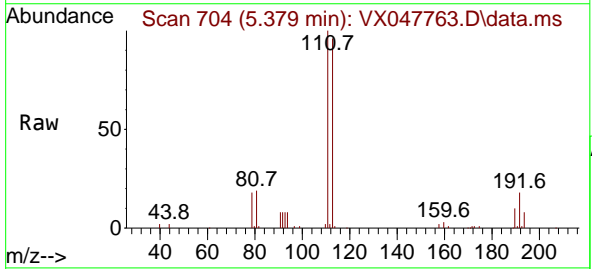
Instrument : MSVOA_X
 ClientSampleId : RE134D3-20250912

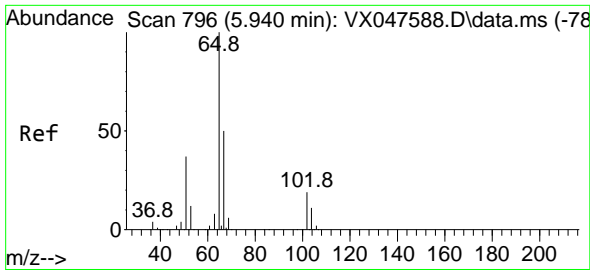
Tgt Ion	Resp	Lower	Upper
56	2891		
56	100		
69	130.1	23.8	35.8#
84	129.7	64.6	97.0#



#32
 1,1,1-Trichloroethane
 Concen: 0.255 ug/l
 RT: 5.379 min Scan# 704
 Delta R.T. 0.006 min
 Lab File: VX047763.D
 Acq: 24 Sep 2025 09:25

Tgt Ion	Resp	Lower	Upper
97	687		
97	100		
99	0.0	50.6	76.0#
61	36.7	35.8	53.8

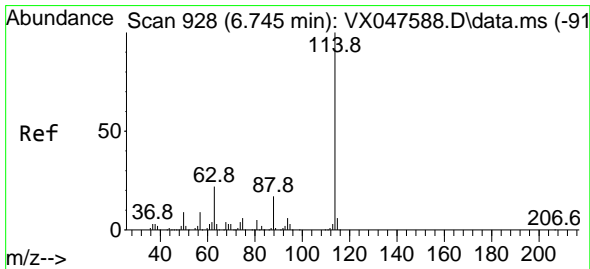
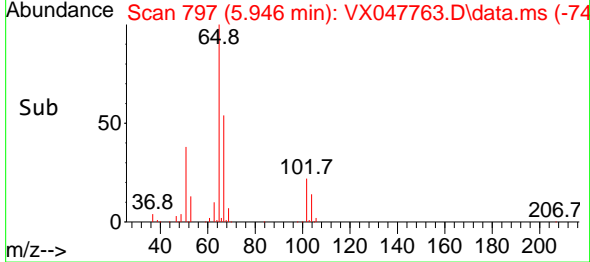
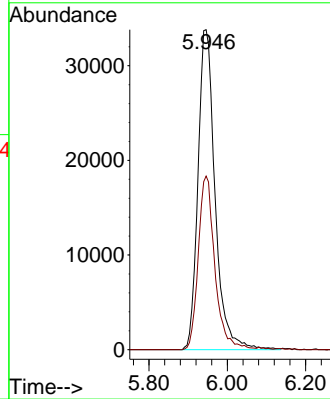
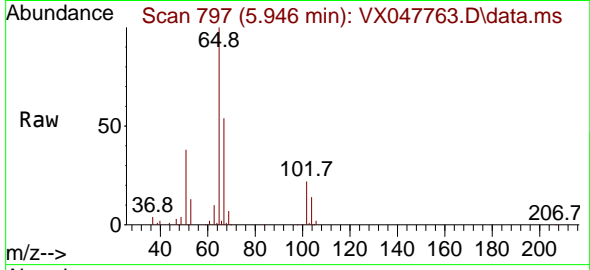




#33
 1,2-Dichloroethane-d4
 Concen: 51.829 ug/l
 RT: 5.946 min Scan# 796
 Delta R.T. 0.006 min
 Lab File: VX047763.D
 Acq: 24 Sep 2025 09:25

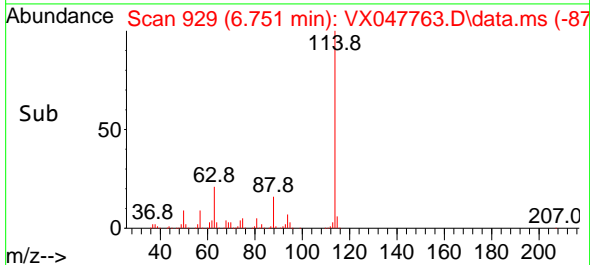
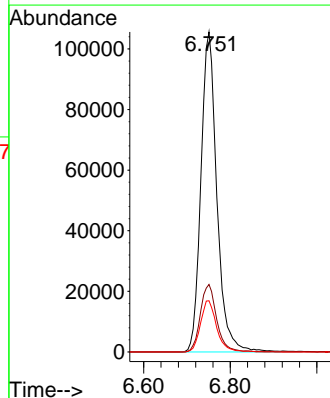
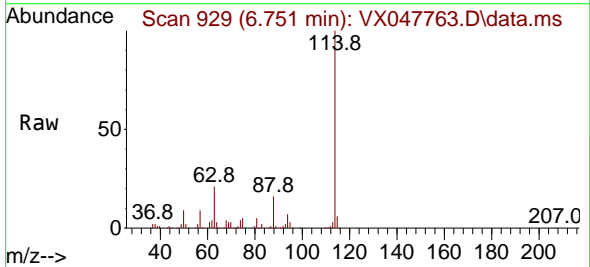
Instrument :
 MSVOA_X
 ClientSampleId :
 RE134D3-20250912

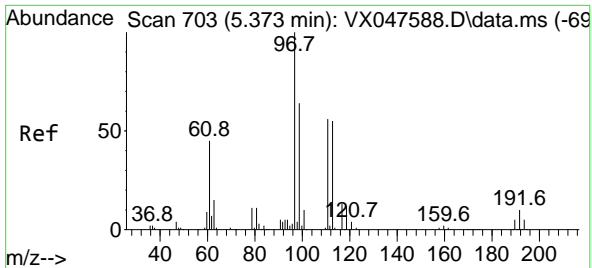
Tgt Ion: 65 Resp: 102695
 Ion Ratio Lower Upper
 65 100
 67 52.7 0.0 103.0



#34
 1,4-Difluorobenzene
 Concen: 50.000 ug/l
 RT: 6.751 min Scan# 929
 Delta R.T. 0.006 min
 Lab File: VX047763.D
 Acq: 24 Sep 2025 09:25

Tgt Ion: 114 Resp: 269681
 Ion Ratio Lower Upper
 114 100
 63 21.1 0.0 44.0
 88 16.0 0.0 34.2

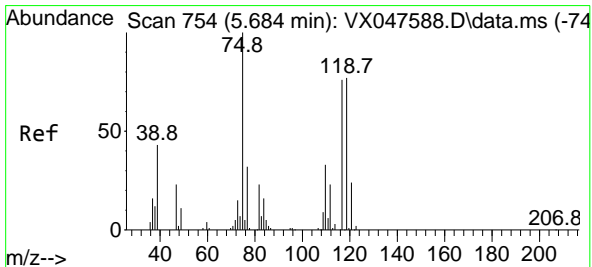
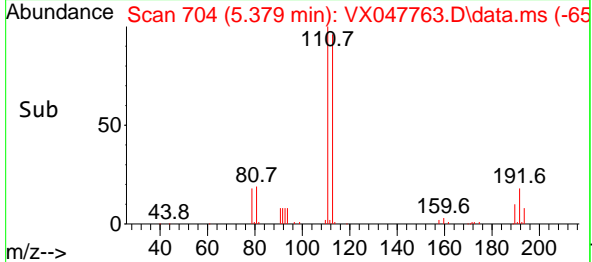
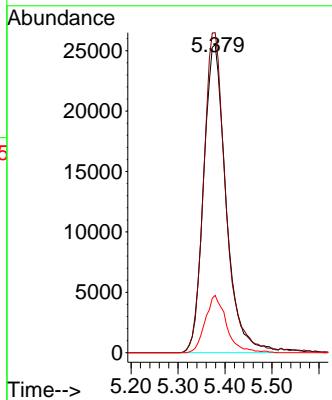
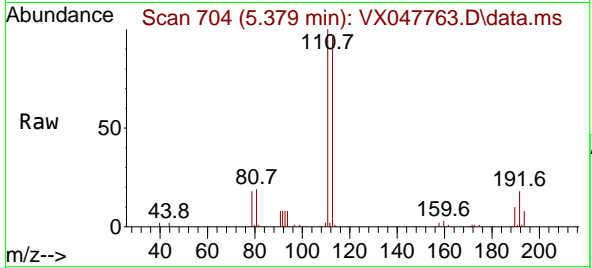




#35
 Dibromofluoromethane
 Concen: 46.826 ug/l
 RT: 5.379 min Scan# 703
 Delta R.T. 0.006 min
 Lab File: VX047763.D
 Acq: 24 Sep 2025 09:25

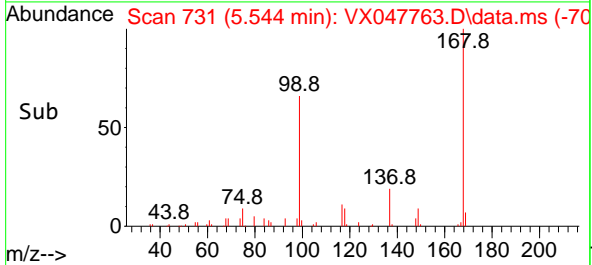
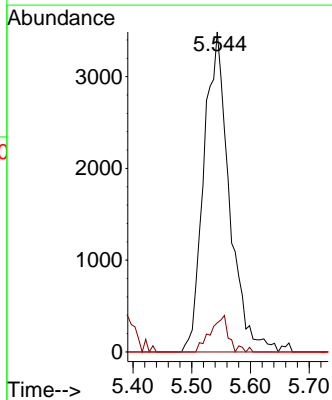
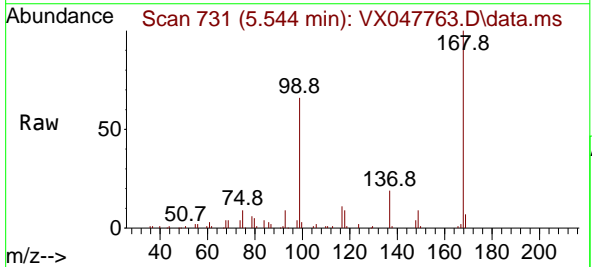
Instrument : MSVOA_X
 ClientSampleId : RE134D3-20250912

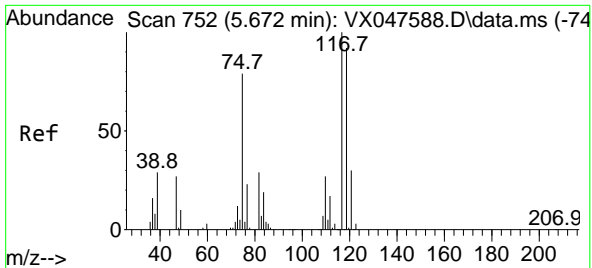
Tgt Ion	Resp	Lower	Upper
113	84691		
113	100		
111	102.1	80.9	121.3
192	17.6	14.2	21.4



#36
 1,1-Dichloropropene
 Concen: 3.981 ug/l
 RT: 5.544 min Scan# 731
 Delta R.T. -0.140 min
 Lab File: VX047763.D
 Acq: 24 Sep 2025 09:25

Tgt Ion	Resp	Lower	Upper
75	10520		
75	100		
110	8.2	16.7	50.1#
77	0.0	24.3	36.5#



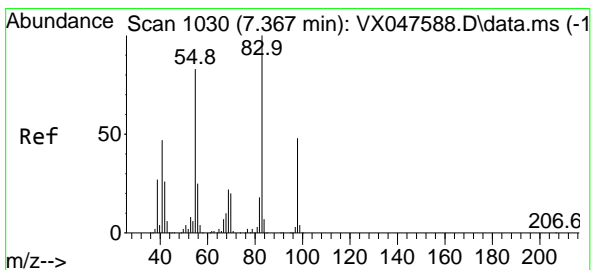
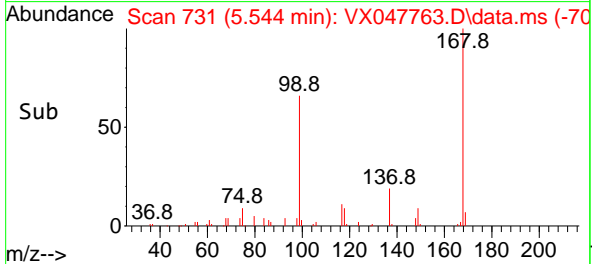
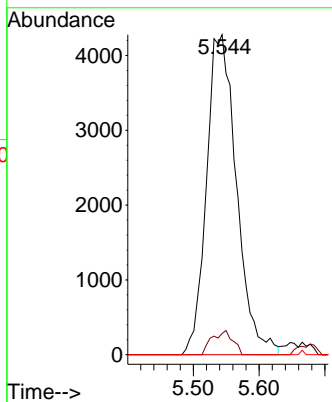
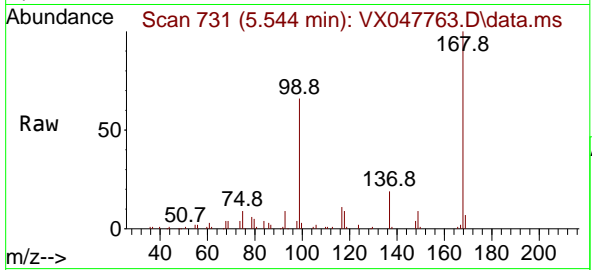


#38
 Carbon Tetrachloride
 Concen: 4.734 ug/l
 RT: 5.544 min Scan# 711
 Delta R.T. -0.128 min
 Lab File: VX047763.D
 Acq: 24 Sep 2025 09:25

Instrument : MSVOA_X
 ClientSampleId : RE134D3-20250912

Tgt Ion:117 Resp: 13593

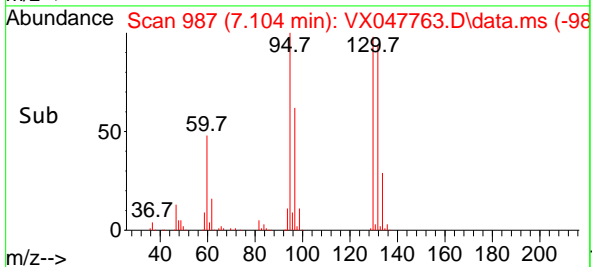
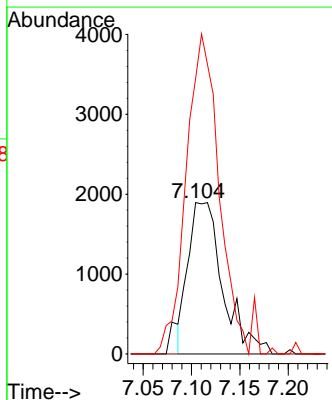
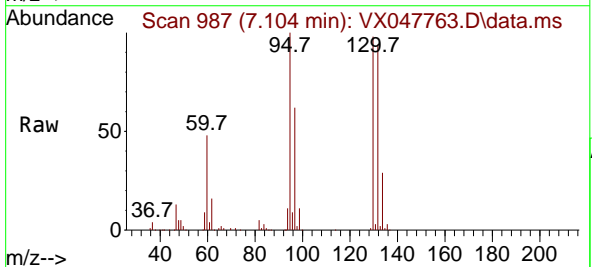
Ion	Ratio	Lower	Upper
117	100		
119	6.6	73.4	110.2#
121	0.0	23.8	35.6#

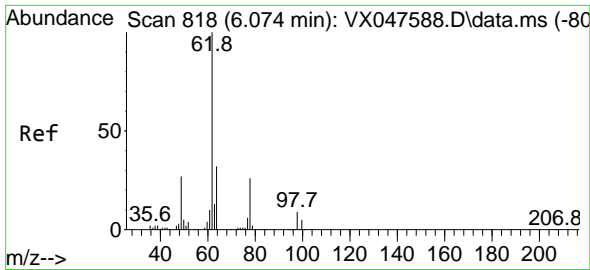


#39
 Methylcyclohexane
 Concen: 1.582 ug/l
 RT: 7.104 min Scan# 987
 Delta R.T. -0.262 min
 Lab File: VX047763.D
 Acq: 24 Sep 2025 09:25

Tgt Ion: 83 Resp: 4745

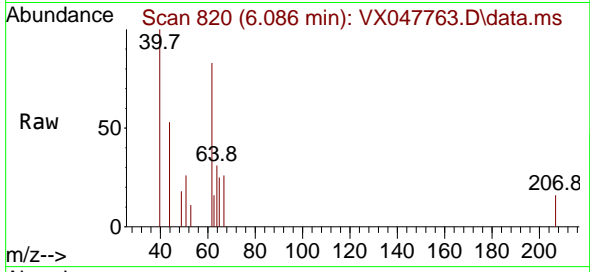
Ion	Ratio	Lower	Upper
83	100		
55	0.0	66.4	99.6#
98	293.6	38.1	57.1#



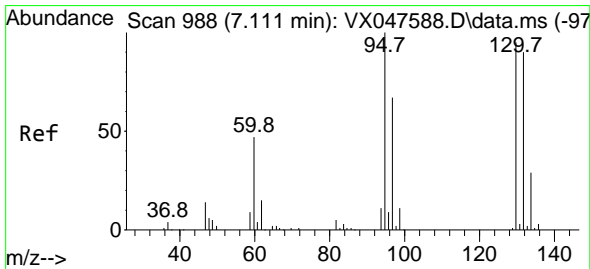
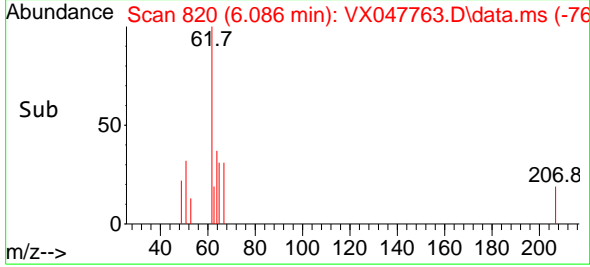
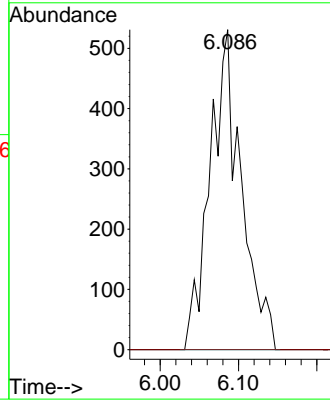


#42
 1,2-Dichloroethane
 Concen: 0.482 ug/l
 RT: 6.086 min Scan# 818
 Delta R.T. 0.012 min
 Lab File: VX047763.D
 Acq: 24 Sep 2025 09:25

Instrument :
 MSVOA_X
 ClientSampleId :
 RE134D3-20250912

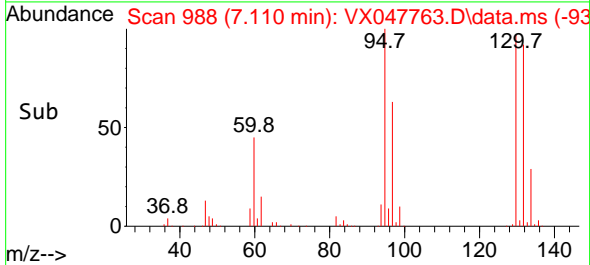
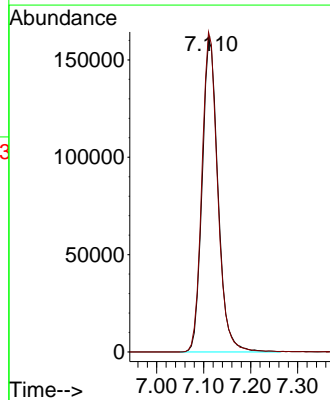
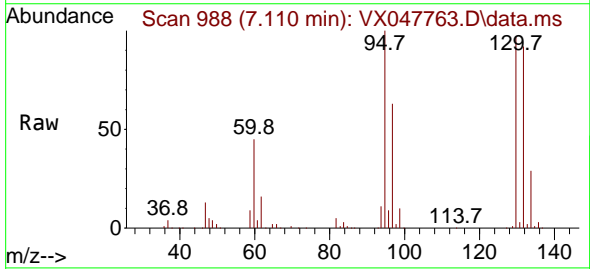


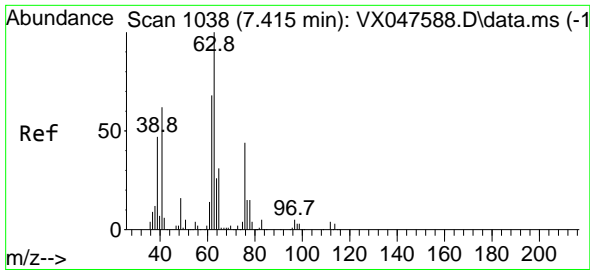
Tgt Ion: 62 Resp: 1472
 Ion Ratio Lower Upper
 62 100
 98 0.0 0.0 17.0



#44
 Trichloroethene
 Concen: 194.845 ug/l
 RT: 7.110 min Scan# 988
 Delta R.T. -0.000 min
 Lab File: VX047763.D
 Acq: 24 Sep 2025 09:25

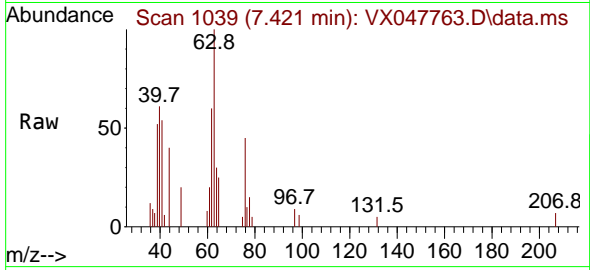
Tgt Ion:130 Resp: 378121
 Ion Ratio Lower Upper
 130 100
 95 102.6 0.0 210.8



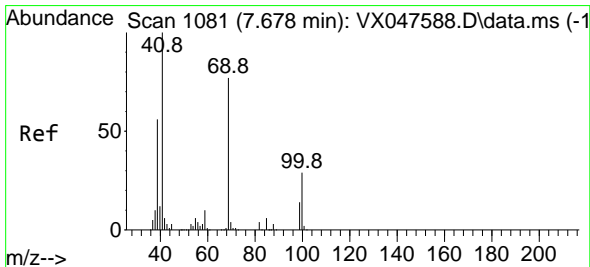
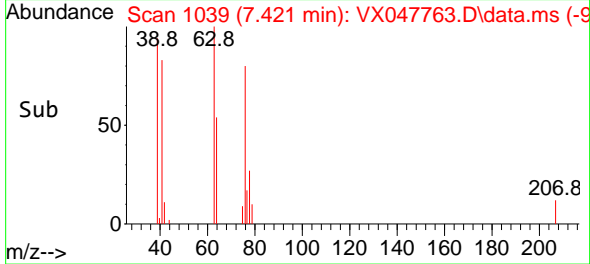
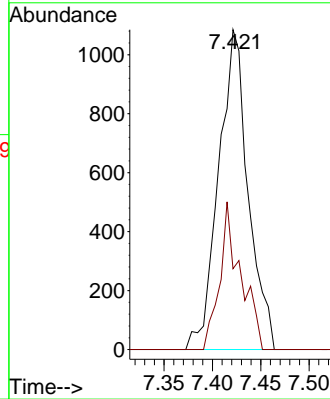


#45
 1,2-Dichloropropane
 Concen: 1.121 ug/l
 RT: 7.421 min Scan# 1039
 Delta R.T. 0.006 min
 Lab File: VX047763.D
 Acq: 24 Sep 2025 09:25

Instrument : MSVOA_X
 ClientSampleId : RE134D3-20250912

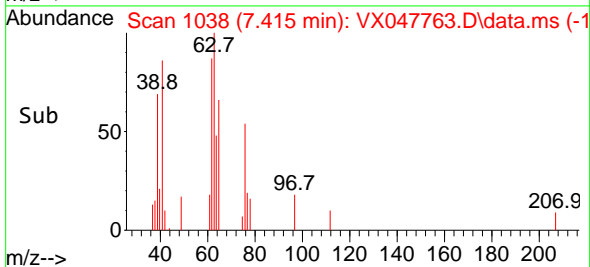
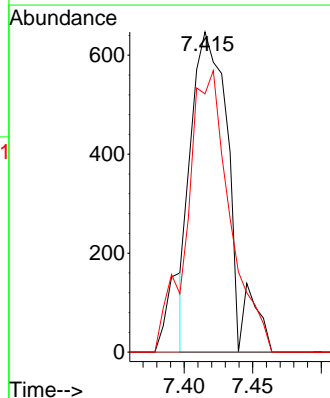
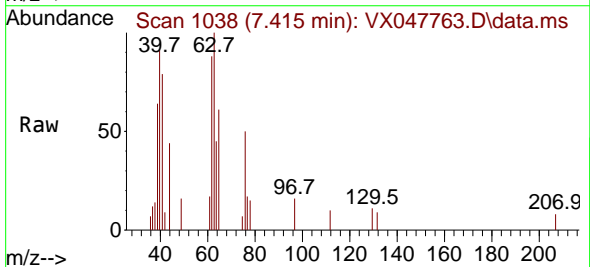


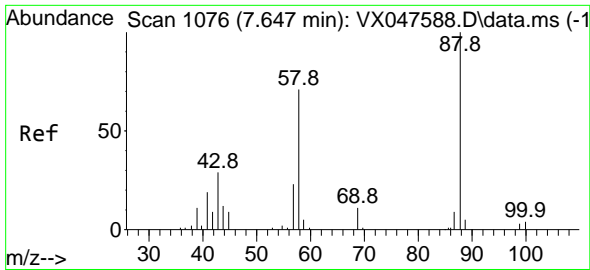
Tgt Ion: 63 Resp: 2305
 Ion Ratio Lower Upper
 63 100
 65 25.3 24.7 37.1



#48
 Methyl methacrylate
 Concen: 0.544 ug/l
 RT: 7.415 min Scan# 1038
 Delta R.T. -0.262 min
 Lab File: VX047763.D
 Acq: 24 Sep 2025 09:25

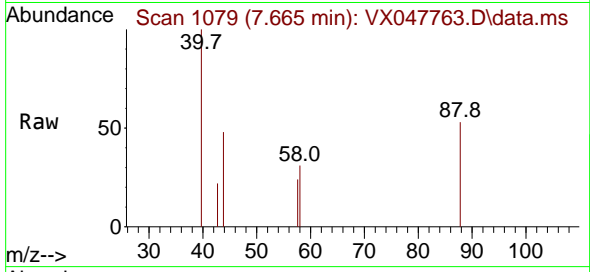
Tgt Ion: 41 Resp: 1257
 Ion Ratio Lower Upper
 41 100
 69 0.0 61.4 92.2#
 39 87.4 45.8 68.6#



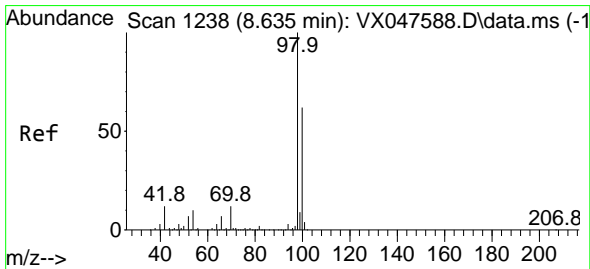
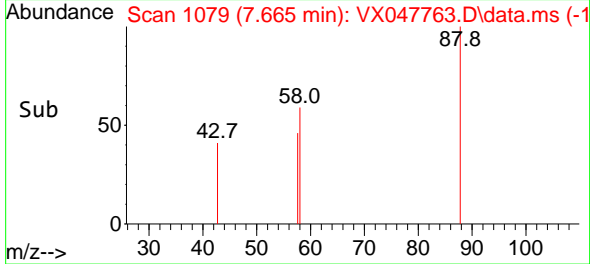
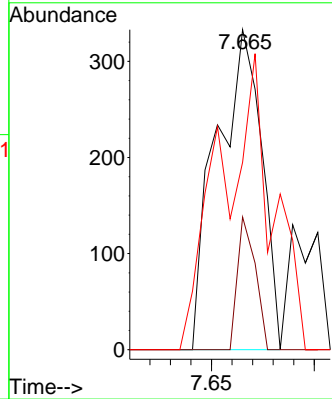


#49
 1,4-Dioxane
 Concen: 21.830 ug/l
 RT: 7.665 min Scan# 1079
 Delta R.T. 0.018 min
 Lab File: VX047763.D
 Acq: 24 Sep 2025 09:25

Instrument : MSVOA_X
 ClientSampleId : RE134D3-20250912

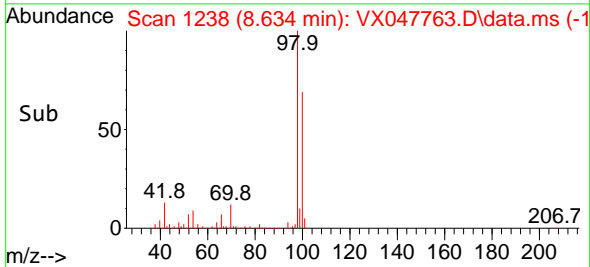
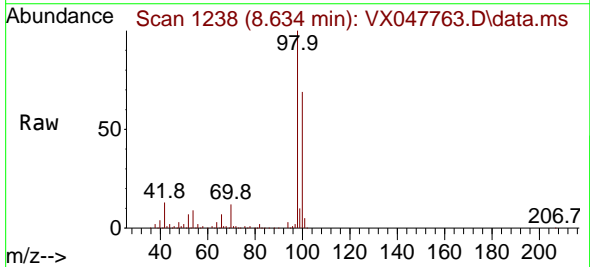
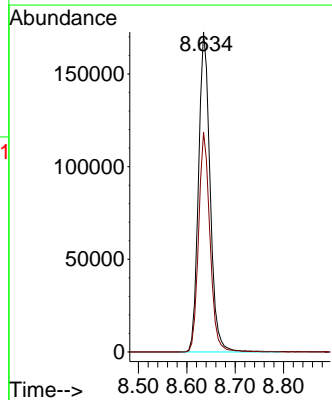


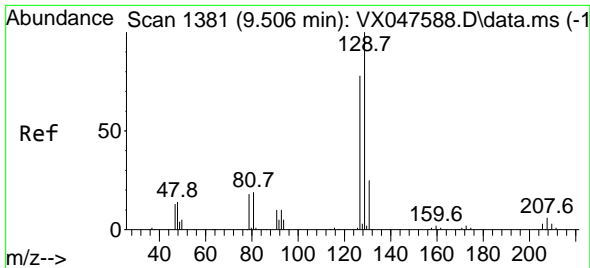
Tgt Ion: 88 Resp: 510
 Ion Ratio Lower Upper
 88 100
 43 16.3 30.2 45.2#
 58 63.1 59.5 89.3



#50
 Toluene-d8
 Concen: 45.713 ug/l
 RT: 8.634 min Scan# 1238
 Delta R.T. -0.000 min
 Lab File: VX047763.D
 Acq: 24 Sep 2025 09:25

Tgt Ion: 98 Resp: 286083
 Ion Ratio Lower Upper
 98 100
 100 67.5 53.0 79.4

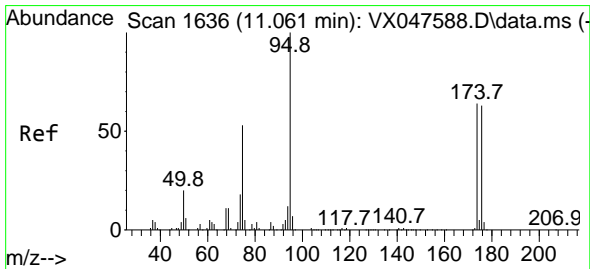
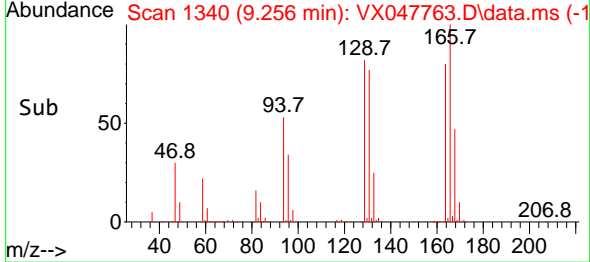
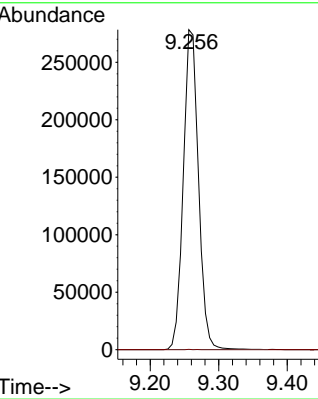
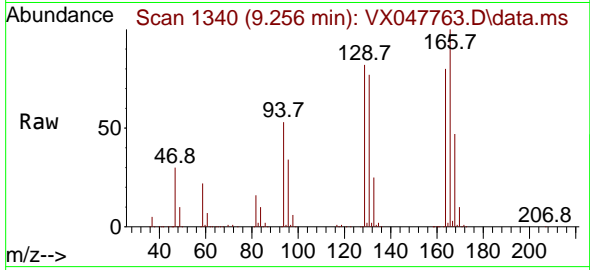




#60
 Dibromochloromethane
 Concen: 194.696 ug/l
 RT: 9.256 min Scan# 11
 Delta R.T. -0.250 min
 Lab File: VX047763.D
 Acq: 24 Sep 2025 09:25

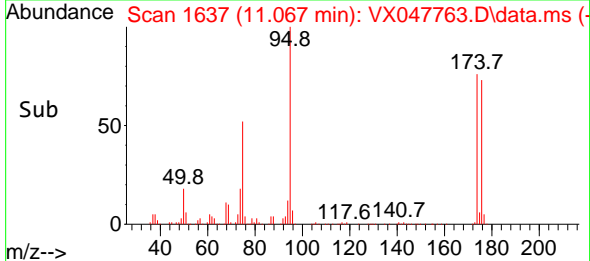
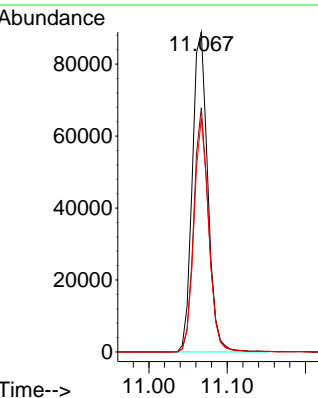
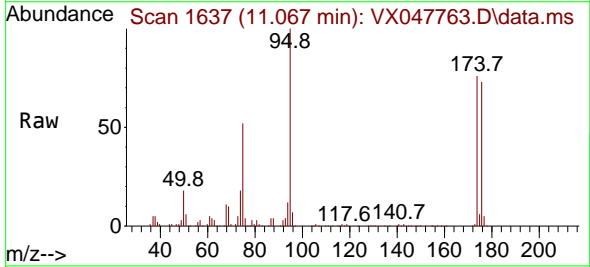
Instrument : MSVOA_X
 ClientSampleId : RE134D3-20250912

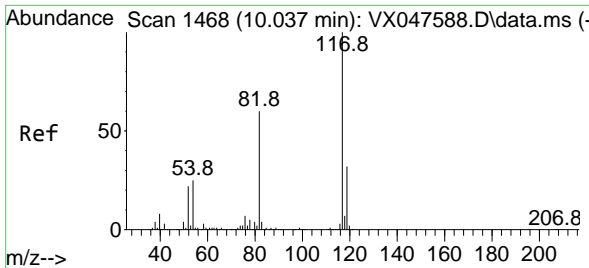
Tgt Ion:129 Resp: 427787
 Ion Ratio Lower Upper
 129 100
 127 0.0 38.4 115.2#



#62
 4-Bromofluorobenzene
 Concen: 51.223 ug/l
 RT: 11.067 min Scan# 1637
 Delta R.T. 0.006 min
 Lab File: VX047763.D
 Acq: 24 Sep 2025 09:25

Tgt Ion: 95 Resp: 121659
 Ion Ratio Lower Upper
 95 100
 174 73.3 0.0 141.6
 176 70.0 0.0 138.4



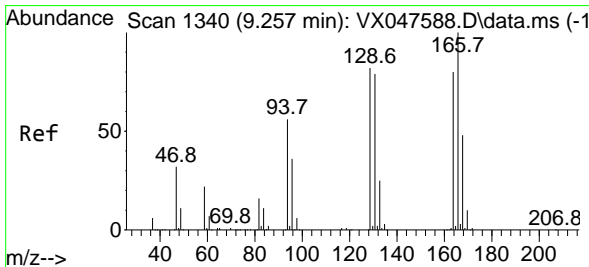
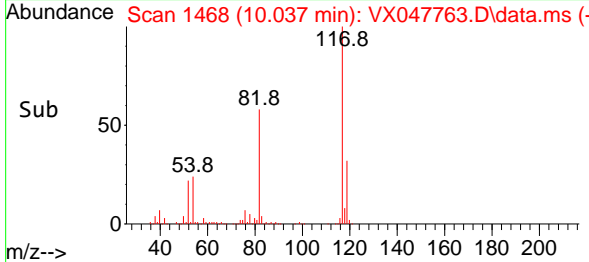
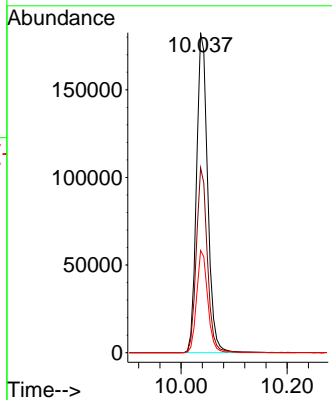
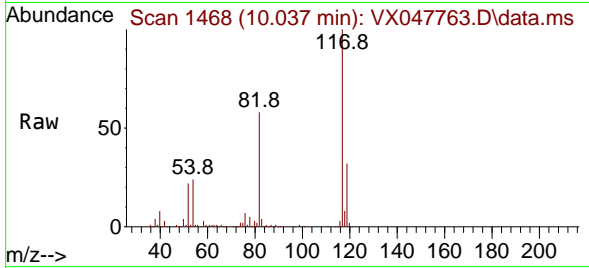


#63
 Chlorobenzene-d5
 Concen: 50.000 ug/l
 RT: 10.037 min Scan# 1468
 Delta R.T. -0.000 min
 Lab File: VX047763.D
 Acq: 24 Sep 2025 09:25

Instrument : MSVOA_X
 ClientSampleId : RE134D3-20250912

Tgt Ion:117 Resp: 267242

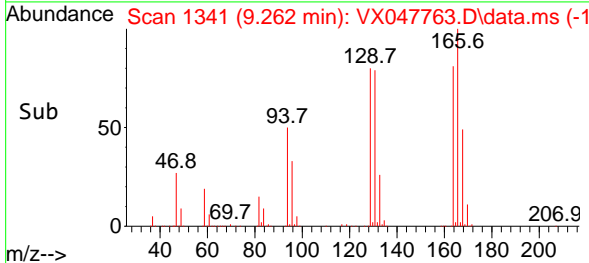
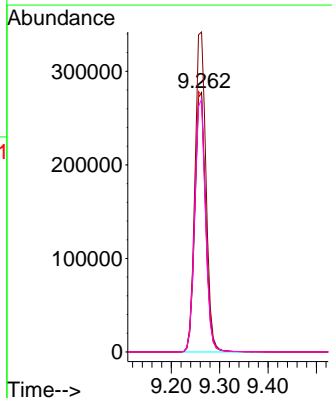
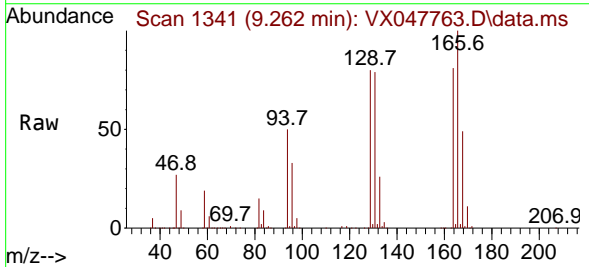
Ion	Ratio	Lower	Upper
117	100		
82	57.8	47.8	71.6
119	32.0	25.2	37.8

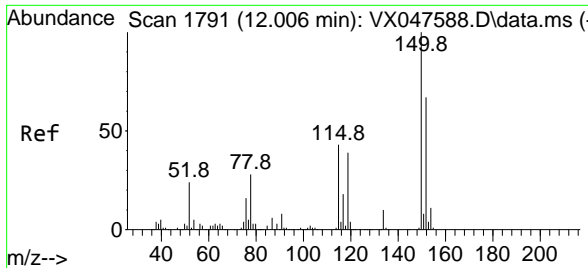


#64
 Tetrachloroethene
 Concen: 245.927 ug/l
 RT: 9.262 min Scan# 1341
 Delta R.T. 0.006 min
 Lab File: VX047763.D
 Acq: 24 Sep 2025 09:25

Tgt Ion:164 Resp: 428438

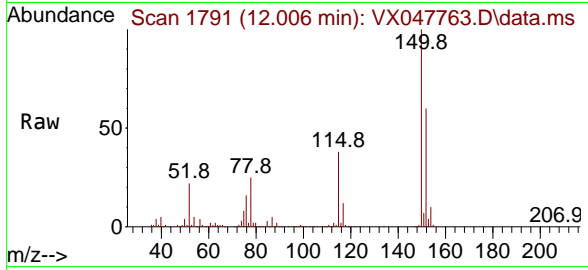
Ion	Ratio	Lower	Upper
164	100		
166	123.4	100.2	150.2
129	98.7	81.8	122.6
131	97.4	78.6	118.0





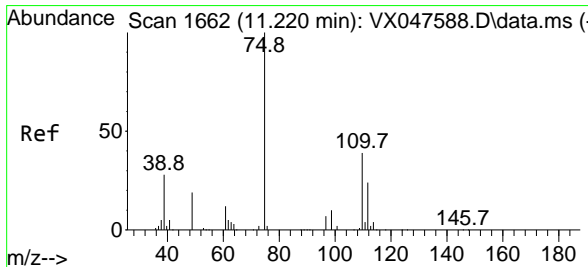
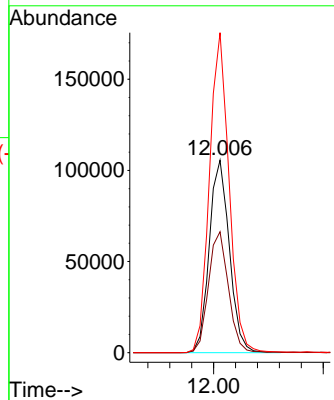
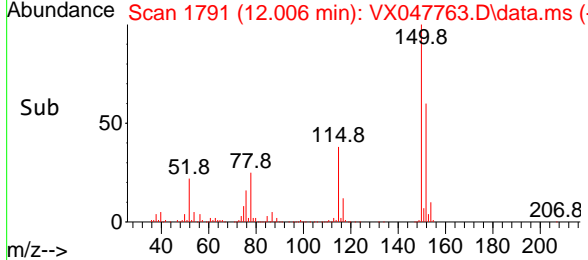
#72
 1,4-Dichlorobenzene-d4
 Concen: 50.000 ug/l
 RT: 12.006 min Scan# 11
 Delta R.T. -0.000 min
 Lab File: VX047763.D
 Acq: 24 Sep 2025 09:25

Instrument : MSVOA_X
 ClientSampleId : RE134D3-20250912

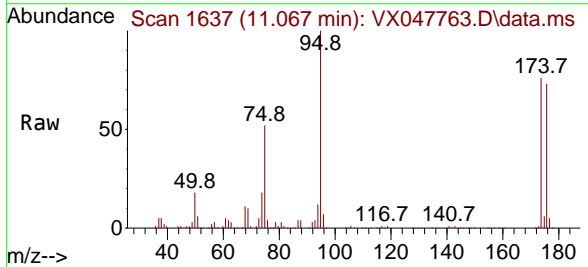


Tgt Ion:152 Resp: 134755

Ion	Ratio	Lower	Upper
152	100		
115	62.5	44.9	134.5
150	161.8	0.0	352.0

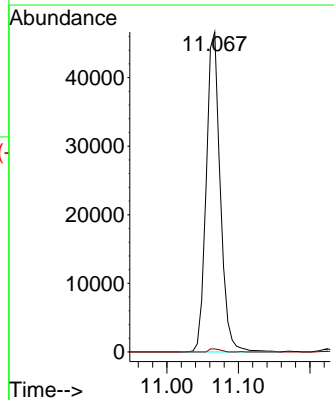
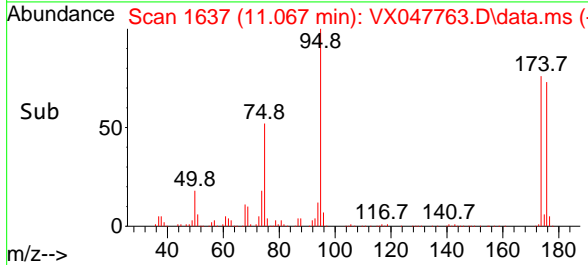


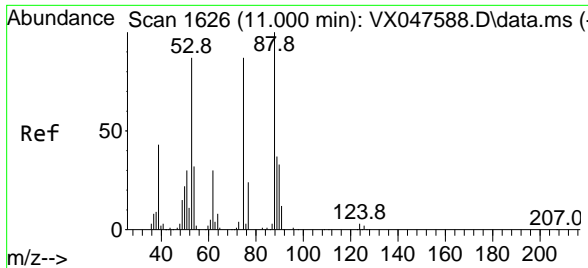
#76
 1,2,3-Trichloropropane
 Concen: 23.284 ug/l
 RT: 11.067 min Scan# 1637
 Delta R.T. -0.153 min
 Lab File: VX047763.D
 Acq: 24 Sep 2025 09:25



Tgt Ion: 75 Resp: 63526

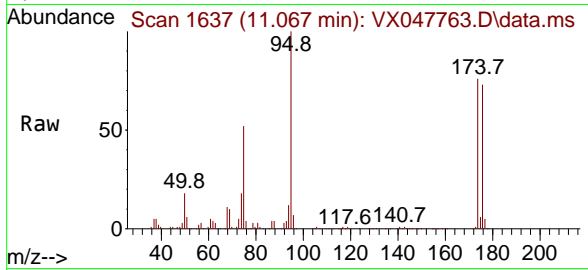
Ion	Ratio	Lower	Upper
75	100		
77	0.8	18.8	56.4#





#81
 trans-1,4-Dichloro-2-butene
 Concen: 59.376 ug/l
 RT: 11.067 min Scan# 10
 Delta R.T. 0.067 min
 Lab File: VX047763.D
 Acq: 24 Sep 2025 09:25

Instrument :
 MSVOA_X
 ClientSampleId :
 RE134D3-20250912



Tgt Ion: 75 Resp: 63526

Ion	Ratio	Lower	Upper
75	100		
53	0.0	83.4	125.2#
89	0.0	36.3	54.5#

