

Data Path : Z:\voasrv\HPCHEM1\MSVOA_X\Data\VX092325\
 Data File : VX047764.D
 Acq On : 24 Sep 2025 09:46
 Operator : JC/MD
 Sample : Q3127-13
 Misc : 5.0mL/MSVOA_X/WATER
 ALS Vial : 53 Sample Multiplier: 1

Instrument :
 MSVOA_X
 ClientSampleId :
 TT119S1-20250916

Quant Time: Sep 25 01:20:50 2025
 Quant Method : Z:\voasrv\HPCHEM1\MSVOA_X\Method\82X091625W.M
 Quant Title : SW846 8260
 QLast Update : Wed Sep 17 06:39:58 2025
 Response via : Initial Calibration

Compound	R.T.	QIon	Response	Conc	Units	Dev(Min)

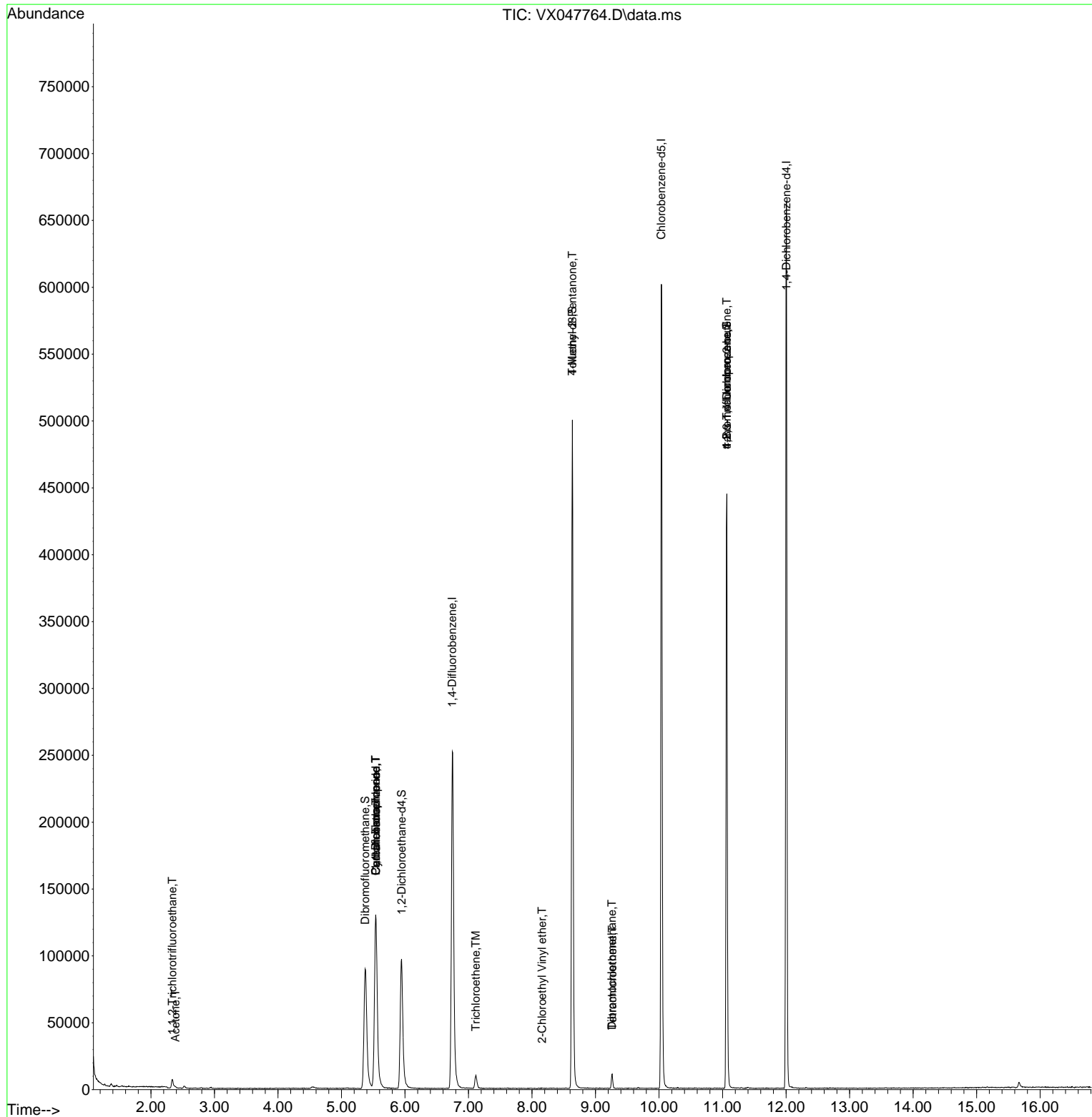
Internal Standards						
1) Pentafluorobenzene	5.544	168	131958	50.000	ug/l	0.00
34) 1,4-Difluorobenzene	6.745	114	274545	50.000	ug/l	0.00
63) Chlorobenzene-d5	10.037	117	278664	50.000	ug/l	0.00
72) 1,4-Dichlorobenzene-d4	12.006	152	140271	50.000	ug/l	0.00
System Monitoring Compounds						
33) 1,2-Dichloroethane-d4	5.946	65	104294	49.653	ug/l	0.00
Spiked Amount	50.000	Range 78 - 117	Recovery	=	99.300%	
35) Dibromofluoromethane	5.373	113	88310	47.962	ug/l	0.00
Spiked Amount	50.000	Range 75 - 124	Recovery	=	95.920%	
50) Toluene-d8	8.635	98	306792	48.154	ug/l	0.00
Spiked Amount	50.000	Range 92 - 112	Recovery	=	96.300%	
62) 4-Bromofluorobenzene	11.067	95	128728	53.239	ug/l	0.00
Spiked Amount	50.000	Range 83 - 123	Recovery	=	106.480%	
Target Compounds						
						Qvalue
9) 1,1,2-Trichlorotrifluo...	2.337	101	3045	1.995	ug/l	97
16) Acetone	2.386	43	1390	1.522	ug/l #	73
31) Cyclohexane	5.544	56	2765	0.996	ug/l #	1
36) 1,1-Dichloropropene	5.538	75	10998	4.088	ug/l #	50
38) Carbon Tetrachloride	5.544	117	13886	4.750	ug/l #	17
44) Trichloroethene	7.117	130	4474	2.265	ug/l	99
51) 4-Methyl-2-Pentanone	8.635	43	1422	0.543	ug/l #	1
58) 2-Chloroethyl Vinyl ether	8.159	63	218	8.043	ug/l #	47
60) Dibromochloromethane	9.256	129	1977	0.884	ug/l #	11
64) Tetrachloroethene	9.263	164	2234	1.230	ug/l #	84
76) 1,2,3-Trichloropropane	11.067	75	66080	23.267	ug/l #	39
81) trans-1,4-Dichloro-2-b...	11.067	75	66080	59.335	ug/l #	8

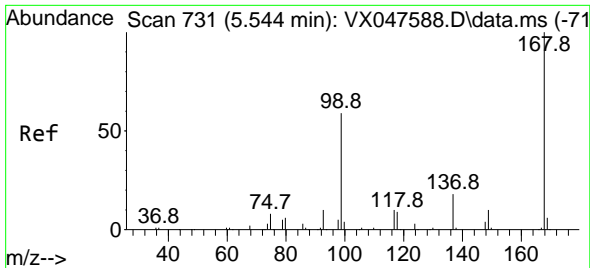
(#) = qualifier out of range (m) = manual integration (+) = signals summed

Data Path : Z:\voasrv\HPCHEM1\MSVOA_X\Data\VX092325\
 Data File : VX047764.D
 Acq On : 24 Sep 2025 09:46
 Operator : JC/MD
 Sample : Q3127-13
 Misc : 5.0mL/MSVOA_X/WATER
 ALS Vial : 53 Sample Multiplier: 1

Instrument :
 MSVOA_X
 ClientSampleId :
 TT119S1-20250916

Quant Time: Sep 25 01:20:50 2025
 Quant Method : Z:\voasrv\HPCHEM1\MSVOA_X\Method\82X091625W.M
 Quant Title : SW846 8260
 QLast Update : Wed Sep 17 06:39:58 2025
 Response via : Initial Calibration

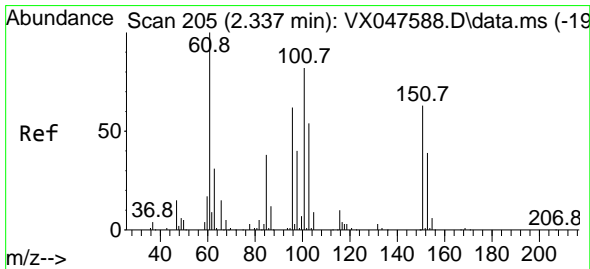
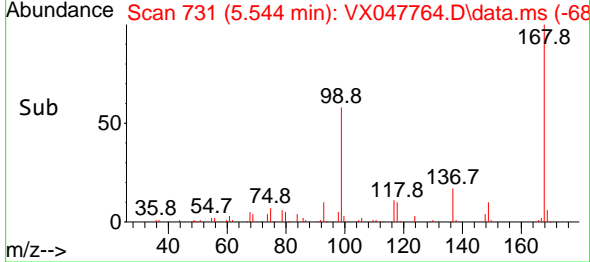
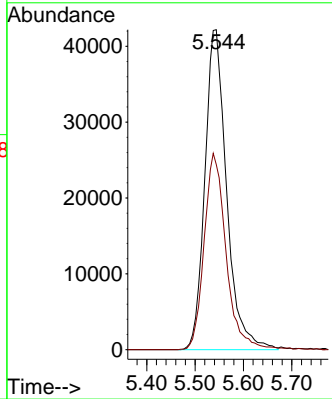
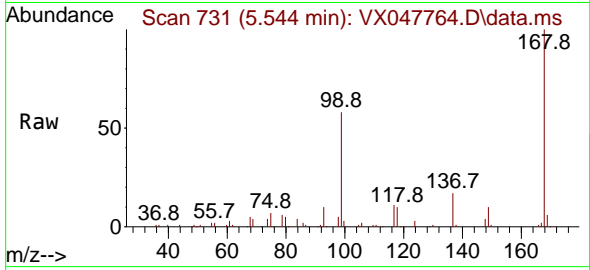




#1
 Pentafluorobenzene
 Concen: 50.000 ug/l
 RT: 5.544 min Scan# 71
 Delta R.T. -0.000 min
 Lab File: VX047764.D
 Acq: 24 Sep 2025 09:46

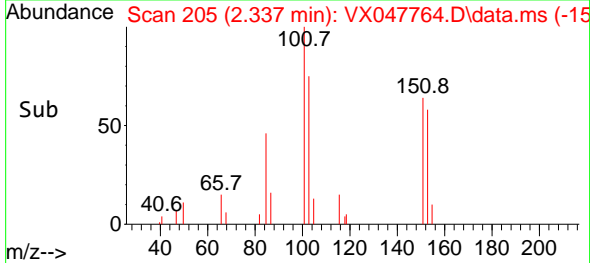
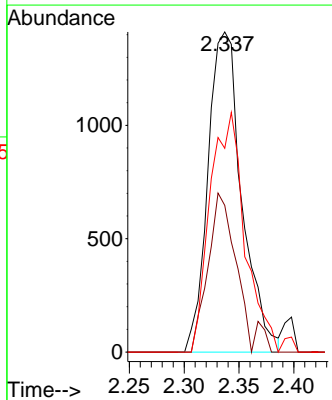
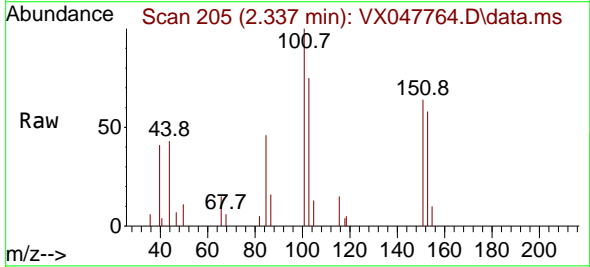
Instrument : MSVOA_X
 ClientSampleId : TT119S1-20250916

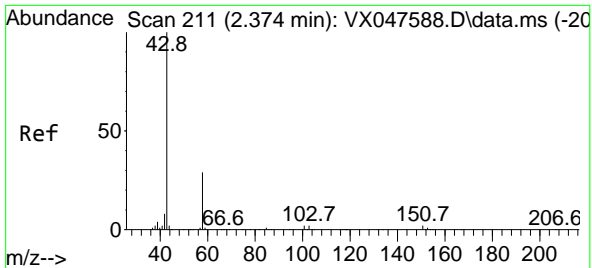
Tgt Ion:168 Resp: 131958
 Ion Ratio Lower Upper
 168 100
 99 57.8 48.8 73.2



#9
 1,1,2-Trichlorotrifluoroethane
 Concen: 1.995 ug/l
 RT: 2.337 min Scan# 205
 Delta R.T. -0.000 min
 Lab File: VX047764.D
 Acq: 24 Sep 2025 09:46

Tgt Ion:101 Resp: 3045
 Ion Ratio Lower Upper
 101 100
 85 42.7 35.5 53.3
 151 76.5 59.4 89.0

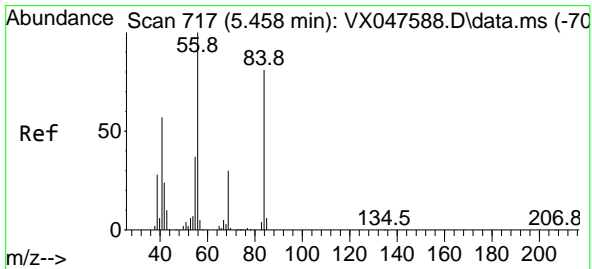
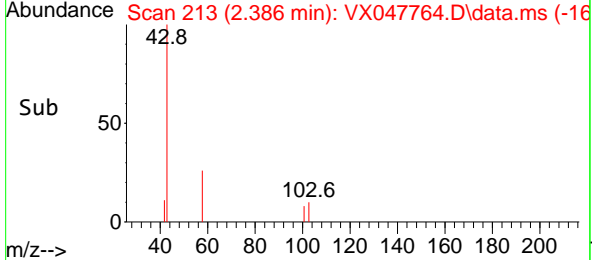
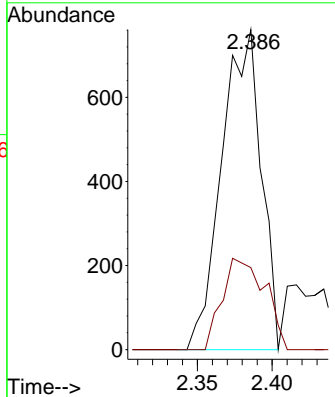
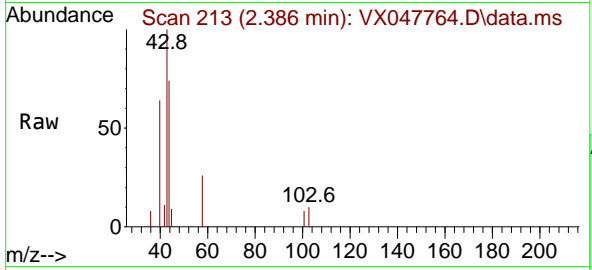




#16
 Acetone
 Concen: 1.522 ug/l
 RT: 2.386 min Scan# 211
 Delta R.T. 0.012 min
 Lab File: VX047764.D
 Acq: 24 Sep 2025 09:46

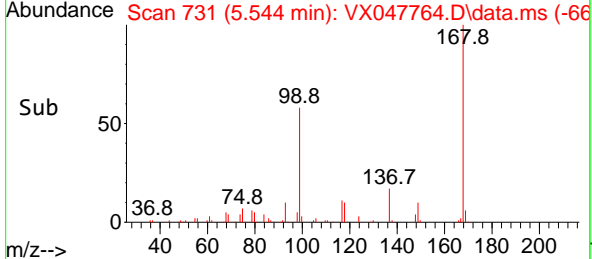
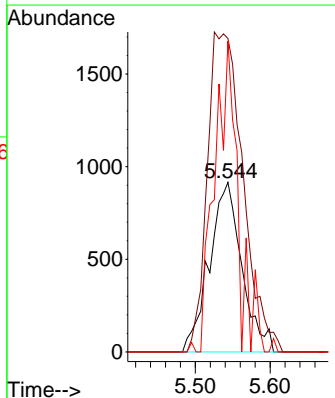
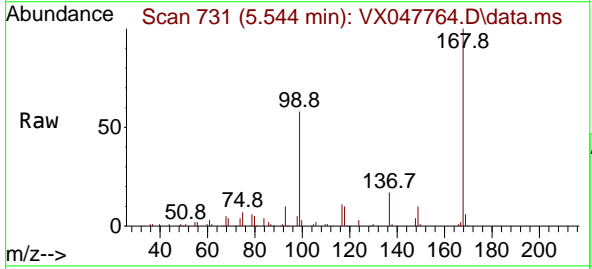
Instrument : MSVOA_X
 ClientSampleId : TT119S1-20250916

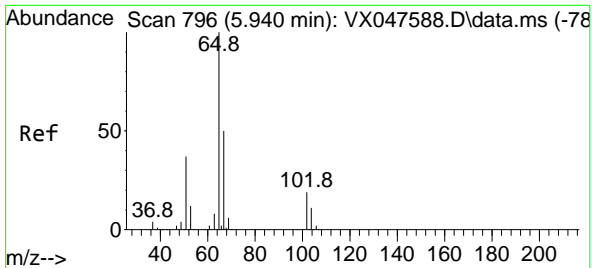
Tgt Ion: 43 Resp: 1390
 Ion Ratio Lower Upper
 43 100
 58 14.8 23.4 35.0#



#31
 Cyclohexane
 Concen: 0.996 ug/l
 RT: 5.544 min Scan# 731
 Delta R.T. 0.085 min
 Lab File: VX047764.D
 Acq: 24 Sep 2025 09:46

Tgt Ion: 56 Resp: 2765
 Ion Ratio Lower Upper
 56 100
 69 184.9 23.8 35.8#
 84 183.4 64.6 97.0#

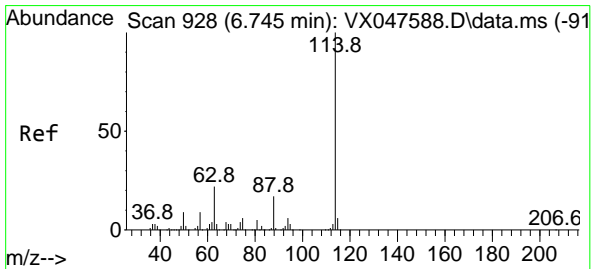
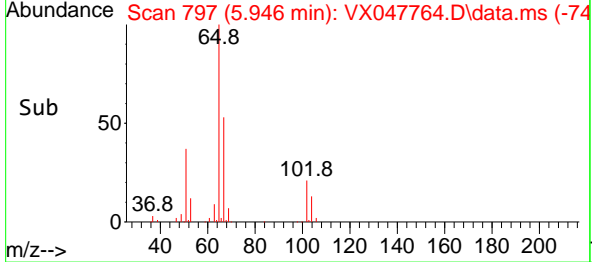
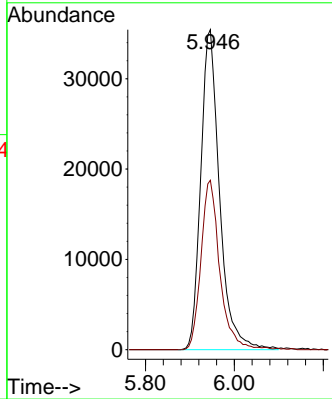
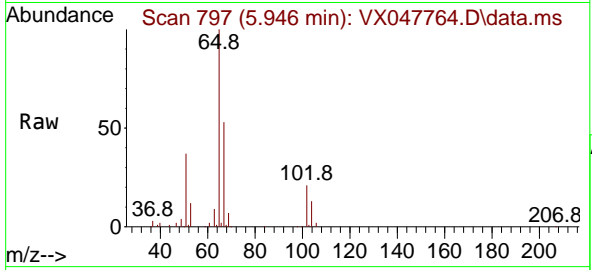




#33
 1,2-Dichloroethane-d4
 Concen: 49.653 ug/l
 RT: 5.946 min Scan# 796
 Delta R.T. 0.006 min
 Lab File: VX047764.D
 Acq: 24 Sep 2025 09:46

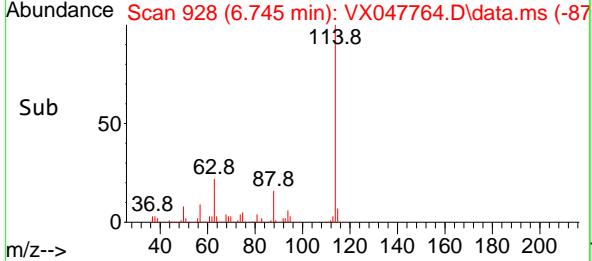
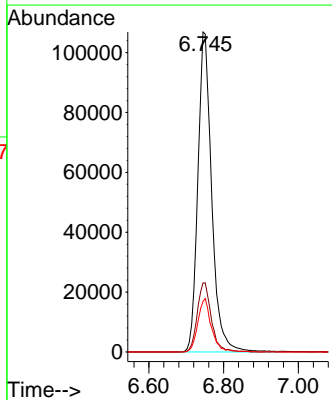
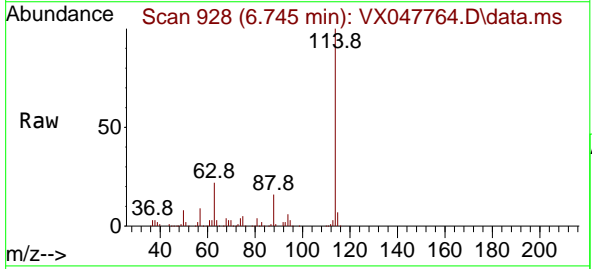
Instrument : MSVOA_X
 ClientSampleId : TT119S1-20250916

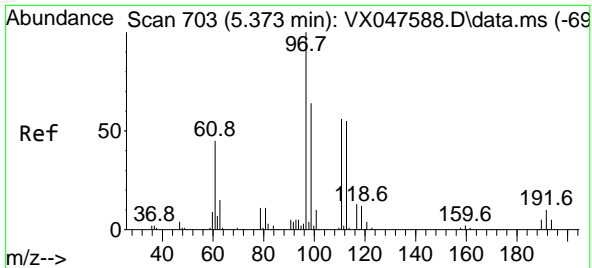
Tgt Ion: 65 Resp: 104294
 Ion Ratio Lower Upper
 65 100
 67 53.0 0.0 103.0



#34
 1,4-Difluorobenzene
 Concen: 50.000 ug/l
 RT: 6.745 min Scan# 928
 Delta R.T. -0.000 min
 Lab File: VX047764.D
 Acq: 24 Sep 2025 09:46

Tgt Ion: 114 Resp: 274545
 Ion Ratio Lower Upper
 114 100
 63 21.6 0.0 44.0
 88 15.8 0.0 34.2

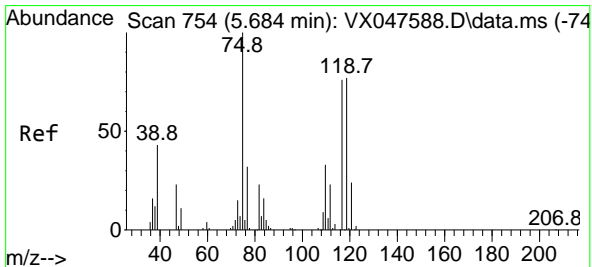
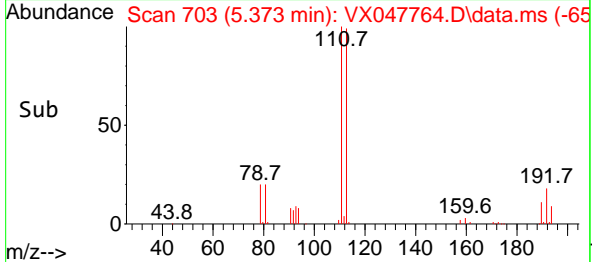
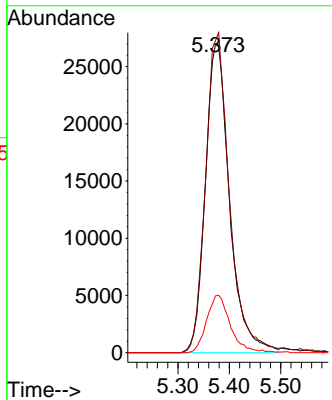
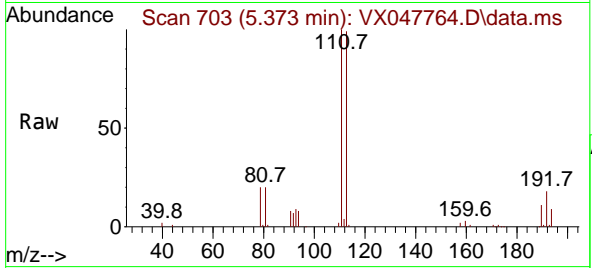




#35
 Dibromofluoromethane
 Concen: 47.962 ug/l
 RT: 5.373 min Scan# 70
 Delta R.T. -0.000 min
 Lab File: VX047764.D
 Acq: 24 Sep 2025 09:46

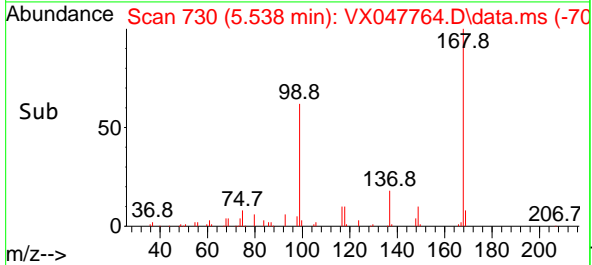
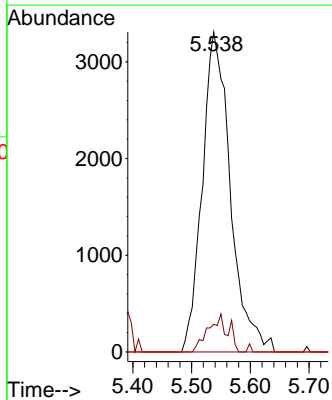
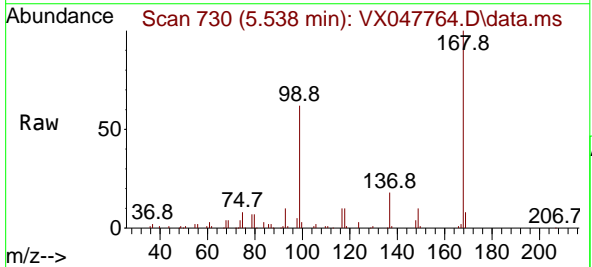
Instrument :
 MSVOA_X
 ClientSampleId :
 TT119S1-20250916

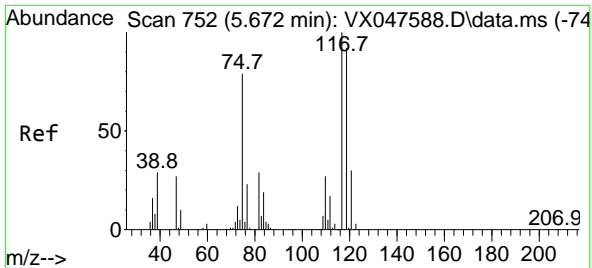
Tgt Ion	Resp	Lower	Upper
113	100		
111	102.9	80.9	121.3
192	18.2	14.2	21.4



#36
 1,1-Dichloropropene
 Concen: 4.088 ug/l
 RT: 5.538 min Scan# 730
 Delta R.T. -0.146 min
 Lab File: VX047764.D
 Acq: 24 Sep 2025 09:46

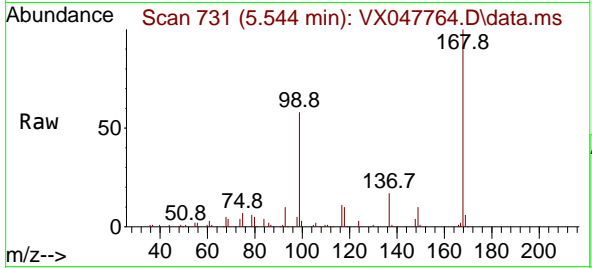
Tgt Ion	Resp	Lower	Upper
75	100		
110	8.3	16.7	50.1#
77	0.0	24.3	36.5#



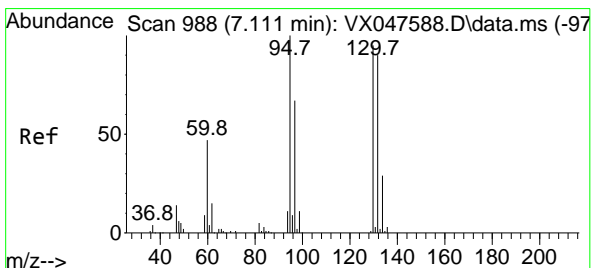
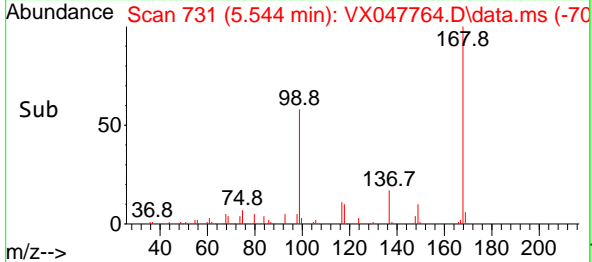
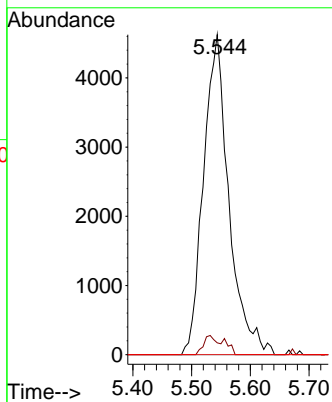


#38
 Carbon Tetrachloride
 Concen: 4.750 ug/l
 RT: 5.544 min Scan# 711
 Delta R.T. -0.128 min
 Lab File: VX047764.D
 Acq: 24 Sep 2025 09:46

Instrument : MSVOA_X
 ClientSampleId : TT119S1-20250916

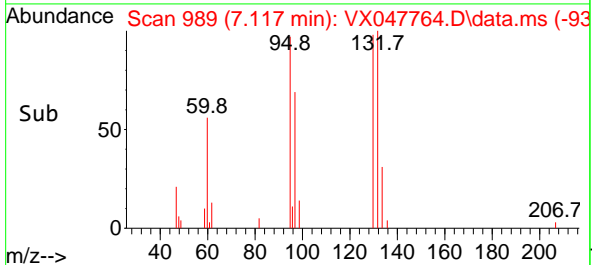
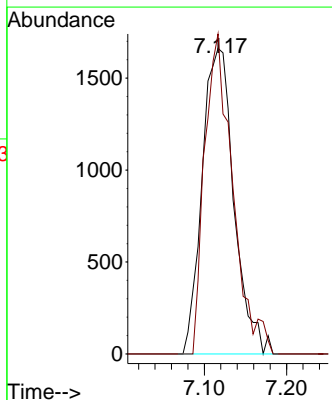
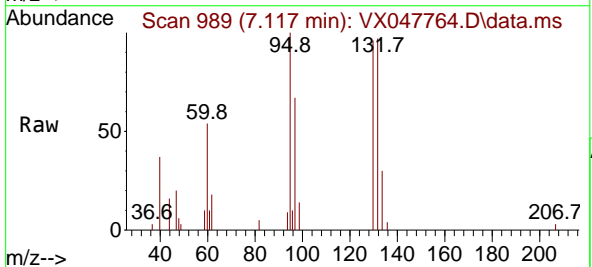


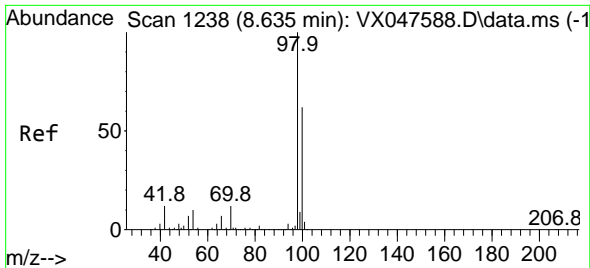
Tgt Ion:117 Resp: 13886
 Ion Ratio Lower Upper
 117 100
 119 3.7 73.4 110.2#
 121 0.0 23.8 35.6#



#44
 Trichloroethene
 Concen: 2.265 ug/l
 RT: 7.117 min Scan# 989
 Delta R.T. 0.006 min
 Lab File: VX047764.D
 Acq: 24 Sep 2025 09:46

Tgt Ion:130 Resp: 4474
 Ion Ratio Lower Upper
 130 100
 95 104.7 0.0 210.8

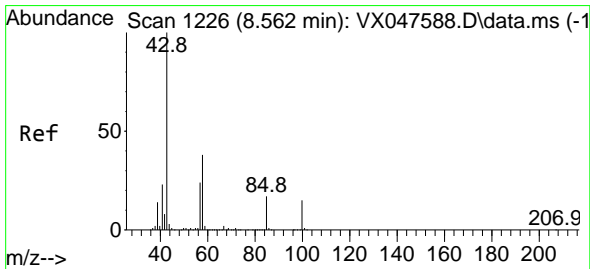
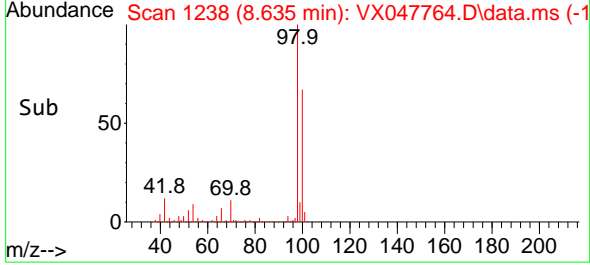
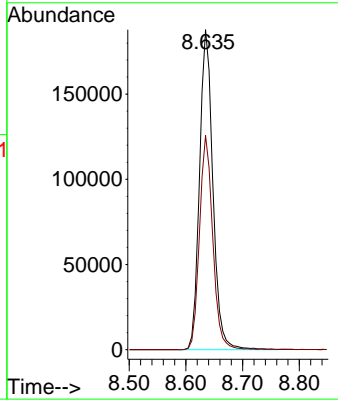
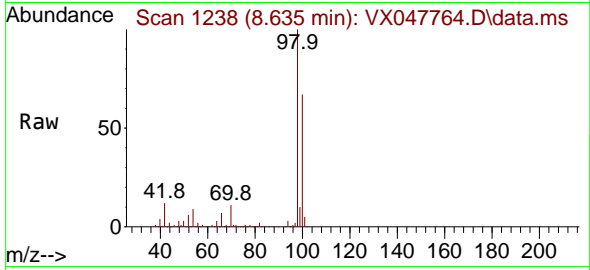




#50
 Toluene-d8
 Concen: 48.154 ug/l
 RT: 8.635 min Scan# 1238
 Delta R.T. -0.000 min
 Lab File: VX047764.D
 Acq: 24 Sep 2025 09:46

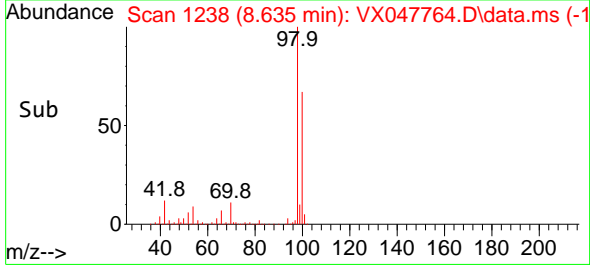
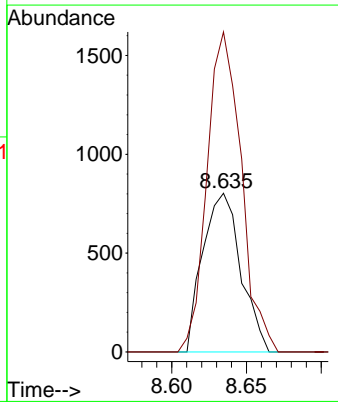
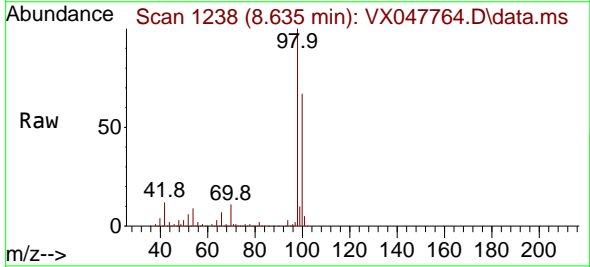
Instrument : MSVOA_X
 ClientSampleId : TT119S1-20250916

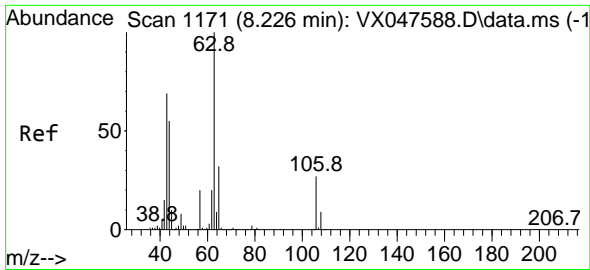
Tgt Ion: 98 Resp: 306792
 Ion Ratio Lower Upper
 98 100
 100 66.4 53.0 79.4



#51
 4-Methyl-2-Pentanone
 Concen: 0.543 ug/l
 RT: 8.635 min Scan# 1238
 Delta R.T. 0.073 min
 Lab File: VX047764.D
 Acq: 24 Sep 2025 09:46

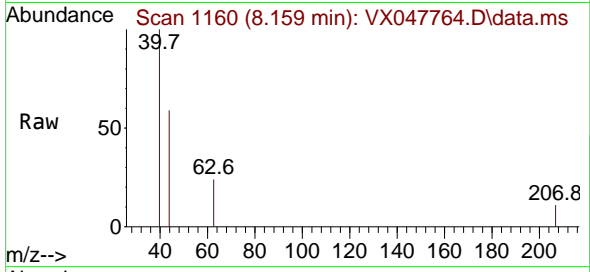
Tgt Ion: 43 Resp: 1422
 Ion Ratio Lower Upper
 43 100
 58 181.1 30.3 45.5#



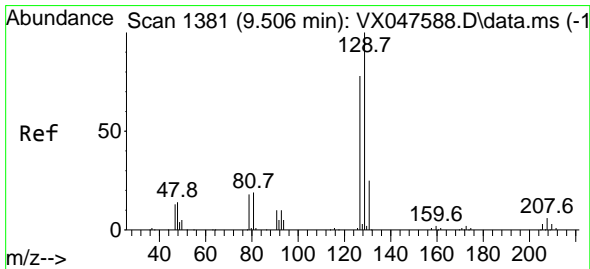
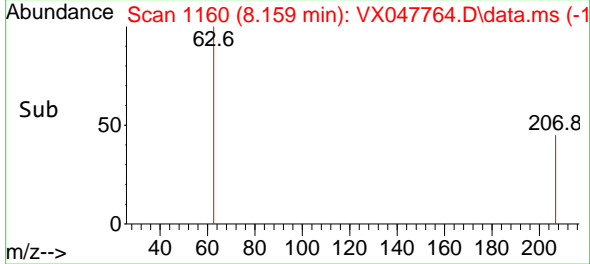
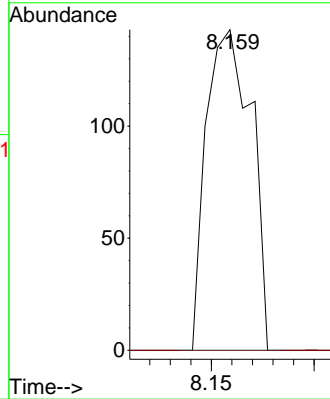


#58
 2-Chloroethyl Vinyl ether
 Concen: 8.043 ug/l
 RT: 8.159 min Scan# 1171
 Delta R.T. -0.067 min
 Lab File: VX047764.D
 Acq: 24 Sep 2025 09:46

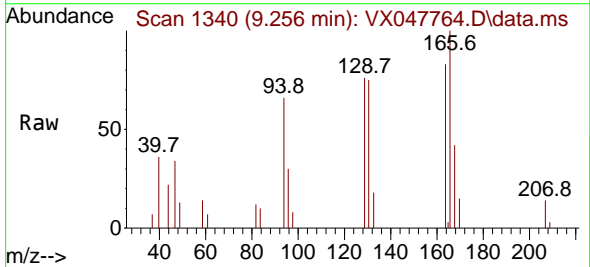
Instrument : MSVOA_X
 ClientSampleId : TT119S1-20250916



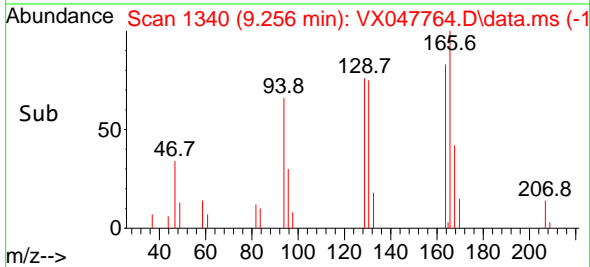
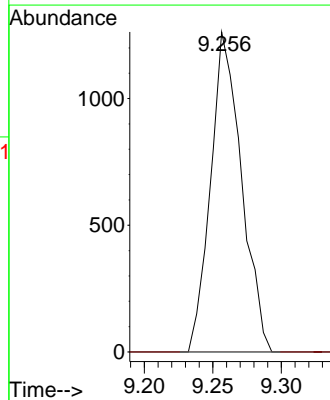
Tgt Ion: 63 Resp: 218
 Ion Ratio Lower Upper
 63 100
 106 0.0 21.9 32.9#

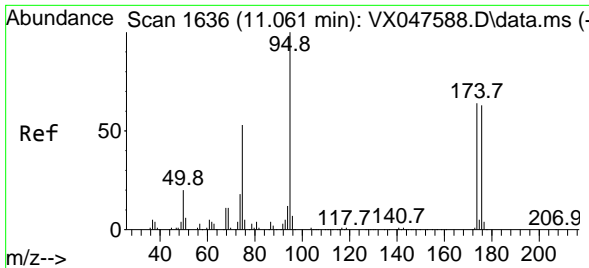


#60
 Dibromochloromethane
 Concen: 0.884 ug/l
 RT: 9.256 min Scan# 1340
 Delta R.T. -0.250 min
 Lab File: VX047764.D
 Acq: 24 Sep 2025 09:46



Tgt Ion: 129 Resp: 1977
 Ion Ratio Lower Upper
 129 100
 127 0.0 38.4 115.2#



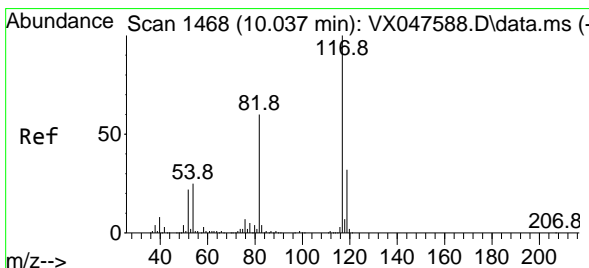
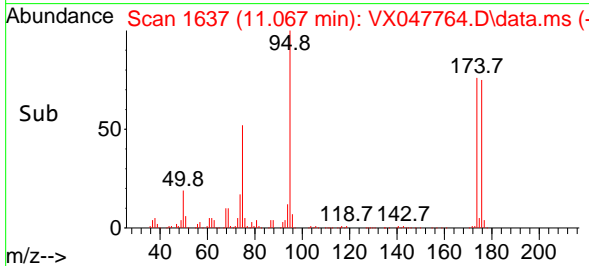
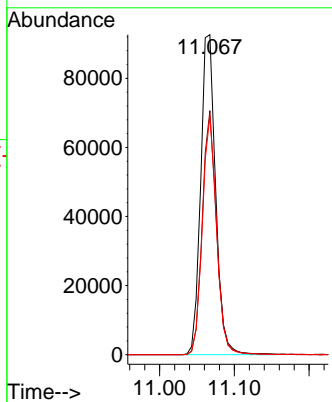
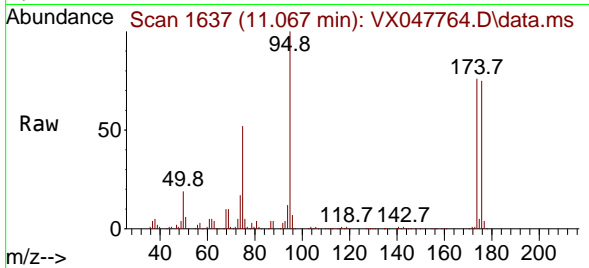


#62
 4-Bromofluorobenzene
 Concen: 53.239 ug/l
 RT: 11.067 min Scan# 11
 Delta R.T. 0.006 min
 Lab File: VX047764.D
 Acq: 24 Sep 2025 09:46

Instrument :
 MSVOA_X
 ClientSampleId :
 TT119S1-20250916

Tgt Ion: 95 Resp: 128728

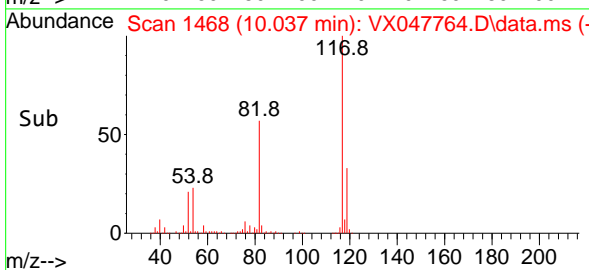
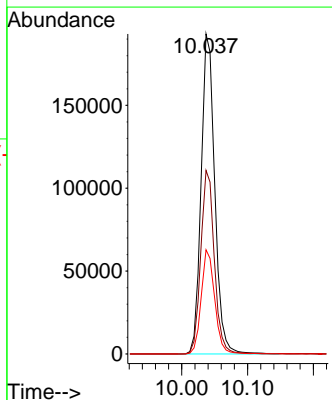
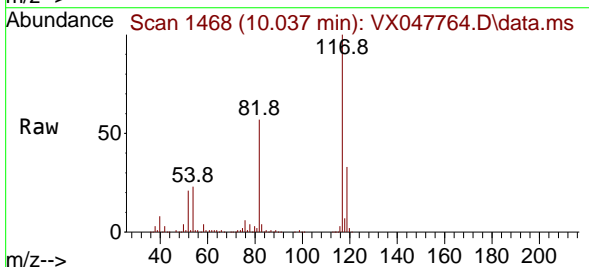
Ion	Ratio	Lower	Upper
95	100		
174	72.5	0.0	141.6
176	70.9	0.0	138.4

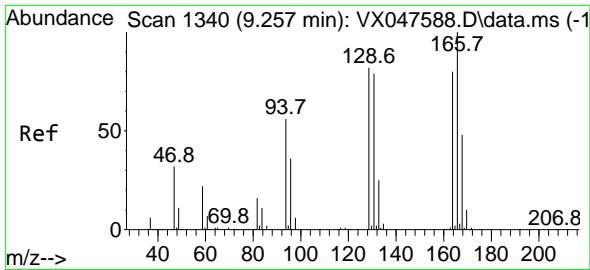


#63
 Chlorobenzene-d5
 Concen: 50.000 ug/l
 RT: 10.037 min Scan# 1468
 Delta R.T. -0.000 min
 Lab File: VX047764.D
 Acq: 24 Sep 2025 09:46

Tgt Ion: 117 Resp: 278664

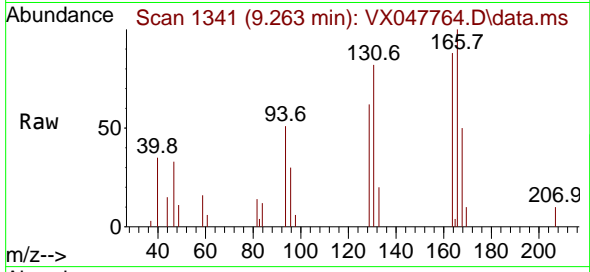
Ion	Ratio	Lower	Upper
117	100		
82	57.3	47.8	71.6
119	32.5	25.2	37.8



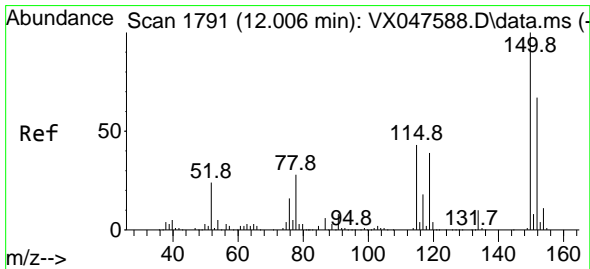
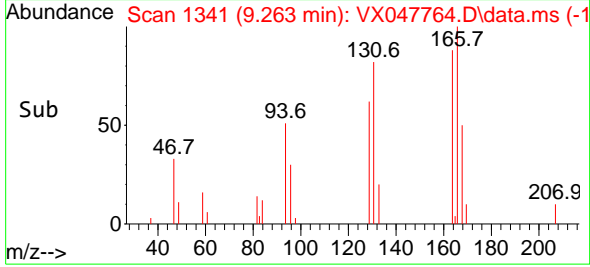
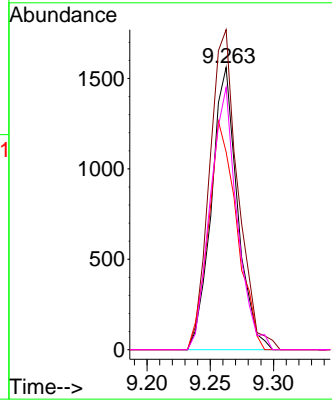


#64
 Tetrachloroethene
 Concen: 1.230 ug/l
 RT: 9.263 min Scan# 11
 Delta R.T. 0.006 min
 Lab File: VX047764.D
 Acq: 24 Sep 2025 09:46

Instrument :
 MSVOA_X
 ClientSampleId :
 TT119S1-20250916

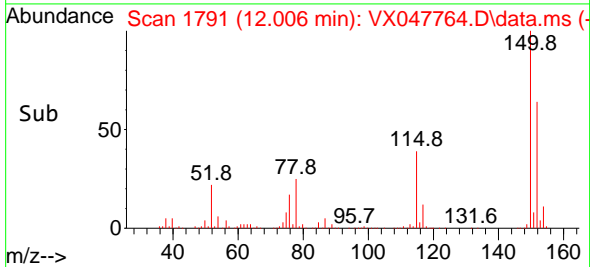
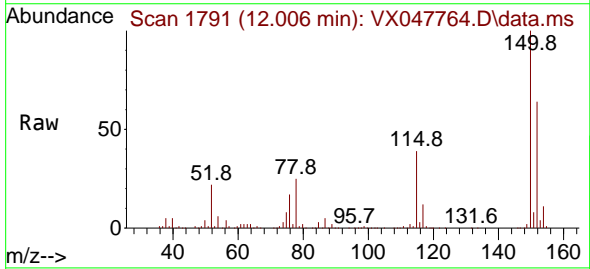
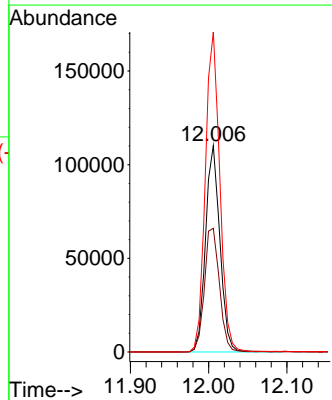


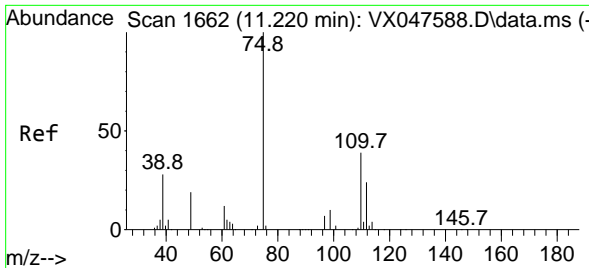
Tgt Ion:164 Resp: 2234
 Ion Ratio Lower Upper
 164 100
 166 113.4 100.2 150.2
 129 70.1 81.8 122.6#
 131 93.0 78.6 118.0



#72
 1,4-Dichlorobenzene-d4
 Concen: 50.000 ug/l
 RT: 12.006 min Scan# 1791
 Delta R.T. -0.000 min
 Lab File: VX047764.D
 Acq: 24 Sep 2025 09:46

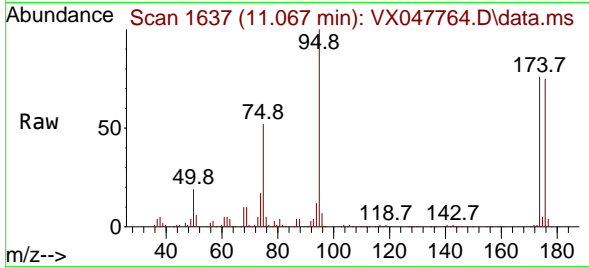
Tgt Ion:152 Resp: 140271
 Ion Ratio Lower Upper
 152 100
 115 62.7 44.9 134.5
 150 156.1 0.0 352.0



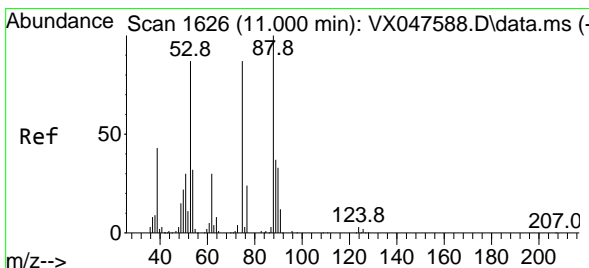
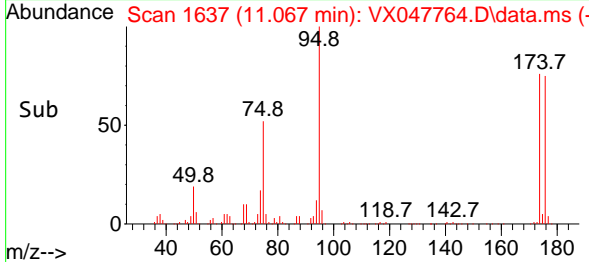
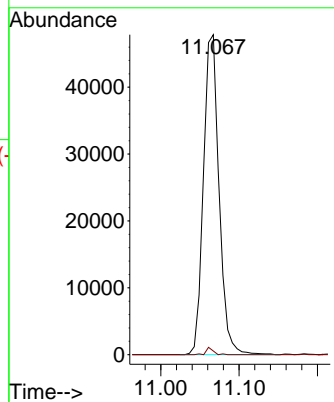


#76
 1,2,3-Trichloropropane
 Concen: 23.267 ug/l
 RT: 11.067 min Scan# 1637
 Delta R.T. -0.152 min
 Lab File: VX047764.D
 Acq: 24 Sep 2025 09:46

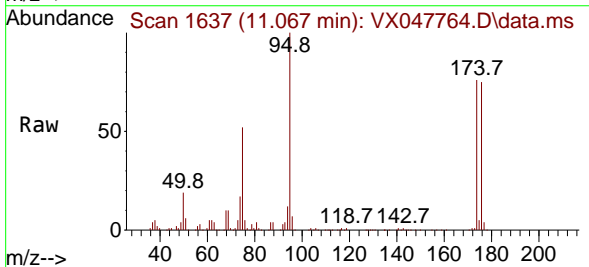
Instrument : MSVOA_X
 ClientSampleId : TT119S1-20250916



Tgt Ion: 75 Resp: 66080
 Ion Ratio Lower Upper
 75 100
 77 1.0 18.8 56.4#



#81
 trans-1,4-Dichloro-2-butene
 Concen: 59.335 ug/l
 RT: 11.067 min Scan# 1637
 Delta R.T. 0.067 min
 Lab File: VX047764.D
 Acq: 24 Sep 2025 09:46



Tgt Ion: 75 Resp: 66080
 Ion Ratio Lower Upper
 75 100
 53 0.0 83.4 125.2#
 89 0.0 36.3 54.5#

