

Data Path : Z:\VOASRV\HPCHEM1\MSVOA_X\DATA\VX092419\
 Data File : VX012644.D
 Acq On : 24 Sep 2019 19:38
 Operator : JC/SP
 Sample : K5008-01ME 10X
 Misc : 4.71g/5mL/100uL/10mL/MSVOA_X/MEOH
 ALS Vial : 26 Sample Multiplier: 1

Instrument :
 MSVOA_X
 ClientSampled :
 SB-1ME

Quant Time: Sep 25 04:39:42 2019
 Quant Method : Z:\VOASRV\HPCHEM1\MSVOA_X\METHOD\82X092319W.M
 Quant Title : SW846 8260
 QLast Update : Mon Sep 23 12:27:01 2019
 Response via : Initial Calibration

Internal Standards	R.T.	QIon	Response	Conc	Units	Dev(Min)
1) Pentafluorobenzene	5.65	168	160338	50.00	ug/l	0.00
34) 1,4-Difluorobenzene	6.85	114	281477	50.00	ug/l	0.00
63) Chlorobenzene-d5	10.11	117	245470	50.00	ug/l	0.00
72) 1,4-Dichlorobenzene-d4	12.07	152	106021	50.00	ug/l	0.00

System Monitoring Compounds

33) 1,2-Dichloroethane-d4	6.05	65	116362	49.84	ug/l	0.00
Spiked Amount				50.000		
			Recovery	=	99.68%	
35) Dibromofluoromethane	5.48	113	83856	50.02	ug/l	0.00
Spiked Amount				50.000		
			Recovery	=	100.04%	
50) Toluene-d8	8.71	98	333189	51.61	ug/l	0.00
Spiked Amount				50.000		
			Recovery	=	103.22%	
62) 4-Bromofluorobenzene	11.14	95	124039	48.87	ug/l	0.00
Spiked Amount				50.000		
			Recovery	=	97.74%	

Target Compounds

						Qvalue
5) Bromomethane	1.62	94	239	0.295	ug/l #	61
6) Chloroethane	1.74	64	431	0.311	ug/l #	45
10) Methyl Iodide	2.50	142	38	4.971	ug/l #	35
11) Tert butyl alcohol	3.01	59	16132	27.659	ug/l #	73
13) Acrolein	2.28	56	65	10.425	ug/l #	15
15) Acrylonitrile	3.01	53	295	0.249	ug/l #	22
16) Acetone	2.44	43	806	0.652	ug/l	95
20) Methylene Chloride	2.84	84	520	0.249	ug/l #	71
25) 2-Butanone	4.69	43	501	0.283	ug/l #	51
31) Cyclohexane	5.58	56	836	0.257	ug/l #	55
36) 1,1-Dichloropropene	5.65	75	14273	5.261	ug/l #	52
38) Carbon Tetrachloride	5.64	117	17734	6.435	ug/l #	17
39) Methylcyclohexane	7.46	83	5749	1.760	ug/l	92
51) 4-Methyl-2-Pentanone	8.67	43	950	0.290	ug/l #	38
55) 1,1,2-Trichloroethane	9.16	97	3238	1.623	ug/l #	20
56) Ethyl methacrylate	9.17	69	847	0.253	ug/l #	1
59) 2-Hexanone	9.44	43	5995	2.392	ug/l #	30
67) Ethyl Benzene	10.25	91	12029	1.283	ug/l	96
68) m/p-Xylenes	10.36	106	3750	1.068	ug/l	88
73) Isopropylbenzene	11.01	105	7330	0.849	ug/l	90
74) N-amyl acetate	10.90	43	6560	1.592	ug/l #	1
75) 1,1,2,2-Tetrachloroethane	11.28	83	4834	1.690	ug/l #	26
76) 1,2,3-Trichloropropane	11.14	75	63411	22.610	ug/l #	38
78) n-propylbenzene	11.35	91	19110	1.966	ug/l	97
79) 2-Chlorotoluene	11.67	91	1287	0.212	ug/l	83
80) 1,3,5-Trimethylbenzene	11.45	105	22805	3.149	ug/l	71
81) trans-1,4-Dichloro-2-buten	11.14	75	63411	64.796	ug/l #	9
83) tert-Butylbenzene	11.81	119	13515	1.935	ug/l #	62
84) 1,2,4-Trimethylbenzene	11.80	105	105397	14.428	ug/l	99
85) sec-Butylbenzene	11.94	105	15161	1.866	ug/l	89
86) p-Isopropyltoluene	12.06	119	11544	1.575	ug/l	95
89) n-Butylbenzene	12.39	91	20318	3.145	ug/l #	76
90) Hexachloroethane	12.58	117	3648	2.791	ug/l #	17
92) 1,2-Dibromo-3-Chloropropan	12.97	75	378	0.528	ug/l #	4

Data Path : Z:\VOASRV\HPCHEM1\MSVOA_X\DATA\VX092419\
 Data File : VX012644.D
 Acq On : 24 Sep 2019 19:38
 Operator : JC/SP
 Sample : K5008-01ME 10X
 Misc : 4.71g/5mL/100uL/10mL/MSVOA_X/MEOH
 ALS Vial : 26 Sample Multiplier: 1

Instrument :
 MSVOA_X
ClientSampleId :
 SB-1ME

Quant Time: Sep 25 04:39:42 2019
 Quant Method : Z:\VOASRV\HPCHEM1\MSVOA_X\METHOD\82X092319W.M
 Quant Title : SW846 8260
 QLast Update : Mon Sep 23 12:27:01 2019
 Response via : Initial Calibration

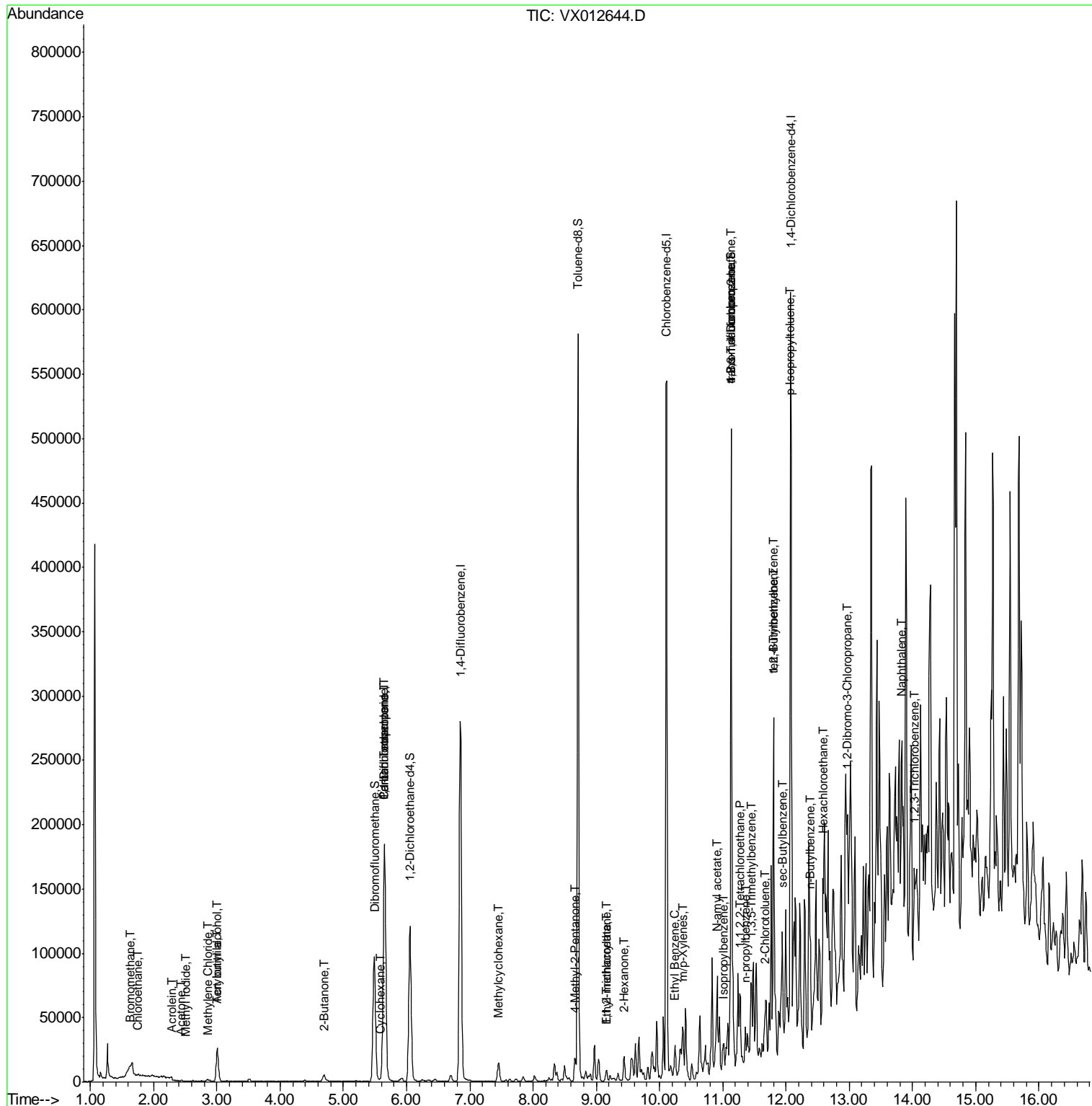
Internal Standards	R.T.	QIon	Response	Conc	Units	Dev(Min)
95) Naphthalene	13.83	128	94878	12.212	ug/l #	96
96) 1,2,3-Trichlorobenzene	14.03	180	729	0.339	ug/l #	1

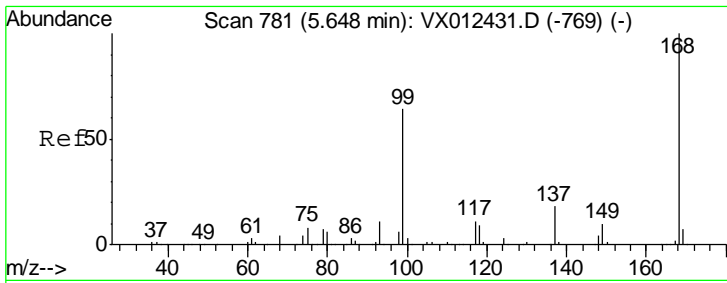
(#) = qualifier out of range (m) = manual integration (+) = signals summed

Data Path : Z:\VOASRV\HPCHEM1\MSVOA_X\DATA\VX092419\
 Data File : VX012644.D
 Acq On : 24 Sep 2019 19:38
 Operator : JC/SP
 Sample : K5008-01ME 10X
 Misc : 4.71g/5mL/100uL/10mL/MSVOA_X/MEOH
 ALS Vial : 26 Sample Multiplier: 1

Instrument :
 MSVOA_X
 Client Sampled :
 SB-1ME

Quant Time: Sep 25 04:39:42 2019
 Quant Method : Z:\VOASRV\HPCHEM1\MSVOA_X\METHOD\82X092319W.M
 Quant Title : SW846 8260
 QLast Update : Mon Sep 23 12:27:01 2019
 Response via : Initial Calibration

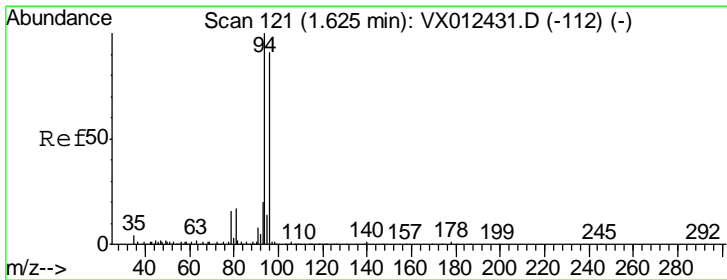
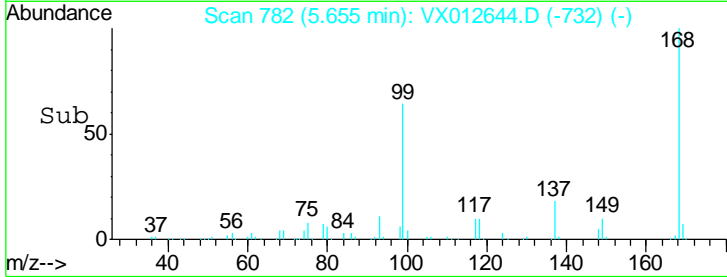
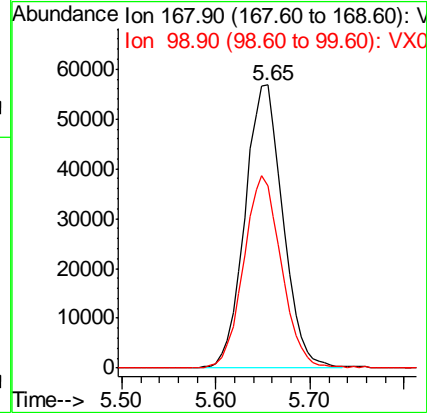
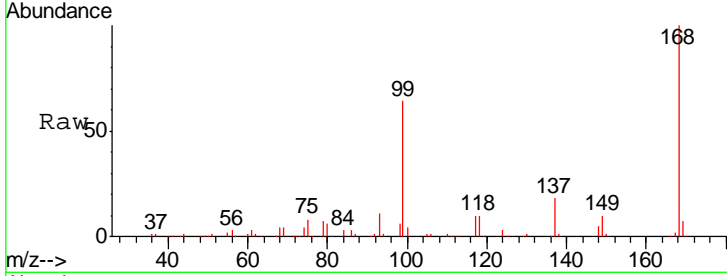




#1
 Pentafluorobenzene
 Concen: 50.000 ug/l
 RT: 5.65 min Scan# 782
 Delta R.T. 0.01 min
 Lab File: VX012644.D
 Acq: 24 Sep 2019 19:38

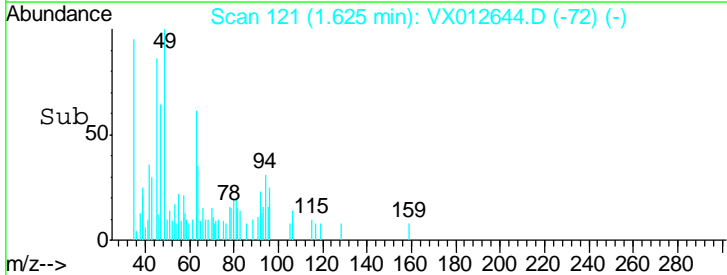
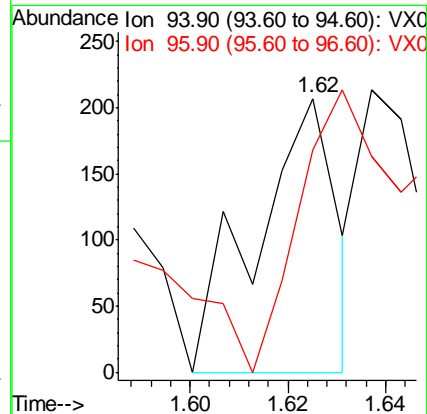
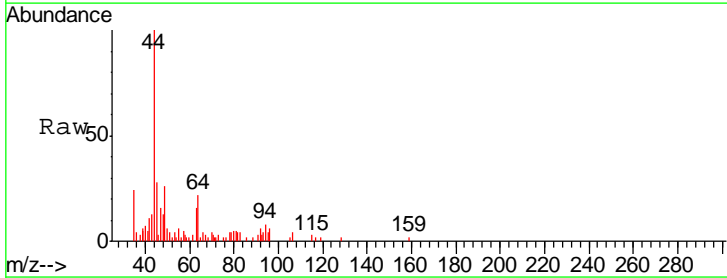
Instrument :
 MSVOA_X
 ClientSampled :
 SB-1ME

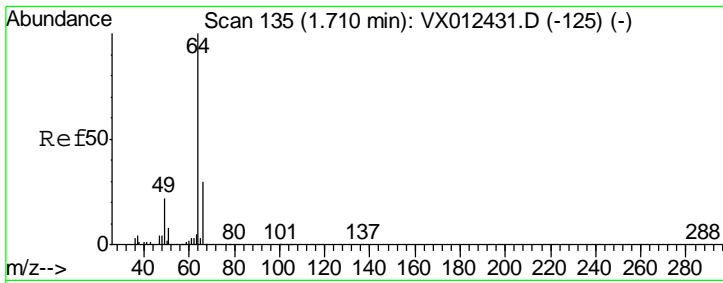
Tgt Ion: 168 Resp: 160338
 Ion Ratio Lower Upper
 168 100
 99 64.0 51.4 77.2



#5
 Bromomethane
 Concen: 0.295 ug/l
 RT: 1.62 min Scan# 121
 Delta R.T. 0.00 min
 Lab File: VX012644.D
 Acq: 24 Sep 2019 19:38

Tgt Ion: 94 Resp: 239
 Ion Ratio Lower Upper
 94 100
 96 54.1 72.8 109.2#

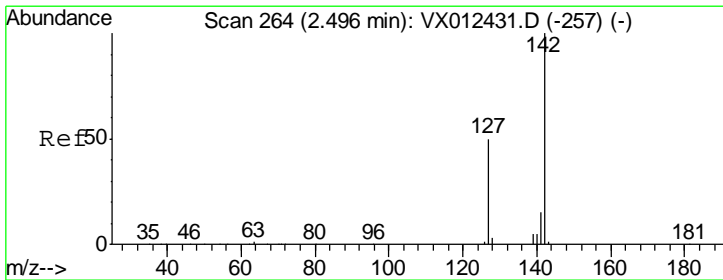
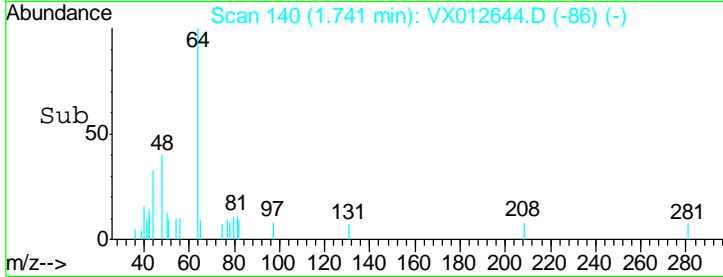
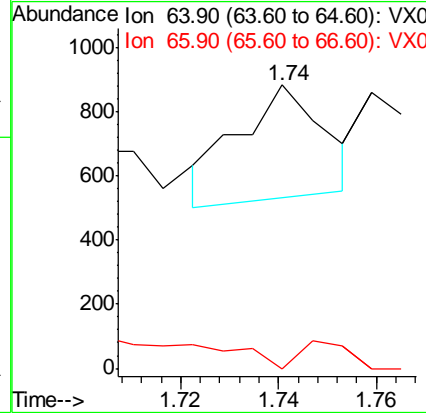
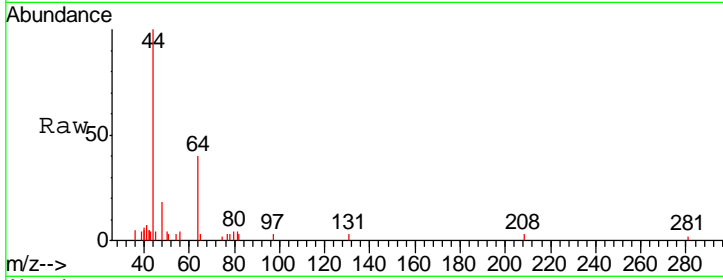




#6
 Chloroethane
 Concen: 0.311 ug/l
 RT: 1.74 min Scan# 140
 Delta R.T. 0.03 min
 Lab File: VX012644.D
 Acq: 24 Sep 2019 19:38

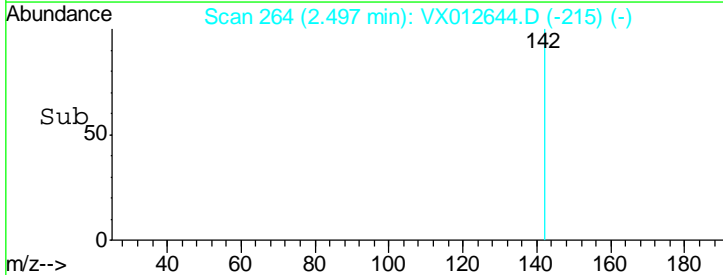
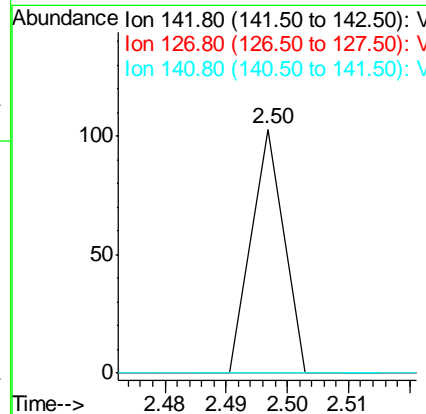
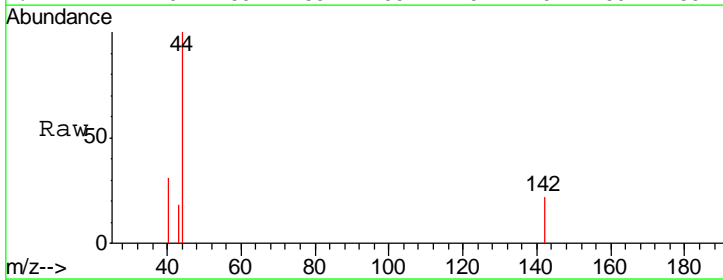
Instrument :
 MSVOA_X
 ClientSampled :
 SB-1ME

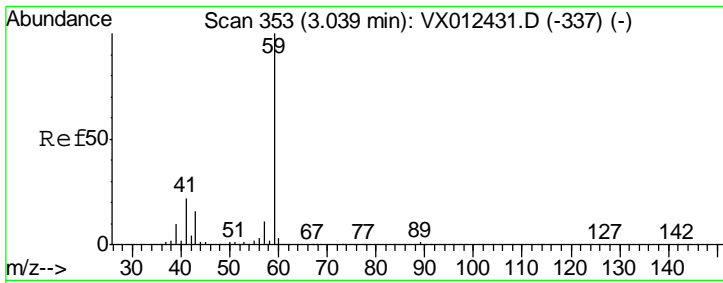
Tgt Ion: 64 Resp: 431
 Ion Ratio Lower Upper
 64 100
 66 0.0 24.0 36.0#



#10
 Methyl Iodide
 Concen: 4.971 ug/l
 RT: 2.50 min Scan# 264
 Delta R.T. 0.00 min
 Lab File: VX012644.D
 Acq: 24 Sep 2019 19:38

Tgt Ion: 142 Resp: 38
 Ion Ratio Lower Upper
 142 100
 127 0.0 40.8 61.2#
 141 0.0 12.1 18.1#

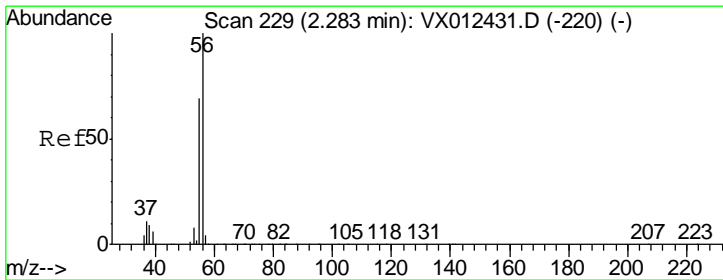
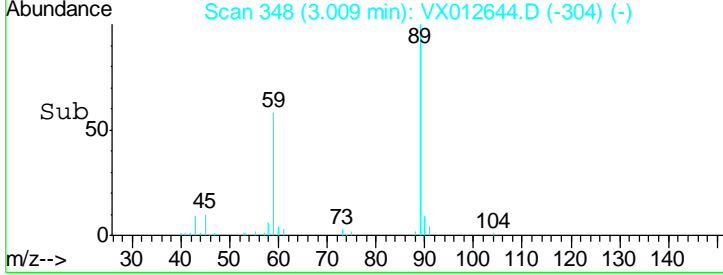
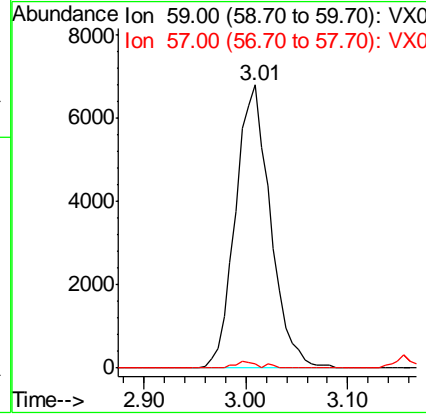
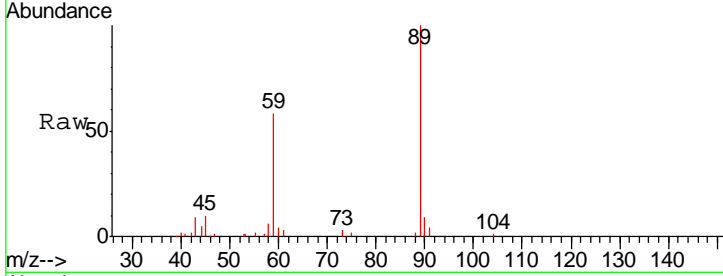




#11
 Tert butyl alcohol
 Concen: 27.659 ug/l
 RT: 3.01 min Scan# 348
 Delta R.T. -0.03 min
 Lab File: VX012644.D
 Acq: 24 Sep 2019 19:38

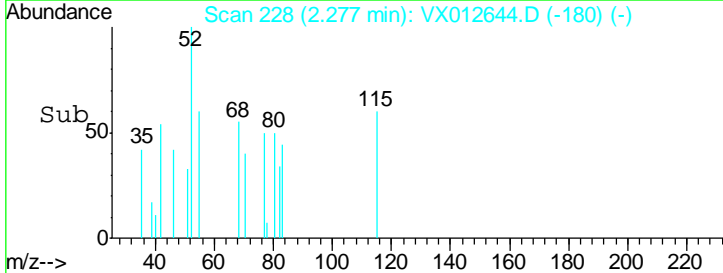
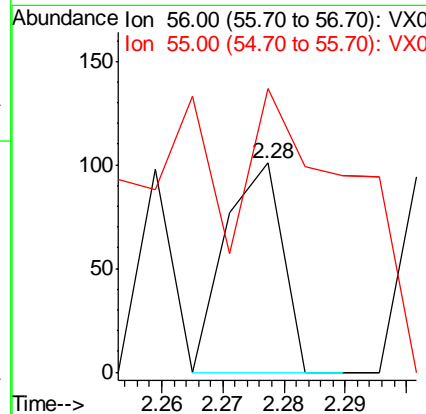
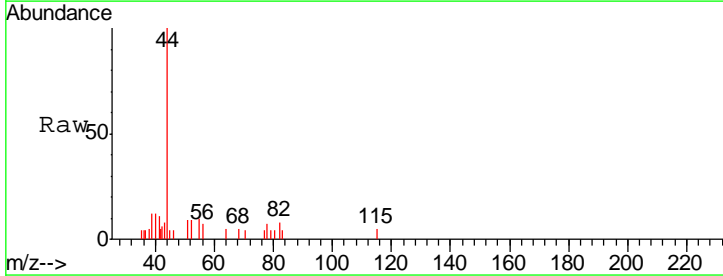
Instrument : MSVOA_X
 ClientSampled : SB-1ME

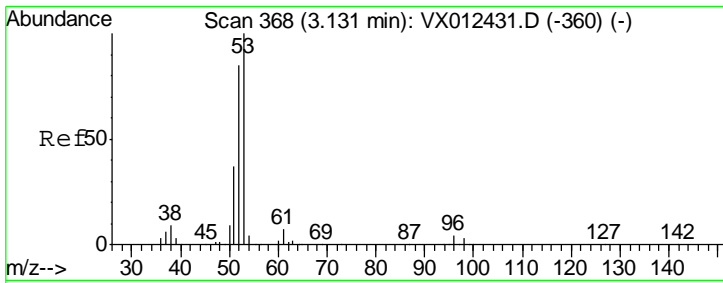
Tgt Ion	Resp	Lower	Upper
59	16132		
57	0.4	8.3	12.5#



#13
 Acrolein
 Concen: 10.425 ug/l
 RT: 2.28 min Scan# 228
 Delta R.T. -0.01 min
 Lab File: VX012644.D
 Acq: 24 Sep 2019 19:38

Tgt Ion	Resp	Lower	Upper
56	65		
55	0.0	55.8	83.8#

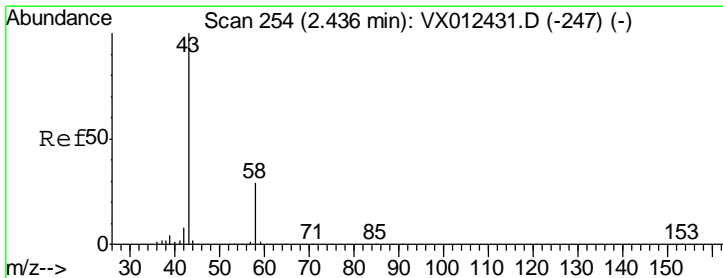
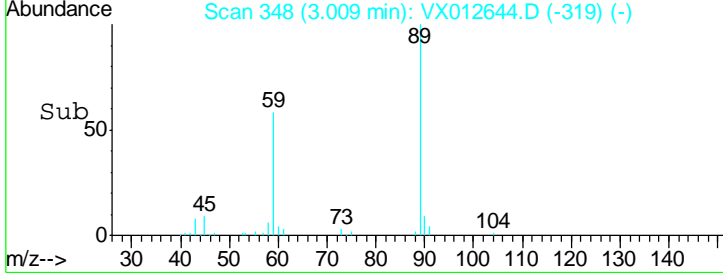
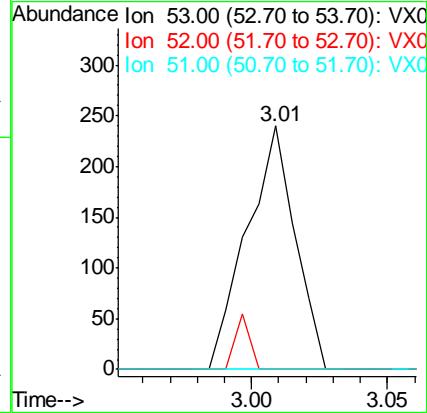
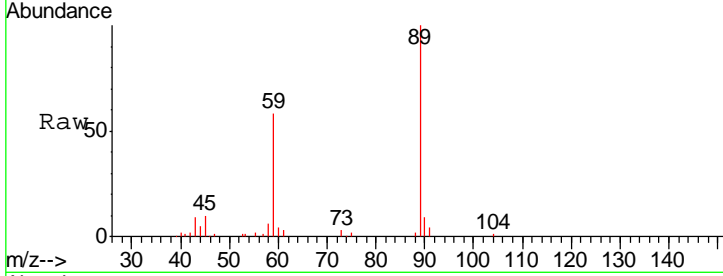




#15
 Acrylonitrile
 Concen: 0.249 ug/l
 RT: 3.01 min Scan# 348
 Delta R.T. -0.12 min
 Lab File: VX012644.D
 Acq: 24 Sep 2019 19:38

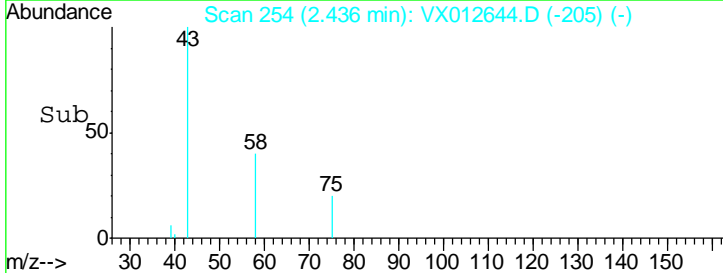
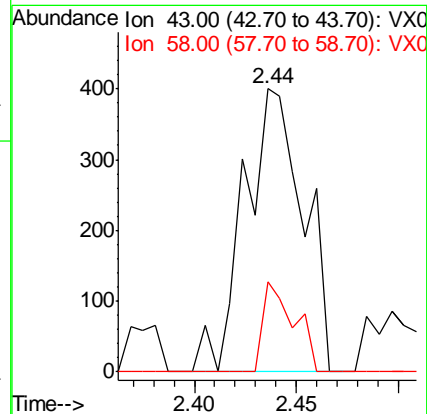
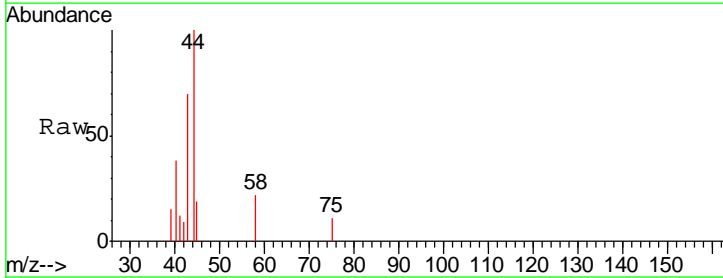
Instrument :
 MSVOA_X
 ClientSampled :
 SB-1ME

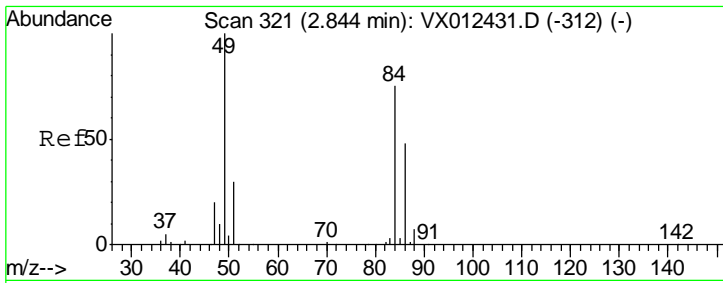
Tgt Ion	Resp	Lower	Upper
53	100		
52	6.8	67.0	100.4#
51	0.0	29.6	44.4#



#16
 Acetone
 Concen: 0.652 ug/l
 RT: 2.44 min Scan# 254
 Delta R.T. 0.00 min
 Lab File: VX012644.D
 Acq: 24 Sep 2019 19:38

Tgt Ion	Resp	Lower	Upper
43	100		
58	32.0	23.3	34.9

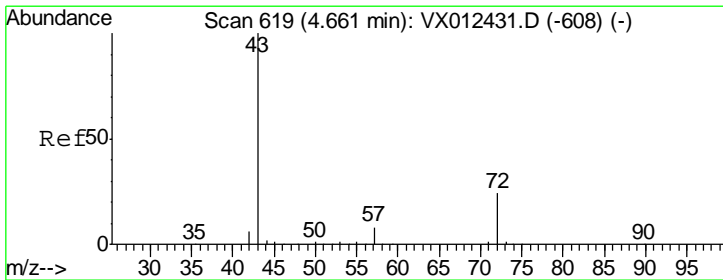
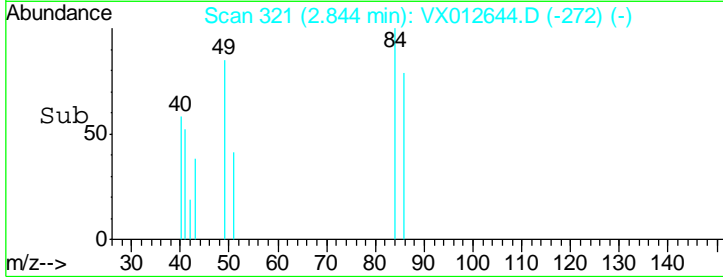
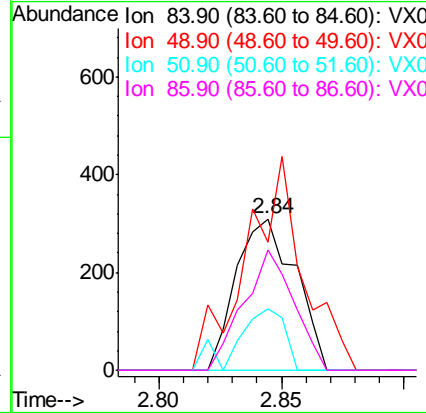
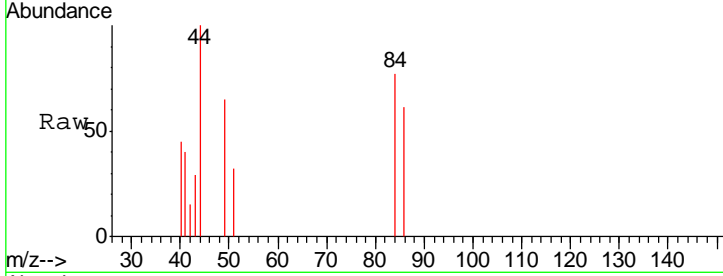




#20
 Methylene Chloride
 Concen: 0.249 ug/l
 RT: 2.84 min Scan# 321
 Delta R.T. 0.00 min
 Lab File: VX012644.D
 Acq: 24 Sep 2019 19:38

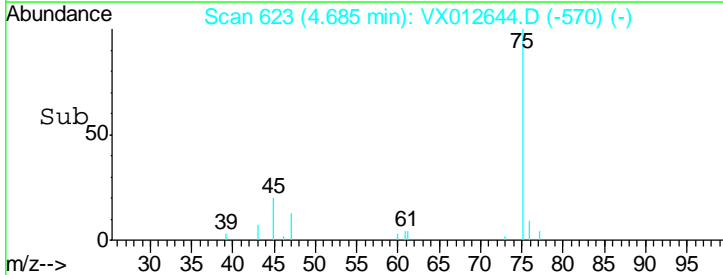
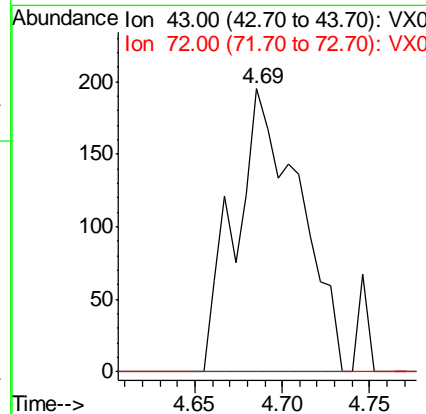
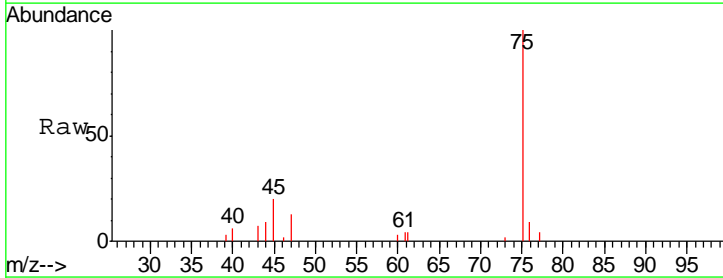
Instrument :
 MSVOA_X
 ClientSampled :
 SB-1ME

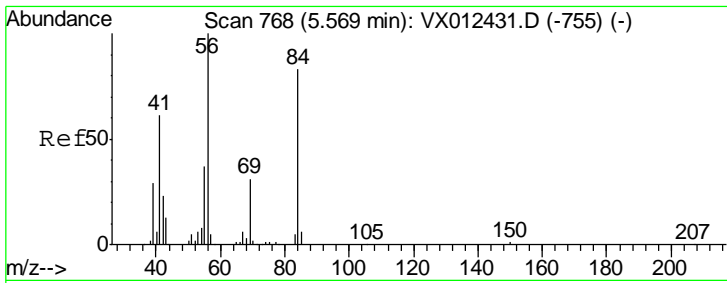
Tgt Ion	Resp	Lower	Upper
84	100		
49	84.8	106.8	160.2#
51	41.1	32.3	48.5
86	79.3	51.3	76.9#



#25
 2-Butanone
 Concen: 0.283 ug/l
 RT: 4.69 min Scan# 623
 Delta R.T. 0.02 min
 Lab File: VX012644.D
 Acq: 24 Sep 2019 19:38

Tgt Ion	Resp	Lower	Upper
43	100		
72	0.0	19.2	28.8#

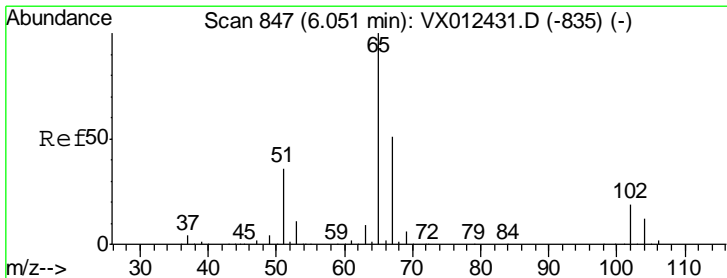
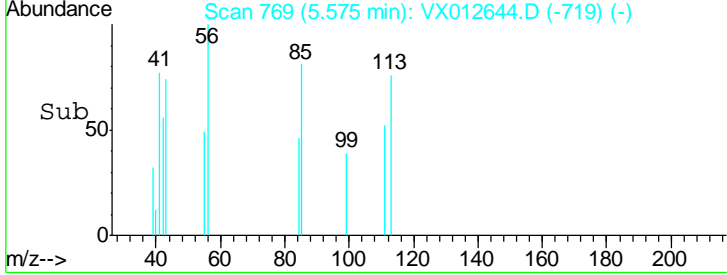
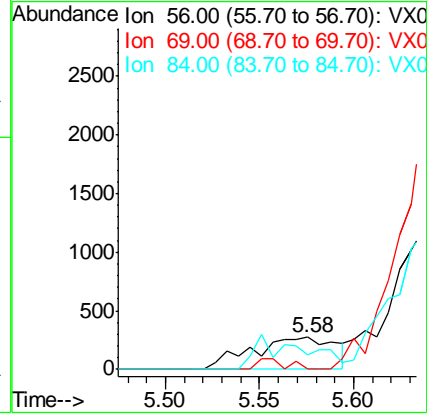
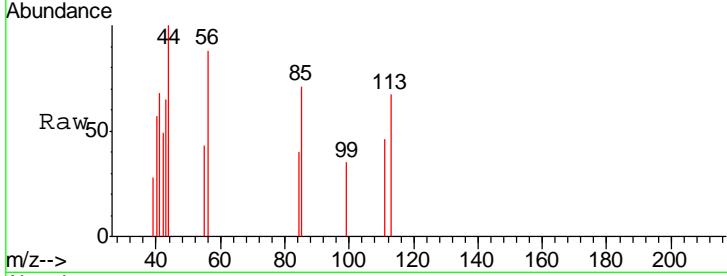




#31
 Cyclohexane
 Concen: 0.257 ug/l
 RT: 5.58 min Scan# 769
 Delta R.T. 0.01 min
 Lab File: VX012644.D
 Acq: 24 Sep 2019 19:38

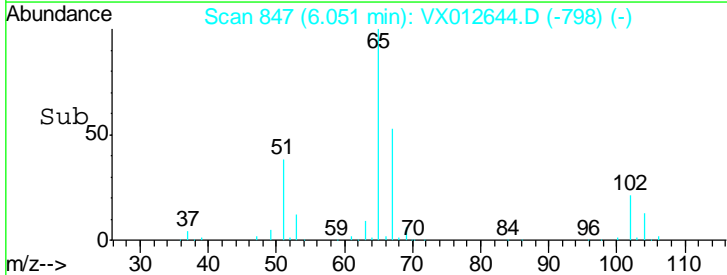
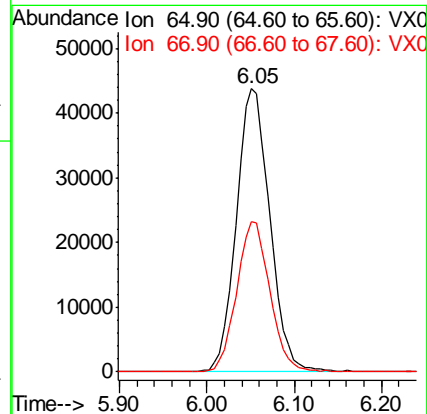
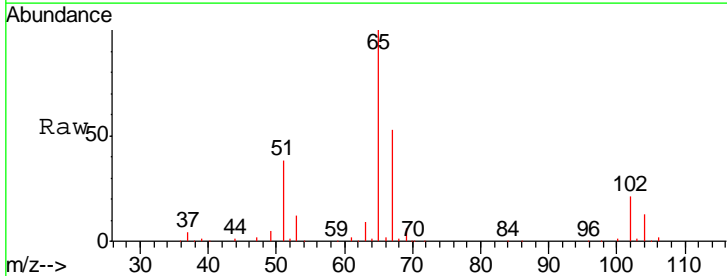
Instrument :
 MSVOA_X
 ClientSampled :
 SB-1ME

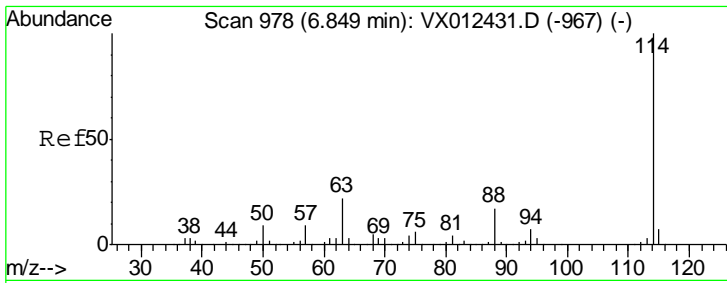
Tgt Ion	Resp	Lower	Upper
56	100		
69	0.0	25.0	37.6#
84	46.0	66.4	99.6#



#33
 1,2-Dichloroethane-d4
 Concen: 49.837 ug/l
 RT: 6.05 min Scan# 847
 Delta R.T. 0.00 min
 Lab File: VX012644.D
 Acq: 24 Sep 2019 19:38

Tgt Ion	Resp	Lower	Upper
65	100		
67	52.5	0.0	101.2

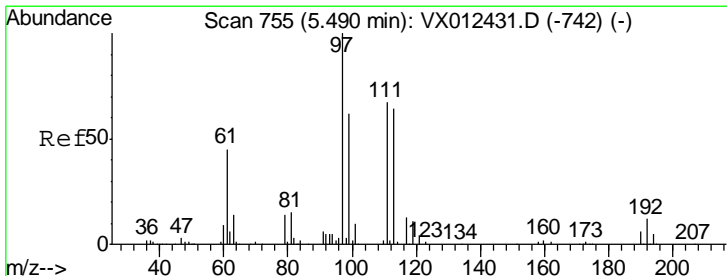
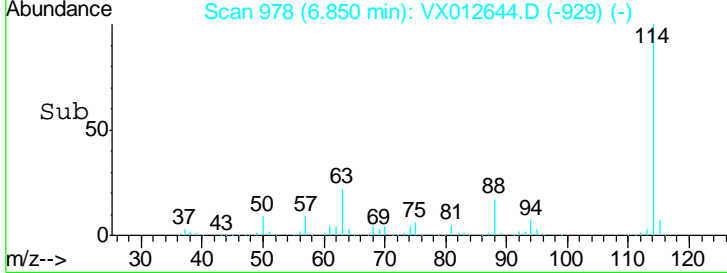
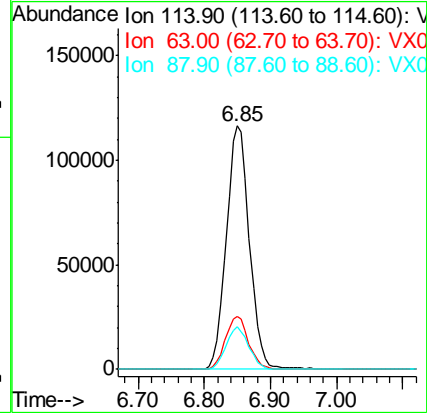
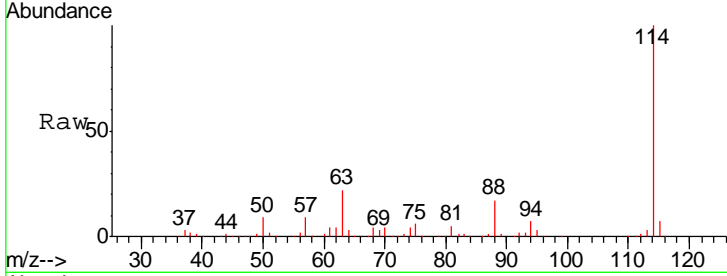




#34
 1,4-Difluorobenzene
 Concen: 50.000 ug/l
 RT: 6.85 min Scan# 978
 Delta R.T. 0.00 min
 Lab File: VX012644.D
 Acq: 24 Sep 2019 19:38

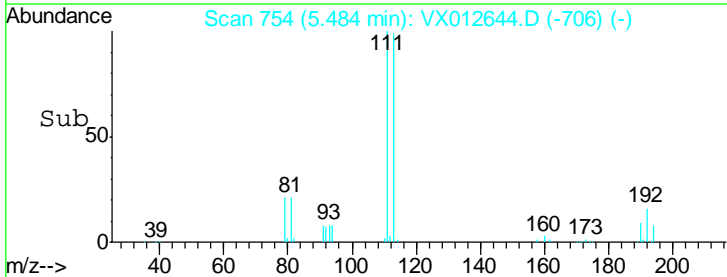
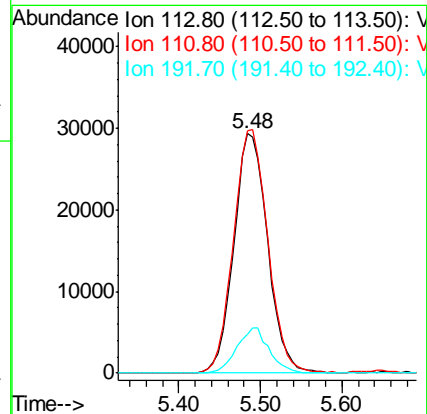
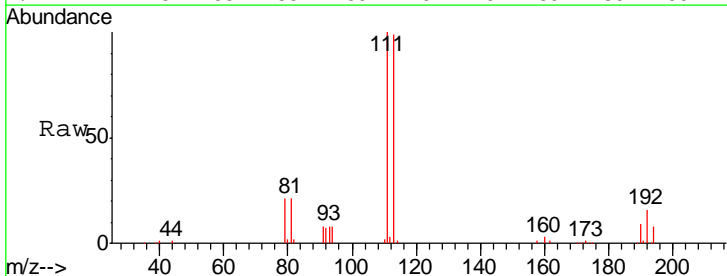
Instrument :
 MSVOA_X
 ClientSampled :
 SB-1ME

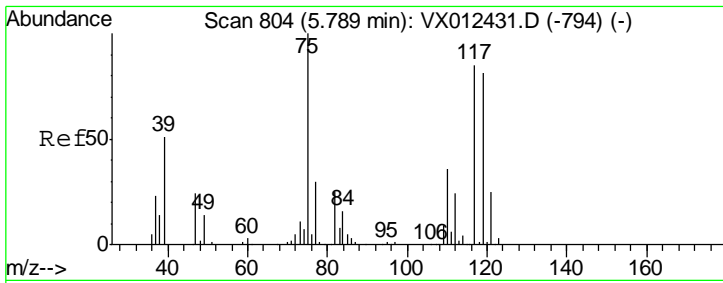
Tgt Ion	Resp	Lower	Upper
114	281477		
63	21.9	0.0	43.2
88	17.5	0.0	33.2



#35
 Dibromofluoromethane
 Concen: 50.024 ug/l
 RT: 5.48 min Scan# 754
 Delta R.T. -0.01 min
 Lab File: VX012644.D
 Acq: 24 Sep 2019 19:38

Tgt Ion	Resp	Lower	Upper
113	83856		
111	103.2	83.4	125.2
192	18.1	14.4	21.6

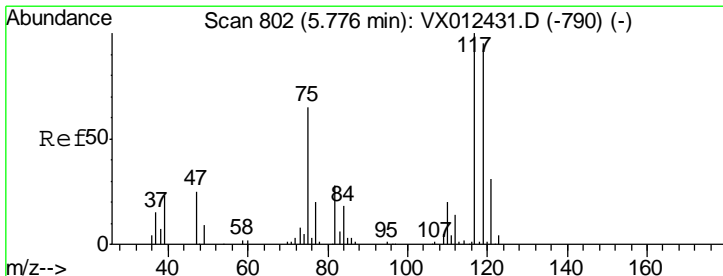
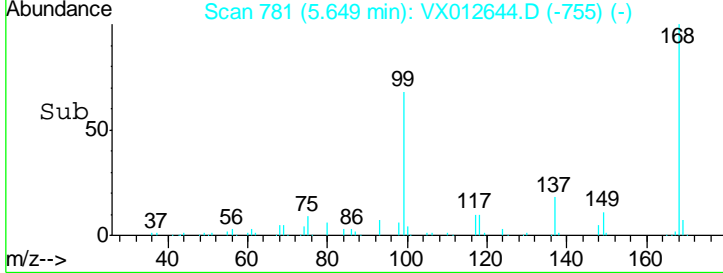
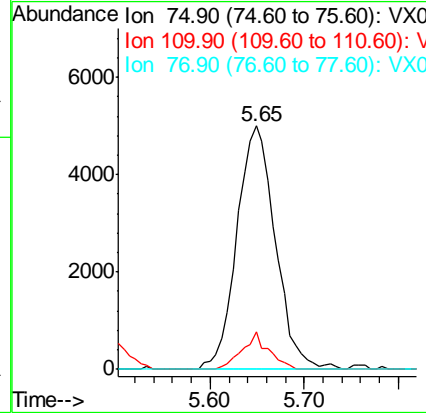
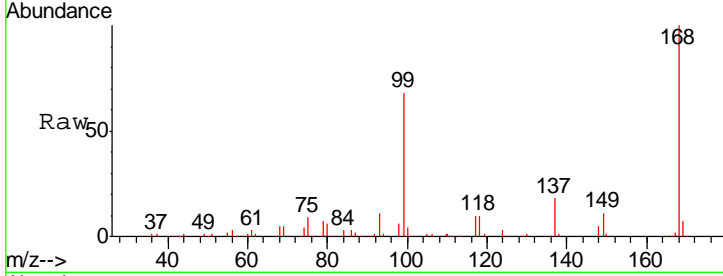




#36
 1,1-Dichloropropene
 Concen: 5.261 ug/l
 RT: 5.65 min Scan# 781
 Delta R.T. -0.14 min
 Lab File: VX012644.D
 Acq: 24 Sep 2019 19:38

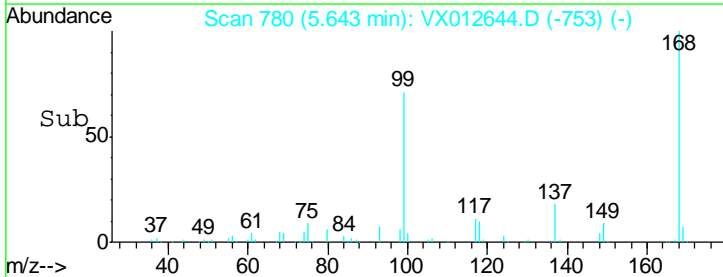
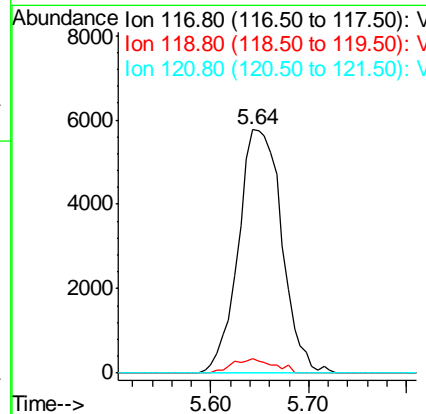
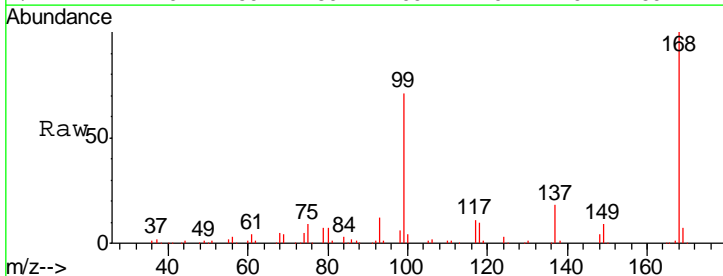
Instrument :
 MSVOA_X
 ClientSampled :
 SB-1ME

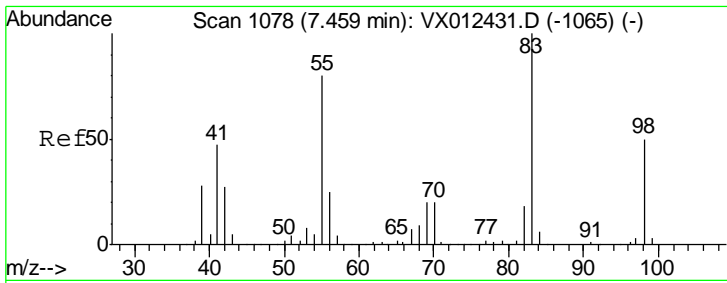
Tgt Ion	Resp	Lower	Upper
75	14273		
110	10.4	16.7	50.0#
77	0.0	24.2	36.2#



#38
 Carbon Tetrachloride
 Concen: 6.435 ug/l
 RT: 5.64 min Scan# 780
 Delta R.T. -0.13 min
 Lab File: VX012644.D
 Acq: 24 Sep 2019 19:38

Tgt Ion	Resp	Lower	Upper
117	17734		
119	5.8	75.7	113.5#
121	0.0	24.2	36.4#

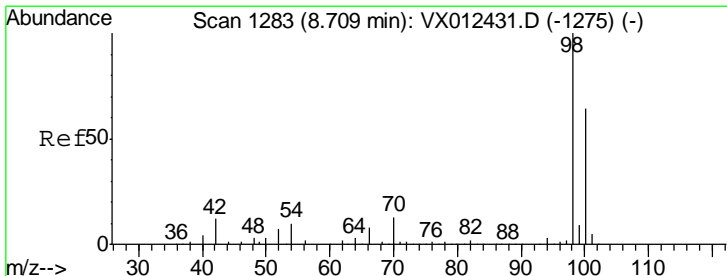
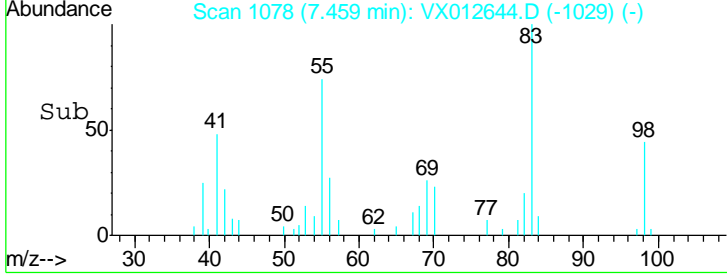
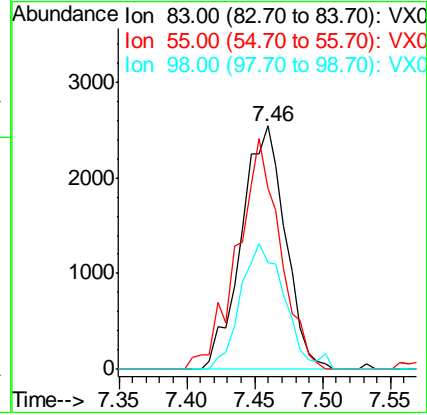
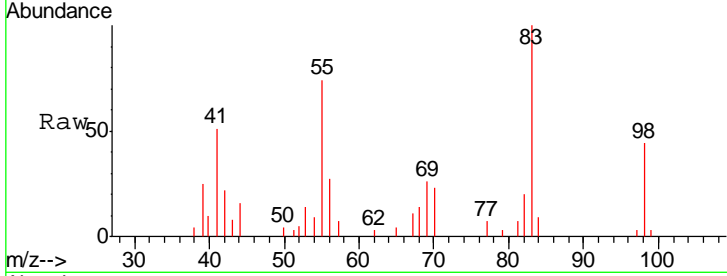




#39
 Methylcyclohexane
 Concen: 1.760 ug/l
 RT: 7.46 min Scan# 1078
 Delta R.T. 0.00 min
 Lab File: VX012644.D
 Acq: 24 Sep 2019 19:38

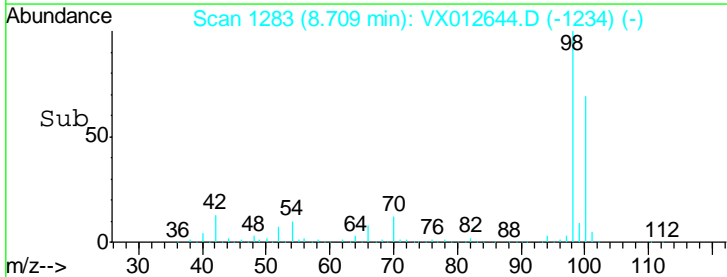
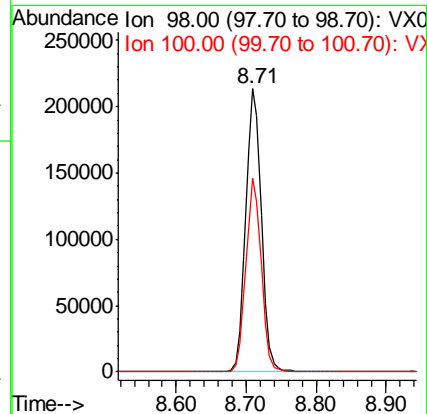
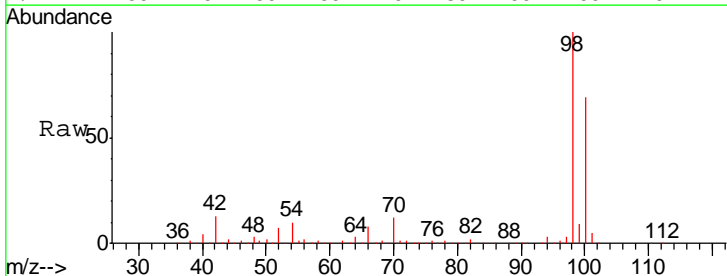
Instrument : MSVOA_X
 ClientSampled : SB-1ME

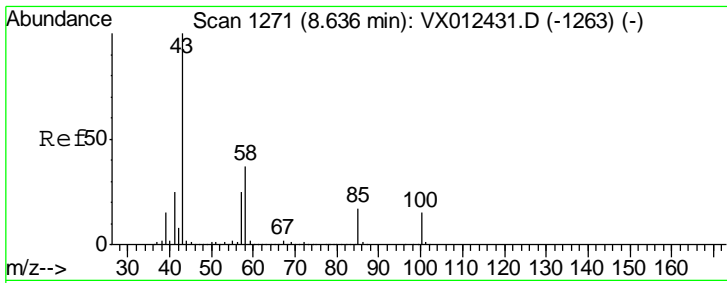
Tgt Ion	Resp	Lower	Upper
83	5749		
55	74.5	64.4	96.6
98	43.8	40.1	60.1



#50
 Toluene-d8
 Concen: 51.612 ug/l
 RT: 8.71 min Scan# 1283
 Delta R.T. 0.00 min
 Lab File: VX012644.D
 Acq: 24 Sep 2019 19:38

Tgt Ion	Resp	Lower	Upper
98	333189		
100	67.4	53.4	80.2

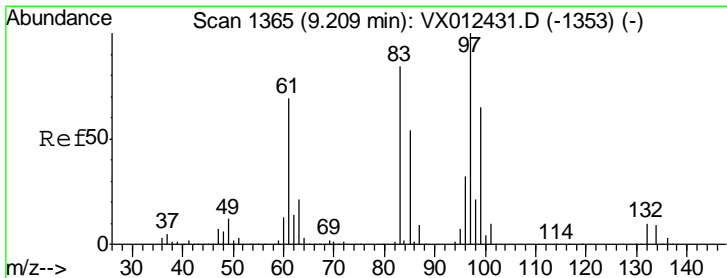
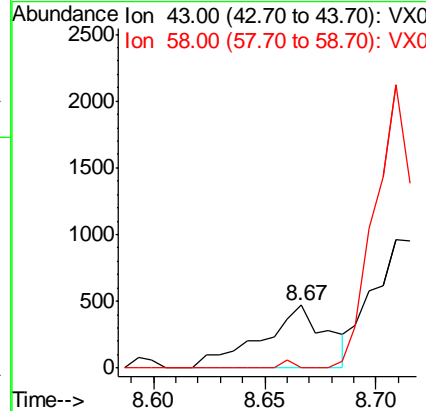
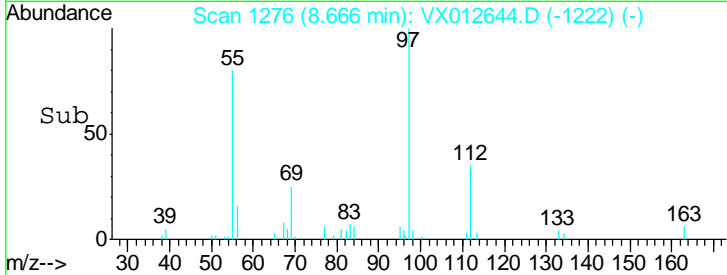
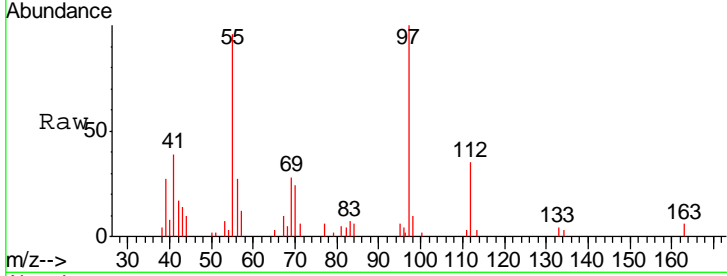




#51
 4-Methyl-2-Pentanone
 Concen: 0.290 ug/l
 RT: 8.67 min Scan# 1276
 Delta R.T. 0.03 min
 Lab File: VX012644.D
 Acq: 24 Sep 2019 19:38

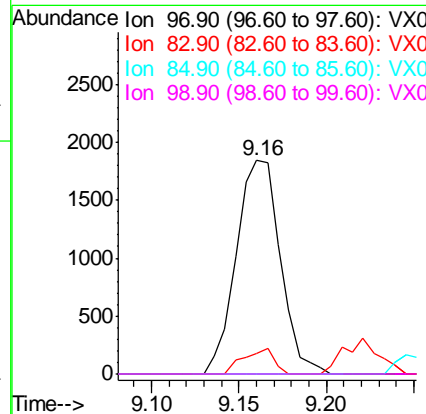
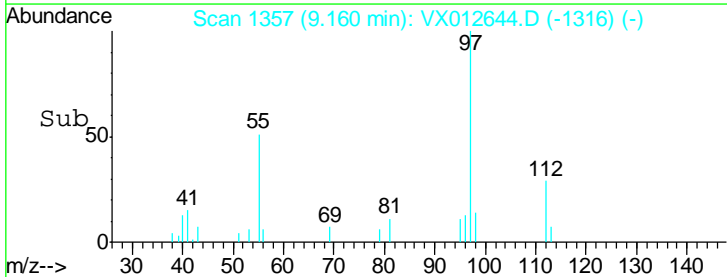
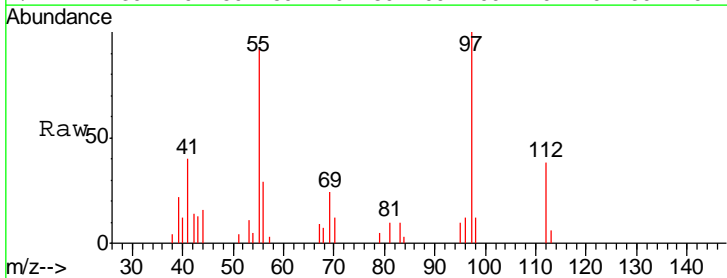
Instrument :
 MSVOA_X
 ClientSampled :
 SB-1ME

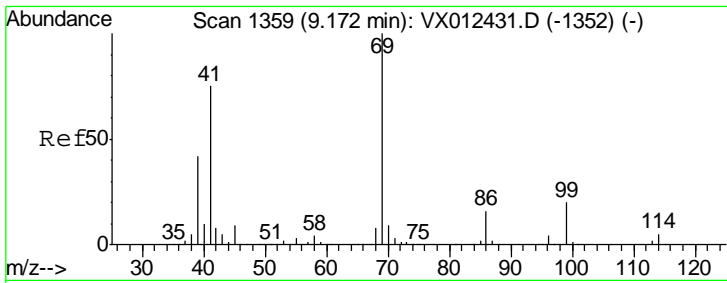
Tgt Ion	Resp	Lower	Upper
43	100		
58	0.0	29.8	44.6#



#55
 1,1,2-Trichloroethane
 Concen: 1.623 ug/l
 RT: 9.16 min Scan# 1357
 Delta R.T. -0.05 min
 Lab File: VX012644.D
 Acq: 24 Sep 2019 19:38

Tgt Ion	Resp	Lower	Upper
97	100		
83	9.7	67.4	101.2#
85	0.0	43.5	65.3#
99	0.0	51.8	77.8#

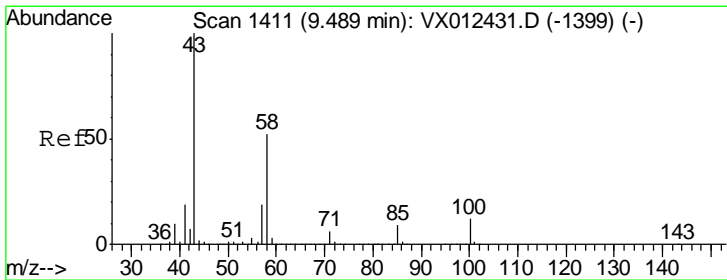
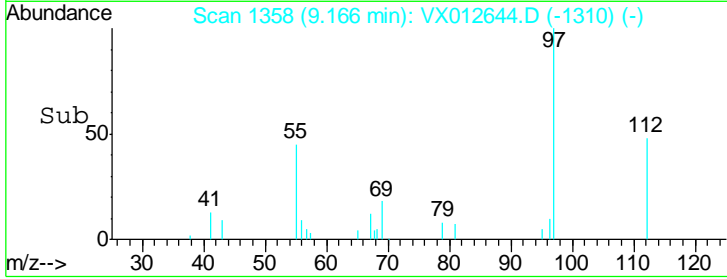
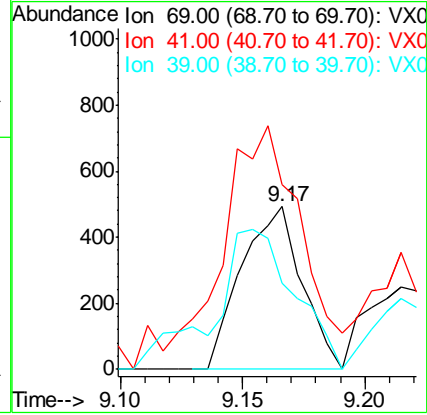
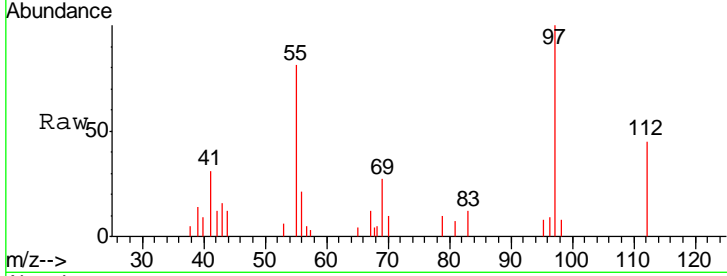




#56
 Ethyl methacrylate
 Concen: 0.253 ug/l
 RT: 9.17 min Scan# 1358
 Delta R.T. -0.01 min
 Lab File: VX012644.D
 Acq: 24 Sep 2019 19:38

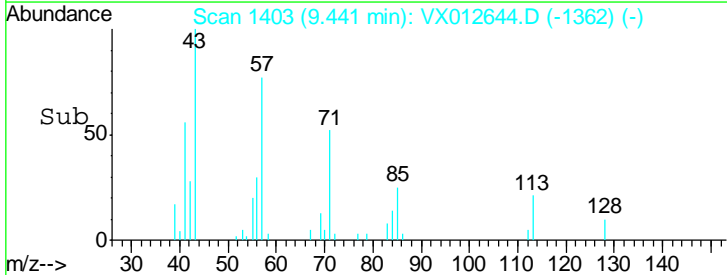
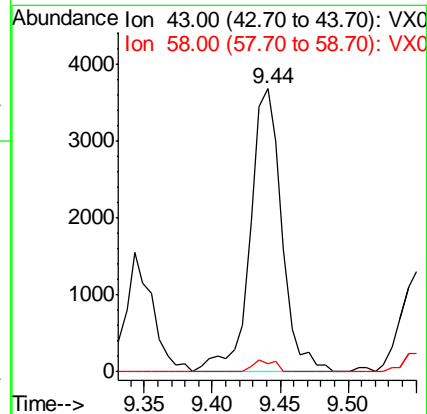
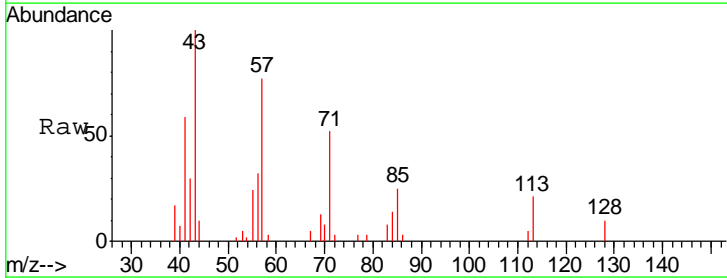
Instrument :
 MSVOA_X
 ClientSampled :
 SB-1ME

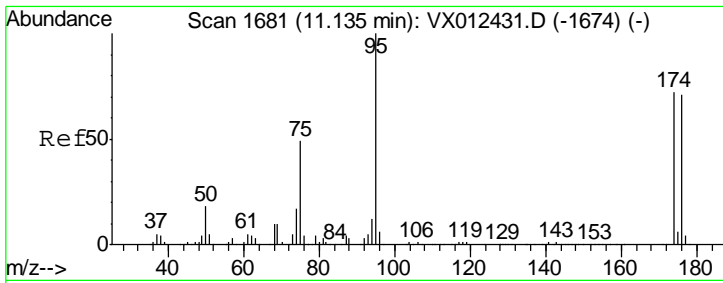
Tgt Ion	Resp	Lower	Upper
69	100		
41	201.2	58.4	87.6#
39	115.7	33.4	50.0#



#59
 2-Hexanone
 Concen: 2.392 ug/l
 RT: 9.44 min Scan# 1403
 Delta R.T. -0.05 min
 Lab File: VX012644.D
 Acq: 24 Sep 2019 19:38

Tgt Ion	Resp	Lower	Upper
43	100		
58	2.8	25.7	77.1#

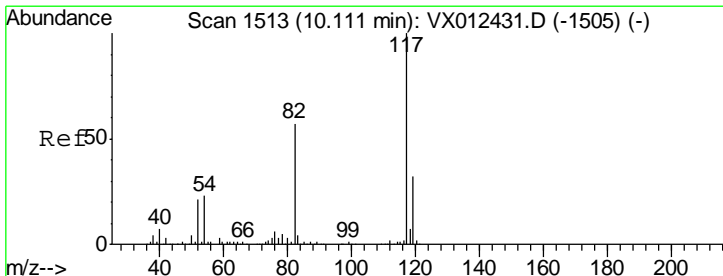
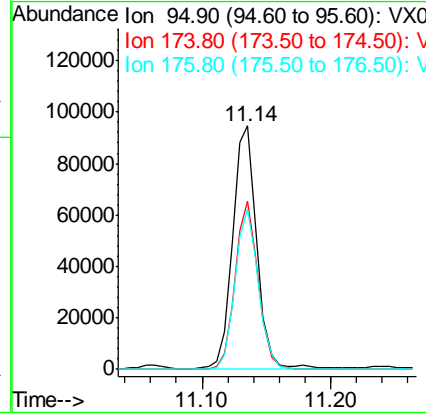
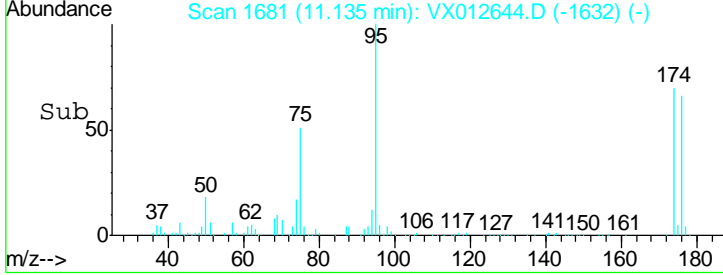
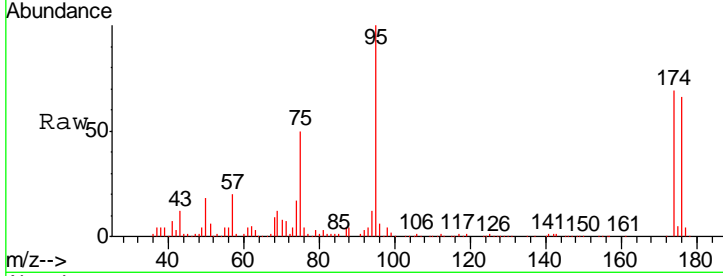




#62
 4-Bromofluorobenzene
 Concen: 48.866 ug/l
 RT: 11.14 min Scan# 1681
 Delta R.T. 0.00 min
 Lab File: VX012644.D
 Acq: 24 Sep 2019 19:38

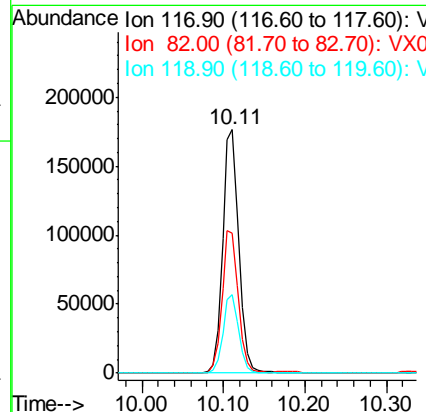
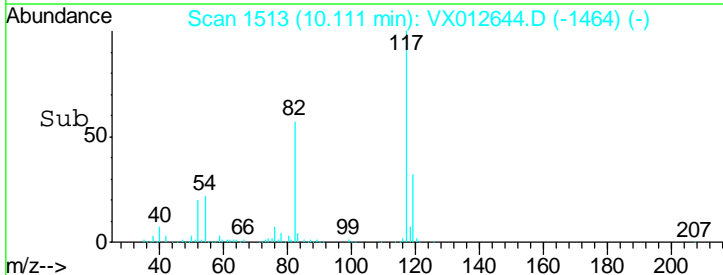
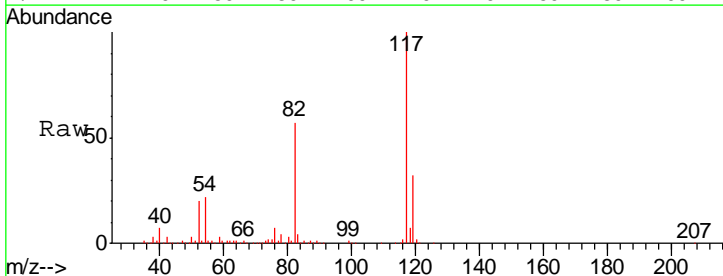
Instrument : MSVOA_X
 ClientSampled : SB-1ME

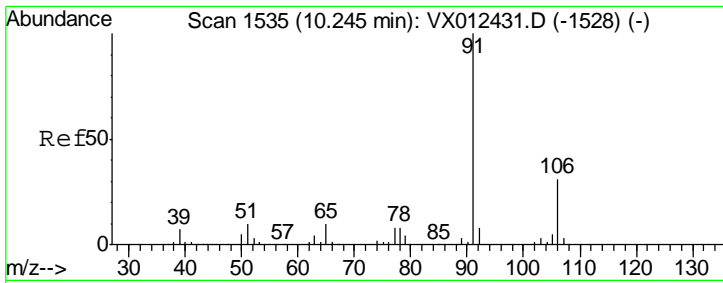
Tgt Ion	Resp	Lower	Upper
95	124039		
174	66.0	0.0	140.0
176	63.4	0.0	135.4



#63
 Chlorobenzene-d5
 Concen: 50.000 ug/l
 RT: 10.11 min Scan# 1513
 Delta R.T. 0.00 min
 Lab File: VX012644.D
 Acq: 24 Sep 2019 19:38

Tgt Ion	Resp	Lower	Upper
117	245470		
82	57.3	45.9	68.9
119	32.3	25.3	37.9

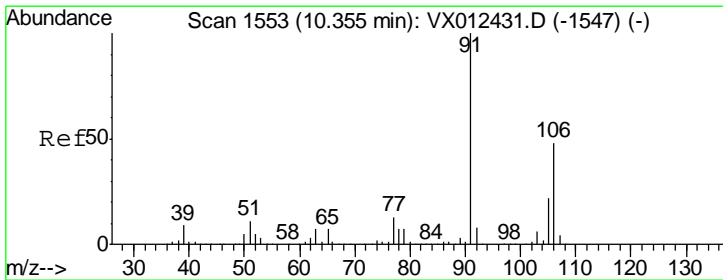
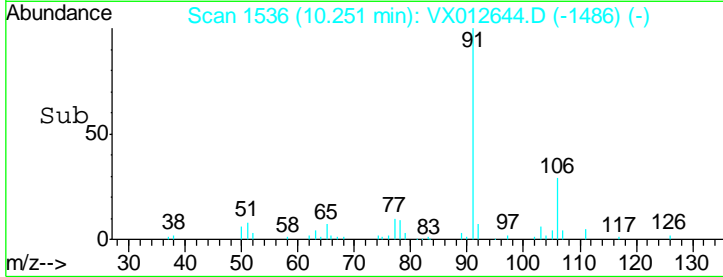
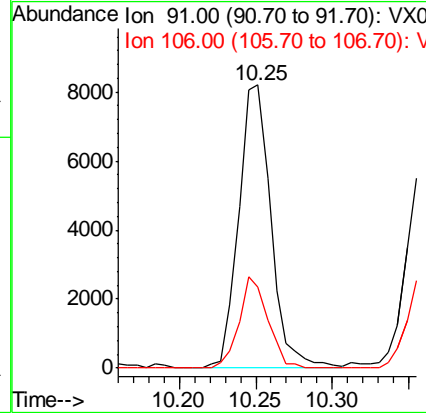
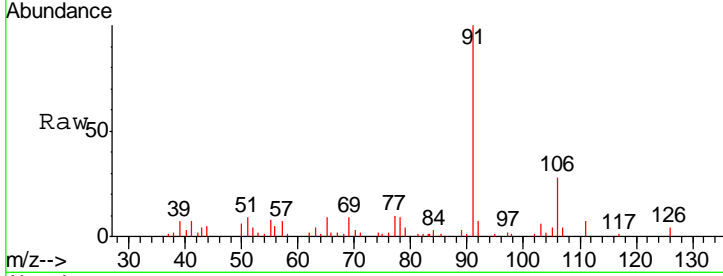




#67
 Ethyl Benzene
 Concen: 1.283 ug/l
 RT: 10.25 min Scan# 1536
 Delta R.T. 0.01 min
 Lab File: VX012644.D
 Acq: 24 Sep 2019 19:38

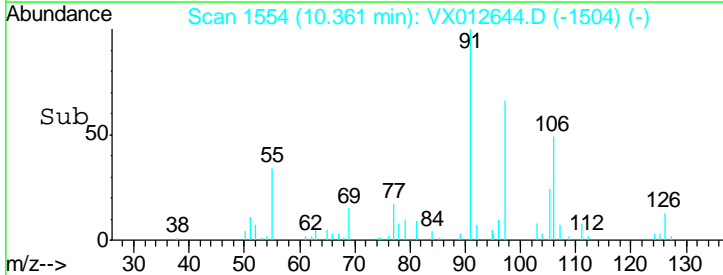
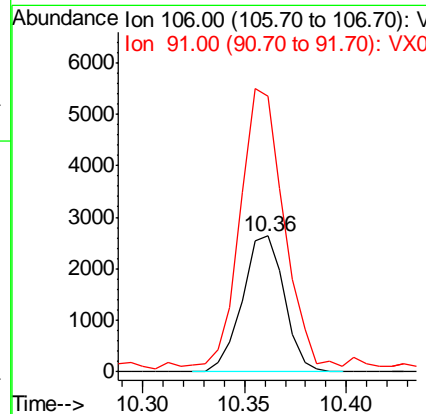
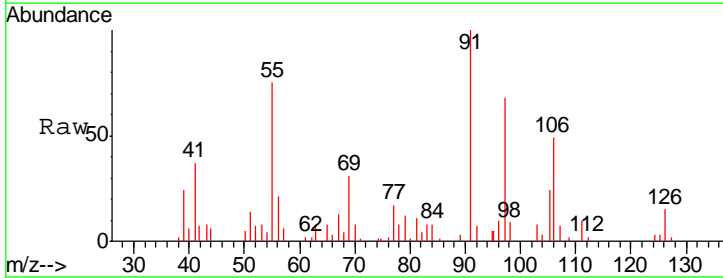
Instrument :
 MSVOA_X
 ClientSampled :
 SB-1ME

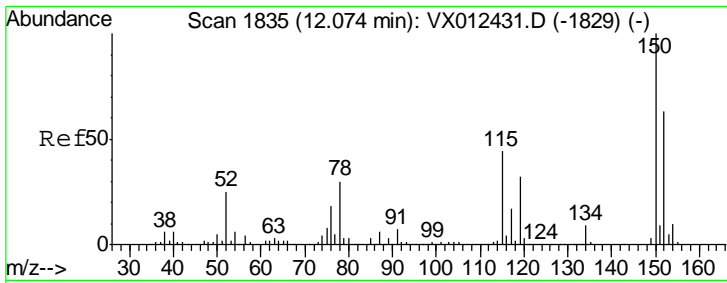
Tgt Ion: 91 Resp: 12029
 Ion Ratio Lower Upper
 91 100
 106 28.5 24.6 37.0



#68
 m/p-Xylenes
 Concen: 1.068 ug/l
 RT: 10.36 min Scan# 1554
 Delta R.T. 0.01 min
 Lab File: VX012644.D
 Acq: 24 Sep 2019 19:38

Tgt Ion: 106 Resp: 3750
 Ion Ratio Lower Upper
 106 100
 91 226.6 166.6 250.0

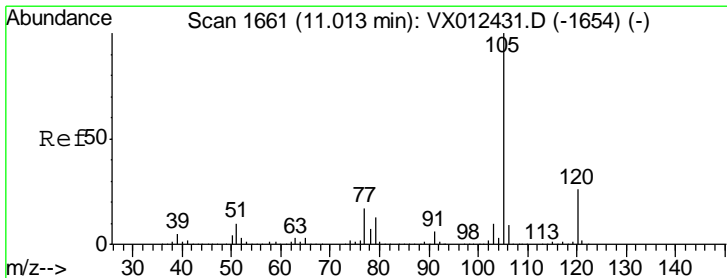
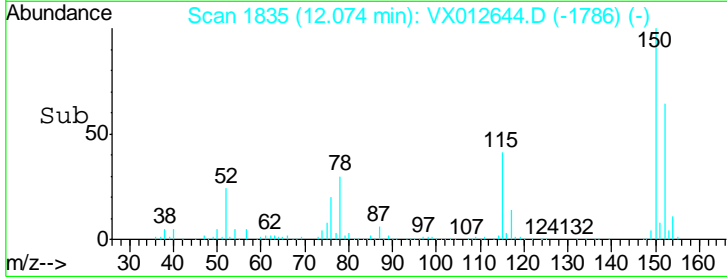
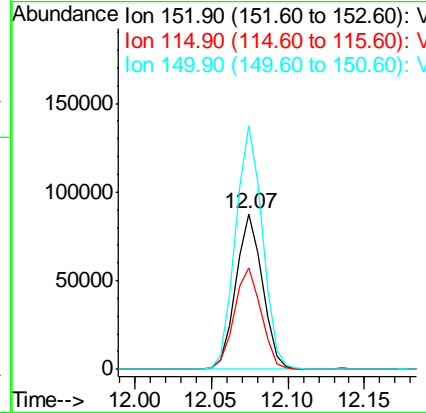
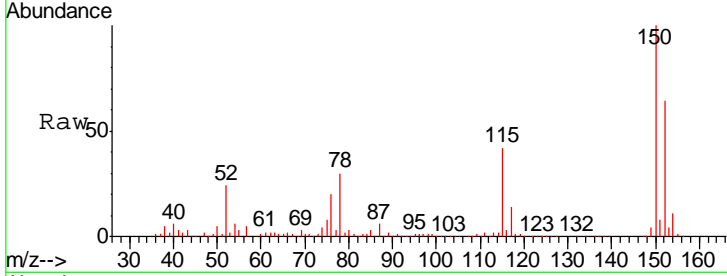




#72
 1,4-Dichlorobenzene-d4
 Concen: 50.000 ug/l
 RT: 12.07 min Scan# 1835
 Delta R.T. 0.00 min
 Lab File: VX012644.D
 Acq: 24 Sep 2019 19:38

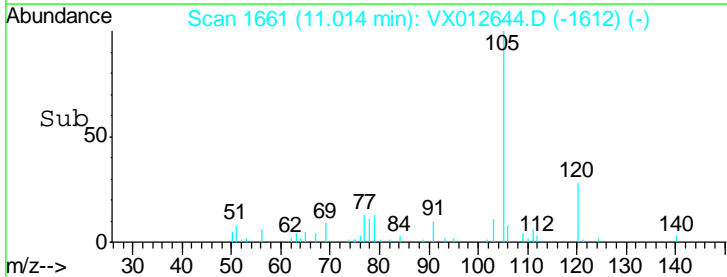
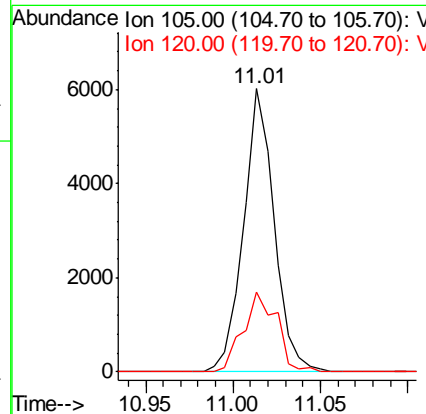
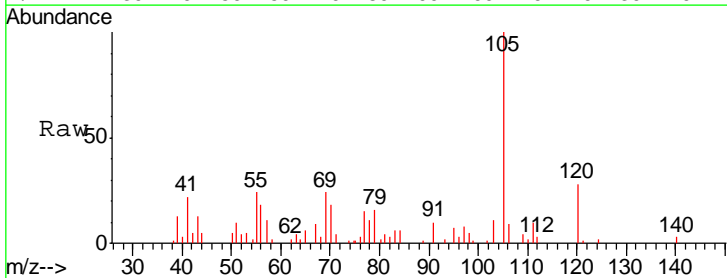
Instrument :
 MSVOA_X
 ClientSampled :
 SB-1ME

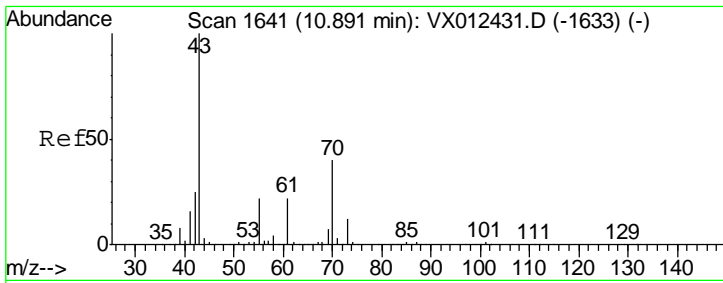
Tgt Ion	Resp	Lower	Upper
152	106021		
152	100		
115	66.0	44.1	132.3
150	157.6	0.0	343.8



#73
 Isopropylbenzene
 Concen: 0.849 ug/l
 RT: 11.01 min Scan# 1661
 Delta R.T. 0.00 min
 Lab File: VX012644.D
 Acq: 24 Sep 2019 19:38

Tgt Ion	Resp	Lower	Upper
105	7330		
105	100		
120	31.0	12.9	38.7

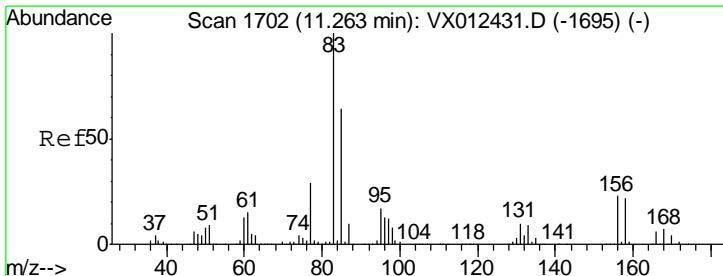
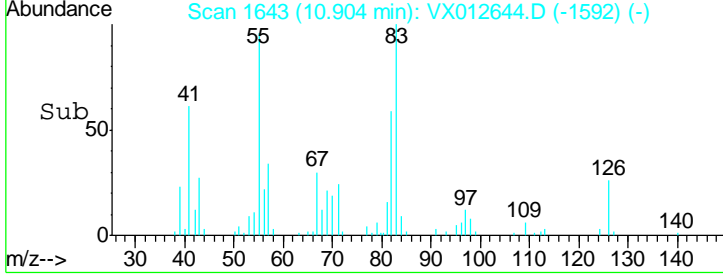
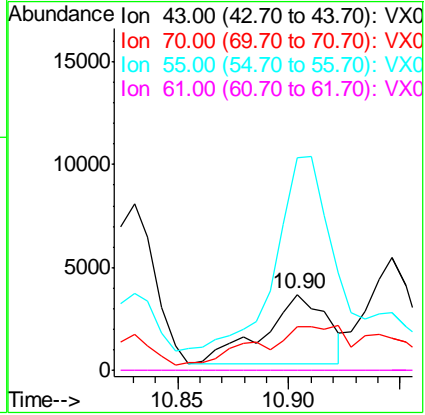
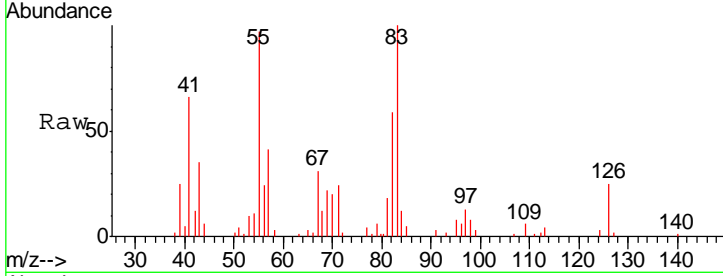




#74
 N-ethyl acetate
 Concen: 1.592 ug/l
 RT: 10.90 min Scan# 1643
 Delta R.T. 0.01 min
 Lab File: VX012644.D
 Acq: 24 Sep 2019 19:38

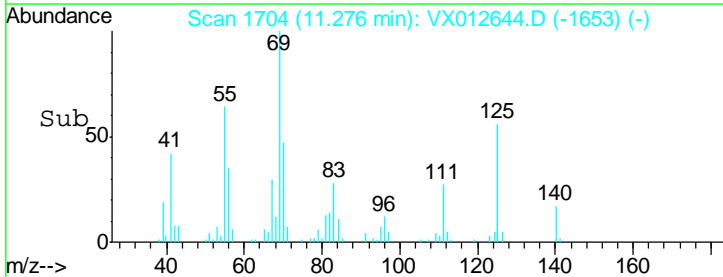
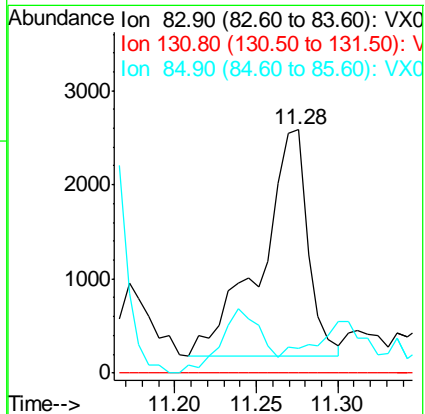
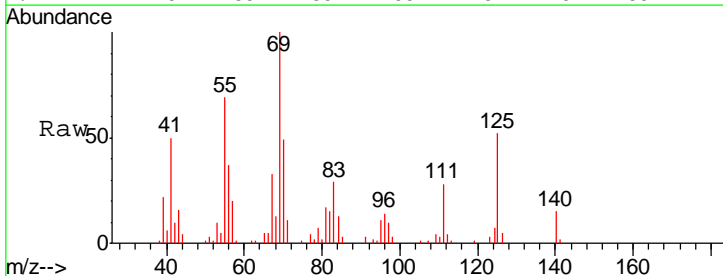
Instrument : MSVOA_X
 ClientSampled : SB-1ME

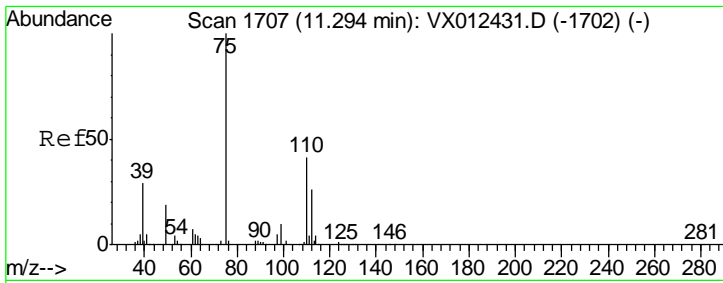
Tgt Ion	Resp	Lower	Upper
43	100		
70	67.4	32.4	48.6#
55	304.5	18.2	27.4#
61	0.0	18.5	27.7#



#75
 1,1,2,2-Tetrachloroethane
 Concen: 1.690 ug/l
 RT: 11.28 min Scan# 1704
 Delta R.T. 0.01 min
 Lab File: VX012644.D
 Acq: 24 Sep 2019 19:38

Tgt Ion	Resp	Lower	Upper
83	100		
131	0.0	5.2	15.6#
85	0.0	32.0	96.0#

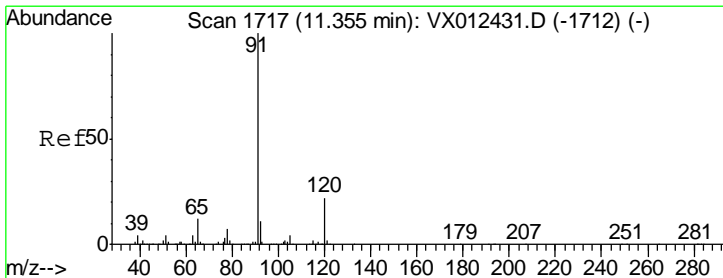
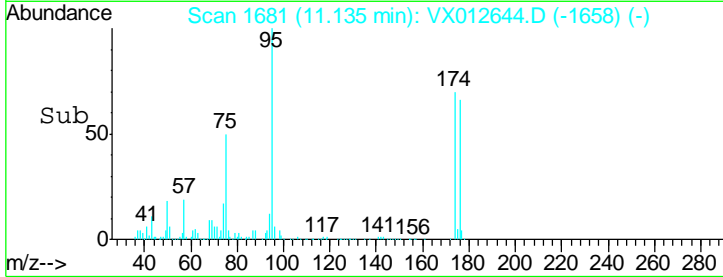
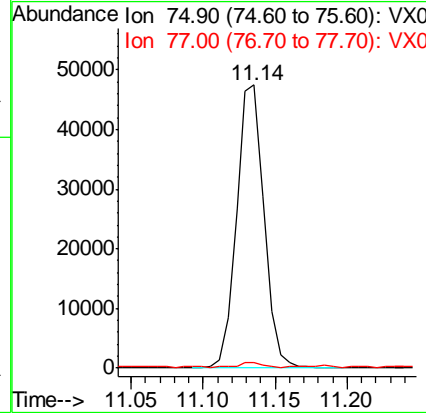
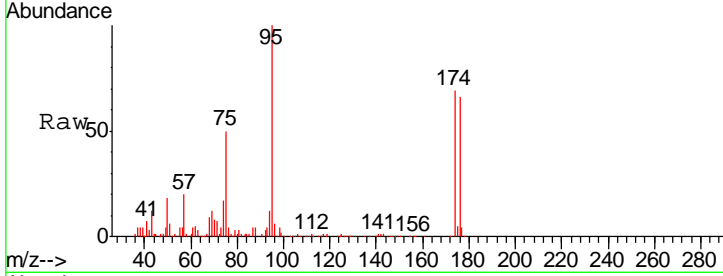




#76
 1,2,3-Trichloropropane
 Concen: 22.610 ug/l
 RT: 11.14 min Scan# 1681
 Delta R.T. -0.16 min
 Lab File: VX012644.D
 Acq: 24 Sep 2019 19:38

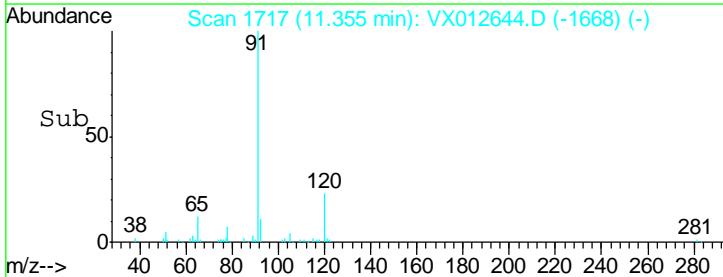
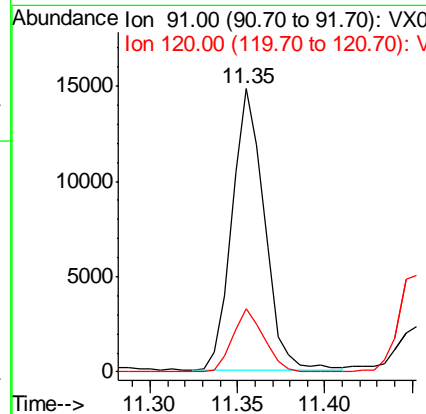
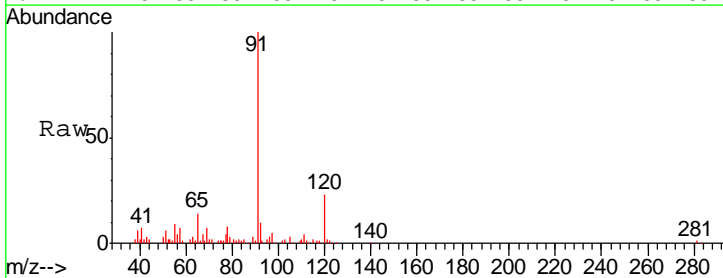
Instrument :
 MSVOA_X
 ClientSampled :
 SB-1ME

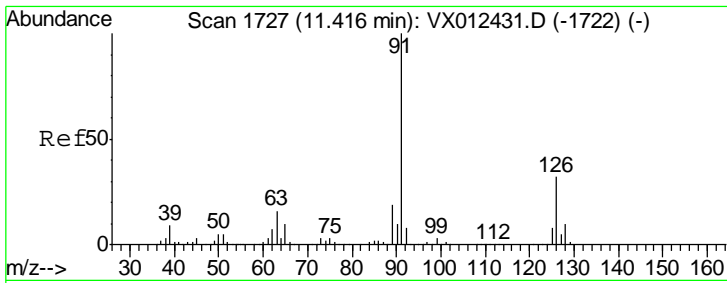
Tgt Ion: 75 Resp: 63411
 Ion Ratio Lower Upper
 75 100
 77 1.4 19.7 59.0#



#78
 n-propylbenzene
 Concen: 1.966 ug/l
 RT: 11.35 min Scan# 1717
 Delta R.T. 0.00 min
 Lab File: VX012644.D
 Acq: 24 Sep 2019 19:38

Tgt Ion: 91 Resp: 19110
 Ion Ratio Lower Upper
 91 100
 120 21.3 11.3 33.8

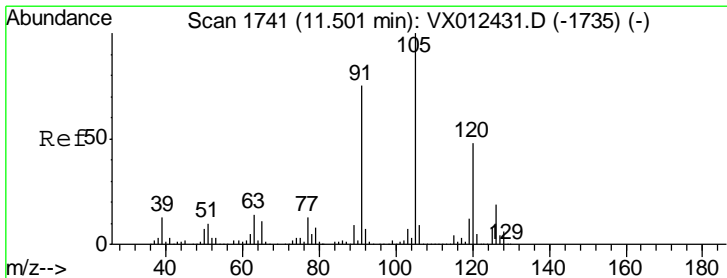
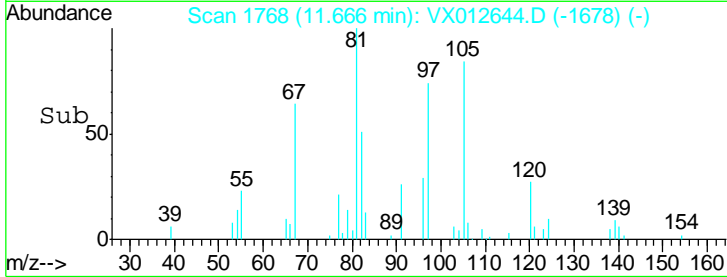
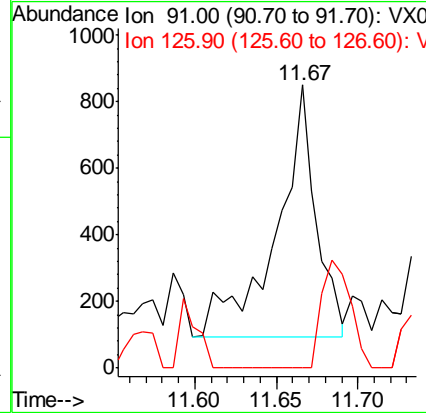
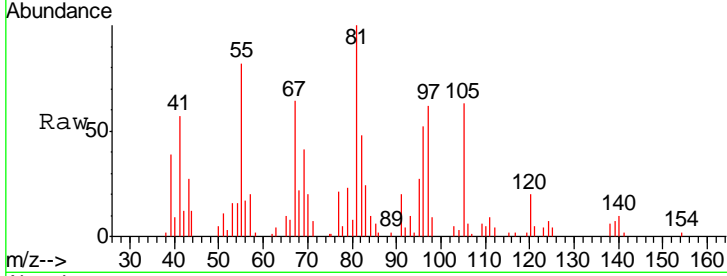




#79
 2-Chlorotoluene
 Concen: 0.212 ug/l
 RT: 11.67 min Scan# 1768
 Delta R.T. 0.25 min
 Lab File: VX012644.D
 Acq: 24 Sep 2019 19:38

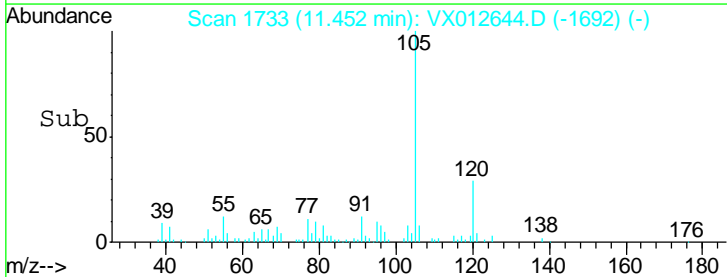
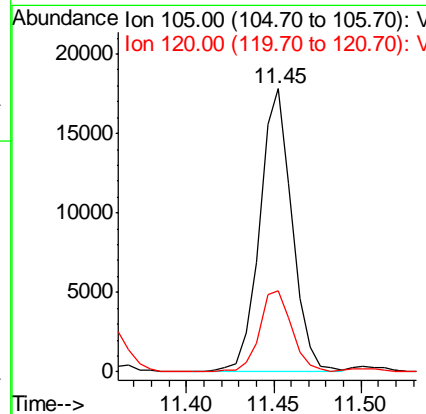
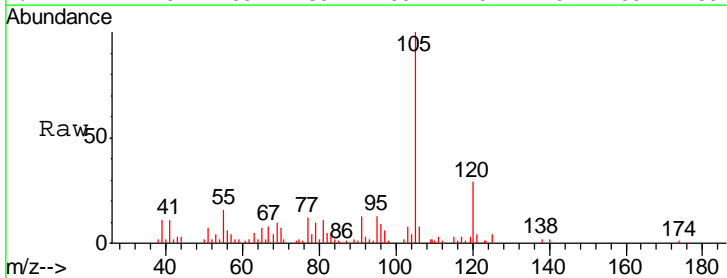
Instrument :
 MSVOA_X
 ClientSampled :
 SB-1ME

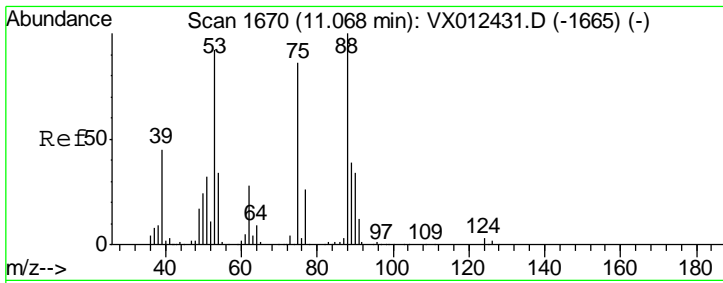
Tgt Ion: 91 Resp: 1287
 Ion Ratio Lower Upper
 91 100
 126 23.5 16.4 49.4



#80
 1,3,5-Trimethylbenzene
 Concen: 3.149 ug/l
 RT: 11.45 min Scan# 1733
 Delta R.T. -0.05 min
 Lab File: VX012644.D
 Acq: 24 Sep 2019 19:38

Tgt Ion: 105 Resp: 22805
 Ion Ratio Lower Upper
 105 100
 120 28.9 24.3 72.8

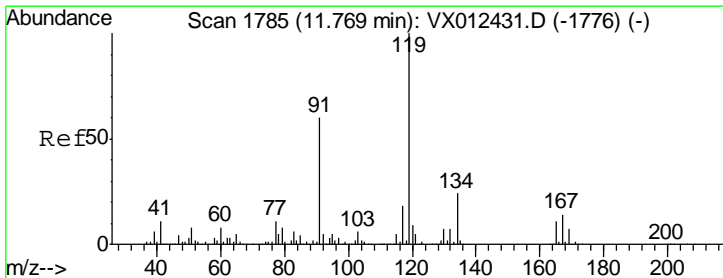
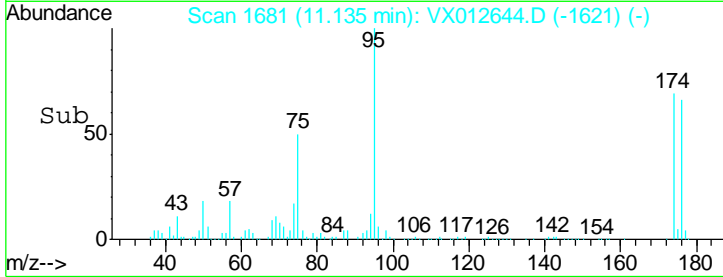
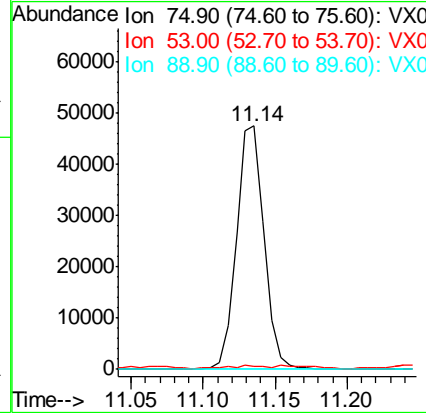
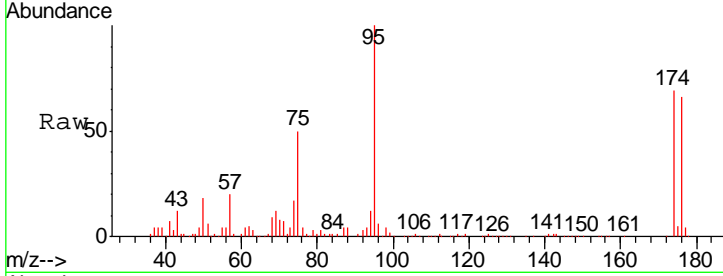




#81
 trans-1,4-Dichloro-2-butene
 Concen: 64.796 ug/l
 RT: 11.14 min Scan# 1681
 Delta R.T. 0.07 min
 Lab File: VX012644.D
 Acq: 24 Sep 2019 19:38

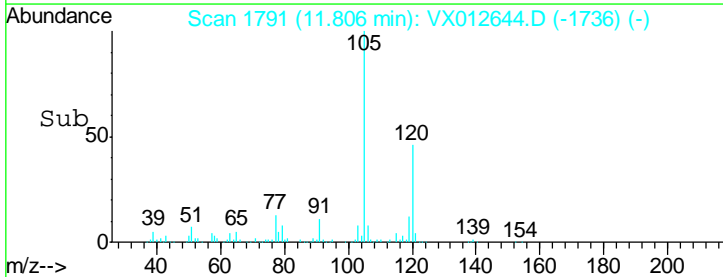
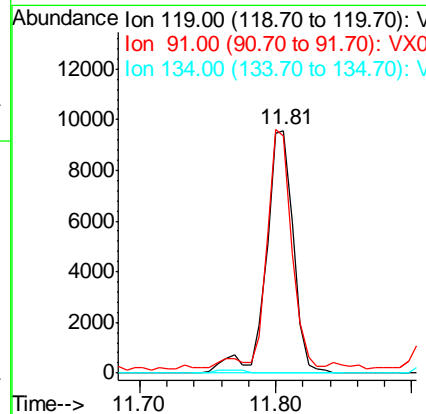
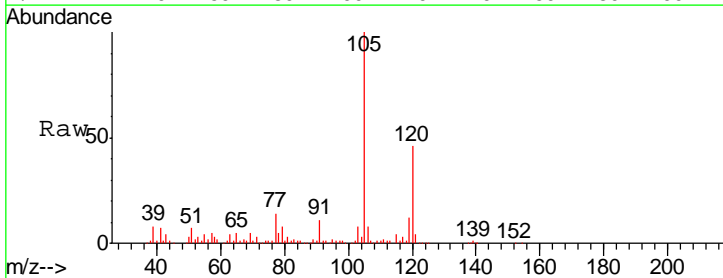
Instrument :
 MSVOA_X
 ClientSampled :
 SB-1ME

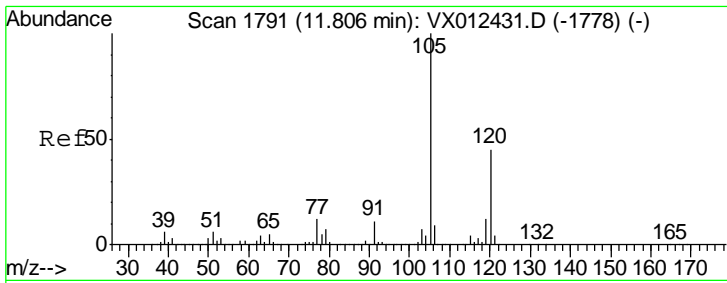
Tgt Ion	Resp	Lower	Upper
75	100		
53	1.4	83.6	125.4#
89	0.0	36.3	54.5#



#83
 tert-Butylbenzene
 Concen: 1.935 ug/l
 RT: 11.81 min Scan# 1791
 Delta R.T. 0.04 min
 Lab File: VX012644.D
 Acq: 24 Sep 2019 19:38

Tgt Ion	Resp	Lower	Upper
119	100		
91	86.2	30.0	90.0
134	0.0	11.3	33.9#

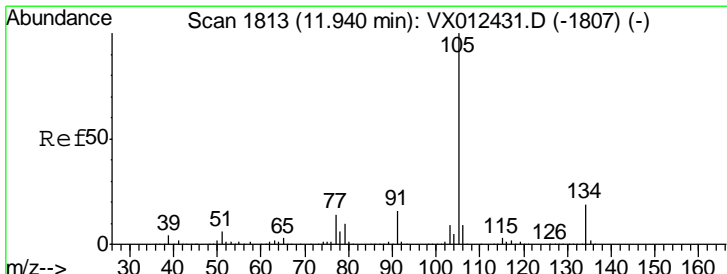
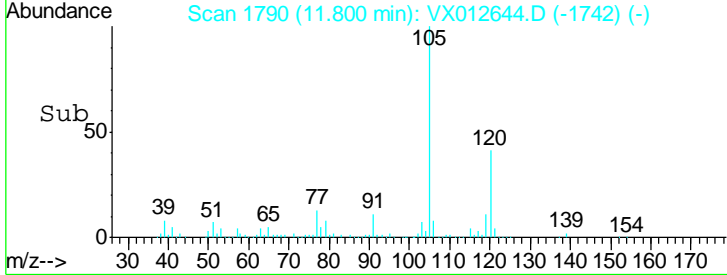
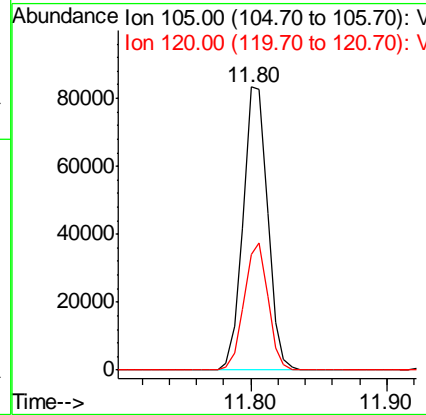
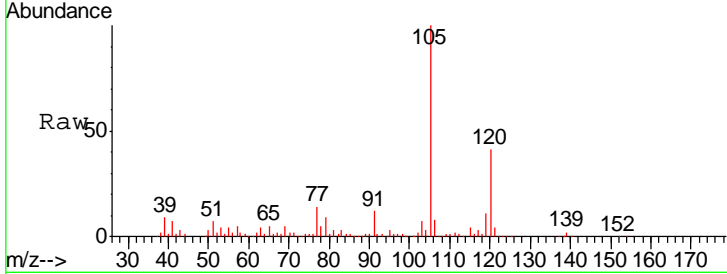




#84
 1,2,4-Trimethylbenzene
 Concen: 14.428 ug/l
 RT: 11.80 min Scan# 1790
 Delta R.T. -0.01 min
 Lab File: VX012644.D
 Acq: 24 Sep 2019 19:38

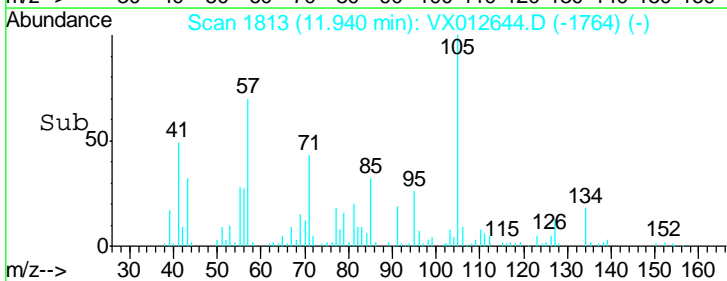
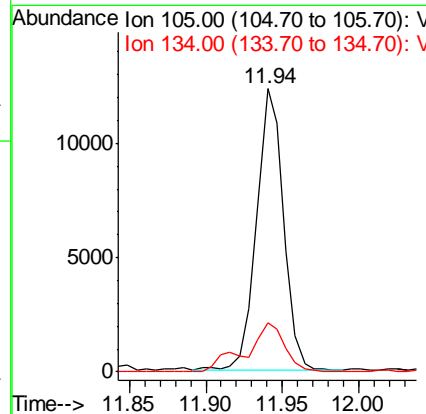
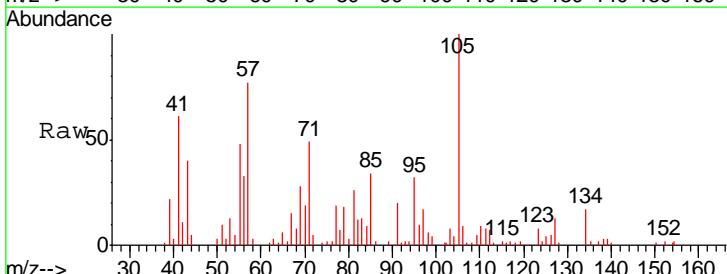
Instrument :
 MSVOA_X
 ClientSampled :
 SB-1ME

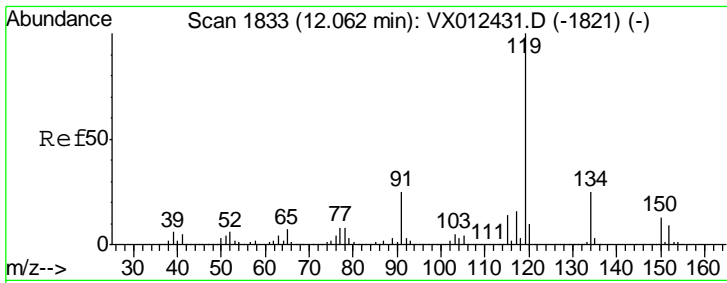
Tgt Ion:105 Resp: 105397
 Ion Ratio Lower Upper
 105 100
 120 43.8 22.2 66.6



#85
 sec-Butylbenzene
 Concen: 1.866 ug/l
 RT: 11.94 min Scan# 1813
 Delta R.T. 0.00 min
 Lab File: VX012644.D
 Acq: 24 Sep 2019 19:38

Tgt Ion:105 Resp: 15161
 Ion Ratio Lower Upper
 105 100
 134 24.8 9.8 29.4

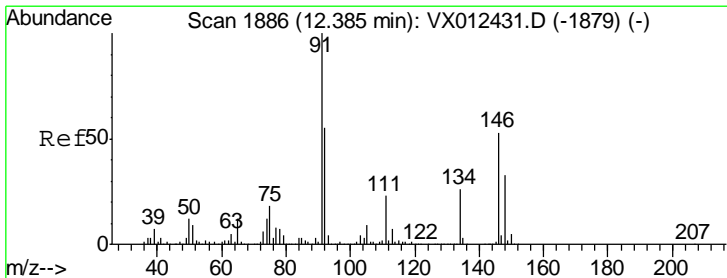
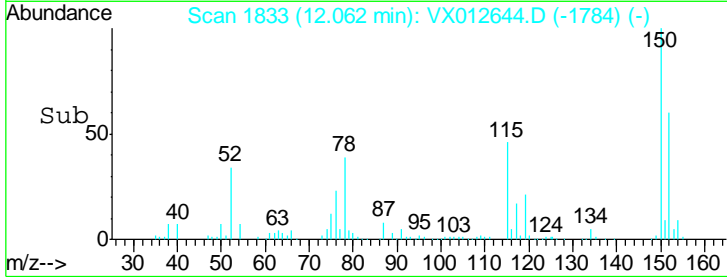
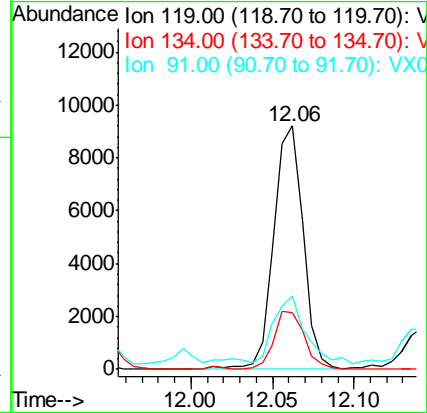
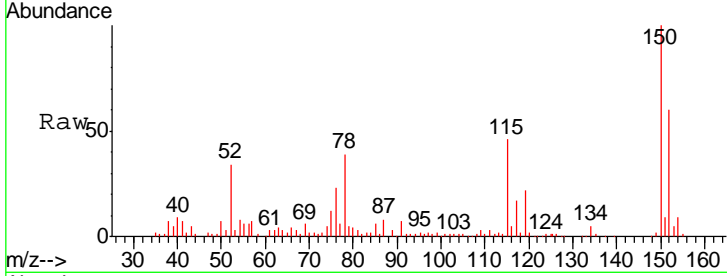




#86
 p-Isopropyltoluene
 Concen: 1.575 ug/l
 RT: 12.06 min Scan# 1833
 Delta R.T. 0.00 min
 Lab File: VX012644.D
 Acq: 24 Sep 2019 19:38

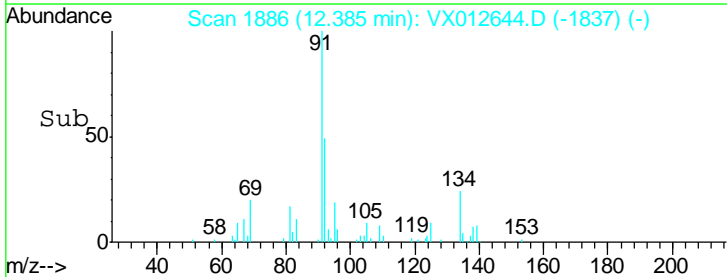
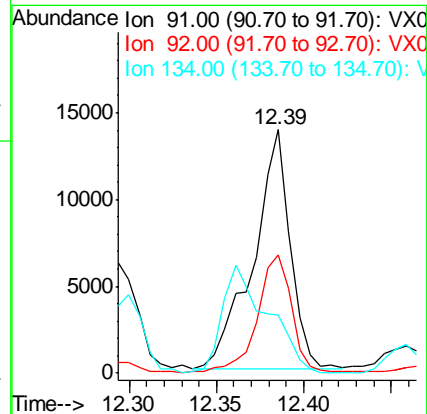
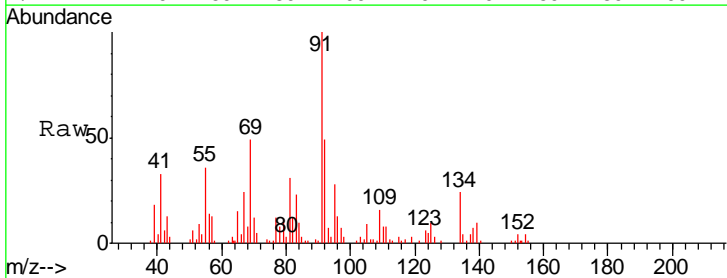
Instrument :
 MSVOA_X
 ClientSampled :
 SB-1ME

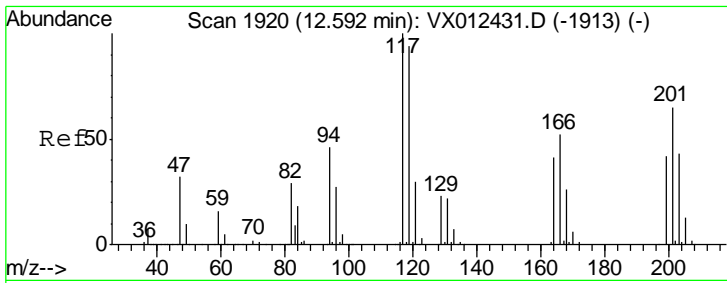
Tgt Ion	Resp	Lower	Upper
119	11544		
134	24.6	12.7	38.1
91	30.0	12.8	38.4



#89
 n-Butylbenzene
 Concen: 3.145 ug/l
 RT: 12.39 min Scan# 1886
 Delta R.T. 0.00 min
 Lab File: VX012644.D
 Acq: 24 Sep 2019 19:38

Tgt Ion	Resp	Lower	Upper
91	20318		
92	46.4	27.7	83.0
134	0.0	12.9	38.6#

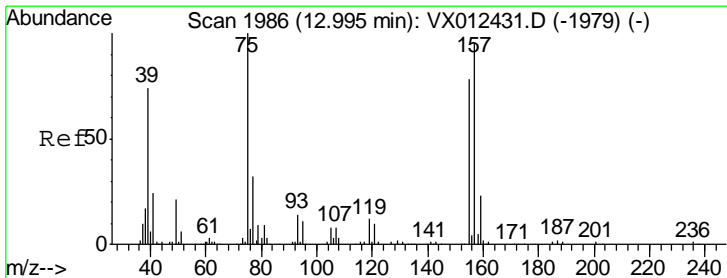
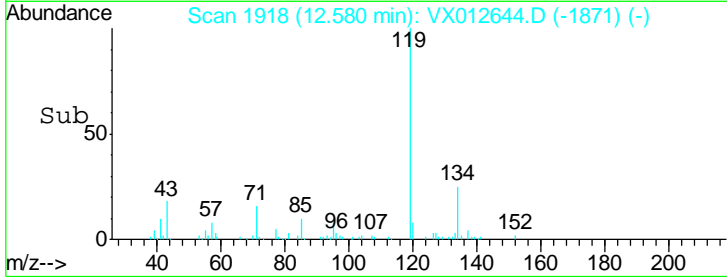
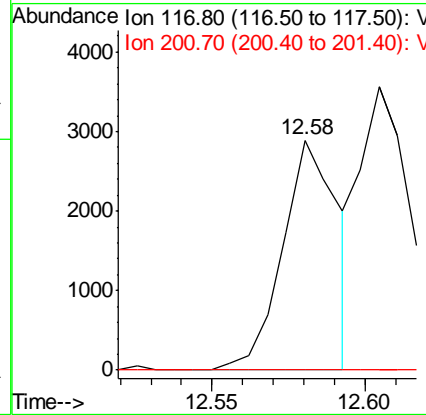
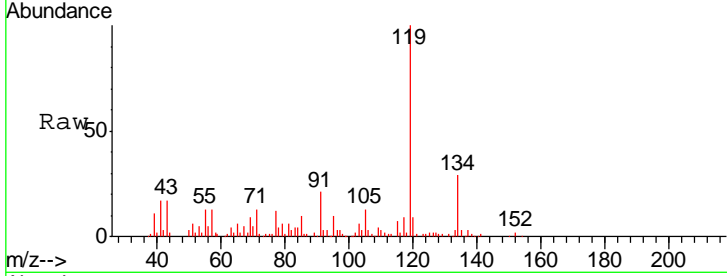




#90
 Hexachloroethane
 Concen: 2.791 ug/l
 RT: 12.58 min Scan# 1918
 Delta R.T. -0.01 min
 Lab File: VX012644.D
 Acq: 24 Sep 2019 19:38

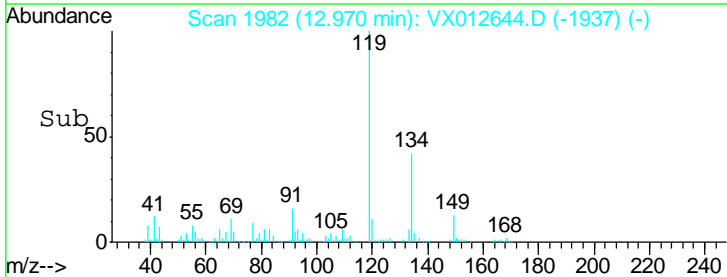
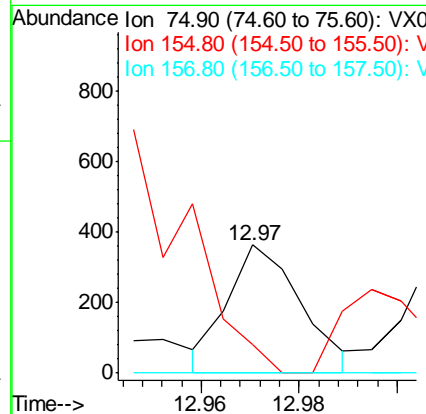
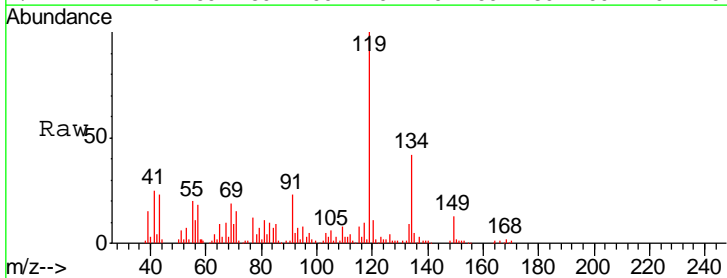
Instrument :
 MSVOA_X
 ClientSampled :
 SB-1ME

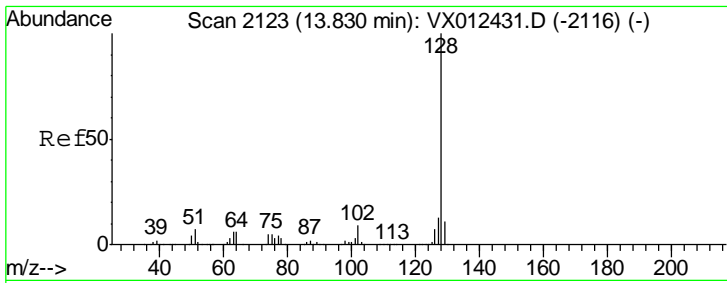
Tgt Ion: 117 Resp: 3648
 Ion Ratio Lower Upper
 117 100
 201 0.0 33.3 99.8#



#92
 1,2-Dibromo-3-Chloropropane
 Concen: 0.528 ug/l
 RT: 12.97 min Scan# 1982
 Delta R.T. -0.02 min
 Lab File: VX012644.D
 Acq: 24 Sep 2019 19:38

Tgt Ion: 75 Resp: 378
 Ion Ratio Lower Upper
 75 100
 155 0.0 38.6 115.8#
 157 0.0 50.6 151.9#

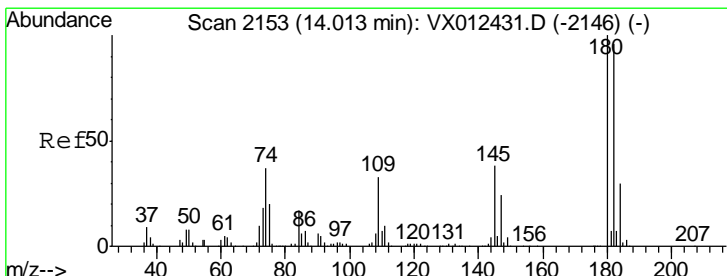
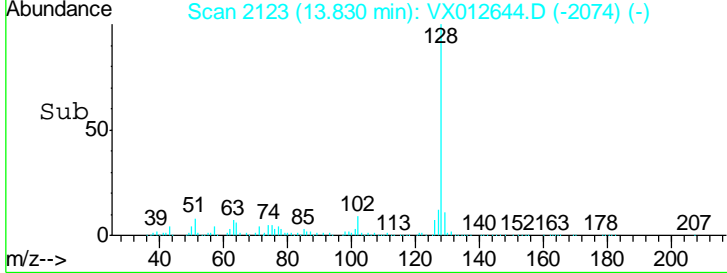
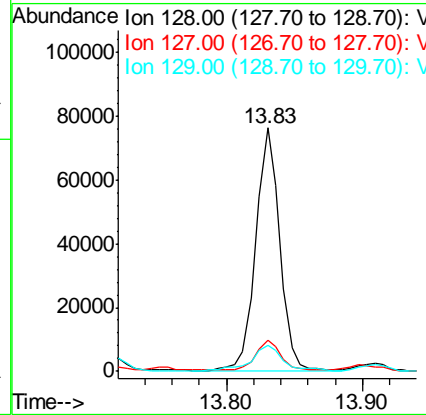
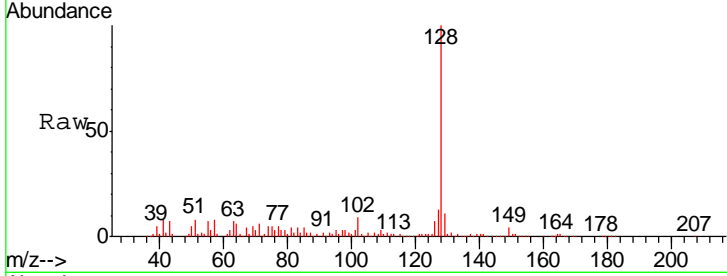




#95
 Naphthalene
 Concen: 12.212 ug/l
 RT: 13.83 min Scan# 2123
 Delta R.T. 0.00 min
 Lab File: VX012644.D
 Acq: 24 Sep 2019 19:38

Instrument :
 MSVOA_X
 ClientSampled :
 SB-1ME

Tgt Ion	Resp	Lower	Upper
128	94878		
127	13.5	10.2	15.4
129	13.6	8.8	13.2#



#96
 1,2,3-Trichlorobenzene
 Concen: 0.339 ug/l
 RT: 14.03 min Scan# 2155
 Delta R.T. 0.01 min
 Lab File: VX012644.D
 Acq: 24 Sep 2019 19:38

Tgt Ion	Resp	Lower	Upper
180	729		
182	0.0	47.1	141.3#
145	1521.8	18.0	54.0#

