

Data Path : Z:\voasrv\HPCHEM1\MSVOA_X\Data\VX092524\
 Data File : VX043155.D
 Acq On : 25 Sep 2024 15:58
 Operator : JC/MD
 Sample : P4164-18
 Misc : 5.0mL/MSVOA_X/WATER
 ALS Vial : 21 Sample Multiplier: 1

Instrument :
 MSVOA_X
 ClientSampleId :

Quant Time: Sep 26 01:37:15 2024
 Quant Method : Z:\voasrv\HPCHEM1\MSVOA_X\Method\82X092324W.M
 Quant Title : SW846 8260
 QLast Update : Tue Sep 24 03:13:52 2024
 Response via : Initial Calibration

Compound	R.T.	QIon	Response	Conc	Units	Dev(Min)

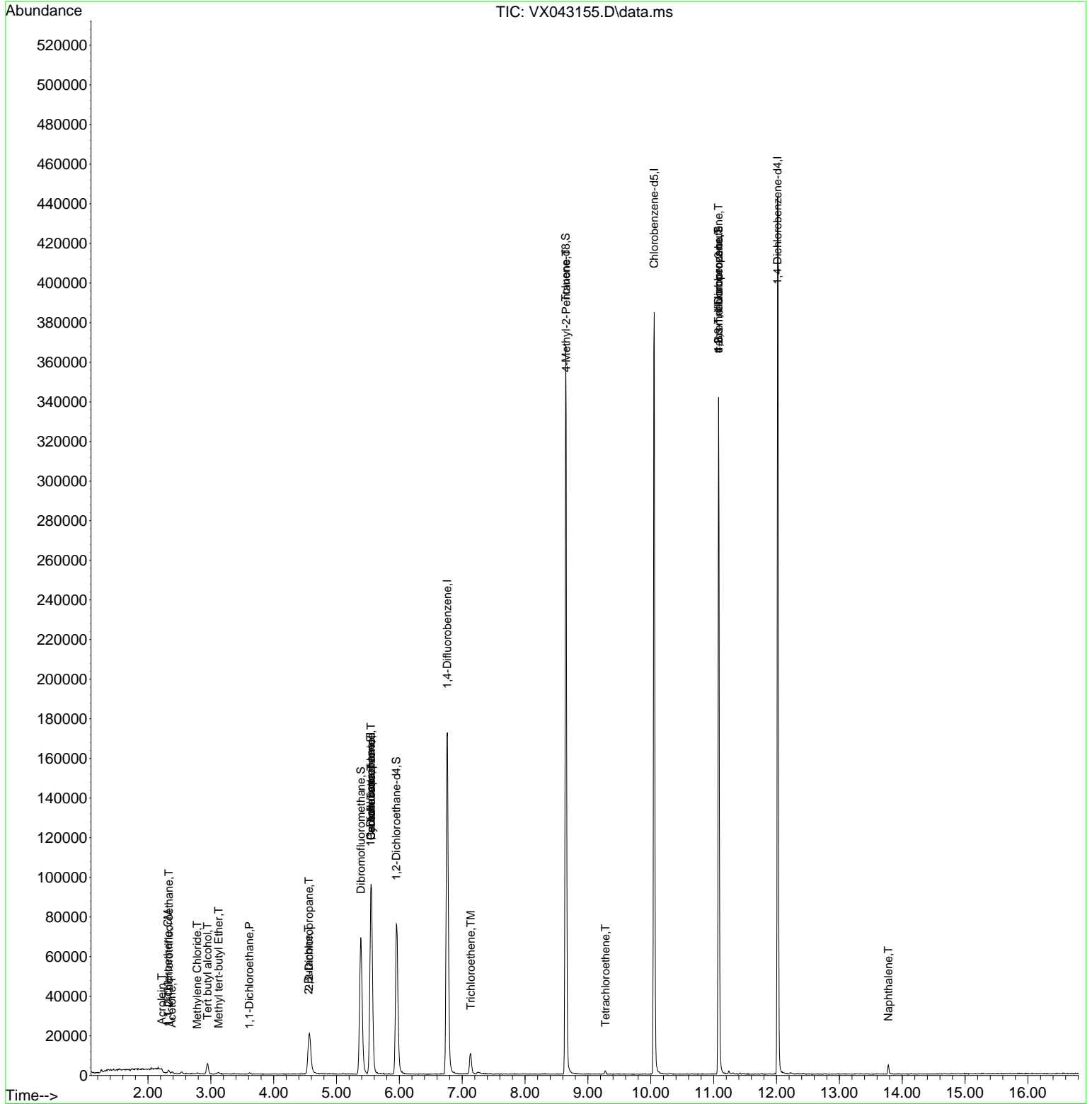
Internal Standards						
1) Pentafluorobenzene	5.550	168	86560	50.000	ug/l	0.00
34) 1,4-Difluorobenzene	6.763	114	173508	50.000	ug/l	0.00
63) Chlorobenzene-d5	10.055	117	168389	50.000	ug/l	0.00
72) 1,4-Dichlorobenzene-d4	12.018	152	88253	50.000	ug/l	0.00
System Monitoring Compounds						
33) 1,2-Dichloroethane-d4	5.952	65	78092	54.313	ug/l	0.00
Spiked Amount	50.000	Range 74 - 125	Recovery	=	108.620%	
35) Dibromofluoromethane	5.385	113	59783	48.843	ug/l	0.00
Spiked Amount	50.000	Range 75 - 124	Recovery	=	97.680%	
50) Toluene-d8	8.647	98	216013	52.164	ug/l	0.00
Spiked Amount	50.000	Range 86 - 113	Recovery	=	104.320%	
62) 4-Bromofluorobenzene	11.079	95	90150	54.058	ug/l	0.00
Spiked Amount	50.000	Range 77 - 121	Recovery	=	108.120%	
Target Compounds						
						Qvalue
9) 1,1,2-Trichlorotrifluo...	2.331	101	455	0.474	ug/l #	84
11) Tert butyl alcohol	2.947	59	2939	9.155	ug/l #	71
12) 1,1-Dichloroethene	2.319	96	226	0.246	ug/l #	60
13) Acrolein	2.221	56	23	0.544	ug/l #	1
16) Acetone	2.380	43	1001	1.489	ug/l #	79
19) Methyl tert-butyl Ether	3.123	73	797	0.228	ug/l #	67
20) Methylene Chloride	2.782	84	245	0.229	ug/l #	65
24) 1,1-Dichloroethane	3.611	63	919	0.498	ug/l #	81
25) 2-Butanone	4.556	43	616	0.711	ug/l #	78
26) 2,2-Dichloropropane	4.562	77	1756	0.941	ug/l #	54
31) Cyclohexane	5.550	56	2224	1.573	ug/l #	22
36) 1,1-Dichloropropene	5.544	75	7881	5.240	ug/l #	48
38) Carbon Tetrachloride	5.550	117	9525	4.916	ug/l #	17
44) Trichloroethene	7.135	130	4376	3.604	ug/l	100
51) 4-Methyl-2-Pentanone	8.653	43	1038	0.535	ug/l #	1
64) Tetrachloroethene	9.281	164	285	0.234	ug/l	91
76) 1,2,3-Trichloropropane	11.079	75	49887	26.588	ug/l #	33
81) trans-1,4-Dichloro-2-b...	11.079	75	49887	63.348	ug/l #	7
95) Naphthalene	13.780	128	3783	0.615	ug/l	98

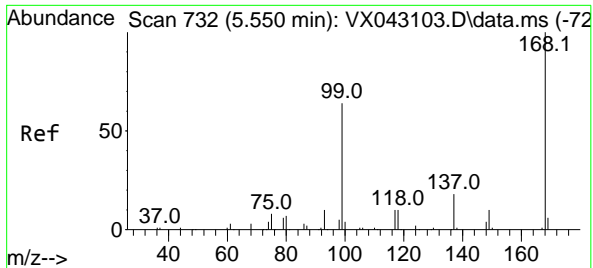
(#) = qualifier out of range (m) = manual integration (+) = signals summed

Data Path : Z:\voasrv\HPCHEM1\MSVOA_X\Data\VX092524\
 Data File : VX043155.D
 Acq On : 25 Sep 2024 15:58
 Operator : JC/MD
 Sample : P4164-18
 Misc : 5.0mL/MSVOA_X/WATER
 ALS Vial : 21 Sample Multiplier: 1

Instrument :
 MSVOA_X
 ClientSampleId :

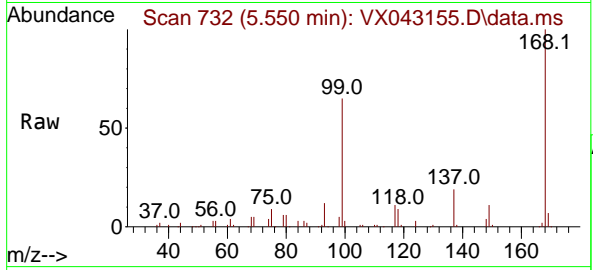
Quant Time: Sep 26 01:37:15 2024
 Quant Method : Z:\voasrv\HPCHEM1\MSVOA_X\Method\82X092324W.M
 Quant Title : SW846 8260
 QLast Update : Tue Sep 24 03:13:52 2024
 Response via : Initial Calibration



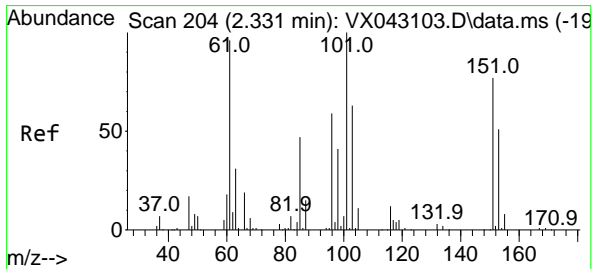
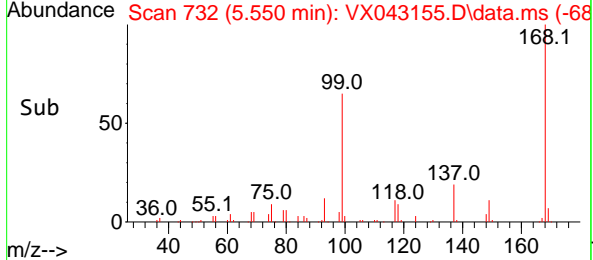
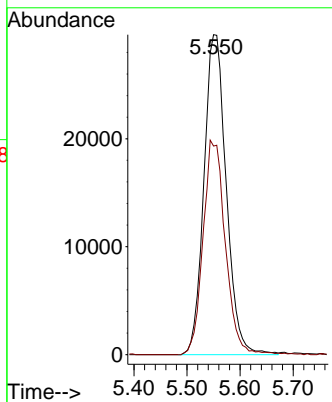


#1
 Pentafluorobenzene
 Concen: 50.000 ug/l
 RT: 5.550 min Scan# 71
 Delta R.T. -0.000 min
 Lab File: VX043155.D
 Acq: 25 Sep 2024 15:58

Instrument : MSVOA_X
 ClientSampleId :

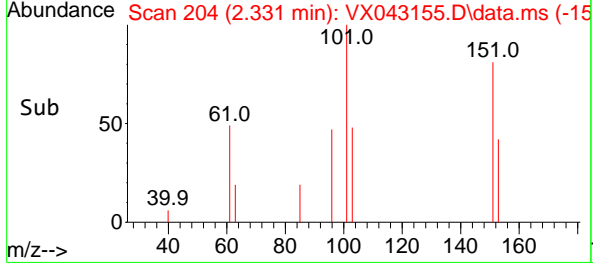
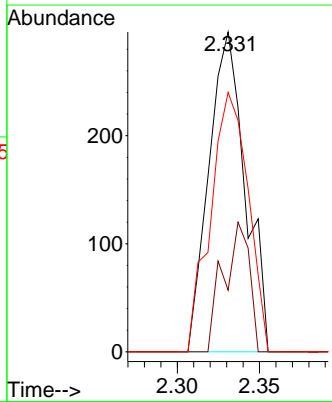
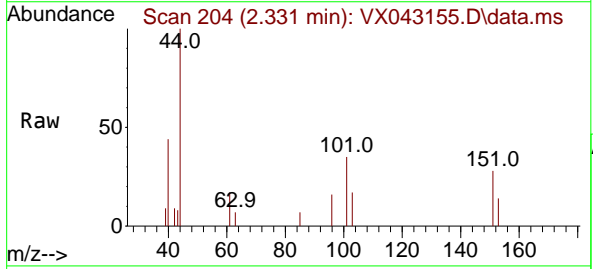


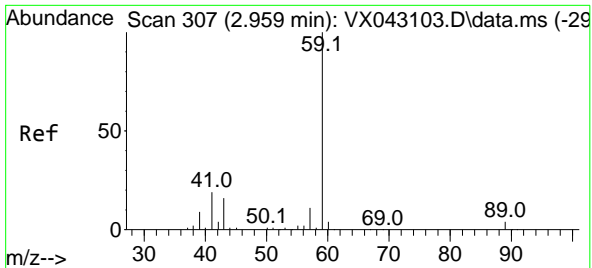
Tgt Ion:168 Resp: 86560
 Ion Ratio Lower Upper
 168 100
 99 65.2 50.8 76.2



#9
 1,1,2-Trichlorotrifluoroethane
 Concen: 0.474 ug/l
 RT: 2.331 min Scan# 204
 Delta R.T. -0.000 min
 Lab File: VX043155.D
 Acq: 25 Sep 2024 15:58

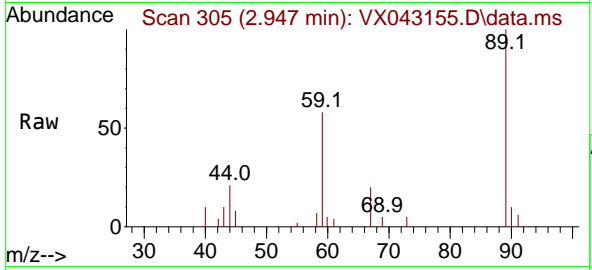
Tgt Ion:101 Resp: 455
 Ion Ratio Lower Upper
 101 100
 85 28.8 37.0 55.4#
 151 84.2 60.2 90.4



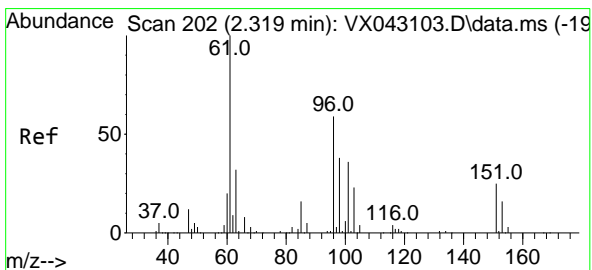
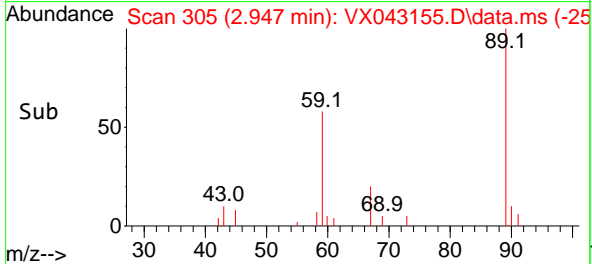
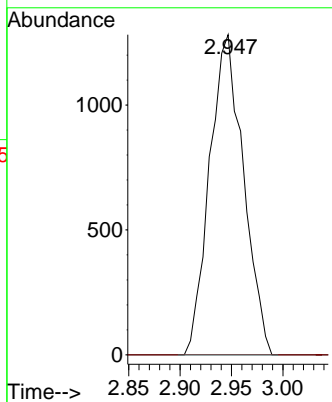


#11
 Tert butyl alcohol
 Concen: 9.155 ug/l
 RT: 2.947 min Scan# 305
 Delta R.T. -0.012 min
 Lab File: VX043155.D
 Acq: 25 Sep 2024 15:58

Instrument : MSVOA_X
 ClientSampleId :

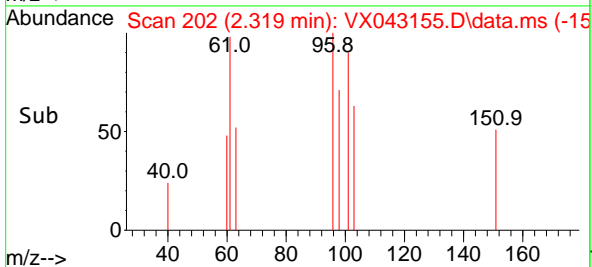
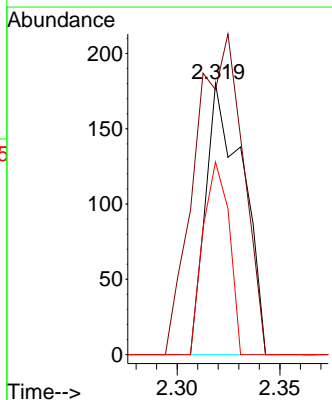
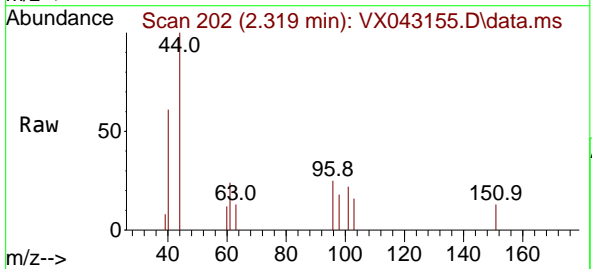


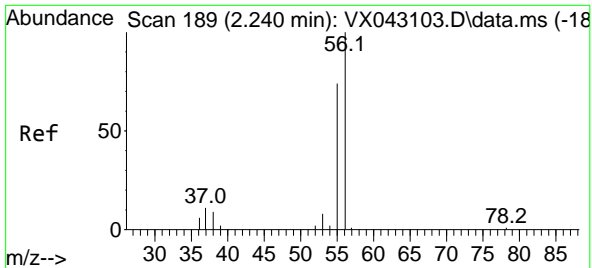
Tgt Ion: 59 Resp: 2939
 Ion Ratio Lower Upper
 59 100
 57 0.0 8.6 13.0#



#12
 1,1-Dichloroethene
 Concen: 0.246 ug/l
 RT: 2.319 min Scan# 202
 Delta R.T. -0.000 min
 Lab File: VX043155.D
 Acq: 25 Sep 2024 15:58

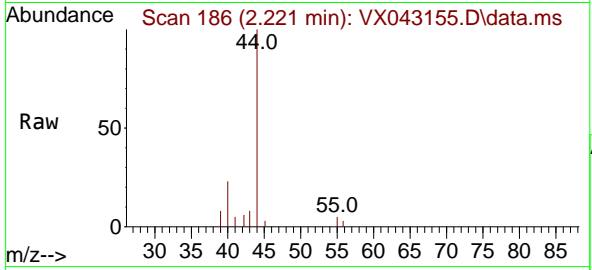
Tgt Ion: 96 Resp: 226
 Ion Ratio Lower Upper
 96 100
 61 97.8 134.7 202.1#
 98 71.1 51.6 77.4



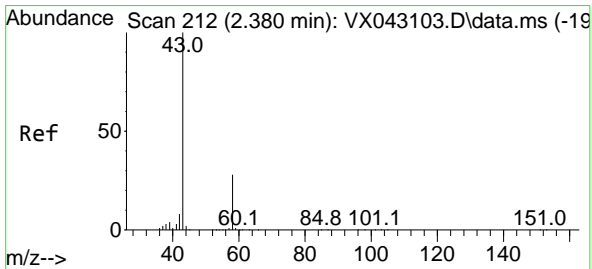
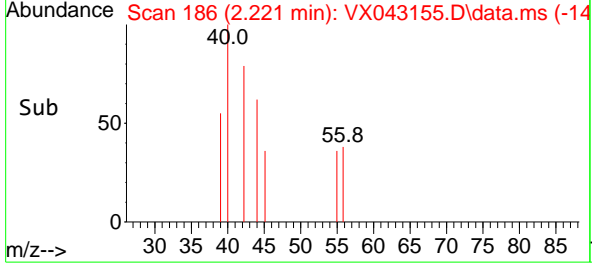
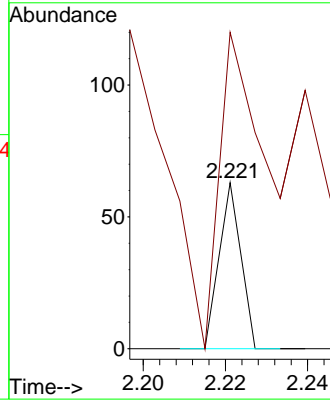


#13
 Acrolein
 Concen: 0.544 ug/l
 RT: 2.221 min Scan# 186
 Delta R.T. -0.018 min
 Lab File: VX043155.D
 Acq: 25 Sep 2024 15:58

Instrument : MSVOA_X
 ClientSampleId :

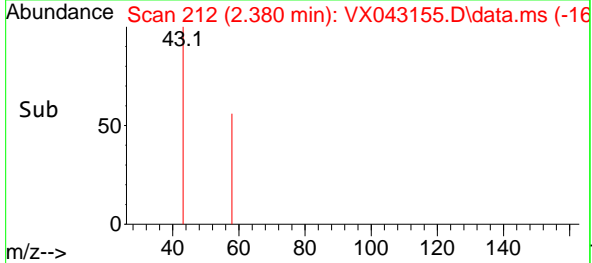
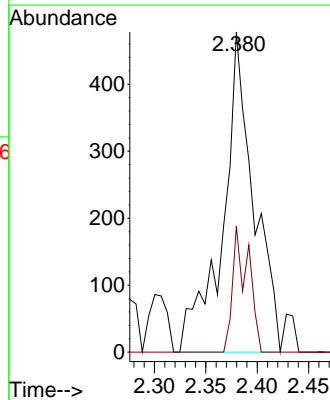
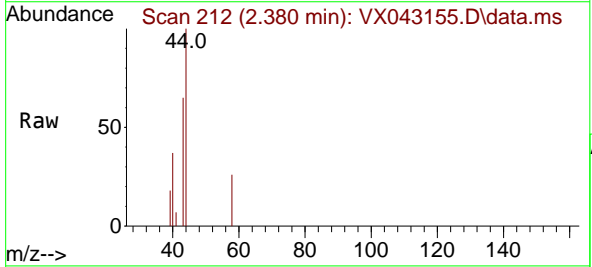


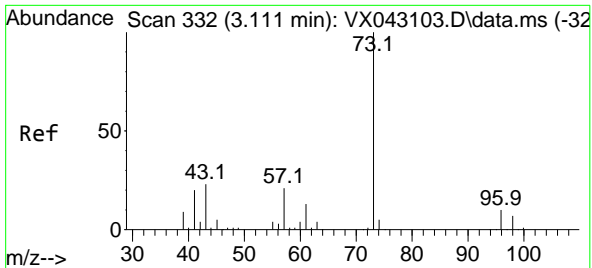
Tgt Ion: 56 Resp: 23
 Ion Ratio Lower Upper
 56 100
 55 656.5 55.8 83.6#



#16
 Acetone
 Concen: 1.489 ug/l
 RT: 2.380 min Scan# 212
 Delta R.T. -0.000 min
 Lab File: VX043155.D
 Acq: 25 Sep 2024 15:58

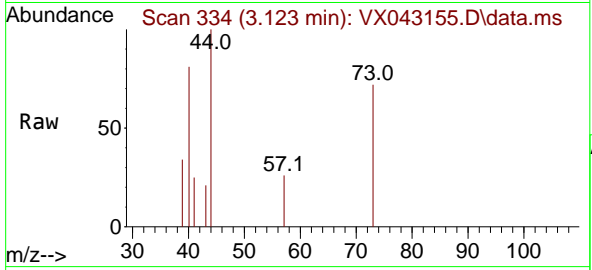
Tgt Ion: 43 Resp: 1001
 Ion Ratio Lower Upper
 43 100
 58 39.3 22.6 34.0#



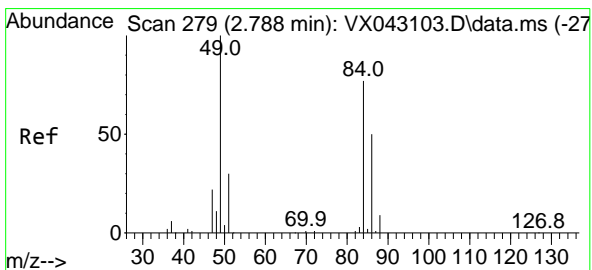
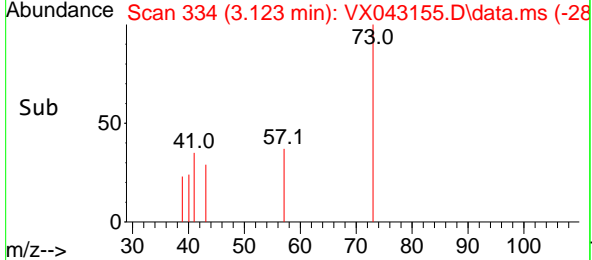
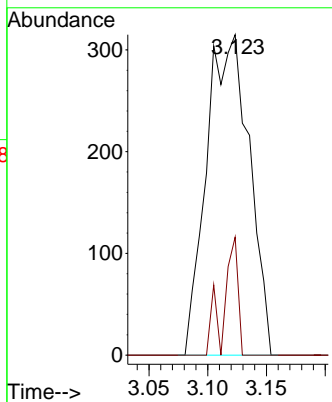


#19
 Methyl tert-butyl Ether
 Concen: 0.228 ug/l
 RT: 3.123 min Scan# 31
 Delta R.T. 0.012 min
 Lab File: VX043155.D
 Acq: 25 Sep 2024 15:58

Instrument : MSVOA_X
 ClientSampleId :

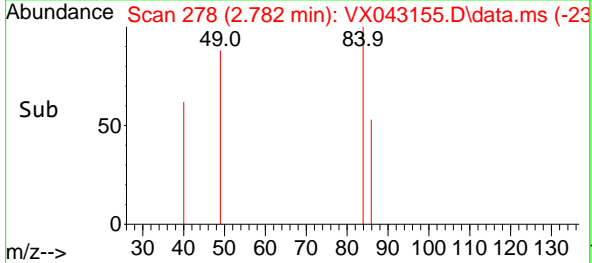
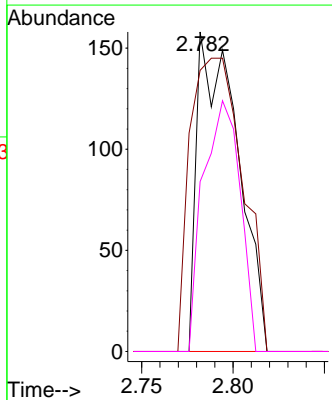
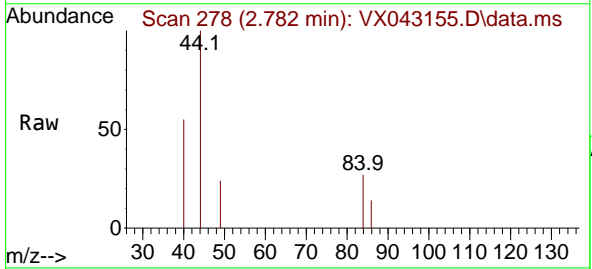


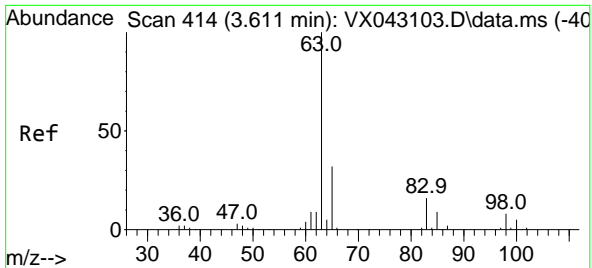
Tgt Ion: 73 Resp: 797
 Ion Ratio Lower Upper
 73 100
 57 36.8 17.0 25.4#



#20
 Methylene Chloride
 Concen: 0.229 ug/l
 RT: 2.782 min Scan# 278
 Delta R.T. -0.006 min
 Lab File: VX043155.D
 Acq: 25 Sep 2024 15:58

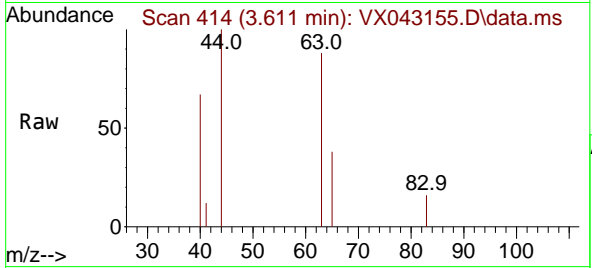
Tgt Ion: 84 Resp: 245
 Ion Ratio Lower Upper
 84 100
 49 88.0 104.1 156.1#
 51 0.0 31.1 46.7#
 86 53.2 52.1 78.1



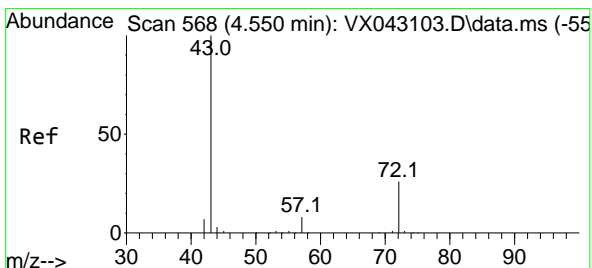
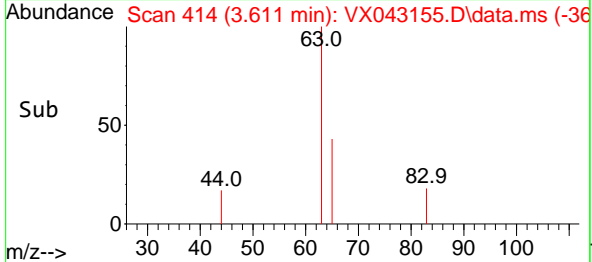
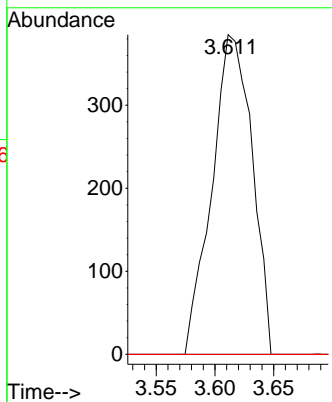


#24
 1,1-Dichloroethane
 Concen: 0.498 ug/l
 RT: 3.611 min Scan# 411
 Delta R.T. -0.000 min
 Lab File: VX043155.D
 Acq: 25 Sep 2024 15:58

Instrument : MSVOA_X
 ClientSampleId :

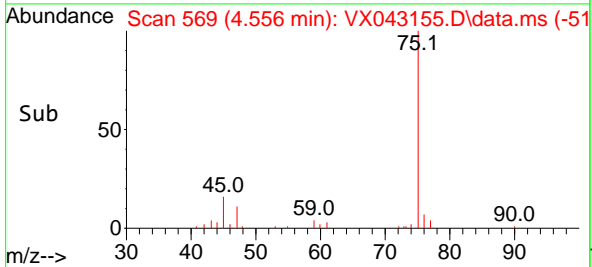
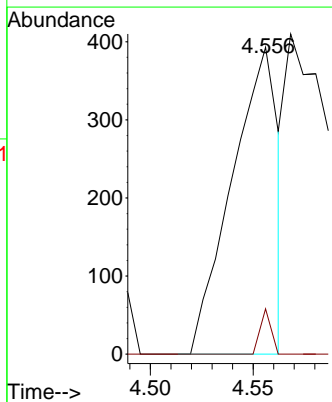
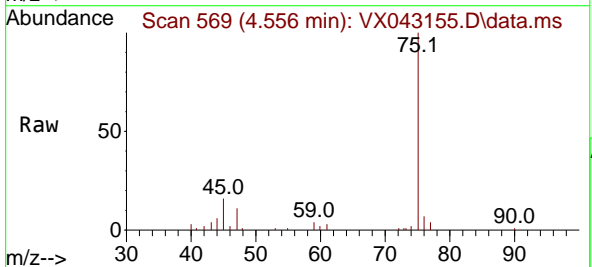


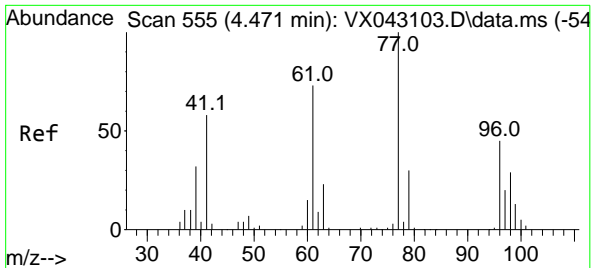
Tgt Ion	Resp	Lower	Upper
63	100		
98	0.0	3.9	11.5#
100	0.0	2.5	7.6#



#25
 2-Butanone
 Concen: 0.711 ug/l
 RT: 4.556 min Scan# 569
 Delta R.T. 0.006 min
 Lab File: VX043155.D
 Acq: 25 Sep 2024 15:58

Tgt Ion	Resp	Lower	Upper
43	100		
72	14.8	20.7	31.1#

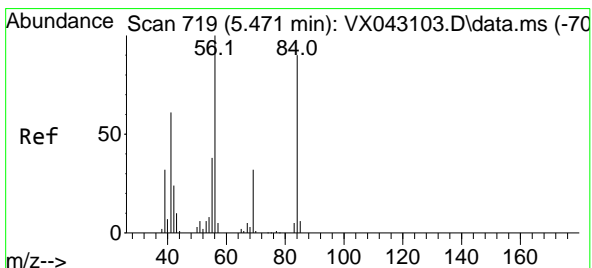
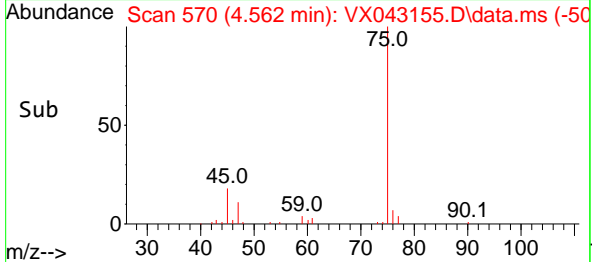
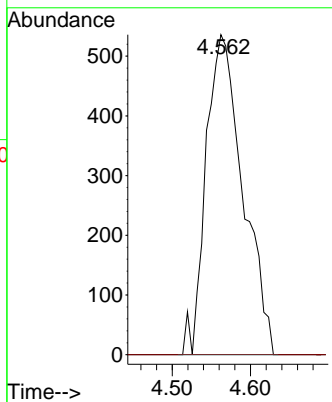
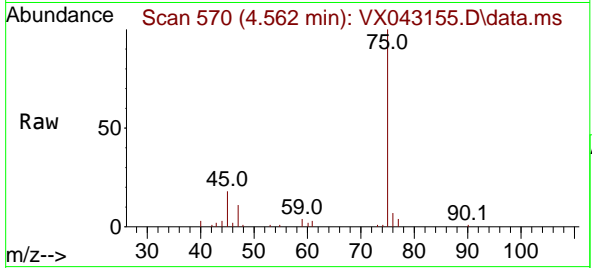




#26
 2,2-Dichloropropane
 Concen: 0.941 ug/l
 RT: 4.562 min Scan# 51
 Delta R.T. 0.091 min
 Lab File: VX043155.D
 Acq: 25 Sep 2024 15:58

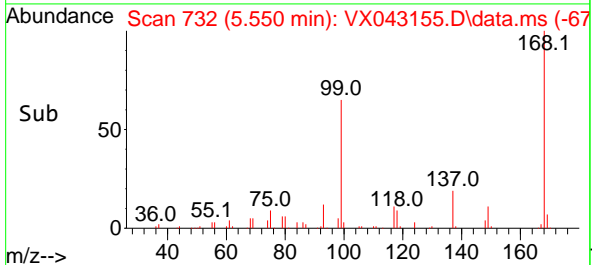
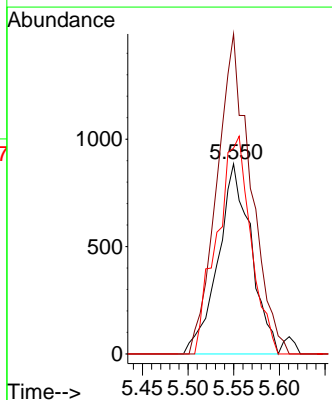
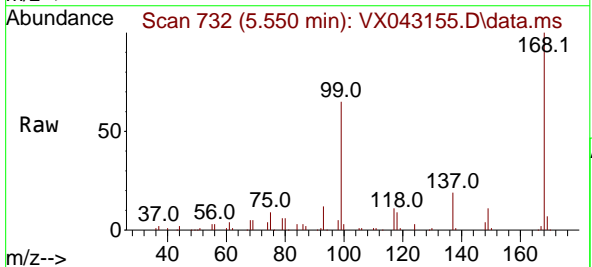
Instrument :
 MSVOA_X
 ClientSampleId :

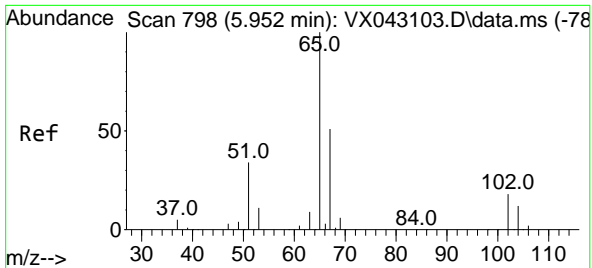
Tgt Ion: 77 Resp: 1756
 Ion Ratio Lower Upper
 77 100
 97 0.0 10.8 32.3#



#31
 Cyclohexane
 Concen: 1.573 ug/l
 RT: 5.550 min Scan# 732
 Delta R.T. 0.079 min
 Lab File: VX043155.D
 Acq: 25 Sep 2024 15:58

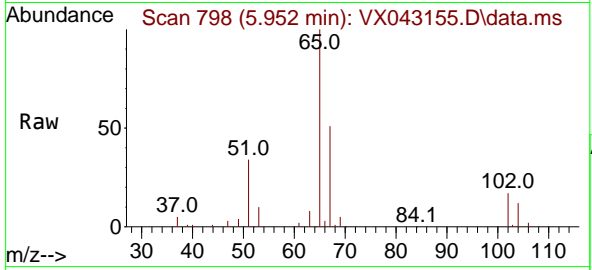
Tgt Ion: 56 Resp: 2224
 Ion Ratio Lower Upper
 56 100
 69 168.4 25.8 38.6#
 84 108.2 72.4 108.6



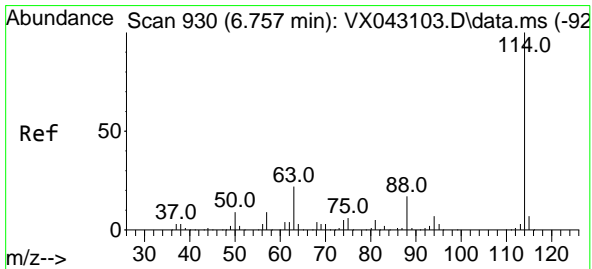
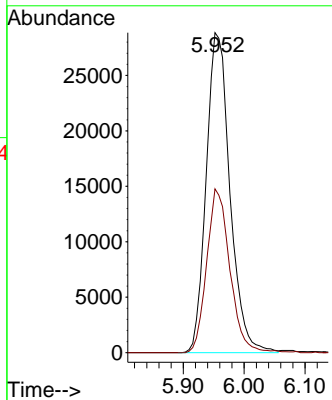
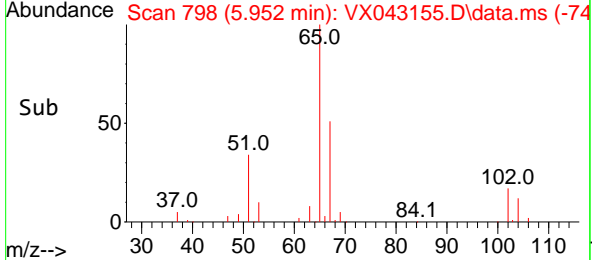


#33
 1,2-Dichloroethane-d4
 Concen: 54.313 ug/l
 RT: 5.952 min Scan# 798
 Delta R.T. -0.000 min
 Lab File: VX043155.D
 Acq: 25 Sep 2024 15:58

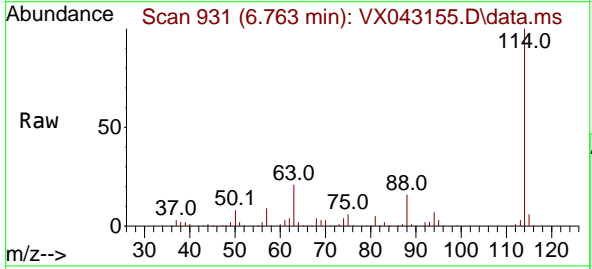
Instrument : MSVOA_X
 ClientSampleId :



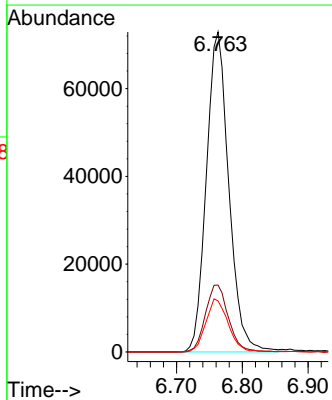
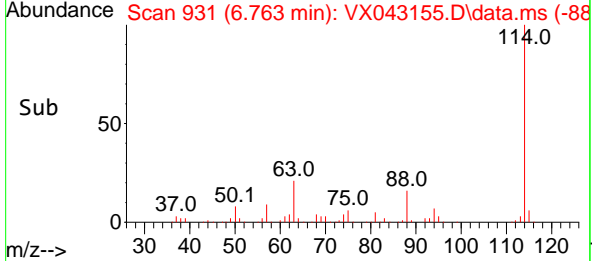
Tgt Ion: 65 Resp: 78092
 Ion Ratio Lower Upper
 65 100
 67 50.1 0.0 99.0

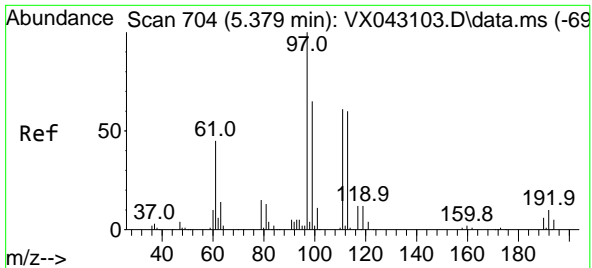


#34
 1,4-Difluorobenzene
 Concen: 50.000 ug/l
 RT: 6.763 min Scan# 931
 Delta R.T. 0.006 min
 Lab File: VX043155.D
 Acq: 25 Sep 2024 15:58



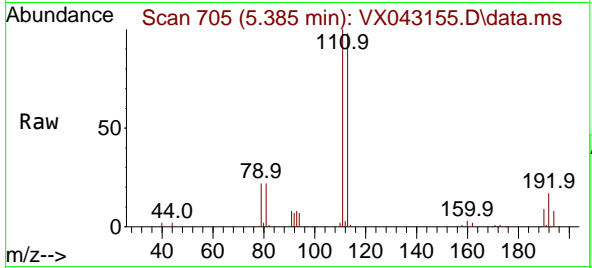
Tgt Ion: 114 Resp: 173508
 Ion Ratio Lower Upper
 114 100
 63 20.9 0.0 43.2
 88 15.9 0.0 33.4



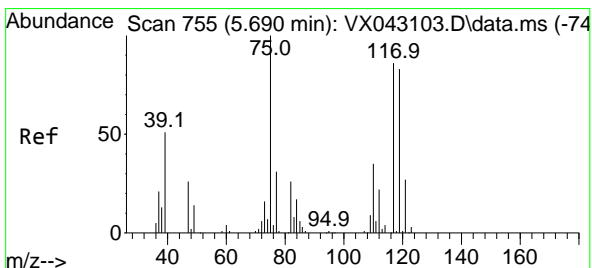
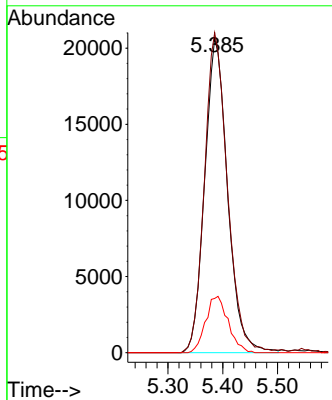
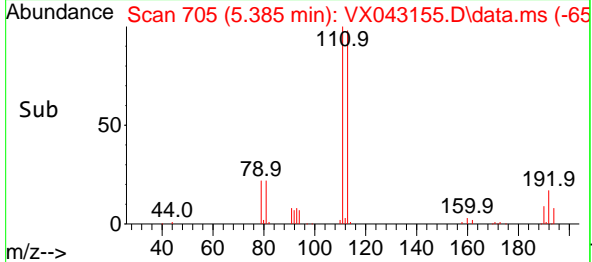


#35
 Dibromofluoromethane
 Concen: 48.843 ug/l
 RT: 5.385 min Scan# 705
 Delta R.T. 0.006 min
 Lab File: VX043155.D
 Acq: 25 Sep 2024 15:58

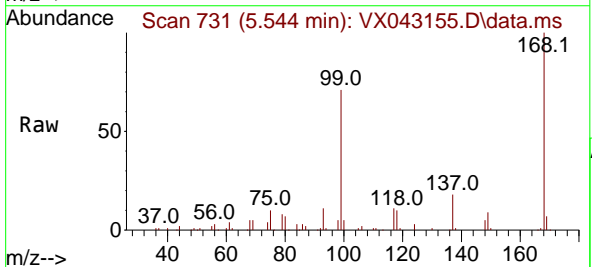
Instrument : MSVOA_X
 ClientSampleId :



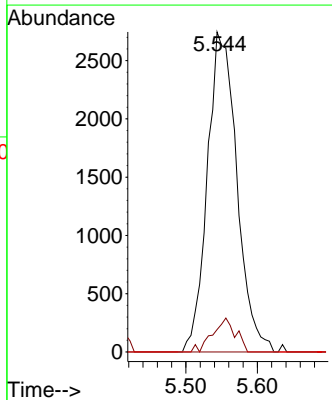
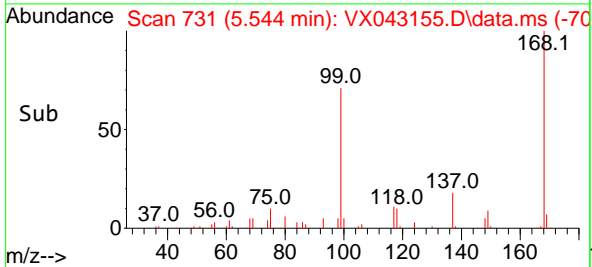
Tgt Ion:113 Resp: 59783
 Ion Ratio Lower Upper
 113 100
 111 102.0 82.6 124.0
 192 17.7 14.6 22.0

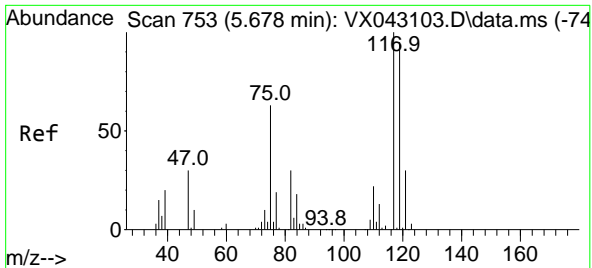


#36
 1,1-Dichloropropene
 Concen: 5.240 ug/l
 RT: 5.544 min Scan# 731
 Delta R.T. -0.146 min
 Lab File: VX043155.D
 Acq: 25 Sep 2024 15:58



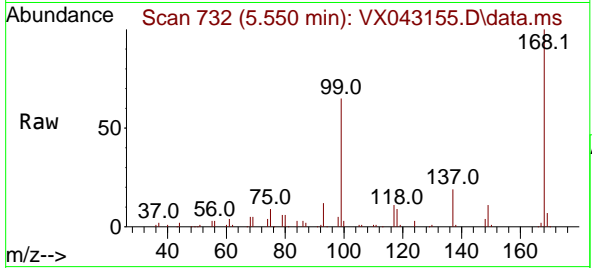
Tgt Ion: 75 Resp: 7881
 Ion Ratio Lower Upper
 75 100
 110 8.2 17.8 53.4#
 77 0.0 25.2 37.8#



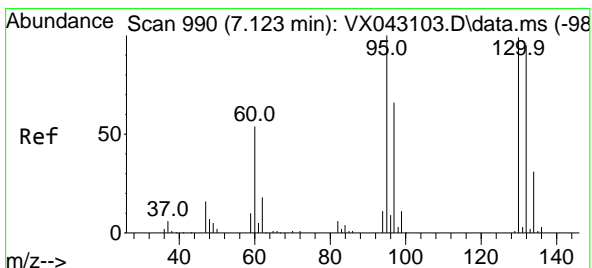
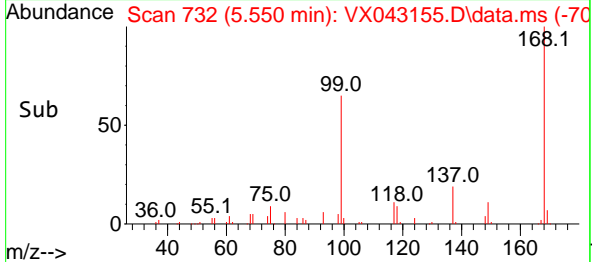
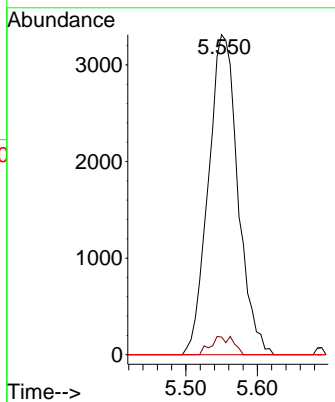


#38
 Carbon Tetrachloride
 Concen: 4.916 ug/l
 RT: 5.550 min Scan# 71
 Delta R.T. -0.128 min
 Lab File: VX043155.D
 Acq: 25 Sep 2024 15:58

Instrument :
 MSVOA_X
 ClientSampleId :

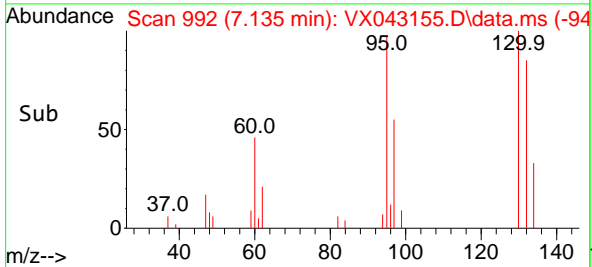
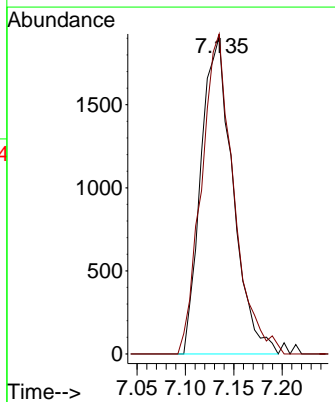
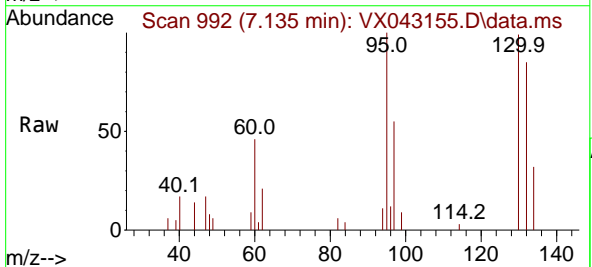


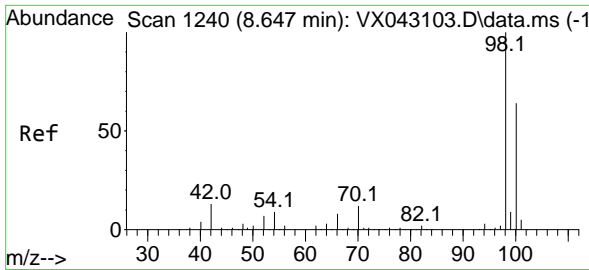
Tgt Ion:117 Resp: 9525
 Ion Ratio Lower Upper
 117 100
 119 5.5 75.5 113.3#
 121 0.0 24.2 36.2#



#44
 Trichloroethene
 Concen: 3.604 ug/l
 RT: 7.135 min Scan# 992
 Delta R.T. 0.012 min
 Lab File: VX043155.D
 Acq: 25 Sep 2024 15:58

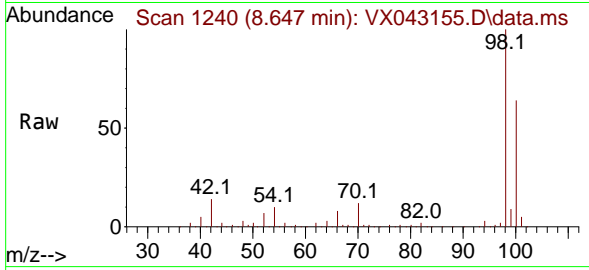
Tgt Ion:130 Resp: 4376
 Ion Ratio Lower Upper
 130 100
 95 100.8 0.0 201.6



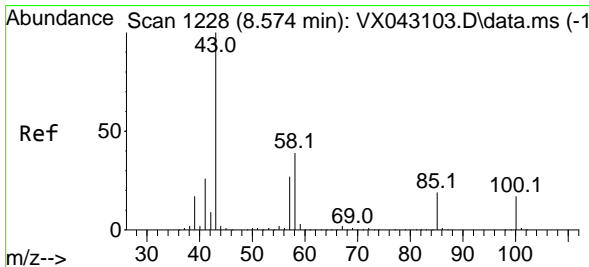
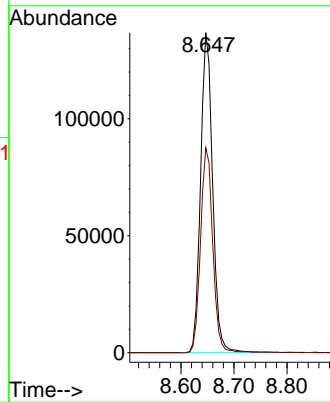
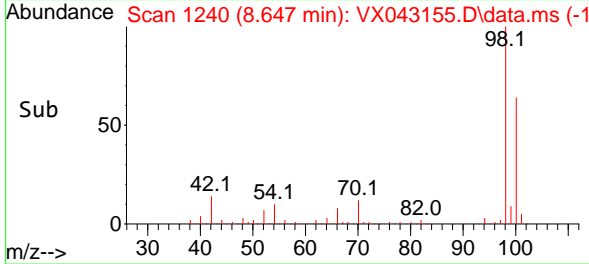


#50
 Toluene-d8
 Concen: 52.164 ug/l
 RT: 8.647 min Scan# 11
 Delta R.T. -0.000 min
 Lab File: VX043155.D
 Acq: 25 Sep 2024 15:58

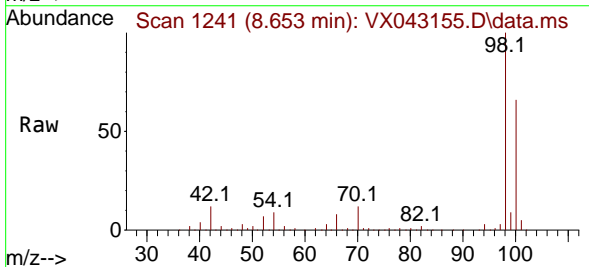
Instrument :
 MSVOA_X
 ClientSampleId :



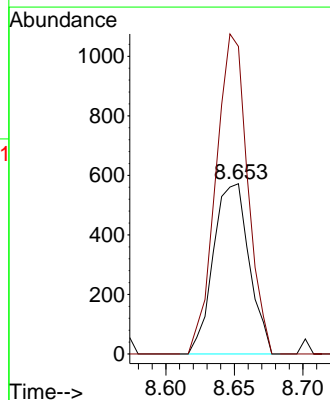
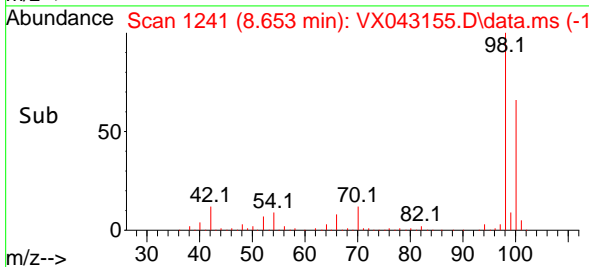
Tgt Ion: 98 Resp: 216013
 Ion Ratio Lower Upper
 98 100
 100 65.1 52.2 78.4

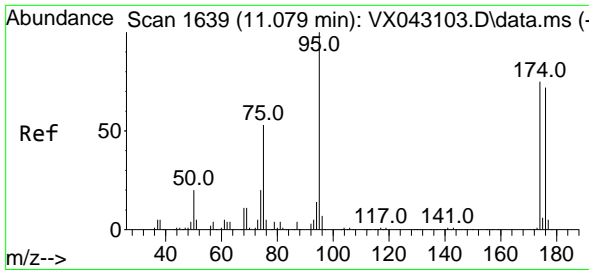


#51
 4-Methyl-2-Pentanone
 Concen: 0.535 ug/l
 RT: 8.653 min Scan# 1241
 Delta R.T. 0.079 min
 Lab File: VX043155.D
 Acq: 25 Sep 2024 15:58



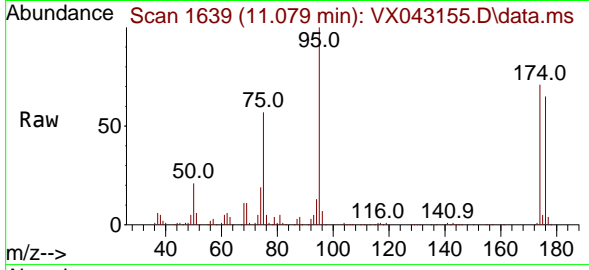
Tgt Ion: 43 Resp: 1038
 Ion Ratio Lower Upper
 43 100
 58 167.5 30.3 45.5#



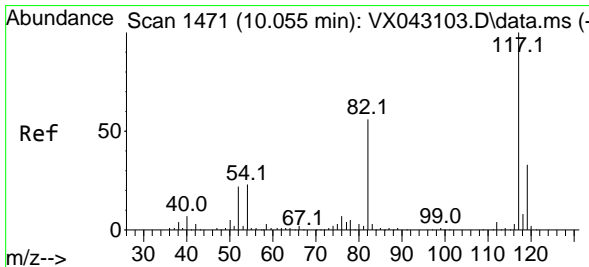
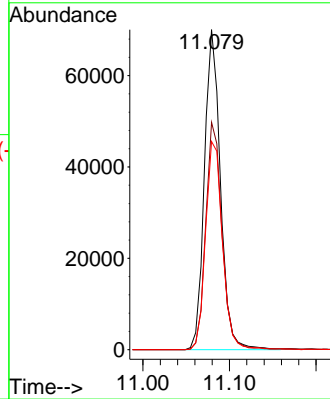
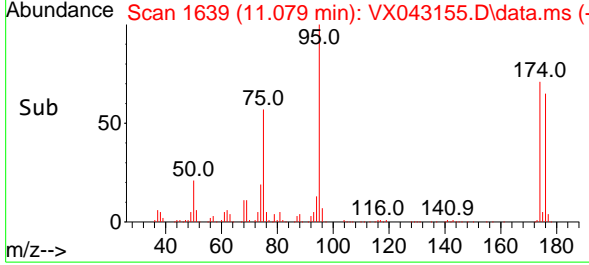


#62
 4-Bromofluorobenzene
 Concen: 54.058 ug/l
 RT: 11.079 min Scan# 1
 Delta R.T. -0.000 min
 Lab File: VX043155.D
 Acq: 25 Sep 2024 15:58

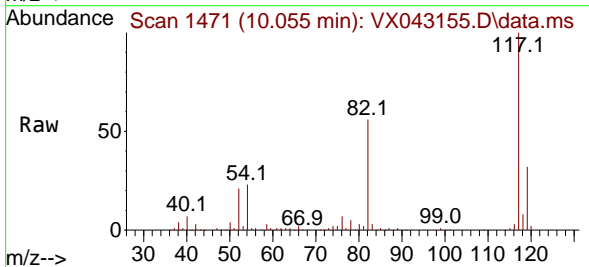
Instrument :
 MSVOA_X
 ClientSampleId :



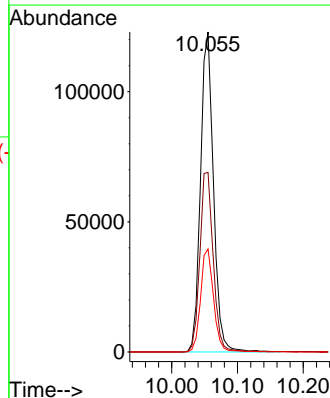
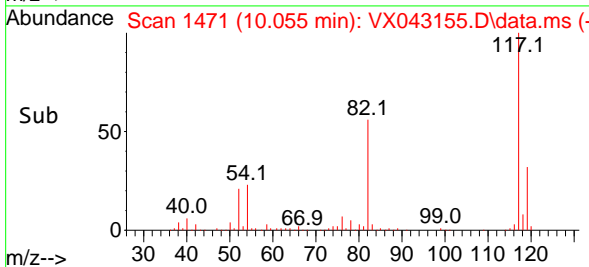
Tgt Ion: 95 Resp: 90150
 Ion Ratio Lower Upper
 95 100
 174 72.4 0.0 146.0
 176 68.6 0.0 142.6

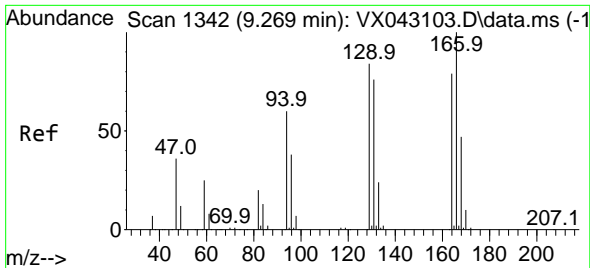


#63
 Chlorobenzene-d5
 Concen: 50.000 ug/l
 RT: 10.055 min Scan# 1471
 Delta R.T. -0.000 min
 Lab File: VX043155.D
 Acq: 25 Sep 2024 15:58



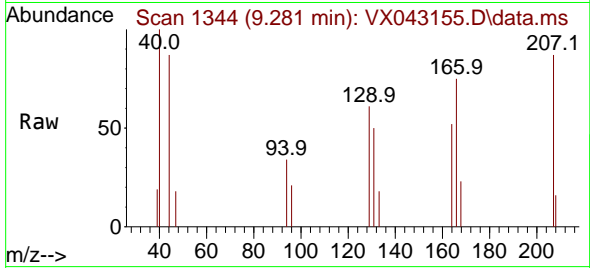
Tgt Ion: 117 Resp: 168389
 Ion Ratio Lower Upper
 117 100
 82 56.1 44.7 67.1
 119 32.2 26.3 39.5



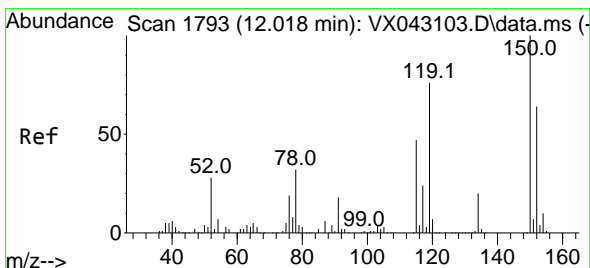
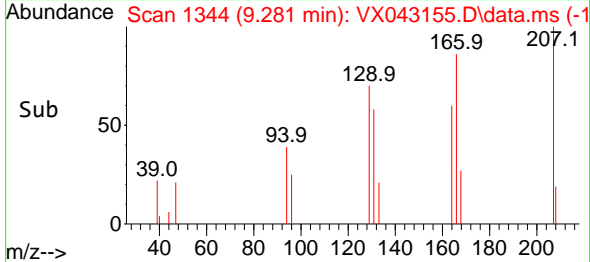
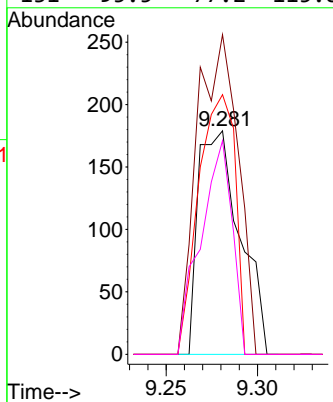


#64
 Tetrachloroethene
 Concen: 0.234 ug/l
 RT: 9.281 min Scan# 11
 Delta R.T. 0.012 min
 Lab File: VX043155.D
 Acq: 25 Sep 2024 15:58

Instrument :
 MSVOA_X
 ClientSampleId :

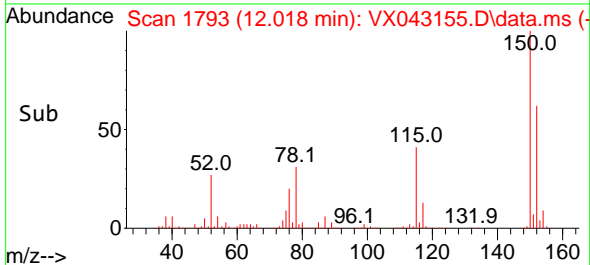
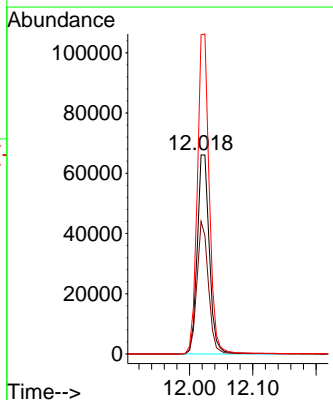
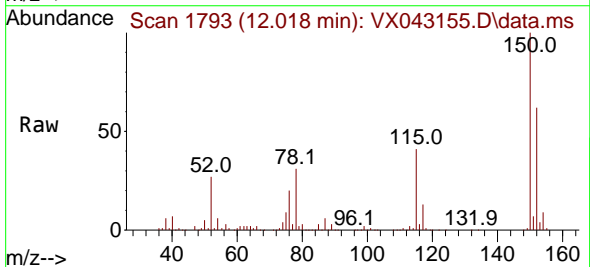


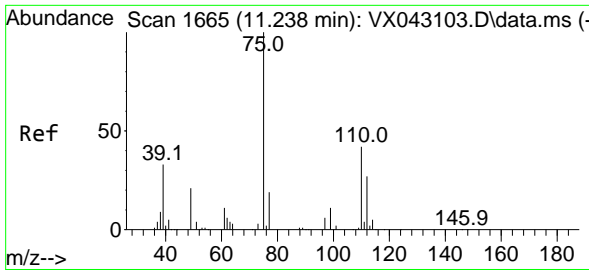
Tgt Ion:164 Resp: 285
 Ion Ratio Lower Upper
 164 100
 166 143.0 101.2 151.8
 129 116.2 84.7 127.1
 131 95.5 77.2 115.8



#72
 1,4-Dichlorobenzene-d4
 Concen: 50.000 ug/l
 RT: 12.018 min Scan# 1793
 Delta R.T. -0.000 min
 Lab File: VX043155.D
 Acq: 25 Sep 2024 15:58

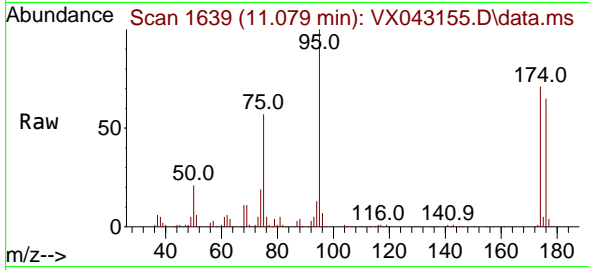
Tgt Ion:152 Resp: 88253
 Ion Ratio Lower Upper
 152 100
 115 63.2 43.7 131.1
 150 158.5 0.0 344.6



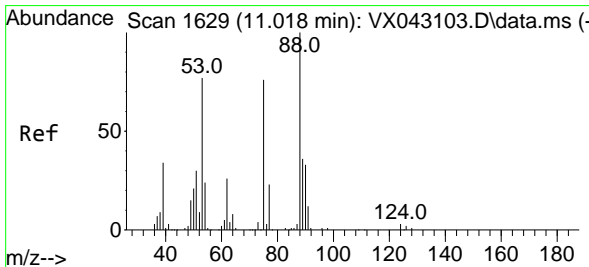
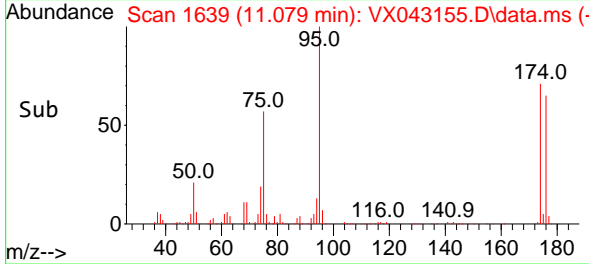
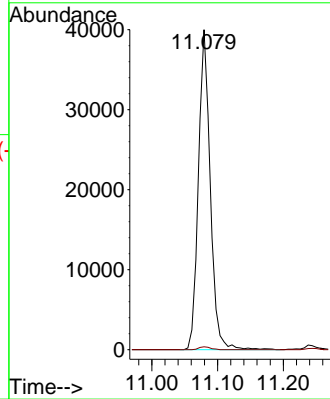


#76
 1,2,3-Trichloropropane
 Concen: 26.588 ug/l
 RT: 11.079 min Scan# 1639
 Delta R.T. -0.159 min
 Lab File: VX043155.D
 Acq: 25 Sep 2024 15:58

Instrument : MSVOA_X
 ClientSampleId :

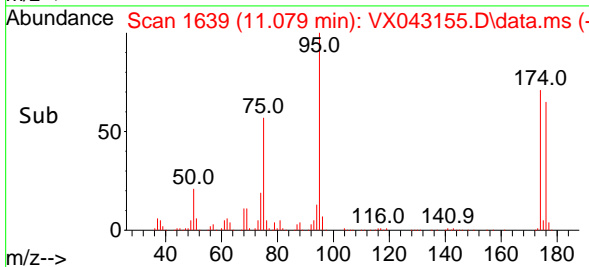
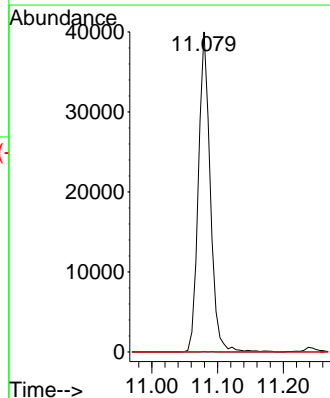
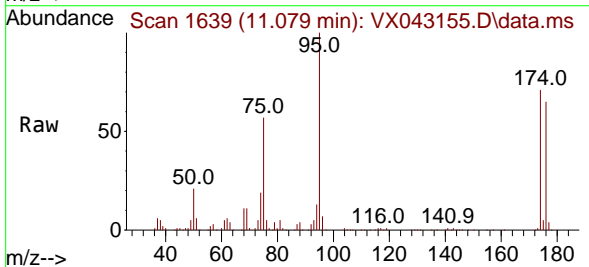


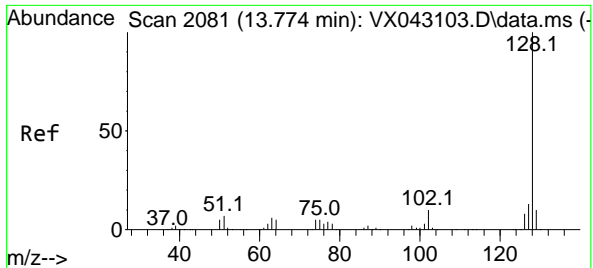
Tgt Ion: 75 Resp: 49887
 Ion Ratio Lower Upper
 75 100
 77 0.9 21.9 65.7#



#81
 trans-1,4-Dichloro-2-butene
 Concen: 63.348 ug/l
 RT: 11.079 min Scan# 1639
 Delta R.T. 0.061 min
 Lab File: VX043155.D
 Acq: 25 Sep 2024 15:58

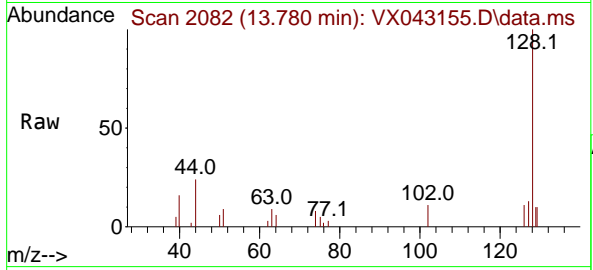
Tgt Ion: 75 Resp: 49887
 Ion Ratio Lower Upper
 75 100
 53 0.0 85.4 128.2#
 89 0.1 38.8 58.2#





#95
 Naphthalene
 Concen: 0.615 ug/l
 RT: 13.780 min Scan# 20
 Delta R.T. 0.006 min
 Lab File: VX043155.D
 Acq: 25 Sep 2024 15:58

Instrument : MSVOA_X
 ClientSampleId :



Tgt Ion:128 Resp: 3783

Ion	Ratio	Lower	Upper
128	100		
127	11.6	10.2	15.4
129	11.4	8.6	13.0

