

Data Path : Z:\VOASRV\HPCHEM1\MSVOA X\DATA\VX092618\
 Data File : VX004746.D
 Acq On : 27 Sep 2018 01:58
 Operator : JC/MD
 Sample : J5029-02
 Misc : 5.0mL/MSVOA X/WATER
 ALS Vial : 29 Sample Multiplier: 1

Instrument :
 MSVOA_X
 ClientSampleId :
 DUP-092018-02

Integration Parameters: RTEINT.P

Integrator: RTE
 Smoothing : ON
 Sampling : 1
 Start Thrs: 0.2
 Stop Thrs : 0

Filtering: 5
 Min Area: 3 % of largest Peak
 Max Peaks: 100
 Peak Location: TOP

If leading or trailing edge < 100 prefer < Baseline drop else tangent >
 Peak separation: 5

Method : Z:\VOASRV\HPCHEM1\MSVOA_X\METHOD\82X092618W.M
 Title : SW846 8260

Signal : TIC

peak #	R.T. min	first scan	max scan	last scan	PK TY	peak height	corr. area	corr. % max.	% of total
1	1.629	66	78	85	rBV4	18594	59000	1.90%	0.219%
2	2.446	207	212	219	rVB	57334	95059	3.06%	0.353%
3	2.623	235	241	252	rVB	39148	71544	2.31%	0.266%
4	3.074	306	315	323	rBV2	25424	56767	1.83%	0.211%
5	3.202	324	336	347	rVB	73772	203700	6.57%	0.756%
6	4.397	522	532	544	rVB2	23551	70904	2.29%	0.263%
7	5.507	702	714	721	rBV	218825	611099	19.70%	2.268%
8	5.659	731	739	754	rVB2	273963	756088	24.37%	2.806%
9	6.068	795	806	825	rBV2	217838	574934	18.53%	2.134%
10	6.293	828	843	849	rBV6	9840	41083	1.32%	0.152%
11	6.860	924	936	961	rBV	397535	1021690	32.93%	3.792%
12	7.458	1024	1034	1048	rBV2	45354	119642	3.86%	0.444%
13	8.214	1146	1158	1163	rBV	28023	61893	1.99%	0.230%
14	8.573	1211	1217	1226	rVB2	26153	51388	1.66%	0.191%
15	8.720	1234	1241	1258	rBV	892056	1556639	50.17%	5.777%
16	9.226	1319	1324	1333	rVB	19452	33408	1.08%	0.124%
17	10.116	1460	1470	1480	rBV	827828	1219428	39.31%	4.526%
18	10.360	1498	1510	1516	rVB2	24034	52907	1.71%	0.196%
19	11.140	1632	1638	1654	rBV	856157	1124125	36.23%	4.172%
20	11.670	1720	1725	1734	rVB	29256	49162	1.58%	0.182%
21	11.768	1734	1741	1745	rBV	24395	39897	1.29%	0.148%
22	11.920	1761	1766	1769	rBV	54566	72452	2.34%	0.269%
23	12.079	1786	1792	1800	rBV	1102900	1367603	44.08%	5.076%
24	12.231	1813	1817	1822	rBV	62809	76945	2.48%	0.286%
25	12.298	1822	1828	1836	rBV	1323277	1694035	54.60%	6.287%
26	12.371	1836	1840	1847	rVB2	87960	137055	4.42%	0.509%
27	12.463	1848	1855	1861	rBV	170590	225367	7.26%	0.836%
28	12.670	1881	1889	1892	rBV	1253263	1485555	47.88%	5.514%
29	12.701	1892	1894	1899	rVV	354627	417906	13.47%	1.551%
30	12.755	1899	1903	1910	rVV2	1129105	1585352	51.10%	5.884%
31	12.816	1910	1913	1918	rVV	30359	41751	1.35%	0.155%
32	12.896	1919	1926	1931	rVB	109280	147850	4.77%	0.549%
33	12.975	1932	1939	1945	rBV	979033	1243116	40.07%	4.614%
34	13.085	1952	1957	1963	rBV2	83845	132750	4.28%	0.493%

Data Path : Z:\VOASRV\HPCHEM1\MSVOA X\DATA\VX092618\
 Data File : VX004746.D
 Acq On : 27 Sep 2018 01:58
 Operator : JC/MD
 Sample : J5029-02
 Misc : 5.0mL/MSVOA X/WATER
 ALS Vial : 29 Sample Multiplier: 1

Instrument :
 MSVOA_X
 ClientSampleID :
 DUP-092018-02

Integration Parameters: RTEINT.P
 Integrator: RTE
 Smoothing : ON
 Sampling : 1
 Start Thrs: 0.2
 Stop Thrs : 0

Filtering: 5
 Min Area: 3 % of largest Peak
 Max Peaks: 100
 Peak Location: TOP

If leading or trailing edge < 100 prefer < Baseline drop else tangent >
 Peak separation: 5

Method : Z:\VOASRV\HPCHEM1\MSVOA_X\METHOD\82X092618W.M
 Title : SW846 8260

35	13.152	1964	1968	1971	rVV	46893	61835	1.99%	0.229%
36	13.194	1971	1975	1977	rVV2	120649	155665	5.02%	0.578%
37	13.225	1977	1980	1990	rVB	621517	803333	25.89%	2.982%
38	13.347	1995	2000	2006	rVV2	2232870	3102466	100.00%	11.515%
39	13.408	2006	2010	2011	rVV2	54058	73969	2.38%	0.275%
40	13.426	2011	2013	2018	rVV	67675	85309	2.75%	0.317%
41	13.481	2018	2022	2027	rVB	69926	92007	2.97%	0.341%
42	13.566	2027	2036	2038	rBV	73005	108316	3.49%	0.402%
43	13.603	2038	2042	2045	rVV	206161	278118	8.96%	1.032%
44	13.639	2045	2048	2052	rVV2	247008	360445	11.62%	1.338%
45	13.725	2052	2062	2071	rVB3	288333	762095	24.56%	2.828%
46	13.810	2071	2076	2079	rBV	40648	59824	1.93%	0.222%
47	13.853	2079	2083	2089	rVB	69933	88862	2.86%	0.330%
48	13.914	2089	2093	2097	rVB	115541	131786	4.25%	0.489%
49	13.987	2097	2105	2109	rBV2	203661	292641	9.43%	1.086%
50	14.030	2109	2112	2116	rVB	97270	113623	3.66%	0.422%
51	14.133	2124	2129	2132	rBV	153916	195295	6.29%	0.725%
52	14.164	2132	2134	2141	rVB	56189	62244	2.01%	0.231%
53	14.274	2147	2152	2162	rBV3	228885	475922	15.34%	1.766%
54	14.377	2165	2169	2174	rVV	96536	128006	4.13%	0.475%
55	14.432	2174	2178	2183	rVB2	177240	236890	7.64%	0.879%
56	14.542	2190	2196	2201	rBV2	242030	330660	10.66%	1.227%
57	14.664	2210	2216	2219	rBV3	37834	71751	2.31%	0.266%
58	14.731	2223	2227	2232	rVV2	43305	62822	2.02%	0.233%
59	14.780	2232	2235	2240	rVB3	22629	32798	1.06%	0.122%
60	14.847	2241	2246	2254	rBV3	69052	143856	4.64%	0.534%
61	15.249	2306	2312	2319	rBV3	39651	69688	2.25%	0.259%
62	15.444	2337	2344	2347	rBV	66345	103355	3.33%	0.384%
63	15.481	2347	2350	2354	rVB	68580	90715	2.92%	0.337%
64	15.548	2355	2361	2367	rBV	231940	374112	12.06%	1.388%
65	15.688	2375	2384	2397	rVB	517206	824197	26.57%	3.059%
66	15.810	2398	2404	2410	rVV3	21627	41930	1.35%	0.156%
67	15.913	2411	2421	2433	rVB	143153	377633	12.17%	1.402%
68	16.072	2441	2447	2456	rBV	82129	140150	4.52%	0.520%
69	16.419	2498	2504	2511	rVB	56146	113281	3.65%	0.420%

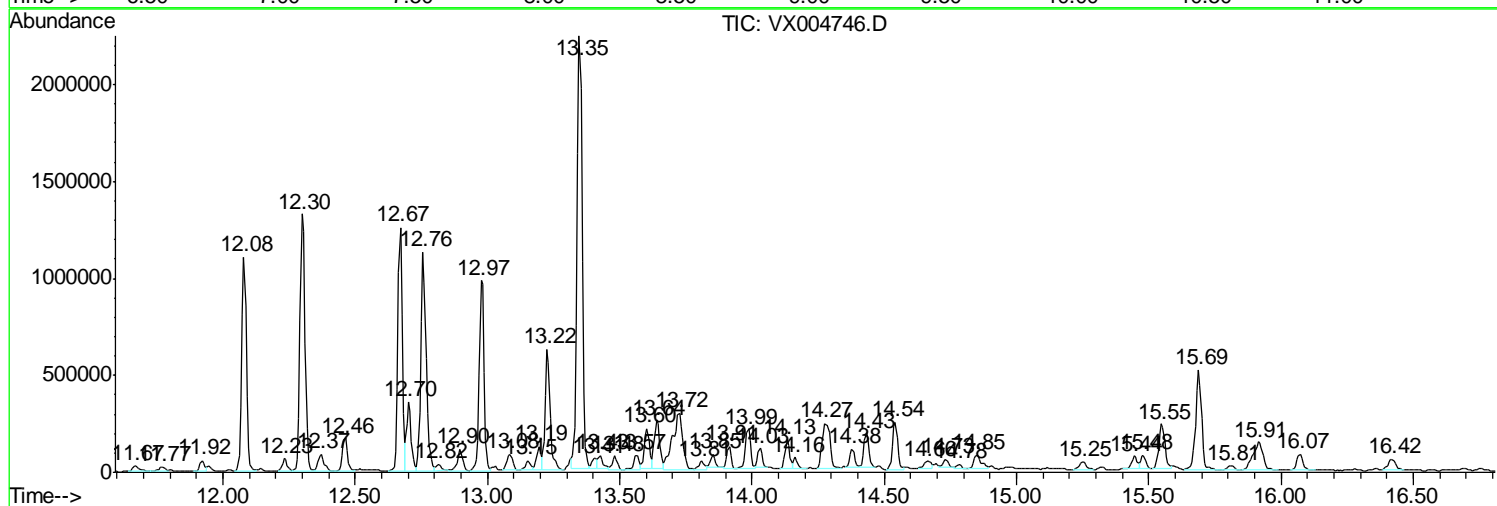
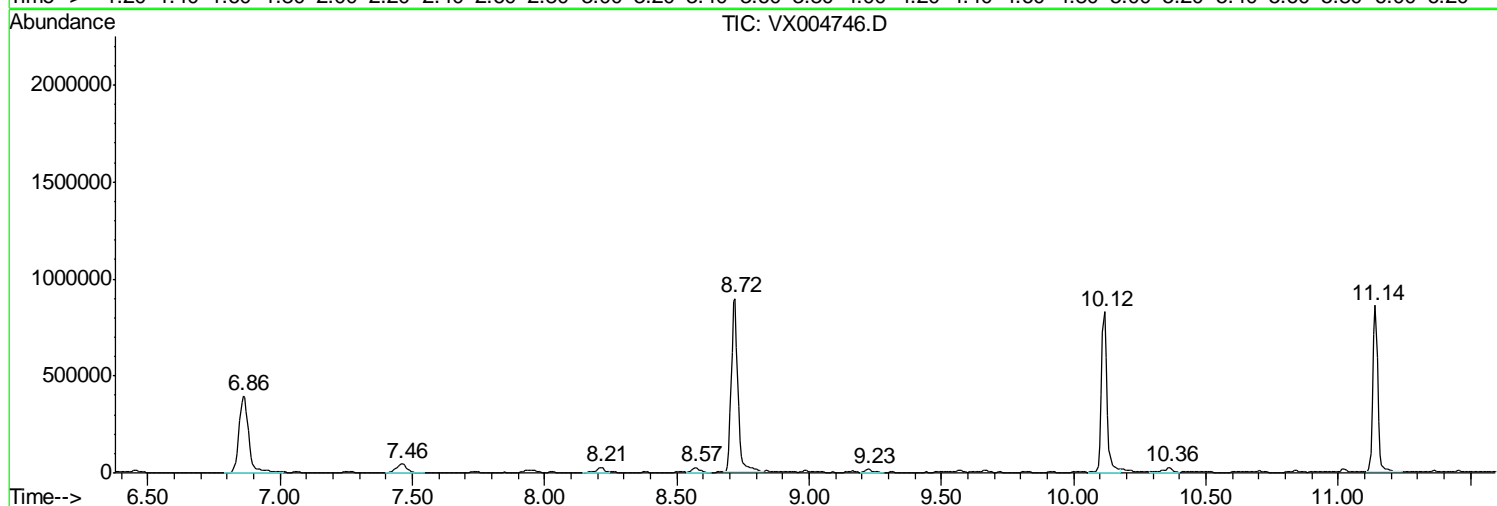
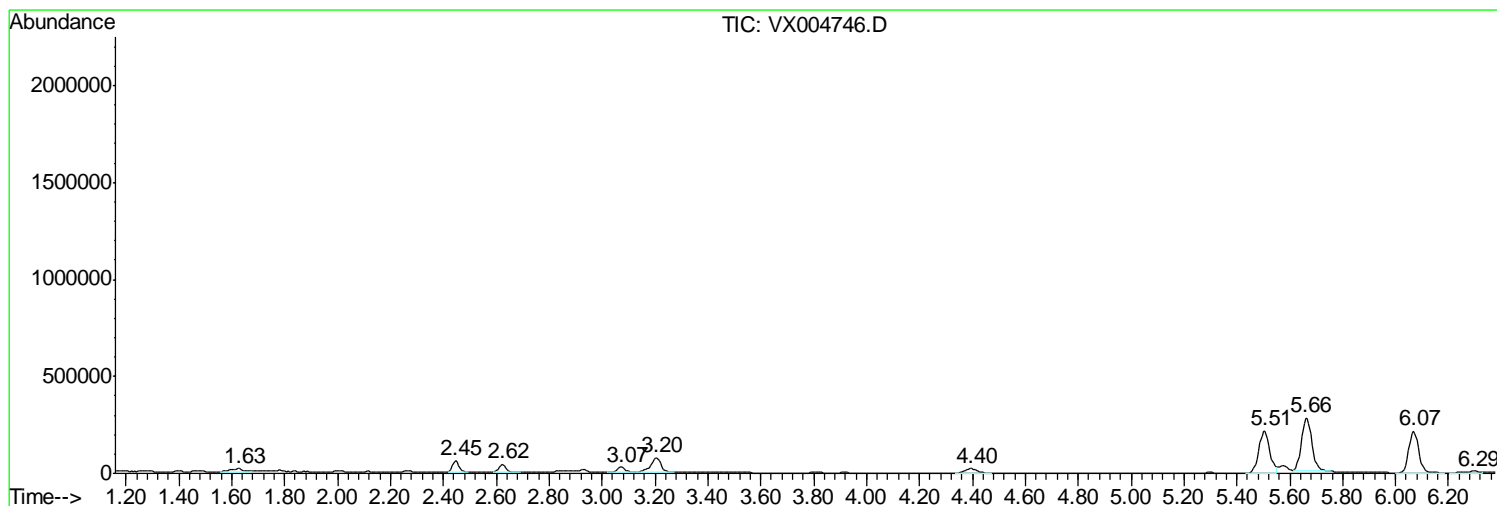
Sum of corrected areas: 26943693

Data Path : Z:\VOASRV\HPCHEM1\MSVOA X\DATA\VX092618\
 Data File : VX004746.D
 Acq On : 27 Sep 2018 01:58
 Operator : JC/MD
 Sample : J5029-02
 Misc : 5.0mL/MSVOA X/WATER
 ALS Vial : 29 Sample Multiplier: 1

Instrument :
 MSVOA_X
ClientSampled :
 DUP-092018-02

Quant Method : Z:\VOASRV\HPCHEM1\MSVOA_X\METHOD\82X092618W.M
 Quant Title : SW846 8260

TIC Library : C:\DATABASE\NIST11.L
 TIC Integration Parameters: LSCINT.P



Data Path : Z:\VOASRV\HPCHEM1\MSVOA X\DATA\VX092618\
 Data File : VX004746.D
 Acq On : 27 Sep 2018 01:58
 Operator : JC/MD
 Sample : J5029-02
 Misc : 5.0mL/MSVOA X/WATER
 ALS Vial : 29 Sample Multiplier: 1

Instrument :
 MSVOA_X
 ClientSampled :
 DUP-092018-02

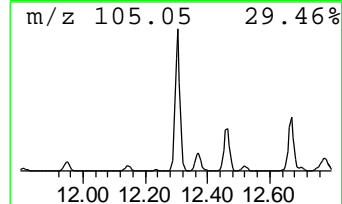
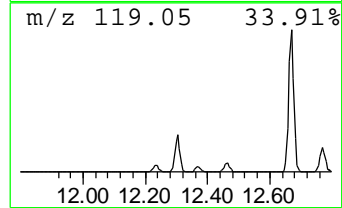
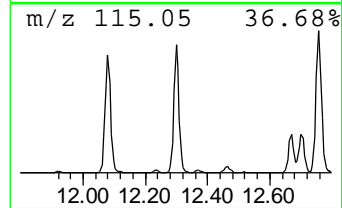
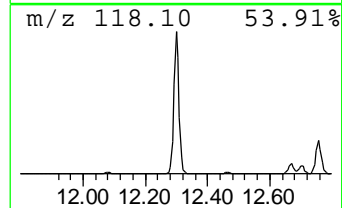
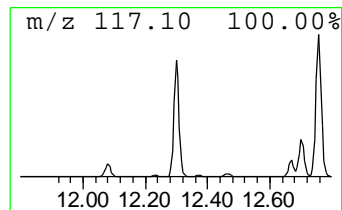
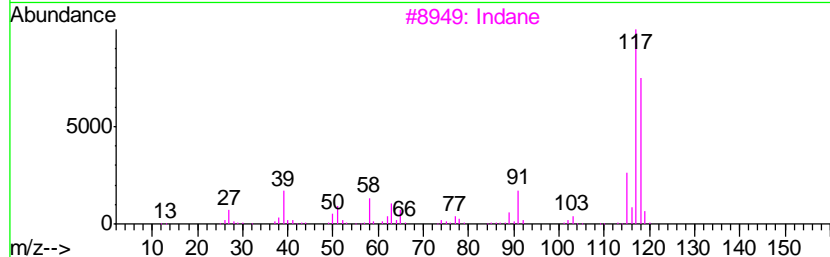
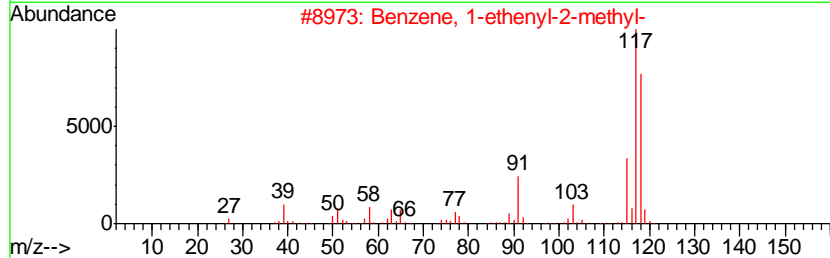
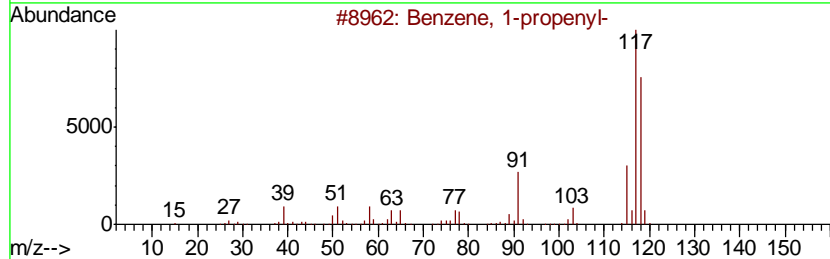
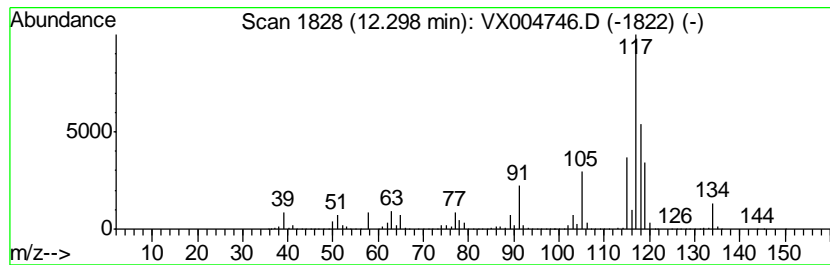
Quant Method : Z:\VOASRV\HPCHEM1\MSVOA_X\METHOD\82X092618W.M
 Quant Title : SW846 8260

TIC Library : C:\DATABASE\NIST11.L
 TIC Integration Parameters: LSCINT.P

 Peak Number 1 Benzene, 1-propenyl- Concentration Rank 2

R.T.	EstConc	Area	Relative to ISTD	R.T.
12.30	61.93 ug/l	1694040	1,4-Dichlorobenzene-d4	12.08

Hit#	of	Tentative ID	MW	MolForm	CAS#	Qual
1	5	Benzene, 1-propenyl-	118	C9H10	000637-50-3	92
2		Benzene, 1-ethenyl-2-methyl-	118	C9H10	000611-15-4	91
3		Indane	118	C9H10	000496-11-7	70
4		Benzene, 2-propenyl-	118	C9H10	000300-57-2	70
5		Benzene, cyclopropyl-	118	C9H10	000873-49-4	64



Data Path : Z:\VOASRV\HPCHEM1\MSVOA X\DATA\VX092618\
 Data File : VX004746.D
 Acq On : 27 Sep 2018 01:58
 Operator : JC/MD
 Sample : J5029-02
 Misc : 5.0mL/MSVOA X/WATER
 ALS Vial : 29 Sample Multiplier: 1

Instrument :
 MSVOA_X
 ClientSampled :
 DUP-092018-02

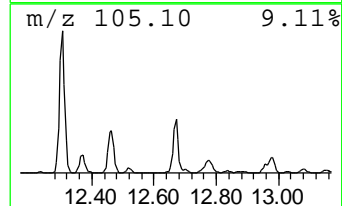
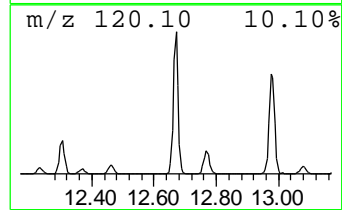
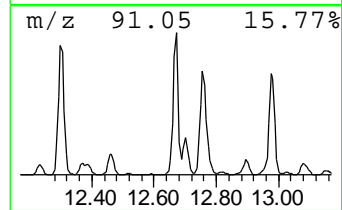
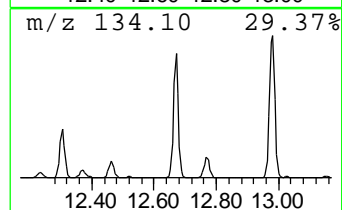
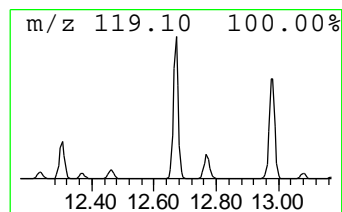
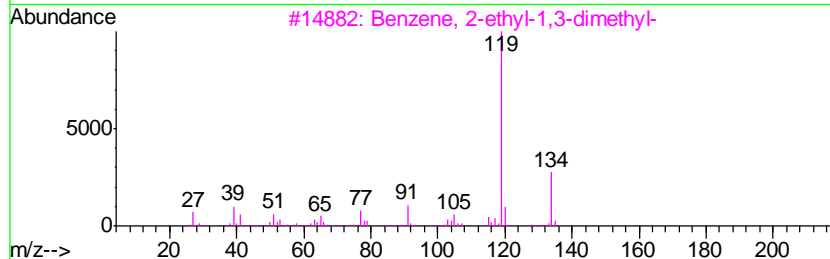
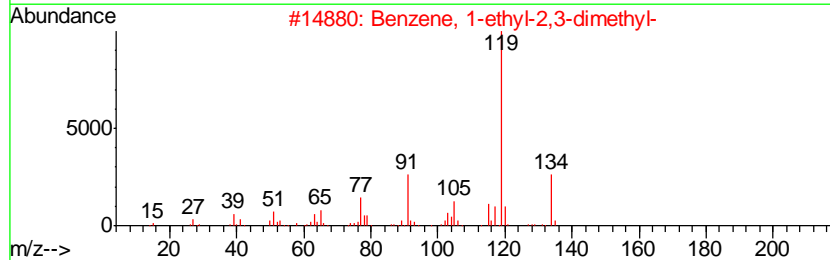
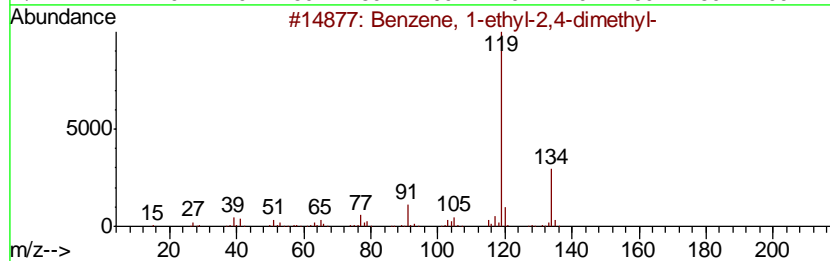
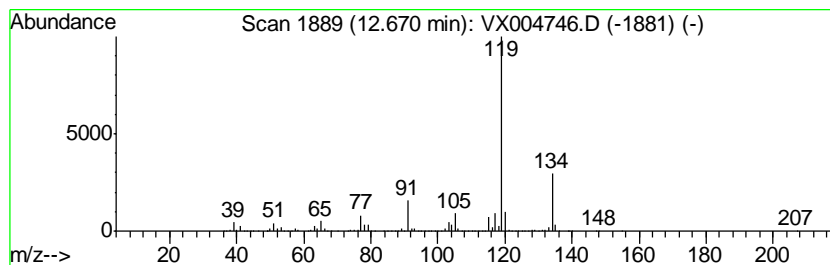
Quant Method : Z:\VOASRV\HPCHEM1\MSVOA_X\METHOD\82X092618W.M
 Quant Title : SW846 8260

TIC Library : C:\DATABASE\NIST11.L
 TIC Integration Parameters: LSCINT.P

 Peak Number 2 Benzene, 1-ethyl-2,4-dimethyl- Concentration Rank 4

R.T.	EstConc	Area	Relative to ISTD	R.T.
12.67	54.31 ug/l	1485560	1,4-Dichlorobenzene-d4	12.08

Hit#	of	Tentative ID	MW	MolForm	CAS#	Qual
1	5	Benzene, 1-ethyl-2,4-dimethyl-	134	C10H14	000874-41-9	97
2		Benzene, 1-ethyl-2,3-dimethyl-	134	C10H14	000933-98-2	96
3		Benzene, 2-ethyl-1,3-dimethyl-	134	C10H14	002870-04-4	95
4		Benzene, 2-ethyl-1,4-dimethyl-	134	C10H14	001758-88-9	95
5		Benzene, 4-ethyl-1,2-dimethyl-	134	C10H14	000934-80-5	95



Data Path : Z:\VOASRV\HPCHEM1\MSVOA X\DATA\VX092618\
 Data File : VX004746.D
 Acq On : 27 Sep 2018 01:58
 Operator : JC/MD
 Sample : J5029-02
 Misc : 5.0mL/MSVOA X/WATER
 ALS Vial : 29 Sample Multiplier: 1

Instrument :
 MSVOA_X
 ClientSampled :
 DUP-092018-02

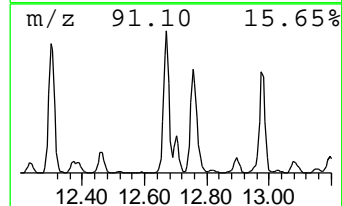
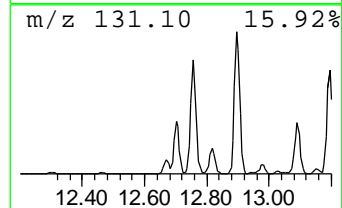
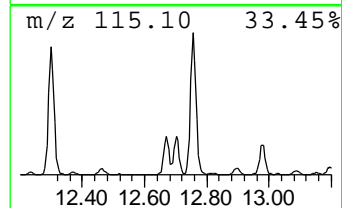
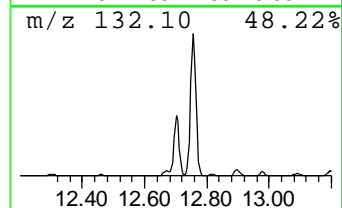
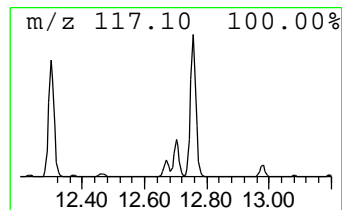
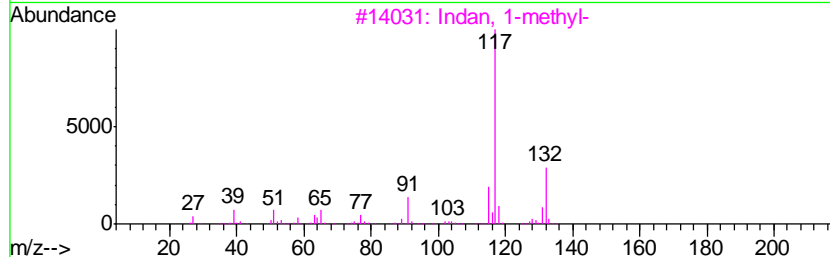
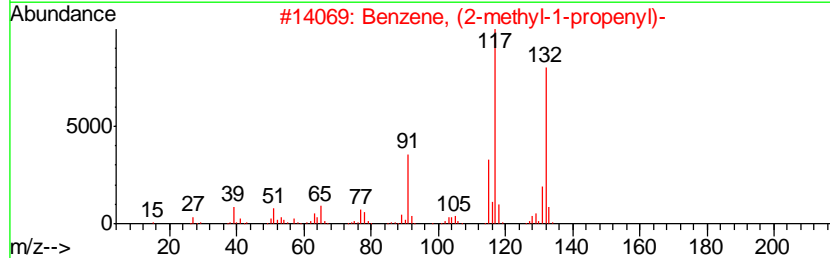
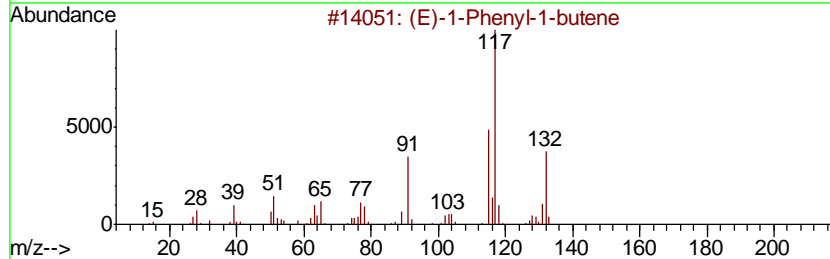
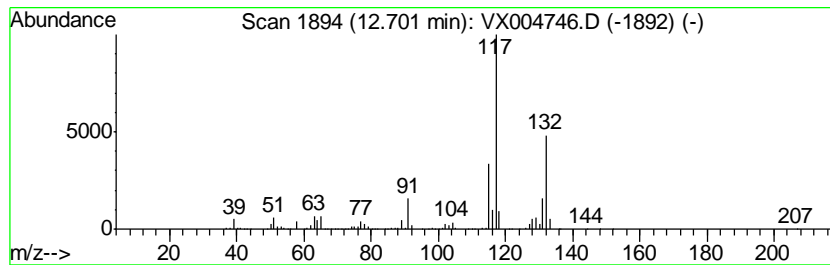
Quant Method : Z:\VOASRV\HPCHEM1\MSVOA_X\METHOD\82X092618W.M
 Quant Title : SW846 8260

TIC Library : C:\DATABASE\NIST11.L
 TIC Integration Parameters: LSCINT.P

 Peak Number 3 (E)-1-Phenyl-1-butene Concentration Rank 10

R.T.	EstConc	Area	Relative to ISTD	R.T.
12.70	15.28 ug/l	417906	1,4-Dichlorobenzene-d4	12.08

Hit#	of	Tentative ID	MW	MolForm	CAS#	Qual
1	5	(E)-1-Phenyl-1-butene	132	C10H12	001005-64-7	93
2		Benzene, (2-methyl-1-propenyl)-	132	C10H12	000768-49-0	91
3		Indan, 1-methyl-	132	C10H12	000767-58-8	90
4		1-Phenyl-1-butene	132	C10H12	000824-90-8	90
5		Benzene, 2-butenyl-	132	C10H12	001560-06-1	90



Data Path : Z:\VOASRV\HPCHEM1\MSVOA X\DATA\VX092618\
 Data File : VX004746.D
 Acq On : 27 Sep 2018 01:58
 Operator : JC/MD
 Sample : J5029-02
 Misc : 5.0mL/MSVOA X/WATER
 ALS Vial : 29 Sample Multiplier: 1

Instrument :
 MSVOA_X
 ClientSampled :
 DUP-092018-02

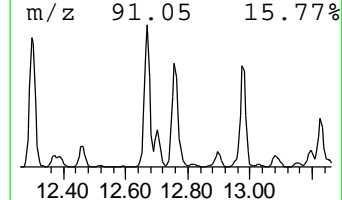
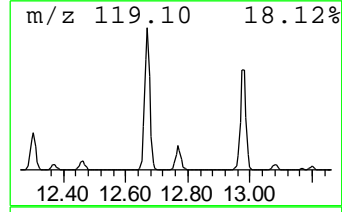
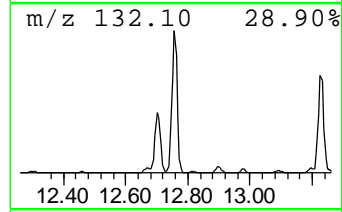
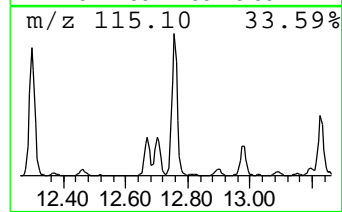
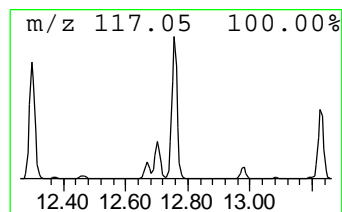
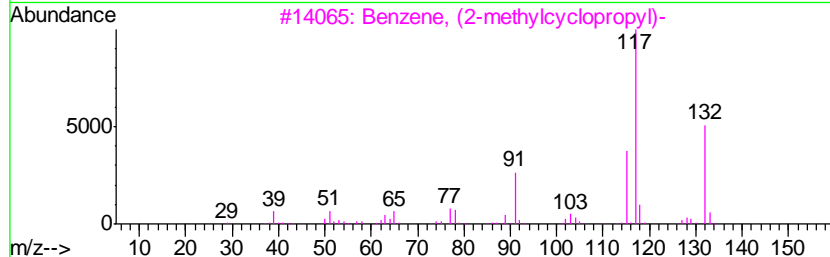
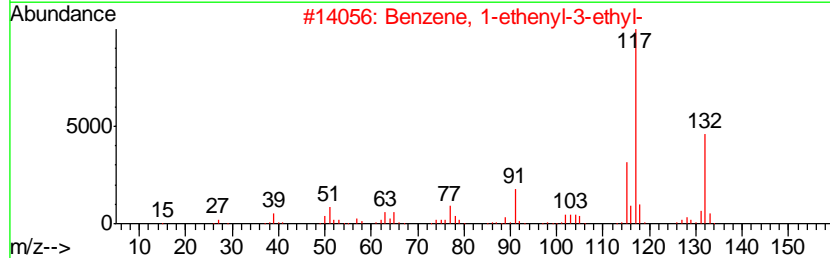
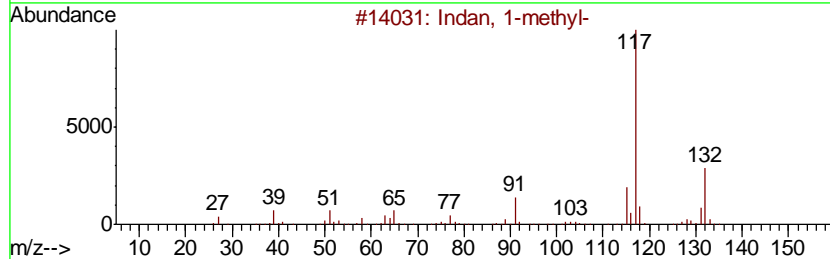
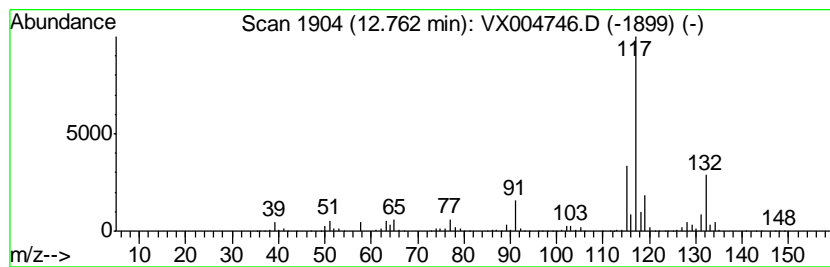
Quant Method : Z:\VOASRV\HPCHEM1\MSVOA_X\METHOD\82X092618W.M
 Quant Title : SW846 8260

TIC Library : C:\DATABASE\NIST11.L
 TIC Integration Parameters: LSCINT.P

 Peak Number 4 Indan, 1-methyl- Concentration Rank 3

R.T.	EstConc	Area	Relative to ISTD	R.T.
12.76	57.96 ug/l	1585350	1,4-Dichlorobenzene-d4	12.08

Hit#	of	Tentative ID	MW	MolForm	CAS#	Qual
1	5	Indan, 1-methyl-	132	C10H12	000767-58-8	93
2		Benzene, 1-ethenyl-3-ethyl-	132	C10H12	007525-62-4	87
3		Benzene, (2-methylcyclopropyl)-	132	C10H12	1000327-39-0	87
4		1-Phenyl-1-butene	132	C10H12	000824-90-8	87
5		Benzene, 1-ethenyl-4-ethyl-	132	C10H12	003454-07-7	86



Data Path : Z:\VOASRV\HPCHEM1\MSVOA X\DATA\VX092618\
 Data File : VX004746.D
 Acq On : 27 Sep 2018 01:58
 Operator : JC/MD
 Sample : J5029-02
 Misc : 5.0mL/MSVOA X/WATER
 ALS Vial : 29 Sample Multiplier: 1

Instrument :
 MSVOA_X
 ClientSampled :
 DUP-092018-02

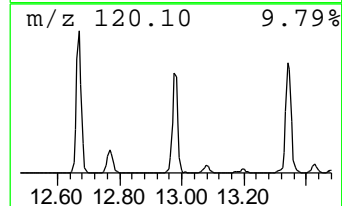
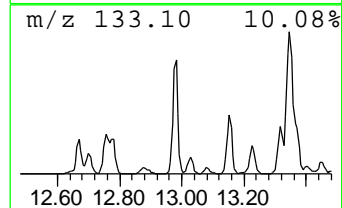
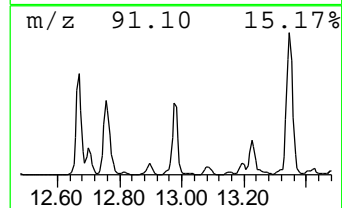
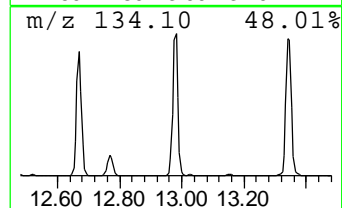
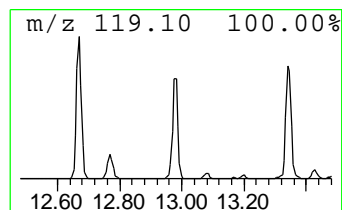
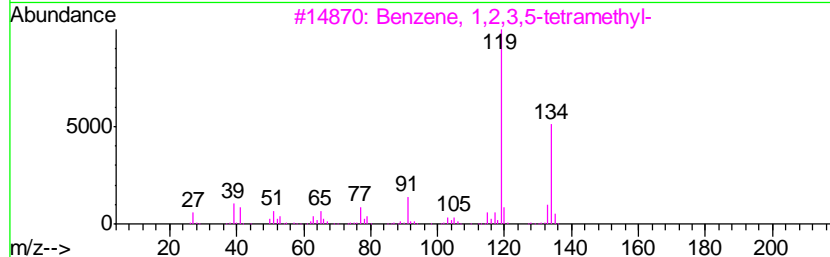
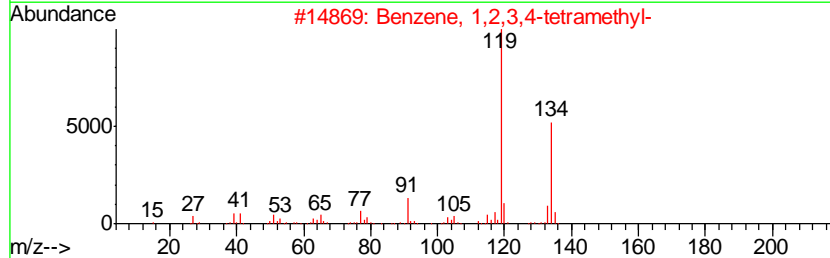
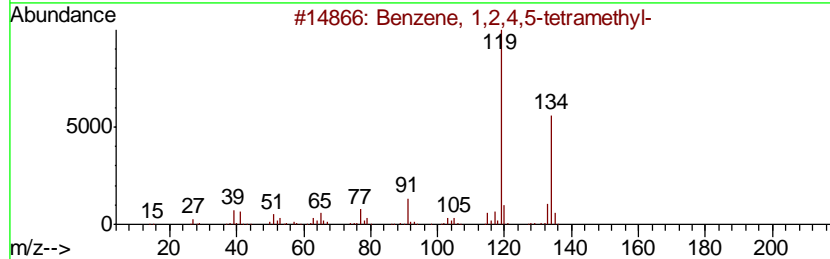
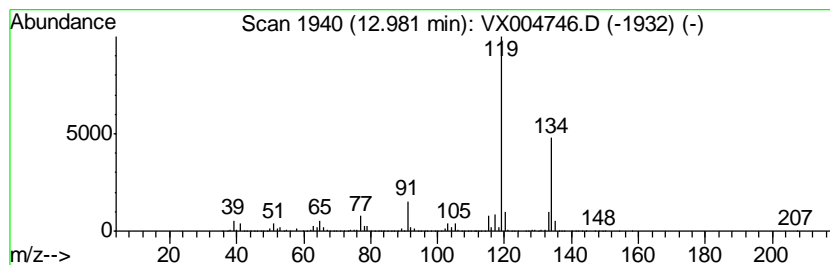
Quant Method : Z:\VOASRV\HPCHEM1\MSVOA_X\METHOD\82X092618W.M
 Quant Title : SW846 8260

TIC Library : C:\DATABASE\NIST11.L
 TIC Integration Parameters: LSCINT.P

 Peak Number 5 Benzene, 1,2,4,5-tetramethyl- Concentration Rank 5

R.T.	EstConc	Area	Relative to ISTD	R.T.
12.98	45.45 ug/l	1243120	1,4-Dichlorobenzene-d4	12.08

Hit#	of	Tentative ID	MW	MolForm	CAS#	Qual
1	5	Benzene, 1,2,4,5-tetramethyl-	134	C10H14	000095-93-2	97
2		Benzene, 1,2,3,4-tetramethyl-	134	C10H14	000488-23-3	97
3		Benzene, 1,2,3,5-tetramethyl-	134	C10H14	000527-53-7	95
4		o-Cymene	134	C10H14	000527-84-4	95
5		Benzene, 1-ethyl-2,4-dimethyl-	134	C10H14	000874-41-9	94



Data Path : Z:\VOASRV\HPCHEM1\MSVOA X\DATA\VX092618\
 Data File : VX004746.D
 Acq On : 27 Sep 2018 01:58
 Operator : JC/MD
 Sample : J5029-02
 Misc : 5.0mL/MSVOA X/WATER
 ALS Vial : 29 Sample Multiplier: 1

Instrument :
 MSVOA_X
 ClientSampled :
 DUP-092018-02

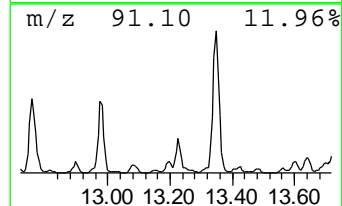
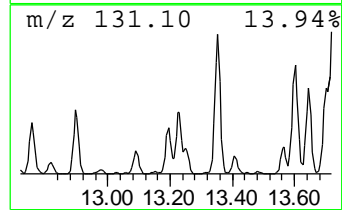
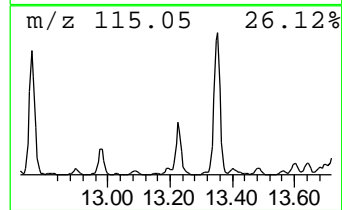
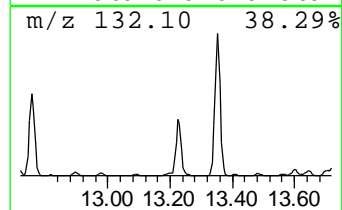
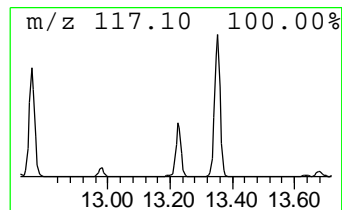
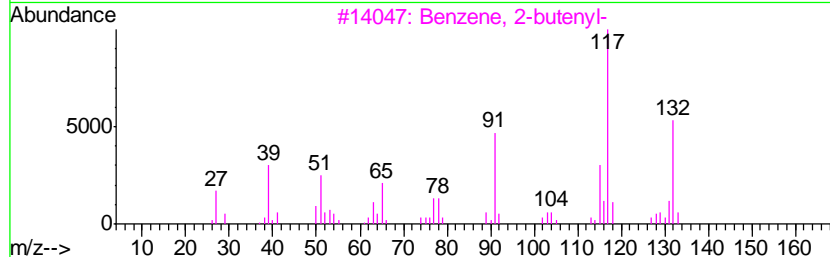
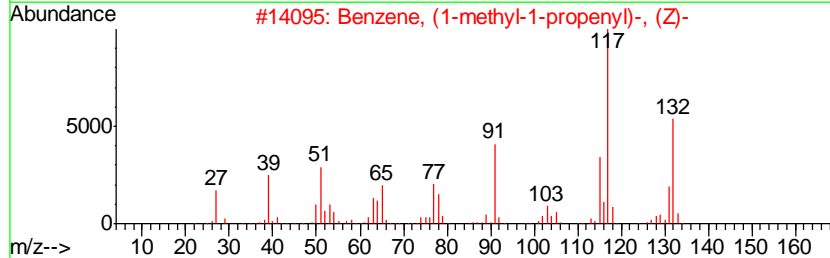
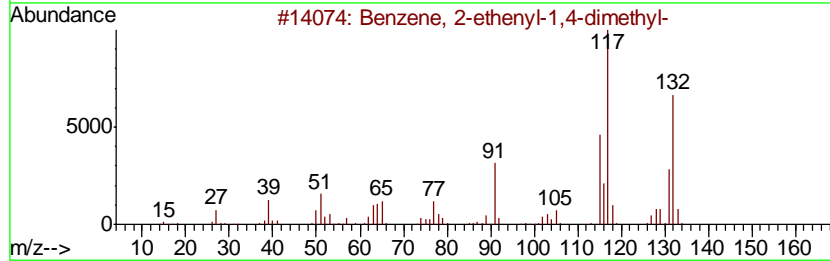
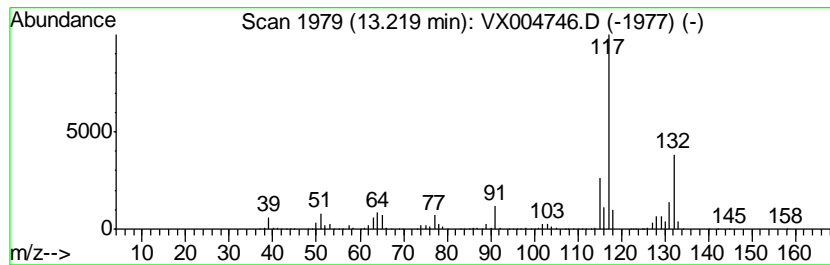
Quant Method : Z:\VOASRV\HPCHEM1\MSVOA_X\METHOD\82X092618W.M
 Quant Title : SW846 8260

TIC Library : C:\DATABASE\NIST11.L
 TIC Integration Parameters: LSCINT.P

 Peak Number 6 Benzene, 2-ethenyl-1,4-dime... Concentration Rank 7

R.T.	EstConc	Area	Relative to ISTD	R.T.
13.22	29.37 ug/l	803333	1,4-Dichlorobenzene-d4	12.08

Hit#	of	Tentative ID	MW	MolForm	CAS#	Qual
1	5	Benzene, 2-ethenyl-1,4-dimethyl-	132	C10H12	002039-89-6	96
2		Benzene, (1-methyl-1-propenyl)-, ...	132	C10H12	000767-99-7	91
3		Benzene, 2-butenyl-	132	C10H12	001560-06-1	91
4		1H-Indene, 2,3-dihydro-4-methyl-	132	C10H12	000824-22-6	90
5		Benzene, 1-ethenyl-4-ethyl-	132	C10H12	003454-07-7	87



Data Path : Z:\VOASRV\HPCHEM1\MSVOA X\DATA\VX092618\
 Data File : VX004746.D
 Acq On : 27 Sep 2018 01:58
 Operator : JC/MD
 Sample : J5029-02
 Misc : 5.0mL/MSVOA X/WATER
 ALS Vial : 29 Sample Multiplier: 1

Instrument :
 MSVOA_X
 ClientSampleID :
 DUP-092018-02

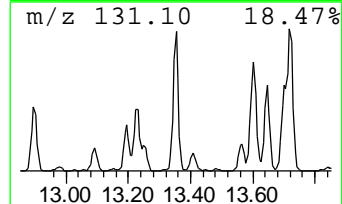
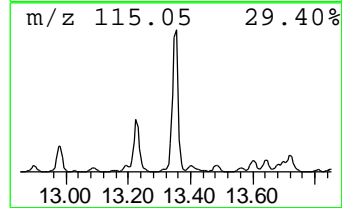
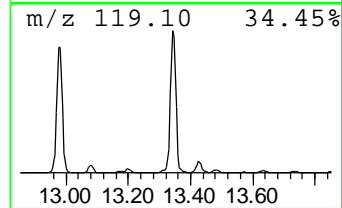
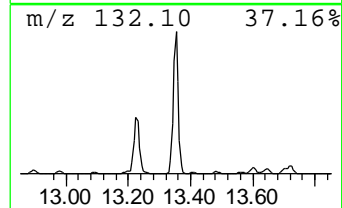
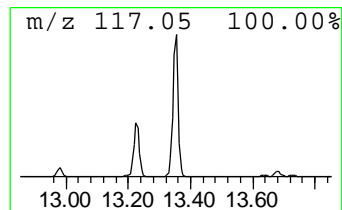
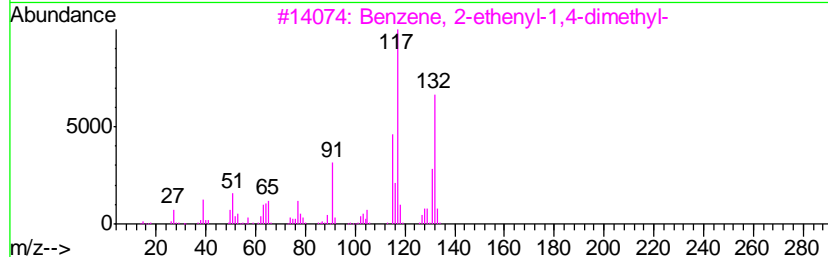
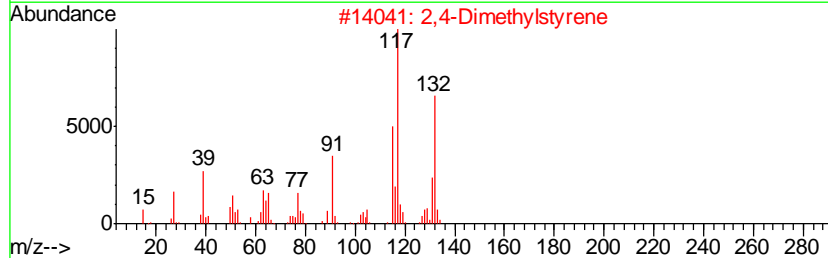
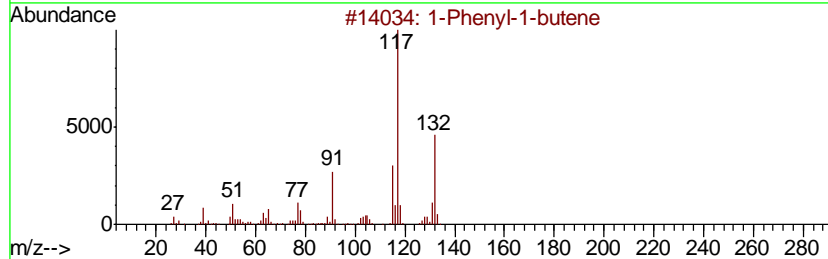
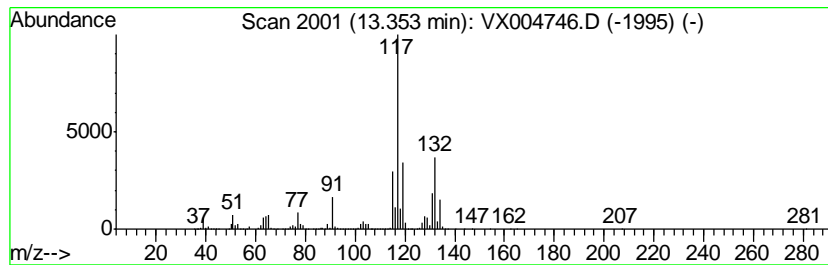
Quant Method : Z:\VOASRV\HPCHEM1\MSVOA_X\METHOD\82X092618W.M
 Quant Title : SW846 8260

TIC Library : C:\DATABASE\NIST11.L
 TIC Integration Parameters: LSCINT.P

 Peak Number 7 1-Phenyl-1-butene Concentration Rank 1

R.T.	EstConc	Area	Relative to ISTD	R.T.
13.35	113.43 ug/l	3102470	1,4-Dichlorobenzene-d4	12.08

Hit#	of	Tentative ID	MW	MolForm	CAS#	Qual
1	5	1-Phenyl-1-butene	132	C10H12	000824-90-8	95
2		2,4-Dimethylstyrene	132	C10H12	002234-20-0	94
3		Benzene, 2-ethenyl-1,4-dimethyl-	132	C10H12	002039-89-6	89
4		1H-Indene, 2,3-dihydro-4-methyl-	132	C10H12	000824-22-6	87
5		Benzene, 1-ethenyl-3-ethyl-	132	C10H12	007525-62-4	87



Data Path : Z:\VOASRV\HPCHEM1\MSVOA X\DATA\VX092618\
 Data File : VX004746.D
 Acq On : 27 Sep 2018 01:58
 Operator : JC/MD
 Sample : J5029-02
 Misc : 5.0mL/MSVOA X/WATER
 ALS Vial : 29 Sample Multiplier: 1

Instrument :
 MSVOA_X
 ClientSampleID :
 DUP-092018-02

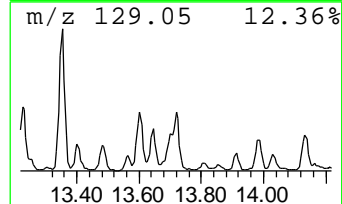
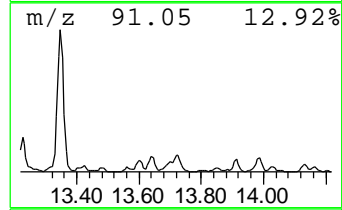
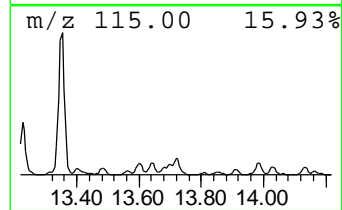
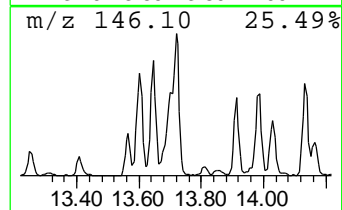
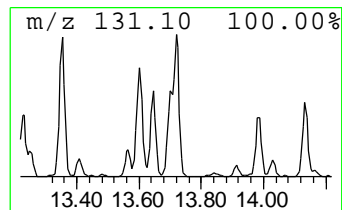
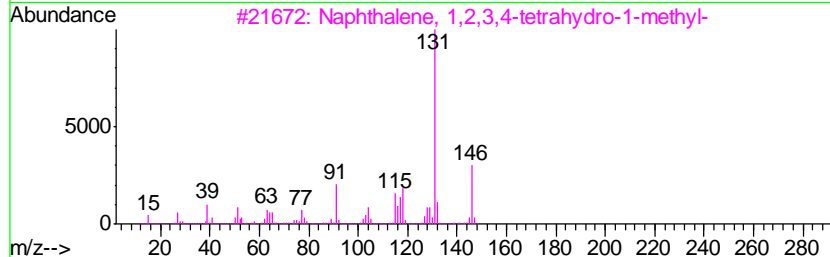
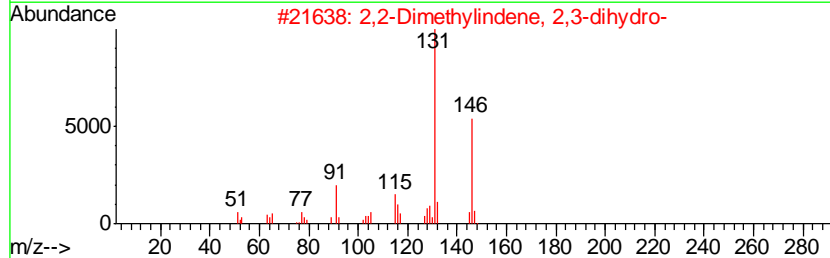
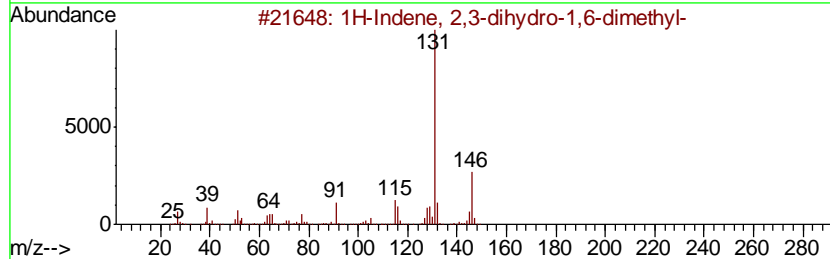
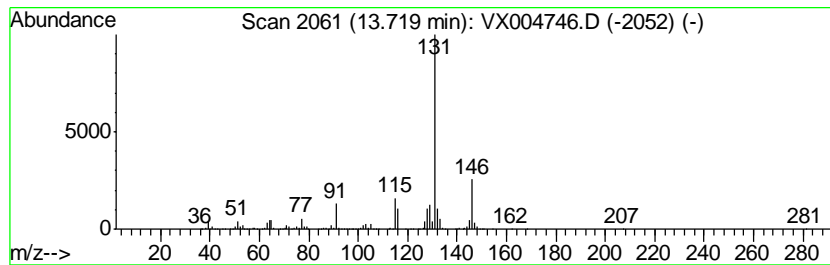
Quant Method : Z:\VOASRV\HPCHEM1\MSVOA_X\METHOD\82X092618W.M
 Quant Title : SW846 8260

TIC Library : C:\DATABASE\NIST11.L
 TIC Integration Parameters: LSCINT.P

 Peak Number 8 1H-Indene, 2,3-dihydro-1,6-... Concentration Rank 8

R.T.	EstConc	Area	Relative to ISTD	R.T.
13.72	27.86 ug/l	762095	1,4-Dichlorobenzene-d4	12.08

Hit#	of	Tentative ID	MW	MolForm	CAS#	Qual
1	5	1H-Indene, 2,3-dihydro-1,6-dimet...	146	C11H14	017059-48-2	91
2		2,2-Dimethylindene, 2,3-dihydro-	146	C11H14	020836-11-7	90
3		Naphthalene, 1,2,3,4-tetrahydro-...	146	C11H14	001559-81-5	90
4		1H-Indene, 2,3-dihydro-4,7-dimet...	146	C11H14	006682-71-9	87
5		Benzene, 1-methyl-4-(1-methyl-2-...	146	C11H14	097664-18-1	87



Data Path : Z:\VOASRV\HPCHEM1\MSVOA X\DATA\VX092618\
 Data File : VX004746.D
 Acq On : 27 Sep 2018 01:58
 Operator : JC/MD
 Sample : J5029-02
 Misc : 5.0mL/MSVOA X/WATER
 ALS Vial : 29 Sample Multiplier: 1

Instrument :
 MSVOA_X
 ClientSampled :
 DUP-092018-02

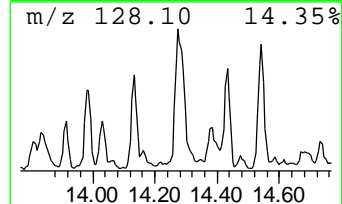
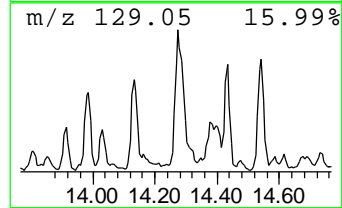
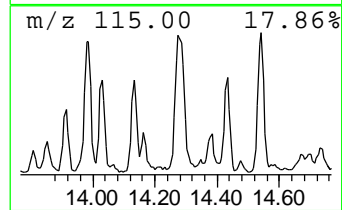
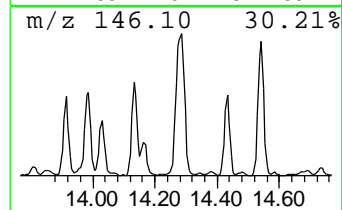
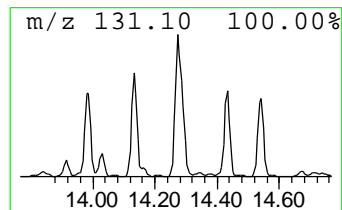
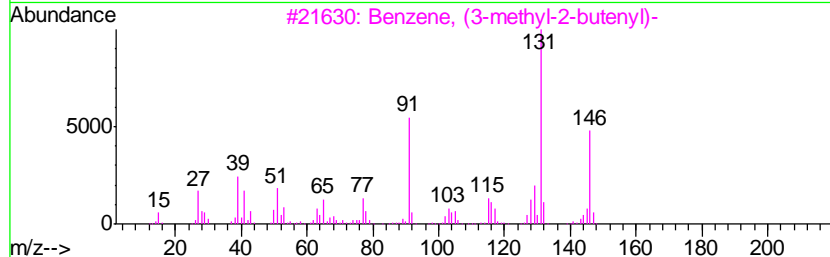
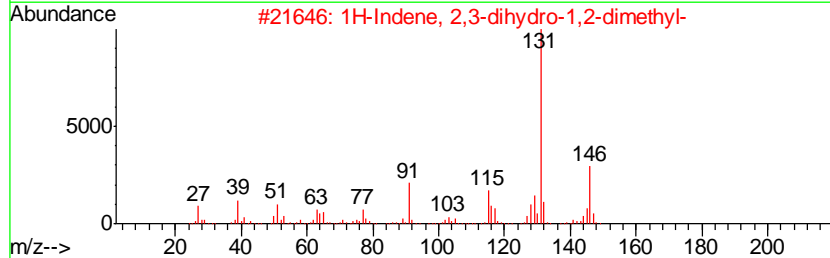
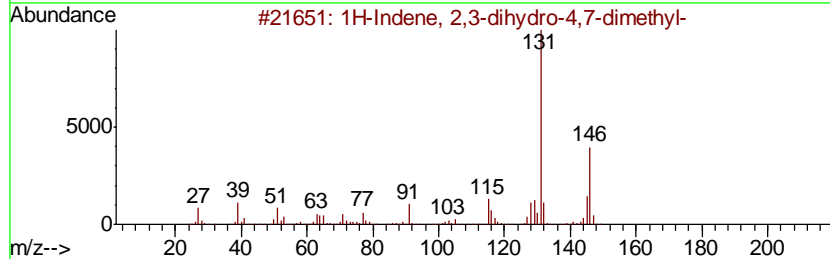
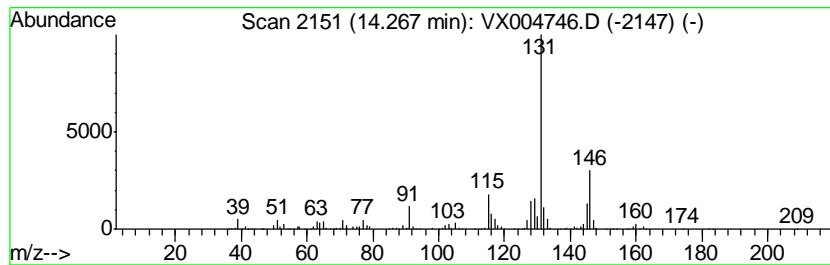
Quant Method : Z:\VOASRV\HPCHEM1\MSVOA_X\METHOD\82X092618W.M
 Quant Title : SW846 8260

TIC Library : C:\DATABASE\NIST11.L
 TIC Integration Parameters: LSCINT.P

 Peak Number 9 1H-Indene, 2,3-dihydro-4,7-... Concentration Rank 9

R.T.	EstConc	Area	Relative to ISTD	R.T.
14.27	17.40 ug/l	475922	1,4-Dichlorobenzene-d4	12.08

Hit#	of	Tentative ID	MW	MolForm	CAS#	Qual
1	5	1H-Indene, 2,3-dihydro-4,7-dimet...	146	C11H14	006682-71-9	96
2		1H-Indene, 2,3-dihydro-1,2-dimet...	146	C11H14	017057-82-8	94
3		Benzene, (3-methyl-2-butenyl)-	146	C11H14	004489-84-3	93
4		1H-Indene, 2,3-dihydro-1,3-dimet...	146	C11H14	004175-53-5	91
5		1H-Indene, 2,3-dihydro-1,6-dimet...	146	C11H14	017059-48-2	91



Data Path : Z:\VOASRV\HPCHEM1\MSVOA X\DATA\VX092618\
 Data File : VX004746.D
 Acq On : 27 Sep 2018 01:58
 Operator : JC/MD
 Sample : J5029-02
 Misc : 5.0mL/MSVOA X/WATER
 ALS Vial : 29 Sample Multiplier: 1

Instrument :
 MSVOA_X
 ClientSampled :
 DUP-092018-02

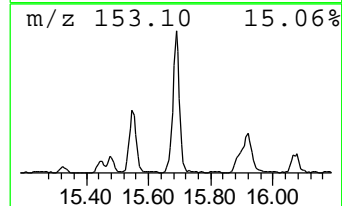
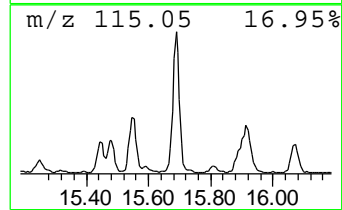
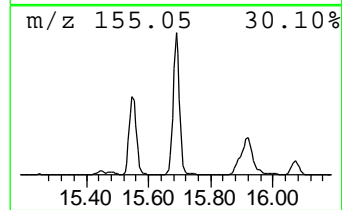
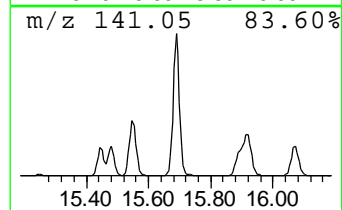
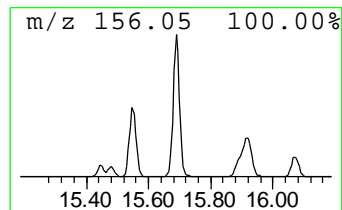
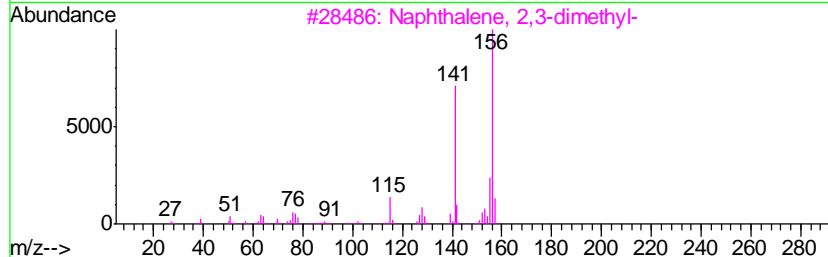
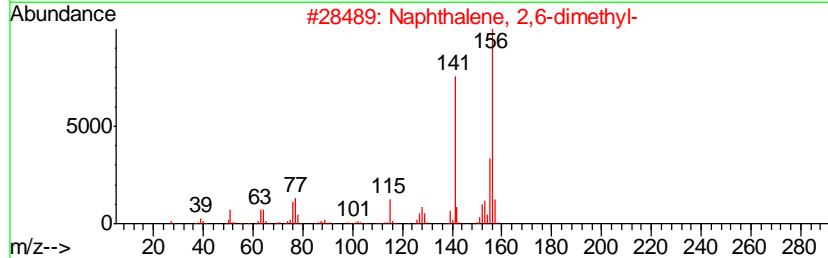
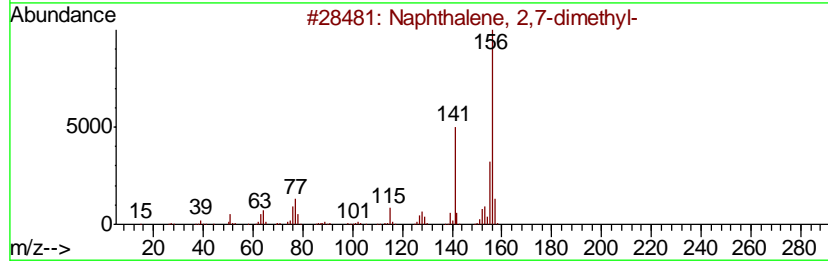
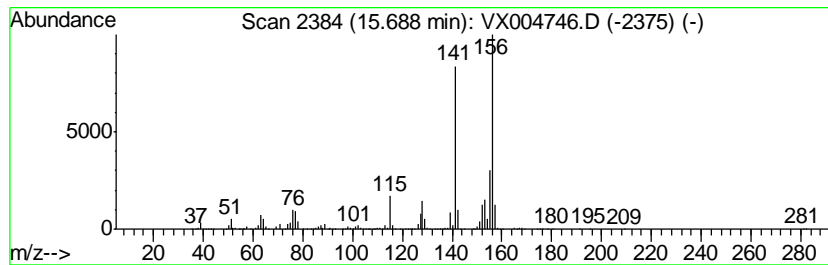
Quant Method : Z:\VOASRV\HPCHEM1\MSVOA_X\METHOD\82X092618W.M
 Quant Title : SW846 8260

TIC Library : C:\DATABASE\NIST11.L
 TIC Integration Parameters: LSCINT.P

 Peak Number 10 Naphthalene, 2,7-dimethyl- Concentration Rank 6

R.T.	EstConc	Area	Relative to ISTD	R.T.
15.69	30.13 ug/l	824197	1,4-Dichlorobenzene-d4	12.08

Hit#	of	Tentative ID	MW	MolForm	CAS#	Qual
1	5	Naphthalene, 2,7-dimethyl-	156	C12H12	000582-16-1	97
2		Naphthalene, 2,6-dimethyl-	156	C12H12	000581-42-0	97
3		Naphthalene, 2,3-dimethyl-	156	C12H12	000581-40-8	97
4		Naphthalene, 1,6-dimethyl-	156	C12H12	000575-43-9	97
5		Naphthalene, 1,4-dimethyl-	156	C12H12	000571-58-4	97



Data Path : Z:\VOASRV\HPCHEM1\MSVOA_X\DATA\VX092618\
Data File : VX004746.D
Acq On : 27 Sep 2018 01:58
Operator : JC/MD
Sample : J5029-02
Misc : 5.0mL/MSVOA_X/WATER
ALS Vial : 29 Sample Multiplier: 1

Instrument :
MSVOA_X
ClientSampleId :
DUP-092018-02

Quant Method : Z:\VOASRV\HPCHEM1\MSVOA_X\METHOD\82X092618W.M
Quant Title : SW846 8260

TIC Library : C:\DATABASE\NIST11.L
TIC Integration Parameters: LSCINT.P

TIC Top Hit name	RT	EstConc	Units	Response	--Internal Standard--			
					#	RT	Resp	Conc
Benzene, 1-propenyl-	12.30	61.9	ug/l	1694040	4	12.08	1367600	50.0
Benzene, 1-ethyl-...	12.67	54.3	ug/l	1485560	4	12.08	1367600	50.0
(E)-1-Phenyl-1-bu...	12.70	15.3	ug/l	417906	4	12.08	1367600	50.0
Indan, 1-methyl-	12.76	58.0	ug/l	1585350	4	12.08	1367600	50.0
Benzene, 1,2,4,5-...	12.98	45.5	ug/l	1243120	4	12.08	1367600	50.0
Benzene, 2-etheny...	13.22	29.4	ug/l	803333	4	12.08	1367600	50.0
1-Phenyl-1-butene	13.35	113.4	ug/l	3102470	4	12.08	1367600	50.0
1H-Indene, 2,3-di...	13.72	27.9	ug/l	762095	4	12.08	1367600	50.0
1H-Indene, 2,3-di...	14.27	17.4	ug/l	475922	4	12.08	1367600	50.0
Naphthalene, 2,7-...	15.69	30.1	ug/l	824197	4	12.08	1367600	50.0