

Data Path : Z:\VOASRV\HPCHEM1\MSVOA X\DATA\VX092618\  
 Data File : VX004756.D  
 Acq On : 27 Sep 2018 06:25  
 Operator : JC/MD  
 Sample : J5020-06  
 Misc : 5.0mL/MSVOA X/WATER  
 ALS Vial : 39 Sample Multiplier: 1

Instrument :  
 MSVOA\_X  
 ClientSampleId :  
 T3-MW-3-9.0-091918

Integration Parameters: RTEINT.P

Integrator: RTE  
 Smoothing : ON  
 Sampling : 1  
 Start Thrs: 0.2  
 Stop Thrs : 0

Filtering: 5  
 Min Area: 3 % of largest Peak  
 Max Peaks: 100  
 Peak Location: TOP

If leading or trailing edge < 100 prefer < Baseline drop else tangent >  
 Peak separation: 5

Method : Z:\VOASRV\HPCHEM1\MSVOA\_X\METHOD\82X092618W.M  
 Title : SW846 8260

Signal : TIC

peak #	R.T. min	first scan	max scan	last scan	PK TY	peak height	corr. area	corr. % max.	% of total
1	1.294	16	23	32	rBV2	81625	296668	7.56%	0.615%
2	2.617	234	240	249	rVB	61721	112105	2.86%	0.233%
3	3.196	326	335	345	rVB4	25801	88049	2.24%	0.183%
4	4.397	522	532	543	rBV3	40371	119453	3.04%	0.248%
5	5.507	701	714	722	rBV	188735	547835	13.96%	1.136%
6	5.665	731	740	774	rVB	243511	734688	18.72%	1.524%
7	6.067	795	806	817	rBV	212554	544830	13.88%	1.130%
8	6.860	923	936	948	rBV	420362	989888	25.22%	2.053%
9	7.457	1022	1034	1046	rBV4	33497	96574	2.46%	0.200%
10	8.213	1145	1158	1176	rBV	37667	86579	2.21%	0.180%
11	8.573	1211	1217	1224	rBV	23801	43761	1.11%	0.091%
12	8.713	1234	1240	1259	rBV	908135	1592237	40.56%	3.303%
13	10.116	1460	1470	1478	rBV	844441	1217042	31.00%	2.524%
14	10.183	1478	1481	1489	rVB	21889	44508	1.13%	0.092%
15	10.512	1532	1535	1546	rVB	28503	45145	1.15%	0.094%
16	10.664	1547	1560	1564	rBV4	50388	117308	2.99%	0.243%
17	10.835	1576	1588	1596	rBV	111547	198509	5.06%	0.412%
18	10.914	1596	1601	1607	rBV2	41767	70639	1.80%	0.147%
19	11.018	1613	1618	1631	rVB	632156	859175	21.89%	1.782%
20	11.140	1632	1638	1643	rBV	892953	1161999	29.60%	2.410%
21	11.182	1643	1645	1652	rVB	83564	109122	2.78%	0.226%
22	11.280	1658	1661	1666	rVB	46908	57782	1.47%	0.120%
23	11.359	1666	1674	1684	rVV	1969116	2494647	63.55%	5.174%
24	11.457	1684	1690	1694	rVB2	25977	48958	1.25%	0.102%
25	11.670	1718	1725	1732	rBV2	203404	279069	7.11%	0.579%
26	11.768	1733	1741	1745	rBV	96675	134723	3.43%	0.279%
27	11.920	1760	1766	1768	rBV	323637	451403	11.50%	0.936%
28	11.944	1768	1770	1778	rVB	565160	680918	17.35%	1.412%
29	12.079	1787	1792	1801	rBV	1152436	1422980	36.25%	2.952%
30	12.231	1812	1817	1822	rBV	232781	296206	7.55%	0.614%
31	12.298	1823	1828	1835	rVV	3016199	3925542	100.00%	8.142%
32	12.389	1835	1843	1849	rVB2	474410	1008042	25.68%	2.091%
33	12.463	1849	1855	1861	rBV	391031	488838	12.45%	1.014%
34	12.530	1861	1866	1870	rVB2	35184	55678	1.42%	0.115%

Data Path : Z:\VOASRV\HPCHEM1\MSVOA X\DATA\VX092618\  
 Data File : VX004756.D  
 Acq On : 27 Sep 2018 06:25  
 Operator : JC/MD  
 Sample : J5020-06  
 Misc : 5.0mL/MSVOA X/WATER  
 ALS Vial : 39 Sample Multiplier: 1

Instrument :  
 MSVOA\_X  
 ClientSampleId :  
 T3-MW-3-9.0-091918

Integration Parameters: RTEINT.P

Integrator: RTE  
 Smoothing : ON  
 Sampling : 1  
 Start Thrs: 0.2  
 Stop Thrs : 0

Filtering: 5  
 Min Area: 3 % of largest Peak  
 Max Peaks: 100  
 Peak Location: TOP

If leading or trailing edge < 100 prefer < Baseline drop else tangent >  
 Peak separation: 5

Method : Z:\VOASRV\HPCHEM1\MSVOA\_X\METHOD\82X092618W.M  
 Title : SW846 8260

35	12.670	1880	1889	1892	rBV	1175844	1458819	37.16%	3.026%
36	12.700	1892	1894	1899	rVV	773137	940077	23.95%	1.950%
37	12.755	1899	1903	1910	rVV2	1815533	3136185	79.89%	6.505%
38	12.816	1910	1913	1919	rVV2	93180	138726	3.53%	0.288%
39	12.895	1919	1926	1931	rVB	353602	512056	13.04%	1.062%
40	12.981	1931	1940	1944	rBV	1738052	2296515	58.50%	4.764%
41	13.024	1944	1947	1952	rVB2	68799	94531	2.41%	0.196%
42	13.084	1952	1957	1963	rBV3	165141	259237	6.60%	0.538%
43	13.152	1963	1968	1972	rBV2	170123	244790	6.24%	0.508%
44	13.194	1972	1975	1977	rVV2	292059	354992	9.04%	0.736%
45	13.225	1977	1980	1990	rVB	748038	999256	25.46%	2.073%
46	13.316	1990	1995	1996	rBV2	76915	101599	2.59%	0.211%
47	13.353	1996	2001	2006	rVV2	2068054	2756599	70.22%	5.718%
48	13.402	2006	2009	2011	rVV2	154812	191487	4.88%	0.397%
49	13.426	2011	2013	2018	rVV	129693	161253	4.11%	0.334%
50	13.481	2018	2022	2028	rVB	234260	306553	7.81%	0.636%
51	13.566	2030	2036	2038	rBV	159433	210730	5.37%	0.437%
52	13.603	2038	2042	2045	rVV	259808	367426	9.36%	0.762%
53	13.639	2045	2048	2052	rVV2	474407	688898	17.55%	1.429%
54	13.700	2052	2058	2059	rVV2	299337	479031	12.20%	0.994%
55	13.719	2059	2061	2070	rVB2	471815	702093	17.89%	1.456%
56	13.810	2070	2076	2079	rBV	112350	149777	3.82%	0.311%
57	13.853	2079	2083	2088	rVB3	99751	142834	3.64%	0.296%
58	13.914	2088	2093	2097	rVB	537320	629412	16.03%	1.306%
59	13.987	2097	2105	2109	rBV2	443953	638398	16.26%	1.324%
60	14.029	2109	2112	2116	rVV	129237	148079	3.77%	0.307%
61	14.133	2124	2129	2132	rBV	159454	206761	5.27%	0.429%
62	14.164	2132	2134	2139	rVB2	75094	84323	2.15%	0.175%
63	14.273	2147	2152	2162	rVB2	373613	656590	16.73%	1.362%
64	14.377	2166	2169	2174	rVV	149912	181806	4.63%	0.377%
65	14.432	2174	2178	2182	rVB	190804	231550	5.90%	0.480%
66	14.474	2182	2185	2190	rVB	60652	83113	2.12%	0.172%
67	14.542	2190	2196	2201	rBV2	856117	1108097	28.23%	2.298%
68	14.676	2209	2218	2220	rBV2	154273	297516	7.58%	0.617%
69	14.731	2224	2227	2232	rVV	132626	178371	4.54%	0.370%
70	14.785	2232	2236	2240	rVV2	39586	54030	1.38%	0.112%
71	14.840	2240	2245	2250	rVV	2317922	2979886	75.91%	6.181%

Data Path : Z:\VOASRV\HPCHEM1\MSVOA X\DATA\VX092618\  
 Data File : VX004756.D  
 Acq On : 27 Sep 2018 06:25  
 Operator : JC/MD  
 Sample : J5020-06  
 Misc : 5.0mL/MSVOA X/WATER  
 ALS Vial : 39 Sample Multiplier: 1

Instrument :  
 MSVOA\_X  
 ClientSampleId :  
 T3-MW-3-9.0-091918

Integration Parameters: RTEINT.P  
 Integrator: RTE  
 Smoothing : ON Filtering: 5  
 Sampling : 1 Min Area: 3 % of largest Peak  
 Start Thrs: 0.2 Max Peaks: 100  
 Stop Thrs : 0 Peak Location: TOP

If leading or trailing edge < 100 prefer < Baseline drop else tangent >  
 Peak separation: 5

Method : Z:\VOASRV\HPCHEM1\MSVOA\_X\METHOD\82X092618W.M  
 Title : SW846 8260

72	14.907	2254	2256	2260	rVV2	82081	90627	2.31%	0.188%
73	14.974	2260	2267	2273	rVV4	41030	97412	2.48%	0.202%
74	15.249	2306	2312	2320	rBV	105057	187493	4.78%	0.389%
75	15.328	2320	2325	2331	rVB	31927	49503	1.26%	0.103%
76	15.450	2339	2345	2347	rBV	79855	125424	3.20%	0.260%
77	15.480	2347	2350	2354	rVV	105527	138674	3.53%	0.288%
78	15.547	2355	2361	2367	rVV	466627	732378	18.66%	1.519%
79	15.596	2367	2369	2375	rVV4	31086	48100	1.23%	0.100%
80	15.688	2376	2384	2388	rVV	667239	1084746	27.63%	2.250%
81	15.724	2388	2390	2397	rVB	151801	214818	5.47%	0.446%
82	15.810	2398	2404	2410	rBV3	30312	56593	1.44%	0.117%
83	15.919	2411	2422	2432	rVB	224241	590858	15.05%	1.226%
84	16.072	2441	2447	2459	rVB	91179	160189	4.08%	0.332%
85	16.285	2477	2482	2487	rVB	22942	41416	1.06%	0.086%

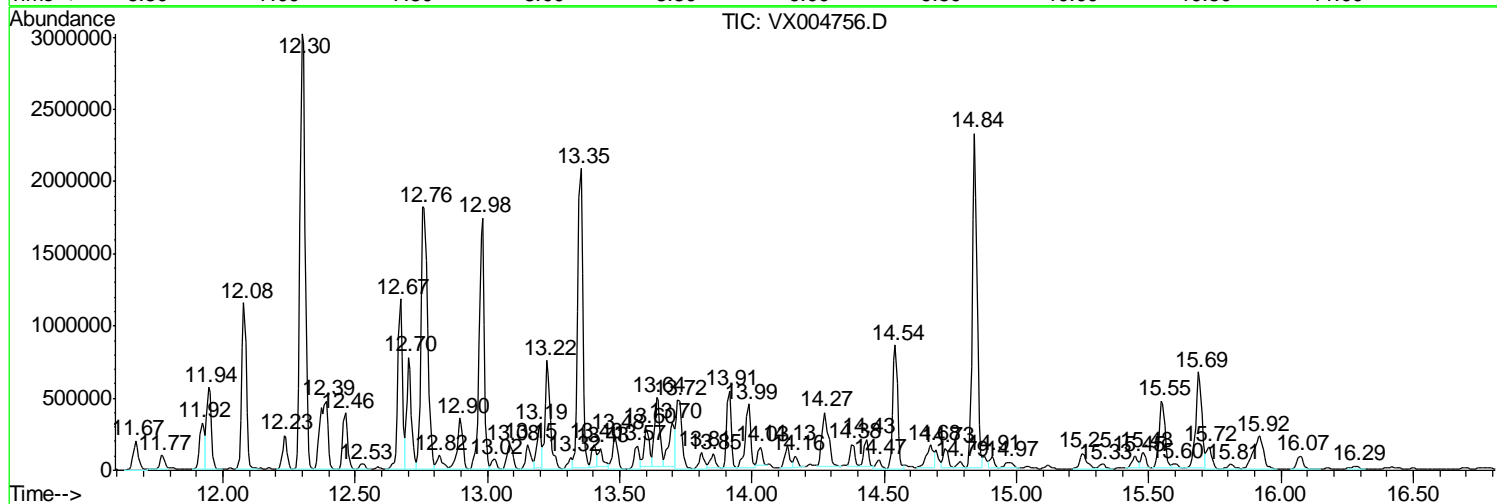
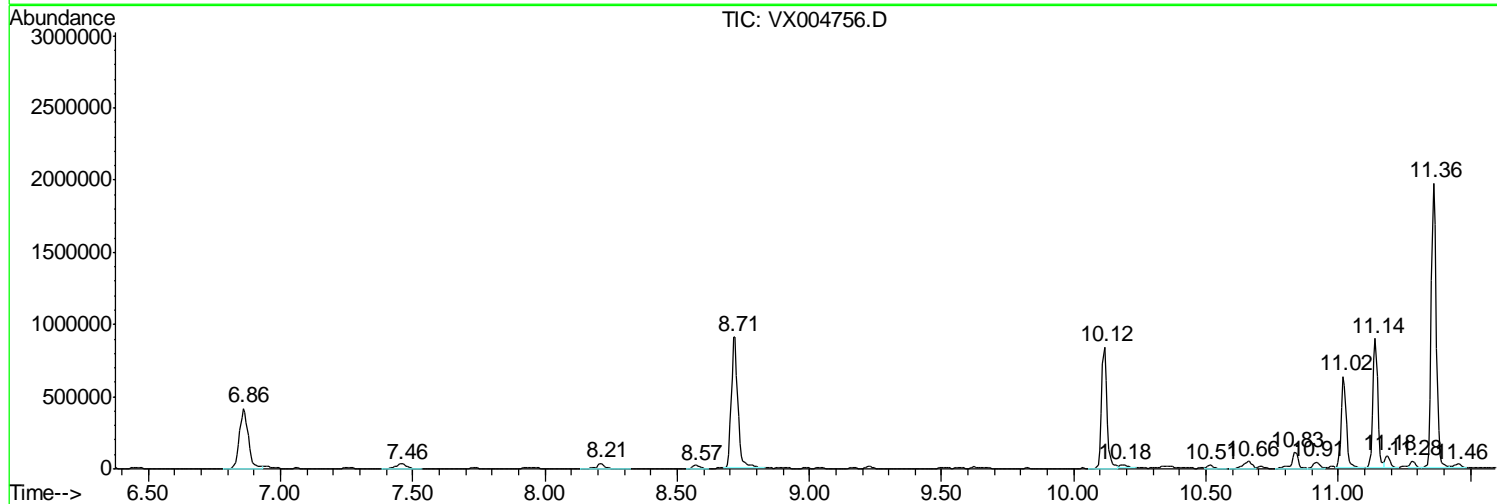
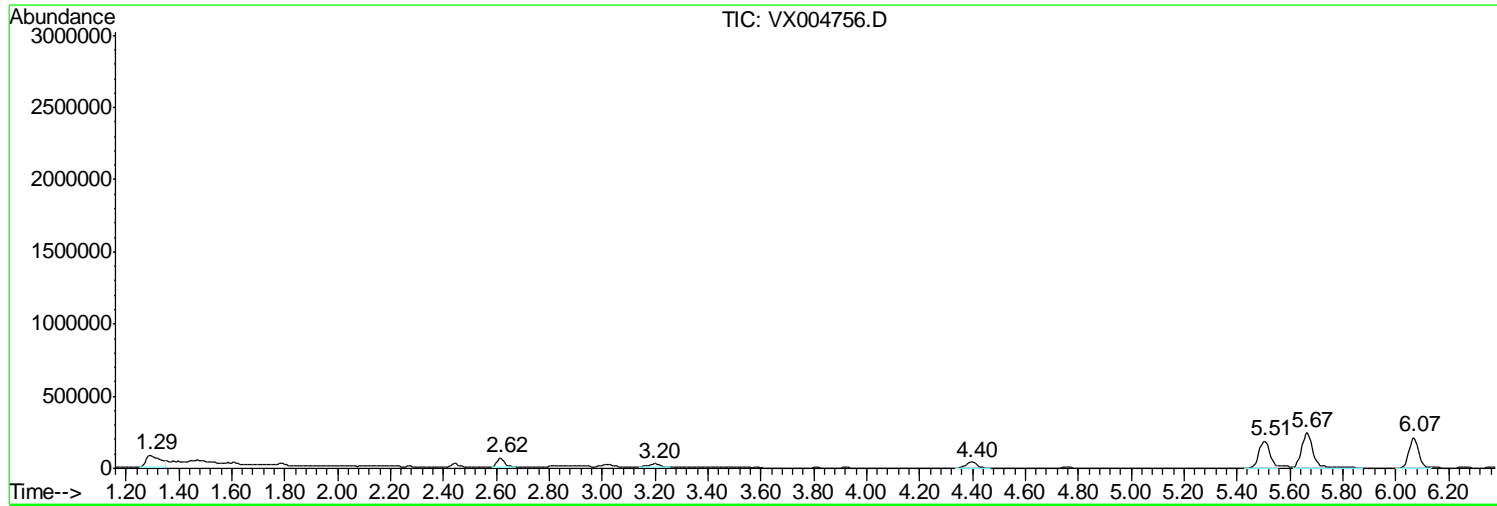
Sum of corrected areas: 48210527

Data Path : Z:\VOASRV\HPCHEM1\MSVOA X\DATA\VX092618\  
 Data File : VX004756.D  
 Acq On : 27 Sep 2018 06:25  
 Operator : JC/MD  
 Sample : J5020-06  
 Misc : 5.0mL/MSVOA X/WATER  
 ALS Vial : 39 Sample Multiplier: 1

Instrument :  
 MSVOA\_X  
 ClientSampleId :  
 T3-MW-3-9.0-091918

Quant Method : Z:\VOASRV\HPCHEM1\MSVOA\_X\METHOD\82X092618W.M  
 Quant Title : SW846 8260

TIC Library : C:\DATABASE\NIST11.L  
 TIC Integration Parameters: LSCINT.P



Data Path : Z:\VOASRV\HPCHEM1\MSVOA X\DATA\VX092618\  
 Data File : VX004756.D  
 Acq On : 27 Sep 2018 06:25  
 Operator : JC/MD  
 Sample : J5020-06  
 Misc : 5.0mL/MSVOA X/WATER  
 ALS Vial : 39 Sample Multiplier: 1

Instrument :  
 MSVOA\_X  
 ClientSampled :  
 T3-MW-3-9.0-091918

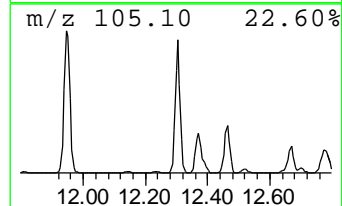
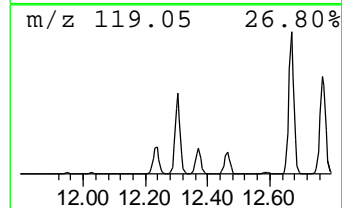
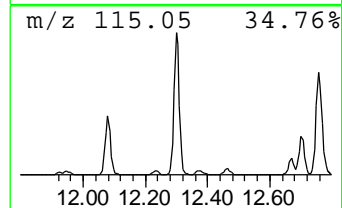
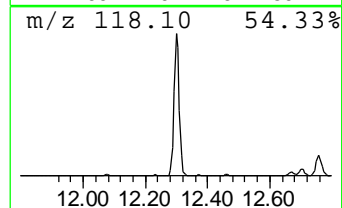
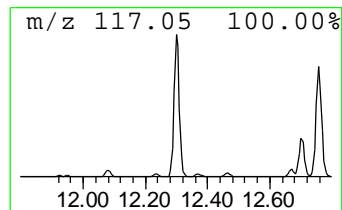
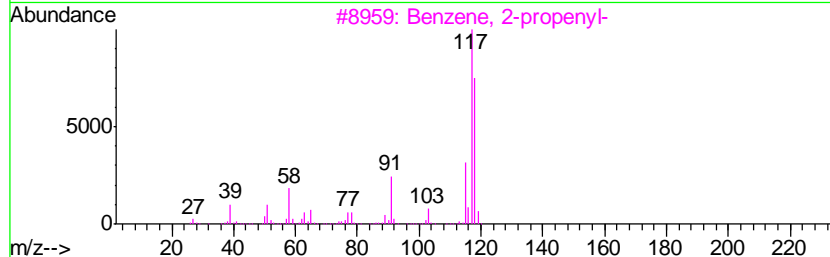
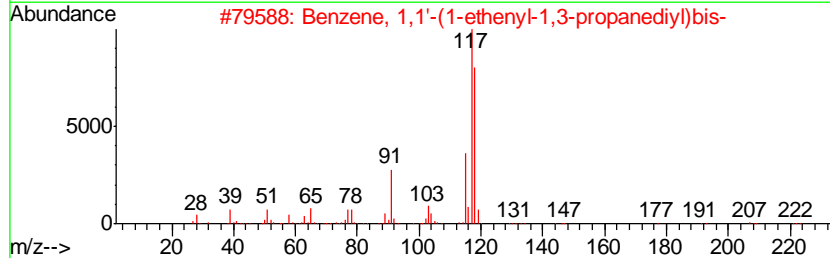
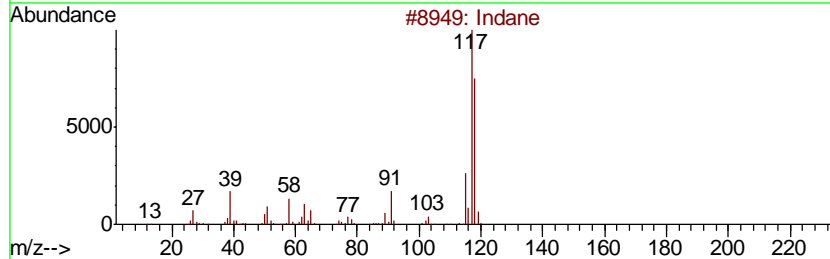
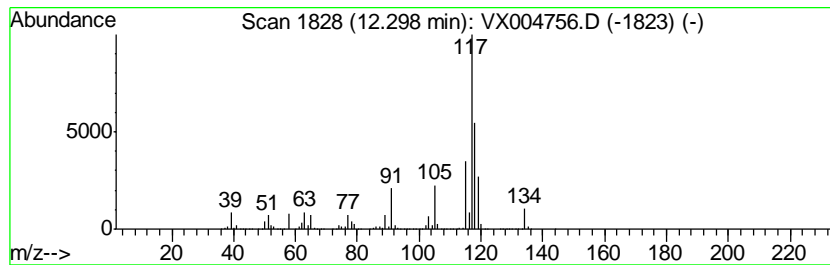
Quant Method : Z:\VOASRV\HPCHEM1\MSVOA\_X\METHOD\82X092618W.M  
 Quant Title : SW846 8260

TIC Library : C:\DATABASE\NIST11.L  
 TIC Integration Parameters: LSCINT.P

\*\*\*\*\*  
 Peak Number 1 Indane Concentration Rank 1

R.T.	EstConc	Area	Relative to ISTD	R.T.
12.30	137.93 ug/l	3925540	1,4-Dichlorobenzene-d4	12.08

Hit#	of	Tentative ID	MW	MolForm	CAS#	Qual
1	5	Indane	118	C9H10	000496-11-7	70
2		Benzene, 1,1'-(1-ethenyl-1,3-pro...	222	C17H18	061141-97-7	64
3		Benzene, 2-propenyl-	118	C9H10	000300-57-2	64
4		Benzene, cyclopropyl-	118	C9H10	000873-49-4	64
5		Benzene, 1-propenyl-	118	C9H10	000637-50-3	58



Data Path : Z:\VOASRV\HPCHEM1\MSVOA X\DATA\VX092618\  
 Data File : VX004756.D  
 Acq On : 27 Sep 2018 06:25  
 Operator : JC/MD  
 Sample : J5020-06  
 Misc : 5.0mL/MSVOA X/WATER  
 ALS Vial : 39 Sample Multiplier: 1

Instrument :  
 MSVOA\_X  
 ClientSampleID :  
 T3-MW-3-9.0-091918

Quant Method : Z:\VOASRV\HPCHEM1\MSVOA\_X\METHOD\82X092618W.M  
 Quant Title : SW846 8260

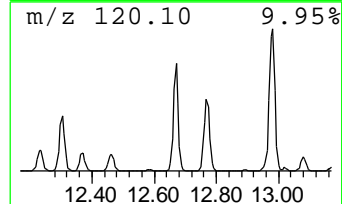
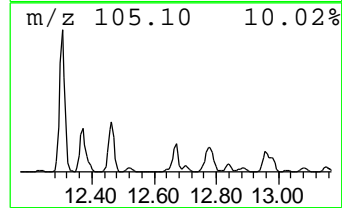
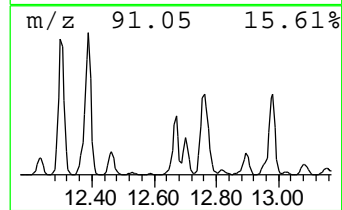
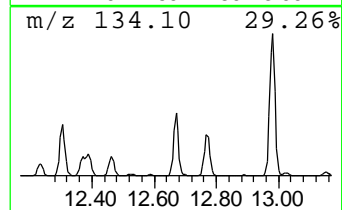
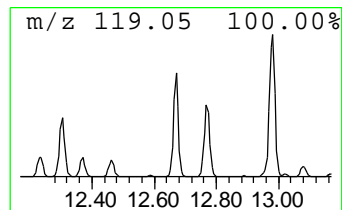
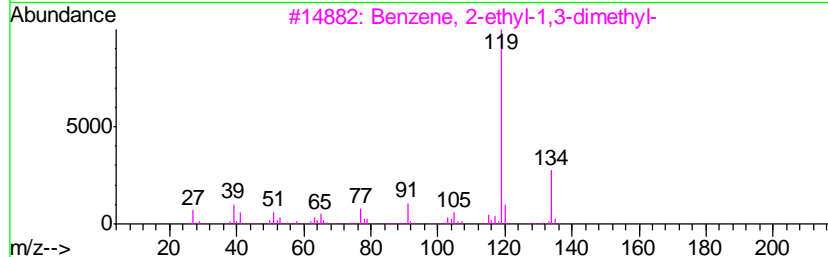
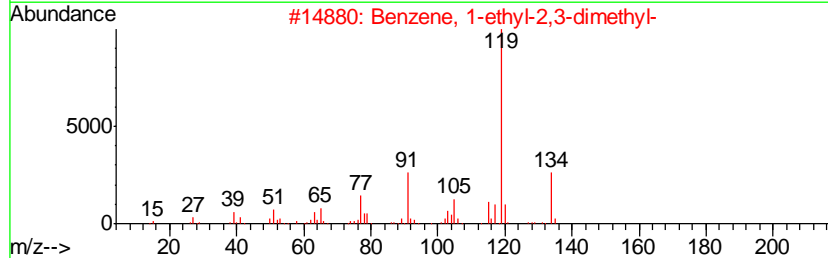
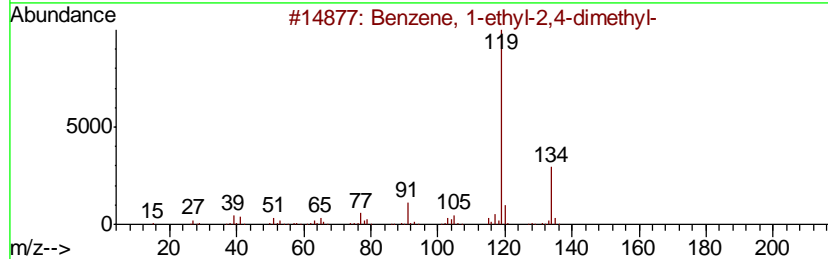
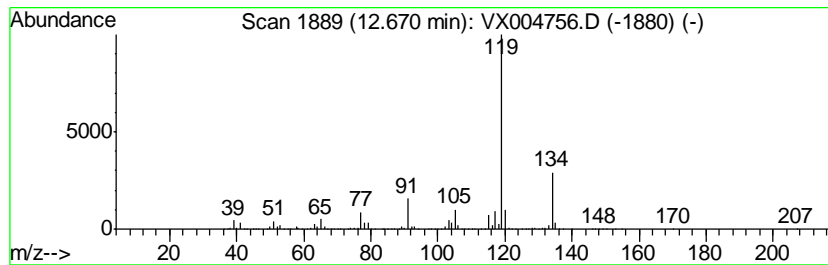
TIC Library : C:\DATABASE\NIST11.L  
 TIC Integration Parameters: LSCINT.P

\*\*\*\*\*  
 Peak Number 2 Benzene, 1-ethyl-2,4-dimethyl- Concentration Rank 6

R.T.	EstConc	Area	Relative to ISTD	R.T.
12.67	51.26 ug/l	1458820	1,4-Dichlorobenzene-d4	12.08

Hit#	of	Tentative ID	MW	MolForm	CAS#	Qual
1	5	Benzene, 1-ethyl-2,4-dimethyl-	134	C10H14	000874-41-9	97
2		Benzene, 1-ethyl-2,3-dimethyl-	134	C10H14	000933-98-2	96
3		Benzene, 2-ethyl-1,3-dimethyl-	134	C10H14	002870-04-4	95
4		Benzene, 2-ethyl-1,4-dimethyl-	134	C10H14	001758-88-9	95
5		Benzene, 4-ethyl-1,2-dimethyl-	134	C10H14	000934-80-5	95



Data Path : Z:\VOASRV\HPCHEM1\MSVOA X\DATA\VX092618\  
 Data File : VX004756.D  
 Acq On : 27 Sep 2018 06:25  
 Operator : JC/MD  
 Sample : J5020-06  
 Misc : 5.0mL/MSVOA X/WATER  
 ALS Vial : 39 Sample Multiplier: 1

Instrument :  
 MSVOA\_X  
 ClientSampled :  
 T3-MW-3-9.0-091918

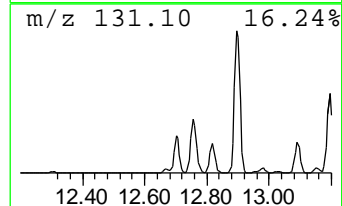
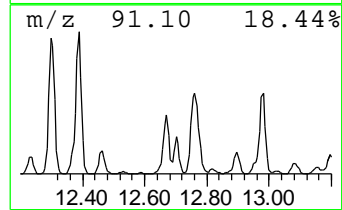
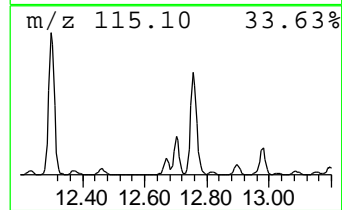
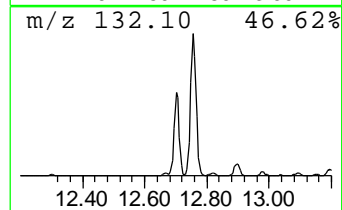
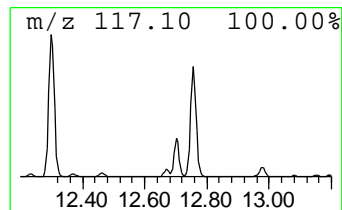
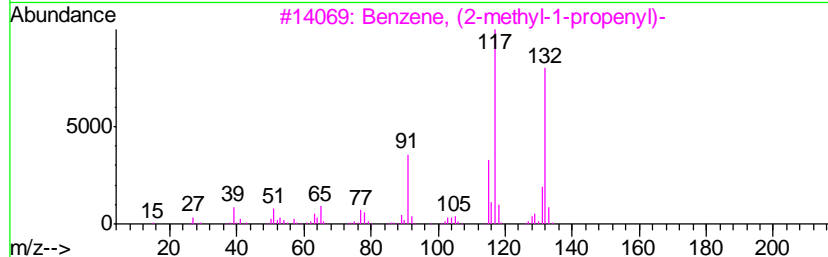
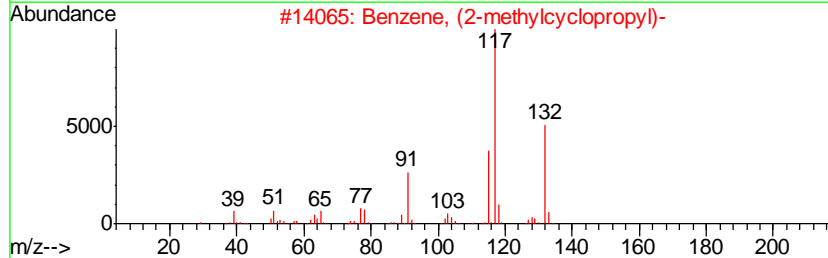
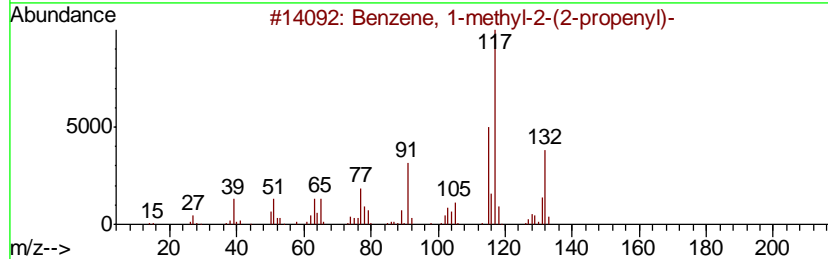
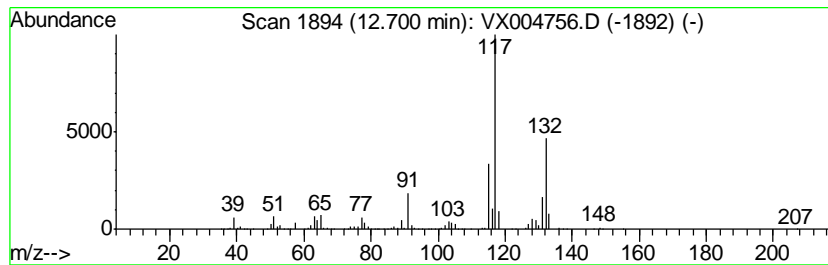
Quant Method : Z:\VOASRV\HPCHEM1\MSVOA\_X\METHOD\82X092618W.M  
 Quant Title : SW846 8260

TIC Library : C:\DATABASE\NIST11.L  
 TIC Integration Parameters: LSCINT.P

\*\*\*\*\*  
 Peak Number 3 Benzene, 1-methyl-2-(2-prop... Concentration Rank 10

R.T.	EstConc	Area	Relative to ISTD	R.T.
12.70	33.03 ug/l	940077	1,4-Dichlorobenzene-d4	12.08

Hit#	of	Tentative ID	MW	MolForm	CAS#	Qual
1	5	Benzene, 1-methyl-2-(2-propenyl)-	132	C10H12	001587-04-8	94
2		Benzene, (2-methylcyclopropyl)-	132	C10H12	1000327-39-0	91
3		Benzene, (2-methyl-1-propenyl)-	132	C10H12	000768-49-0	91
4		Benzene, 2-butenyl-	132	C10H12	001560-06-1	91
5		1-Phenyl-1-butene	132	C10H12	000824-90-8	91



Data Path : Z:\VOASRV\HPCHEM1\MSVOA X\DATA\VX092618\  
 Data File : VX004756.D  
 Acq On : 27 Sep 2018 06:25  
 Operator : JC/MD  
 Sample : J5020-06  
 Misc : 5.0mL/MSVOA X/WATER  
 ALS Vial : 39 Sample Multiplier: 1

Instrument :  
 MSVOA\_X  
 ClientSampleID :  
 T3-MW-3-9.0-091918

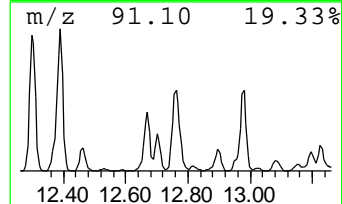
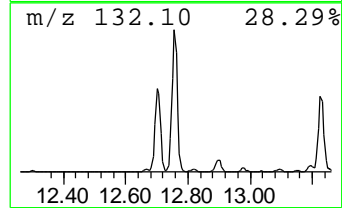
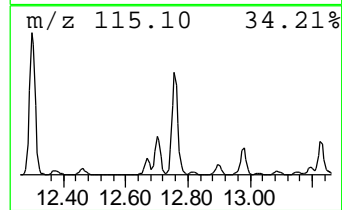
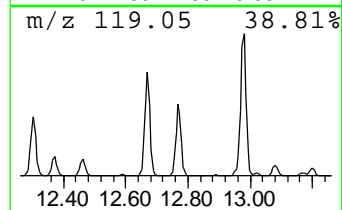
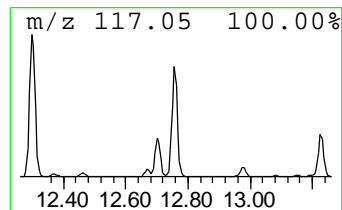
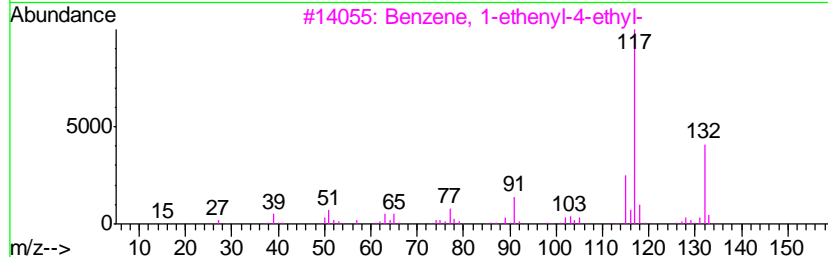
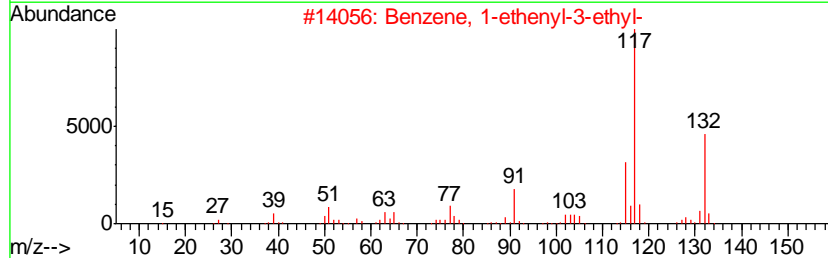
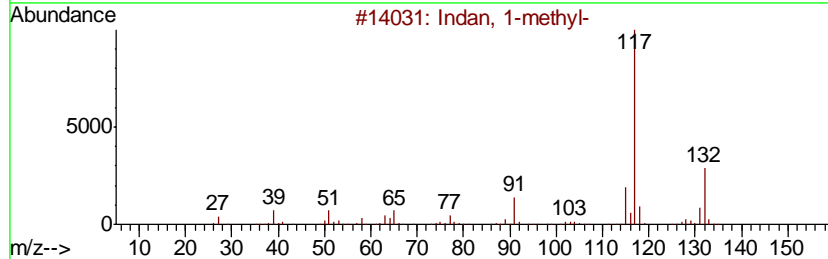
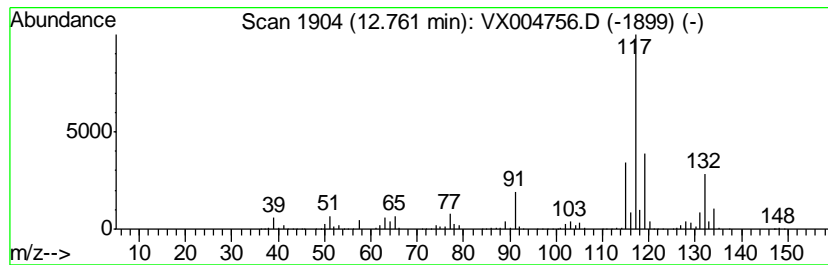
Quant Method : Z:\VOASRV\HPCHEM1\MSVOA\_X\METHOD\82X092618W.M  
 Quant Title : SW846 8260

TIC Library : C:\DATABASE\NIST11.L  
 TIC Integration Parameters: LSCINT.P

\*\*\*\*\*  
 Peak Number 4 Indan, 1-methyl- Concentration Rank 2

R.T.	EstConc	Area	Relative to ISTD	R.T.
12.76	110.20 ug/l	3136190	1,4-Dichlorobenzene-d4	12.08

Hit#	of	Tentative ID	MW	MolForm	CAS#	Qual
1	5	Indan, 1-methyl-	132	C10H12	000767-58-8	93
2		Benzene, 1-ethenyl-3-ethyl-	132	C10H12	007525-62-4	90
3		Benzene, 1-ethenyl-4-ethyl-	132	C10H12	003454-07-7	86
4		Benzene, (2-methyl-1-propenyl)-	132	C10H12	000768-49-0	83
5		Benzene, (2-methylcyclopropyl)-	132	C10H12	1000327-39-0	81





Data Path : Z:\VOASRV\HPCHEM1\MSVOA X\DATA\VX092618\  
 Data File : VX004756.D  
 Acq On : 27 Sep 2018 06:25  
 Operator : JC/MD  
 Sample : J5020-06  
 Misc : 5.0mL/MSVOA X/WATER  
 ALS Vial : 39 Sample Multiplier: 1

Instrument :  
 MSVOA\_X  
 ClientSampled :  
 T3-MW-3-9.0-091918

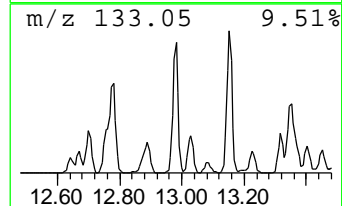
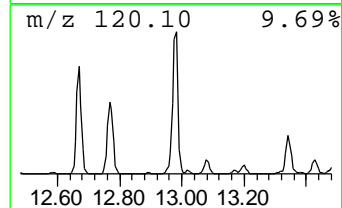
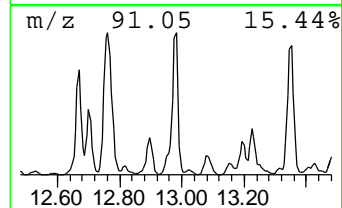
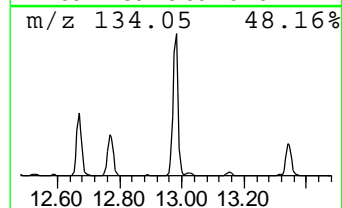
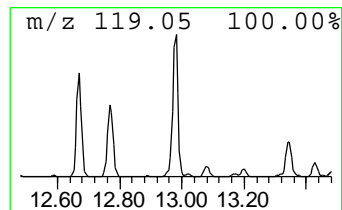
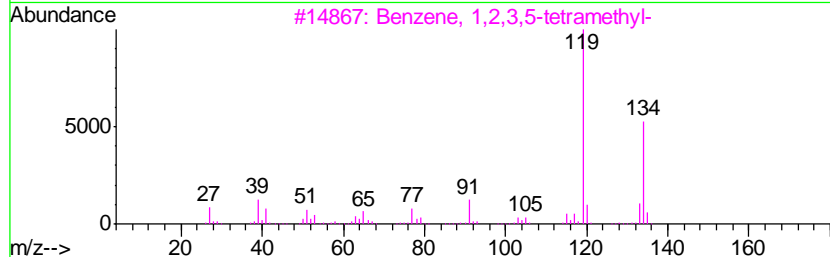
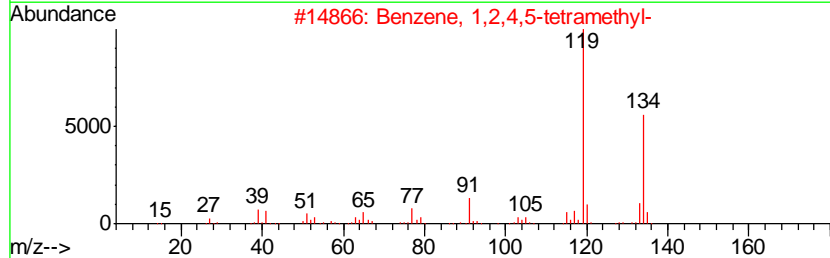
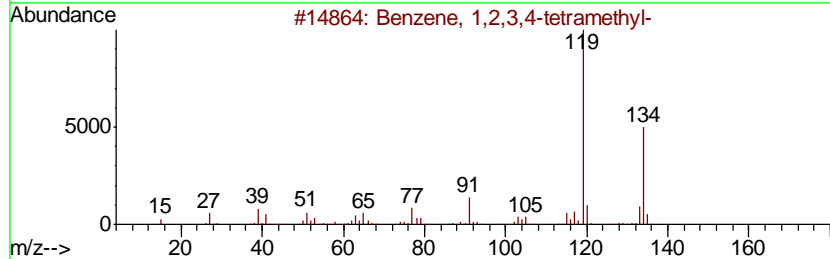
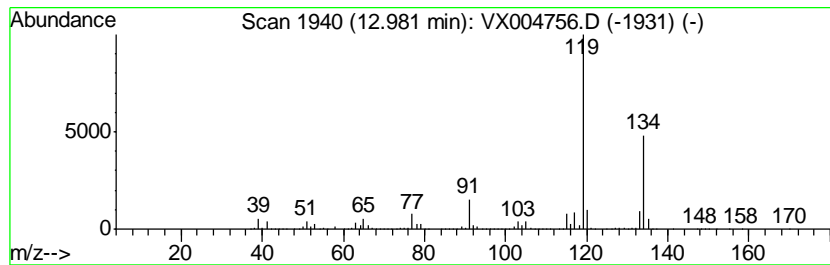
Quant Method : Z:\VOASRV\HPCHEM1\MSVOA\_X\METHOD\82X092618W.M  
 Quant Title : SW846 8260

TIC Library : C:\DATABASE\NIST11.L  
 TIC Integration Parameters: LSCINT.P

\*\*\*\*\*  
 Peak Number 5 Benzene, 1,2,3,4-tetramethyl- Concentration Rank 5

R.T.	EstConc	Area	Relative to ISTD	R.T.
12.98	80.69 ug/l	2296520	1,4-Dichlorobenzene-d4	12.08

Hit#	of	Tentative ID	MW	MolForm	CAS#	Qual
1	5	Benzene, 1,2,3,4-tetramethyl-	134	C10H14	000488-23-3	97
2		Benzene, 1,2,4,5-tetramethyl-	134	C10H14	000095-93-2	97
3		Benzene, 1,2,3,5-tetramethyl-	134	C10H14	000527-53-7	97
4		o-Cymene	134	C10H14	000527-84-4	95
5		Benzene, 1-ethyl-2,4-dimethyl-	134	C10H14	000874-41-9	94



Data Path : Z:\VOASRV\HPCHEM1\MSVOA X\DATA\VX092618\  
 Data File : VX004756.D  
 Acq On : 27 Sep 2018 06:25  
 Operator : JC/MD  
 Sample : J5020-06  
 Misc : 5.0mL/MSVOA X/WATER  
 ALS Vial : 39 Sample Multiplier: 1

Instrument :  
 MSVOA\_X  
 ClientSampleID :  
 T3-MW-3-9.0-091918

Quant Method : Z:\VOASRV\HPCHEM1\MSVOA\_X\METHOD\82X092618W.M  
 Quant Title : SW846 8260

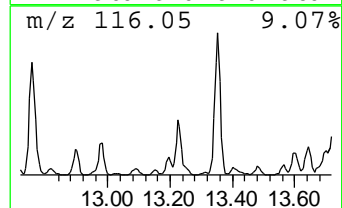
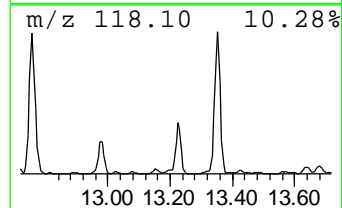
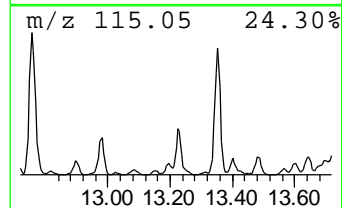
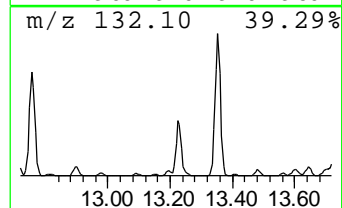
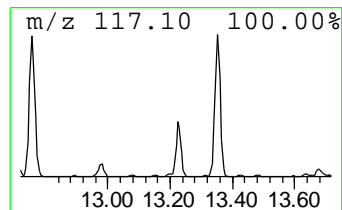
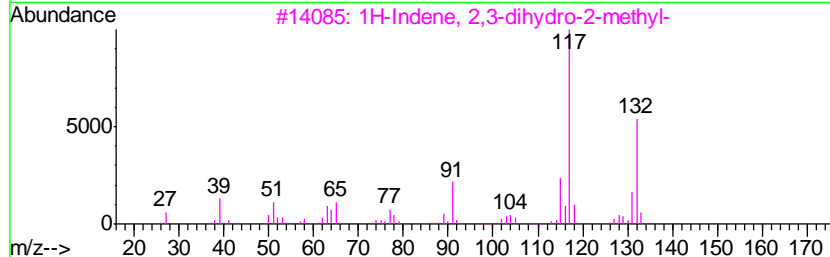
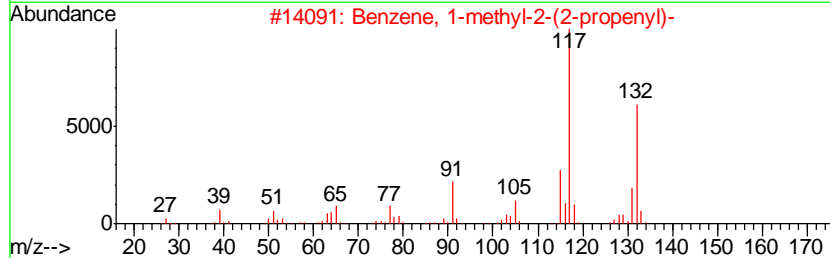
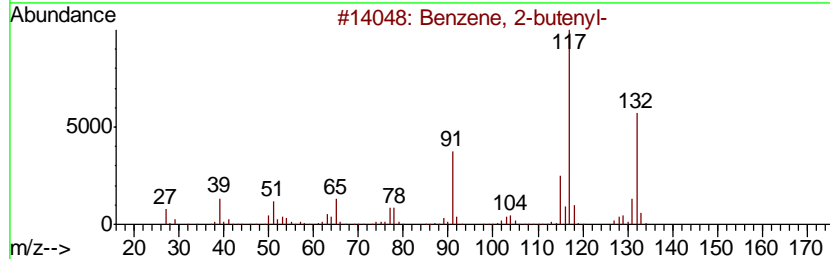
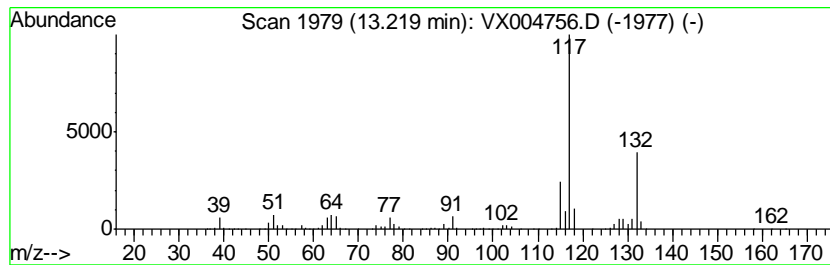
TIC Library : C:\DATABASE\NIST11.L  
 TIC Integration Parameters: LSCINT.P

\*\*\*\*\*  
 Peak Number 6 Benzene, 2-butenyl- Concentration Rank 9

R.T.	EstConc	Area	Relative to ISTD	R.T.
13.22	35.11 ug/l	999256	1,4-Dichlorobenzene-d4	12.08

Hit#	of	Tentative ID	MW	MolForm	CAS#	Qual
1	5	Benzene, 2-butenyl-	132	C10H12	001560-06-1	91
2		Benzene, 1-methyl-2-(2-propenyl)-	132	C10H12	001587-04-8	91
3		1H-Indene, 2,3-dihydro-2-methyl-	132	C10H12	000824-63-5	91
4		Indan, 1-methyl-	132	C10H12	000767-58-8	90
5		Benzene, (2-methyl-1-propenyl)-	132	C10H12	000768-49-0	90



Data Path : Z:\VOASRV\HPCHEM1\MSVOA X\DATA\VX092618\  
 Data File : VX004756.D  
 Acq On : 27 Sep 2018 06:25  
 Operator : JC/MD  
 Sample : J5020-06  
 Misc : 5.0mL/MSVOA X/WATER  
 ALS Vial : 39 Sample Multiplier: 1

Instrument :  
 MSVOA\_X  
 ClientSampleId :  
 T3-MW-3-9.0-091918

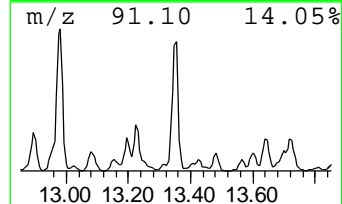
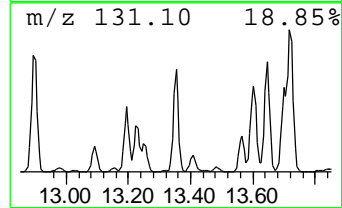
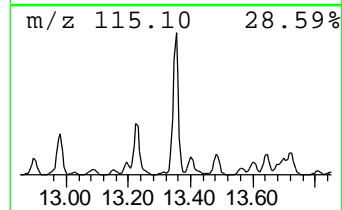
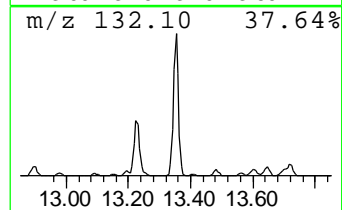
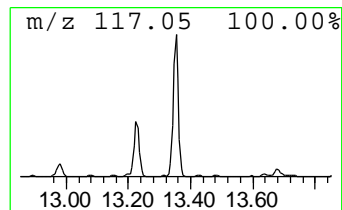
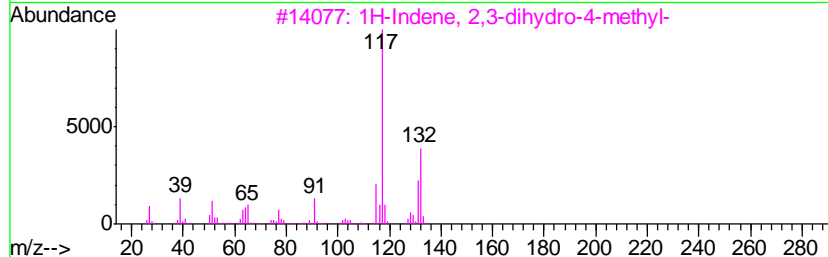
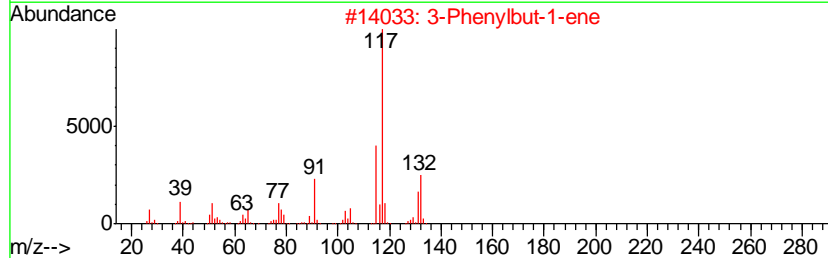
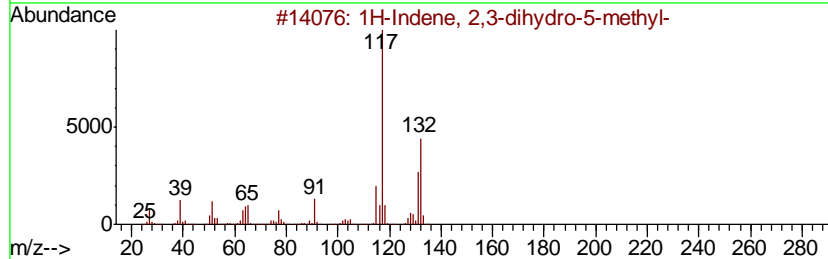
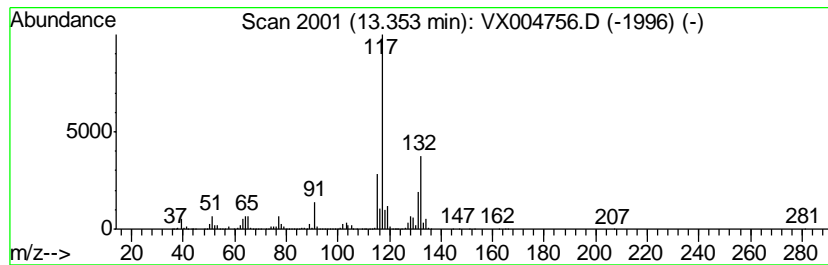
Quant Method : Z:\VOASRV\HPCHEM1\MSVOA\_X\METHOD\82X092618W.M  
 Quant Title : SW846 8260

TIC Library : C:\DATABASE\NIST11.L  
 TIC Integration Parameters: LSCINT.P

\*\*\*\*\*  
 Peak Number 7 1H-Indene, 2,3-dihydro-5-me... Concentration Rank 4

R.T.	EstConc	Area	Relative to ISTD	R.T.
13.35	96.86 ug/l	2756600	1,4-Dichlorobenzene-d4	12.08

Hit#	of	Tentative ID	MW	MolForm	CAS#	Qual
1	5	1H-Indene, 2,3-dihydro-5-methyl-	132	C10H12	000874-35-1	90
2		3-Phenylbut-1-ene	132	C10H12	000934-10-1	87
3		1H-Indene, 2,3-dihydro-4-methyl-	132	C10H12	000824-22-6	87
4		Benzene, 1-ethenyl-3-ethyl-	132	C10H12	007525-62-4	83
5		Indan, 1-methyl-	132	C10H12	000767-58-8	81



Data Path : Z:\VOASRV\HPCHEM1\MSVOA X\DATA\VX092618\  
 Data File : VX004756.D  
 Acq On : 27 Sep 2018 06:25  
 Operator : JC/MD  
 Sample : J5020-06  
 Misc : 5.0mL/MSVOA X/WATER  
 ALS Vial : 39 Sample Multiplier: 1

Instrument :  
 MSVOA\_X  
 ClientSampleID :  
 T3-MW-3-9.0-091918

Quant Method : Z:\VOASRV\HPCHEM1\MSVOA\_X\METHOD\82X092618W.M  
 Quant Title : SW846 8260

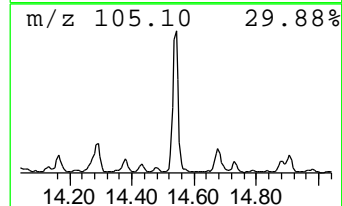
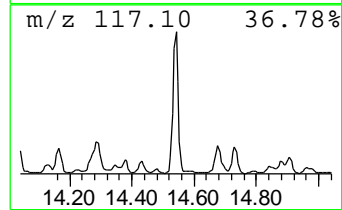
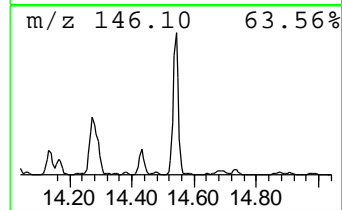
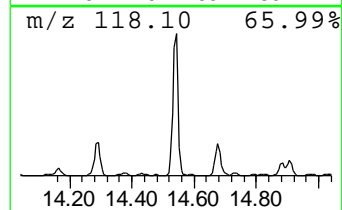
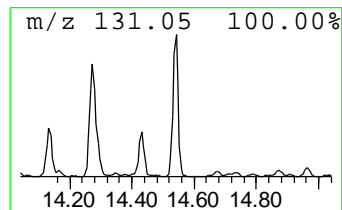
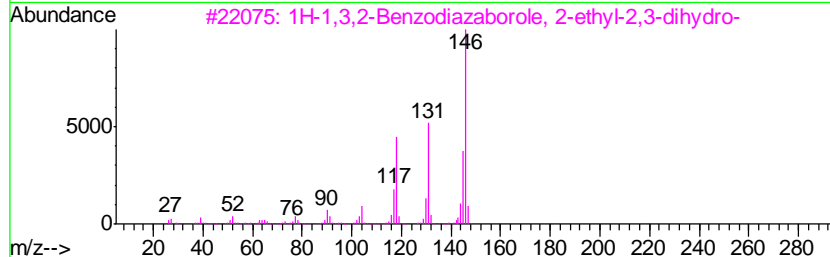
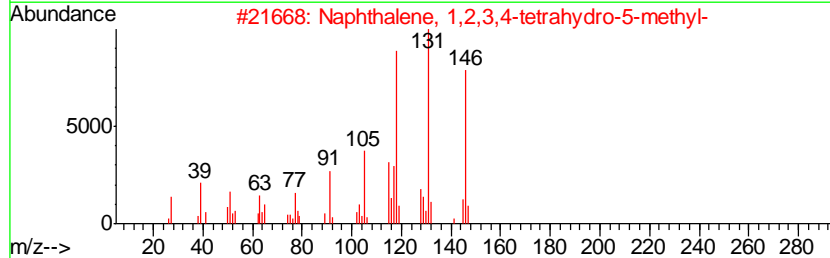
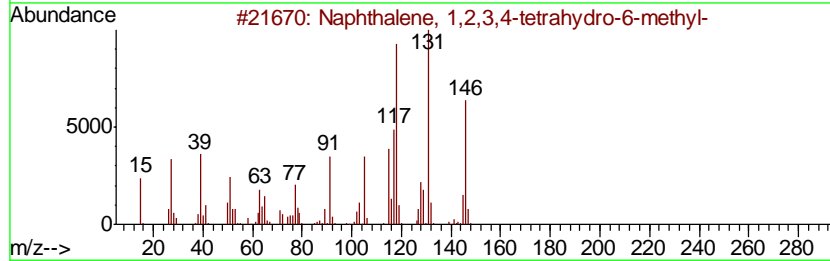
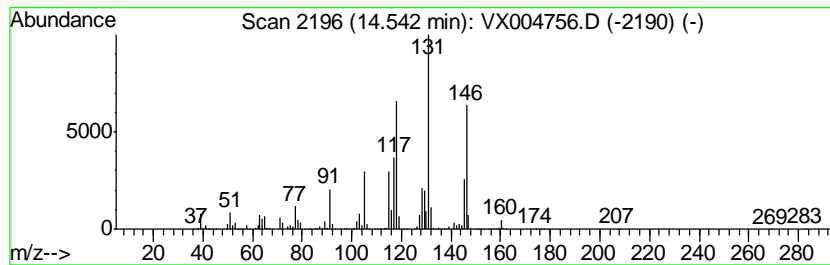
TIC Library : C:\DATABASE\NIST11.L  
 TIC Integration Parameters: LSCINT.P

\*\*\*\*\*  
 Peak Number 8 Naphthalene, 1,2,3,4-tetra... Concentration Rank 7

R.T.	EstConc	Area	Relative to ISTD	R.T.
14.54	38.94 ug/l	1108100	1,4-Dichlorobenzene-d4	12.08

Hit#	of	Tentative ID	MW	MolForm	CAS#	Qual
1	5	Naphthalene, 1,2,3,4-tetrahydro-...	146	C11H14	001680-51-9	95
2		Naphthalene, 1,2,3,4-tetrahydro-...	146	C11H14	002809-64-5	95
3		1H-1,3,2-Benzodiazaborole, 2-eth...	146	C8H11BN2	074663-81-3	90
4		Benzene, 2-ethenyl-1,3,5-trimethyl-	146	C11H14	000769-25-5	83
5		1H-Indene, 2,3-dihydro-4,7-dimet...	146	C11H14	006682-71-9	70



Data Path : Z:\VOASRV\HPCHEM1\MSVOA X\DATA\VX092618\  
 Data File : VX004756.D  
 Acq On : 27 Sep 2018 06:25  
 Operator : JC/MD  
 Sample : J5020-06  
 Misc : 5.0mL/MSVOA X/WATER  
 ALS Vial : 39 Sample Multiplier: 1

Instrument :  
 MSVOA\_X  
 ClientSampleId :  
 T3-MW-3-9.0-091918

Quant Method : Z:\VOASRV\HPCHEM1\MSVOA\_X\METHOD\82X092618W.M  
 Quant Title : SW846 8260

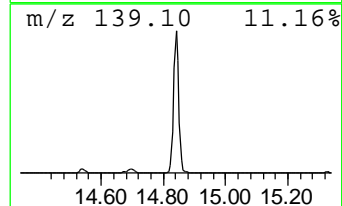
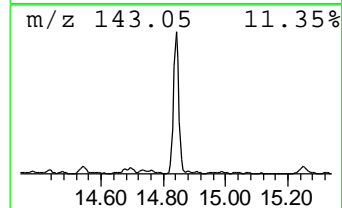
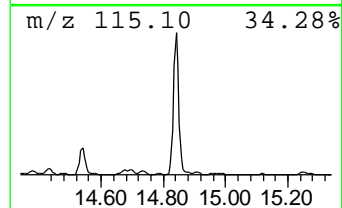
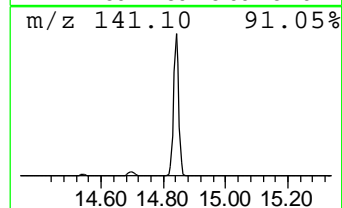
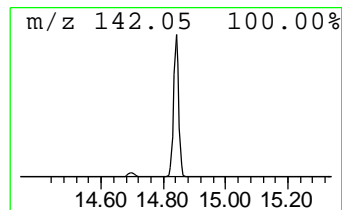
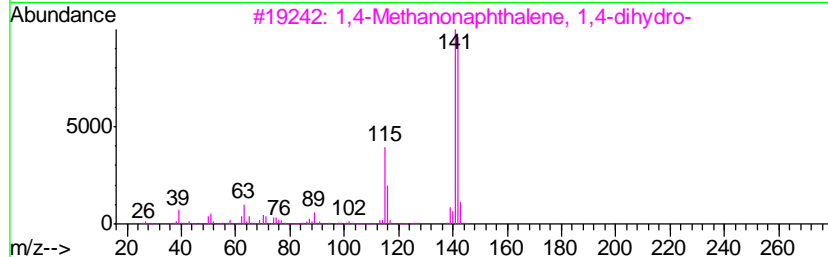
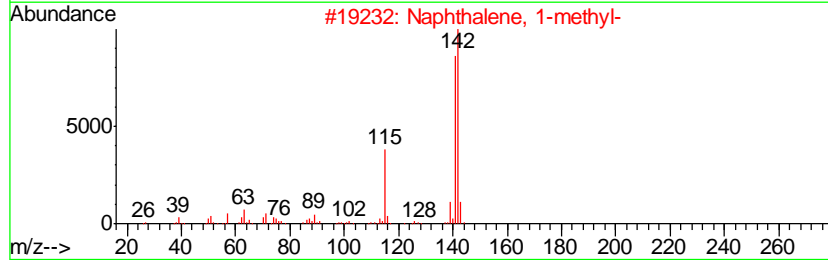
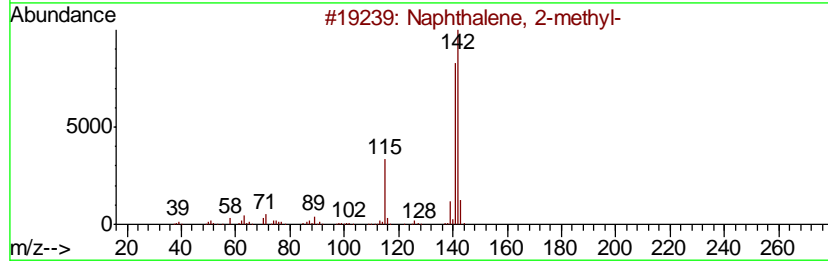
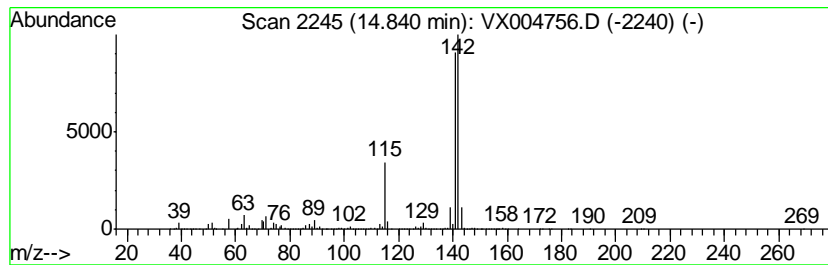
TIC Library : C:\DATABASE\NIST11.L  
 TIC Integration Parameters: LSCINT.P

\*\*\*\*\*  
 Peak Number 9 Naphthalene, 1-methyl- Concentration Rank 3

R.T.	EstConc	Area	Relative to ISTD	R.T.
14.84	104.71 ug/l	2979890	1,4-Dichlorobenzene-d4	12.08

Hit#	of	Tentative ID	MW	MolForm	CAS#	Qual
1	5	Naphthalene, 2-methyl-	142	C11H10	000091-57-6	96
2		Naphthalene, 1-methyl-	142	C11H10	000090-12-0	96
3		1,4-Methanonaphthalene, 1,4-dihy...	142	C11H10	004453-90-1	91
4		Benzocycloheptatriene	142	C11H10	000264-09-5	91
5		Bicyclo[4.4.1]undeca-1,3,5,7,9-p...	142	C11H10	002443-46-1	64



Data Path : Z:\VOASRV\HPCHEM1\MSVOA X\DATA\VX092618\  
 Data File : VX004756.D  
 Acq On : 27 Sep 2018 06:25  
 Operator : JC/MD  
 Sample : J5020-06  
 Misc : 5.0mL/MSVOA X/WATER  
 ALS Vial : 39 Sample Multiplier: 1

Instrument :  
 MSVOA\_X  
 ClientSampleID :  
 T3-MW-3-9.0-091918

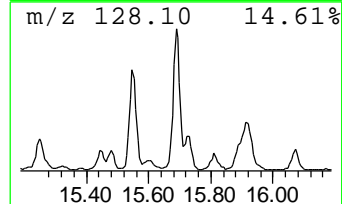
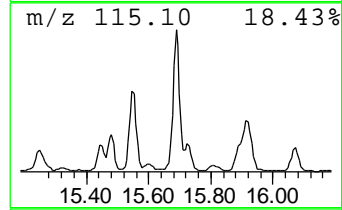
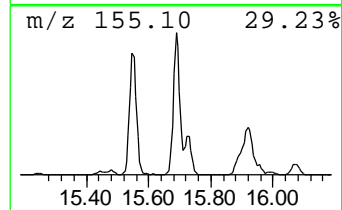
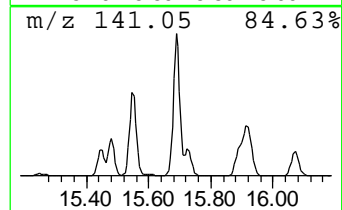
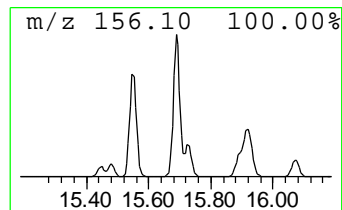
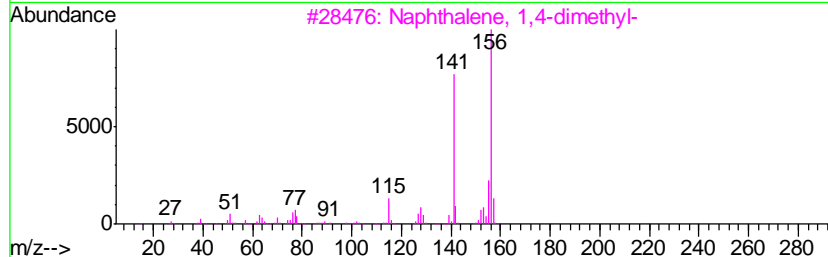
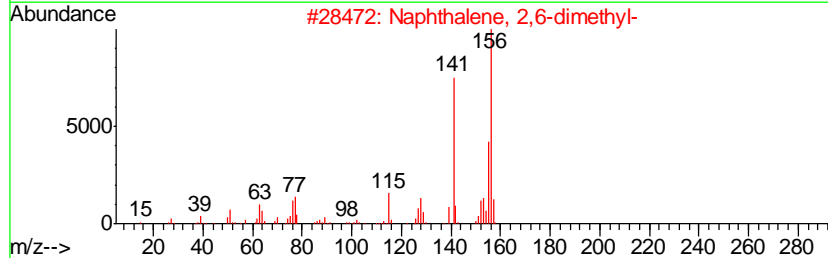
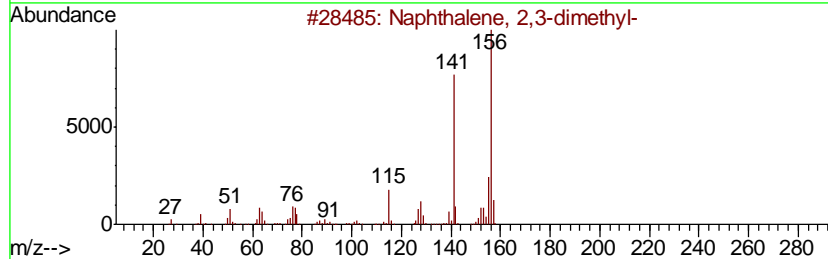
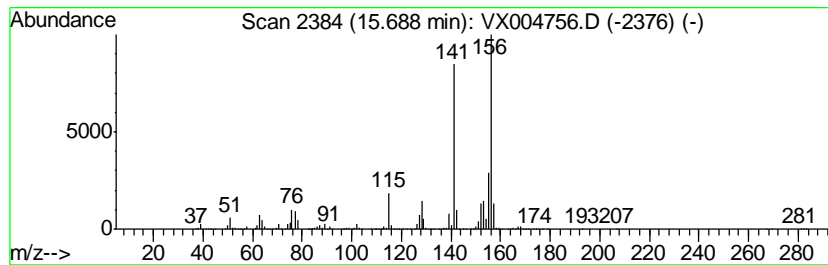
Quant Method : Z:\VOASRV\HPCHEM1\MSVOA\_X\METHOD\82X092618W.M  
 Quant Title : SW846 8260

TIC Library : C:\DATABASE\NIST11.L  
 TIC Integration Parameters: LSCINT.P

\*\*\*\*\*  
 Peak Number 10 Naphthalene, 2,3-dimethyl- Concentration Rank 8

R.T.	EstConc	Area	Relative to ISTD	R.T.
15.69	38.12 ug/l	1084750	1,4-Dichlorobenzene-d4	12.08

Hit#	of	Tentative ID	MW	MolForm	CAS#	Qual
1	5	Naphthalene, 2,3-dimethyl-	156	C12H12	000581-40-8	97
2		Naphthalene, 2,6-dimethyl-	156	C12H12	000581-42-0	97
3		Naphthalene, 1,4-dimethyl-	156	C12H12	000571-58-4	97
4		Naphthalene, 1,6-dimethyl-	156	C12H12	000575-43-9	97
5		Naphthalene, 2,7-dimethyl-	156	C12H12	000582-16-1	96



Data Path : Z:\VOASRV\HPCHEM1\MSVOA\_X\DATA\VX092618\  
 Data File : VX004756.D  
 Acq On : 27 Sep 2018 06:25  
 Operator : JC/MD  
 Sample : J5020-06  
 Misc : 5.0mL/MSVOA\_X/WATER  
 ALS Vial : 39 Sample Multiplier: 1

Instrument :  
 MSVOA\_X  
 ClientSampleId :  
 T3-MW-3-9.0-091918

Quant Method : Z:\VOASRV\HPCHEM1\MSVOA\_X\METHOD\82X092618W.M  
 Quant Title : SW846 8260

TIC Library : C:\DATABASE\NIST11.L  
 TIC Integration Parameters: LSCINT.P

TIC Top Hit name	RT	EstConc	Units	Response	--Internal Standard--			
					#	RT	Resp	Conc
Indane	12.30	137.9	ug/l	3925540	4	12.08	1422980	50.0
Benzene, 1-ethyl-...	12.67	51.3	ug/l	1458820	4	12.08	1422980	50.0
Benzene, 1-methyl...	12.70	33.0	ug/l	940077	4	12.08	1422980	50.0
Indan, 1-methyl-	12.76	110.2	ug/l	3136190	4	12.08	1422980	50.0
Benzene, 1,2,3,4-...	12.98	80.7	ug/l	2296520	4	12.08	1422980	50.0
Benzene, 2-butenyl-	13.22	35.1	ug/l	999256	4	12.08	1422980	50.0
1H-Indene, 2,3-di...	13.35	96.9	ug/l	2756600	4	12.08	1422980	50.0
Naphthalene, 1,2,...	14.54	38.9	ug/l	1108100	4	12.08	1422980	50.0
Naphthalene, 1-me...	14.84	104.7	ug/l	2979890	4	12.08	1422980	50.0
Naphthalene, 2,3-...	15.69	38.1	ug/l	1084750	4	12.08	1422980	50.0