

Data Path : Z:\voasrv\HPCHEM1\MSVOA_X\Data\VX092624\
 Data File : VX043172.D
 Acq On : 26 Sep 2024 12:52
 Operator : JC/MD
 Sample : P4164-18RE
 Misc : 5.0mL/MSVOA_X/WATER
 ALS Vial : 10 Sample Multiplier: 1

Instrument :
 MSVOA_X
 ClientSampleId :

Quant Time: Sep 27 01:40:38 2024
 Quant Method : Z:\voasrv\HPCHEM1\MSVOA_X\Method\82X092324W.M
 Quant Title : SW846 8260
 QLast Update : Tue Sep 24 03:13:52 2024
 Response via : Initial Calibration

Compound	R.T.	QIon	Response	Conc	Units	Dev(Min)

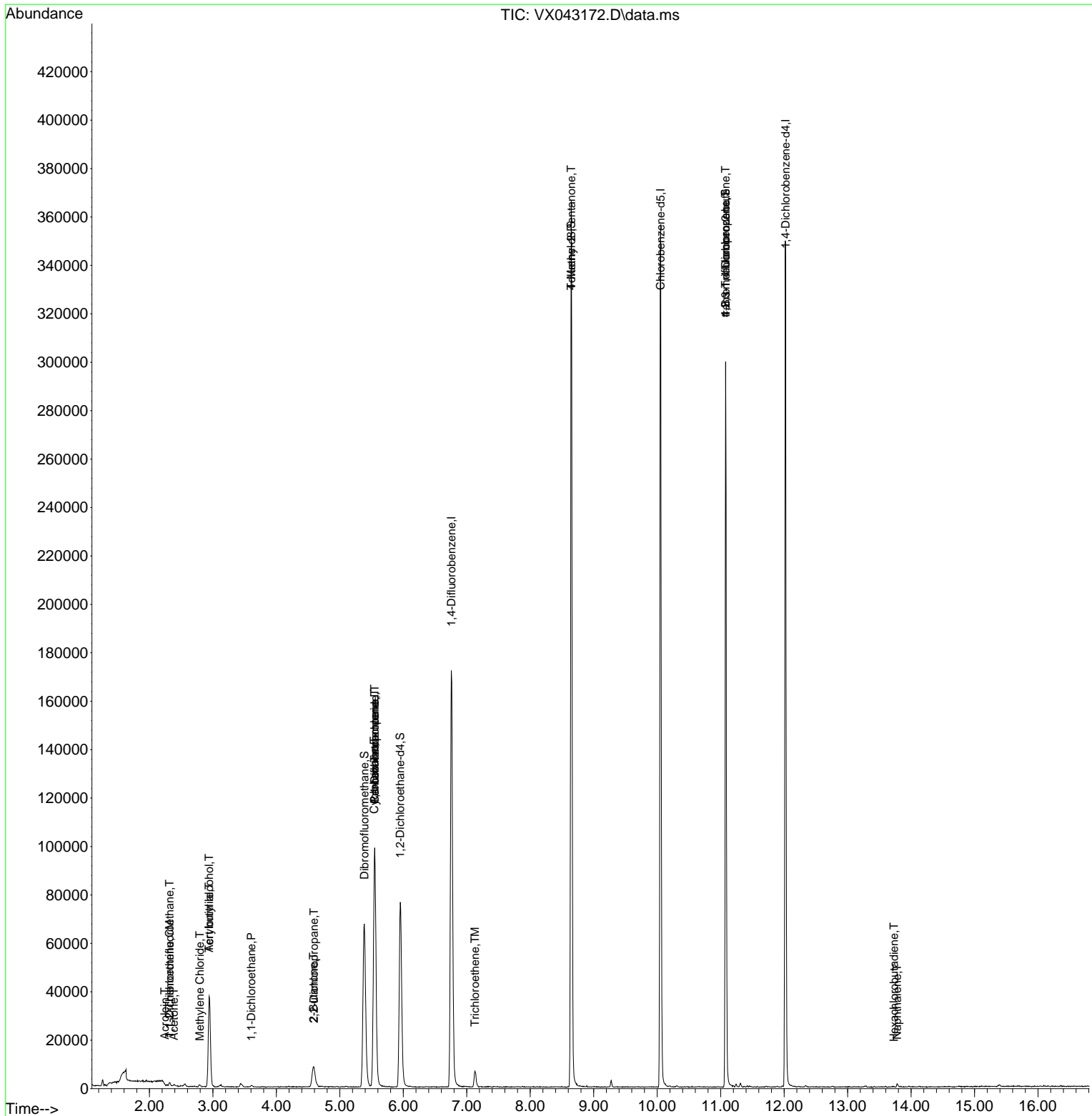
Internal Standards						
1) Pentafluorobenzene	5.550	168	89003	50.000	ug/l	0.00
34) 1,4-Difluorobenzene	6.757	114	174450	50.000	ug/l	0.00
63) Chlorobenzene-d5	10.055	117	159644	50.000	ug/l	0.00
72) 1,4-Dichlorobenzene-d4	12.024	152	70373	50.000	ug/l	0.00
System Monitoring Compounds						
33) 1,2-Dichloroethane-d4	5.952	65	77305	52.290	ug/l	0.00
Spiked Amount	50.000	Range 74 - 125	Recovery	=	104.580%	
35) Dibromofluoromethane	5.385	113	59893	48.669	ug/l	0.00
Spiked Amount	50.000	Range 75 - 124	Recovery	=	97.340%	
50) Toluene-d8	8.647	98	212480	51.034	ug/l	0.00
Spiked Amount	50.000	Range 86 - 113	Recovery	=	102.060%	
62) 4-Bromofluorobenzene	11.079	95	79325	47.310	ug/l	0.00
Spiked Amount	50.000	Range 77 - 121	Recovery	=	94.620%	
Target Compounds						
						Qvalue
9) 1,1,2-Trichlorotrifluo...	2.318	101	342	0.347	ug/l #	88
11) Tert butyl alcohol	2.940	59	22250	67.407	ug/l #	75
12) 1,1-Dichloroethene	2.318	96	246	0.261	ug/l #	63
13) Acrolein	2.239	56	19	0.437	ug/l #	1
15) Acrylonitrile	2.940	53	512	0.894	ug/l #	16
16) Acetone	2.386	43	897	1.297	ug/l	89
20) Methylene Chloride	2.794	84	390	0.355	ug/l #	65
24) 1,1-Dichloroethane	3.605	63	910	0.480	ug/l #	81
25) 2-Butanone	4.586	43	799	0.897	ug/l #	49
26) 2,2-Dichloropropane	4.592	77	778	0.405	ug/l #	54
31) Cyclohexane	5.544	56	2190	1.506	ug/l #	33
36) 1,1-Dichloropropene	5.550	75	7907	5.229	ug/l #	48
38) Carbon Tetrachloride	5.550	117	9717	4.988	ug/l #	15
44) Trichloroethene	7.129	130	2712	2.221	ug/l	99
51) 4-Methyl-2-Pentanone	8.647	43	1147	0.589	ug/l #	1
76) 1,2,3-Trichloropropane	11.079	75	43371	28.988	ug/l #	34
81) trans-1,4-Dichloro-2-b...	11.079	75	43371	69.066	ug/l #	7
94) Hexachlorobutadiene	13.731	225	120	0.202	ug/l #	53
95) Naphthalene	13.780	128	1496	0.305	ug/l #	84

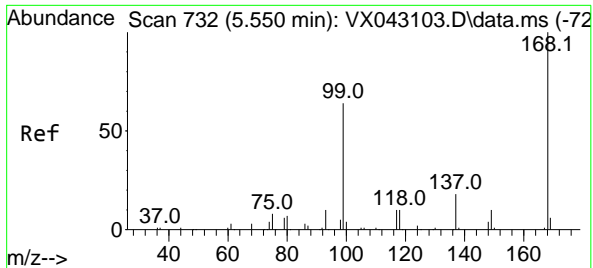
(#) = qualifier out of range (m) = manual integration (+) = signals summed

Data Path : Z:\voasrv\HPCHEM1\MSVOA_X\Data\VX092624\
 Data File : VX043172.D
 Acq On : 26 Sep 2024 12:52
 Operator : JC/MD
 Sample : P4164-18RE
 Misc : 5.0mL/MSVOA_X/WATER
 ALS Vial : 10 Sample Multiplier: 1

Instrument :
 MSVOA_X
 ClientSampleId :

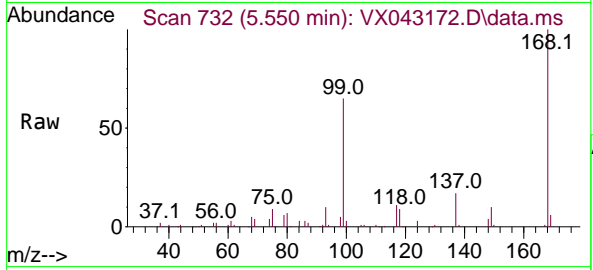
Quant Time: Sep 27 01:40:38 2024
 Quant Method : Z:\voasrv\HPCHEM1\MSVOA_X\Method\82X092324W.M
 Quant Title : SW846 8260
 QLast Update : Tue Sep 24 03:13:52 2024
 Response via : Initial Calibration



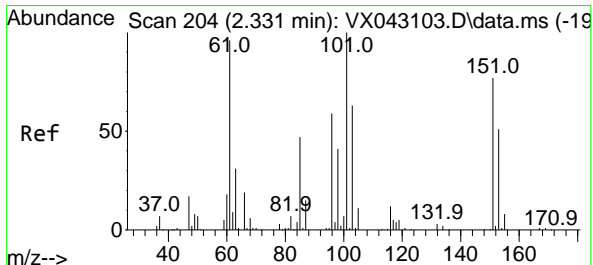
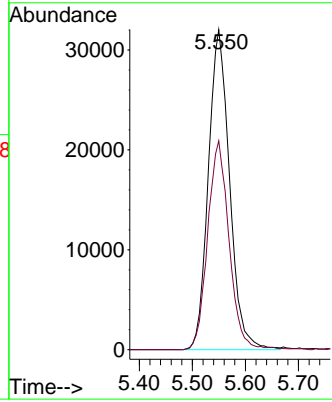
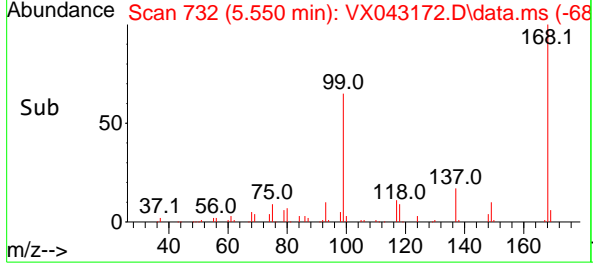


#1
 Pentafluorobenzene
 Concen: 50.000 ug/l
 RT: 5.550 min Scan# 71
 Delta R.T. -0.000 min
 Lab File: VX043172.D
 Acq: 26 Sep 2024 12:52

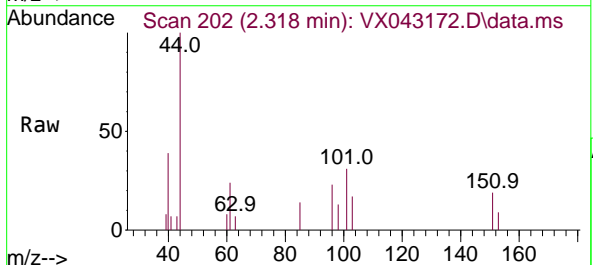
Instrument : MSVOA_X
 ClientSampleId :



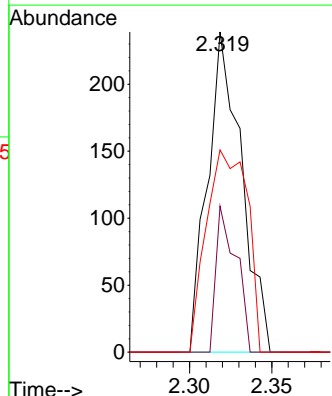
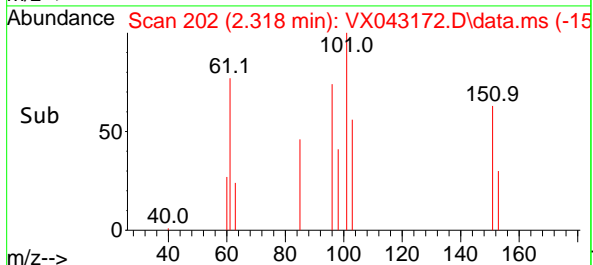
Tgt Ion:168 Resp: 89003
 Ion Ratio Lower Upper
 168 100
 99 65.2 50.8 76.2

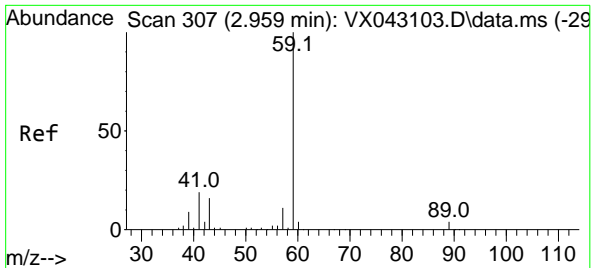


#9
 1,1,2-Trichlorotrifluoroethane
 Concen: 0.347 ug/l
 RT: 2.318 min Scan# 202
 Delta R.T. -0.012 min
 Lab File: VX043172.D
 Acq: 26 Sep 2024 12:52



Tgt Ion:101 Resp: 342
 Ion Ratio Lower Upper
 101 100
 85 27.2 37.0 55.4#
 151 76.6 60.2 90.4

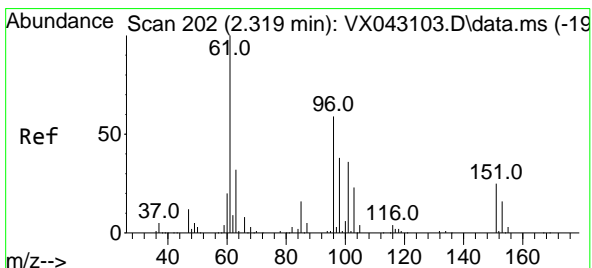
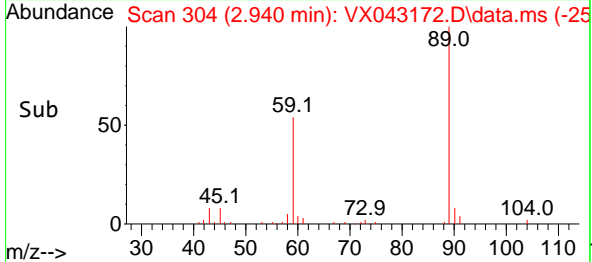
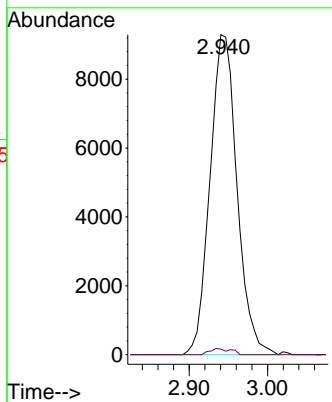
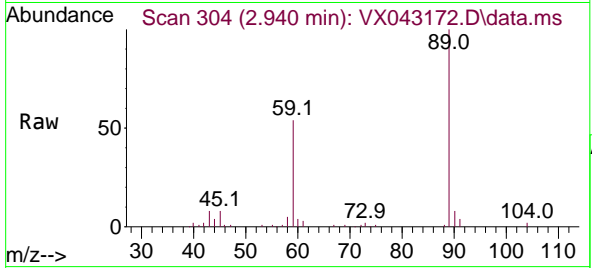




#11
 Tert butyl alcohol
 Concen: 67.407 ug/l
 RT: 2.940 min Scan# 304
 Delta R.T. -0.019 min
 Lab File: VX043172.D
 Acq: 26 Sep 2024 12:52

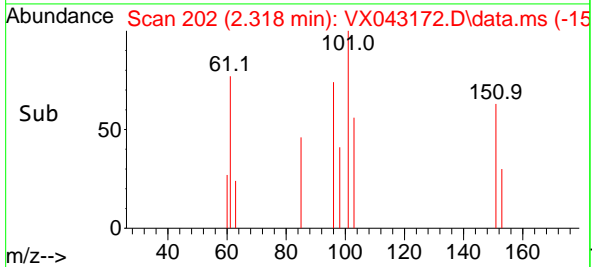
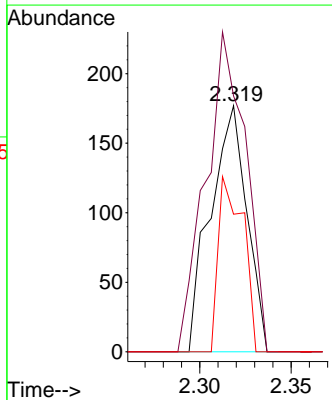
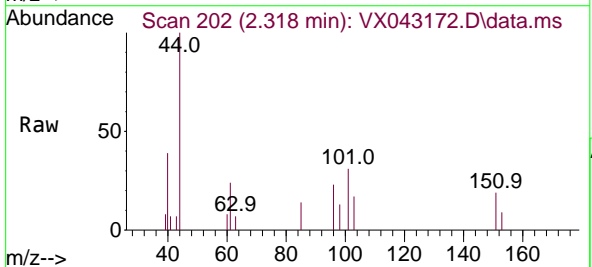
Instrument : MSVOA_X
 ClientSampleId :

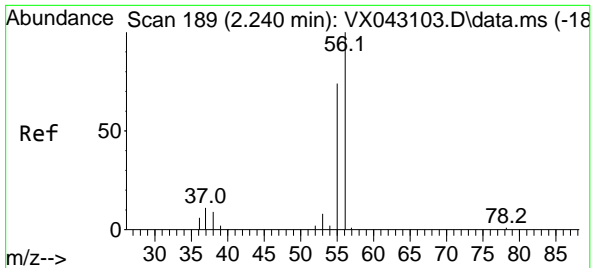
Tgt Ion: 59 Resp: 22250
 Ion Ratio Lower Upper
 59 100
 57 1.5 8.6 13.0#



#12
 1,1-Dichloroethene
 Concen: 0.261 ug/l
 RT: 2.318 min Scan# 202
 Delta R.T. -0.000 min
 Lab File: VX043172.D
 Acq: 26 Sep 2024 12:52

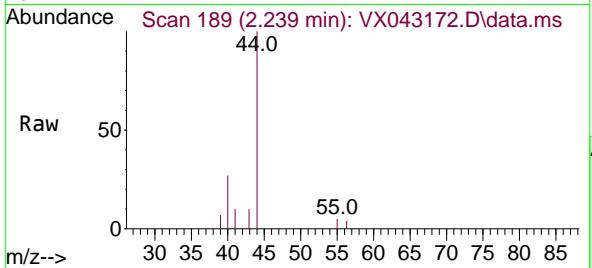
Tgt Ion: 96 Resp: 246
 Ion Ratio Lower Upper
 96 100
 61 104.0 134.7 202.1#
 98 55.9 51.6 77.4



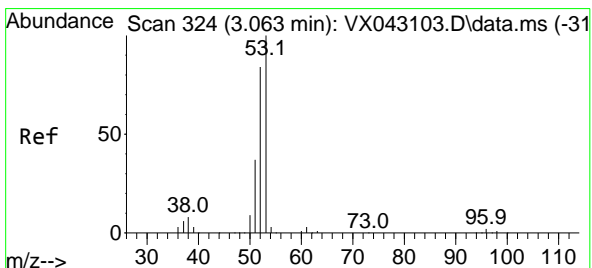
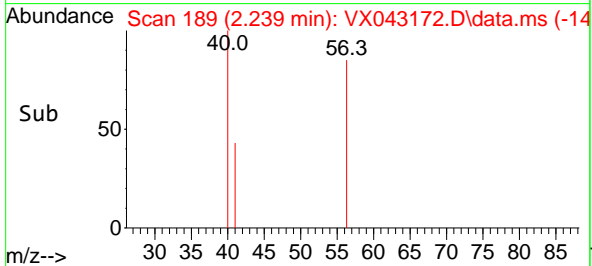
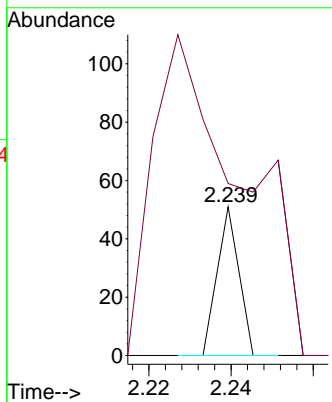


#13
 Acrolein
 Concen: 0.437 ug/l
 RT: 2.239 min Scan# 11
 Delta R.T. -0.000 min
 Lab File: VX043172.D
 Acq: 26 Sep 2024 12:52

Instrument :
 MSVOA_X
 ClientSampleId :

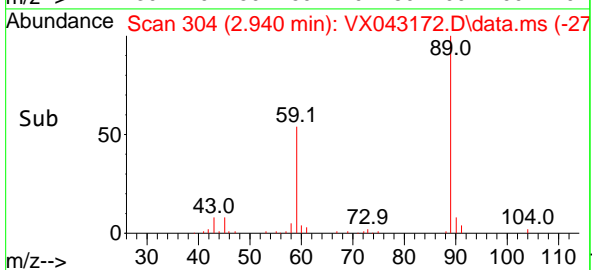
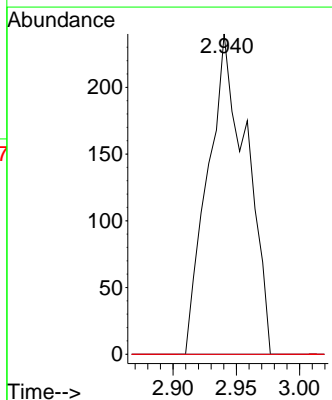
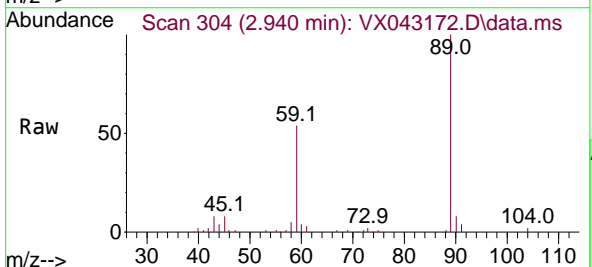


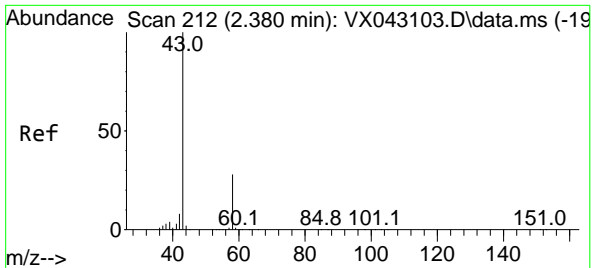
Tgt Ion: 56 Resp: 19
 Ion Ratio Lower Upper
 56 100
 55 863.2 55.8 83.6#



#15
 Acrylonitrile
 Concen: 0.894 ug/l
 RT: 2.940 min Scan# 304
 Delta R.T. -0.122 min
 Lab File: VX043172.D
 Acq: 26 Sep 2024 12:52

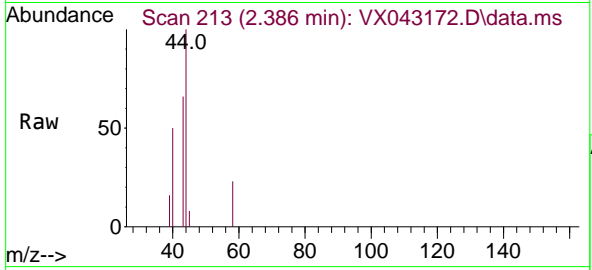
Tgt Ion: 53 Resp: 512
 Ion Ratio Lower Upper
 53 100
 52 0.0 67.8 101.6#
 51 0.0 30.6 45.8#



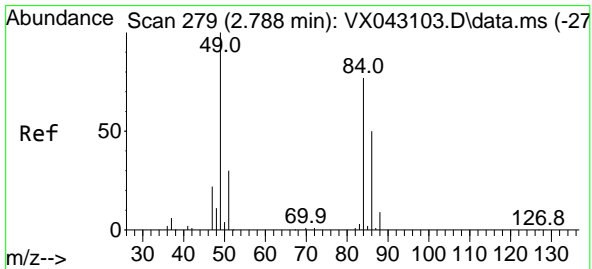
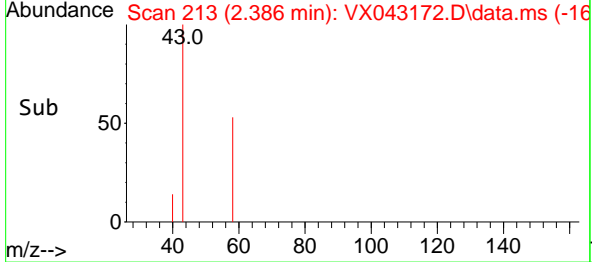
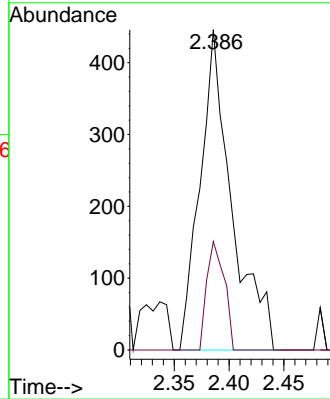


#16
 Acetone
 Concen: 1.297 ug/l
 RT: 2.386 min Scan# 21
 Delta R.T. 0.006 min
 Lab File: VX043172.D
 Acq: 26 Sep 2024 12:52

Instrument :
 MSVOA_X
 ClientSampleId :

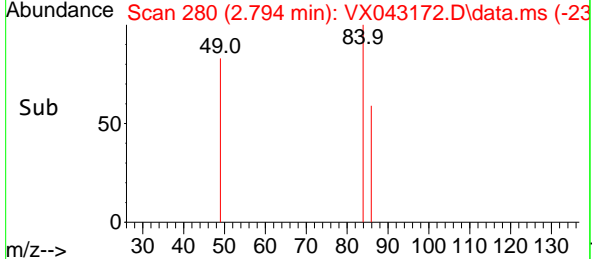
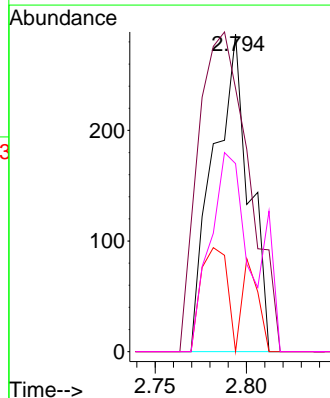
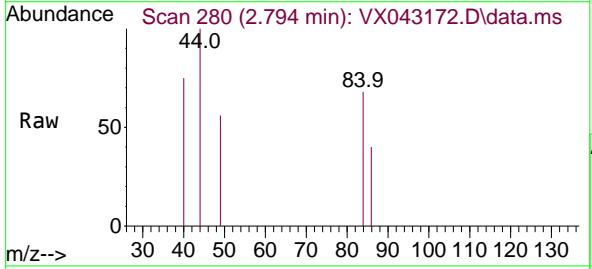


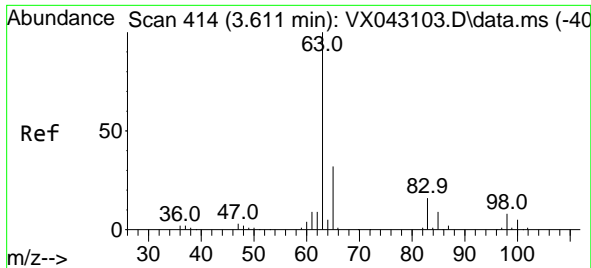
Tgt Ion: 43 Resp: 897
 Ion Ratio Lower Upper
 43 100
 58 33.9 22.6 34.0



#20
 Methylene Chloride
 Concen: 0.355 ug/l
 RT: 2.794 min Scan# 280
 Delta R.T. 0.006 min
 Lab File: VX043172.D
 Acq: 26 Sep 2024 12:52

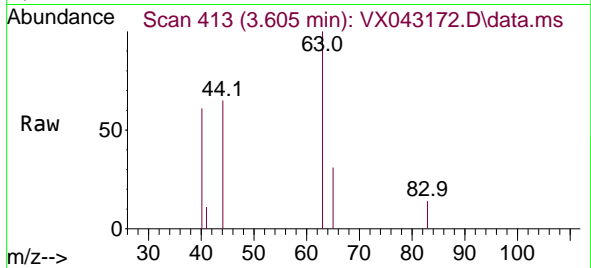
Tgt Ion: 84 Resp: 390
 Ion Ratio Lower Upper
 84 100
 49 82.9 104.1 156.1#
 51 0.0 31.1 46.7#
 86 59.2 52.1 78.1



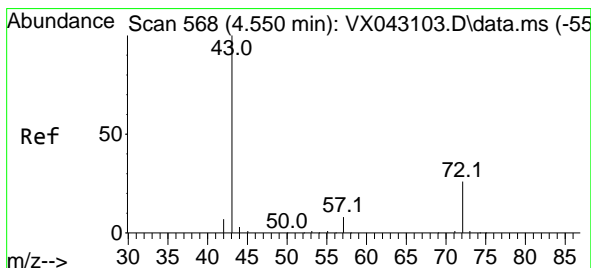
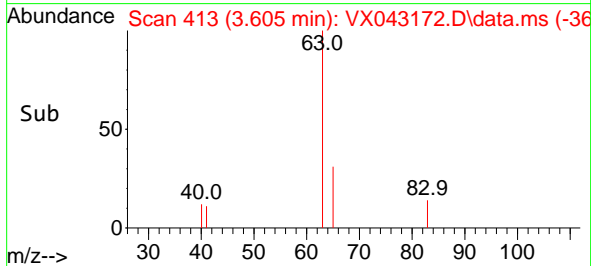
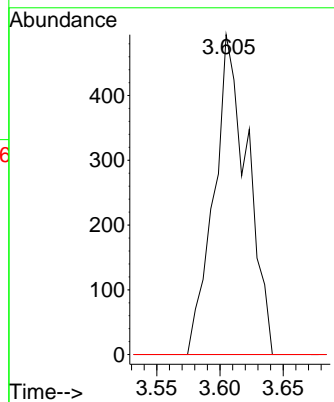


#24
 1,1-Dichloroethane
 Concen: 0.480 ug/l
 RT: 3.605 min Scan# 411
 Delta R.T. -0.006 min
 Lab File: VX043172.D
 Acq: 26 Sep 2024 12:52

Instrument :
 MSVOA_X
 ClientSampleId :

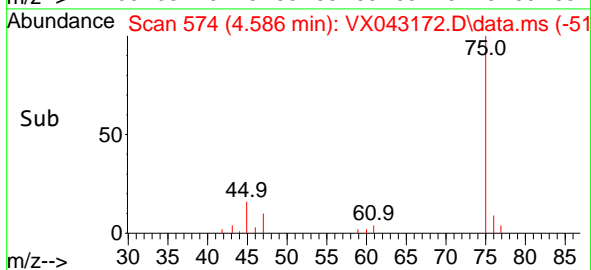
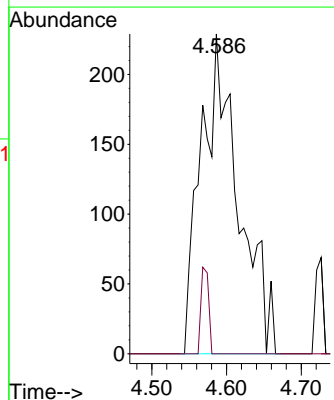
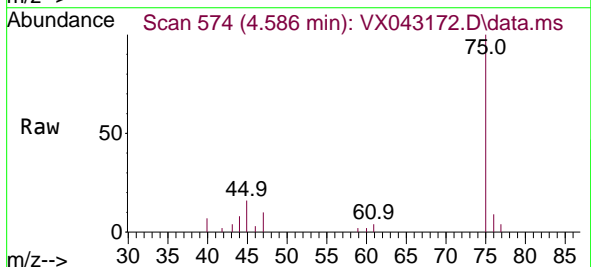


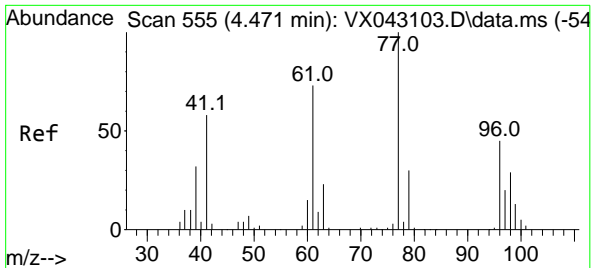
Tgt Ion: 63 Resp: 910
 Ion Ratio Lower Upper
 63 100
 98 0.0 3.9 11.5#
 100 0.0 2.5 7.6#



#25
 2-Butanone
 Concen: 0.897 ug/l
 RT: 4.586 min Scan# 574
 Delta R.T. 0.036 min
 Lab File: VX043172.D
 Acq: 26 Sep 2024 12:52

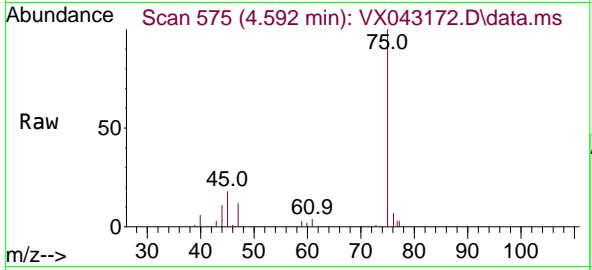
Tgt Ion: 43 Resp: 799
 Ion Ratio Lower Upper
 43 100
 72 0.0 20.7 31.1#



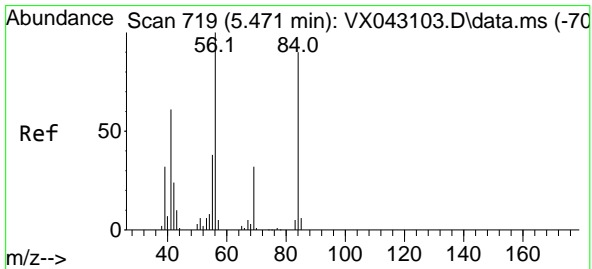
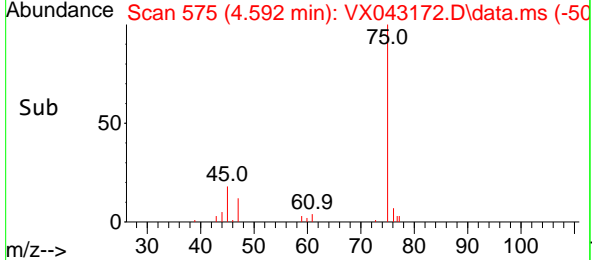
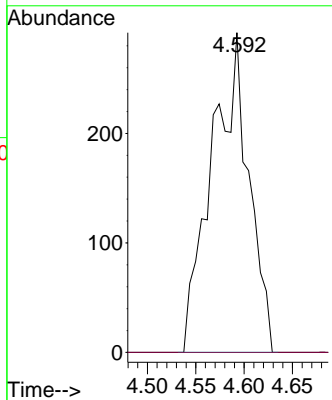


#26
 2,2-Dichloropropane
 Concen: 0.405 ug/l
 RT: 4.592 min Scan# 51
 Delta R.T. 0.122 min
 Lab File: VX043172.D
 Acq: 26 Sep 2024 12:52

Instrument :
 MSVOA_X
 ClientSampleId :

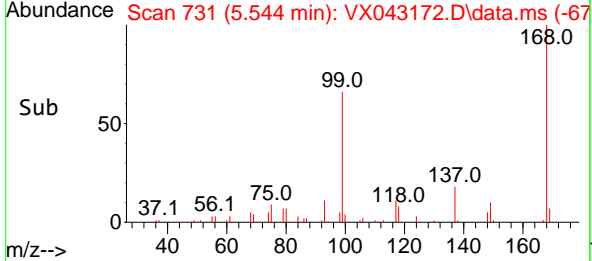
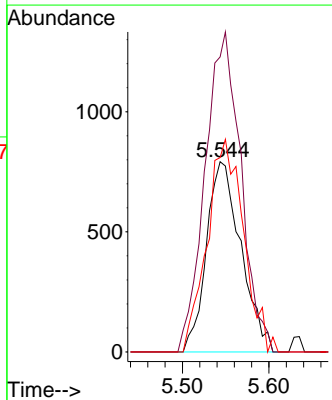
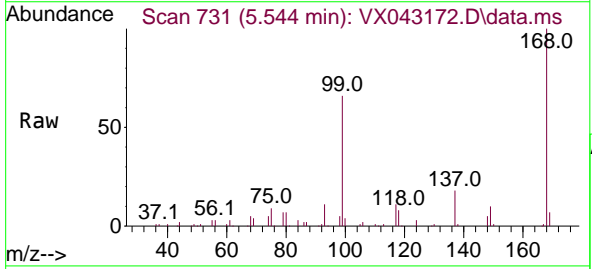


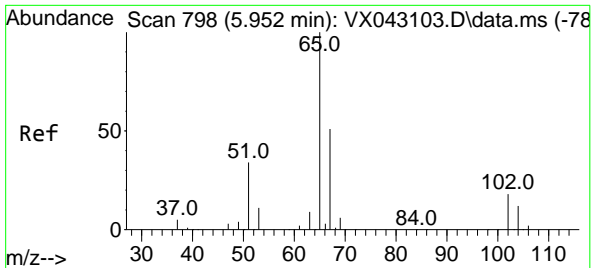
Tgt Ion: 77 Resp: 778
 Ion Ratio Lower Upper
 77 100
 97 0.0 10.8 32.3#



#31
 Cyclohexane
 Concen: 1.506 ug/l
 RT: 5.544 min Scan# 731
 Delta R.T. 0.073 min
 Lab File: VX043172.D
 Acq: 26 Sep 2024 12:52

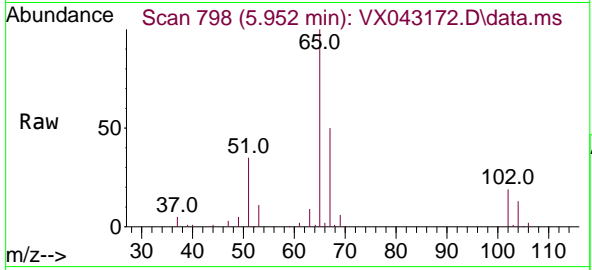
Tgt Ion: 56 Resp: 2190
 Ion Ratio Lower Upper
 56 100
 69 155.1 25.8 38.6#
 84 102.1 72.4 108.6



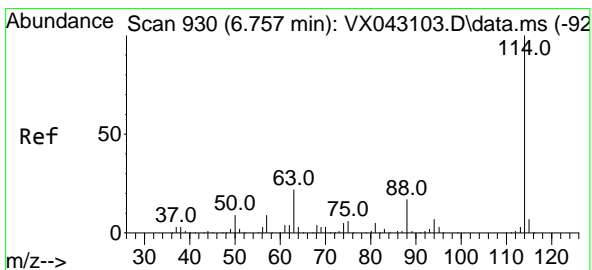
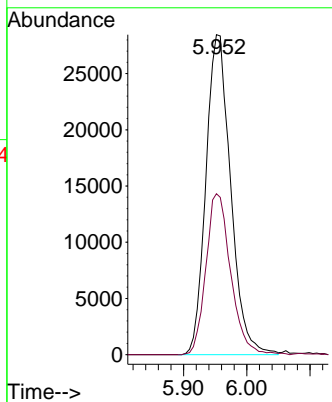
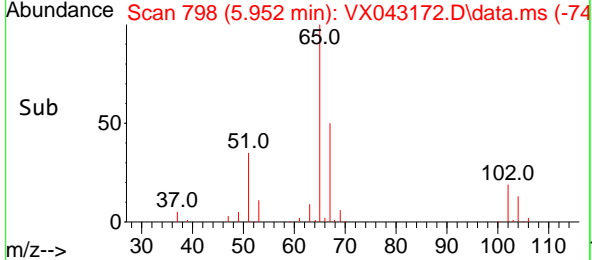


#33
 1,2-Dichloroethane-d4
 Concen: 52.290 ug/l
 RT: 5.952 min Scan# 798
 Delta R.T. -0.000 min
 Lab File: VX043172.D
 Acq: 26 Sep 2024 12:52

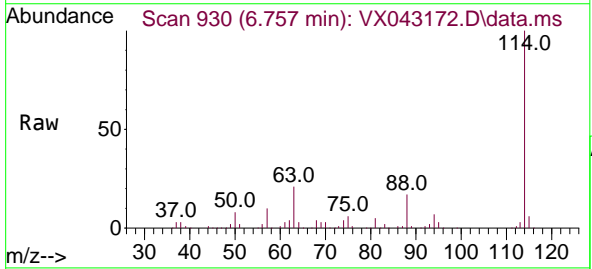
Instrument : MSVOA_X
 ClientSampleId :



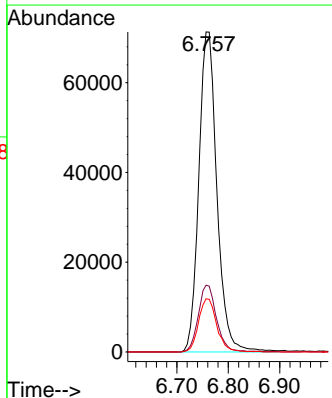
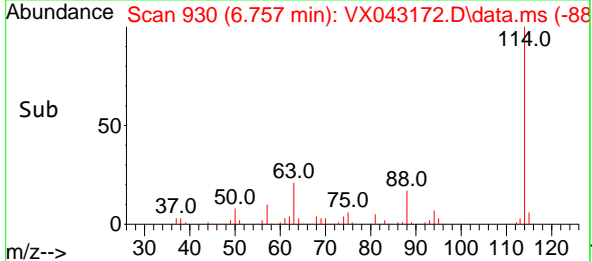
Tgt Ion: 65 Resp: 77305
 Ion Ratio Lower Upper
 65 100
 67 50.4 0.0 99.0

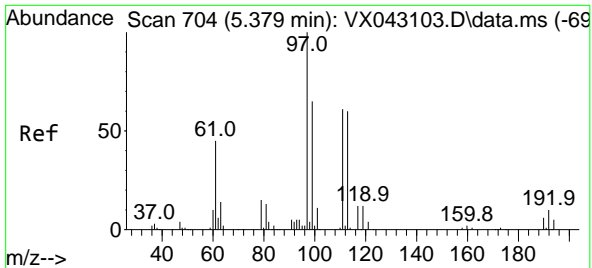


#34
 1,4-Difluorobenzene
 Concen: 50.000 ug/l
 RT: 6.757 min Scan# 930
 Delta R.T. -0.000 min
 Lab File: VX043172.D
 Acq: 26 Sep 2024 12:52



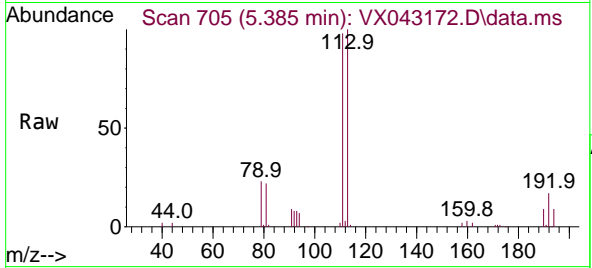
Tgt Ion: 114 Resp: 174450
 Ion Ratio Lower Upper
 114 100
 63 20.8 0.0 43.2
 88 16.6 0.0 33.4



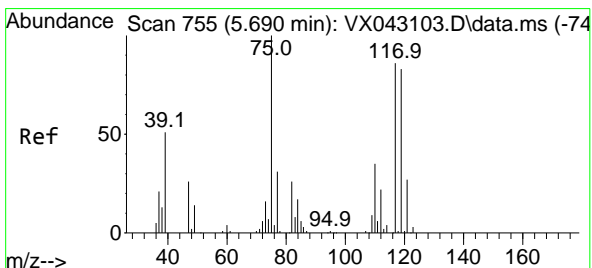
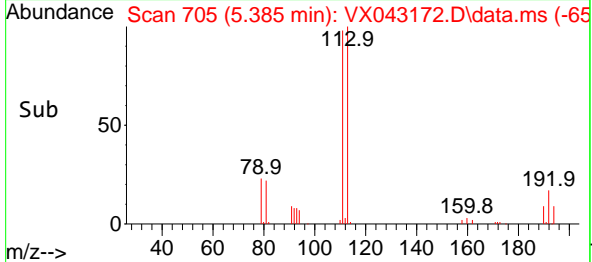
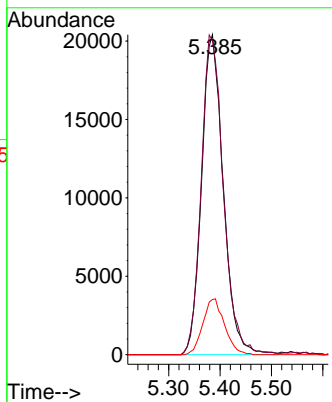


#35
 Dibromofluoromethane
 Concen: 48.669 ug/l
 RT: 5.385 min Scan# 705
 Delta R.T. 0.006 min
 Lab File: VX043172.D
 Acq: 26 Sep 2024 12:52

Instrument : MSVOA_X
 ClientSampleId :

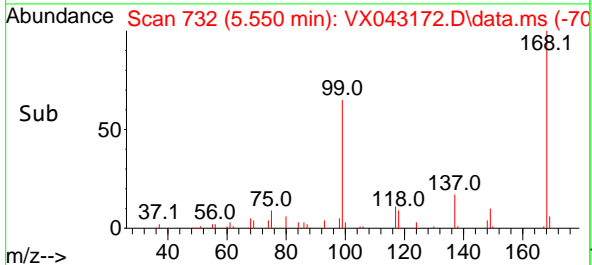
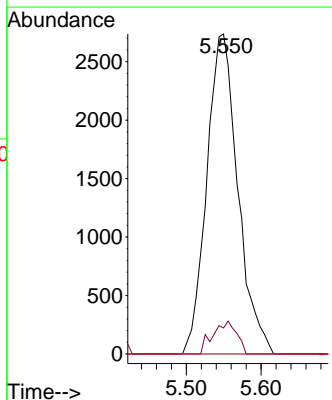
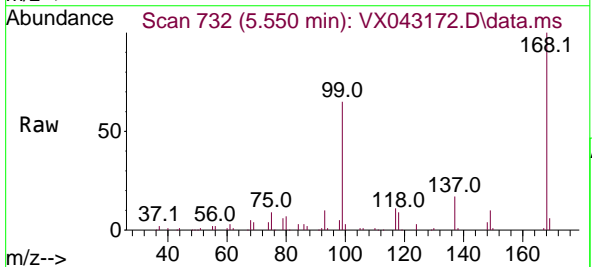


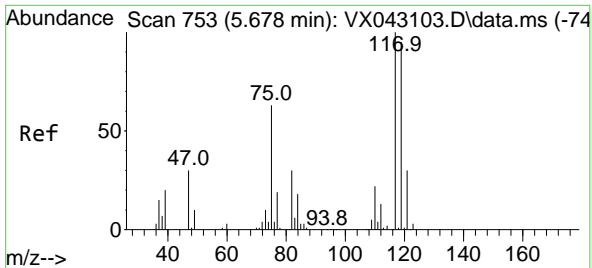
Tgt Ion:113 Resp: 59893
 Ion Ratio Lower Upper
 113 100
 111 101.7 82.6 124.0
 192 17.3 14.6 22.0



#36
 1,1-Dichloropropene
 Concen: 5.229 ug/l
 RT: 5.550 min Scan# 732
 Delta R.T. -0.141 min
 Lab File: VX043172.D
 Acq: 26 Sep 2024 12:52

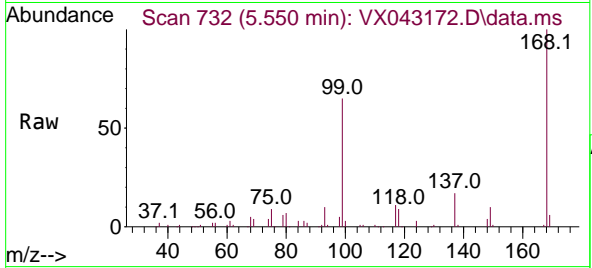
Tgt Ion: 75 Resp: 7907
 Ion Ratio Lower Upper
 75 100
 110 7.8 17.8 53.4#
 77 0.0 25.2 37.8#



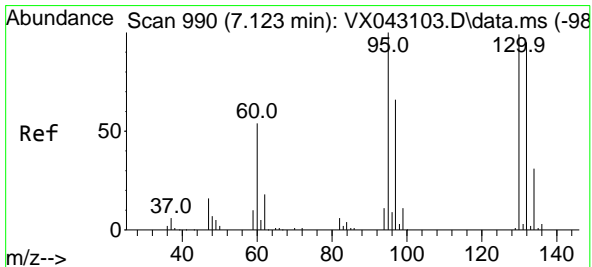
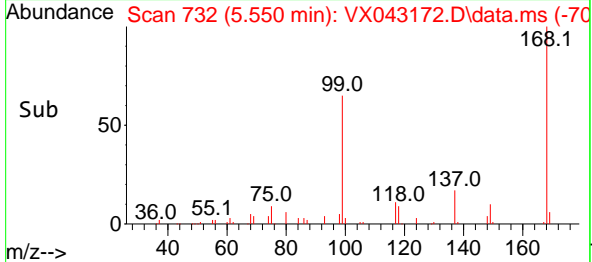
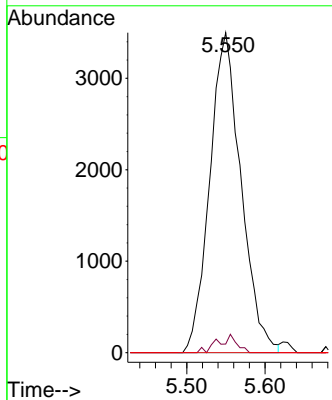


#38
 Carbon Tetrachloride
 Concen: 4.988 ug/l
 RT: 5.550 min Scan# 717
 Delta R.T. -0.128 min
 Lab File: VX043172.D
 Acq: 26 Sep 2024 12:52

Instrument : MSVOA_X
 ClientSampleId :

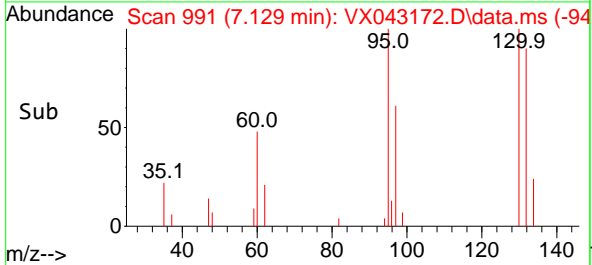
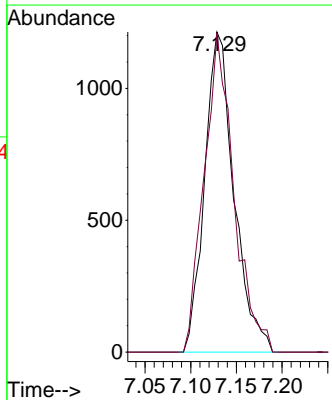
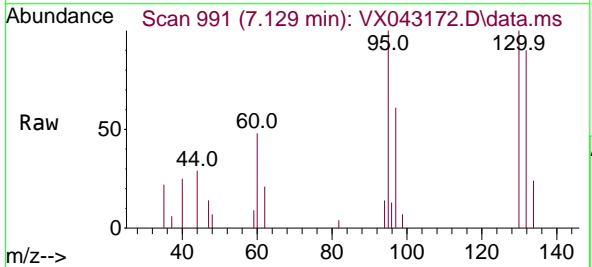


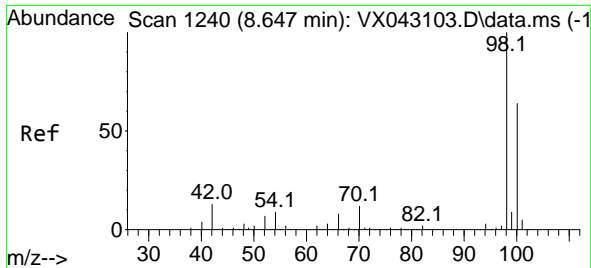
Tgt Ion:117 Resp: 9717
 Ion Ratio Lower Upper
 117 100
 119 2.7 75.5 113.3#
 121 0.0 24.2 36.2#



#44
 Trichloroethene
 Concen: 2.221 ug/l
 RT: 7.129 min Scan# 991
 Delta R.T. 0.006 min
 Lab File: VX043172.D
 Acq: 26 Sep 2024 12:52

Tgt Ion:130 Resp: 2712
 Ion Ratio Lower Upper
 130 100
 95 99.6 0.0 201.6

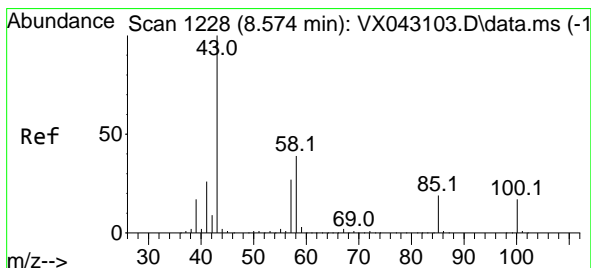
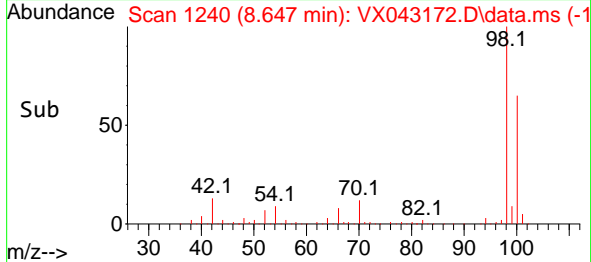
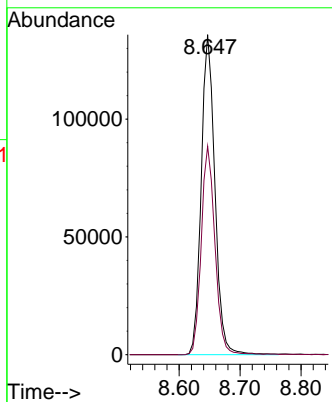
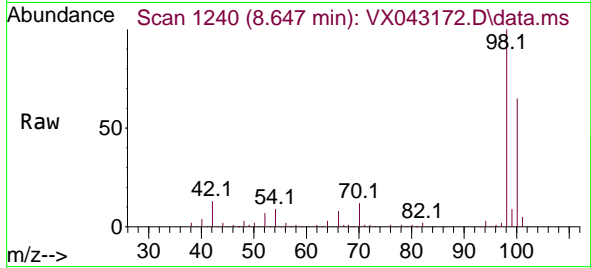




#50
 Toluene-d8
 Concen: 51.034 ug/l
 RT: 8.647 min Scan# 1240
 Delta R.T. -0.000 min
 Lab File: VX043172.D
 Acq: 26 Sep 2024 12:52

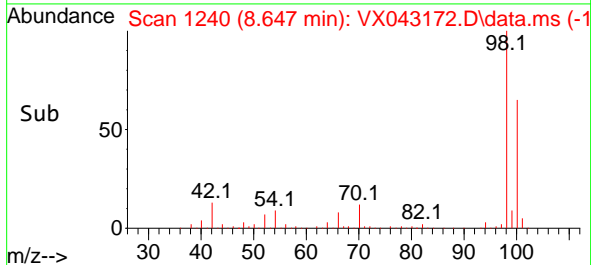
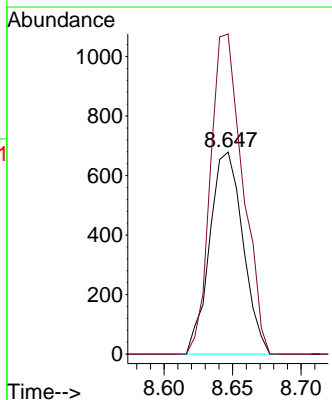
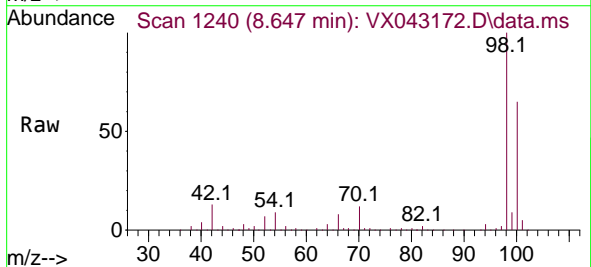
Instrument :
 MSVOA_X
 ClientSampleId :

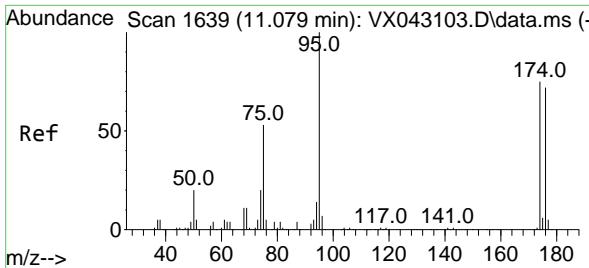
Tgt Ion: 98 Resp: 212480
 Ion Ratio Lower Upper
 98 100
 100 65.3 52.2 78.4



#51
 4-Methyl-2-Pentanone
 Concen: 0.589 ug/l
 RT: 8.647 min Scan# 1240
 Delta R.T. 0.073 min
 Lab File: VX043172.D
 Acq: 26 Sep 2024 12:52

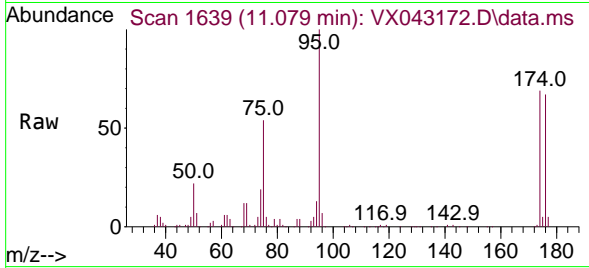
Tgt Ion: 43 Resp: 1147
 Ion Ratio Lower Upper
 43 100
 58 153.8 30.3 45.5#



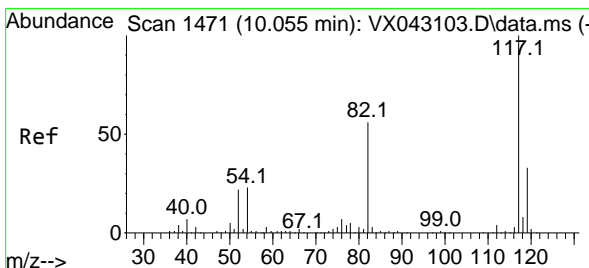
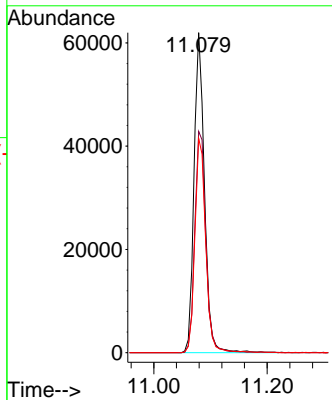
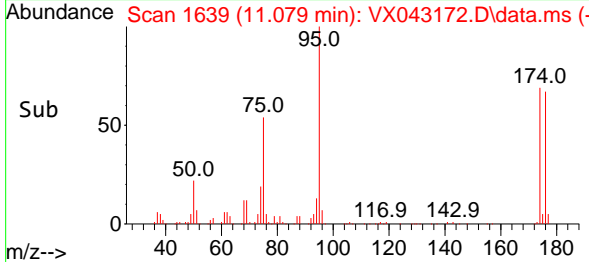


#62
 4-Bromofluorobenzene
 Concen: 47.310 ug/l
 RT: 11.079 min Scan# 1639
 Delta R.T. -0.000 min
 Lab File: VX043172.D
 Acq: 26 Sep 2024 12:52

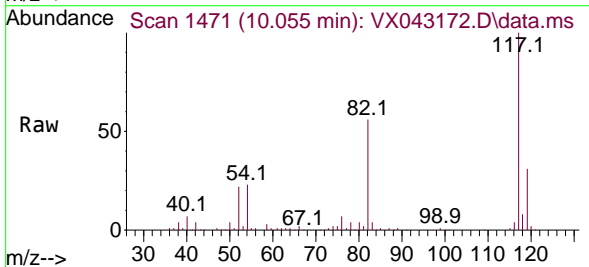
Instrument : MSVOA_X
 ClientSampleId :



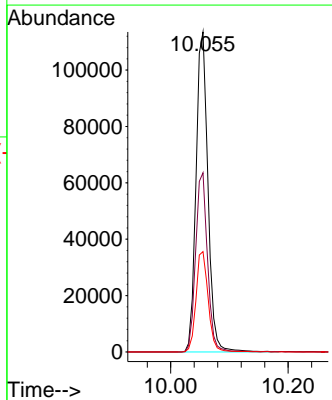
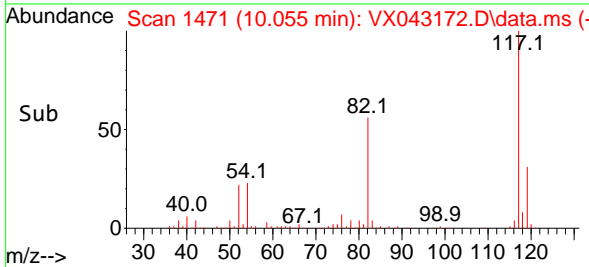
Tgt Ion: 95 Resp: 79325
 Ion Ratio Lower Upper
 95 100
 174 73.1 0.0 146.0
 176 69.0 0.0 142.6

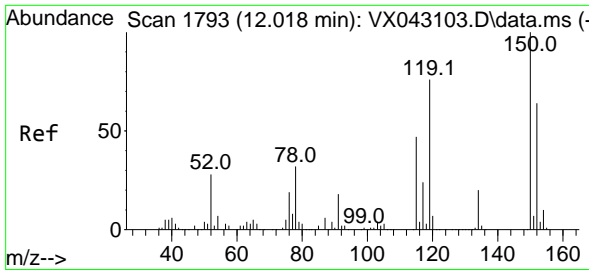


#63
 Chlorobenzene-d5
 Concen: 50.000 ug/l
 RT: 10.055 min Scan# 1471
 Delta R.T. -0.000 min
 Lab File: VX043172.D
 Acq: 26 Sep 2024 12:52



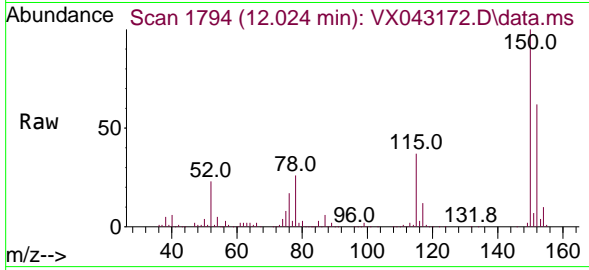
Tgt Ion: 117 Resp: 159644
 Ion Ratio Lower Upper
 117 100
 82 56.0 44.7 67.1
 119 31.4 26.3 39.5



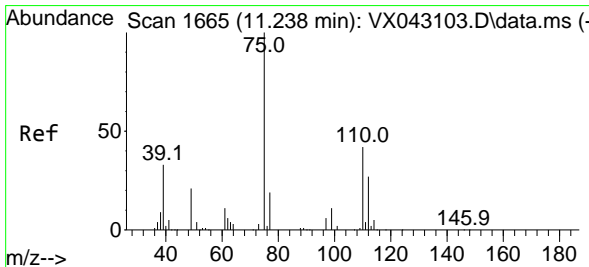
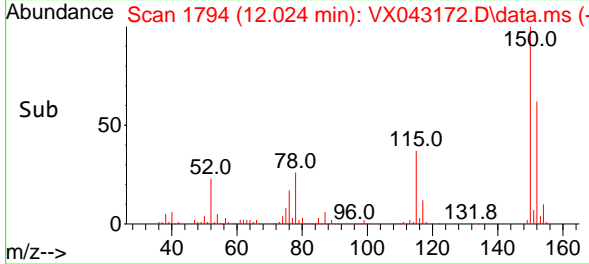
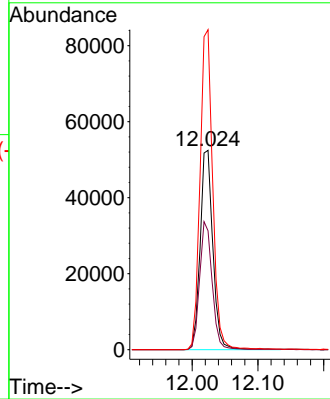


#72
 1,4-Dichlorobenzene-d4
 Concen: 50.000 ug/l
 RT: 12.024 min Scan# 1
 Delta R.T. 0.006 min
 Lab File: VX043172.D
 Acq: 26 Sep 2024 12:52

Instrument :
 MSVOA_X
 ClientSampleId :

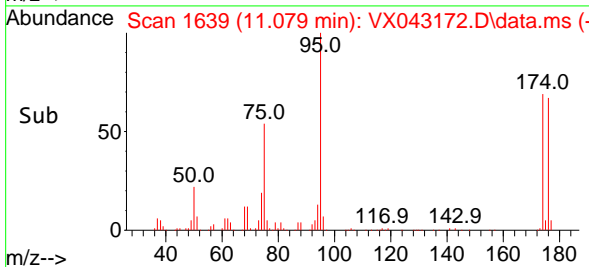
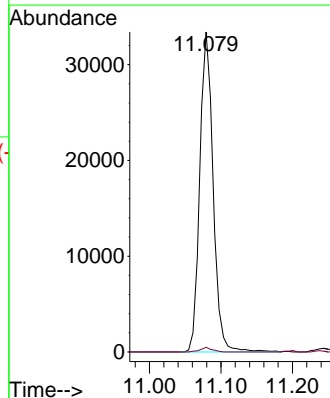
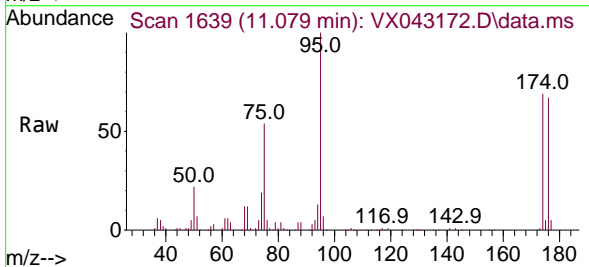


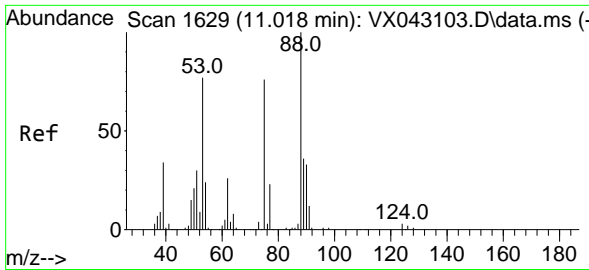
Tgt Ion:152 Resp: 70373
 Ion Ratio Lower Upper
 152 100
 115 63.2 43.7 131.1
 150 159.4 0.0 344.6



#76
 1,2,3-Trichloropropane
 Concen: 28.988 ug/l
 RT: 11.079 min Scan# 1639
 Delta R.T. -0.159 min
 Lab File: VX043172.D
 Acq: 26 Sep 2024 12:52

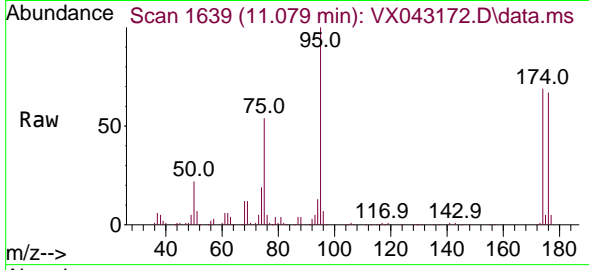
Tgt Ion: 75 Resp: 43371
 Ion Ratio Lower Upper
 75 100
 77 1.2 21.9 65.7#



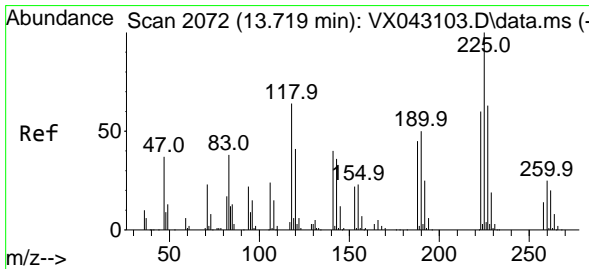
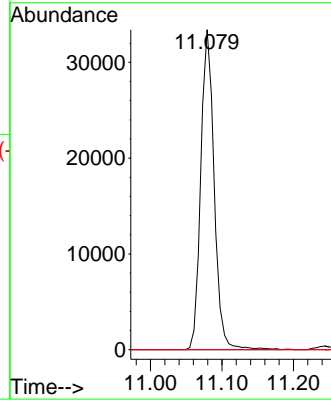
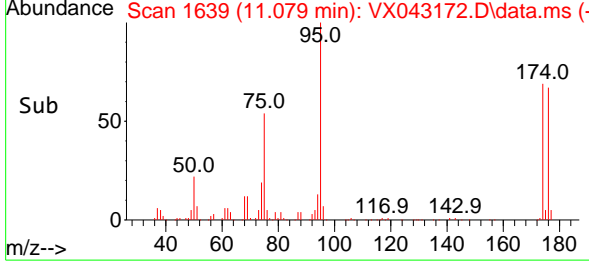


#81
 trans-1,4-Dichloro-2-butene
 Concen: 69.066 ug/l
 RT: 11.079 min Scan# 1639
 Delta R.T. 0.061 min
 Lab File: VX043172.D
 Acq: 26 Sep 2024 12:52

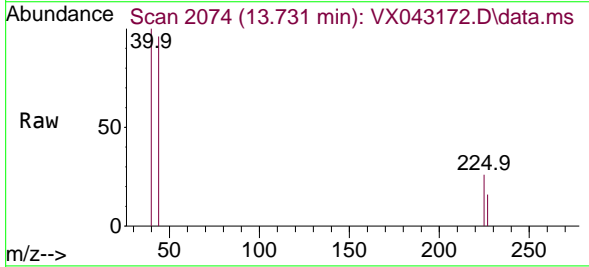
Instrument : MSVOA_X
 ClientSampleId :



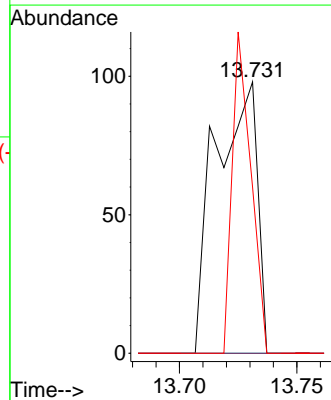
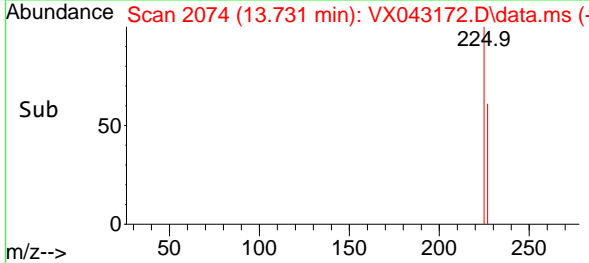
Tgt Ion: 75 Resp: 43371
 Ion Ratio Lower Upper
 75 100
 53 0.0 85.4 128.2#
 89 0.0 38.8 58.2#

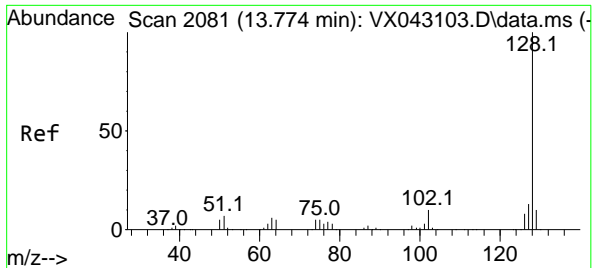


#94
 Hexachlorobutadiene
 Concen: 0.202 ug/l
 RT: 13.731 min Scan# 2074
 Delta R.T. 0.012 min
 Lab File: VX043172.D
 Acq: 26 Sep 2024 12:52



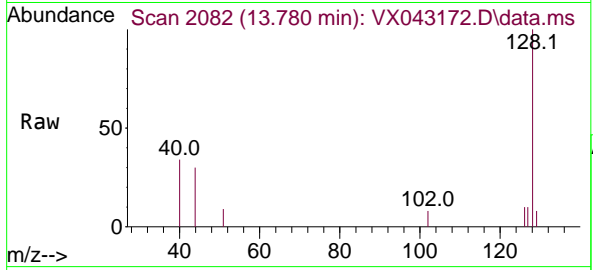
Tgt Ion: 225 Resp: 120
 Ion Ratio Lower Upper
 225 100
 223 0.0 31.8 95.4#
 227 53.3 31.9 95.7





#95
 Naphthalene
 Concen: 0.305 ug/l
 RT: 13.780 min Scan# 20
 Delta R.T. 0.006 min
 Lab File: VX043172.D
 Acq: 26 Sep 2024 12:52

Instrument : MSVOA_X
 ClientSampleId :



Tgt Ion:128 Resp: 1496

Ion	Ratio	Lower	Upper
128	100		
127	4.4	10.2	15.4#
129	6.8	8.6	13.0#

