

Data Path : Z:\voasrv\HPCHEM1\MSVOA\_X\Data\VX092624\  
 Data File : VX043177.D  
 Acq On : 26 Sep 2024 14:48  
 Operator : JC/MD  
 Sample : P4180-01  
 Misc : 5.0mL/MSVOA\_X/WATER  
 ALS Vial : 15 Sample Multiplier: 1

Instrument :  
 MSVOA\_X  
 ClientSampleId :  
 5602-75-001-NEUTRALIZATION-OUTFALL

Quant Time: Sep 27 01:42:02 2024  
 Quant Method : Z:\voasrv\HPCHEM1\MSVOA\_X\Method\82X092324W.M  
 Quant Title : SW846 8260  
 QLast Update : Tue Sep 24 03:13:52 2024  
 Response via : Initial Calibration

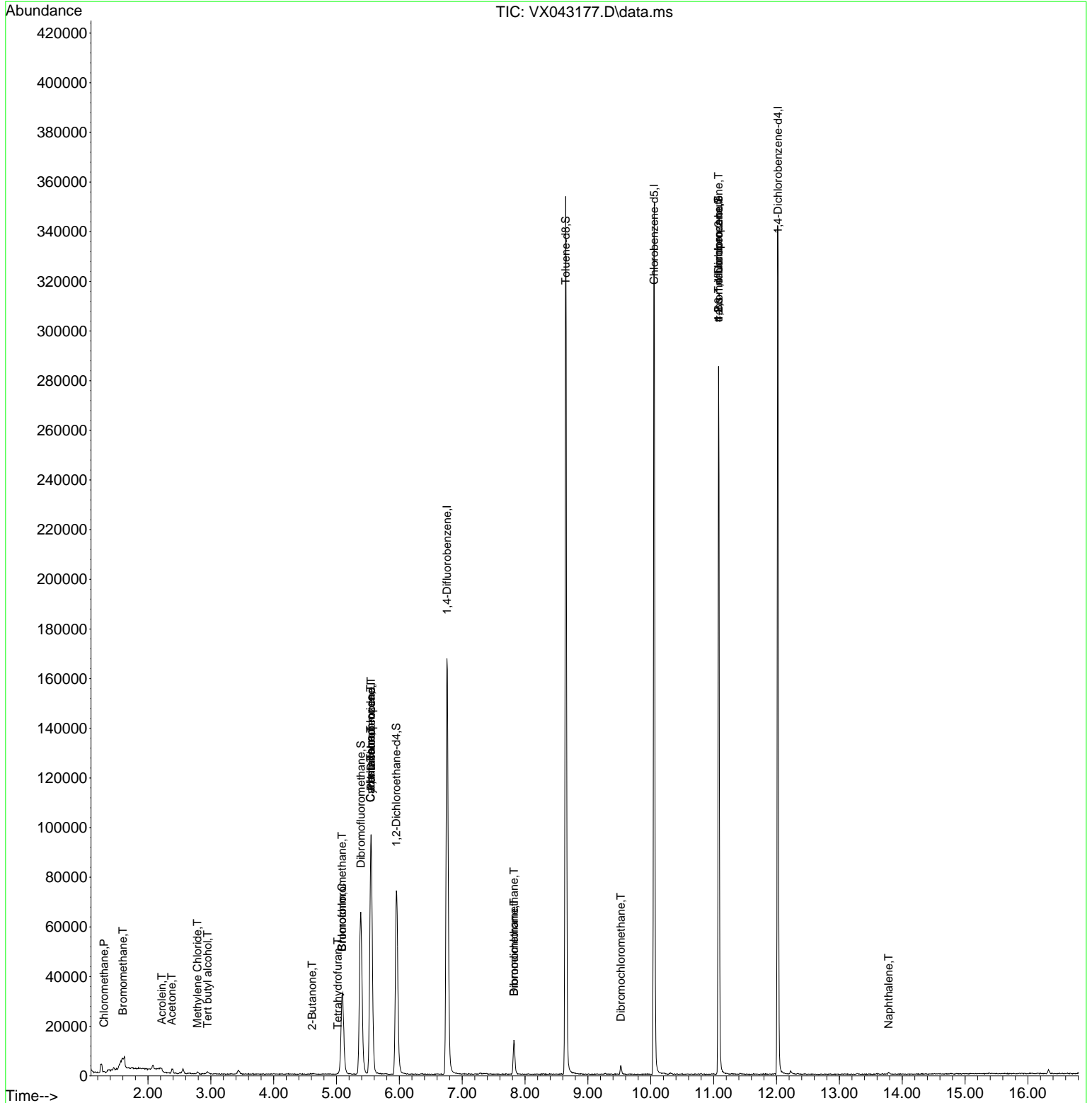
Compound	R.T.	QIon	Response	Conc	Units	Dev(Min)
-----						
Internal Standards						
1) Pentafluorobenzene	5.550	168	85373	50.000	ug/l	0.00
34) 1,4-Difluorobenzene	6.757	114	170067	50.000	ug/l	0.00
63) Chlorobenzene-d5	10.055	117	152996	50.000	ug/l	0.00
72) 1,4-Dichlorobenzene-d4	12.024	152	67676	50.000	ug/l	0.00
System Monitoring Compounds						
33) 1,2-Dichloroethane-d4	5.952	65	76712	54.095	ug/l	0.00
Spiked Amount	50.000	Range	74 - 125	Recovery	=	108.200%
35) Dibromofluoromethane	5.385	113	57732	48.122	ug/l	0.00
Spiked Amount	50.000	Range	75 - 124	Recovery	=	96.240%
50) Toluene-d8	8.647	98	207347	51.085	ug/l	0.00
Spiked Amount	50.000	Range	86 - 113	Recovery	=	102.160%
62) 4-Bromofluorobenzene	11.079	95	75968	46.476	ug/l	0.00
Spiked Amount	50.000	Range	77 - 121	Recovery	=	92.960%
Target Compounds						
						Qvalue
3) Chloromethane	1.301	50	320	0.344	ug/l #	43
5) Bromomethane	1.599	94	117	0.215	ug/l	93
11) Tert butyl alcohol	2.947	59	564	1.781	ug/l #	71
13) Acrolein	2.221	56	41	0.983	ug/l #	1
16) Acetone	2.380	43	2316	3.492	ug/l	98
20) Methylene Chloride	2.788	84	473	0.448	ug/l #	71
25) 2-Butanone	4.611	43	273	0.319	ug/l #	49
28) Bromochloromethane	5.086	49	3357	4.193	ug/l #	10
29) Tetrahydrofuran	5.019	42	104	0.202	ug/l #	31
30) Chloroform	5.086	83	38990	19.442	ug/l	98
31) Cyclohexane	5.544	56	2204	1.580	ug/l #	35
36) 1,1-Dichloropropene	5.550	75	7445	5.050	ug/l #	49
38) Carbon Tetrachloride	5.544	117	9541	5.024	ug/l #	19
46) Dibromomethane	7.824	93	292	0.320	ug/l #	5
47) Bromodichloromethane	7.824	83	9383	4.946	ug/l	94
60) Dibromochloromethane	9.525	129	1821	1.209	ug/l	99
76) 1,2,3-Trichloropropane	11.079	75	41223	28.650	ug/l #	33
81) trans-1,4-Dichloro-2-b...	11.079	75	41223	68.262	ug/l #	7
95) Naphthalene	13.786	128	1086	0.230	ug/l #	82
-----						

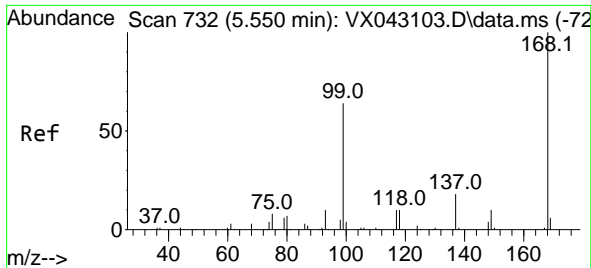
(#) = qualifier out of range (m) = manual integration (+) = signals summed

Data Path : Z:\voasrv\HPCHEM1\MSVOA\_X\Data\VX092624\  
 Data File : VX043177.D  
 Acq On : 26 Sep 2024 14:48  
 Operator : JC/MD  
 Sample : P4180-01  
 Misc : 5.0mL/MSVOA\_X/WATER  
 ALS Vial : 15 Sample Multiplier: 1

**Instrument :**  
 MSVOA\_X  
**ClientSampleId :**  
 5602-75-001-NEUTRALIZATION-OUTFALL

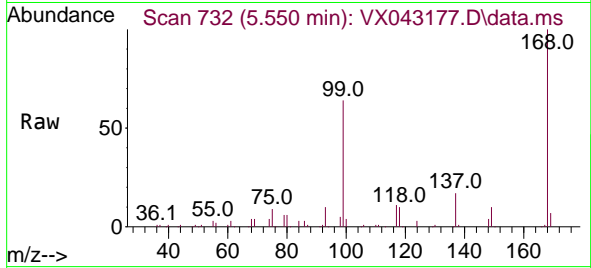
Quant Time: Sep 27 01:42:02 2024  
 Quant Method : Z:\voasrv\HPCHEM1\MSVOA\_X\Method\82X092324W.M  
 Quant Title : SW846 8260  
 QLast Update : Tue Sep 24 03:13:52 2024  
 Response via : Initial Calibration



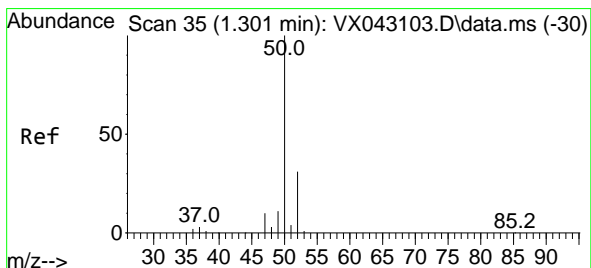
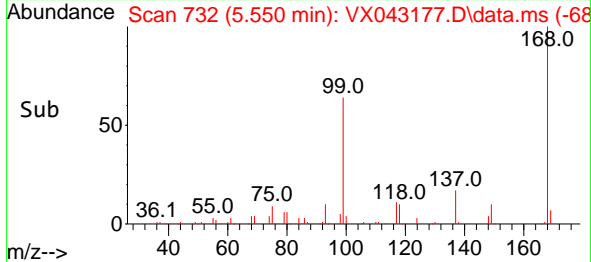
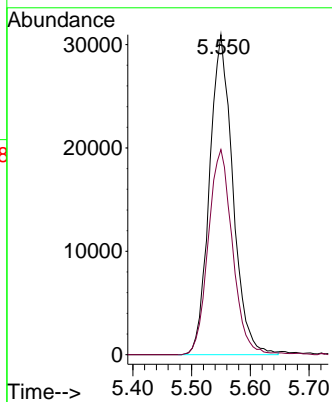


#1  
 Pentafluorobenzene  
 Concen: 50.000 ug/l  
 RT: 5.550 min Scan# 71  
 Delta R.T. -0.000 min  
 Lab File: VX043177.D  
 Acq: 26 Sep 2024 14:48

Instrument : MSVOA\_X  
 ClientSampleId : 5602-75-001-NEUTRALIZATION-OUTFALL

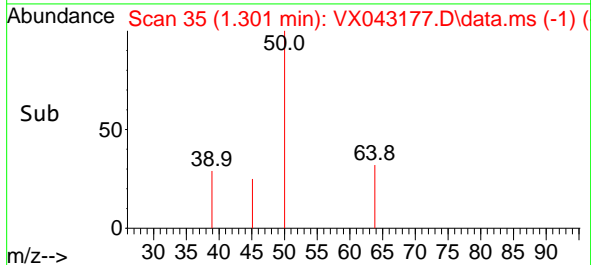
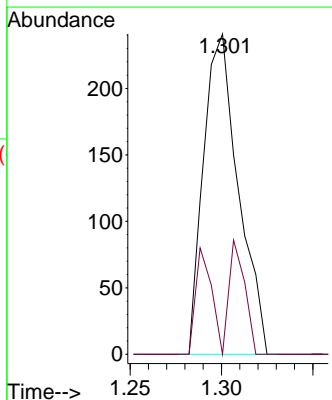
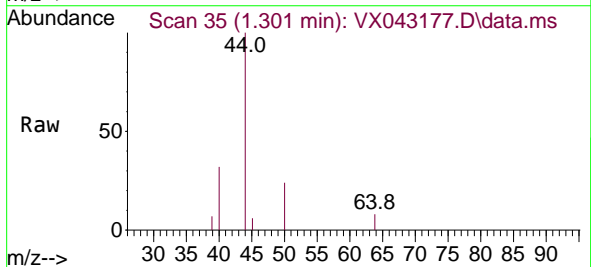


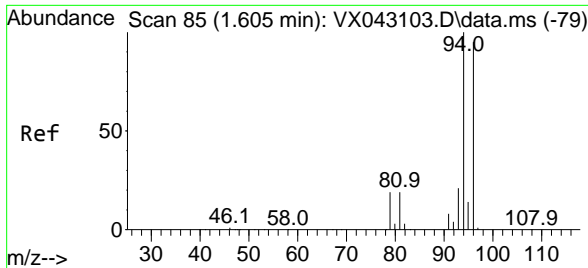
Tgt Ion:168 Resp: 85373  
 Ion Ratio Lower Upper  
 168 100  
 99 64.1 50.8 76.2



#3  
 Chloromethane  
 Concen: 0.344 ug/l  
 RT: 1.301 min Scan# 35  
 Delta R.T. -0.000 min  
 Lab File: VX043177.D  
 Acq: 26 Sep 2024 14:48

Tgt Ion: 50 Resp: 320  
 Ion Ratio Lower Upper  
 50 100  
 52 0.0 25.1 37.7#

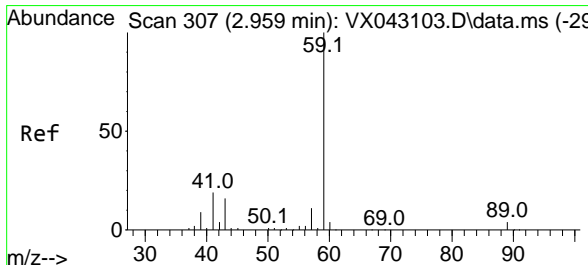
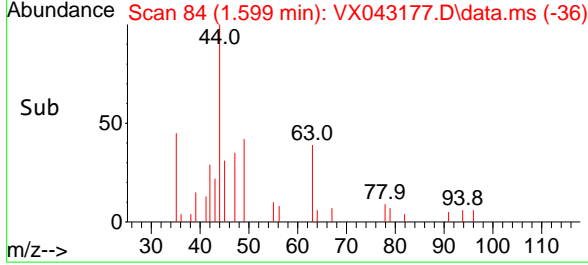
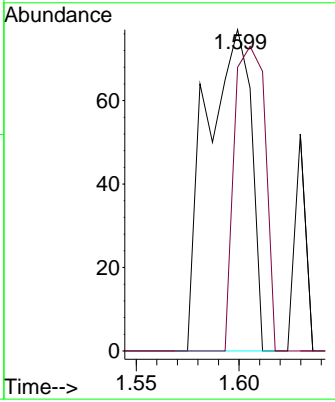
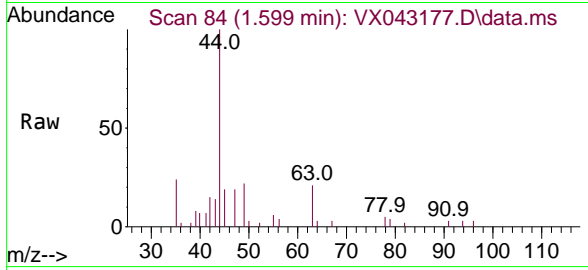




#5  
 Bromomethane  
 Concen: 0.215 ug/l  
 RT: 1.599 min Scan# 84  
 Delta R.T. -0.006 min  
 Lab File: VX043177.D  
 Acq: 26 Sep 2024 14:48

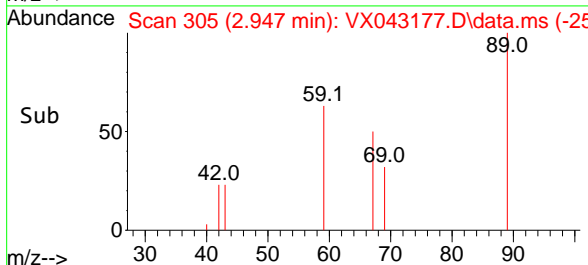
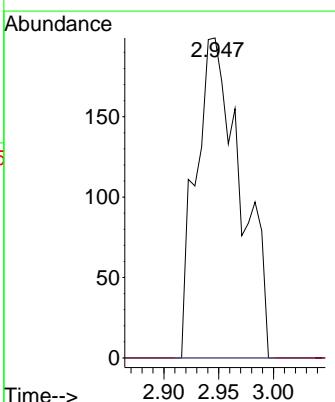
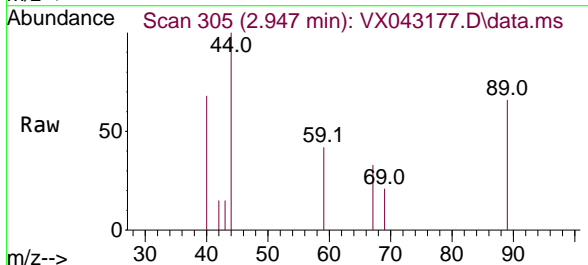
Instrument : MSVOA\_X  
 ClientSampleId : 5602-75-001-NEUTRALIZATION-OUTFALL

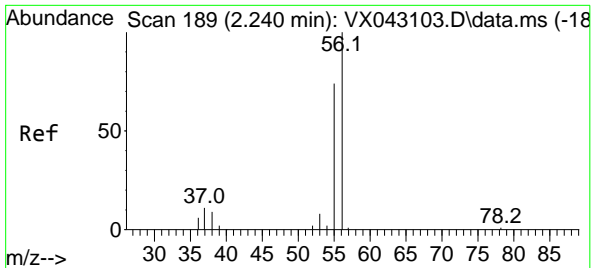
Tgt Ion: 94 Resp: 117  
 Ion Ratio Lower Upper  
 94 100  
 96 88.3 76.2 114.4



#11  
 Tert butyl alcohol  
 Concen: 1.781 ug/l  
 RT: 2.947 min Scan# 305  
 Delta R.T. -0.012 min  
 Lab File: VX043177.D  
 Acq: 26 Sep 2024 14:48

Tgt Ion: 59 Resp: 564  
 Ion Ratio Lower Upper  
 59 100  
 57 0.0 8.6 13.0#

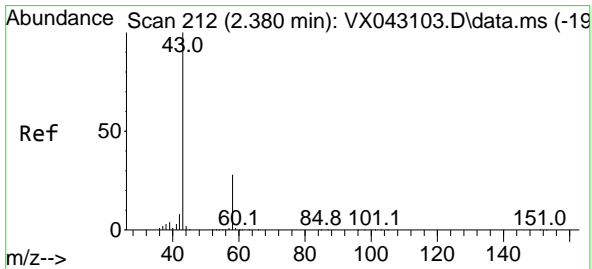
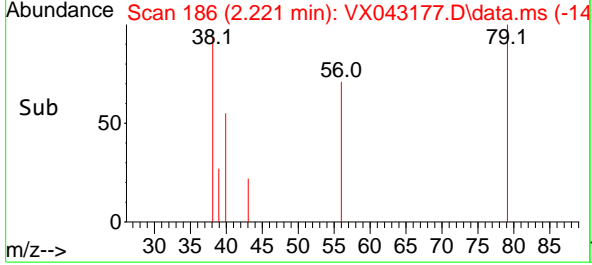
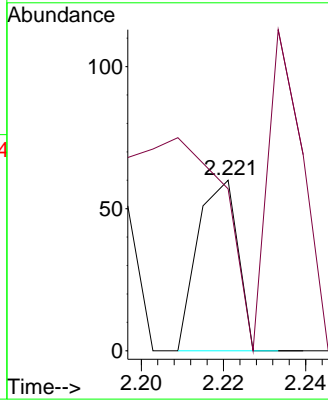
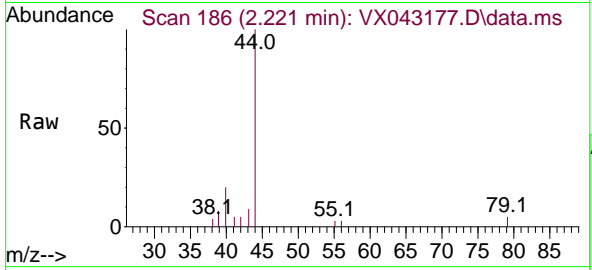




#13  
 Acrolein  
 Concen: 0.983 ug/l  
 RT: 2.221 min Scan# 11  
 Delta R.T. -0.018 min  
 Lab File: VX043177.D  
 Acq: 26 Sep 2024 14:48

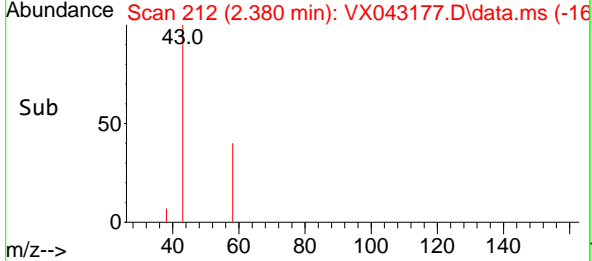
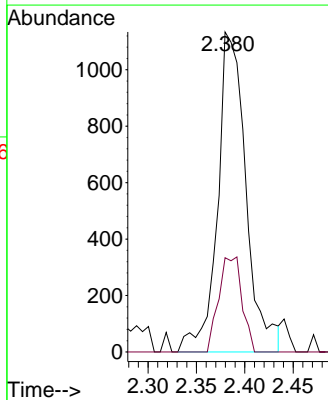
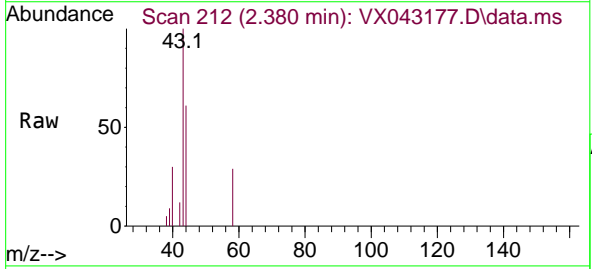
Instrument : MSVOA\_X  
 ClientSampleId : 5602-75-001-NEUTRALIZATION-OUTFALL

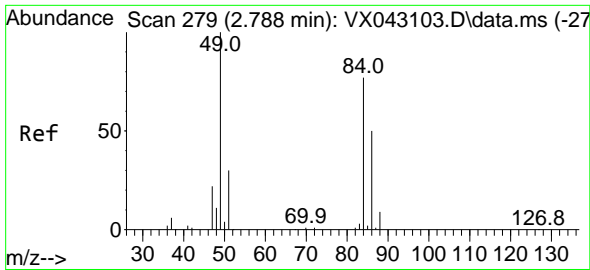
Tgt Ion: 56 Resp: 41  
 Ion Ratio Lower Upper  
 56 100  
 55 163.4 55.8 83.6#



#16  
 Acetone  
 Concen: 3.492 ug/l  
 RT: 2.380 min Scan# 212  
 Delta R.T. -0.000 min  
 Lab File: VX043177.D  
 Acq: 26 Sep 2024 14:48

Tgt Ion: 43 Resp: 2316  
 Ion Ratio Lower Upper  
 43 100  
 58 29.5 22.6 34.0



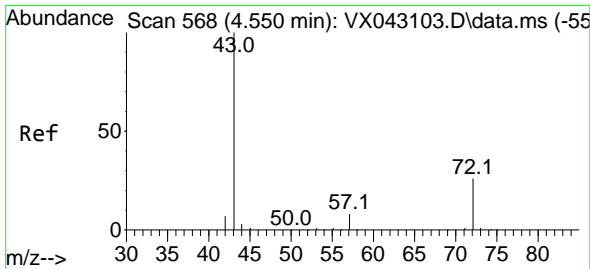
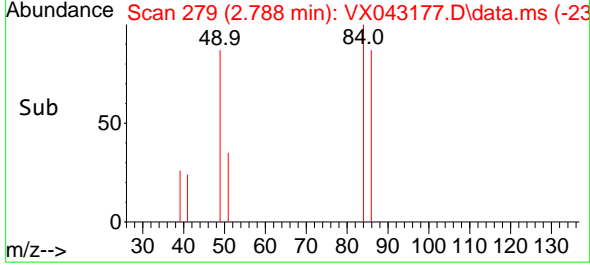
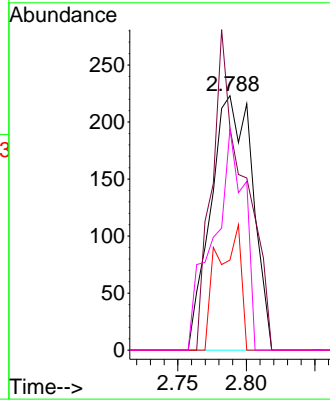
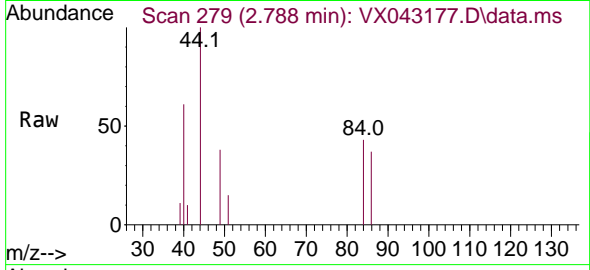


#20  
 Methylene Chloride  
 Concen: 0.448 ug/l  
 RT: 2.788 min Scan# 21  
 Delta R.T. -0.000 min  
 Lab File: VX043177.D  
 Acq: 26 Sep 2024 14:48

Instrument : MSVOA\_X  
 ClientSampleId : 5602-75-001-NEUTRALIZATION-OUTFALL

Tgt Ion: 84 Resp: 473

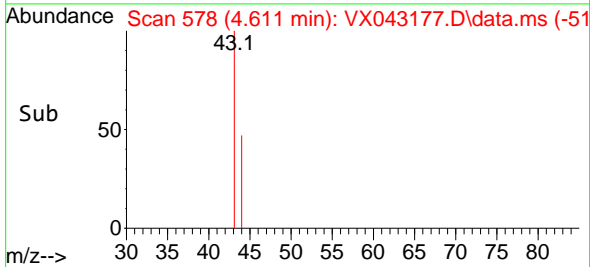
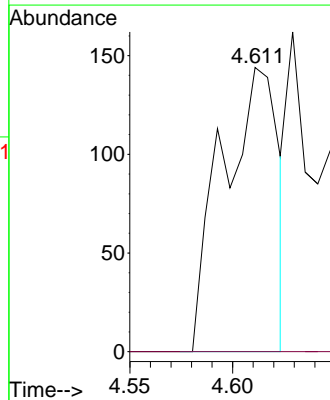
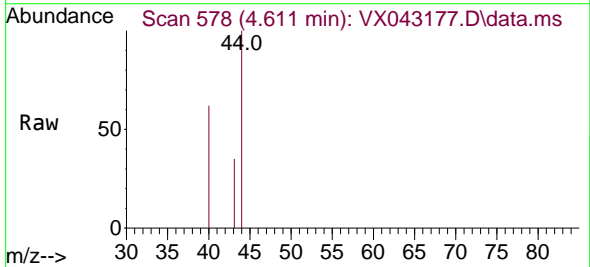
Ion	Ratio	Lower	Upper
84	100		
49	87.4	104.1	156.1#
51	35.4	31.1	46.7
86	87.0	52.1	78.1#

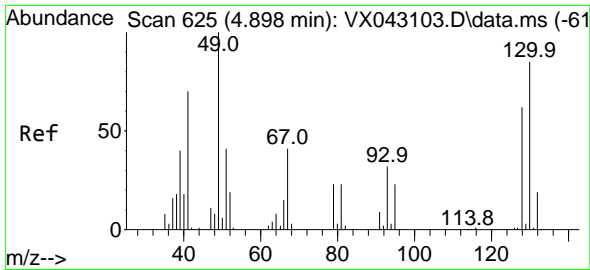


#25  
 2-Butanone  
 Concen: 0.319 ug/l  
 RT: 4.611 min Scan# 578  
 Delta R.T. 0.061 min  
 Lab File: VX043177.D  
 Acq: 26 Sep 2024 14:48

Tgt Ion: 43 Resp: 273

Ion	Ratio	Lower	Upper
43	100		
72	0.0	20.7	31.1#

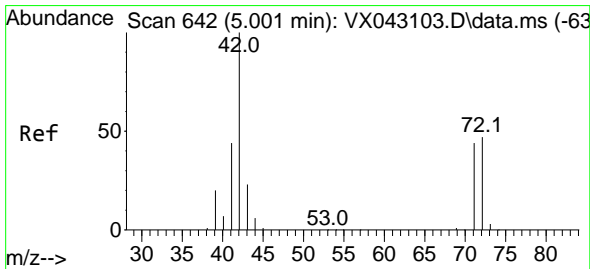
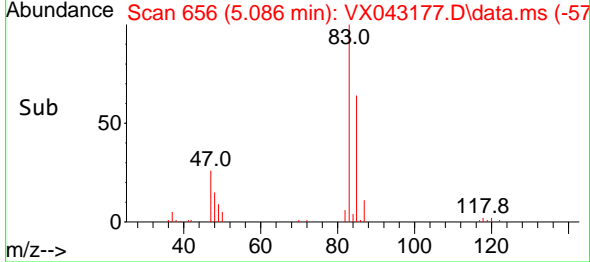
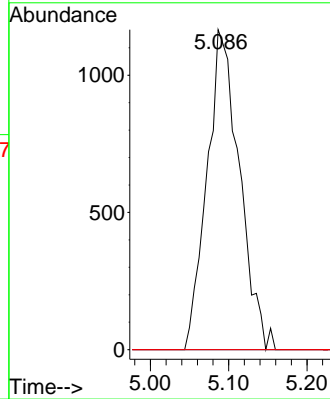
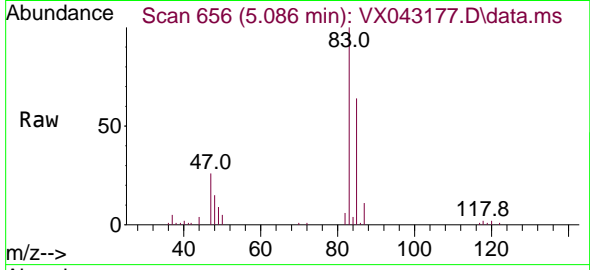




#28  
 Bromochloromethane  
 Concen: 4.193 ug/l  
 RT: 5.086 min Scan# 61  
 Delta R.T. 0.189 min  
 Lab File: VX043177.D  
 Acq: 26 Sep 2024 14:48

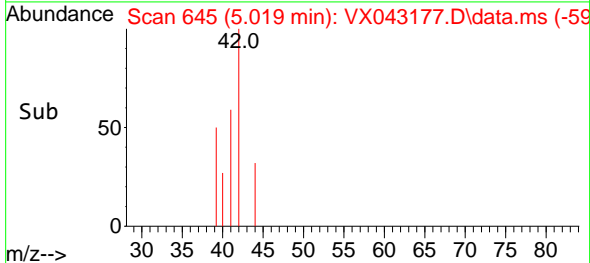
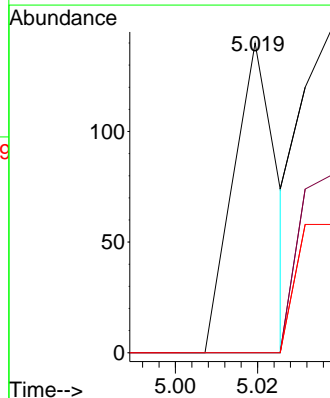
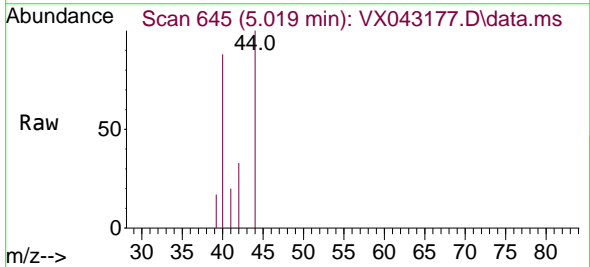
Instrument : MSVOA\_X  
 ClientSampleId : 5602-75-001-NEUTRALIZATION-OUTFALL

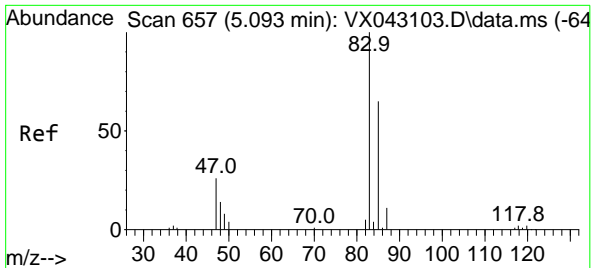
Tgt Ion: 49 Resp: 3357  
 Ion Ratio Lower Upper  
 49 100  
 129 0.0 0.0 4.2  
 130 0.0 66.6 100.0#



#29  
 Tetrahydrofuran  
 Concen: 0.202 ug/l  
 RT: 5.019 min Scan# 645  
 Delta R.T. 0.018 min  
 Lab File: VX043177.D  
 Acq: 26 Sep 2024 14:48

Tgt Ion: 42 Resp: 104  
 Ion Ratio Lower Upper  
 42 100  
 72 0.0 37.6 56.4#  
 71 0.0 34.8 52.2#

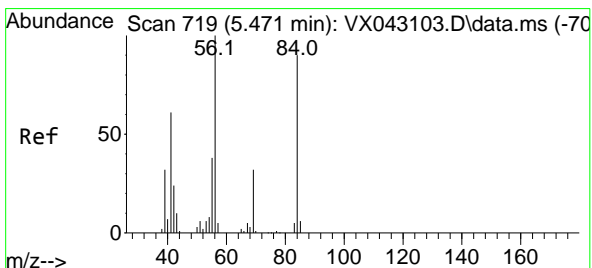
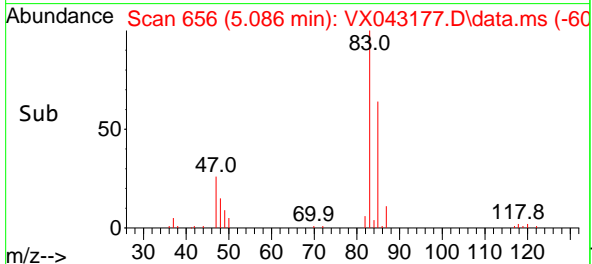
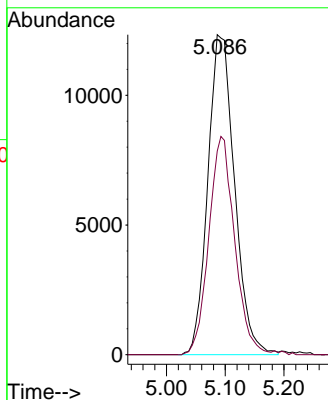
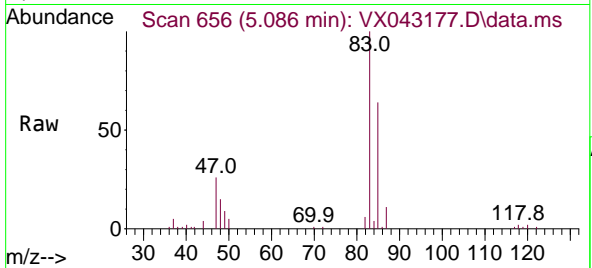




#30  
 Chloroform  
 Concen: 19.442 ug/l  
 RT: 5.086 min Scan# 61  
 Delta R.T. -0.006 min  
 Lab File: VX043177.D  
 Acq: 26 Sep 2024 14:48

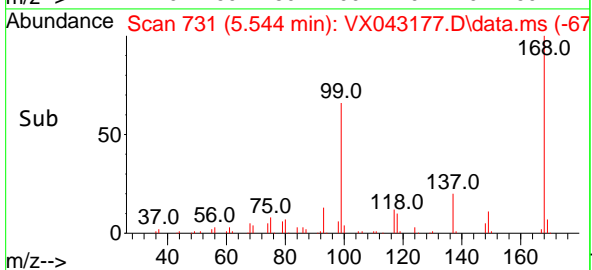
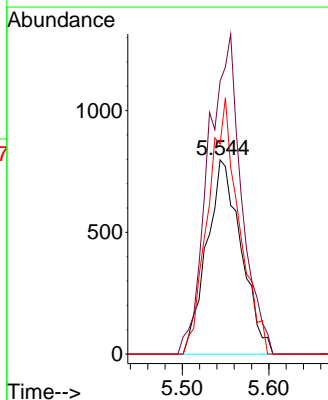
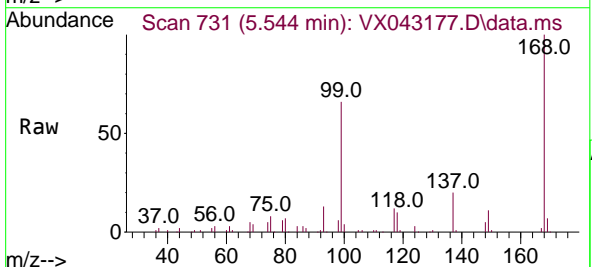
Instrument : MSVOA\_X  
 ClientSampleId : 5602-75-001-NEUTRALIZATION-OUTFALL

Tgt Ion: 83 Resp: 38990  
 Ion Ratio Lower Upper  
 83 100  
 85 63.6 52.4 78.6

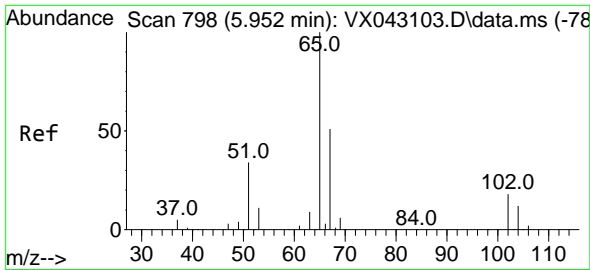


#31  
 Cyclohexane  
 Concen: 1.580 ug/l  
 RT: 5.544 min Scan# 731  
 Delta R.T. 0.073 min  
 Lab File: VX043177.D  
 Acq: 26 Sep 2024 14:48

Tgt Ion: 56 Resp: 2204  
 Ion Ratio Lower Upper  
 56 100  
 69 140.6 25.8 38.6#  
 84 108.1 72.4 108.6



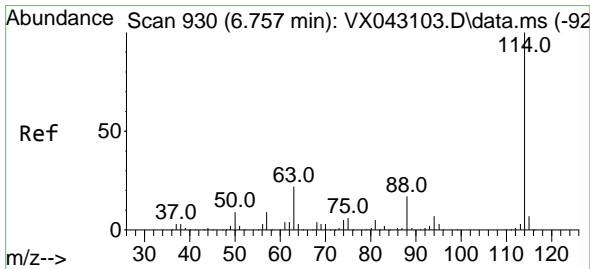
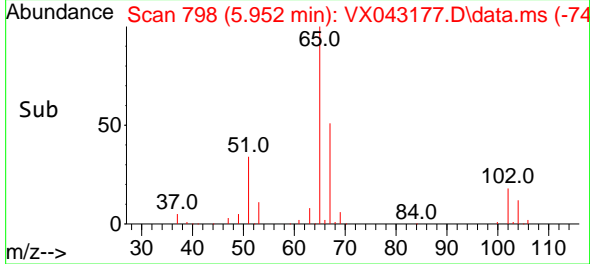
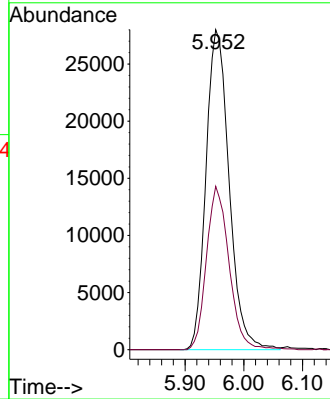
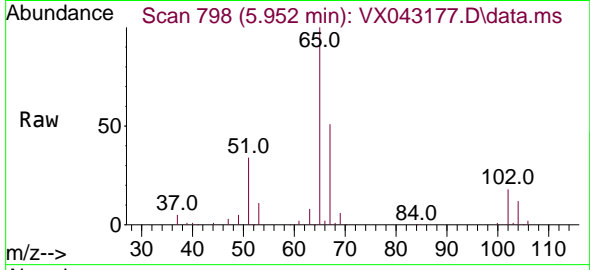




#33  
 1,2-Dichloroethane-d4  
 Concen: 54.095 ug/l  
 RT: 5.952 min Scan# 798  
 Delta R.T. -0.000 min  
 Lab File: VX043177.D  
 Acq: 26 Sep 2024 14:48

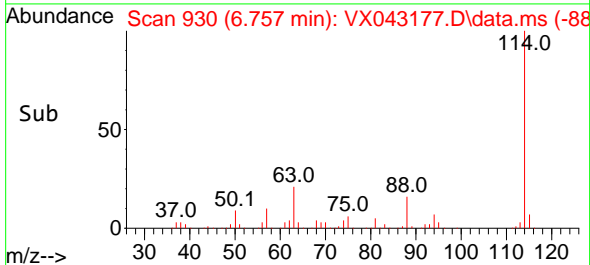
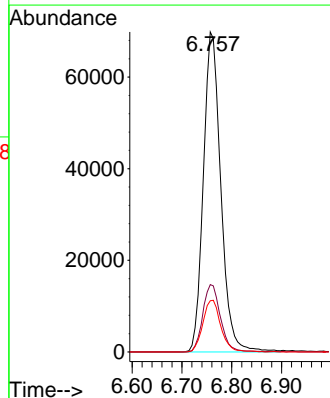
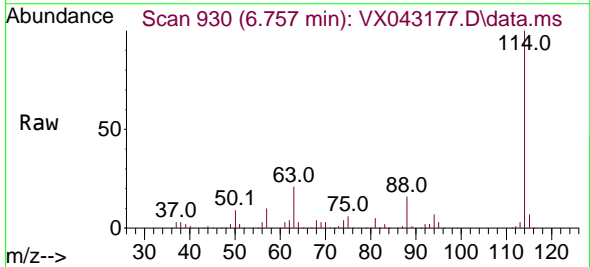
Instrument : MSVOA\_X  
 ClientSampleId : 5602-75-001-NEUTRALIZATION-OUTFALL

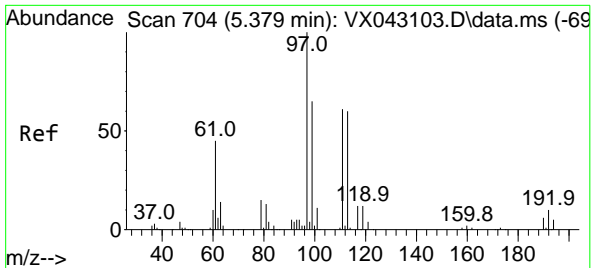
Tgt Ion: 65 Resp: 76712  
 Ion Ratio Lower Upper  
 65 100  
 67 49.9 0.0 99.0



#34  
 1,4-Difluorobenzene  
 Concen: 50.000 ug/l  
 RT: 6.757 min Scan# 930  
 Delta R.T. -0.000 min  
 Lab File: VX043177.D  
 Acq: 26 Sep 2024 14:48

Tgt Ion: 114 Resp: 170067  
 Ion Ratio Lower Upper  
 114 100  
 63 21.0 0.0 43.2  
 88 16.0 0.0 33.4



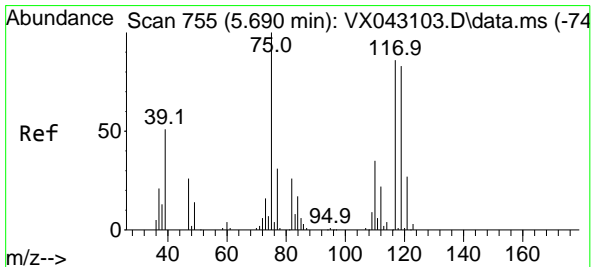
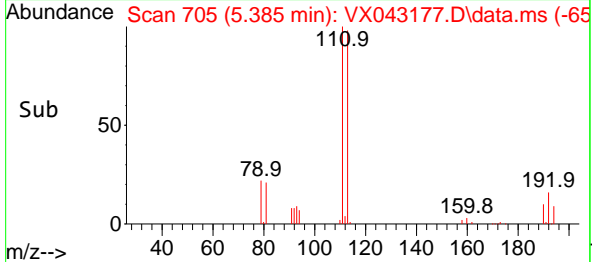
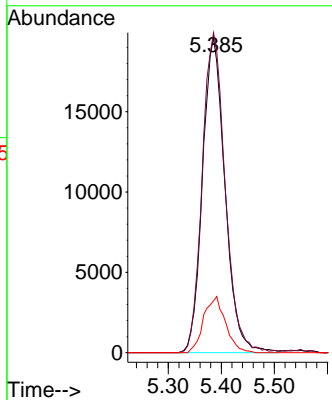
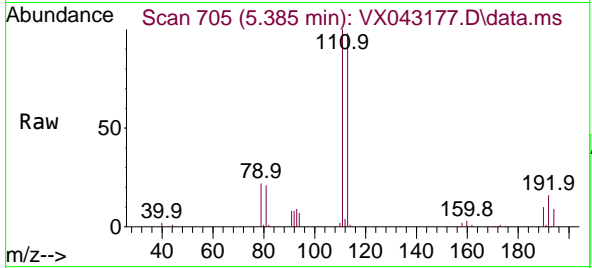


#35  
 Dibromofluoromethane  
 Concen: 48.122 ug/l  
 RT: 5.385 min Scan# 704  
 Delta R.T. 0.006 min  
 Lab File: VX043177.D  
 Acq: 26 Sep 2024 14:48

Instrument : MSVOA\_X  
 ClientSampleId : 5602-75-001-NEUTRALIZATION-OUTFALL

Tgt Ion:113 Resp: 57732

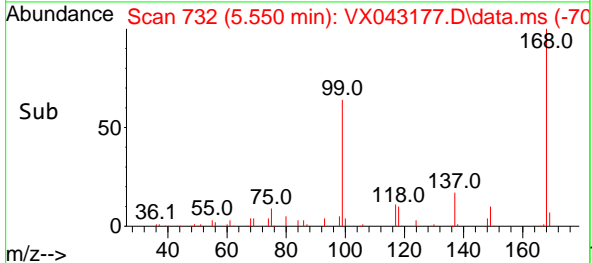
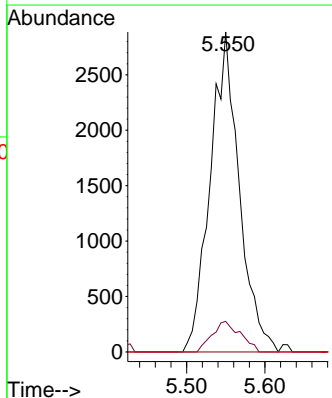
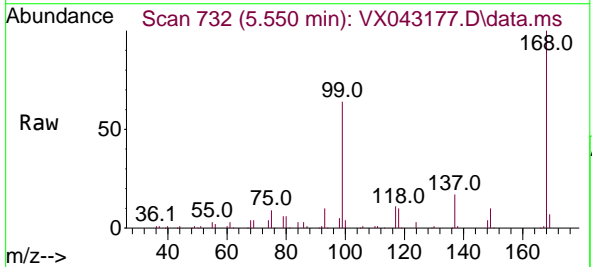
Ion	Ratio	Lower	Upper
113	100		
111	103.4	82.6	124.0
192	17.3	14.6	22.0

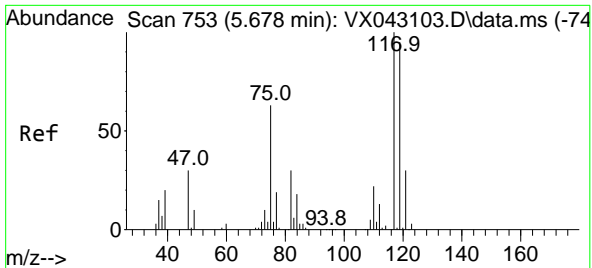


#36  
 1,1-Dichloropropene  
 Concen: 5.050 ug/l  
 RT: 5.550 min Scan# 732  
 Delta R.T. -0.140 min  
 Lab File: VX043177.D  
 Acq: 26 Sep 2024 14:48

Tgt Ion: 75 Resp: 7445

Ion	Ratio	Lower	Upper
75	100		
110	9.3	17.8	53.4#
77	0.0	25.2	37.8#

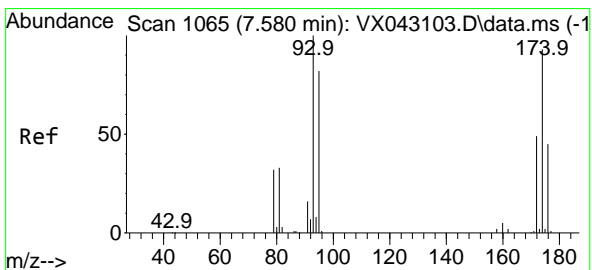
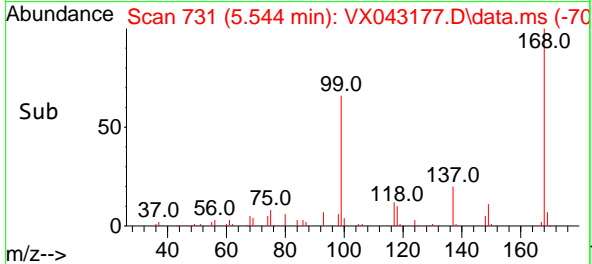
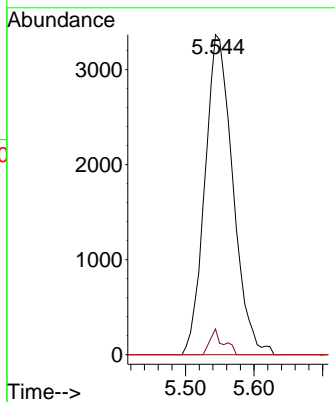
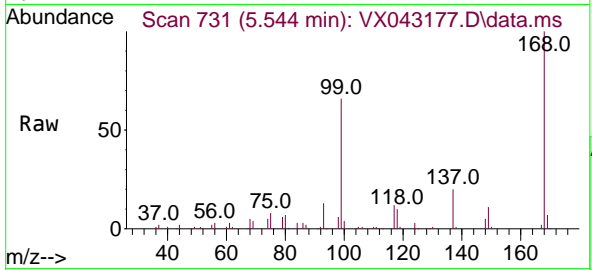




#38  
 Carbon Tetrachloride  
 Concen: 5.024 ug/l  
 RT: 5.544 min Scan# 71  
 Delta R.T. -0.134 min  
 Lab File: VX043177.D  
 Acq: 26 Sep 2024 14:48

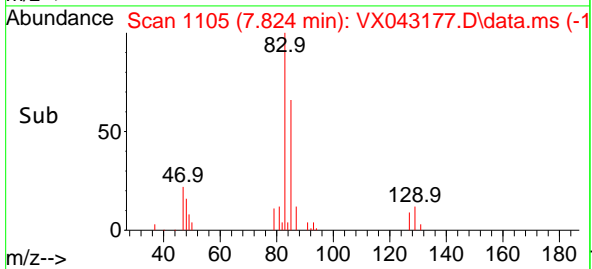
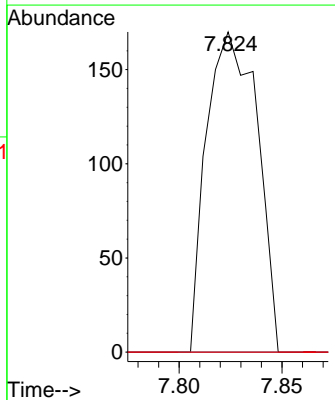
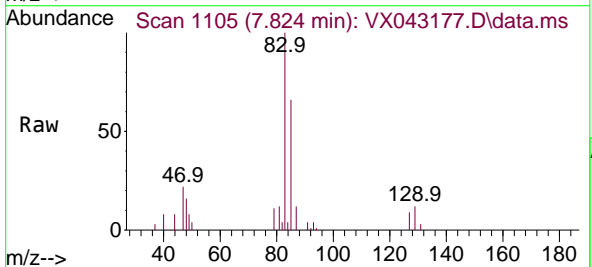
Instrument : MSVOA\_X  
 ClientSampleId : 5602-75-001-NEUTRALIZATION-OUTFALL

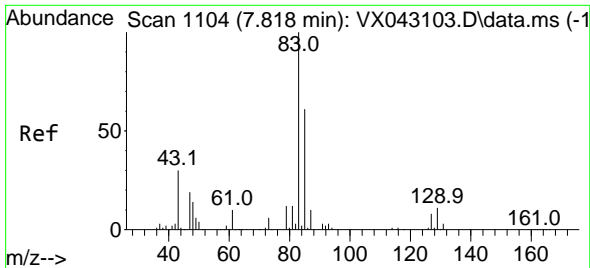
Tgt Ion	Resp	Lower	Upper
117	9541		
119	8.0	75.5	113.3#
121	0.0	24.2	36.2#



#46  
 Dibromomethane  
 Concen: 0.320 ug/l  
 RT: 7.824 min Scan# 1105  
 Delta R.T. 0.244 min  
 Lab File: VX043177.D  
 Acq: 26 Sep 2024 14:48

Tgt Ion	Resp	Lower	Upper
93	292		
95	0.0	67.1	100.7#
174	0.0	75.4	113.2#

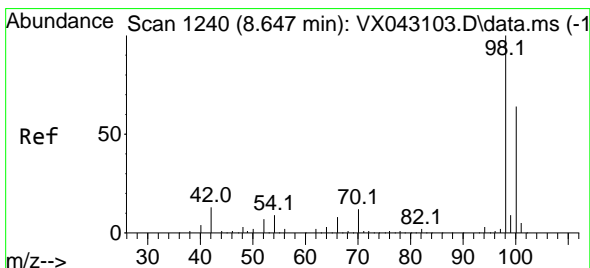
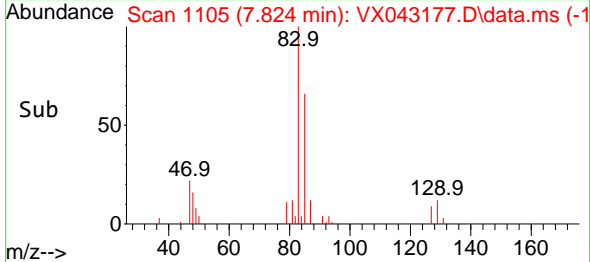
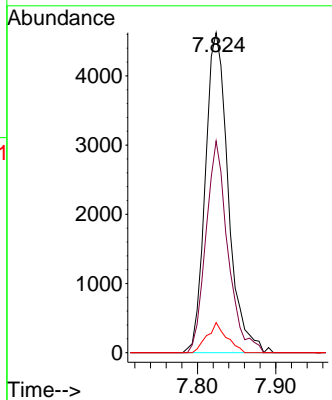
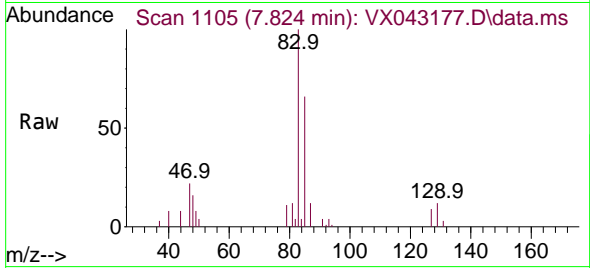




#47  
 Bromodichloromethane  
 Concen: 4.946 ug/l  
 RT: 7.824 min Scan# 1105  
 Delta R.T. 0.006 min  
 Lab File: VX043177.D  
 Acq: 26 Sep 2024 14:48

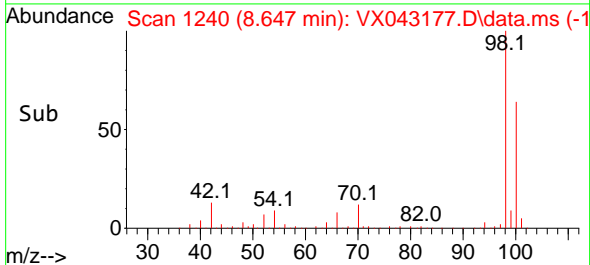
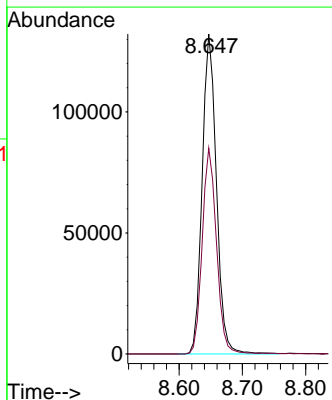
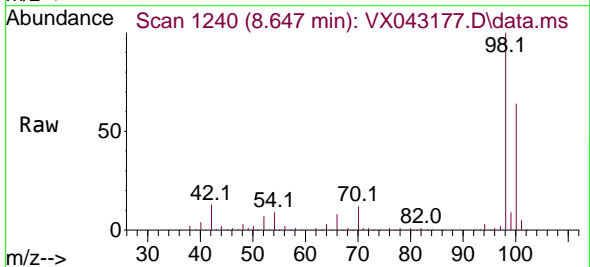
Instrument : MSVOA\_X  
 ClientSampleId : 5602-75-001-NEUTRALIZATION-OUTFALL

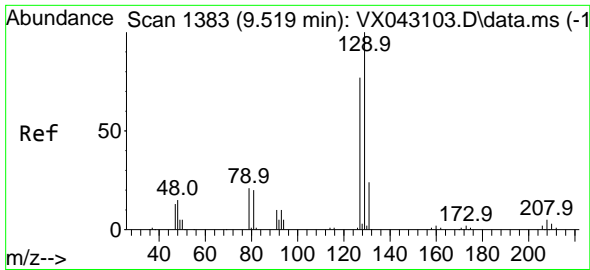
Tgt Ion	Resp	Lower	Upper
83	9383	100	
85	66.2	49.1	73.7
127	9.4	6.6	9.8



#50  
 Toluene-d8  
 Concen: 51.085 ug/l  
 RT: 8.647 min Scan# 1240  
 Delta R.T. -0.000 min  
 Lab File: VX043177.D  
 Acq: 26 Sep 2024 14:48

Tgt Ion	Resp	Lower	Upper
98	207347	100	
100	64.8	52.2	78.4

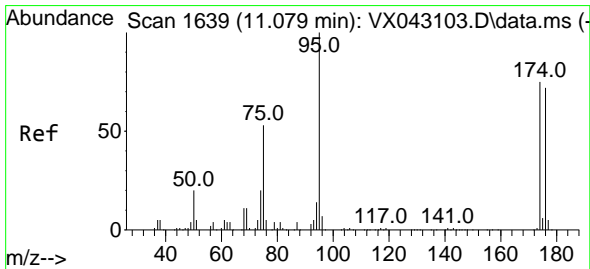
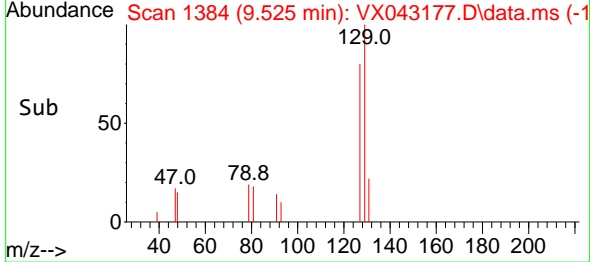
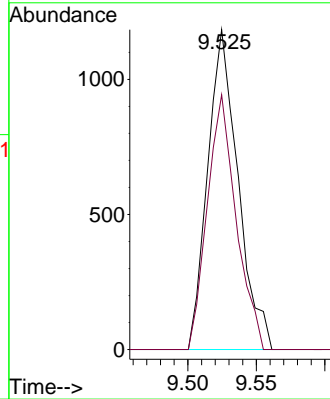
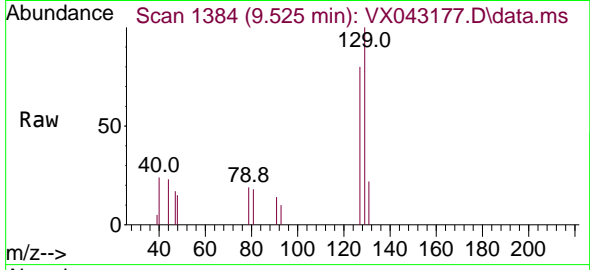




#60  
 Dibromochloromethane  
 Concen: 1.209 ug/l  
 RT: 9.525 min Scan# 11  
 Delta R.T. 0.006 min  
 Lab File: VX043177.D  
 Acq: 26 Sep 2024 14:48

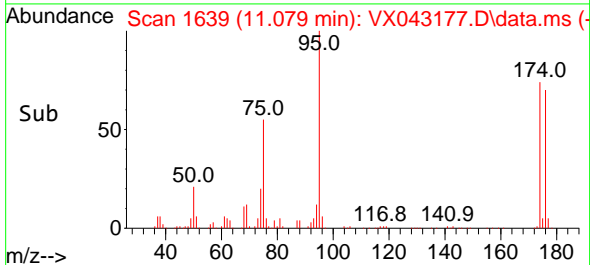
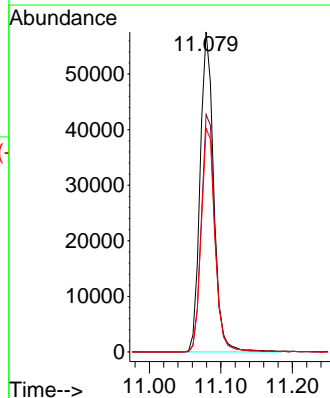
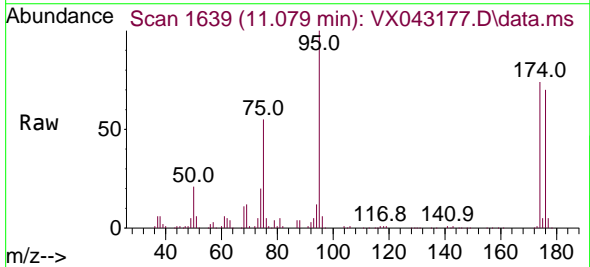
Instrument : MSVOA\_X  
 ClientSampleId : 5602-75-001-NEUTRALIZATION-OUTFALL

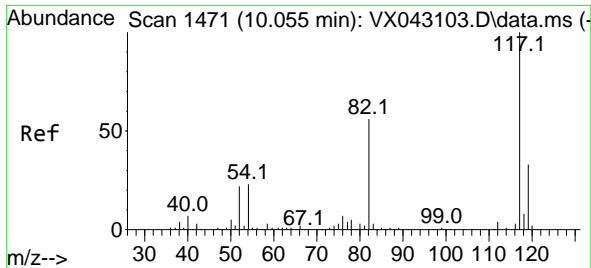
Tgt Ion:129 Resp: 1821  
 Ion Ratio Lower Upper  
 129 100  
 127 75.8 38.4 115.1



#62  
 4-Bromofluorobenzene  
 Concen: 46.476 ug/l  
 RT: 11.079 min Scan# 1639  
 Delta R.T. -0.000 min  
 Lab File: VX043177.D  
 Acq: 26 Sep 2024 14:48

Tgt Ion: 95 Resp: 75968  
 Ion Ratio Lower Upper  
 95 100  
 174 74.8 0.0 146.0  
 176 71.0 0.0 142.6

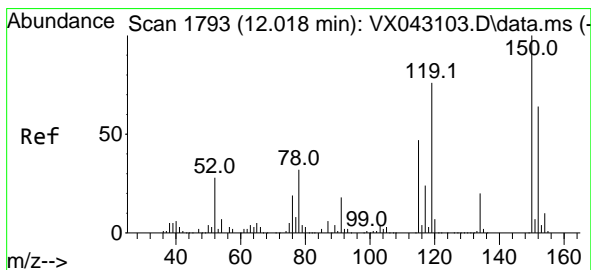
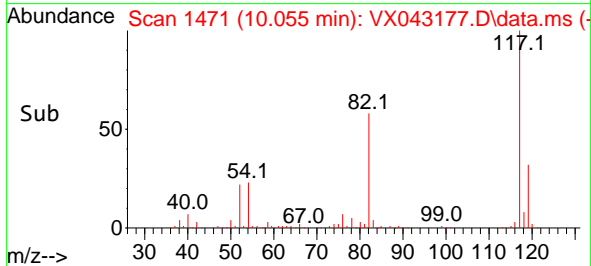
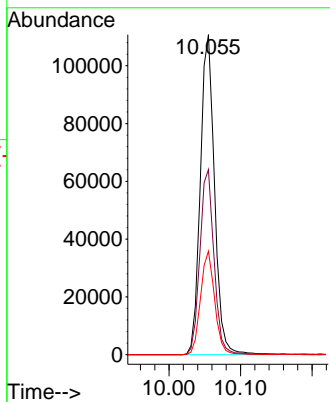
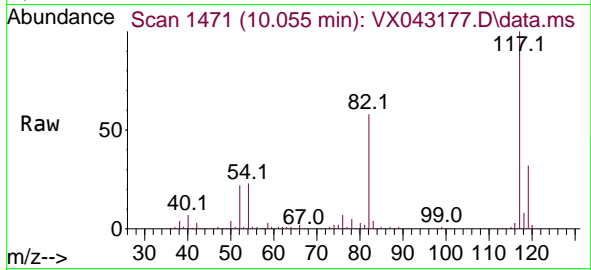




#63  
 Chlorobenzene-d5  
 Concen: 50.000 ug/l  
 RT: 10.055 min Scan# 1471  
 Delta R.T. -0.000 min  
 Lab File: VX043177.D  
 Acq: 26 Sep 2024 14:48

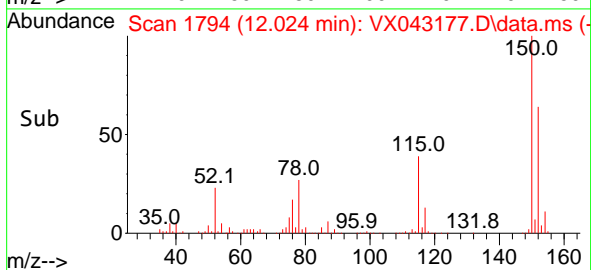
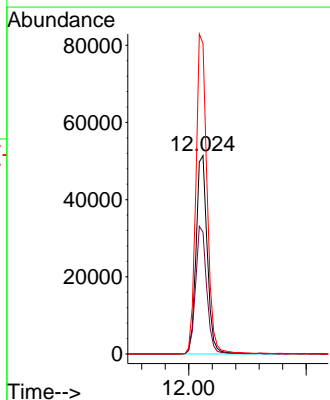
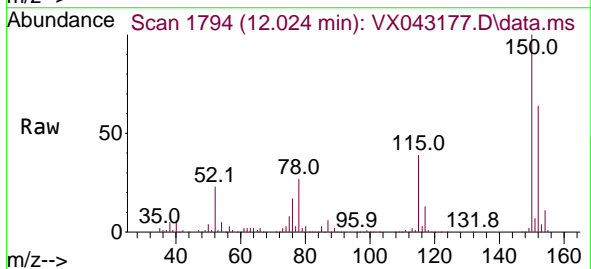
Instrument : MSVOA\_X  
 ClientSampleId : 5602-75-001-NEUTRALIZATION-OUTFALL

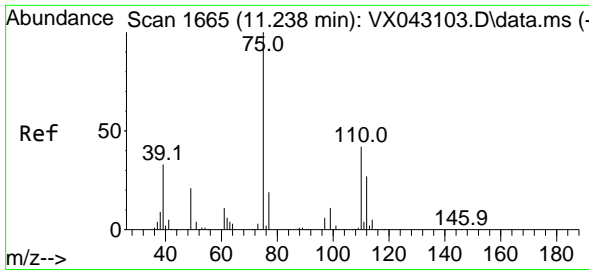
Tgt Ion	Resp	Lower	Upper
117	152996	100	100
82	57.9	44.7	67.1
119	32.4	26.3	39.5



#72  
 1,4-Dichlorobenzene-d4  
 Concen: 50.000 ug/l  
 RT: 12.024 min Scan# 1794  
 Delta R.T. 0.006 min  
 Lab File: VX043177.D  
 Acq: 26 Sep 2024 14:48

Tgt Ion	Resp	Lower	Upper
152	67676	100	100
115	64.4	43.7	131.1
150	161.0	0.0	344.6

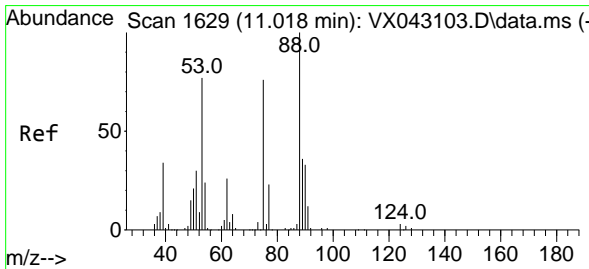
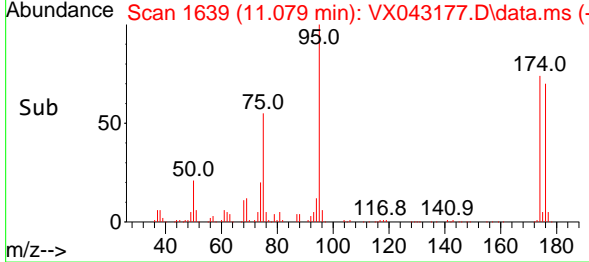
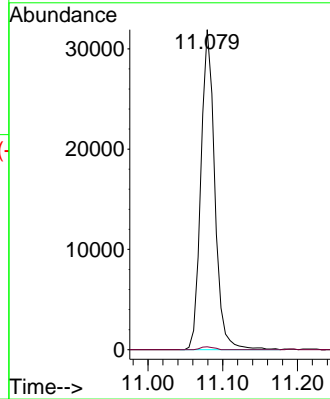
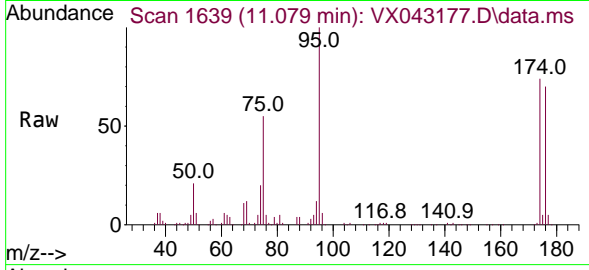




#76  
 1,2,3-Trichloropropane  
 Concen: 28.650 ug/l  
 RT: 11.079 min Scan# 1639  
 Delta R.T. -0.159 min  
 Lab File: VX043177.D  
 Acq: 26 Sep 2024 14:48

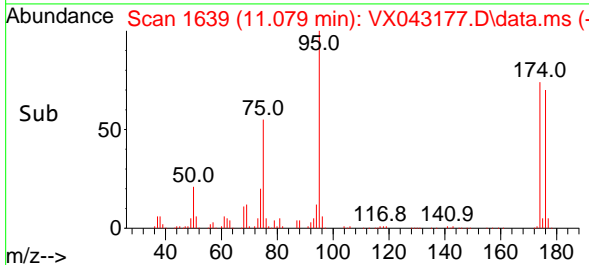
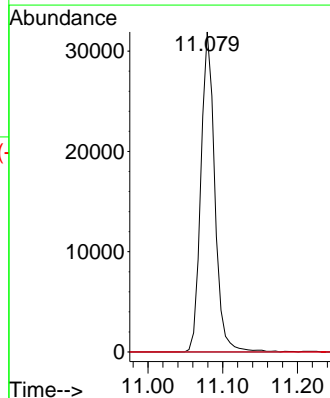
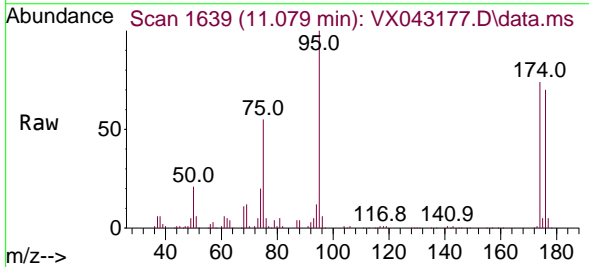
Instrument : MSVOA\_X  
 ClientSampleId : 5602-75-001-NEUTRALIZATION-OUTFALL

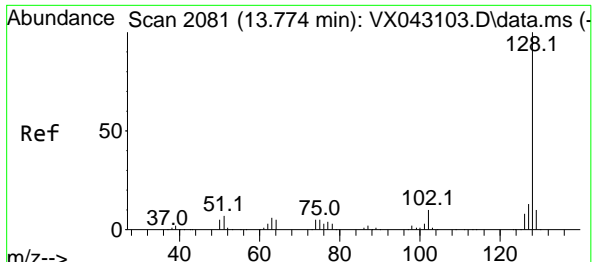
Tgt Ion: 75 Resp: 41223  
 Ion Ratio Lower Upper  
 75 100  
 77 0.9 21.9 65.7#



#81  
 trans-1,4-Dichloro-2-butene  
 Concen: 68.262 ug/l  
 RT: 11.079 min Scan# 1639  
 Delta R.T. 0.061 min  
 Lab File: VX043177.D  
 Acq: 26 Sep 2024 14:48

Tgt Ion: 75 Resp: 41223  
 Ion Ratio Lower Upper  
 75 100  
 53 0.0 85.4 128.2#  
 89 0.0 38.8 58.2#





#95  
 Naphthalene  
 Concen: 0.230 ug/l  
 RT: 13.786 min Scan# 20  
 Delta R.T. 0.012 min  
 Lab File: VX043177.D  
 Acq: 26 Sep 2024 14:48

Instrument : MSVOA\_X  
 ClientSampleId : 5602-75-001-NEUTRALIZATION-OUTFALL

Tgt Ion:128 Resp: 1086

Ion	Ratio	Lower	Upper
128	100		
127	7.6	10.2	15.4#
129	2.1	8.6	13.0#

