

Data Path : Z:\voasrv\HPCHEM1\MSVOA\_X\Data\VX092624\  
 Data File : VX043184.D  
 Acq On : 26 Sep 2024 17:30  
 Operator : JC/MD  
 Sample : IBLK  
 Misc : 5.0mL/MSVOA\_X/WATER  
 ALS Vial : 22 Sample Multiplier: 1

Instrument :  
 MSVOA\_X  
 ClientSampleId :  
 IBLK

Quant Time: Sep 27 01:43:47 2024  
 Quant Method : Z:\voasrv\HPCHEM1\MSVOA\_X\Method\82X092324W.M  
 Quant Title : SW846 8260  
 QLast Update : Tue Sep 24 03:13:52 2024  
 Response via : Initial Calibration

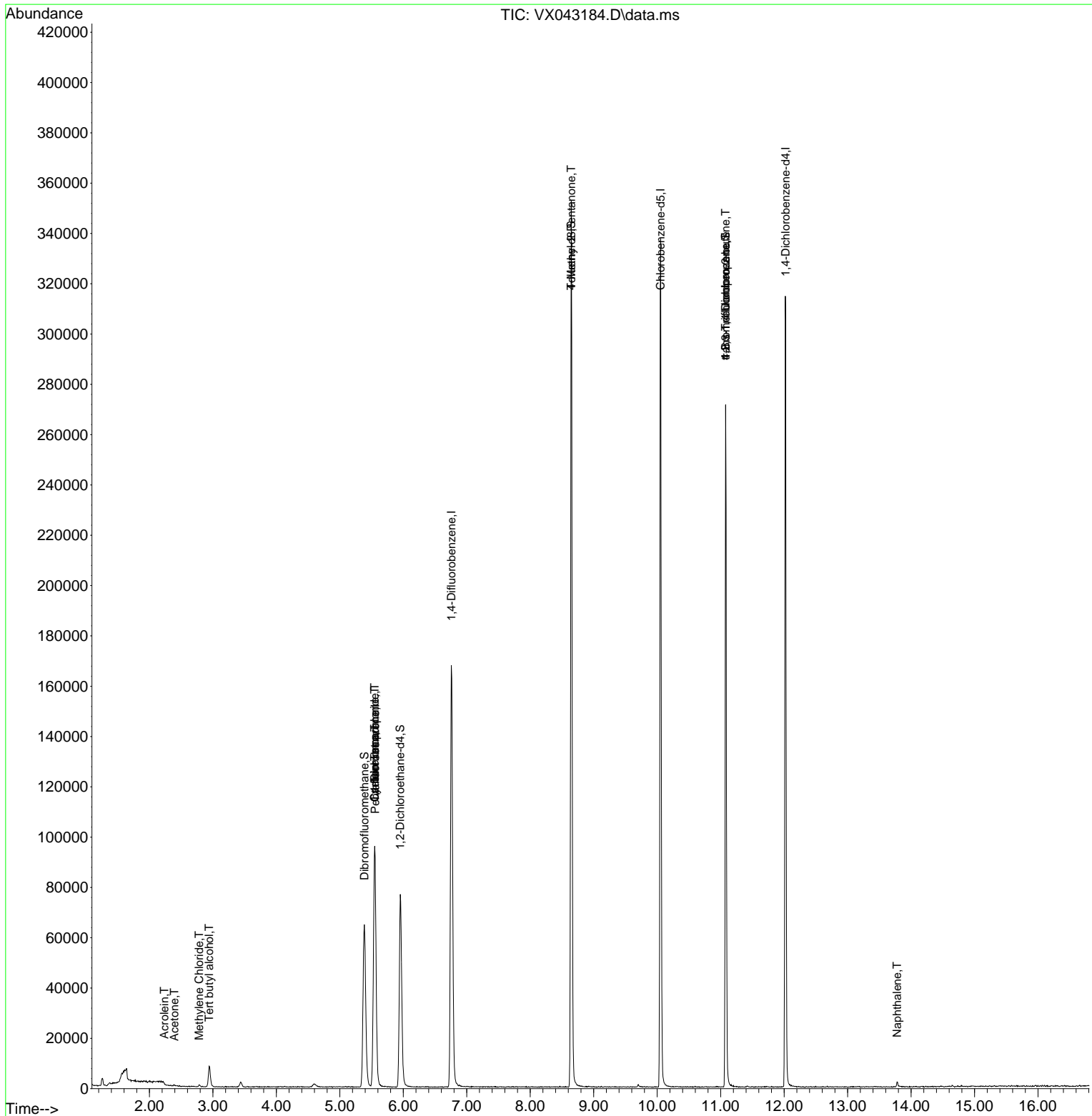
Compound	R.T.	QIon	Response	Conc	Units	Dev(Min)
-----						
Internal Standards						
1) Pentafluorobenzene	5.556	168	87408	50.000	ug/l	0.00
34) 1,4-Difluorobenzene	6.757	114	169157	50.000	ug/l	0.00
63) Chlorobenzene-d5	10.055	117	149436	50.000	ug/l	0.00
72) 1,4-Dichlorobenzene-d4	12.024	152	64868	50.000	ug/l	0.00
System Monitoring Compounds						
33) 1,2-Dichloroethane-d4	5.952	65	77038	53.061	ug/l	0.00
Spiked Amount	50.000	Range 74 - 125	Recovery	=	106.120%	
35) Dibromofluoromethane	5.385	113	57360	48.069	ug/l	0.00
Spiked Amount	50.000	Range 75 - 124	Recovery	=	96.140%	
50) Toluene-d8	8.647	98	205125	50.809	ug/l	0.00
Spiked Amount	50.000	Range 86 - 113	Recovery	=	101.620%	
62) 4-Bromofluorobenzene	11.079	95	73102	44.963	ug/l	0.00
Spiked Amount	50.000	Range 77 - 121	Recovery	=	89.920%	
Target Compounds						
						Qvalue
11) Tert butyl alcohol	2.940	59	4771	14.718	ug/l #	71
13) Acrolein	2.233	56	43	1.007	ug/l #	6
16) Acetone	2.392	43	619	0.912	ug/l #	84
20) Methylene Chloride	2.782	84	272	0.252	ug/l #	84
31) Cyclohexane	5.550	56	2135	1.495	ug/l #	10
36) 1,1-Dichloropropene	5.550	75	7620	5.197	ug/l #	50
38) Carbon Tetrachloride	5.550	117	9894	5.238	ug/l #	16
51) 4-Methyl-2-Pentanone	8.647	43	1039	0.550	ug/l #	1
76) 1,2,3-Trichloropropane	11.079	75	40329	29.242	ug/l #	33
81) trans-1,4-Dichloro-2-b...	11.079	75	40329	69.672	ug/l #	7
95) Naphthalene	13.780	128	2226	0.493	ug/l #	90
-----						

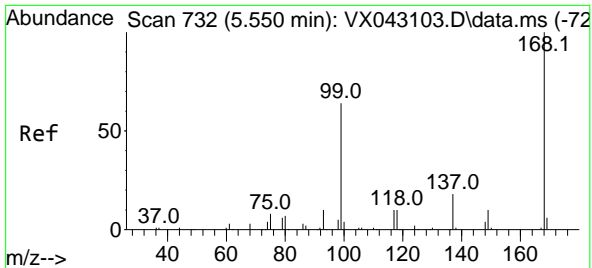
(#) = qualifier out of range (m) = manual integration (+) = signals summed

Data Path : Z:\voasrv\HPCHEM1\MSVOA\_X\Data\VX092624\  
 Data File : VX043184.D  
 Acq On : 26 Sep 2024 17:30  
 Operator : JC/MD  
 Sample : IBLK  
 Misc : 5.0mL/MSVOA\_X/WATER  
 ALS Vial : 22 Sample Multiplier: 1

Instrument :  
 MSVOA\_X  
 ClientSampleId :  
 IBLK

Quant Time: Sep 27 01:43:47 2024  
 Quant Method : Z:\voasrv\HPCHEM1\MSVOA\_X\Method\82X092324W.M  
 Quant Title : SW846 8260  
 QLast Update : Tue Sep 24 03:13:52 2024  
 Response via : Initial Calibration

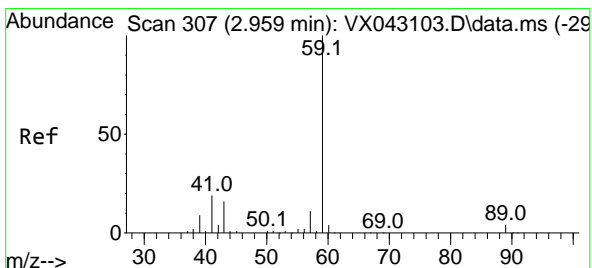
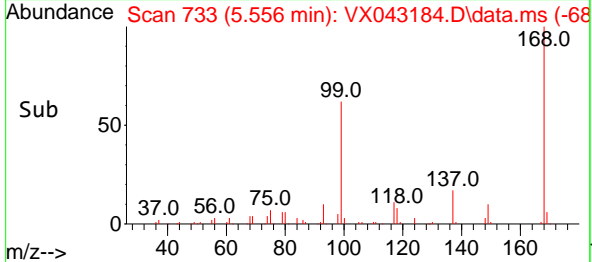
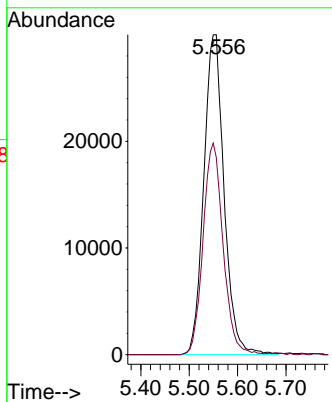
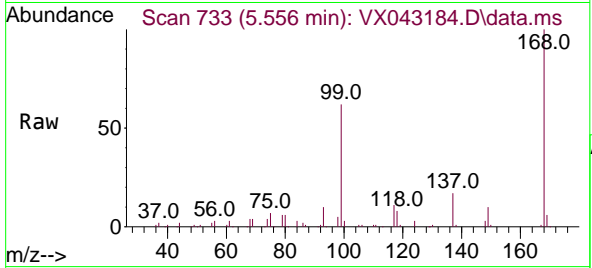




#1  
 Pentafluorobenzene  
 Concen: 50.000 ug/l  
 RT: 5.556 min Scan# 71  
 Delta R.T. 0.006 min  
 Lab File: VX043184.D  
 Acq: 26 Sep 2024 17:30

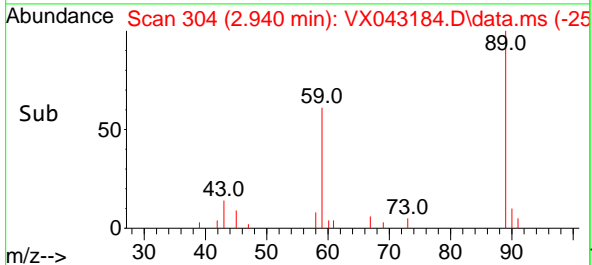
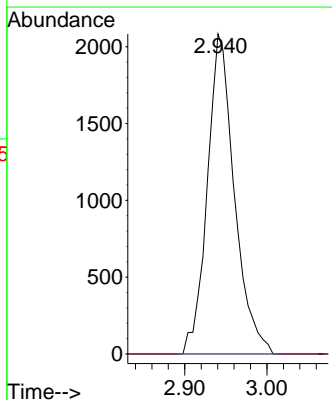
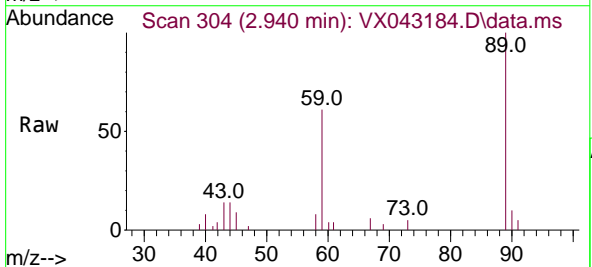
Instrument :  
 MSVOA\_X  
 ClientSampleId :  
 IBLK

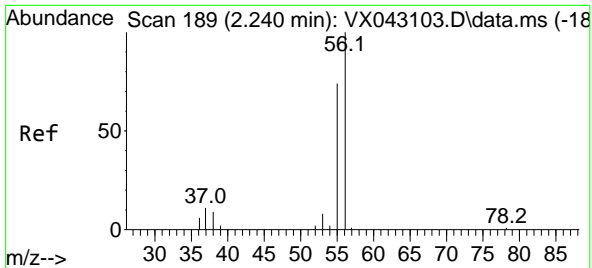
Tgt Ion:168 Resp: 87408  
 Ion Ratio Lower Upper  
 168 100  
 99 61.7 50.8 76.2



#11  
 Tert butyl alcohol  
 Concen: 14.718 ug/l  
 RT: 2.940 min Scan# 304  
 Delta R.T. -0.018 min  
 Lab File: VX043184.D  
 Acq: 26 Sep 2024 17:30

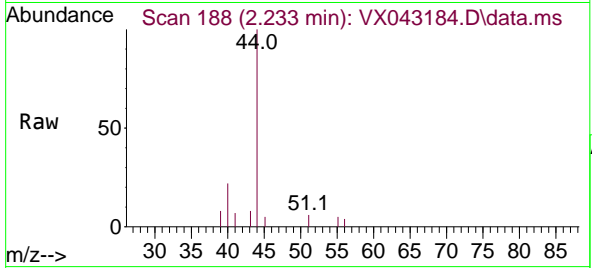
Tgt Ion: 59 Resp: 4771  
 Ion Ratio Lower Upper  
 59 100  
 57 0.0 8.6 13.0#



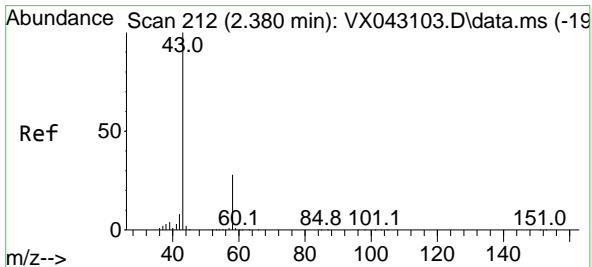
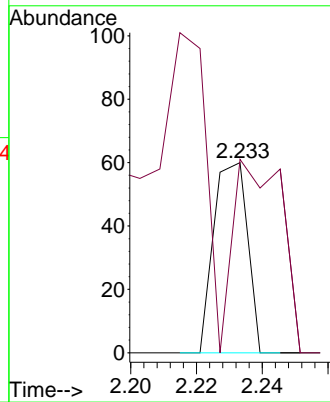
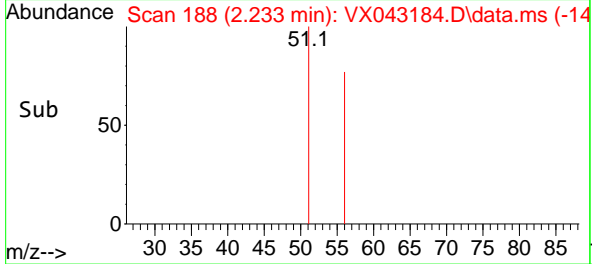


#13  
 Acrolein  
 Concen: 1.007 ug/l  
 RT: 2.233 min Scan# 11  
 Delta R.T. -0.006 min  
 Lab File: VX043184.D  
 Acq: 26 Sep 2024 17:30

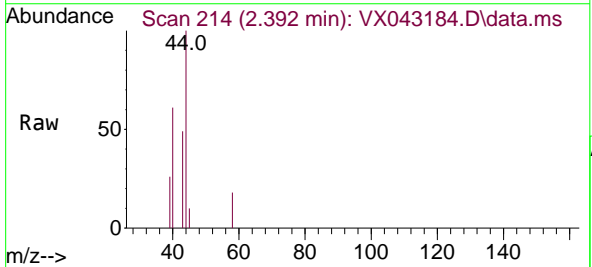
Instrument :  
 MSVOA\_X  
 ClientSampleId :  
 IBLK



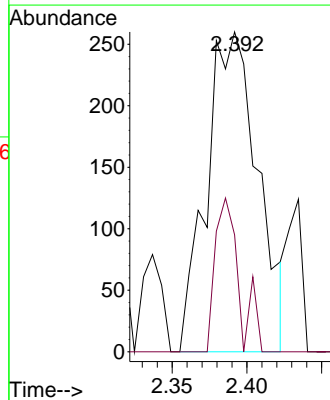
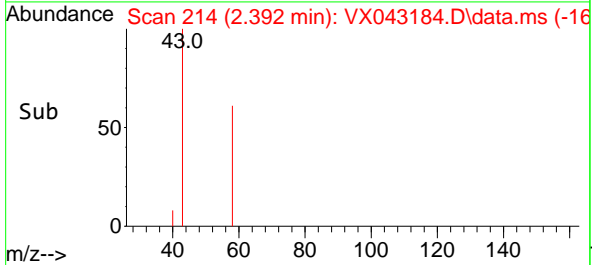
Tgt Ion: 56 Resp: 43  
 Ion Ratio Lower Upper  
 56 100  
 55 146.5 55.8 83.6#

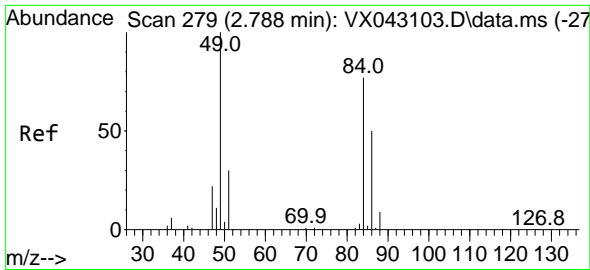


#16  
 Acetone  
 Concen: 0.912 ug/l  
 RT: 2.392 min Scan# 214  
 Delta R.T. 0.012 min  
 Lab File: VX043184.D  
 Acq: 26 Sep 2024 17:30



Tgt Ion: 43 Resp: 619  
 Ion Ratio Lower Upper  
 43 100  
 58 36.5 22.6 34.0#



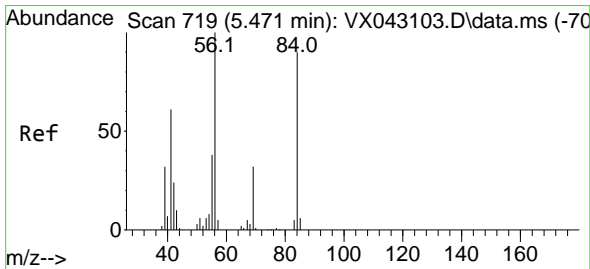
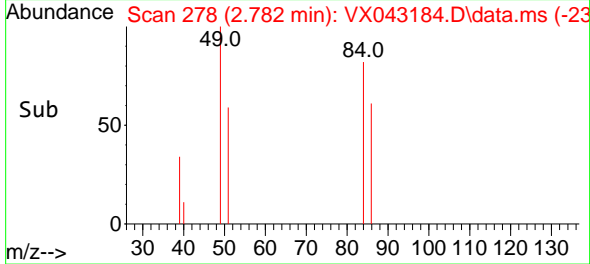
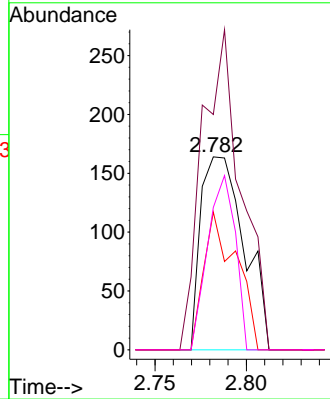
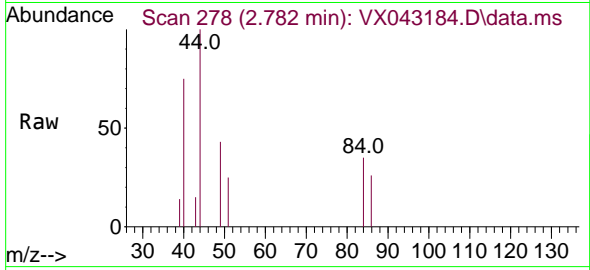


#20  
 Methylene Chloride  
 Concen: 0.252 ug/l  
 RT: 2.782 min Scan# 21  
 Delta R.T. -0.006 min  
 Lab File: VX043184.D  
 Acq: 26 Sep 2024 17:30

Instrument :  
 MSVOA\_X  
 ClientSampleId :  
 IBLK

Tgt Ion: 84 Resp: 272

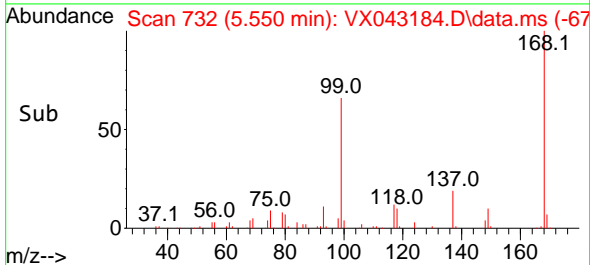
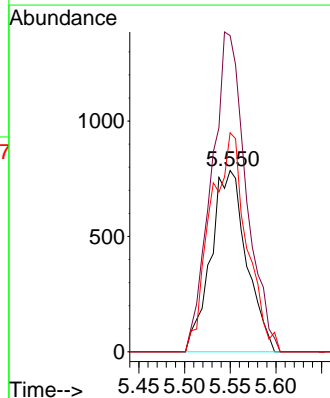
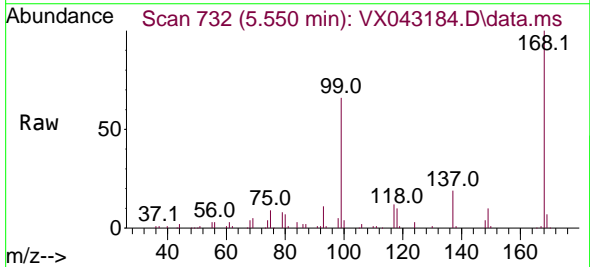
Ion	Ratio	Lower	Upper
84	100		
49	122.0	104.1	156.1
51	71.3	31.1	46.7#
86	73.8	52.1	78.1

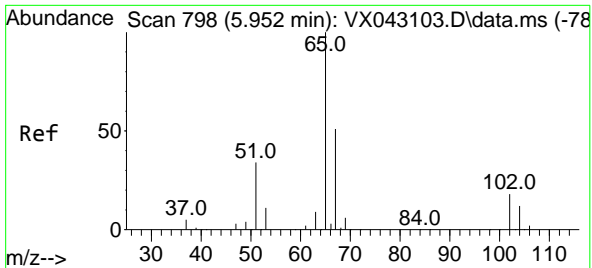


#31  
 Cyclohexane  
 Concen: 1.495 ug/l  
 RT: 5.550 min Scan# 732  
 Delta R.T. 0.079 min  
 Lab File: VX043184.D  
 Acq: 26 Sep 2024 17:30

Tgt Ion: 56 Resp: 2135

Ion	Ratio	Lower	Upper
56	100		
69	174.3	25.8	38.6#
84	120.7	72.4	108.6#

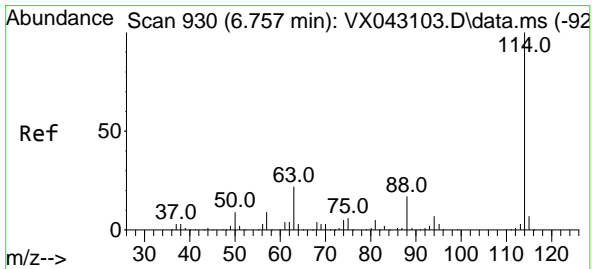
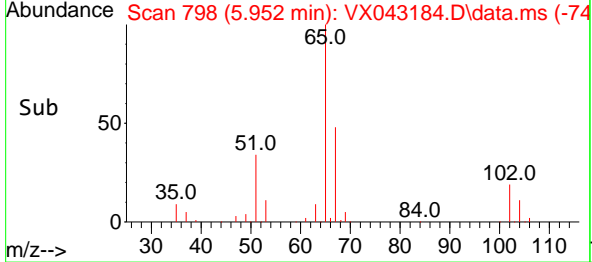
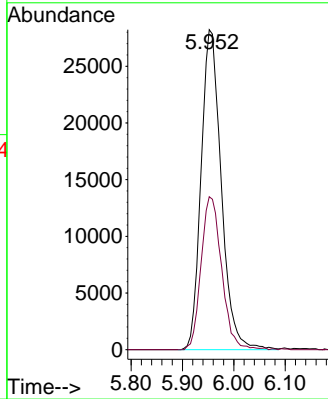
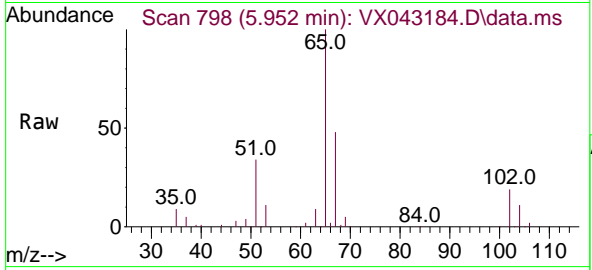




#33  
 1,2-Dichloroethane-d4  
 Concen: 53.061 ug/l  
 RT: 5.952 min Scan# 798  
 Delta R.T. -0.000 min  
 Lab File: VX043184.D  
 Acq: 26 Sep 2024 17:30

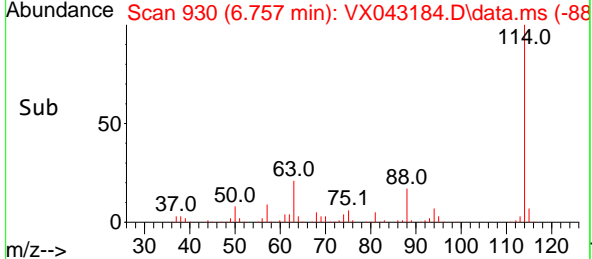
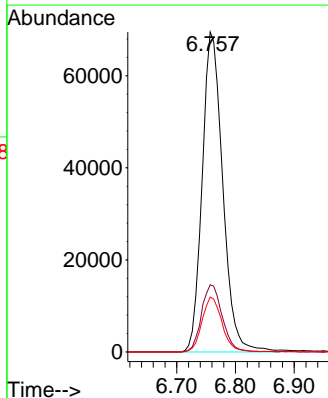
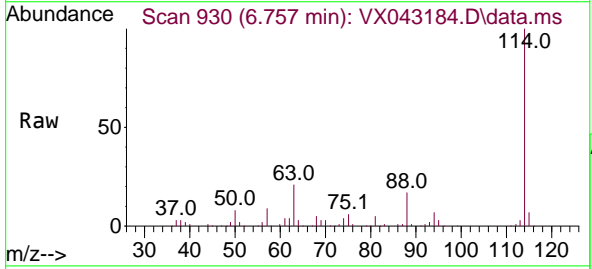
Instrument : MSVOA\_X  
 ClientSampleId : IBLK

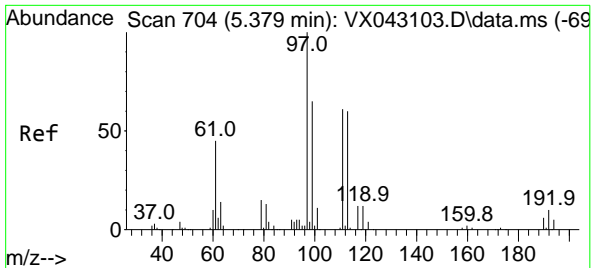
Tgt Ion: 65 Resp: 77038  
 Ion Ratio Lower Upper  
 65 100  
 67 48.7 0.0 99.0



#34  
 1,4-Difluorobenzene  
 Concen: 50.000 ug/l  
 RT: 6.757 min Scan# 930  
 Delta R.T. -0.000 min  
 Lab File: VX043184.D  
 Acq: 26 Sep 2024 17:30

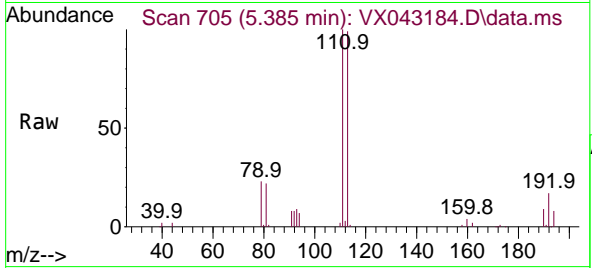
Tgt Ion: 114 Resp: 169157  
 Ion Ratio Lower Upper  
 114 100  
 63 21.0 0.0 43.2  
 88 17.2 0.0 33.4



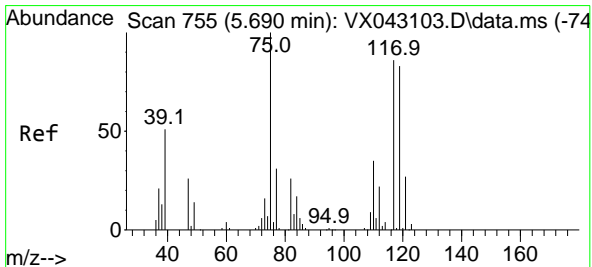
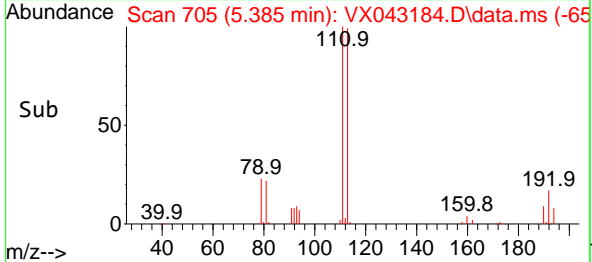
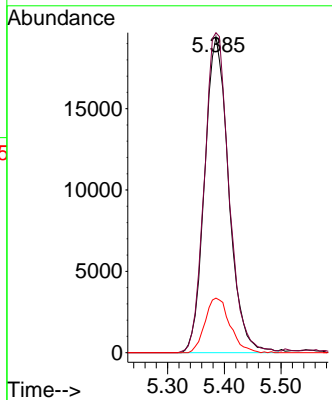


#35  
 Dibromofluoromethane  
 Concen: 48.069 ug/l  
 RT: 5.385 min Scan# 705  
 Delta R.T. 0.006 min  
 Lab File: VX043184.D  
 Acq: 26 Sep 2024 17:30

Instrument : MSVOA\_X  
 ClientSampleId : IBLK

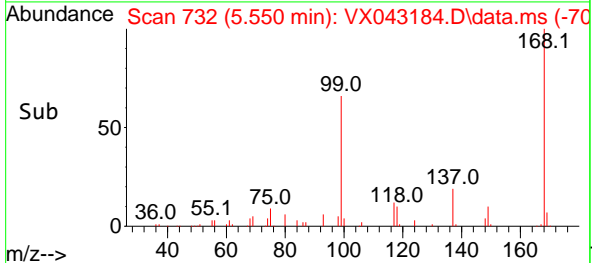
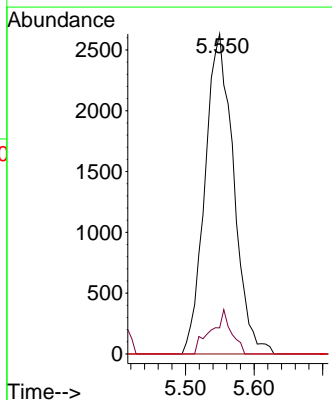
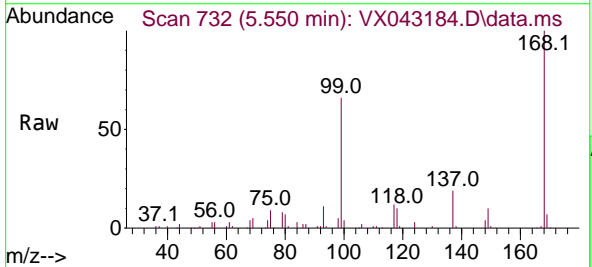


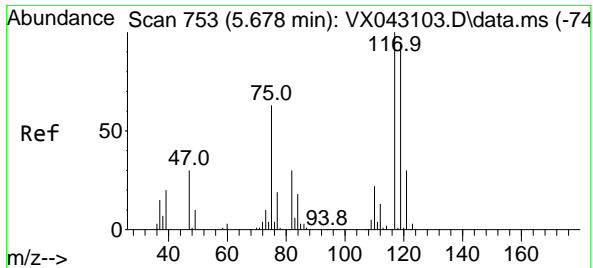
Tgt Ion: 113 Resp: 57360  
 Ion Ratio Lower Upper  
 113 100  
 111 103.5 82.6 124.0  
 192 17.8 14.6 22.0



#36  
 1,1-Dichloropropene  
 Concen: 5.197 ug/l  
 RT: 5.550 min Scan# 732  
 Delta R.T. -0.140 min  
 Lab File: VX043184.D  
 Acq: 26 Sep 2024 17:30

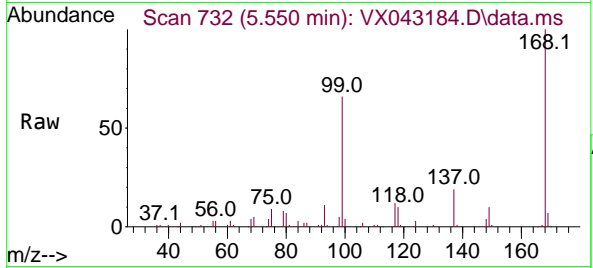
Tgt Ion: 75 Resp: 7620  
 Ion Ratio Lower Upper  
 75 100  
 110 9.7 17.8 53.4#  
 77 0.0 25.2 37.8#



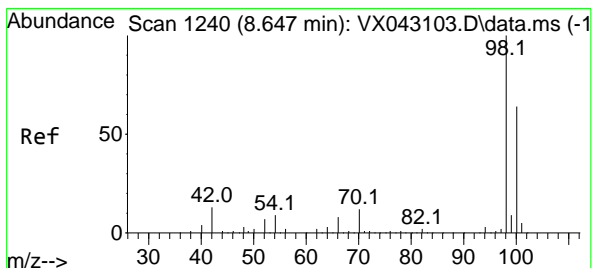
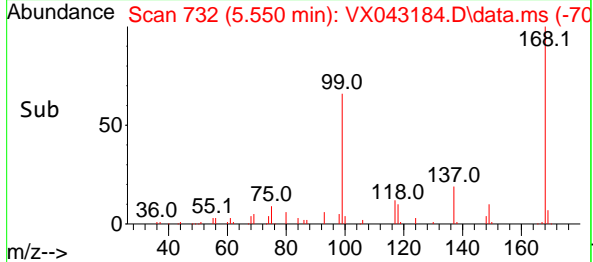
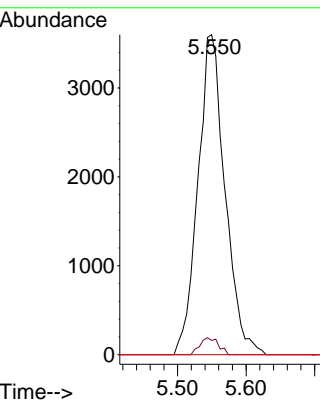


#38  
 Carbon Tetrachloride  
 Concen: 5.238 ug/l  
 RT: 5.550 min Scan# 71  
 Delta R.T. -0.128 min  
 Lab File: VX043184.D  
 Acq: 26 Sep 2024 17:30

Instrument :  
 MSVOA\_X  
 ClientSampleId :  
 IBLK

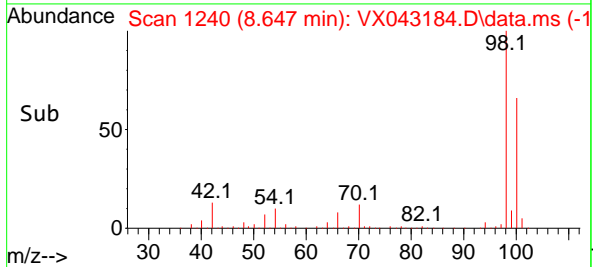
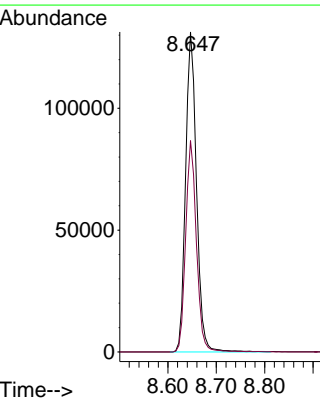
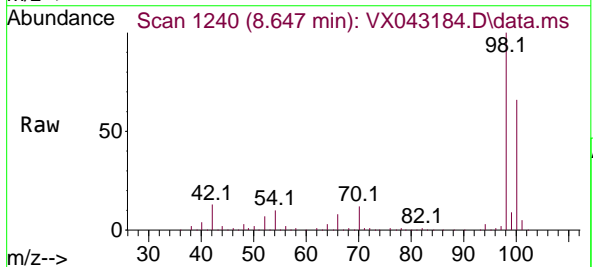


Tgt Ion:117 Resp: 9894  
 Ion Ratio Lower Upper  
 117 100  
 119 4.4 75.5 113.3#  
 121 0.0 24.2 36.2#

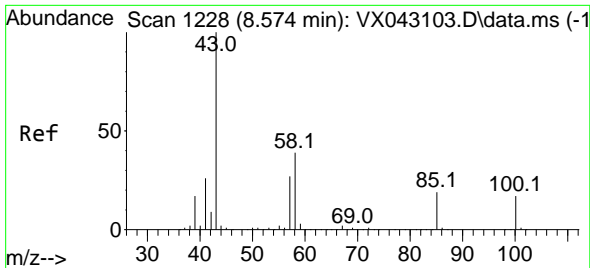


#50  
 Toluene-d8  
 Concen: 50.809 ug/l  
 RT: 8.647 min Scan# 1240  
 Delta R.T. -0.000 min  
 Lab File: VX043184.D  
 Acq: 26 Sep 2024 17:30

Tgt Ion: 98 Resp: 205125  
 Ion Ratio Lower Upper  
 98 100  
 100 65.1 52.2 78.4



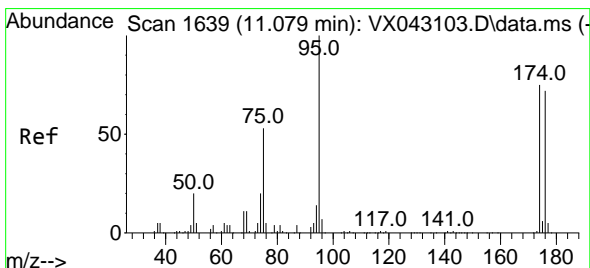
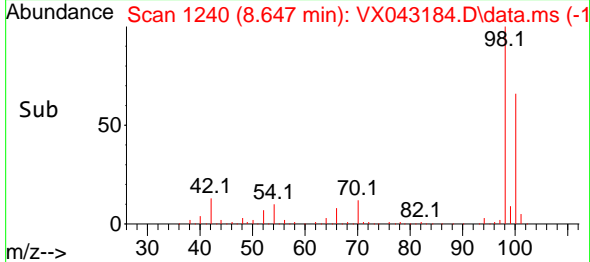
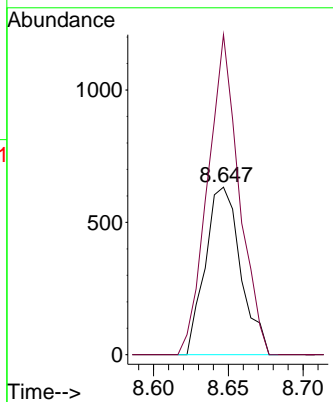
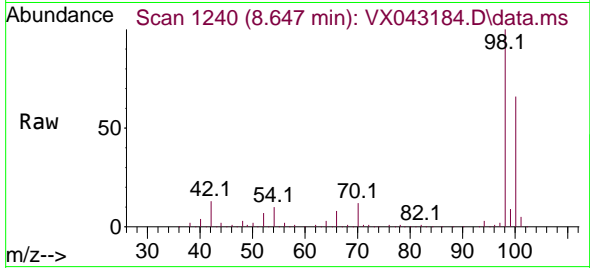




#51  
 4-Methyl-2-Pentanone  
 Concen: 0.550 ug/l  
 RT: 8.647 min Scan# 11  
 Delta R.T. 0.073 min  
 Lab File: VX043184.D  
 Acq: 26 Sep 2024 17:30

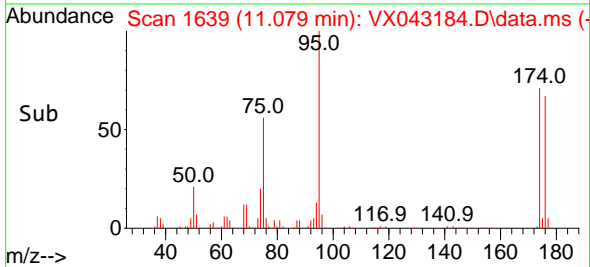
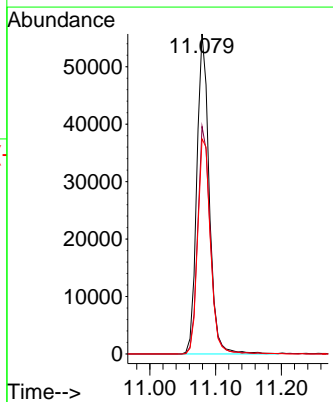
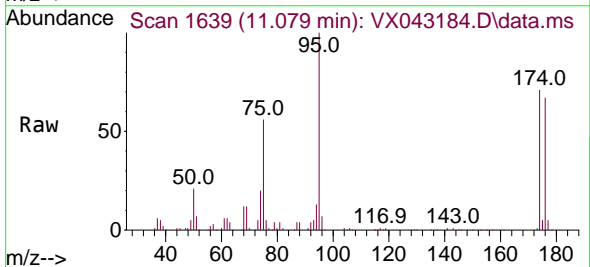
Instrument :  
 MSVOA\_X  
 ClientSampleId :  
 IBLK

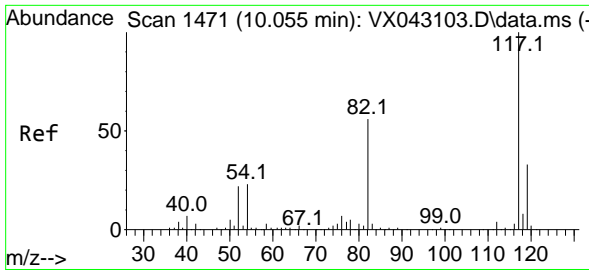
Tgt Ion: 43 Resp: 1039  
 Ion Ratio Lower Upper  
 43 100  
 58 169.8 30.3 45.5#



#62  
 4-Bromofluorobenzene  
 Concen: 44.963 ug/l  
 RT: 11.079 min Scan# 1639  
 Delta R.T. -0.000 min  
 Lab File: VX043184.D  
 Acq: 26 Sep 2024 17:30

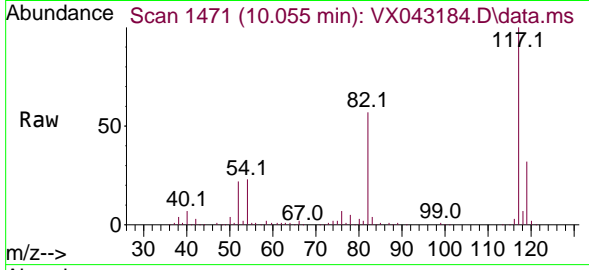
Tgt Ion: 95 Resp: 73102  
 Ion Ratio Lower Upper  
 95 100  
 174 72.1 0.0 146.0  
 176 69.8 0.0 142.6



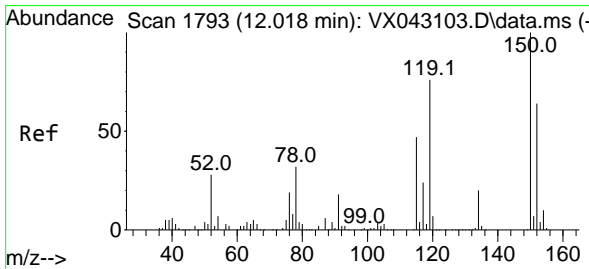
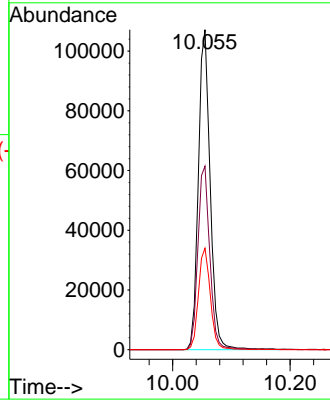
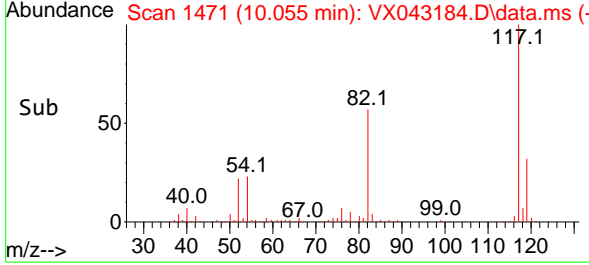


#63  
 Chlorobenzene-d5  
 Concen: 50.000 ug/l  
 RT: 10.055 min Scan# 14  
 Delta R.T. -0.000 min  
 Lab File: VX043184.D  
 Acq: 26 Sep 2024 17:30

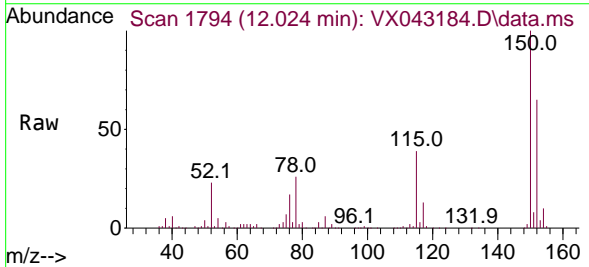
Instrument :  
 MSVOA\_X  
 ClientSampleId :  
 IBLK



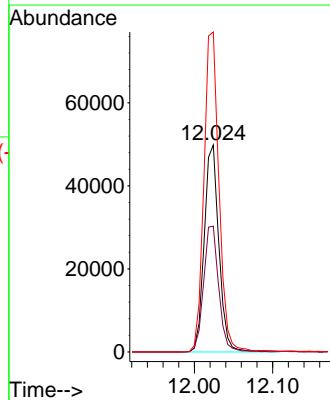
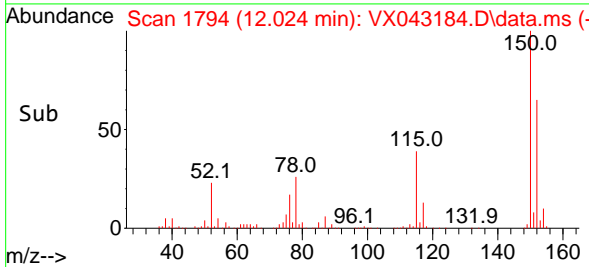
Tgt Ion:117 Resp: 149436  
 Ion Ratio Lower Upper  
 117 100  
 82 57.3 44.7 67.1  
 119 31.7 26.3 39.5

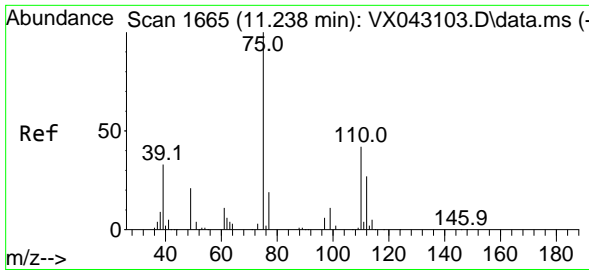


#72  
 1,4-Dichlorobenzene-d4  
 Concen: 50.000 ug/l  
 RT: 12.024 min Scan# 1794  
 Delta R.T. 0.006 min  
 Lab File: VX043184.D  
 Acq: 26 Sep 2024 17:30



Tgt Ion:152 Resp: 64868  
 Ion Ratio Lower Upper  
 152 100  
 115 62.8 43.7 131.1  
 150 158.8 0.0 344.6

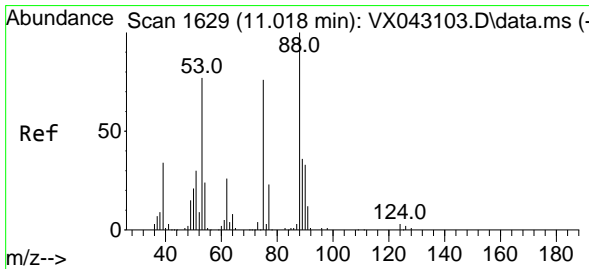
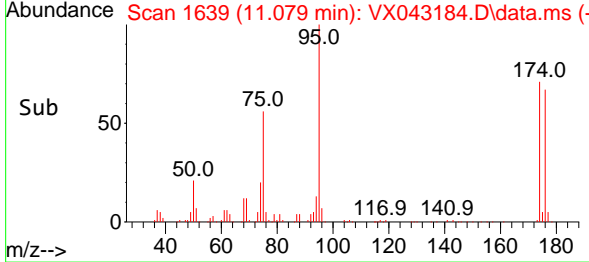
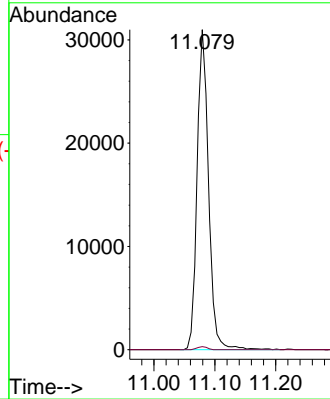
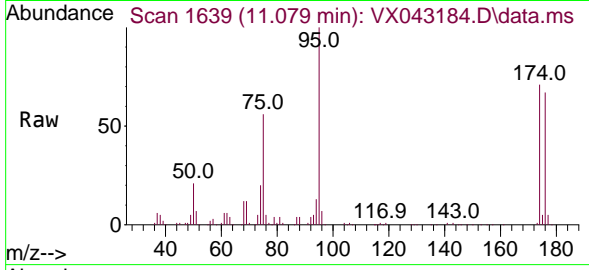




#76  
 1,2,3-Trichloropropane  
 Concen: 29.242 ug/l  
 RT: 11.079 min Scan# 1639  
 Delta R.T. -0.159 min  
 Lab File: VX043184.D  
 Acq: 26 Sep 2024 17:30

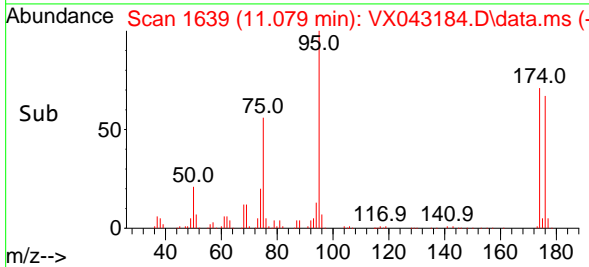
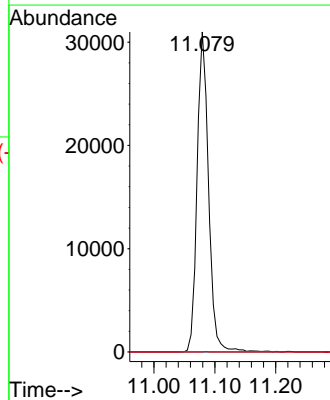
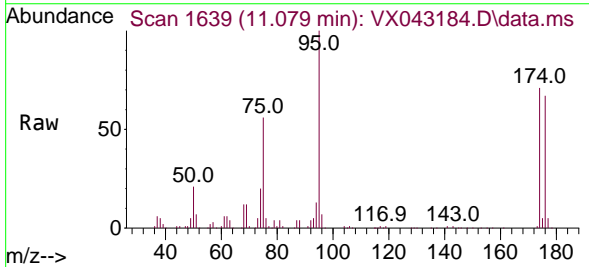
Instrument : MSVOA\_X  
 ClientSampleId : IBLK

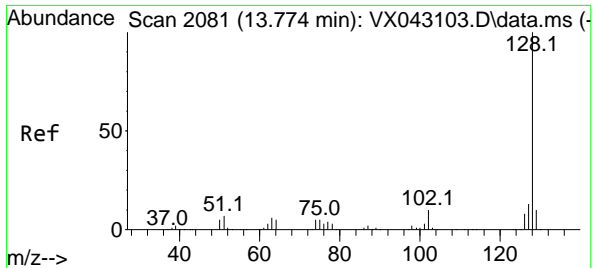
Tgt Ion: 75 Resp: 40329  
 Ion Ratio Lower Upper  
 75 100  
 77 0.8 21.9 65.7#



#81  
 trans-1,4-Dichloro-2-butene  
 Concen: 69.672 ug/l  
 RT: 11.079 min Scan# 1639  
 Delta R.T. 0.061 min  
 Lab File: VX043184.D  
 Acq: 26 Sep 2024 17:30

Tgt Ion: 75 Resp: 40329  
 Ion Ratio Lower Upper  
 75 100  
 53 0.0 85.4 128.2#  
 89 0.0 38.8 58.2#





#95  
 Naphthalene  
 Concen: 0.493 ug/l  
 RT: 13.780 min Scan# 2082  
 Delta R.T. 0.006 min  
 Lab File: VX043184.D  
 Acq: 26 Sep 2024 17:30

Instrument : MSVOA\_X  
 ClientSampleId : IBLK

Tgt Ion:128 Resp: 2226

Ion	Ratio	Lower	Upper
128	100		
127	8.2	10.2	15.4#
129	7.8	8.6	13.0#

