

Data Path : Z:\VOASRV\HPCHEM1\MSVOA X\DATA\VX092718\
 Data File : VX004775.D
 Acq On : 27 Sep 2018 15:43
 Operator : JC/MD
 Sample : J5048-14
 Misc : 5.0mL/MSVOA X/WATER
 ALS Vial : 14 Sample Multiplier: 1

Instrument :
 MSVOA_X
 ClientSampled :
 MW-123-SEP18

Quant Time: Sep 28 05:50:24 2018
 Quant Method : Z:\VOASRV\HPCHEM1\MSVOA_X\METHOD\82X092618W.M
 Quant Title : SW846 8260
 QLast Update : Wed Sep 26 14:17:02 2018
 Response via : Initial Calibration

Internal Standards	R.T.	QIon	Response	Conc	Units	Dev(Min)
1) Pentafluorobenzene	5.67	168	251194	50.00	ug/l	0.00
34) 1,4-Difluorobenzene	6.86	114	409085	50.00	ug/l	0.00
63) Chlorobenzene-d5	10.12	117	397981	50.00	ug/l	0.00
72) 1,4-Dichlorobenzene-d4	12.08	152	222588	50.00	ug/l	0.00

System Monitoring Compounds

33) 1,2-Dichloroethane-d4	6.07	65	190542	53.10	ug/l	0.00
Spiked Amount	50.000		Recovery	=	106.20%	
35) Dibromofluoromethane	5.50	113	160856	46.40	ug/l	0.00
Spiked Amount	50.000		Recovery	=	92.80%	
50) Toluene-d8	8.72	98	591512	51.32	ug/l	0.00
Spiked Amount	50.000		Recovery	=	102.64%	
62) 4-Bromofluorobenzene	11.14	95	213405	51.39	ug/l	0.00
Spiked Amount	50.000		Recovery	=	102.78%	

Target Compounds

						Qvalue
2) Dichlorodifluoromethane	1.45	85	853	0.249	ug/l	90
4) Vinyl Chloride	1.40	62	3021	0.775	ug/l #	31
5) Bromomethane	1.65	94	463	0.200	ug/l #	53
6) Chloroethane	1.57	64	8833	1.921	ug/l #	51
9) 1,1,2-Trichlorotrifluoroet	2.39	101	1543	0.561	ug/l	93
11) Tert butyl alcohol	3.02	59	14318	14.271	ug/l #	81
12) 1,1-Dichloroethene	2.37	96	6292	2.312	ug/l	95
13) Acrolein	2.29	56	172	0.241	ug/l #	49
16) Acetone	2.45	43	3905	1.864	ug/l	98
17) Carbon Disulfide	2.57	76	3273	0.400	ug/l	99
18) Methyl Acetate	2.62	43	18938	3.568	ug/l #	51
20) Methylene Chloride	2.85	84	698	Below Cal	#	77
21) trans-1,2-Dichloroethene	3.16	96	883	0.296	ug/l #	67
24) 1,1-Dichloroethane	3.70	63	49808	8.350	ug/l	98
25) 2-Butanone	4.70	43	1224	0.396	ug/l	99
26) 2,2-Dichloropropane	4.77	77	1312	0.316	ug/l #	52
27) cis-1,2-Dichloroethene	4.60	96	203235	61.060	ug/l	95
29) Tetrahydrofuran	5.16	42	522	0.272	ug/l #	72
31) Cyclohexane	5.66	56	4475	0.980	ug/l #	1
32) 1,1,1-Trichloroethane	5.49	97	5979	1.299	ug/l	96
36) 1,1-Dichloropropene	5.67	75	17229	3.642	ug/l #	50
38) Carbon Tetrachloride	5.67	117	22987	4.623	ug/l #	17
44) Trichloroethene	7.21	130	113872	31.279	ug/l	93
49) 1,4-Dioxane	7.76	88	53	0.519	ug/l #	1
51) 4-Methyl-2-Pentanone	8.65	43	4116	0.721	ug/l	93
56) Ethyl methacrylate	9.10	69	22	2.866	ug/l #	1
58) 2-Chloroethyl Vinyl ether	8.12	63	18	14.248	ug/l #	45
60) Dibromochloromethane	9.34	129	123440	34.628	ug/l #	11
64) Tetrachloroethene	9.34	164	138587	35.381	ug/l	98
70) Styrene	10.71	104	76	2.147	ug/l #	49
74) N-amyl acetate	10.90	43	256	1.780	ug/l #	83
76) 1,2,3-Trichloropropane	11.14	75	106843	21.416	ug/l #	37
80) 1,3,5-Trimethylbenzene	11.51	105	140	Below Cal	#	27
81) trans-1,4-Dichloro-2-buten	11.14	75	106843	58.074	ug/l #	10

Data Path : Z:\VOASRV\HPCHEM1\MSVOA X\DATA\VX092718\
 Data File : VX004775.D
 Acq On : 27 Sep 2018 15:43
 Operator : JC/MD
 Sample : J5048-14
 Misc : 5.0mL/MSVOA X/WATER
 ALS Vial : 14 Sample Multiplier: 1

Instrument :
 MSVOA_X
 ClientSampleId :
 MW-123-SEP18

Quant Time: Sep 28 05:50:24 2018
 Quant Method : Z:\VOASRV\HPCHEM1\MSVOA_X\METHOD\82X092618W.M
 Quant Title : SW846 8260
 QLast Update : Wed Sep 26 14:17:02 2018
 Response via : Initial Calibration

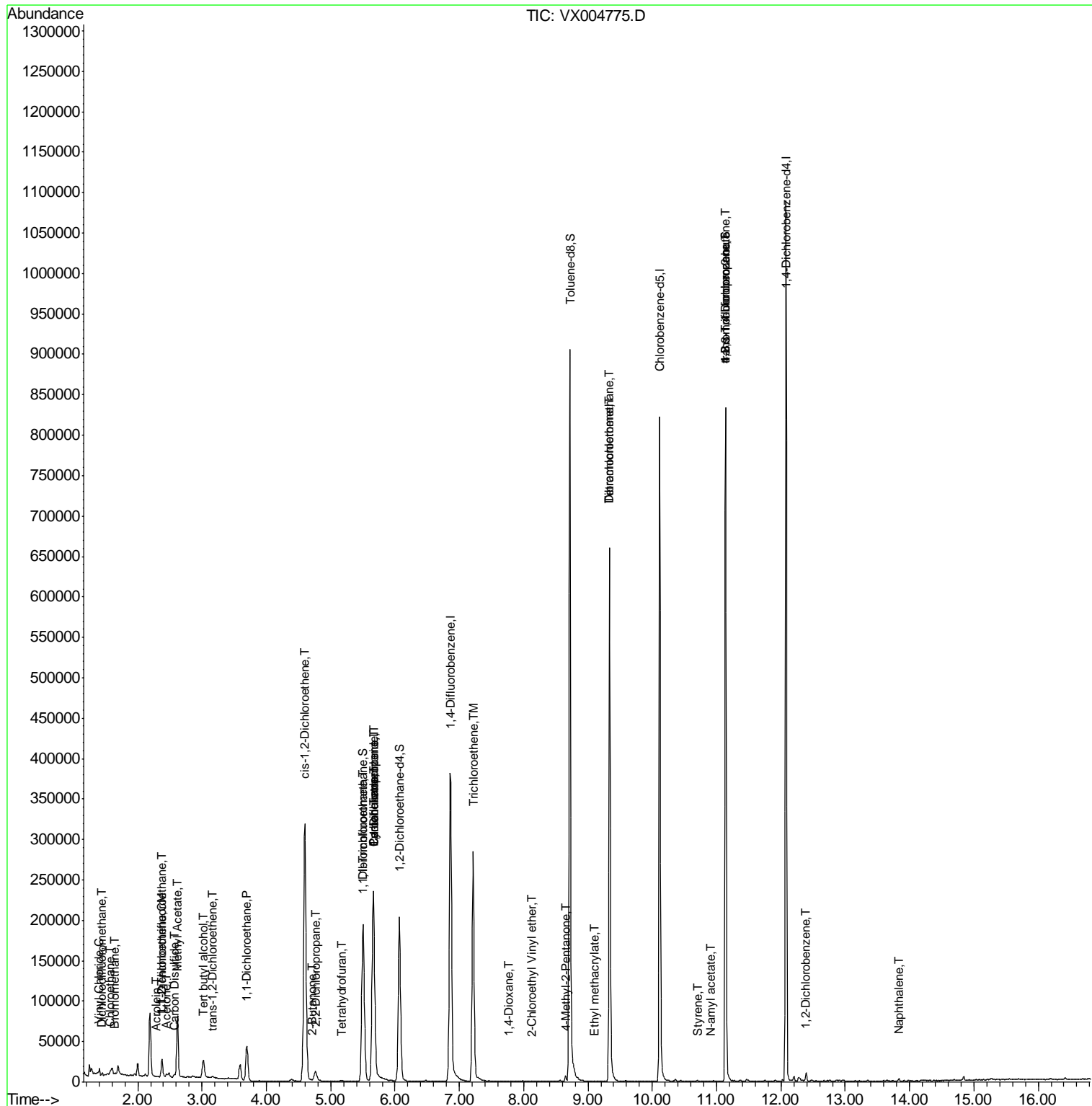
Internal Standards	R.T.	QIon	Response	Conc	Units	Dev(Min)
84) 1,2,4-Trimethylbenzene	11.80	105	328	Below Cal		66
91) 1,2-Dichlorobenzene	12.40	146	3252	0.409	ug/l	95
95) Naphthalene	13.83	128	1603	0.805	ug/l #	88

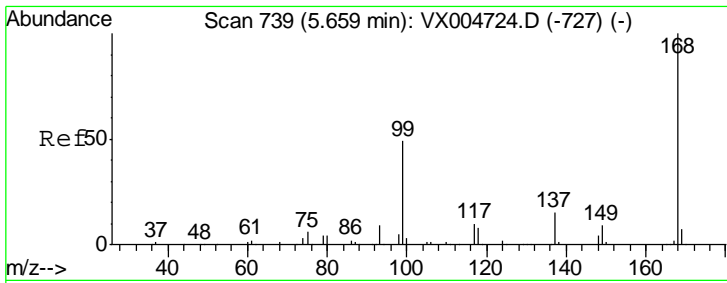
(#) = qualifier out of range (m) = manual integration (+) = signals summed

Data Path : Z:\VOASRV\HPCHEM1\MSVOA X\DATA\VX092718\
 Data File : VX004775.D
 Acq On : 27 Sep 2018 15:43
 Operator : JC/MD
 Sample : J5048-14
 Misc : 5.0mL/MSVOA X/WATER
 ALS Vial : 14 Sample Multiplier: 1

Instrument :
 MSVOA_X
 Client Sampled :
 MW-123-SEP18

Quant Time: Sep 28 05:50:24 2018
 Quant Method : Z:\VOASRV\HPCHEM1\MSVOA_X\METHOD\82X092618W.M
 Quant Title : SW846 8260
 QLast Update : Wed Sep 26 14:17:02 2018
 Response via : Initial Calibration

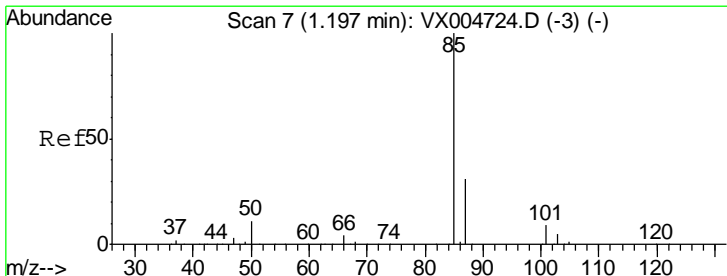
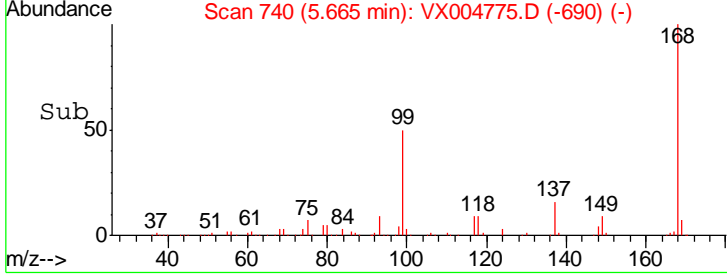
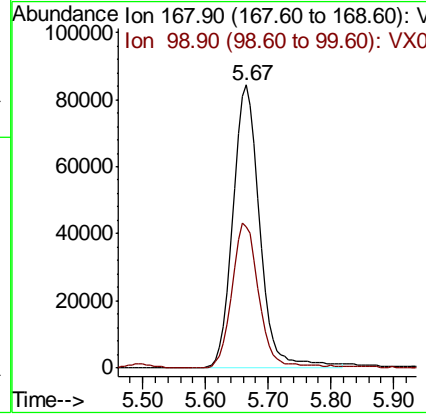
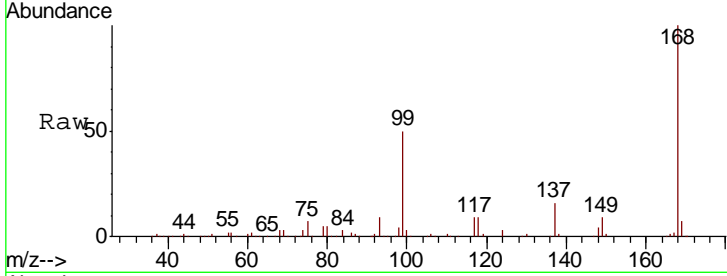




#1
 Pentafluorobenzene
 Concen: 50.000 ug/l
 RT: 5.67 min Scan# 740
 Delta R.T. 0.01 min
 Lab File: VX004775.D
 Acq: 27 Sep 2018 15:43

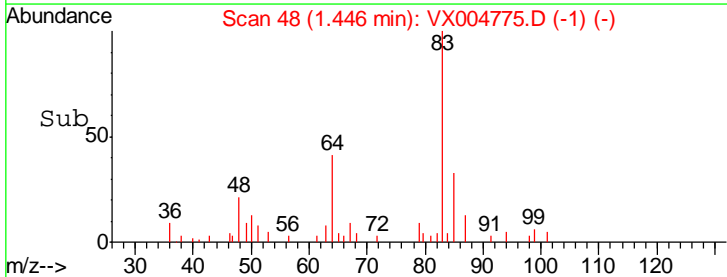
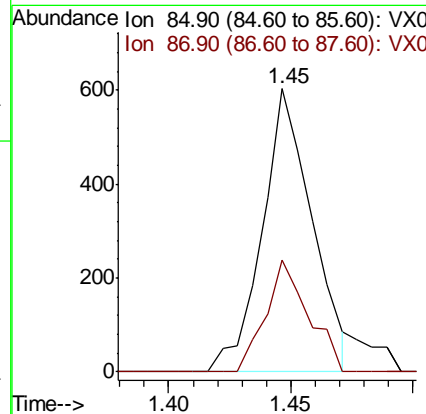
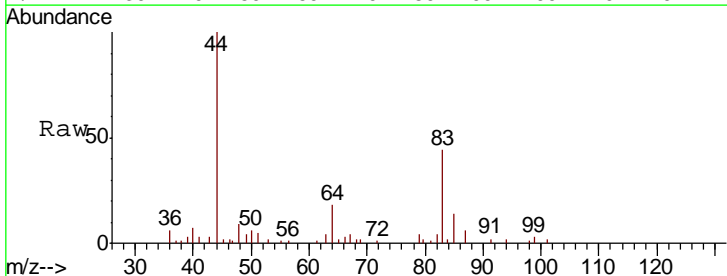
Instrument :
 MSVOA_X
 ClientSampleId :
 MW-123-SEP18

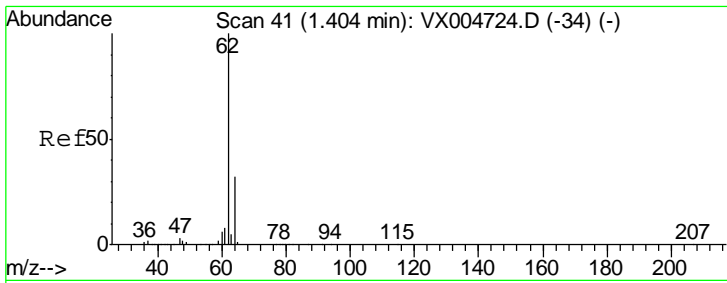
Tgt Ion	Resp	Lower	Upper
168	100		
99	49.9	39.9	59.9



#2
 Dichlorodifluoromethane
 Concen: 0.249 ug/l
 RT: 1.45 min Scan# 48
 Delta R.T. 0.25 min
 Lab File: VX004775.D
 Acq: 27 Sep 2018 15:43

Tgt Ion	Resp	Lower	Upper
85	100		
87	39.6	17.0	50.9

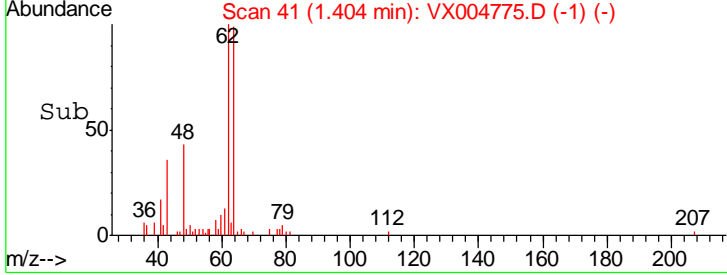
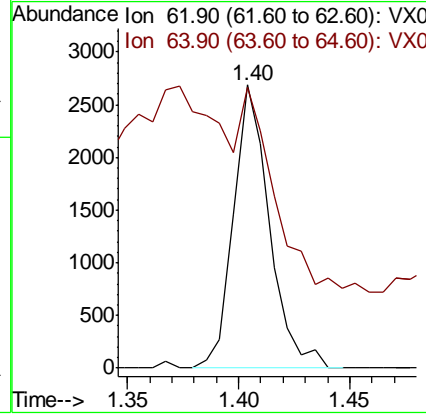
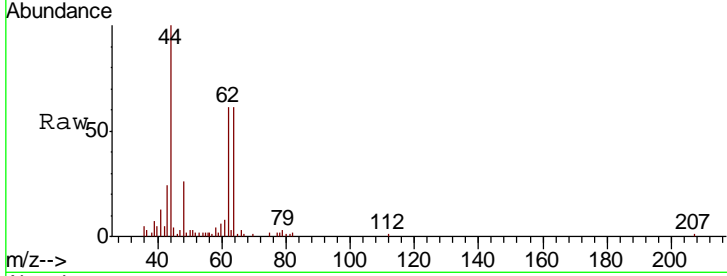




#4
 Vinyl Chloride
 Concen: 0.775 ug/l
 RT: 1.40 min Scan# 41
 Delta R.T. 0.00 min
 Lab File: VX004775.D
 Acq: 27 Sep 2018 15:43

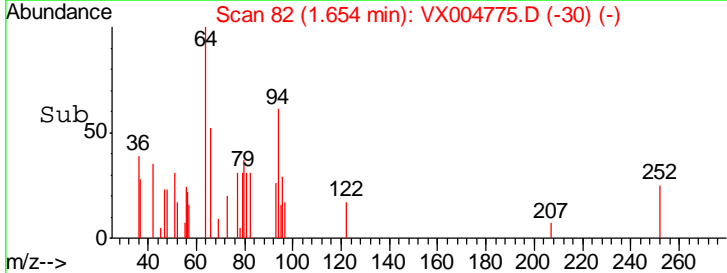
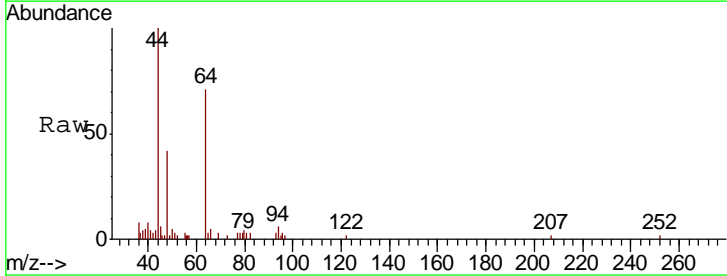
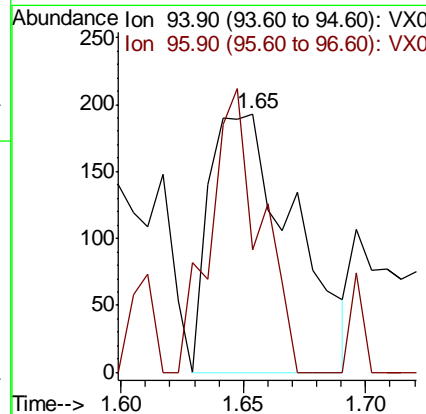
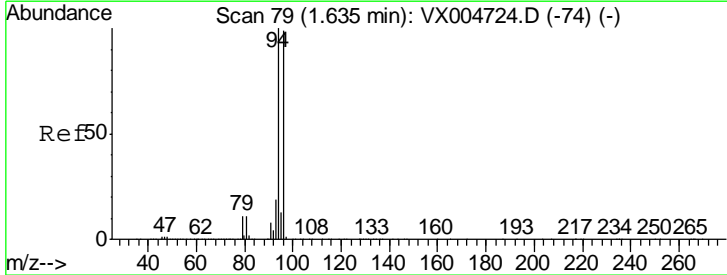
Instrument :
 MSVOA_X
ClientSampled :
 MW-123-SEP18

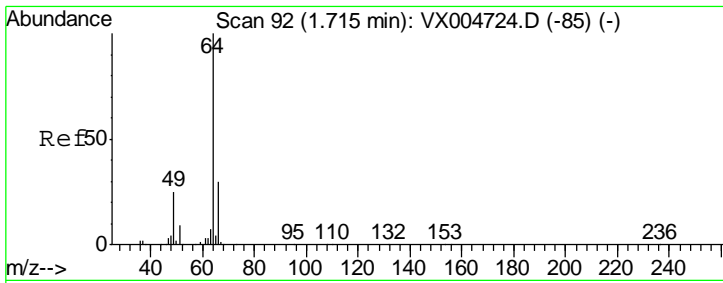
Tgt Ion: 62 Resp: 3021
 Ion Ratio Lower Upper
 62 100
 64 71.1 25.8 38.8#



#5
 Bromomethane
 Concen: 0.200 ug/l
 RT: 1.65 min Scan# 82
 Delta R.T. 0.02 min
 Lab File: VX004775.D
 Acq: 27 Sep 2018 15:43

Tgt Ion: 94 Resp: 463
 Ion Ratio Lower Upper
 94 100
 96 47.7 74.5 111.7#

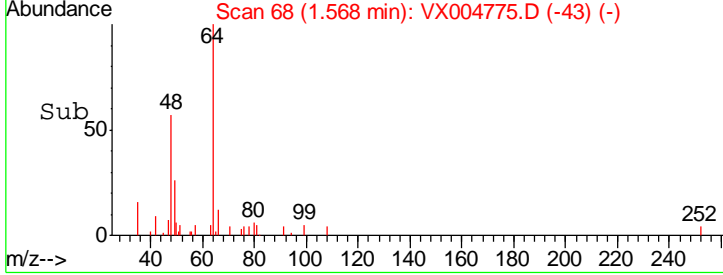
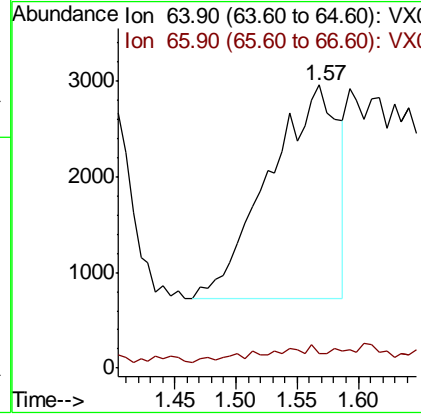
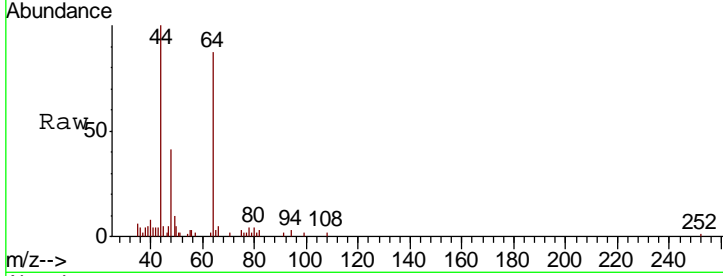




#6
 Chloroethane
 Concen: 1.921 ug/l
 RT: 1.57 min Scan# 68
 Delta R.T. -0.15 min
 Lab File: VX004775.D
 Acq: 27 Sep 2018 15:43

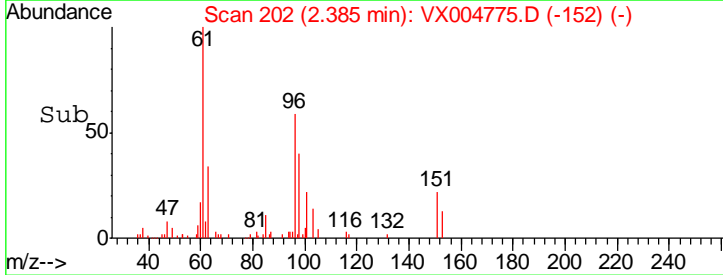
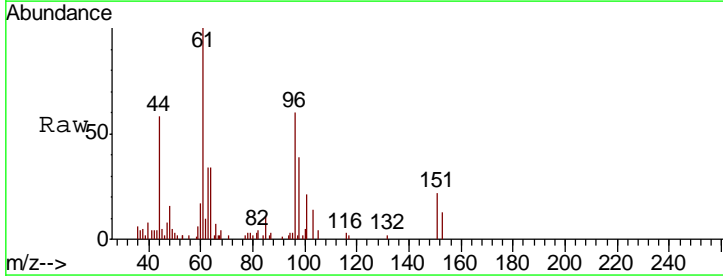
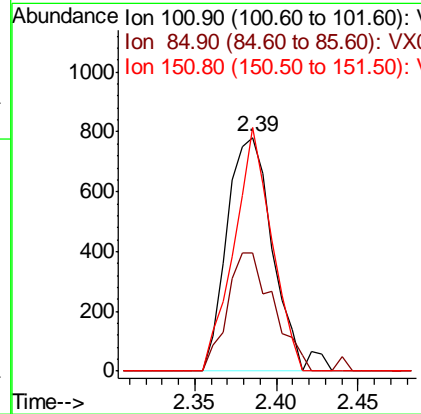
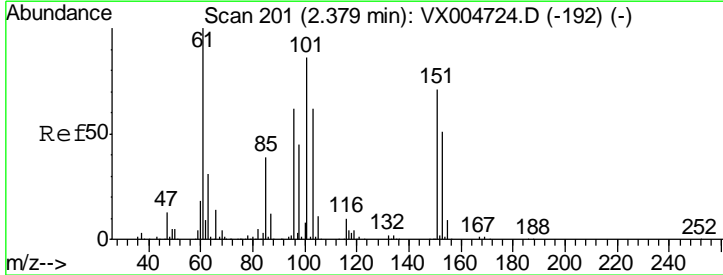
Instrument :
 MSVOA_X
ClientSampled :
 MW-123-SEP18

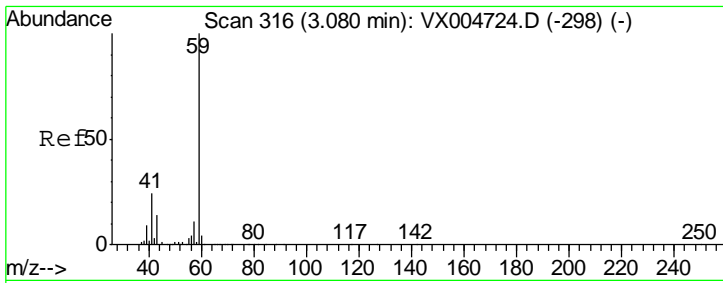
Tgt Ion	Resp	Lower	Upper
64	100		
66	4.1	24.6	36.8#



#9
 1,1,2-Trichlorotrifluoroethane
 Concen: 0.561 ug/l
 RT: 2.39 min Scan# 202
 Delta R.T. 0.01 min
 Lab File: VX004775.D
 Acq: 27 Sep 2018 15:43

Tgt Ion	Resp	Lower	Upper
101	100		
85	50.6	34.2	51.4
151	84.9	65.0	97.6

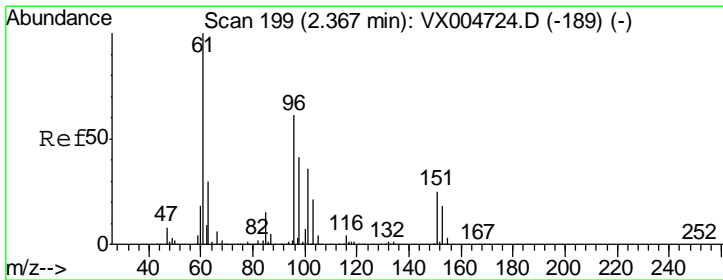
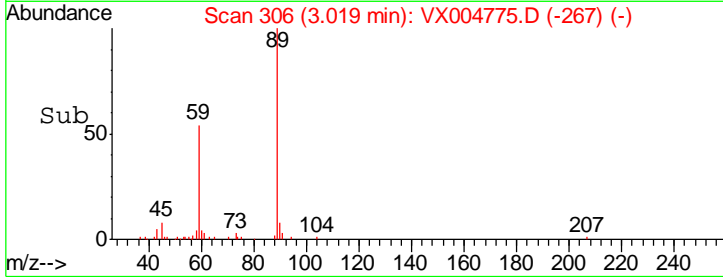
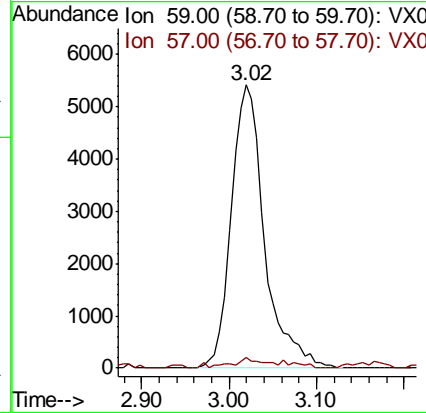
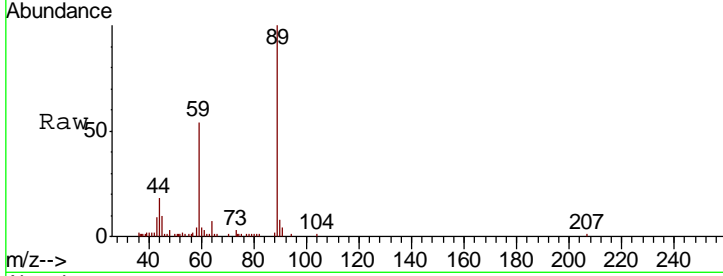




#11
 Tert butyl alcohol
 Concen: 14.271 ug/l
 RT: 3.02 min Scan# 306
 Delta R.T. -0.06 min
 Lab File: VX004775.D
 Acq: 27 Sep 2018 15:43

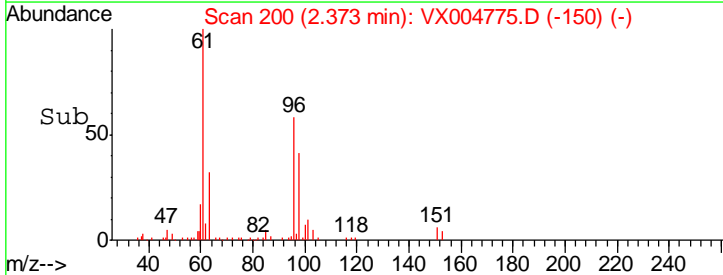
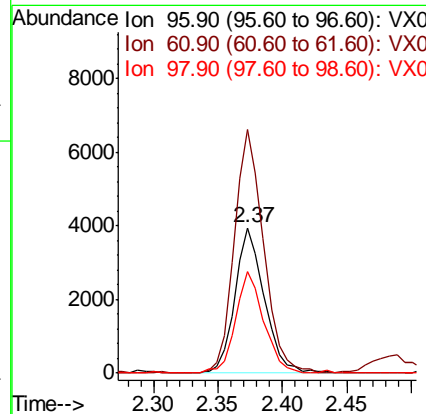
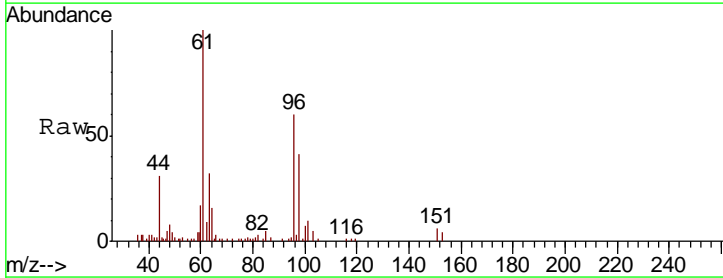
Instrument :
 MSVOA_X
ClientSampled :
 MW-123-SEP18

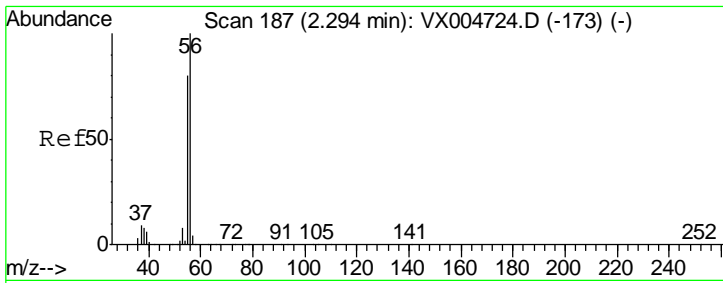
Tgt Ion	Resp	Lower	Upper
59	14318		
57	3.4	8.2	12.4#



#12
 1,1-Dichloroethene
 Concen: 2.312 ug/l
 RT: 2.37 min Scan# 200
 Delta R.T. 0.01 min
 Lab File: VX004775.D
 Acq: 27 Sep 2018 15:43

Tgt Ion	Resp	Lower	Upper
96	6292		
61	167.7	128.8	193.2
98	69.6	52.2	78.2

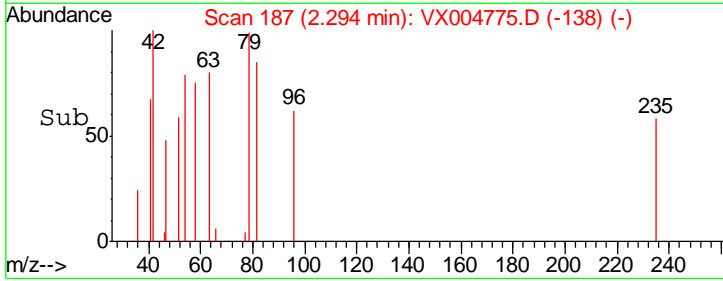
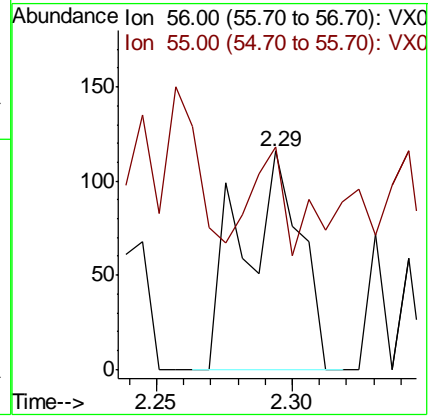
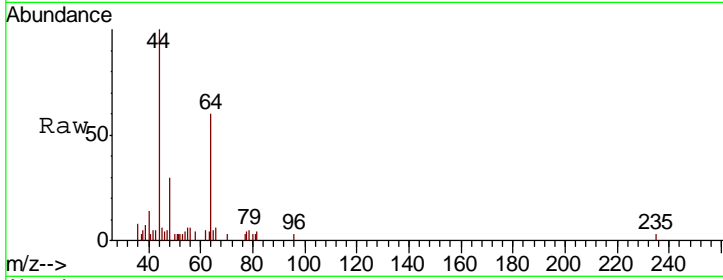




#13
 Acrolein
 Concen: 0.241 ug/l
 RT: 2.29 min Scan# 187
 Delta R.T. 0.00 min
 Lab File: VX004775.D
 Acq: 27 Sep 2018 15:43

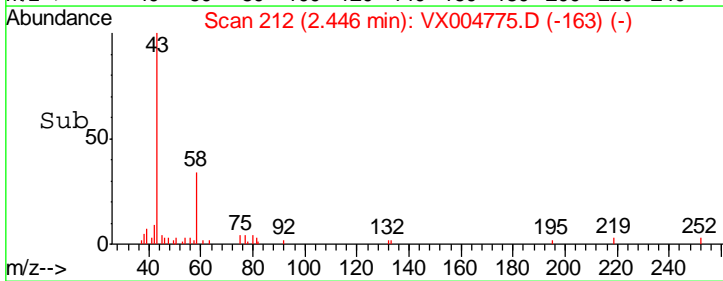
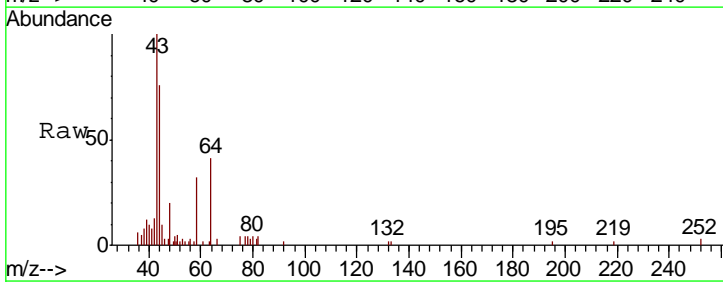
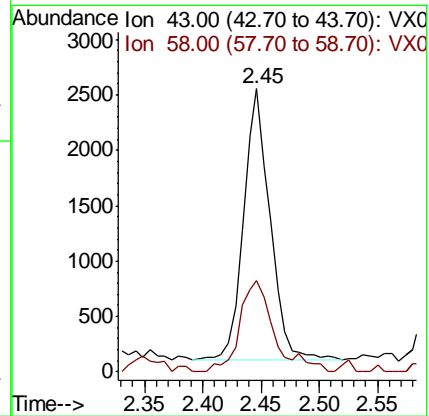
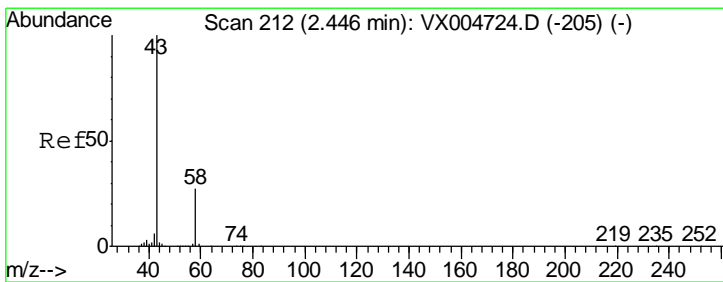
Instrument :
 MSVOA_X
ClientSampled :
 MW-123-SEP18

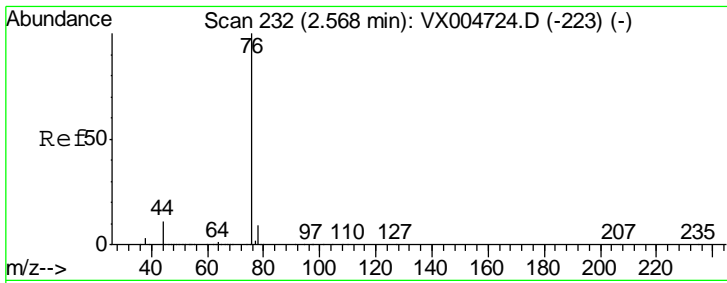
Tgt Ion: 56 Resp: 172
 Ion Ratio Lower Upper
 56 100
 55 26.7 54.7 82.1#



#16
 Acetone
 Concen: 1.864 ug/l
 RT: 2.45 min Scan# 212
 Delta R.T. 0.00 min
 Lab File: VX004775.D
 Acq: 27 Sep 2018 15:43

Tgt Ion: 43 Resp: 3905
 Ion Ratio Lower Upper
 43 100
 58 33.8 26.2 39.4

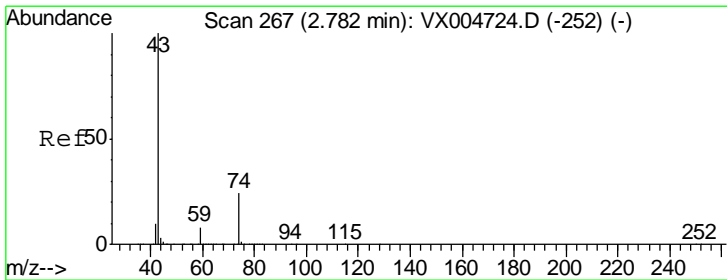
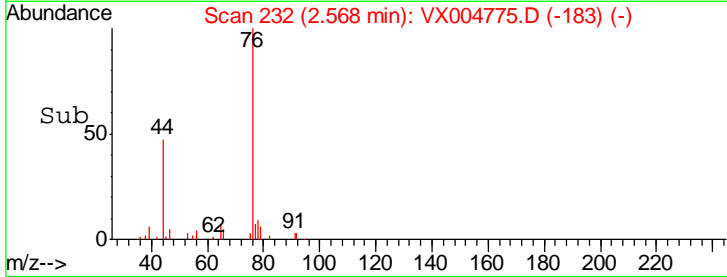
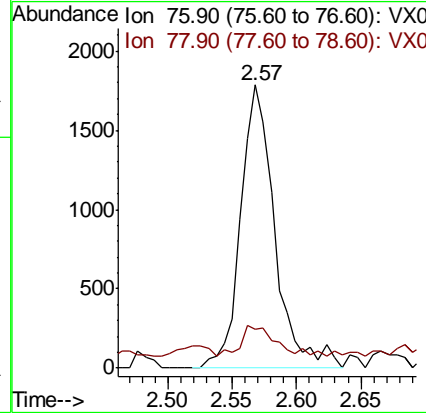
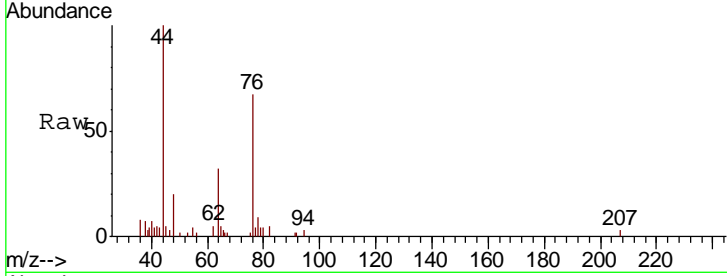




#17
 Carbon Disulfide
 Concen: 0.400 ug/l
 RT: 2.57 min Scan# 232
 Delta R.T. 0.00 min
 Lab File: VX004775.D
 Acq: 27 Sep 2018 15:43

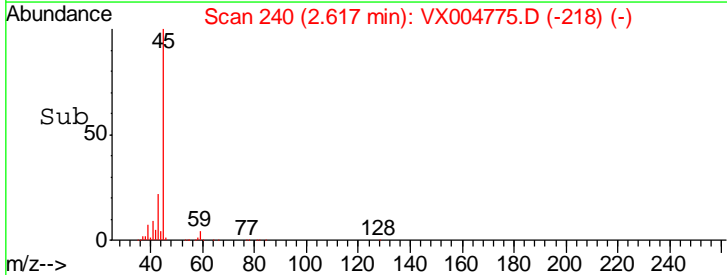
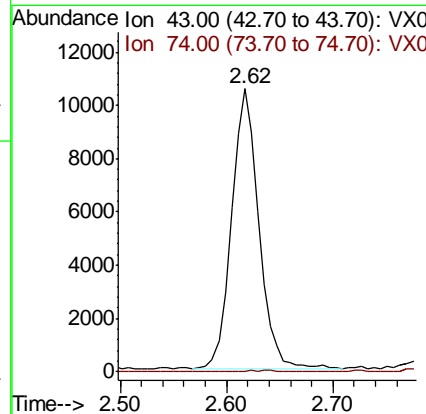
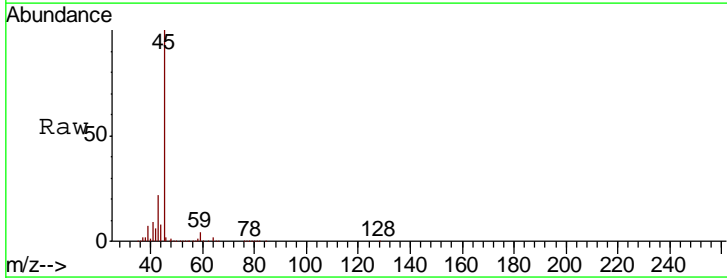
Instrument :
 MSVOA_X
 ClientSampled :
 MW-123-SEP18

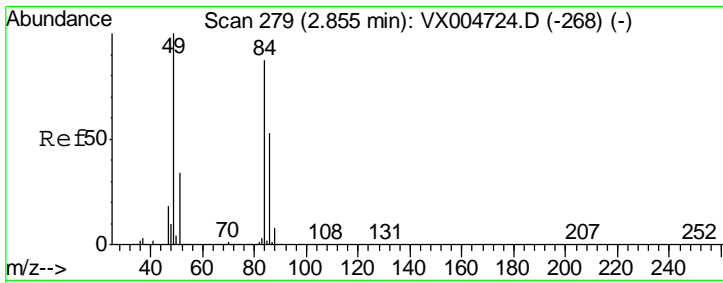
Tgt Ion: 76 Resp: 3273
 Ion Ratio Lower Upper
 76 100
 78 9.1 7.0 10.6



#18
 Methyl Acetate
 Concen: 3.568 ug/l
 RT: 2.62 min Scan# 240
 Delta R.T. -0.16 min
 Lab File: VX004775.D
 Acq: 27 Sep 2018 15:43

Tgt Ion: 43 Resp: 18938
 Ion Ratio Lower Upper
 43 100
 74 0.0 19.4 29.2#

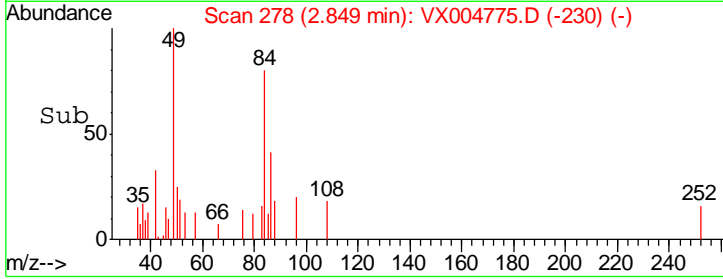
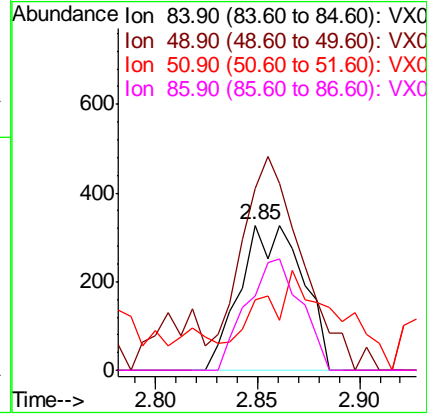
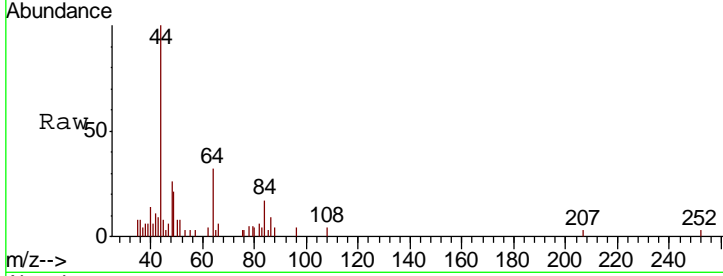




#20
 Methylene Chloride
 Concen: Below Cal
 RT: 2.85 min Scan# 278
 Delta R.T. -0.01 min
 Lab File: VX004775.D
 Acq: 27 Sep 2018 15:43

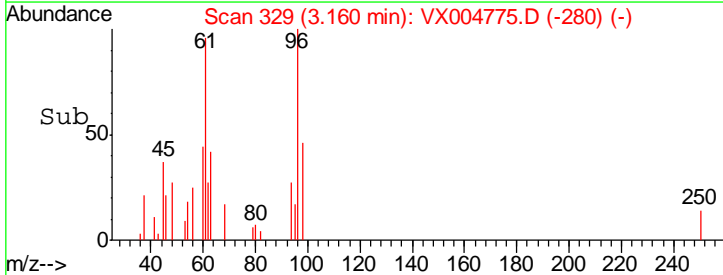
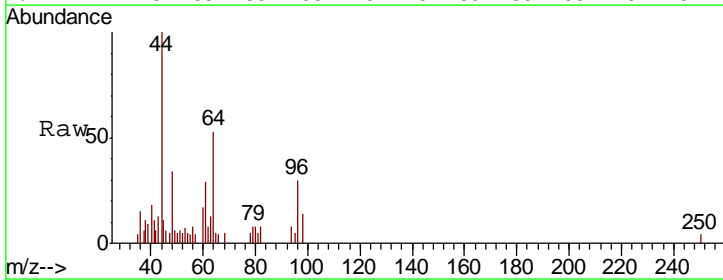
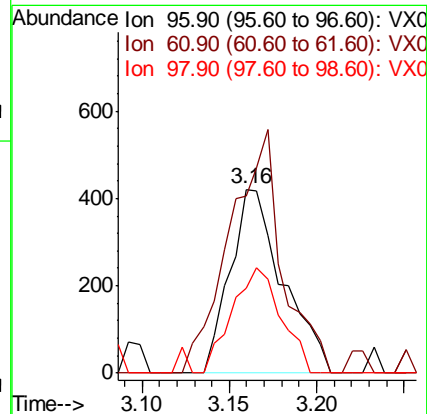
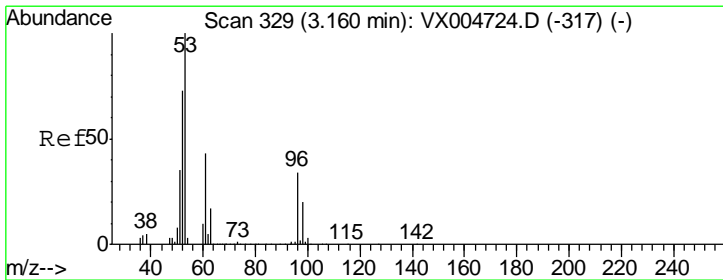
Instrument :
 MSVOA_X
 ClientSampled :
 MW-123-SEP18

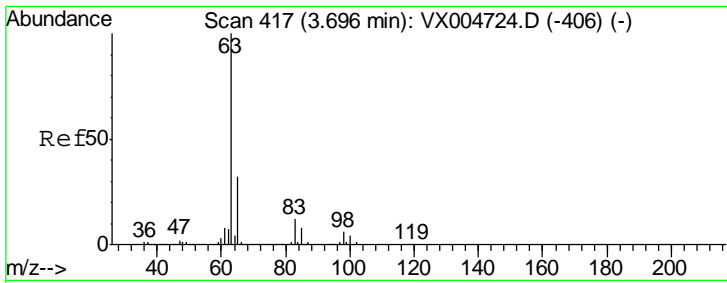
Tgt Ion	Resp	Lower	Upper
84	100		
49	99.4	101.2	151.8#
51	19.2	29.5	44.3#
86	51.2	52.3	78.5#



#21
 trans-1,2-Dichloroethene
 Concen: 0.296 ug/l
 RT: 3.16 min Scan# 329
 Delta R.T. 0.00 min
 Lab File: VX004775.D
 Acq: 27 Sep 2018 15:43

Tgt Ion	Resp	Lower	Upper
96	100		
61	96.2	113.8	170.6#
98	46.3	51.8	77.8#

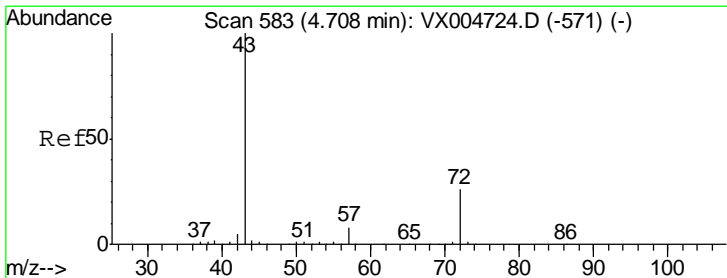
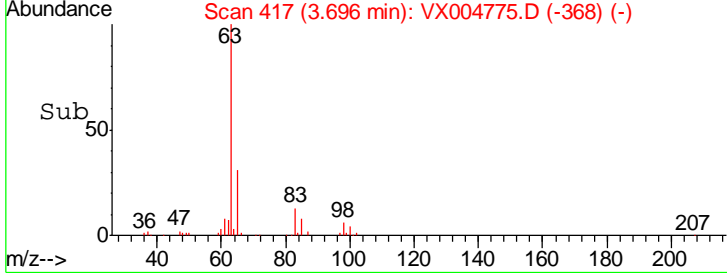
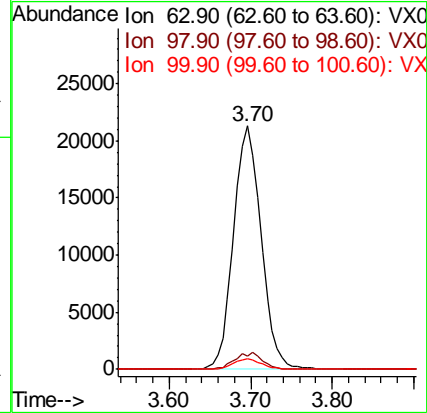
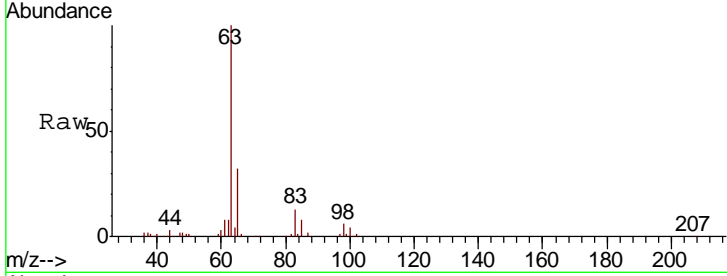




#24
 1,1-Dichloroethane
 Concen: 8.350 ug/l
 RT: 3.70 min Scan# 417
 Delta R.T. 0.00 min
 Lab File: VX004775.D
 Acq: 27 Sep 2018 15:43

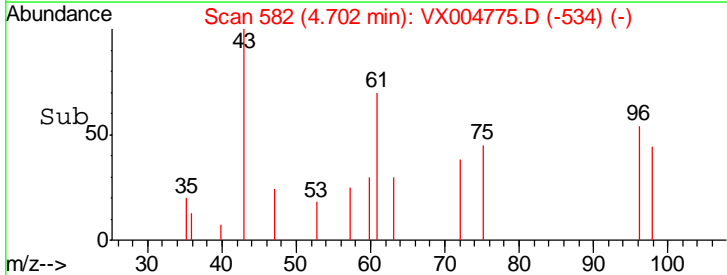
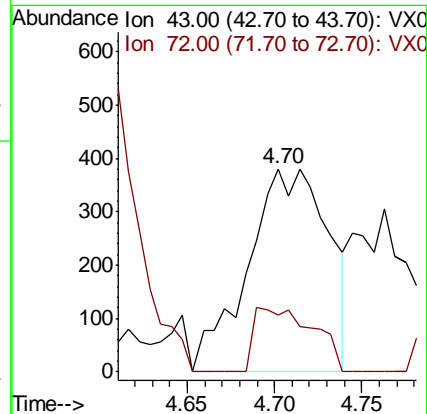
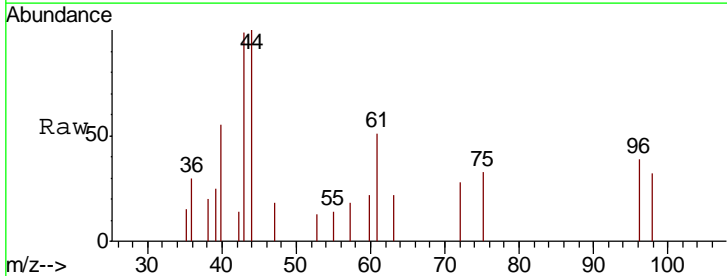
Instrument :
 MSVOA_X
 ClientSampled :
 MW-123-SEP18

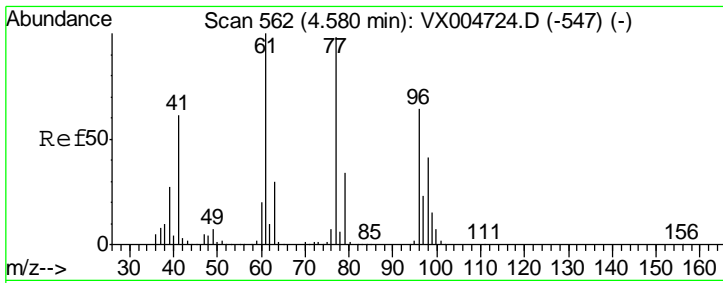
Tgt Ion	Resp	Lower	Upper
63	49808		
98	5.7	3.5	10.4
100	4.4	2.4	7.1



#25
 2-Butanone
 Concen: 0.396 ug/l
 RT: 4.70 min Scan# 582
 Delta R.T. -0.01 min
 Lab File: VX004775.D
 Acq: 27 Sep 2018 15:43

Tgt Ion	Resp	Lower	Upper
43	1224		
72	27.8	22.0	33.0

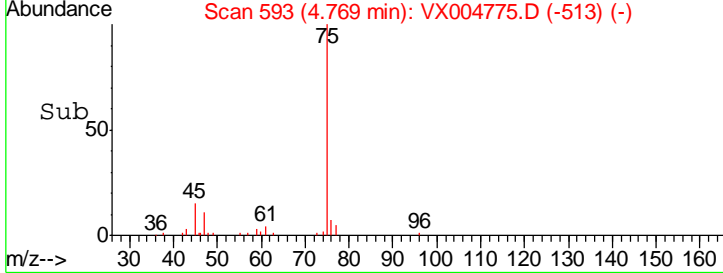
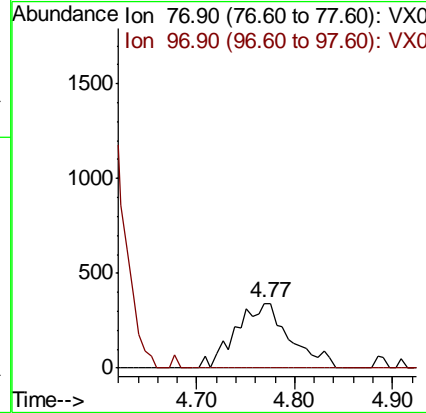
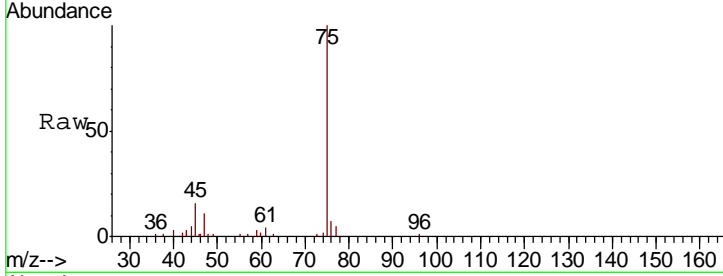




#26
 2,2-Dichloropropane
 Concen: 0.316 ug/l
 RT: 4.77 min Scan# 593
 Delta R.T. 0.19 min
 Lab File: VX004775.D
 Acq: 27 Sep 2018 15:43

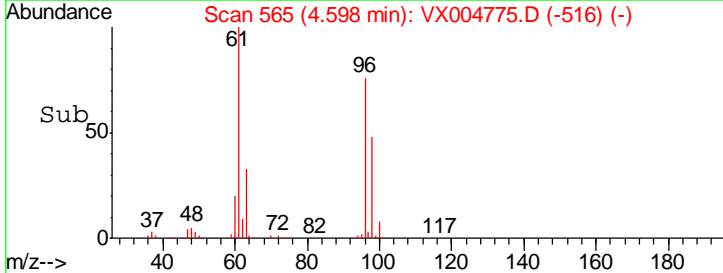
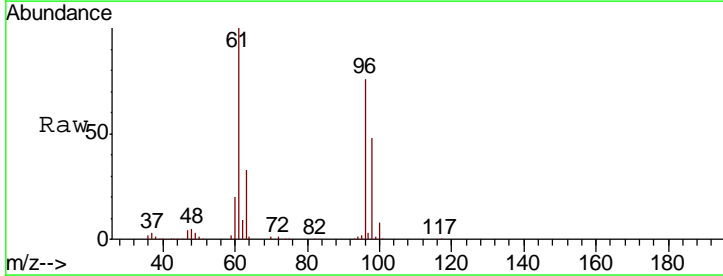
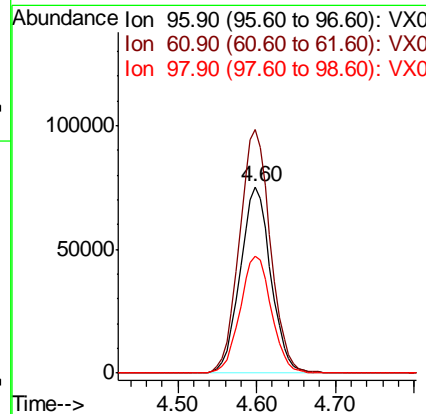
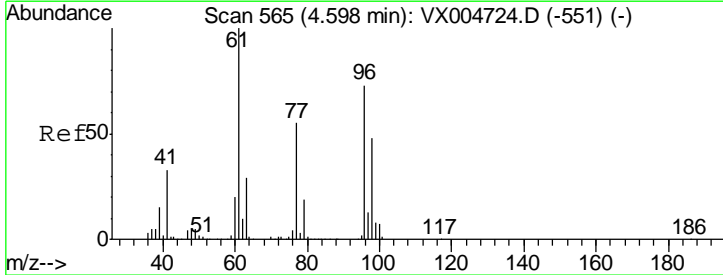
Instrument :
 MSVOA_X
ClientSampled :
 MW-123-SEP18

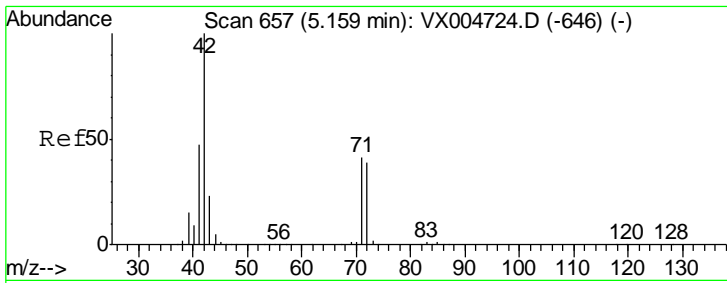
Tgt Ion	Resp	Lower	Upper
77	1312		
77	100		
97	0.0	11.7	35.0#



#27
 cis-1,2-Dichloroethene
 Concen: 61.060 ug/l
 RT: 4.60 min Scan# 565
 Delta R.T. 0.00 min
 Lab File: VX004775.D
 Acq: 27 Sep 2018 15:43

Tgt Ion	Resp	Lower	Upper
96	203235		
96	100		
61	132.3	0.0	282.6
98	64.3	0.0	130.2

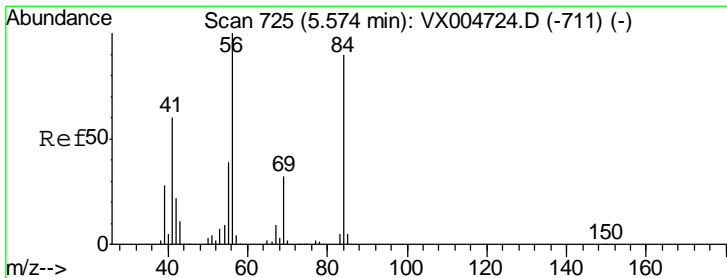
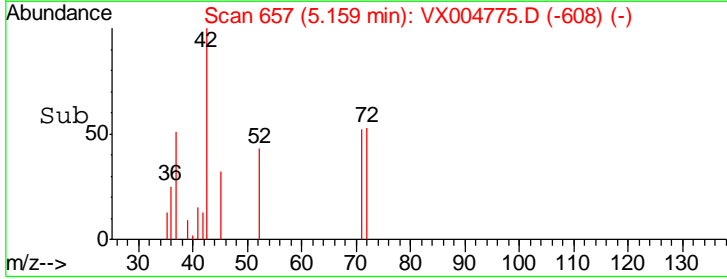
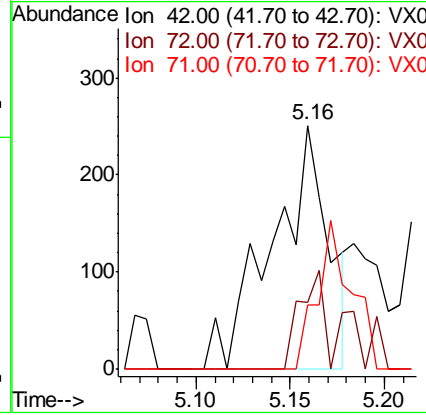
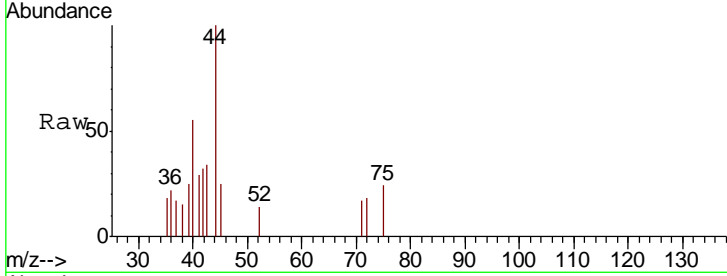




#29
 Tetrahydrofuran
 Concen: 0.272 ug/l
 RT: 5.16 min Scan# 657
 Delta R.T. 0.00 min
 Lab File: VX004775.D
 Acq: 27 Sep 2018 15:43

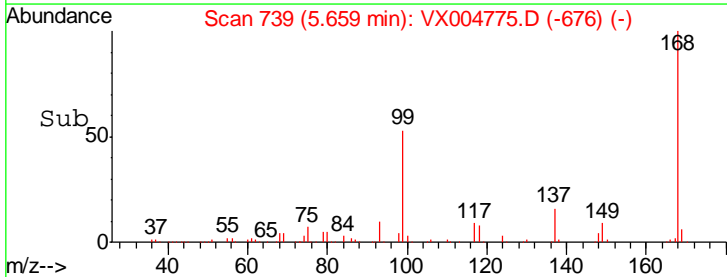
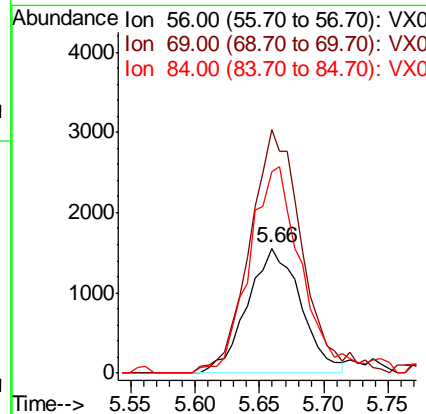
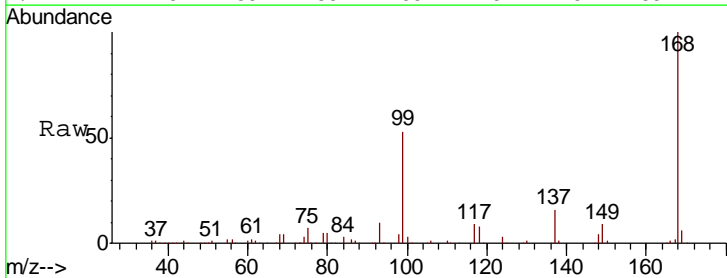
Instrument :
 MSVOA_X
 ClientSampled :
 MW-123-SEP18

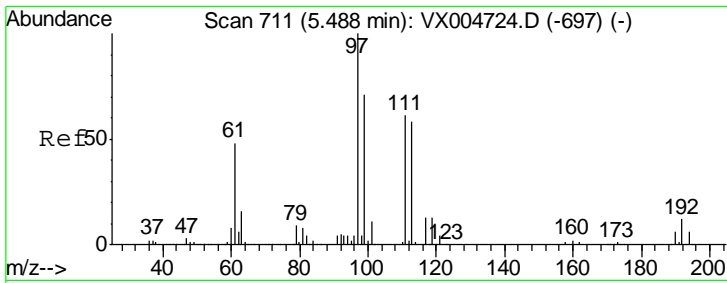
Tgt Ion	Resp	Lower	Upper
42	100		
72	16.9	37.4	56.0#
71	36.6	34.5	51.7



#31
 Cyclohexane
 Concen: 0.980 ug/l
 RT: 5.66 min Scan# 739
 Delta R.T. 0.09 min
 Lab File: VX004775.D
 Acq: 27 Sep 2018 15:43

Tgt Ion	Resp	Lower	Upper
56	100		
69	195.1	25.4	38.2#
84	160.9	71.4	107.2#

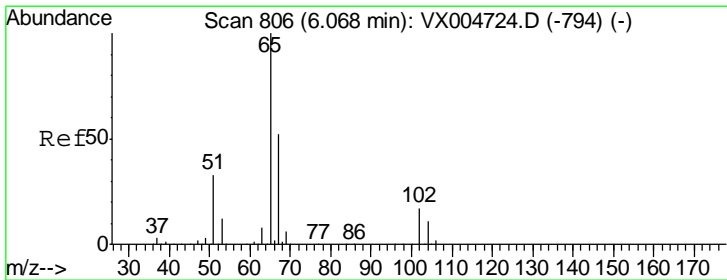
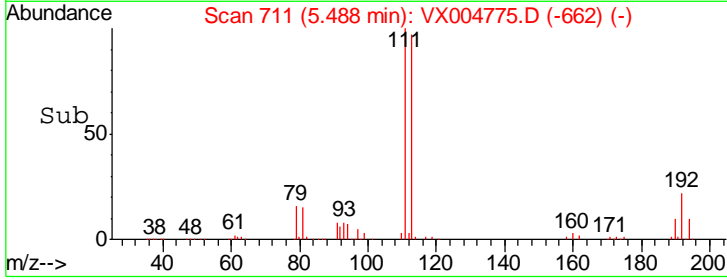
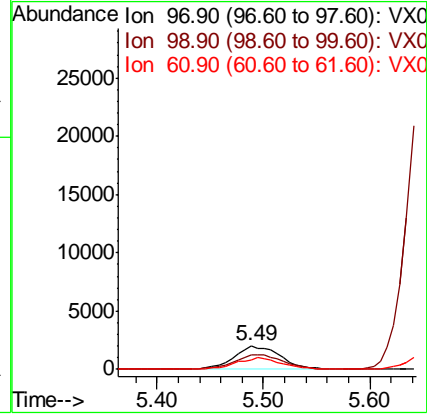
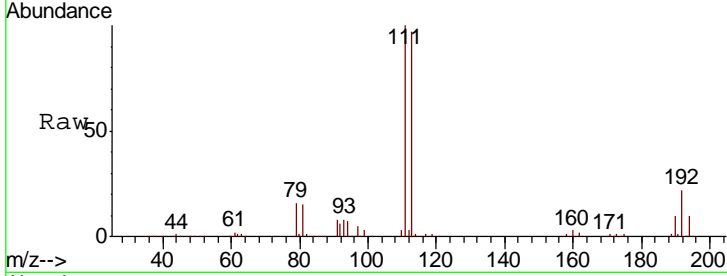




#32
 1,1,1-Trichloroethane
 Concen: 1.299 ug/l
 RT: 5.49 min Scan# 711
 Delta R.T. 0.00 min
 Lab File: VX004775.D
 Acq: 27 Sep 2018 15:43

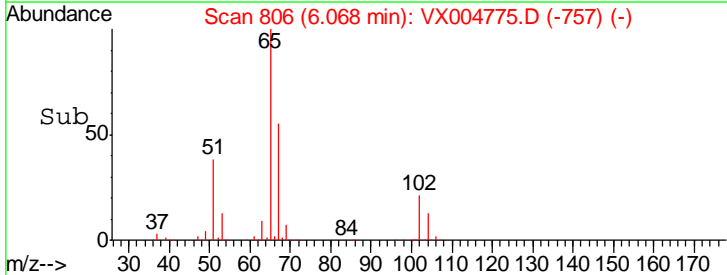
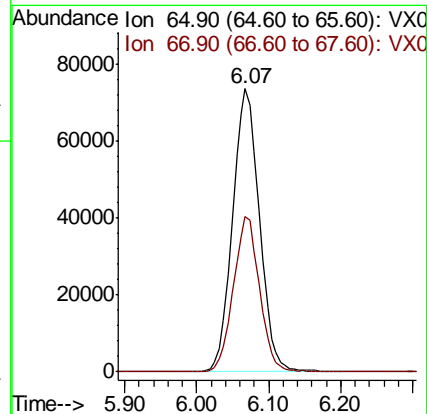
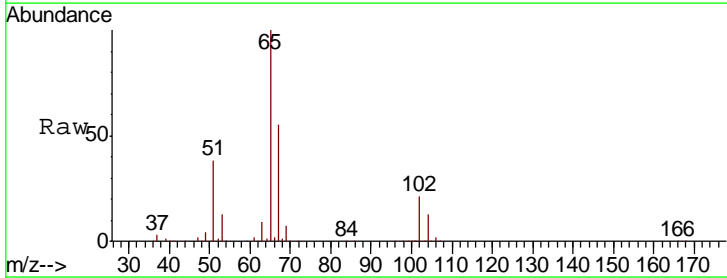
Instrument :
 MSVOA_X
 ClientSampled :
 MW-123-SEP18

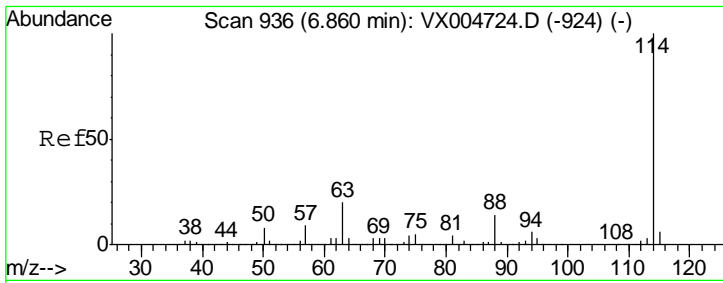
Tgt Ion	Resp	Lower	Upper
97	100		
99	66.3	52.0	78.0
61	49.1	34.9	52.3



#33
 1,2-Dichloroethane-d4
 Concen: 53.101 ug/l
 RT: 6.07 min Scan# 806
 Delta R.T. 0.00 min
 Lab File: VX004775.D
 Acq: 27 Sep 2018 15:43

Tgt Ion	Resp	Lower	Upper
65	100		
67	53.7	0.0	106.8

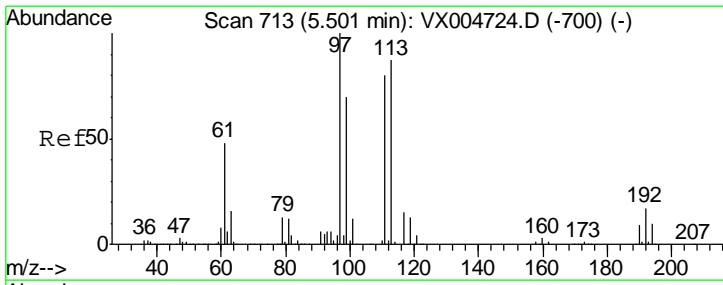
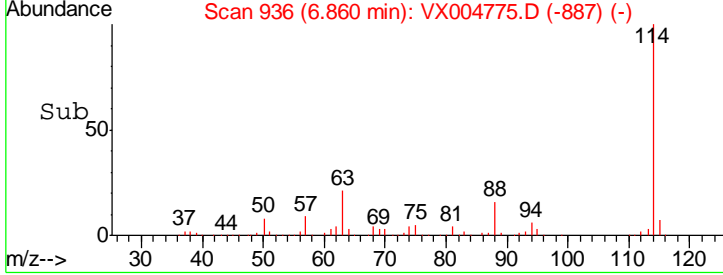
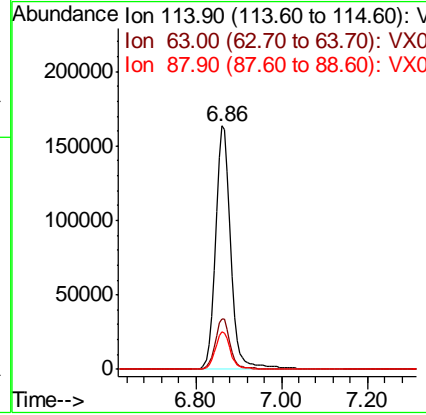
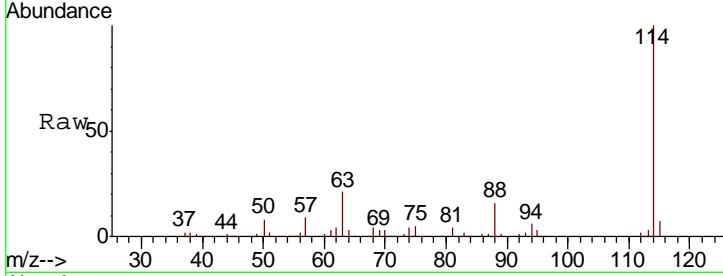




#34
 1,4-Difluorobenzene
 Concen: 50.000 ug/l
 RT: 6.86 min Scan# 936
 Delta R.T. 0.00 min
 Lab File: VX004775.D
 Acq: 27 Sep 2018 15:43

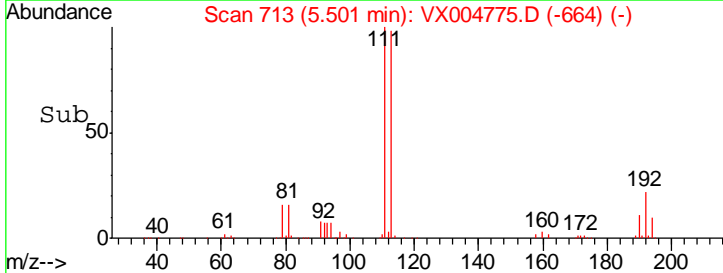
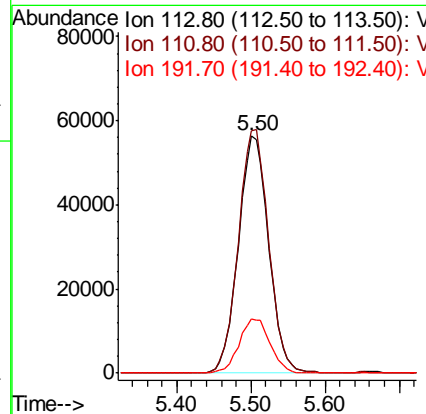
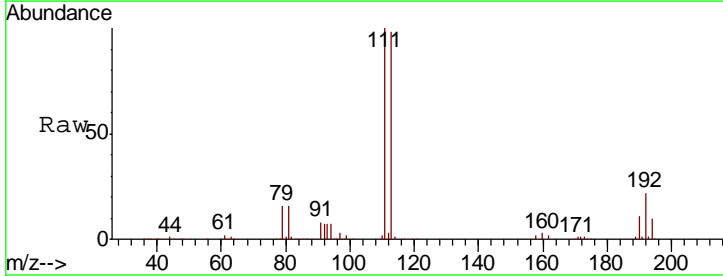
Instrument :
 MSVOA_X
 ClientSampled :
 MW-123-SEP18

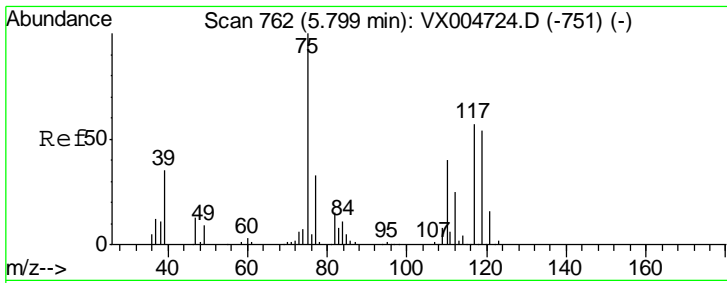
Tgt Ion	Resp	Lower	Upper
114	409085		
63	20.9	0.0	39.0
88	15.5	0.0	30.4



#35
 Dibromofluoromethane
 Concen: 46.396 ug/l
 RT: 5.50 min Scan# 713
 Delta R.T. 0.00 min
 Lab File: VX004775.D
 Acq: 27 Sep 2018 15:43

Tgt Ion	Resp	Lower	Upper
113	160856		
111	102.7	82.4	123.6
192	23.4	19.4	29.2

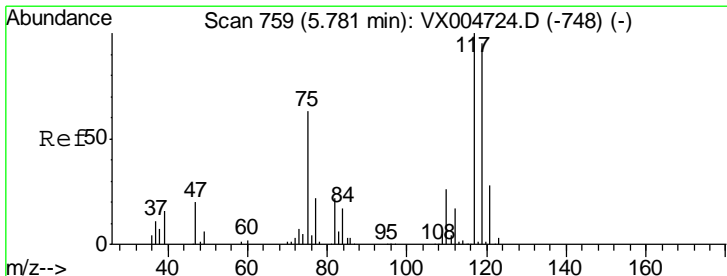
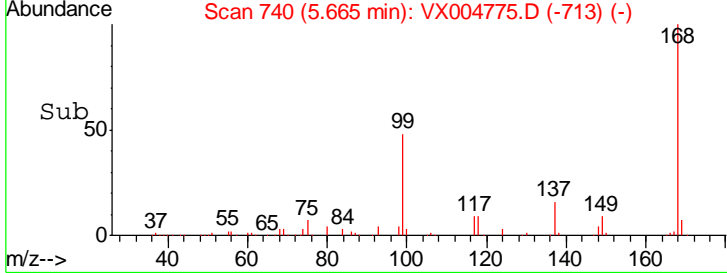
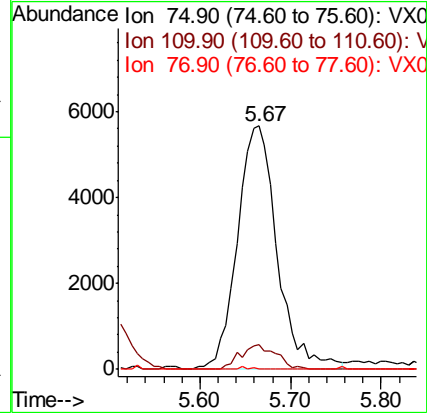
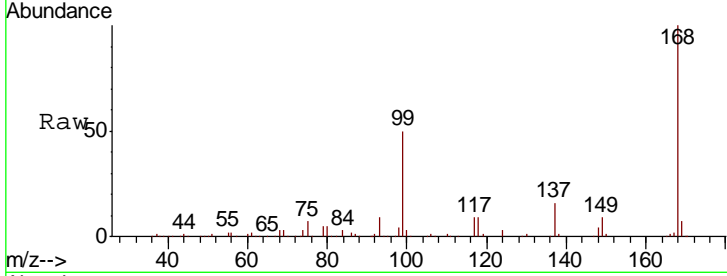




#36
 1,1-Dichloropropene
 Concen: 3.642 ug/l
 RT: 5.67 min Scan# 740
 Delta R.T. -0.13 min
 Lab File: VX004775.D
 Acq: 27 Sep 2018 15:43

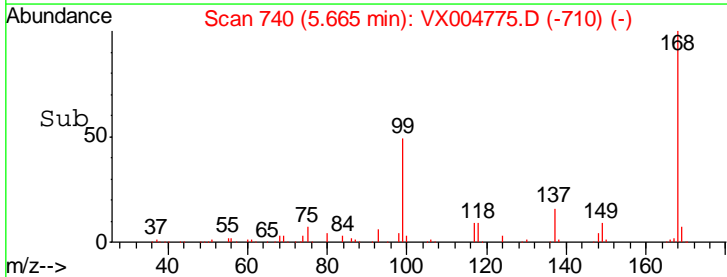
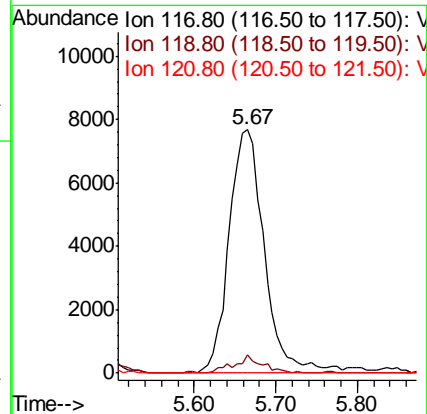
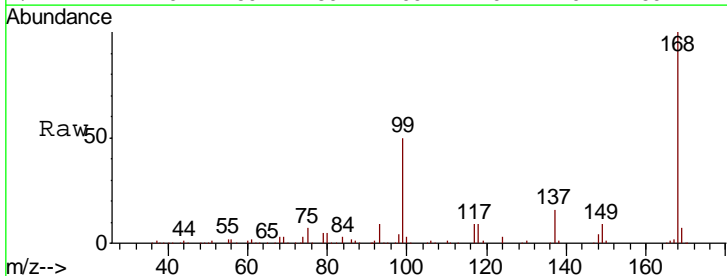
Instrument :
 MSVOA_X
 ClientSampled :
 MW-123-SEP18

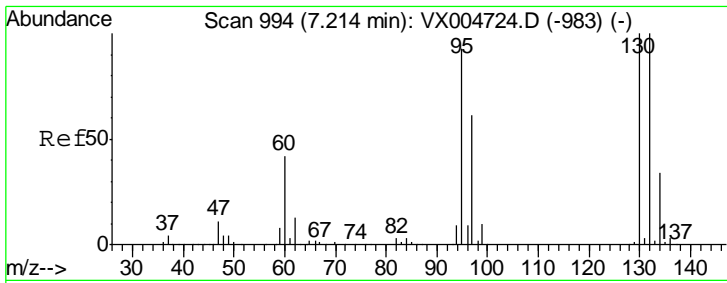
Tgt Ion	Resp	Lower	Upper
75	17229		
110	9.3	18.0	54.0#
77	0.3	24.6	36.8#



#38
 Carbon Tetrachloride
 Concen: 4.623 ug/l
 RT: 5.67 min Scan# 740
 Delta R.T. -0.12 min
 Lab File: VX004775.D
 Acq: 27 Sep 2018 15:43

Tgt Ion	Resp	Lower	Upper
117	22987		
119	7.6	78.8	118.2#
121	0.0	24.9	37.3#

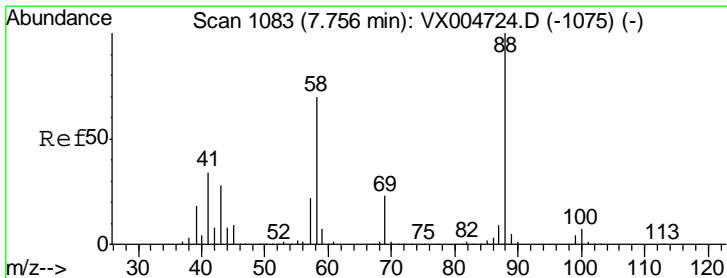
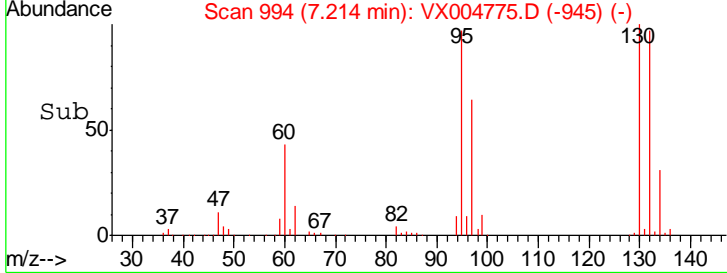
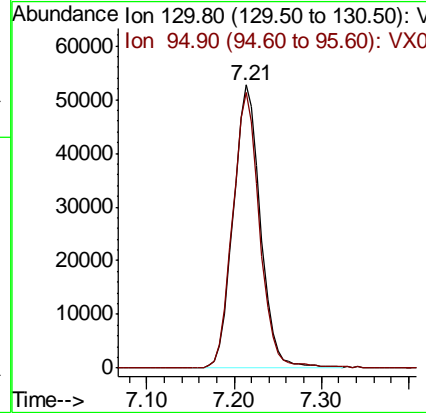
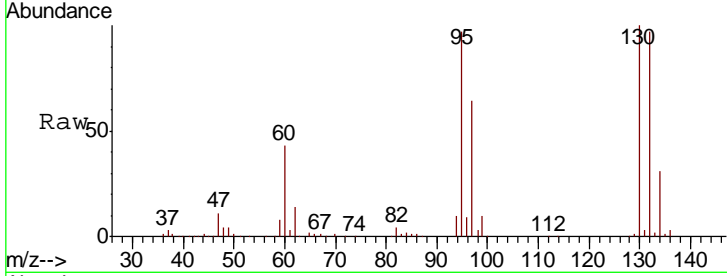




#44
 Trichloroethene
 Concen: 31.279 ug/l
 RT: 7.21 min Scan# 994
 Delta R.T. 0.00 min
 Lab File: VX004775.D
 Acq: 27 Sep 2018 15:43

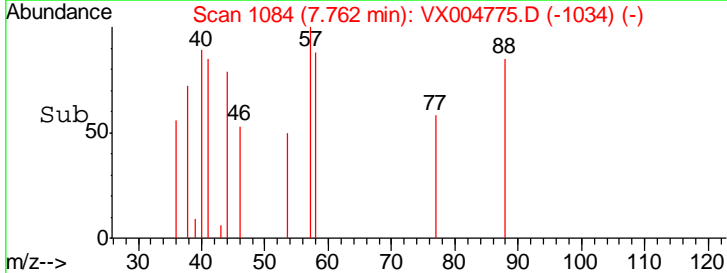
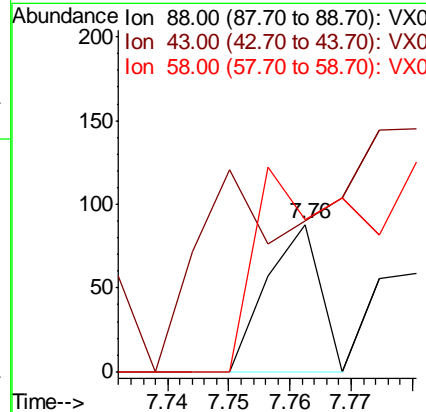
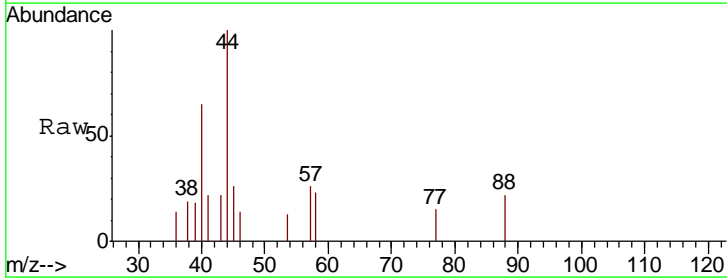
Instrument :
 MSVOA_X
 ClientSampled :
 MW-123-SEP18

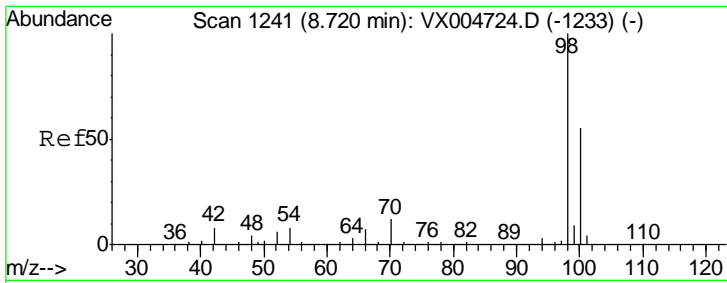
Tgt Ion: 130 Resp: 113872
 Ion Ratio Lower Upper
 130 100
 95 97.4 0.0 181.6



#49
 1,4-Dioxane
 Concen: 0.519 ug/l
 RT: 7.76 min Scan# 1084
 Delta R.T. 0.01 min
 Lab File: VX004775.D
 Acq: 27 Sep 2018 15:43

Tgt Ion: 88 Resp: 53
 Ion Ratio Lower Upper
 88 100
 43 184.9 24.7 37.1#
 58 275.5 55.3 82.9#

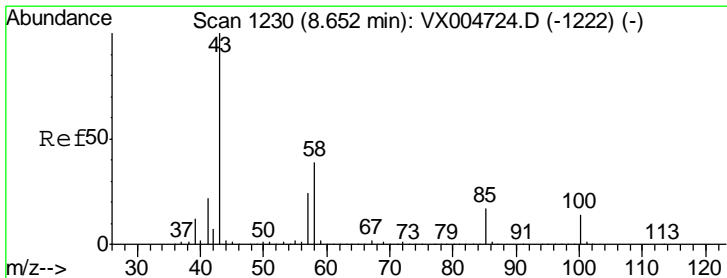
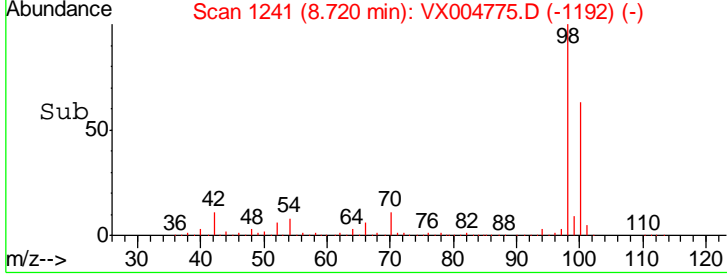
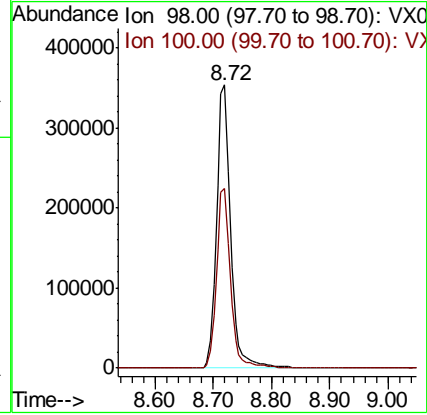
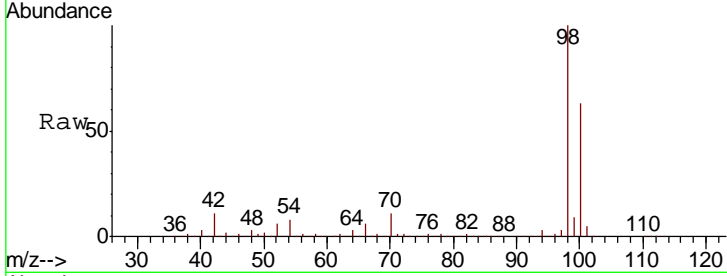




#50
 Toluene-d8
 Concen: 51.319 ug/l
 RT: 8.72 min Scan# 1241
 Delta R.T. 0.00 min
 Lab File: VX004775.D
 Acq: 27 Sep 2018 15:43

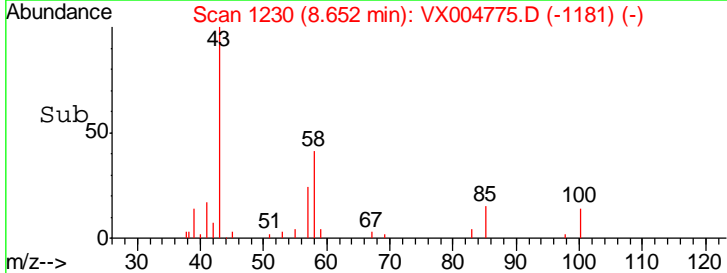
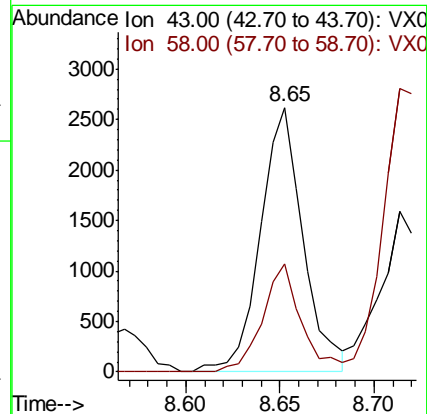
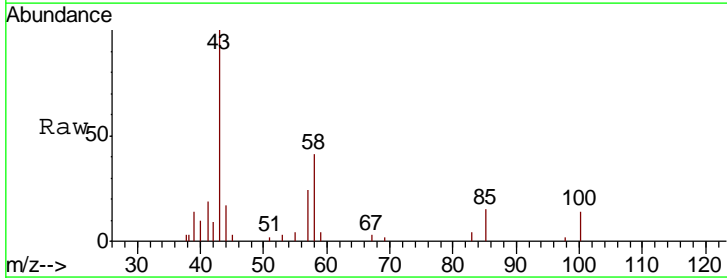
Instrument :
 MSVOA_X
ClientSampled :
 MW-123-SEP18

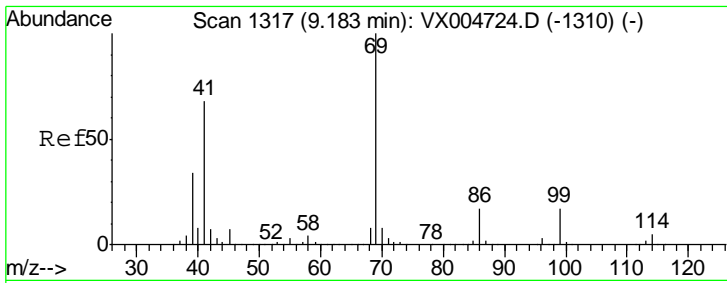
Tgt Ion	Resp	Lower	Upper
98	591512		
100	63.3	52.9	79.3



#51
 4-Methyl-2-Pentanone
 Concen: 0.721 ug/l
 RT: 8.65 min Scan# 1230
 Delta R.T. 0.00 min
 Lab File: VX004775.D
 Acq: 27 Sep 2018 15:43

Tgt Ion	Resp	Lower	Upper
43	4116		
58	37.0	33.1	49.7

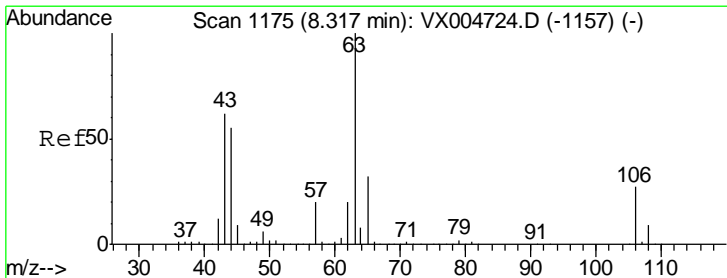
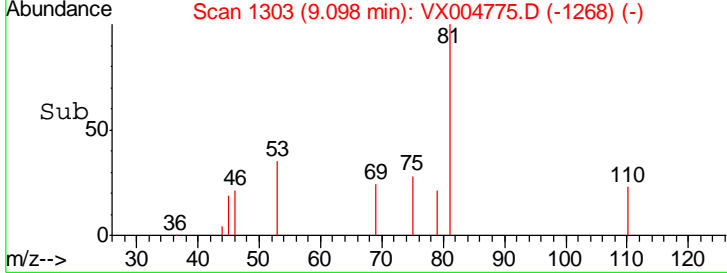
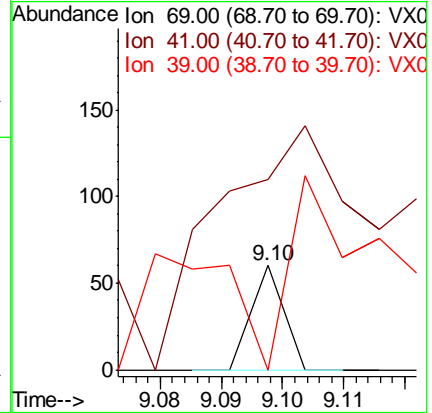
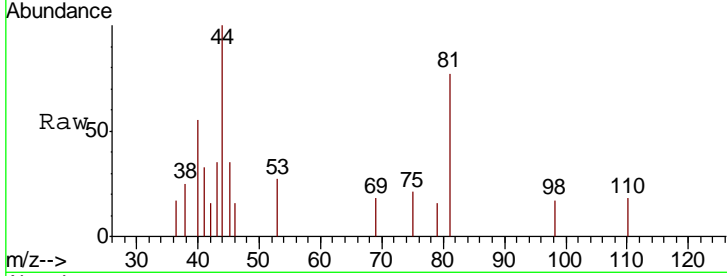




#56
Ethyl methacrylate
Concen: 2.866 ug/l
RT: 9.10 min Scan# 1303
Delta R.T. -0.08 min
Lab File: VX004775.D
Acq: 27 Sep 2018 15:43

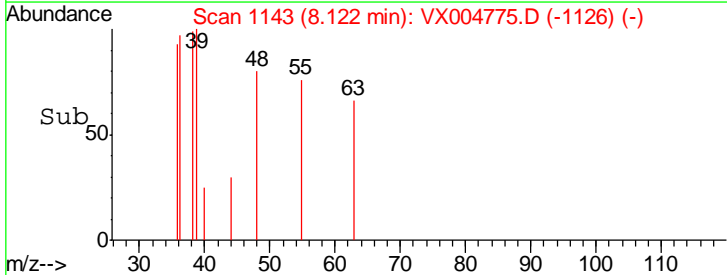
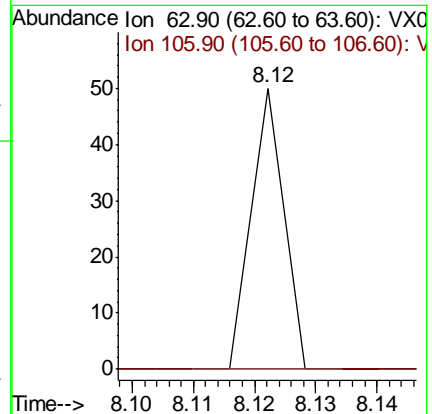
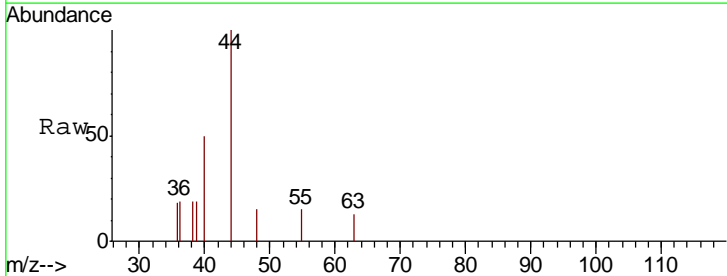
Instrument :
MSVOA_X
ClientSampled :
MW-123-SEP18

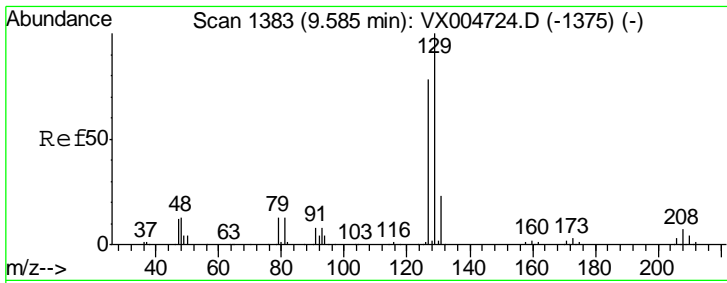
Tgt Ion	Resp	Lower	Upper
69	100		
41	1290.9	51.0	76.4#
39	718.2	26.1	39.1#



#58
2-Chloroethyl Vinyl ether
Concen: 14.248 ug/l
RT: 8.12 min Scan# 1143
Delta R.T. -0.19 min
Lab File: VX004775.D
Acq: 27 Sep 2018 15:43

Tgt Ion	Resp	Lower	Upper
63	100		
106	0.0	23.9	35.9#

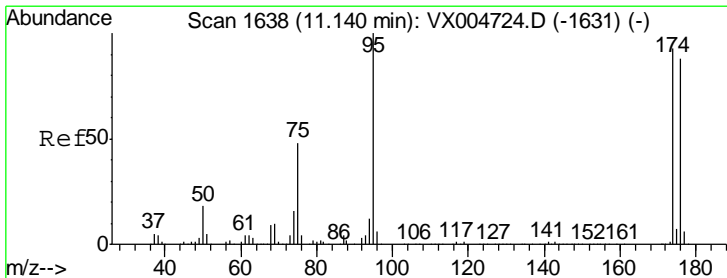
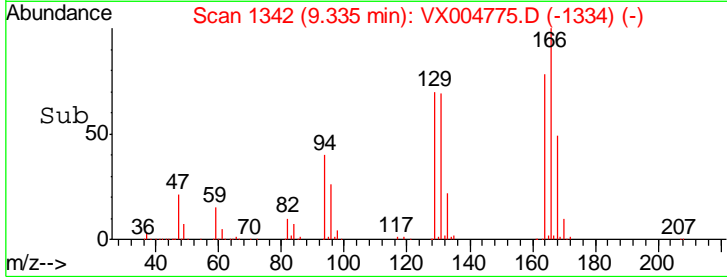
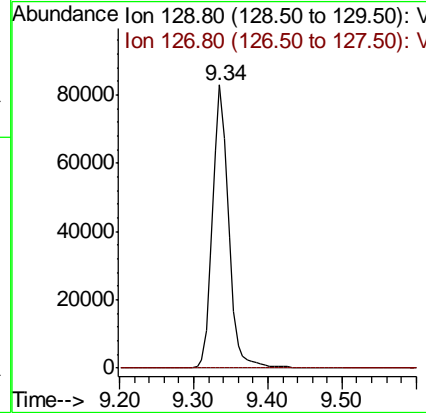
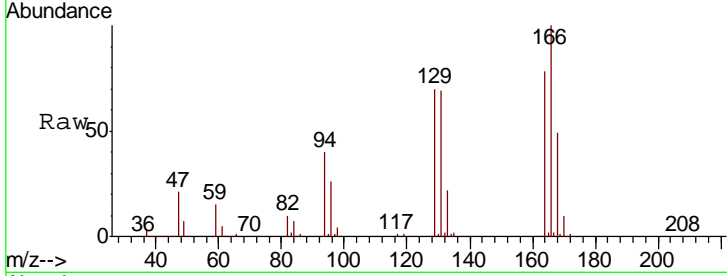




#60
 Dibromochloromethane
 Concen: 34.628 ug/l
 RT: 9.34 min Scan# 1342
 Delta R.T. -0.25 min
 Lab File: VX004775.D
 Acq: 27 Sep 2018 15:43

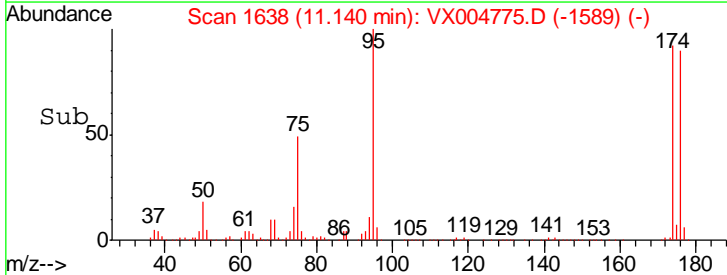
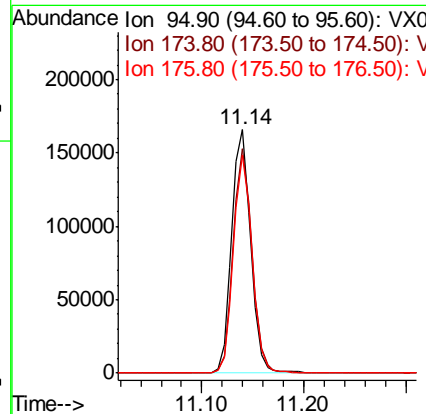
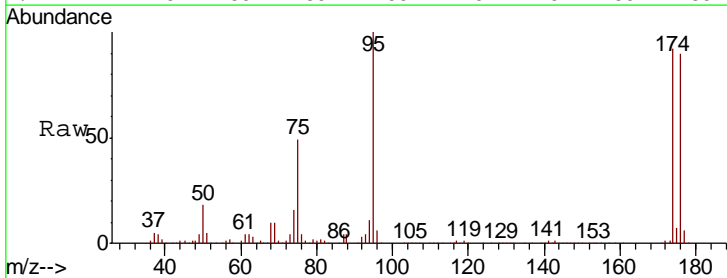
Instrument :
 MSVOA_X
 ClientSampleId :
 MW-123-SEP18

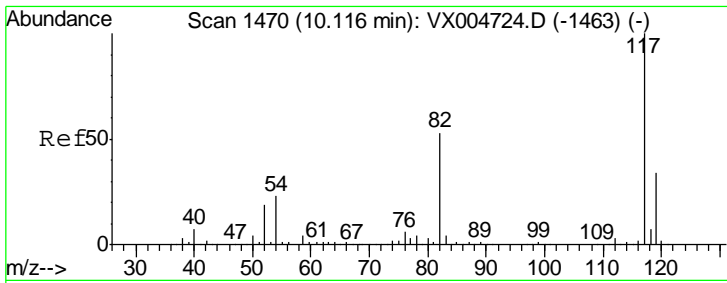
Tgt Ion: 129 Resp: 123440
 Ion Ratio Lower Upper
 129 100
 127 0.1 38.5 115.5#



#62
 4-Bromofluorobenzene
 Concen: 51.394 ug/l
 RT: 11.14 min Scan# 1638
 Delta R.T. 0.00 min
 Lab File: VX004775.D
 Acq: 27 Sep 2018 15:43

Tgt Ion: 95 Resp: 213405
 Ion Ratio Lower Upper
 95 100
 174 91.4 0.0 185.2
 176 88.2 0.0 178.6

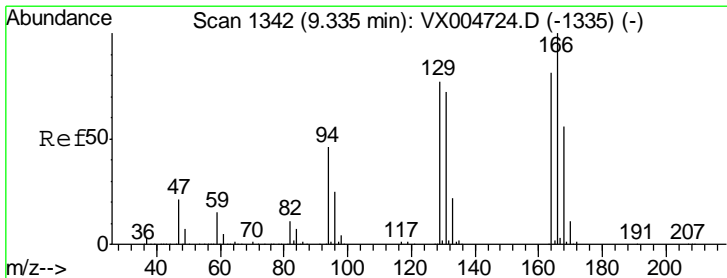
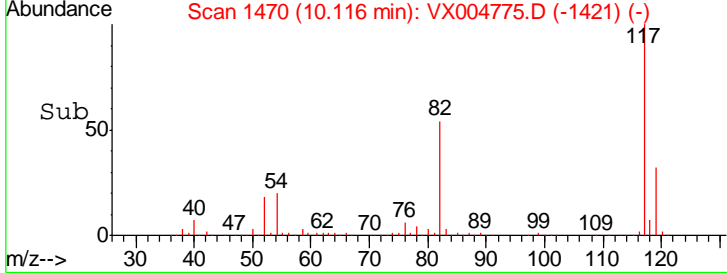
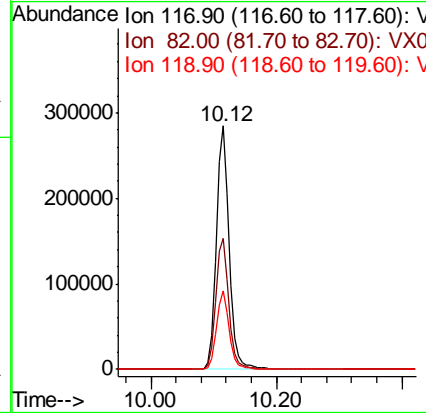
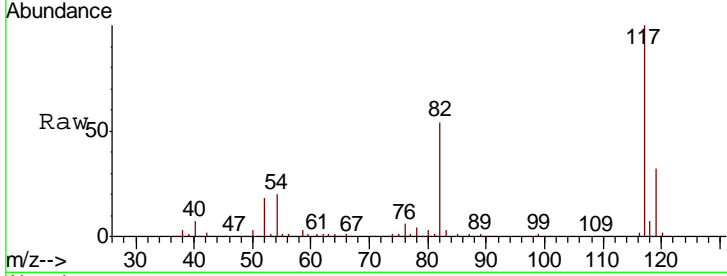




#63
 Chlorobenzene-d5
 Concen: 50.000 ug/l
 RT: 10.12 min Scan# 1470
 Delta R.T. 0.00 min
 Lab File: VX004775.D
 Acq: 27 Sep 2018 15:43

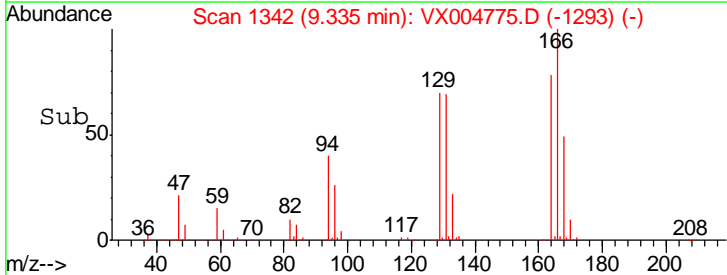
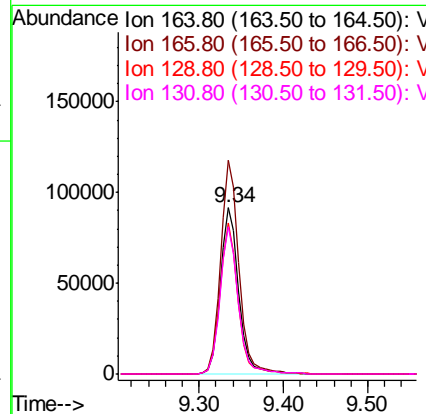
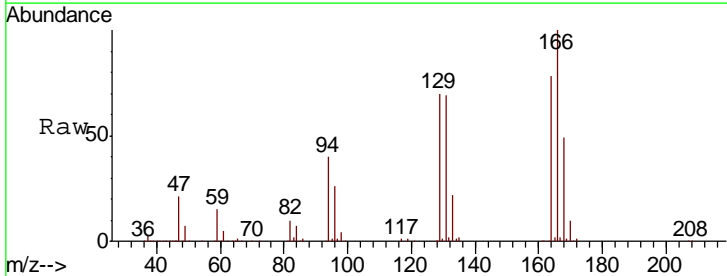
Instrument :
 MSVOA_X
 ClientSampled :
 MW-123-SEP18

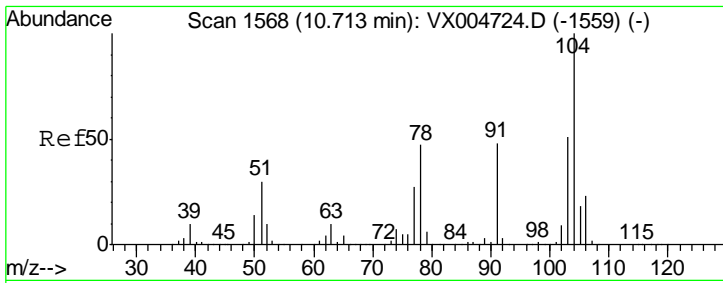
Tgt Ion	Resp	Lower	Upper
117	397981		
82	53.6	47.8	71.6
119	32.1	29.3	43.9



#64
 Tetrachloroethene
 Concen: 35.381 ug/l
 RT: 9.34 min Scan# 1342
 Delta R.T. 0.00 min
 Lab File: VX004775.D
 Acq: 27 Sep 2018 15:43

Tgt Ion	Resp	Lower	Upper
164	138587		
166	128.6	102.8	154.2
129	90.6	69.4	104.0
131	88.4	67.9	101.9

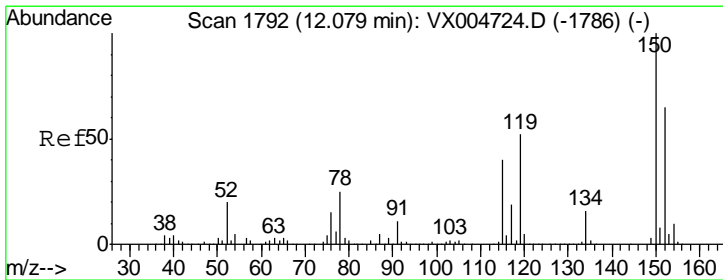
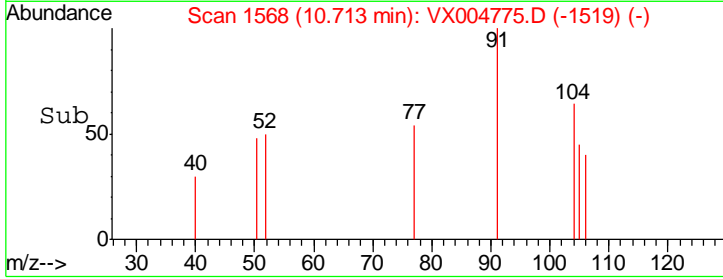
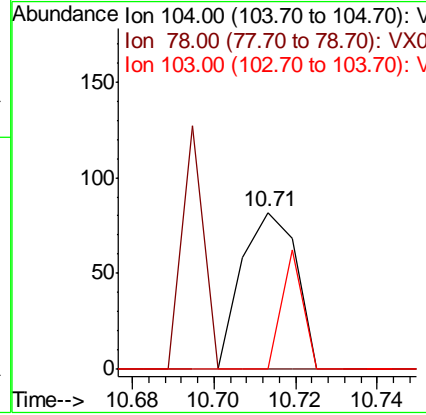
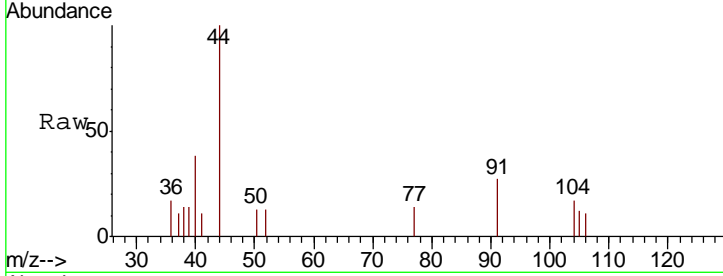




#70
 Styrene
 Concen: 2.147 ug/l
 RT: 10.71 min Scan# 1568
 Delta R.T. 0.00 min
 Lab File: VX004775.D
 Acq: 27 Sep 2018 15:43

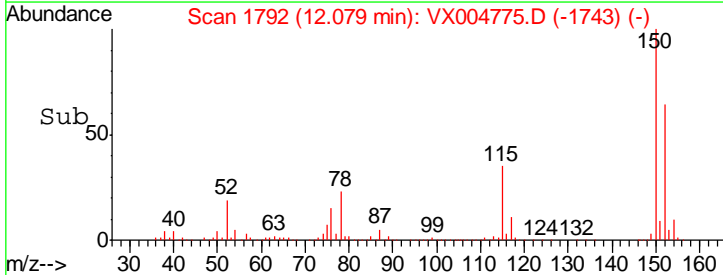
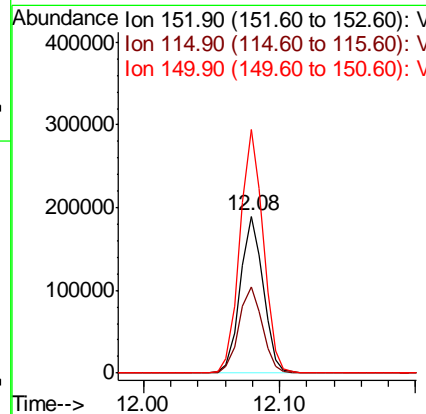
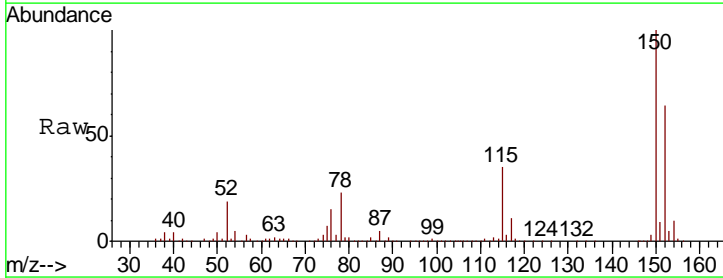
Instrument :
 MSVOA_X
 ClientSampled :
 MW-123-SEP18

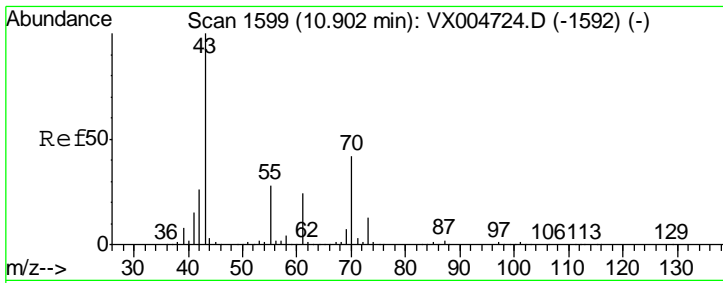
Tgt Ion	Resp	Lower	Upper
104	100		
78	0.0	37.4	56.0#
103	30.3	43.8	65.6#



#72
 1,4-Dichlorobenzene-d4
 Concen: 50.000 ug/l
 RT: 12.08 min Scan# 1792
 Delta R.T. 0.00 min
 Lab File: VX004775.D
 Acq: 27 Sep 2018 15:43

Tgt Ion	Resp	Lower	Upper
152	100		
115	56.1	39.0	117.0
150	157.7	0.0	351.0

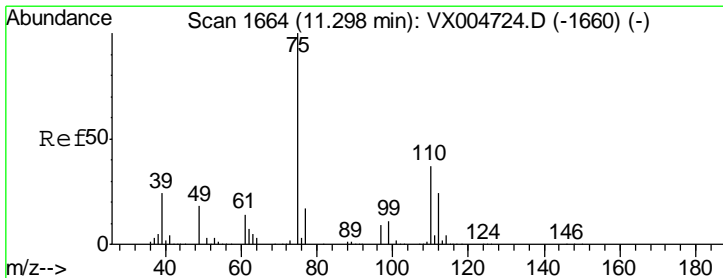
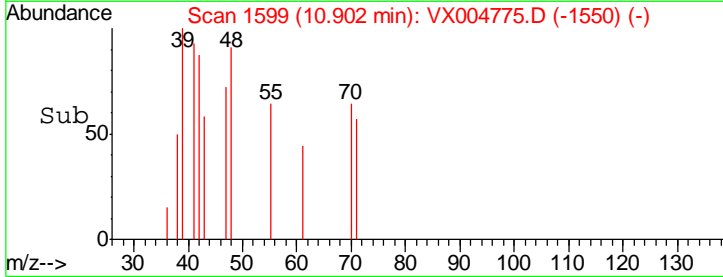
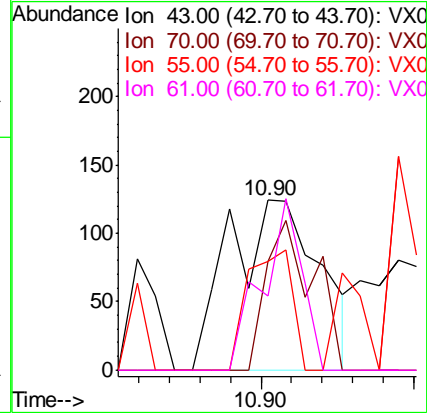
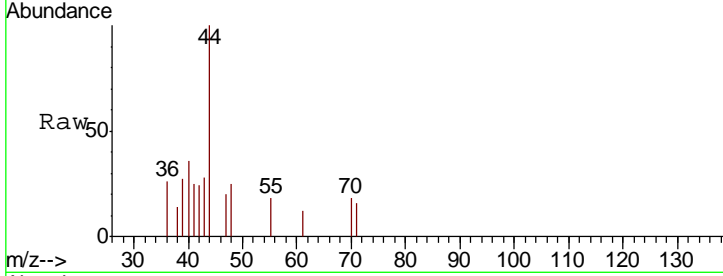




#74
 N-amyl acetate
 Concen: 1.780 ug/l
 RT: 10.90 min Scan# 1599
 Delta R.T. 0.00 min
 Lab File: VX004775.D
 Acq: 27 Sep 2018 15:43

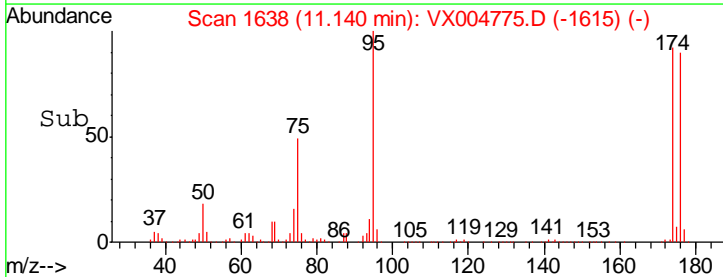
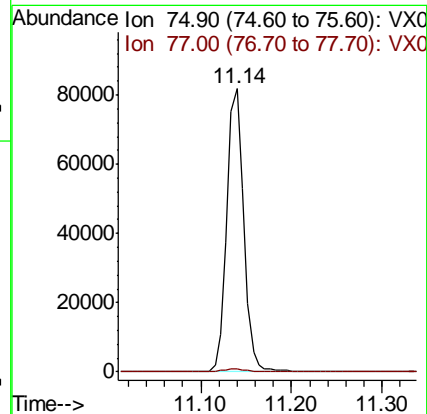
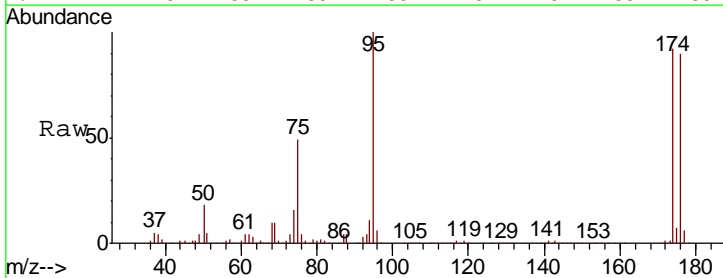
Instrument :
 MSVOA_X
 ClientSampled :
 MW-123-SEP18

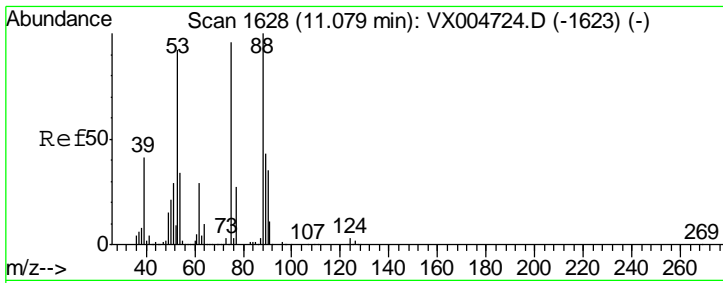
Tgt Ion	Resp	Lower	Upper
43	100		
70	46.1	37.4	56.0
55	34.4	21.8	32.8#
61	0.0	20.6	30.8#



#76
 1,2,3-Trichloropropane
 Concen: 21.416 ug/l
 RT: 11.14 min Scan# 1638
 Delta R.T. -0.16 min
 Lab File: VX004775.D
 Acq: 27 Sep 2018 15:43

Tgt Ion	Resp	Lower	Upper
75	100		
77	1.2	20.2	60.6#

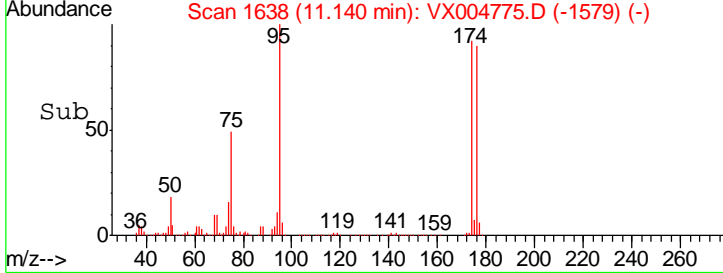
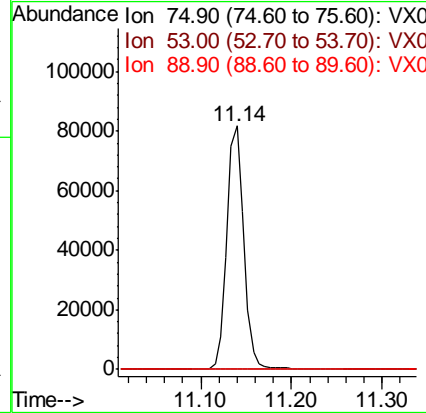
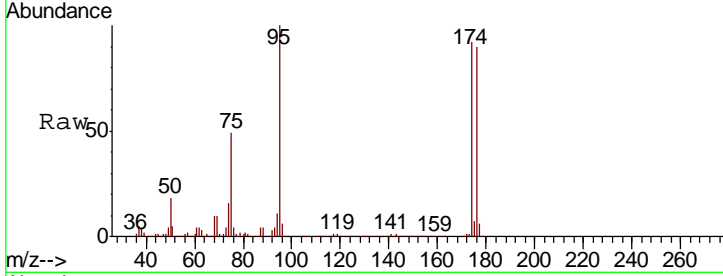




#81
 trans-1,4-Dichloro-2-butene
 Concen: 58.074 ug/l
 RT: 11.14 min Scan# 1638
 Delta R.T. 0.06 min
 Lab File: VX004775.D
 Acq: 27 Sep 2018 15:43

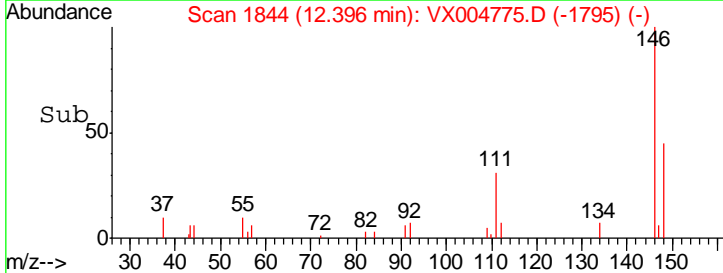
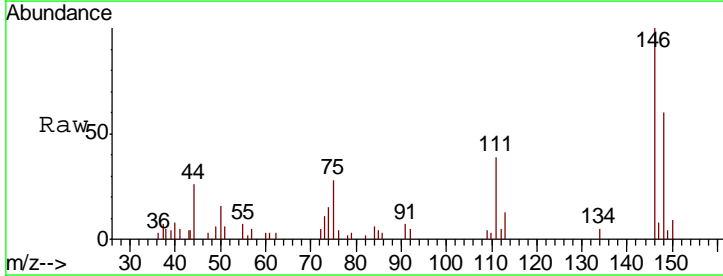
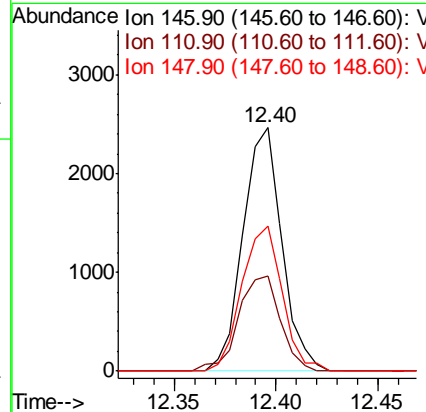
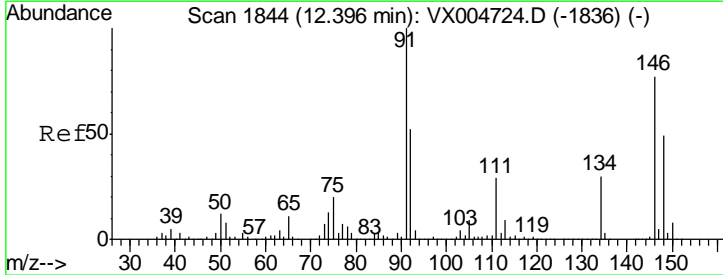
Instrument :
 MSVOA_X
 ClientSampled :
 MW-123-SEP18

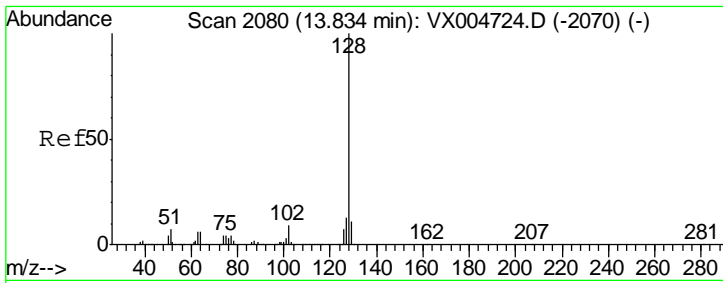
Tgt Ion	Resp	Lower	Upper
75	100		
53	0.3	80.1	120.1#
89	0.0	37.2	55.8#



#91
 1,2-Dichlorobenzene
 Concen: 0.409 ug/l
 RT: 12.40 min Scan# 1844
 Delta R.T. 0.00 min
 Lab File: VX004775.D
 Acq: 27 Sep 2018 15:43

Tgt Ion	Resp	Lower	Upper
146	100		
111	42.1	19.4	58.1
148	62.1	32.8	98.3





#95
 Naphthalene
 Concen: 0.805 ug/l
 RT: 13.83 min Scan# 2080
 Delta R.T. 0.00 min
 Lab File: VX004775.D
 Acq: 27 Sep 2018 15:43

Instrument :
 MSVOA_X
ClientSampled :
 MW-123-SEP18

Tot Ion	128	Resp	1603
Ion	Ratio	Lower	Upper
128	100		
127	16.7	10.2	15.2#
129	16.4	8.6	12.8#

