

Data Path : Z:\VOASRV\HPCHEM1\MSVOA X\DATA\VX092718\  
 Data File : VX004793.D  
 Acq On : 28 Sep 2018 00:37  
 Operator : JC/MD  
 Sample : J5048-01 40X  
 Misc : 5.0mL/MSVOA X/WATER  
 ALS Vial : 34 Sample Multiplier: 1

Instrument :  
 MSVOA\_X  
 ClientSampled :  
 CMT-18-2-SEP18

Quant Time: Sep 28 06:03:15 2018  
 Quant Method : Z:\VOASRV\HPCHEM1\MSVOA\_X\METHOD\82X092618W.M  
 Quant Title : SW846 8260  
 QLast Update : Wed Sep 26 14:17:02 2018  
 Response via : Initial Calibration

Internal Standards	R.T.	QIon	Response	Conc	Units	Dev(Min)
1) Pentafluorobenzene	5.67	168	243338	50.00	ug/l	0.00
34) 1,4-Difluorobenzene	6.86	114	389780	50.00	ug/l	0.00
63) Chlorobenzene-d5	10.12	117	374617	50.00	ug/l	0.00
72) 1,4-Dichlorobenzene-d4	12.08	152	211220	50.00	ug/l	0.00

## System Monitoring Compounds

33) 1,2-Dichloroethane-d4	6.07	65	182833	52.60	ug/l	0.00
Spiked Amount	50.000		Recovery	=	105.20%	
35) Dibromofluoromethane	5.50	113	153287	46.40	ug/l	0.00
Spiked Amount	50.000		Recovery	=	92.80%	
50) Toluene-d8	8.71	98	556969	50.72	ug/l	0.00
Spiked Amount	50.000		Recovery	=	101.44%	
62) 4-Bromofluorobenzene	11.14	95	202836	51.27	ug/l	0.00
Spiked Amount	50.000		Recovery	=	102.54%	

## Target Compounds

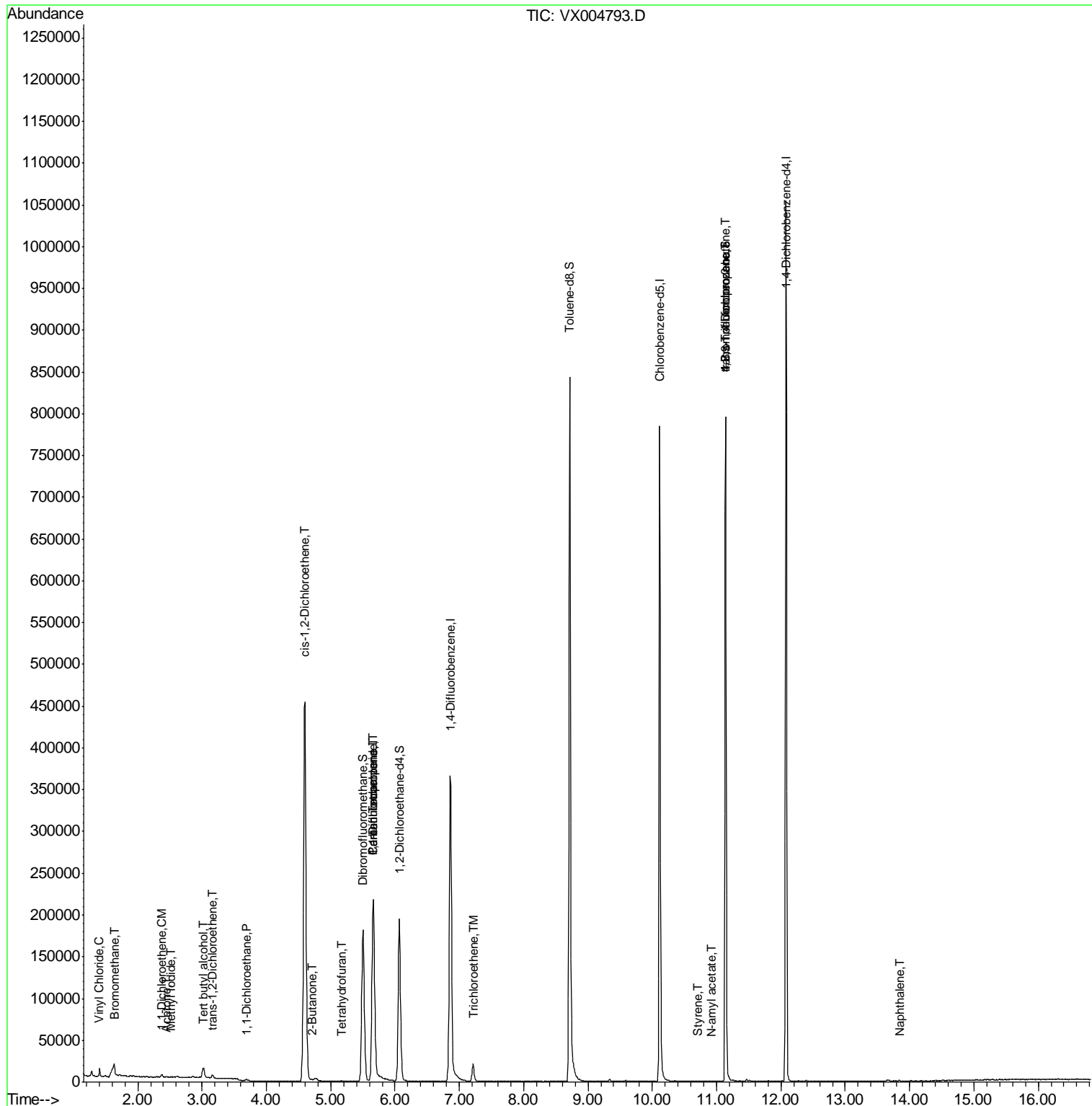
					Qvalue	
4) Vinyl Chloride	1.40	62	6719	1.780	ug/l	97
5) Bromomethane	1.64	94	617	0.276	ug/l #	77
6) Chloroethane	1.60	64	2996	Below Cal	#	66
10) Methyl Iodide	2.51	142	734	0.206	ug/l #	85
11) Tert butyl alcohol	3.02	59	7817	8.043	ug/l #	83
12) 1,1-Dichloroethene	2.37	96	1177	0.446	ug/l	92
16) Acetone	2.45	43	1034	0.510	ug/l	99
20) Methylene Chloride	2.85	84	912	Below Cal	#	80
21) trans-1,2-Dichloroethene	3.16	96	1256	0.435	ug/l	91
24) 1,1-Dichloroethane	3.70	63	2091	0.362	ug/l #	90
25) 2-Butanone	4.71	43	1262	0.422	ug/l #	85
27) cis-1,2-Dichloroethene	4.60	96	292760	90.796	ug/l	95
29) Tetrahydrofuran	5.17	42	1046	0.563	ug/l #	61
36) 1,1-Dichloropropene	5.66	75	16223	3.599	ug/l #	50
38) Carbon Tetrachloride	5.66	117	20957	4.423	ug/l #	15
44) Trichloroethene	7.21	130	8452	2.437	ug/l	98
70) Styrene	10.71	104	182	2.157	ug/l #	83
74) N-amyl acetate	10.91	43	99	1.761	ug/l #	40
76) 1,2,3-Trichloropropane	11.14	75	100287	21.183	ug/l #	37
80) 1,3,5-Trimethylbenzene	11.51	105	216	Below Cal		82
81) trans-1,4-Dichloro-2-buten	11.14	75	100287	57.466	ug/l #	10
84) 1,2,4-Trimethylbenzene	11.80	105	328	Below Cal		94
95) Naphthalene	13.83	128	646	0.756	ug/l #	86

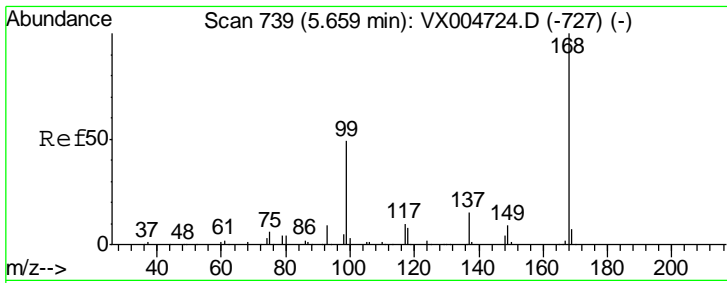
(#) = qualifier out of range (m) = manual integration (+) = signals summed

Data Path : Z:\VOASRV\HPCHEM1\MSVOA X\DATA\VX092718\  
 Data File : VX004793.D  
 Acq On : 28 Sep 2018 00:37  
 Operator : JC/MD  
 Sample : J5048-01 40X  
 Misc : 5.0mL/MSVOA X/WATER  
 ALS Vial : 34 Sample Multiplier: 1

Instrument :  
 MSVOA\_X  
 Client Sampled :  
 CMT-18-2-SEP18

Quant Time: Sep 28 06:03:15 2018  
 Quant Method : Z:\VOASRV\HPCHEM1\MSVOA\_X\METHOD\82X092618W.M  
 Quant Title : SW846 8260  
 QLast Update : Wed Sep 26 14:17:02 2018  
 Response via : Initial Calibration

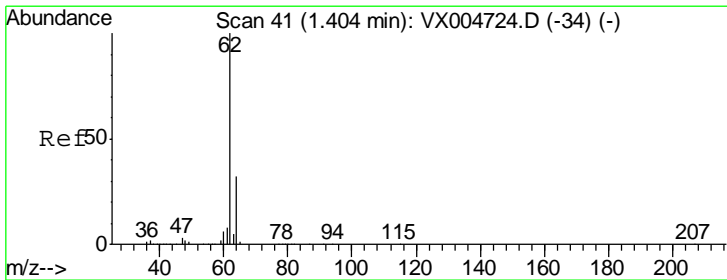
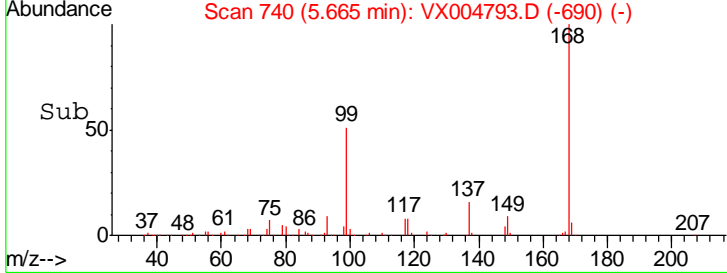
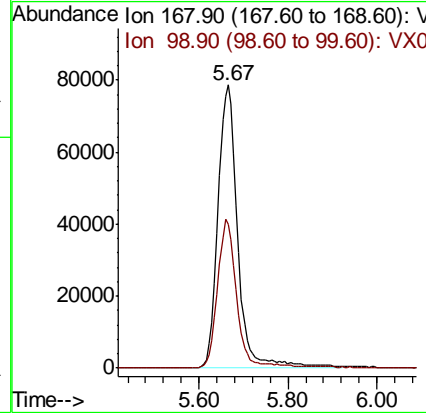
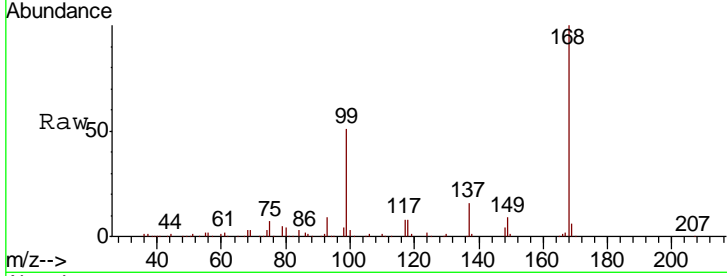




#1  
 Pentafluorobenzene  
 Concen: 50.000 ug/l  
 RT: 5.67 min Scan# 740  
 Delta R.T. 0.01 min  
 Lab File: VX004793.D  
 Acq: 28 Sep 2018 00:37

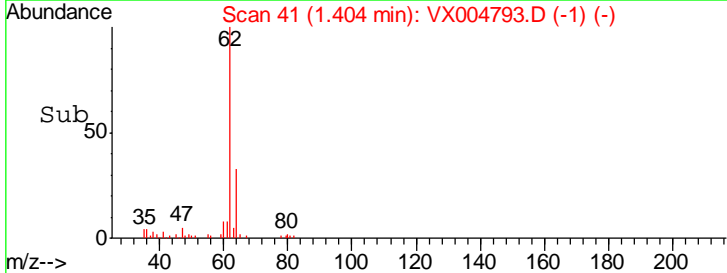
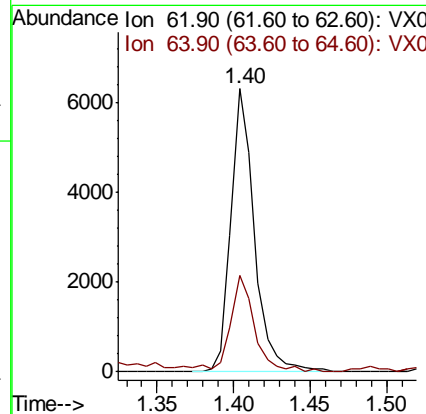
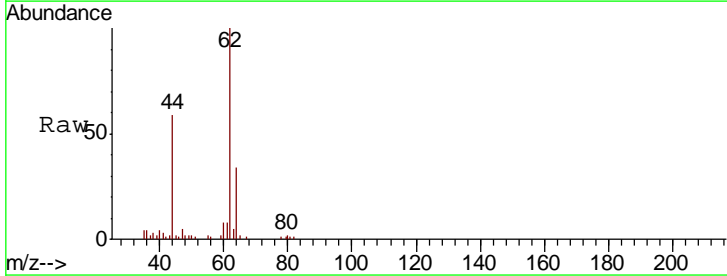
Instrument : MSVOA\_X  
 ClientSampled : CMT-18-2-SEP18

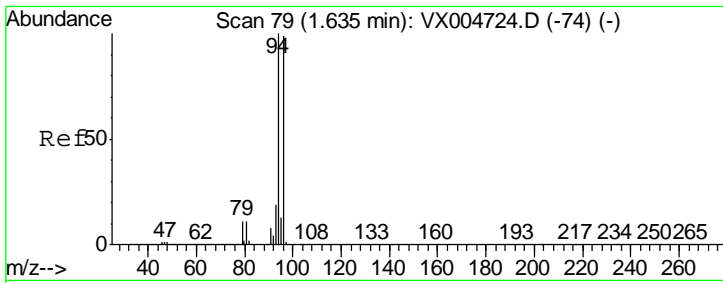
Tgt Ion	Resp	Lower	Upper
168	243338		
99	50.6	39.9	59.9



#4  
 Vinyl Chloride  
 Concen: 1.780 ug/l  
 RT: 1.40 min Scan# 41  
 Delta R.T. 0.00 min  
 Lab File: VX004793.D  
 Acq: 28 Sep 2018 00:37

Tgt Ion	Resp	Lower	Upper
62	6719		
64	34.1	25.8	38.8

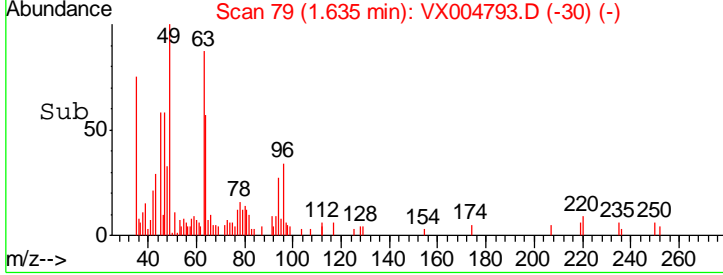
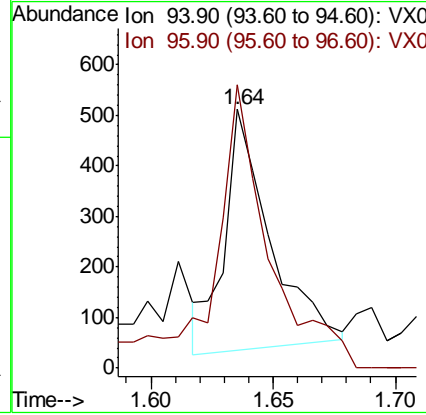
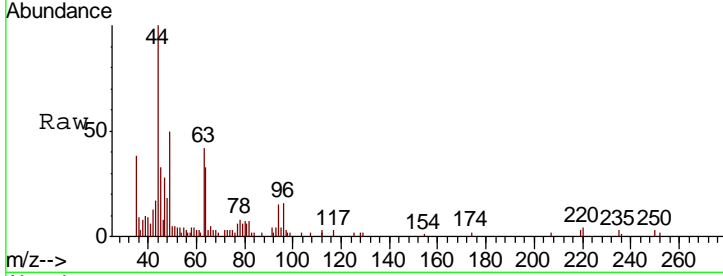




#5  
 Bromomethane  
 Concen: 0.276 ug/l  
 RT: 1.64 min Scan# 79  
 Delta R.T. 0.00 min  
 Lab File: VX004793.D  
 Acq: 28 Sep 2018 00:37

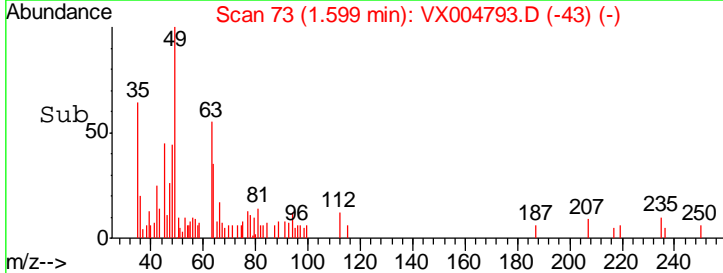
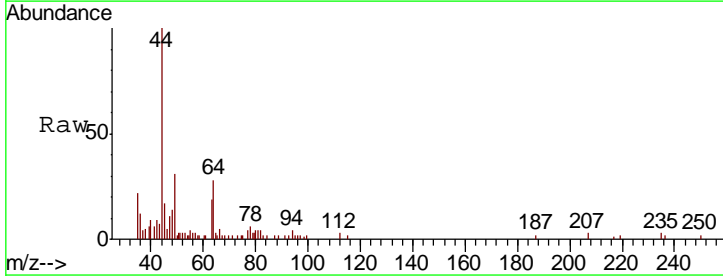
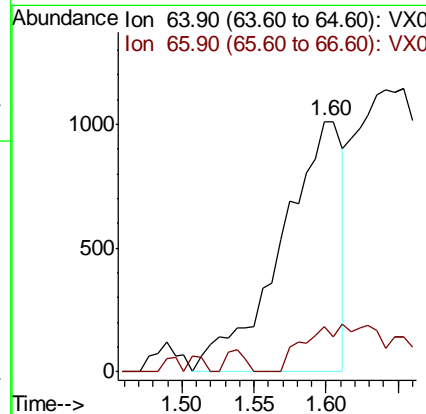
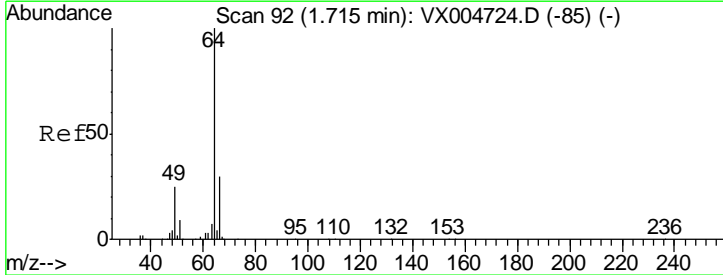
**Instrument :**  
 MSVOA\_X  
**ClientSampled :**  
 CMT-18-2-SEP18

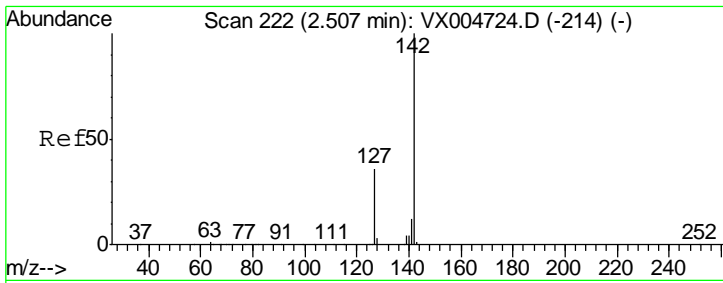
Tgt Ion: 94 Resp: 617  
 Ion Ratio Lower Upper  
 94 100  
 96 115.2 74.5 111.7#



#6  
 Chloroethane  
 Concen: Below Cal  
 RT: 1.60 min Scan# 73  
 Delta R.T. -0.12 min  
 Lab File: VX004793.D  
 Acq: 28 Sep 2018 00:37

Tgt Ion: 64 Resp: 2996  
 Ion Ratio Lower Upper  
 64 100  
 66 12.2 24.6 36.8#

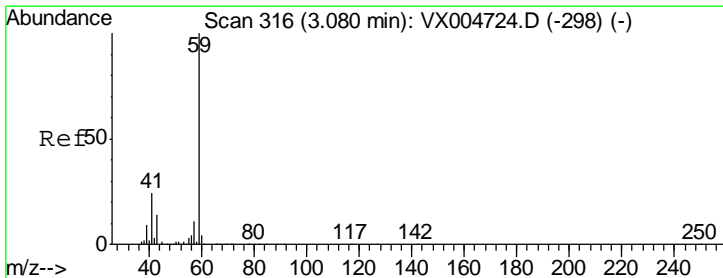
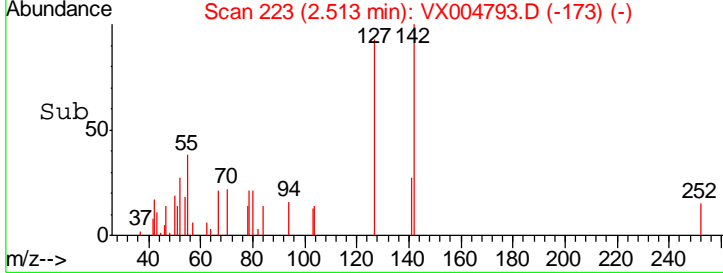
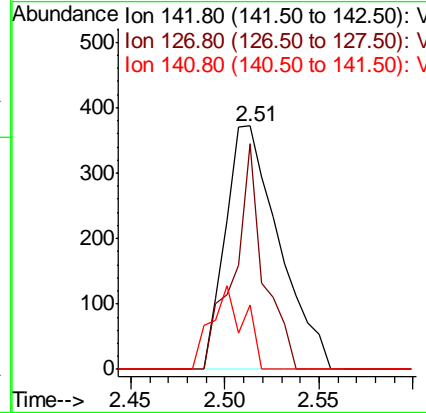
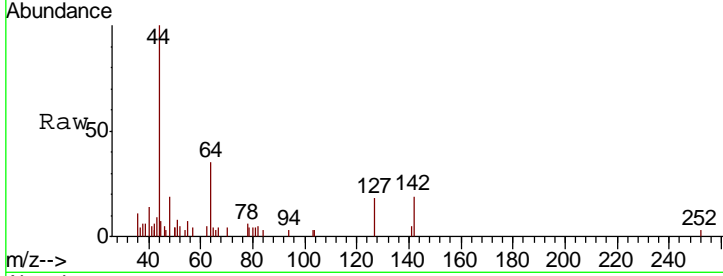




#10  
 Methyl Iodide  
 Concen: 0.206 ug/l  
 RT: 2.51 min Scan# 223  
 Delta R.T. 0.01 min  
 Lab File: VX004793.D  
 Acq: 28 Sep 2018 00:37

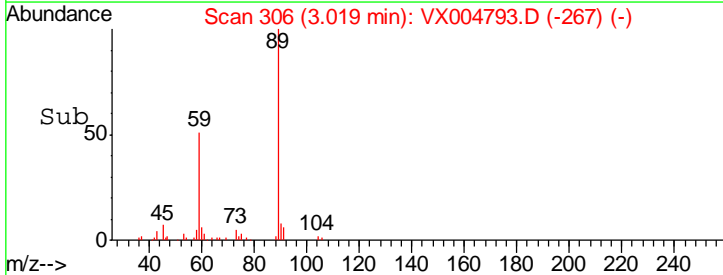
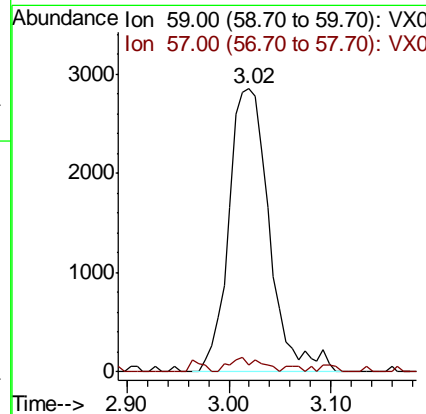
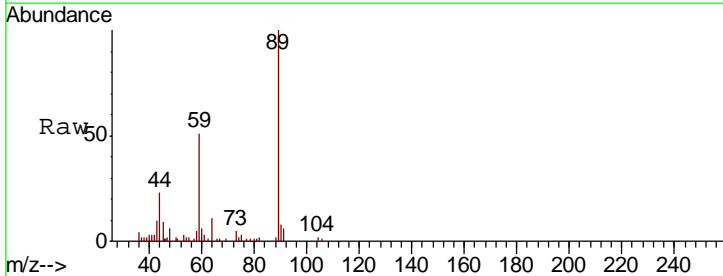
Instrument :  
 MSVOA\_X  
 ClientSampled :  
 CMT-18-2-SEP18

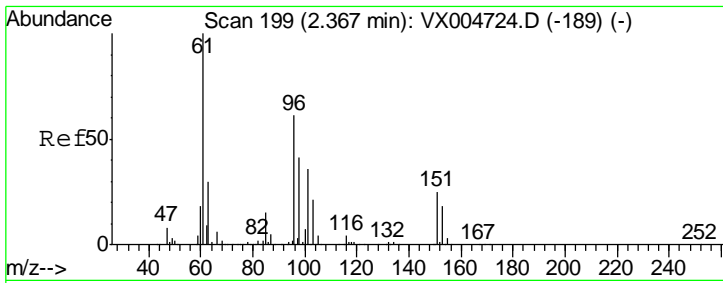
Tgt Ion	Resp	Lower	Upper
142	100		
127	51.6	33.8	50.6#
141	21.3	11.4	17.0#



#11  
 Tert butyl alcohol  
 Concen: 8.043 ug/l  
 RT: 3.02 min Scan# 306  
 Delta R.T. -0.06 min  
 Lab File: VX004793.D  
 Acq: 28 Sep 2018 00:37

Tgt Ion	Resp	Lower	Upper
59	100		
57	3.8	8.2	12.4#

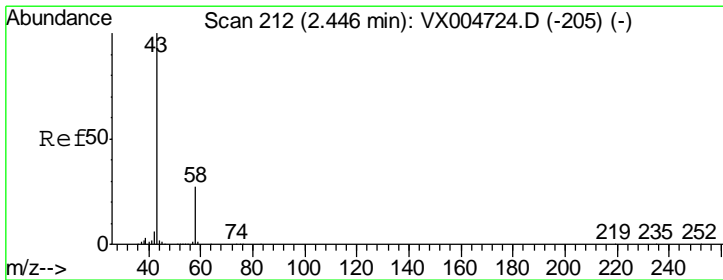
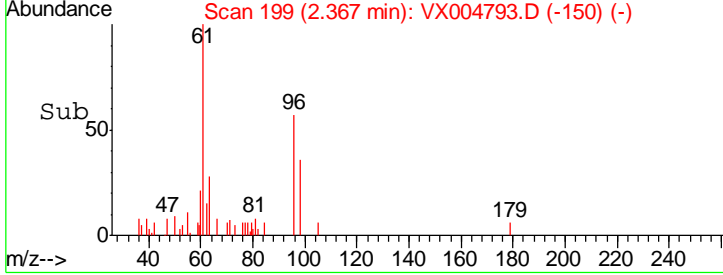
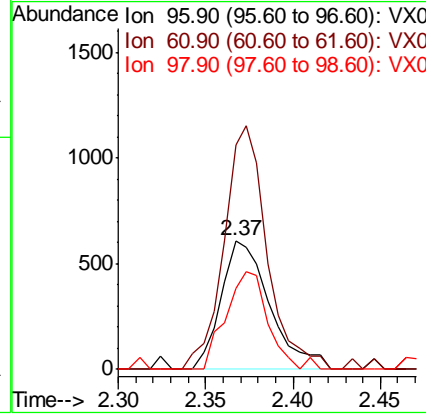
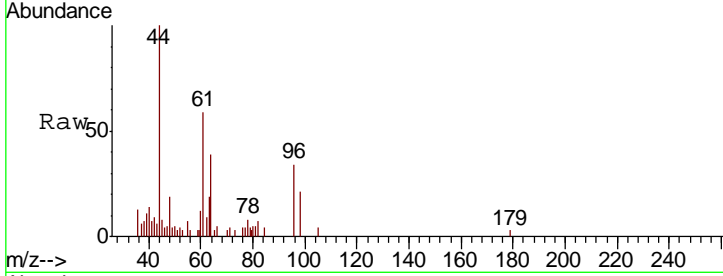




#12  
 1,1-Dichloroethene  
 Concen: 0.446 ug/l  
 RT: 2.37 min Scan# 199  
 Delta R.T. 0.00 min  
 Lab File: VX004793.D  
 Acq: 28 Sep 2018 00:37

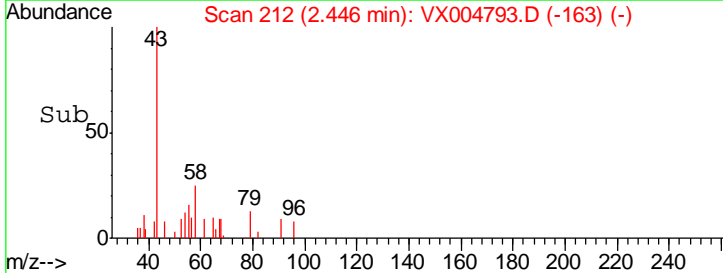
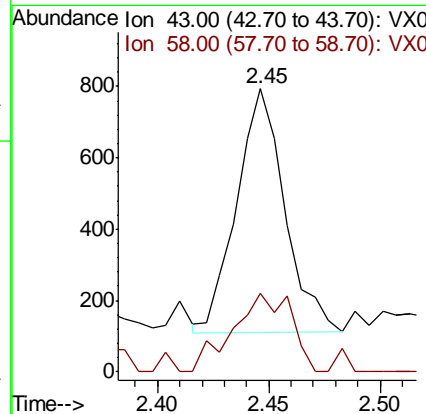
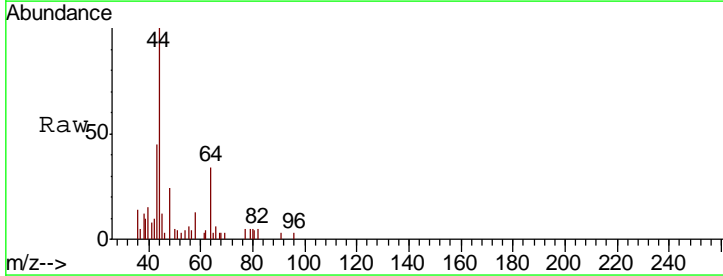
Instrument :  
 MSVOA\_X  
 ClientSampled :  
 CMT-18-2-SEP18

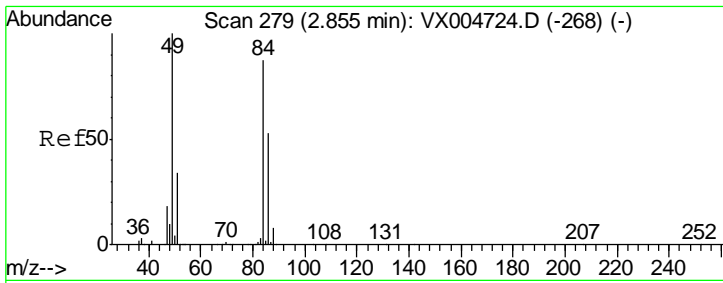
Tgt Ion	Resp	Lower	Upper
96	1177		
96	100		
61	175.2	128.8	193.2
98	63.3	52.2	78.2



#16  
 Acetone  
 Concen: 0.510 ug/l  
 RT: 2.45 min Scan# 212  
 Delta R.T. 0.00 min  
 Lab File: VX004793.D  
 Acq: 28 Sep 2018 00:37

Tgt Ion	Resp	Lower	Upper
43	1034		
43	100		
58	32.4	26.2	39.4

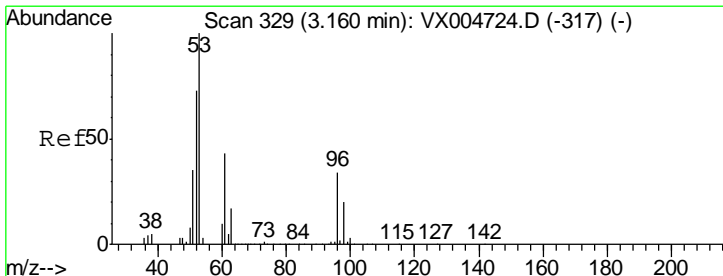
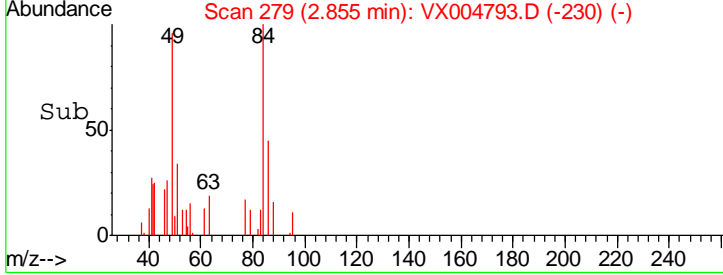
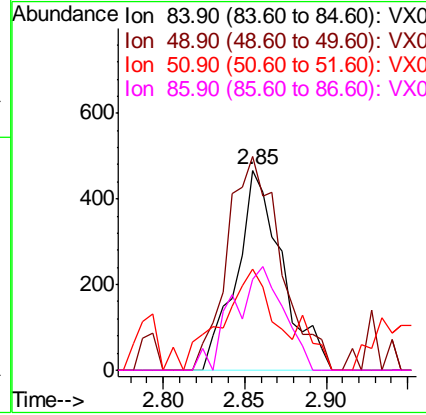
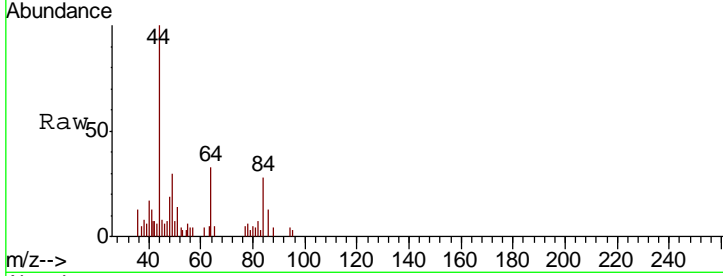




#20  
 Methylene Chloride  
 Concen: Below Cal  
 RT: 2.85 min Scan# 279  
 Delta R.T. 0.00 min  
 Lab File: VX004793.D  
 Acq: 28 Sep 2018 00:37

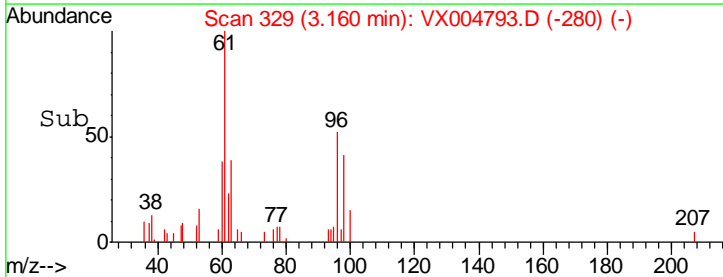
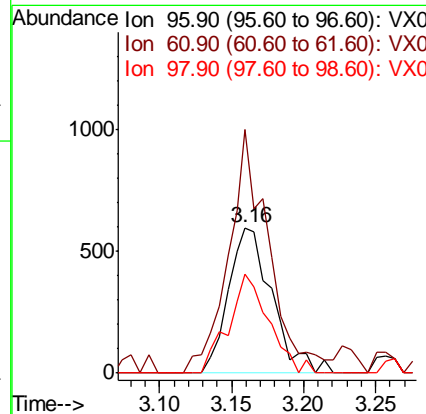
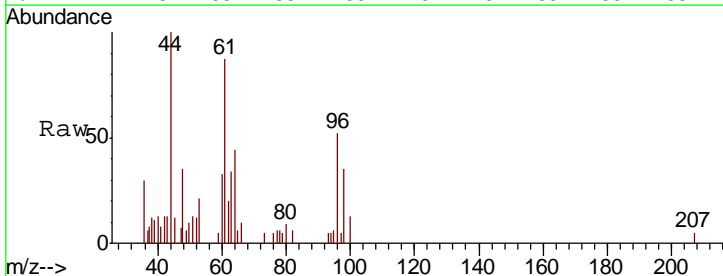
Instrument : MSVOA\_X  
 ClientSampled : CMT-18-2-SEP18

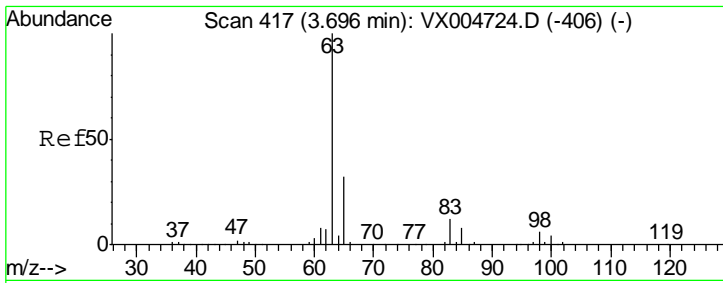
Tgt Ion	Resp	Lower	Upper
84	912		
49	106.9	101.2	151.8
51	50.5	29.5	44.3#
86	45.2	52.3	78.5#



#21  
 trans-1,2-Dichloroethene  
 Concen: 0.435 ug/l  
 RT: 3.16 min Scan# 329  
 Delta R.T. 0.00 min  
 Lab File: VX004793.D  
 Acq: 28 Sep 2018 00:37

Tgt Ion	Resp	Lower	Upper
96	1256		
61	155.8	113.8	170.6
98	68.1	51.8	77.8

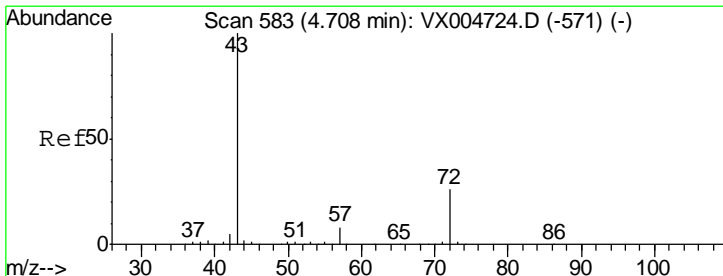
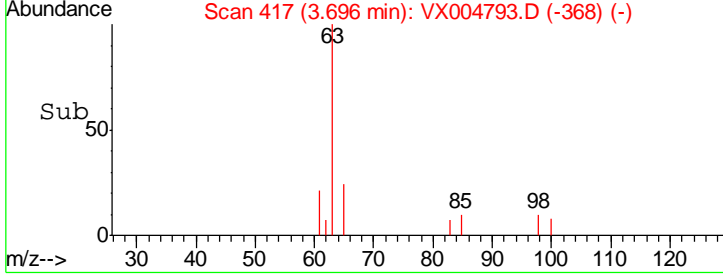
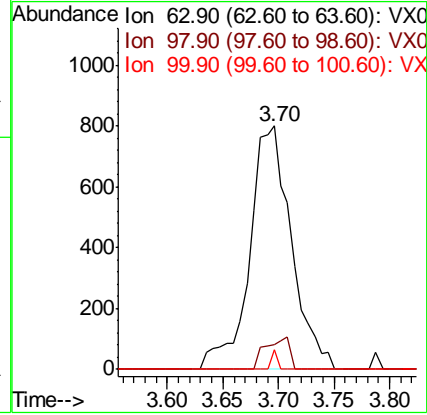
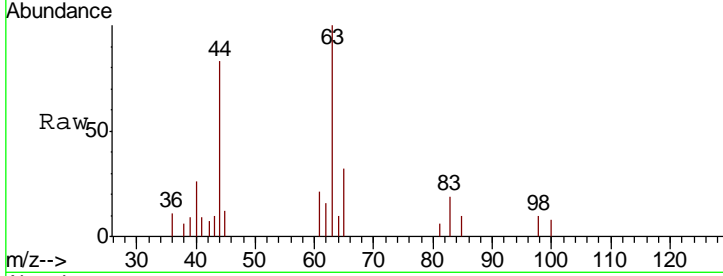




#24  
 1,1-Dichloroethane  
 Concen: 0.362 ug/l  
 RT: 3.70 min Scan# 417  
 Delta R.T. 0.00 min  
 Lab File: VX004793.D  
 Acq: 28 Sep 2018 00:37

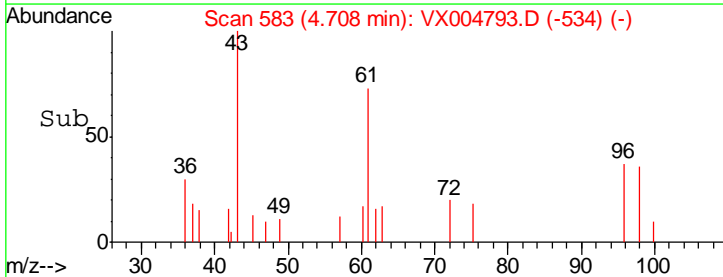
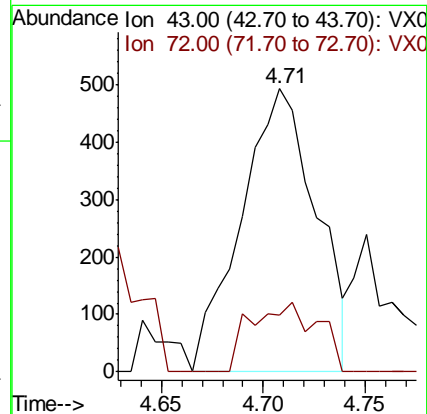
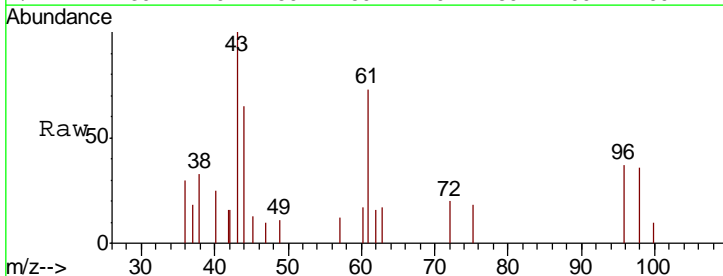
Instrument :  
 MSVOA\_X  
 ClientSampled :  
 CMT-18-2-SEP18

Tgt Ion	Resp	Lower	Upper
63	100		
98	10.2	3.5	10.4
100	7.9	2.4	7.1#

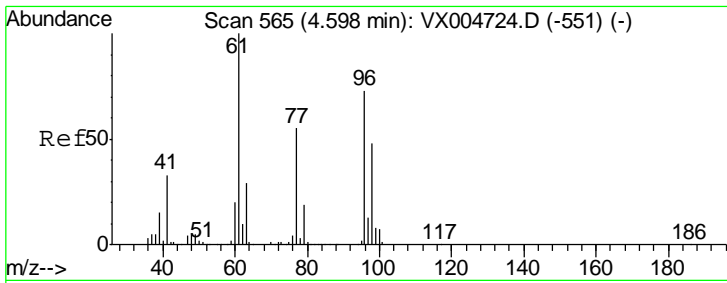


#25  
 2-Butanone  
 Concen: 0.422 ug/l  
 RT: 4.71 min Scan# 583  
 Delta R.T. 0.00 min  
 Lab File: VX004793.D  
 Acq: 28 Sep 2018 00:37

Tgt Ion	Resp	Lower	Upper
43	100		
72	19.9	22.0	33.0#



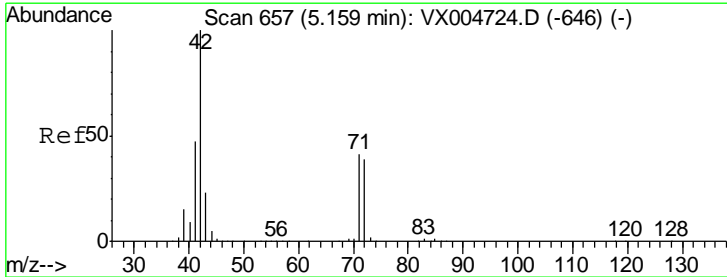
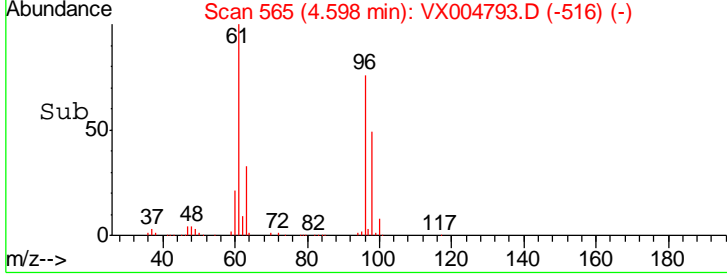
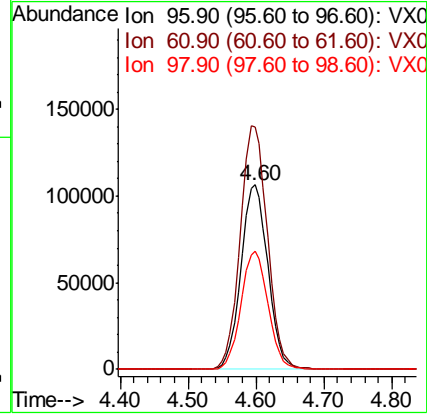
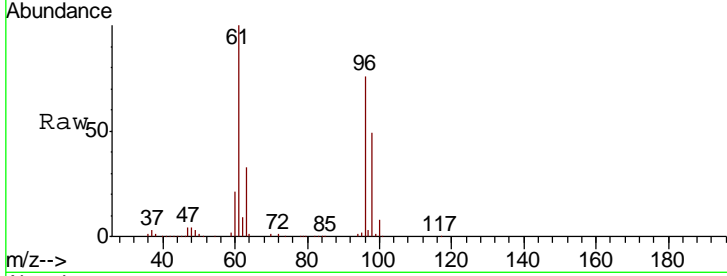




#27  
 cis-1,2-Dichloroethene  
 Concen: 90.796 ug/l  
 RT: 4.60 min Scan# 565  
 Delta R.T. 0.00 min  
 Lab File: VX004793.D  
 Acq: 28 Sep 2018 00:37

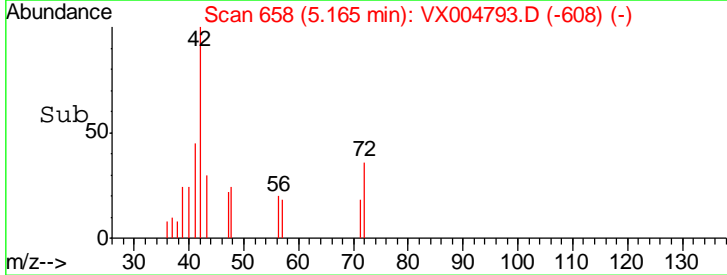
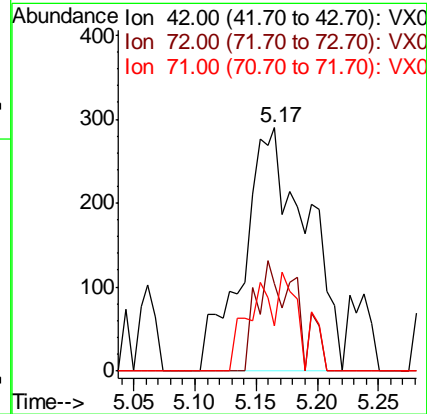
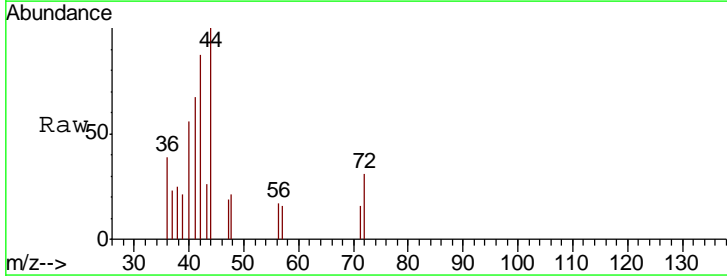
Instrument : MSVOA\_X  
 ClientSampled : VX004793.D  
 CMT-18-2-SEP18

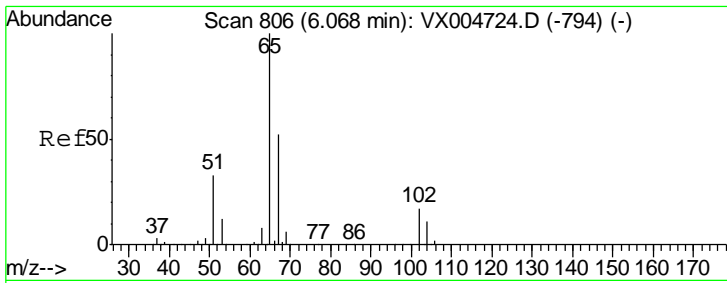
Tgt Ion	Resp	Lower	Upper
96	292760		
61	133.7	0.0	282.6
98	64.3	0.0	130.2



#29  
 Tetrahydrofuran  
 Concen: 0.563 ug/l  
 RT: 5.17 min Scan# 658  
 Delta R.T. 0.01 min  
 Lab File: VX004793.D  
 Acq: 28 Sep 2018 00:37

Tgt Ion	Resp	Lower	Upper
42	1046		
72	28.6	37.4	56.0#
71	10.4	34.5	51.7#

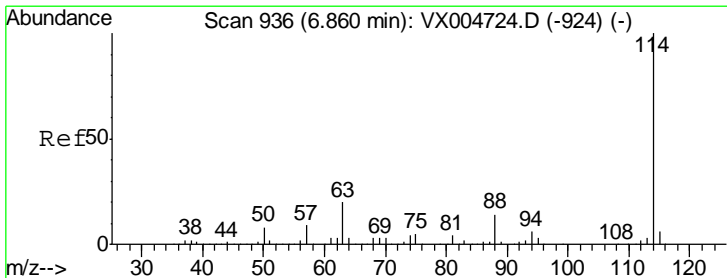
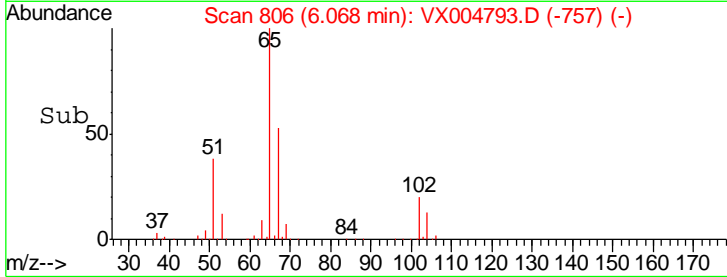
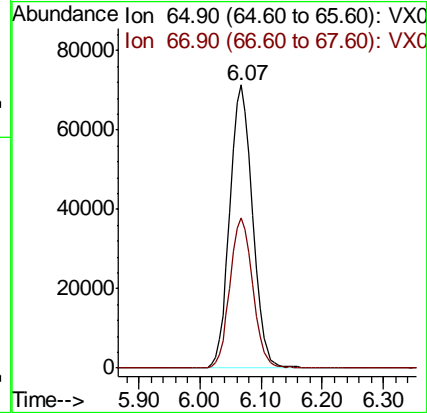
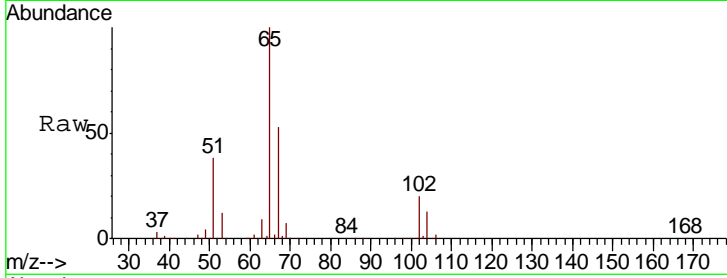




#33  
 1,2-Dichloroethane-d4  
 Concen: 52.597 ug/l  
 RT: 6.07 min Scan# 806  
 Delta R.T. 0.00 min  
 Lab File: VX004793.D  
 Acq: 28 Sep 2018 00:37

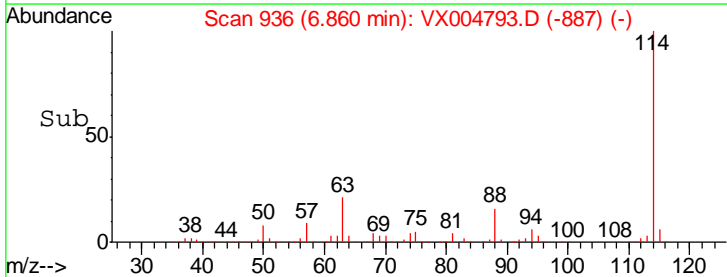
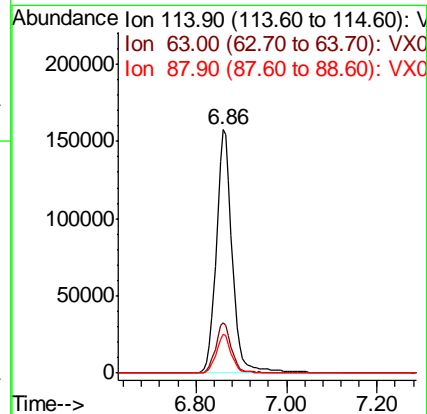
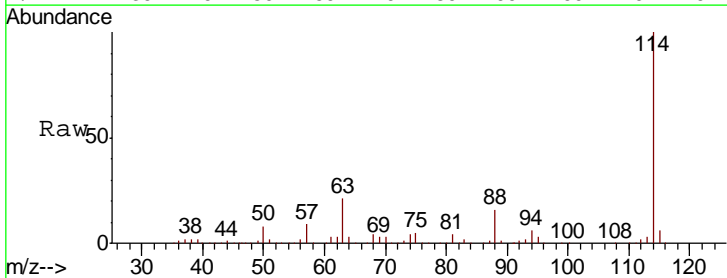
Instrument :  
 MSVOA\_X  
 ClientSampleId :  
 CMT-18-2-SEP18

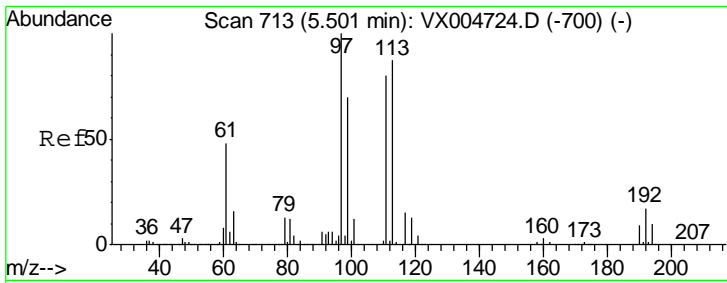
Tgt Ion	Resp	Lower	Upper
65	182833		
67	53.2	0.0	106.8



#34  
 1,4-Difluorobenzene  
 Concen: 50.000 ug/l  
 RT: 6.86 min Scan# 936  
 Delta R.T. 0.00 min  
 Lab File: VX004793.D  
 Acq: 28 Sep 2018 00:37

Tgt Ion	Resp	Lower	Upper
114	389780		
63	20.8	0.0	39.0
88	15.7	0.0	30.4

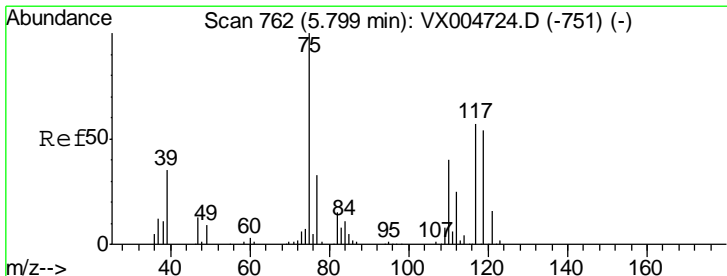
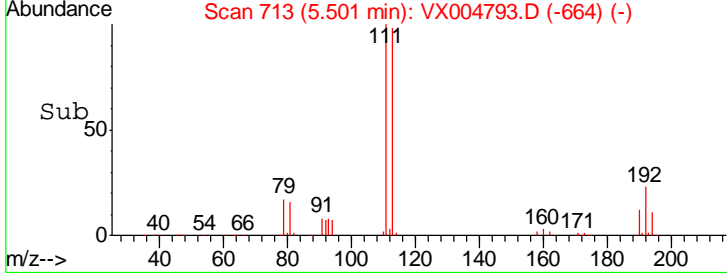
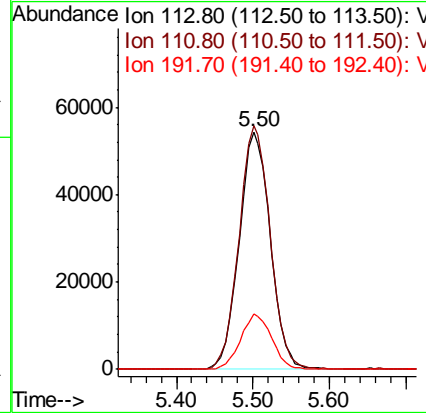
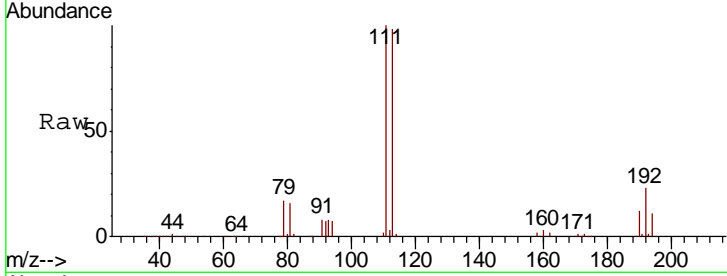




#35  
 Dibromofluoromethane  
 Concen: 46.402 ug/l  
 RT: 5.50 min Scan# 713  
 Delta R.T. 0.00 min  
 Lab File: VX004793.D  
 Acq: 28 Sep 2018 00:37

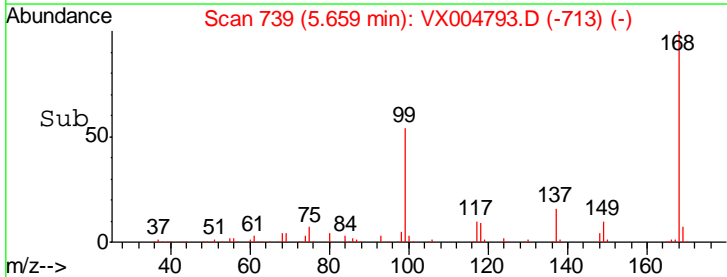
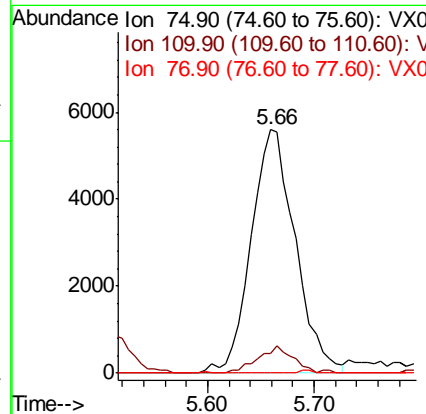
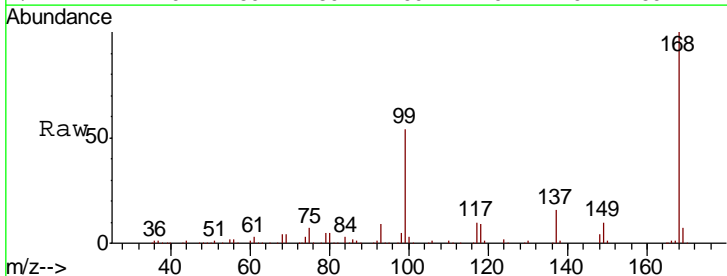
**Instrument :**  
 MSVOA\_X  
**ClientSampled :**  
 CMT-18-2-SEP18

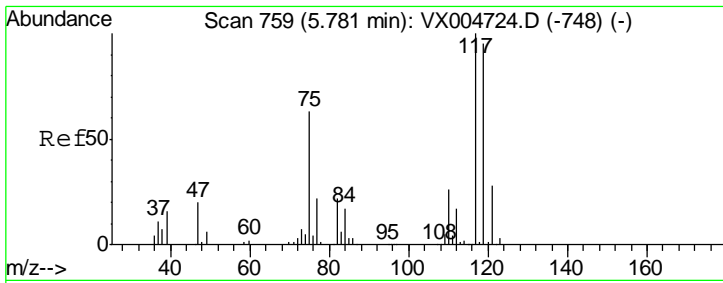
Tgt Ion	Resp	Lower	Upper
113	153287		
113	100		
111	102.5	82.4	123.6
192	23.0	19.4	29.2



#36  
 1,1-Dichloropropene  
 Concen: 3.599 ug/l  
 RT: 5.66 min Scan# 739  
 Delta R.T. -0.14 min  
 Lab File: VX004793.D  
 Acq: 28 Sep 2018 00:37

Tgt Ion	Resp	Lower	Upper
75	16223		
75	100		
110	9.1	18.0	54.0#
77	0.0	24.6	36.8#

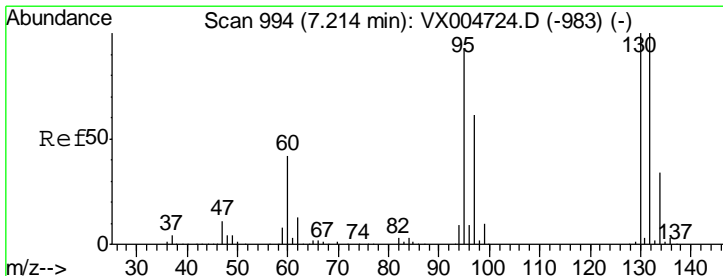
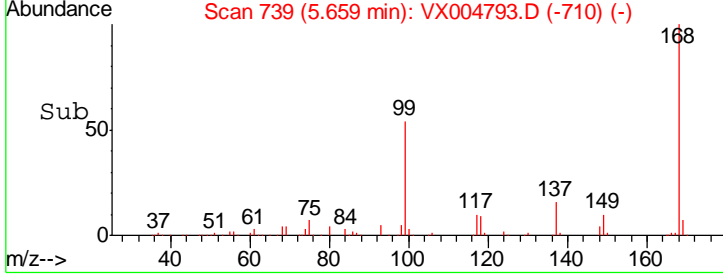
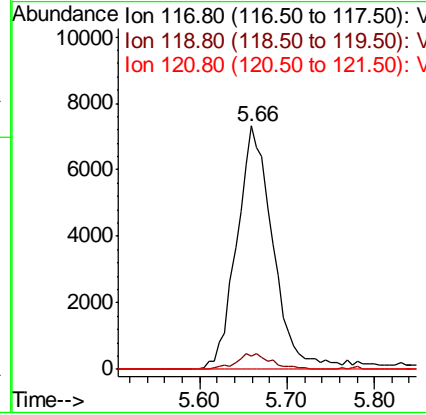
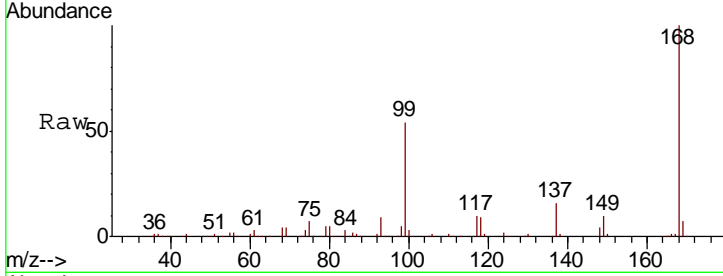




#38  
 Carbon Tetrachloride  
 Concen: 4.423 ug/l  
 RT: 5.66 min Scan# 739  
 Delta R.T. -0.12 min  
 Lab File: VX004793.D  
 Acq: 28 Sep 2018 00:37

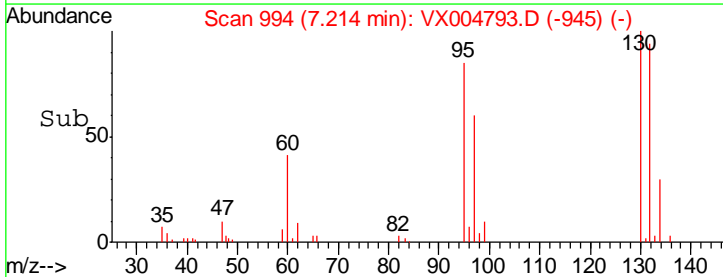
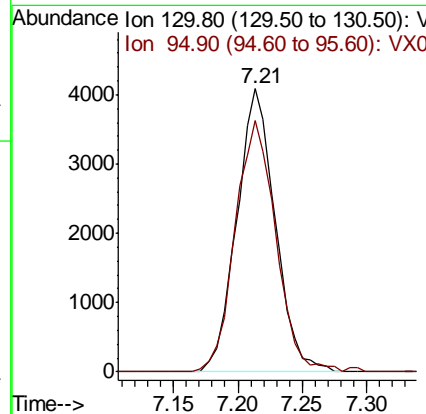
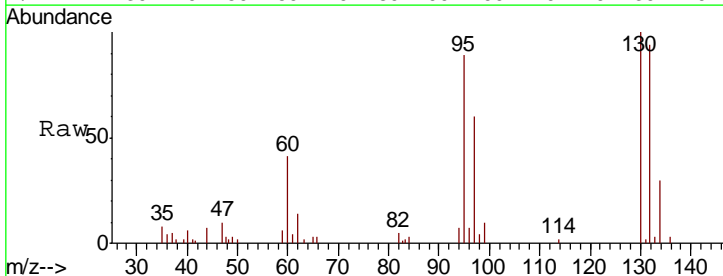
**Instrument :**  
 MSVOA\_X  
**ClientSampled :**  
 CMT-18-2-SEP18

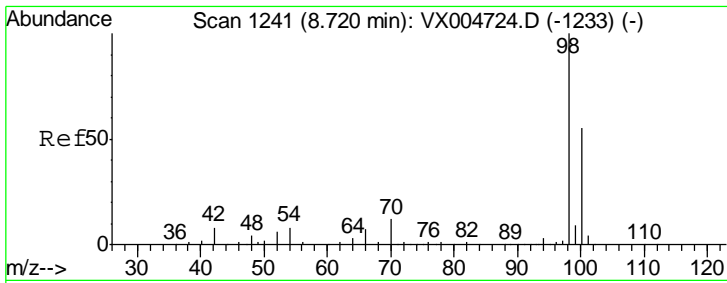
Tgt Ion	Resp	Lower	Upper
117	100		
119	5.6	78.8	118.2#
121	0.0	24.9	37.3#



#44  
 Trichloroethene  
 Concen: 2.437 ug/l  
 RT: 7.21 min Scan# 994  
 Delta R.T. 0.00 min  
 Lab File: VX004793.D  
 Acq: 28 Sep 2018 00:37

Tgt Ion	Resp	Lower	Upper
130	100		
95	88.6	0.0	181.6

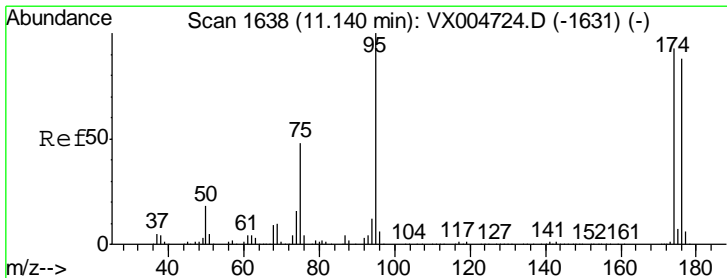
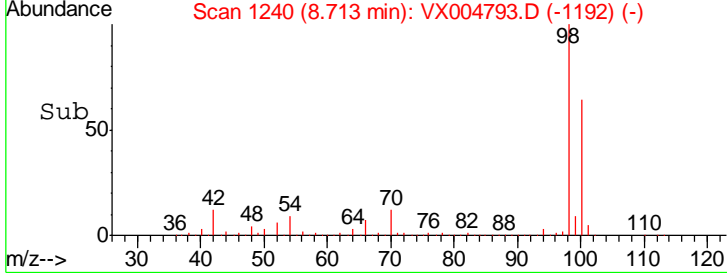
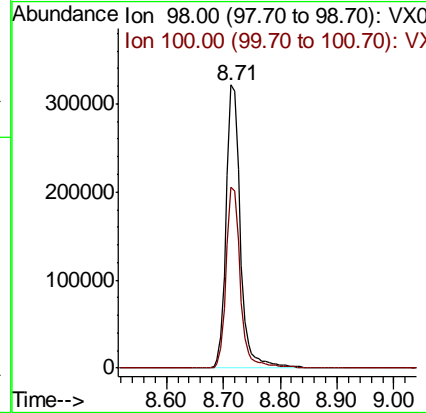
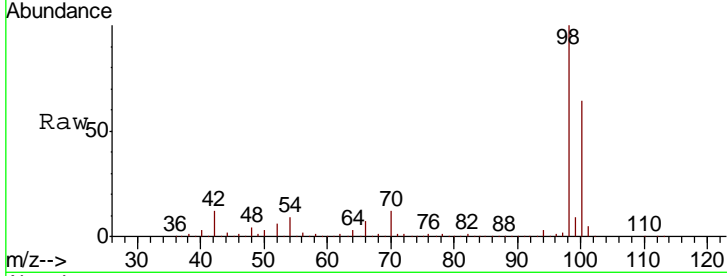




#50  
 Toluene-d8  
 Concen: 50.715 ug/l  
 RT: 8.71 min Scan# 1240  
 Delta R.T. -0.01 min  
 Lab File: VX004793.D  
 Acq: 28 Sep 2018 00:37

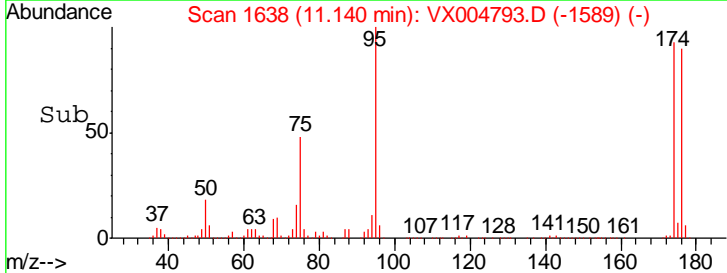
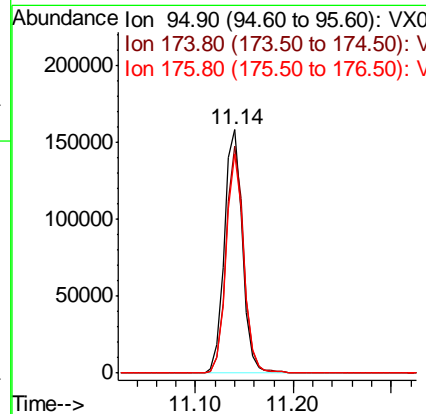
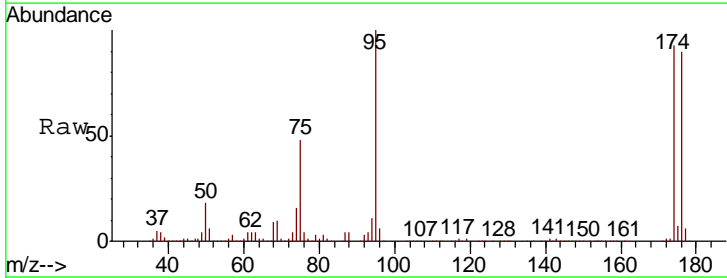
**Instrument :**  
 MSVOA\_X  
**ClientSampled :**  
 CMT-18-2-SEP18

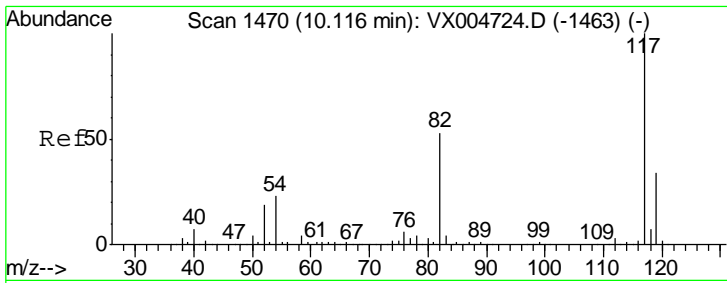
Tgt Ion: 98 Resp: 556969  
 Ion Ratio Lower Upper  
 98 100  
 100 63.9 52.9 79.3



#62  
 4-Bromofluorobenzene  
 Concen: 51.268 ug/l  
 RT: 11.14 min Scan# 1638  
 Delta R.T. 0.00 min  
 Lab File: VX004793.D  
 Acq: 28 Sep 2018 00:37

Tgt Ion: 95 Resp: 202836  
 Ion Ratio Lower Upper  
 95 100  
 174 91.1 0.0 185.2  
 176 87.9 0.0 178.6

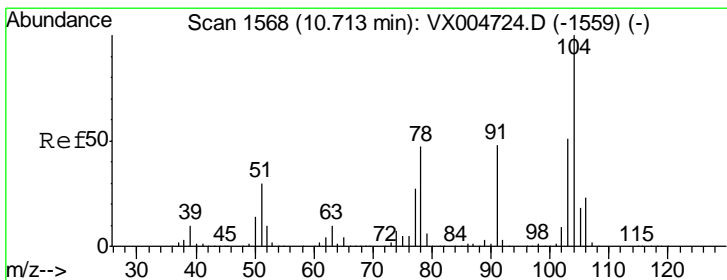
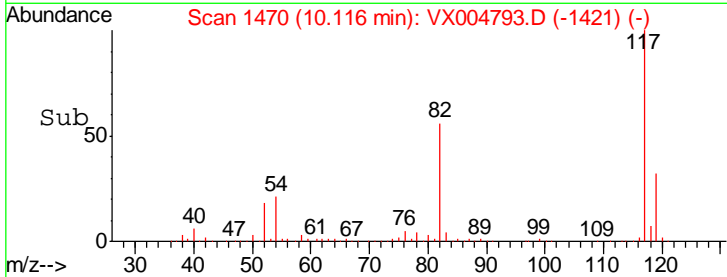
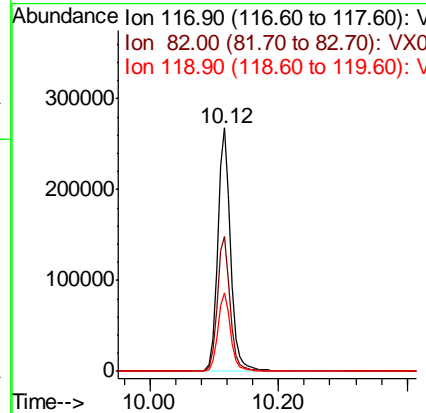
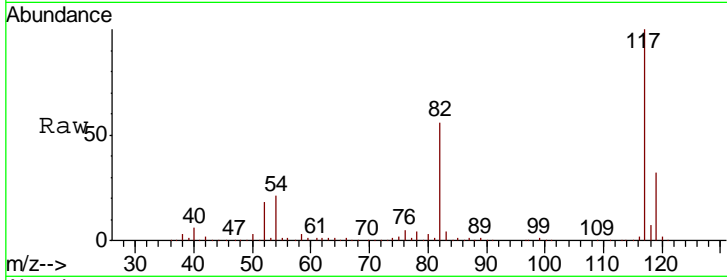




#63  
 Chlorobenzene-d5  
 Concen: 50.000 ug/l  
 RT: 10.12 min Scan# 1470  
 Delta R.T. 0.00 min  
 Lab File: VX004793.D  
 Acq: 28 Sep 2018 00:37

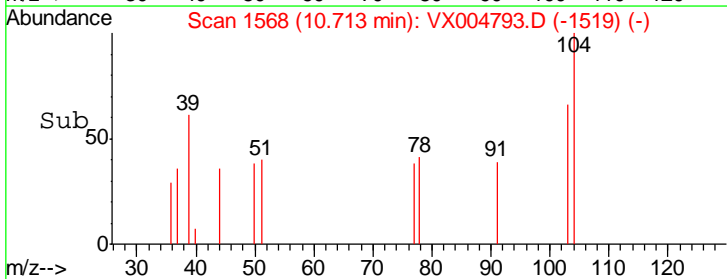
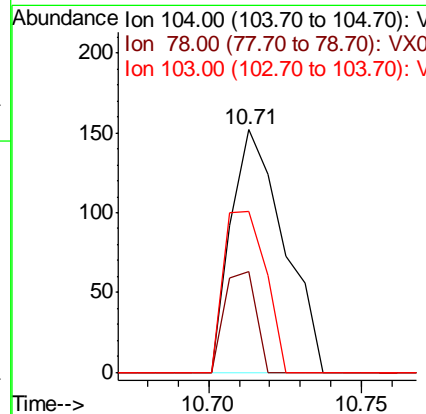
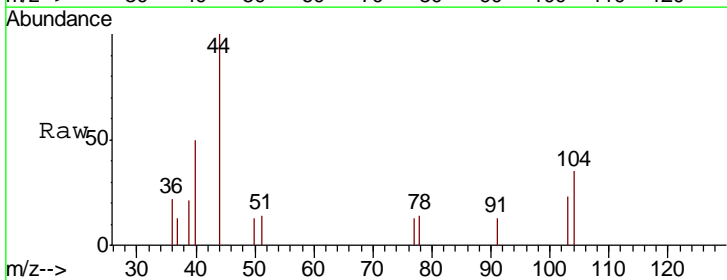
Instrument :  
 MSVOA\_X  
 ClientSampled :  
 CMT-18-2-SEP18

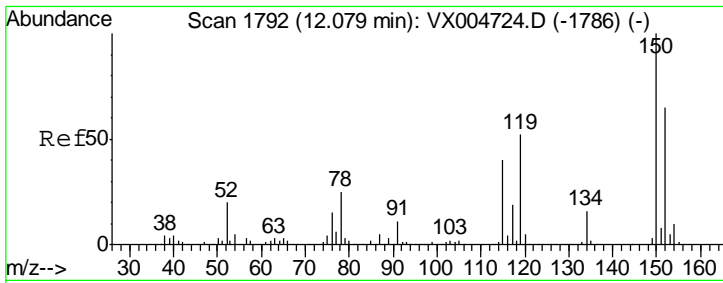
Tgt Ion	Resp	Lower	Upper
117	374617		
82	55.5	47.8	71.6
119	32.2	29.3	43.9



#70  
 Styrene  
 Concen: 2.157 ug/l  
 RT: 10.71 min Scan# 1568  
 Delta R.T. 0.00 min  
 Lab File: VX004793.D  
 Acq: 28 Sep 2018 00:37

Tgt Ion	Resp	Lower	Upper
104	182		
78	24.7	37.4	56.0#
103	52.7	43.8	65.6

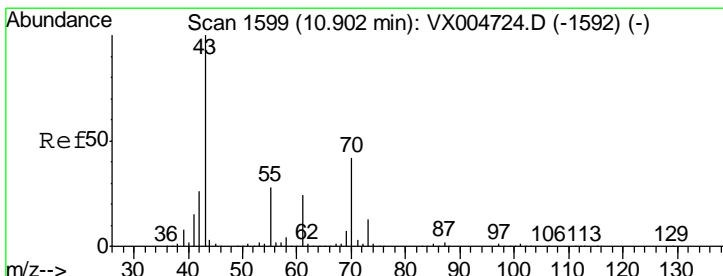
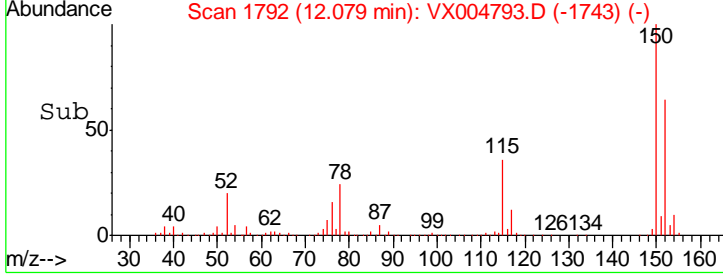
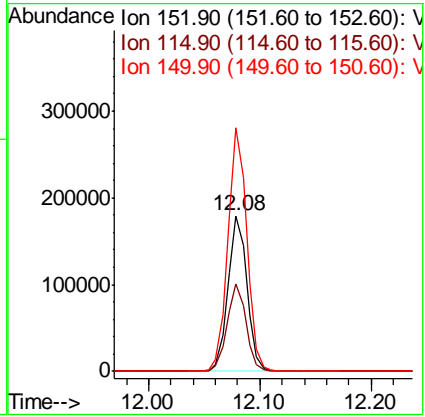
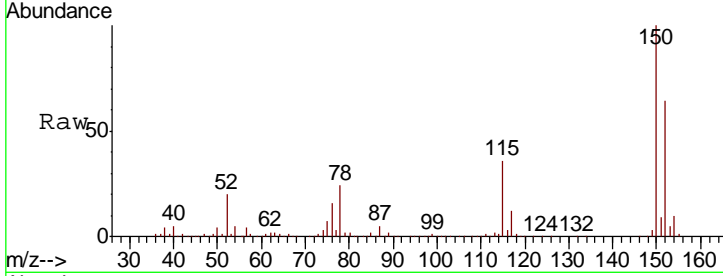




#72  
 1,4-Dichlorobenzene-d4  
 Concen: 50.000 ug/l  
 RT: 12.08 min Scan# 1792  
 Delta R.T. 0.00 min  
 Lab File: VX004793.D  
 Acq: 28 Sep 2018 00:37

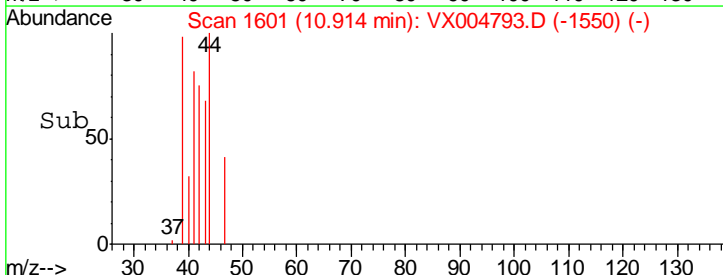
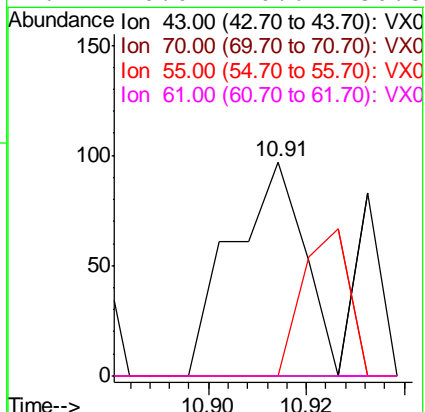
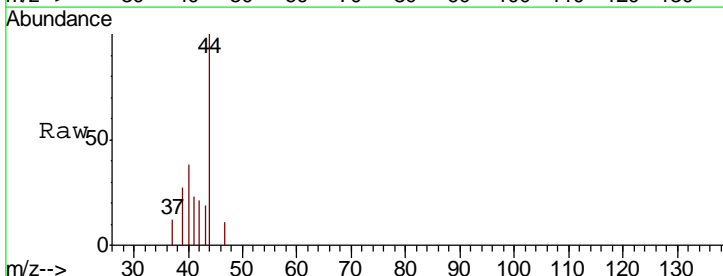
Instrument : MSVOA\_X  
 ClientSampled : CMT-18-2-SEP18

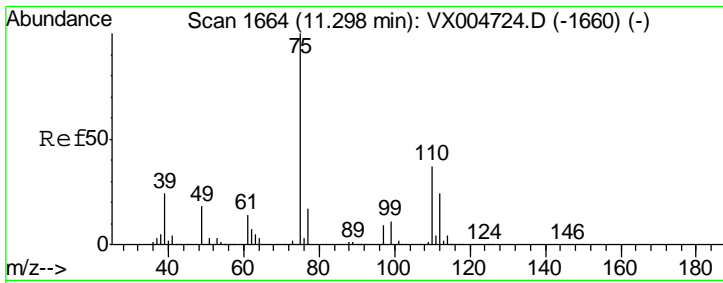
Tgt Ion	Resp	Lower	Upper
152	100		
115	56.1	39.0	117.0
150	156.2	0.0	351.0



#74  
 N-amyl acetate  
 Concen: 1.761 ug/l  
 RT: 10.91 min Scan# 1601  
 Delta R.T. 0.01 min  
 Lab File: VX004793.D  
 Acq: 28 Sep 2018 00:37

Tgt Ion	Resp	Lower	Upper
43	100		
70	0.0	37.4	56.0#
55	0.0	21.8	32.8#
61	0.0	20.6	30.8#

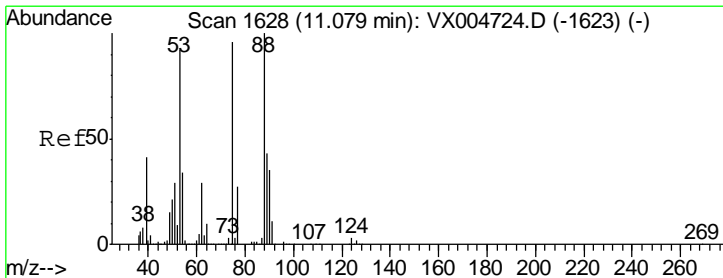
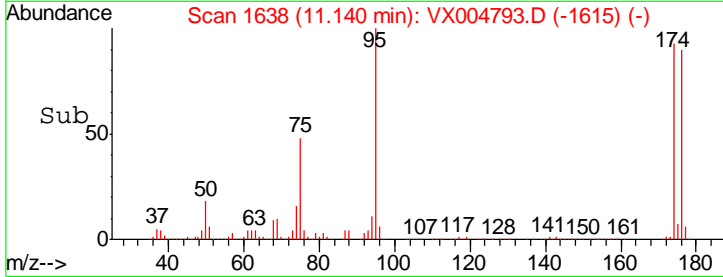
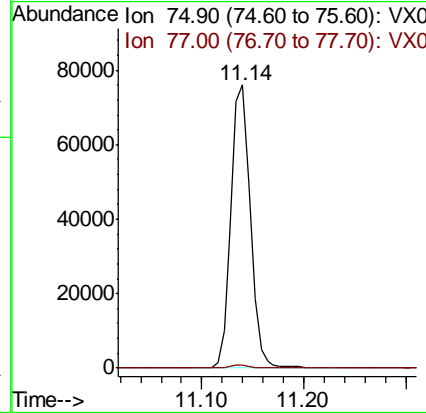
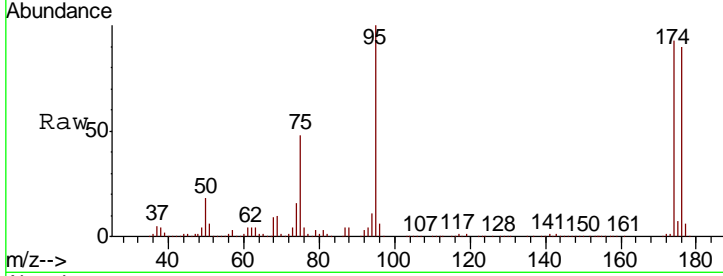




#76  
 1,2,3-Trichloropropane  
 Concen: 21.183 ug/l  
 RT: 11.14 min Scan# 1638  
 Delta R.T. -0.16 min  
 Lab File: VX004793.D  
 Acq: 28 Sep 2018 00:37

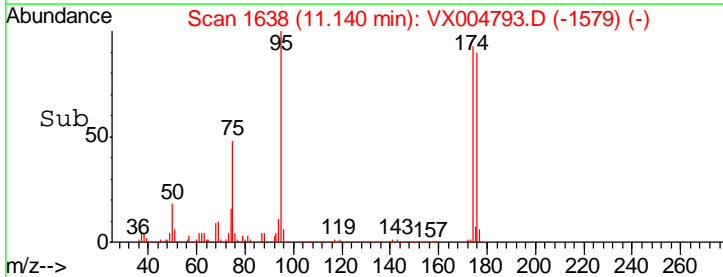
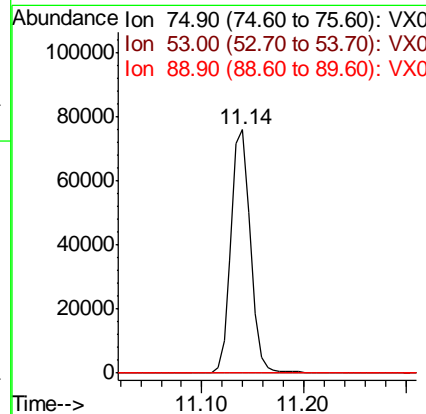
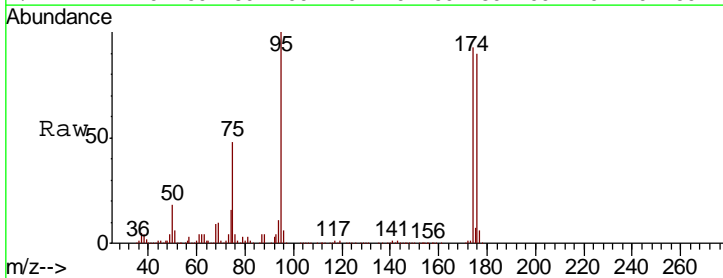
Instrument :  
 MSVOA\_X  
 ClientSampled :  
 CMT-18-2-SEP18

Tgt Ion: 75 Resp: 100287  
 Ion Ratio Lower Upper  
 75 100  
 77 1.1 20.2 60.6#

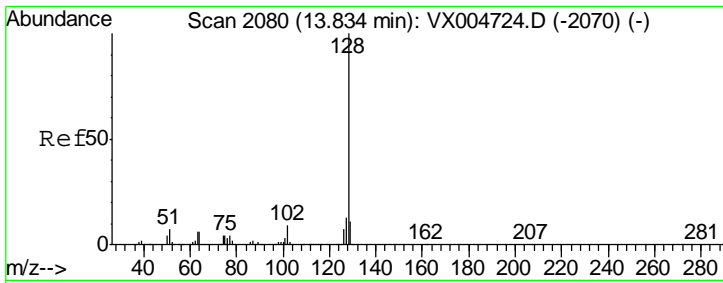


#81  
 trans-1,4-Dichloro-2-butene  
 Concen: 57.466 ug/l  
 RT: 11.14 min Scan# 1638  
 Delta R.T. 0.06 min  
 Lab File: VX004793.D  
 Acq: 28 Sep 2018 00:37

Tgt Ion: 75 Resp: 100287  
 Ion Ratio Lower Upper  
 75 100  
 53 0.2 80.1 120.1#  
 89 0.0 37.2 55.8#







#95  
 Naphthalene  
 Concen: 0.756 ug/l  
 RT: 13.83 min Scan# 2080  
 Delta R.T. 0.00 min  
 Lab File: VX004793.D  
 Acq: 28 Sep 2018 00:37

**Instrument :**  
 MSVOA\_X  
**ClientSampled :**  
 CMT-18-2-SEP18

Tot Ion	Ratio	Lower	Upper
128	100		
127	11.8	10.2	15.2
129	0.0	8.6	12.8#

