

Data Path : Z:\VOASRV\HPCHEM1\MSVOA X\DATA\VX092718\
 Data File : VX004806.D
 Acq On : 28 Sep 2018 06:24
 Operator : JC/MD
 Sample : J5033-09
 Misc : 5.0mL/MSVOA X/WATER
 ALS Vial : 47 Sample Multiplier: 1

Instrument :
 MSVOA_X
 ClientSampleId :
 BP-TT-SW4004-20180918

Quant Time: Sep 28 08:24:58 2018
 Quant Method : Z:\VOASRV\HPCHEM1\MSVOA_X\METHOD\82X092618W.M
 Quant Title : SW846 8260
 QLast Update : Wed Sep 26 14:17:02 2018
 Response via : Initial Calibration

Internal Standards	R.T.	QIon	Response	Conc	Units	Dev(Min)
1) Pentafluorobenzene	5.66	168	231919	50.00	ug/l	0.00
34) 1,4-Difluorobenzene	6.86	114	363671	50.00	ug/l	0.00
63) Chlorobenzene-d5	10.12	117	361851	50.00	ug/l	0.00
72) 1,4-Dichlorobenzene-d4	12.08	152	203596	50.00	ug/l	0.00

System Monitoring Compounds

33) 1,2-Dichloroethane-d4	6.07	65	182166	54.99	ug/l	0.00
Spiked Amount	50.000		Recovery	=	109.98%	
35) Dibromofluoromethane	5.50	113	149514	48.51	ug/l	0.00
Spiked Amount	50.000		Recovery	=	97.02%	
50) Toluene-d8	8.71	98	539536	52.66	ug/l	0.00
Spiked Amount	50.000		Recovery	=	105.32%	
62) 4-Bromofluorobenzene	11.14	95	193533	52.43	ug/l	0.00
Spiked Amount	50.000		Recovery	=	104.86%	

Target Compounds

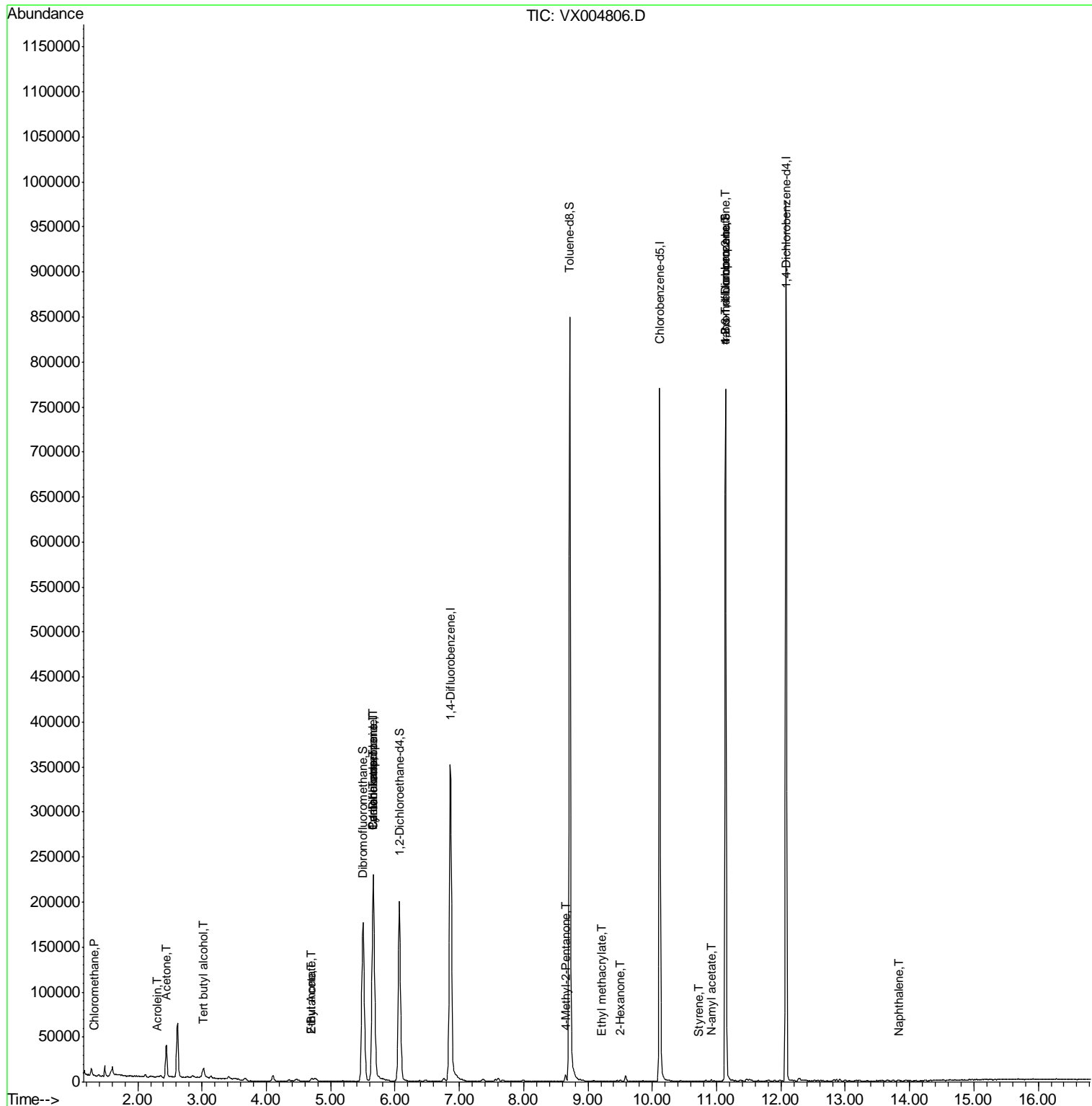
					Qvalue	
3) Chloromethane	1.32	50	885	0.231	ug/l #	65
11) Tert butyl alcohol	3.02	59	7409	7.998	ug/l #	79
13) Acrolein	2.29	56	746	1.132	ug/l	84
16) Acetone	2.45	43	40712	21.049	ug/l	94
20) Methylene Chloride	2.86	84	852	Below Cal	#	91
25) 2-Butanone	4.70	43	5193	1.821	ug/l #	88
31) Cyclohexane	5.65	56	4349	1.032	ug/l #	1
36) 1,1-Dichloropropene	5.66	75	15921	3.786	ug/l #	41
37) Ethyl Acetate	4.70	43	5193	0.930	ug/l #	68
38) Carbon Tetrachloride	5.66	117	21178	4.791	ug/l #	16
51) 4-Methyl-2-Pentanone	8.65	43	4685	0.924	ug/l	88
56) Ethyl methacrylate	9.22	69	23	2.866	ug/l #	1
59) 2-Hexanone	9.51	43	854	0.202	ug/l	69
70) Styrene	10.71	104	61	2.146	ug/l #	27
74) N-amyl acetate	10.91	43	251	1.782	ug/l #	22
76) 1,2,3-Trichloropropane	11.14	75	96371	21.119	ug/l #	37
80) 1,3,5-Trimethylbenzene	11.51	105	703	Below Cal		87
81) trans-1,4-Dichloro-2-buten	11.14	75	96371	57.296	ug/l #	10
84) 1,2,4-Trimethylbenzene	11.81	105	349	Below Cal	#	30
95) Naphthalene	13.84	128	275	0.735	ug/l #	88

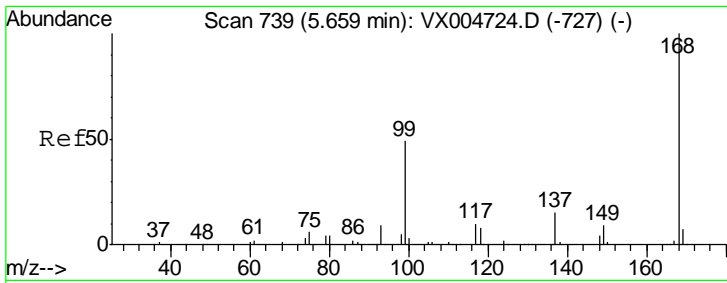
(#) = qualifier out of range (m) = manual integration (+) = signals summed

Data Path : Z:\VOASRV\HPCHEM1\MSVOA X\DATA\VX092718\
 Data File : VX004806.D
 Acq On : 28 Sep 2018 06:24
 Operator : JC/MD
 Sample : J5033-09
 Misc : 5.0mL/MSVOA X/WATER
 ALS Vial : 47 Sample Multiplier: 1

Instrument :
 MSVOA_X
 Client Sampled :
 BP-TT-SW4004-20180918

Quant Time: Sep 28 08:24:58 2018
 Quant Method : Z:\VOASRV\HPCHEM1\MSVOA_X\METHOD\82X092618W.M
 Quant Title : SW846 8260
 QLast Update : Wed Sep 26 14:17:02 2018
 Response via : Initial Calibration

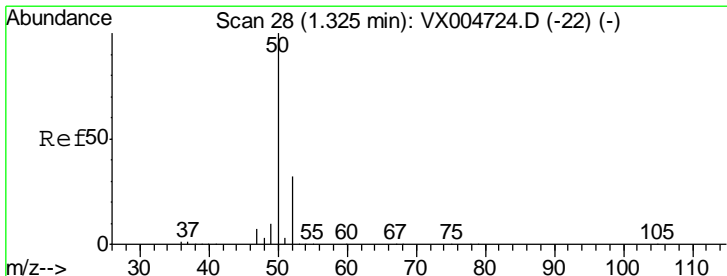
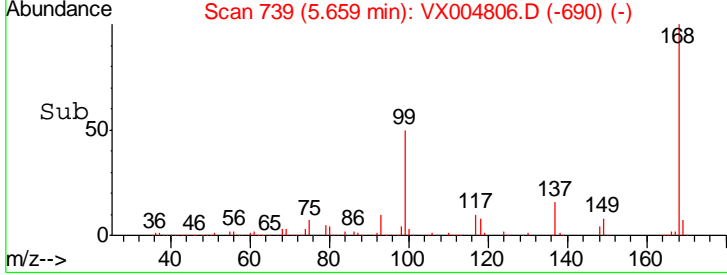
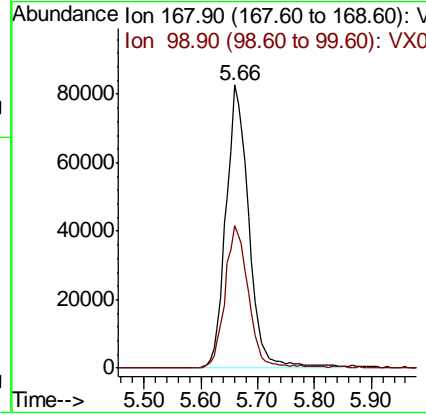
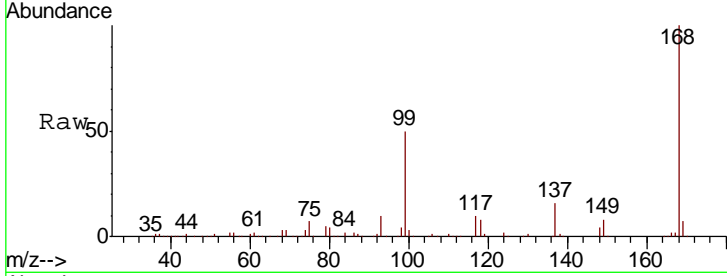




#1
 Pentafluorobenzene
 Concen: 50.000 ug/l
 RT: 5.66 min Scan# 739
 Delta R.T. 0.00 min
 Lab File: VX004806.D
 Acq: 28 Sep 2018 06:24

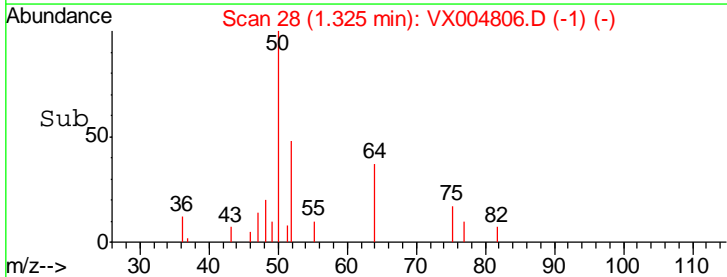
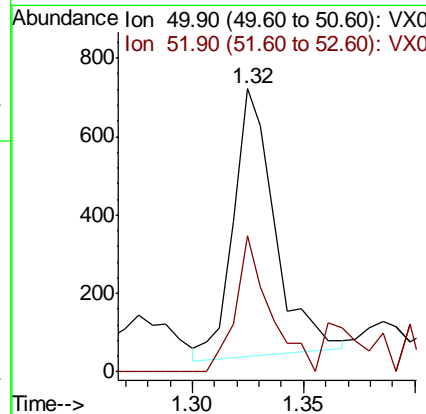
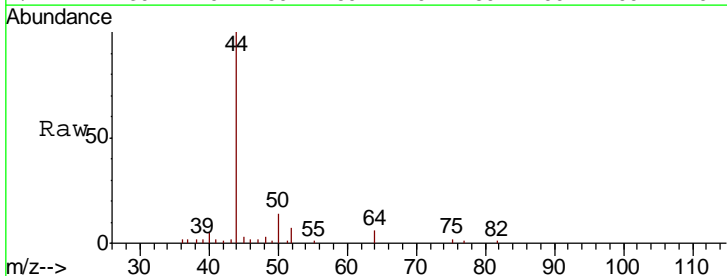
Instrument : MSVOA_X
 ClientSampleID : BP-TT-SW4004-20180918

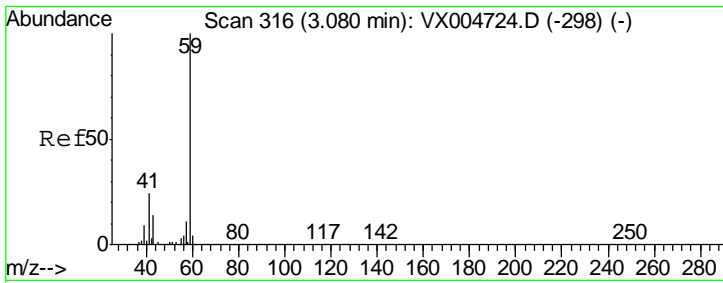
Tgt Ion: 168 Resp: 231919
 Ion Ratio Lower Upper
 168 100
 99 50.2 39.9 59.9



#3
 Chloromethane
 Concen: 0.231 ug/l
 RT: 1.32 min Scan# 28
 Delta R.T. 0.00 min
 Lab File: VX004806.D
 Acq: 28 Sep 2018 06:24

Tgt Ion: 50 Resp: 885
 Ion Ratio Lower Upper
 50 100
 52 52.5 26.2 39.2#

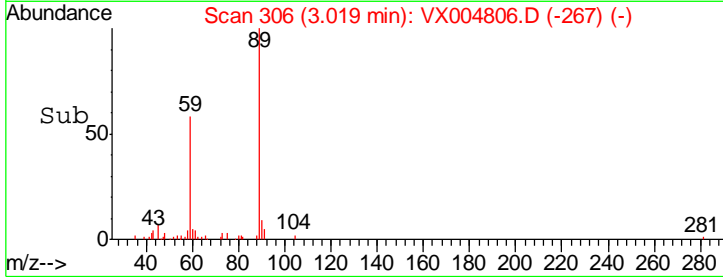
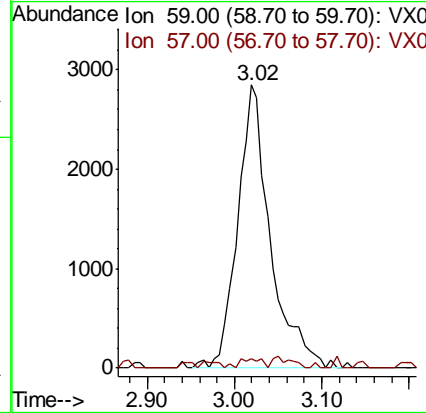
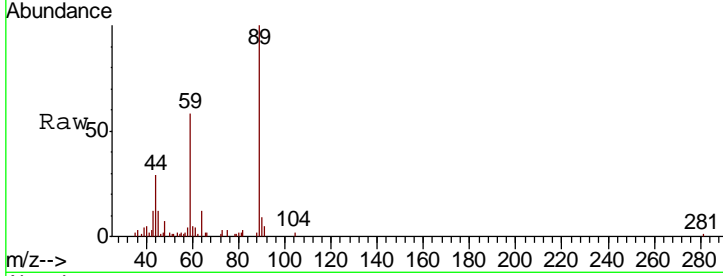




#11
 Tert butyl alcohol
 Concen: 7.998 ug/l
 RT: 3.02 min Scan# 306
 Delta R.T. -0.06 min
 Lab File: VX004806.D
 Acq: 28 Sep 2018 06:24

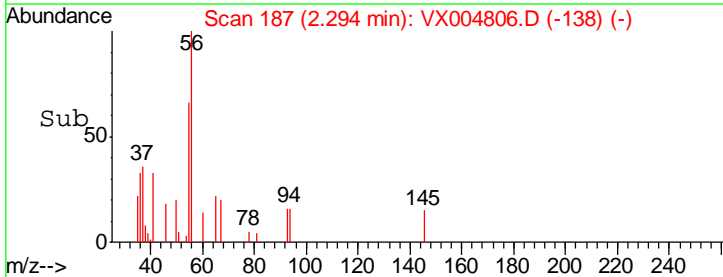
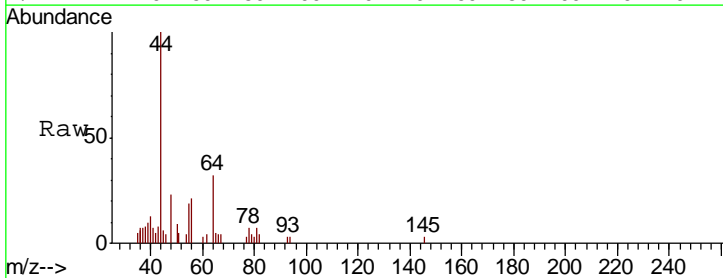
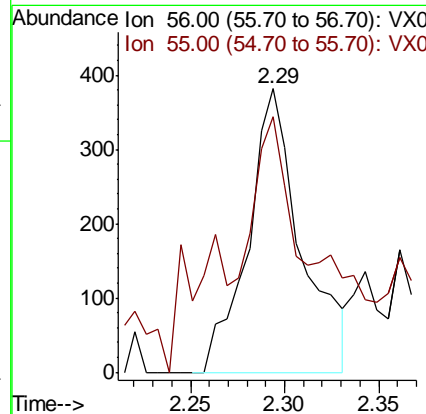
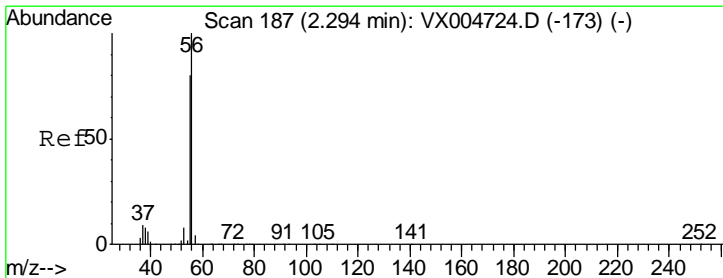
Instrument :
 MSVOA_X
 ClientSampled :
 BP-TT-SW4004-20180918

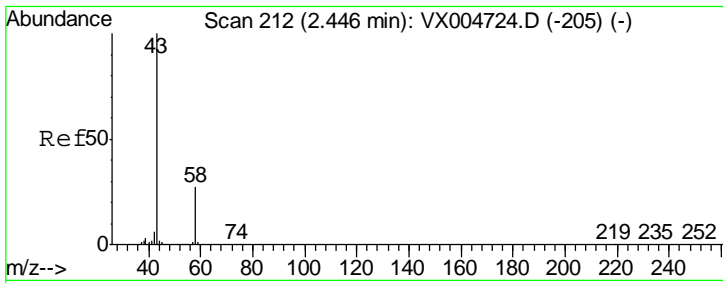
Tgt Ion: 59 Resp: 7409
 Ion Ratio Lower Upper
 59 100
 57 2.4 8.2 12.4#



#13
 Acrolein
 Concen: 1.132 ug/l
 RT: 2.29 min Scan# 187
 Delta R.T. 0.00 min
 Lab File: VX004806.D
 Acq: 28 Sep 2018 06:24

Tgt Ion: 56 Resp: 746
 Ion Ratio Lower Upper
 56 100
 55 81.6 54.7 82.1

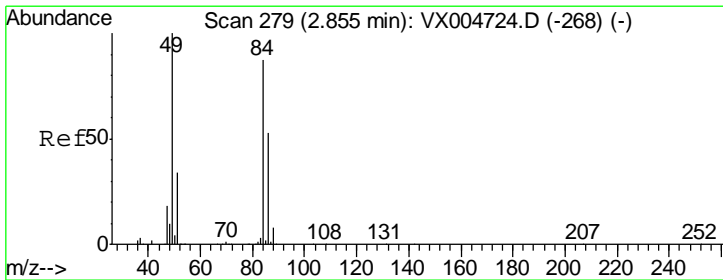
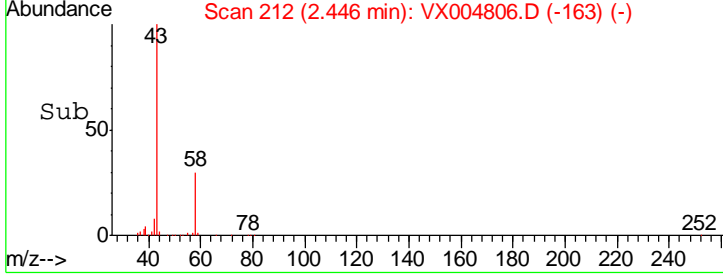
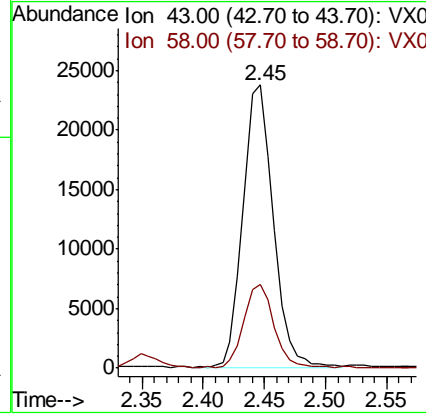
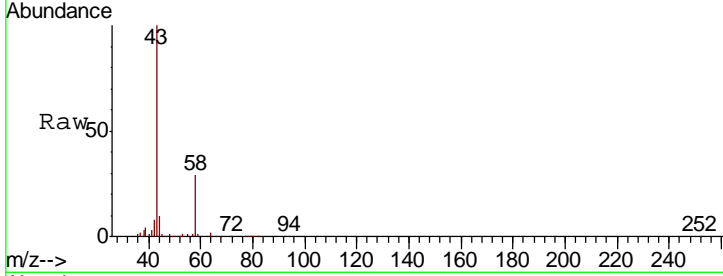




#16
 Acetone
 Concen: 21.049 ug/l
 RT: 2.45 min Scan# 212
 Delta R.T. 0.00 min
 Lab File: VX004806.D
 Acq: 28 Sep 2018 06:24

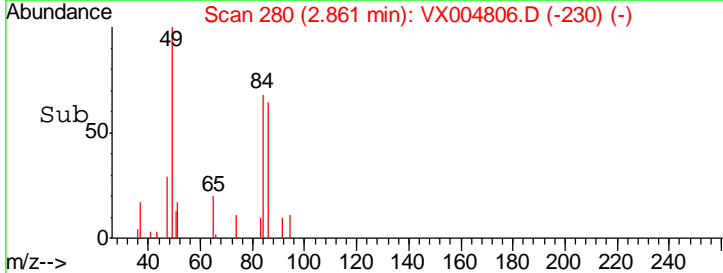
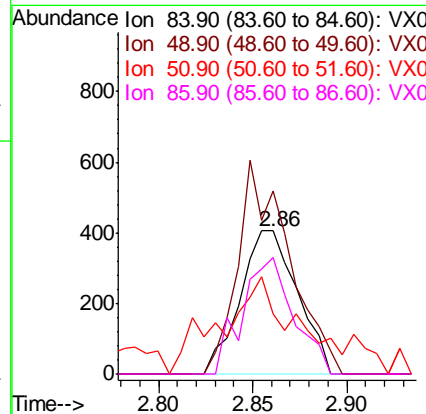
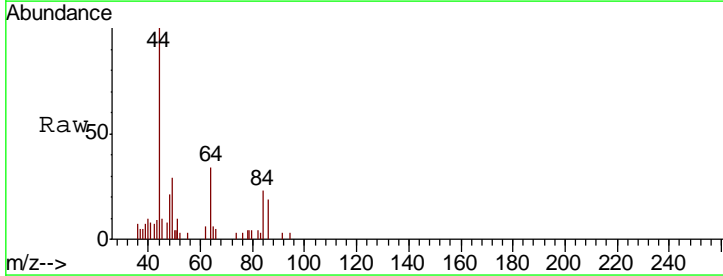
Instrument :
 MSVOA_X
ClientSampled :
 BP-TT-SW4004-20180918

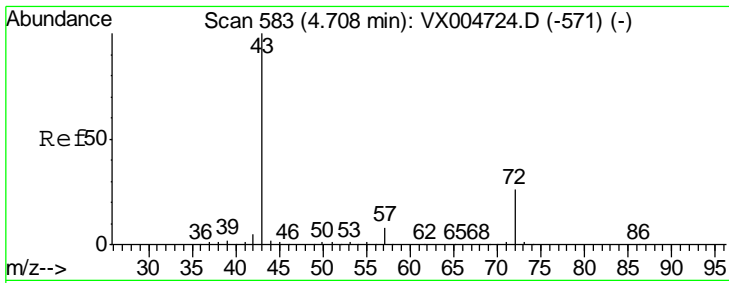
Tgt Ion	Resp	Lower	Upper
43	40712		
58	29.6	26.2	39.4



#20
 Methylene Chloride
 Concen: Below Cal
 RT: 2.86 min Scan# 280
 Delta R.T. 0.01 min
 Lab File: VX004806.D
 Acq: 28 Sep 2018 06:24

Tgt Ion	Resp	Lower	Upper
84	852		
49	127.8	101.2	151.8
51	28.1	29.5	44.3#
86	81.3	52.3	78.5#

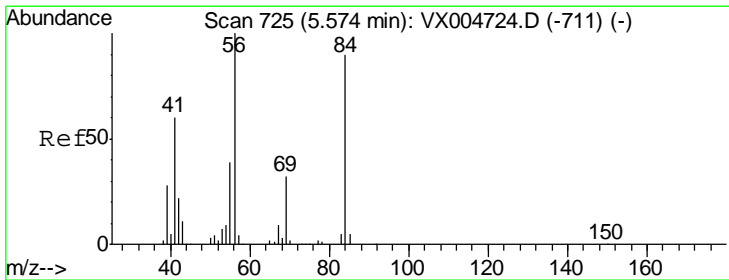
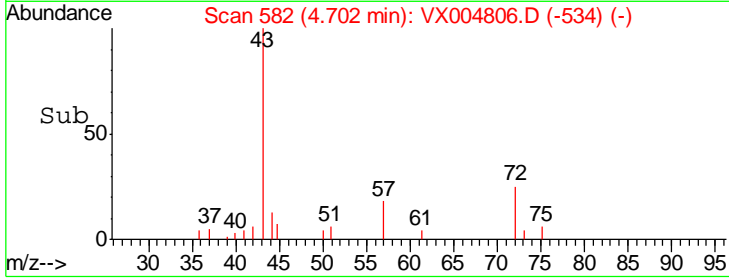
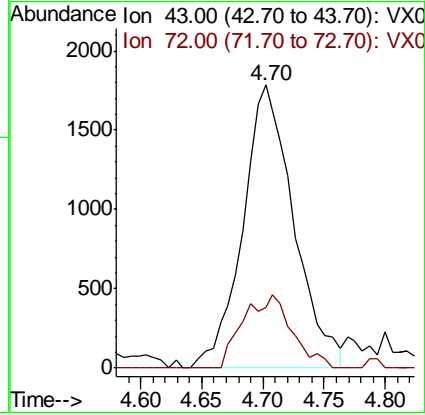
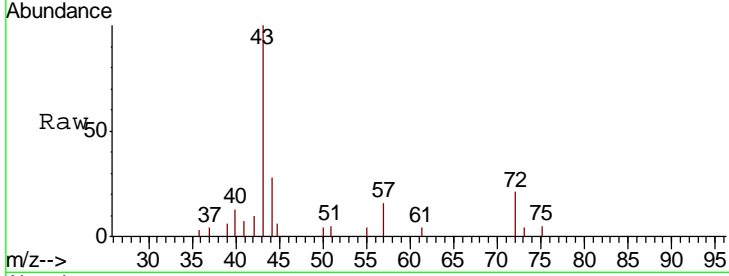




#25
 2-Butanone
 Concen: 1.821 ug/l
 RT: 4.70 min Scan# 582
 Delta R.T. -0.01 min
 Lab File: VX004806.D
 Acq: 28 Sep 2018 06:24

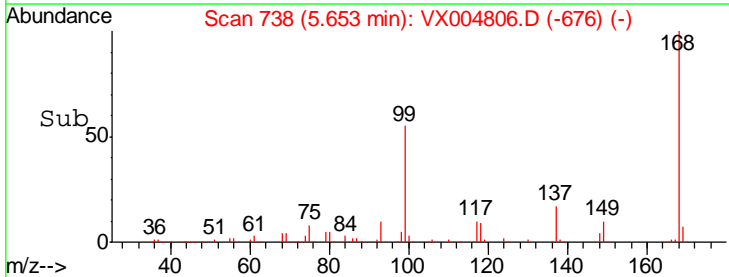
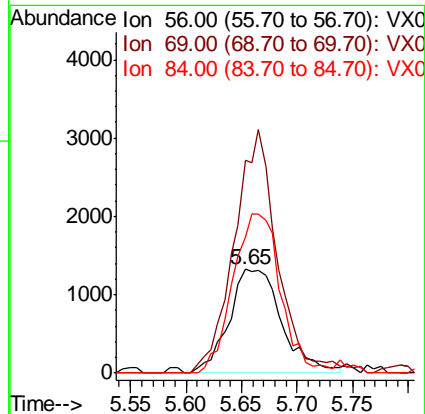
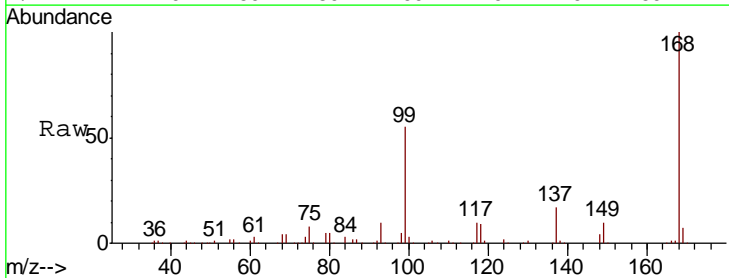
Instrument :
 MSVOA_X
 ClientSampleId :
 BP-TT-SW4004-20180918

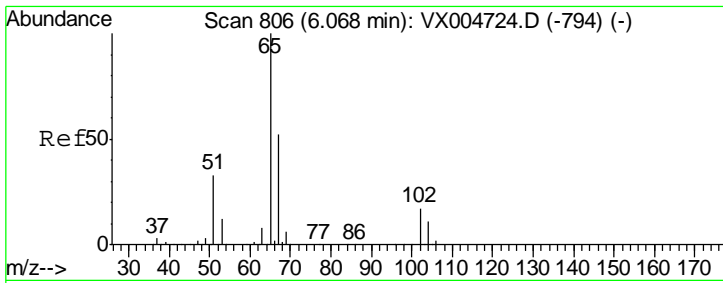
Tgt Ion: 43 Resp: 5193
 Ion Ratio Lower Upper
 43 100
 72 21.4 22.0 33.0#



#31
 Cyclohexane
 Concen: 1.032 ug/l
 RT: 5.65 min Scan# 738
 Delta R.T. 0.08 min
 Lab File: VX004806.D
 Acq: 28 Sep 2018 06:24

Tgt Ion: 56 Resp: 4349
 Ion Ratio Lower Upper
 56 100
 69 205.0 25.4 38.2#
 84 131.0 71.4 107.2#

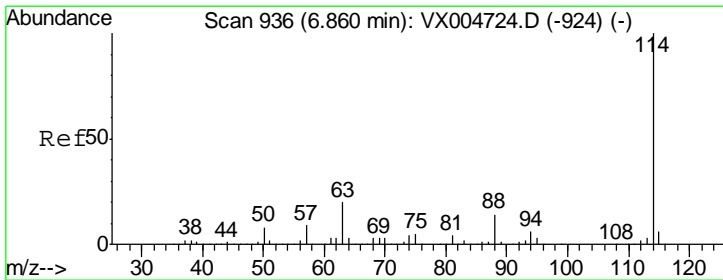
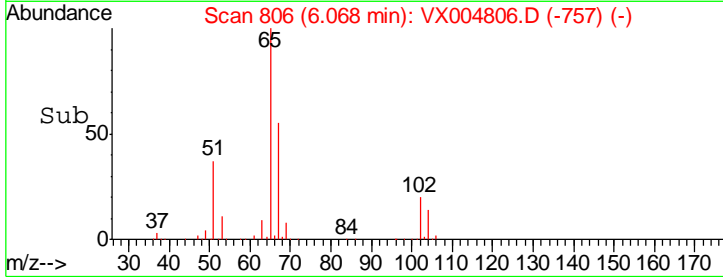
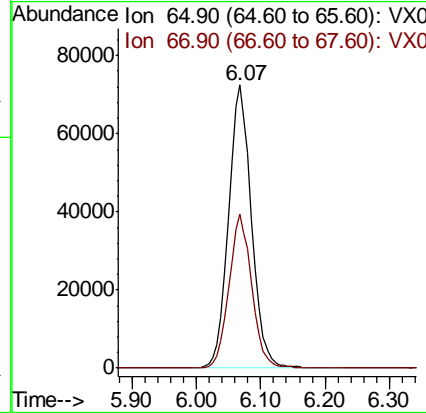
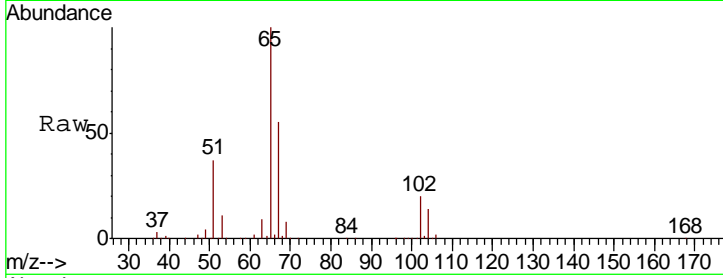




#33
 1,2-Dichloroethane-d4
 Concen: 54.986 ug/l
 RT: 6.07 min Scan# 806
 Delta R.T. 0.00 min
 Lab File: VX004806.D
 Acq: 28 Sep 2018 06:24

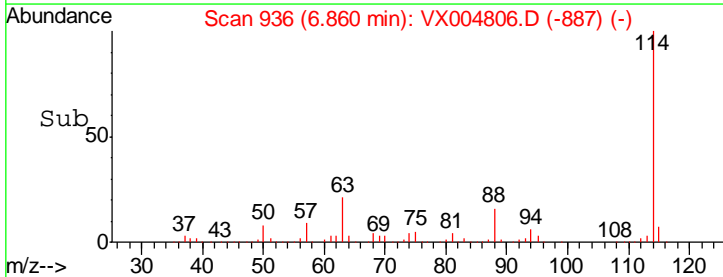
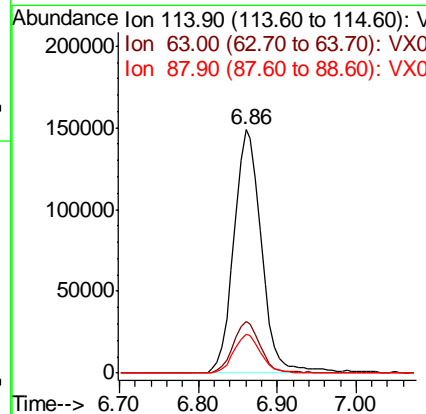
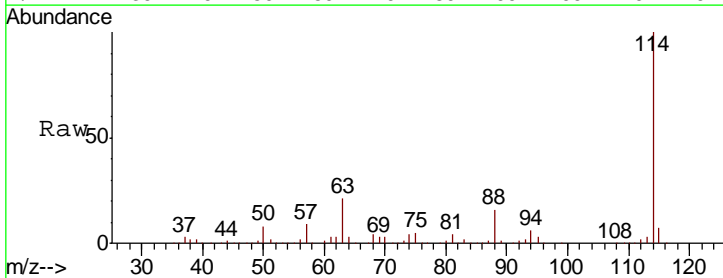
Instrument :
 MSVOA_X
 ClientSampled :
 BP-TT-SW4004-20180918

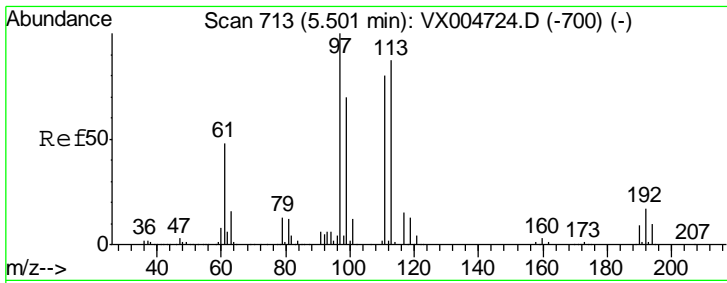
Tgt Ion	Resp	Lower	Upper
65	182166		
67	54.1	0.0	106.8



#34
 1,4-Difluorobenzene
 Concen: 50.000 ug/l
 RT: 6.86 min Scan# 936
 Delta R.T. 0.00 min
 Lab File: VX004806.D
 Acq: 28 Sep 2018 06:24

Tgt Ion	Resp	Lower	Upper
114	363671		
63	21.3	0.0	39.0
88	16.0	0.0	30.4

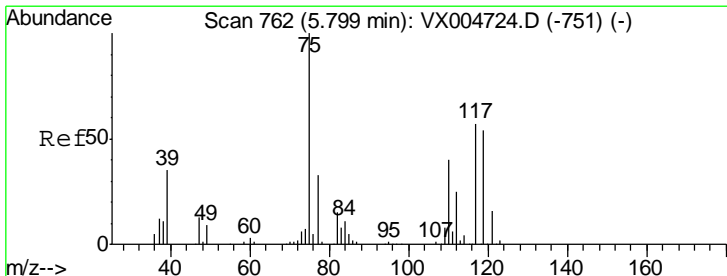
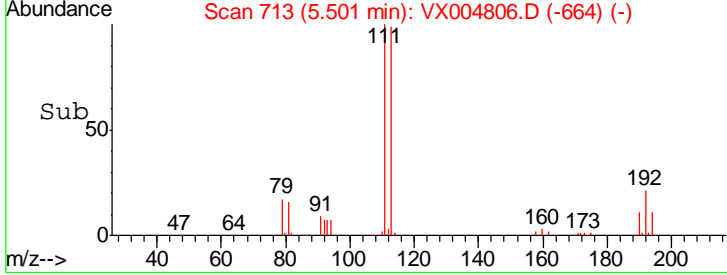
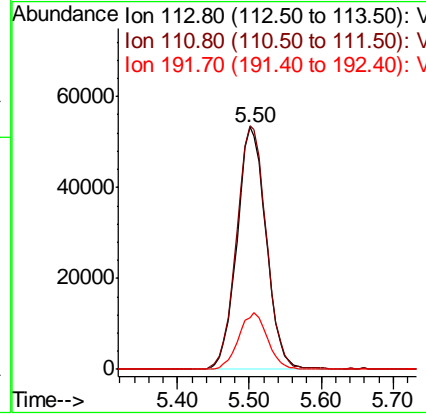
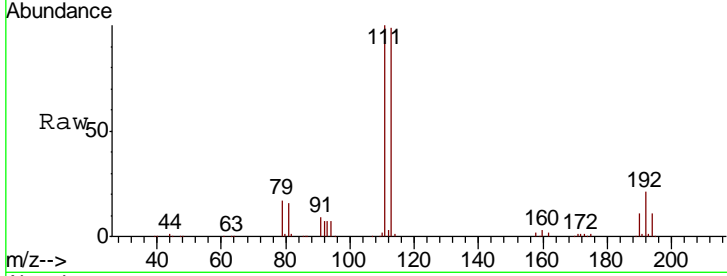




#35
 Dibromofluoromethane
 Concen: 48.509 ug/l
 RT: 5.50 min Scan# 713
 Delta R.T. 0.00 min
 Lab File: VX004806.D
 Acq: 28 Sep 2018 06:24

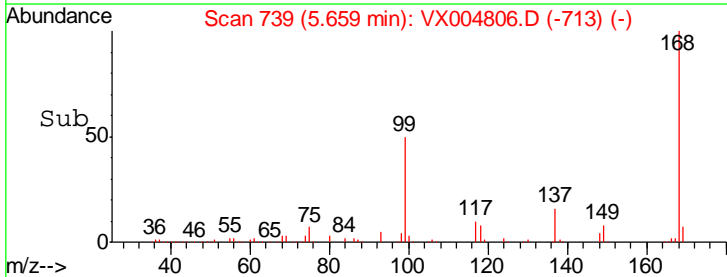
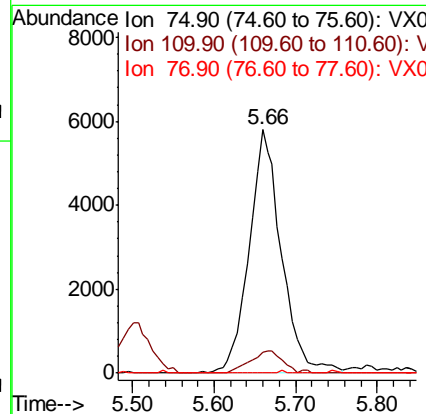
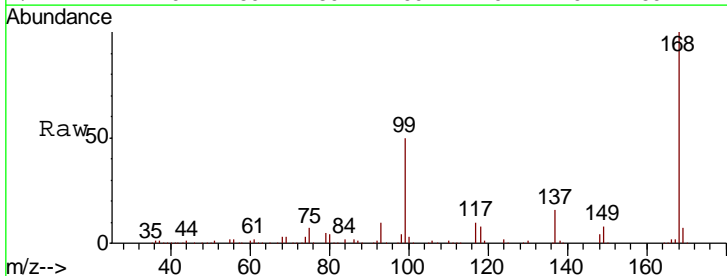
Instrument :
 MSVOA_X
 ClientSampled :
 BP-TT-SW4004-20180918

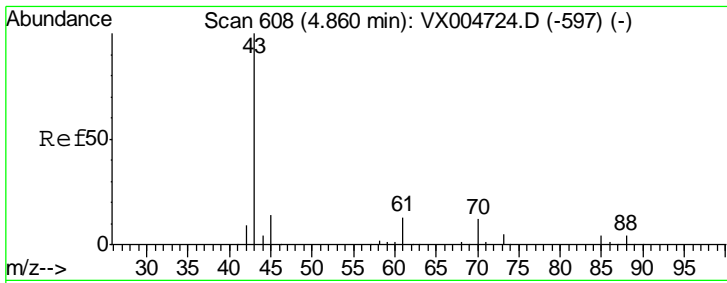
Tgt Ion	Resp	Lower	Upper
113	149514		
111	102.6	82.4	123.6
192	23.1	19.4	29.2



#36
 1,1-Dichloropropene
 Concen: 3.786 ug/l
 RT: 5.66 min Scan# 739
 Delta R.T. -0.14 min
 Lab File: VX004806.D
 Acq: 28 Sep 2018 06:24

Tgt Ion	Resp	Lower	Upper
75	15921		
110	0.0	18.0	54.0#
77	0.0	24.6	36.8#

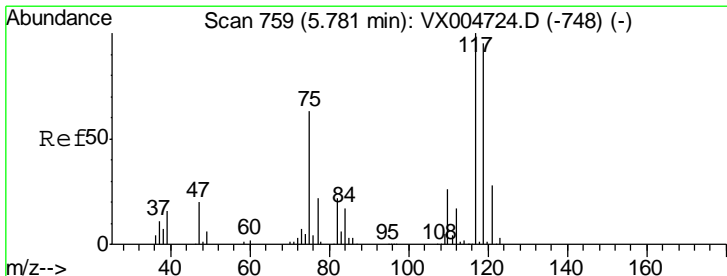
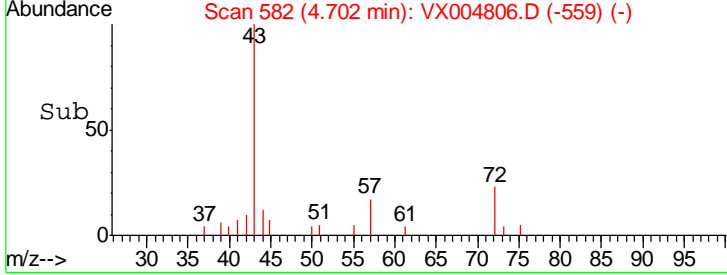
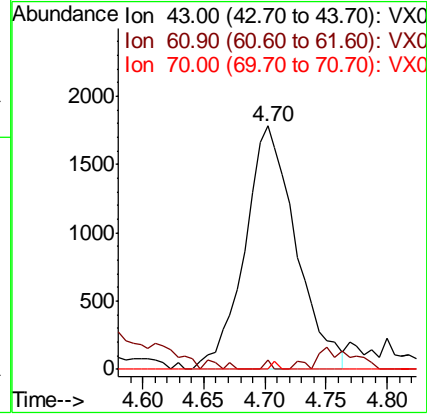
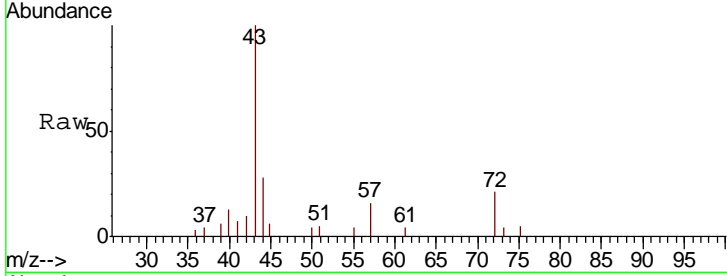




#37
 Ethyl Acetate
 Concen: 0.930 ug/l
 RT: 4.70 min Scan# 582
 Delta R.T. -0.16 min
 Lab File: VX004806.D
 Acq: 28 Sep 2018 06:24

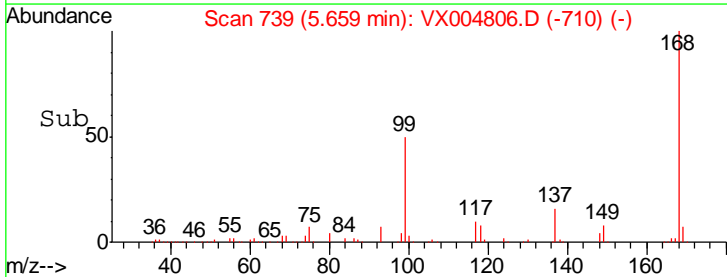
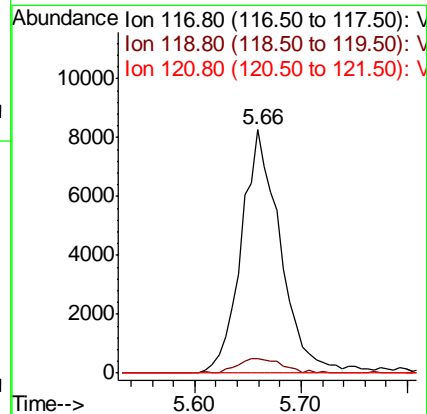
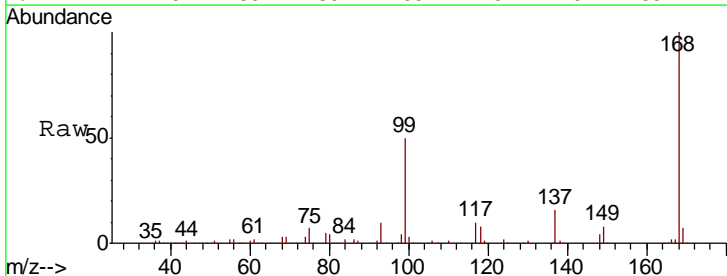
Instrument :
 MSVOA_X
 ClientSampleId :
 BP-TT-SW4004-20180918

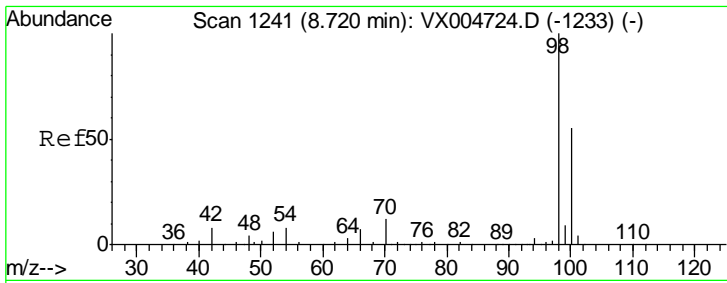
Tgt Ion	Resp	Lower	Upper
43	5193		
61	0.5	11.5	17.3#
70	0.4	9.0	13.6#



#38
 Carbon Tetrachloride
 Concen: 4.791 ug/l
 RT: 5.66 min Scan# 739
 Delta R.T. -0.12 min
 Lab File: VX004806.D
 Acq: 28 Sep 2018 06:24

Tgt Ion	Resp	Lower	Upper
117	21178		
119	6.2	78.8	118.2#
121	0.0	24.9	37.3#

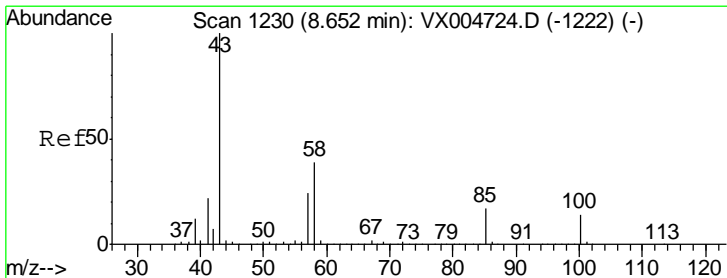
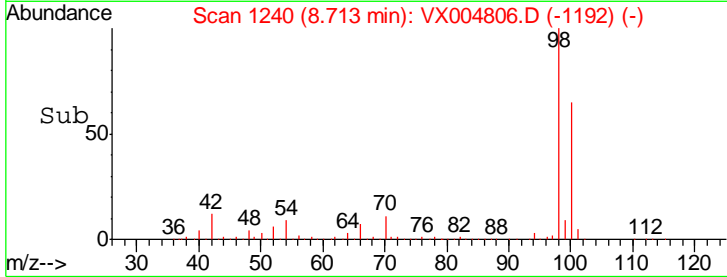
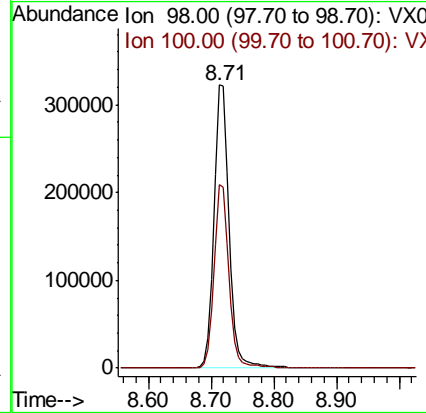
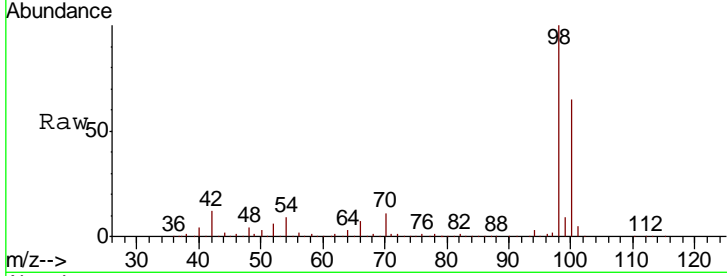




#50
 Toluene-d8
 Concen: 52.655 ug/l
 RT: 8.71 min Scan# 1240
 Delta R.T. -0.01 min
 Lab File: VX004806.D
 Acq: 28 Sep 2018 06:24

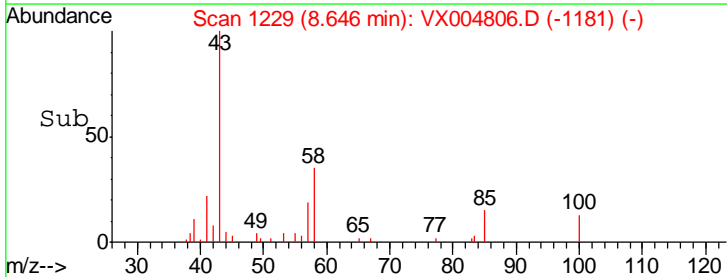
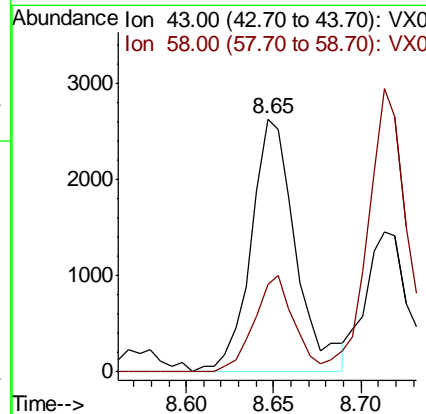
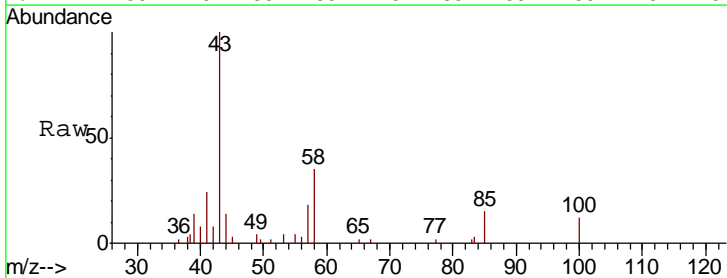
Instrument :
 MSVOA_X
 ClientSampled :
 BP-TT-SW4004-20180918

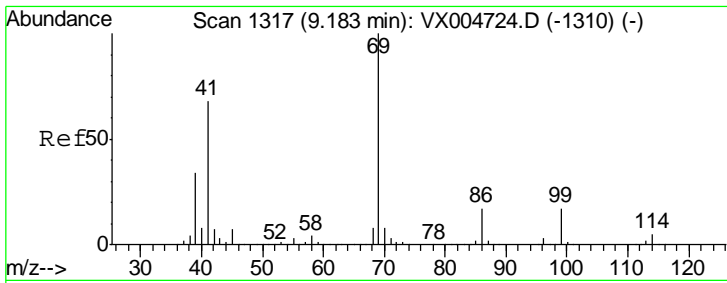
Tgt Ion: 98 Resp: 539536
 Ion Ratio Lower Upper
 98 100
 100 63.6 52.9 79.3



#51
 4-Methyl-2-Pentanone
 Concen: 0.924 ug/l
 RT: 8.65 min Scan# 1229
 Delta R.T. -0.01 min
 Lab File: VX004806.D
 Acq: 28 Sep 2018 06:24

Tgt Ion: 43 Resp: 4685
 Ion Ratio Lower Upper
 43 100
 58 33.8 33.1 49.7

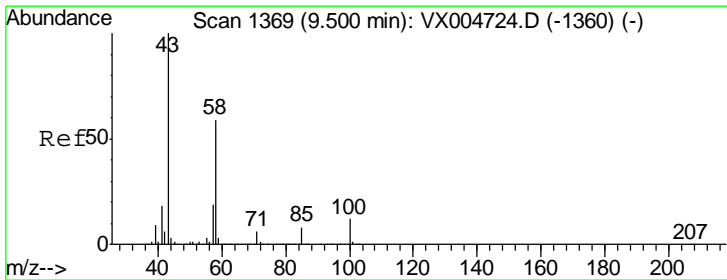
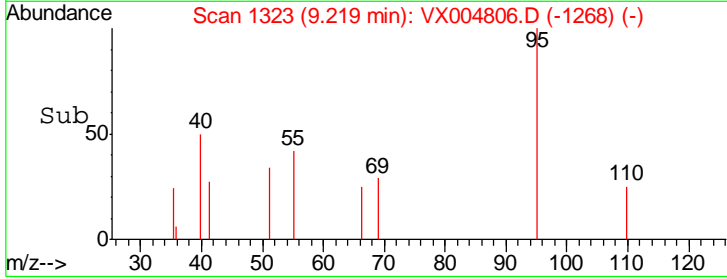
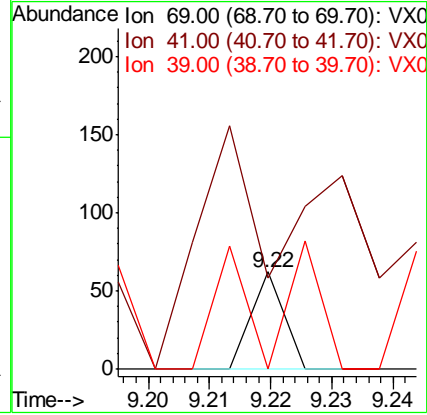
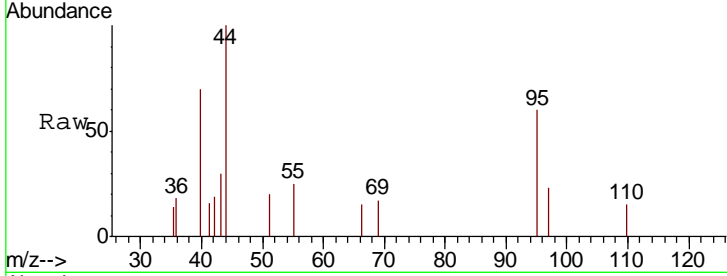




#56
Ethyl methacrylate
Concen: 2.866 ug/l
RT: 9.22 min Scan# 1323
Delta R.T. 0.04 min
Lab File: VX004806.D
Acq: 28 Sep 2018 06:24

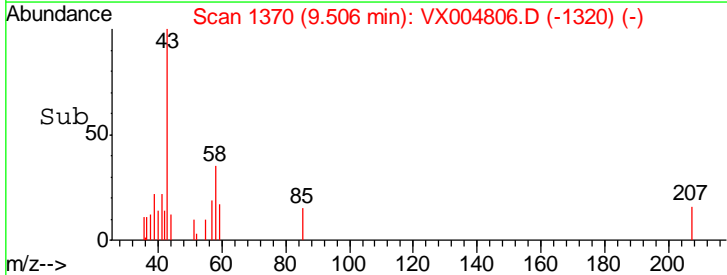
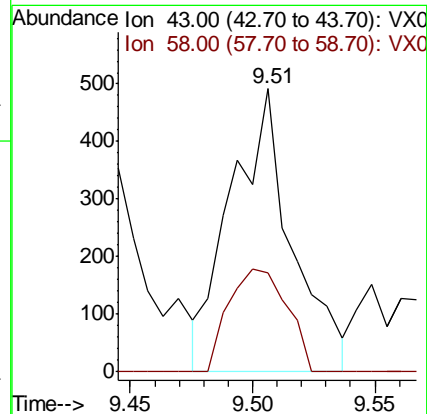
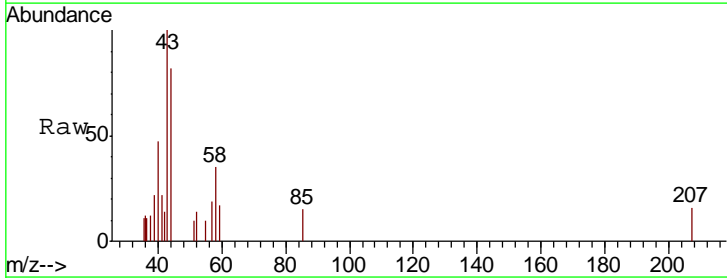
Instrument :
MSVOA_X
ClientSampled :
BP-TT-SW4004-20180918

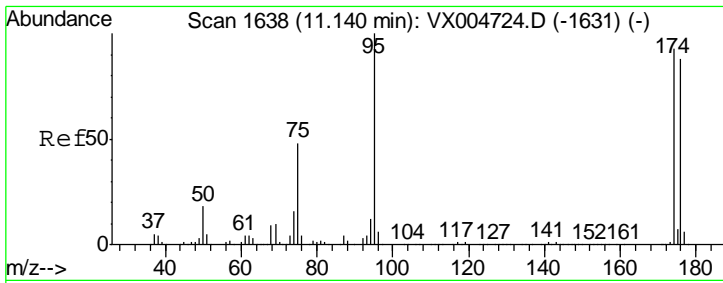
Tgt Ion	Resp	Lower	Upper
69	100		
41	556.5	51.0	76.4#
39	256.5	26.1	39.1#



#59
2-Hexanone
Concen: 0.202 ug/l
RT: 9.51 min Scan# 1370
Delta R.T. 0.01 min
Lab File: VX004806.D
Acq: 28 Sep 2018 06:24

Tgt Ion	Resp	Lower	Upper
43	100		
58	34.9	29.0	87.0

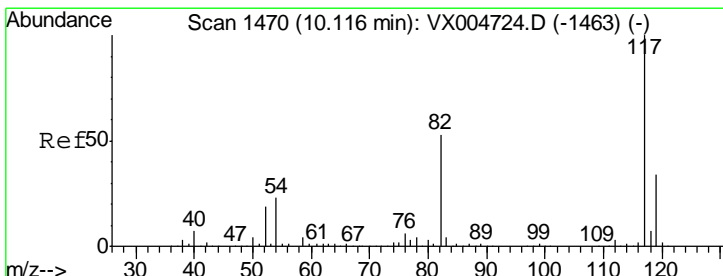
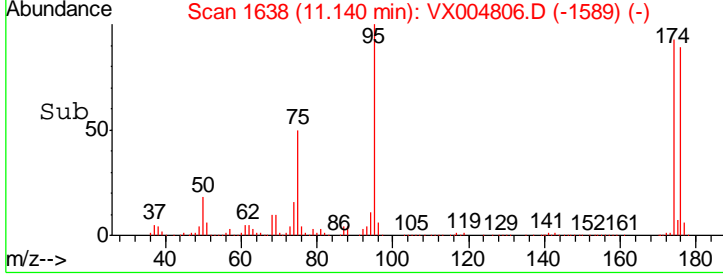
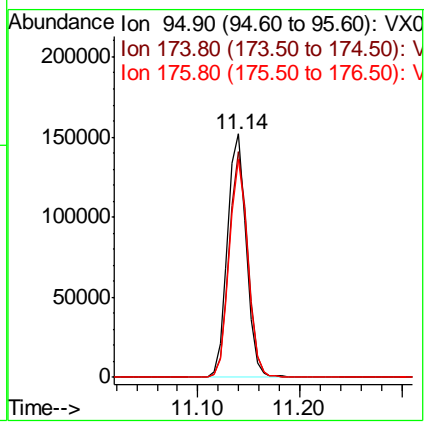
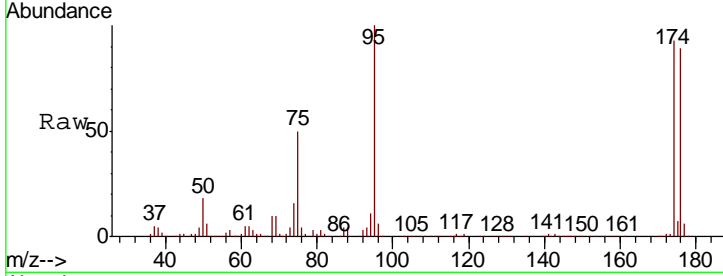




#62
 4-Bromofluorobenzene
 Concen: 52.428 ug/l
 RT: 11.14 min Scan# 1638
 Delta R.T. 0.00 min
 Lab File: VX004806.D
 Acq: 28 Sep 2018 06:24

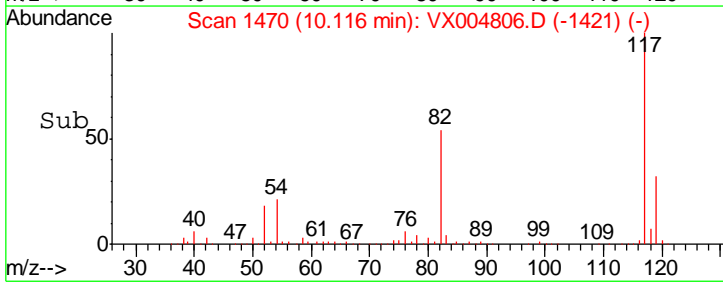
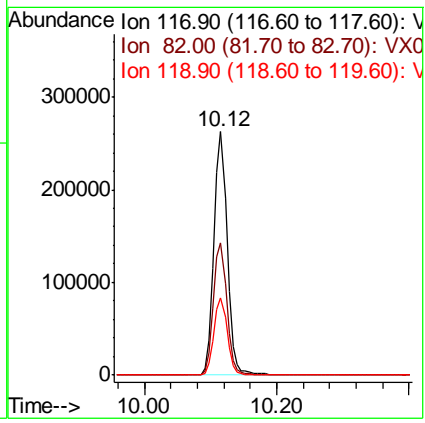
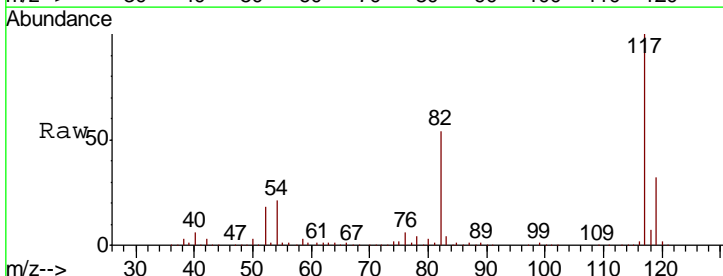
Instrument : MSVOA_X
 ClientSampled : BP-TT-SW4004-20180918

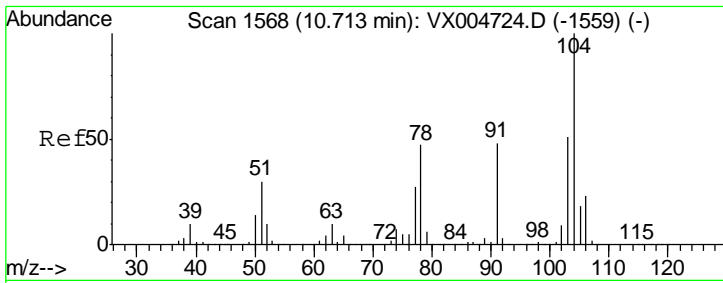
Tgt Ion	Resp	Lower	Upper
95	193533		
174	92.0	0.0	185.2
176	88.4	0.0	178.6



#63
 Chlorobenzene-d5
 Concen: 50.000 ug/l
 RT: 10.12 min Scan# 1470
 Delta R.T. 0.00 min
 Lab File: VX004806.D
 Acq: 28 Sep 2018 06:24

Tgt Ion	Resp	Lower	Upper
117	361851		
82	54.5	47.8	71.6
119	31.7	29.3	43.9

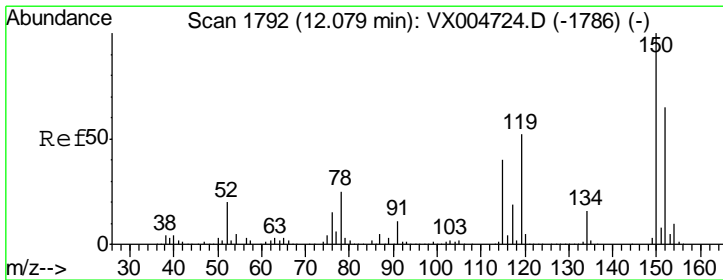
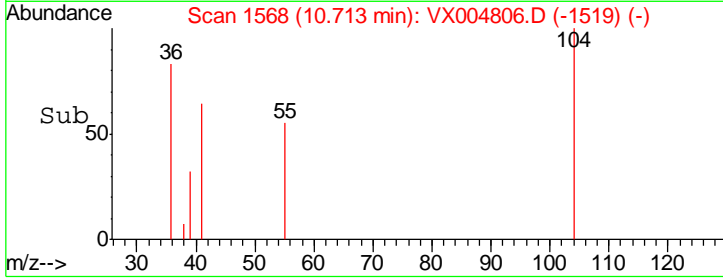
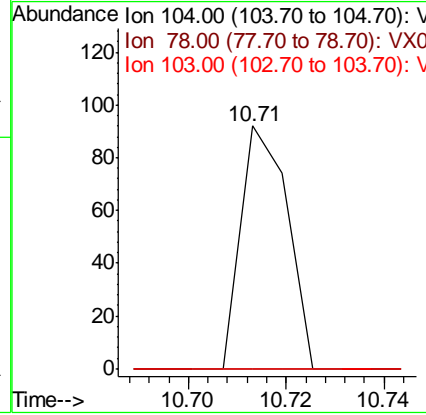
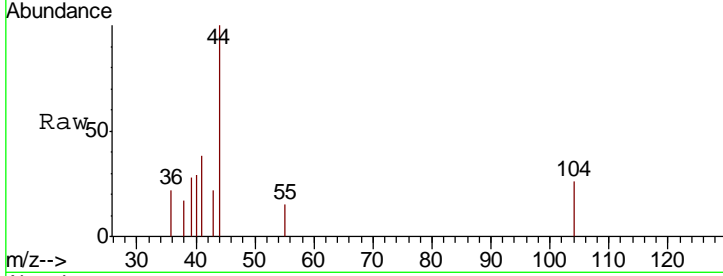




#70
 Styrene
 Concen: 2.146 ug/l
 RT: 10.71 min Scan# 1568
 Delta R.T. 0.00 min
 Lab File: VX004806.D
 Acq: 28 Sep 2018 06:24

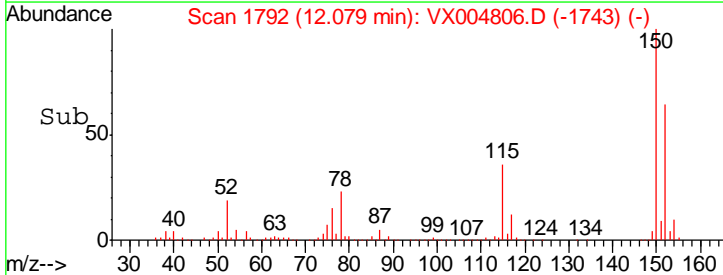
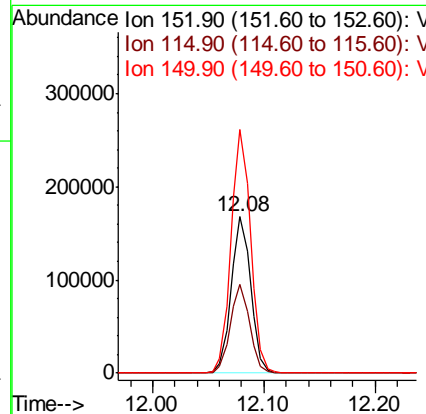
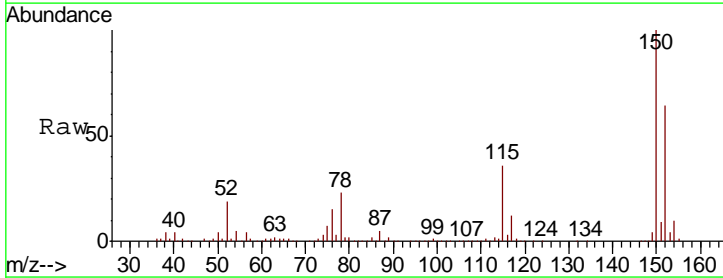
Instrument : MSVOA_X
 ClientSampled : BP-TT-SW4004-20180918

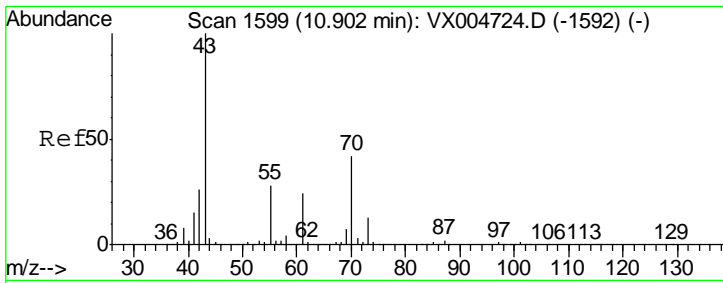
Tgt Ion	Resp	Lower	Upper
104	100		
78	0.0	37.4	56.0#
103	0.0	43.8	65.6#



#72
 1,4-Dichlorobenzene-d4
 Concen: 50.000 ug/l
 RT: 12.08 min Scan# 1792
 Delta R.T. 0.00 min
 Lab File: VX004806.D
 Acq: 28 Sep 2018 06:24

Tgt Ion	Resp	Lower	Upper
152	100		
115	55.7	39.0	117.0
150	156.1	0.0	351.0

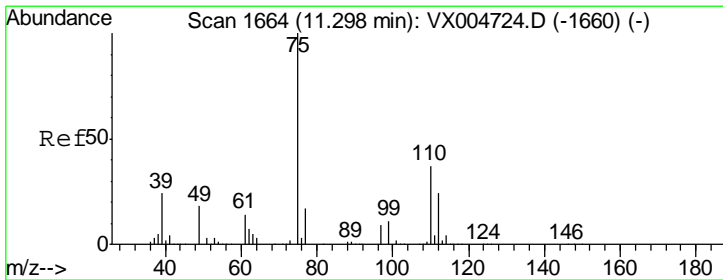
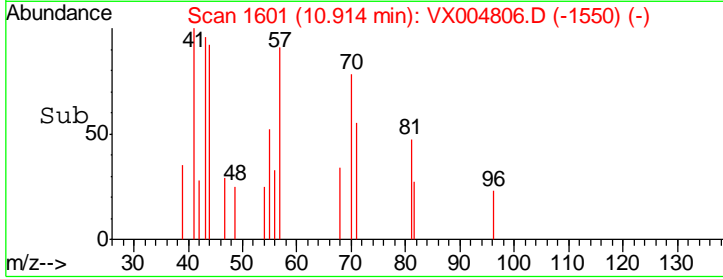
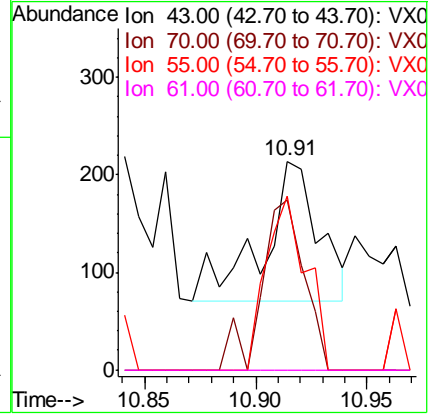
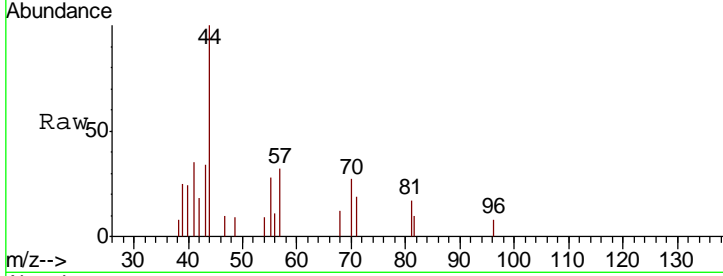




#74
 N-amyl acetate
 Concen: 1.782 ug/l
 RT: 10.91 min Scan# 1601
 Delta R.T. 0.01 min
 Lab File: VX004806.D
 Acq: 28 Sep 2018 06:24

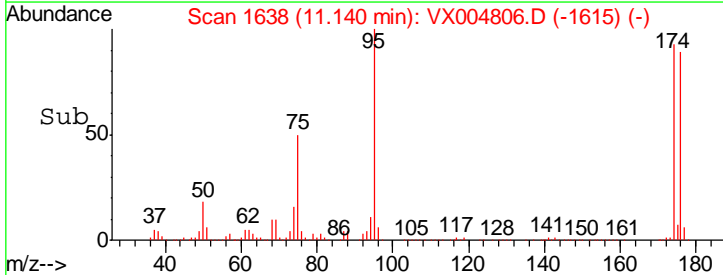
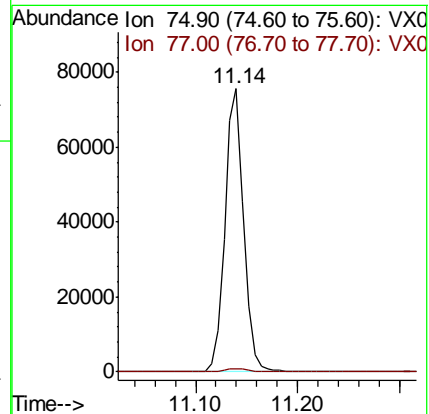
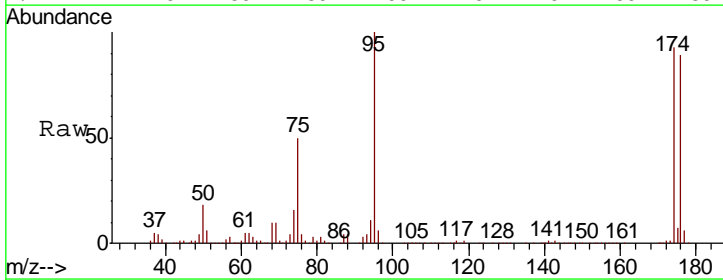
Instrument : MSVOA_X
 ClientSampled : BP-TT-SW4004-20180918

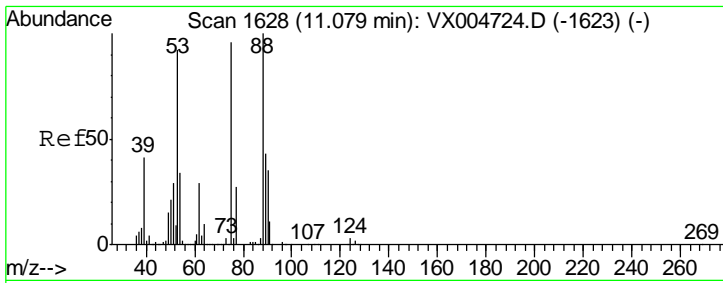
Tgt Ion	Resp	Lower	Upper
43	100		
70	92.4	37.4	56.0#
55	89.2	21.8	32.8#
61	0.0	20.6	30.8#



#76
 1,2,3-Trichloropropane
 Concen: 21.119 ug/l
 RT: 11.14 min Scan# 1638
 Delta R.T. -0.16 min
 Lab File: VX004806.D
 Acq: 28 Sep 2018 06:24

Tgt Ion	Resp	Lower	Upper
75	100		
77	1.4	20.2	60.6#

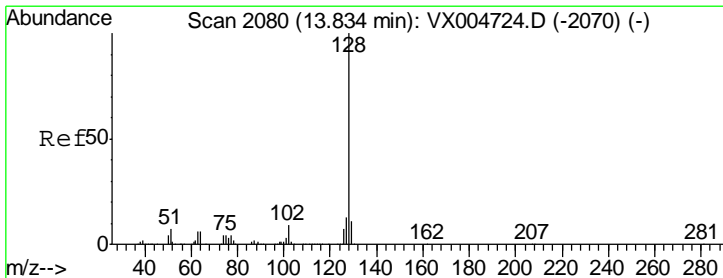
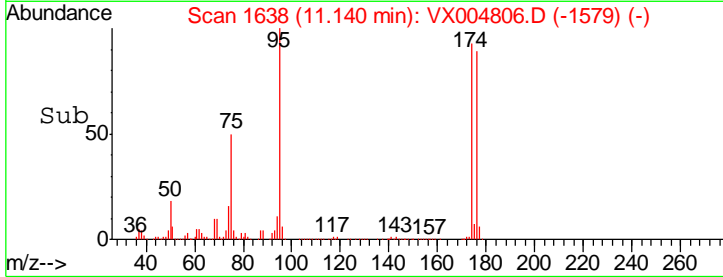
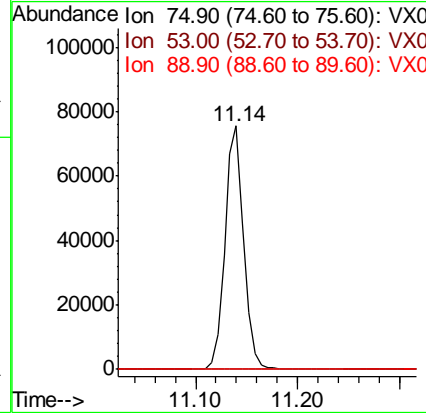
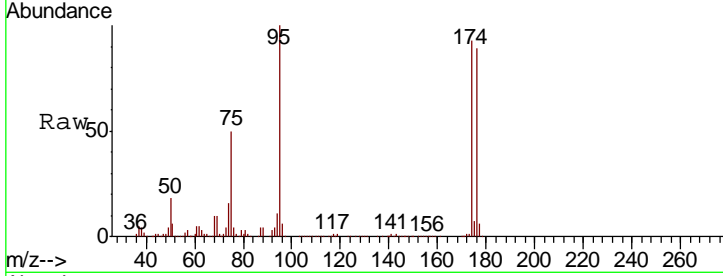




#81
 trans-1,4-Dichloro-2-butene
 Concen: 57.296 ug/l
 RT: 11.14 min Scan# 1638
 Delta R.T. 0.06 min
 Lab File: VX004806.D
 Acq: 28 Sep 2018 06:24

Instrument : MSVOA_X
 ClientSampled : BP-TT-SW4004-20180918

Tgt Ion	Resp	Lower	Upper
75	100		
53	0.5	80.1	120.1#
89	0.0	37.2	55.8#



#95
 Naphthalene
 Concen: 0.735 ug/l
 RT: 13.84 min Scan# 2081
 Delta R.T. 0.01 min
 Lab File: VX004806.D
 Acq: 28 Sep 2018 06:24

Tgt Ion	Resp	Lower	Upper
128	100		
127	6.9	10.2	15.2#
129	14.2	8.6	12.8#

