

Data Path : Z:\VOASRV\HPCHEM1\MSVOA X\DATA\VX092718\  
 Data File : VX004792.D  
 Acq On : 28 Sep 2018 00:10  
 Operator : JC/MD  
 Sample : J5048-15 20X  
 Misc : 5.0mL/MSVOA X/WATER  
 ALS Vial : 33 Sample Multiplier: 1

Instrument :  
 MSVOA\_X  
 ClientSampleId :  
 DMW-29A-SEP18

Quant Time: Sep 28 13:53:36 2018  
 Quant Method : Z:\VOASRV\HPCHEM1\MSVOA\_X\METHOD\82X092618W.M  
 Quant Title : SW846 8260  
 QLast Update : Wed Sep 26 14:17:02 2018  
 Response via : Initial Calibration

Internal Standards	R.T.	QIon	Response	Conc	Units	Dev(Min)
1) Pentafluorobenzene	5.67	168	236701	50.00	ug/l	0.00
34) 1,4-Difluorobenzene	6.86	114	389094	50.00	ug/l	0.00
63) Chlorobenzene-d5	10.12	117	384355	50.00	ug/l	0.00
72) 1,4-Dichlorobenzene-d4	12.08	152	217476	50.00	ug/l	0.00

## System Monitoring Compounds

33) 1,2-Dichloroethane-d4	6.07	65	183679	54.32	ug/l	0.00
Spiked Amount	50.000		Recovery	=	108.64%	
35) Dibromofluoromethane	5.50	113	156108	47.34	ug/l	0.00
Spiked Amount	50.000		Recovery	=	94.68%	
50) Toluene-d8	8.72	98	571171	52.10	ug/l	0.00
Spiked Amount	50.000		Recovery	=	104.20%	
62) 4-Bromofluorobenzene	11.14	95	208529	52.80	ug/l	0.00
Spiked Amount	50.000		Recovery	=	105.60%	

## Target Compounds

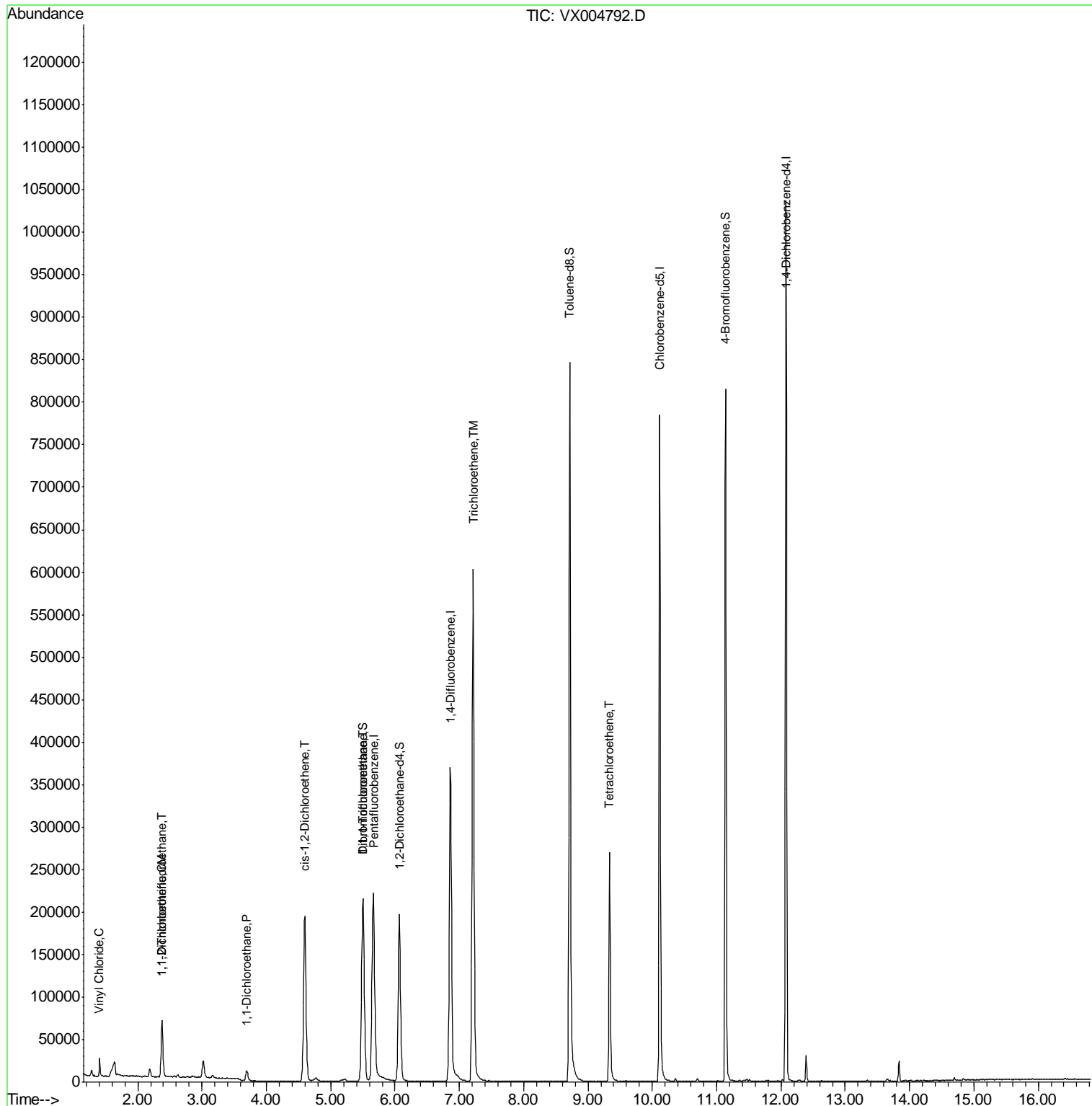
					Qvalue
4) Vinyl Chloride	1.40	62	13440	3.660	ug/l 99
9) 1,1,2-Trichlorotrifluoroet	2.38	101	14188	5.478	ug/l 100
12) 1,1-Dichloroethene	2.37	96	13472	5.253	ug/l 98
24) 1,1-Dichloroethane	3.69	63	13306	2.367	ug/l 98
27) cis-1,2-Dichloroethene	4.60	96	126321	40.276	ug/l 94
32) 1,1,1-Trichloroethane	5.49	97	36104	8.322	ug/l 99
44) Trichloroethene	7.21	130	241204	69.658	ug/l 95
64) Tetrachloroethene	9.34	164	59325	15.682	ug/l 97

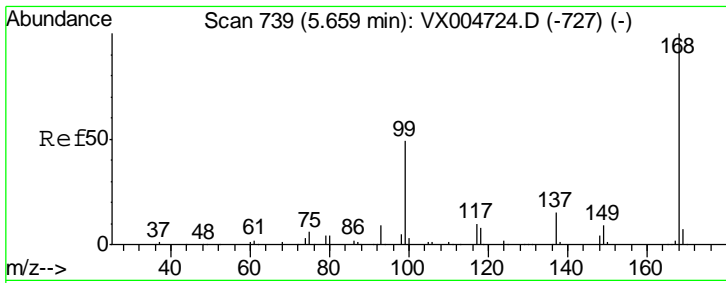
(#) = qualifier out of range (m) = manual integration (+) = signals summed

Data Path : Z:\VOASRV\HPCHEM1\MSVOA X\DATA\VX092718\  
 Data File : VX004792.D  
 Acq On : 28 Sep 2018 00:10  
 Operator : JC/MD  
 Sample : J5048-15 20X  
 Misc : 5.0mL/MSVOA X/WATER  
 ALS Vial : 33 Sample Multiplier: 1

Instrument :  
 MSVOA\_X  
 Client Sampled :  
 DMW-29A-SEP18

Quant Time: Sep 28 13:53:36 2018  
 Quant Method : Z:\VOASRV\HPCHEM1\MSVOA\_X\METHOD\82X092618W.M  
 Quant Title : SW846 8260  
 QLast Update : Wed Sep 26 14:17:02 2018  
 Response via : Initial Calibration

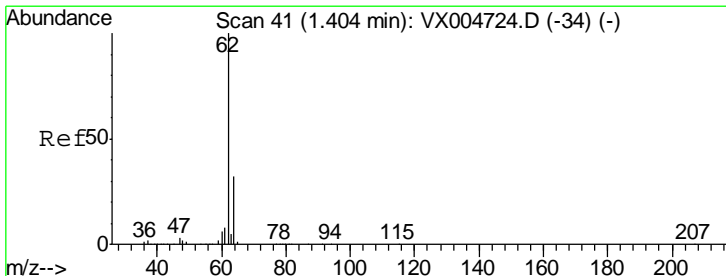
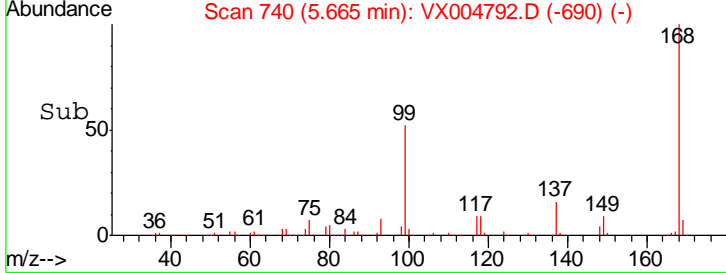
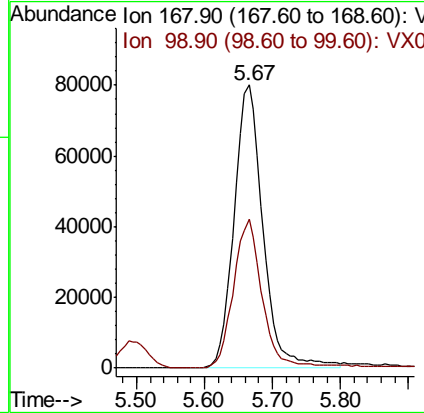
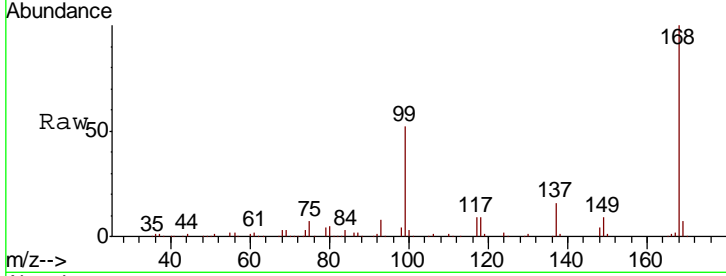




#1  
 Pentafluorobenzene  
 Concen: 50.000 ug/l  
 RT: 5.67 min Scan# 740  
 Delta R.T. 0.01 min  
 Lab File: VX004792.D  
 Acq: 28 Sep 2018 00:10

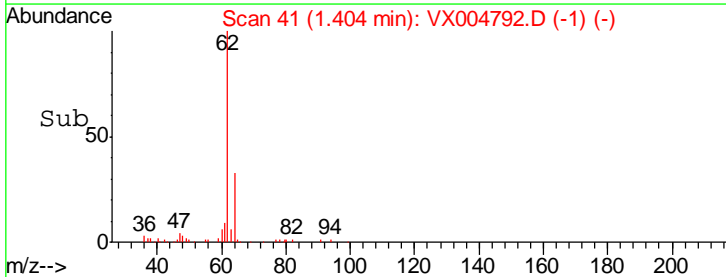
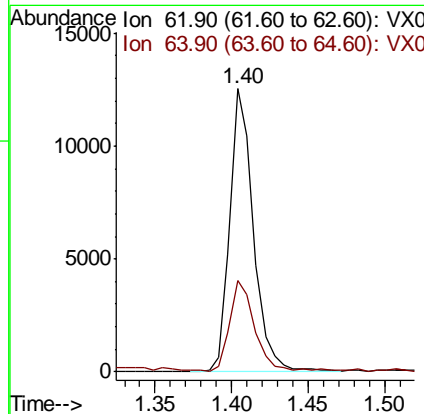
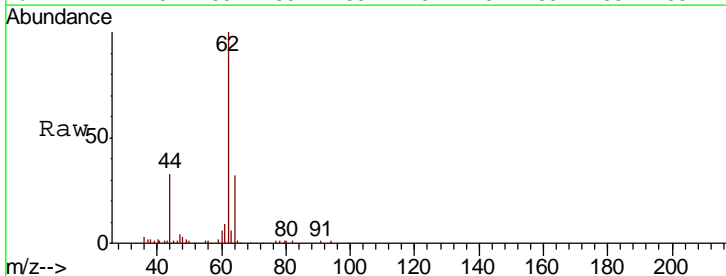
Instrument : MSVOA\_X  
 ClientSampleId : DMW-29A-SEP18

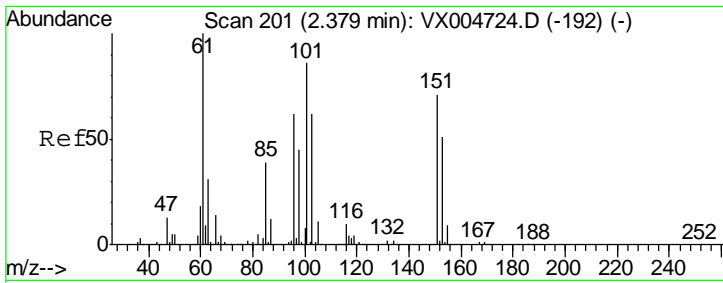
Tgt Ion	Resp	Lower	Upper
168	100		
99	52.3	39.9	59.9



#4  
 Vinyl Chloride  
 Concen: 3.660 ug/l  
 RT: 1.40 min Scan# 41  
 Delta R.T. 0.00 min  
 Lab File: VX004792.D  
 Acq: 28 Sep 2018 00:10

Tgt Ion	Resp	Lower	Upper
62	100		
64	31.9	25.8	38.8

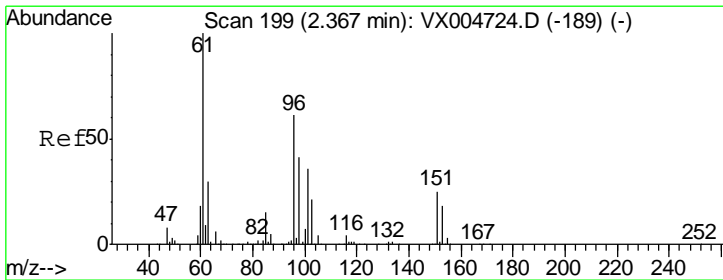
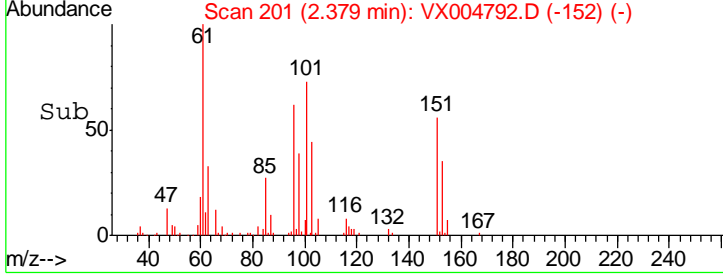
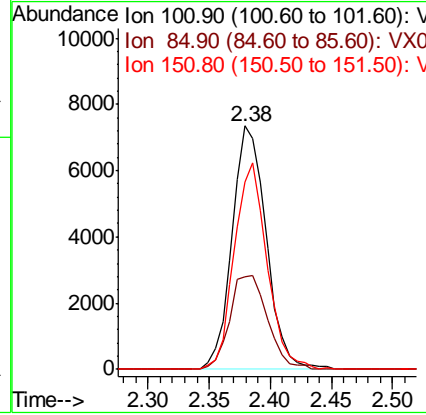
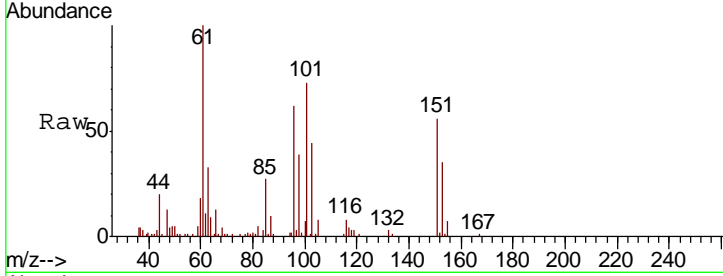




#9  
 1,1,2-Trichlorotrifluoroethane  
 Concen: 5.478 ug/l  
 RT: 2.38 min Scan# 201  
 Delta R.T. 0.00 min  
 Lab File: VX004792.D  
 Acq: 28 Sep 2018 00:10

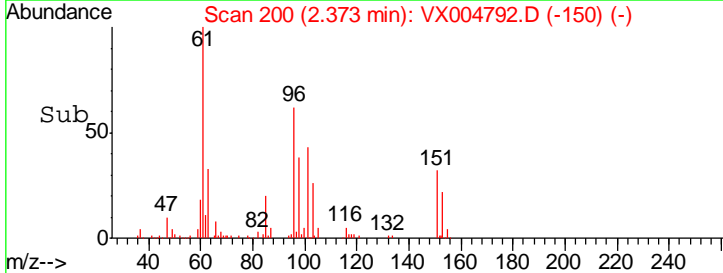
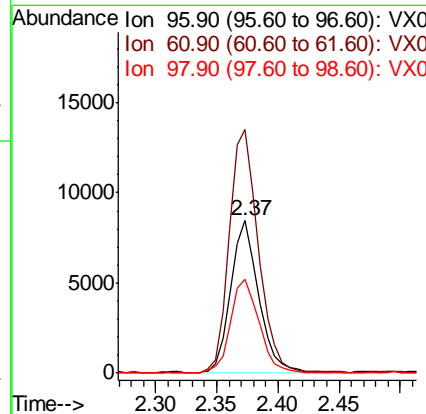
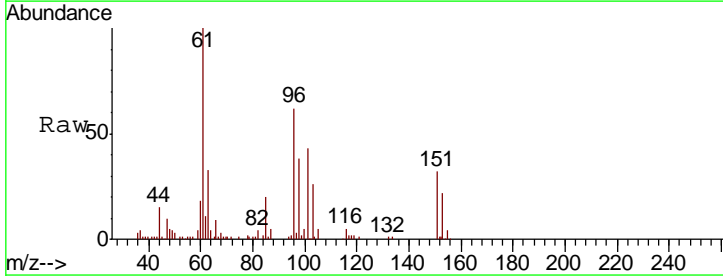
Instrument :  
 MSVOA\_X  
 ClientSampleId :  
 DMW-29A-SEP18

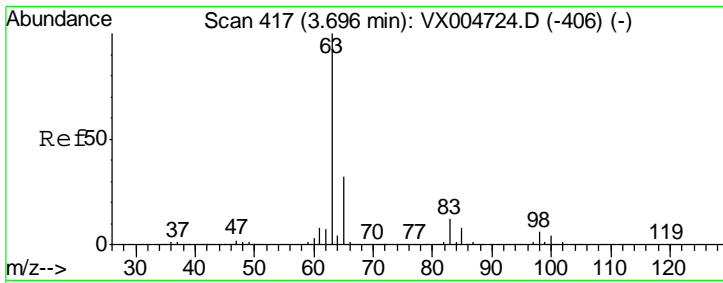
Tgt Ion	Resp	Lower	Upper
101	14188		
85	42.7	34.2	51.4
151	81.4	65.0	97.6



#12  
 1,1-Dichloroethene  
 Concen: 5.253 ug/l  
 RT: 2.37 min Scan# 200  
 Delta R.T. 0.01 min  
 Lab File: VX004792.D  
 Acq: 28 Sep 2018 00:10

Tgt Ion	Resp	Lower	Upper
96	13472		
61	160.0	128.8	193.2
98	61.4	52.2	78.2

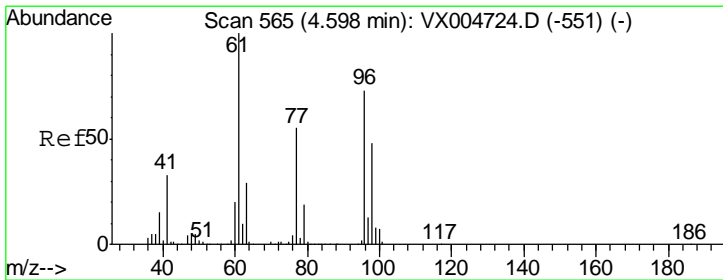
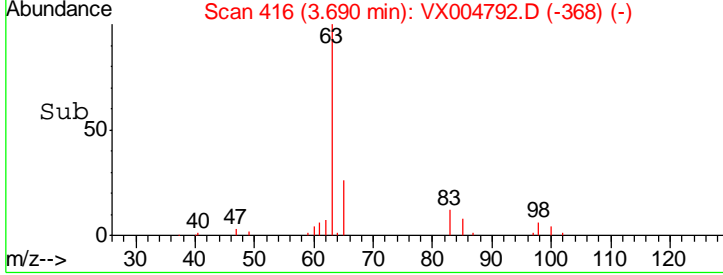
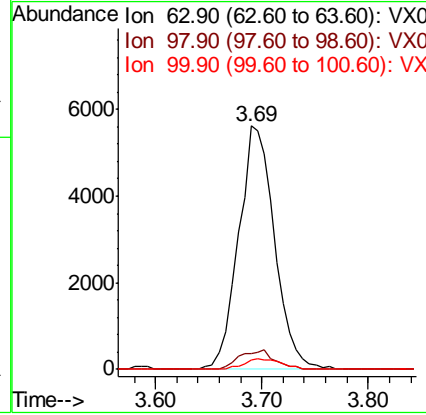
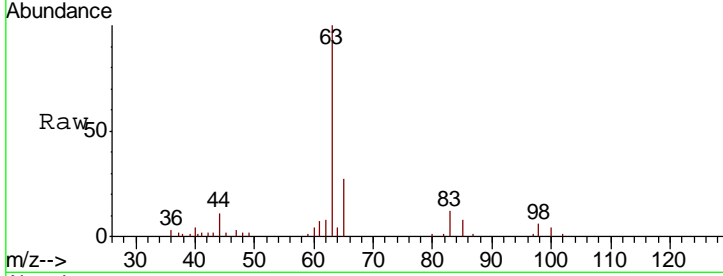




#24  
 1,1-Dichloroethane  
 Concen: 2.367 ug/l  
 RT: 3.69 min Scan# 416  
 Delta R.T. -0.01 min  
 Lab File: VX004792.D  
 Acq: 28 Sep 2018 00:10

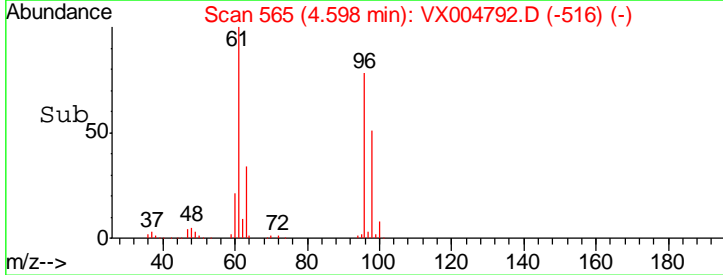
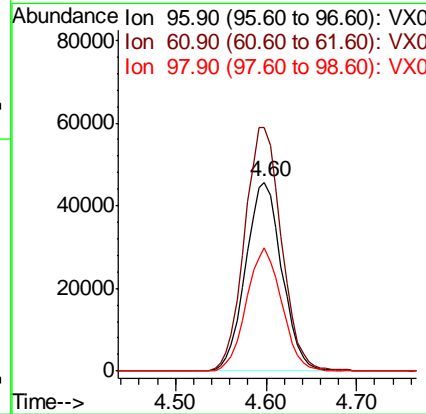
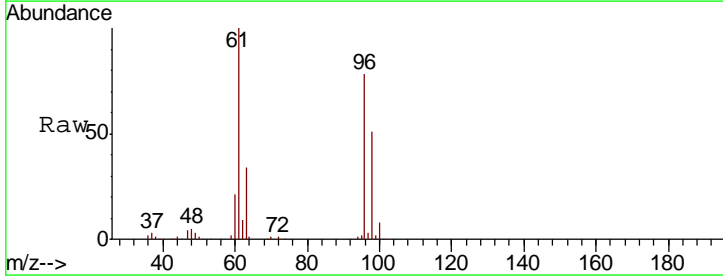
Instrument : MSVOA\_X  
 ClientSampled : DMW-29A-SEP18

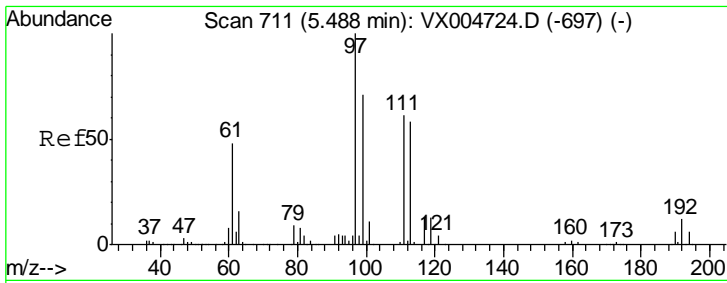
Tgt Ion	Resp	Lower	Upper
63	13306		
98	6.5	3.5	10.4
100	4.0	2.4	7.1



#27  
 cis-1,2-Dichloroethene  
 Concen: 40.276 ug/l  
 RT: 4.60 min Scan# 565  
 Delta R.T. 0.00 min  
 Lab File: VX004792.D  
 Acq: 28 Sep 2018 00:10

Tgt Ion	Resp	Lower	Upper
96	126321		
61	131.6	0.0	282.6
98	63.6	0.0	130.2

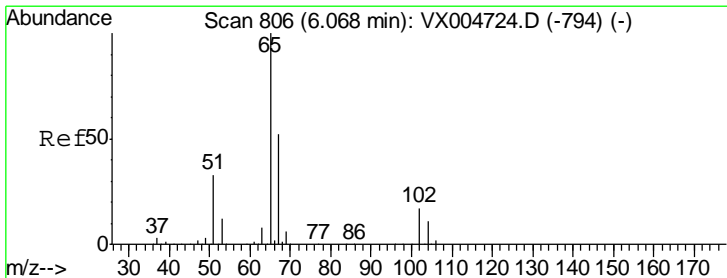
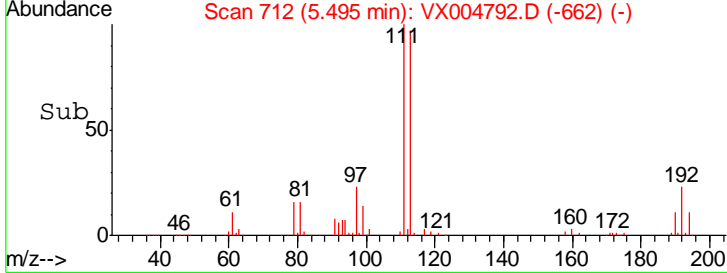
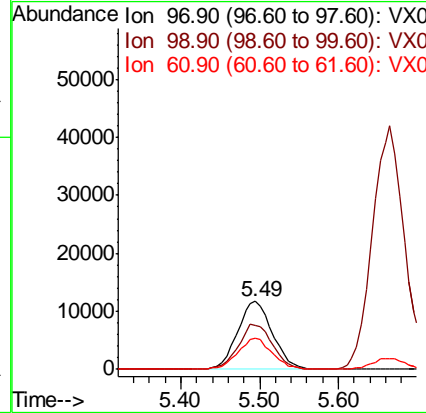
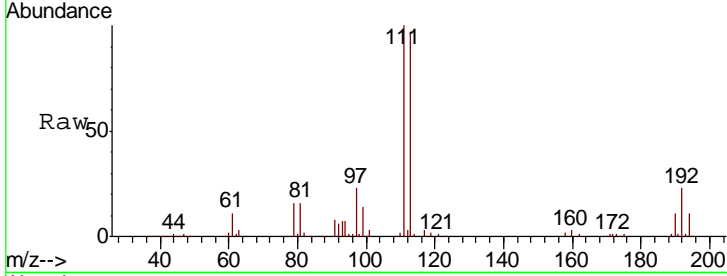




#32  
 1,1,1-Trichloroethane  
 Concen: 8.322 ug/l  
 RT: 5.49 min Scan# 712  
 Delta R.T. 0.01 min  
 Lab File: VX004792.D  
 Acq: 28 Sep 2018 00:10

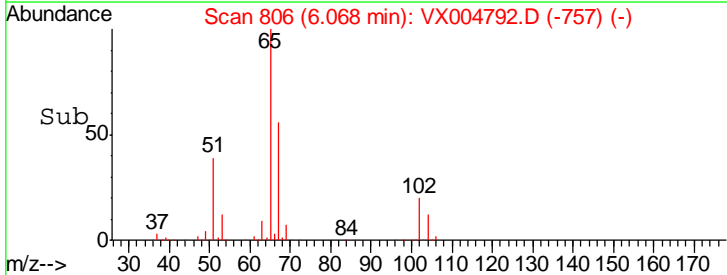
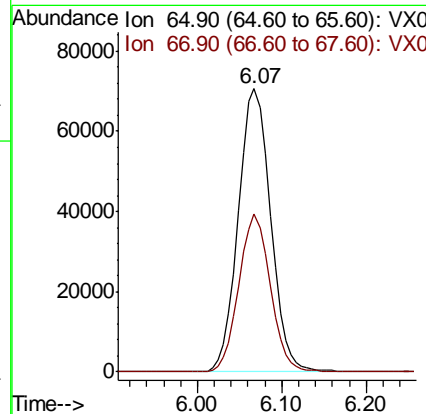
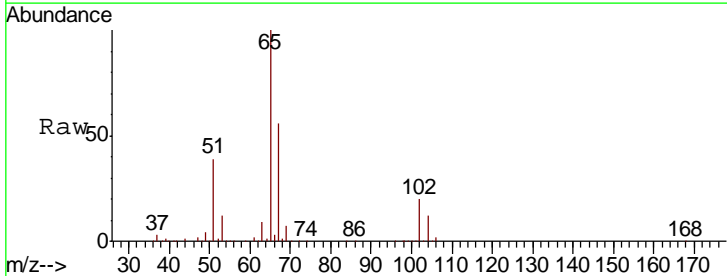
**Instrument :**  
 MSVOA\_X  
**ClientSampled :**  
 DMW-29A-SEP18

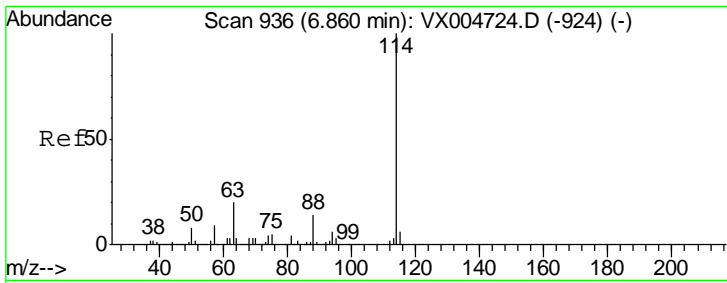
Tgt Ion	Resp	Lower	Upper
97	36104		
97	100		
99	65.1	52.0	78.0
61	44.9	34.9	52.3



#33  
 1,2-Dichloroethane-d4  
 Concen: 54.322 ug/l  
 RT: 6.07 min Scan# 806  
 Delta R.T. 0.00 min  
 Lab File: VX004792.D  
 Acq: 28 Sep 2018 00:10

Tgt Ion	Resp	Lower	Upper
65	183679		
65	100		
67	54.2	0.0	106.8

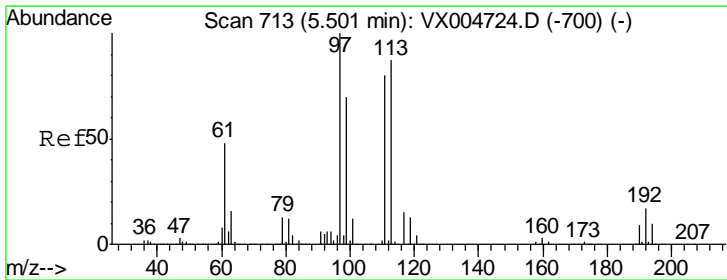
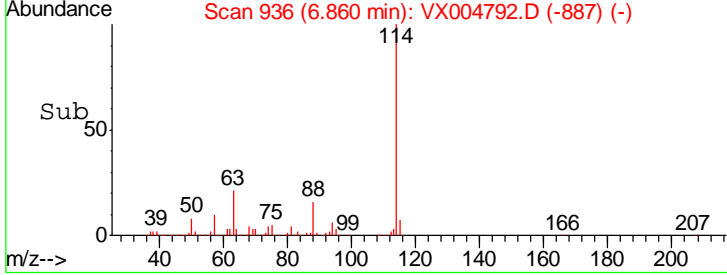
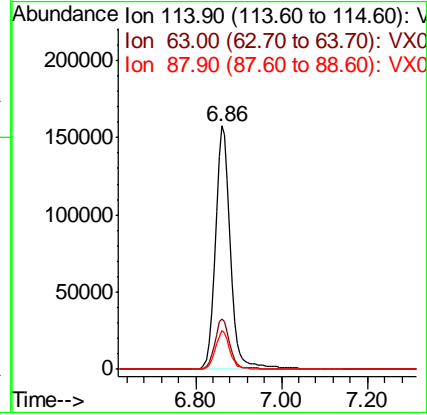
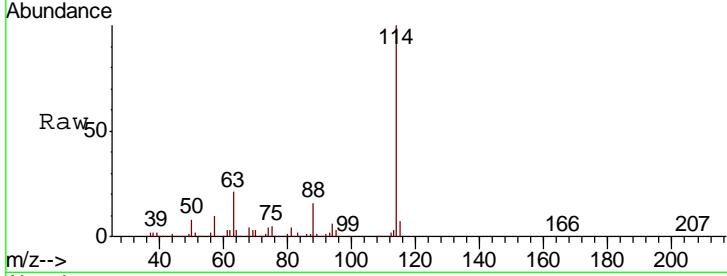




#34  
 1,4-Difluorobenzene  
 Concen: 50.000 ug/l  
 RT: 6.86 min Scan# 936  
 Delta R.T. 0.00 min  
 Lab File: VX004792.D  
 Acq: 28 Sep 2018 00:10

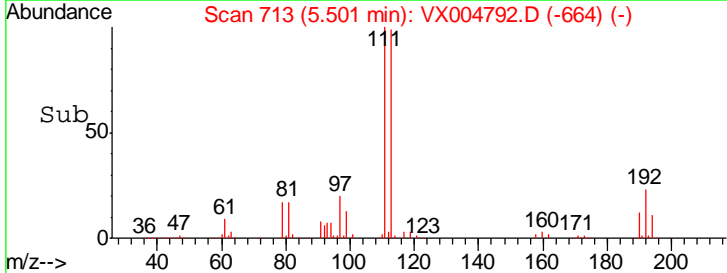
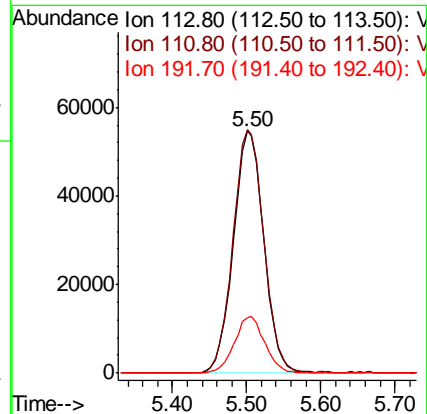
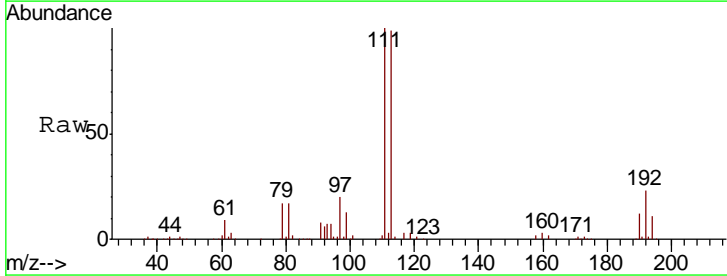
Instrument : MSVOA\_X  
 ClientSampled : DMW-29A-SEP18

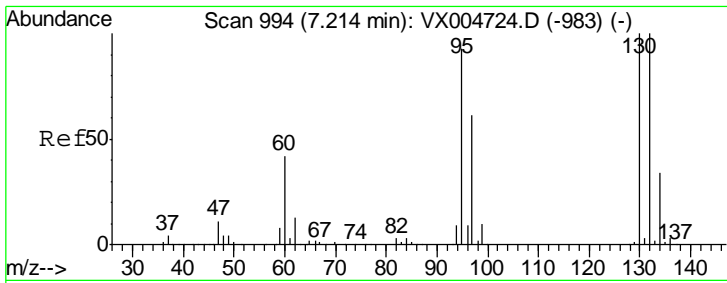
Tgt Ion	Resp	Lower	Upper
114	100		
63	20.7	0.0	39.0
88	16.1	0.0	30.4



#35  
 Dibromofluoromethane  
 Concen: 47.340 ug/l  
 RT: 5.50 min Scan# 713  
 Delta R.T. 0.00 min  
 Lab File: VX004792.D  
 Acq: 28 Sep 2018 00:10

Tgt Ion	Resp	Lower	Upper
113	100		
111	102.2	82.4	123.6
192	23.4	19.4	29.2

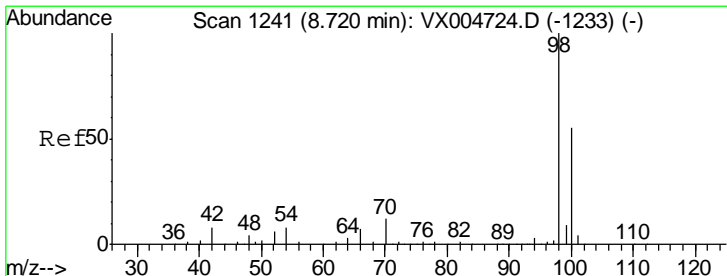
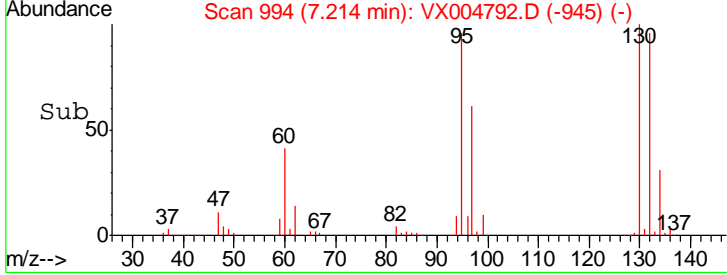
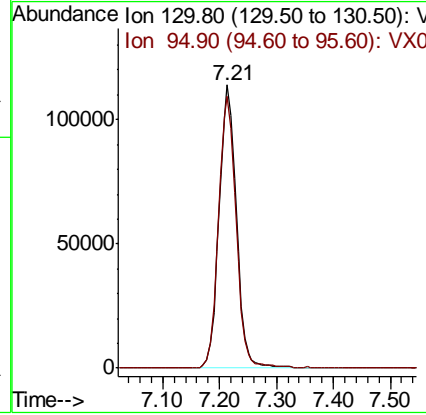
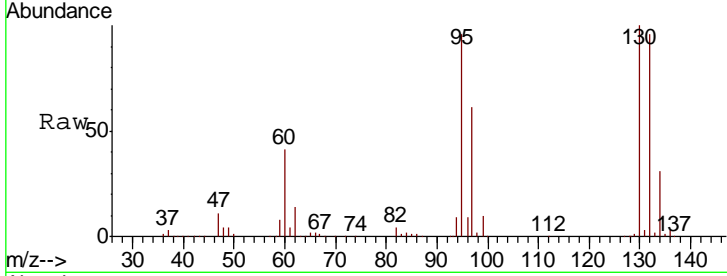




#44  
 Trichloroethene  
 Concen: 69.658 ug/l  
 RT: 7.21 min Scan# 994  
 Delta R.T. 0.00 min  
 Lab File: VX004792.D  
 Acq: 28 Sep 2018 00:10

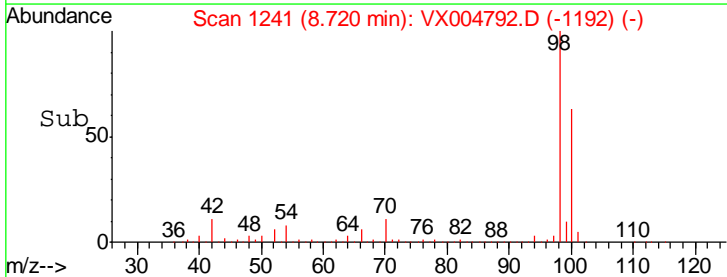
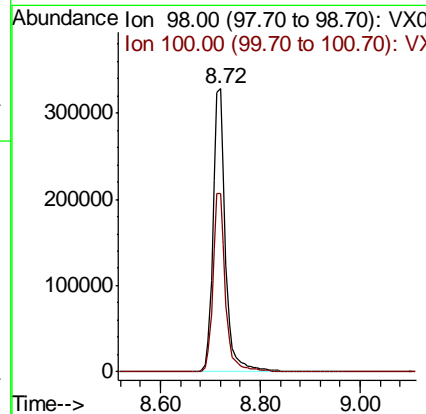
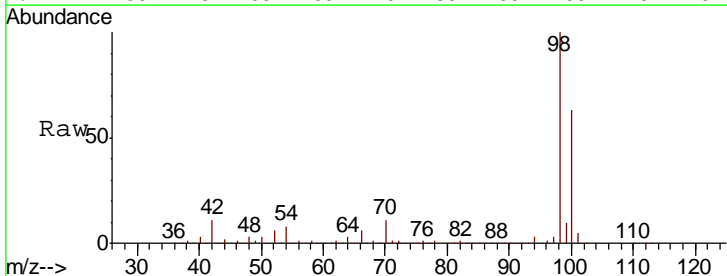
Instrument : MSVOA\_X  
 ClientSampled : DMW-29A-SEP18

Tgt Ion	Resp	Lower	Upper
130	100		
95	96.0	0.0	181.6

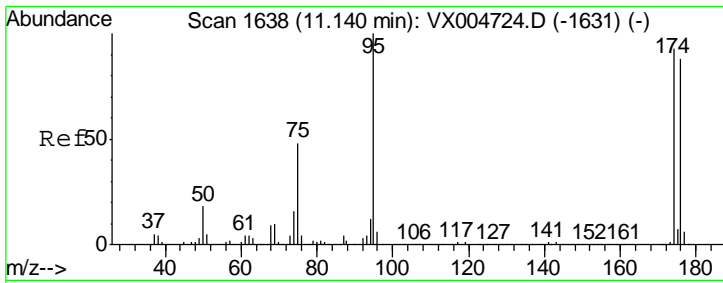


#50  
 Toluene-d8  
 Concen: 52.100 ug/l  
 RT: 8.72 min Scan# 1241  
 Delta R.T. 0.00 min  
 Lab File: VX004792.D  
 Acq: 28 Sep 2018 00:10

Tgt Ion	Resp	Lower	Upper
98	100		
100	63.4	52.9	79.3



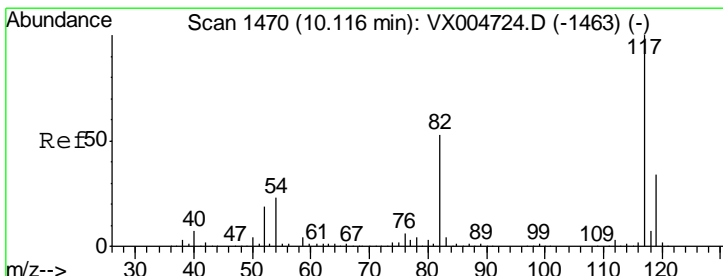
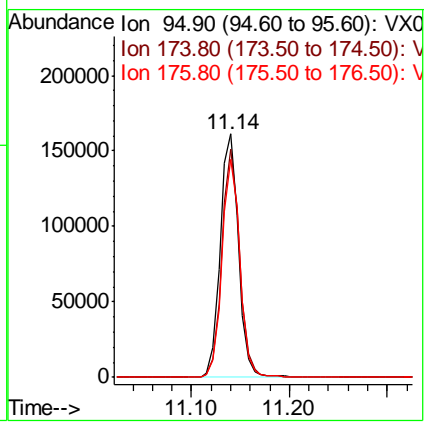
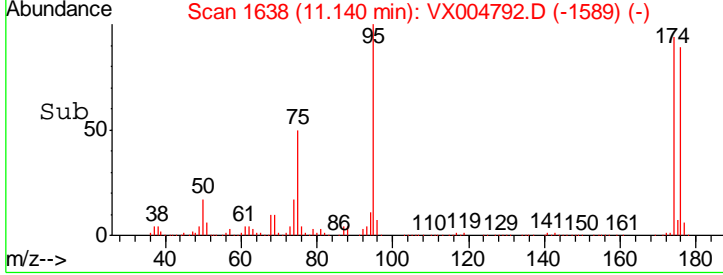
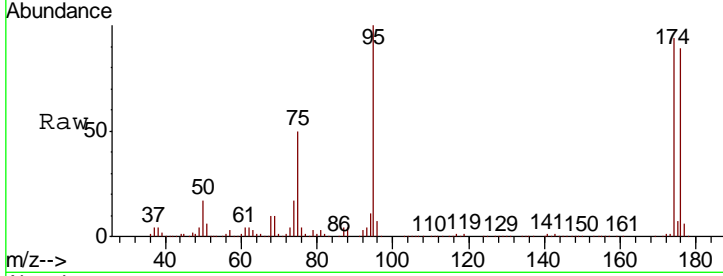




#62  
 4-Bromofluorobenzene  
 Concen: 52.799 ug/l  
 RT: 11.14 min Scan# 1638  
 Delta R.T. 0.00 min  
 Lab File: VX004792.D  
 Acq: 28 Sep 2018 00:10

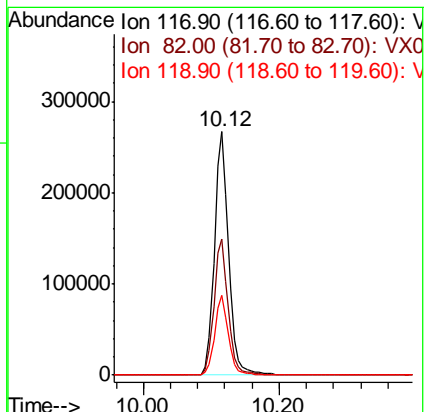
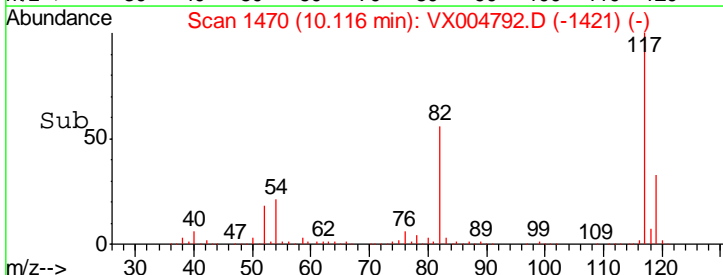
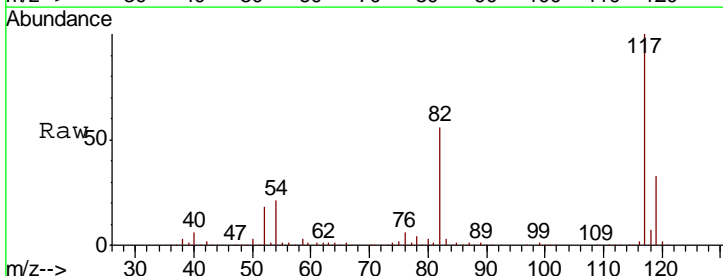
Instrument : MSVOA\_X  
 ClientSampled : DMW-29A-SEP18

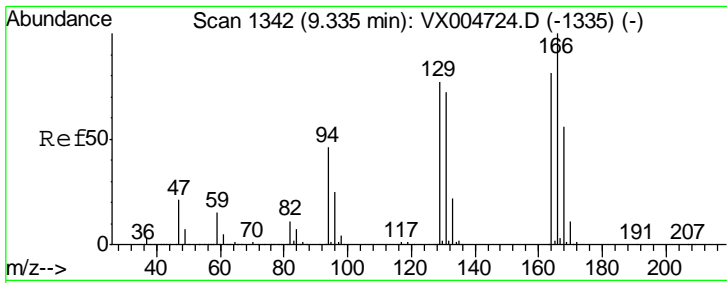
Tgt Ion	Resp	Lower	Upper
95	100		
174	91.4	0.0	185.2
176	87.9	0.0	178.6



#63  
 Chlorobenzene-d5  
 Concen: 50.000 ug/l  
 RT: 10.12 min Scan# 1470  
 Delta R.T. 0.00 min  
 Lab File: VX004792.D  
 Acq: 28 Sep 2018 00:10

Tgt Ion	Resp	Lower	Upper
117	100		
82	55.8	47.8	71.6
119	32.7	29.3	43.9

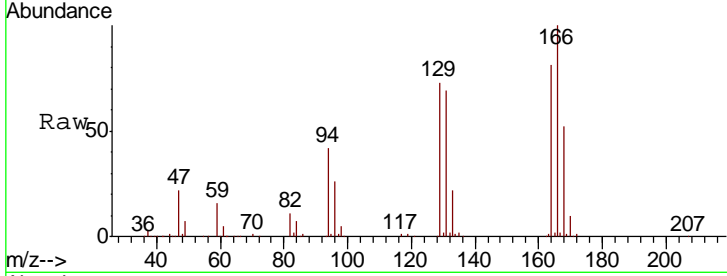




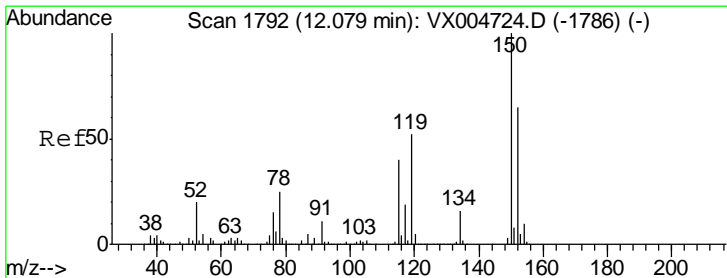
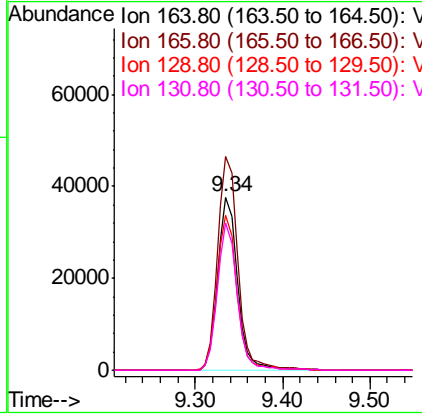
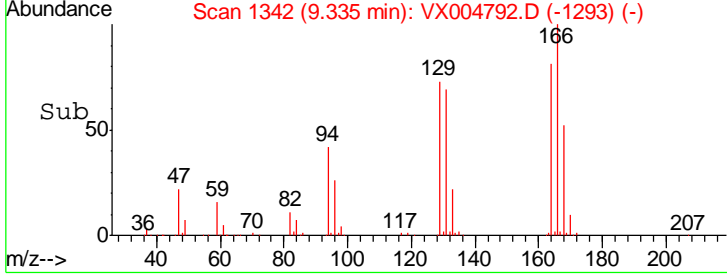
#64

Tetrachloroethene  
 Concen: 15.682 ug/l  
 RT: 9.34 min Scan# 1342  
 Delta R.T. 0.00 min  
 Lab File: VX004792.D  
 Acq: 28 Sep 2018 00:10

Instrument :  
 MSVOA\_X  
 ClientSampled :  
 DMW-29A-SEP18

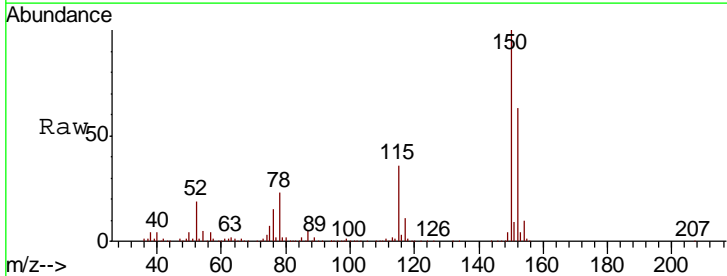


Tgt Ion	Resp	Lower	Upper
164	100		
166	123.3	102.8	154.2
129	89.7	69.4	104.0
131	85.1	67.9	101.9



#72

1,4-Dichlorobenzene-d4  
 Concen: 50.000 ug/l  
 RT: 12.08 min Scan# 1792  
 Delta R.T. 0.00 min  
 Lab File: VX004792.D  
 Acq: 28 Sep 2018 00:10



Tgt Ion	Resp	Lower	Upper
152	100		
115	56.2	39.0	117.0
150	156.4	0.0	351.0

