

Data Path : Z:\VOASRV\HPCHEM1\MSVOA X\DATA\VX092718\
 Data File : VX004793.D
 Acq On : 28 Sep 2018 00:37
 Operator : JC/MD
 Sample : J5048-01 40X
 Misc : 5.0mL/MSVOA X/WATER
 ALS Vial : 34 Sample Multiplier: 1

Instrument :
 MSVOA_X
 ClientSampleId :
 CMT-18-2-SEP18

Integration Parameters: RTEINT.P
 Integrator: RTE
 Smoothing : ON Filtering: 5
 Sampling : 1 Min Area: 3 % of largest Peak
 Start Thrs: 0.2 Max Peaks: 100
 Stop Thrs : 0 Peak Location: TOP

If leading or trailing edge < 100 prefer < Baseline drop else tangent >
 Peak separation: 5

Method : Z:\VOASRV\HPCHEM1\MSVOA_X\METHOD\82X092618W.M
 Title : SW846 8260

Signal : TIC

peak #	R.T. min	first scan	max scan	last scan	PK TY	peak height	corr. area	corr. % max.	% of total
1	1.635	64	79	83	rBV5	15895	49880	3.38%	0.564%
2	3.013	300	305	314	rVB	11225	26863	1.82%	0.304%
3	4.598	551	565	582	rBV	454786	1265898	85.67%	14.306%
4	5.501	700	713	727	rBV	181288	512175	34.66%	5.788%
5	5.659	727	739	758	rBV	216327	651630	44.10%	7.364%
6	6.068	795	806	822	rBV	194469	503007	34.04%	5.685%
7	6.860	926	936	965	rBV	366268	919146	62.21%	10.387%
8	7.214	986	994	1006	rVB	21475	46180	3.13%	0.522%
9	8.713	1233	1240	1271	rBV	843401	1477585	100.00%	16.698%
10	10.116	1464	1470	1488	rBV	784376	1115091	75.47%	12.602%
11	11.140	1632	1638	1654	rBV	795753	1029588	69.68%	11.635%
12	12.079	1786	1792	1805	rBV	1053898	1251685	84.71%	14.145%

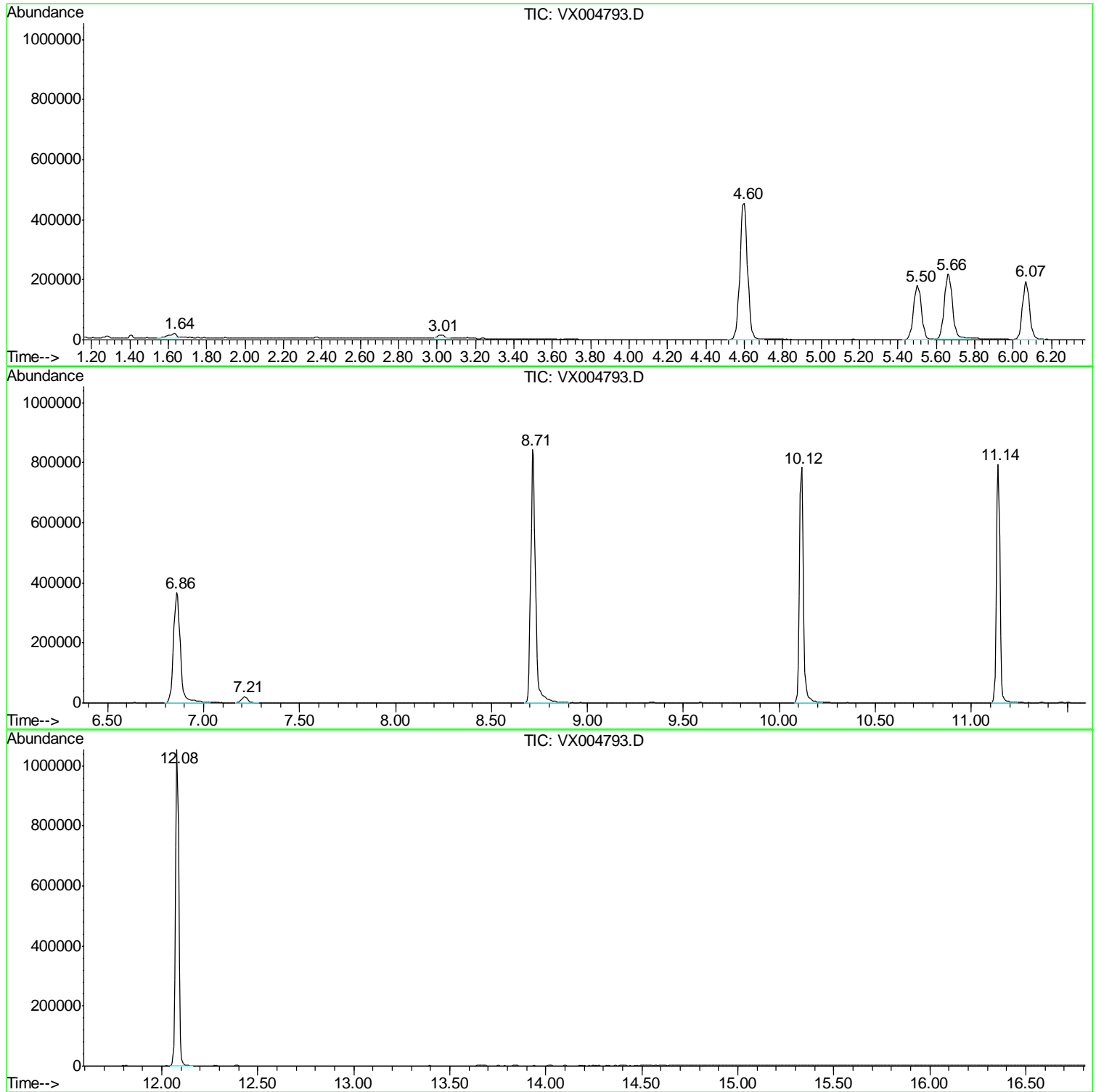
Sum of corrected areas: 8848728

Data Path : Z:\VOASRV\HPCHEM1\MSVOA X\DATA\VX092718\
Data File : VX004793.D
Acq On : 28 Sep 2018 00:37
Operator : JC/MD
Sample : J5048-01 40X
Misc : 5.0mL/MSVOA X/WATER
ALS Vial : 34 Sample Multiplier: 1

Instrument :
MSVOA_X
ClientSampled :
CMT-18-2-SEP18

Quant Method : Z:\VOASRV\HPCHEM1\MSVOA_X\METHOD\82X092618W.M
Quant Title : SW846 8260

TIC Library : C:\DATABASE\NIST11.L
TIC Integration Parameters: LSCINT.P



Data Path : Z:\VOASRV\HPCHEM1\MSVOA_X\DATA\VX092718\
Data File : VX004793.D
Acq On : 28 Sep 2018 00:37
Operator : JC/MD
Sample : J5048-01 40X
Misc : 5.0mL/MSVOA_X/WATER
ALS Vial : 34 Sample Multiplier: 1

Instrument :
MSVOA_X
ClientSampleId :
CMT-18-2-SEP18

Quant Method : Z:\VOASRV\HPCHEM1\MSVOA_X\METHOD\82X092618W.M
Quant Title : SW846 8260

TIC Library : C:\DATABASE\NIST11.L
TIC Integration Parameters: LSCINT.P

No Library Search Compounds Detected

Data Path : Z:\VOASRV\HPCHEM1\MSVOA_X\DATA\VX092718\
Data File : VX004793.D
Acq On : 28 Sep 2018 00:37
Operator : JC/MD
Sample : J5048-01 40X
Misc : 5.0mL/MSVOA_X/WATER
ALS Vial : 34 Sample Multiplier: 1

Instrument :
MSVOA_X
ClientSampleId :
CMT-18-2-SEP18

Quant Method : Z:\VOASRV\HPCHEM1\MSVOA_X\METHOD\82X092618W.M
Quant Title : SW846 8260

TIC Library : C:\DATABASE\NIST11.L
TIC Integration Parameters: LSCINT.P

TIC Top Hit name	RT	EstConc	Units	Response	--Internal Standard--			
					#	RT	Resp	Conc
