

Data Path : Z:\VOASRV\HPCHEM1\MSVOA X\DATA\VX092818\
 Data File : VX004847.D
 Acq On : 29 Sep 2018 03:39
 Operator : JC/MD
 Sample : J5134-11
 Misc : 5.0mL/MSVOA X/WATER
 ALS Vial : 39 Sample Multiplier: 1

Instrument :
 MSVOA_X
 ClientSampleId :
 SA-TW505-4953

Quant Time: Sep 29 06:38:53 2018
 Quant Method : Z:\VOASRV\HPCHEM1\MSVOA_X\METHOD\82X092618W.M
 Quant Title : SW846 8260
 QLast Update : Wed Sep 26 14:17:02 2018
 Response via : Initial Calibration

Internal Standards	R.T.	QIon	Response	Conc	Units	Dev(Min)
1) Pentafluorobenzene	5.67	168	240593	50.00	ug/l	0.01
34) 1,4-Difluorobenzene	6.87	114	393948	50.00	ug/l	0.00
63) Chlorobenzene-d5	10.12	117	368363	50.00	ug/l	0.00
72) 1,4-Dichlorobenzene-d4	12.08	152	206298	50.00	ug/l	0.00

System Monitoring Compounds

33) 1,2-Dichloroethane-d4	6.07	65	189310	55.08	ug/l	0.00
Spiked Amount	50.000		Recovery	=	110.16%	
35) Dibromofluoromethane	5.49	113	162861	48.78	ug/l	0.00
Spiked Amount	50.000		Recovery	=	97.56%	
50) Toluene-d8	8.72	98	544925	49.09	ug/l	0.00
Spiked Amount	50.000		Recovery	=	98.18%	
62) 4-Bromofluorobenzene	11.14	95	197247	49.33	ug/l	0.00
Spiked Amount	50.000		Recovery	=	98.66%	

Target Compounds

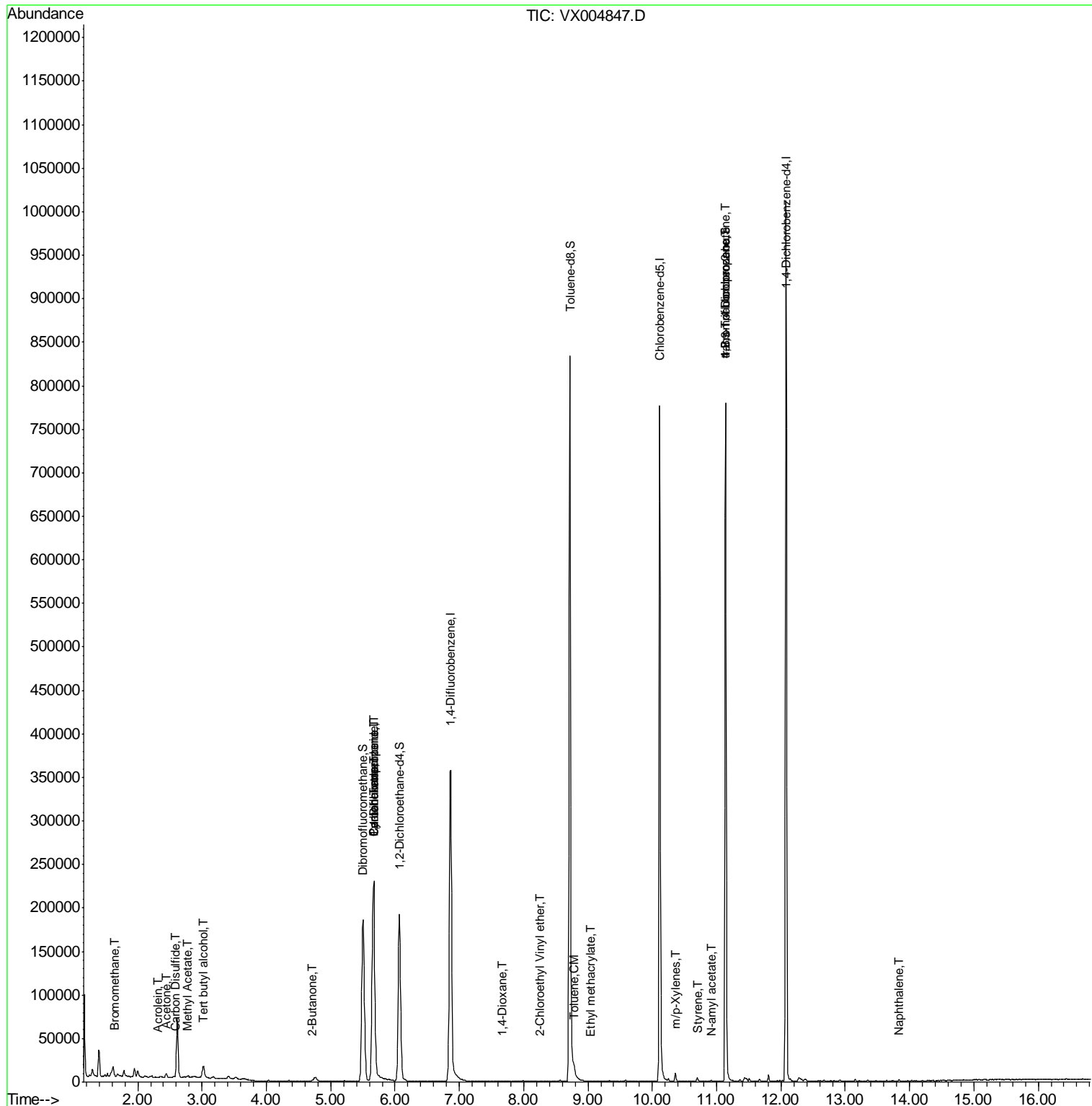
					Qvalue	
5) Bromomethane	1.64	94	530	0.239	ug/l #	77
6) Chloroethane	1.71	64	487	Below Cal	#	66
11) Tert butyl alcohol	3.03	59	8743	9.098	ug/l #	79
13) Acrolein	2.31	56	409	0.598	ug/l #	16
16) Acetone	2.44	43	5303	2.643	ug/l #	85
17) Carbon Disulfide	2.57	76	1905	0.243	ug/l	96
18) Methyl Acetate	2.77	43	1021	0.201	ug/l	100
20) Methylene Chloride	2.86	84	426	Below Cal	#	82
25) 2-Butanone	4.70	43	1103	0.373	ug/l #	86
31) Cyclohexane	5.67	56	5151	1.178	ug/l #	18
36) 1,1-Dichloropropene	5.67	75	17002	3.732	ug/l #	49
38) Carbon Tetrachloride	5.67	117	21388	4.467	ug/l #	15
49) 1,4-Dioxane	7.66	88	24	0.244	ug/l #	1
52) Toluene	8.79	92	2236	0.285	ug/l	94
56) Ethyl methacrylate	9.04	69	66	2.873	ug/l #	1
58) 2-Chloroethyl Vinyl ether	8.26	63	26	14.250	ug/l #	45
68) m/p-Xylenes	10.36	106	2146	0.366	ug/l	95
70) Styrene	10.71	104	147	2.154	ug/l #	1
74) N-amyl acetate	10.91	43	391	1.801	ug/l #	70
76) 1,2,3-Trichloropropane	11.14	75	98300	21.259	ug/l #	37
80) 1,3,5-Trimethylbenzene	11.51	105	1001	Below Cal		100
81) trans-1,4-Dichloro-2-buten	11.14	75	98300	57.665	ug/l #	10
95) Naphthalene	13.83	128	1049	0.780	ug/l #	91

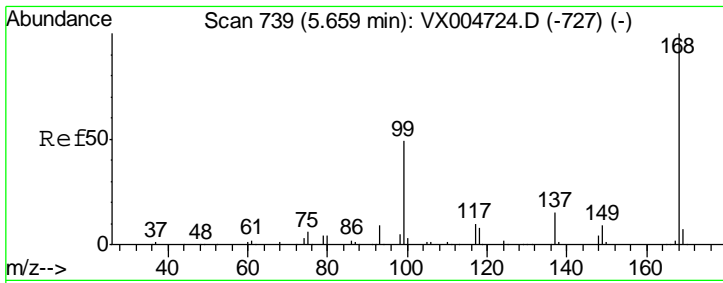
(#) = qualifier out of range (m) = manual integration (+) = signals summed

Data Path : Z:\VOASRV\HPCHEM1\MSVOA X\DATA\VX092818\
 Data File : VX004847.D
 Acq On : 29 Sep 2018 03:39
 Operator : JC/MD
 Sample : J5134-11
 Misc : 5.0mL/MSVOA X/WATER
 ALS Vial : 39 Sample Multiplier: 1

Instrument :
 MSVOA_X
 Client Sampled :
 SA-TW505-4953

Quant Time: Sep 29 06:38:53 2018
 Quant Method : Z:\VOASRV\HPCHEM1\MSVOA_X\METHOD\82X092618W.M
 Quant Title : SW846 8260
 QLast Update : Wed Sep 26 14:17:02 2018
 Response via : Initial Calibration

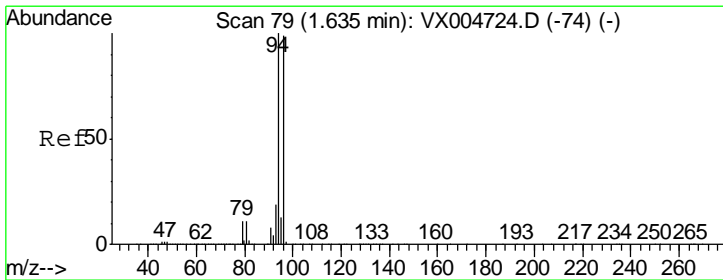
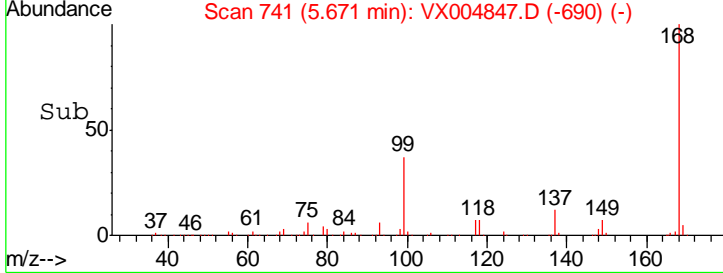
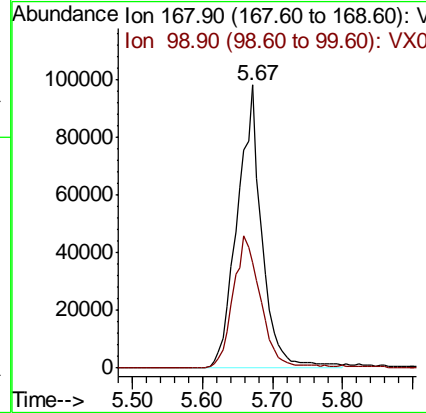
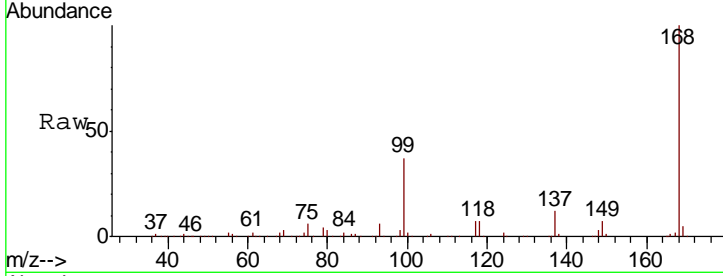




#1
 Pentafluorobenzene
 Concen: 50.000 ug/l
 RT: 5.67 min Scan# 741
 Delta R.T. 0.01 min
 Lab File: VX004847.D
 Acq: 29 Sep 2018 03:39

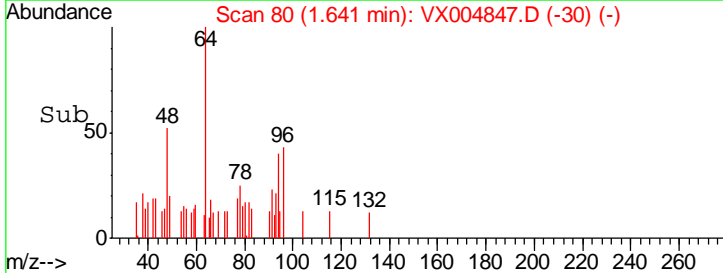
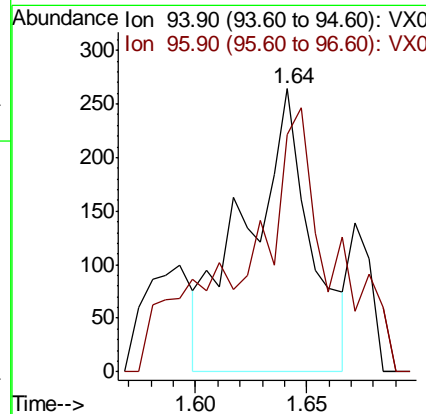
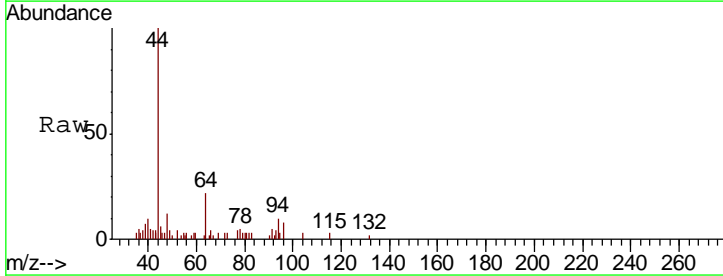
Instrument :
 MSVOA_X
 ClientSampleId :
 SA-TW505-4953

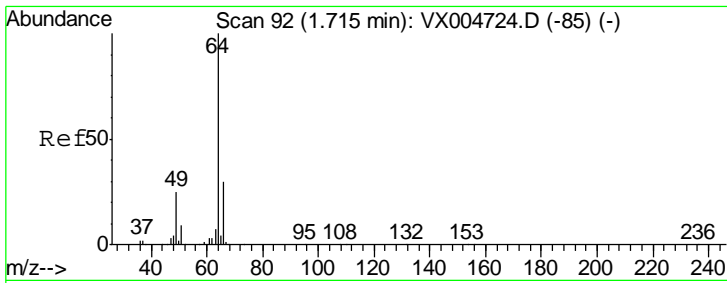
Tgt Ion: 168 Resp: 240593
 Ion Ratio Lower Upper
 168 100
 99 37.1 39.9 59.9#



#5
 Bromomethane
 Concen: 0.239 ug/l
 RT: 1.64 min Scan# 80
 Delta R.T. 0.01 min
 Lab File: VX004847.D
 Acq: 29 Sep 2018 03:39

Tgt Ion: 94 Resp: 530
 Ion Ratio Lower Upper
 94 100
 96 71.4 74.5 111.7#

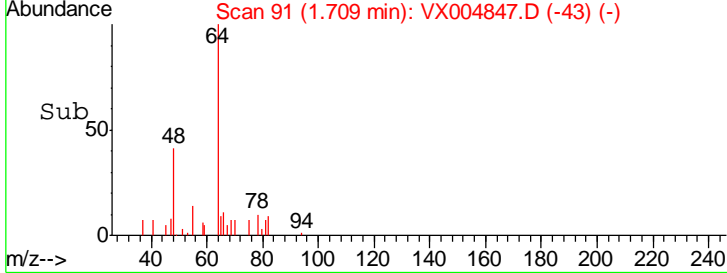
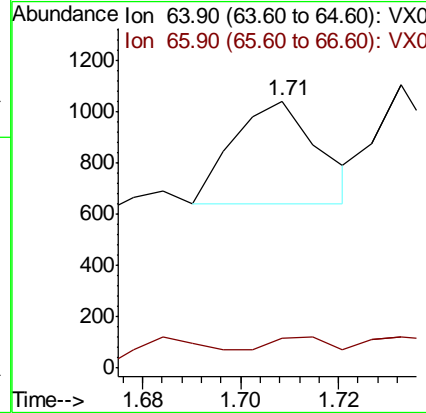
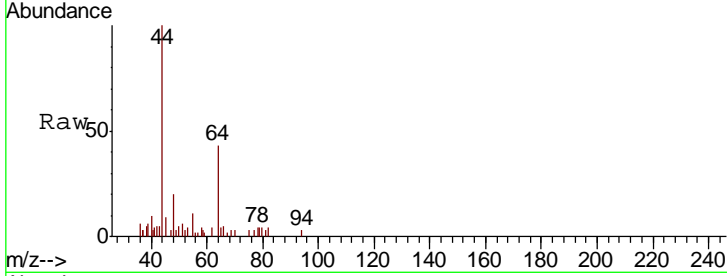




#6
 Chloroethane
 Concen: Below Cal
 RT: 1.71 min Scan# 91
 Delta R.T. -0.01 min
 Lab File: VX004847.D
 Acq: 29 Sep 2018 03:39

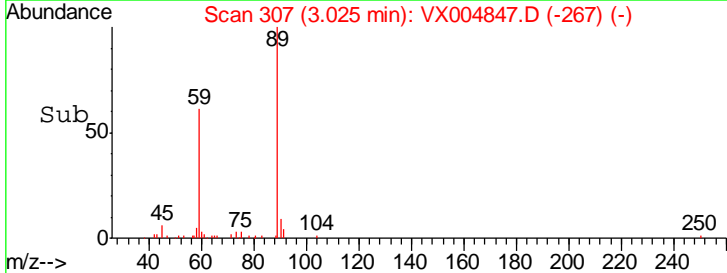
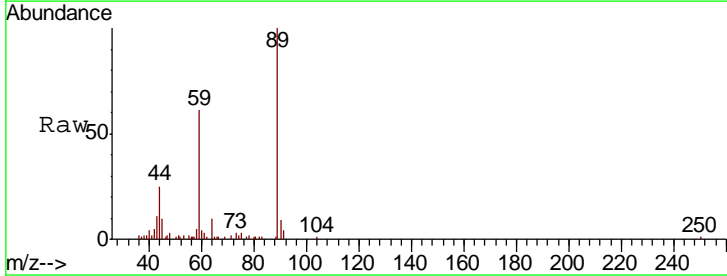
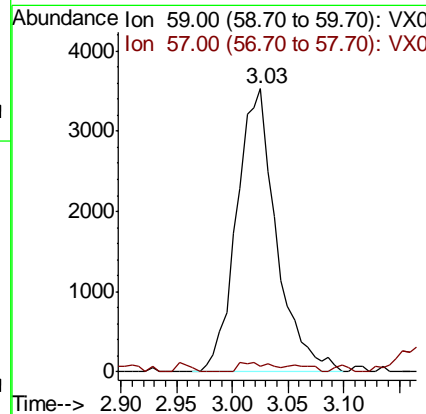
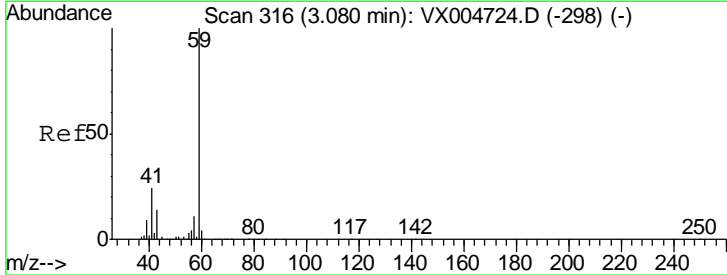
Instrument :
 MSVOA_X
 ClientSampled :
 SA-TW505-4953

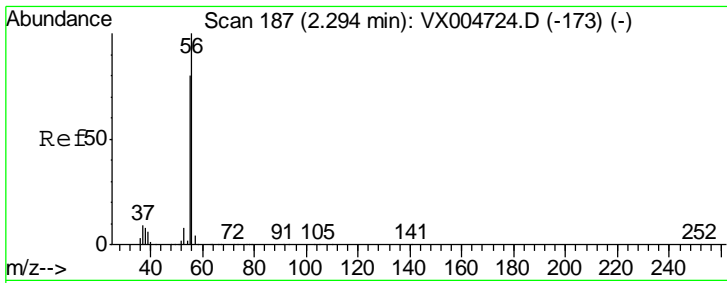
Tgt Ion: 64 Resp: 487
 Ion Ratio Lower Upper
 64 100
 66 11.9 24.6 36.8#



#11
 Tert butyl alcohol
 Concen: 9.098 ug/l
 RT: 3.03 min Scan# 307
 Delta R.T. -0.05 min
 Lab File: VX004847.D
 Acq: 29 Sep 2018 03:39

Tgt Ion: 59 Resp: 8743
 Ion Ratio Lower Upper
 59 100
 57 2.6 8.2 12.4#

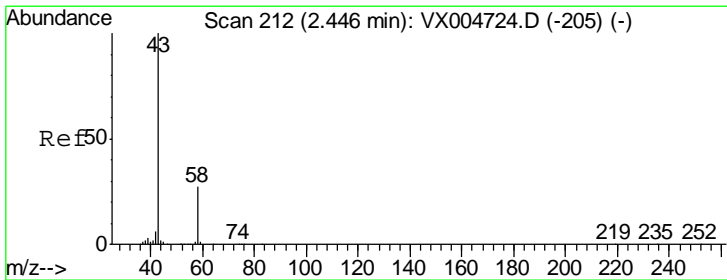
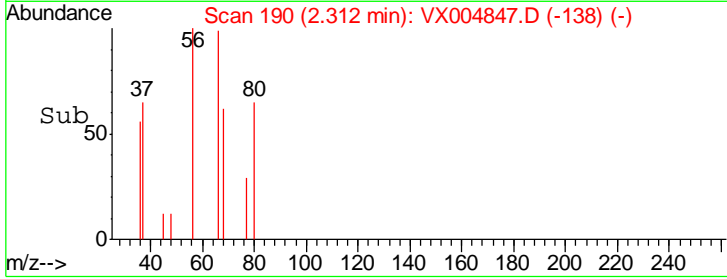
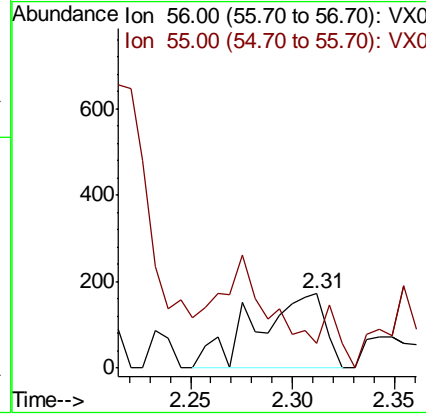
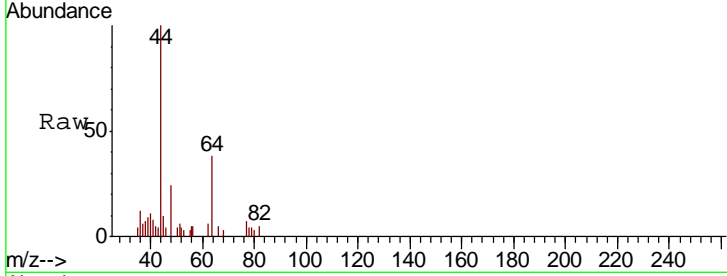




#13
 Acrolein
 Concen: 0.598 ug/l
 RT: 2.31 min Scan# 190
 Delta R.T. 0.02 min
 Lab File: VX004847.D
 Acq: 29 Sep 2018 03:39

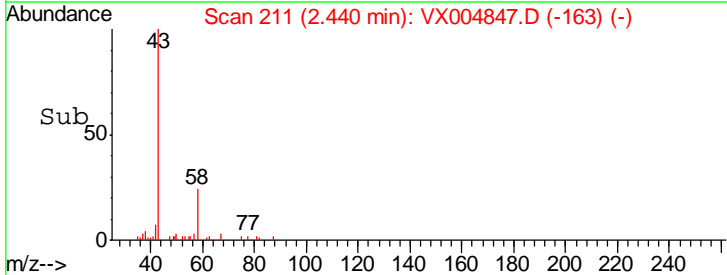
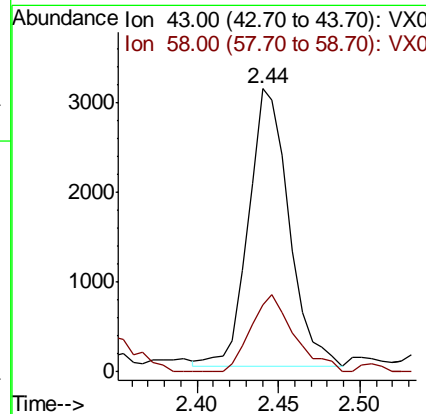
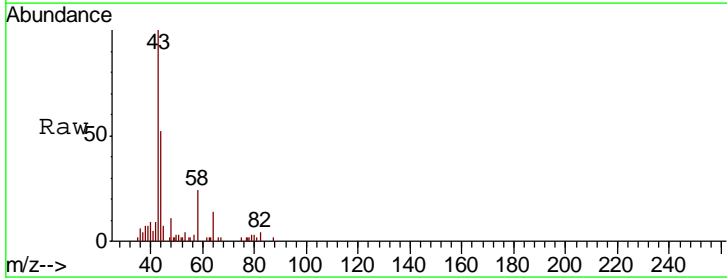
Instrument :
 MSVOA_X
 ClientSampled :
 SA-TW505-4953

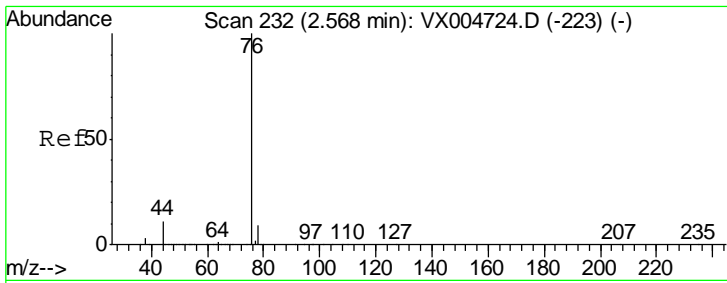
Tgt Ion: 56 Resp: 409
 Ion Ratio Lower Upper
 56 100
 55 0.0 54.7 82.1#



#16
 Acetone
 Concen: 2.643 ug/l
 RT: 2.44 min Scan# 211
 Delta R.T. -0.01 min
 Lab File: VX004847.D
 Acq: 29 Sep 2018 03:39

Tgt Ion: 43 Resp: 5303
 Ion Ratio Lower Upper
 43 100
 58 24.2 26.2 39.4#

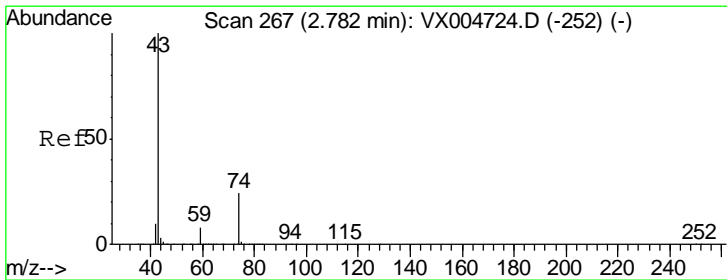
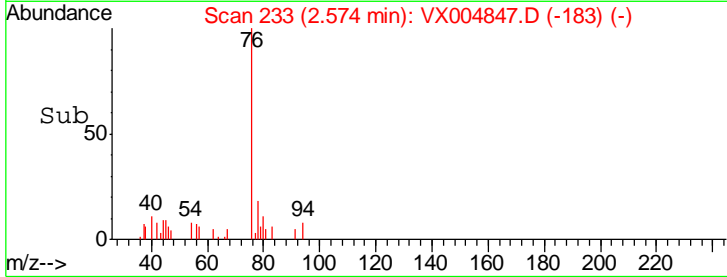
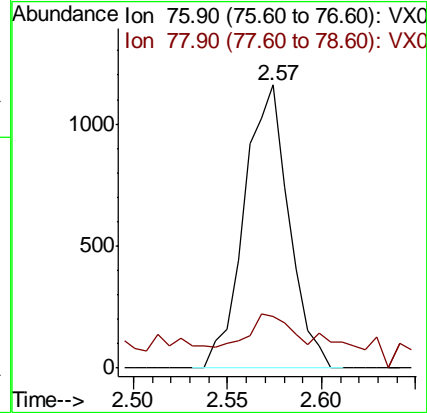
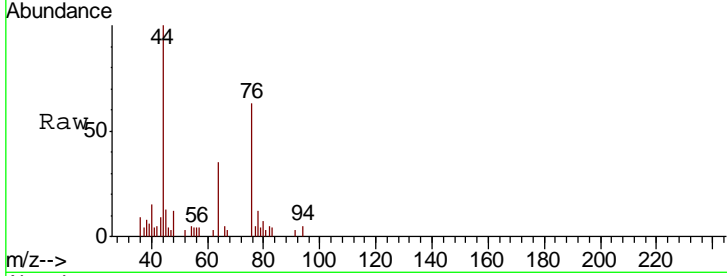




#17
 Carbon Disulfide
 Concen: 0.243 ug/l
 RT: 2.57 min Scan# 233
 Delta R.T. 0.01 min
 Lab File: VX004847.D
 Acq: 29 Sep 2018 03:39

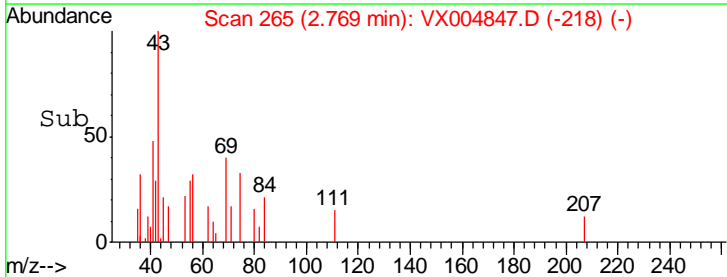
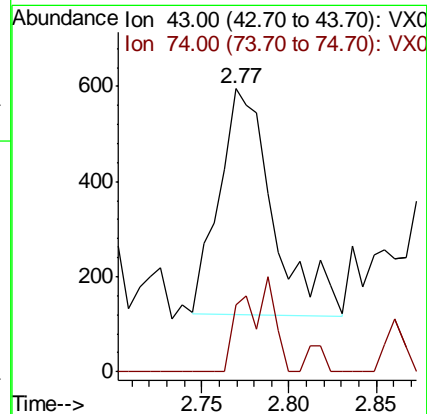
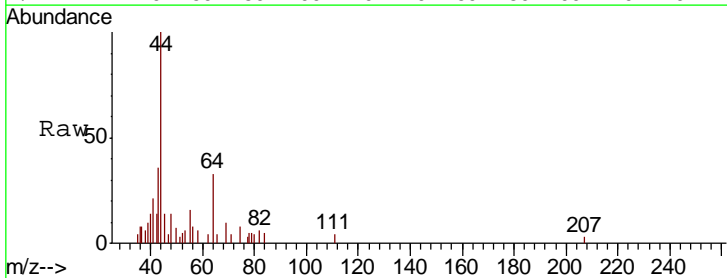
Instrument :
 MSVOA_X
 ClientSampled :
 SA-TW505-4953

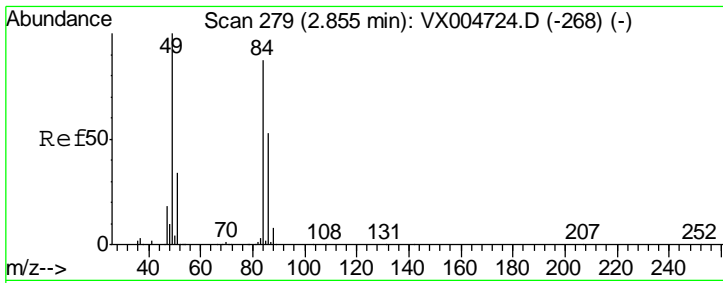
Tgt Ion: 76 Resp: 1905
 Ion Ratio Lower Upper
 76 100
 78 10.3 7.0 10.6



#18
 Methyl Acetate
 Concen: 0.201 ug/l
 RT: 2.77 min Scan# 265
 Delta R.T. -0.01 min
 Lab File: VX004847.D
 Acq: 29 Sep 2018 03:39

Tgt Ion: 43 Resp: 1021
 Ion Ratio Lower Upper
 43 100
 74 24.3 19.4 29.2

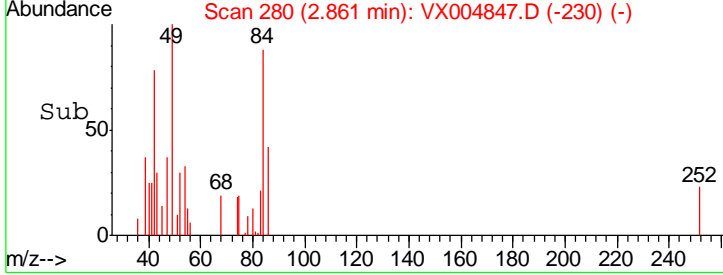
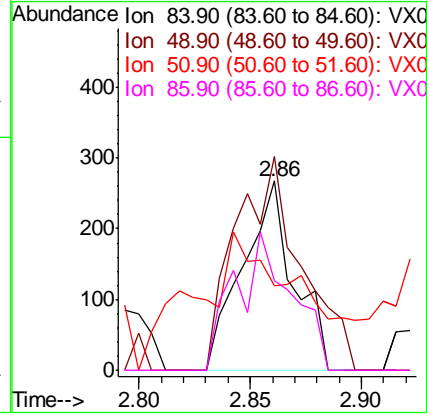
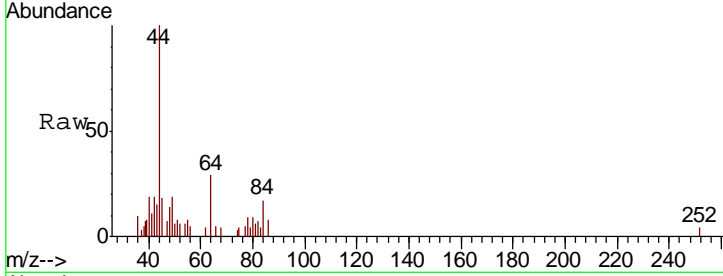




#20
 Methylene Chloride
 Concen: Below Cal
 RT: 2.86 min Scan# 280
 Delta R.T. 0.01 min
 Lab File: VX004847.D
 Acq: 29 Sep 2018 03:39

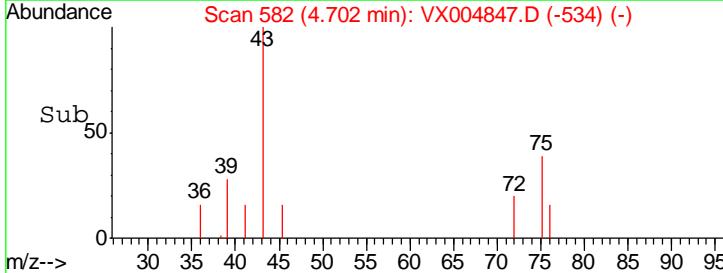
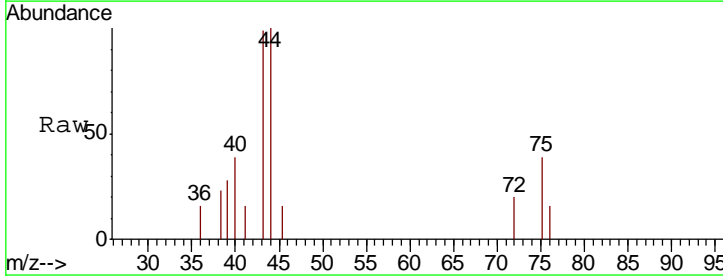
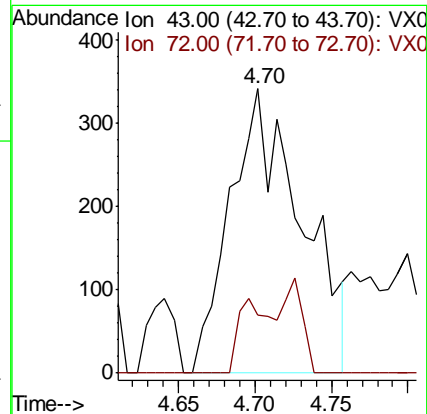
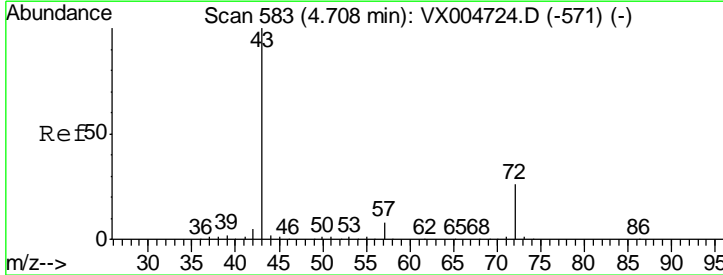
Instrument :
 MSVOA_X
ClientSampled :
 SA-TW505-4953

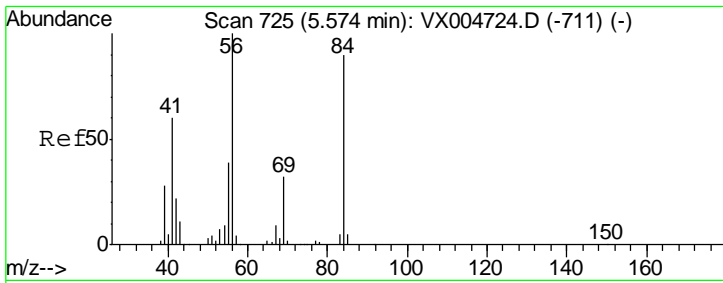
Tgt Ion	Resp	Lower	Upper
84	426		
49	113.1	101.2	151.8
51	17.2	29.5	44.3#
86	47.6	52.3	78.5#



#25
 2-Butanone
 Concen: 0.373 ug/l
 RT: 4.70 min Scan# 582
 Delta R.T. -0.01 min
 Lab File: VX004847.D
 Acq: 29 Sep 2018 03:39

Tgt Ion	Resp	Lower	Upper
43	1103		
72	19.9	22.0	33.0#

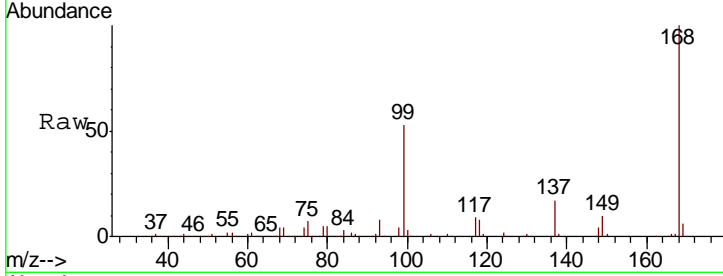




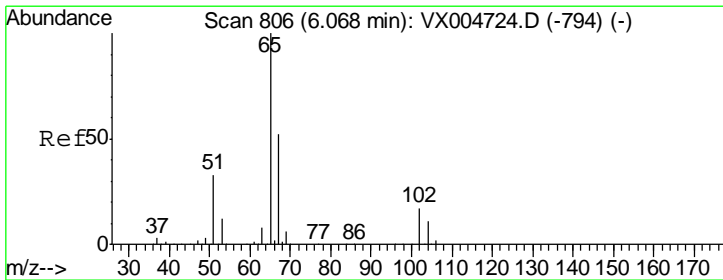
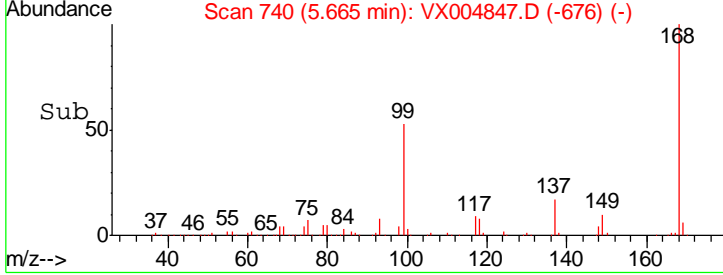
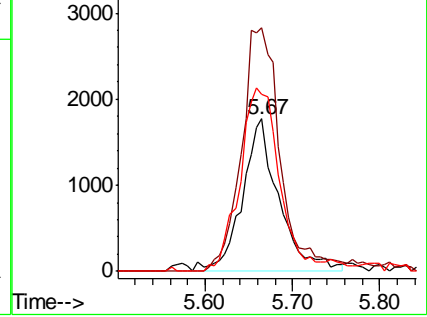
#31
 Cyclohexane
 Concen: 1.178 ug/l
 RT: 5.67 min Scan# 740
 Delta R.T. 0.09 min
 Lab File: VX004847.D
 Acq: 29 Sep 2018 03:39

Instrument :
 MSVOA_X
 ClientSampled :
 SA-TW505-4953

Tgt Ion	Resp	Lower	Upper
56	100		
69	159.9	25.4	38.2#
84	116.4	71.4	107.2#

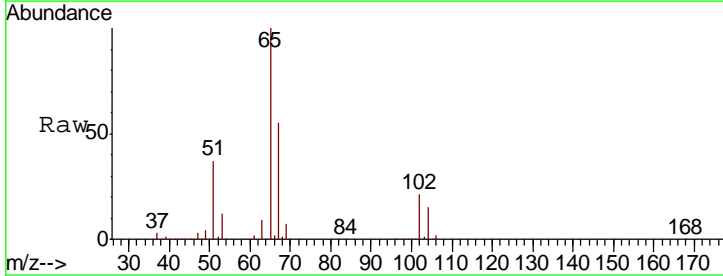


Abundance Ion 56.00 (55.70 to 56.70): VX0
 Ion 69.00 (68.70 to 69.70): VX0
 Ion 84.00 (83.70 to 84.70): VX0

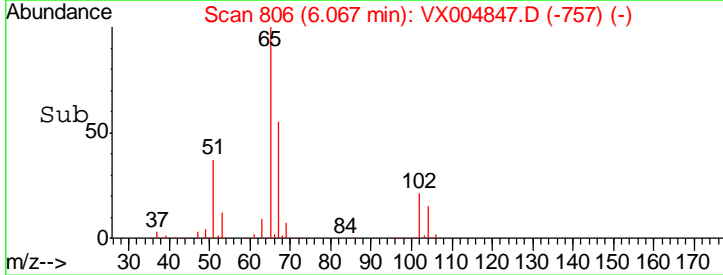
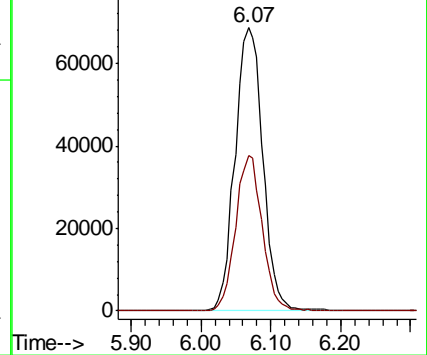


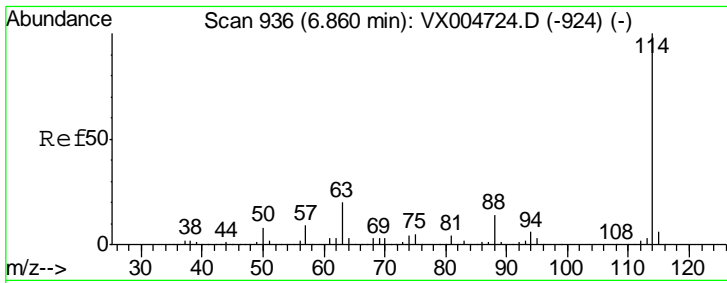
#33
 1,2-Dichloroethane-d4
 Concen: 55.082 ug/l
 RT: 6.07 min Scan# 806
 Delta R.T. -0.00 min
 Lab File: VX004847.D
 Acq: 29 Sep 2018 03:39

Tgt Ion	Resp	Lower	Upper
65	100		
67	52.4	0.0	106.8



Abundance Ion 64.90 (64.60 to 65.60): VX0
 Ion 66.90 (66.60 to 67.60): VX0

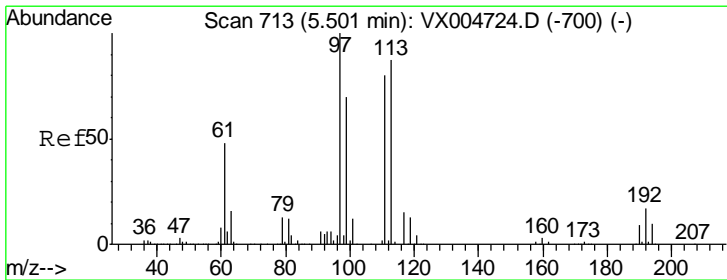
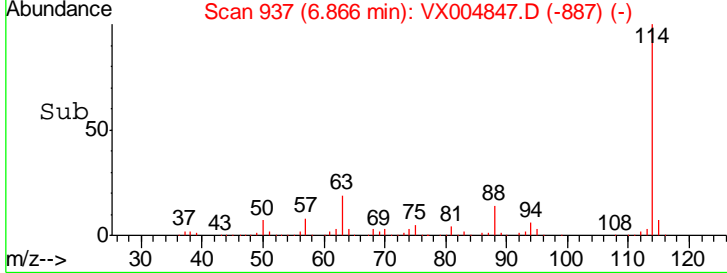
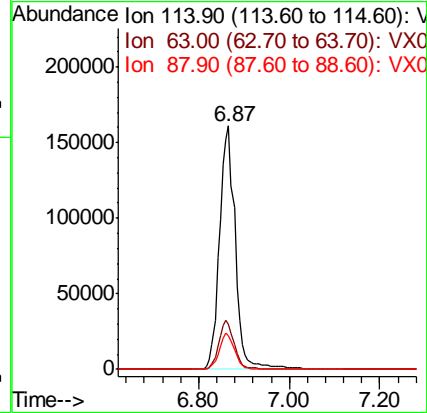
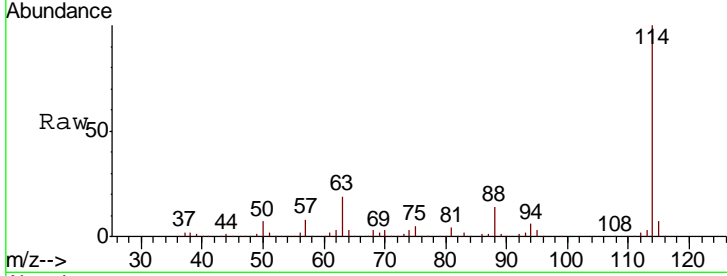




#34
 1,4-Difluorobenzene
 Concen: 50.000 ug/l
 RT: 6.87 min Scan# 937
 Delta R.T. 0.01 min
 Lab File: VX004847.D
 Acq: 29 Sep 2018 03:39

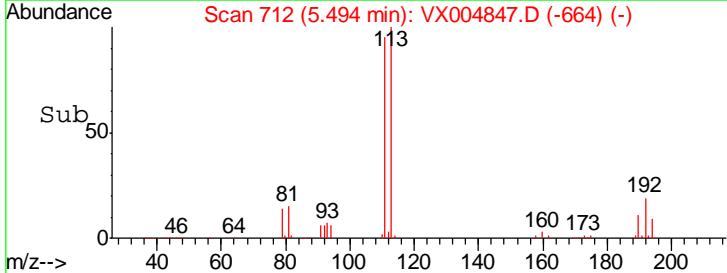
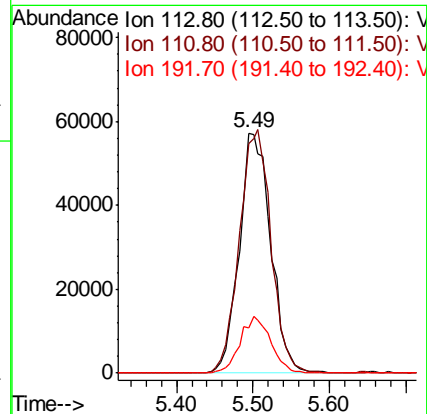
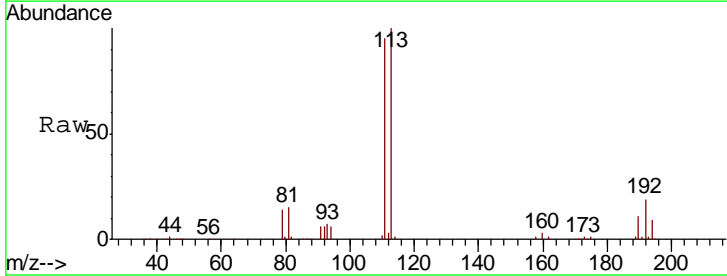
Instrument :
 MSVOA_X
 ClientSampled :
 SA-TW505-4953

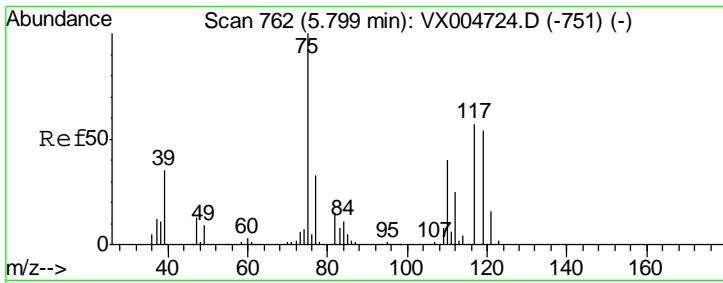
Tgt Ion	Resp	Lower	Upper
114	393948		
63	18.6	0.0	39.0
88	14.0	0.0	30.4



#35
 Dibromofluoromethane
 Concen: 48.779 ug/l
 RT: 5.49 min Scan# 712
 Delta R.T. -0.01 min
 Lab File: VX004847.D
 Acq: 29 Sep 2018 03:39

Tgt Ion	Resp	Lower	Upper
113	162861		
111	102.5	82.4	123.6
192	23.0	19.4	29.2

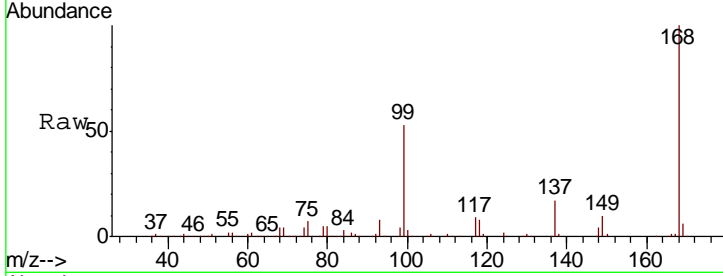




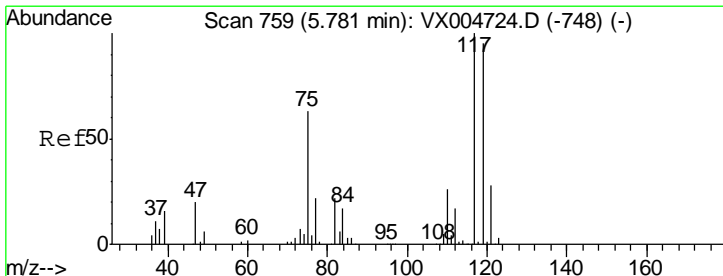
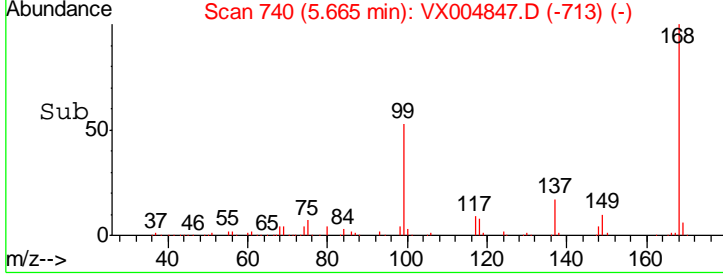
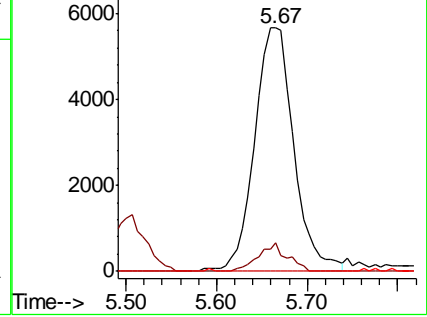
#36
 1,1-Dichloropropene
 Concen: 3.732 ug/l
 RT: 5.67 min Scan# 740
 Delta R.T. -0.13 min
 Lab File: VX004847.D
 Acq: 29 Sep 2018 03:39

Instrument :
 MSVOA_X
 ClientSampled :
 SA-TW505-4953

Tgt Ion	Resp	Lower	Upper
75	17002		
110	8.6	18.0	54.0#
77	0.0	24.6	36.8#

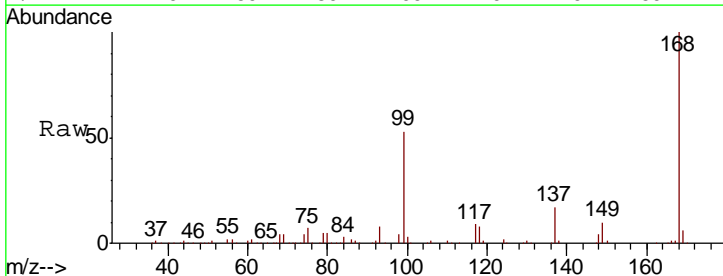


Abundance Ion 74.90 (74.60 to 75.60): VX0
 Ion 109.90 (109.60 to 110.60): V
 Ion 76.90 (76.60 to 77.60): VX0

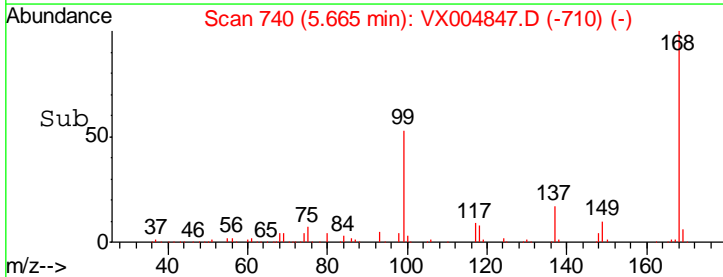
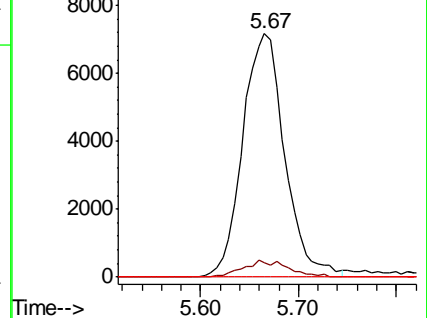


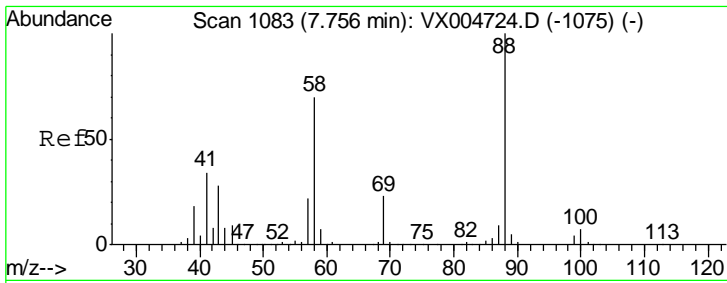
#38
 Carbon Tetrachloride
 Concen: 4.467 ug/l
 RT: 5.67 min Scan# 740
 Delta R.T. -0.12 min
 Lab File: VX004847.D
 Acq: 29 Sep 2018 03:39

Tgt Ion	Resp	Lower	Upper
117	21388		
119	5.9	78.8	118.2#
121	0.0	24.9	37.3#



Abundance Ion 116.80 (116.50 to 117.50): V
 Ion 118.80 (118.50 to 119.50): V
 Ion 120.80 (120.50 to 121.50): V

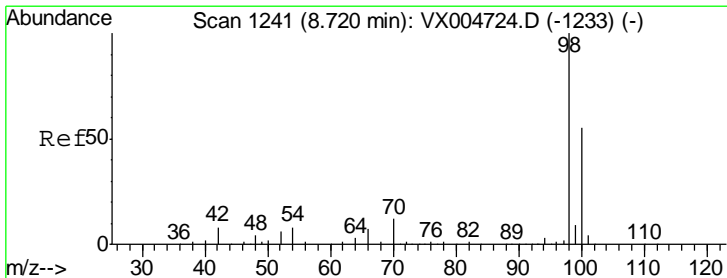
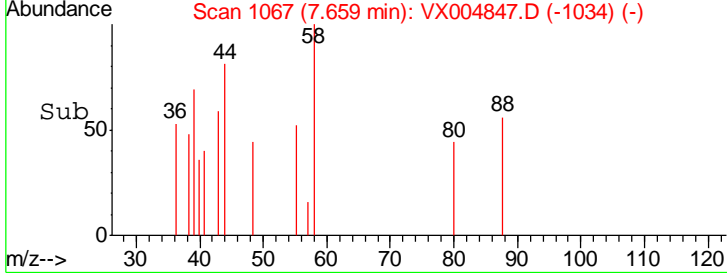
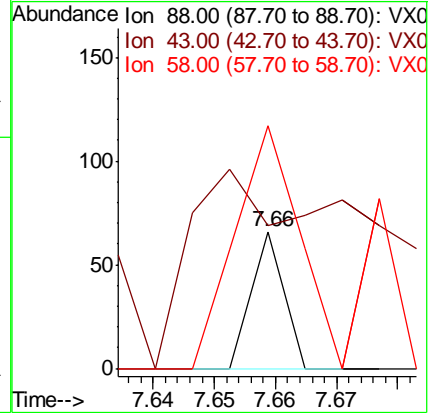
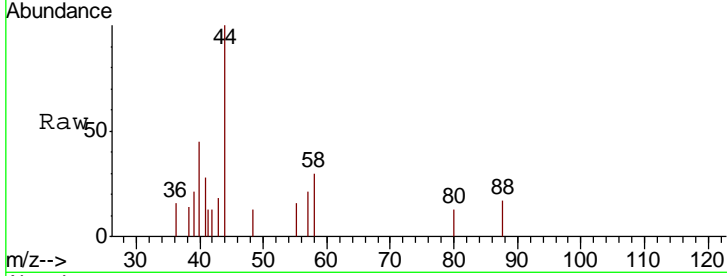




#49
 1,4-Dioxane
 Concen: 0.244 ug/l
 RT: 7.66 min Scan# 1067
 Delta R.T. -0.10 min
 Lab File: VX004847.D
 Acq: 29 Sep 2018 03:39

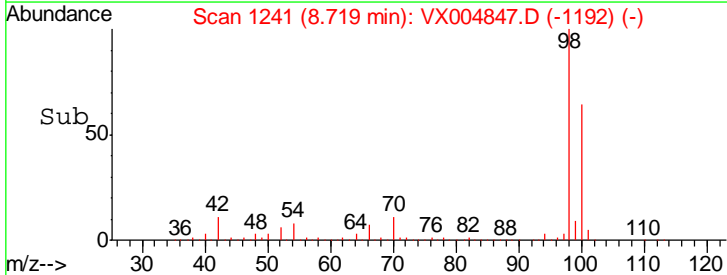
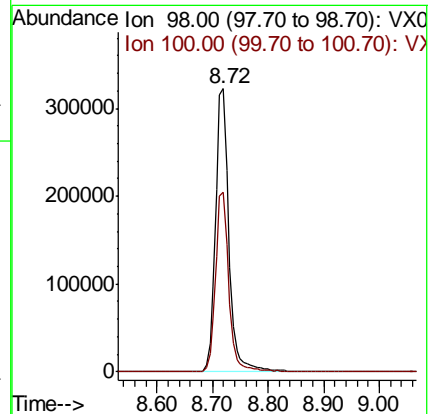
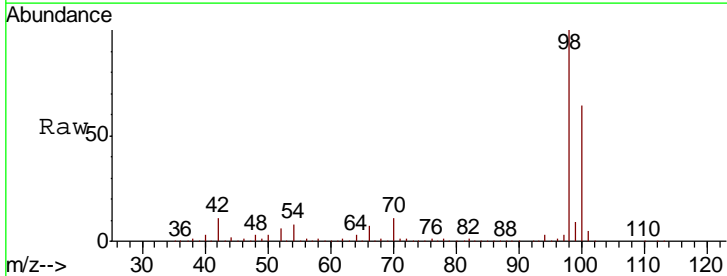
Instrument :
 MSVOA_X
 ClientSampled :
 SA-TW505-4953

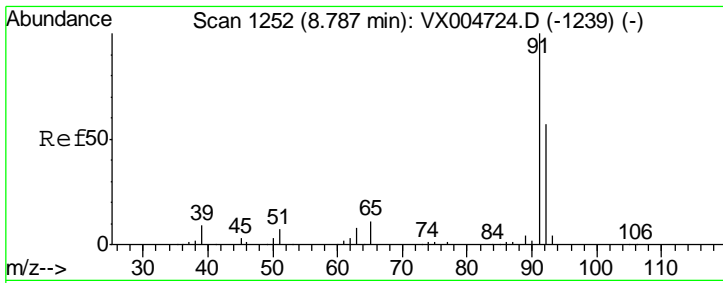
Tgt Ion	Resp	Lower	Upper
88	100		
43	1062.5	24.7	37.1#
58	354.2	55.3	82.9#



#50
 Toluene-d8
 Concen: 49.094 ug/l
 RT: 8.72 min Scan# 1241
 Delta R.T. -0.00 min
 Lab File: VX004847.D
 Acq: 29 Sep 2018 03:39

Tgt Ion	Resp	Lower	Upper
98	100		
100	63.6	52.9	79.3

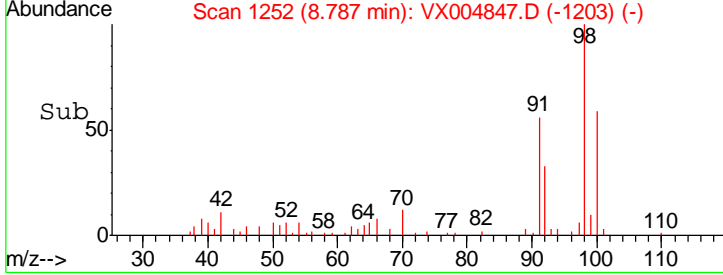
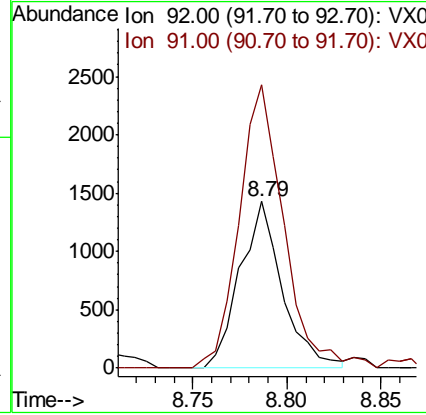
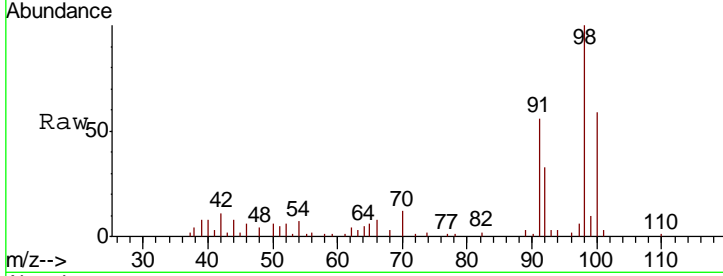




#52
 Toluene
 Concen: 0.285 ug/l
 RT: 8.79 min Scan# 1252
 Delta R.T. -0.00 min
 Lab File: VX004847.D
 Acq: 29 Sep 2018 03:39

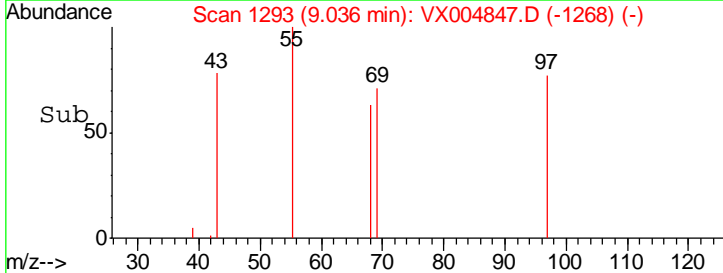
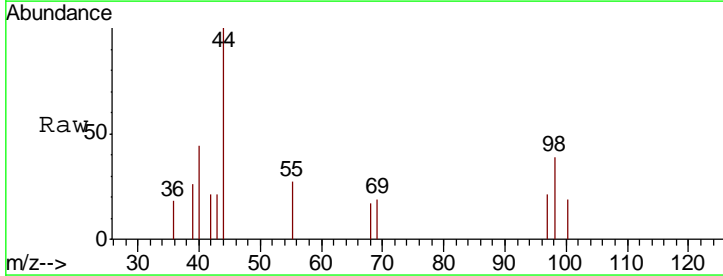
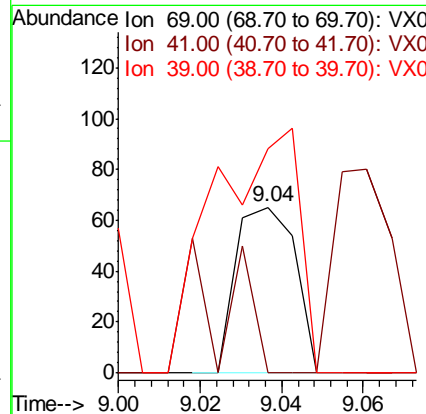
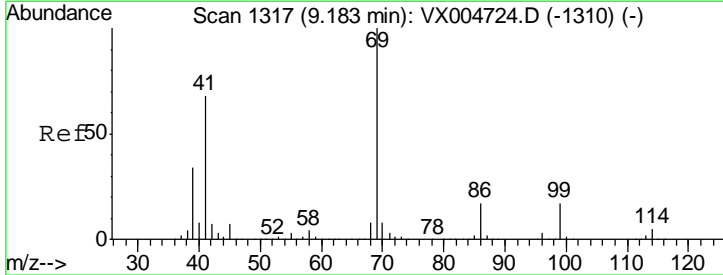
Instrument : MSVOA_X
 ClientSampled : SA-TW505-4953

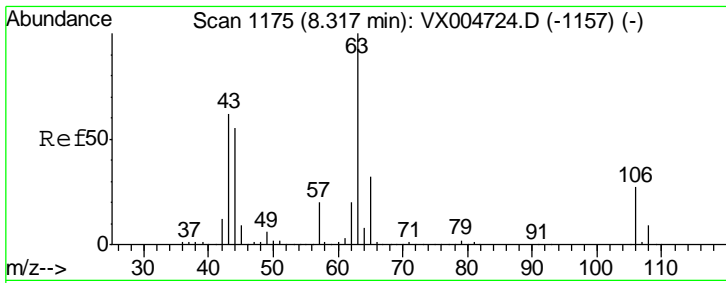
Tgt Ion	Resp	Lower	Upper
92	2236		
91	178.2	136.4	204.6



#56
 Ethyl methacrylate
 Concen: 2.873 ug/l
 RT: 9.04 min Scan# 1293
 Delta R.T. -0.15 min
 Lab File: VX004847.D
 Acq: 29 Sep 2018 03:39

Tgt Ion	Resp	Lower	Upper
69	66		
41	0.0	51.0	76.4#
39	212.1	26.1	39.1#

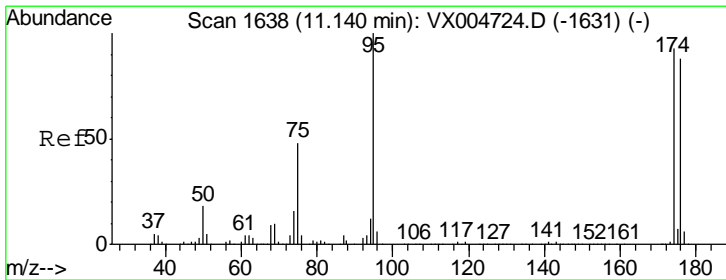
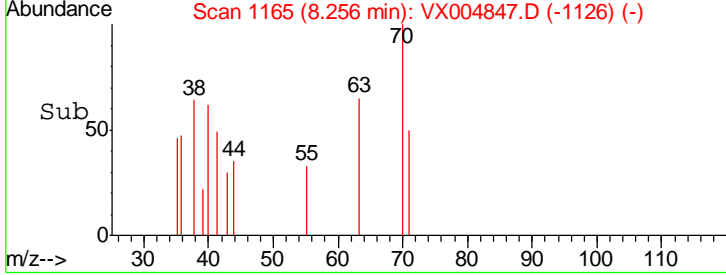
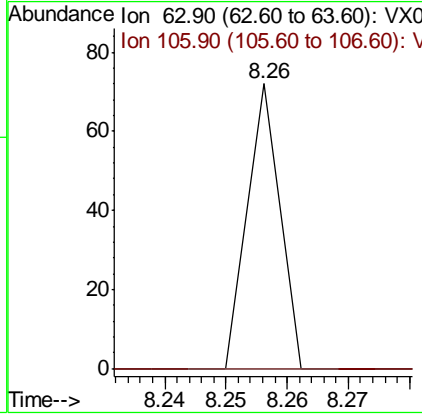
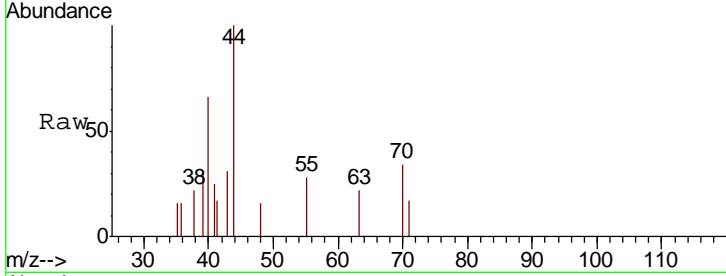




#58
 2-Chloroethyl Vinyl ether
 Concen: 14.250 ug/l
 RT: 8.26 min Scan# 1165
 Delta R.T. -0.06 min
 Lab File: VX004847.D
 Acq: 29 Sep 2018 03:39

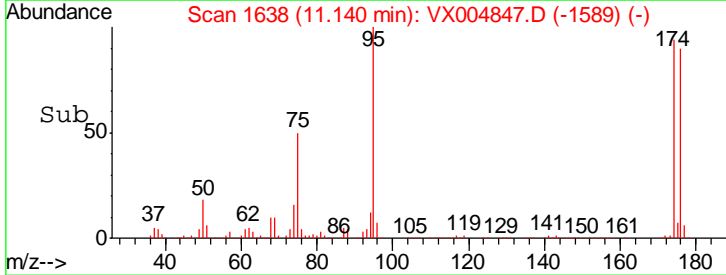
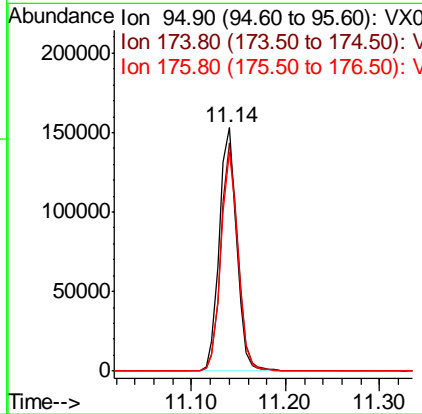
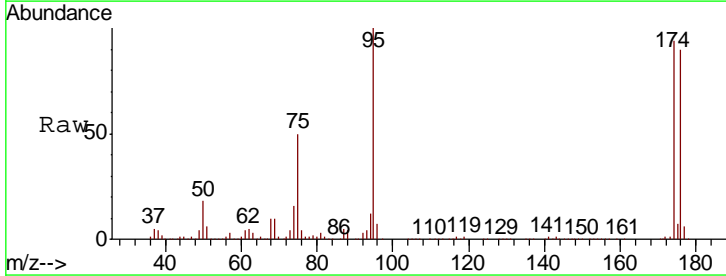
Instrument : MSVOA_X
 ClientSampled : SA-TW505-4953

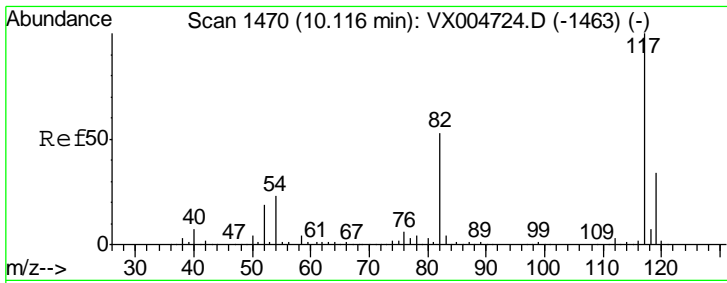
Tgt Ion	Resp	Lower	Upper
63	100		
106	0.0	23.9	35.9#



#62
 4-Bromofluorobenzene
 Concen: 49.327 ug/l
 RT: 11.14 min Scan# 1638
 Delta R.T. -0.00 min
 Lab File: VX004847.D
 Acq: 29 Sep 2018 03:39

Tgt Ion	Resp	Lower	Upper
95	100		
174	92.0	0.0	185.2
176	88.2	0.0	178.6

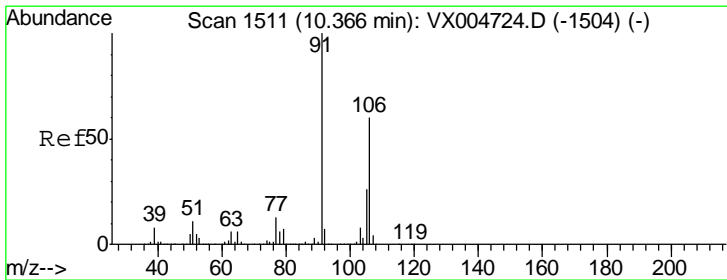
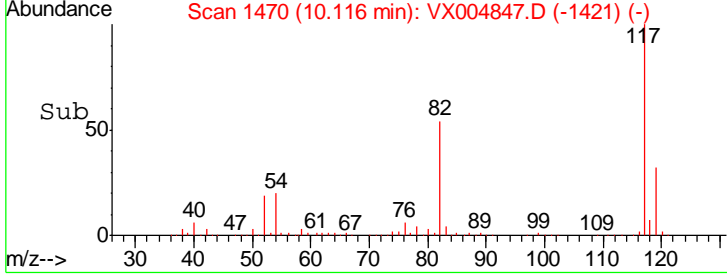
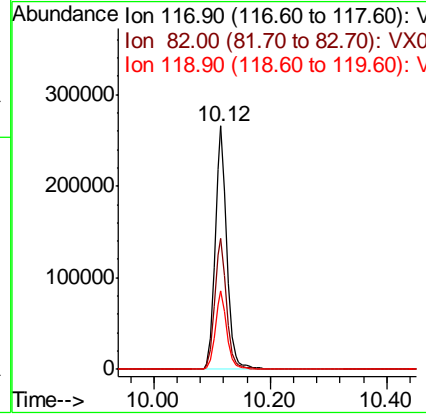
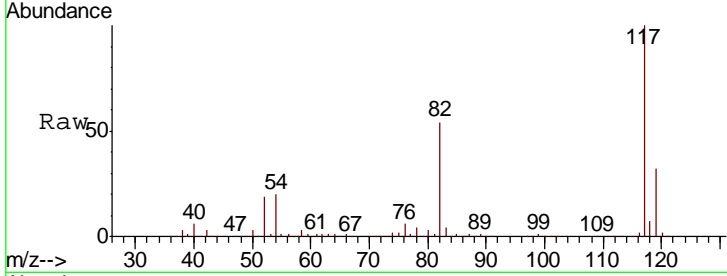




#63
 Chlorobenzene-d5
 Concen: 50.000 ug/l
 RT: 10.12 min Scan# 1470
 Delta R.T. -0.00 min
 Lab File: VX004847.D
 Acq: 29 Sep 2018 03:39

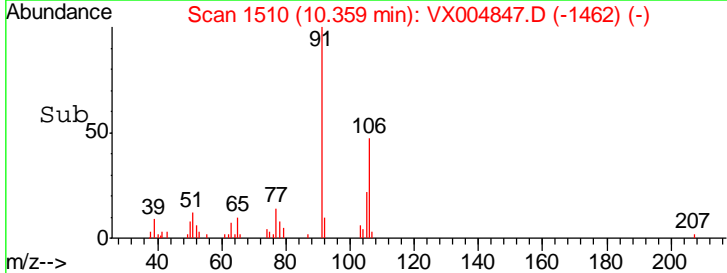
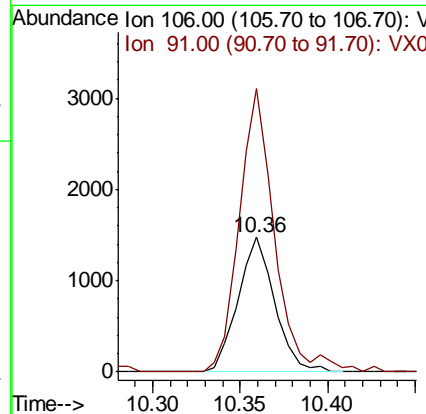
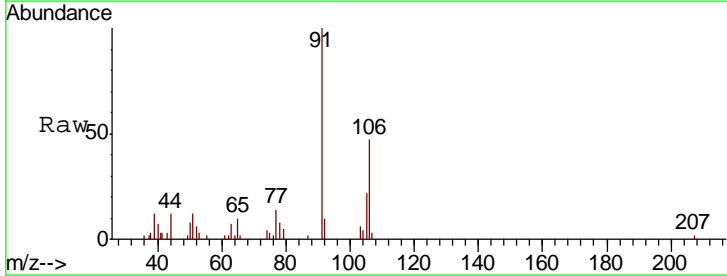
Instrument :
 MSVOA_X
 ClientSampled :
 SA-TW505-4953

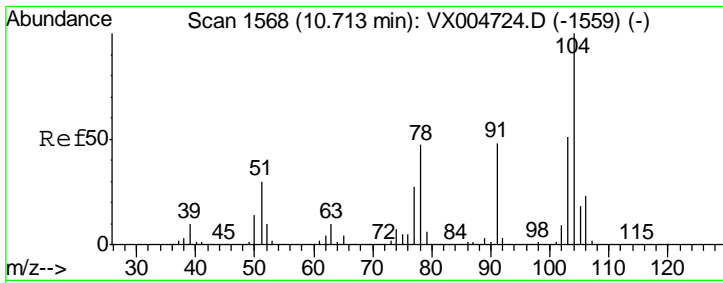
Tgt Ion	Resp	Lower	Upper
117	368363		
82	54.0	47.8	71.6
119	32.4	29.3	43.9



#68
 m/p-Xylenes
 Concen: 0.366 ug/l
 RT: 10.36 min Scan# 1510
 Delta R.T. -0.01 min
 Lab File: VX004847.D
 Acq: 29 Sep 2018 03:39

Tgt Ion	Resp	Lower	Upper
106	2146		
91	203.4	157.1	235.7

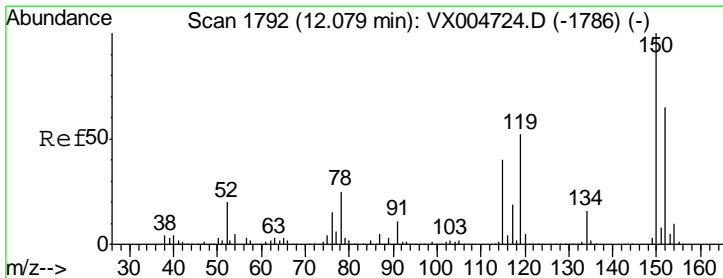
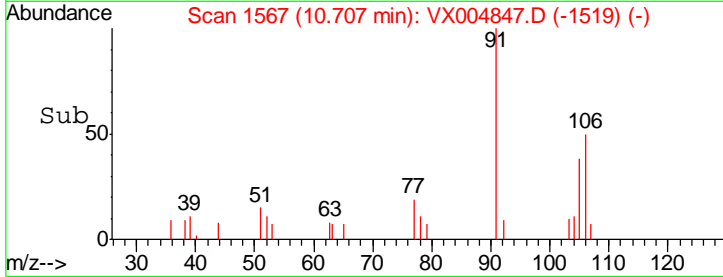
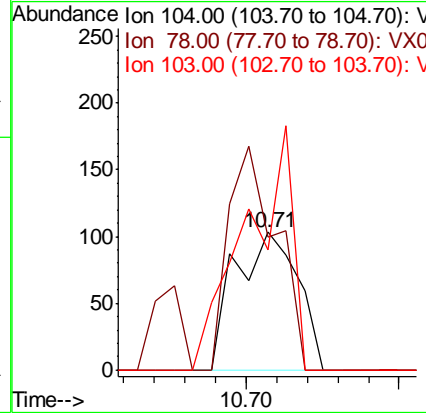
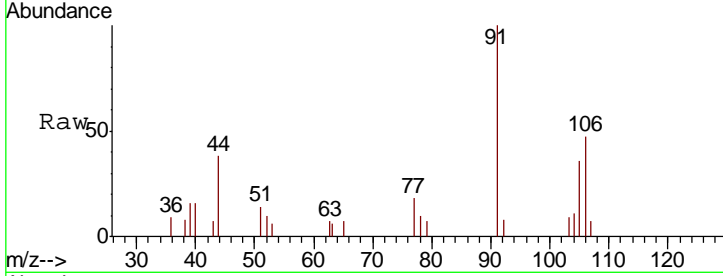




#70
 Styrene
 Concen: 2.154 ug/l
 RT: 10.71 min Scan# 1567
 Delta R.T. -0.01 min
 Lab File: VX004847.D
 Acq: 29 Sep 2018 03:39

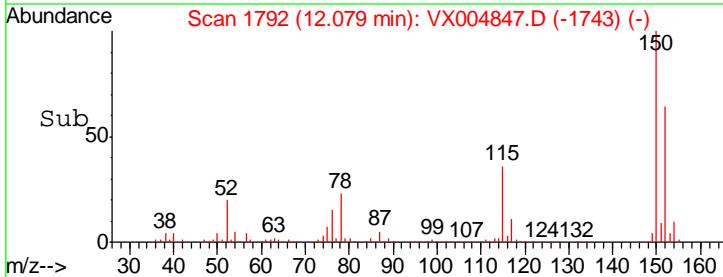
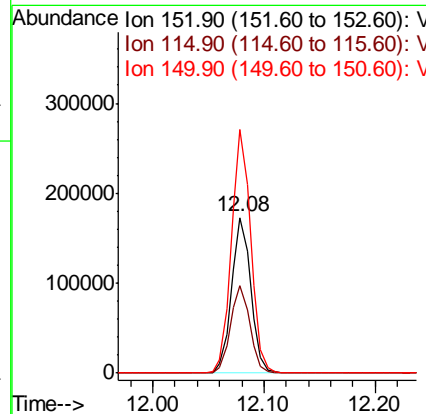
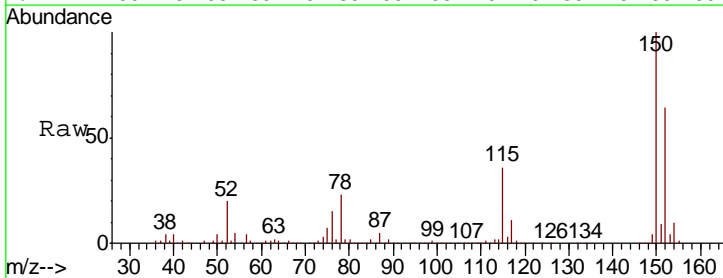
Instrument :
 MSVOA_X
 ClientSampled :
 SA-TW505-4953

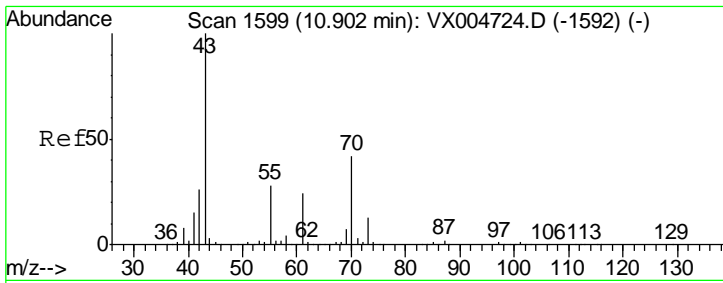
Tgt Ion	Resp	Lower	Upper
104	147		
78	123.8	37.4	56.0#
103	130.6	43.8	65.6#



#72
 1,4-Dichlorobenzene-d4
 Concen: 50.000 ug/l
 RT: 12.08 min Scan# 1792
 Delta R.T. -0.00 min
 Lab File: VX004847.D
 Acq: 29 Sep 2018 03:39

Tgt Ion	Resp	Lower	Upper
152	206298		
115	56.7	39.0	117.0
150	157.2	0.0	351.0

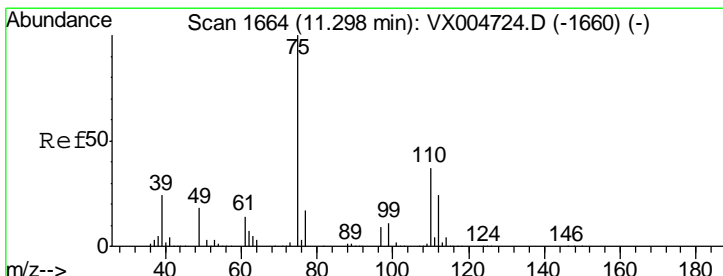
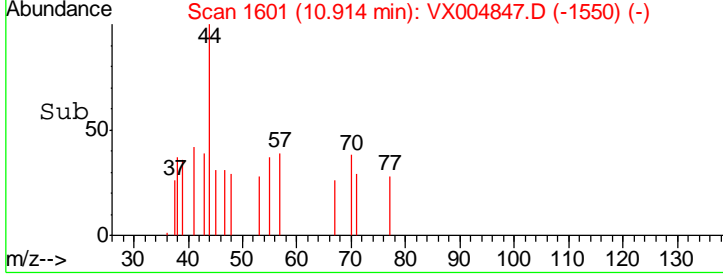
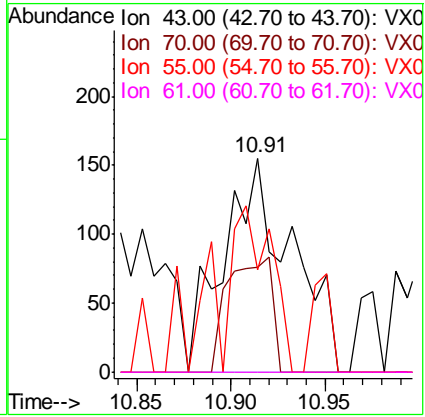
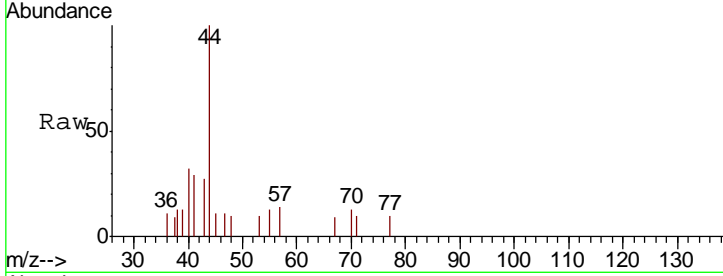




#74
 N-amyl acetate
 Concen: 1.801 ug/l
 RT: 10.91 min Scan# 1601
 Delta R.T. 0.01 min
 Lab File: VX004847.D
 Acq: 29 Sep 2018 03:39

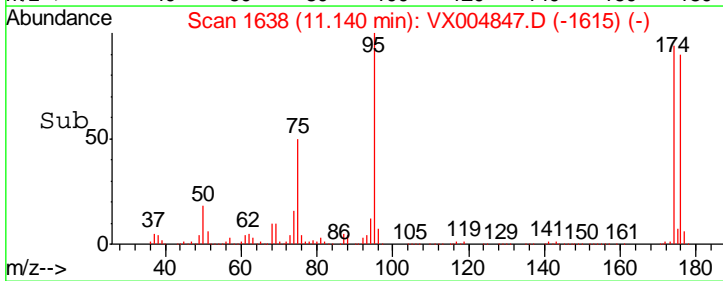
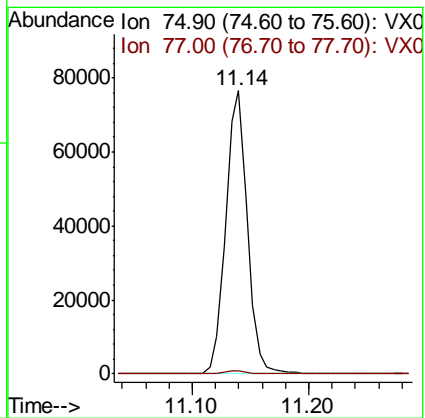
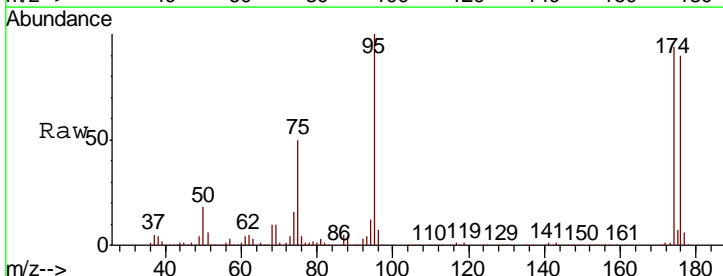
Instrument : MSVOA_X
 ClientSampled : SA-TW505-4953

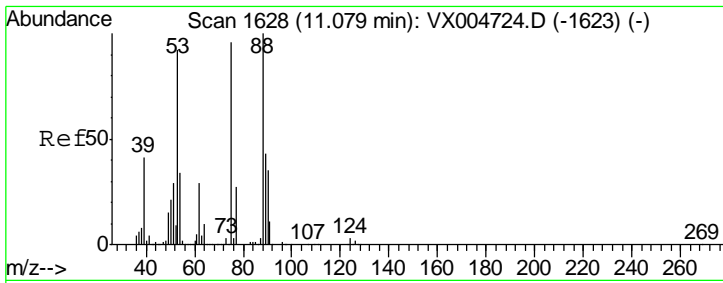
Tgt Ion	Resp	Lower	Upper
43	391		
70	34.3	37.4	56.0#
55	43.5	21.8	32.8#
61	0.0	20.6	30.8#



#76
 1,2,3-Trichloropropane
 Concen: 21.259 ug/l
 RT: 11.14 min Scan# 1638
 Delta R.T. -0.16 min
 Lab File: VX004847.D
 Acq: 29 Sep 2018 03:39

Tgt Ion	Resp	Lower	Upper
75	98300		
77	1.4	20.2	60.6#

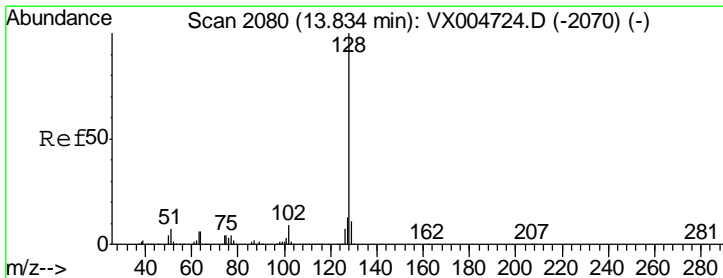
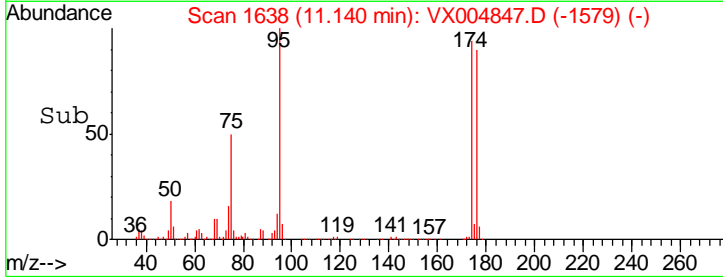
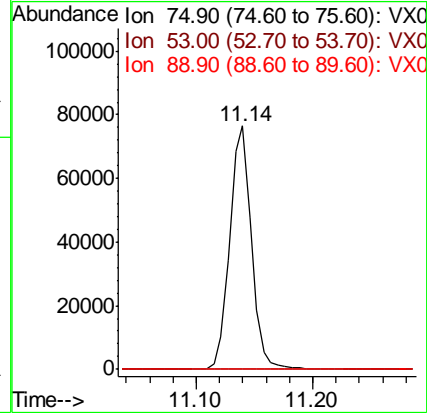
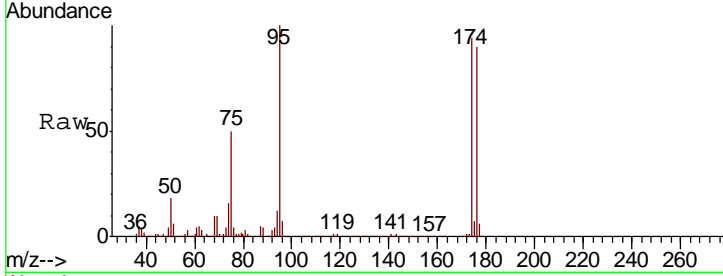




#81
 trans-1,4-Dichloro-2-butene
 Concen: 57.665 ug/l
 RT: 11.14 min Scan# 1638
 Delta R.T. 0.06 min
 Lab File: VX004847.D
 Acq: 29 Sep 2018 03:39

Instrument :
 MSVOA_X
 ClientSampled :
 SA-TW505-4953

Tgt Ion	Resp	Lower	Upper
75	100		
53	0.3	80.1	120.1#
89	0.0	37.2	55.8#



#95
 Naphthalene
 Concen: 0.780 ug/l
 RT: 13.83 min Scan# 2080
 Delta R.T. 0.00 min
 Lab File: VX004847.D
 Acq: 29 Sep 2018 03:39

Tgt Ion	Resp	Lower	Upper
128	100		
127	12.1	10.2	15.2
129	17.3	8.6	12.8#

