

Data Path : Z:\VOASRV\HPCHEM1\MSVOA X\DATA\VX092818\
 Data File : VX004853.D
 Acq On : 29 Sep 2018 06:19
 Operator : JC/MD
 Sample : J5134-17
 Misc : 5.0mL/MSVOA X/WATER
 ALS Vial : 45 Sample Multiplier: 1

Instrument :
 MSVOA_X
 ClientSampleId :
 SA-DUP02-20180925

Quant Time: Oct 01 01:14:43 2018
 Quant Method : Z:\VOASRV\HPCHEM1\MSVOA_X\METHOD\82X092618W.M
 Quant Title : SW846 8260
 QLast Update : Wed Sep 26 14:17:02 2018
 Response via : Initial Calibration

Internal Standards	R.T.	QIon	Response	Conc	Units	Dev(Min)
1) Pentafluorobenzene	5.67	168	230760	50.00	ug/l	0.00
34) 1,4-Difluorobenzene	6.86	114	378901	50.00	ug/l	0.00
63) Chlorobenzene-d5	10.12	117	374906	50.00	ug/l	0.00
72) 1,4-Dichlorobenzene-d4	12.08	152	210484	50.00	ug/l	0.00

System Monitoring Compounds

33) 1,2-Dichloroethane-d4	6.07	65	182823	55.46	ug/l	0.00
Spiked Amount	50.000		Recovery	=	110.92%	
35) Dibromofluoromethane	5.50	113	152482	47.48	ug/l	0.00
Spiked Amount	50.000		Recovery	=	94.96%	
50) Toluene-d8	8.72	98	551820	51.69	ug/l	0.00
Spiked Amount	50.000		Recovery	=	103.38%	
62) 4-Bromofluorobenzene	11.14	95	200000	52.00	ug/l	0.00
Spiked Amount	50.000		Recovery	=	104.00%	

Target Compounds

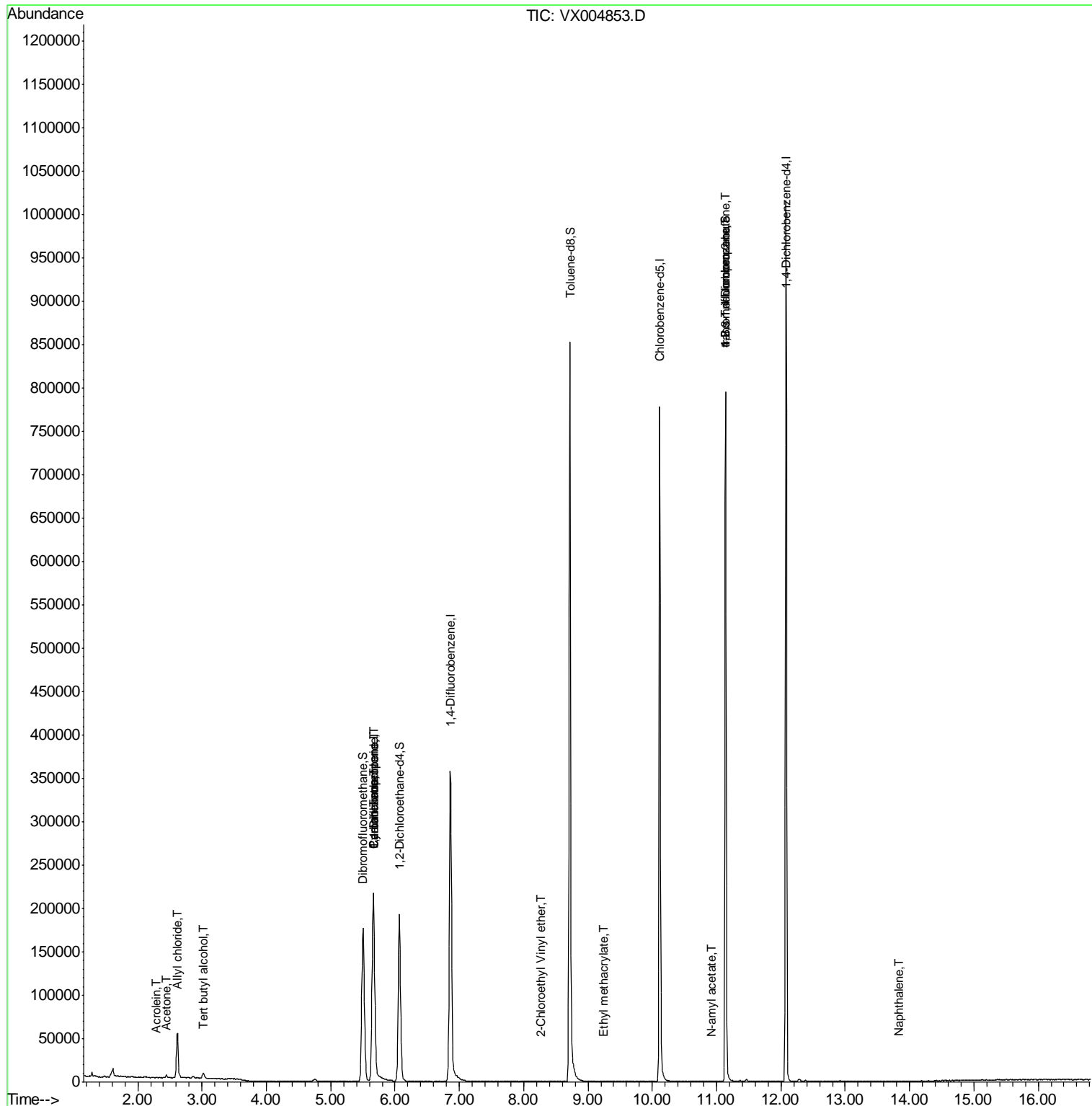
					Qvalue	
6) Chloroethane	1.69	64	381	Below Cal	#	63
11) Tert butyl alcohol	3.03	59	4155	4.508	ug/l #	83
13) Acrolein	2.29	56	162	0.247	ug/l #	22
14) Allyl chloride	2.61	41	5396	0.989	ug/l #	67
16) Acetone	2.45	43	3490	1.813	ug/l	96
20) Methylene Chloride	2.86	84	628	Below Cal		93
31) Cyclohexane	5.67	56	4291	1.023	ug/l #	1
36) 1,1-Dichloropropene	5.66	75	15960	3.643	ug/l #	50
38) Carbon Tetrachloride	5.67	117	19824	4.304	ug/l #	16
56) Ethyl methacrylate	9.24	69	22	2.866	ug/l #	1
58) 2-Chloroethyl Vinyl ether	8.26	63	19	14.248	ug/l #	45
74) N-amyl acetate	10.91	43	200	1.774	ug/l #	40
76) 1,2,3-Trichloropropane	11.14	75	99755	21.145	ug/l #	37
80) 1,3,5-Trimethylbenzene	11.44	105	73	Below Cal	#	27
81) trans-1,4-Dichloro-2-buten	11.14	75	99755	57.365	ug/l #	10
84) 1,2,4-Trimethylbenzene	11.80	105	180	Below Cal	#	30
95) Naphthalene	13.83	128	249	0.734	ug/l #	70

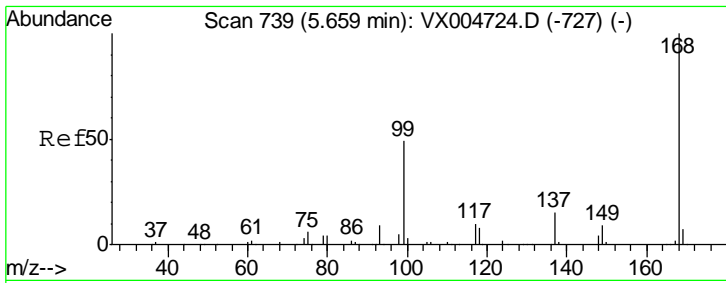
(#) = qualifier out of range (m) = manual integration (+) = signals summed

Data Path : Z:\VOASRV\HPCHEM1\MSVOA X\DATA\VX092818\
 Data File : VX004853.D
 Acq On : 29 Sep 2018 06:19
 Operator : JC/MD
 Sample : J5134-17
 Misc : 5.0mL/MSVOA X/WATER
 ALS Vial : 45 Sample Multiplier: 1

Instrument :
 MSVOA_X
 Client Sample ID :
 SA-DUP02-20180925

Quant Time: Oct 01 01:14:43 2018
 Quant Method : Z:\VOASRV\HPCHEM1\MSVOA_X\METHOD\82X092618W.M
 Quant Title : SW846 8260
 QLast Update : Wed Sep 26 14:17:02 2018
 Response via : Initial Calibration

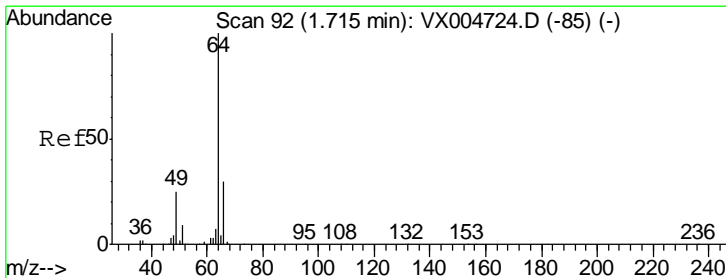
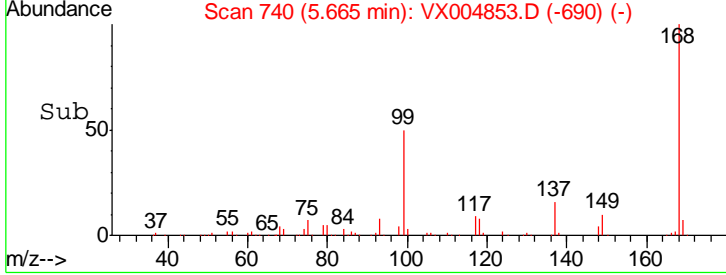
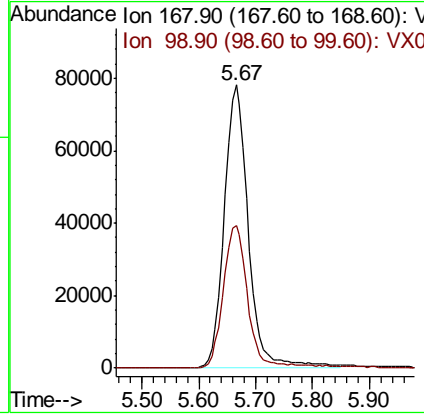
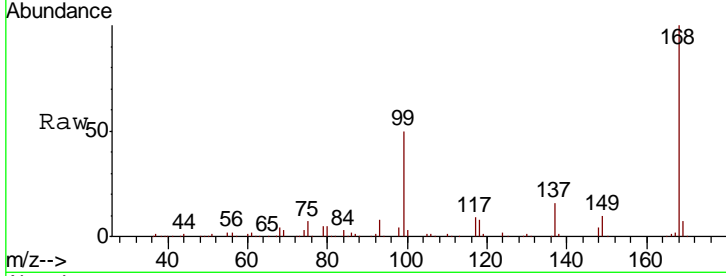




#1
 Pentafluorobenzene
 Concen: 50.000 ug/l
 RT: 5.67 min Scan# 740
 Delta R.T. 0.01 min
 Lab File: VX004853.D
 Acq: 29 Sep 2018 06:19

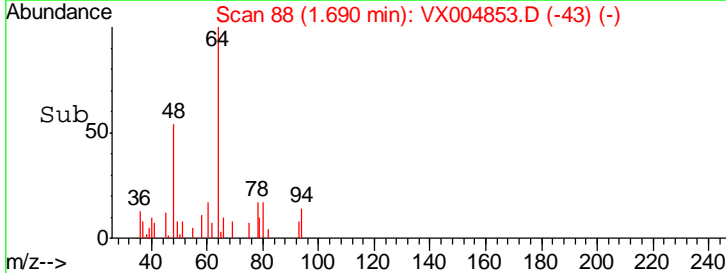
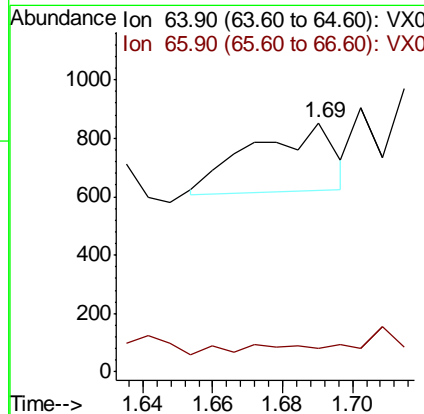
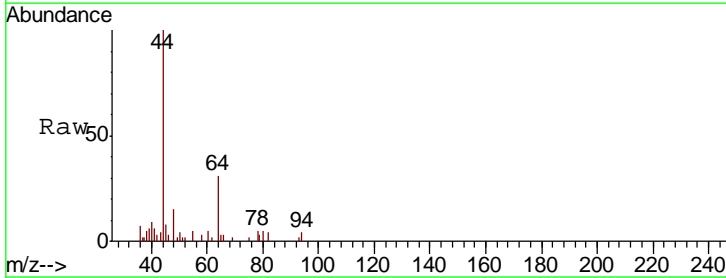
Instrument :
 MSVOA_X
 ClientSampleId :
 SA-DUP02-20180925

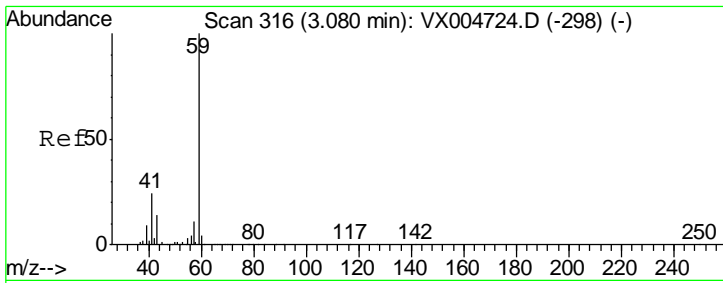
Tgt Ion: 168 Resp: 230760
 Ion Ratio Lower Upper
 168 100
 99 50.2 39.9 59.9



#6
 Chloroethane
 Concen: Below Cal
 RT: 1.69 min Scan# 88
 Delta R.T. -0.02 min
 Lab File: VX004853.D
 Acq: 29 Sep 2018 06:19

Tgt Ion: 64 Resp: 381
 Ion Ratio Lower Upper
 64 100
 66 10.5 24.6 36.8#

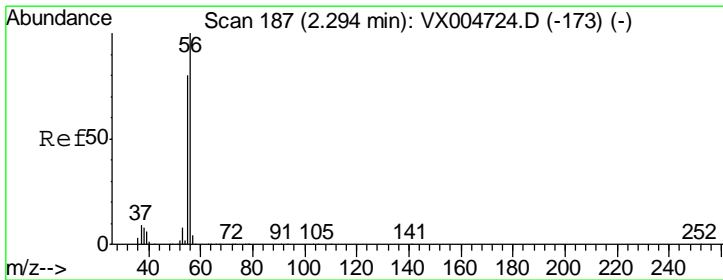
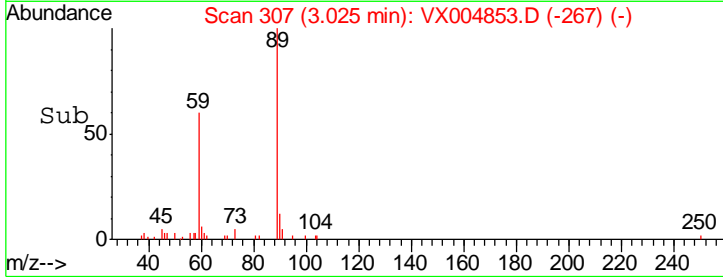
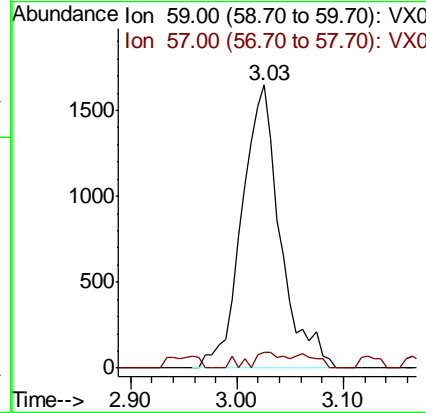
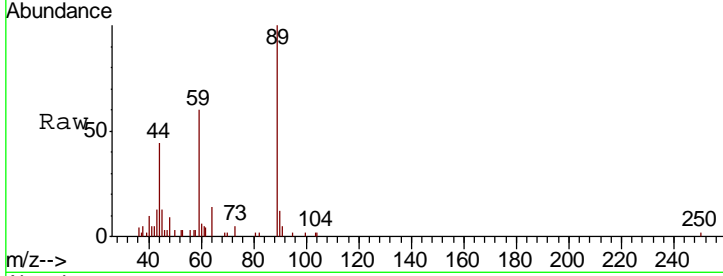




#11
 Tert butyl alcohol
 Concen: 4.508 ug/l
 RT: 3.03 min Scan# 307
 Delta R.T. -0.05 min
 Lab File: VX004853.D
 Acq: 29 Sep 2018 06:19

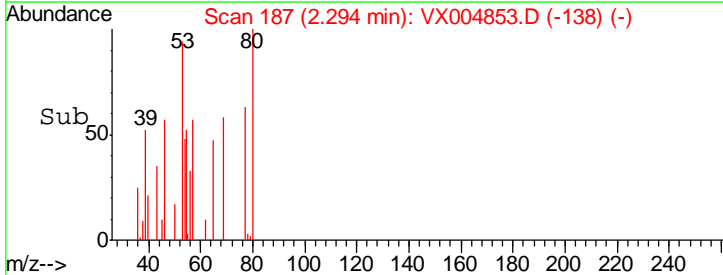
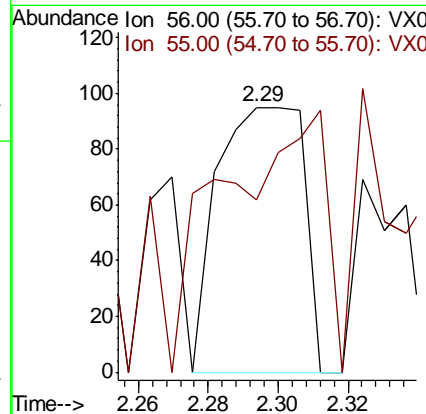
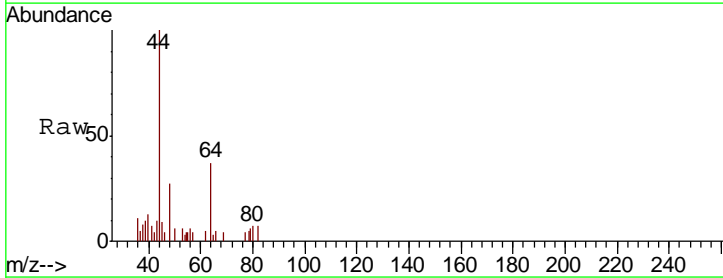
Instrument :
 MSVOA_X
 ClientSampled :
 SA-DUP02-20180925

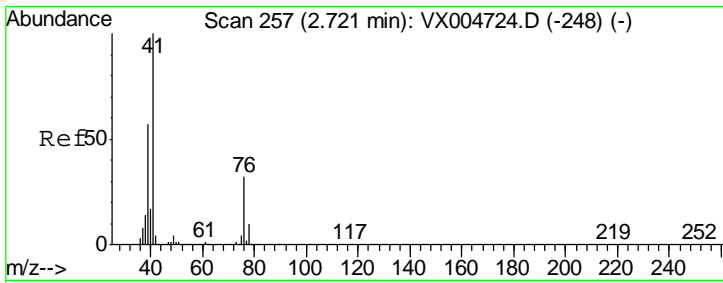
Tgt Ion: 59 Resp: 4155
 Ion Ratio Lower Upper
 59 100
 57 4.0 8.2 12.4#



#13
 Acrolein
 Concen: 0.247 ug/l
 RT: 2.29 min Scan# 187
 Delta R.T. -0.00 min
 Lab File: VX004853.D
 Acq: 29 Sep 2018 06:19

Tgt Ion: 56 Resp: 162
 Ion Ratio Lower Upper
 56 100
 55 131.5 54.7 82.1#

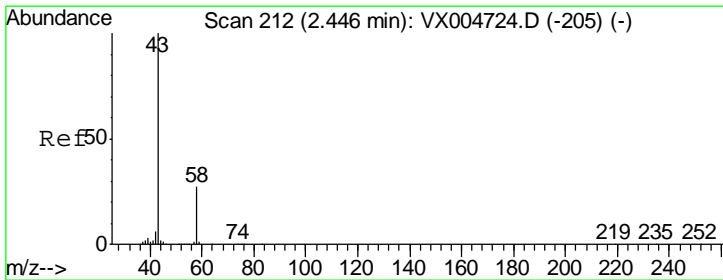
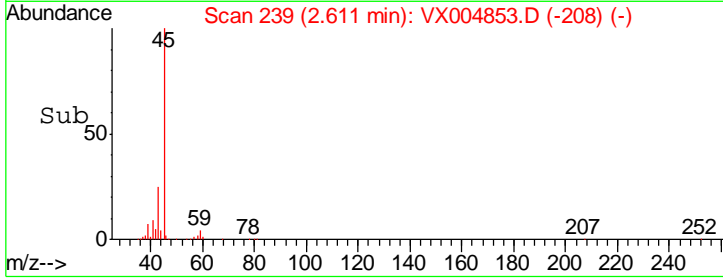
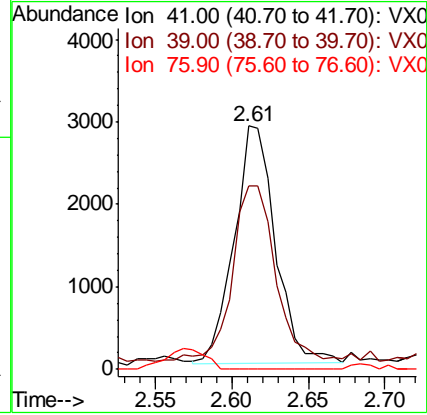
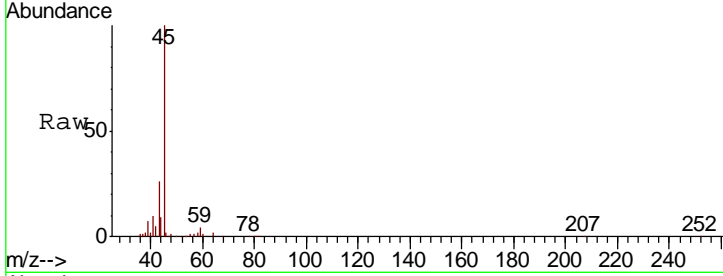




#14
 Allyl chloride
 Concen: 0.989 ug/l
 RT: 2.61 min Scan# 239
 Delta R.T. -0.11 min
 Lab File: VX004853.D
 Acq: 29 Sep 2018 06:19

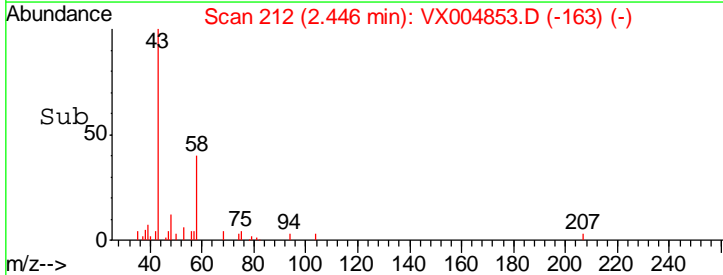
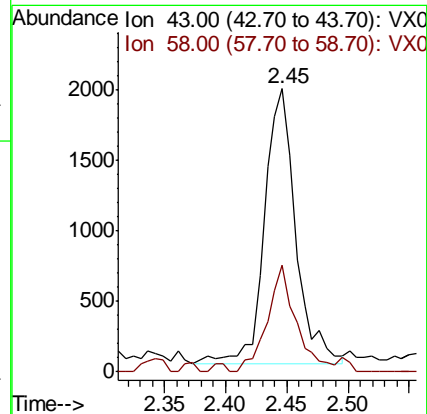
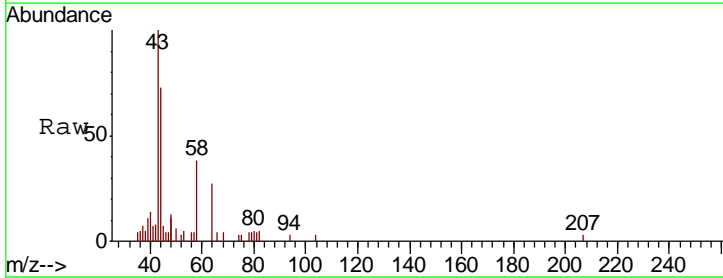
Instrument :
 MSVOA_X
 ClientSampleId :
 SA-DUP02-20180925

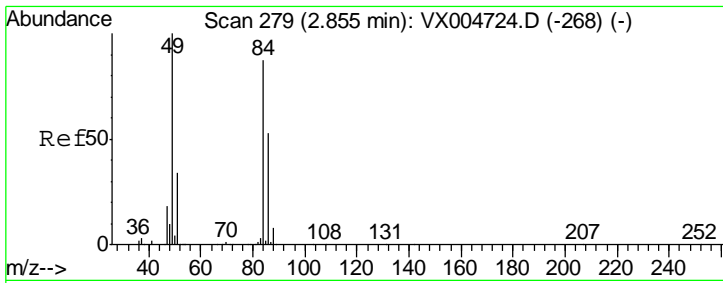
Tgt Ion	Resp	Lower	Upper
41	100		
39	76.0	48.9	73.3#
76	0.0	26.7	40.1#



#16
 Acetone
 Concen: 1.813 ug/l
 RT: 2.45 min Scan# 212
 Delta R.T. -0.00 min
 Lab File: VX004853.D
 Acq: 29 Sep 2018 06:19

Tgt Ion	Resp	Lower	Upper
43	100		
58	35.2	26.2	39.4

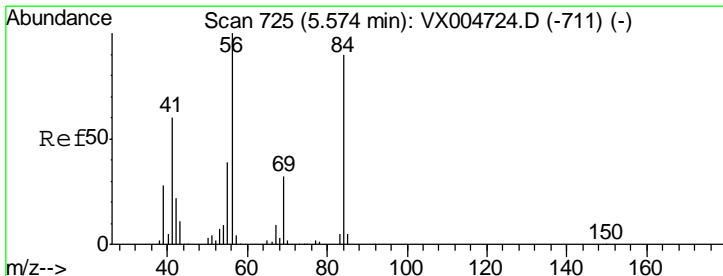
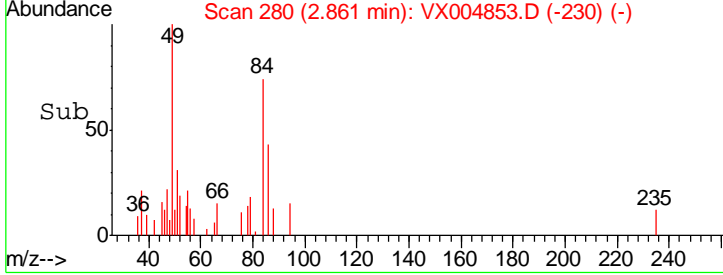
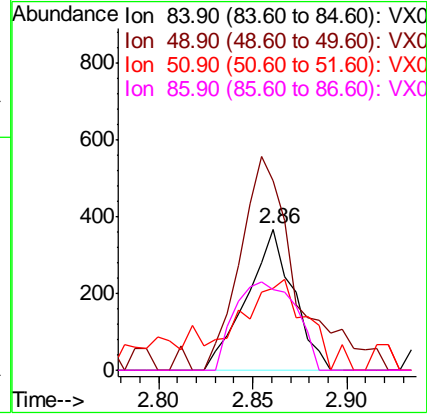
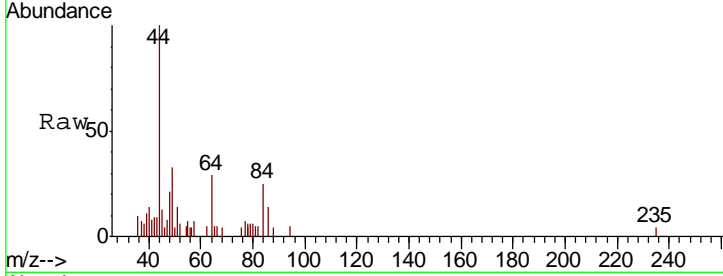




#20
 Methylene Chloride
 Concen: Below Cal
 RT: 2.86 min Scan# 280
 Delta R.T. 0.01 min
 Lab File: VX004853.D
 Acq: 29 Sep 2018 06:19

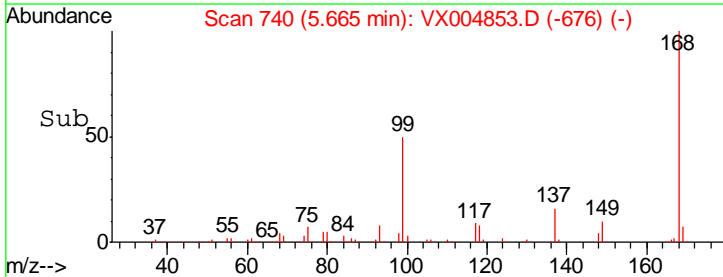
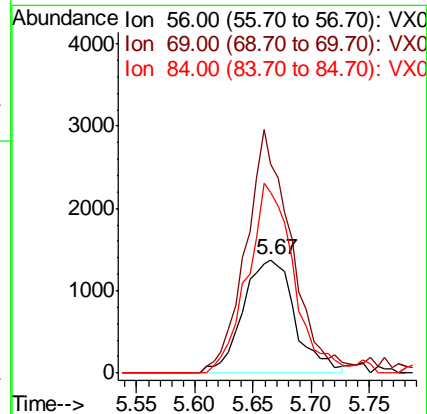
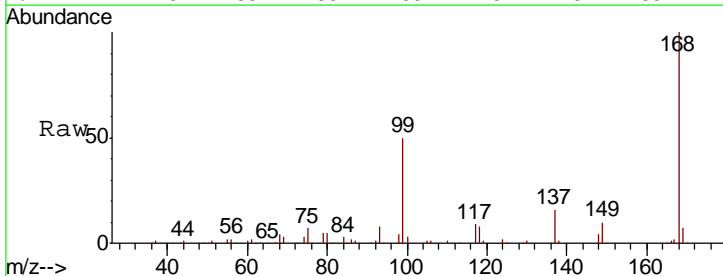
Instrument :
 MSVOA_X
 ClientSampled :
 SA-DUP02-20180925

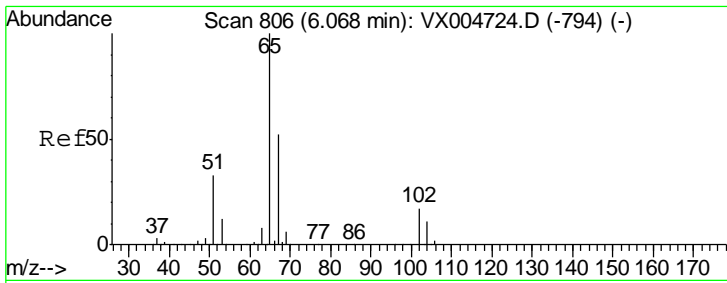
Tgt Ion	Resp	Lower	Upper
84	628		
49	134.2	101.2	151.8
51	39.9	29.5	44.3
86	57.3	52.3	78.5



#31
 Cyclohexane
 Concen: 1.023 ug/l
 RT: 5.67 min Scan# 740
 Delta R.T. 0.09 min
 Lab File: VX004853.D
 Acq: 29 Sep 2018 06:19

Tgt Ion	Resp	Lower	Upper
56	4291		
69	183.6	25.4	38.2#
84	159.3	71.4	107.2#

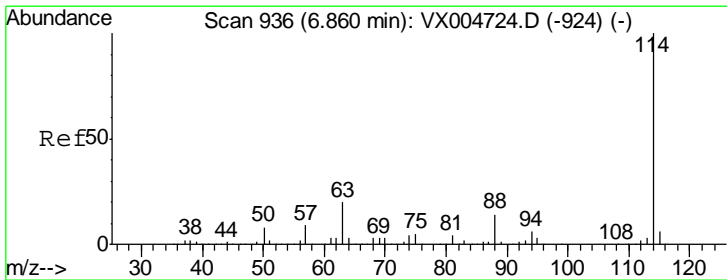
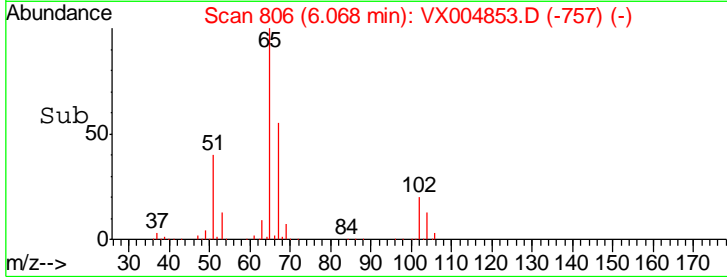
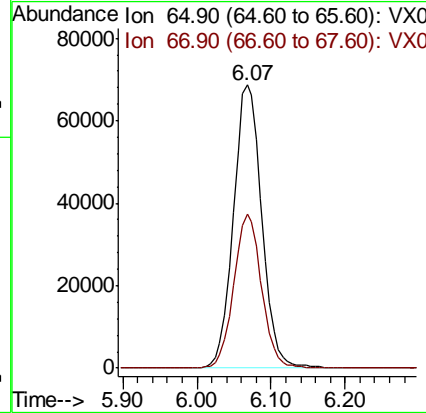
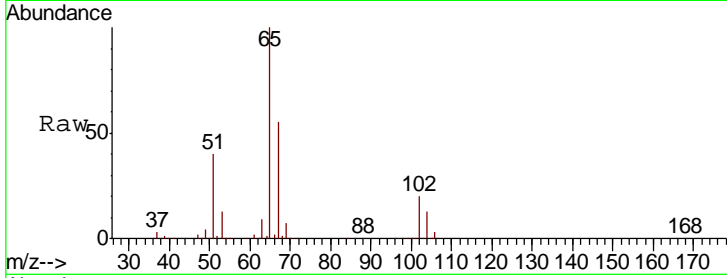




#33
 1,2-Dichloroethane-d4
 Concen: 55.461 ug/l
 RT: 6.07 min Scan# 806
 Delta R.T. -0.00 min
 Lab File: VX004853.D
 Acq: 29 Sep 2018 06:19

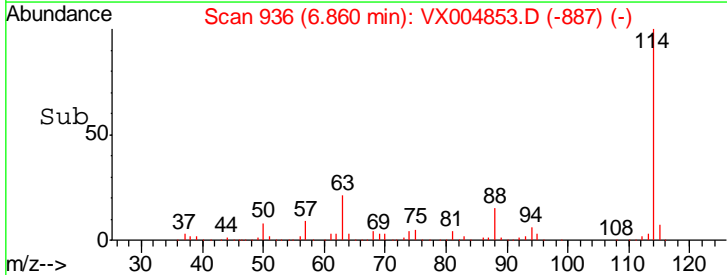
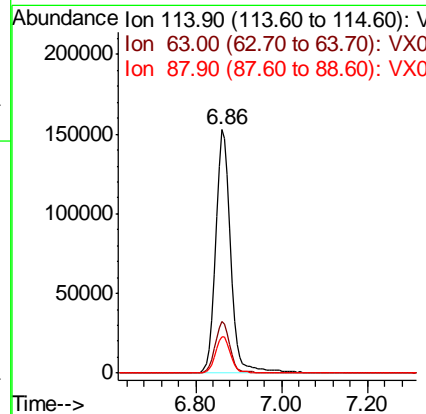
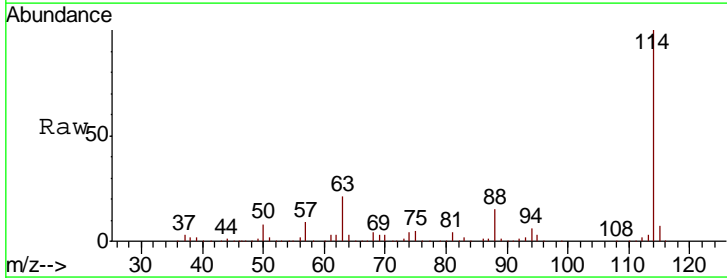
Instrument :
 MSVOA_X
 ClientSampleId :
 SA-DUP02-20180925

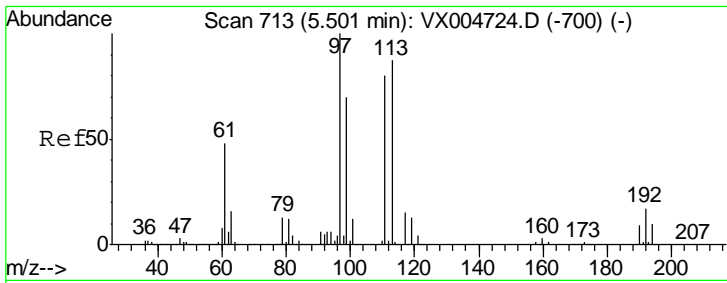
Tgt Ion	Resp	Lower	Upper
65	182823		
67	53.4	0.0	106.8



#34
 1,4-Difluorobenzene
 Concen: 50.000 ug/l
 RT: 6.86 min Scan# 936
 Delta R.T. -0.00 min
 Lab File: VX004853.D
 Acq: 29 Sep 2018 06:19

Tgt Ion	Resp	Lower	Upper
114	378901		
63	21.3	0.0	39.0
88	15.1	0.0	30.4

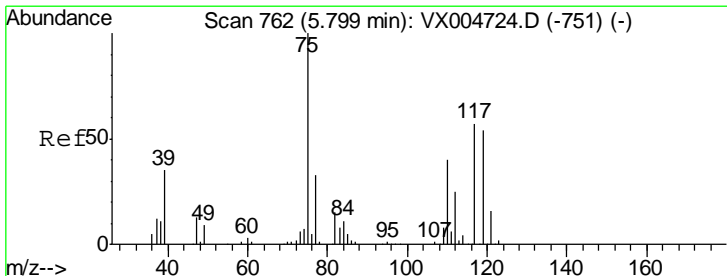
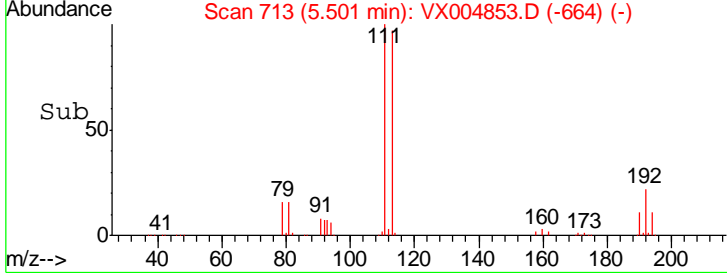
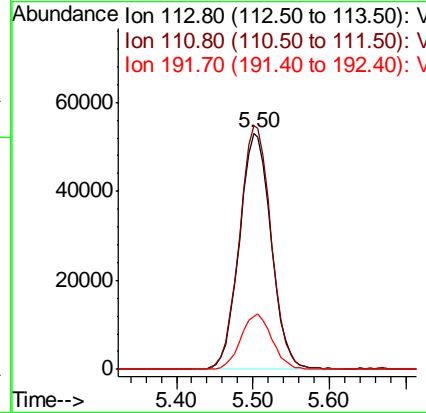
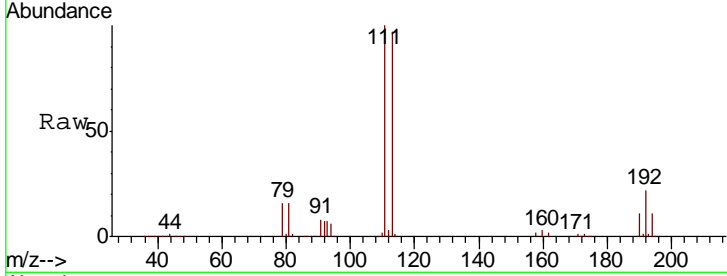




#35
 Dibromofluoromethane
 Concen: 47.484 ug/l
 RT: 5.50 min Scan# 713
 Delta R.T. -0.00 min
 Lab File: VX004853.D
 Acq: 29 Sep 2018 06:19

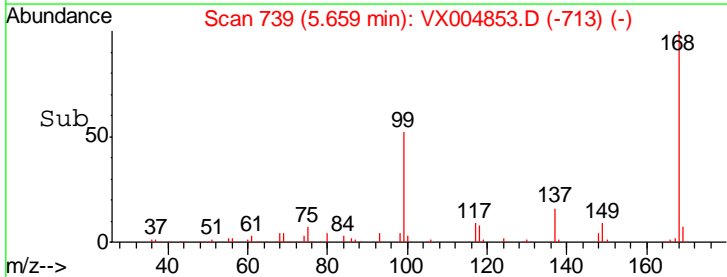
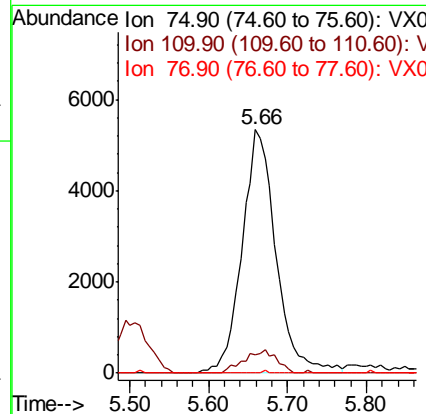
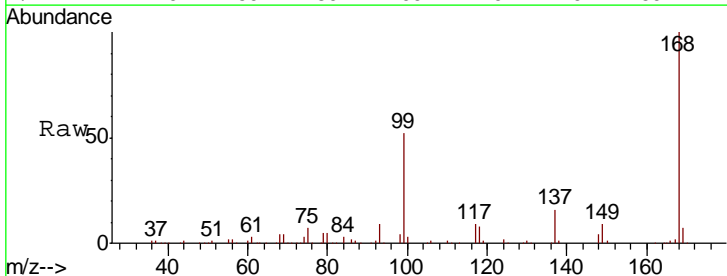
Instrument :
 MSVOA_X
ClientSampled :
 SA-DUP02-20180925

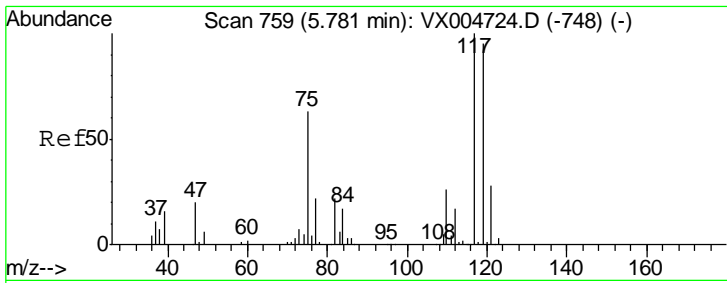
Tgt Ion	Resp	Lower	Upper
113	152482		
113	100		
111	103.2	82.4	123.6
192	23.1	19.4	29.2



#36
 1,1-Dichloropropene
 Concen: 3.643 ug/l
 RT: 5.66 min Scan# 739
 Delta R.T. -0.14 min
 Lab File: VX004853.D
 Acq: 29 Sep 2018 06:19

Tgt Ion	Resp	Lower	Upper
75	15960		
75	100		
110	9.1	18.0	54.0#
77	0.2	24.6	36.8#

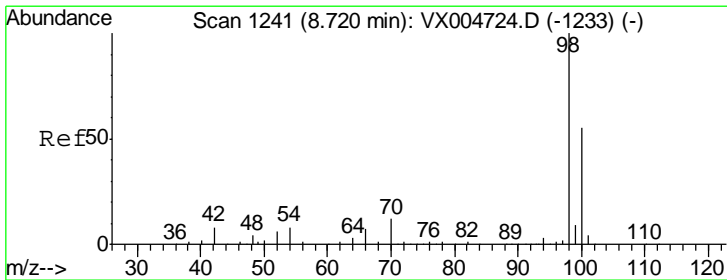
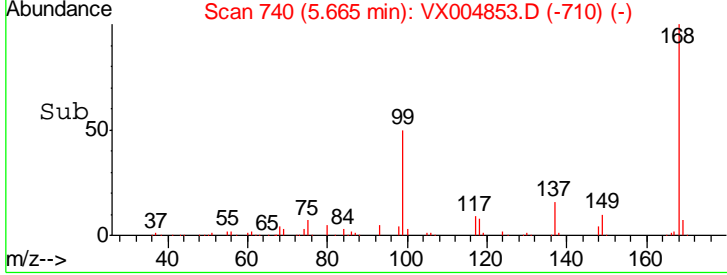
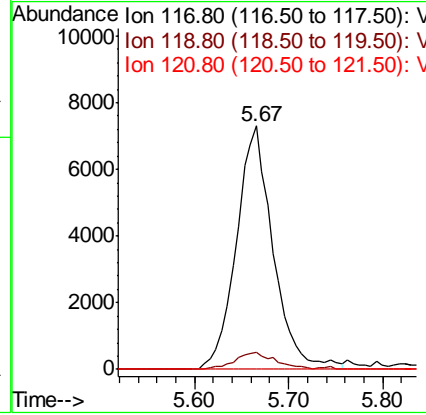
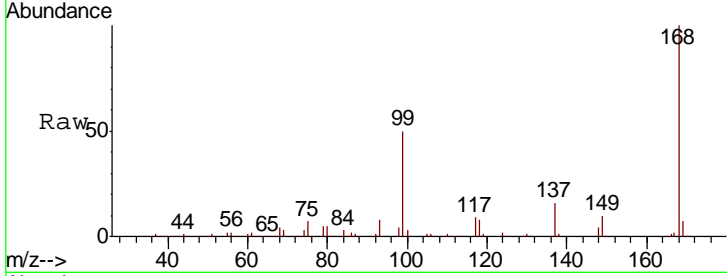




#38
 Carbon Tetrachloride
 Concen: 4.304 ug/l
 RT: 5.67 min Scan# 740
 Delta R.T. -0.12 min
 Lab File: VX004853.D
 Acq: 29 Sep 2018 06:19

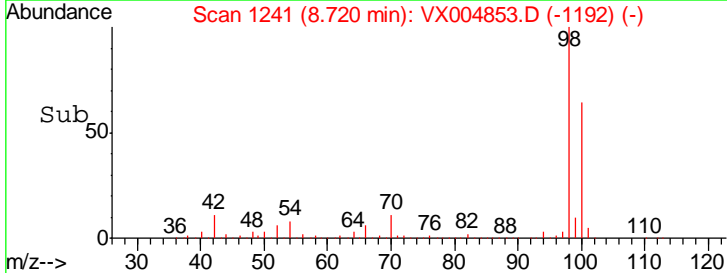
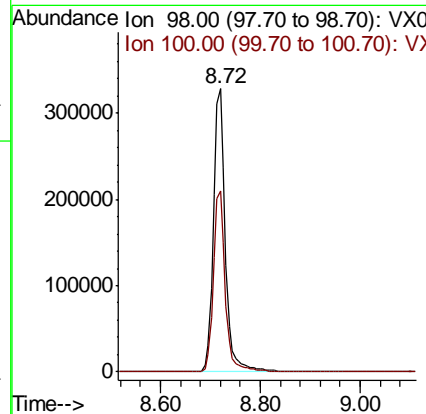
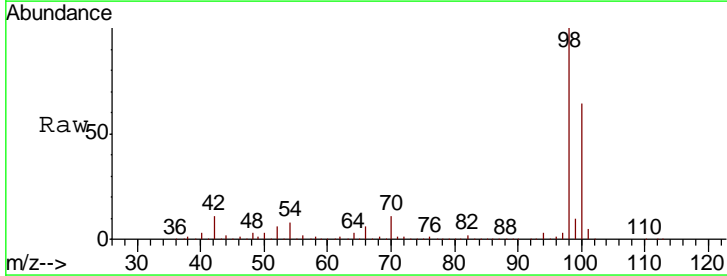
Instrument :
 MSVOA_X
 ClientSampled :
 SA-DUP02-20180925

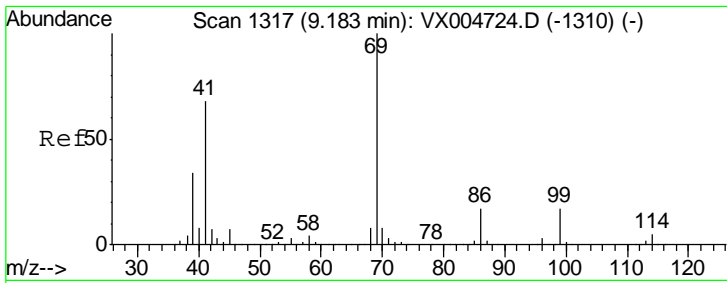
Tgt Ion	Resp	Lower	Upper
117	19824		
119	7.2	78.8	118.2#
121	0.0	24.9	37.3#



#50
 Toluene-d8
 Concen: 51.689 ug/l
 RT: 8.72 min Scan# 1241
 Delta R.T. -0.00 min
 Lab File: VX004853.D
 Acq: 29 Sep 2018 06:19

Tgt Ion	Resp	Lower	Upper
98	551820		
100	64.0	52.9	79.3

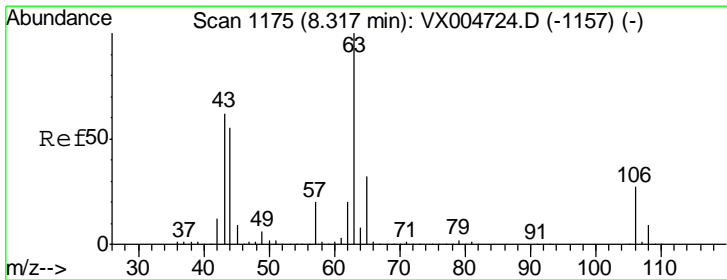
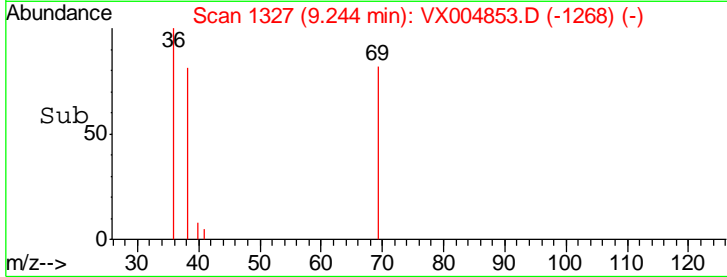
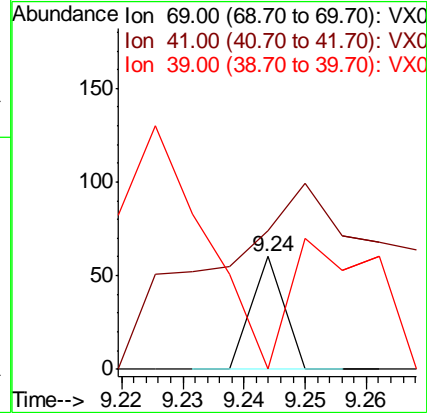
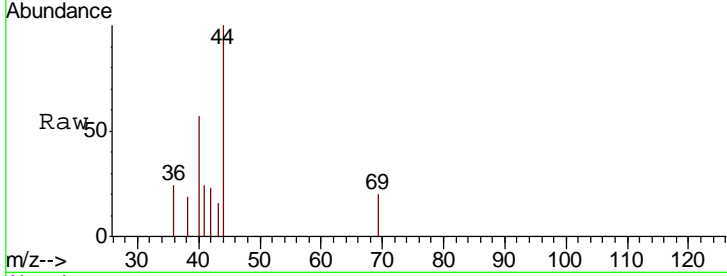




#56
 Ethyl methacrylate
 Concen: 2.866 ug/l
 RT: 9.24 min Scan# 1327
 Delta R.T. 0.06 min
 Lab File: VX004853.D
 Acq: 29 Sep 2018 06:19

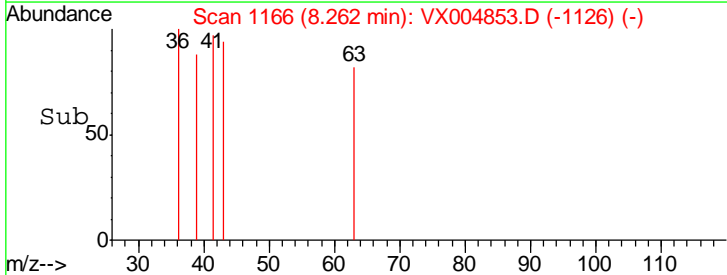
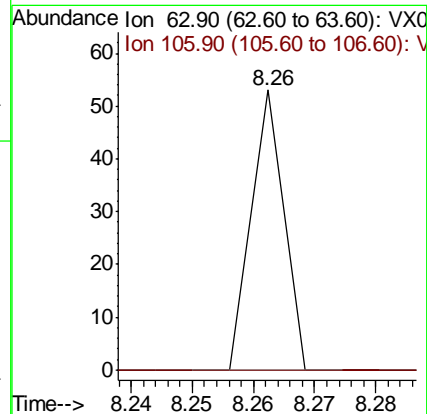
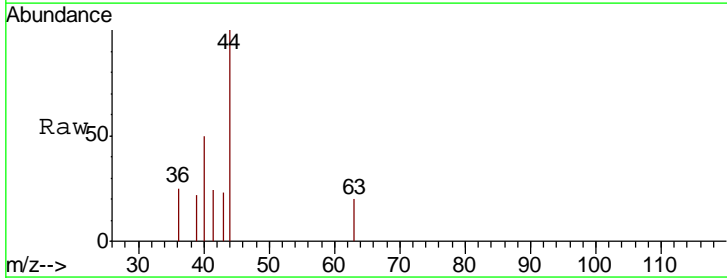
Instrument :
 MSVOA_X
 ClientSampled :
 SA-DUP02-20180925

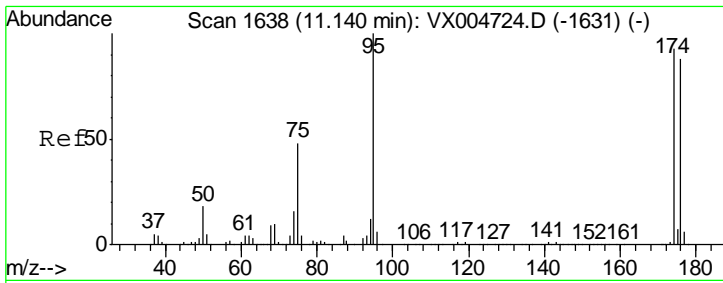
Tgt Ion	Resp	Lower	Upper
69	100		
41	890.9	51.0	76.4#
39	304.5	26.1	39.1#



#58
 2-Chloroethyl Vinyl ether
 Concen: 14.248 ug/l
 RT: 8.26 min Scan# 1166
 Delta R.T. -0.05 min
 Lab File: VX004853.D
 Acq: 29 Sep 2018 06:19

Tgt Ion	Resp	Lower	Upper
63	100		
106	0.0	23.9	35.9#

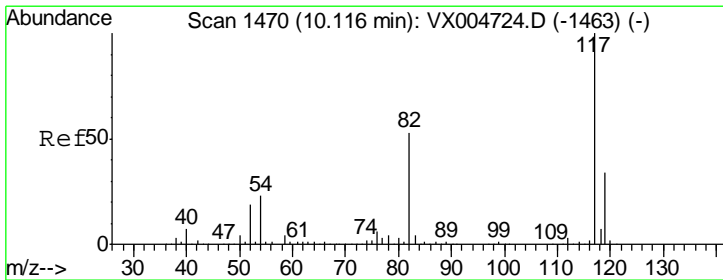
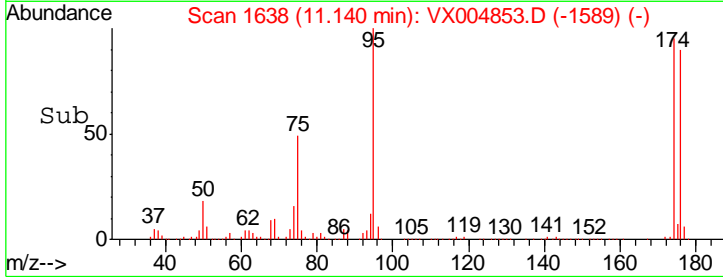
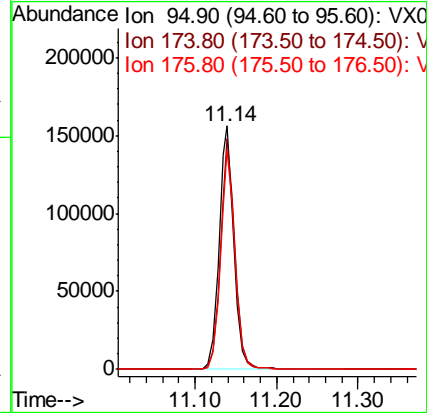
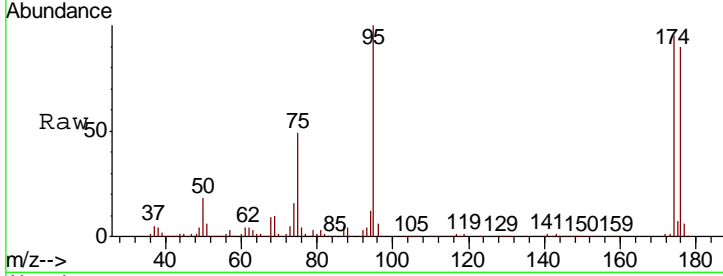




#62
 4-Bromofluorobenzene
 Concen: 52.002 ug/l
 RT: 11.14 min Scan# 1638
 Delta R.T. -0.00 min
 Lab File: VX004853.D
 Acq: 29 Sep 2018 06:19

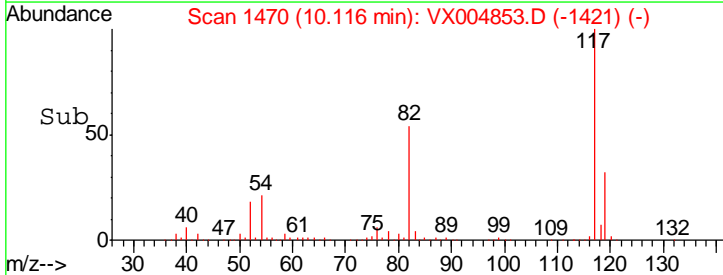
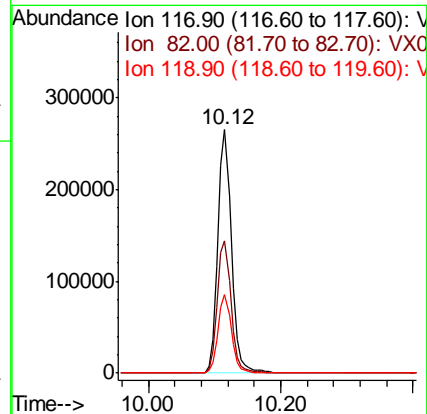
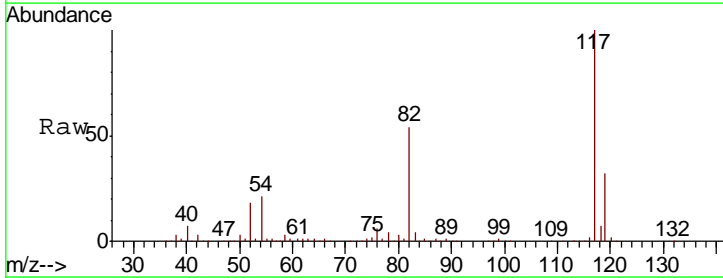
Instrument :
 MSVOA_X
 ClientSampled :
 SA-DUP02-20180925

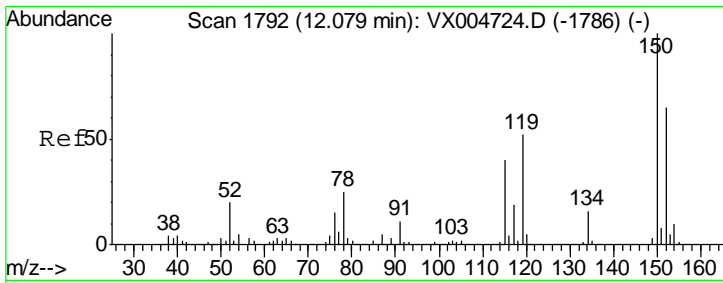
Tgt Ion	Resp	Lower	Upper
95	100		
174	92.9	0.0	185.2
176	88.1	0.0	178.6



#63
 Chlorobenzene-d5
 Concen: 50.000 ug/l
 RT: 10.12 min Scan# 1470
 Delta R.T. -0.00 min
 Lab File: VX004853.D
 Acq: 29 Sep 2018 06:19

Tgt Ion	Resp	Lower	Upper
117	100		
82	54.4	47.8	71.6
119	32.0	29.3	43.9

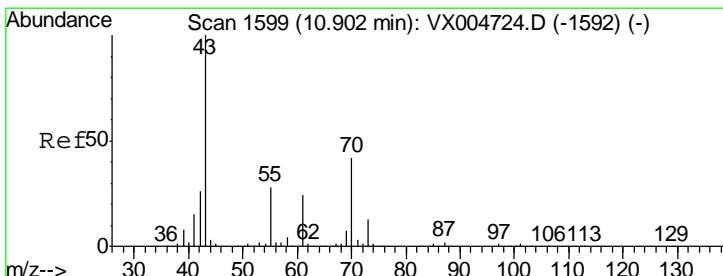
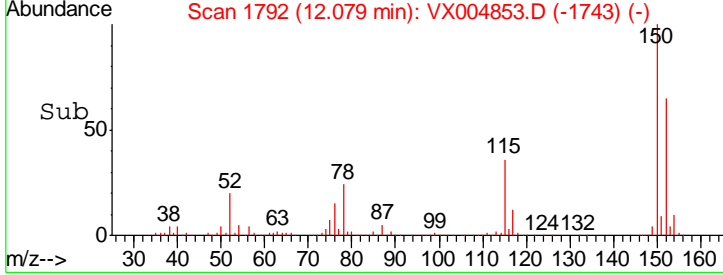
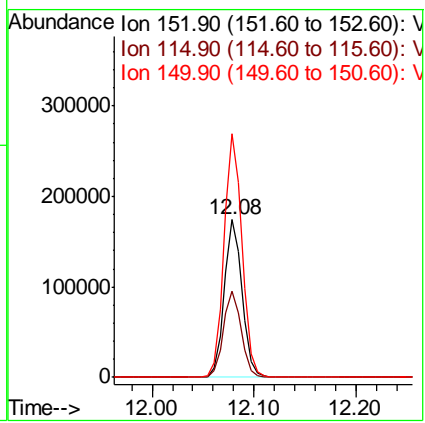
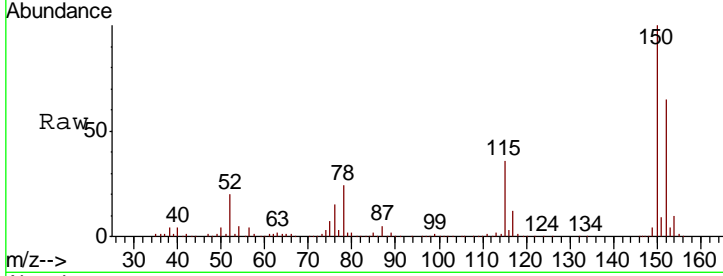




#72
 1,4-Dichlorobenzene-d4
 Concen: 50.000 ug/l
 RT: 12.08 min Scan# 1792
 Delta R.T. -0.00 min
 Lab File: VX004853.D
 Acq: 29 Sep 2018 06:19

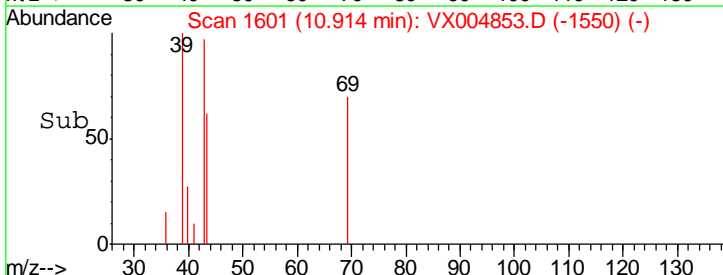
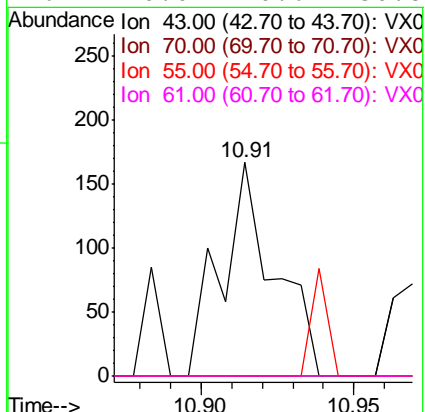
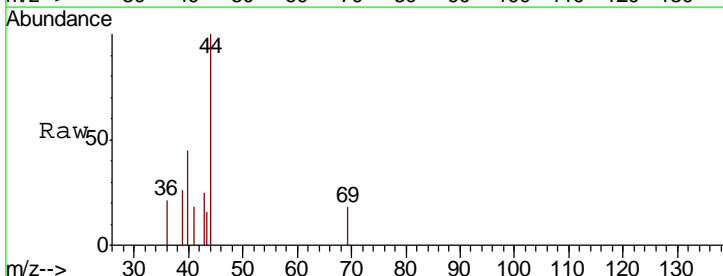
Instrument : MSVOA_X
 ClientSampled : SA-DUP02-20180925

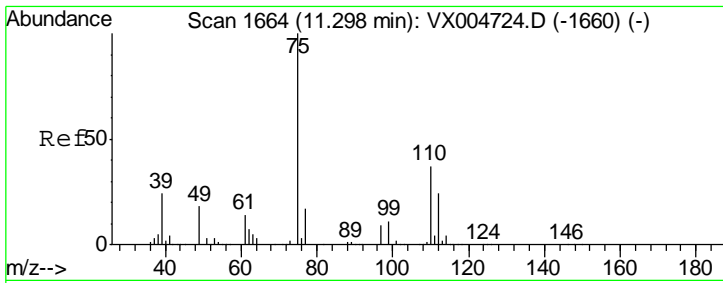
Tgt Ion	Resp	Lower	Upper
152	100		
115	55.6	39.0	117.0
150	156.2	0.0	351.0



#74
 N-amyl acetate
 Concen: 1.774 ug/l
 RT: 10.91 min Scan# 1601
 Delta R.T. 0.01 min
 Lab File: VX004853.D
 Acq: 29 Sep 2018 06:19

Tgt Ion	Resp	Lower	Upper
43	100		
70	0.0	37.4	56.0#
55	0.0	21.8	32.8#
61	0.0	20.6	30.8#

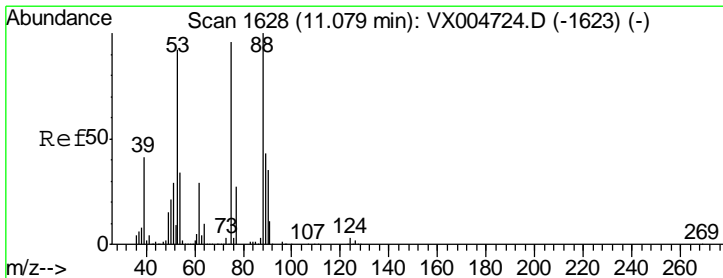
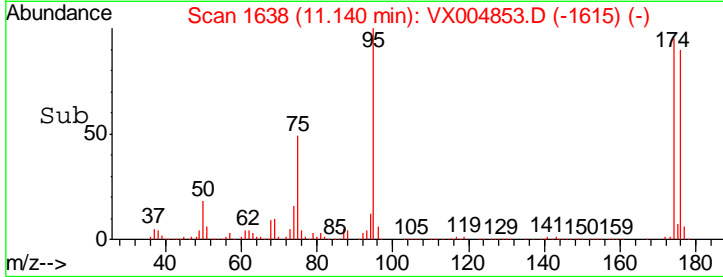
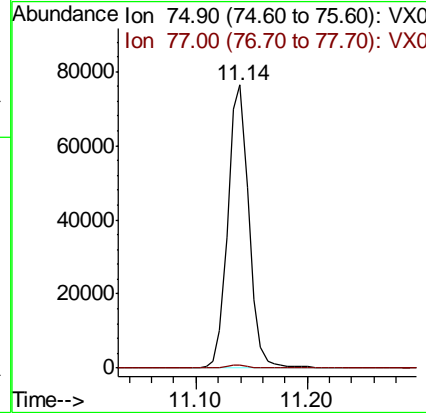
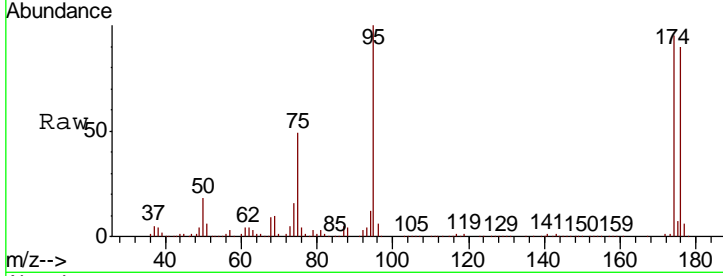




#76
 1,2,3-Trichloropropane
 Concen: 21.145 ug/l
 RT: 11.14 min Scan# 1638
 Delta R.T. -0.16 min
 Lab File: VX004853.D
 Acq: 29 Sep 2018 06:19

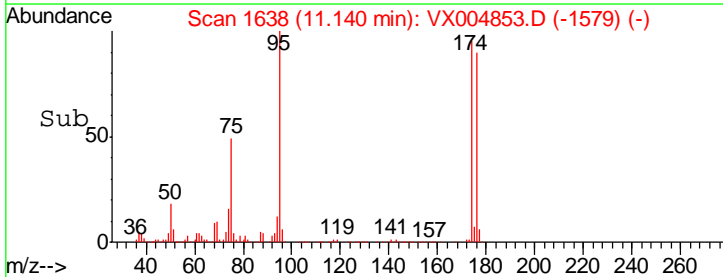
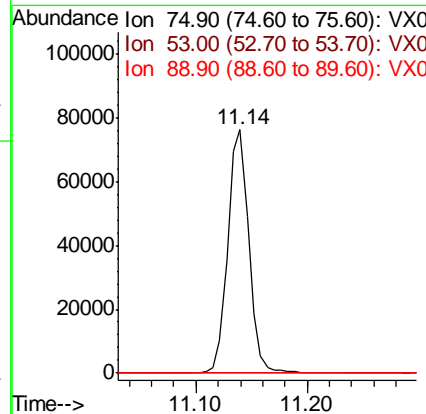
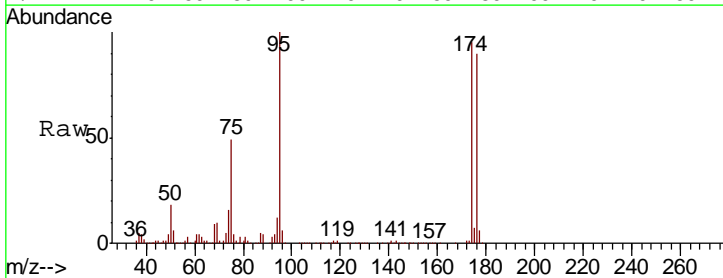
Instrument : MSVOA_X
 ClientSampled : SA-DUP02-20180925

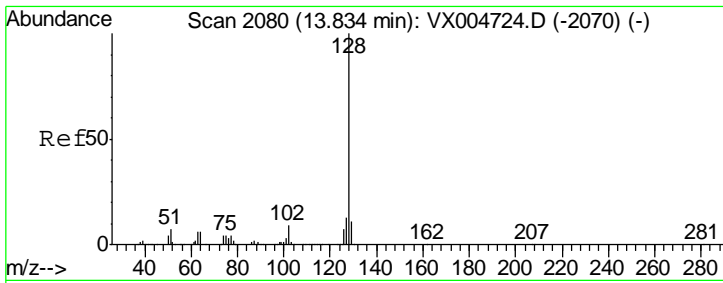
Tgt Ion	Resp	Lower	Upper
75	100		
77	1.2	20.2	60.6#



#81
 trans-1,4-Dichloro-2-butene
 Concen: 57.365 ug/l
 RT: 11.14 min Scan# 1638
 Delta R.T. 0.06 min
 Lab File: VX004853.D
 Acq: 29 Sep 2018 06:19

Tgt Ion	Resp	Lower	Upper
75	100		
53	0.3	80.1	120.1#
89	0.0	37.2	55.8#





#95
 Naphthalene
 Concen: 0.734 ug/l
 RT: 13.83 min Scan# 2080
 Delta R.T. 0.00 min
 Lab File: VX004853.D
 Acq: 29 Sep 2018 06:19

Instrument :
 MSVOA_X
ClientSampled :
 SA-DUP02-20180925

Tot Ion	Ratio	Lower	Upper
128	100		
127	0.0	10.2	15.2#
129	0.0	8.6	12.8#

