

Data Path : Z:\VOASRV\HPCHEM1\MSVOA X\DATA\VX092818\
 Data File : VX004847.D
 Acq On : 29 Sep 2018 03:39
 Operator : JC/MD
 Sample : J5134-11
 Misc : 5.0mL/MSVOA X/WATER
 ALS Vial : 39 Sample Multiplier: 1

Instrument :
 MSVOA_X
 ClientSampleId :
 SA-TW505-4953

Integration Parameters: RTEINT.P
 Integrator: RTE
 Smoothing : ON Filtering: 5
 Sampling : 1 Min Area: 3 % of largest Peak
 Start Thrs: 0.2 Max Peaks: 100
 Stop Thrs : 0 Peak Location: TOP

If leading or trailing edge < 100 prefer < Baseline drop else tangent >
 Peak separation: 5

Method : Z:\VOASRV\HPCHEM1\MSVOA_X\METHOD\82X092618W.M
 Title : SW846 8260

Signal : TIC

peak #	R.T. min	first scan	max scan	last scan	PK TY	peak height	corr. area	corr. % max.	% of total
1	1.392	35	39	48	rVB2	30483	48680	3.36%	0.635%
2	1.617	66	76	82	rBV5	11016	26669	1.84%	0.348%
3	2.611	234	239	249	rVB	68526	118937	8.22%	1.552%
4	3.019	299	306	317	rVB2	12776	33157	2.29%	0.433%
5	4.763	575	592	601	rBV2	5051	18532	1.28%	0.242%
6	5.501	701	713	726	rBV2	185663	536265	37.07%	7.000%
7	5.671	728	741	757	rBV3	228828	663851	45.89%	8.665%
8	6.067	793	806	819	rBV2	191322	521223	36.03%	6.803%
9	6.866	923	937	965	rBV	357447	913830	63.17%	11.928%
10	8.719	1233	1241	1262	rBV	833576	1446657	100.00%	18.883%
11	10.116	1463	1470	1489	rBV	776489	1096004	75.76%	14.306%
12	11.140	1632	1638	1655	rBV	779199	1010034	69.82%	13.184%
13	12.079	1786	1792	1800	rBV	1011456	1227368	84.84%	16.021%

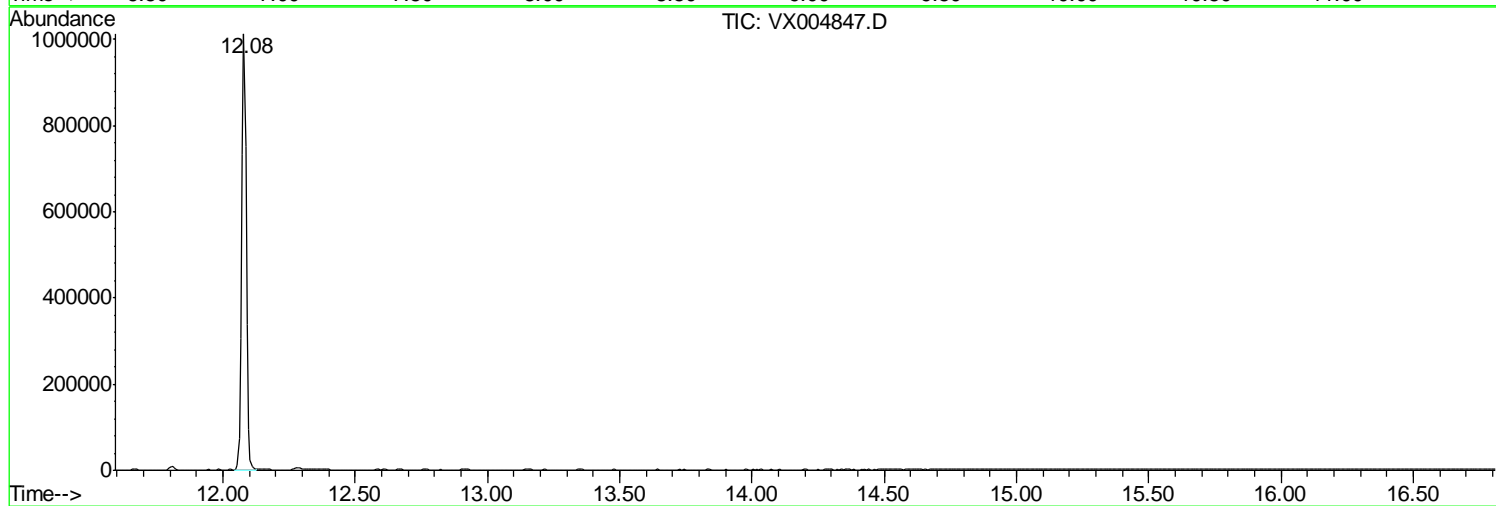
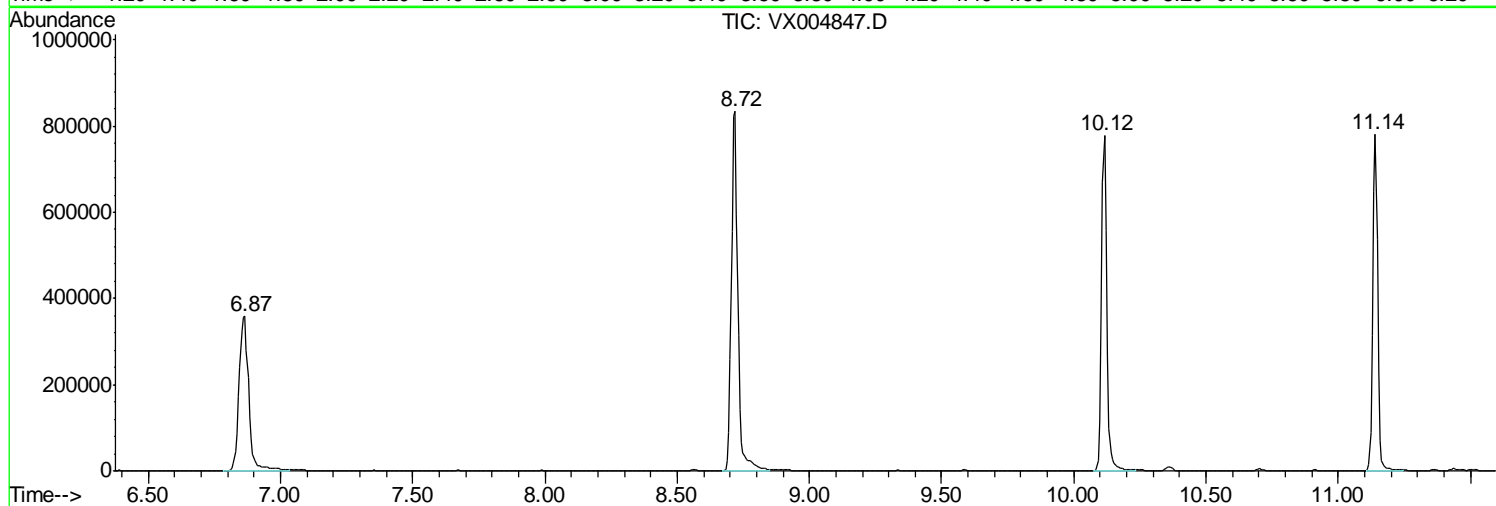
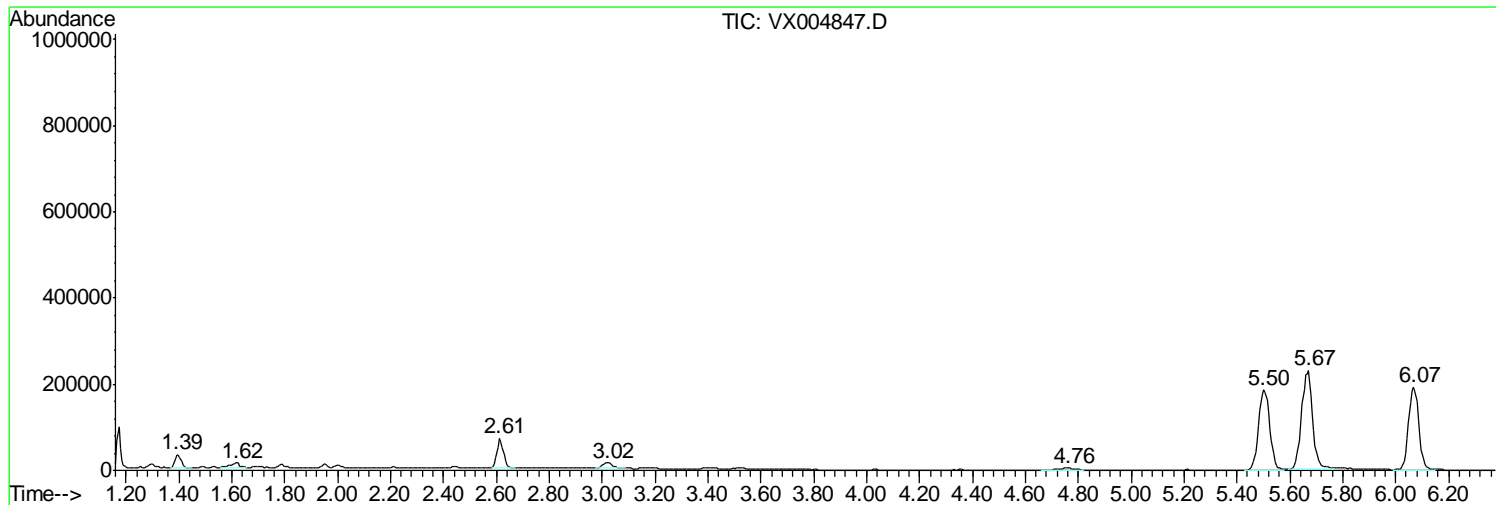
Sum of corrected areas: 7661207

Data Path : Z:\VOASRV\HPCHEM1\MSVOA X\DATA\VX092818\
Data File : VX004847.D
Acq On : 29 Sep 2018 03:39
Operator : JC/MD
Sample : J5134-11
Misc : 5.0mL/MSVOA X/WATER
ALS Vial : 39 Sample Multiplier: 1

Instrument :
MSVOA_X
ClientSampled :
SA-TW505-4953

Quant Method : Z:\VOASRV\HPCHEM1\MSVOA_X\METHOD\82X092618W.M
Quant Title : SW846 8260

TIC Library : C:\DATABASE\NIST11.L
TIC Integration Parameters: LSCINT.P



Data Path : Z:\VOASRV\HPCHEM1\MSVOA X\DATA\VX092818\
 Data File : VX004847.D
 Acq On : 29 Sep 2018 03:39
 Operator : JC/MD
 Sample : J5134-11
 Misc : 5.0mL/MSVOA X/WATER
 ALS Vial : 39 Sample Multiplier: 1

Instrument :
 MSVOA_X
 ClientSampled :
 SA-TW505-4953

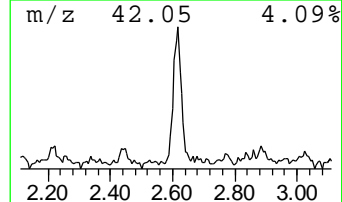
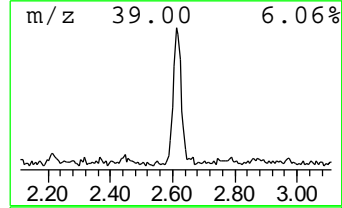
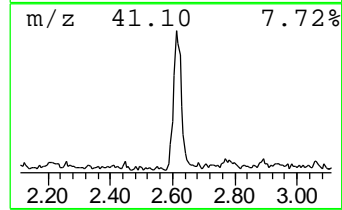
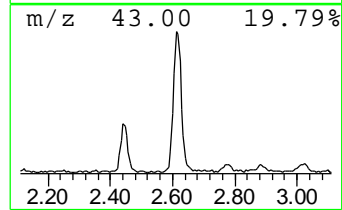
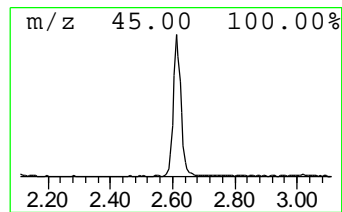
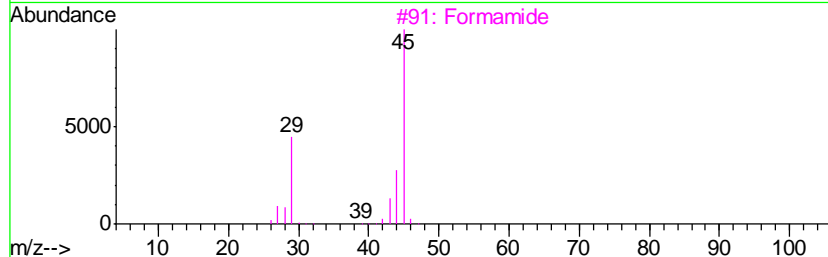
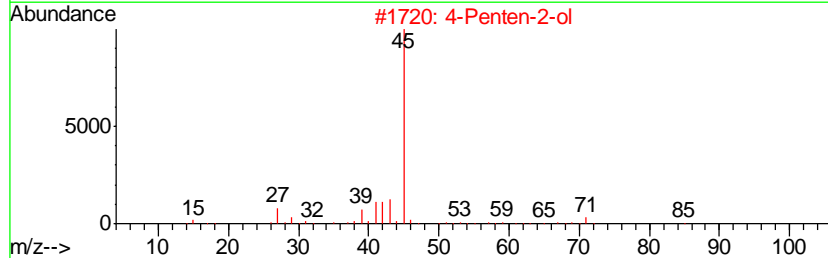
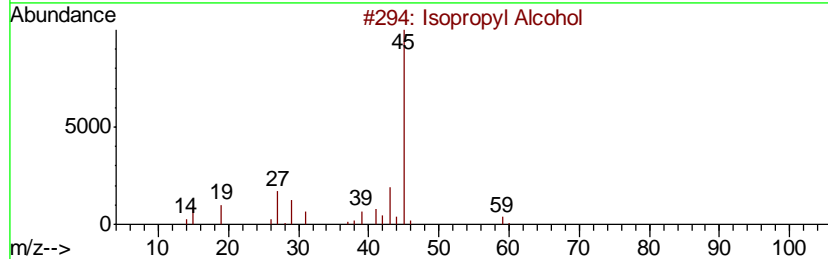
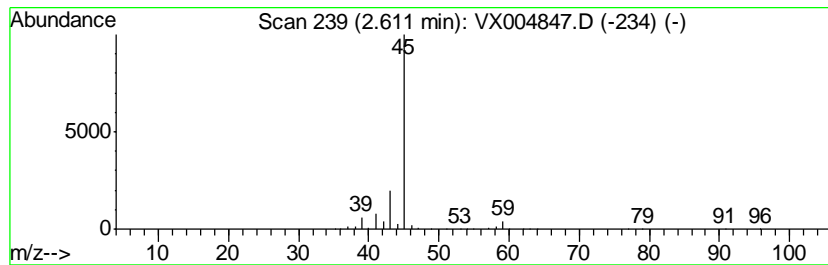
Quant Method : Z:\VOASRV\HPCHEM1\MSVOA_X\METHOD\82X092618W.M
 Quant Title : SW846 8260

TIC Library : C:\DATABASE\NIST11.L
 TIC Integration Parameters: LSCINT.P

 Peak Number 1 unknown2.61 Concentration Rank 1

R.T.	EstConc	Area	Relative to ISTD	R.T.
2.61	8.96 ug/l	118937	Pentafluorobenzene	5.67

Hit#	of	Tentative ID	MW	MolForm	CAS#	Qual
1	5	Isopropyl Alcohol	60	C3H8O	000067-63-0	40
2		4-Penten-2-ol	86	C5H10O	000625-31-0	4
3		Formamide	45	CH3NO	000075-12-7	4
4		Ethanol, 2-nitro-	91	C2H5NO3	000625-48-9	4
5		Propanoic acid, 2-hydroxy-, meth...	104	C4H8O3	002155-30-8	4



Data Path : Z:\VOASRV\HPCHEM1\MSVOA_X\DATA\VX092818\
Data File : VX004847.D
Acq On : 29 Sep 2018 03:39
Operator : JC/MD
Sample : J5134-11
Misc : 5.0mL/MSVOA_X/WATER
ALS Vial : 39 Sample Multiplier: 1

Instrument :
MSVOA_X
ClientSampleId :
SA-TW505-4953

Quant Method : Z:\VOASRV\HPCHEM1\MSVOA_X\METHOD\82X092618W.M
Quant Title : SW846 8260

TIC Library : C:\DATABASE\NIST11.L
TIC Integration Parameters: LSCINT.P

TIC Top Hit name	RT	EstConc	Units	Response	--Internal Standard--			
					#	RT	Resp	Conc
unknown2.61	2.61	9.0	ug/l	118937	1	5.67	663851	50.0