

Data Path : Z:\voasrv\HPCHEM1\MSVOA\_X\Data\VX092822\  
 Data File : VX031727.D  
 Acq On : 28 Sep 2022 15:17  
 Operator : JC/MD  
 Sample : N4846-04  
 Misc : 5.0mL/MSVOA\_X/WATER  
 ALS Vial : 13 Sample Multiplier: 1

Instrument :  
 MSVOA\_X  
 ClientSampleId :  
 TB01-20220923

Integration Parameters: RTEINT.P

Integrator: RTE  
 Smoothing : ON Filtering: 5  
 Sampling : 1 Min Area: 3 % of largest Peak  
 Start Thrs: 0.2 Max Peaks: 100  
 Stop Thrs : 0 Peak Location: TOP

If leading or trailing edge < 100 prefer < Baseline drop else tangent >  
 Peak separation: 5

Method : Z:\voasrv\HPCHEM1\MSVOA\_X\Method\82X092622W.M  
 Title : SW846 8260

Signal : TIC: VX031727.D\data.ms

peak #	R.T. min	first scan	max scan	last scan	PK TY	peak height	corr. area	corr. % max.	% of total
1	5.385	693	705	721	rBV	121892	348572	34.17%	7.921%
2	5.550	721	732	752	rVB	122230	347859	34.10%	7.904%
3	5.958	788	799	814	rBV	128365	343957	33.72%	7.816%
4	6.763	920	931	945	rBV	177809	429450	42.10%	9.758%
5	8.647	1233	1240	1249	rBV	654105	1019993	100.00%	23.177%
6	10.055	1465	1471	1482	rBV	437408	583689	57.22%	13.263%
7	11.079	1634	1639	1649	rBV	523259	674021	66.08%	15.316%
8	12.024	1788	1794	1805	rBV	527628	653334	64.05%	14.846%

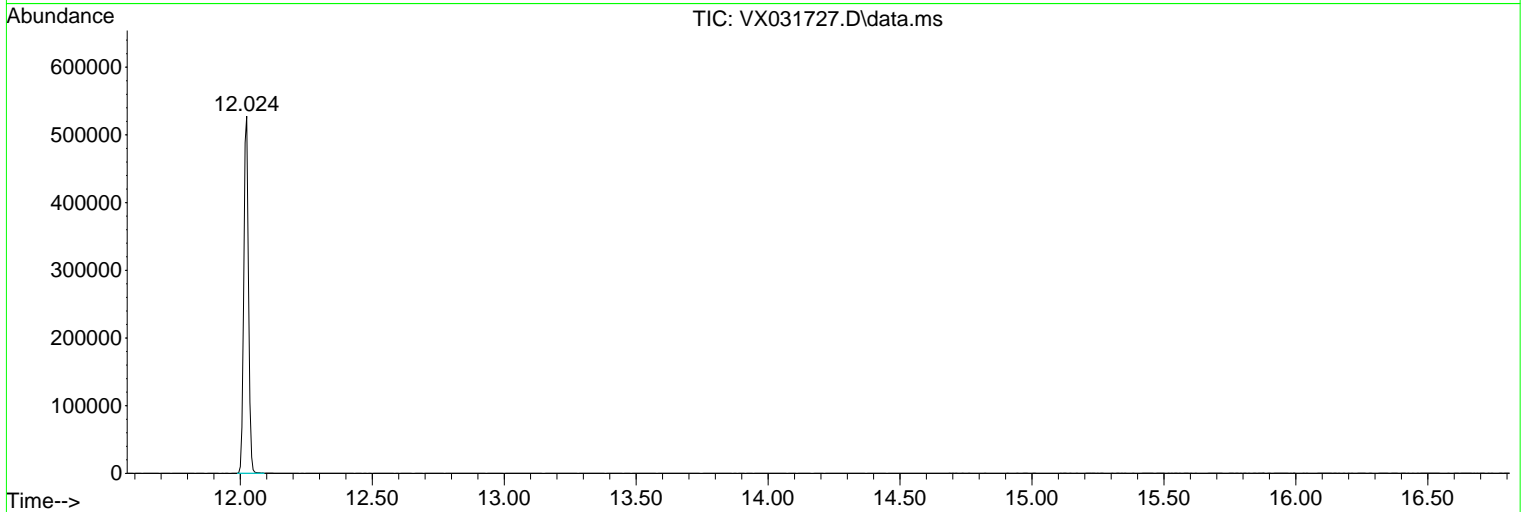
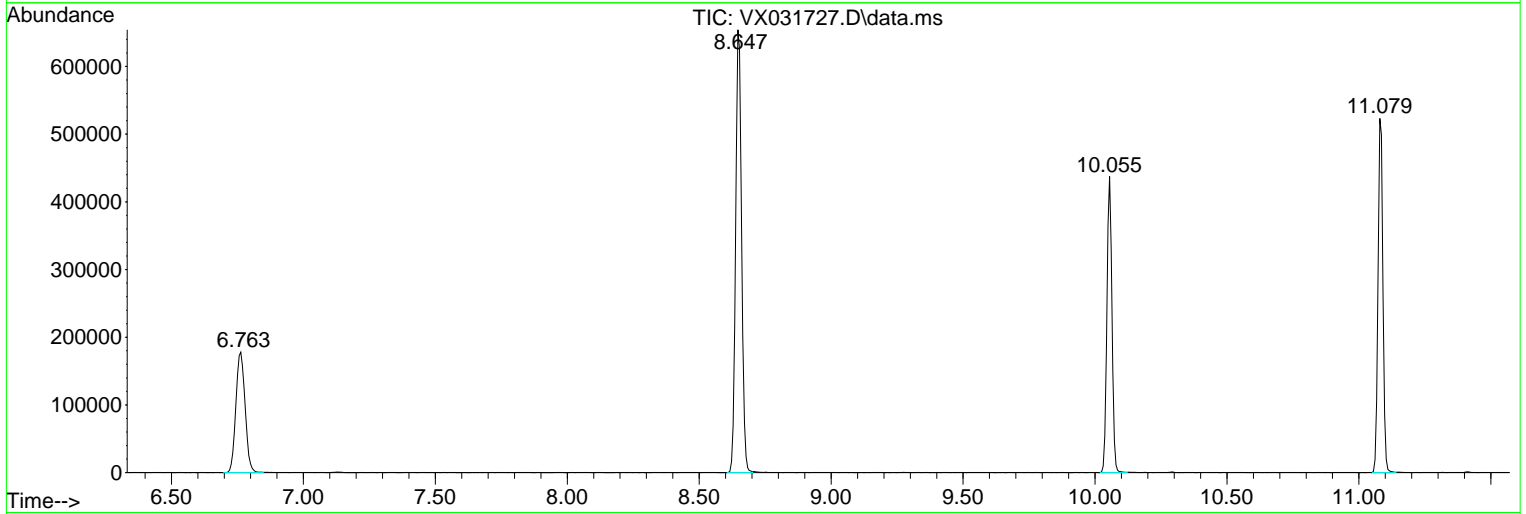
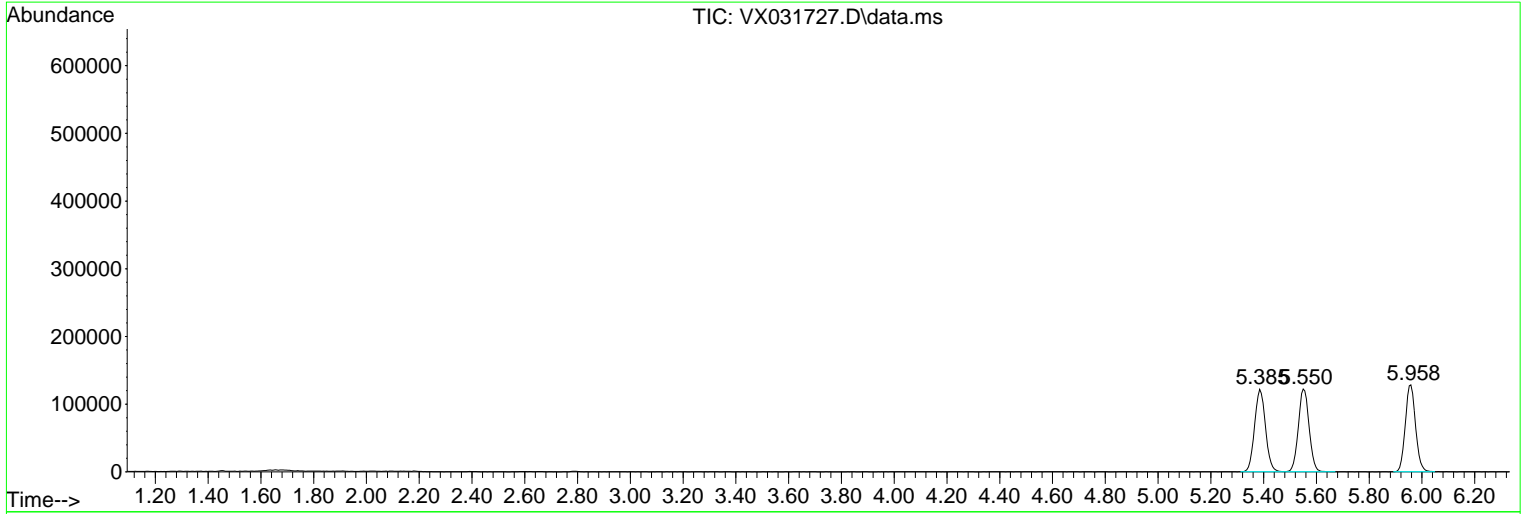
Sum of corrected areas: 4400875

Data Path : Z:\voasrv\HPCHEM1\MSVOA\_X\Data\VX092822\  
 Data File : VX031727.D  
 Acq On : 28 Sep 2022 15:17  
 Operator : JC/MD  
 Sample : N4846-04  
 Misc : 5.0mL/MSVOA\_X/WATER  
 ALS Vial : 13 Sample Multiplier: 1

Instrument :  
 MSVOA\_X  
 ClientSampleId :  
 TB01-20220923

Quant Method : Z:\voasrv\HPCHEM1\MSVOA\_X\Method\82X092622W.M  
 Quant Title : SW846 8260

TIC Library : C:\Database\NIST20.L  
 TIC Integration Parameters: LSCINT.P



Library Search Compound Report

Data Path : Z:\voasrv\HPCHEM1\MSVOA\_X\Data\VX092822\  
Data File : VX031727.D  
Acq On : 28 Sep 2022 15:17  
Operator : JC/MD  
Sample : N4846-04  
Misc : 5.0mL/MSVOA\_X/WATER  
ALS Vial : 13 Sample Multiplier: 1

Instrument :  
MSVOA\_X  
ClientSampleId :  
TB01-20220923

Quant Method : Z:\voasrv\HPCHEM1\MSVOA\_X\Method\82X092622W.M  
Quant Title : SW846 8260

TIC Library : C:\Database\NIST20.L  
TIC Integration Parameters: LSCINT.P

No Library Search Compounds Detected

\*\*\*\*\*

Data Path : Z:\voasrv\HPCHEM1\MSVOA\_X\Data\VX092822\  
Data File : VX031727.D  
Acq On : 28 Sep 2022 15:17  
Operator : JC/MD  
Sample : N4846-04  
Misc : 5.0mL/MSVOA\_X/WATER  
ALS Vial : 13 Sample Multiplier: 1

Instrument :  
MSVOA\_X  
ClientSampleId :  
TB01-20220923

Quant Method : Z:\voasrv\HPCHEM1\MSVOA\_X\Method\82X092622W.M  
Quant Title : SW846 8260

TIC Library : C:\Database\NIST20.L  
TIC Integration Parameters: LSCINT.P

TIC Top Hit name	RT	EstConc	Units	Response	--Internal Standard--			
					#	RT	Resp	Conc

---