

Data Path : Z:\VOASRV\HPCHEM1\MSVOA X\DATA\VX092920\
 Data File : VX018665.D
 Acq On : 29 Sep 2020 18:16
 Operator : JC/SP
 Sample : L4143-10
 Misc : 25.0mL/MSVOA X/WATER
 ALS Vial : 24 Sample Multiplier: 1

Instrument :
 MSVOA_X
 ClientSampled :
 BG0H4

Integration Parameters: rteint.p
 Integrator: RTE
 Smoothing : ON
 Sampling : 1
 Start Thrs: 0.1
 Stop Thrs : 0

Filtering: 5
 Min Area: 3 % of largest Peak
 Max Peaks: 100
 Peak Location: TOP

If leading or trailing edge < 100 prefer < Baseline drop else tangent >
 Peak separation: 5

Method : Z:\VOASRV\HPCHEM1\MSVOA_X\METHOD\SOMXTR092820WMA.M
 Title : TRACE VOA SOM01.0

Signal : TIC

peak #	R.T. min	first scan	max scan	last scan	PK TY	peak height	corr. area	corr. % max.	% of total
1	1.386	46	49	56	rBV	87394	88448	12.38%	1.333%
2	1.697	95	100	110	rVB	76310	93644	13.10%	1.411%
3	1.922	132	137	140	rBV	25390	38081	5.33%	0.574%
4	2.227	185	187	194	rVB8	10026	15054	2.11%	0.227%
5	2.349	200	207	216	rBV2	224533	427646	59.85%	6.444%
6	4.556	558	569	586	rBV2	59370	260407	36.44%	3.924%
7	5.141	651	665	678	rBV2	106175	343849	48.12%	5.182%
8	5.635	738	746	753	rBV2	4480	12067	1.69%	0.182%
9	6.044	803	813	827	rVB2	245106	714580	100.00%	10.768%
10	6.830	932	942	953	rBV	242180	590375	82.62%	8.896%
11	7.159	992	996	1005	rBV	3121	9757	1.37%	0.147%
12	7.373	1021	1031	1041	rBV	153620	338899	47.43%	5.107%
13	7.873	1107	1113	1119	rVB9	4349	10725	1.50%	0.162%
14	8.373	1187	1195	1204	rBV	90539	151516	21.20%	2.283%
15	8.696	1242	1248	1257	rBV	380282	598717	83.79%	9.022%
16	8.763	1257	1259	1263	rVB5	5917	7764	1.09%	0.117%
17	8.994	1289	1297	1303	rBV	64686	94650	13.25%	1.426%
18	9.317	1343	1350	1356	rBV2	14245	24195	3.39%	0.365%
19	9.427	1361	1368	1380	rBV	463134	690065	96.57%	10.399%
20	10.098	1472	1478	1485	rBV	493393	689865	96.54%	10.396%
21	11.232	1658	1664	1673	rBV2	156355	207786	29.08%	3.131%
22	11.354	1677	1684	1690	rVB	17575	30472	4.26%	0.459%
23	12.061	1795	1800	1806	rVV	498560	620090	86.78%	9.344%
24	12.256	1828	1832	1836	rBV2	27114	35129	4.92%	0.529%
25	12.360	1844	1849	1856	rBV	414745	523183	73.22%	7.884%
26	12.811	1916	1923	1926	rVB6	5141	9688	1.36%	0.146%
27	12.896	1932	1937	1940	rVB6	5316	9395	1.31%	0.142%

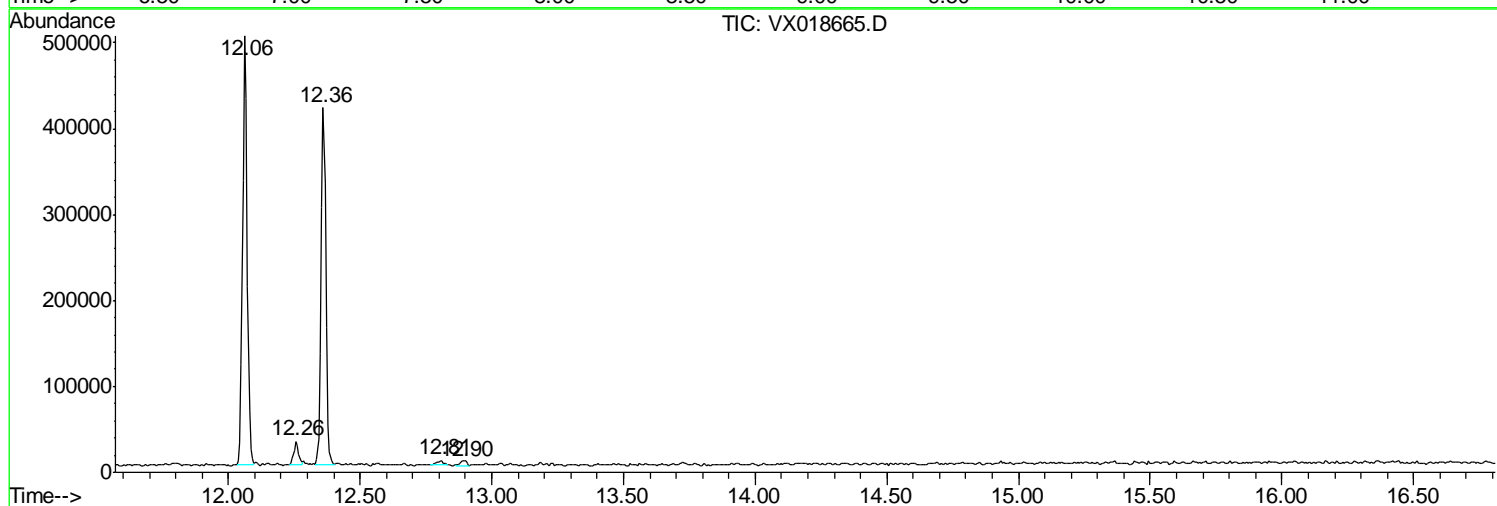
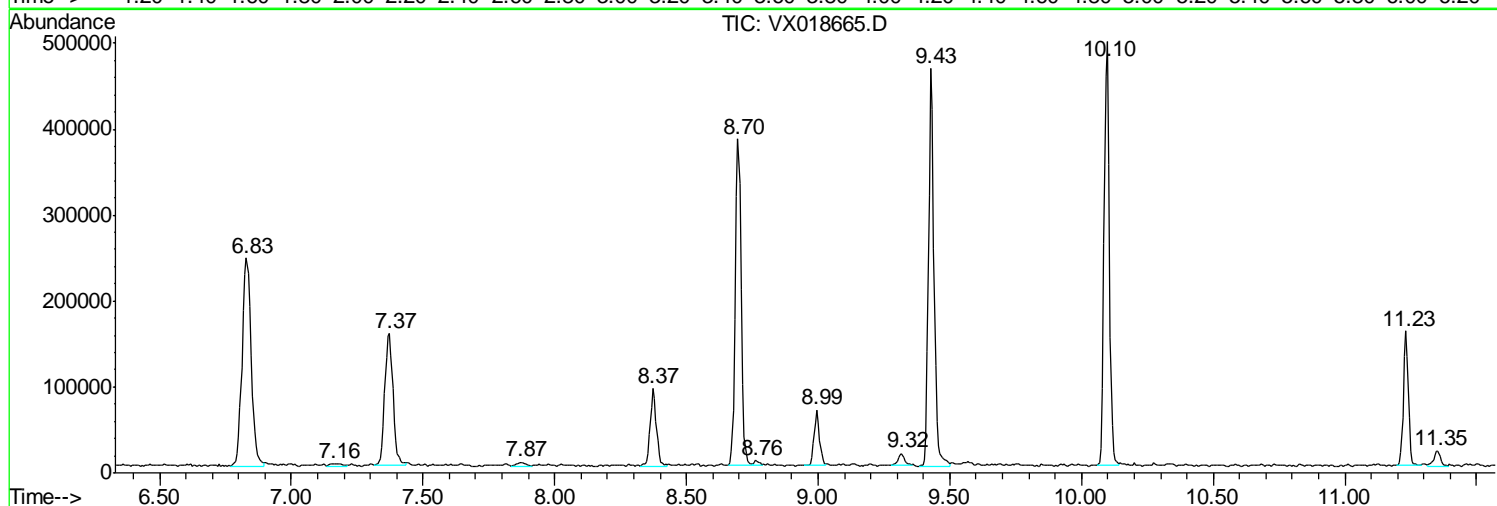
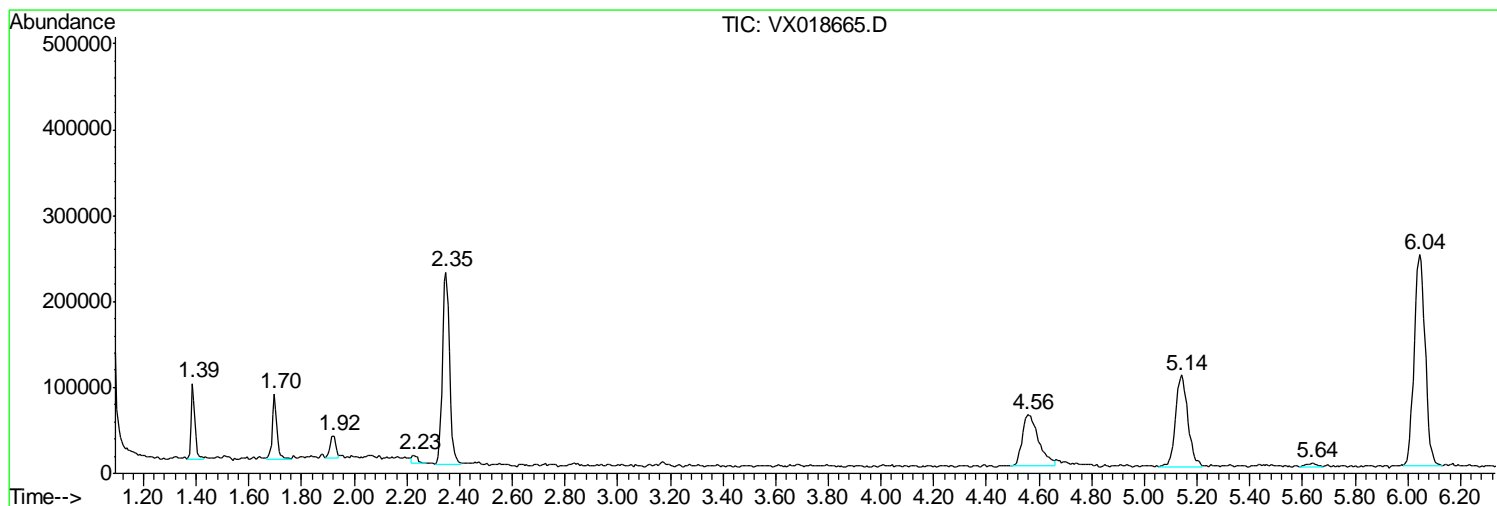
Sum of corrected areas: 6636047

Data Path : Z:\VOASRV\HPCHEM1\MSVOA X\DATA\VX092920\
 Data File : VX018665.D
 Acq On : 29 Sep 2020 18:16
 Operator : JC/SP
 Sample : L4143-10
 Misc : 25.0mL/MSVOA X/WATER
 ALS Vial : 24 Sample Multiplier: 1

Instrument :
 MSVOA_X
 ClientSampleId :
 BG0H4

Quant Method : Z:\VOASRV\HPCHEM1\MSVOA_X\METHOD\SOMXTR092820WMA.M
 Quant Title : TRACE VOA SOM01.0

TIC Library : C:\DATABASE\NIST11.L
 TIC Integration Parameters: LSCINT.P



Data Path : Z:\VOASRV\HPCHEM1\MSVOA_X\DATA\VX092920\
Data File : VX018665.D
Acq On : 29 Sep 2020 18:16
Operator : JC/SP
Sample : L4143-10
Misc : 25.0mL/MSVOA_X/WATER
ALS Vial : 24 Sample Multiplier: 1

Instrument :
MSVOA_X
ClientSampleId :
BG0H4

Quant Method : Z:\VOASRV\HPCHEM1\MSVOA_X\METHOD\SOMXTR092820WMA.M
Quant Title : TRACE VOA SOM01.0

TIC Library : C:\DATABASE\NIST11.L
TIC Integration Parameters: LSCINT.P

No Library Search Compounds Detected

Data Path : Z:\VOASRV\HPCHEM1\MSVOA_X\DATA\VX092920\
Data File : VX018665.D
Acq On : 29 Sep 2020 18:16
Operator : JC/SP
Sample : L4143-10
Misc : 25.0mL/MSVOA_X/WATER
ALS Vial : 24 Sample Multiplier: 1

Instrument :
MSVOA_X
ClientSampleId :
BG0H4

Quant Method : Z:\VOASRV\HPCHEM1\MSVOA_X\METHOD\SOMXTR092820WMA.M
Quant Title : TRACE VOA SOM01.0

TIC Library : C:\DATABASE\NIST11.L
TIC Integration Parameters: LSCINT.P

TIC Top Hit name	RT	EstConc	Units	Response	--Internal Standard--			
					#	RT	Resp	Conc
