

Data Path : Z:\voasrv\HPCHEM1\MSVOA_X\Data\VX092922\
 Data File : VX031766.D
 Acq On : 29 Sep 2022 12:27
 Operator : JC/MD
 Sample : N4848-04DL 5X
 Misc : 5.0mL/MSVOA_X/WATER
 ALS Vial : 6 Sample Multiplier: 1

Instrument :
 MSVOA_X
 ClientSampleId :
 BP-VPB-RW5-GW-638-640DL

Quant Time: Sep 29 12:51:42 2022
 Quant Method : Z:\voasrv\HPCHEM1\MSVOA_X\Method\82X092622W.M
 Quant Title : SW846 8260
 QLast Update : Tue Sep 27 01:44:18 2022
 Response via : Initial Calibration

Compound	R.T.	QIon	Response	Conc	Units	Dev(Min)

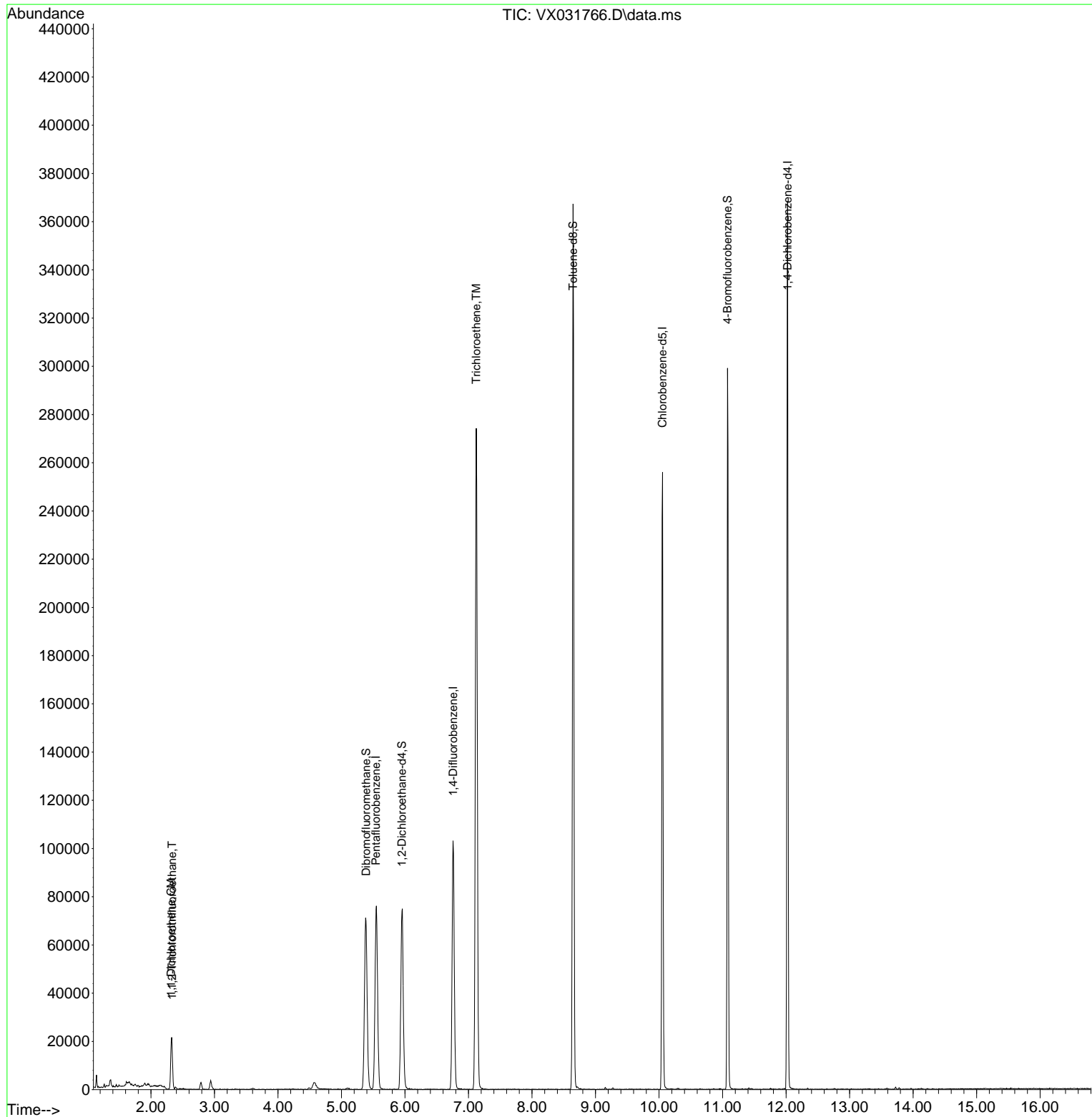
Internal Standards						
1) Pentafluorobenzene	5.544	168	71045	50.000	ug/l	-0.01
34) 1,4-Difluorobenzene	6.757	114	109186	50.000	ug/l	0.00
63) Chlorobenzene-d5	10.055	117	119981	50.000	ug/l	0.00
72) 1,4-Dichlorobenzene-d4	12.024	152	77047	50.000	ug/l	0.00
System Monitoring Compounds						
33) 1,2-Dichloroethane-d4	5.952	65	71723	47.566	ug/l	0.00
Spiked Amount	50.000	Range	74 - 125	Recovery	=	95.140%
35) Dibromofluoromethane	5.385	113	61641	47.381	ug/l	0.00
Spiked Amount	50.000	Range	75 - 124	Recovery	=	94.760%
50) Toluene-d8	8.647	98	214058	45.384	ug/l	0.00
Spiked Amount	50.000	Range	86 - 113	Recovery	=	90.760%
62) 4-Bromofluorobenzene	11.079	95	76098	44.020	ug/l	0.00
Spiked Amount	50.000	Range	83 - 123	Recovery	=	88.040%
Target Compounds						
						Qvalue
9) 1,1,2-Trichlorotrifluo...	2.331	101	6201	6.566	ug/l	95
12) 1,1-Dichloroethene	2.319	96	2905	1.289	ug/l #	75
44) Trichloroethene	7.123	130	106769	82.377	ug/l	94

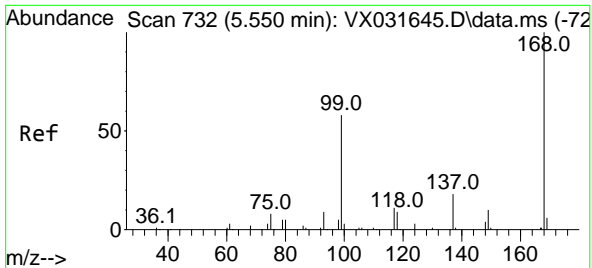
(#) = qualifier out of range (m) = manual integration (+) = signals summed

Data Path : Z:\voasrv\HPCHEM1\MSVOA_X\Data\VX092922\
 Data File : VX031766.D
 Acq On : 29 Sep 2022 12:27
 Operator : JC/MD
 Sample : N4848-04DL 5X
 Misc : 5.0mL/MSVOA_X/WATER
 ALS Vial : 6 Sample Multiplier: 1

Instrument :
 MSVOA_X
 ClientSampleId :
 BP-VPB-RW5-GW-638-640DL

Quant Time: Sep 29 12:51:42 2022
 Quant Method : Z:\voasrv\HPCHEM1\MSVOA_X\Method\82X092622W.M
 Quant Title : SW846 8260
 QLast Update : Tue Sep 27 01:44:18 2022
 Response via : Initial Calibration

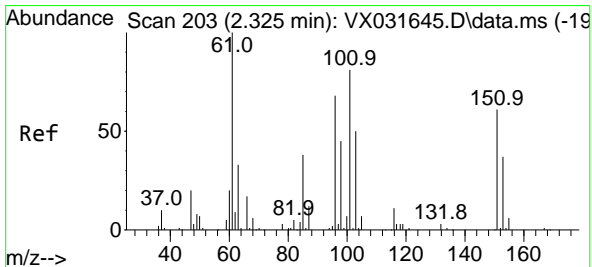
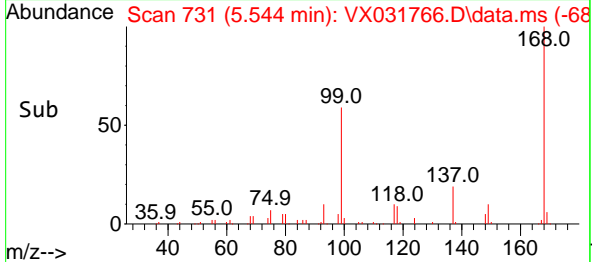
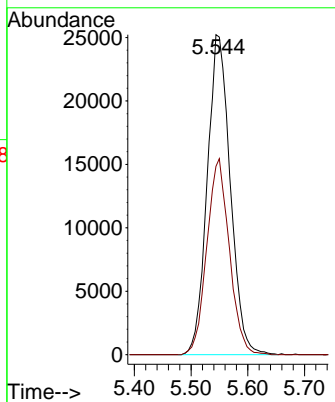
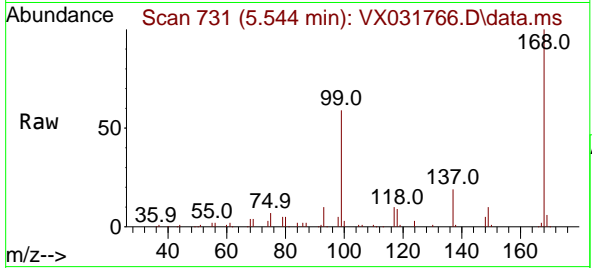




#1
 Pentafluorobenzene
 Concen: 50.000 ug/l
 RT: 5.544 min Scan# 71
 Delta R.T. -0.012 min
 Lab File: VX031766.D
 Acq: 29 Sep 2022 12:27

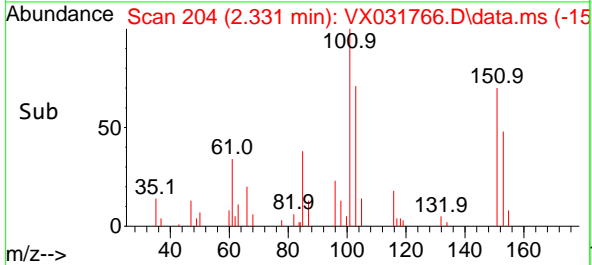
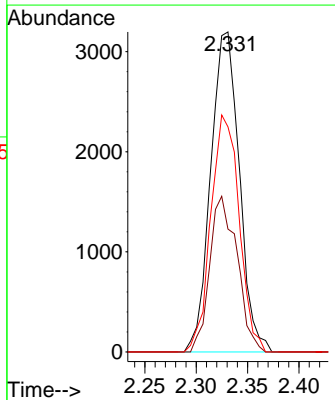
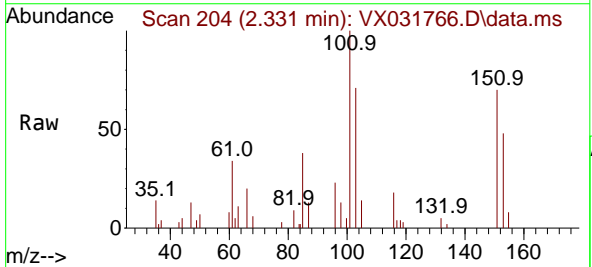
Instrument : MSVOA_X
 ClientSampleId : BP-VPB-RW5-GW-638-640DL

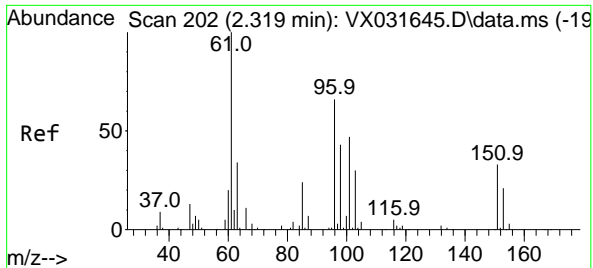
Tgt Ion:168 Resp: 71045
 Ion Ratio Lower Upper
 168 100
 99 58.9 48.8 73.2



#9
 1,1,2-Trichlorotrifluoroethane
 Concen: 6.566 ug/l
 RT: 2.331 min Scan# 204
 Delta R.T. -0.000 min
 Lab File: VX031766.D
 Acq: 29 Sep 2022 12:27

Tgt Ion:101 Resp: 6201
 Ion Ratio Lower Upper
 101 100
 85 46.6 38.6 57.8
 151 73.3 54.0 81.0



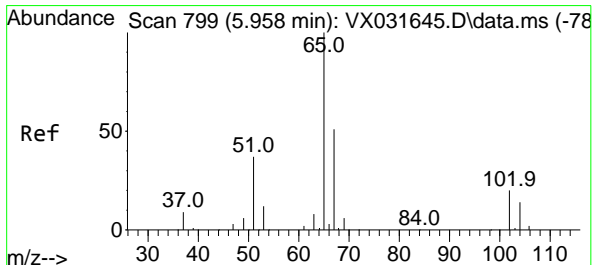
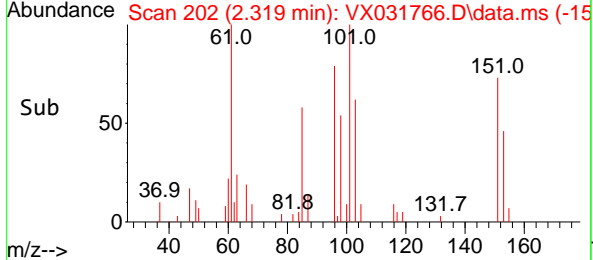
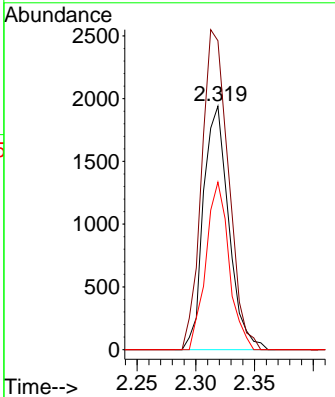
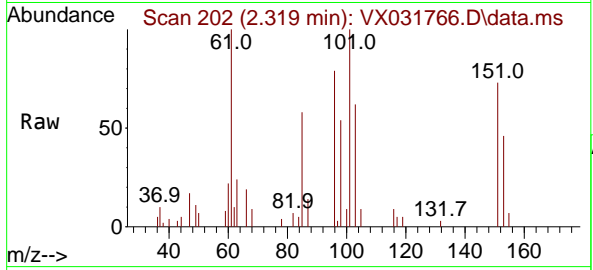


#12
 1,1-Dichloroethene
 Concen: 1.289 ug/l
 RT: 2.319 min Scan# 202
 Delta R.T. -0.000 min
 Lab File: VX031766.D
 Acq: 29 Sep 2022 12:27

Instrument : MSVOA_X
 ClientSampleId : BP-VPB-RW5-GW-638-640DL

Tgt Ion: 96 Resp: 2905

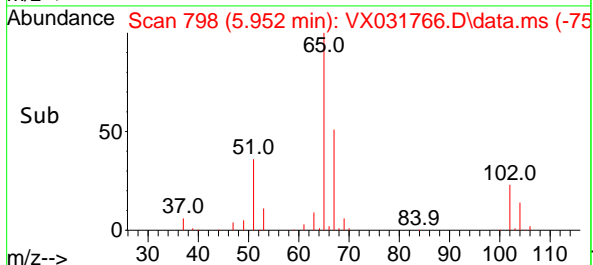
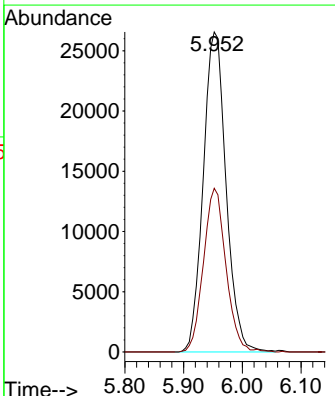
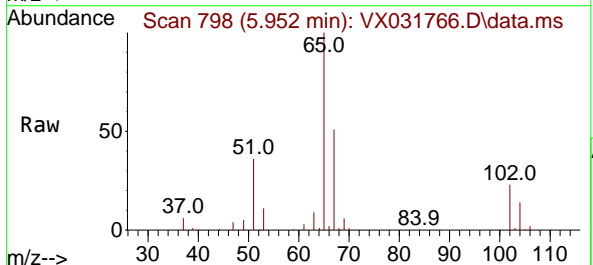
Ion	Ratio	Lower	Upper
96	100		
61	126.9	135.3	202.9#
98	68.8	49.4	74.2

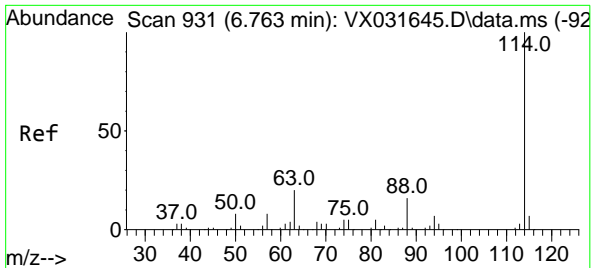


#33
 1,2-Dichloroethane-d4
 Concen: 47.566 ug/l
 RT: 5.952 min Scan# 798
 Delta R.T. -0.006 min
 Lab File: VX031766.D
 Acq: 29 Sep 2022 12:27

Tgt Ion: 65 Resp: 71723

Ion	Ratio	Lower	Upper
65	100		
67	50.4	0.0	102.4



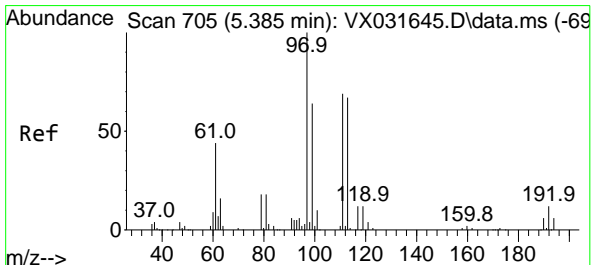
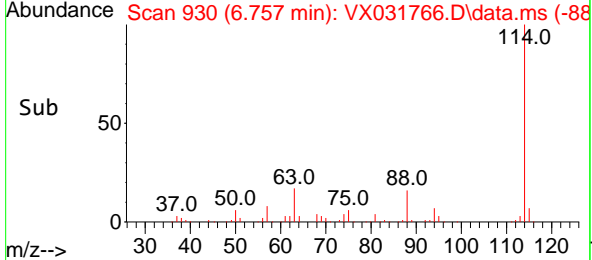
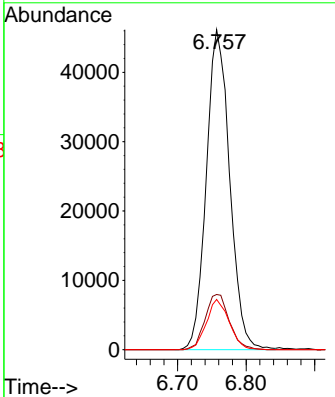
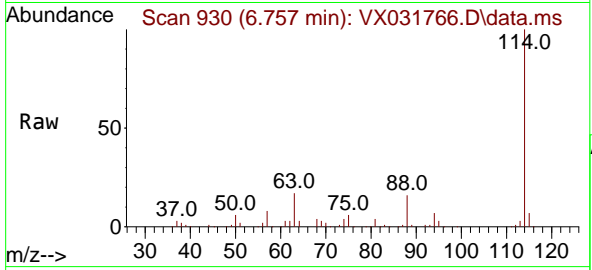


#34
 1,4-Difluorobenzene
 Concen: 50.000 ug/l
 RT: 6.757 min Scan# 911
 Delta R.T. -0.006 min
 Lab File: VX031766.D
 Acq: 29 Sep 2022 12:27

Instrument : MSVOA_X
 ClientSampleId : BP-VPB-RW5-GW-638-640DL

Tgt Ion:114 Resp: 109186

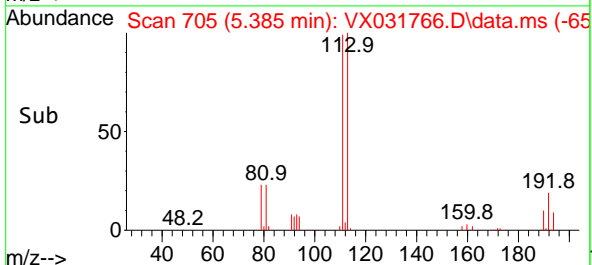
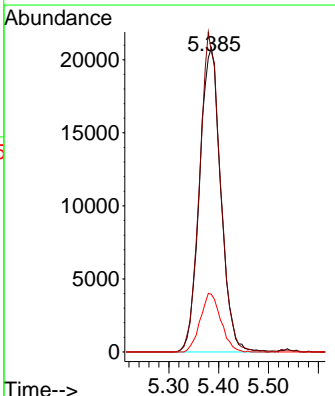
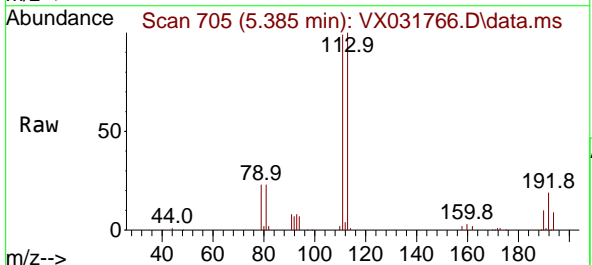
Ion	Ratio	Lower	Upper
114	100		
63	17.2	0.0	42.6
88	15.7	0.0	33.0

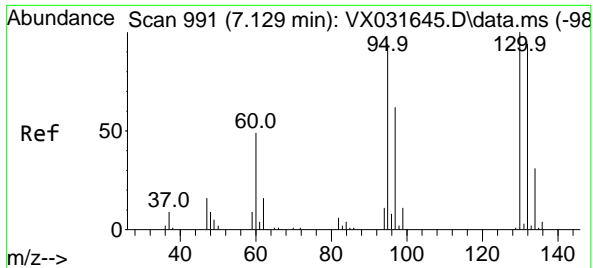


#35
 Dibromofluoromethane
 Concen: 47.381 ug/l
 RT: 5.385 min Scan# 705
 Delta R.T. -0.006 min
 Lab File: VX031766.D
 Acq: 29 Sep 2022 12:27

Tgt Ion:113 Resp: 61641

Ion	Ratio	Lower	Upper
113	100		
111	102.2	82.4	123.6
192	18.6	14.1	21.1

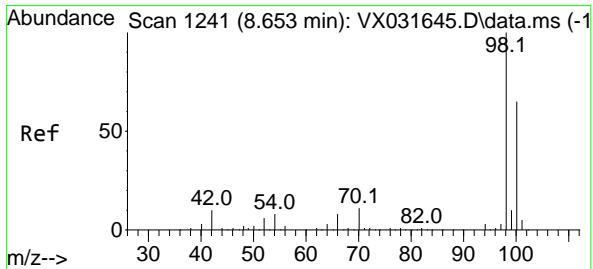
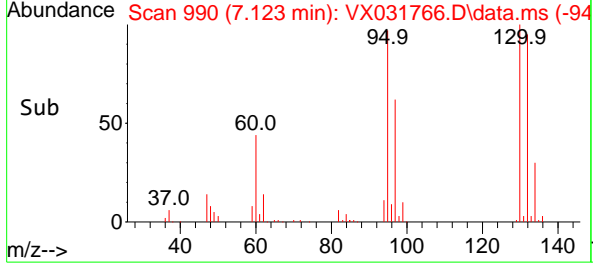
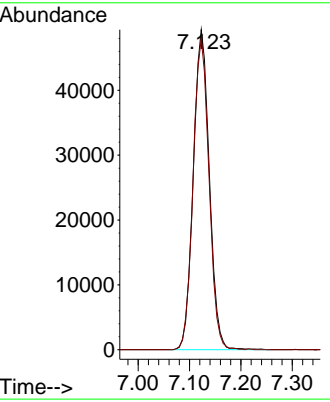
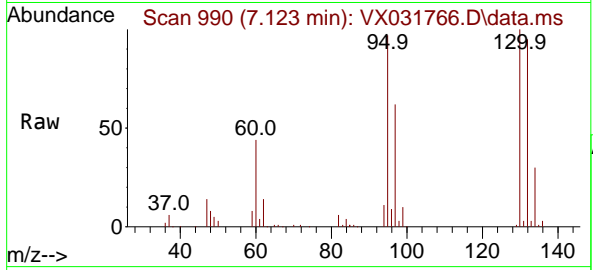




#44
 Trichloroethene
 Concen: 82.377 ug/l
 RT: 7.123 min Scan# 94
 Delta R.T. -0.006 min
 Lab File: VX031766.D
 Acq: 29 Sep 2022 12:27

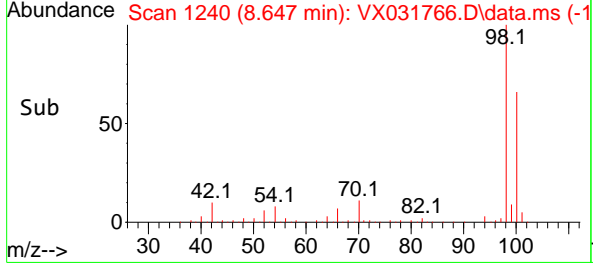
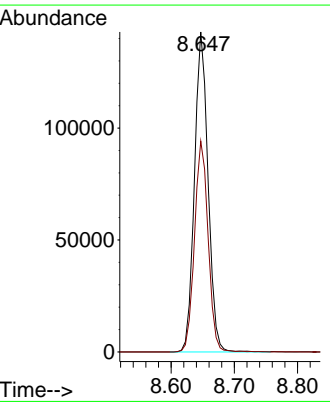
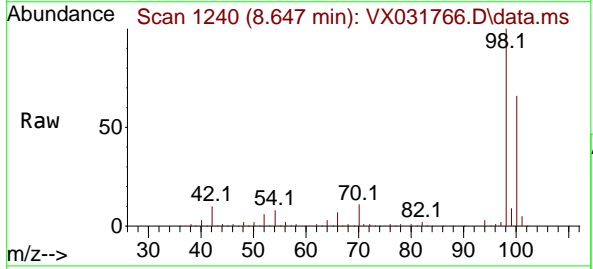
Instrument : MSVOA_X
 ClientSampleId : BP-VPB-RW5-GW-638-640DL

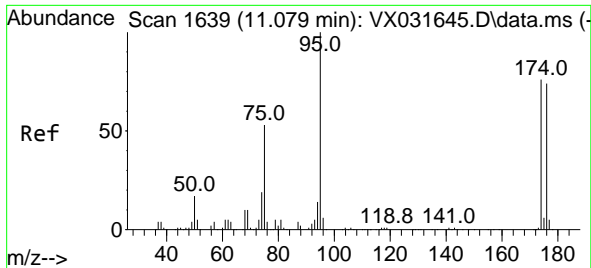
Tgt Ion:130 Resp: 106769
 Ion Ratio Lower Upper
 130 100
 95 97.3 0.0 206.8



#50
 Toluene-d8
 Concen: 45.384 ug/l
 RT: 8.647 min Scan# 1240
 Delta R.T. -0.006 min
 Lab File: VX031766.D
 Acq: 29 Sep 2022 12:27

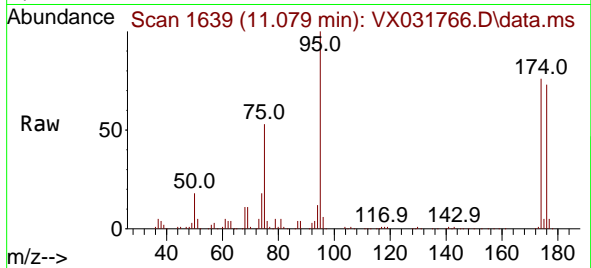
Tgt Ion: 98 Resp: 214058
 Ion Ratio Lower Upper
 98 100
 100 66.1 52.5 78.7





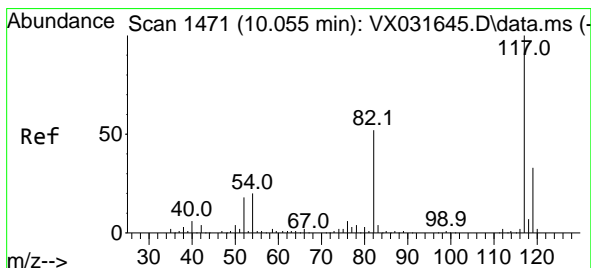
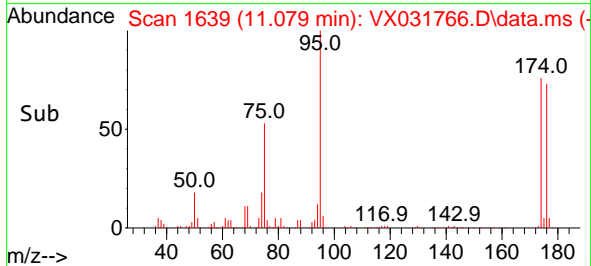
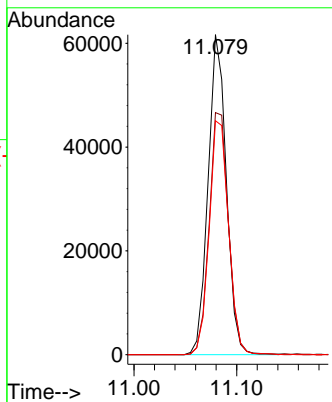
#62
 4-Bromofluorobenzene
 Concen: 44.020 ug/l
 RT: 11.079 min Scan# 1639
 Delta R.T. 0.000 min
 Lab File: VX031766.D
 Acq: 29 Sep 2022 12:27

Instrument : MSVOA_X
 ClientSampleId : BP-VPB-RW5-GW-638-640DL



Tgt Ion: 95 Resp: 76098

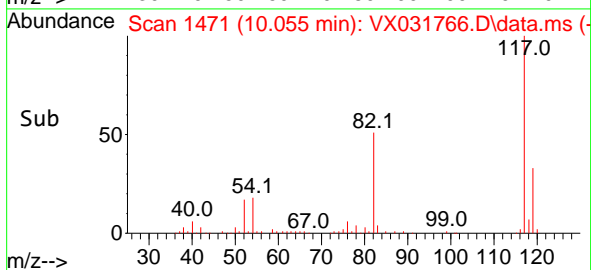
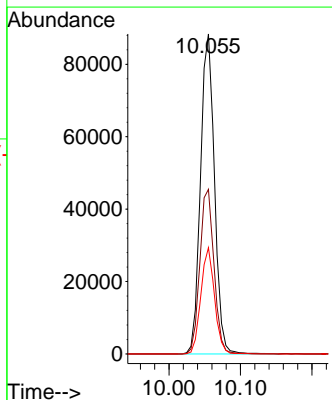
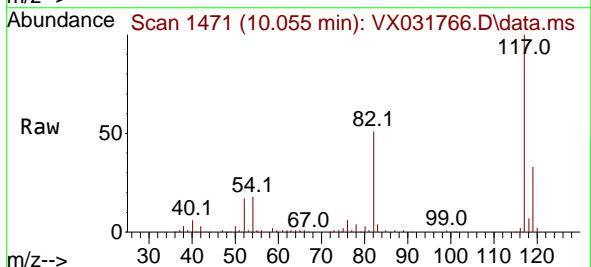
Ion	Ratio	Lower	Upper
95	100		
174	79.9	0.0	153.2
176	77.6	0.0	144.0

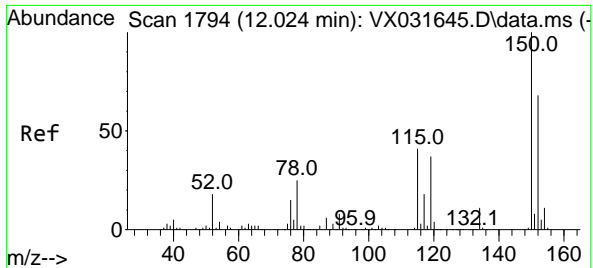


#63
 Chlorobenzene-d5
 Concen: 50.000 ug/l
 RT: 10.055 min Scan# 1471
 Delta R.T. 0.000 min
 Lab File: VX031766.D
 Acq: 29 Sep 2022 12:27

Tgt Ion: 117 Resp: 119981

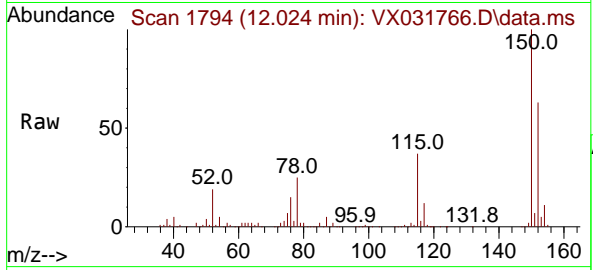
Ion	Ratio	Lower	Upper
117	100		
82	51.5	46.8	70.2
119	33.2	26.4	39.6





#72
 1,4-Dichlorobenzene-d4
 Concen: 50.000 ug/l
 RT: 12.024 min Scan# 11
 Delta R.T. 0.000 min
 Lab File: VX031766.D
 Acq: 29 Sep 2022 12:27

Instrument : MSVOA_X
 ClientSampleId : BP-VPB-RW5-GW-638-640DL



Tgt Ion:152 Resp: 77047

Ion	Ratio	Lower	Upper
152	100		
115	59.1	43.4	130.1
150	157.8	0.0	346.8

