

Data Path : Z:\voasrv\HPCHEM1\MSVOA_X\Data\VX092923\
 Data File : VX037980.D
 Acq On : 29 Sep 2023 16:56
 Operator : JC/MD
 Sample : 04656-13
 Misc : 5.0mL/MSVOA_X/WATER
 ALS Vial : 19 Sample Multiplier: 1

Instrument :
 MSVOA_X
 ClientSampleId :
 MW-104I

Integration Parameters: RTEINT.P

Integrator: RTE
 Smoothing : ON Filtering: 5
 Sampling : 1 Min Area: 3 % of largest Peak
 Start Thrs: 0.2 Max Peaks: 100
 Stop Thrs : 0 Peak Location: TOP

If leading or trailing edge < 100 prefer < Baseline drop else tangent >
 Peak separation: 5

Method : Z:\voasrv\HPCHEM1\MSVOA_X\Method\82X091523W.M
 Title : SW846 8260

Signal : TIC: VX037980.D\data.ms

peak #	R.T. min	first scan	max scan	last scan	PK TY	peak height	corr. area	corr. % max.	% of total
1	5.385	692	705	721	rBV2	125905	371740	33.06%	5.941%
2	5.556	721	733	750	rVB	216294	610122	54.26%	9.751%
3	5.958	790	799	817	rBV	137476	366429	32.59%	5.856%
4	6.763	921	931	948	rBV	338083	808030	71.87%	12.914%
5	8.647	1234	1240	1261	rBV	686561	1120941	99.70%	17.915%
6	10.055	1465	1471	1487	rBV	778516	1037036	92.23%	16.574%
7	11.079	1634	1639	1657	rBV	629285	818198	72.77%	13.077%
8	12.024	1788	1794	1806	rBV	864198	1124342	100.00%	17.970%

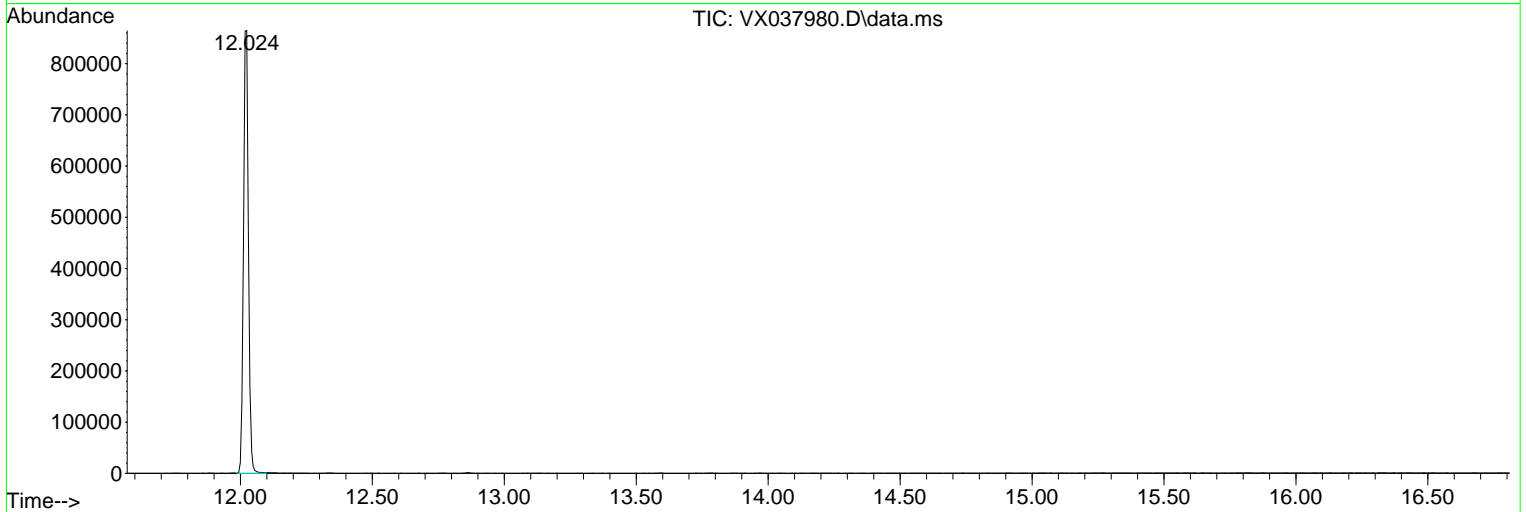
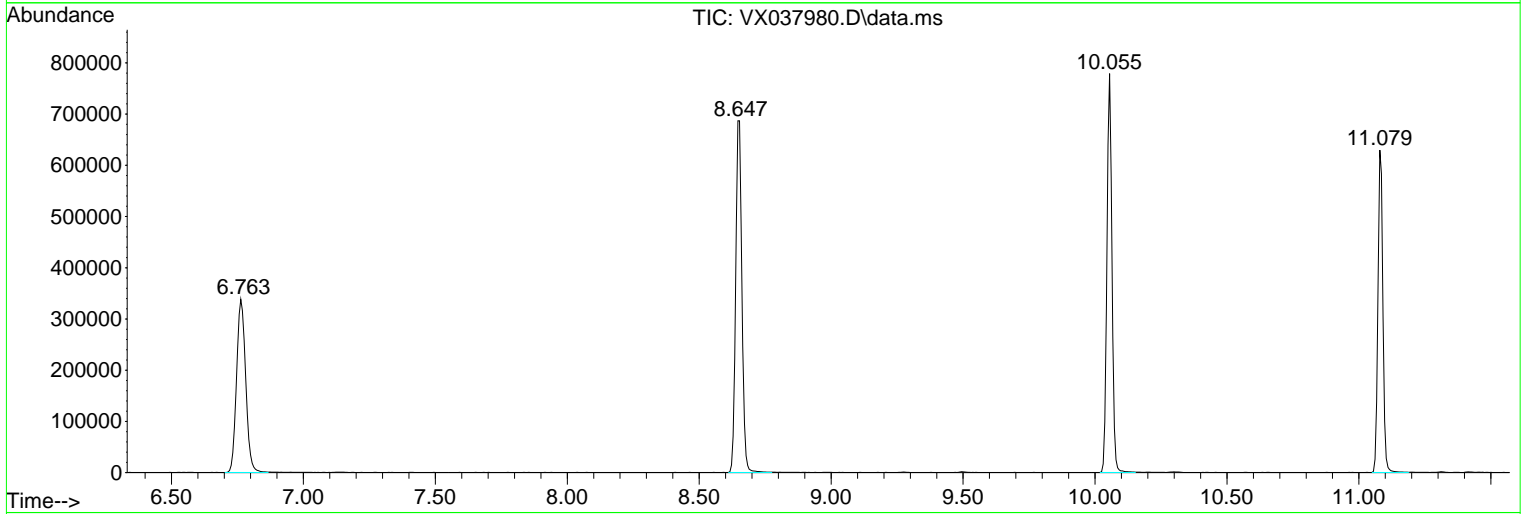
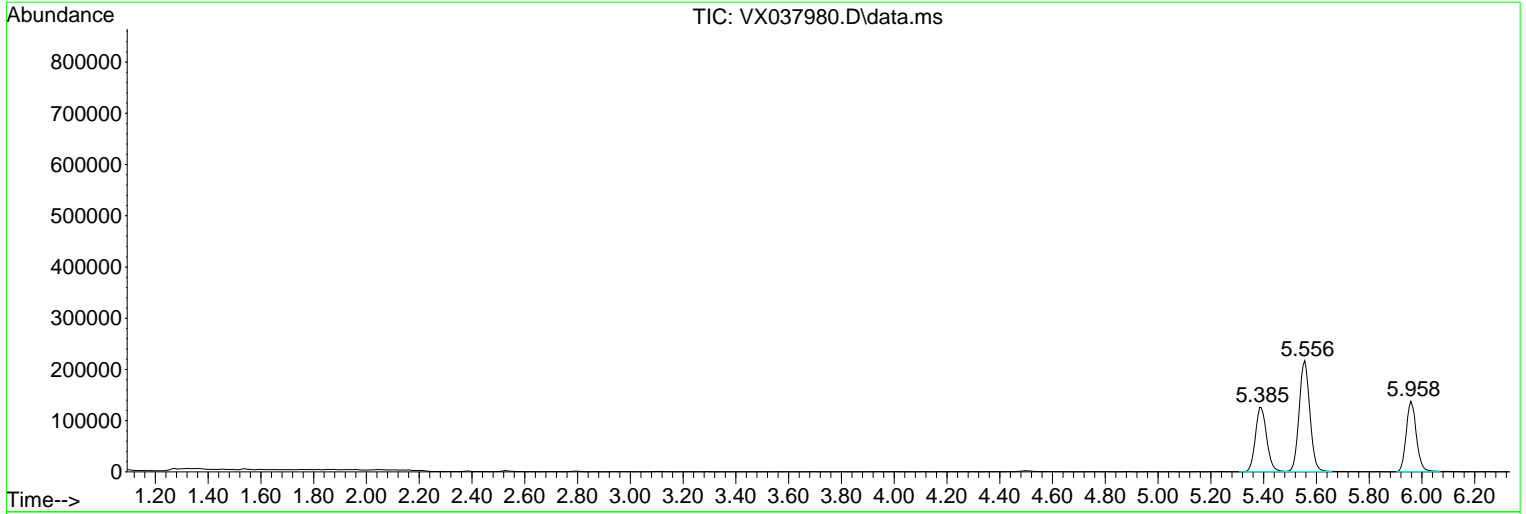
Sum of corrected areas: 6256838

Data Path : Z:\voasrv\HPCHEM1\MSVOA_X\Data\VX092923\
 Data File : VX037980.D
 Acq On : 29 Sep 2023 16:56
 Operator : JC/MD
 Sample : 04656-13
 Misc : 5.0mL/MSVOA_X/WATER
 ALS Vial : 19 Sample Multiplier: 1

Instrument :
 MSVOA_X
 ClientSampleId :
 MW-104I

Quant Method : Z:\voasrv\HPCHEM1\MSVOA_X\Method\82X091523W.M
 Quant Title : SW846 8260

TIC Library : C:\Database\NIST20.L
 TIC Integration Parameters: LSCINT.P



Library Search Compound Report

Data Path : Z:\voasrv\HPCHEM1\MSVOA_X\Data\VX092923\
Data File : VX037980.D
Acq On : 29 Sep 2023 16:56
Operator : JC/MD
Sample : 04656-13
Misc : 5.0mL/MSVOA_X/WATER
ALS Vial : 19 Sample Multiplier: 1

Instrument :
MSVOA_X
ClientSampleId :
MW-104I

Quant Method : Z:\voasrv\HPCHEM1\MSVOA_X\Method\82X091523W.M
Quant Title : SW846 8260

TIC Library : C:\Database\NIST20.L
TIC Integration Parameters: LSCINT.P

No Library Search Compounds Detected

Data Path : Z:\voasrv\HPCHEM1\MSVOA_X\Data\VX092923\
Data File : VX037980.D
Acq On : 29 Sep 2023 16:56
Operator : JC/MD
Sample : 04656-13
Misc : 5.0mL/MSVOA_X/WATER
ALS Vial : 19 Sample Multiplier: 1

Instrument :
MSVOA_X
ClientSampleId :
MW-104I

Quant Method : Z:\voasrv\HPCHEM1\MSVOA_X\Method\82X091523W.M
Quant Title : SW846 8260

TIC Library : C:\Database\NIST20.L
TIC Integration Parameters: LSCINT.P

TIC Top Hit name	RT	EstConc	Units	Response	--Internal Standard--			
					#	RT	Resp	Conc
