

Data Path : Z:\voasrv\HPCHEM1\MSVOA_X\Data\VX092925\
 Data File : VX047870.D
 Acq On : 29 Sep 2025 09:48
 Operator : JC/MD
 Sample : VX0929WBL01
 Misc : 5.0mL/MSVOA_X/WATER
 ALS Vial : 4 Sample Multiplier: 1

Instrument :
 MSVOA_X
 ClientSampleId :
 VX0929WBL01

Quant Time: Sep 30 01:15:03 2025
 Quant Method : Z:\voasrv\HPCHEM1\MSVOA_X\Method\82X091625W.M
 Quant Title : SW846 8260
 QLast Update : Wed Sep 17 06:39:58 2025
 Response via : Initial Calibration

Compound	R.T.	QIon	Response	Conc	Units	Dev(Min)

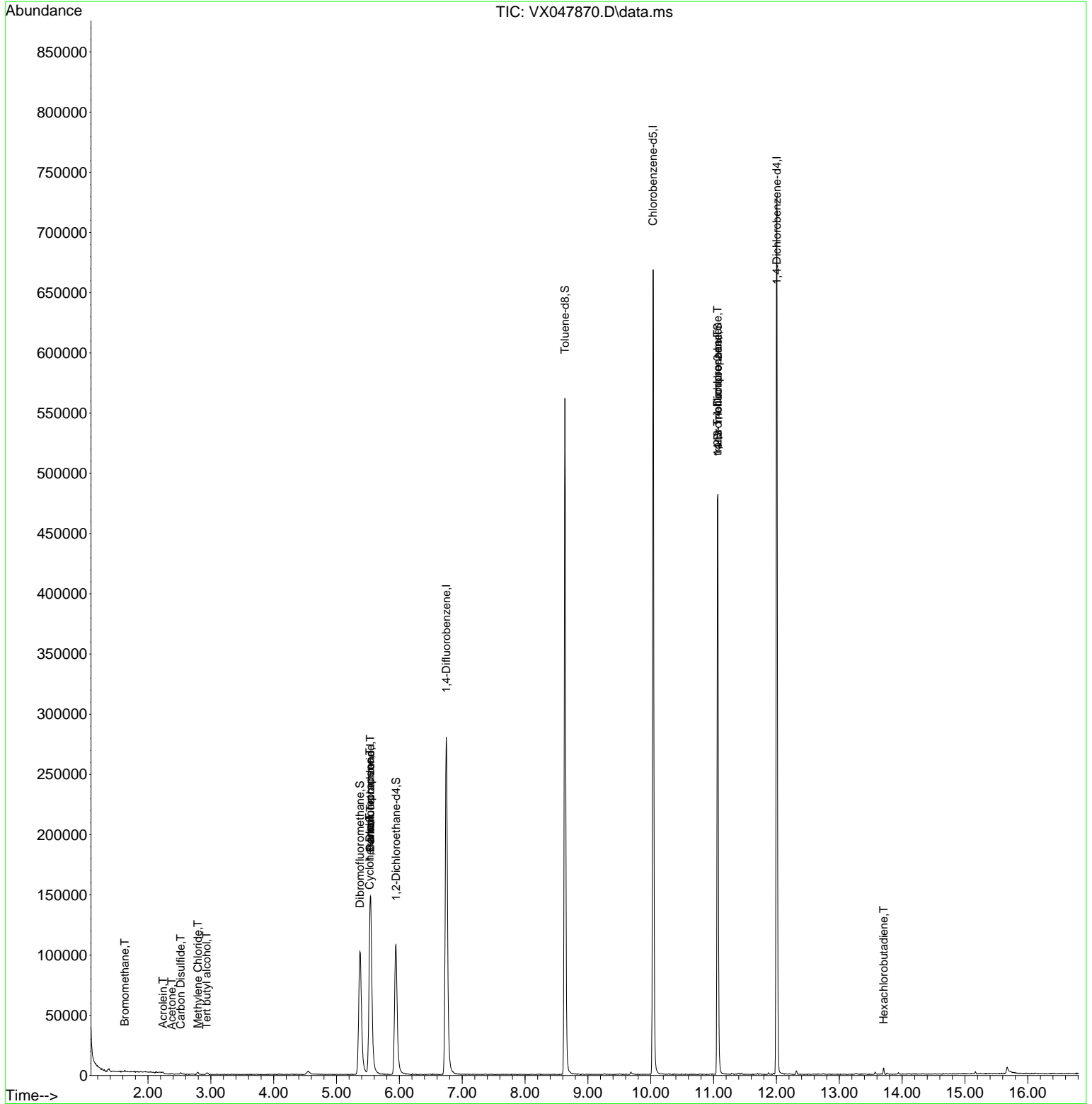
Internal Standards						
1) Pentafluorobenzene	5.538	168	151039	50.000	ug/l	0.00
34) 1,4-Difluorobenzene	6.745	114	304108	50.000	ug/l	0.00
63) Chlorobenzene-d5	10.037	117	305847	50.000	ug/l	0.00
72) 1,4-Dichlorobenzene-d4	12.006	152	151711	50.000	ug/l	0.00
System Monitoring Compounds						
33) 1,2-Dichloroethane-d4	5.946	65	118516	49.296	ug/l	0.00
Spiked Amount	50.000	Range 78 - 117	Recovery	=	98.600%	
35) Dibromofluoromethane	5.373	113	99558	48.815	ug/l	0.00
Spiked Amount	50.000	Range 75 - 124	Recovery	=	97.620%	
50) Toluene-d8	8.635	98	342151	48.483	ug/l	0.00
Spiked Amount	50.000	Range 92 - 112	Recovery	=	96.960%	
62) 4-Bromofluorobenzene	11.067	95	142267	53.118	ug/l	0.00
Spiked Amount	50.000	Range 83 - 123	Recovery	=	106.240%	
Target Compounds						
						Qvalue
5) Bromomethane	1.630	94	306	0.240	ug/l	82
11) Tert butyl alcohol	2.934	59	599	2.237	ug/l #	72
13) Acrolein	2.240	56	50	0.203	ug/l #	1
16) Acetone	2.380	43	782	0.748	ug/l #	70
17) Carbon Disulfide	2.520	76	1078	0.219	ug/l #	84
20) Methylene Chloride	2.794	84	706	0.319	ug/l #	79
31) Cyclohexane	5.525	56	1048	0.330	ug/l #	1
36) 1,1-Dichloropropene	5.532	75	12595	4.226	ug/l #	51
38) Carbon Tetrachloride	5.538	117	16049	4.956	ug/l #	18
76) 1,2,3-Trichloropropane	11.061	75	73599	23.961	ug/l #	40
81) trans-1,4-Dichloro-2-b...	11.061	75	73599	61.103	ug/l #	8
94) Hexachlorobutadiene	13.707	225	700	0.631	ug/l	99

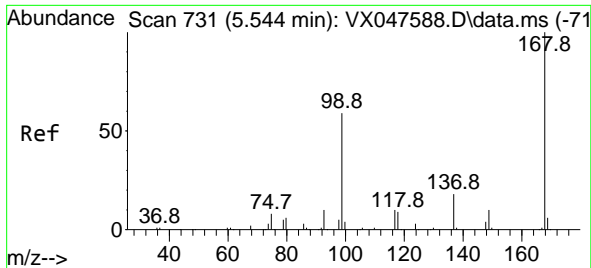
(#) = qualifier out of range (m) = manual integration (+) = signals summed

Data Path : Z:\voasrv\HPCHEM1\MSVOA_X\Data\VX092925\
 Data File : VX047870.D
 Acq On : 29 Sep 2025 09:48
 Operator : JC/MD
 Sample : VX0929WBL01
 Misc : 5.0mL/MSVOA_X/WATER
 ALS Vial : 4 Sample Multiplier: 1

Instrument :
 MSVOA_X
 ClientSampleId :
 VX0929WBL01

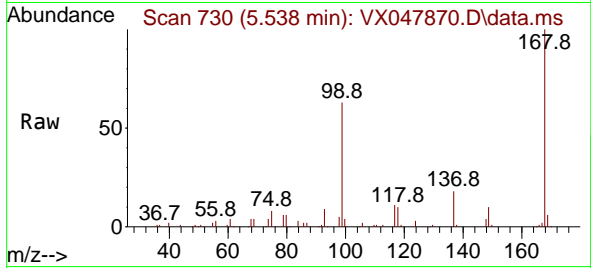
Quant Time: Sep 30 01:15:03 2025
 Quant Method : Z:\voasrv\HPCHEM1\MSVOA_X\Method\82X091625W.M
 Quant Title : SW846 8260
 QLast Update : Wed Sep 17 06:39:58 2025
 Response via : Initial Calibration



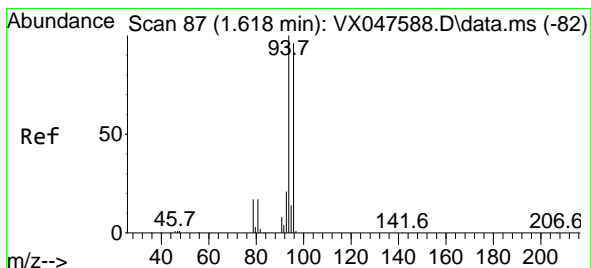
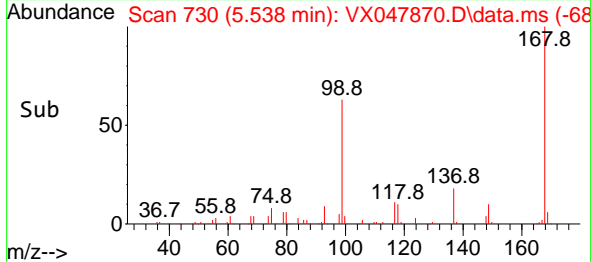
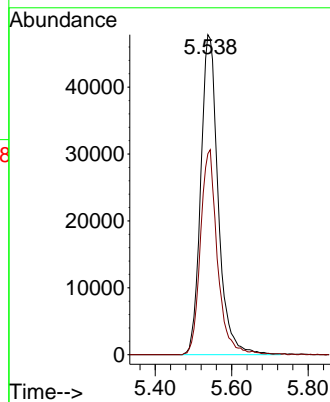


#1
 Pentafluorobenzene
 Concen: 50.000 ug/l
 RT: 5.538 min Scan# 71
 Delta R.T. -0.006 min
 Lab File: VX047870.D
 Acq: 29 Sep 2025 09:48

Instrument :
 MSVOA_X
 ClientSampleId :
 VX0929WBL01

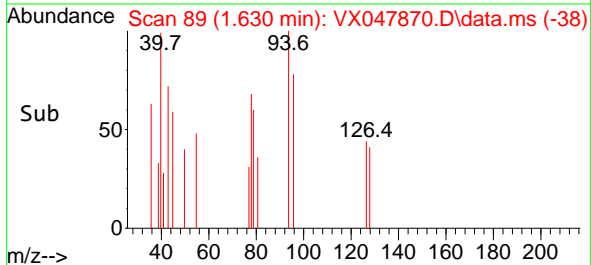
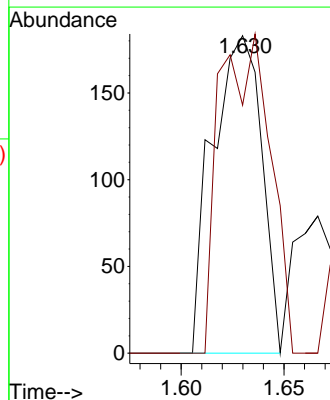
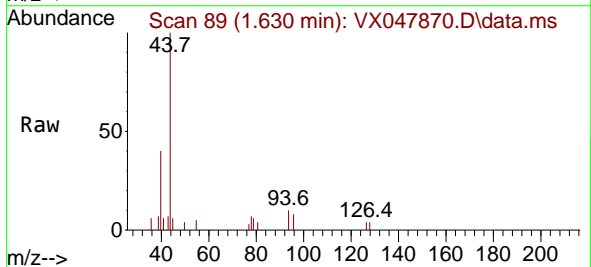


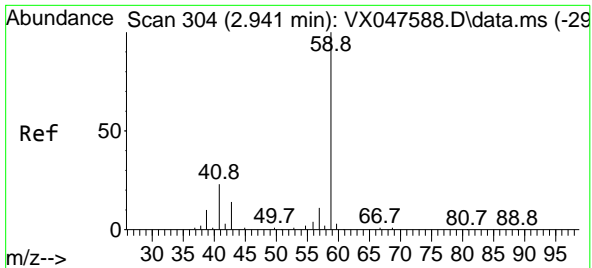
Tgt Ion:168 Resp: 151039
 Ion Ratio Lower Upper
 168 100
 99 62.8 48.8 73.2



#5
 Bromomethane
 Concen: 0.240 ug/l
 RT: 1.630 min Scan# 89
 Delta R.T. 0.012 min
 Lab File: VX047870.D
 Acq: 29 Sep 2025 09:48

Tgt Ion: 94 Resp: 306
 Ion Ratio Lower Upper
 94 100
 96 78.1 76.6 115.0

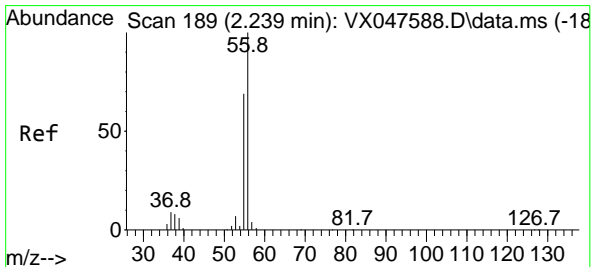
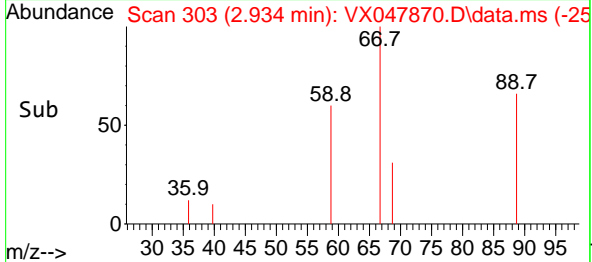
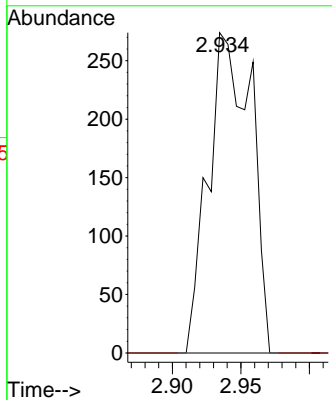
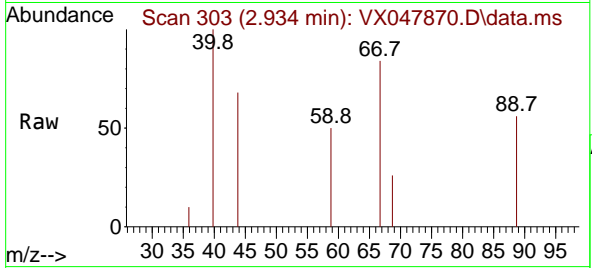




#11
 Tert butyl alcohol
 Concen: 2.237 ug/l
 RT: 2.934 min Scan# 30
 Delta R.T. -0.006 min
 Lab File: VX047870.D
 Acq: 29 Sep 2025 09:48

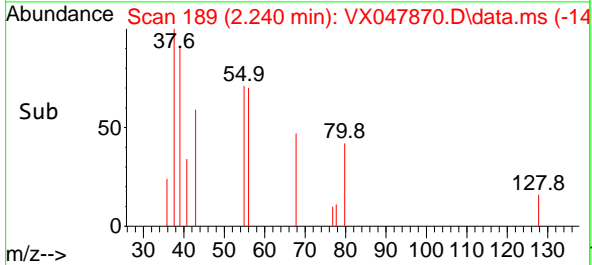
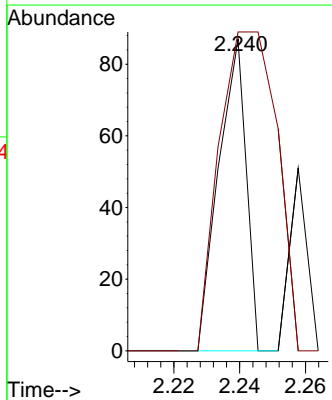
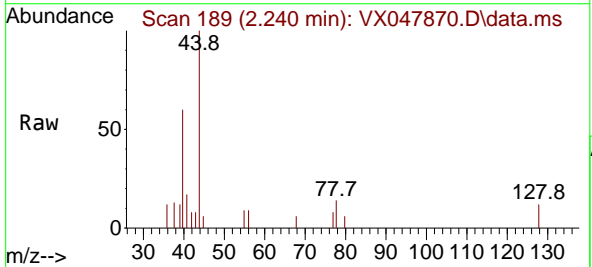
Instrument : MSVOA_X
 ClientSampleId : VX0929WBL01

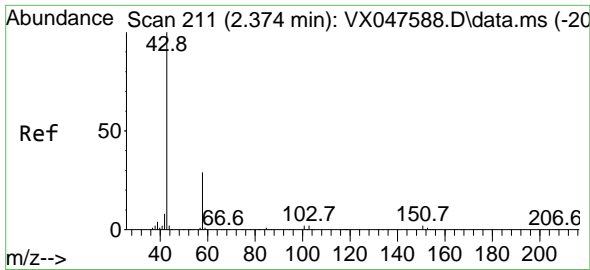
Tgt Ion: 59 Resp: 599
 Ion Ratio Lower Upper
 59 100
 57 0.0 8.3 12.5#



#13
 Acrolein
 Concen: 0.203 ug/l
 RT: 2.240 min Scan# 189
 Delta R.T. 0.000 min
 Lab File: VX047870.D
 Acq: 29 Sep 2025 09:48

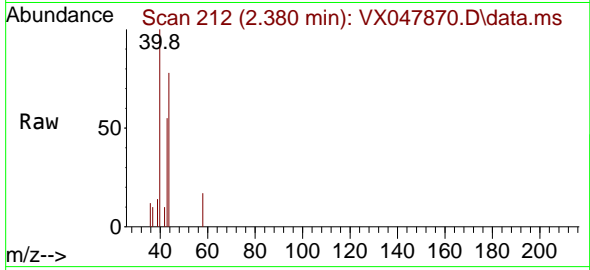
Tgt Ion: 56 Resp: 50
 Ion Ratio Lower Upper
 56 100
 55 218.0 57.2 85.8#



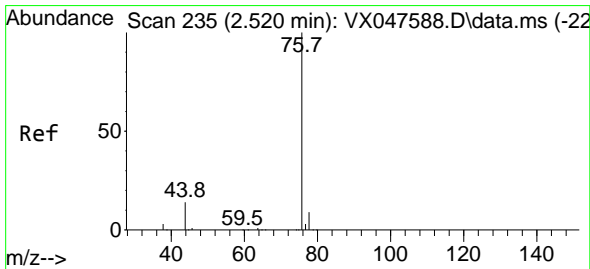
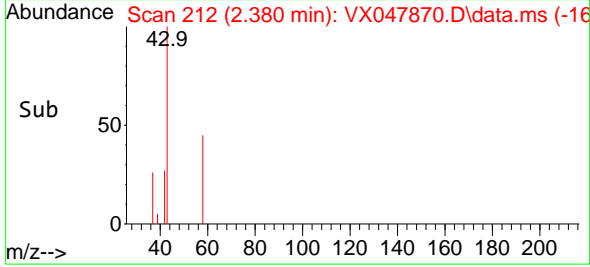
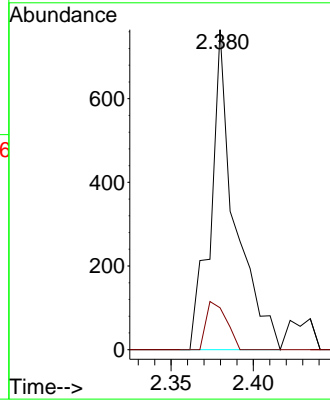


#16
 Acetone
 Concen: 0.748 ug/l
 RT: 2.380 min Scan# 211
 Delta R.T. 0.006 min
 Lab File: VX047870.D
 Acq: 29 Sep 2025 09:48

Instrument : MSVOA_X
 ClientSampleId : VX0929WBL01

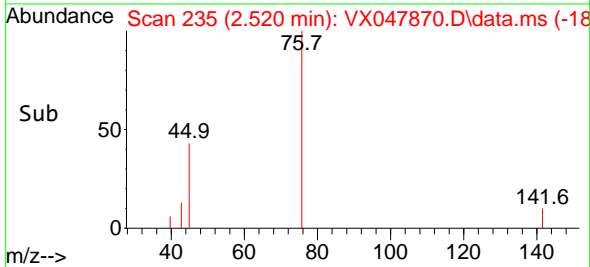
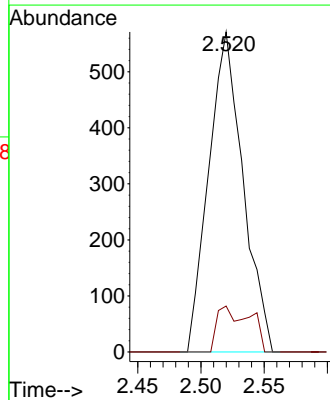
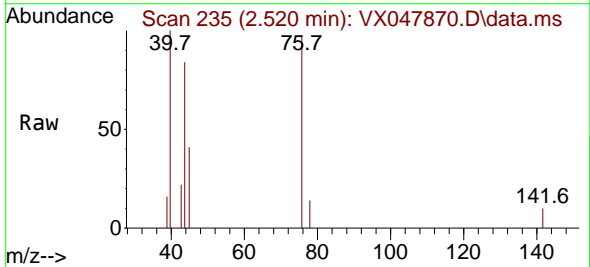


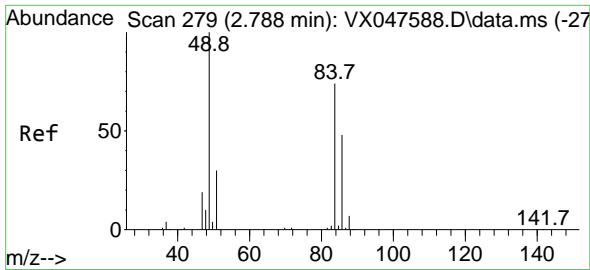
Tgt Ion: 43 Resp: 782
 Ion Ratio Lower Upper
 43 100
 58 13.1 23.4 35.0#



#17
 Carbon Disulfide
 Concen: 0.219 ug/l
 RT: 2.520 min Scan# 235
 Delta R.T. 0.000 min
 Lab File: VX047870.D
 Acq: 29 Sep 2025 09:48

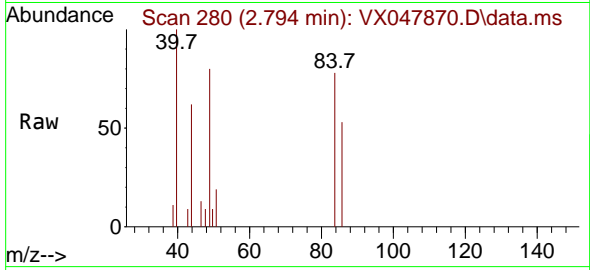
Tgt Ion: 76 Resp: 1078
 Ion Ratio Lower Upper
 76 100
 78 14.4 6.8 10.2#



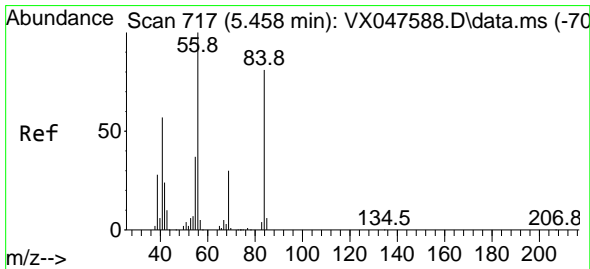
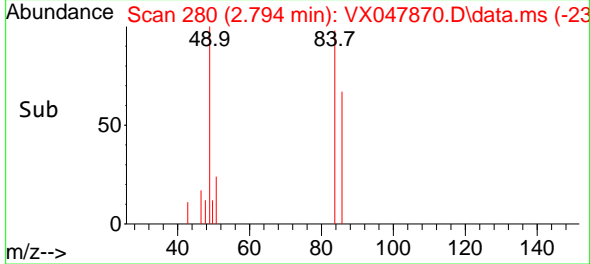
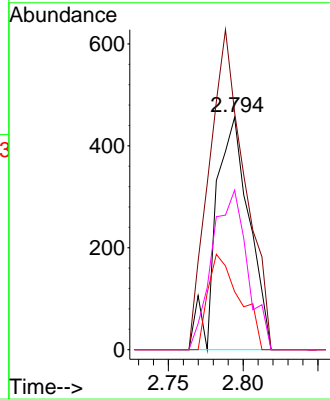


#20
 Methylene Chloride
 Concen: 0.319 ug/l
 RT: 2.794 min Scan# 21
 Delta R.T. 0.006 min
 Lab File: VX047870.D
 Acq: 29 Sep 2025 09:48

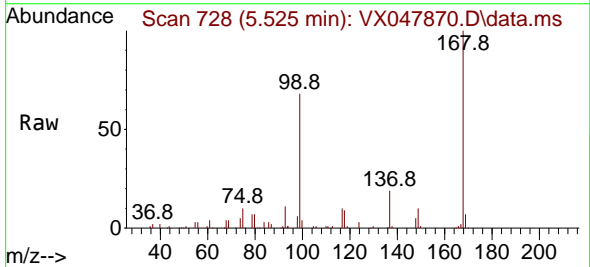
Instrument : MSVOA_X
 ClientSampleId : VX0929WBL01



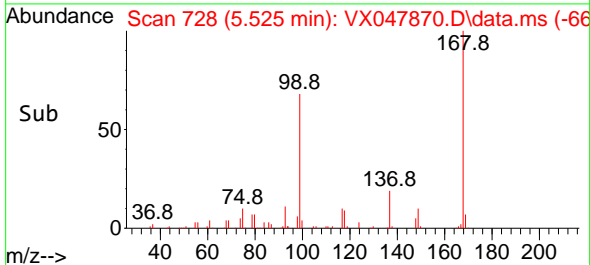
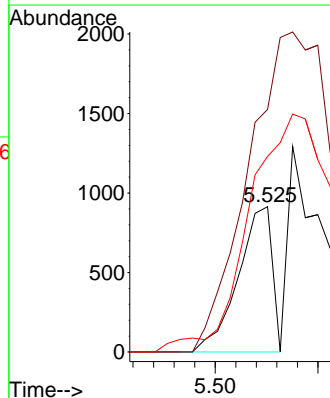
Tgt Ion: 84 Resp: 706
 Ion Ratio Lower Upper
 84 100
 49 102.2 108.6 162.8#
 51 25.0 32.6 48.8#
 86 68.6 52.0 78.0

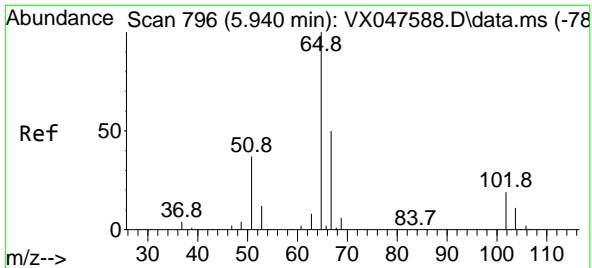


#31
 Cyclohexane
 Concen: 0.330 ug/l
 RT: 5.525 min Scan# 728
 Delta R.T. 0.067 min
 Lab File: VX047870.D
 Acq: 29 Sep 2025 09:48



Tgt Ion: 56 Resp: 1048
 Ion Ratio Lower Upper
 56 100
 69 167.0 23.8 35.8#
 84 125.9 64.6 97.0#





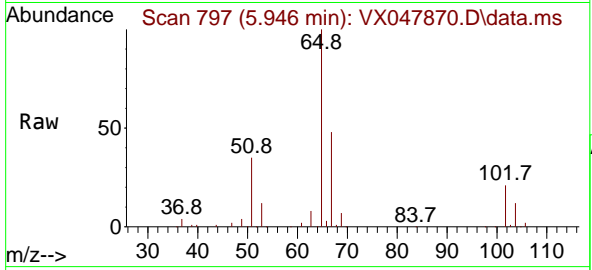
#33
 1,2-Dichloroethane-d4
 Concen: 49.296 ug/l
 RT: 5.946 min Scan# 796
 Delta R.T. 0.006 min
 Lab File: VX047870.D
 Acq: 29 Sep 2025 09:48

Instrument :

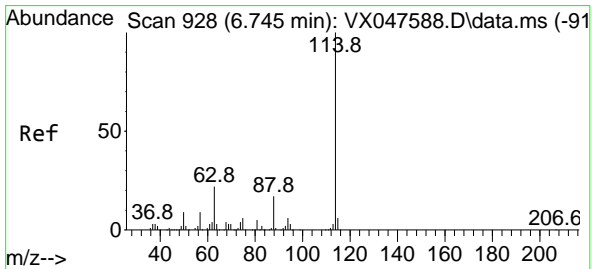
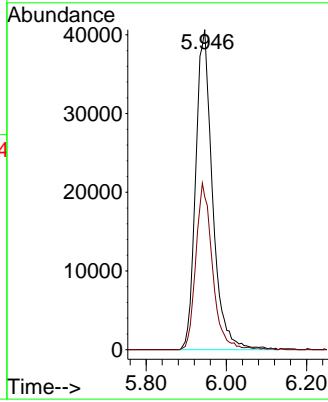
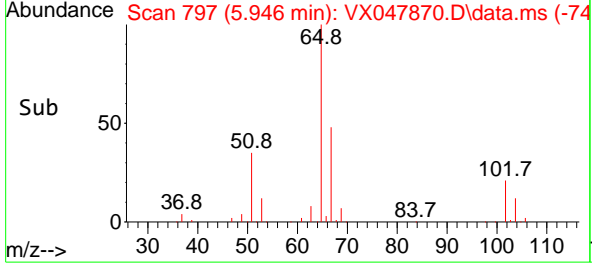
MSVOA_X

ClientSampleId :

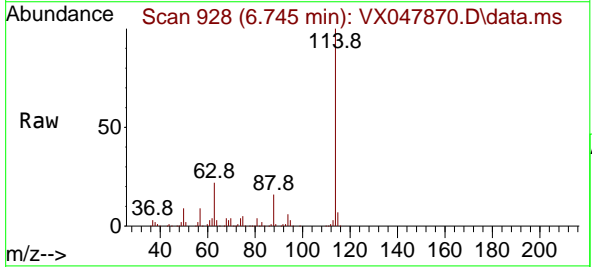
VX0929WBL01



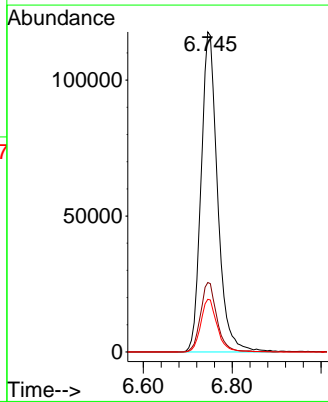
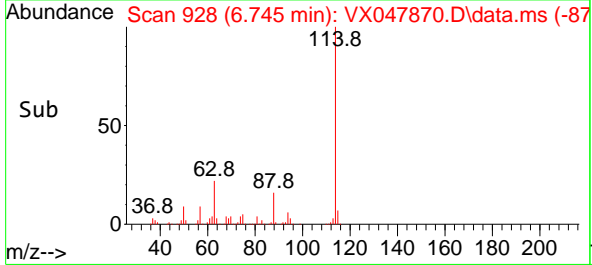
Tgt Ion: 65 Resp: 118516
 Ion Ratio Lower Upper
 65 100
 67 50.8 0.0 103.0

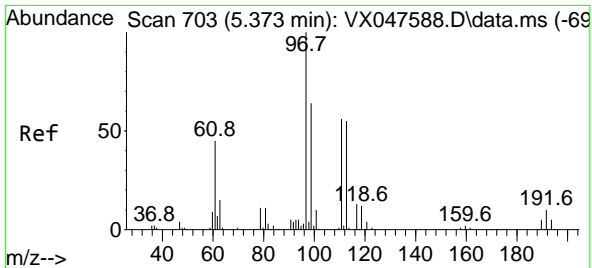


#34
 1,4-Difluorobenzene
 Concen: 50.000 ug/l
 RT: 6.745 min Scan# 928
 Delta R.T. 0.000 min
 Lab File: VX047870.D
 Acq: 29 Sep 2025 09:48



Tgt Ion: 114 Resp: 304108
 Ion Ratio Lower Upper
 114 100
 63 21.7 0.0 44.0
 88 16.4 0.0 34.2

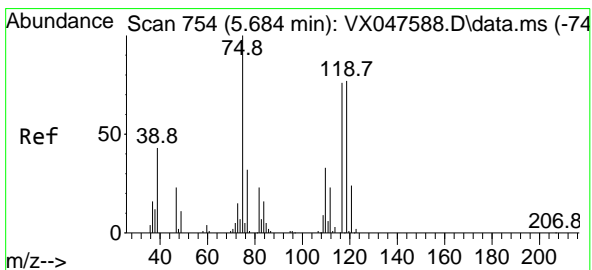
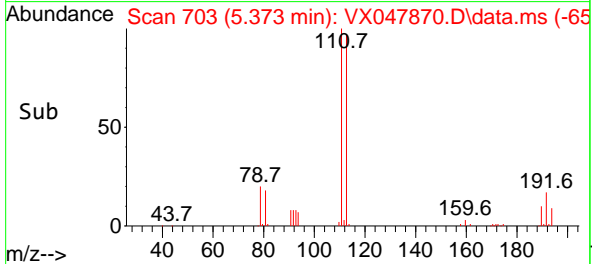
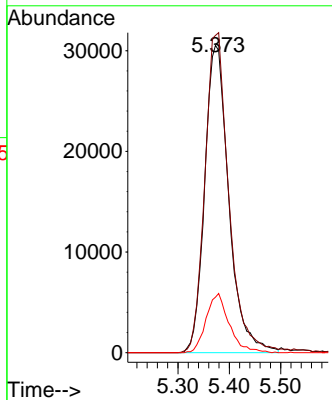
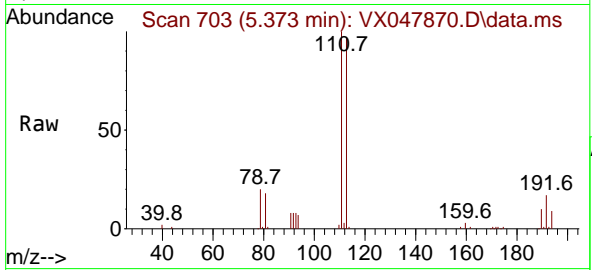




#35
 Dibromofluoromethane
 Concen: 48.815 ug/l
 RT: 5.373 min Scan# 703
 Delta R.T. 0.000 min
 Lab File: VX047870.D
 Acq: 29 Sep 2025 09:48

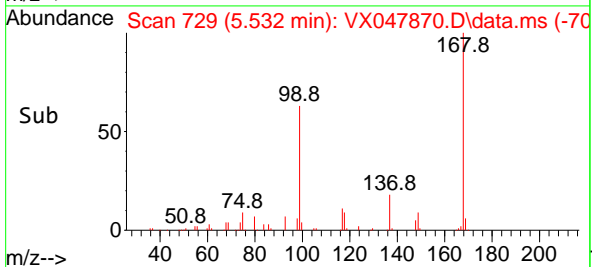
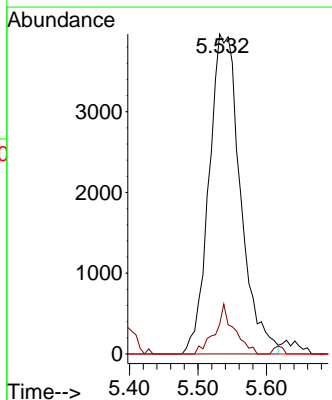
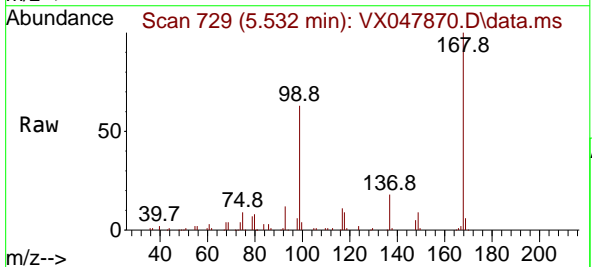
Instrument : MSVOA_X
 ClientSampleId : VX0929WBL01

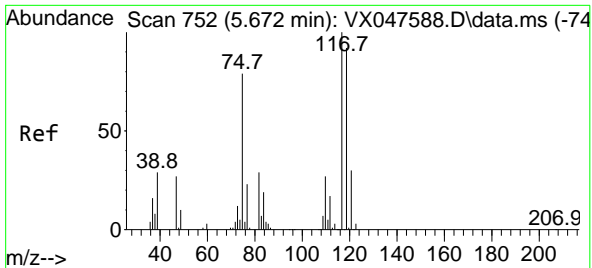
Tgt Ion	Resp	Lower	Upper
113	100		
111	103.8	80.9	121.3
192	18.4	14.2	21.4



#36
 1,1-Dichloropropene
 Concen: 4.226 ug/l
 RT: 5.532 min Scan# 729
 Delta R.T. -0.152 min
 Lab File: VX047870.D
 Acq: 29 Sep 2025 09:48

Tgt Ion	Resp	Lower	Upper
75	100		
110	9.5	16.7	50.1#
77	0.0	24.3	36.5#

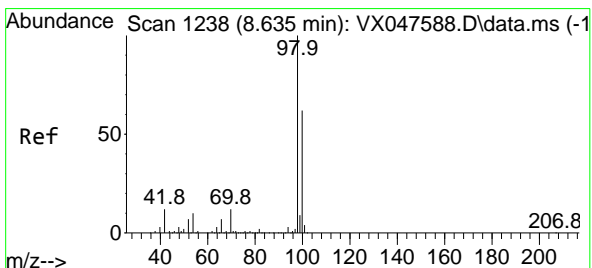
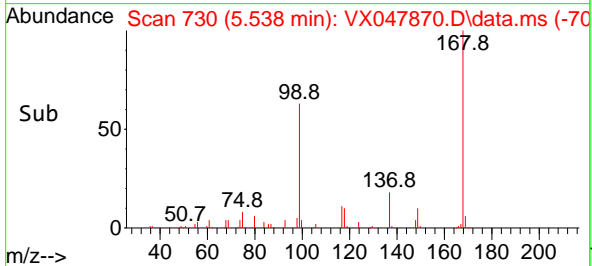
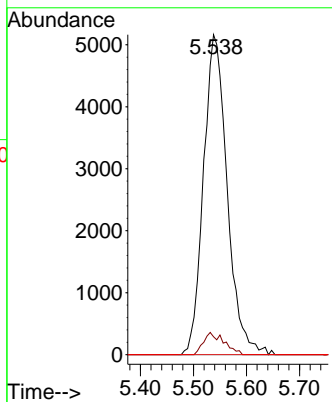
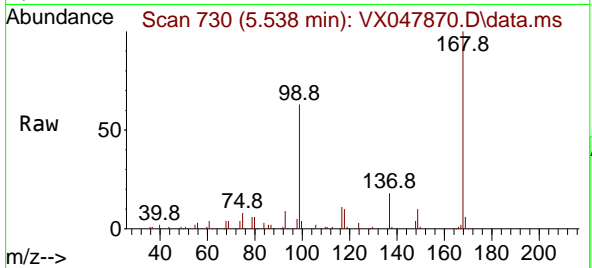




#38
 Carbon Tetrachloride
 Concen: 4.956 ug/l
 RT: 5.538 min Scan# 71
 Delta R.T. -0.134 min
 Lab File: VX047870.D
 Acq: 29 Sep 2025 09:48

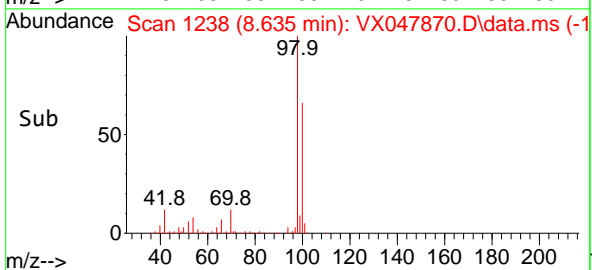
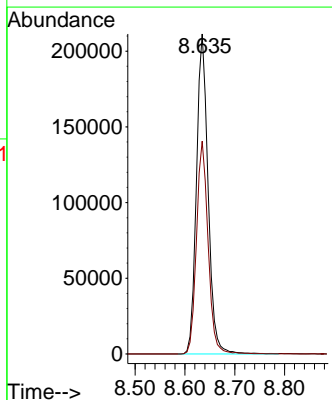
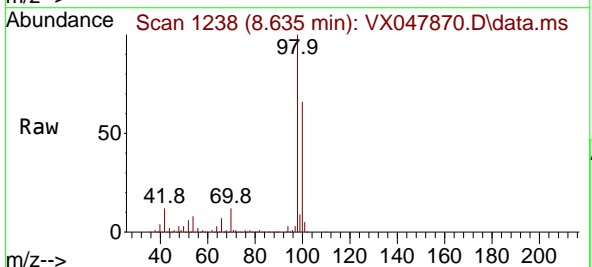
Instrument :
 MSVOA_X
 ClientSampleId :
 VX0929WBL01

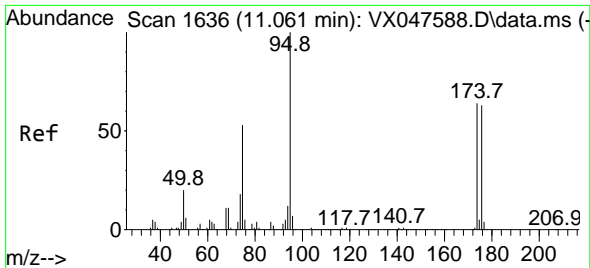
Tgt Ion:117 Resp: 16049
 Ion Ratio Lower Upper
 117 100
 119 5.6 73.4 110.2#
 121 0.0 23.8 35.6#



#50
 Toluene-d8
 Concen: 48.483 ug/l
 RT: 8.635 min Scan# 1238
 Delta R.T. 0.000 min
 Lab File: VX047870.D
 Acq: 29 Sep 2025 09:48

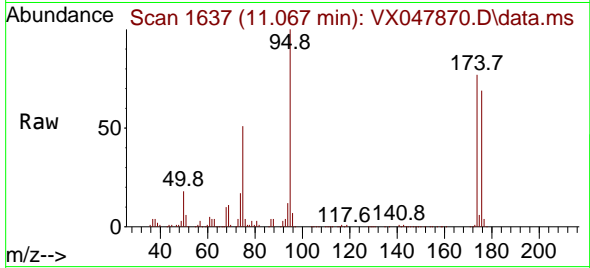
Tgt Ion: 98 Resp: 342151
 Ion Ratio Lower Upper
 98 100
 100 66.5 53.0 79.4



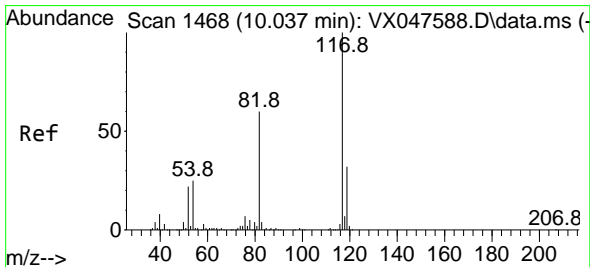
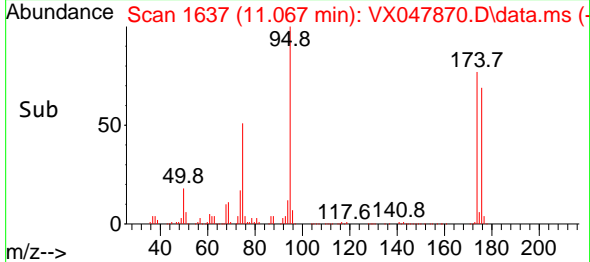
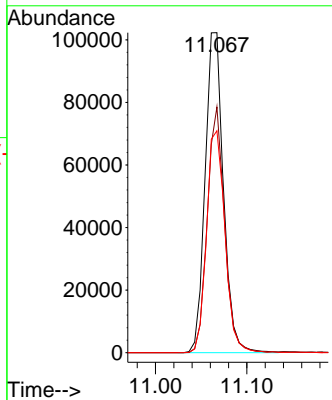


#62
 4-Bromofluorobenzene
 Concen: 53.118 ug/l
 RT: 11.067 min Scan# 1
 Delta R.T. 0.006 min
 Lab File: VX047870.D
 Acq: 29 Sep 2025 09:48

Instrument :
 MSVOA_X
 ClientSampleId :
 VX0929W/BL01

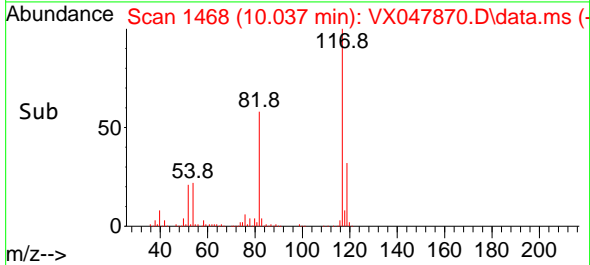
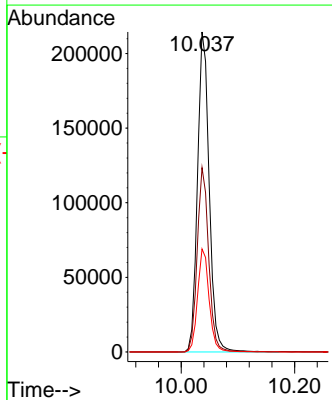
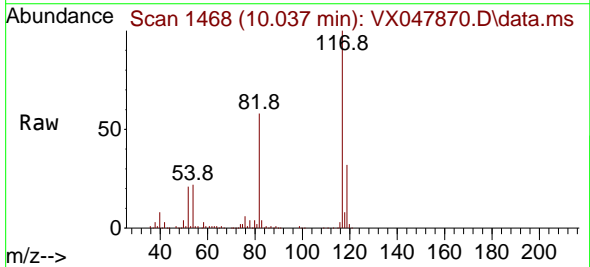


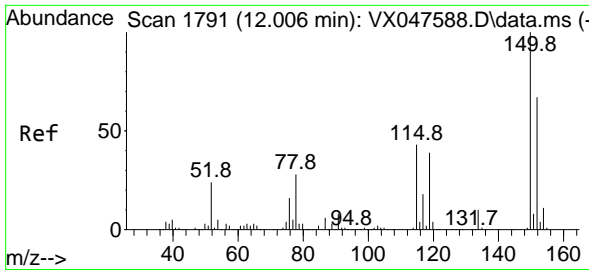
Tgt Ion: 95 Resp: 142267
 Ion Ratio Lower Upper
 95 100
 174 72.5 0.0 141.6
 176 69.8 0.0 138.4



#63
 Chlorobenzene-d5
 Concen: 50.000 ug/l
 RT: 10.037 min Scan# 1468
 Delta R.T. 0.000 min
 Lab File: VX047870.D
 Acq: 29 Sep 2025 09:48

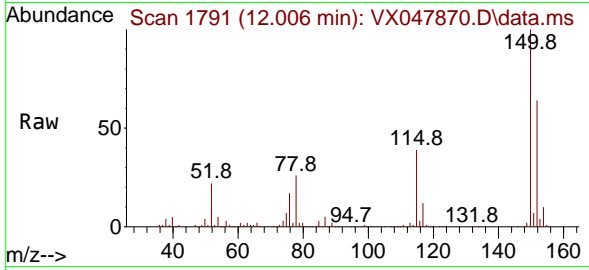
Tgt Ion: 117 Resp: 305847
 Ion Ratio Lower Upper
 117 100
 82 57.6 47.8 71.6
 119 32.2 25.2 37.8



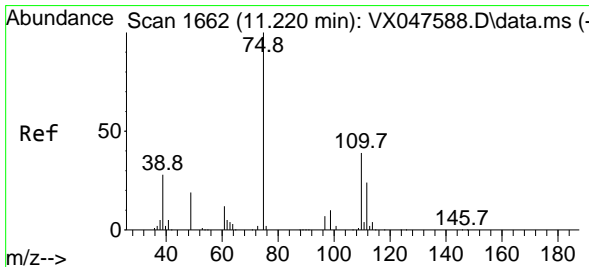
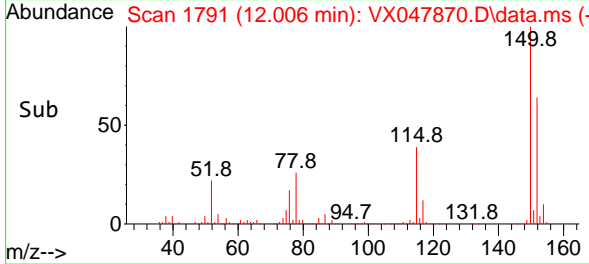
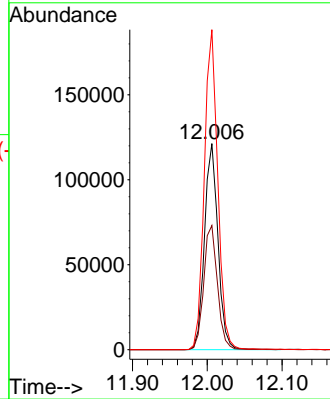


#72
 1,4-Dichlorobenzene-d4
 Concen: 50.000 ug/l
 RT: 12.006 min Scan# 1
 Delta R.T. 0.000 min
 Lab File: VX047870.D
 Acq: 29 Sep 2025 09:48

Instrument :
 MSVOA_X
 ClientSampleId :
 VX0929WBL01

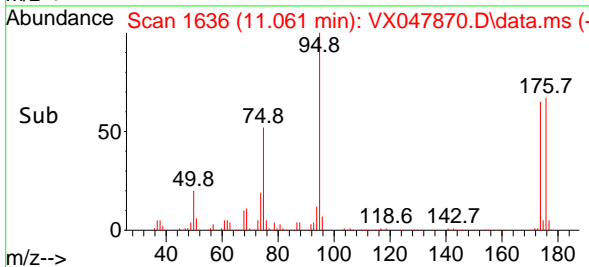
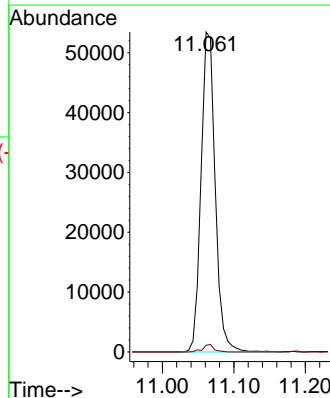
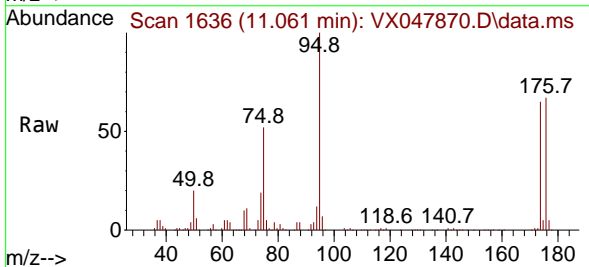


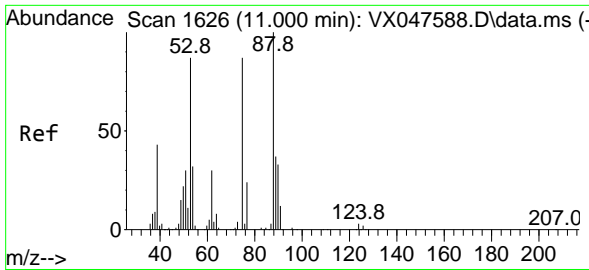
Tgt Ion:152 Resp: 151711
 Ion Ratio Lower Upper
 152 100
 115 61.5 44.9 134.5
 150 154.9 0.0 352.0



#76
 1,2,3-Trichloropropane
 Concen: 23.961 ug/l
 RT: 11.061 min Scan# 1636
 Delta R.T. -0.159 min
 Lab File: VX047870.D
 Acq: 29 Sep 2025 09:48

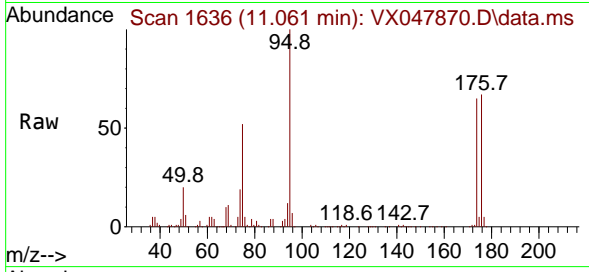
Tgt Ion: 75 Resp: 73599
 Ion Ratio Lower Upper
 75 100
 77 1.9 18.8 56.4#



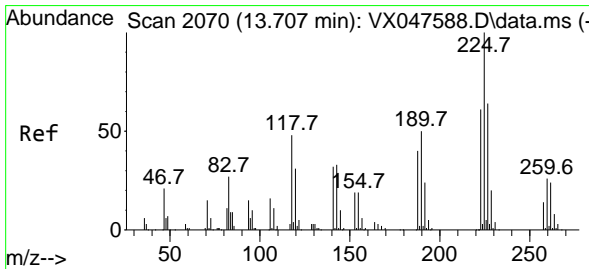
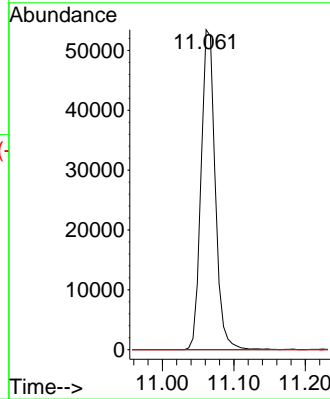
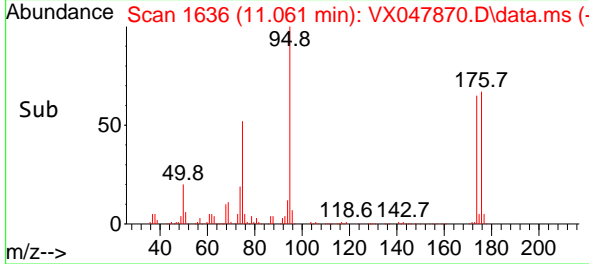


#81
 trans-1,4-Dichloro-2-butene
 Concen: 61.103 ug/l
 RT: 11.061 min Scan# 1
 Delta R.T. 0.061 min
 Lab File: VX047870.D
 Acq: 29 Sep 2025 09:48

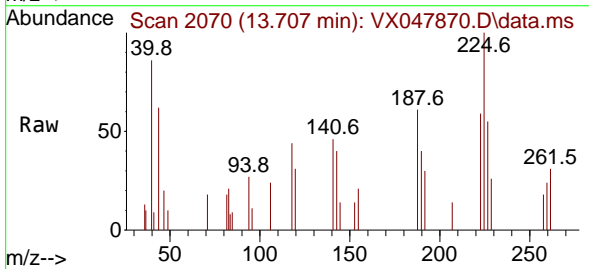
Instrument :
 MSVOA_X
 ClientSampleId :
 VX0929WBL01



Tgt Ion: 75 Resp: 73599
 Ion Ratio Lower Upper
 75 100
 53 0.0 83.4 125.2#
 89 0.0 36.3 54.5#



#94
 Hexachlorobutadiene
 Concen: 0.631 ug/l
 RT: 13.707 min Scan# 2070
 Delta R.T. 0.000 min
 Lab File: VX047870.D
 Acq: 29 Sep 2025 09:48



Tgt Ion: 225 Resp: 700
 Ion Ratio Lower Upper
 225 100
 223 62.1 31.7 95.1
 227 63.0 32.0 96.0

