

Data Path : Z:\voasrv\HPCHEM1\MSVOA_X\Data\VX092925\
 Data File : VX047872.D
 Acq On : 29 Sep 2025 11:05
 Operator : JC/MD
 Sample : Q3156-16
 Misc : 5.0mL/MSVOA_X/WATER
 ALS Vial : 6 Sample Multiplier: 1

Instrument :
 MSVOA_X
 ClientSampleId :
 RW9-MW01D1-20250919

Quant Time: Sep 30 01:16:24 2025
 Quant Method : Z:\voasrv\HPCHEM1\MSVOA_X\Method\82X091625W.M
 Quant Title : SW846 8260
 QLast Update : Wed Sep 17 06:39:58 2025
 Response via : Initial Calibration

Compound	R.T.	QIon	Response	Conc	Units	Dev(Min)

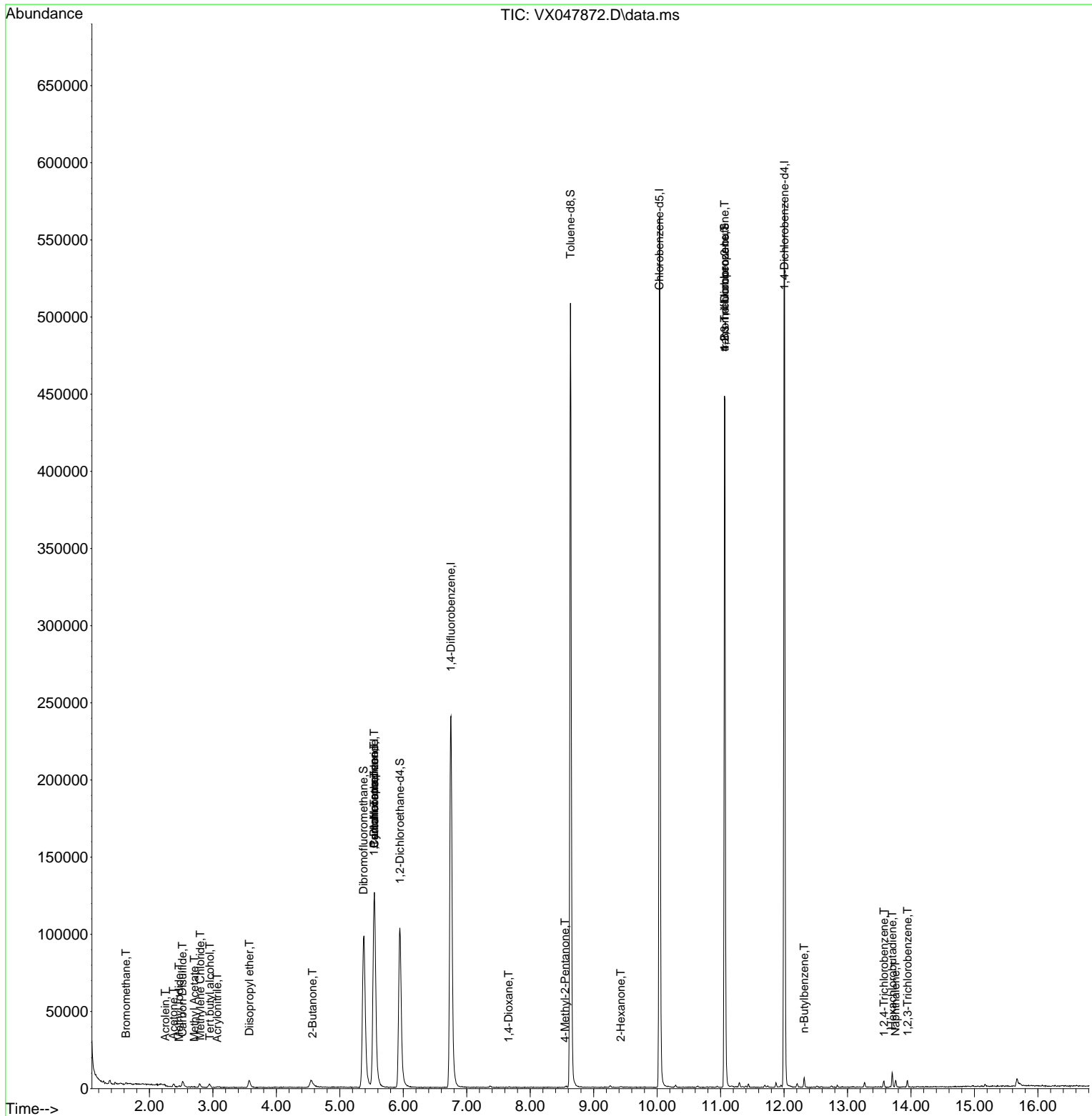
Internal Standards						
1) Pentafluorobenzene	5.544	168	128268	50.000	ug/l	0.00
34) 1,4-Difluorobenzene	6.751	114	266783	50.000	ug/l	0.00
63) Chlorobenzene-d5	10.037	117	263857	50.000	ug/l	0.00
72) 1,4-Dichlorobenzene-d4	12.006	152	123079	50.000	ug/l	0.00
System Monitoring Compounds						
33) 1,2-Dichloroethane-d4	5.946	65	111615	54.668	ug/l	0.00
Spiked Amount	50.000	Range 78 - 117	Recovery	=	109.340%	
35) Dibromofluoromethane	5.373	113	96290	53.818	ug/l	0.00
Spiked Amount	50.000	Range 75 - 124	Recovery	=	107.640%	
50) Toluene-d8	8.635	98	310787	50.200	ug/l	0.00
Spiked Amount	50.000	Range 92 - 112	Recovery	=	100.400%	
62) 4-Bromofluorobenzene	11.061	95	129818	55.252	ug/l	0.00
Spiked Amount	50.000	Range 83 - 123	Recovery	=	110.500%	
Target Compounds						
						Qvalue
5) Bromomethane	1.630	94	559	0.516	ug/l #	62
10) Methyl Iodide	2.465	142	837	0.362	ug/l #	82
11) Tert butyl alcohol	2.953	59	1192	5.242	ug/l #	72
13) Acrolein	2.252	56	86	0.410	ug/l	98
15) Acrylonitrile	3.069	53	332	0.394	ug/l #	69
16) Acetone	2.380	43	2390	2.692	ug/l #	75
17) Carbon Disulfide	2.520	76	1485	0.356	ug/l	99
18) Methyl Acetate	2.709	43	553	0.280	ug/l #	54
20) Methylene Chloride	2.800	84	1070	0.569	ug/l #	84
22) Diisopropyl ether	3.575	45	2673	0.439	ug/l #	1
25) 2-Butanone	4.568	43	498	0.450	ug/l #	50
31) Cyclohexane	5.544	56	2980	1.105	ug/l #	25
36) 1,1-Dichloropropene	5.538	75	10914	4.175	ug/l #	51
38) Carbon Tetrachloride	5.544	117	13465	4.740	ug/l #	20
49) 1,4-Dioxane	7.659	88	184	7.962	ug/l #	75
51) 4-Methyl-2-Pentanone	8.549	43	618	0.243	ug/l #	68
59) 2-Hexanone	9.427	43	433	0.237	ug/l	81
76) 1,2,3-Trichloropropane	11.061	75	66370	26.634	ug/l #	40
81) trans-1,4-Dichloro-2-b...	11.061	75	66370	67.919	ug/l #	8
89) n-Butylbenzene	12.317	91	2566	0.350	ug/l	97
93) 1,2,4-Trichlorobenzene	13.573	180	1274	0.481	ug/l	96
94) Hexachlorobutadiene	13.707	225	1174	1.304	ug/l	85
95) Naphthalene	13.756	128	3216	0.398	ug/l #	96
96) 1,2,3-Trichlorobenzene	13.945	180	1159	0.470	ug/l	93

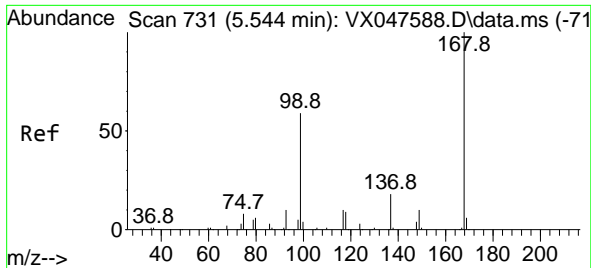
(#) = qualifier out of range (m) = manual integration (+) = signals summed

Data Path : Z:\voasrv\HPCHEM1\MSVOA_X\Data\VX092925\
 Data File : VX047872.D
 Acq On : 29 Sep 2025 11:05
 Operator : JC/MD
 Sample : Q3156-16
 Misc : 5.0mL/MSVOA_X/WATER
 ALS Vial : 6 Sample Multiplier: 1

Instrument :
 MSVOA_X
 ClientSampleId :
 RW9-MW01D1-20250919

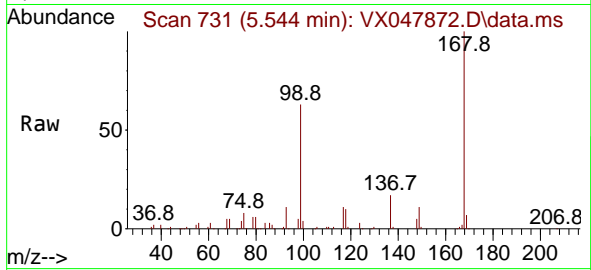
Quant Time: Sep 30 01:16:24 2025
 Quant Method : Z:\voasrv\HPCHEM1\MSVOA_X\Method\82X091625W.M
 Quant Title : SW846 8260
 QLast Update : Wed Sep 17 06:39:58 2025
 Response via : Initial Calibration



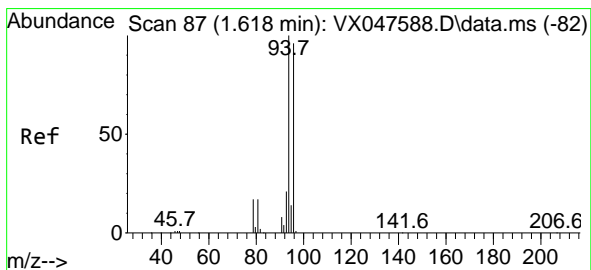
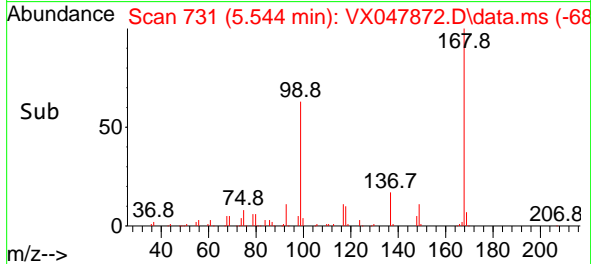
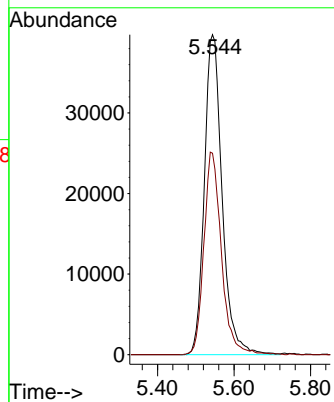


#1
 Pentafluorobenzene
 Concen: 50.000 ug/l
 RT: 5.544 min Scan# 71
 Delta R.T. -0.000 min
 Lab File: VX047872.D
 Acq: 29 Sep 2025 11:05

Instrument : MSVOA_X
 ClientSampleId : RW9-MW01D1-20250919

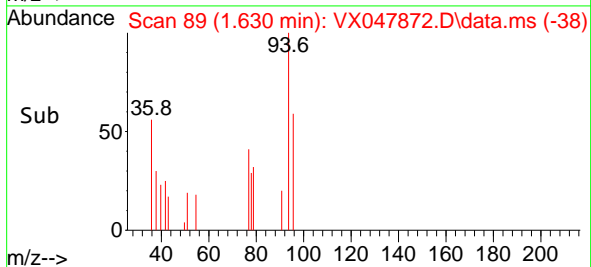
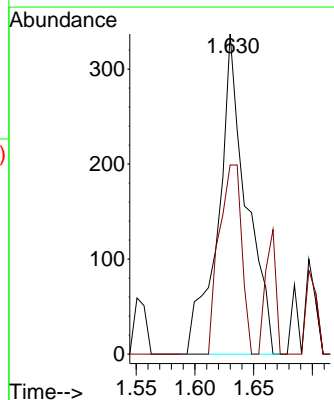
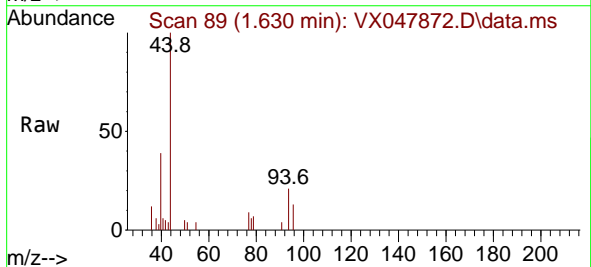


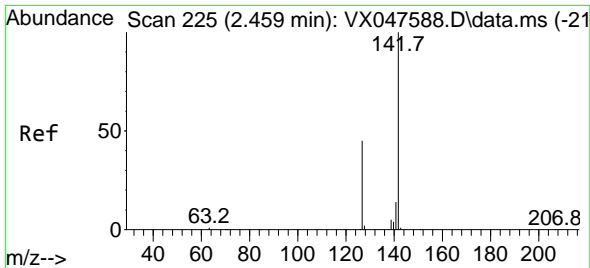
Tgt Ion:168 Resp: 128268
 Ion Ratio Lower Upper
 168 100
 99 63.0 48.8 73.2



#5
 Bromomethane
 Concen: 0.516 ug/l
 RT: 1.630 min Scan# 89
 Delta R.T. 0.012 min
 Lab File: VX047872.D
 Acq: 29 Sep 2025 11:05

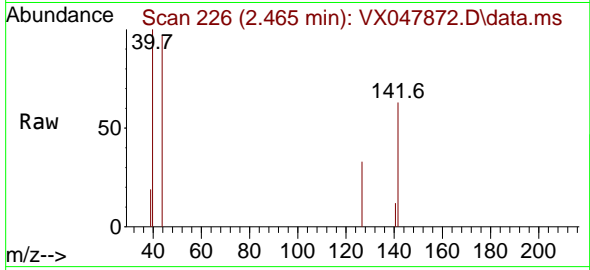
Tgt Ion: 94 Resp: 559
 Ion Ratio Lower Upper
 94 100
 96 59.1 76.6 115.0#



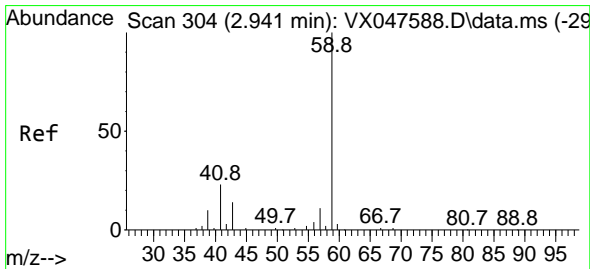
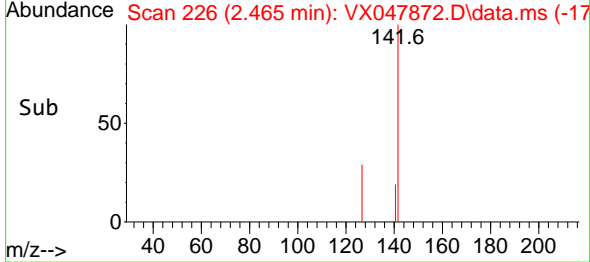
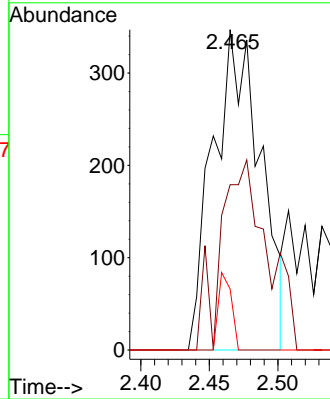


#10
Methyl Iodide
Concen: 0.362 ug/l
RT: 2.465 min Scan# 21
Delta R.T. 0.006 min
Lab File: VX047872.D
Acq: 29 Sep 2025 11:05

Instrument : MSVOA_X
ClientSampleId : RW9-MW01D1-20250919

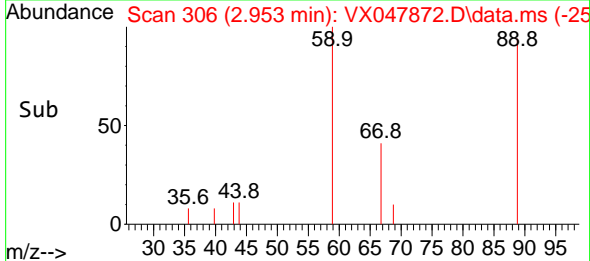
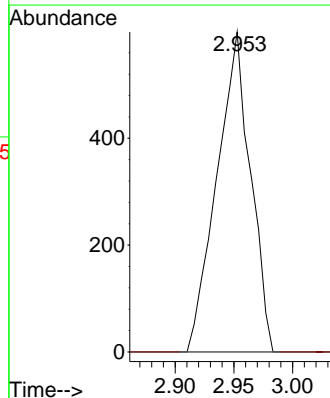
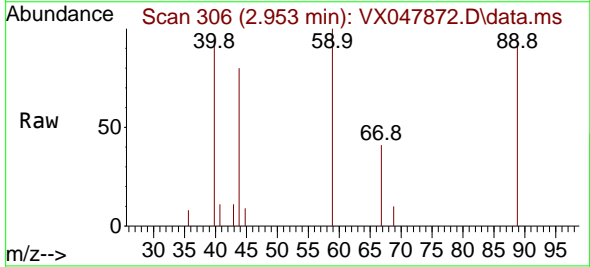


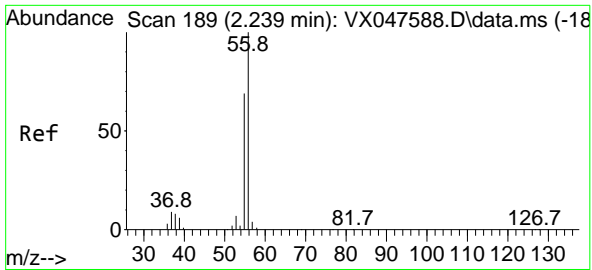
Tgt Ion:142 Resp: 837
Ion Ratio Lower Upper
142 100
127 58.5 37.2 55.8#
141 6.6 11.4 17.0#



#11
Tert butyl alcohol
Concen: 5.242 ug/l
RT: 2.953 min Scan# 306
Delta R.T. 0.012 min
Lab File: VX047872.D
Acq: 29 Sep 2025 11:05

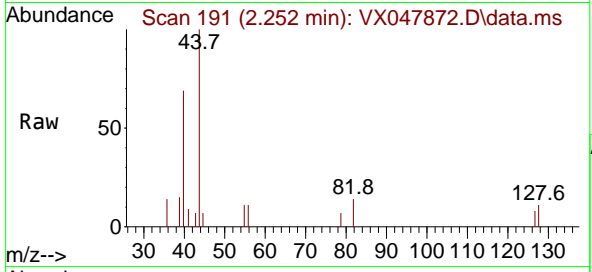
Tgt Ion: 59 Resp: 1192
Ion Ratio Lower Upper
59 100
57 0.0 8.3 12.5#



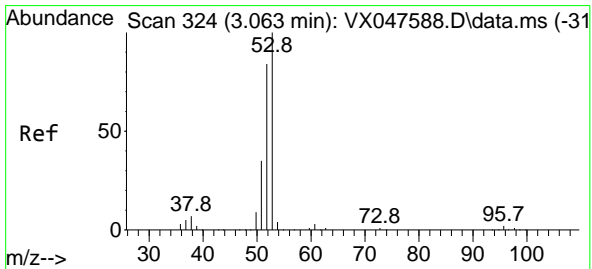
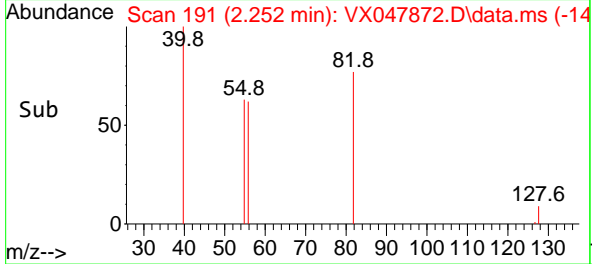
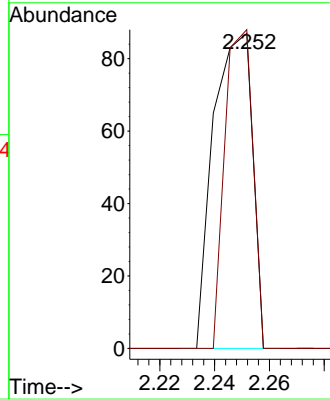


#13
 Acrolein
 Concen: 0.410 ug/l
 RT: 2.252 min Scan# 14
 Delta R.T. 0.012 min
 Lab File: VX047872.D
 Acq: 29 Sep 2025 11:05

Instrument : MSVOA_X
 ClientSampleId : RW9-MW01D1-20250919

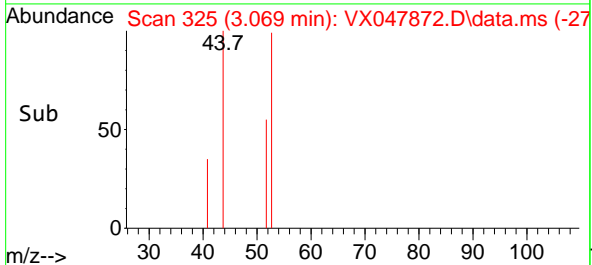
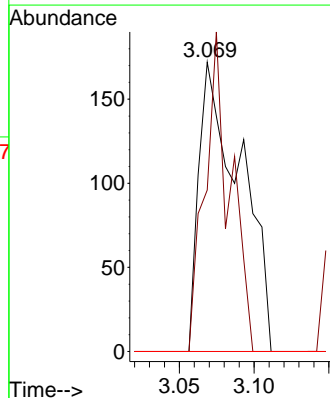
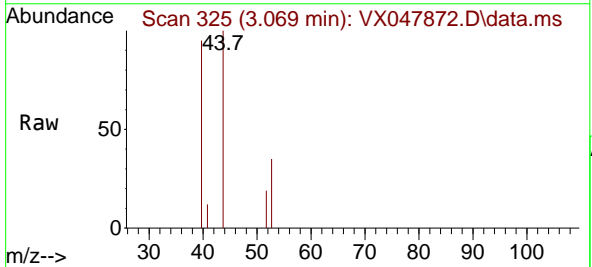


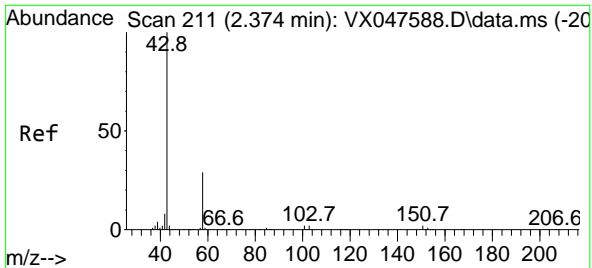
Tgt Ion: 56 Resp: 86
 Ion Ratio Lower Upper
 56 100
 55 73.3 57.2 85.8



#15
 Acrylonitrile
 Concen: 0.394 ug/l
 RT: 3.069 min Scan# 325
 Delta R.T. 0.006 min
 Lab File: VX047872.D
 Acq: 29 Sep 2025 11:05

Tgt Ion: 53 Resp: 332
 Ion Ratio Lower Upper
 53 100
 52 67.5 66.4 99.6
 51 0.0 29.5 44.3#

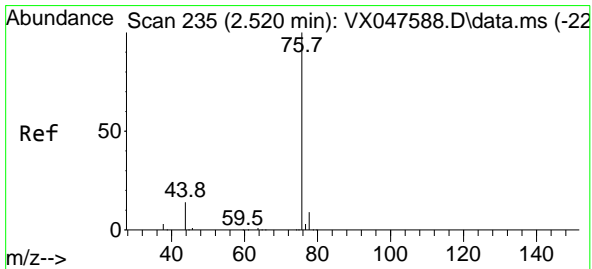
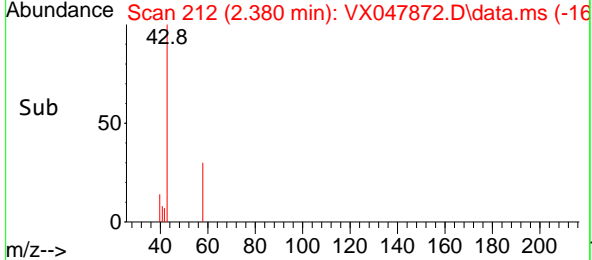
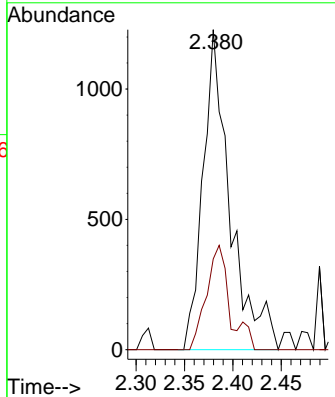
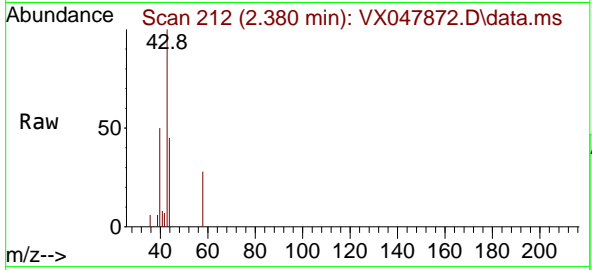




#16
 Acetone
 Concen: 2.692 ug/l
 RT: 2.380 min Scan# 211
 Delta R.T. 0.006 min
 Lab File: VX047872.D
 Acq: 29 Sep 2025 11:05

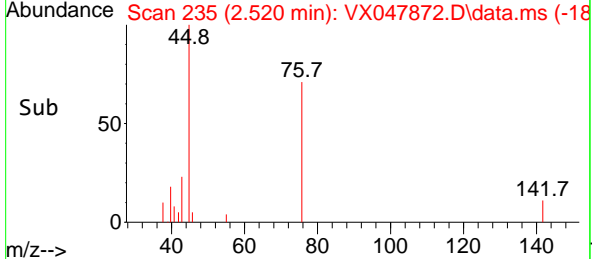
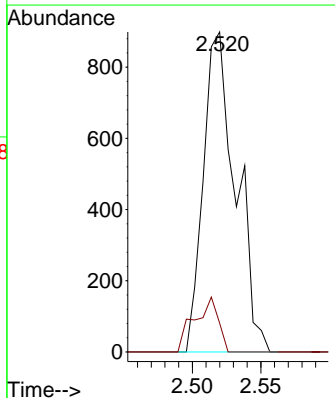
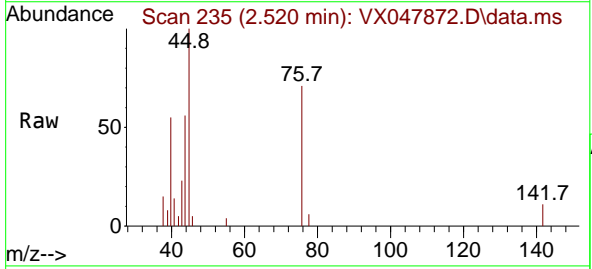
Instrument : MSVOA_X
 ClientSampleId : RW9-MW01D1-20250919

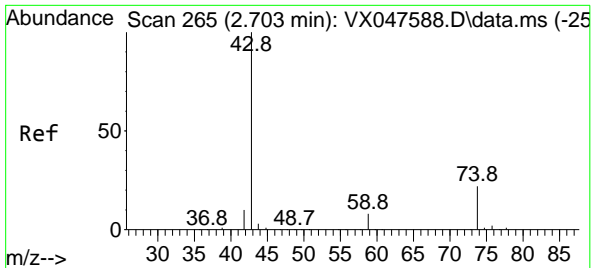
Tgt Ion: 43 Resp: 2390
 Ion Ratio Lower Upper
 43 100
 58 42.8 23.4 35.0#



#17
 Carbon Disulfide
 Concen: 0.356 ug/l
 RT: 2.520 min Scan# 235
 Delta R.T. 0.000 min
 Lab File: VX047872.D
 Acq: 29 Sep 2025 11:05

Tgt Ion: 76 Resp: 1485
 Ion Ratio Lower Upper
 76 100
 78 9.0 6.8 10.2

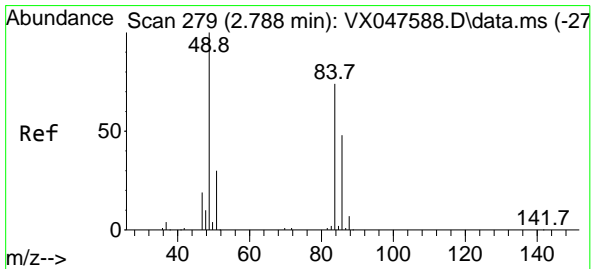
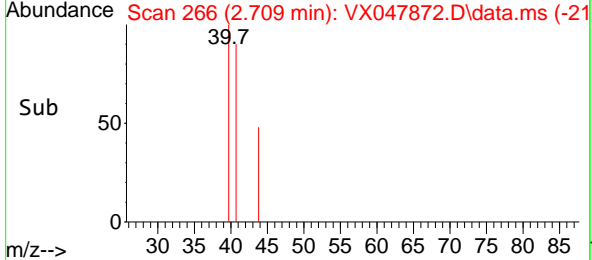
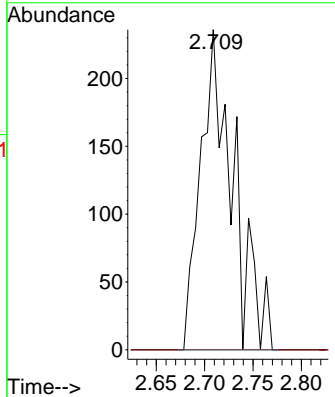
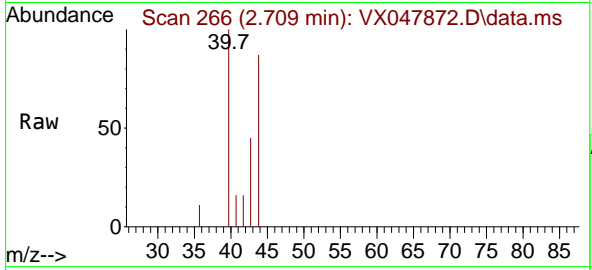




#18
 Methyl Acetate
 Concen: 0.280 ug/l
 RT: 2.709 min Scan# 20
 Delta R.T. 0.006 min
 Lab File: VX047872.D
 Acq: 29 Sep 2025 11:05

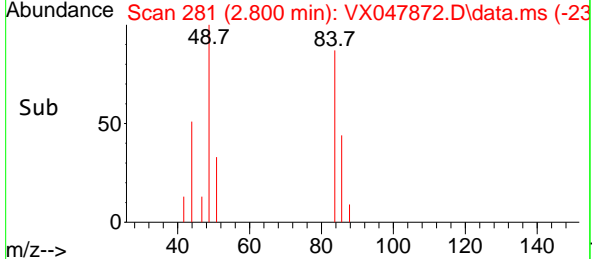
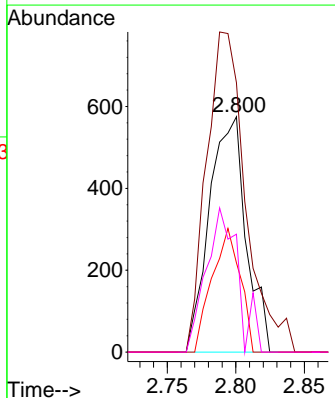
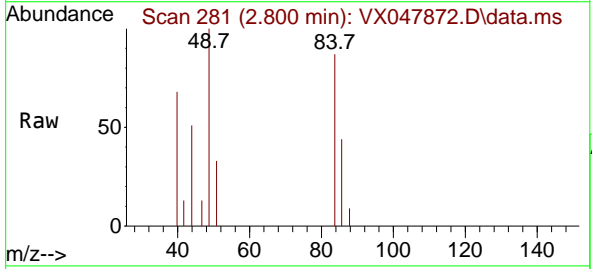
Instrument : MSVOA_X
 ClientSampleId : RW9-MW01D1-20250919

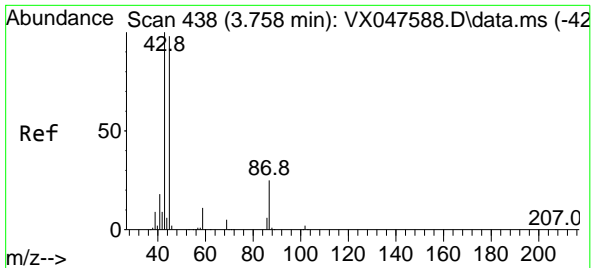
Tgt Ion: 43 Resp: 553
 Ion Ratio Lower Upper
 43 100
 74 0.0 17.4 26.2#



#20
 Methylene Chloride
 Concen: 0.569 ug/l
 RT: 2.800 min Scan# 281
 Delta R.T. 0.012 min
 Lab File: VX047872.D
 Acq: 29 Sep 2025 11:05

Tgt Ion: 84 Resp: 1070
 Ion Ratio Lower Upper
 84 100
 49 114.4 108.6 162.8
 51 37.9 32.6 48.8
 86 50.1 52.0 78.0#



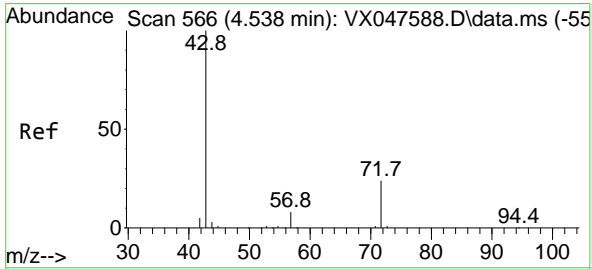
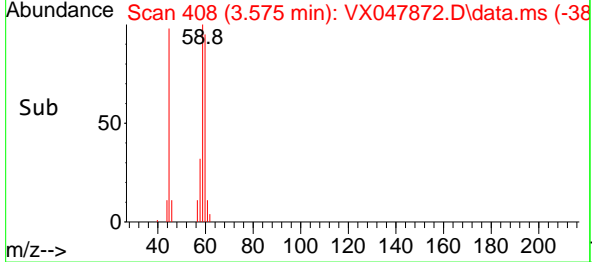
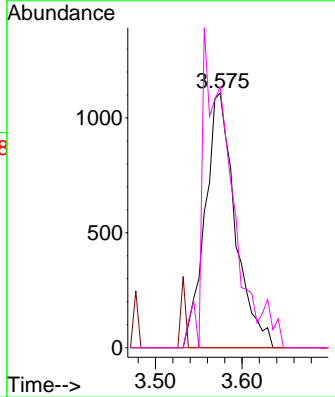
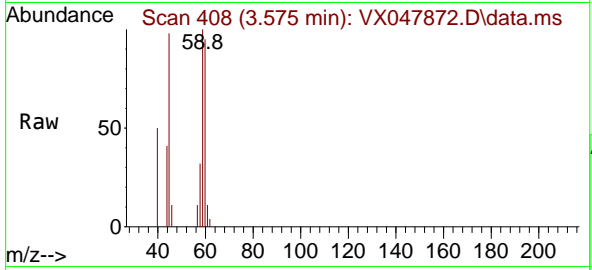


#22
 Diisopropyl ether
 Concen: 0.439 ug/l
 RT: 3.575 min Scan# 408
 Delta R.T. -0.183 min
 Lab File: VX047872.D
 Acq: 29 Sep 2025 11:05

Instrument : MSVOA_X
 ClientSampleId : RW9-MW01D1-20250919

Tgt Ion: 45 Resp: 2673

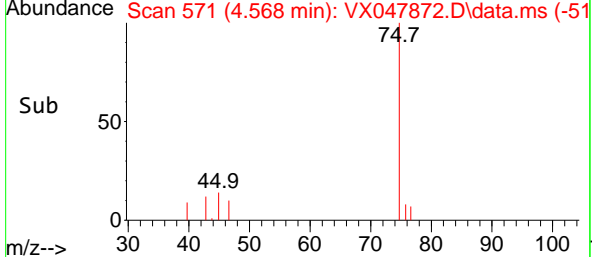
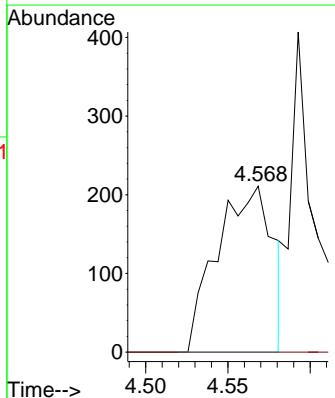
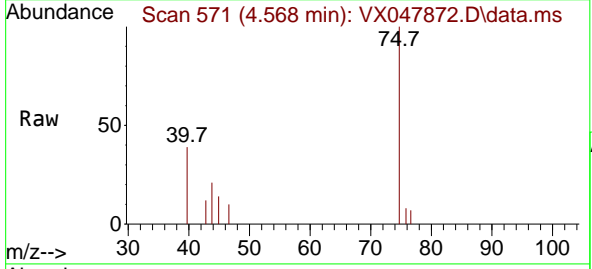
Ion	Ratio	Lower	Upper
45	100		
43	0.0	81.0	121.4#
87	0.0	20.3	30.5#
59	102.3	9.0	13.4#

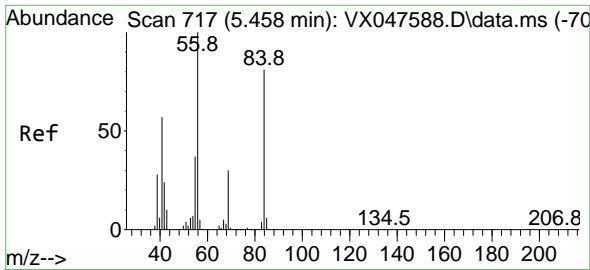


#25
 2-Butanone
 Concen: 0.450 ug/l
 RT: 4.568 min Scan# 571
 Delta R.T. 0.030 min
 Lab File: VX047872.D
 Acq: 29 Sep 2025 11:05

Tgt Ion: 43 Resp: 498

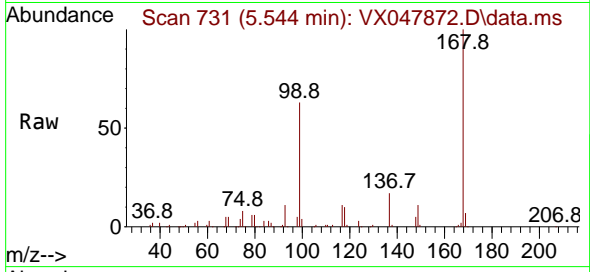
Ion	Ratio	Lower	Upper
43	100		
72	0.0	20.1	30.1#





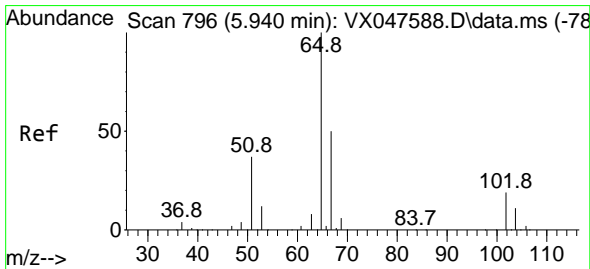
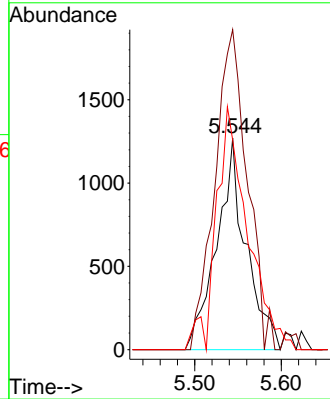
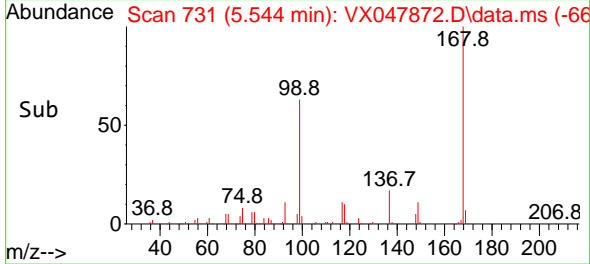
#31
 Cyclohexane
 Concen: 1.105 ug/l
 RT: 5.544 min Scan# 717
 Delta R.T. 0.085 min
 Lab File: VX047872.D
 Acq: 29 Sep 2025 11:05

Instrument : MSVOA_X
 ClientSampleId : RW9-MW01D1-20250919

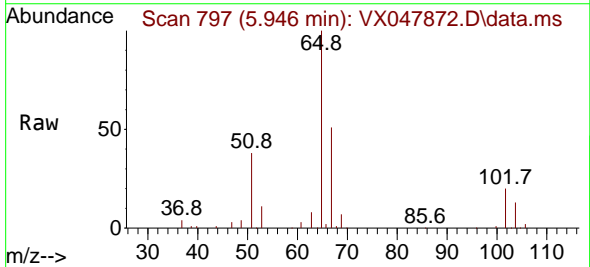


Tgt Ion: 56 Resp: 2980

Ion	Ratio	Lower	Upper
56	100		
69	151.1	23.8	35.8#
84	99.0	64.6	97.0#

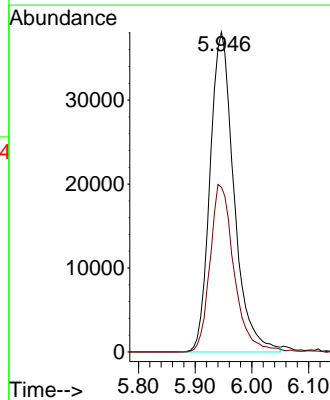
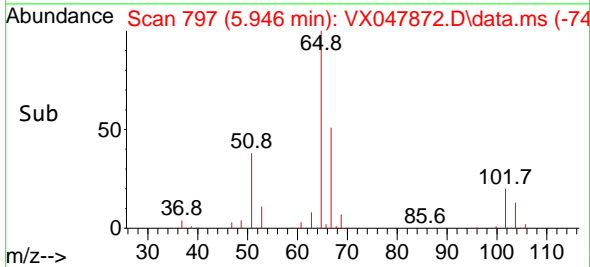


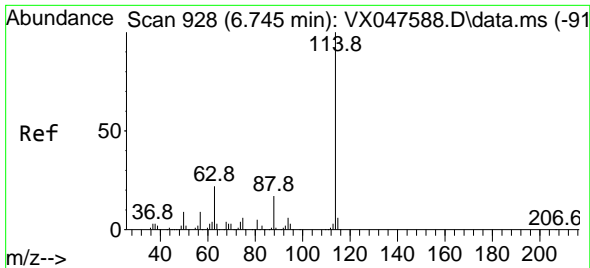
#33
 1,2-Dichloroethane-d4
 Concen: 54.668 ug/l
 RT: 5.946 min Scan# 797
 Delta R.T. 0.006 min
 Lab File: VX047872.D
 Acq: 29 Sep 2025 11:05



Tgt Ion: 65 Resp: 111615

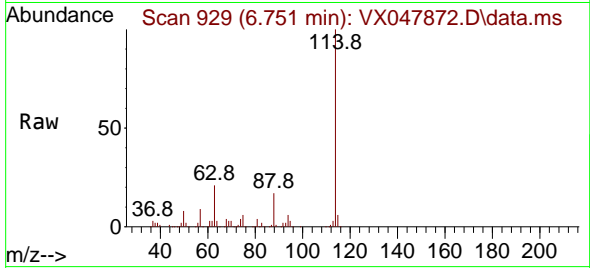
Ion	Ratio	Lower	Upper
65	100		
67	52.7	0.0	103.0



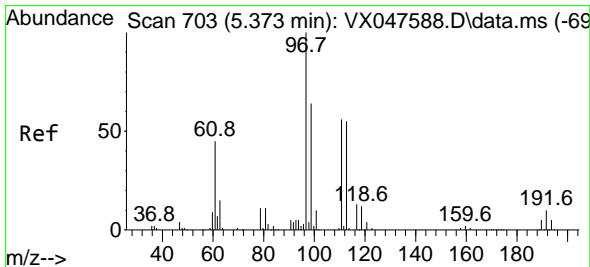
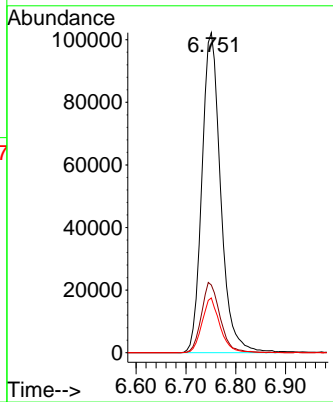
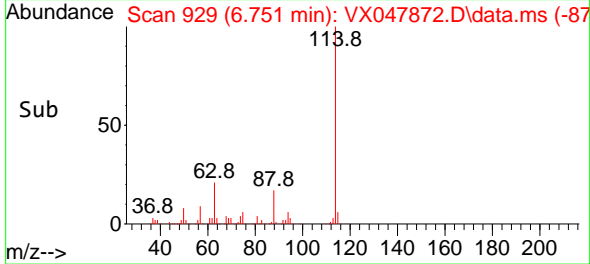


#34
 1,4-Difluorobenzene
 Concen: 50.000 ug/l
 RT: 6.751 min Scan# 91
 Delta R.T. 0.006 min
 Lab File: VX047872.D
 Acq: 29 Sep 2025 11:05

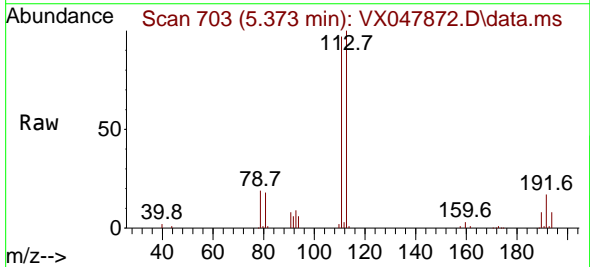
Instrument : MSVOA_X
 ClientSampleId : RW9-MW01D1-20250919



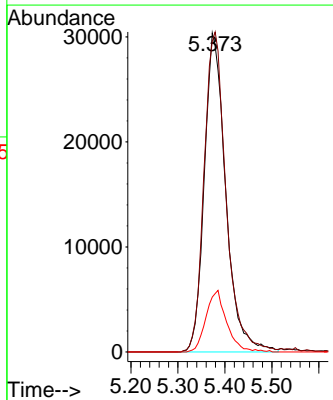
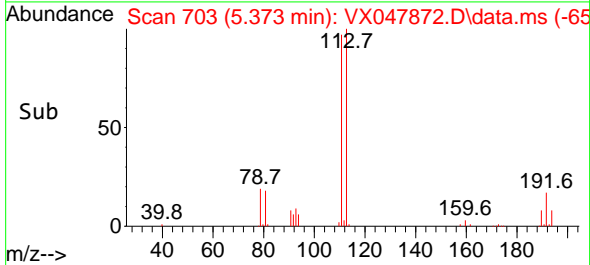
Tgt Ion:114 Resp: 266783
 Ion Ratio Lower Upper
 114 100
 63 21.2 0.0 44.0
 88 17.1 0.0 34.2

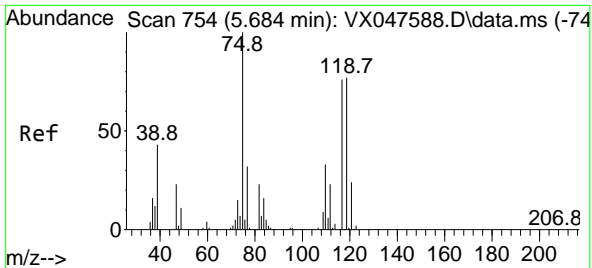


#35
 Dibromofluoromethane
 Concen: 53.818 ug/l
 RT: 5.373 min Scan# 703
 Delta R.T. 0.000 min
 Lab File: VX047872.D
 Acq: 29 Sep 2025 11:05



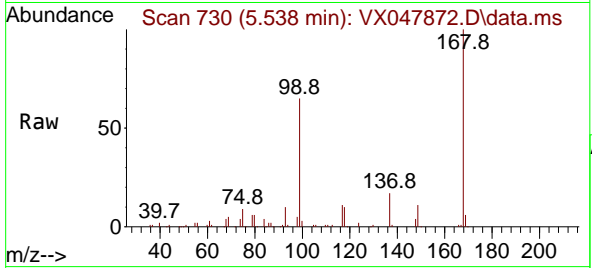
Tgt Ion:113 Resp: 96290
 Ion Ratio Lower Upper
 113 100
 111 102.6 80.9 121.3
 192 18.7 14.2 21.4





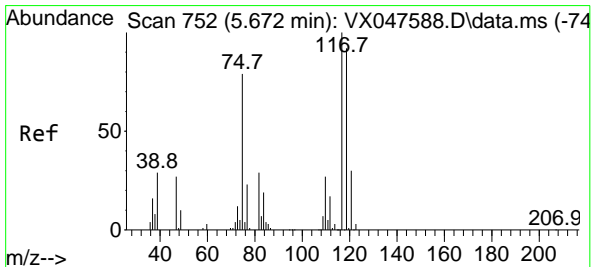
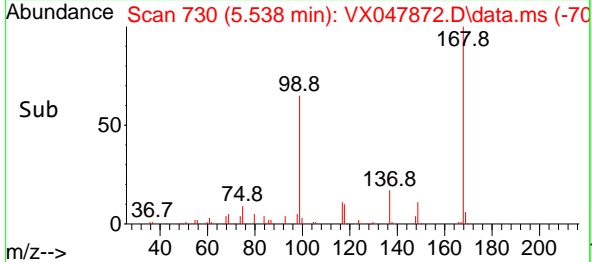
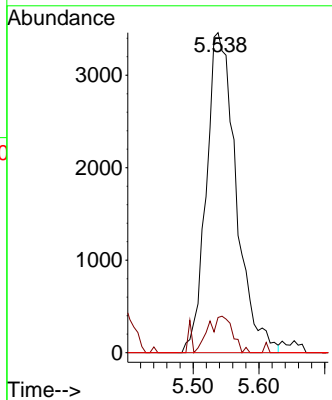
#36
 1,1-Dichloropropene
 Concen: 4.175 ug/l
 RT: 5.538 min Scan# 711
 Delta R.T. -0.146 min
 Lab File: VX047872.D
 Acq: 29 Sep 2025 11:05

Instrument : MSVOA_X
 ClientSampleId : RW9-MW01D1-20250919

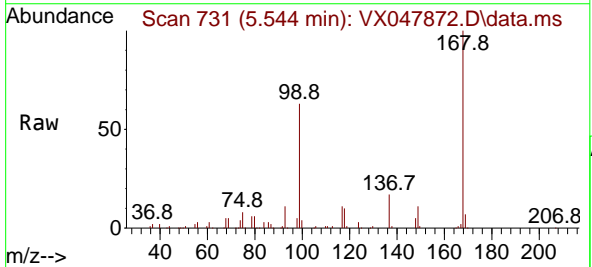


Tgt Ion: 75 Resp: 10914

Ion	Ratio	Lower	Upper
75	100		
110	9.1	16.7	50.1#
77	0.0	24.3	36.5#

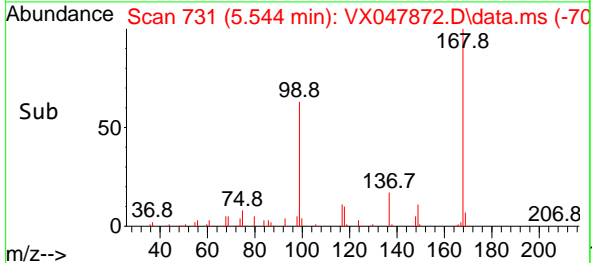
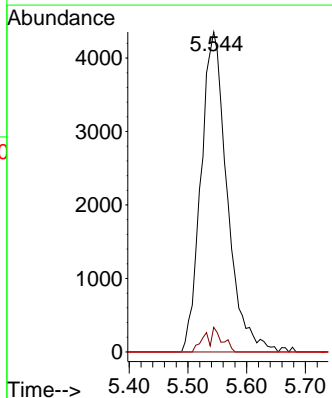


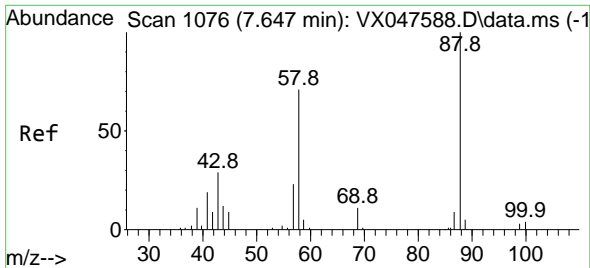
#38
 Carbon Tetrachloride
 Concen: 4.740 ug/l
 RT: 5.544 min Scan# 731
 Delta R.T. -0.128 min
 Lab File: VX047872.D
 Acq: 29 Sep 2025 11:05



Tgt Ion: 117 Resp: 13465

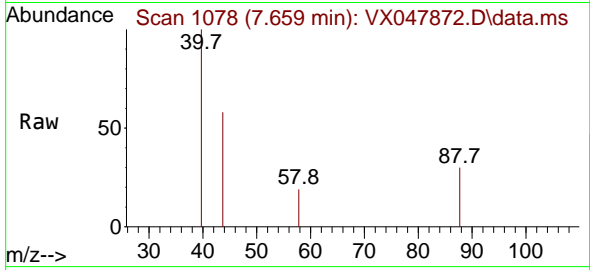
Ion	Ratio	Lower	Upper
117	100		
119	7.7	73.4	110.2#
121	0.0	23.8	35.6#





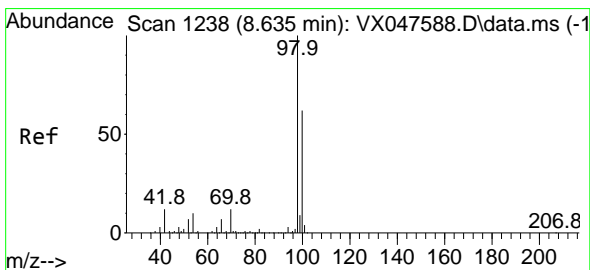
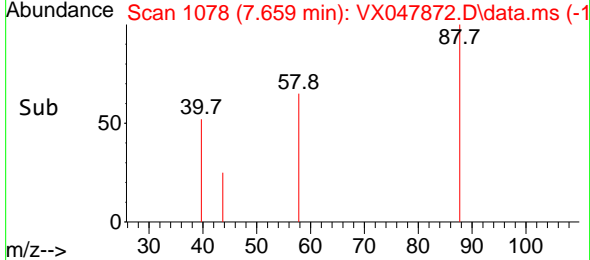
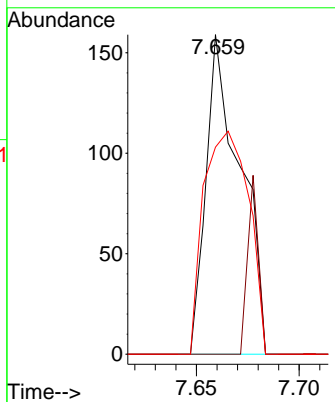
#49
 1,4-Dioxane
 Concen: 7.962 ug/l
 RT: 7.659 min Scan# 1078
 Delta R.T. 0.012 min
 Lab File: VX047872.D
 Acq: 29 Sep 2025 11:05

Instrument : MSVOA_X
 ClientSampleId : RW9-MW01D1-20250919



Tgt Ion: 88 Resp: 184

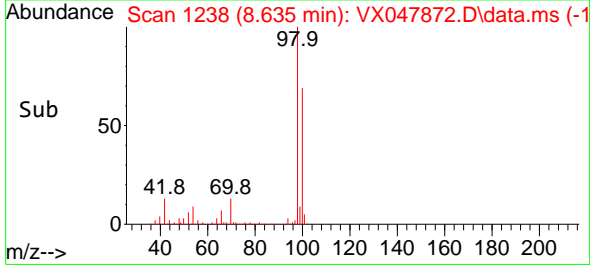
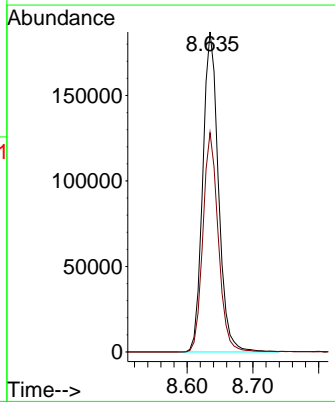
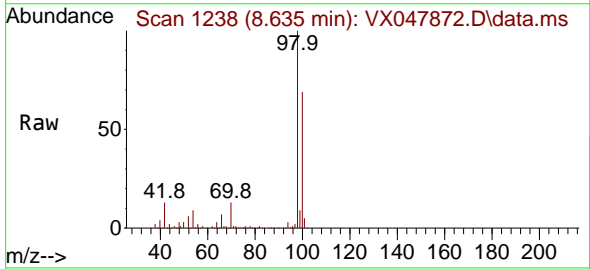
Ion	Ratio	Lower	Upper
88	100		
43	17.9	30.2	45.2#
58	91.8	59.5	89.3#

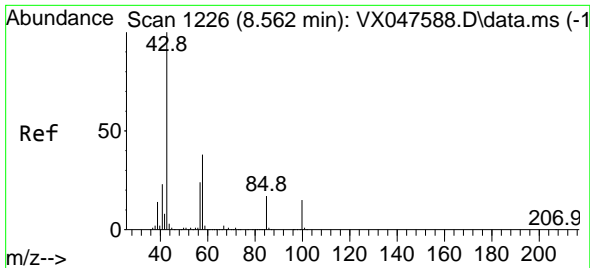


#50
 Toluene-d8
 Concen: 50.200 ug/l
 RT: 8.635 min Scan# 1238
 Delta R.T. 0.000 min
 Lab File: VX047872.D
 Acq: 29 Sep 2025 11:05

Tgt Ion: 98 Resp: 310787

Ion	Ratio	Lower	Upper
98	100		
100	67.0	53.0	79.4

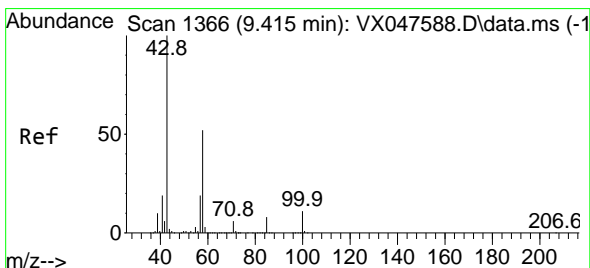
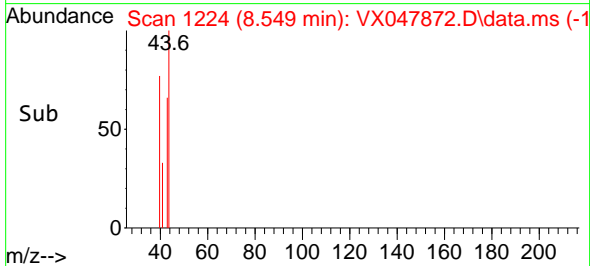
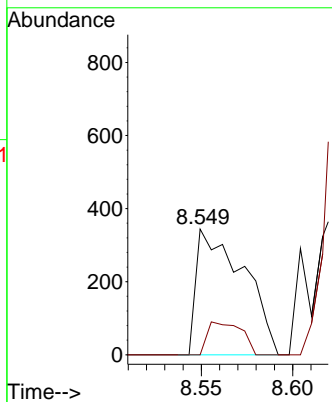
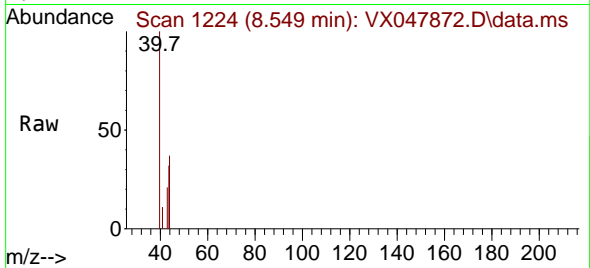




#51
 4-Methyl-2-Pentanone
 Concen: 0.243 ug/l
 RT: 8.549 min Scan# 111
 Delta R.T. -0.012 min
 Lab File: VX047872.D
 Acq: 29 Sep 2025 11:05

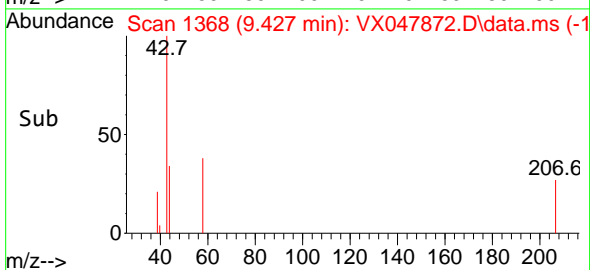
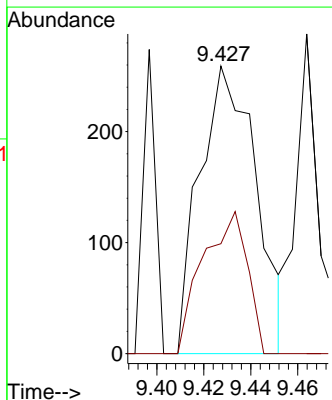
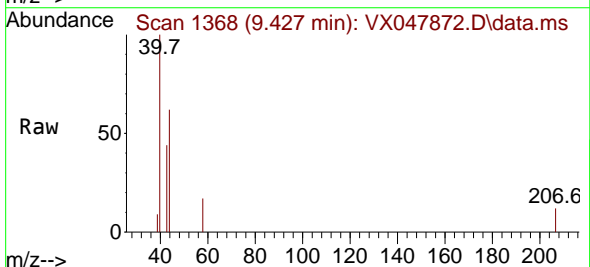
Instrument : MSVOA_X
 ClientSampleId : RW9-MW01D1-20250919

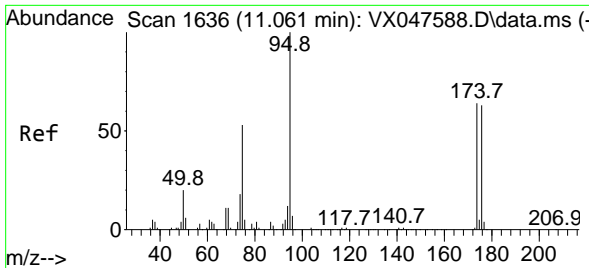
Tgt Ion: 43 Resp: 618
 Ion Ratio Lower Upper
 43 100
 58 18.8 30.3 45.5#



#59
 2-Hexanone
 Concen: 0.237 ug/l
 RT: 9.427 min Scan# 1368
 Delta R.T. 0.012 min
 Lab File: VX047872.D
 Acq: 29 Sep 2025 11:05

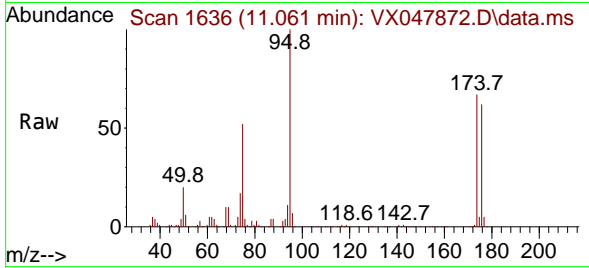
Tgt Ion: 43 Resp: 433
 Ion Ratio Lower Upper
 43 100
 58 39.0 26.1 78.2



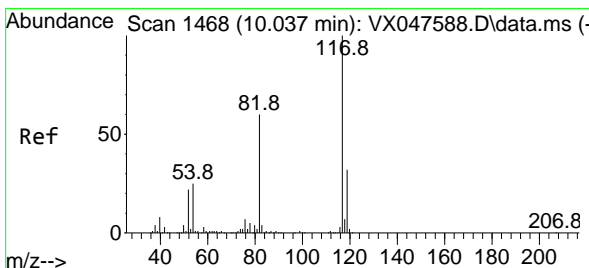
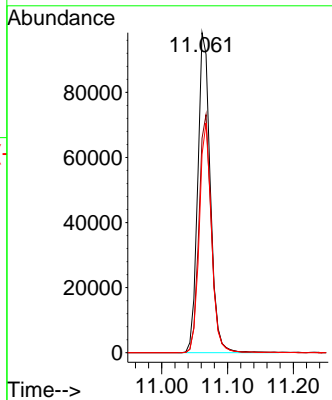
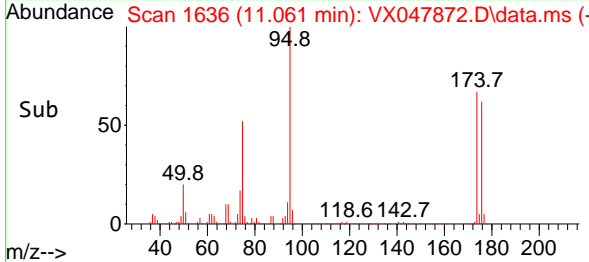


#62
 4-Bromofluorobenzene
 Concen: 55.252 ug/l
 RT: 11.061 min Scan# 11
 Delta R.T. 0.000 min
 Lab File: VX047872.D
 Acq: 29 Sep 2025 11:05

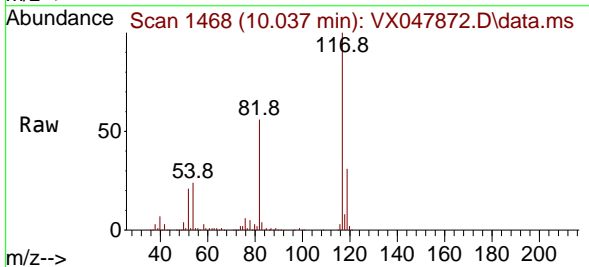
Instrument :
 MSVOA_X
 ClientSampleId :
 RW9-MW01D1-20250919



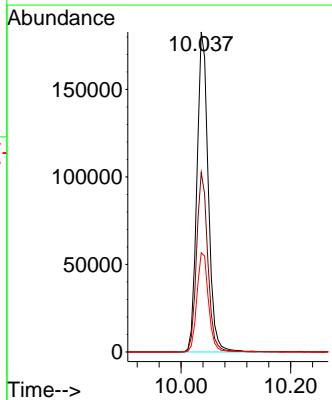
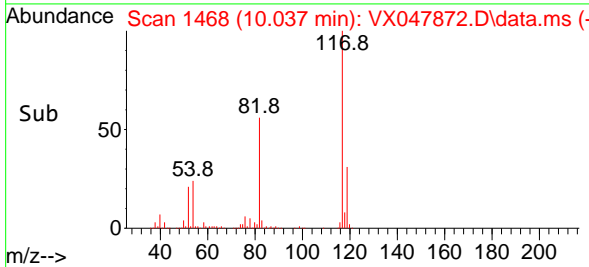
Tgt Ion: 95 Resp: 129818
 Ion Ratio Lower Upper
 95 100
 174 73.7 0.0 141.6
 176 70.2 0.0 138.4

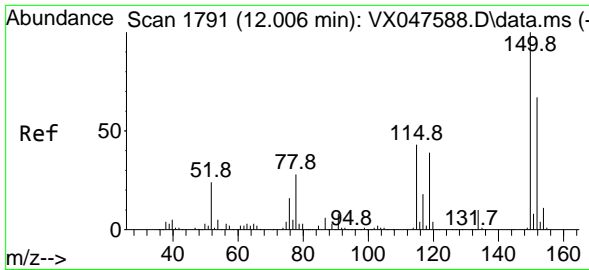


#63
 Chlorobenzene-d5
 Concen: 50.000 ug/l
 RT: 10.037 min Scan# 1468
 Delta R.T. 0.000 min
 Lab File: VX047872.D
 Acq: 29 Sep 2025 11:05



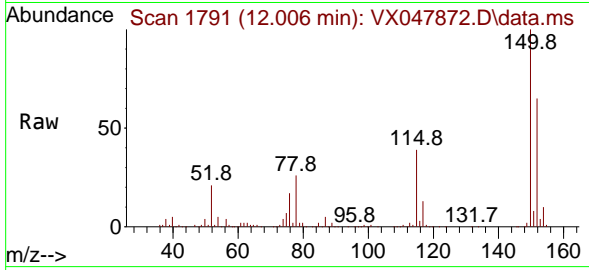
Tgt Ion: 117 Resp: 263857
 Ion Ratio Lower Upper
 117 100
 82 56.1 47.8 71.6
 119 31.0 25.2 37.8



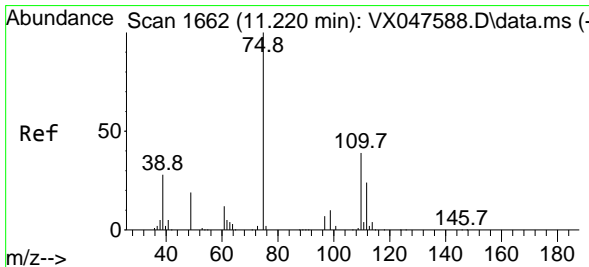
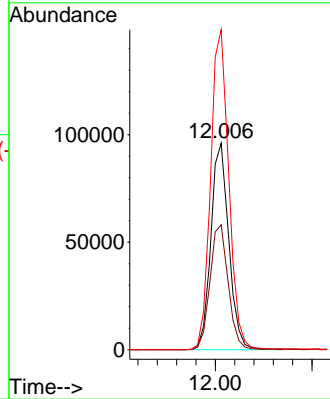
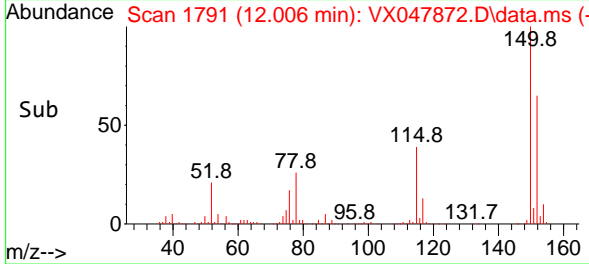


#72
 1,4-Dichlorobenzene-d4
 Concen: 50.000 ug/l
 RT: 12.006 min Scan# 1
 Delta R.T. 0.000 min
 Lab File: VX047872.D
 Acq: 29 Sep 2025 11:05

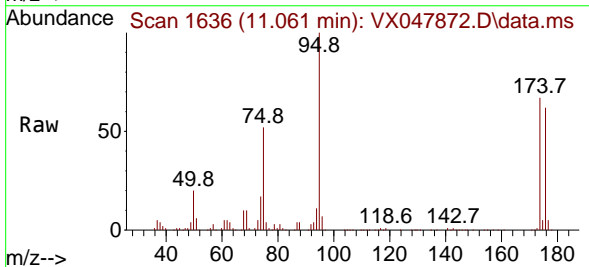
Instrument :
 MSVOA_X
 ClientSampleId :
 RW9-MW01D1-20250919



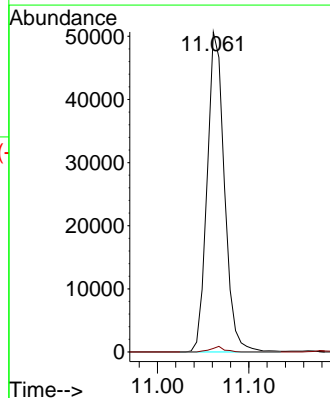
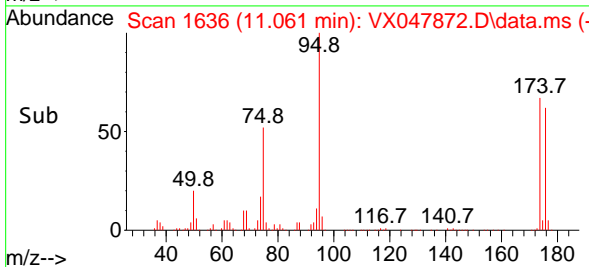
Tgt Ion:152 Resp: 123079
 Ion Ratio Lower Upper
 152 100
 115 61.8 44.9 134.5
 150 157.5 0.0 352.0

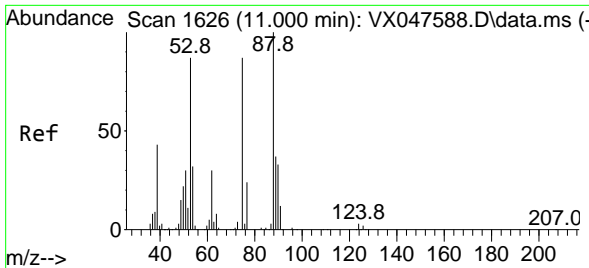


#76
 1,2,3-Trichloropropane
 Concen: 26.634 ug/l
 RT: 11.061 min Scan# 1636
 Delta R.T. -0.158 min
 Lab File: VX047872.D
 Acq: 29 Sep 2025 11:05



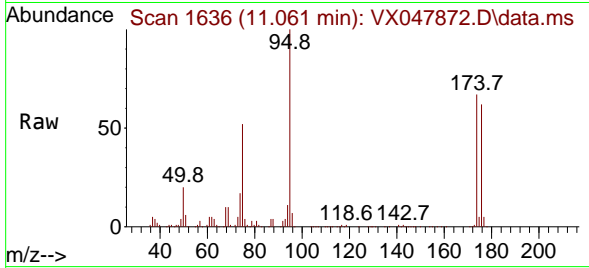
Tgt Ion: 75 Resp: 66370
 Ion Ratio Lower Upper
 75 100
 77 1.4 18.8 56.4#





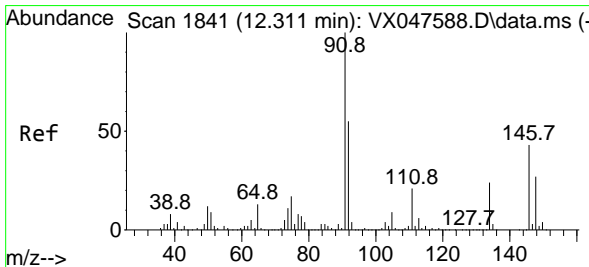
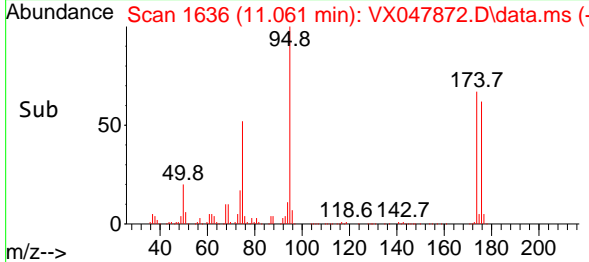
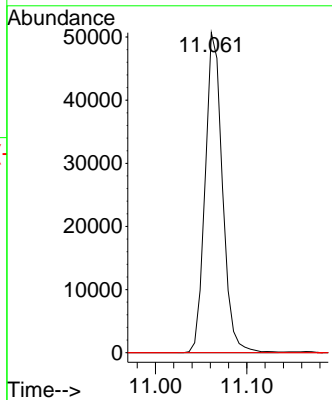
#81
 trans-1,4-Dichloro-2-butene
 Concen: 67.919 ug/l
 RT: 11.061 min Scan# 1106
 Delta R.T. 0.061 min
 Lab File: VX047872.D
 Acq: 29 Sep 2025 11:05

Instrument : MSVOA_X
 ClientSampleId : RW9-MW01D1-20250919



Tgt Ion: 75 Resp: 66370

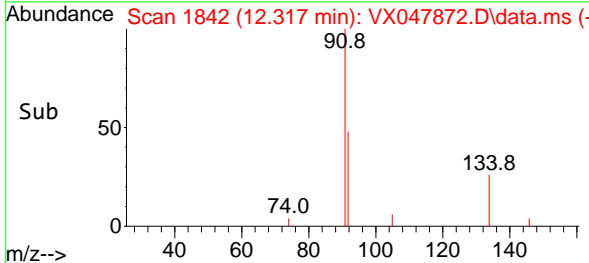
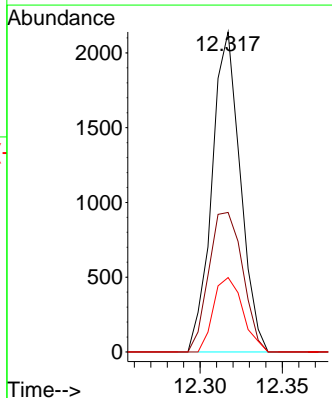
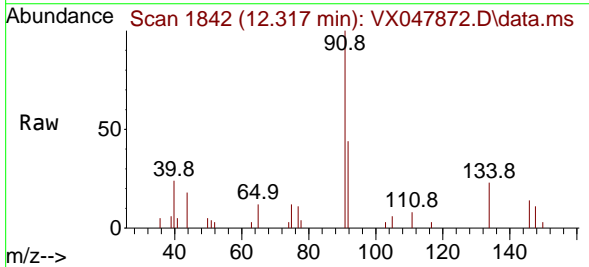
Ion	Ratio	Lower	Upper
75	100		
53	0.0	83.4	125.2#
89	0.0	36.3	54.5#

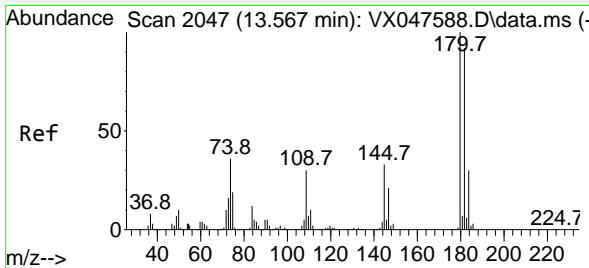


#89
 n-Butylbenzene
 Concen: 0.350 ug/l
 RT: 12.317 min Scan# 1842
 Delta R.T. 0.006 min
 Lab File: VX047872.D
 Acq: 29 Sep 2025 11:05

Tgt Ion: 91 Resp: 2566

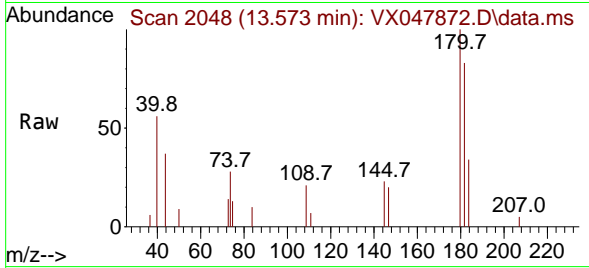
Ion	Ratio	Lower	Upper
91	100		
92	52.3	27.6	82.7
134	24.1	12.6	37.8



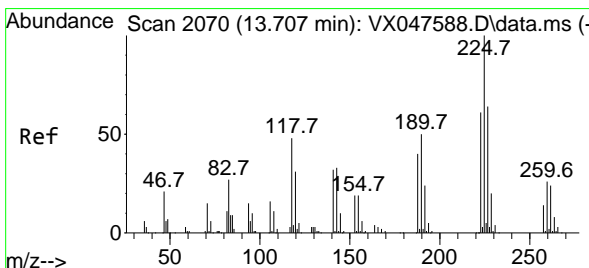
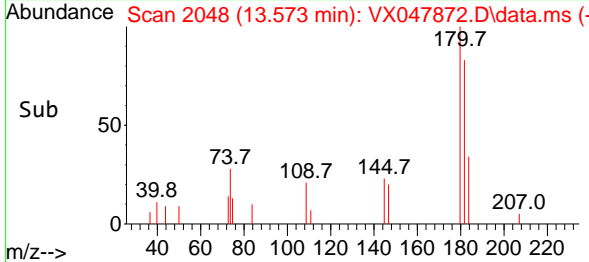
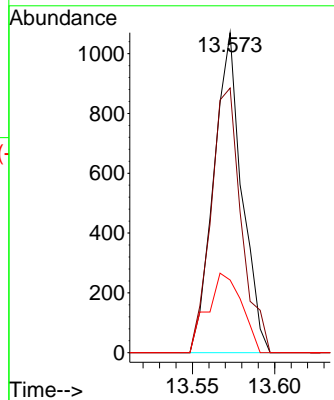


#93
 1,2,4-Trichlorobenzene
 Concen: 0.481 ug/l
 RT: 13.573 min Scan# 2048
 Delta R.T. 0.006 min
 Lab File: VX047872.D
 Acq: 29 Sep 2025 11:05

Instrument : MSVOA_X
 ClientSampleId : RW9-MW01D1-20250919

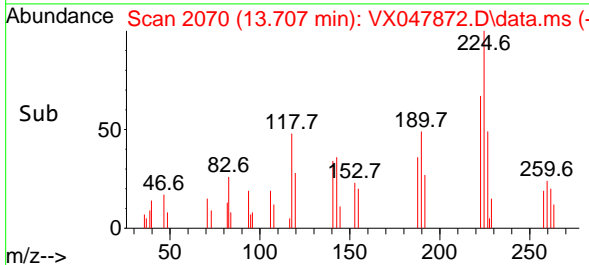
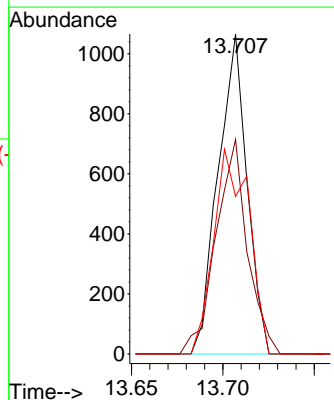
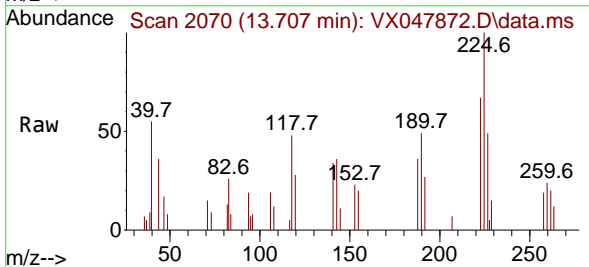


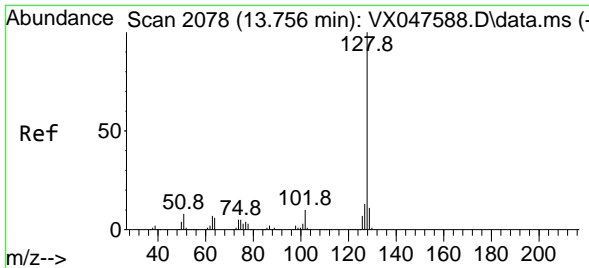
Tgt Ion:180 Resp: 1274
 Ion Ratio Lower Upper
 180 100
 182 89.0 46.6 139.8
 145 30.3 16.4 49.1



#94
 Hexachlorobutadiene
 Concen: 1.304 ug/l
 RT: 13.707 min Scan# 2070
 Delta R.T. 0.000 min
 Lab File: VX047872.D
 Acq: 29 Sep 2025 11:05

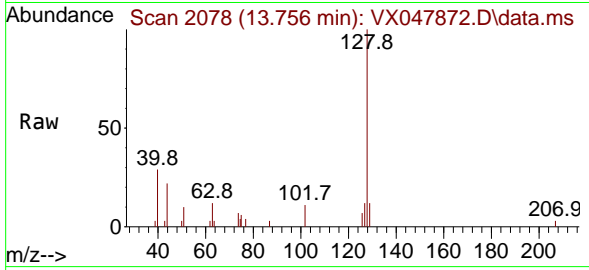
Tgt Ion:225 Resp: 1174
 Ion Ratio Lower Upper
 225 100
 223 72.8 31.7 95.1
 227 77.9 32.0 96.0





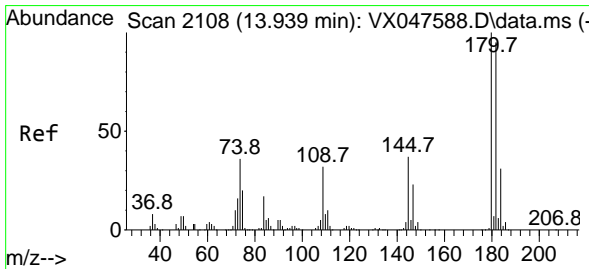
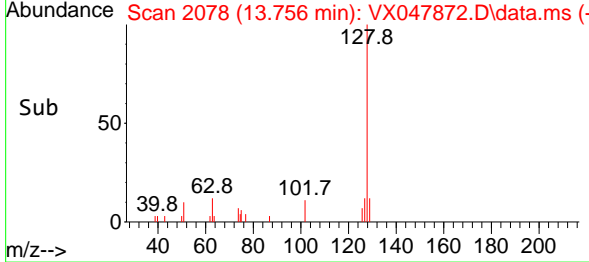
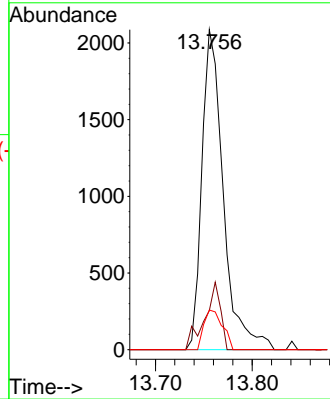
#95
 Naphthalene
 Concen: 0.398 ug/l
 RT: 13.756 min Scan# 2078
 Delta R.T. 0.000 min
 Lab File: VX047872.D
 Acq: 29 Sep 2025 11:05

Instrument : MSVOA_X
 ClientSampleId : RW9-MW01D1-20250919

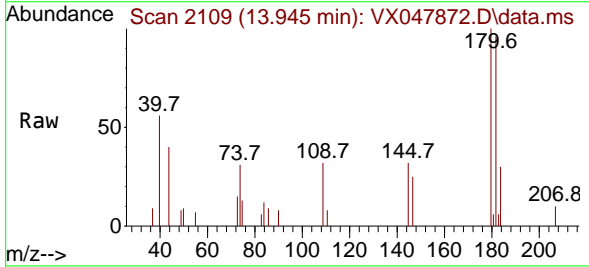


Tgt Ion:128 Resp: 3216

Ion	Ratio	Lower	Upper
128	100		
127	15.5	10.2	15.2#
129	10.8	8.8	13.2



#96
 1,2,3-Trichlorobenzene
 Concen: 0.470 ug/l
 RT: 13.945 min Scan# 2109
 Delta R.T. 0.006 min
 Lab File: VX047872.D
 Acq: 29 Sep 2025 11:05



Tgt Ion:180 Resp: 1159

Ion	Ratio	Lower	Upper
180	100		
182	92.7	47.6	142.8
145	25.8	17.9	53.7

