

Data Path : Z:\voasrv\HPCHEM1\MSVOA_X\Data\VX092925\
 Data File : VX047876.D
 Acq On : 29 Sep 2025 12:30
 Operator : JC/MD
 Sample : Q3156-13
 Misc : 5.0mL/MSVOA_X/WATER
 ALS Vial : 10 Sample Multiplier: 1

Instrument :
 MSVOA_X
 ClientSampleId :
 EB02-20250918

Quant Time: Sep 30 01:18:45 2025
 Quant Method : Z:\voasrv\HPCHEM1\MSVOA_X\Method\82X091625W.M
 Quant Title : SW846 8260
 QLast Update : Wed Sep 17 06:39:58 2025
 Response via : Initial Calibration

Compound	R.T.	QIon	Response	Conc	Units	Dev(Min)

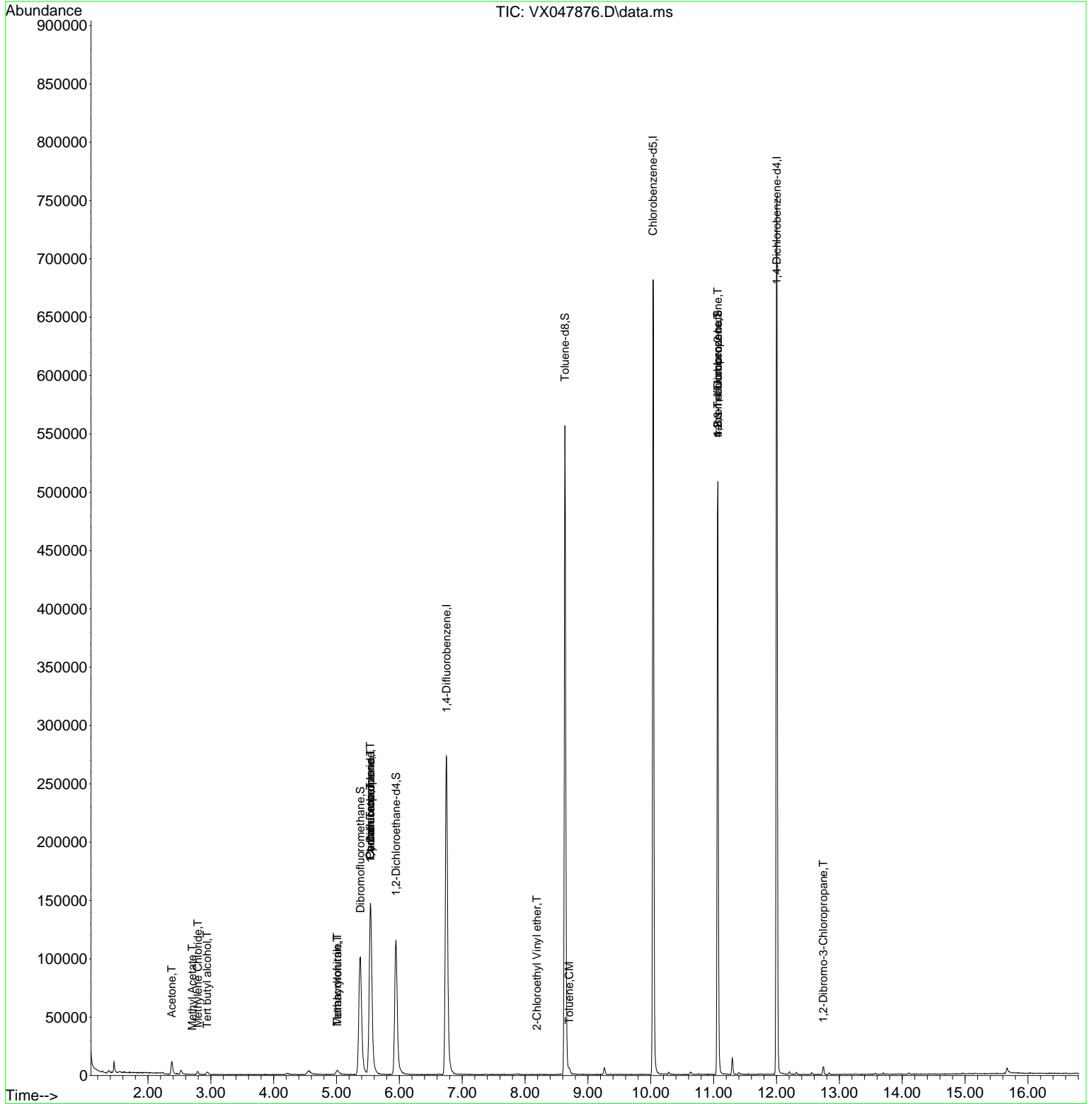
Internal Standards						
1) Pentafluorobenzene	5.538	168	147800	50.000	ug/l	0.00
34) 1,4-Difluorobenzene	6.751	114	298872	50.000	ug/l	0.00
63) Chlorobenzene-d5	10.037	117	312582	50.000	ug/l	0.00
72) 1,4-Dichlorobenzene-d4	12.006	152	158720	50.000	ug/l	0.00
System Monitoring Compounds						
33) 1,2-Dichloroethane-d4	5.946	65	124056	52.731	ug/l	0.00
Spiked Amount	50.000	Range 78 - 117	Recovery	=	105.460%	
35) Dibromofluoromethane	5.379	113	100561	50.170	ug/l	0.00
Spiked Amount	50.000	Range 75 - 124	Recovery	=	100.340%	
50) Toluene-d8	8.635	98	339834	48.998	ug/l	0.00
Spiked Amount	50.000	Range 92 - 112	Recovery	=	98.000%	
62) 4-Bromofluorobenzene	11.067	95	145925	55.439	ug/l	0.00
Spiked Amount	50.000	Range 83 - 123	Recovery	=	110.880%	
Target Compounds						
						Qvalue
11) Tert butyl alcohol	2.941	59	1526	5.824	ug/l #	77
16) Acetone	2.380	43	14651	14.323	ug/l	95
18) Methyl Acetate	2.703	43	640	0.281	ug/l #	62
20) Methylene Chloride	2.794	84	1153	0.533	ug/l #	72
29) Tetrahydrofuran	5.013	42	3950	5.146	ug/l #	87
31) Cyclohexane	5.538	56	3353	1.079	ug/l #	24
36) 1,1-Dichloropropene	5.544	75	12380	4.227	ug/l #	46
38) Carbon Tetrachloride	5.538	117	15455	4.857	ug/l #	18
41) Methacrylonitrile	5.013	41	2101	1.298	ug/l #	47
52) Toluene	8.702	92	1293	0.236	ug/l	93
58) 2-Chloroethyl Vinyl ether	8.190	63	26	7.909	ug/l #	47
76) 1,2,3-Trichloropropane	11.067	75	76713	23.871	ug/l #	39
81) trans-1,4-Dichloro-2-b...	11.067	75	76713	60.876	ug/l #	8
92) 1,2-Dibromo-3-Chloropr...	12.744	75	264	0.357	ug/l #	5

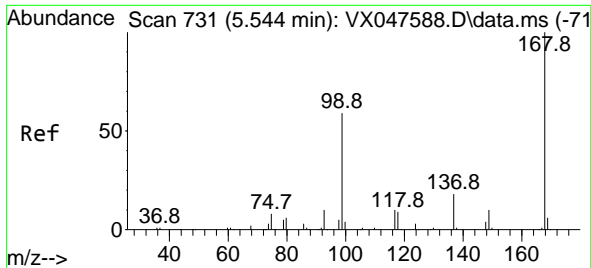
(#) = qualifier out of range (m) = manual integration (+) = signals summed

Data Path : Z:\voasrv\HPCHEM1\MSVOA_X\Data\VX092925\
 Data File : VX047876.D
 Acq On : 29 Sep 2025 12:30
 Operator : JC/MD
 Sample : Q3156-13
 Misc : 5.0mL/MSVOA_X/WATER
 ALS Vial : 10 Sample Multiplier: 1

Instrument :
 MSVOA_X
 ClientSampleId :
 EB02-20250918

Quant Time: Sep 30 01:18:45 2025
 Quant Method : Z:\voasrv\HPCHEM1\MSVOA_X\Method\82X091625W.M
 Quant Title : SW846 8260
 QLast Update : Wed Sep 17 06:39:58 2025
 Response via : Initial Calibration

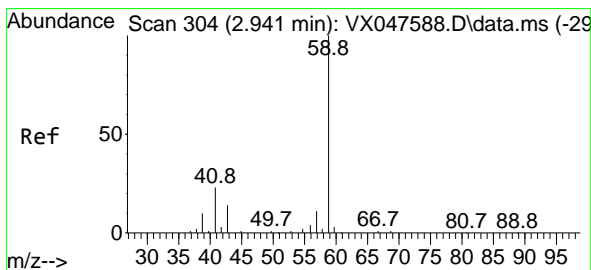
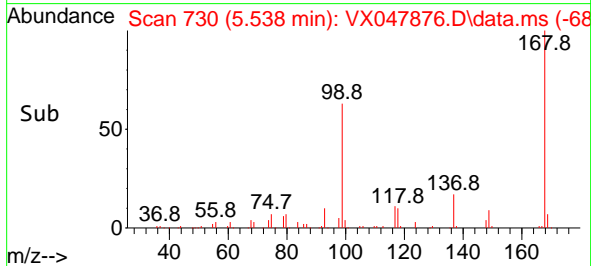
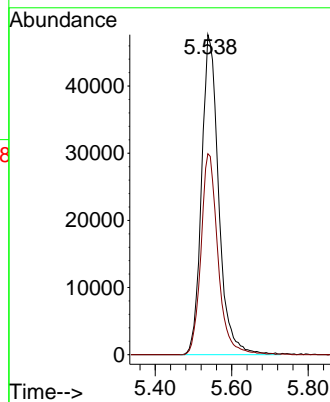
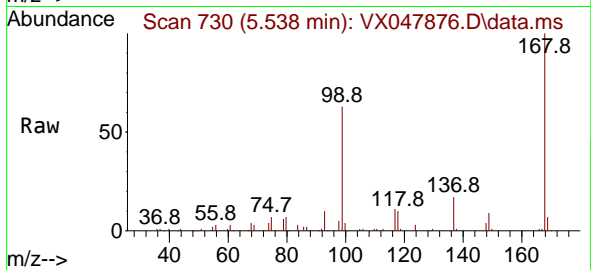




#1
 Pentafluorobenzene
 Concen: 50.000 ug/l
 RT: 5.538 min Scan# 71
 Delta R.T. -0.006 min
 Lab File: VX047876.D
 Acq: 29 Sep 2025 12:30

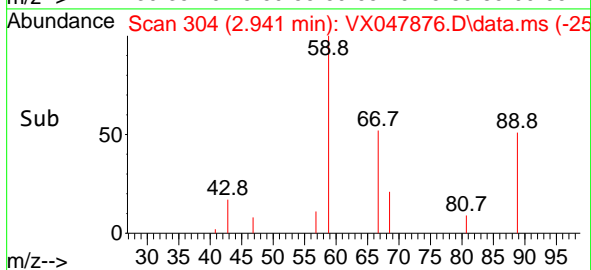
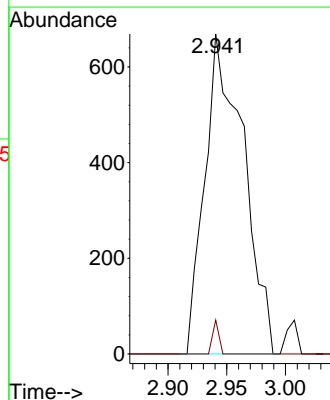
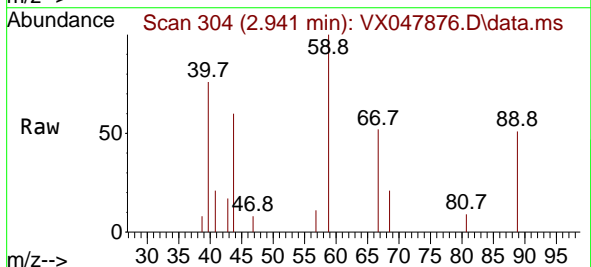
Instrument : MSVOA_X
 ClientSampleId : EB02-20250918

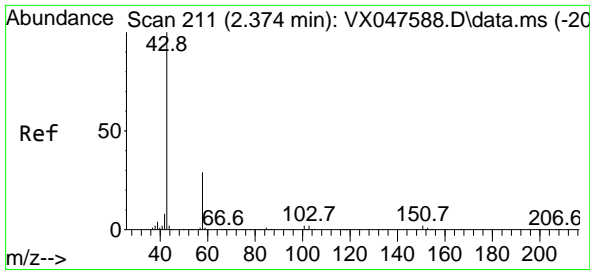
Tgt Ion:168 Resp: 147800
 Ion Ratio Lower Upper
 168 100
 99 62.8 48.8 73.2



#11
 Tert butyl alcohol
 Concen: 5.824 ug/l
 RT: 2.941 min Scan# 304
 Delta R.T. -0.000 min
 Lab File: VX047876.D
 Acq: 29 Sep 2025 12:30

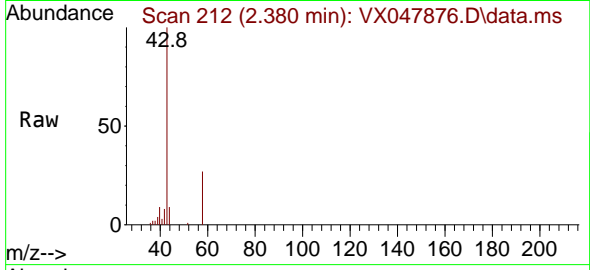
Tgt Ion: 59 Resp: 1526
 Ion Ratio Lower Upper
 59 100
 57 1.7 8.3 12.5#



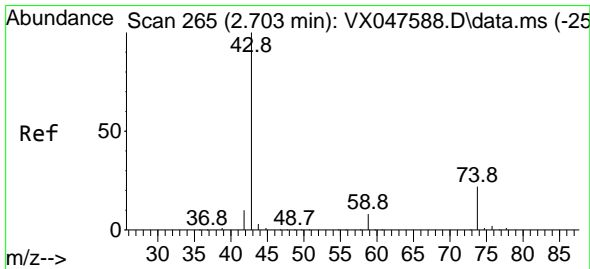
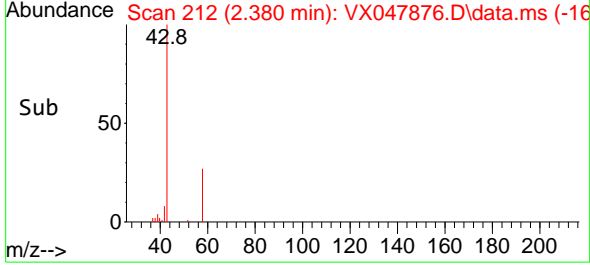
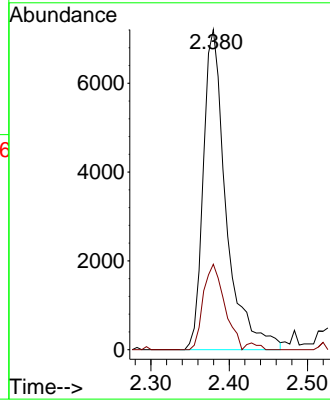


#16
 Acetone
 Concen: 14.323 ug/l
 RT: 2.380 min Scan# 211
 Delta R.T. 0.006 min
 Lab File: VX047876.D
 Acq: 29 Sep 2025 12:30

Instrument : MSVOA_X
 ClientSampleId : EB02-20250918

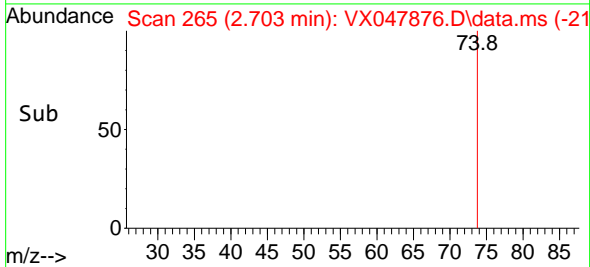
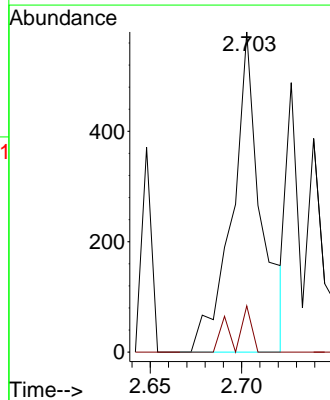
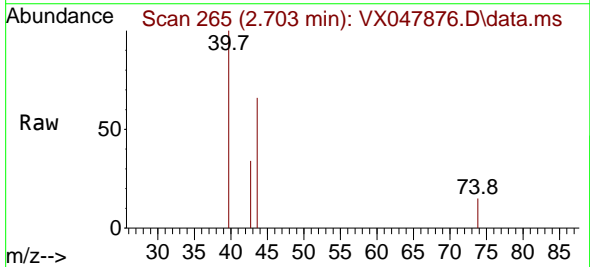


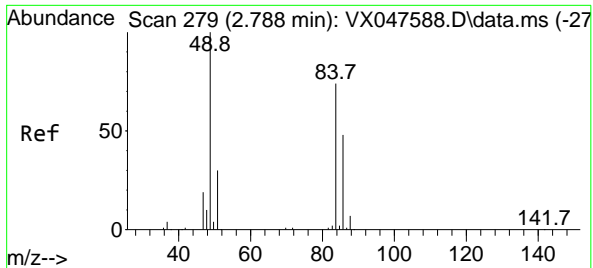
Tgt Ion: 43 Resp: 14651
 Ion Ratio Lower Upper
 43 100
 58 26.7 23.4 35.0



#18
 Methyl Acetate
 Concen: 0.281 ug/l
 RT: 2.703 min Scan# 265
 Delta R.T. -0.000 min
 Lab File: VX047876.D
 Acq: 29 Sep 2025 12:30

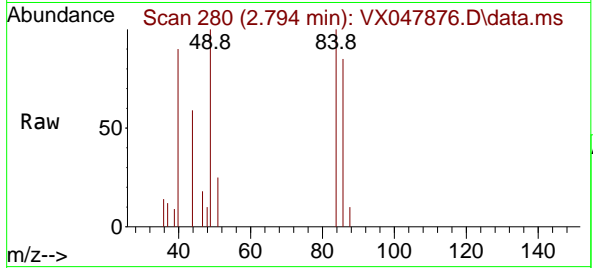
Tgt Ion: 43 Resp: 640
 Ion Ratio Lower Upper
 43 100
 74 3.8 17.4 26.2#





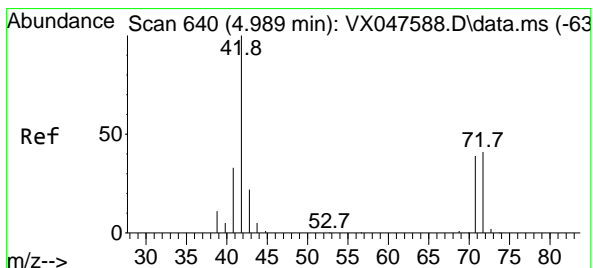
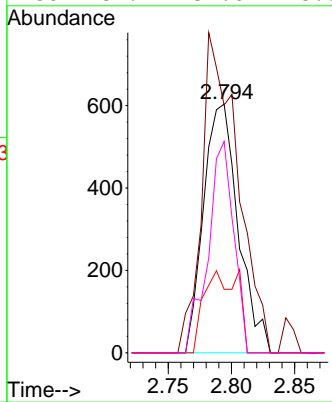
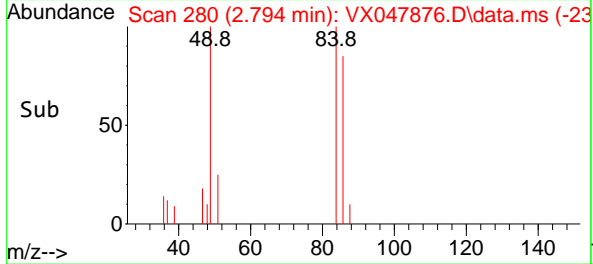
#20
 Methylene Chloride
 Concen: 0.533 ug/l
 RT: 2.794 min Scan# 21
 Delta R.T. 0.006 min
 Lab File: VX047876.D
 Acq: 29 Sep 2025 12:30

Instrument :
 MSVOA_X
 ClientSampleId :
 EB02-20250918

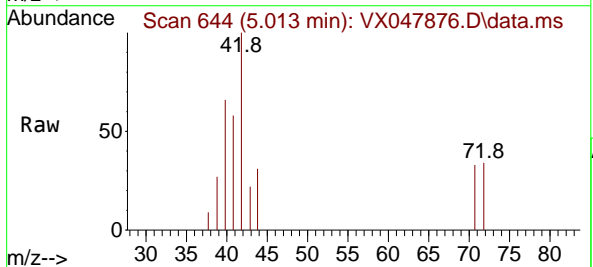


Tgt Ion: 84 Resp: 1153

Ion	Ratio	Lower	Upper
84	100		
49	99.5	108.6	162.8#
51	25.5	32.6	48.8#
86	84.9	52.0	78.0#

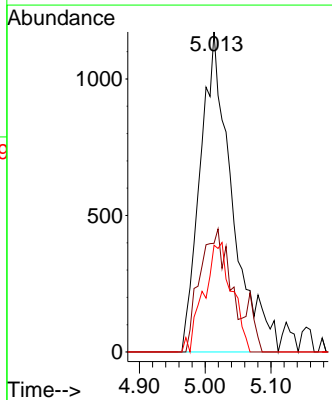
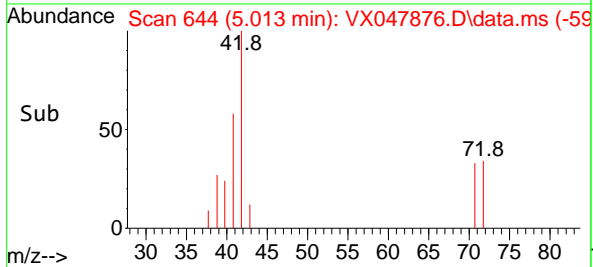


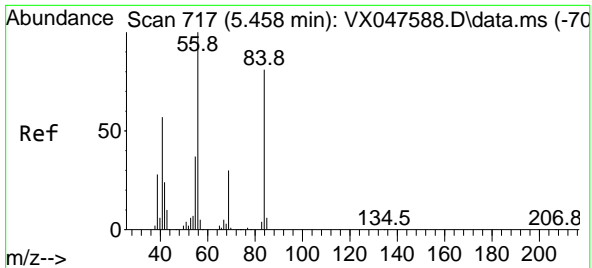
#29
 Tetrahydrofuran
 Concen: 5.146 ug/l
 RT: 5.013 min Scan# 644
 Delta R.T. 0.024 min
 Lab File: VX047876.D
 Acq: 29 Sep 2025 12:30



Tgt Ion: 42 Resp: 3950

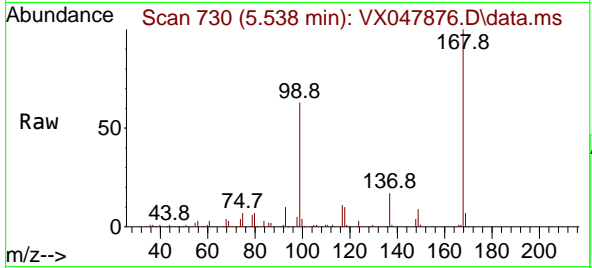
Ion	Ratio	Lower	Upper
42	100		
72	36.2	34.2	51.2
71	30.3	31.9	47.9#





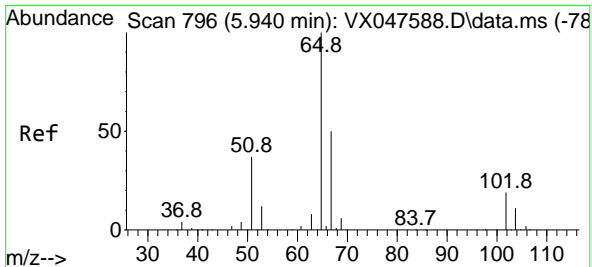
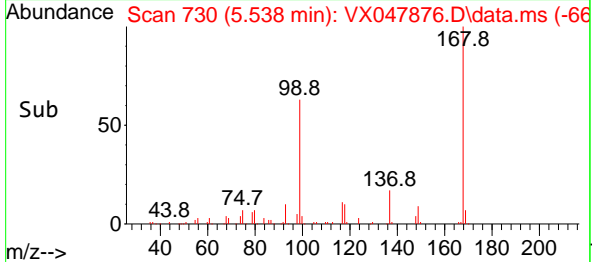
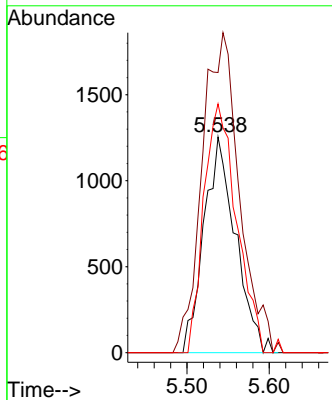
#31
 Cyclohexane
 Concen: 1.079 ug/l
 RT: 5.538 min Scan# 717
 Delta R.T. 0.079 min
 Lab File: VX047876.D
 Acq: 29 Sep 2025 12:30

Instrument : MSVOA_X
 ClientSampleId : EB02-20250918



Tgt Ion: 56 Resp: 3353

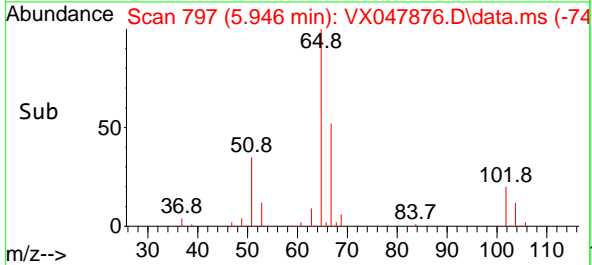
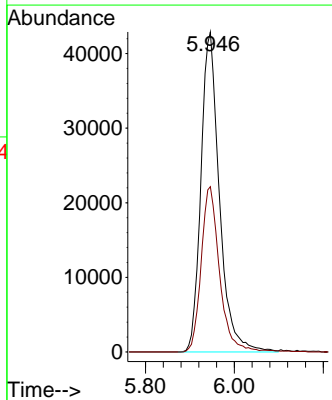
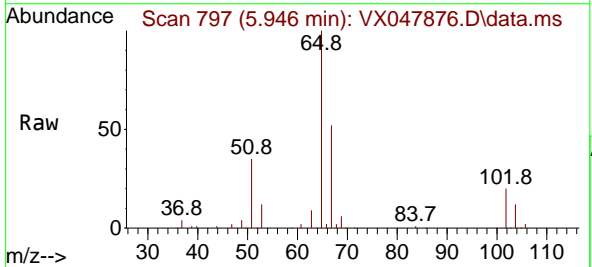
Ion	Ratio	Lower	Upper
56	100		
69	125.2	23.8	35.8#
84	115.4	64.6	97.0#

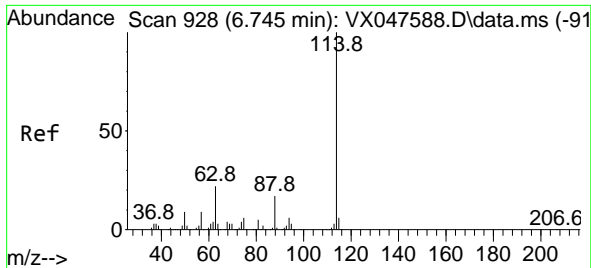


#33
 1,2-Dichloroethane-d4
 Concen: 52.731 ug/l
 RT: 5.946 min Scan# 797
 Delta R.T. 0.006 min
 Lab File: VX047876.D
 Acq: 29 Sep 2025 12:30

Tgt Ion: 65 Resp: 124056

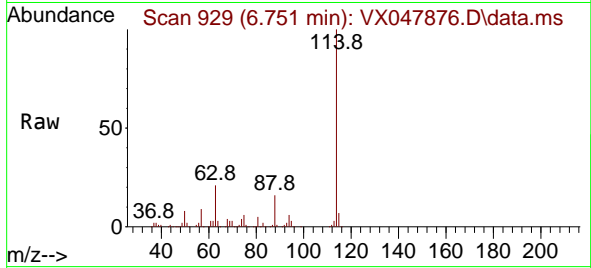
Ion	Ratio	Lower	Upper
65	100		
67	51.5	0.0	103.0



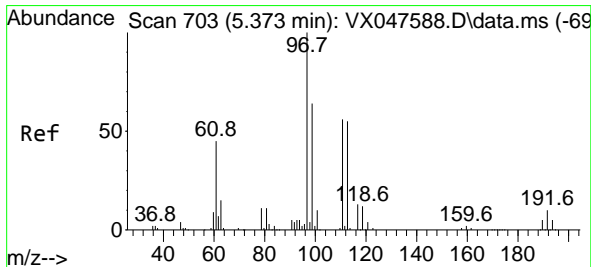
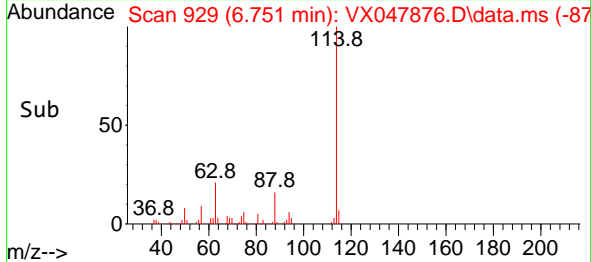
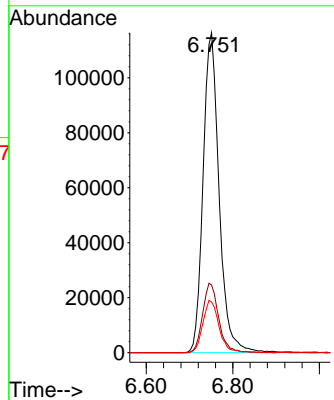


#34
 1,4-Difluorobenzene
 Concen: 50.000 ug/l
 RT: 6.751 min Scan# 91
 Delta R.T. 0.006 min
 Lab File: VX047876.D
 Acq: 29 Sep 2025 12:30

Instrument : MSVOA_X
 ClientSampleId : EB02-20250918

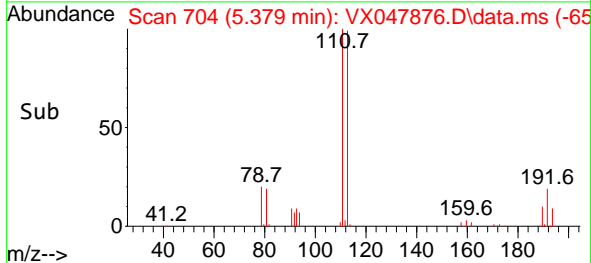
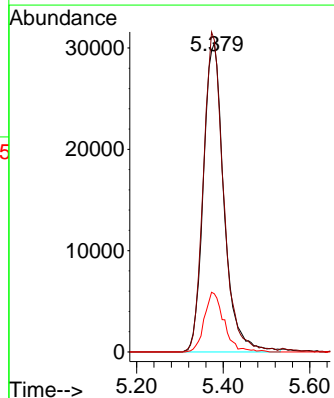
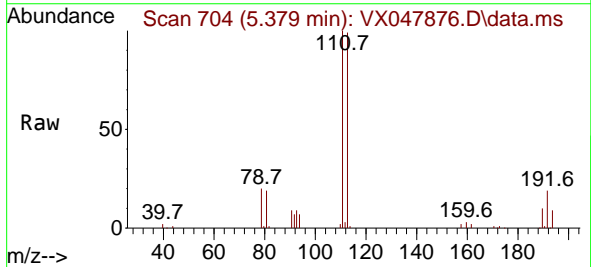


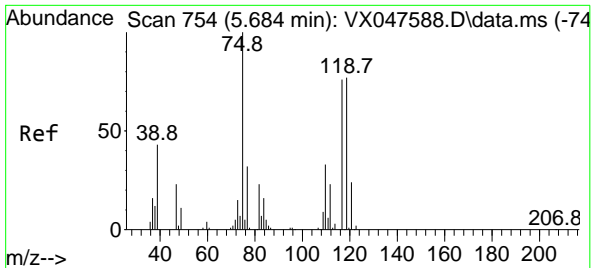
Tgt Ion:114 Resp: 298872
 Ion Ratio Lower Upper
 114 100
 63 21.1 0.0 44.0
 88 15.8 0.0 34.2



#35
 Dibromofluoromethane
 Concen: 50.170 ug/l
 RT: 5.379 min Scan# 704
 Delta R.T. 0.006 min
 Lab File: VX047876.D
 Acq: 29 Sep 2025 12:30

Tgt Ion:113 Resp: 100561
 Ion Ratio Lower Upper
 113 100
 111 101.1 80.9 121.3
 192 18.4 14.2 21.4

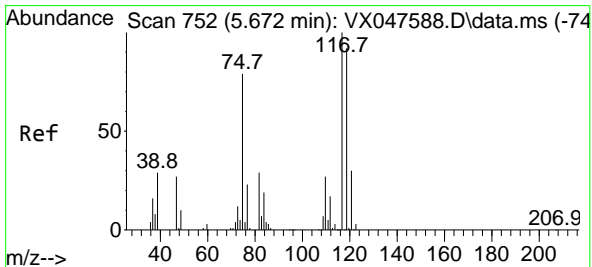
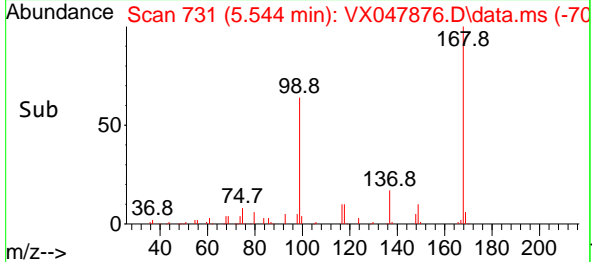
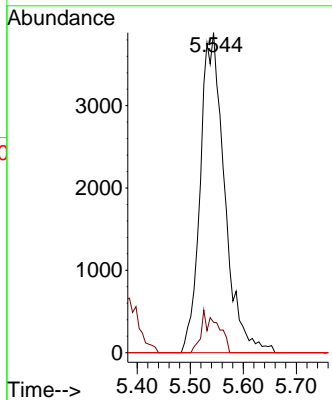
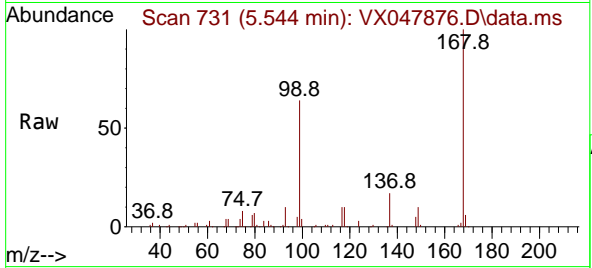




#36
 1,1-Dichloropropene
 Concen: 4.227 ug/l
 RT: 5.544 min Scan# 710
 Delta R.T. -0.140 min
 Lab File: VX047876.D
 Acq: 29 Sep 2025 12:30

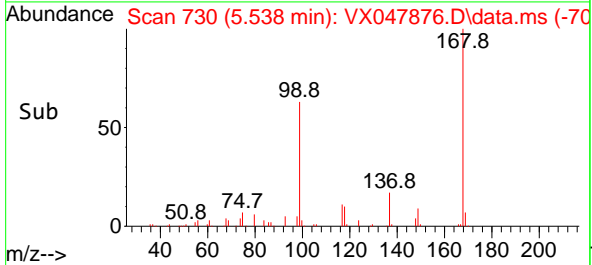
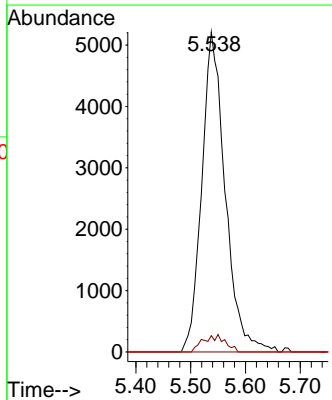
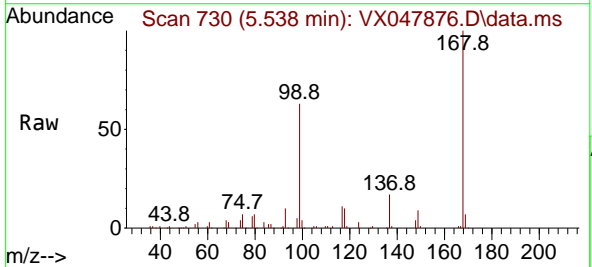
Instrument : MSVOA_X
 ClientSampleId : EB02-20250918

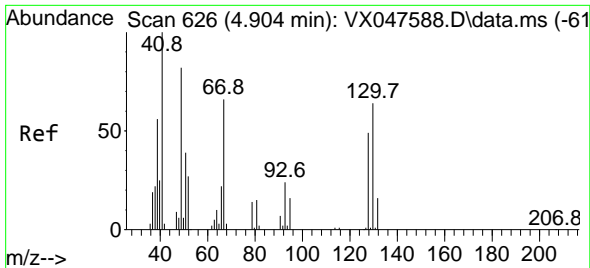
Tgt Ion: 75 Resp: 12380
 Ion Ratio Lower Upper
 75 100
 110 3.4 16.7 50.1#
 77 0.0 24.3 36.5#



#38
 Carbon Tetrachloride
 Concen: 4.857 ug/l
 RT: 5.538 min Scan# 730
 Delta R.T. -0.134 min
 Lab File: VX047876.D
 Acq: 29 Sep 2025 12:30

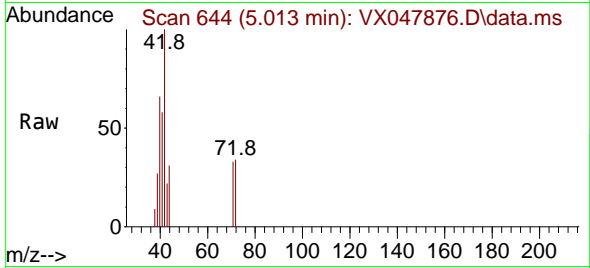
Tgt Ion: 117 Resp: 15455
 Ion Ratio Lower Upper
 117 100
 119 5.1 73.4 110.2#
 121 0.0 23.8 35.6#



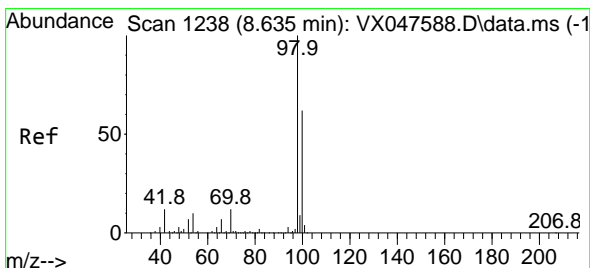
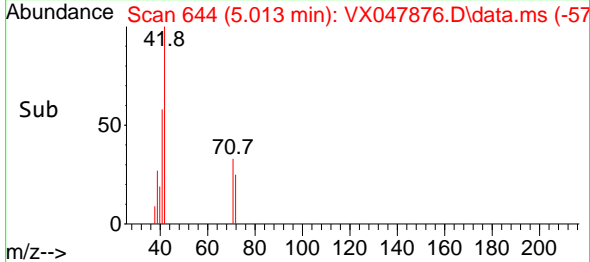
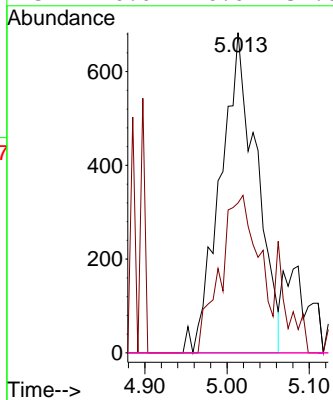


#41
 Methacrylonitrile
 Concen: 1.298 ug/l
 RT: 5.013 min Scan# 644
 Delta R.T. 0.110 min
 Lab File: VX047876.D
 Acq: 29 Sep 2025 12:30

Instrument : MSVOA_X
 ClientSampleId : EB02-20250918

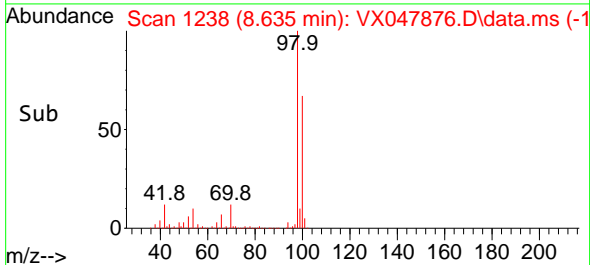
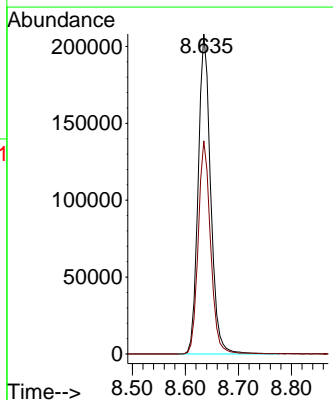
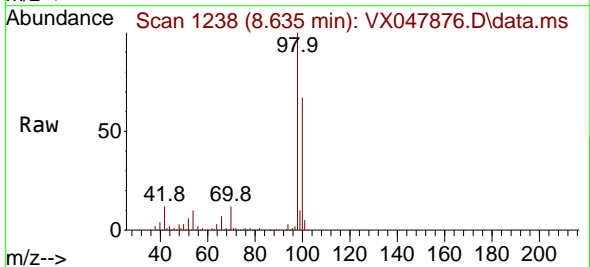


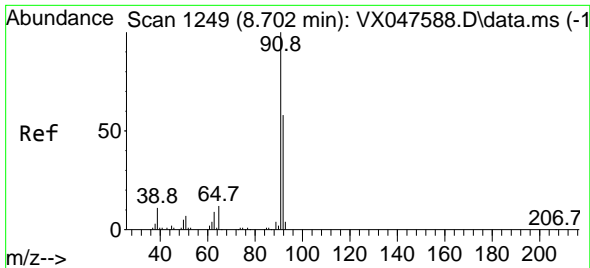
Tgt Ion: 41 Resp: 2101
 Ion Ratio Lower Upper
 41 100
 39 52.3 43.3 64.9
 67 0.0 58.6 87.8#
 52 0.0 26.0 39.0#



#50
 Toluene-d8
 Concen: 48.998 ug/l
 RT: 8.635 min Scan# 1238
 Delta R.T. -0.000 min
 Lab File: VX047876.D
 Acq: 29 Sep 2025 12:30

Tgt Ion: 98 Resp: 339834
 Ion Ratio Lower Upper
 98 100
 100 66.2 53.0 79.4

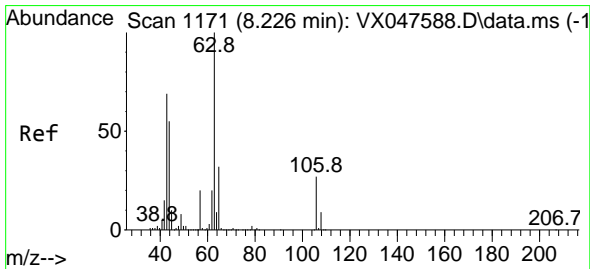
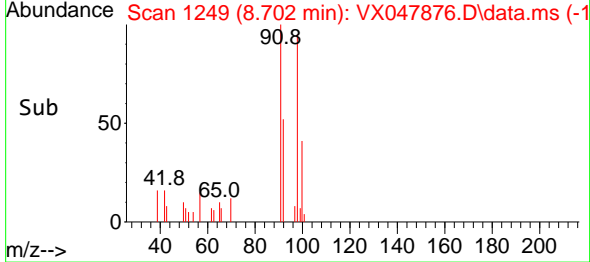
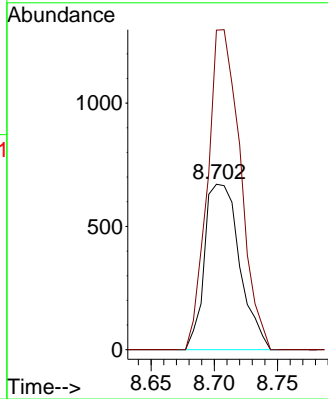
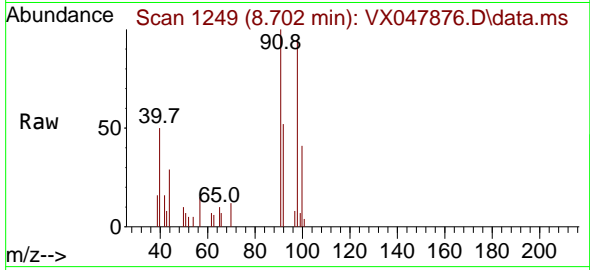




#52
 Toluene
 Concen: 0.236 ug/l
 RT: 8.702 min Scan# 1165
 Delta R.T. -0.000 min
 Lab File: VX047876.D
 Acq: 29 Sep 2025 12:30

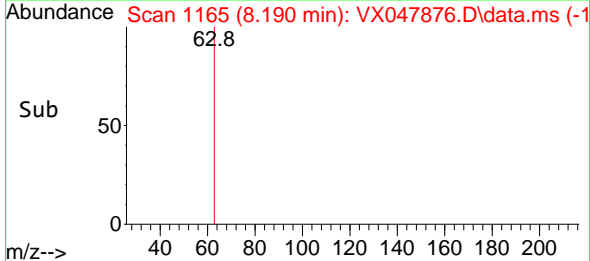
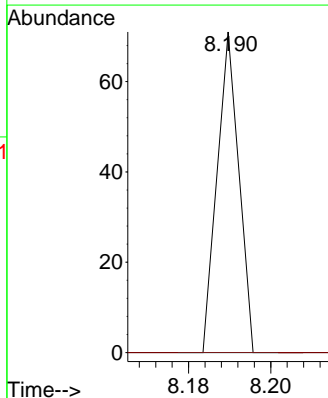
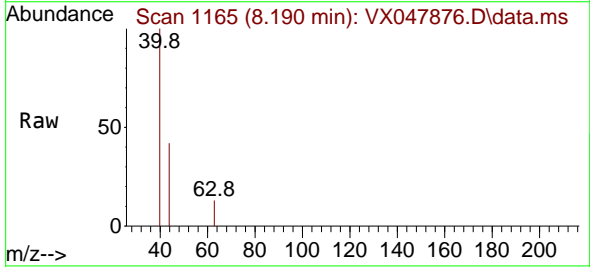
Instrument : MSVOA_X
 ClientSampleId : EB02-20250918

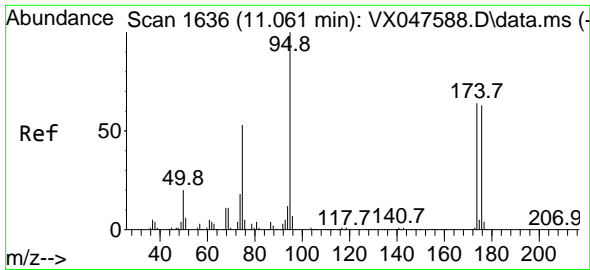
Tgt Ion: 92 Resp: 1293
 Ion Ratio Lower Upper
 92 100
 91 181.4 137.1 205.7



#58
 2-Chloroethyl Vinyl ether
 Concen: 7.909 ug/l
 RT: 8.190 min Scan# 1165
 Delta R.T. -0.036 min
 Lab File: VX047876.D
 Acq: 29 Sep 2025 12:30

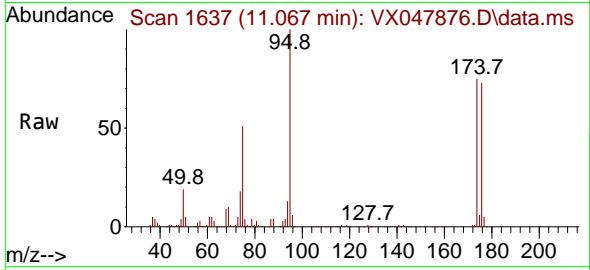
Tgt Ion: 63 Resp: 26
 Ion Ratio Lower Upper
 63 100
 106 0.0 21.9 32.9#





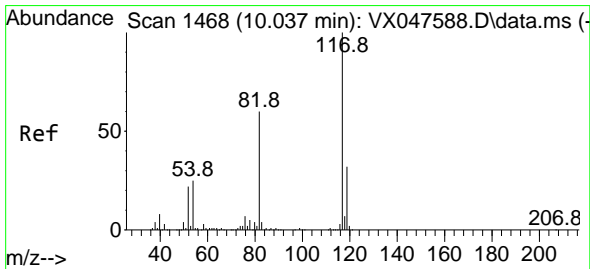
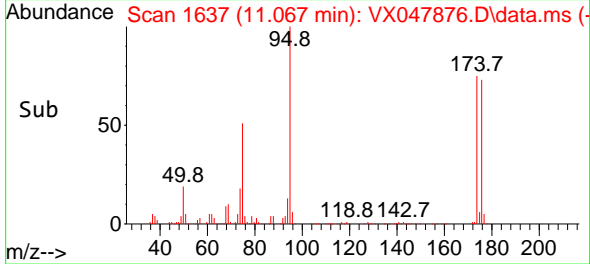
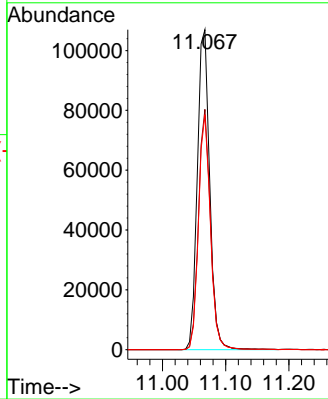
#62
 4-Bromofluorobenzene
 Concen: 55.439 ug/l
 RT: 11.067 min Scan# 11
 Delta R.T. 0.006 min
 Lab File: VX047876.D
 Acq: 29 Sep 2025 12:30

Instrument : MSVOA_X
 ClientSampleId : EB02-20250918



Tgt Ion: 95 Resp: 145925

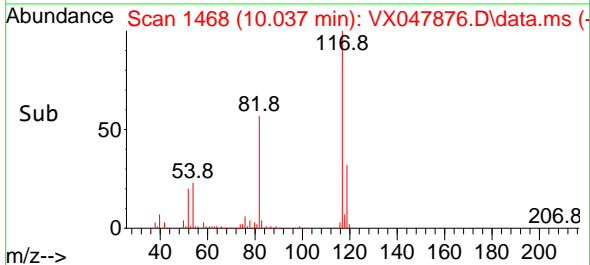
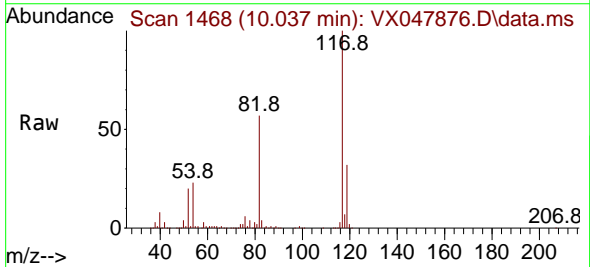
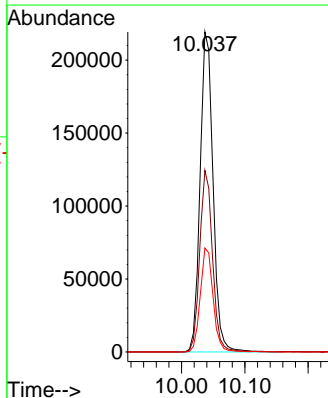
Ion	Ratio	Lower	Upper
95	100		
174	72.8	0.0	141.6
176	70.6	0.0	138.4

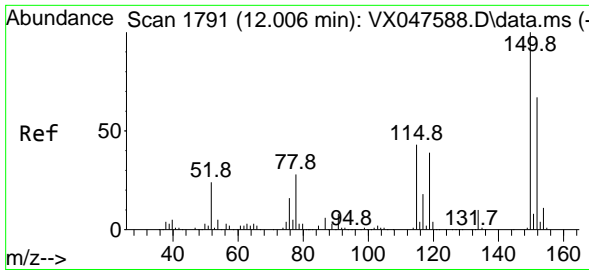


#63
 Chlorobenzene-d5
 Concen: 50.000 ug/l
 RT: 10.037 min Scan# 1468
 Delta R.T. -0.000 min
 Lab File: VX047876.D
 Acq: 29 Sep 2025 12:30

Tgt Ion: 117 Resp: 312582

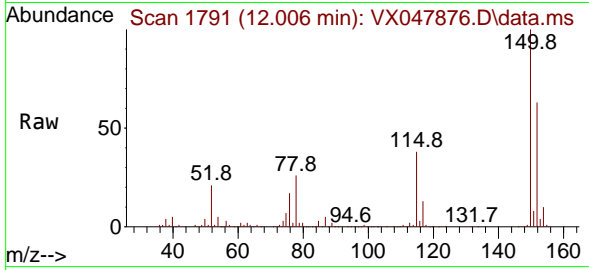
Ion	Ratio	Lower	Upper
117	100		
82	56.7	47.8	71.6
119	32.5	25.2	37.8



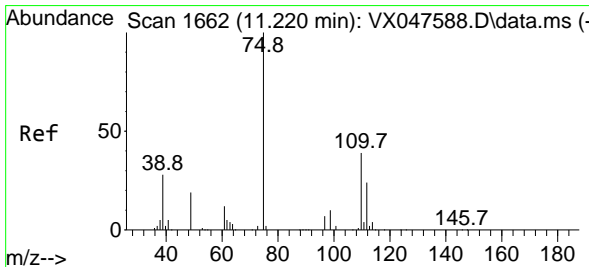
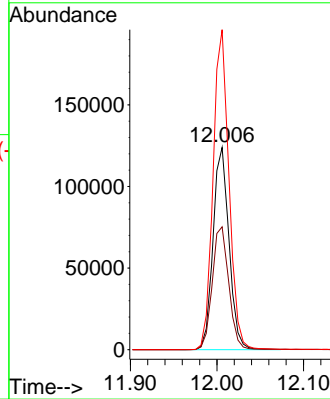
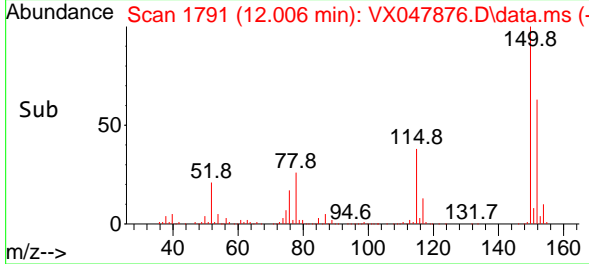


#72
 1,4-Dichlorobenzene-d4
 Concen: 50.000 ug/l
 RT: 12.006 min Scan# 11
 Delta R.T. -0.000 min
 Lab File: VX047876.D
 Acq: 29 Sep 2025 12:30

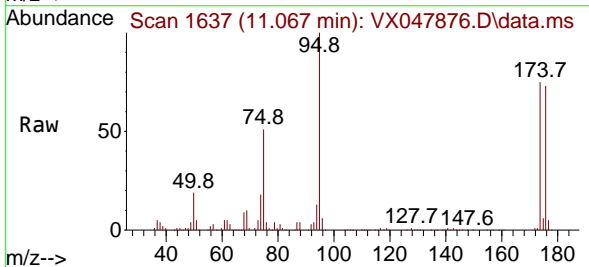
Instrument : MSVOA_X
 ClientSampleId : EB02-20250918



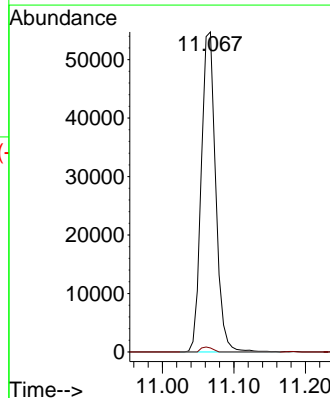
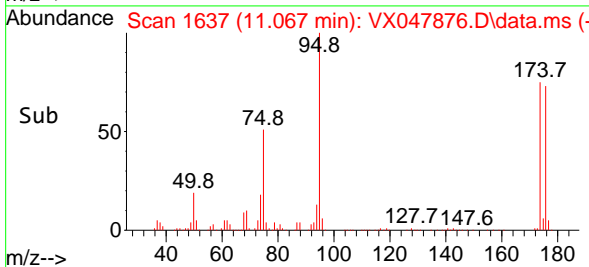
Tgt Ion:152 Resp: 158720
 Ion Ratio Lower Upper
 152 100
 115 63.1 44.9 134.5
 150 157.6 0.0 352.0

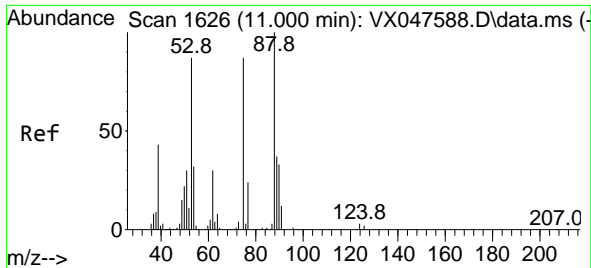


#76
 1,2,3-Trichloropropane
 Concen: 23.871 ug/l
 RT: 11.067 min Scan# 1637
 Delta R.T. -0.152 min
 Lab File: VX047876.D
 Acq: 29 Sep 2025 12:30



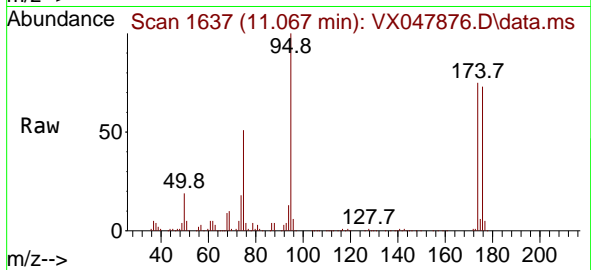
Tgt Ion: 75 Resp: 76713
 Ion Ratio Lower Upper
 75 100
 77 1.2 18.8 56.4#



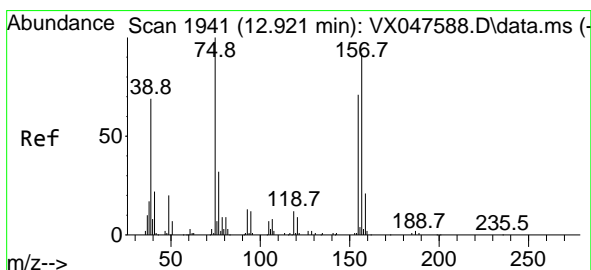
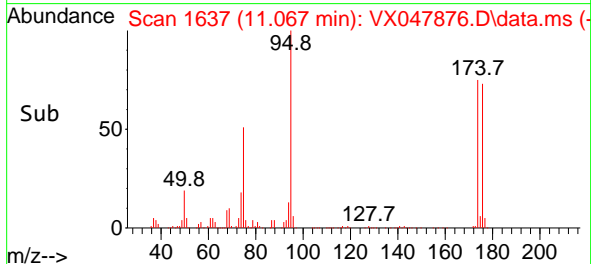
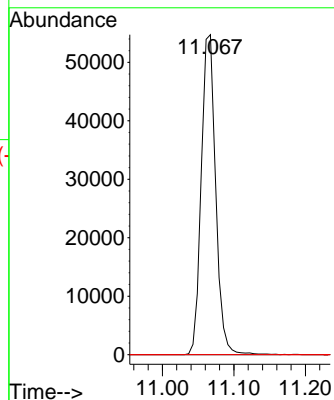


#81
 trans-1,4-Dichloro-2-butene
 Concen: 60.876 ug/l
 RT: 11.067 min Scan# 11067
 Delta R.T. 0.067 min
 Lab File: VX047876.D
 Acq: 29 Sep 2025 12:30

Instrument : MSVOA_X
 ClientSampleId : EB02-20250918



Tgt Ion: 75 Resp: 76713
 Ion Ratio Lower Upper
 75 100
 53 0.0 83.4 125.2#
 89 0.0 36.3 54.5#



#92
 1,2-Dibromo-3-Chloropropane
 Concen: 0.357 ug/l
 RT: 12.744 min Scan# 1912
 Delta R.T. -0.177 min
 Lab File: VX047876.D
 Acq: 29 Sep 2025 12:30

Tgt Ion: 75 Resp: 264
 Ion Ratio Lower Upper
 75 100
 155 0.0 37.7 113.1#
 157 0.0 49.8 149.4#

