

Data Path : Z:\voasrv\HPCHEM1\MSVOA_X\Data\VX092925\
 Data File : VX047877.D
 Acq On : 29 Sep 2025 12:52
 Operator : JC/MD
 Sample : Q3156-18
 Misc : 5.0mL/MSVOA_X/WATER
 ALS Vial : 11 Sample Multiplier: 1

Instrument :
 MSVOA_X
 ClientSampleId :
 RW9-MW01S-20250918

Quant Time: Sep 30 01:19:10 2025
 Quant Method : Z:\voasrv\HPCHEM1\MSVOA_X\Method\82X091625W.M
 Quant Title : SW846 8260
 QLast Update : Wed Sep 17 06:39:58 2025
 Response via : Initial Calibration

Compound	R.T.	QIon	Response	Conc	Units	Dev(Min)

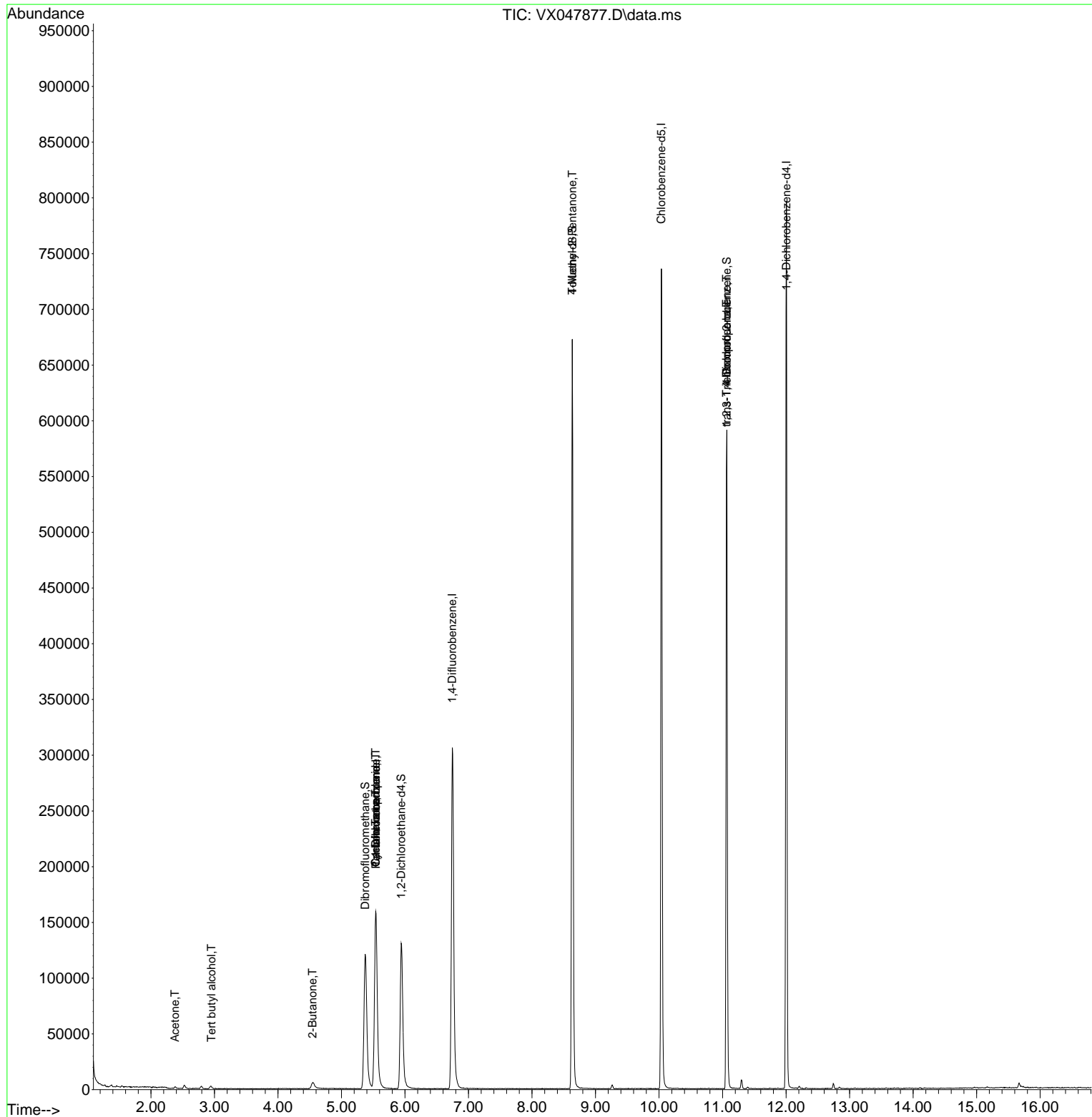
Internal Standards						
1) Pentafluorobenzene	5.544	168	160113	50.000	ug/l	0.00
34) 1,4-Difluorobenzene	6.745	114	334305	50.000	ug/l	0.00
63) Chlorobenzene-d5	10.037	117	338507	50.000	ug/l	0.00
72) 1,4-Dichlorobenzene-d4	12.006	152	163316	50.000	ug/l	0.00
System Monitoring Compounds						
33) 1,2-Dichloroethane-d4	5.940	65	142972	56.098	ug/l	0.00
Spiked Amount	50.000	Range 78 - 117	Recovery	=	112.200%	
35) Dibromofluoromethane	5.373	113	118667	52.928	ug/l	0.00
Spiked Amount	50.000	Range 75 - 124	Recovery	=	105.860%	
50) Toluene-d8	8.634	98	407285	52.500	ug/l	0.00
Spiked Amount	50.000	Range 92 - 112	Recovery	=	105.000%	
62) 4-Bromofluorobenzene	11.067	95	168815	57.337	ug/l	0.00
Spiked Amount	50.000	Range 83 - 123	Recovery	=	114.680%	
Target Compounds						
						Qvalue
11) Tert butyl alcohol	2.953	59	1243	4.379	ug/l #	72
16) Acetone	2.380	43	1669	1.506	ug/l	100
25) 2-Butanone	4.544	43	485	0.351	ug/l #	50
31) Cyclohexane	5.537	56	3706	1.100	ug/l #	1
36) 1,1-Dichloropropene	5.537	75	13760	4.200	ug/l #	51
38) Carbon Tetrachloride	5.537	117	16757	4.708	ug/l #	19
51) 4-Methyl-2-Pentanone	8.634	43	1974	0.619	ug/l #	1
76) 1,2,3-Trichloropropane	11.061	75	85827	25.956	ug/l #	39
81) trans-1,4-Dichloro-2-b...	11.061	75	85827	66.191	ug/l #	8

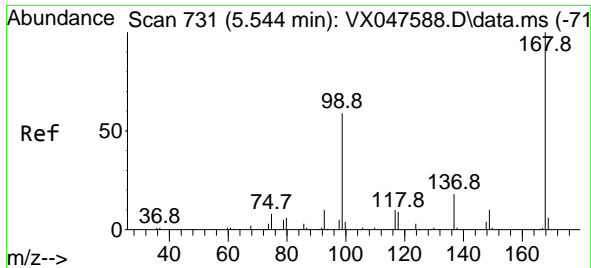
(#) = qualifier out of range (m) = manual integration (+) = signals summed

Data Path : Z:\voasrv\HPCHEM1\MSVOA_X\Data\VX092925\
 Data File : VX047877.D
 Acq On : 29 Sep 2025 12:52
 Operator : JC/MD
 Sample : Q3156-18
 Misc : 5.0mL/MSVOA_X/WATER
 ALS Vial : 11 Sample Multiplier: 1

Instrument :
 MSVOA_X
 ClientSampleId :
 RW9-MW01S-20250918

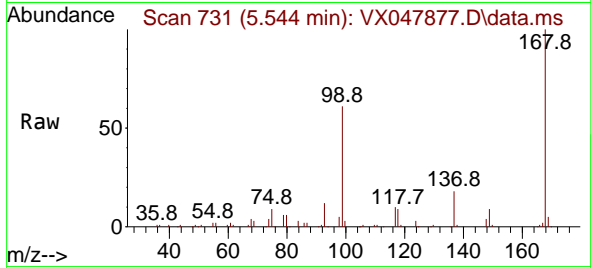
Quant Time: Sep 30 01:19:10 2025
 Quant Method : Z:\voasrv\HPCHEM1\MSVOA_X\Method\82X091625W.M
 Quant Title : SW846 8260
 QLast Update : Wed Sep 17 06:39:58 2025
 Response via : Initial Calibration



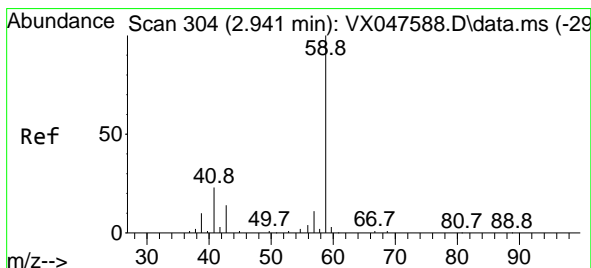
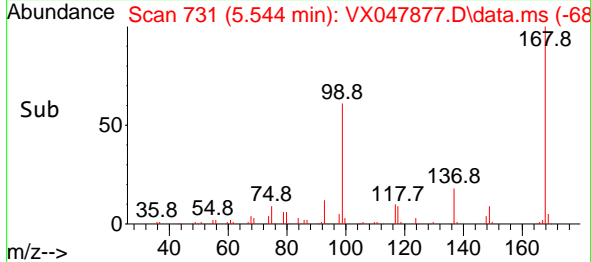
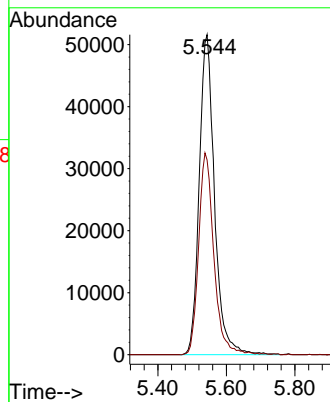


#1
 Pentafluorobenzene
 Concen: 50.000 ug/l
 RT: 5.544 min Scan# 71
 Delta R.T. -0.000 min
 Lab File: VX047877.D
 Acq: 29 Sep 2025 12:52

Instrument : MSVOA_X
 ClientSampleId : RW9-MW01S-20250918

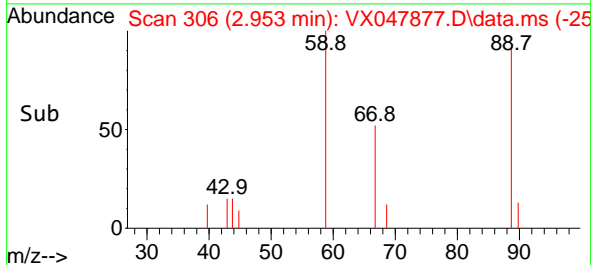
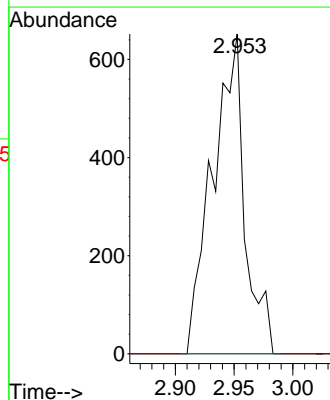
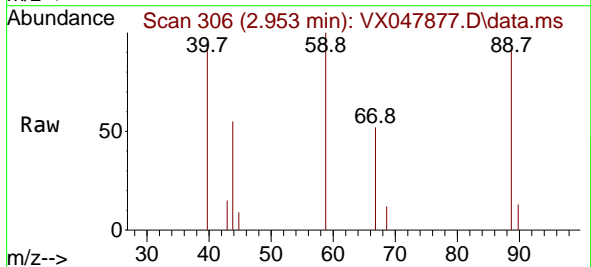


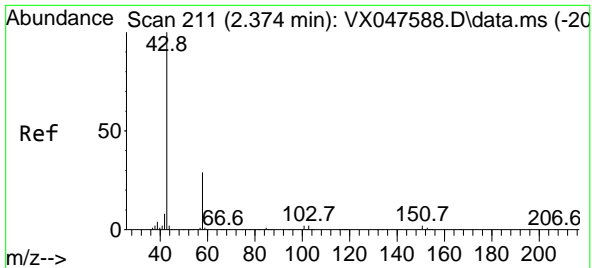
Tgt Ion:168 Resp: 160113
 Ion Ratio Lower Upper
 168 100
 99 60.8 48.8 73.2



#11
 Tert butyl alcohol
 Concen: 4.379 ug/l
 RT: 2.953 min Scan# 306
 Delta R.T. 0.012 min
 Lab File: VX047877.D
 Acq: 29 Sep 2025 12:52

Tgt Ion: 59 Resp: 1243
 Ion Ratio Lower Upper
 59 100
 57 0.0 8.3 12.5#

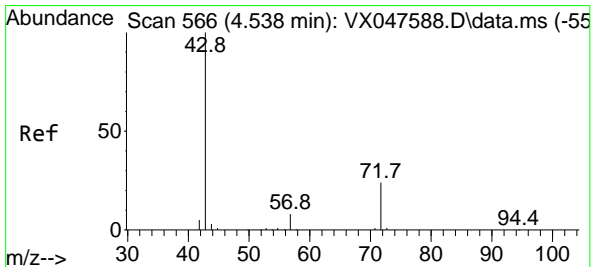
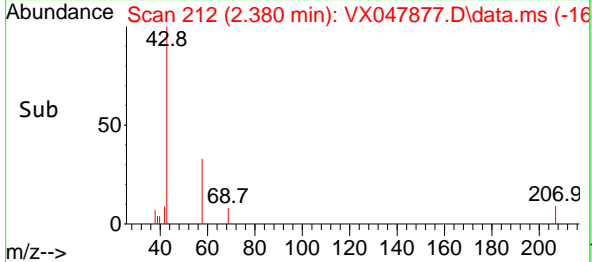
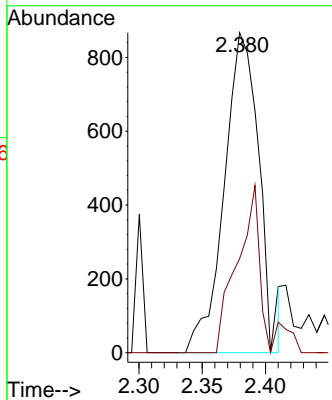
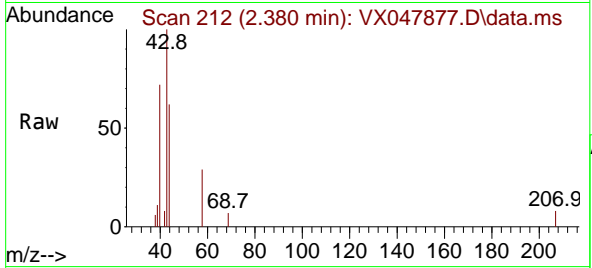




#16
 Acetone
 Concen: 1.506 ug/l
 RT: 2.380 min Scan# 211
 Delta R.T. 0.006 min
 Lab File: VX047877.D
 Acq: 29 Sep 2025 12:52

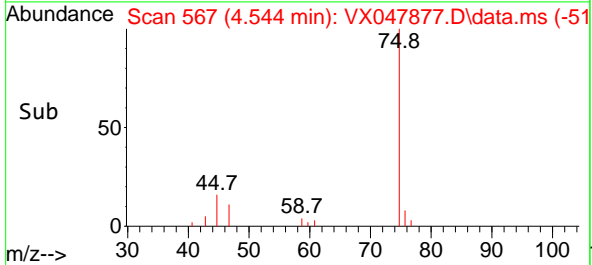
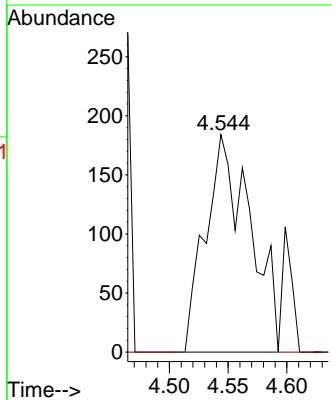
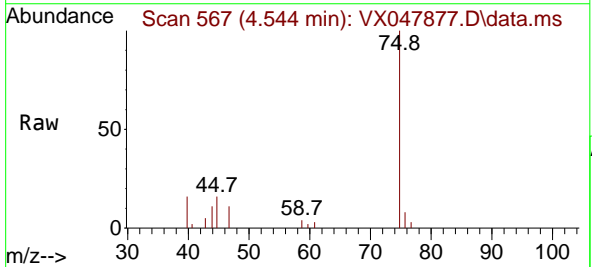
Instrument : MSVOA_X
 ClientSampleId : RW9-MW01S-20250918

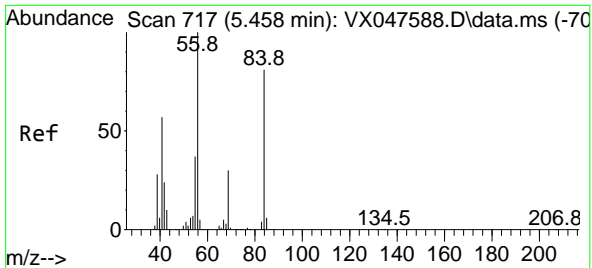
Tgt Ion: 43 Resp: 1669
 Ion Ratio Lower Upper
 43 100
 58 29.4 23.4 35.0



#25
 2-Butanone
 Concen: 0.351 ug/l
 RT: 4.544 min Scan# 567
 Delta R.T. 0.006 min
 Lab File: VX047877.D
 Acq: 29 Sep 2025 12:52

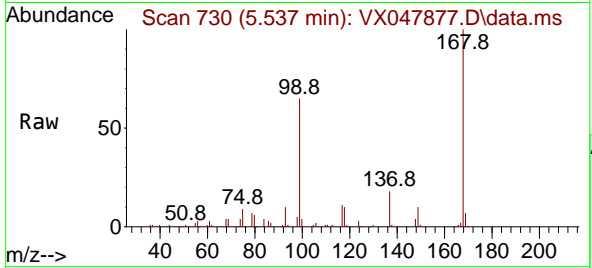
Tgt Ion: 43 Resp: 485
 Ion Ratio Lower Upper
 43 100
 72 0.0 20.1 30.1#





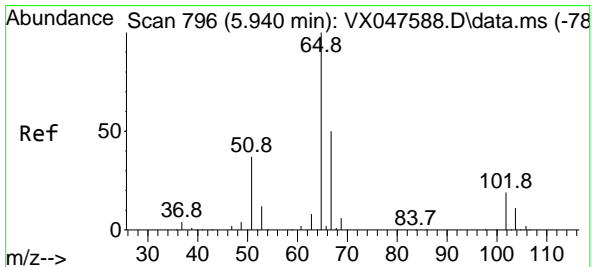
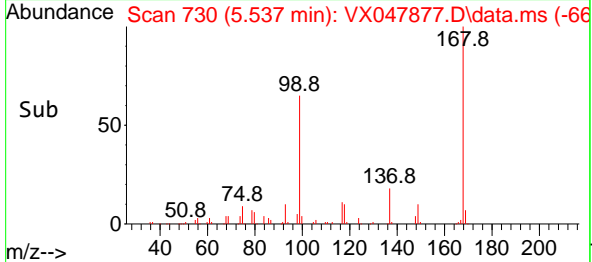
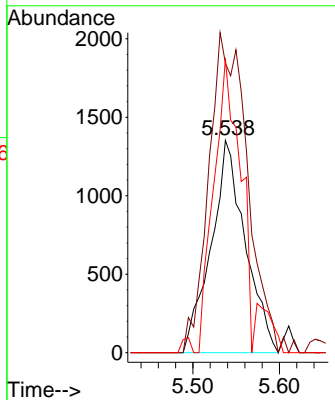
#31
 Cyclohexane
 Concen: 1.100 ug/l
 RT: 5.537 min Scan# 717
 Delta R.T. 0.079 min
 Lab File: VX047877.D
 Acq: 29 Sep 2025 12:52

Instrument : MSVOA_X
 ClientSampleId : RW9-MW01S-20250918



Tgt Ion: 56 Resp: 3706

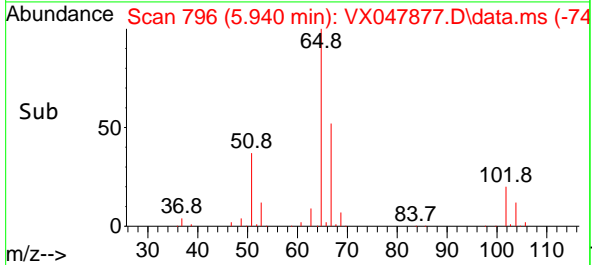
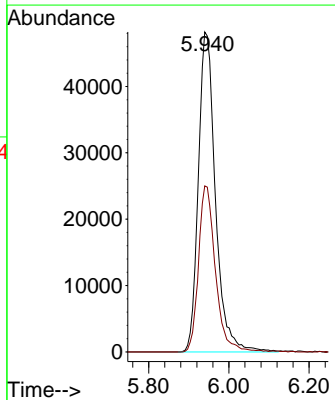
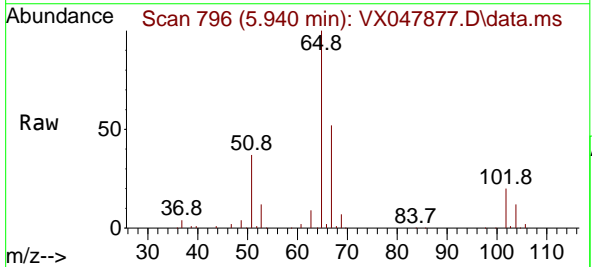
Ion	Ratio	Lower	Upper
56	100		
69	136.3	23.8	35.8#
84	138.6	64.6	97.0#

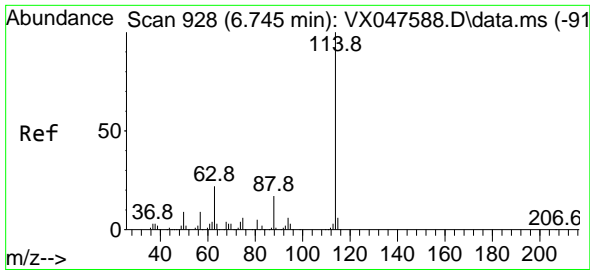


#33
 1,2-Dichloroethane-d4
 Concen: 56.098 ug/l
 RT: 5.940 min Scan# 796
 Delta R.T. -0.000 min
 Lab File: VX047877.D
 Acq: 29 Sep 2025 12:52

Tgt Ion: 65 Resp: 142972

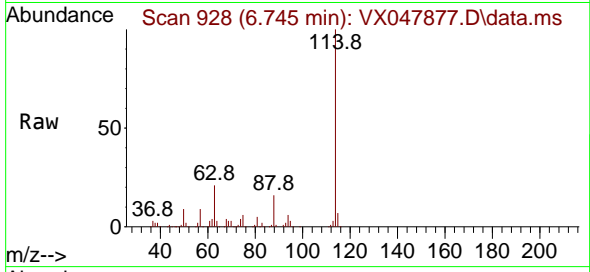
Ion	Ratio	Lower	Upper
65	100		
67	51.4	0.0	103.0



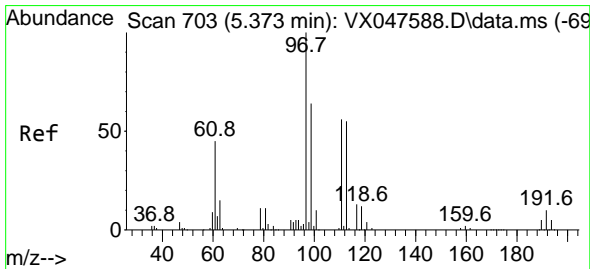
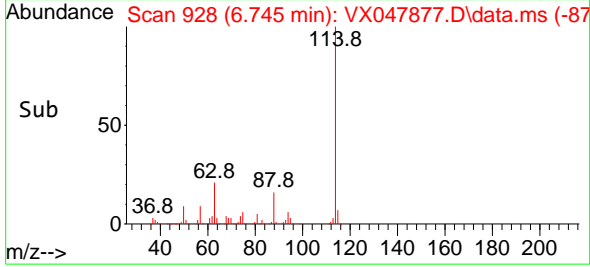
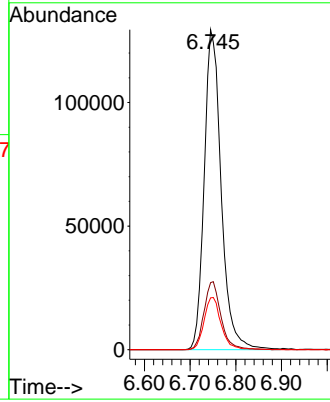


#34
 1,4-Difluorobenzene
 Concen: 50.000 ug/l
 RT: 6.745 min Scan# 91
 Delta R.T. -0.000 min
 Lab File: VX047877.D
 Acq: 29 Sep 2025 12:52

Instrument : MSVOA_X
 ClientSampleId : RW9-MW01S-20250918

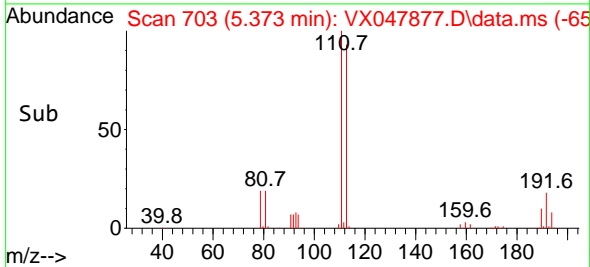
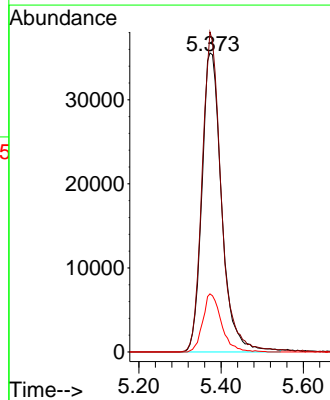
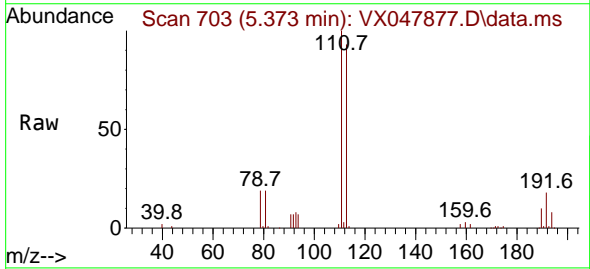


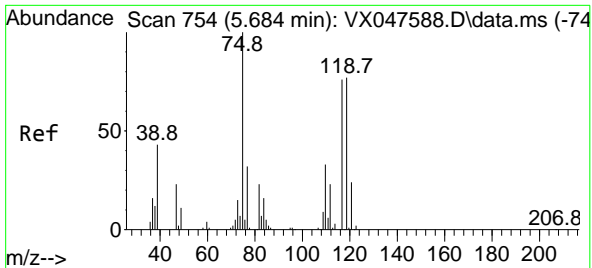
Tgt Ion:114 Resp: 334305
 Ion Ratio Lower Upper
 114 100
 63 20.9 0.0 44.0
 88 16.2 0.0 34.2



#35
 Dibromofluoromethane
 Concen: 52.928 ug/l
 RT: 5.373 min Scan# 703
 Delta R.T. -0.000 min
 Lab File: VX047877.D
 Acq: 29 Sep 2025 12:52

Tgt Ion:113 Resp: 118667
 Ion Ratio Lower Upper
 113 100
 111 103.8 80.9 121.3
 192 18.4 14.2 21.4



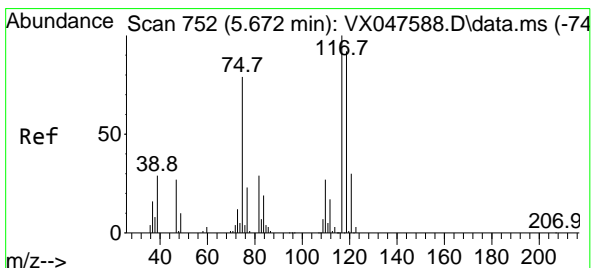
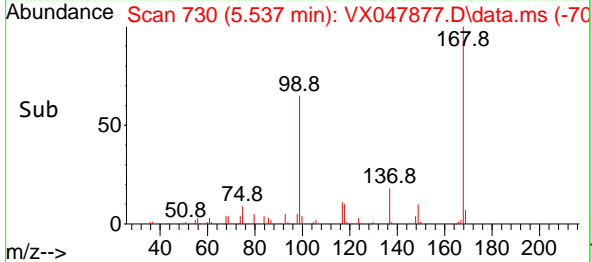
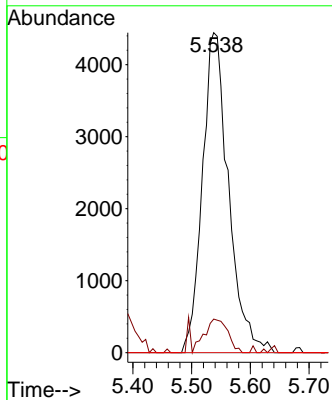
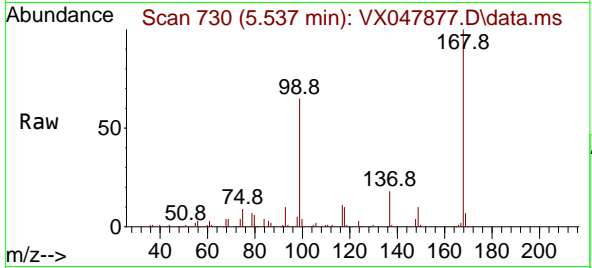


#36
 1,1-Dichloropropene
 Concen: 4.200 ug/l
 RT: 5.537 min Scan# 710
 Delta R.T. -0.147 min
 Lab File: VX047877.D
 Acq: 29 Sep 2025 12:52

Instrument : MSVOA_X
 ClientSampleId : RW9-MW01S-20250918

Tgt Ion: 75 Resp: 13760

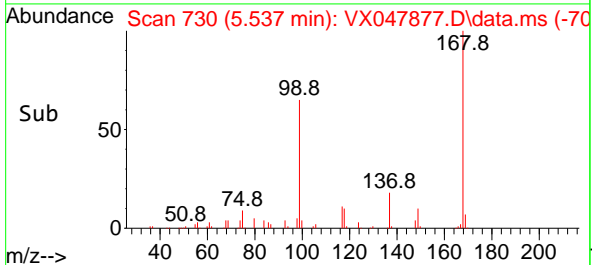
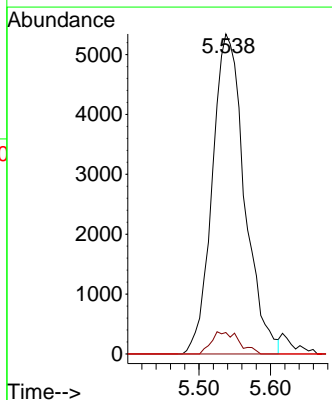
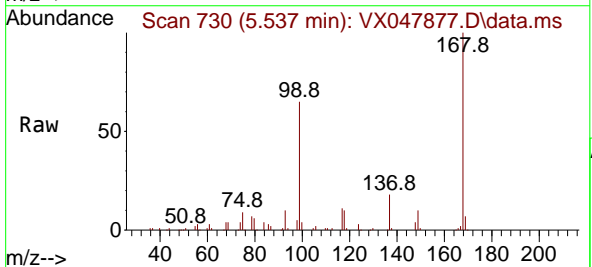
Ion	Ratio	Lower	Upper
75	100		
110	9.0	16.7	50.1#
77	0.0	24.3	36.5#

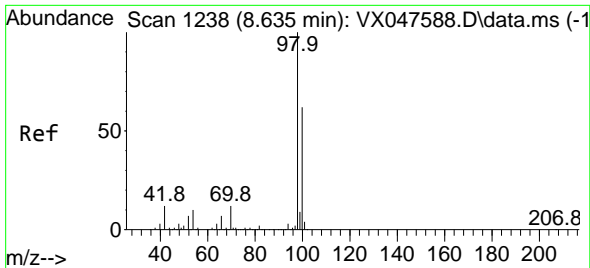


#38
 Carbon Tetrachloride
 Concen: 4.708 ug/l
 RT: 5.537 min Scan# 730
 Delta R.T. -0.134 min
 Lab File: VX047877.D
 Acq: 29 Sep 2025 12:52

Tgt Ion: 117 Resp: 16757

Ion	Ratio	Lower	Upper
117	100		
119	6.7	73.4	110.2#
121	0.0	23.8	35.6#

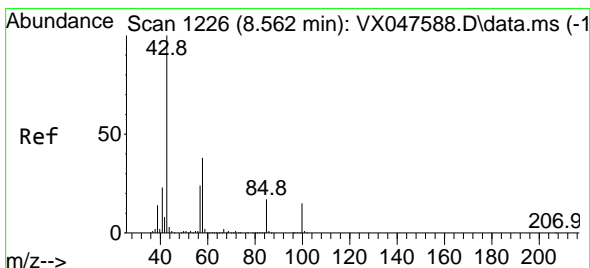
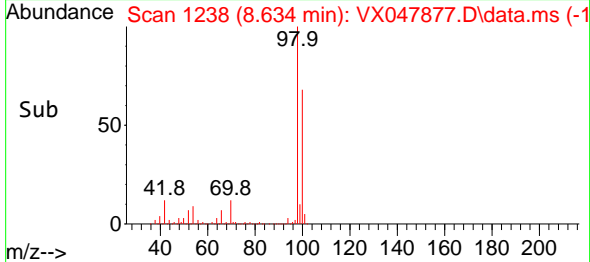
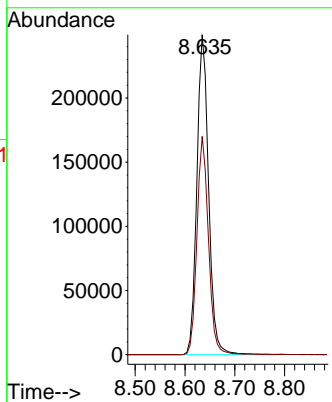
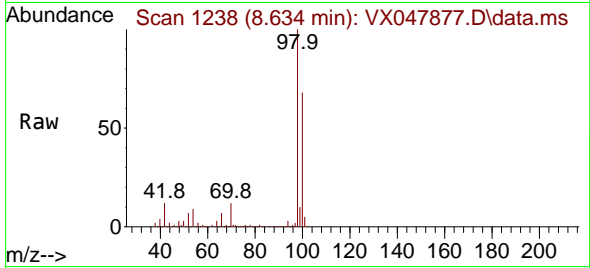




#50
 Toluene-d8
 Concen: 52.500 ug/l
 RT: 8.634 min Scan# 1238
 Delta R.T. -0.000 min
 Lab File: VX047877.D
 Acq: 29 Sep 2025 12:52

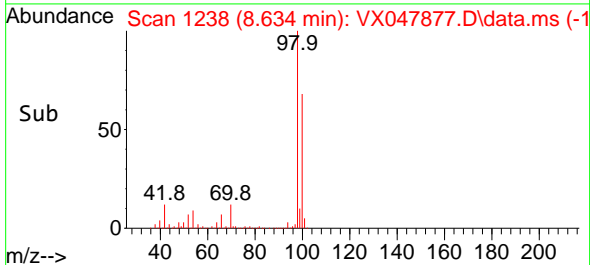
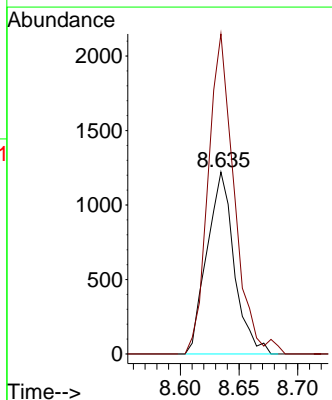
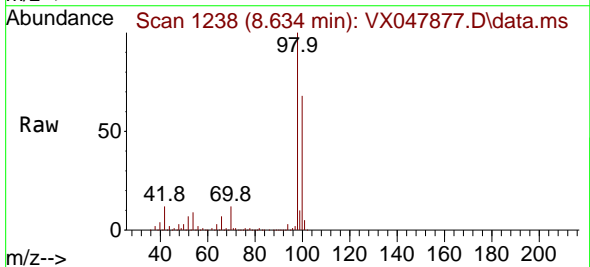
Instrument : MSVOA_X
 ClientSampleId : RW9-MW01S-20250918

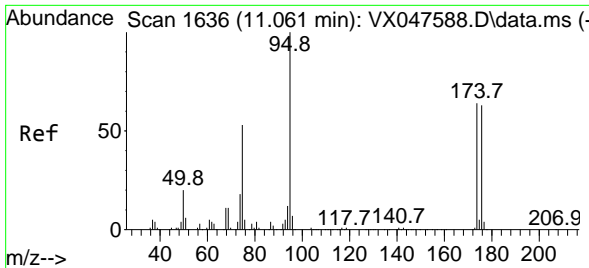
Tgt Ion: 98 Resp: 407285
 Ion Ratio Lower Upper
 98 100
 100 66.8 53.0 79.4



#51
 4-Methyl-2-Pentanone
 Concen: 0.619 ug/l
 RT: 8.634 min Scan# 1238
 Delta R.T. 0.073 min
 Lab File: VX047877.D
 Acq: 29 Sep 2025 12:52

Tgt Ion: 43 Resp: 1974
 Ion Ratio Lower Upper
 43 100
 58 168.2 30.3 45.5#



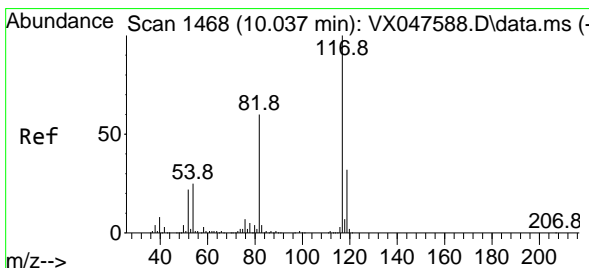
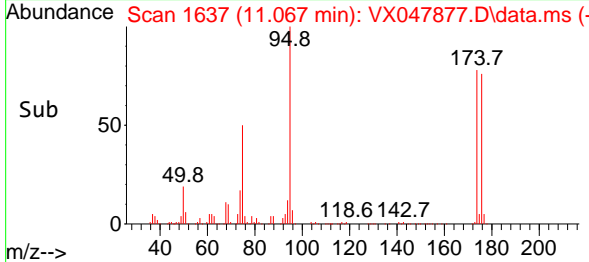
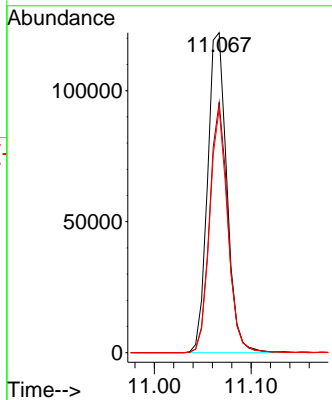
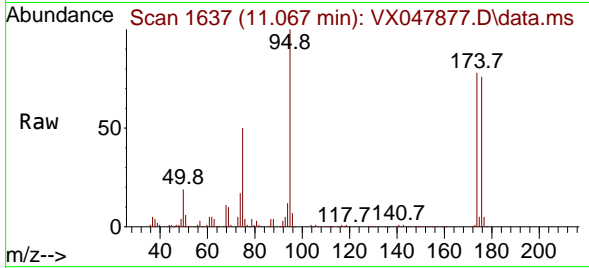


#62
 4-Bromofluorobenzene
 Concen: 57.337 ug/l
 RT: 11.067 min Scan# 11
 Delta R.T. 0.006 min
 Lab File: VX047877.D
 Acq: 29 Sep 2025 12:52

Instrument : MSVOA_X
 ClientSampleId : RW9-MW01S-20250918

Tgt Ion: 95 Resp: 168815

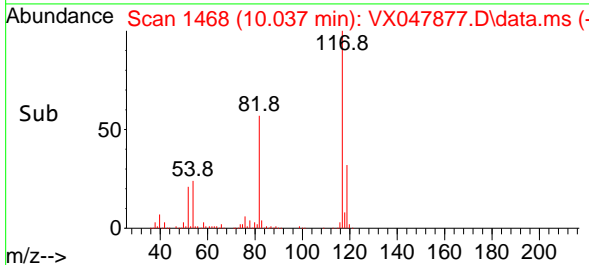
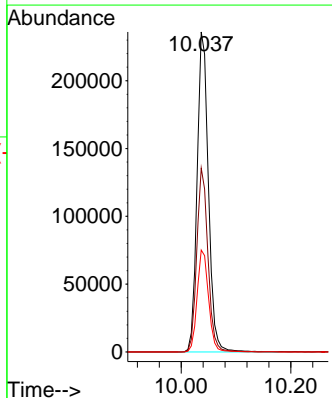
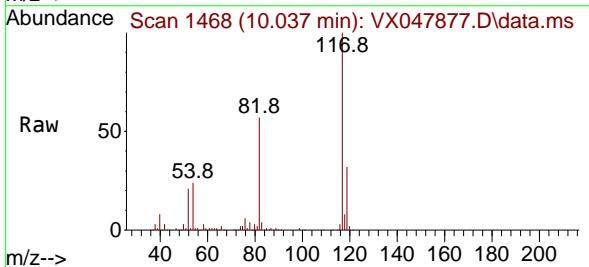
Ion	Ratio	Lower	Upper
95	100		
174	74.6	0.0	141.6
176	71.5	0.0	138.4

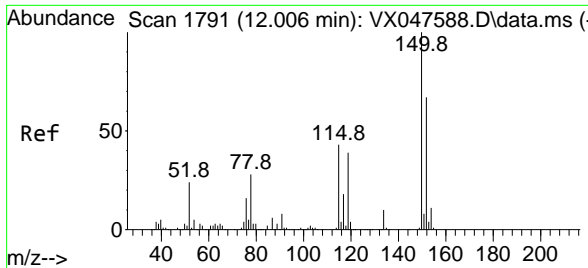


#63
 Chlorobenzene-d5
 Concen: 50.000 ug/l
 RT: 10.037 min Scan# 1468
 Delta R.T. -0.000 min
 Lab File: VX047877.D
 Acq: 29 Sep 2025 12:52

Tgt Ion: 117 Resp: 338507

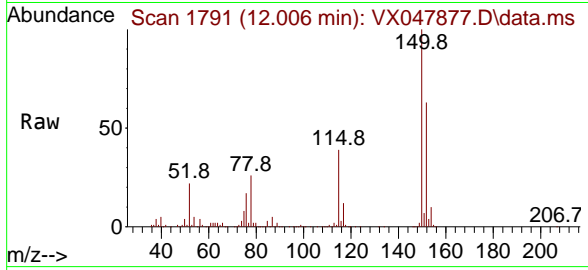
Ion	Ratio	Lower	Upper
117	100		
82	57.4	47.8	71.6
119	31.8	25.2	37.8



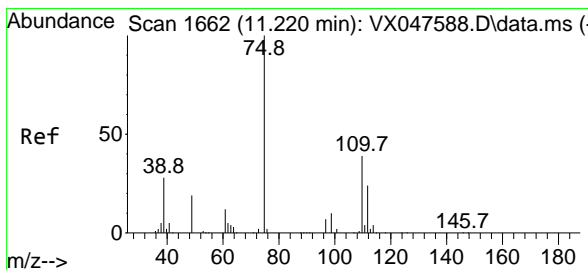
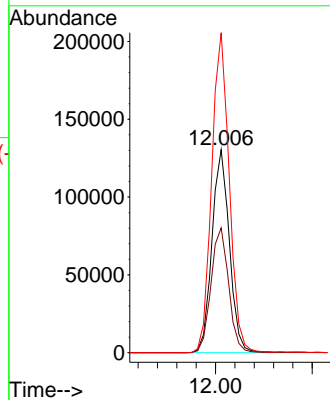
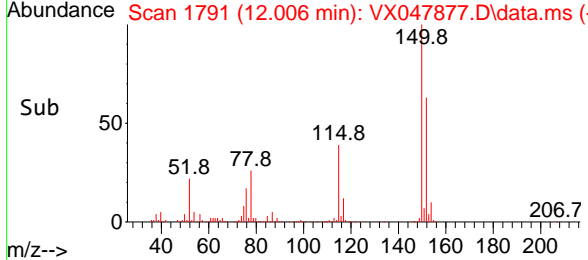


#72
 1,4-Dichlorobenzene-d4
 Concen: 50.000 ug/l
 RT: 12.006 min Scan# 11
 Delta R.T. -0.000 min
 Lab File: VX047877.D
 Acq: 29 Sep 2025 12:52

Instrument : MSVOA_X
 ClientSampleId : RW9-MW01S-20250918

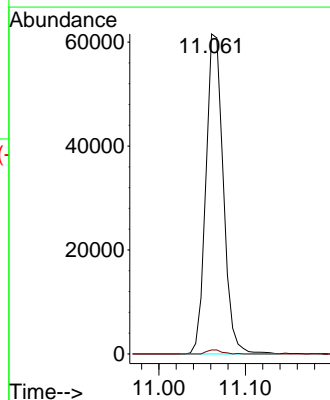
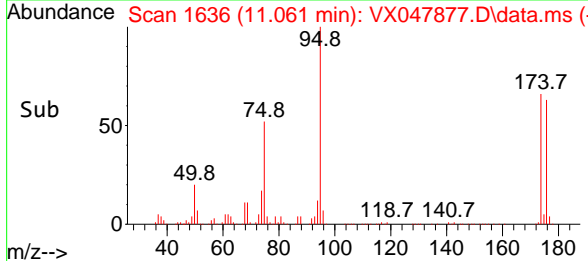
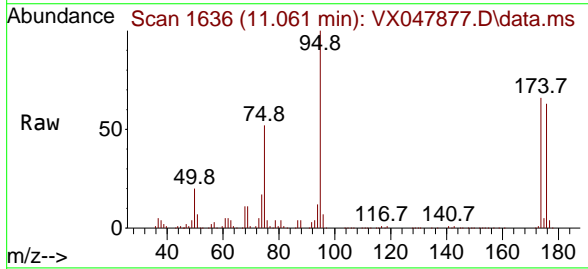


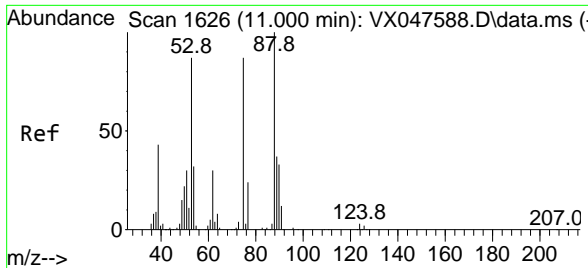
Tgt Ion:152 Resp: 163316
 Ion Ratio Lower Upper
 152 100
 115 62.6 44.9 134.5
 150 158.6 0.0 352.0



#76
 1,2,3-Trichloropropane
 Concen: 25.956 ug/l
 RT: 11.061 min Scan# 1636
 Delta R.T. -0.159 min
 Lab File: VX047877.D
 Acq: 29 Sep 2025 12:52

Tgt Ion: 75 Resp: 85827
 Ion Ratio Lower Upper
 75 100
 77 1.1 18.8 56.4#





#81
 trans-1,4-Dichloro-2-butene
 Concen: 66.191 ug/l
 RT: 11.061 min Scan# 1
 Delta R.T. 0.061 min
 Lab File: VX047877.D
 Acq: 29 Sep 2025 12:52

Instrument :
 MSVOA_X
 ClientSampleId :
 RW9-MW01S-20250918

Tgt Ion: 75 Resp: 85827
 Ion Ratio Lower Upper
 75 100
 53 0.0 83.4 125.2#
 89 0.0 36.3 54.5#

