

Data Path : Z:\voasrv\HPCHEM1\MSVOA_X\Data\VX092925\
 Data File : VX047878.D
 Acq On : 29 Sep 2025 13:13
 Operator : JC/MD
 Sample : Q3156-19
 Misc : 5.0mL/MSVOA_X/WATER
 ALS Vial : 12 Sample Multiplier: 1

Instrument :
 MSVOA_X
 ClientSampleId :
 TT191D1-20250918

Quant Time: Sep 30 01:19:36 2025
 Quant Method : Z:\voasrv\HPCHEM1\MSVOA_X\Method\82X091625W.M
 Quant Title : SW846 8260
 QLast Update : Wed Sep 17 06:39:58 2025
 Response via : Initial Calibration

Compound	R.T.	QIon	Response	Conc	Units	Dev(Min)

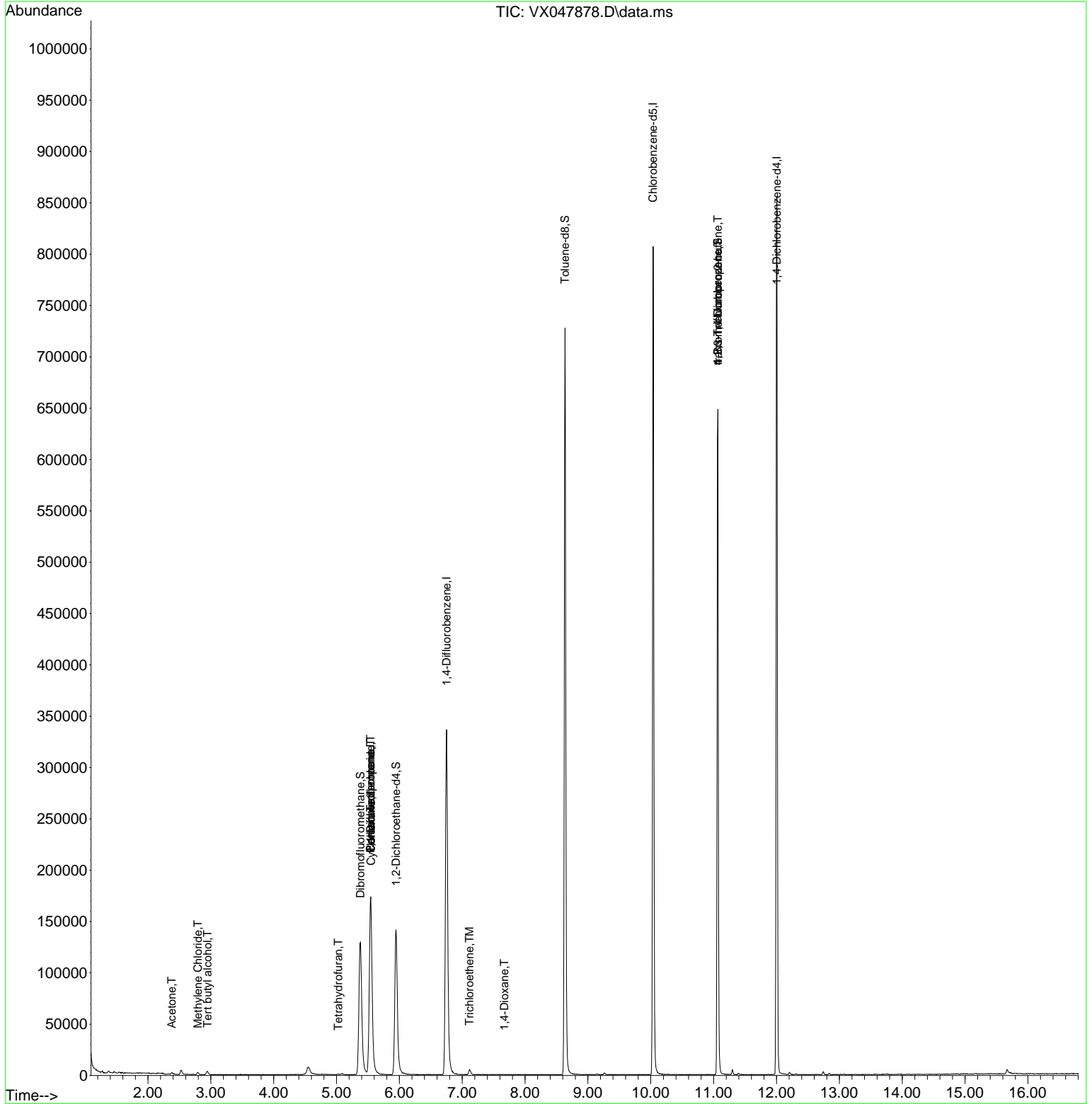
Internal Standards						
1) Pentafluorobenzene	5.544	168	174530	50.000	ug/l	0.00
34) 1,4-Difluorobenzene	6.751	114	361493	50.000	ug/l	0.00
63) Chlorobenzene-d5	10.037	117	366051	50.000	ug/l	0.00
72) 1,4-Dichlorobenzene-d4	12.006	152	179524	50.000	ug/l	0.00
System Monitoring Compounds						
33) 1,2-Dichloroethane-d4	5.946	65	149648	53.867	ug/l	0.00
Spiked Amount	50.000	Range 78 - 117	Recovery	=	107.740%	
35) Dibromofluoromethane	5.379	113	127534	52.605	ug/l	0.00
Spiked Amount	50.000	Range 75 - 124	Recovery	=	105.220%	
50) Toluene-d8	8.635	98	441646	52.647	ug/l	0.00
Spiked Amount	50.000	Range 92 - 112	Recovery	=	105.300%	
62) 4-Bromofluorobenzene	11.067	95	183690	57.697	ug/l	0.00
Spiked Amount	50.000	Range 83 - 123	Recovery	=	115.400%	
Target Compounds						
						Qvalue
11) Tert butyl alcohol	2.947	59	985	3.184	ug/l #	72
16) Acetone	2.380	43	2412	1.997	ug/l #	63
20) Methylene Chloride	2.794	84	1050	0.411	ug/l #	74
29) Tetrahydrofuran	5.026	42	209	0.231	ug/l #	54
31) Cyclohexane	5.550	56	4129	1.125	ug/l #	1
36) 1,1-Dichloropropene	5.544	75	15184	4.286	ug/l #	51
38) Carbon Tetrachloride	5.544	117	18242	4.739	ug/l #	19
44) Trichloroethene	7.117	130	2116	0.813	ug/l	82
49) 1,4-Dioxane	7.671	88	181	5.780	ug/l #	44
76) 1,2,3-Trichloropropane	11.067	75	96093	26.437	ug/l #	40
81) trans-1,4-Dichloro-2-b...	11.067	75	96093	67.418	ug/l #	8

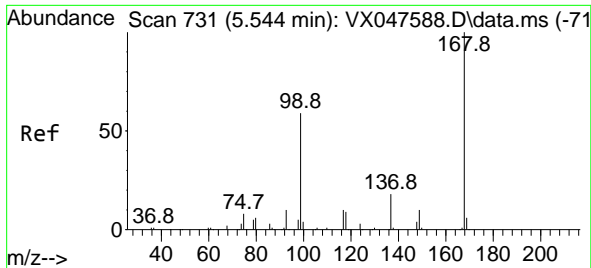
(#) = qualifier out of range (m) = manual integration (+) = signals summed

Data Path : Z:\voasrv\HPCHEM1\MSVOA_X\Data\VX092925\
 Data File : VX047878.D
 Acq On : 29 Sep 2025 13:13
 Operator : JC/MD
 Sample : Q3156-19
 Misc : 5.0mL/MSVOA_X/WATER
 ALS Vial : 12 Sample Multiplier: 1

Instrument :
 MSVOA_X
ClientSampleId :
 TT191D1-20250918

Quant Time: Sep 30 01:19:36 2025
 Quant Method : Z:\voasrv\HPCHEM1\MSVOA_X\Method\82X091625W.M
 Quant Title : SW846 8260
 QLast Update : Wed Sep 17 06:39:58 2025
 Response via : Initial Calibration

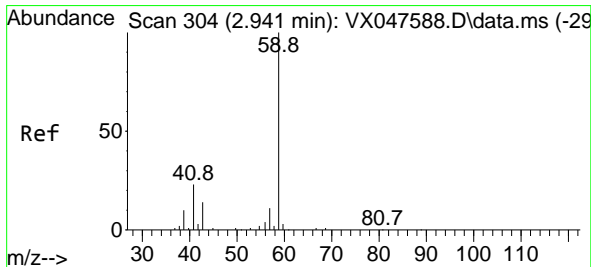
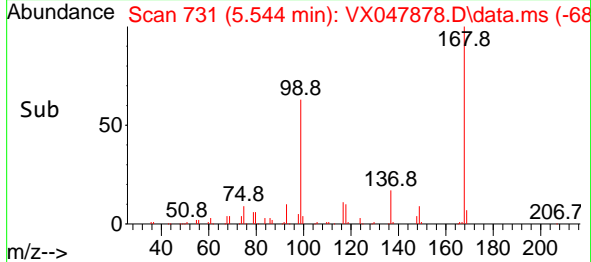
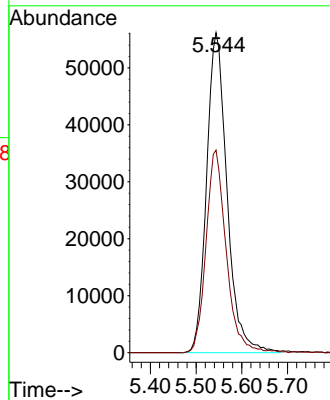
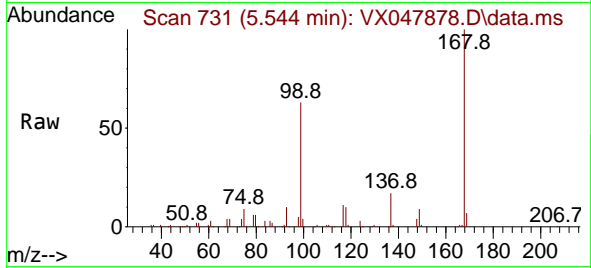




#1
 Pentafluorobenzene
 Concen: 50.000 ug/l
 RT: 5.544 min Scan# 71
 Delta R.T. -0.000 min
 Lab File: VX047878.D
 Acq: 29 Sep 2025 13:13

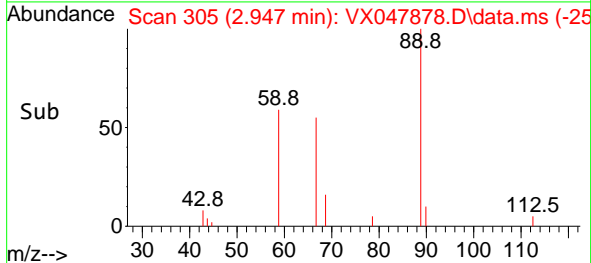
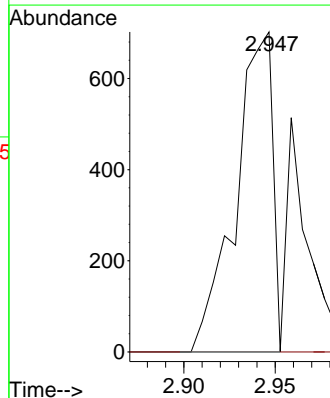
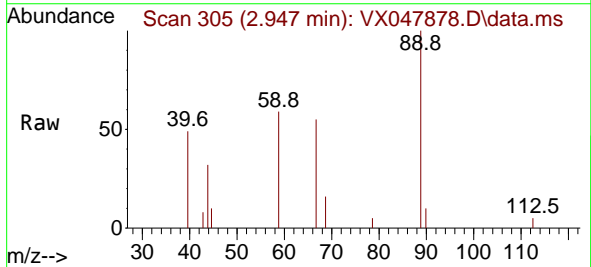
Instrument :
 MSVOA_X
 ClientSampleId :
 TT191D1-20250918

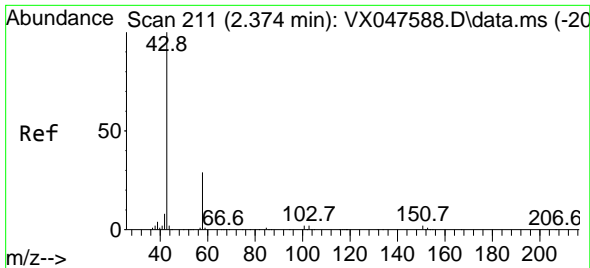
Tgt Ion:168 Resp: 174530
 Ion Ratio Lower Upper
 168 100
 99 63.3 48.8 73.2



#11
 Tert butyl alcohol
 Concen: 3.184 ug/l
 RT: 2.947 min Scan# 305
 Delta R.T. 0.006 min
 Lab File: VX047878.D
 Acq: 29 Sep 2025 13:13

Tgt Ion: 59 Resp: 985
 Ion Ratio Lower Upper
 59 100
 57 0.0 8.3 12.5#

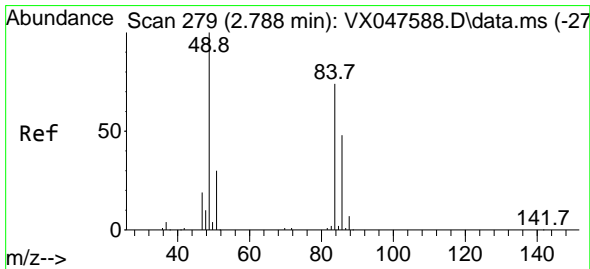
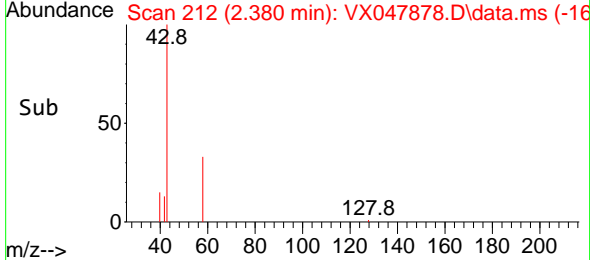
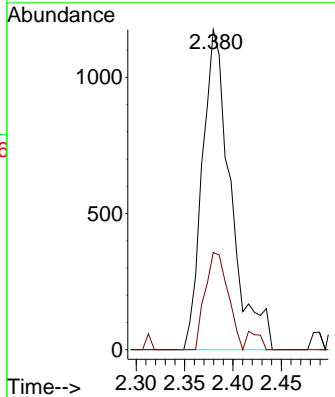
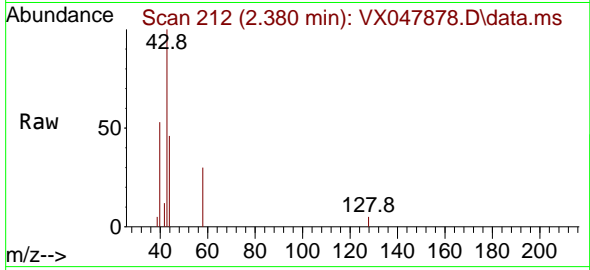




#16
 Acetone
 Concen: 1.997 ug/l
 RT: 2.380 min Scan# 211
 Delta R.T. 0.006 min
 Lab File: VX047878.D
 Acq: 29 Sep 2025 13:13

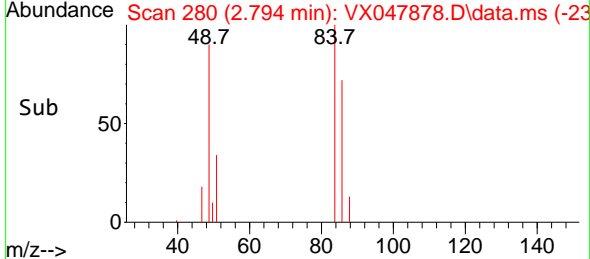
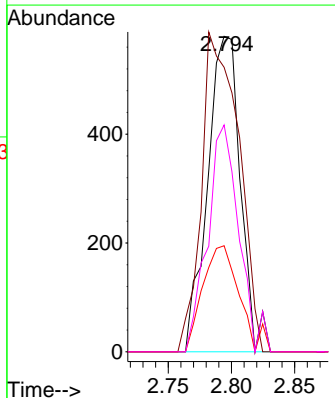
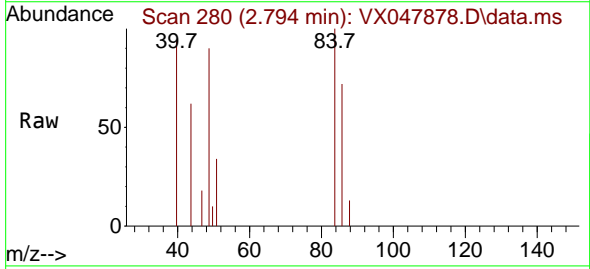
Instrument : MSVOA_X
 ClientSampleId : TT191D1-20250918

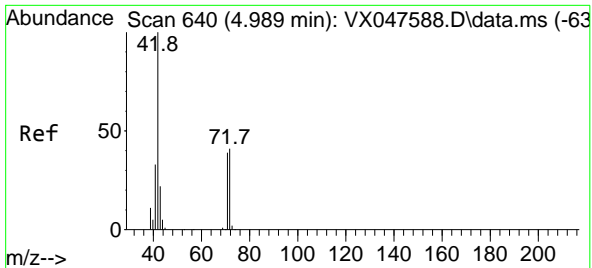
Tgt Ion: 43 Resp: 2412
 Ion Ratio Lower Upper
 43 100
 58 49.0 23.4 35.0#



#20
 Methylene Chloride
 Concen: 0.411 ug/l
 RT: 2.794 min Scan# 280
 Delta R.T. 0.006 min
 Lab File: VX047878.D
 Acq: 29 Sep 2025 13:13

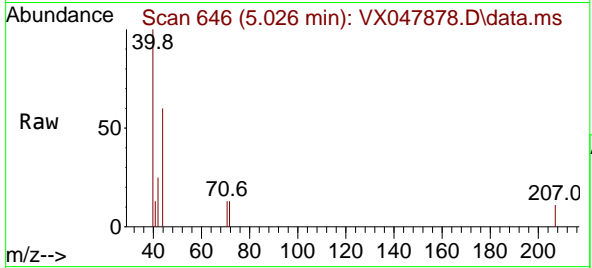
Tgt Ion: 84 Resp: 1050
 Ion Ratio Lower Upper
 84 100
 49 90.2 108.6 162.8#
 51 33.6 32.6 48.8
 86 71.9 52.0 78.0



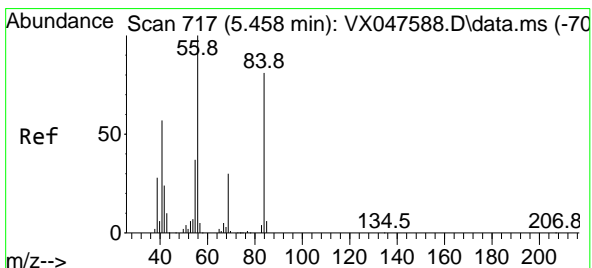
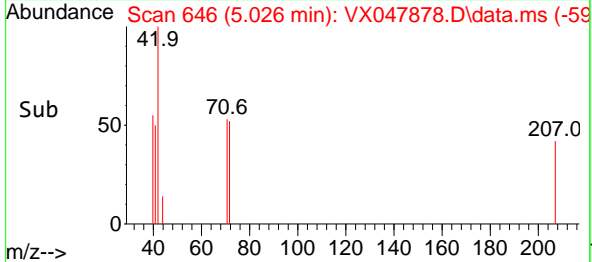
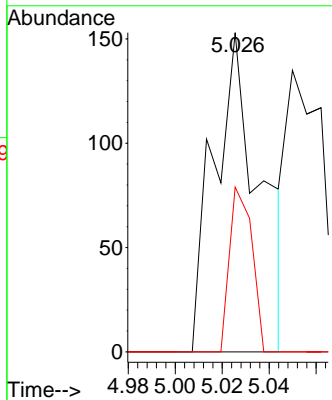


#29
 Tetrahydrofuran
 Concen: 0.231 ug/l
 RT: 5.026 min Scan# 640
 Delta R.T. 0.037 min
 Lab File: VX047878.D
 Acq: 29 Sep 2025 13:13

Instrument : MSVOA_X
 ClientSampleId : TT191D1-20250918

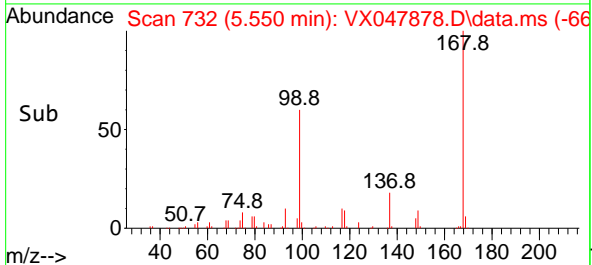
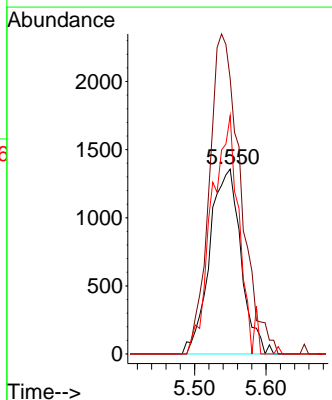
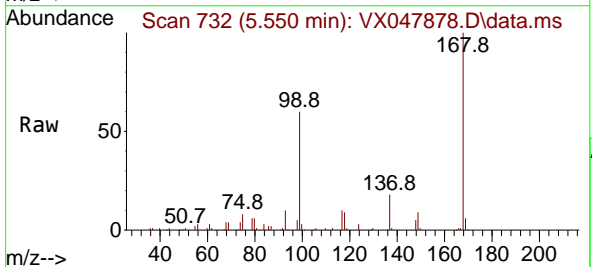


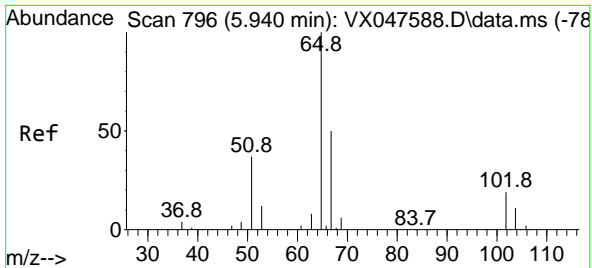
Tgt Ion: 42 Resp: 209
 Ion Ratio Lower Upper
 42 100
 72 0.0 34.2 51.2#
 71 24.9 31.9 47.9#



#31
 Cyclohexane
 Concen: 1.125 ug/l
 RT: 5.550 min Scan# 732
 Delta R.T. 0.091 min
 Lab File: VX047878.D
 Acq: 29 Sep 2025 13:13

Tgt Ion: 56 Resp: 4129
 Ion Ratio Lower Upper
 56 100
 69 148.9 23.8 35.8#
 84 129.0 64.6 97.0#

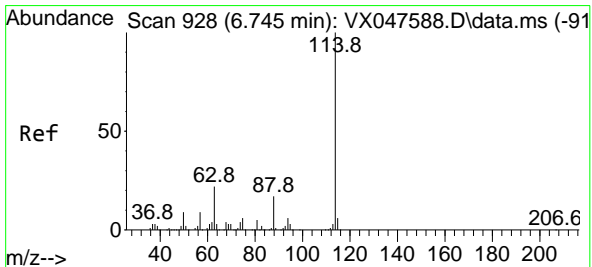
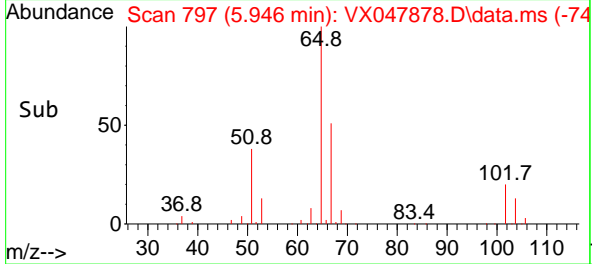
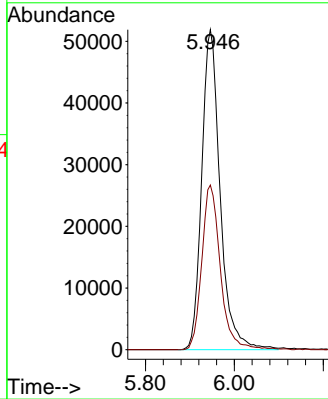
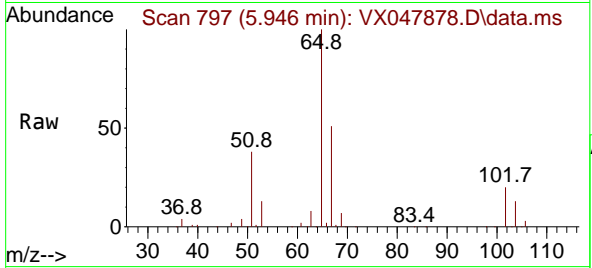




#33
 1,2-Dichloroethane-d4
 Concen: 53.867 ug/l
 RT: 5.946 min Scan# 796
 Delta R.T. 0.006 min
 Lab File: VX047878.D
 Acq: 29 Sep 2025 13:13

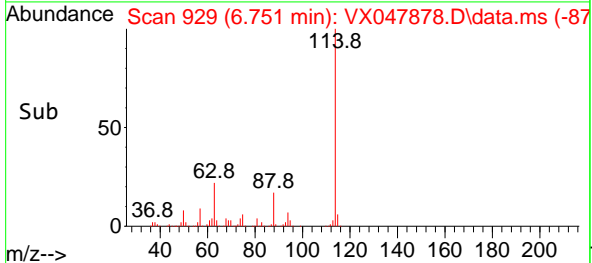
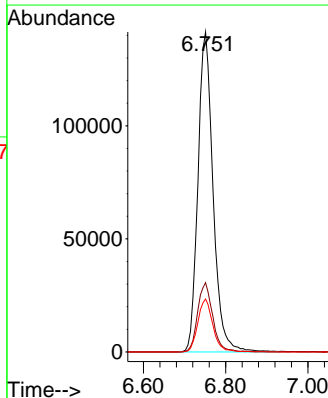
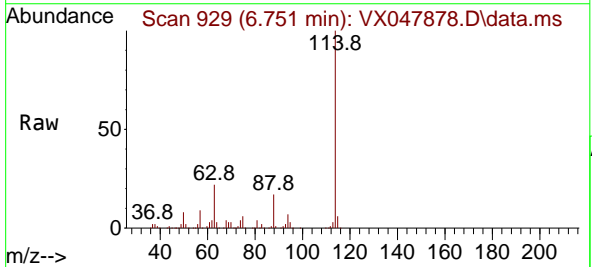
Instrument : MSVOA_X
 ClientSampleId : TT191D1-20250918

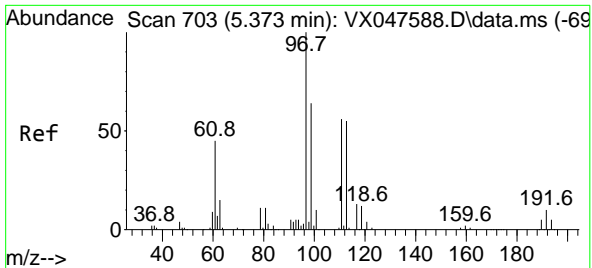
Tgt Ion: 65 Resp: 149648
 Ion Ratio Lower Upper
 65 100
 67 52.0 0.0 103.0



#34
 1,4-Difluorobenzene
 Concen: 50.000 ug/l
 RT: 6.751 min Scan# 929
 Delta R.T. 0.006 min
 Lab File: VX047878.D
 Acq: 29 Sep 2025 13:13

Tgt Ion: 114 Resp: 361493
 Ion Ratio Lower Upper
 114 100
 63 21.7 0.0 44.0
 88 16.6 0.0 34.2

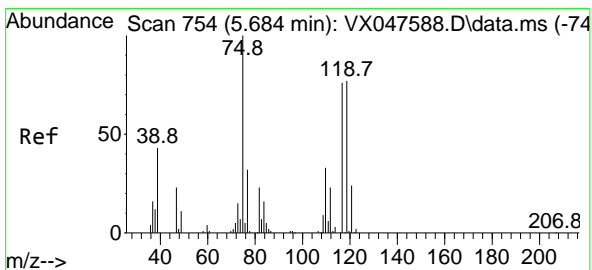
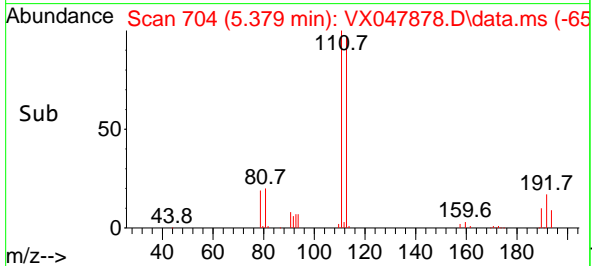
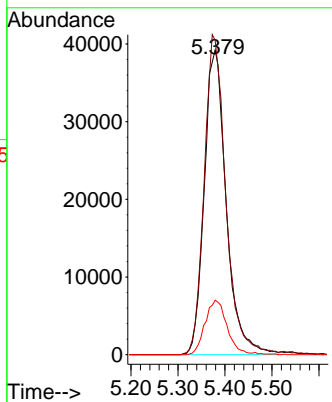
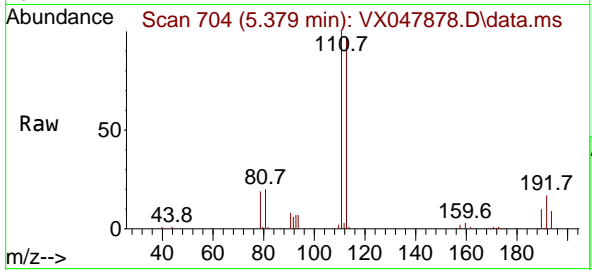




#35
 Dibromofluoromethane
 Concen: 52.605 ug/l
 RT: 5.379 min Scan# 703
 Delta R.T. 0.006 min
 Lab File: VX047878.D
 Acq: 29 Sep 2025 13:13

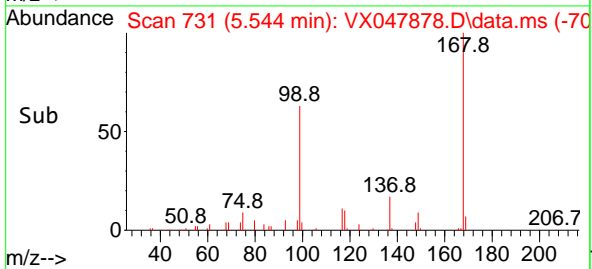
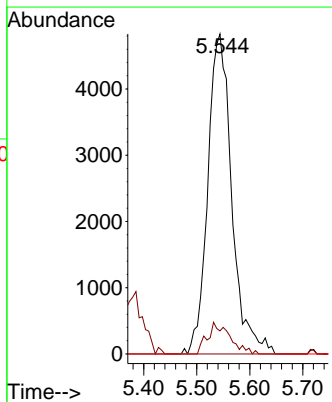
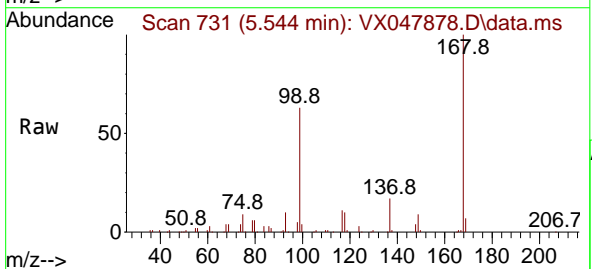
Instrument : MSVOA_X
 ClientSampleId : TT191D1-20250918

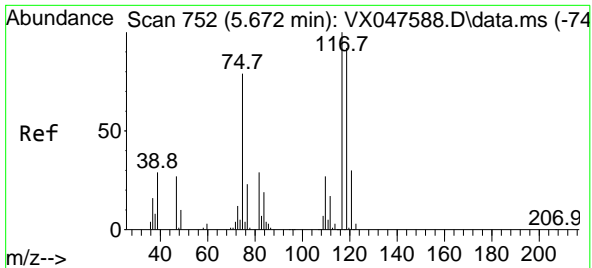
Tgt Ion	Resp	Lower	Upper
113	127534		
113	100		
111	103.0	80.9	121.3
192	18.0	14.2	21.4



#36
 1,1-Dichloropropene
 Concen: 4.286 ug/l
 RT: 5.544 min Scan# 731
 Delta R.T. -0.140 min
 Lab File: VX047878.D
 Acq: 29 Sep 2025 13:13

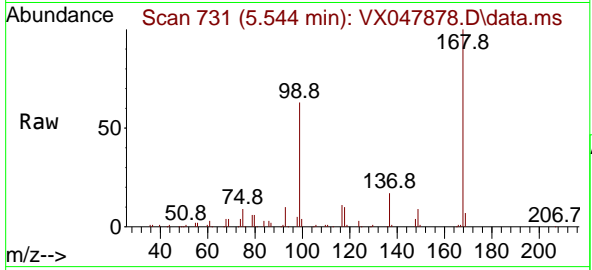
Tgt Ion	Resp	Lower	Upper
75	15184		
75	100		
110	9.2	16.7	50.1#
77	0.0	24.3	36.5#



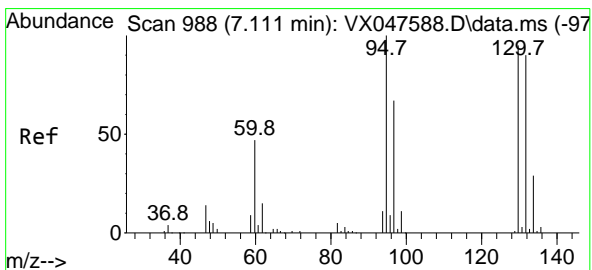
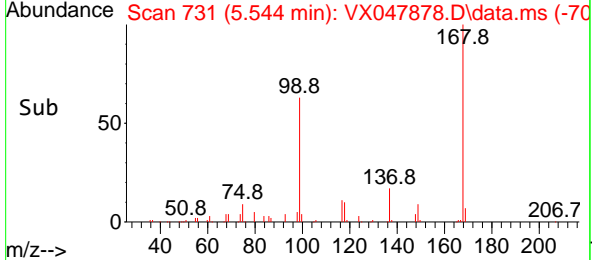
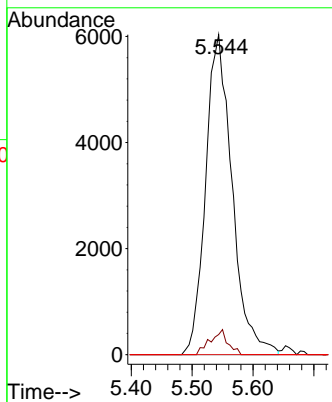


#38
 Carbon Tetrachloride
 Concen: 4.739 ug/l
 RT: 5.544 min Scan# 711
 Delta R.T. -0.128 min
 Lab File: VX047878.D
 Acq: 29 Sep 2025 13:13

Instrument : MSVOA_X
 ClientSampleId : TT191D1-20250918

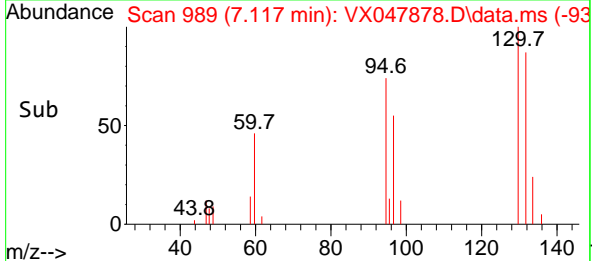
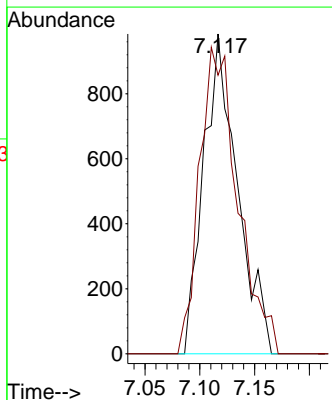
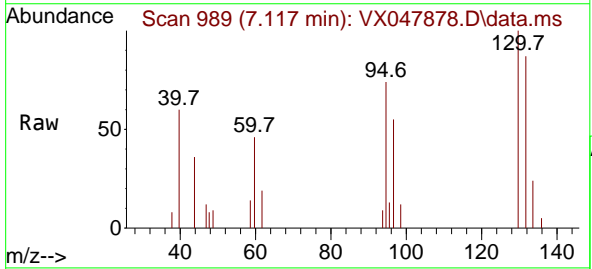


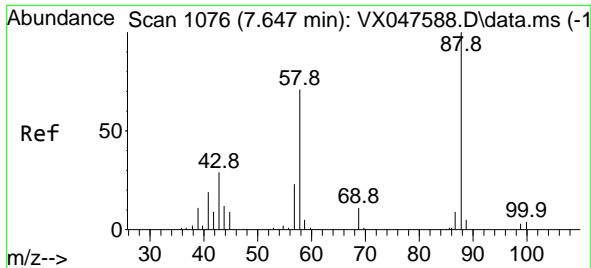
Tgt Ion:117 Resp: 18242
 Ion Ratio Lower Upper
 117 100
 119 6.3 73.4 110.2#
 121 0.0 23.8 35.6#



#44
 Trichloroethene
 Concen: 0.813 ug/l
 RT: 7.117 min Scan# 989
 Delta R.T. 0.006 min
 Lab File: VX047878.D
 Acq: 29 Sep 2025 13:13

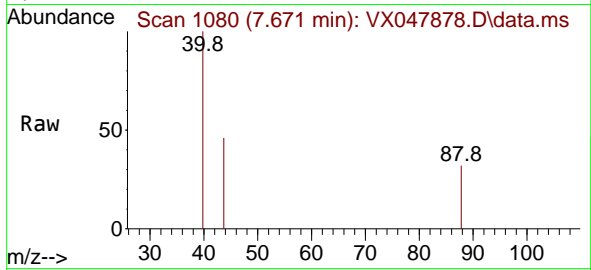
Tgt Ion:130 Resp: 2116
 Ion Ratio Lower Upper
 130 100
 95 87.1 0.0 210.8



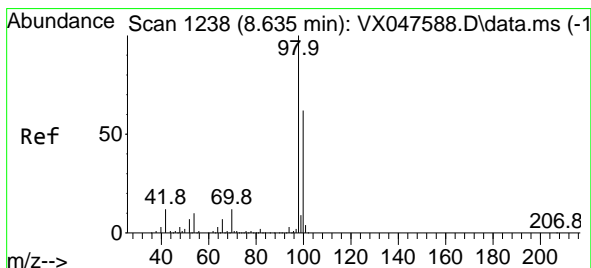
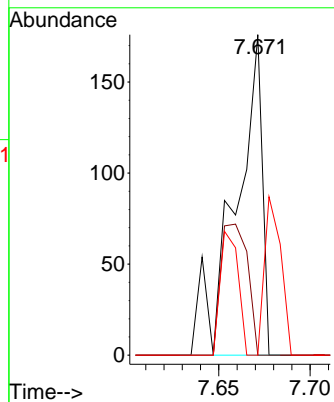
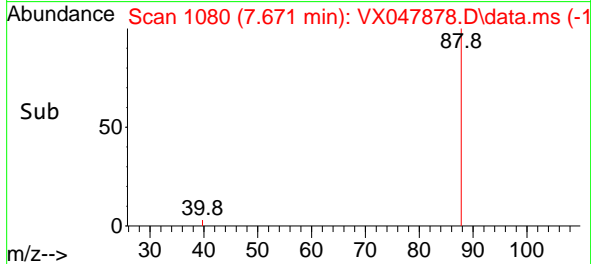


#49
 1,4-Dioxane
 Concen: 5.780 ug/l
 RT: 7.671 min Scan# 1076
 Delta R.T. 0.024 min
 Lab File: VX047878.D
 Acq: 29 Sep 2025 13:13

Instrument : MSVOA_X
 ClientSampleId : TT191D1-20250918

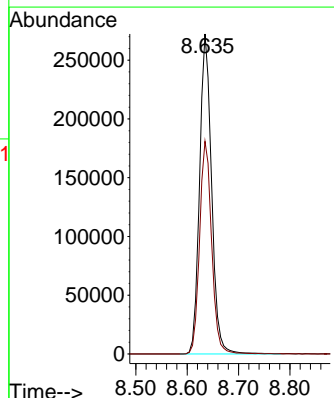
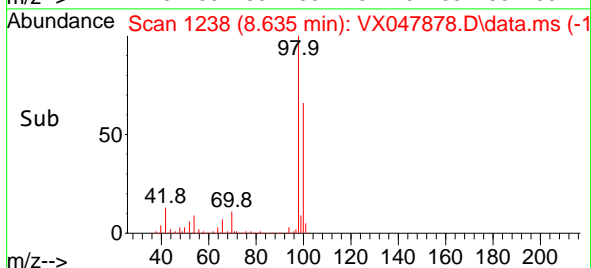
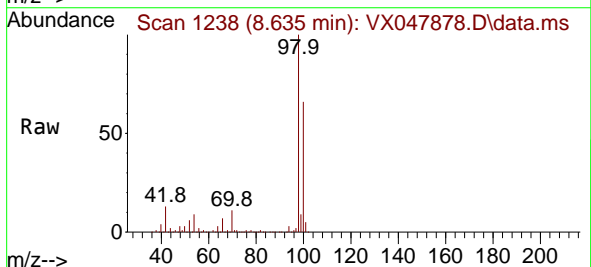


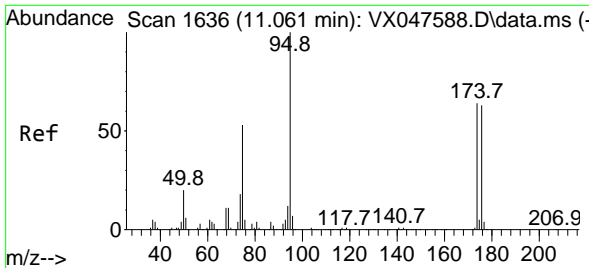
Tgt Ion: 88 Resp: 181
 Ion Ratio Lower Upper
 88 100
 43 0.0 30.2 45.2#
 58 29.8 59.5 89.3#



#50
 Toluene-d8
 Concen: 52.647 ug/l
 RT: 8.635 min Scan# 1238
 Delta R.T. -0.000 min
 Lab File: VX047878.D
 Acq: 29 Sep 2025 13:13

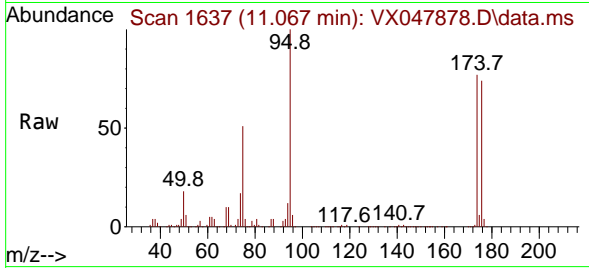
Tgt Ion: 98 Resp: 441646
 Ion Ratio Lower Upper
 98 100
 100 66.6 53.0 79.4



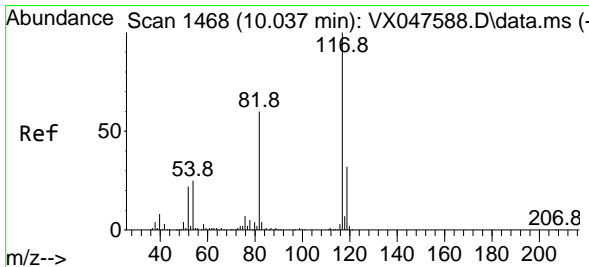
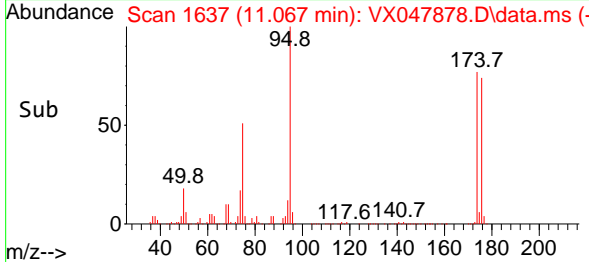
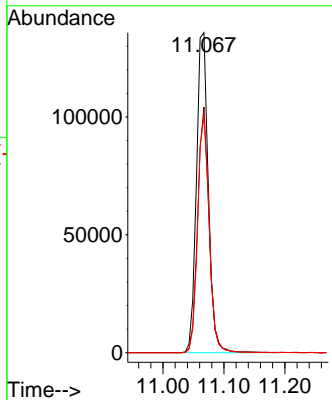


#62
 4-Bromofluorobenzene
 Concen: 57.697 ug/l
 RT: 11.067 min Scan# 11
 Delta R.T. 0.006 min
 Lab File: VX047878.D
 Acq: 29 Sep 2025 13:13

Instrument :
 MSVOA_X
 ClientSampleId :
 TT191D1-20250918

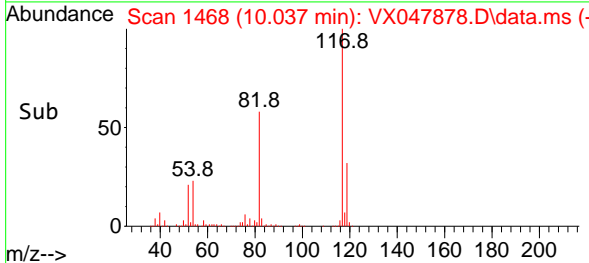
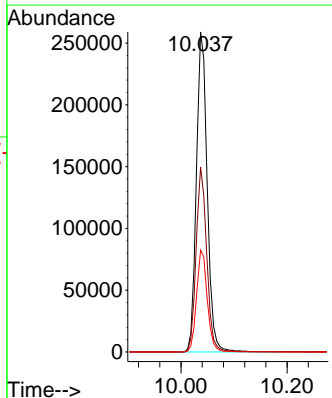
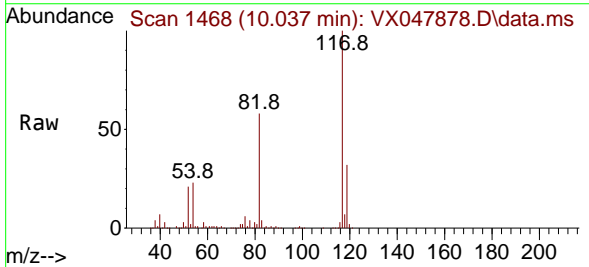


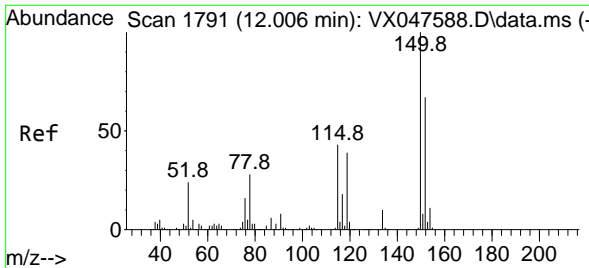
Tgt Ion: 95 Resp: 183690
 Ion Ratio Lower Upper
 95 100
 174 73.5 0.0 141.6
 176 71.8 0.0 138.4



#63
 Chlorobenzene-d5
 Concen: 50.000 ug/l
 RT: 10.037 min Scan# 1468
 Delta R.T. -0.000 min
 Lab File: VX047878.D
 Acq: 29 Sep 2025 13:13

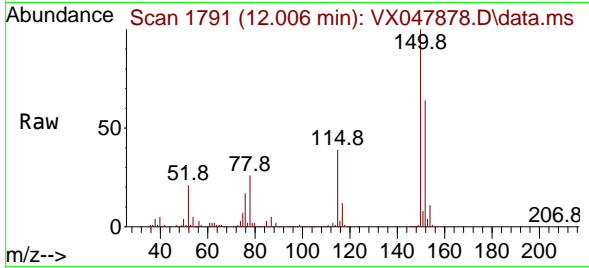
Tgt Ion: 117 Resp: 366051
 Ion Ratio Lower Upper
 117 100
 82 57.8 47.8 71.6
 119 31.9 25.2 37.8



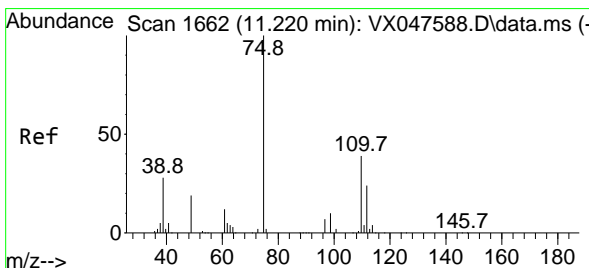
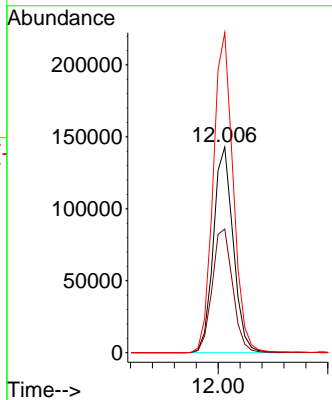
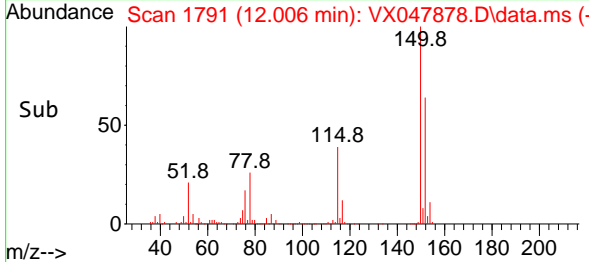


#72
 1,4-Dichlorobenzene-d4
 Concen: 50.000 ug/l
 RT: 12.006 min Scan# 11
 Delta R.T. -0.000 min
 Lab File: VX047878.D
 Acq: 29 Sep 2025 13:13

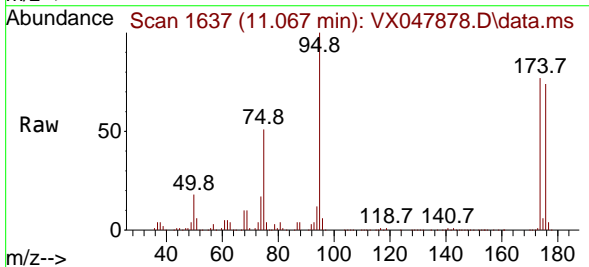
Instrument : MSVOA_X
 ClientSampleId : TT191D1-20250918



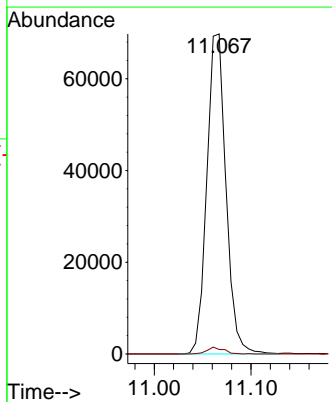
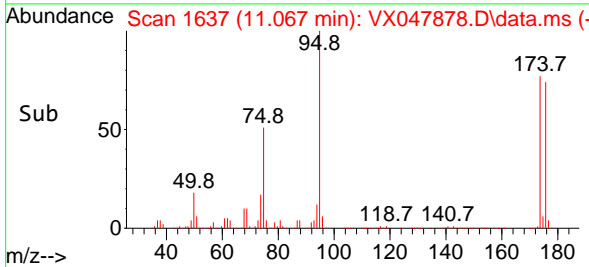
Tgt Ion:152 Resp: 179524
 Ion Ratio Lower Upper
 152 100
 115 62.5 44.9 134.5
 150 157.2 0.0 352.0

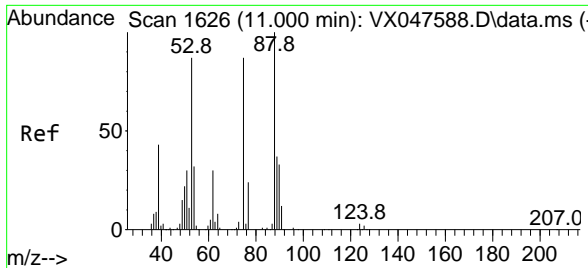


#76
 1,2,3-Trichloropropane
 Concen: 26.437 ug/l
 RT: 11.067 min Scan# 1637
 Delta R.T. -0.152 min
 Lab File: VX047878.D
 Acq: 29 Sep 2025 13:13



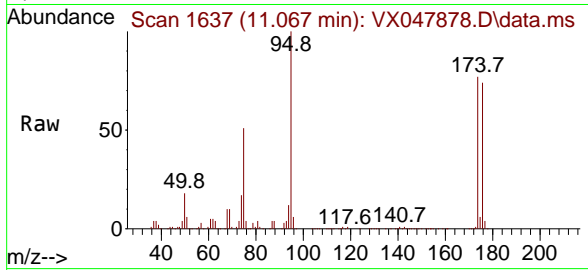
Tgt Ion: 75 Resp: 96093
 Ion Ratio Lower Upper
 75 100
 77 1.9 18.8 56.4#





#81
 trans-1,4-Dichloro-2-butene
 Concen: 67.418 ug/l
 RT: 11.067 min Scan# 10
 Delta R.T. 0.067 min
 Lab File: VX047878.D
 Acq: 29 Sep 2025 13:13

Instrument :
 MSVOA_X
 ClientSampleId :
 TT191D1-20250918



Tgt Ion: 75 Resp: 96093

Ion	Ratio	Lower	Upper
75	100		
53	0.1	83.4	125.2#
89	0.0	36.3	54.5#

