

Data Path : Z:\voasrv\HPCHEM1\MSVOA\_X\Data\VX092925\  
 Data File : VX047879.D  
 Acq On : 29 Sep 2025 13:34  
 Operator : JC/MD  
 Sample : Q3156-10  
 Misc : 5.0mL/MSVOA\_X/WATER  
 ALS Vial : 13 Sample Multiplier: 1

**Instrument :**  
 MSVOA\_X  
**ClientSampleId :**  
 TT180D1-20250918

Quant Time: Sep 30 01:20:01 2025  
 Quant Method : Z:\voasrv\HPCHEM1\MSVOA\_X\Method\82X091625W.M  
 Quant Title : SW846 8260  
 QLast Update : Wed Sep 17 06:39:58 2025  
 Response via : Initial Calibration

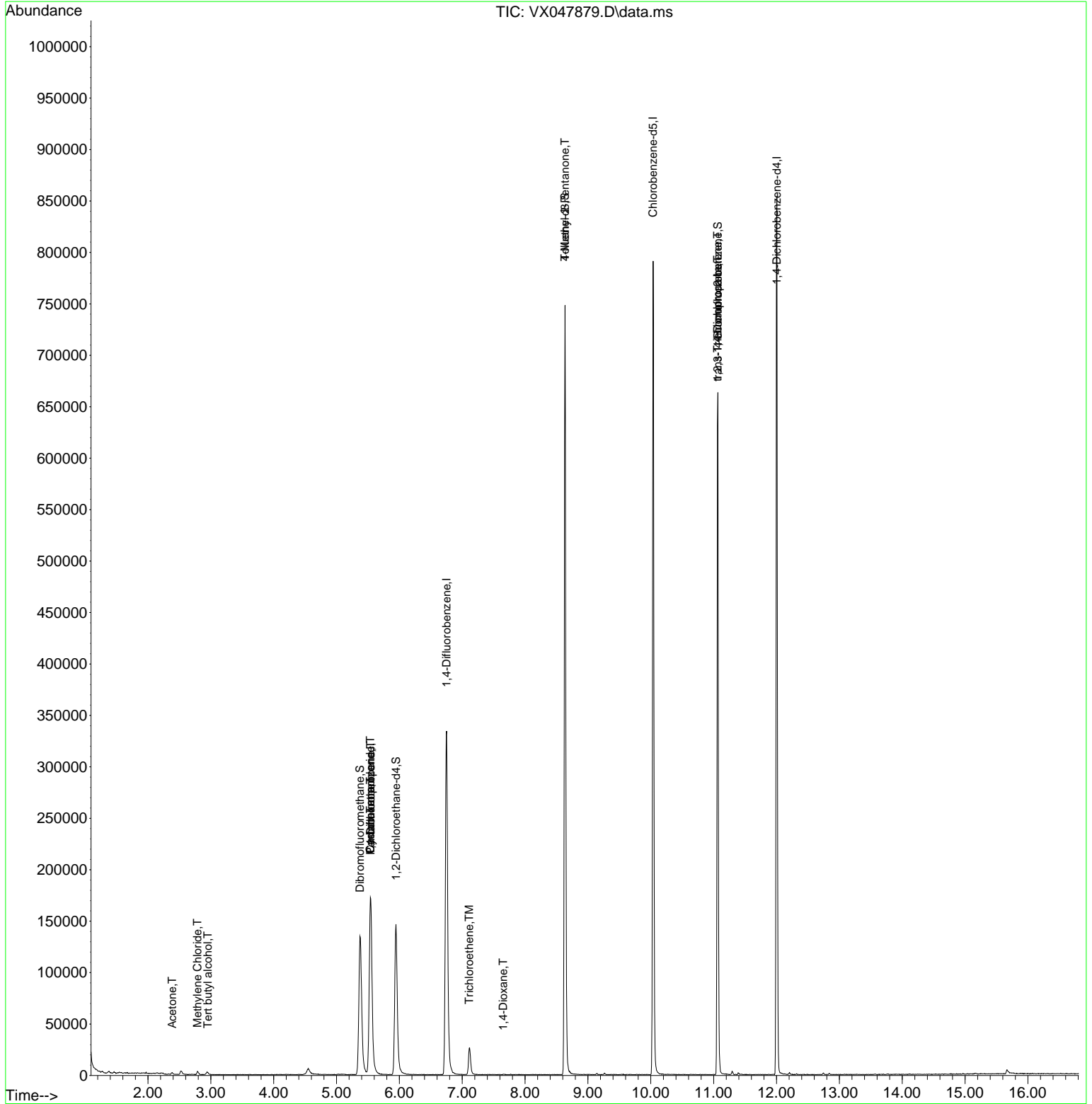
Compound	R.T.	QIon	Response	Conc	Units	Dev(Min)
-----						
Internal Standards						
1) Pentafluorobenzene	5.544	168	176708	50.000	ug/l	0.00
34) 1,4-Difluorobenzene	6.751	114	368400	50.000	ug/l	0.00
63) Chlorobenzene-d5	10.037	117	368560	50.000	ug/l	0.00
72) 1,4-Dichlorobenzene-d4	12.006	152	180399	50.000	ug/l	0.00
System Monitoring Compounds						
33) 1,2-Dichloroethane-d4	5.946	65	152938	54.373	ug/l	0.00
Spiked Amount	50.000	Range 78 - 117	Recovery	=	108.740%	
35) Dibromofluoromethane	5.373	113	130216	52.704	ug/l	0.00
Spiked Amount	50.000	Range 75 - 124	Recovery	=	105.400%	
50) Toluene-d8	8.635	98	448703	52.485	ug/l	0.00
Spiked Amount	50.000	Range 92 - 112	Recovery	=	104.980%	
62) 4-Bromofluorobenzene	11.067	95	189490	58.403	ug/l	0.00
Spiked Amount	50.000	Range 83 - 123	Recovery	=	116.800%	
Target Compounds						
						Qvalue
11) Tert butyl alcohol	2.953	59	1171	3.738	ug/l #	72
16) Acetone	2.386	43	2074	1.696	ug/l #	82
20) Methylene Chloride	2.788	84	1390	0.537	ug/l #	92
31) Cyclohexane	5.538	56	3840	1.033	ug/l #	1
36) 1,1-Dichloropropene	5.544	75	14976	4.148	ug/l #	51
38) Carbon Tetrachloride	5.538	117	18510	4.719	ug/l #	19
44) Trichloroethene	7.110	130	11909	4.492	ug/l	88
49) 1,4-Dioxane	7.653	88	193	6.047	ug/l #	75
51) 4-Methyl-2-Pentanone	8.635	43	2055	0.585	ug/l #	1
76) 1,2,3-Trichloropropane	11.061	75	96790	26.500	ug/l #	39
81) trans-1,4-Dichloro-2-b...	11.061	75	96790	67.578	ug/l #	8
-----						

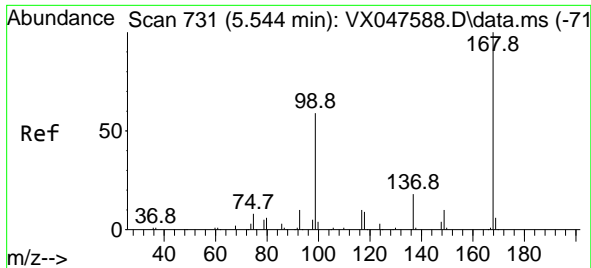
(#) = qualifier out of range (m) = manual integration (+) = signals summed

Data Path : Z:\voasrv\HPCHEM1\MSVOA\_X\Data\VX092925\  
 Data File : VX047879.D  
 Acq On : 29 Sep 2025 13:34  
 Operator : JC/MD  
 Sample : Q3156-10  
 Misc : 5.0mL/MSVOA\_X/WATER  
 ALS Vial : 13 Sample Multiplier: 1

**Instrument :**  
 MSVOA\_X  
**ClientSampleId :**  
 TT180D1-20250918

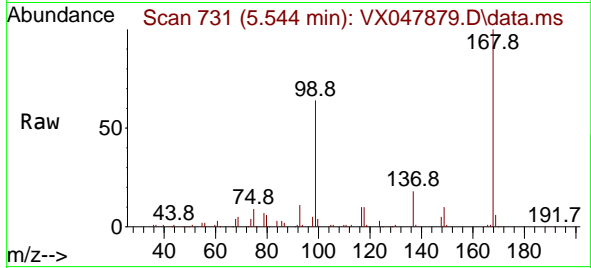
Quant Time: Sep 30 01:20:01 2025  
 Quant Method : Z:\voasrv\HPCHEM1\MSVOA\_X\Method\82X091625W.M  
 Quant Title : SW846 8260  
 QLast Update : Wed Sep 17 06:39:58 2025  
 Response via : Initial Calibration



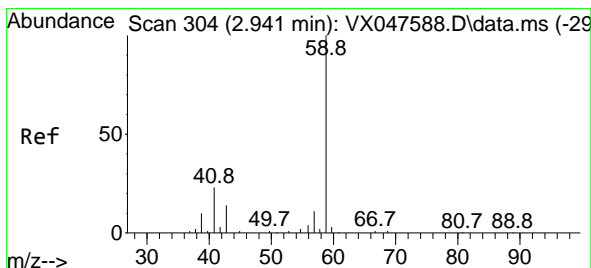
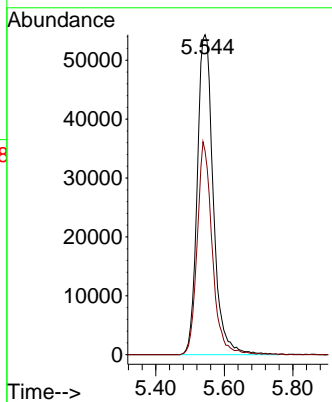
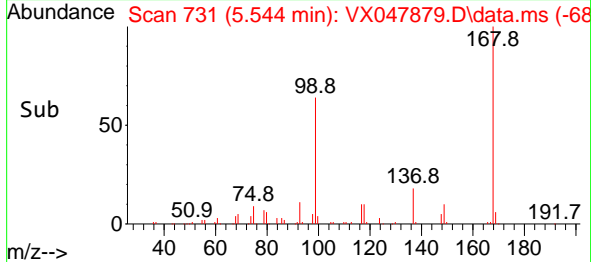


#1  
 Pentafluorobenzene  
 Concen: 50.000 ug/l  
 RT: 5.544 min Scan# 71  
 Delta R.T. -0.000 min  
 Lab File: VX047879.D  
 Acq: 29 Sep 2025 13:34

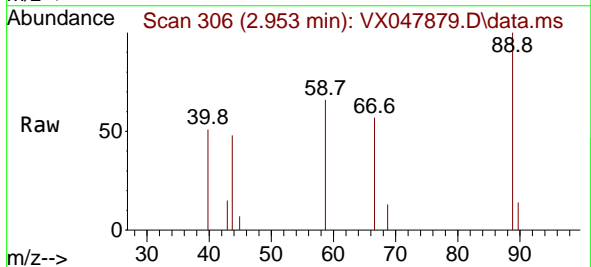
Instrument : MSVOA\_X  
 ClientSampleId : TT180D1-20250918



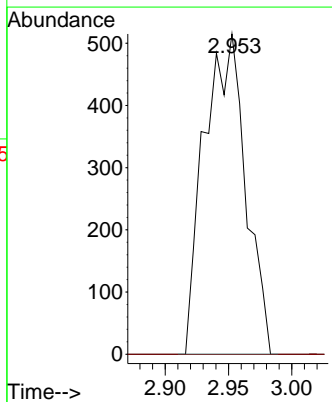
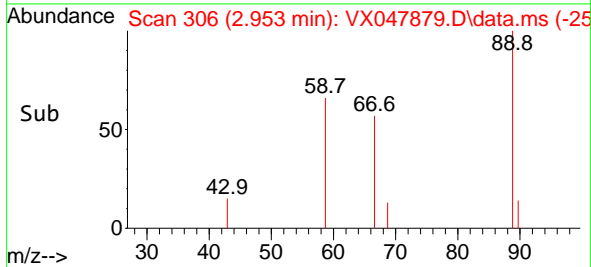
Tgt Ion:168 Resp: 176708  
 Ion Ratio Lower Upper  
 168 100  
 99 63.6 48.8 73.2

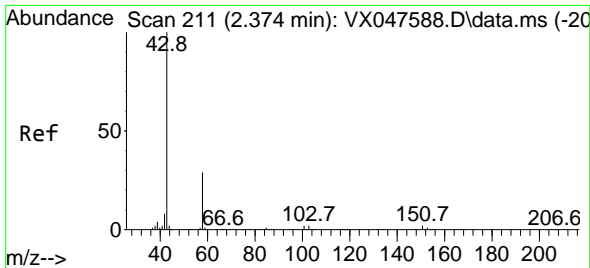


#11  
 Tert butyl alcohol  
 Concen: 3.738 ug/l  
 RT: 2.953 min Scan# 306  
 Delta R.T. 0.012 min  
 Lab File: VX047879.D  
 Acq: 29 Sep 2025 13:34



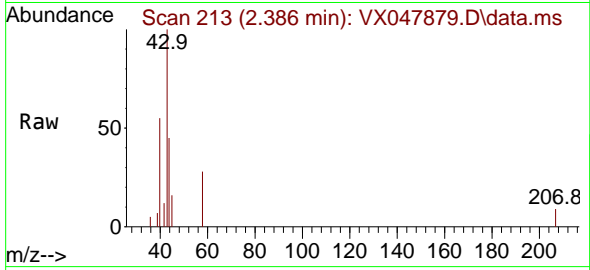
Tgt Ion: 59 Resp: 1171  
 Ion Ratio Lower Upper  
 59 100  
 57 0.0 8.3 12.5#



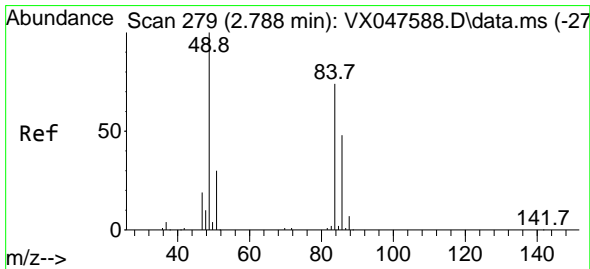
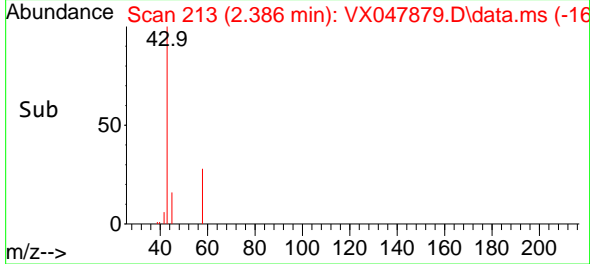
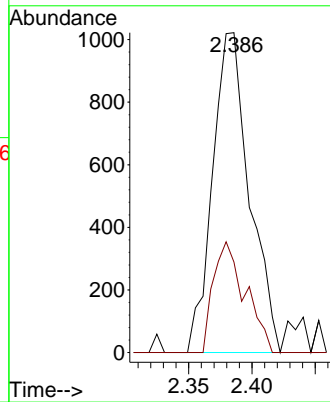


#16  
 Acetone  
 Concen: 1.696 ug/l  
 RT: 2.386 min Scan# 211  
 Delta R.T. 0.012 min  
 Lab File: VX047879.D  
 Acq: 29 Sep 2025 13:34

Instrument :  
 MSVOA\_X  
 ClientSampleId :  
 TT180D1-20250918

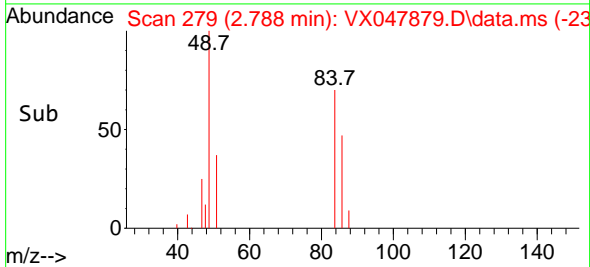
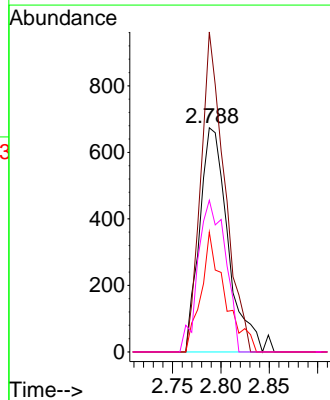
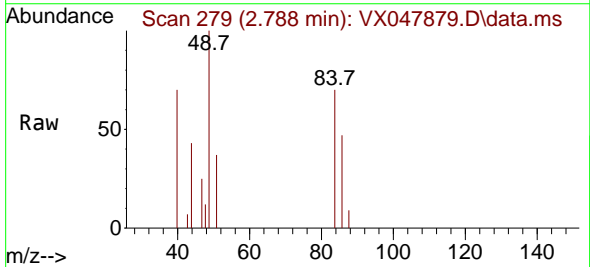


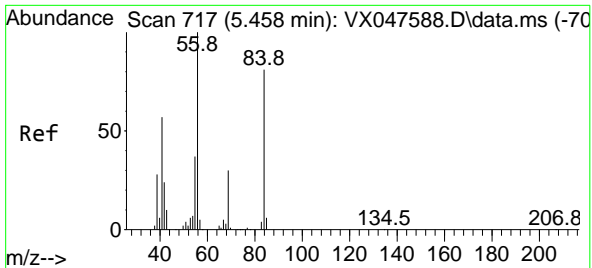
Tgt Ion: 43 Resp: 2074  
 Ion Ratio Lower Upper  
 43 100  
 58 19.5 23.4 35.0#



#20  
 Methylene Chloride  
 Concen: 0.537 ug/l  
 RT: 2.788 min Scan# 279  
 Delta R.T. -0.000 min  
 Lab File: VX047879.D  
 Acq: 29 Sep 2025 13:34

Tgt Ion: 84 Resp: 1390  
 Ion Ratio Lower Upper  
 84 100  
 49 142.7 108.6 162.8  
 51 53.4 32.6 48.8#  
 86 67.7 52.0 78.0

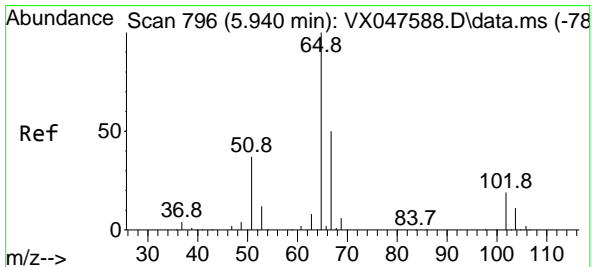
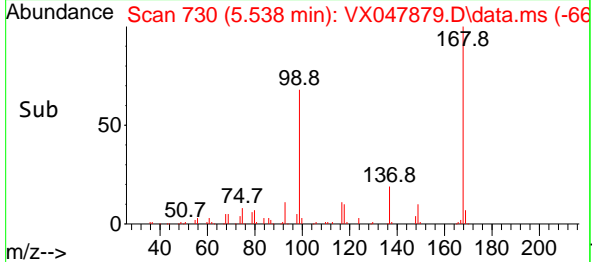
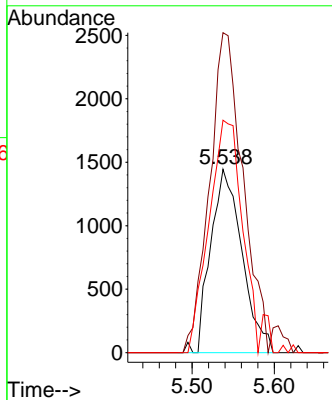
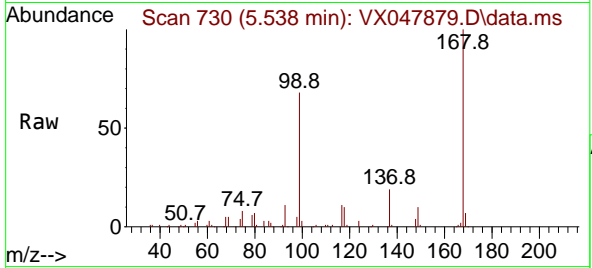




#31  
 Cyclohexane  
 Concen: 1.033 ug/l  
 RT: 5.538 min Scan# 717  
 Delta R.T. 0.079 min  
 Lab File: VX047879.D  
 Acq: 29 Sep 2025 13:34

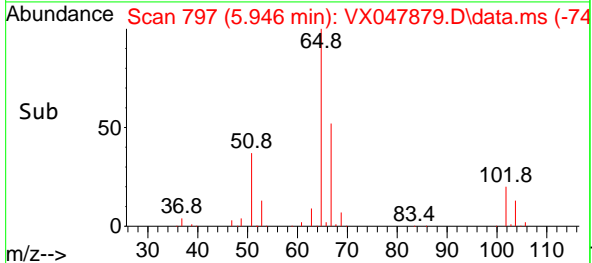
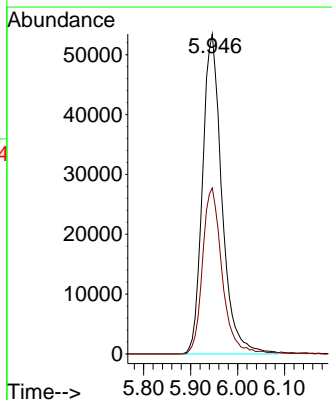
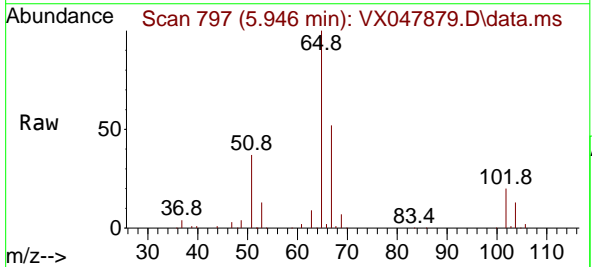
Instrument : MSVOA\_X  
 ClientSampleId : TT180D1-20250918

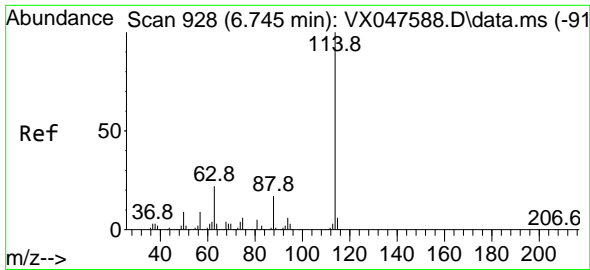
Tgt Ion: 56 Resp: 3840  
 Ion Ratio Lower Upper  
 56 100  
 69 174.5 23.8 35.8#  
 84 126.8 64.6 97.0#



#33  
 1,2-Dichloroethane-d4  
 Concen: 54.373 ug/l  
 RT: 5.946 min Scan# 797  
 Delta R.T. 0.006 min  
 Lab File: VX047879.D  
 Acq: 29 Sep 2025 13:34

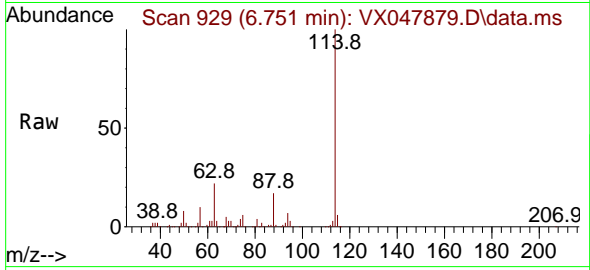
Tgt Ion: 65 Resp: 152938  
 Ion Ratio Lower Upper  
 65 100  
 67 52.5 0.0 103.0



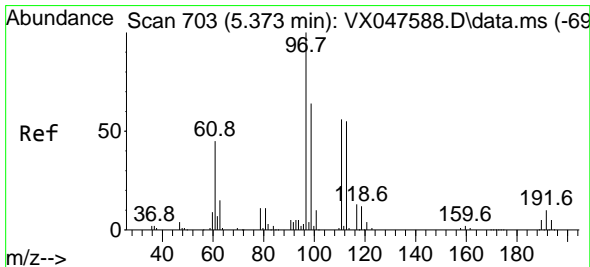
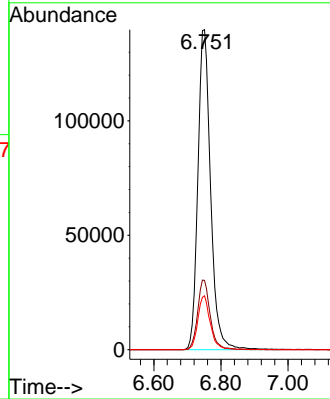
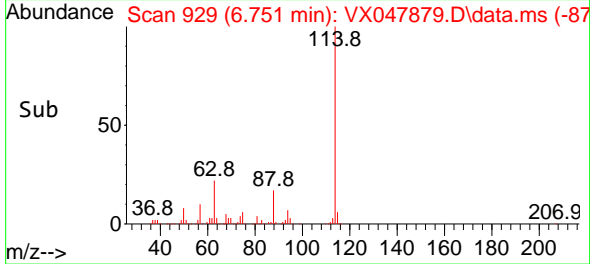


#34  
 1,4-Difluorobenzene  
 Concen: 50.000 ug/l  
 RT: 6.751 min Scan# 91  
 Delta R.T. 0.006 min  
 Lab File: VX047879.D  
 Acq: 29 Sep 2025 13:34

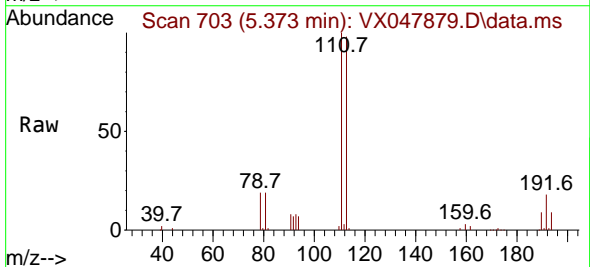
Instrument :  
 MSVOA\_X  
 ClientSampleId :  
 TT180D1-20250918



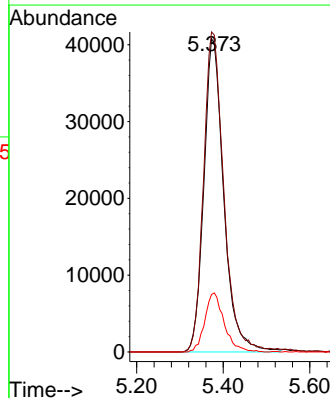
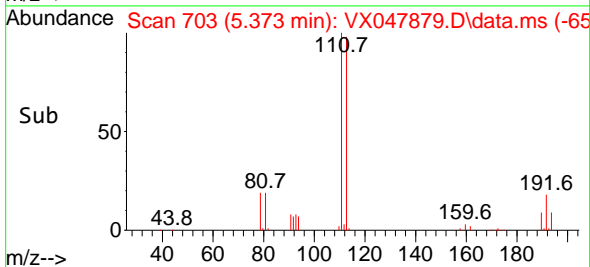
Tgt Ion:114 Resp: 368400  
 Ion Ratio Lower Upper  
 114 100  
 63 21.7 0.0 44.0  
 88 16.9 0.0 34.2

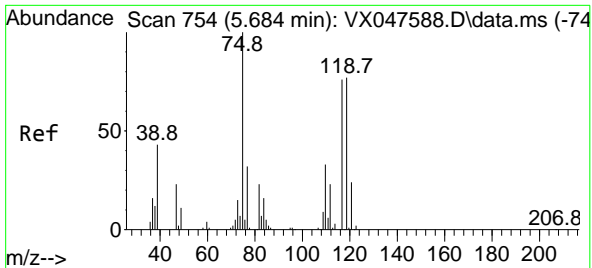


#35  
 Dibromofluoromethane  
 Concen: 52.704 ug/l  
 RT: 5.373 min Scan# 703  
 Delta R.T. -0.000 min  
 Lab File: VX047879.D  
 Acq: 29 Sep 2025 13:34



Tgt Ion:113 Resp: 130216  
 Ion Ratio Lower Upper  
 113 100  
 111 103.7 80.9 121.3  
 192 18.3 14.2 21.4



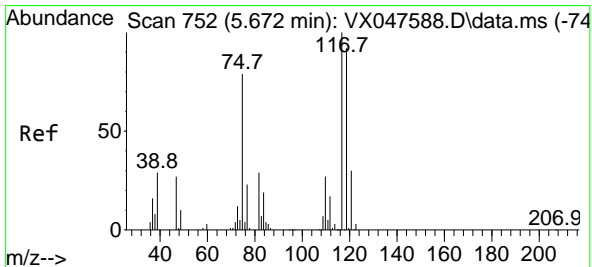
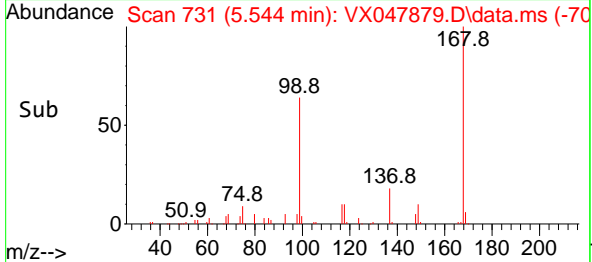
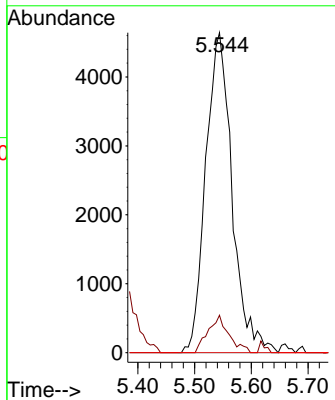
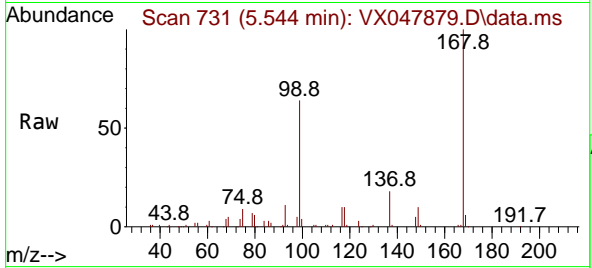


#36  
 1,1-Dichloropropene  
 Concen: 4.148 ug/l  
 RT: 5.544 min Scan# 710  
 Delta R.T. -0.140 min  
 Lab File: VX047879.D  
 Acq: 29 Sep 2025 13:34

Instrument : MSVOA\_X  
 ClientSampleId : TT180D1-20250918

Tgt Ion: 75 Resp: 14976

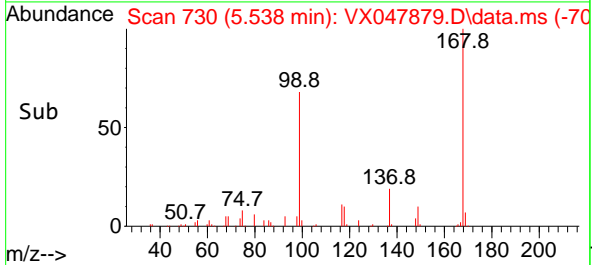
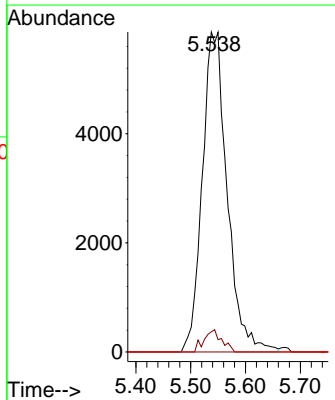
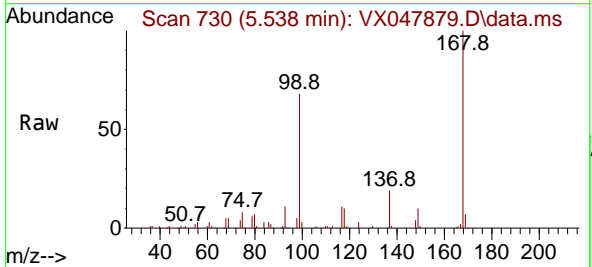
Ion	Ratio	Lower	Upper
75	100		
110	9.2	16.7	50.1#
77	0.0	24.3	36.5#

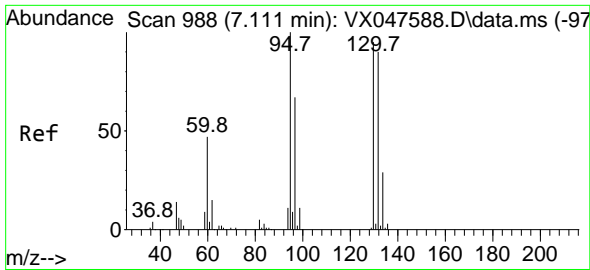


#38  
 Carbon Tetrachloride  
 Concen: 4.719 ug/l  
 RT: 5.538 min Scan# 730  
 Delta R.T. -0.134 min  
 Lab File: VX047879.D  
 Acq: 29 Sep 2025 13:34

Tgt Ion: 117 Resp: 18510

Ion	Ratio	Lower	Upper
117	100		
119	6.3	73.4	110.2#
121	0.0	23.8	35.6#

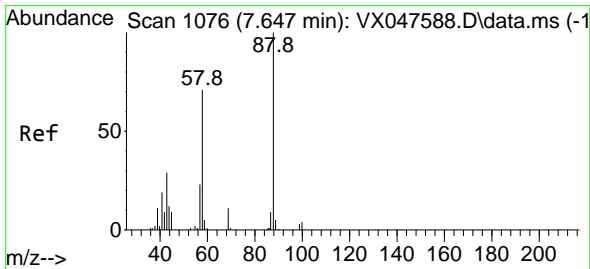
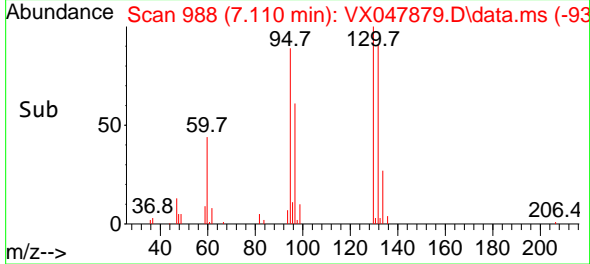
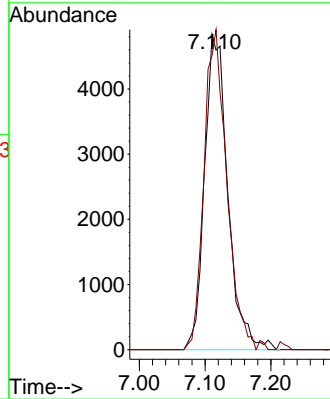
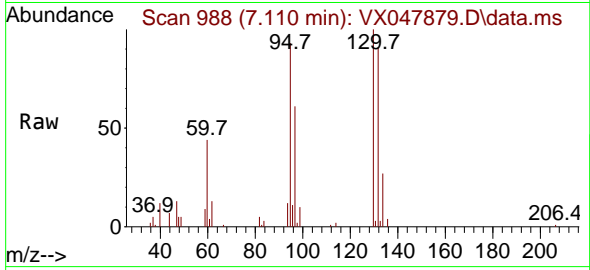




#44  
 Trichloroethene  
 Concen: 4.492 ug/l  
 RT: 7.110 min Scan# 91  
 Delta R.T. -0.000 min  
 Lab File: VX047879.D  
 Acq: 29 Sep 2025 13:34

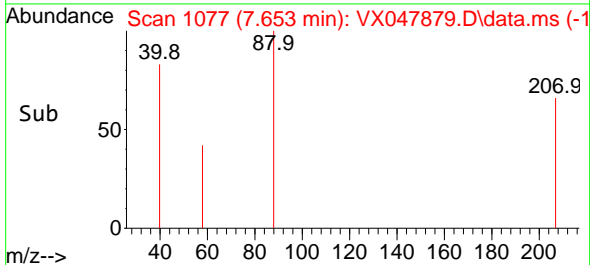
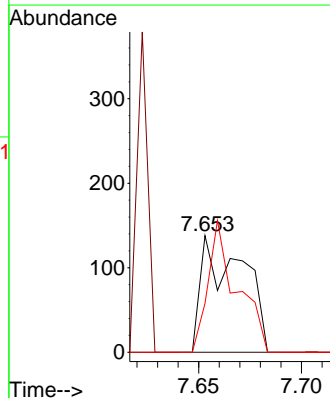
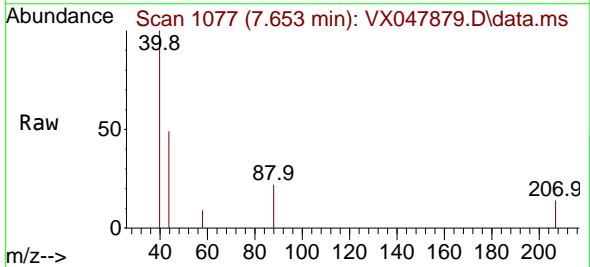
Instrument : MSVOA\_X  
 ClientSampleId : TT180D1-20250918

Tgt Ion:130 Resp: 11909  
 Ion Ratio Lower Upper  
 130 100  
 95 93.3 0.0 210.8

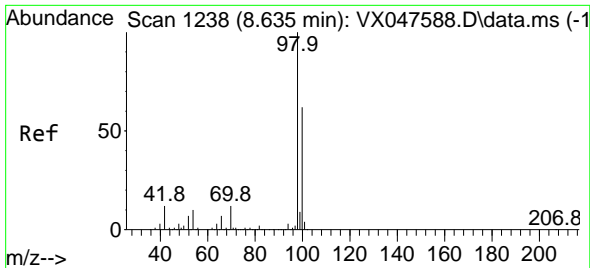


#49  
 1,4-Dioxane  
 Concen: 6.047 ug/l  
 RT: 7.653 min Scan# 1077  
 Delta R.T. 0.006 min  
 Lab File: VX047879.D  
 Acq: 29 Sep 2025 13:34

Tgt Ion: 88 Resp: 193  
 Ion Ratio Lower Upper  
 88 100  
 43 0.0 30.2 45.2#  
 58 78.8 59.5 89.3

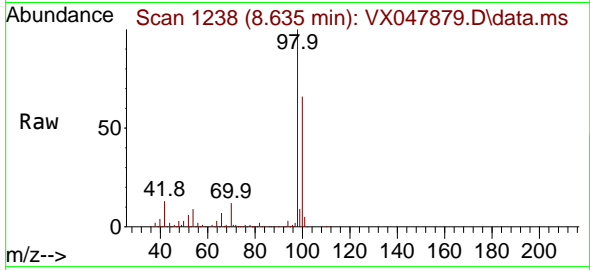




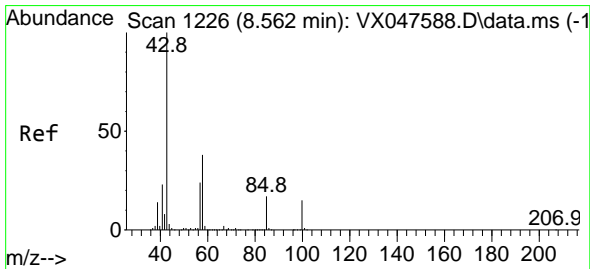
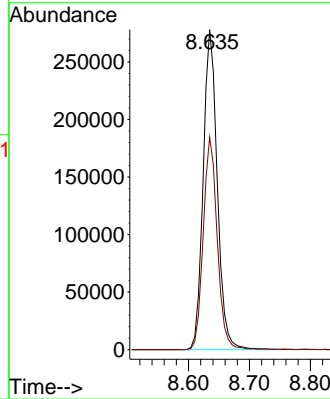
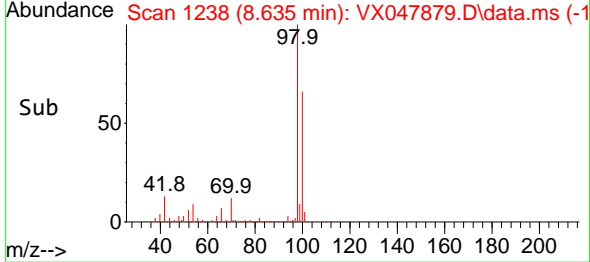


#50  
 Toluene-d8  
 Concen: 52.485 ug/l  
 RT: 8.635 min Scan# 1238  
 Delta R.T. -0.000 min  
 Lab File: VX047879.D  
 Acq: 29 Sep 2025 13:34

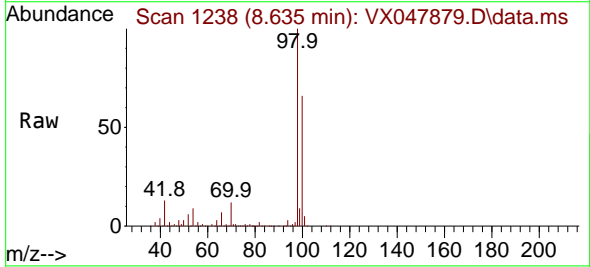
Instrument : MSVOA\_X  
 ClientSampleId : TT180D1-20250918



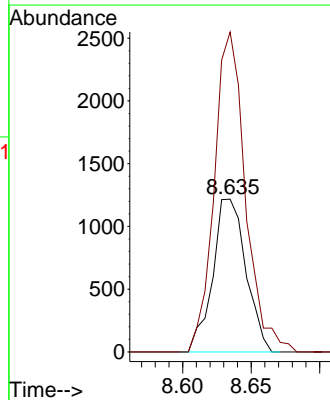
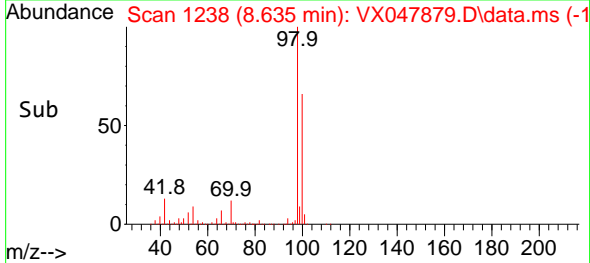
Tgt Ion: 98 Resp: 448703  
 Ion Ratio Lower Upper  
 98 100  
 100 66.1 53.0 79.4

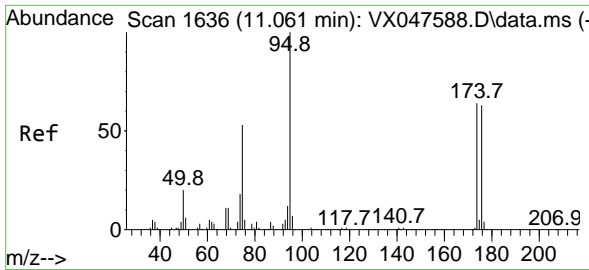


#51  
 4-Methyl-2-Pentanone  
 Concen: 0.585 ug/l  
 RT: 8.635 min Scan# 1238  
 Delta R.T. 0.073 min  
 Lab File: VX047879.D  
 Acq: 29 Sep 2025 13:34



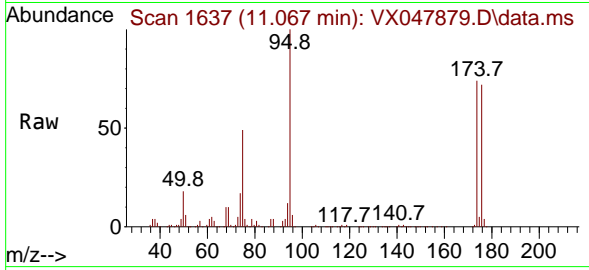
Tgt Ion: 43 Resp: 2055  
 Ion Ratio Lower Upper  
 43 100  
 58 196.4 30.3 45.5#



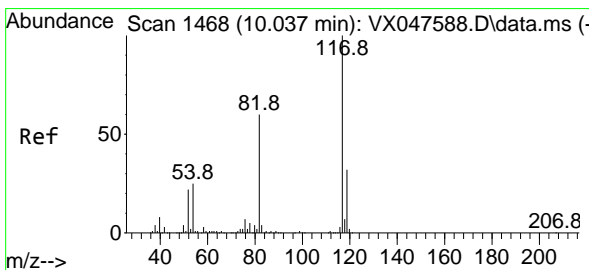
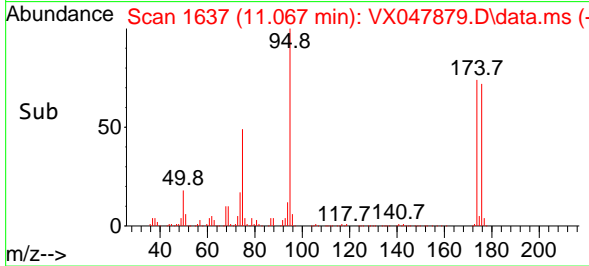
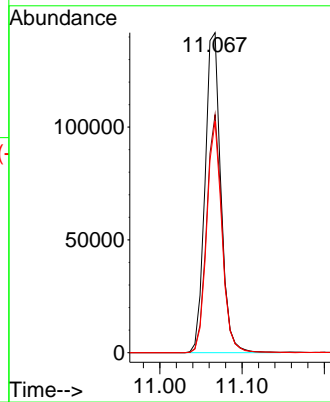


#62  
 4-Bromofluorobenzene  
 Concen: 58.403 ug/l  
 RT: 11.067 min Scan# 11  
 Delta R.T. 0.006 min  
 Lab File: VX047879.D  
 Acq: 29 Sep 2025 13:34

Instrument :  
 MSVOA\_X  
 ClientSampleId :  
 TT180D1-20250918

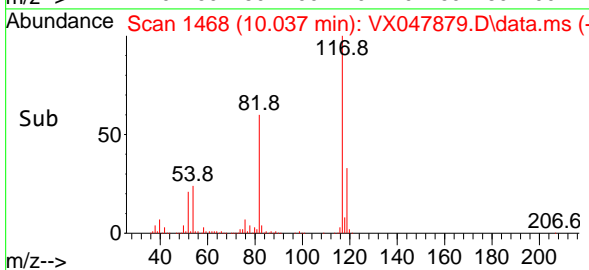
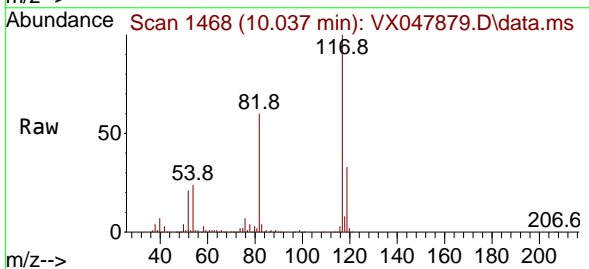
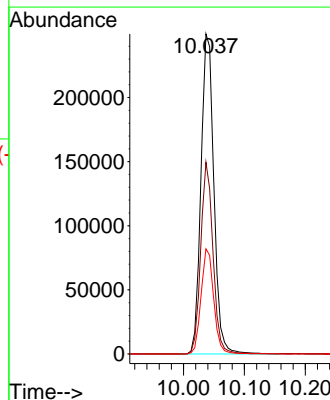


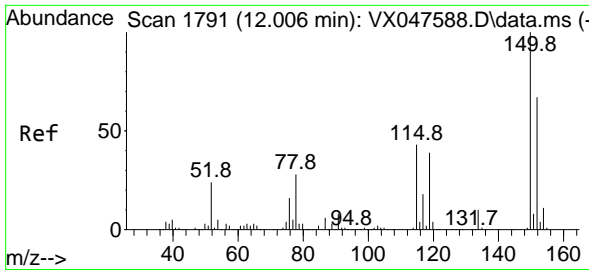
Tgt Ion: 95 Resp: 189490  
 Ion Ratio Lower Upper  
 95 100  
 174 73.0 0.0 141.6  
 176 69.4 0.0 138.4



#63  
 Chlorobenzene-d5  
 Concen: 50.000 ug/l  
 RT: 10.037 min Scan# 1468  
 Delta R.T. -0.000 min  
 Lab File: VX047879.D  
 Acq: 29 Sep 2025 13:34

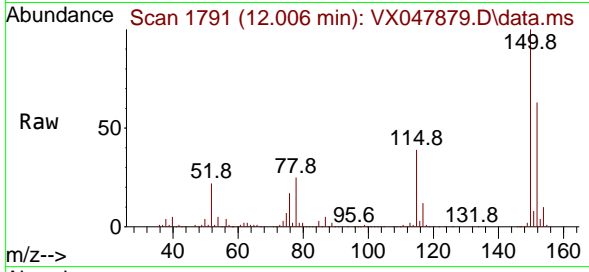
Tgt Ion: 117 Resp: 368560  
 Ion Ratio Lower Upper  
 117 100  
 82 59.9 47.8 71.6  
 119 32.8 25.2 37.8



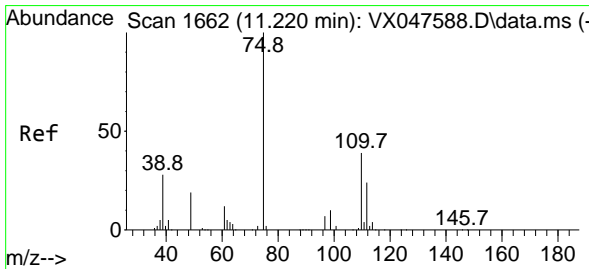
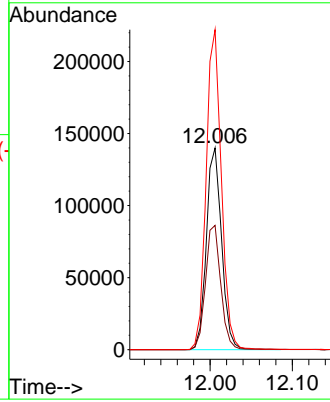
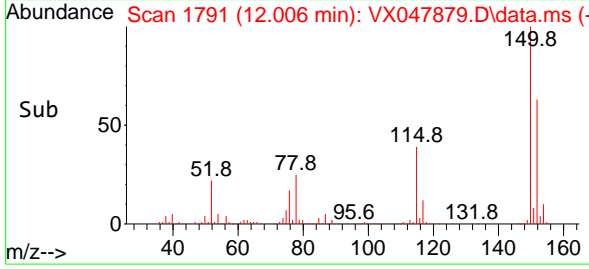


#72  
 1,4-Dichlorobenzene-d4  
 Concen: 50.000 ug/l  
 RT: 12.006 min Scan# 11  
 Delta R.T. -0.000 min  
 Lab File: VX047879.D  
 Acq: 29 Sep 2025 13:34

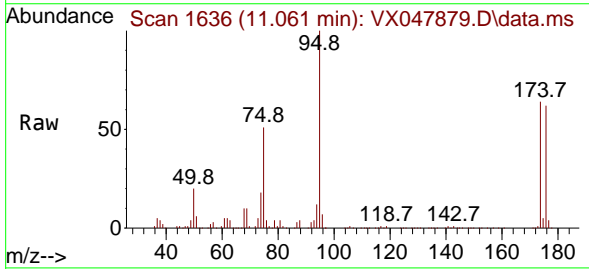
Instrument : MSVOA\_X  
 ClientSampleId : TT180D1-20250918



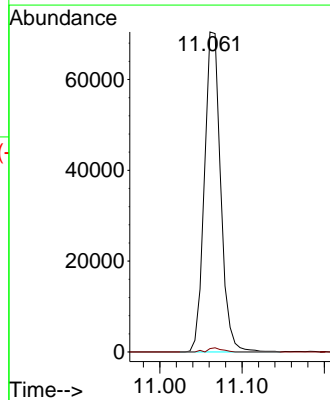
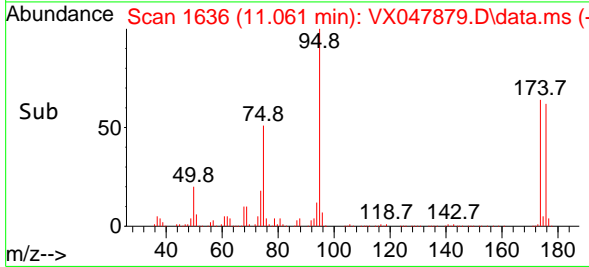
Tgt Ion:152 Resp: 180399  
 Ion Ratio Lower Upper  
 152 100  
 115 61.9 44.9 134.5  
 150 158.3 0.0 352.0

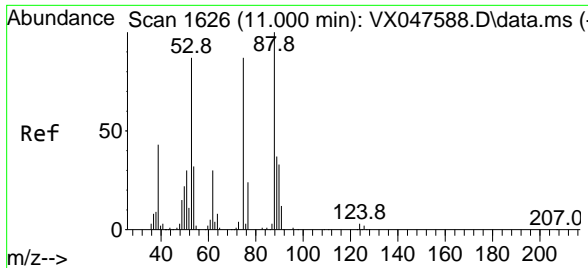


#76  
 1,2,3-Trichloropropane  
 Concen: 26.500 ug/l  
 RT: 11.061 min Scan# 1636  
 Delta R.T. -0.159 min  
 Lab File: VX047879.D  
 Acq: 29 Sep 2025 13:34



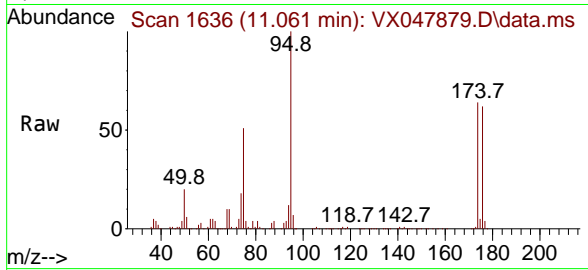
Tgt Ion: 75 Resp: 96790  
 Ion Ratio Lower Upper  
 75 100  
 77 1.2 18.8 56.4#





#81  
 trans-1,4-Dichloro-2-butene  
 Concen: 67.578 ug/l  
 RT: 11.061 min Scan# 1  
 Delta R.T. 0.061 min  
 Lab File: VX047879.D  
 Acq: 29 Sep 2025 13:34

Instrument :  
 MSVOA\_X  
 ClientSampleId :  
 TT180D1-20250918



Tgt Ion: 75 Resp: 96790

Ion	Ratio	Lower	Upper
75	100		
53	0.1	83.4	125.2#
89	0.0	36.3	54.5#

