

Data Path : Z:\voasrv\HPCHEM1\MSVOA_X\Data\VX092925\
 Data File : VX047882.D
 Acq On : 29 Sep 2025 14:38
 Operator : JC/MD
 Sample : Q3156-21
 Misc : 5.0mL/MSVOA_X/WATER
 ALS Vial : 16 Sample Multiplier: 1

Instrument :
 MSVOA_X
 ClientSampleId :
 RW9-MW01D3-20250918

Quant Time: Sep 30 01:21:17 2025
 Quant Method : Z:\voasrv\HPCHEM1\MSVOA_X\Method\82X091625W.M
 Quant Title : SW846 8260
 QLast Update : Wed Sep 17 06:39:58 2025
 Response via : Initial Calibration

Compound	R.T.	QIon	Response	Conc	Units	Dev(Min)

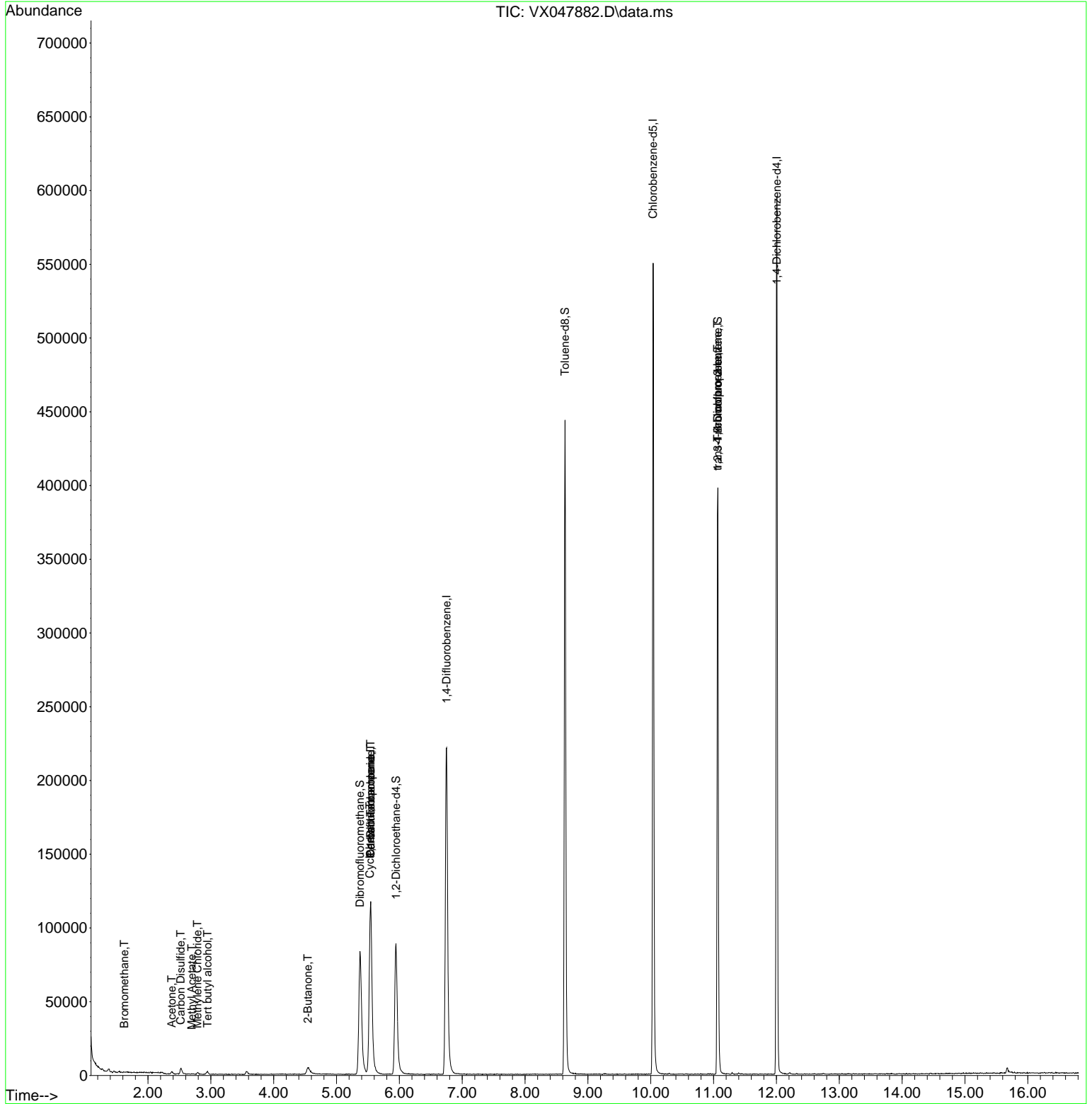
Internal Standards						
1) Pentafluorobenzene	5.544	168	118564	50.000	ug/l	0.00
34) 1,4-Difluorobenzene	6.751	114	244768	50.000	ug/l	0.00
63) Chlorobenzene-d5	10.037	117	250385	50.000	ug/l	0.00
72) 1,4-Dichlorobenzene-d4	12.006	152	126372	50.000	ug/l	0.00
System Monitoring Compounds						
33) 1,2-Dichloroethane-d4	5.946	65	96490	51.128	ug/l	0.00
Spiked Amount	50.000	Range 78 - 117	Recovery	=	102.260%	
35) Dibromofluoromethane	5.373	113	80193	48.852	ug/l	0.00
Spiked Amount	50.000	Range 75 - 124	Recovery	=	97.700%	
50) Toluene-d8	8.635	98	274193	48.273	ug/l	0.00
Spiked Amount	50.000	Range 92 - 112	Recovery	=	96.540%	
62) 4-Bromofluorobenzene	11.067	95	115008	53.351	ug/l	0.00
Spiked Amount	50.000	Range 83 - 123	Recovery	=	106.700%	
Target Compounds						
					Qvalue	
5) Bromomethane	1.624	94	273	0.273	ug/l #	47
11) Tert butyl alcohol	2.947	59	901	4.287	ug/l #	72
16) Acetone	2.380	43	2310	2.815	ug/l #	79
17) Carbon Disulfide	2.520	76	1073	0.278	ug/l #	86
18) Methyl Acetate	2.697	43	457	0.250	ug/l #	54
20) Methylene Chloride	2.788	84	503	0.290	ug/l #	83
25) 2-Butanone	4.544	43	399	0.390	ug/l #	50
31) Cyclohexane	5.532	56	1237	0.496	ug/l #	1
36) 1,1-Dichloropropene	5.544	75	9781	4.078	ug/l #	53
38) Carbon Tetrachloride	5.544	117	12931	4.962	ug/l #	19
76) 1,2,3-Trichloropropane	11.061	75	59399	23.215	ug/l #	39
81) trans-1,4-Dichloro-2-b...	11.061	75	59399	59.202	ug/l #	8

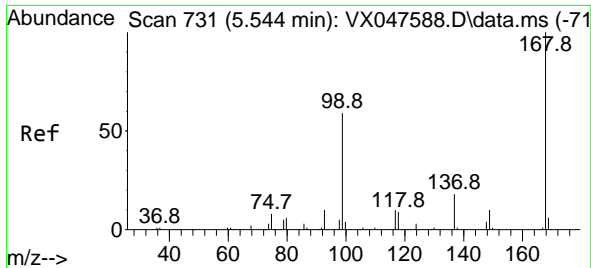
(#) = qualifier out of range (m) = manual integration (+) = signals summed

Data Path : Z:\voasrv\HPCHEM1\MSVOA_X\Data\VX092925\
 Data File : VX047882.D
 Acq On : 29 Sep 2025 14:38
 Operator : JC/MD
 Sample : Q3156-21
 Misc : 5.0mL/MSVOA_X/WATER
 ALS Vial : 16 Sample Multiplier: 1

Instrument :
 MSVOA_X
ClientSampleId :
 RW9-MW01D3-20250918

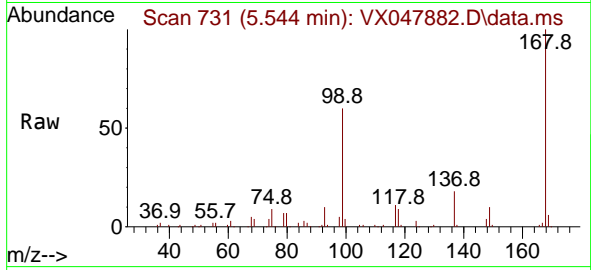
Quant Time: Sep 30 01:21:17 2025
 Quant Method : Z:\voasrv\HPCHEM1\MSVOA_X\Method\82X091625W.M
 Quant Title : SW846 8260
 QLast Update : Wed Sep 17 06:39:58 2025
 Response via : Initial Calibration



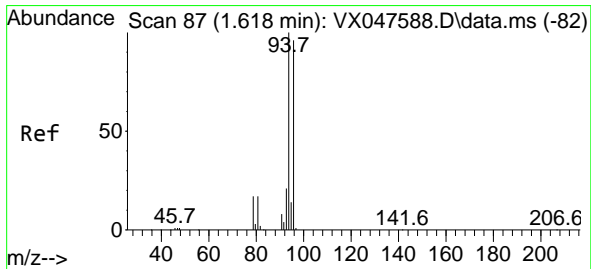
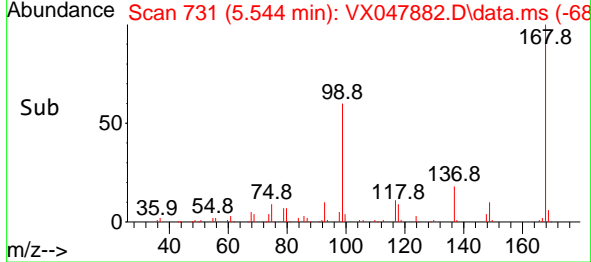
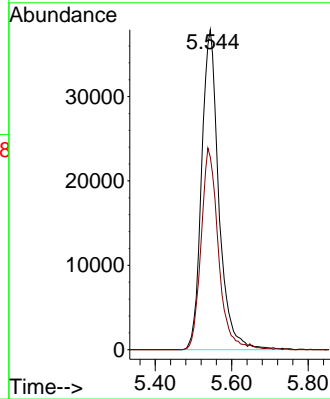


#1
 Pentafluorobenzene
 Concen: 50.000 ug/l
 RT: 5.544 min Scan# 71
 Delta R.T. -0.000 min
 Lab File: VX047882.D
 Acq: 29 Sep 2025 14:38

Instrument : MSVOA_X
 ClientSampleId : RW9-MW01D3-20250918

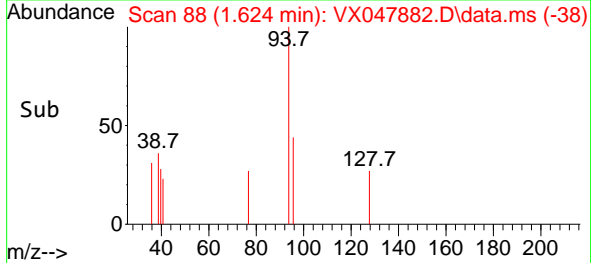
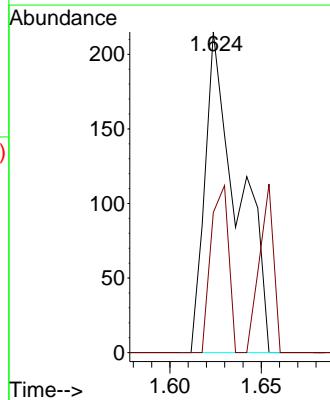
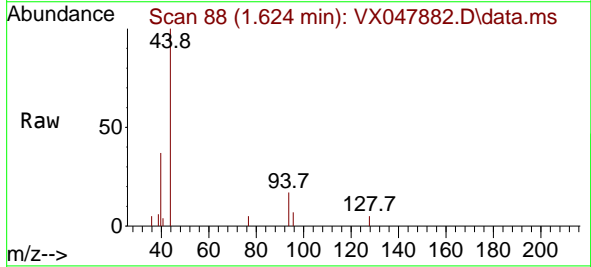


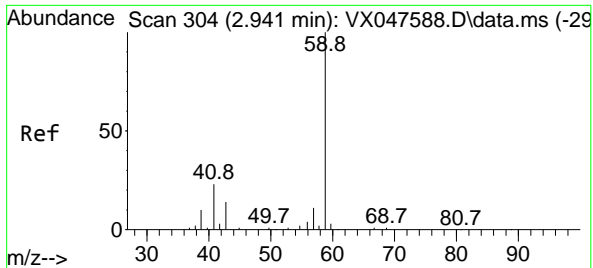
Tgt Ion:168 Resp: 118564
 Ion Ratio Lower Upper
 168 100
 99 60.2 48.8 73.2



#5
 Bromomethane
 Concen: 0.273 ug/l
 RT: 1.624 min Scan# 88
 Delta R.T. 0.006 min
 Lab File: VX047882.D
 Acq: 29 Sep 2025 14:38

Tgt Ion: 94 Resp: 273
 Ion Ratio Lower Upper
 94 100
 96 43.7 76.6 115.0#

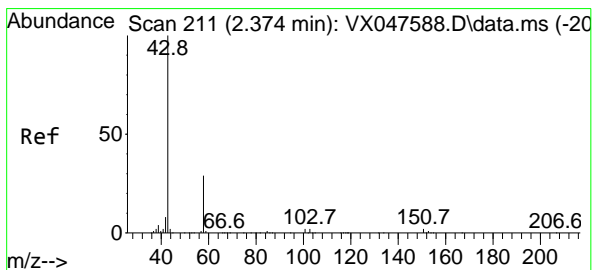
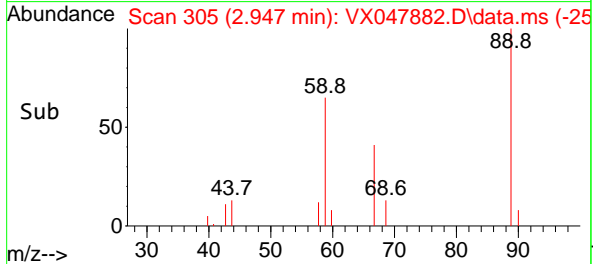
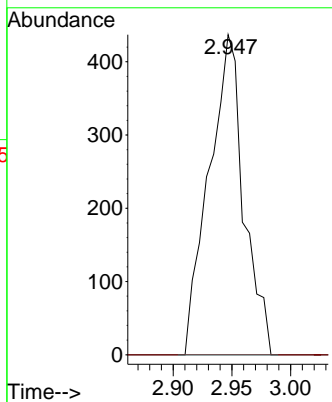
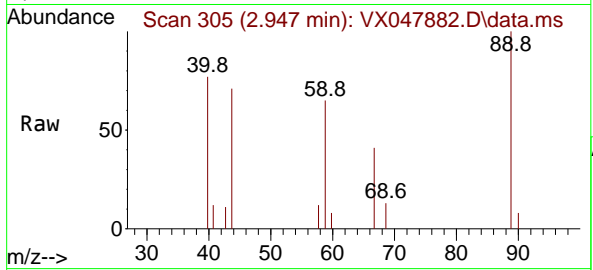




#11
 Tert butyl alcohol
 Concen: 4.287 ug/l
 RT: 2.947 min Scan# 30
 Delta R.T. 0.006 min
 Lab File: VX047882.D
 Acq: 29 Sep 2025 14:38

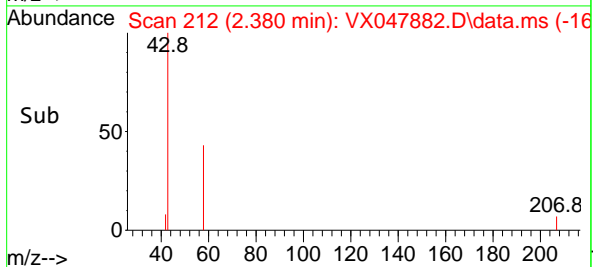
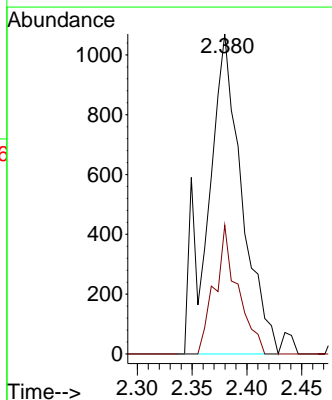
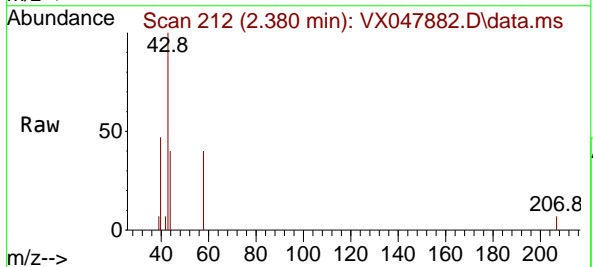
Instrument : MSVOA_X
 ClientSampleId : RW9-MW01D3-20250918

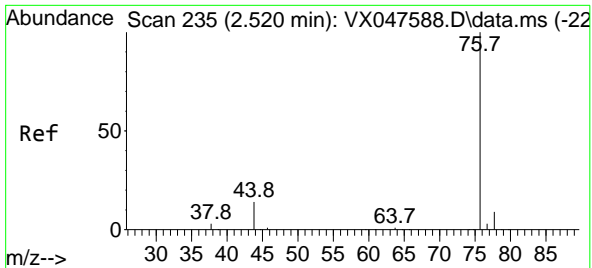
Tgt Ion: 59 Resp: 901
 Ion Ratio Lower Upper
 59 100
 57 0.0 8.3 12.5#



#16
 Acetone
 Concen: 2.815 ug/l
 RT: 2.380 min Scan# 212
 Delta R.T. 0.006 min
 Lab File: VX047882.D
 Acq: 29 Sep 2025 14:38

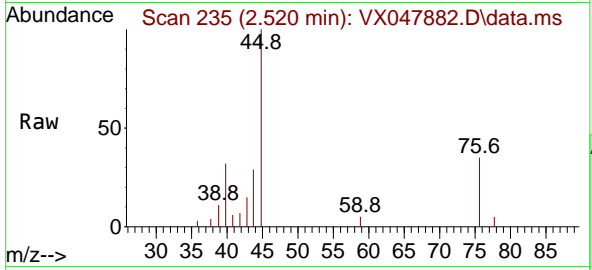
Tgt Ion: 43 Resp: 2310
 Ion Ratio Lower Upper
 43 100
 58 40.3 23.4 35.0#



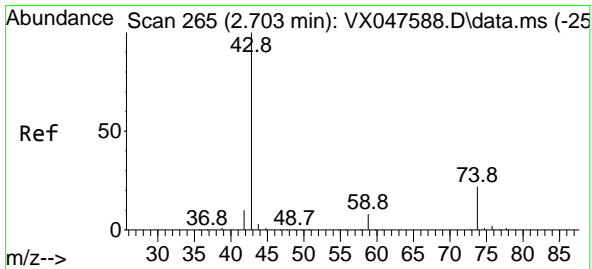
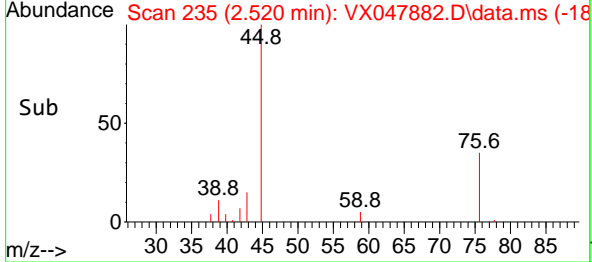
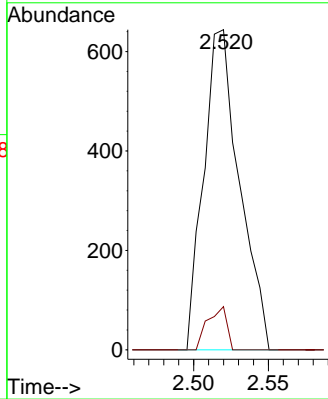


#17
 Carbon Disulfide
 Concen: 0.278 ug/l
 RT: 2.520 min Scan# 21
 Delta R.T. 0.000 min
 Lab File: VX047882.D
 Acq: 29 Sep 2025 14:38

Instrument : MSVOA_X
 ClientSampleId : RW9-MW01D3-20250918

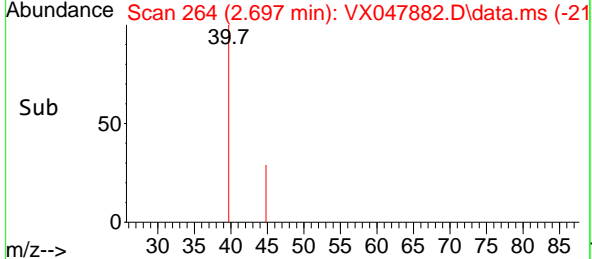
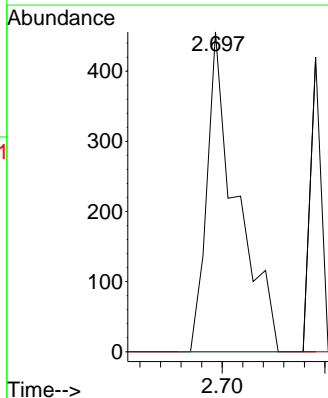
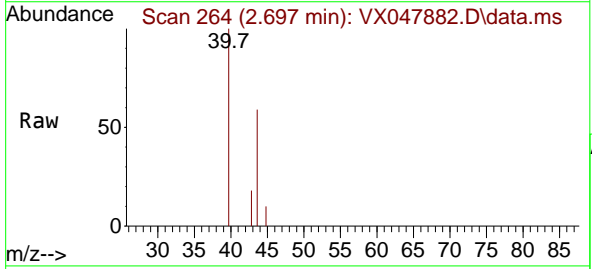


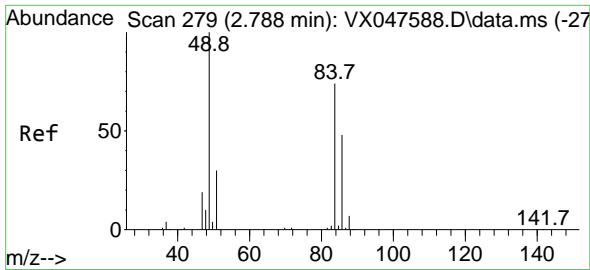
Tgt Ion: 76 Resp: 1073
 Ion Ratio Lower Upper
 76 100
 78 13.5 6.8 10.2#



#18
 Methyl Acetate
 Concen: 0.250 ug/l
 RT: 2.697 min Scan# 264
 Delta R.T. -0.006 min
 Lab File: VX047882.D
 Acq: 29 Sep 2025 14:38

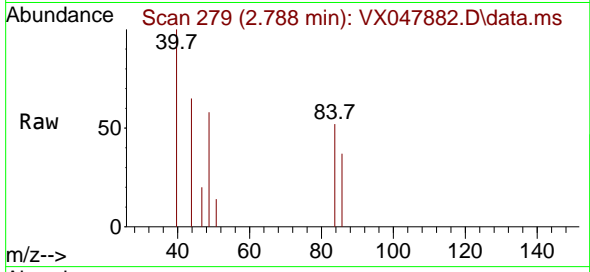
Tgt Ion: 43 Resp: 457
 Ion Ratio Lower Upper
 43 100
 74 0.0 17.4 26.2#



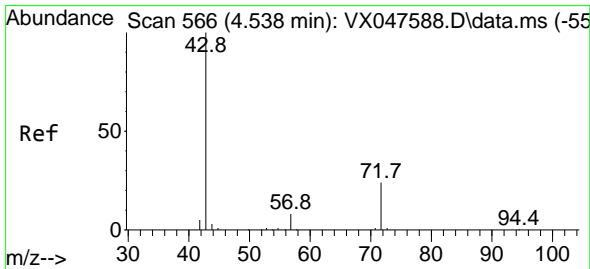
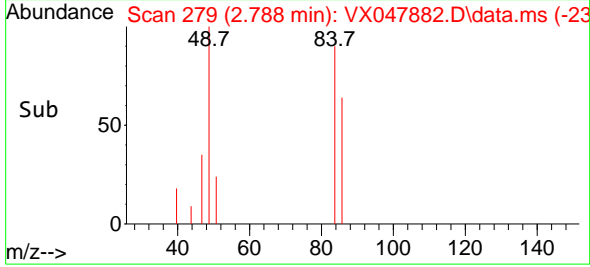
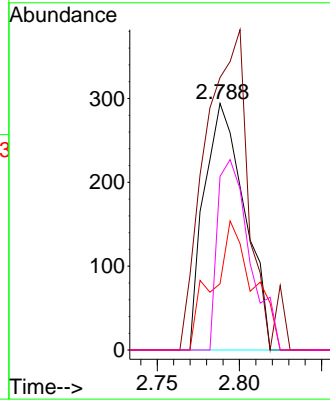


#20
 Methylene Chloride
 Concen: 0.290 ug/l
 RT: 2.788 min Scan# 21
 Delta R.T. 0.000 min
 Lab File: VX047882.D
 Acq: 29 Sep 2025 14:38

Instrument :
 MSVOA_X
 ClientSampleId :
 RW9-MW01D3-20250918

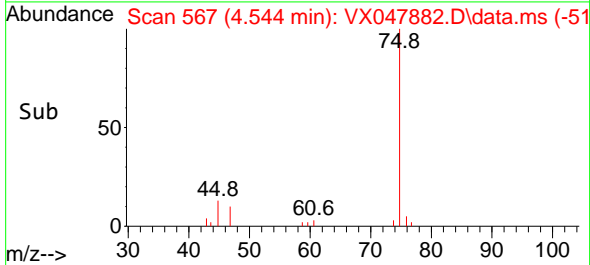
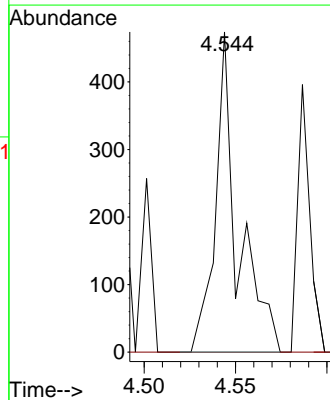
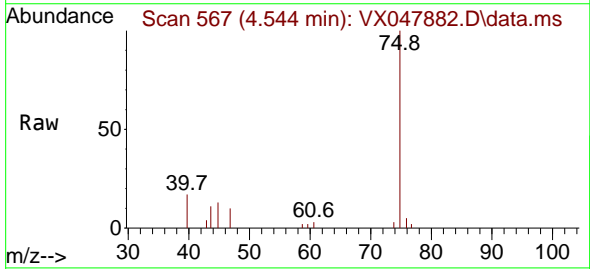


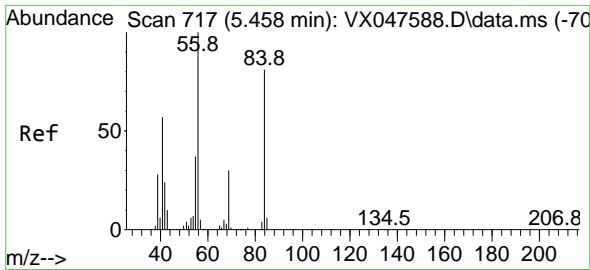
Tgt Ion: 84 Resp: 503
 Ion Ratio Lower Upper
 84 100
 49 110.5 108.6 162.8
 51 26.9 32.6 48.8#
 86 70.4 52.0 78.0



#25
 2-Butanone
 Concen: 0.390 ug/l
 RT: 4.544 min Scan# 567
 Delta R.T. 0.006 min
 Lab File: VX047882.D
 Acq: 29 Sep 2025 14:38

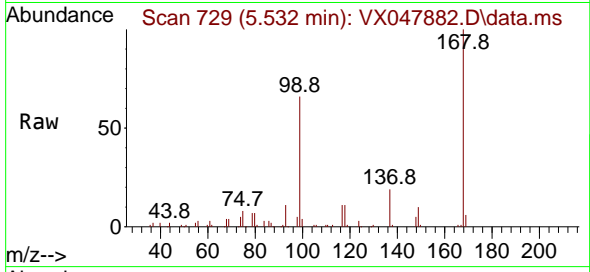
Tgt Ion: 43 Resp: 399
 Ion Ratio Lower Upper
 43 100
 72 0.0 20.1 30.1#





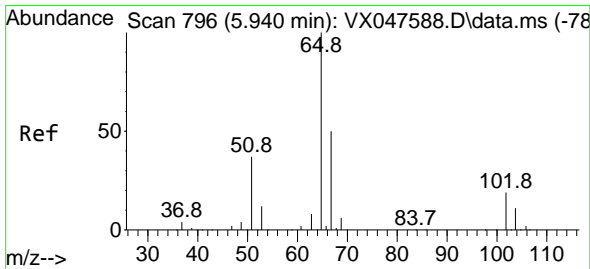
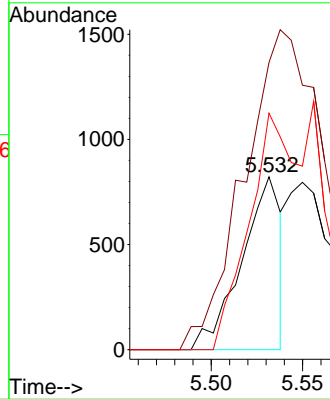
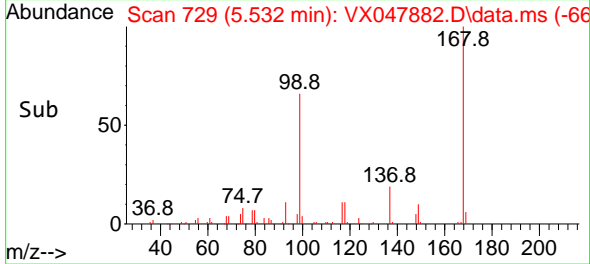
#31
 Cyclohexane
 Concen: 0.496 ug/l
 RT: 5.532 min Scan# 717
 Delta R.T. 0.073 min
 Lab File: VX047882.D
 Acq: 29 Sep 2025 14:38

Instrument :
 MSVOA_X
ClientSampleId :
 RW9-MW01D3-20250918

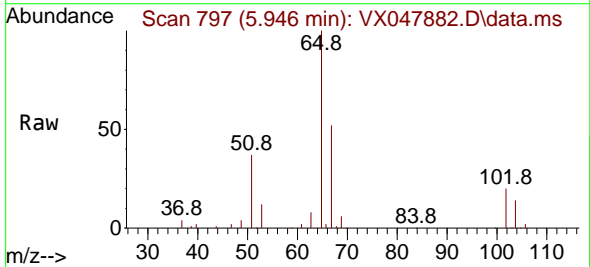


Tgt Ion: 56 Resp: 1237

Ion	Ratio	Lower	Upper
56	100		
69	166.2	23.8	35.8#
84	136.9	64.6	97.0#

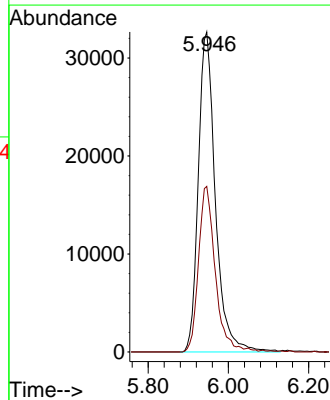
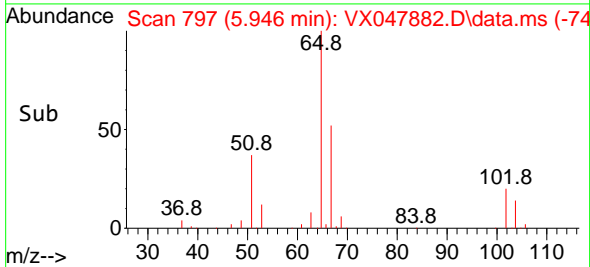


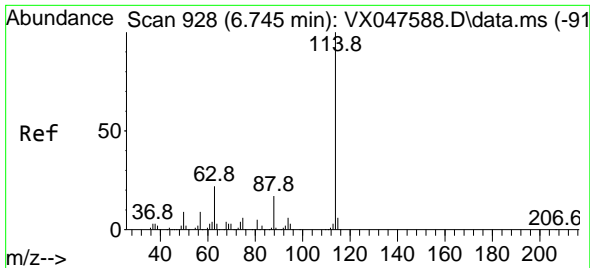
#33
 1,2-Dichloroethane-d4
 Concen: 51.128 ug/l
 RT: 5.946 min Scan# 797
 Delta R.T. 0.006 min
 Lab File: VX047882.D
 Acq: 29 Sep 2025 14:38



Tgt Ion: 65 Resp: 96490

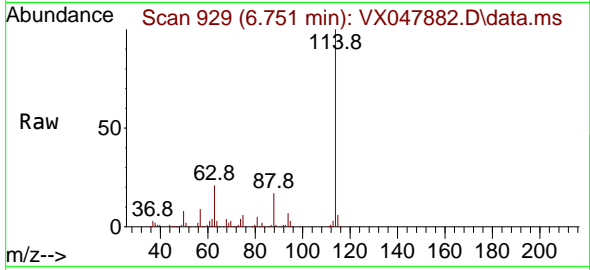
Ion	Ratio	Lower	Upper
65	100		
67	50.8	0.0	103.0



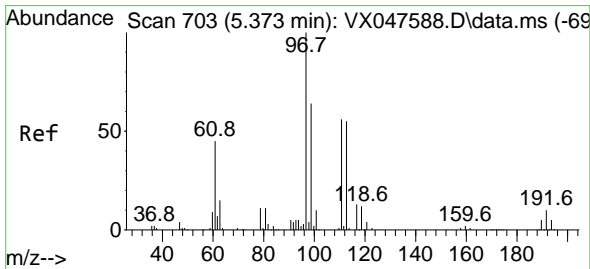
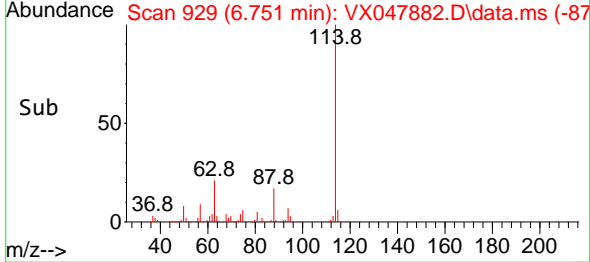
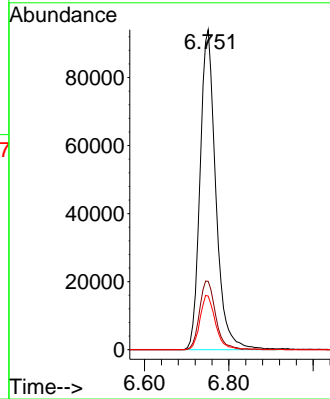


#34
 1,4-Difluorobenzene
 Concen: 50.000 ug/l
 RT: 6.751 min Scan# 91
 Delta R.T. 0.006 min
 Lab File: VX047882.D
 Acq: 29 Sep 2025 14:38

Instrument : MSVOA_X
 ClientSampleId : RW9-MW01D3-20250918

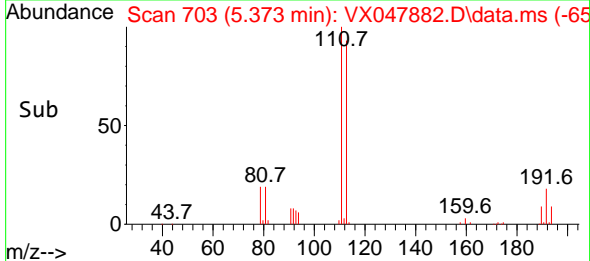
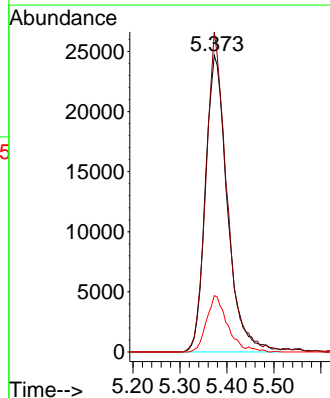
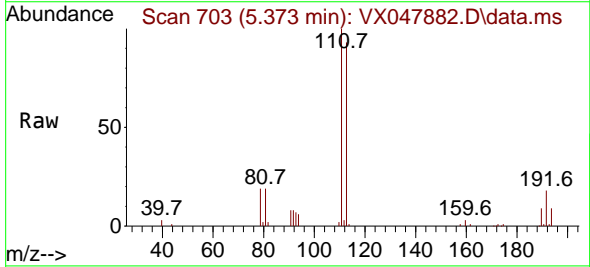


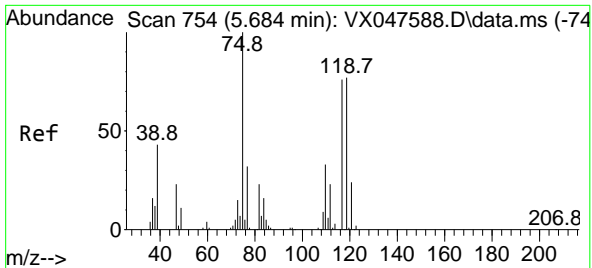
Tgt Ion:114 Resp: 244768
 Ion Ratio Lower Upper
 114 100
 63 21.4 0.0 44.0
 88 16.7 0.0 34.2



#35
 Dibromofluoromethane
 Concen: 48.852 ug/l
 RT: 5.373 min Scan# 703
 Delta R.T. 0.000 min
 Lab File: VX047882.D
 Acq: 29 Sep 2025 14:38

Tgt Ion:113 Resp: 80193
 Ion Ratio Lower Upper
 113 100
 111 102.6 80.9 121.3
 192 17.5 14.2 21.4



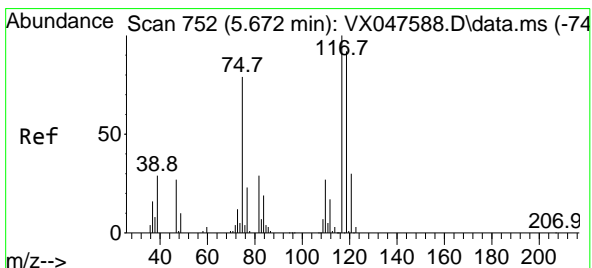
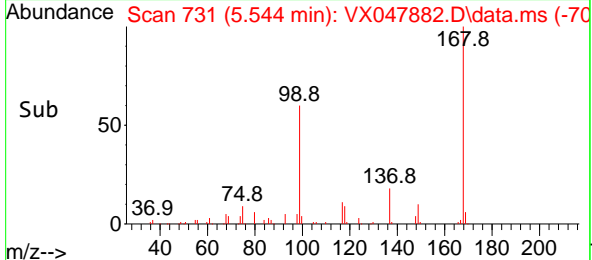
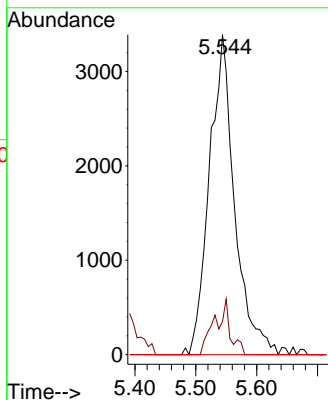
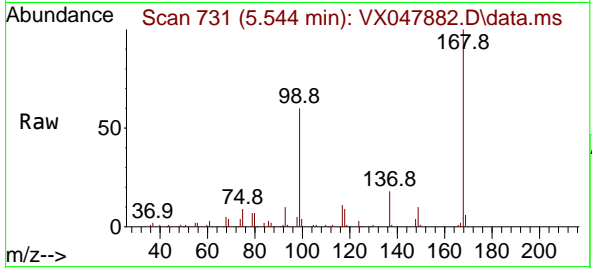


#36
 1,1-Dichloropropene
 Concen: 4.078 ug/l
 RT: 5.544 min Scan# 711
 Delta R.T. -0.140 min
 Lab File: VX047882.D
 Acq: 29 Sep 2025 14:38

Instrument : MSVOA_X
 ClientSampleId : RW9-MW01D3-20250918

Tgt Ion: 75 Resp: 9781

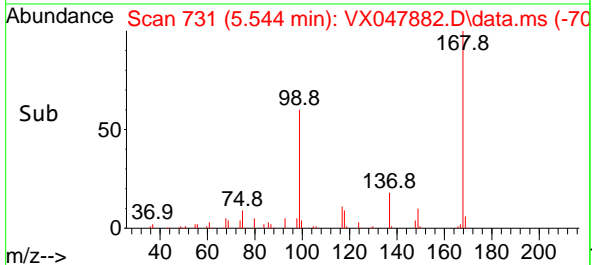
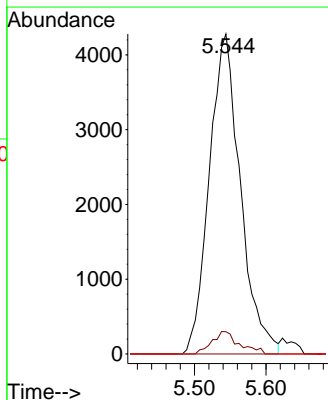
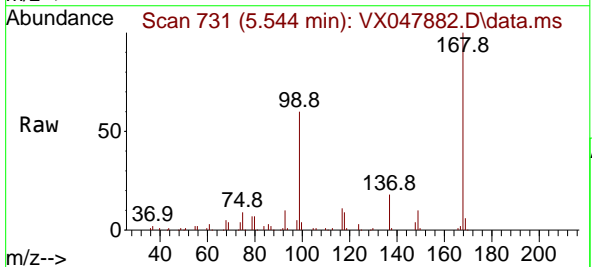
Ion	Ratio	Lower	Upper
75	100		
110	10.8	16.7	50.1#
77	0.0	24.3	36.5#

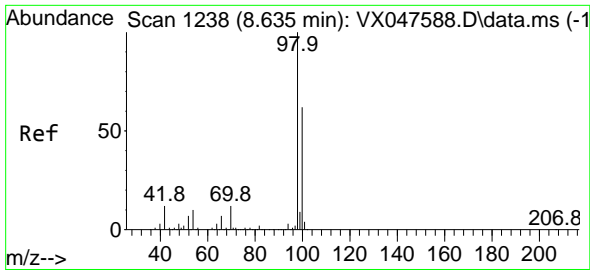


#38
 Carbon Tetrachloride
 Concen: 4.962 ug/l
 RT: 5.544 min Scan# 731
 Delta R.T. -0.128 min
 Lab File: VX047882.D
 Acq: 29 Sep 2025 14:38

Tgt Ion: 117 Resp: 12931

Ion	Ratio	Lower	Upper
117	100		
119	6.9	73.4	110.2#
121	0.0	23.8	35.6#

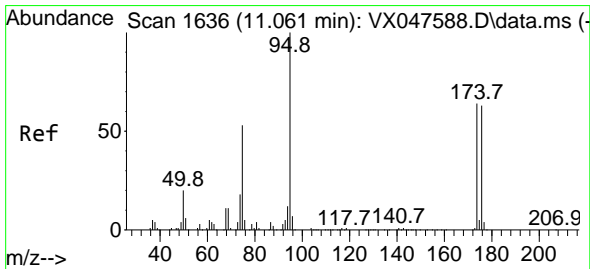
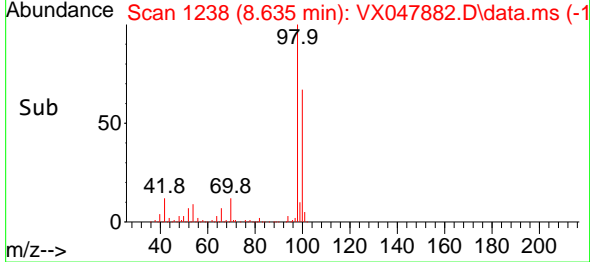
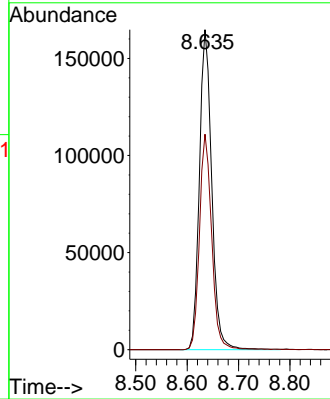
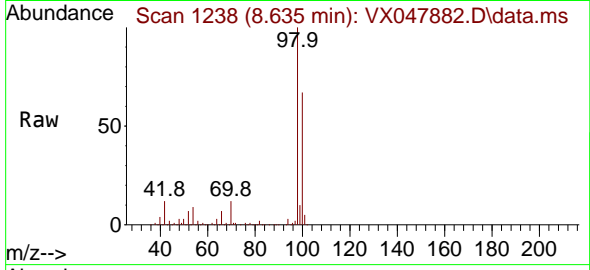




#50
 Toluene-d8
 Concen: 48.273 ug/l
 RT: 8.635 min Scan# 11
 Delta R.T. 0.000 min
 Lab File: VX047882.D
 Acq: 29 Sep 2025 14:38

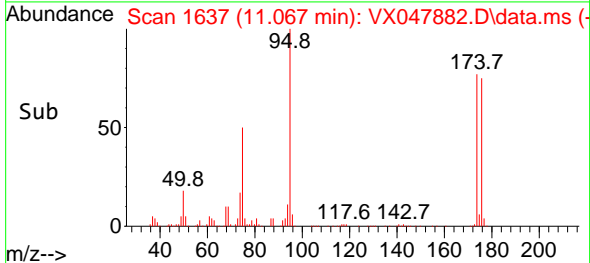
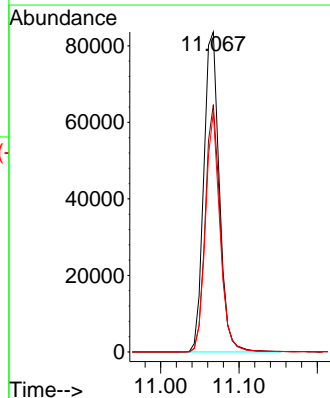
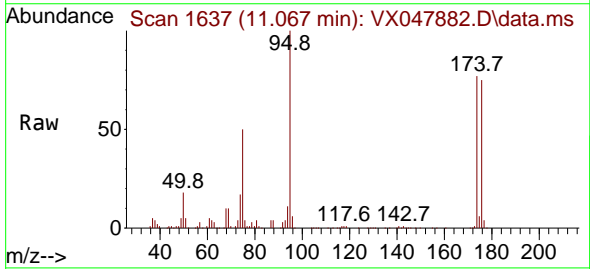
Instrument : MSVOA_X
 ClientSampleId : RW9-MW01D3-20250918

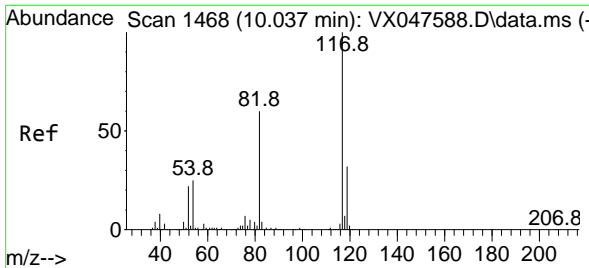
Tgt Ion: 98 Resp: 274193
 Ion Ratio Lower Upper
 98 100
 100 66.9 53.0 79.4



#62
 4-Bromofluorobenzene
 Concen: 53.351 ug/l
 RT: 11.067 min Scan# 1637
 Delta R.T. 0.006 min
 Lab File: VX047882.D
 Acq: 29 Sep 2025 14:38

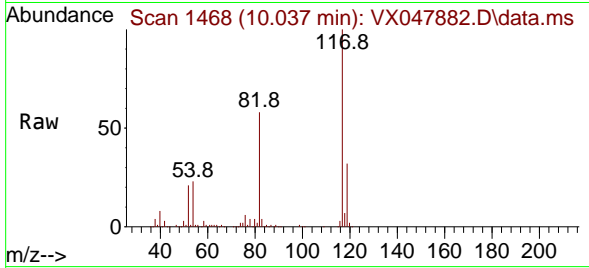
Tgt Ion: 95 Resp: 115008
 Ion Ratio Lower Upper
 95 100
 174 74.7 0.0 141.6
 176 70.1 0.0 138.4





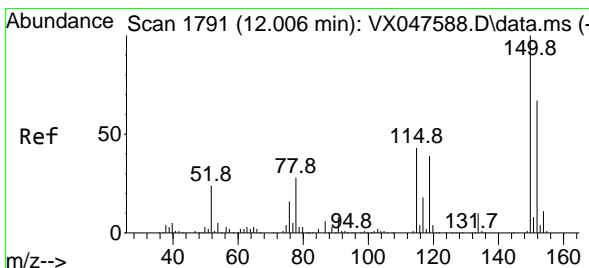
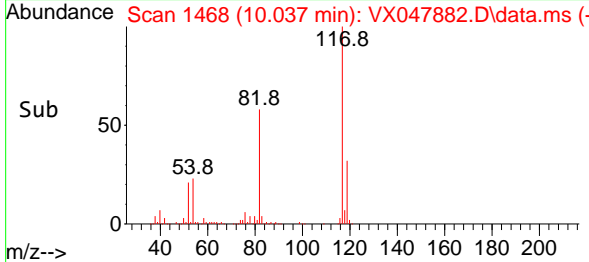
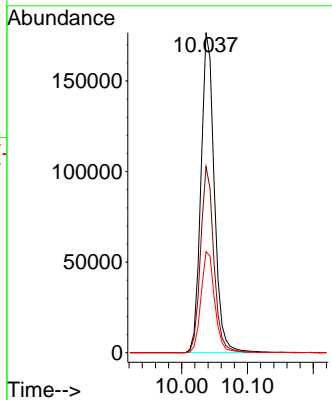
#63
 Chlorobenzene-d5
 Concen: 50.000 ug/l
 RT: 10.037 min Scan# 14
 Delta R.T. 0.000 min
 Lab File: VX047882.D
 Acq: 29 Sep 2025 14:38

Instrument : MSVOA_X
 ClientSampleId : RW9-MW01D3-20250918



Tgt Ion:117 Resp: 250385

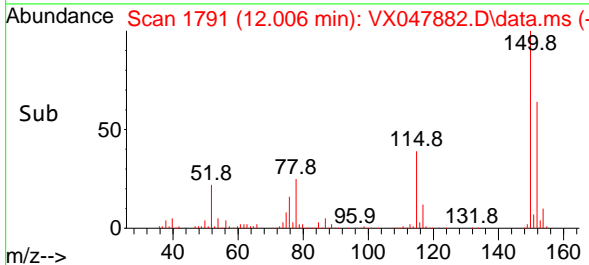
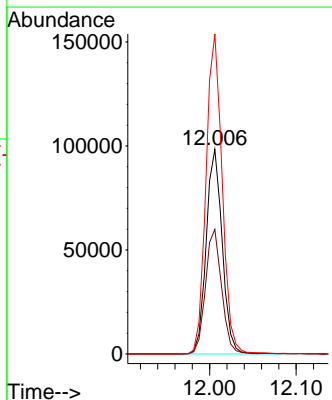
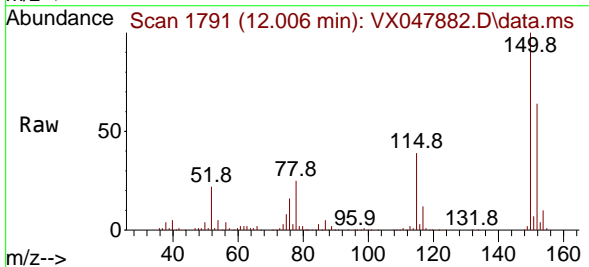
Ion	Ratio	Lower	Upper
117	100		
82	58.2	47.8	71.6
119	31.6	25.2	37.8

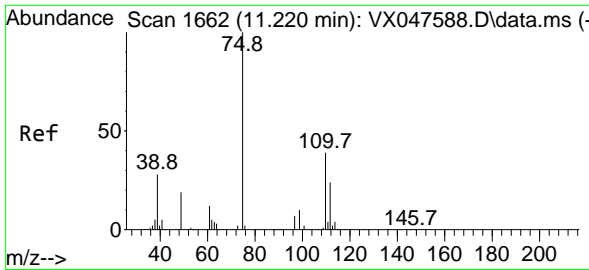


#72
 1,4-Dichlorobenzene-d4
 Concen: 50.000 ug/l
 RT: 12.006 min Scan# 1791
 Delta R.T. 0.000 min
 Lab File: VX047882.D
 Acq: 29 Sep 2025 14:38

Tgt Ion:152 Resp: 126372

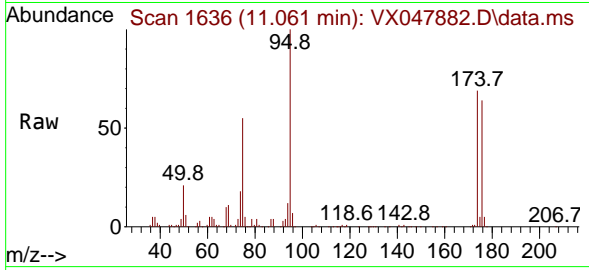
Ion	Ratio	Lower	Upper
152	100		
115	61.3	44.9	134.5
150	158.0	0.0	352.0



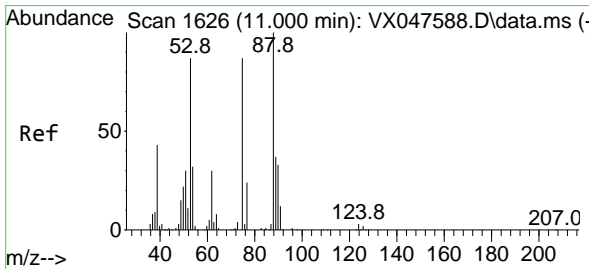
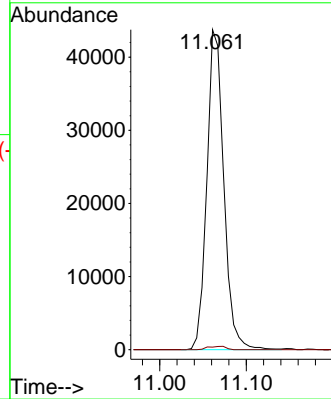
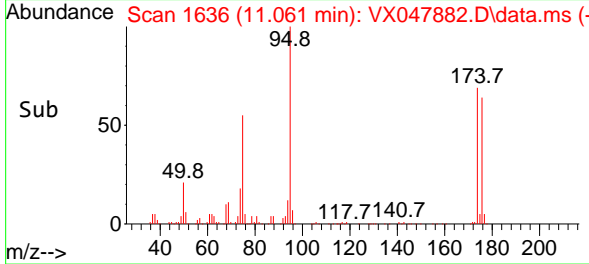


#76
 1,2,3-Trichloropropane
 Concen: 23.215 ug/l
 RT: 11.061 min Scan# 1636
 Delta R.T. -0.159 min
 Lab File: VX047882.D
 Acq: 29 Sep 2025 14:38

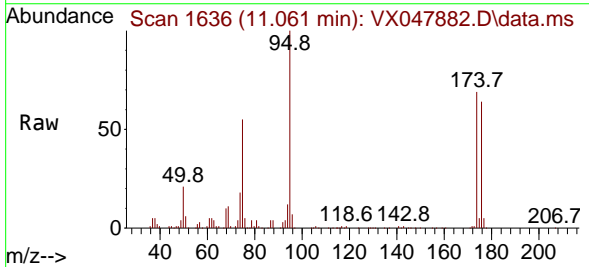
Instrument : MSVOA_X
 ClientSampleId : RW9-MW01D3-20250918



Tgt Ion: 75 Resp: 59399
 Ion Ratio Lower Upper
 75 100
 77 1.1 18.8 56.4#



#81
 trans-1,4-Dichloro-2-butene
 Concen: 59.202 ug/l
 RT: 11.061 min Scan# 1636
 Delta R.T. 0.061 min
 Lab File: VX047882.D
 Acq: 29 Sep 2025 14:38



Tgt Ion: 75 Resp: 59399
 Ion Ratio Lower Upper
 75 100
 53 0.0 83.4 125.2#
 89 0.0 36.3 54.5#

