

Data Path : Z:\voasrv\HPCHEM1\MSVOA_X\Data\VX092925\
 Data File : VX047883.D
 Acq On : 29 Sep 2025 14:59
 Operator : JC/MD
 Sample : Q3156-23
 Misc : 5.0mL/MSVOA_X/WATER
 ALS Vial : 17 Sample Multiplier: 1

Instrument :
 MSVOA_X
 ClientSampleId :
 RW9-MW01D2-20250919

Quant Time: Sep 30 01:21:42 2025
 Quant Method : Z:\voasrv\HPCHEM1\MSVOA_X\Method\82X091625W.M
 Quant Title : SW846 8260
 QLast Update : Wed Sep 17 06:39:58 2025
 Response via : Initial Calibration

Compound	R.T.	QIon	Response	Conc	Units	Dev(Min)

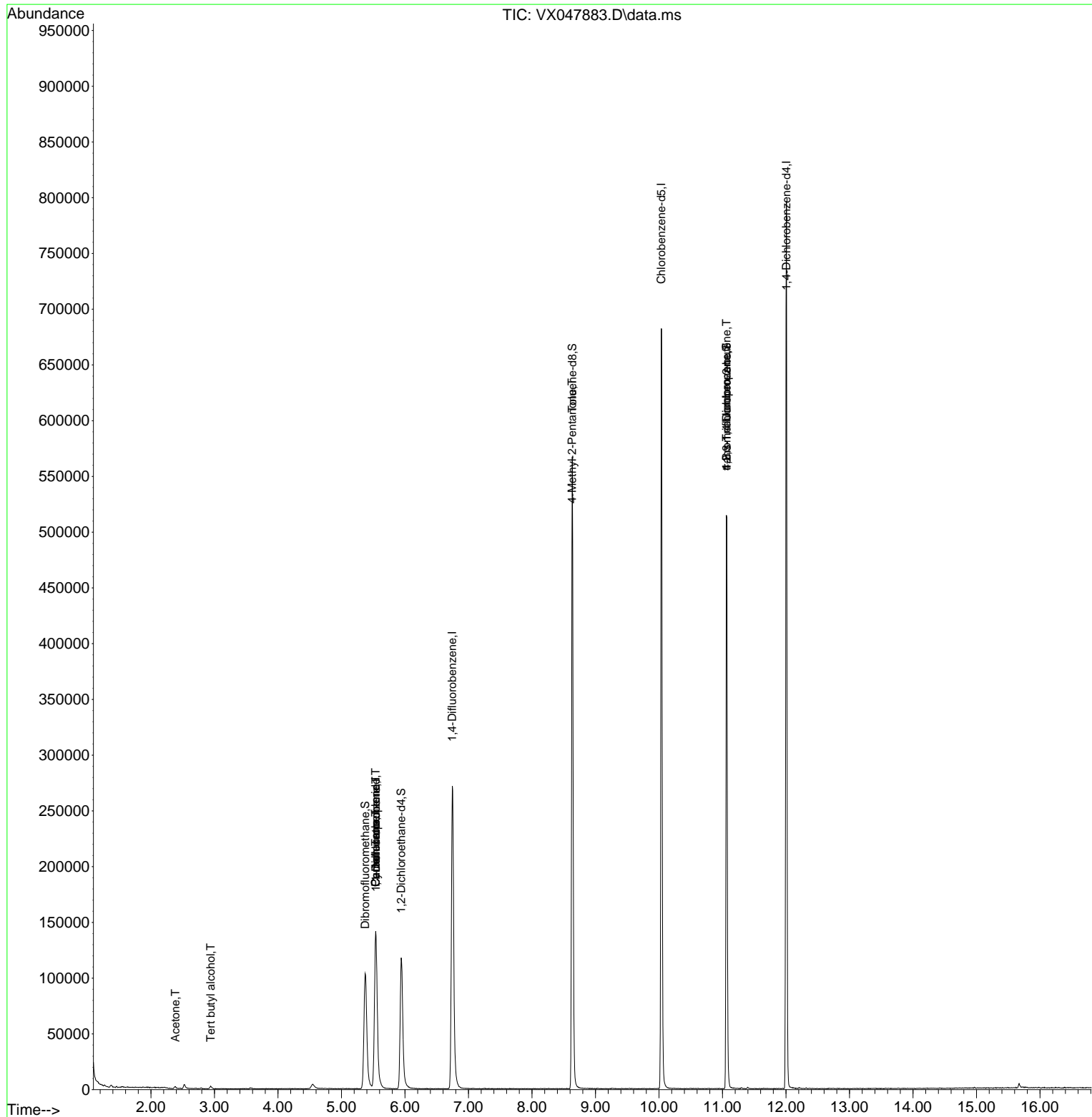
Internal Standards						
1) Pentafluorobenzene	5.538	168	142790	50.000	ug/l	0.00
34) 1,4-Difluorobenzene	6.745	114	301628	50.000	ug/l	0.00
63) Chlorobenzene-d5	10.037	117	311543	50.000	ug/l	0.00
72) 1,4-Dichlorobenzene-d4	12.006	152	162191	50.000	ug/l	0.00
System Monitoring Compounds						
33) 1,2-Dichloroethane-d4	5.940	65	129458	56.958	ug/l	0.00
Spiked Amount	50.000	Range 78 - 117	Recovery	=	113.920%	
35) Dibromofluoromethane	5.373	113	102778	50.808	ug/l	0.00
Spiked Amount	50.000	Range 75 - 124	Recovery	=	101.620%	
50) Toluene-d8	8.635	98	346965	49.569	ug/l	0.00
Spiked Amount	50.000	Range 92 - 112	Recovery	=	99.140%	
62) 4-Bromofluorobenzene	11.061	95	151935	57.194	ug/l	0.00
Spiked Amount	50.000	Range 83 - 123	Recovery	=	114.380%	
Target Compounds						
						Qvalue
11) Tert butyl alcohol	2.941	59	1026	4.053	ug/l #	72
16) Acetone	2.386	43	2333	2.361	ug/l #	87
31) Cyclohexane	5.538	56	3126	1.041	ug/l #	1
36) 1,1-Dichloropropene	5.544	75	12266	4.150	ug/l #	51
38) Carbon Tetrachloride	5.538	117	15223	4.740	ug/l #	19
51) 4-Methyl-2-Pentanone	8.629	43	1581	0.549	ug/l #	1
76) 1,2,3-Trichloropropane	11.061	75	77698	23.661	ug/l #	39
81) trans-1,4-Dichloro-2-b...	11.061	75	77698	60.338	ug/l #	8

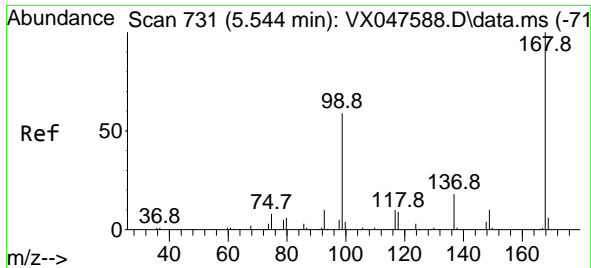
(#) = qualifier out of range (m) = manual integration (+) = signals summed

Data Path : Z:\voasrv\HPCHEM1\MSVOA_X\Data\VX092925\
 Data File : VX047883.D
 Acq On : 29 Sep 2025 14:59
 Operator : JC/MD
 Sample : Q3156-23
 Misc : 5.0mL/MSVOA_X/WATER
 ALS Vial : 17 Sample Multiplier: 1

Instrument :
 MSVOA_X
 ClientSampleId :
 RW9-MW01D2-20250919

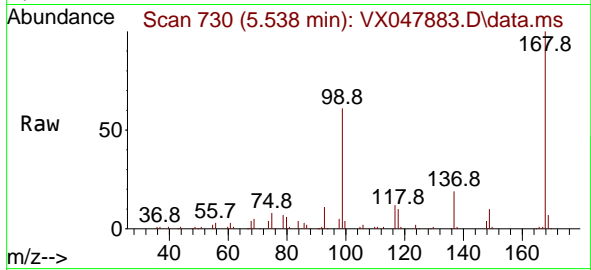
Quant Time: Sep 30 01:21:42 2025
 Quant Method : Z:\voasrv\HPCHEM1\MSVOA_X\Method\82X091625W.M
 Quant Title : SW846 8260
 QLast Update : Wed Sep 17 06:39:58 2025
 Response via : Initial Calibration



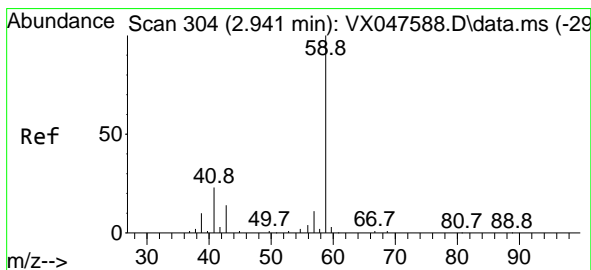
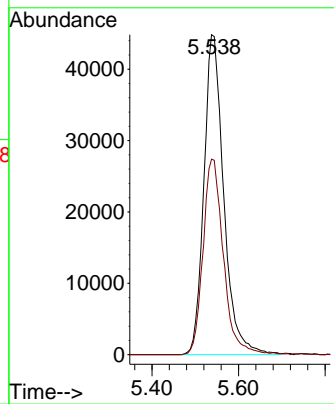
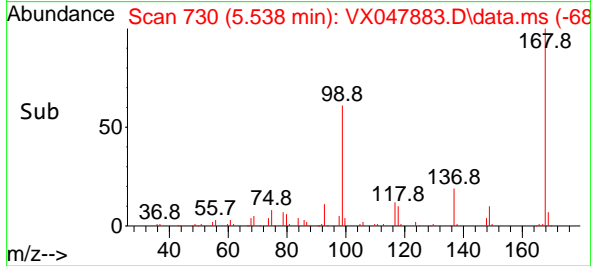


#1
 Pentafluorobenzene
 Concen: 50.000 ug/l
 RT: 5.538 min Scan# 71
 Delta R.T. -0.006 min
 Lab File: VX047883.D
 Acq: 29 Sep 2025 14:59

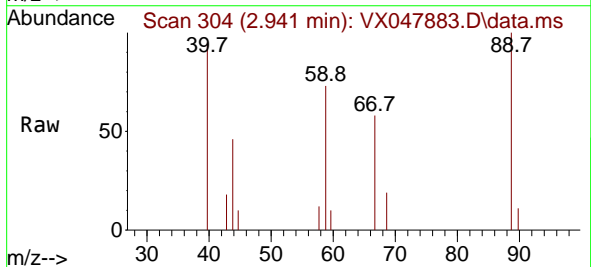
Instrument : MSVOA_X
 ClientSampleId : RW9-MW01D2-20250919



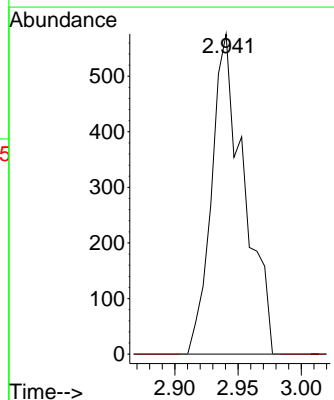
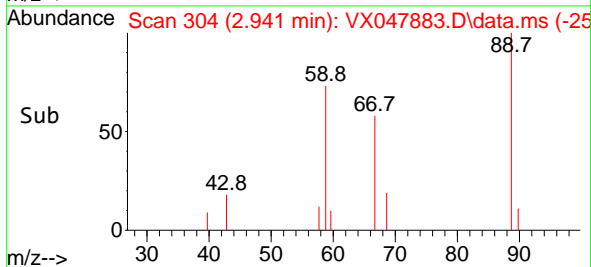
Tgt Ion:168 Resp: 142790
 Ion Ratio Lower Upper
 168 100
 99 61.1 48.8 73.2

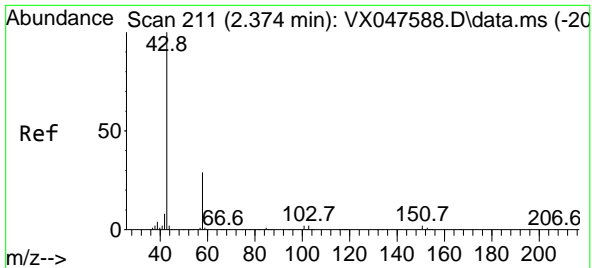


#11
 Tert butyl alcohol
 Concen: 4.053 ug/l
 RT: 2.941 min Scan# 304
 Delta R.T. -0.000 min
 Lab File: VX047883.D
 Acq: 29 Sep 2025 14:59



Tgt Ion: 59 Resp: 1026
 Ion Ratio Lower Upper
 59 100
 57 0.0 8.3 12.5#

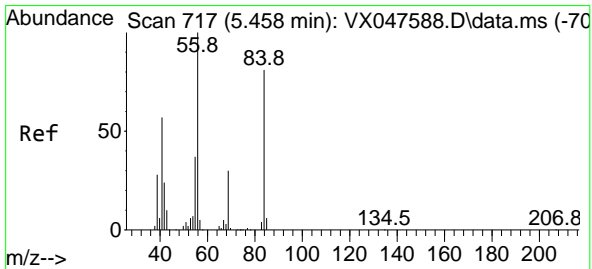
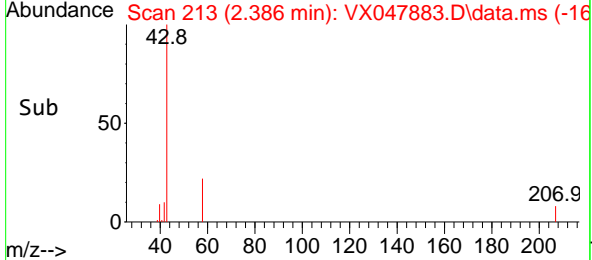
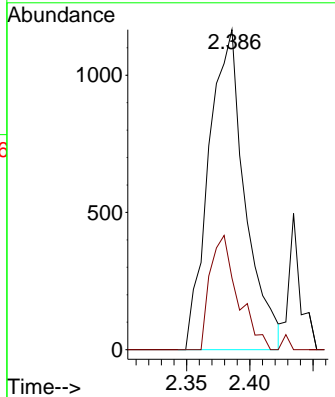
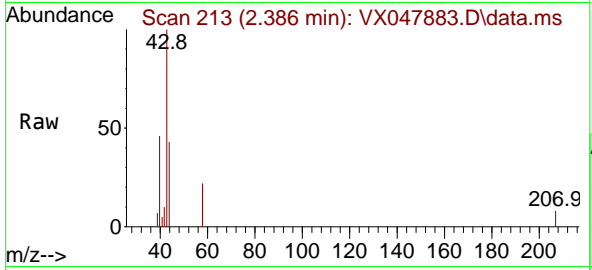




#16
 Acetone
 Concen: 2.361 ug/l
 RT: 2.386 min Scan# 211
 Delta R.T. 0.012 min
 Lab File: VX047883.D
 Acq: 29 Sep 2025 14:59

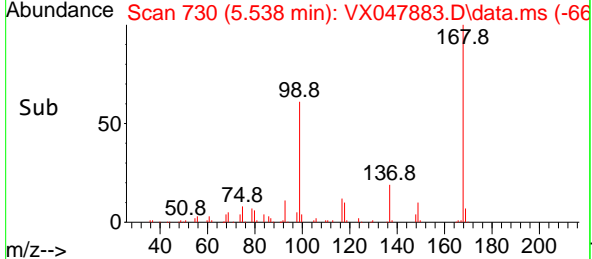
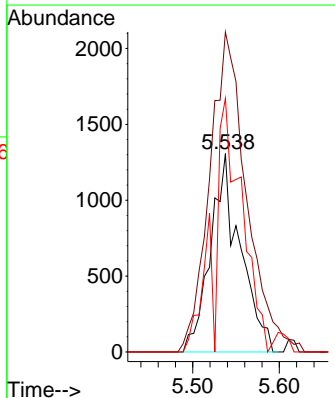
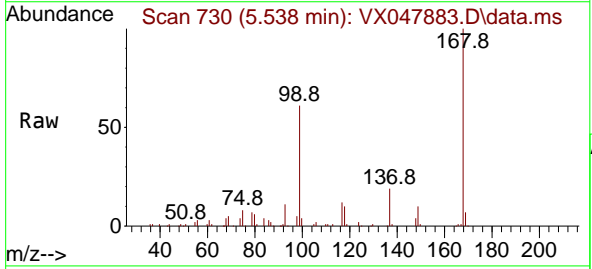
Instrument : MSVOA_X
 ClientSampleId : RW9-MW01D2-20250919

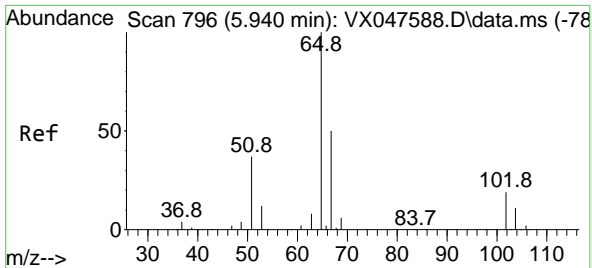
Tgt Ion: 43 Resp: 2333
 Ion Ratio Lower Upper
 43 100
 58 22.4 23.4 35.0#



#31
 Cyclohexane
 Concen: 1.041 ug/l
 RT: 5.538 min Scan# 730
 Delta R.T. 0.079 min
 Lab File: VX047883.D
 Acq: 29 Sep 2025 14:59

Tgt Ion: 56 Resp: 3126
 Ion Ratio Lower Upper
 56 100
 69 161.2 23.8 35.8#
 84 127.8 64.6 97.0#

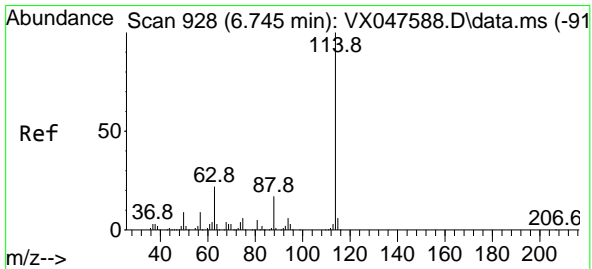
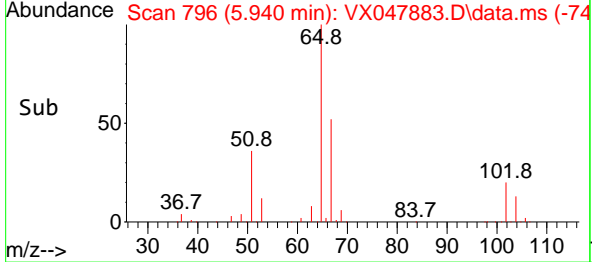
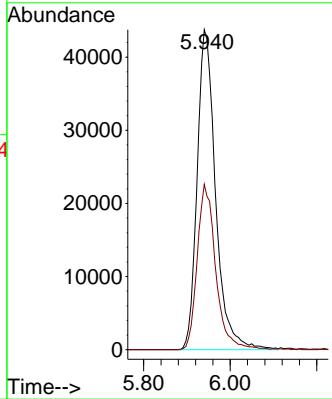
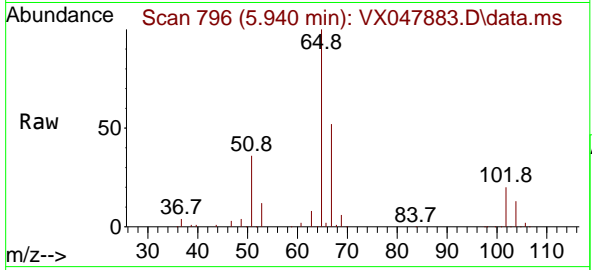




#33
 1,2-Dichloroethane-d4
 Concen: 56.958 ug/l
 RT: 5.940 min Scan# 796
 Delta R.T. -0.000 min
 Lab File: VX047883.D
 Acq: 29 Sep 2025 14:59

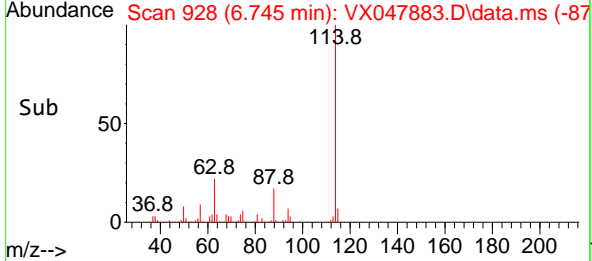
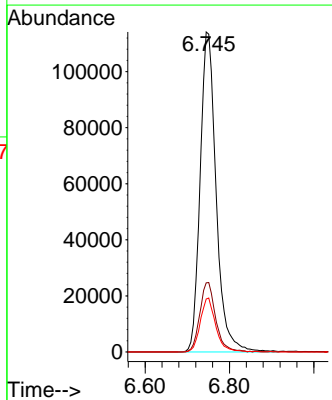
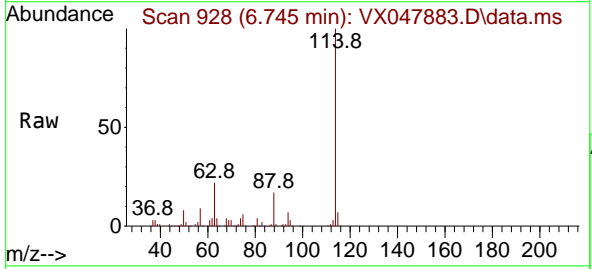
Instrument : MSVOA_X
 ClientSampleId : RW9-MW01D2-20250919

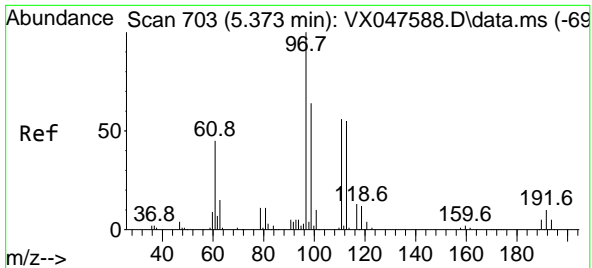
Tgt Ion: 65 Resp: 129458
 Ion Ratio Lower Upper
 65 100
 67 51.8 0.0 103.0



#34
 1,4-Difluorobenzene
 Concen: 50.000 ug/l
 RT: 6.745 min Scan# 928
 Delta R.T. -0.000 min
 Lab File: VX047883.D
 Acq: 29 Sep 2025 14:59

Tgt Ion: 114 Resp: 301628
 Ion Ratio Lower Upper
 114 100
 63 21.6 0.0 44.0
 88 16.5 0.0 34.2



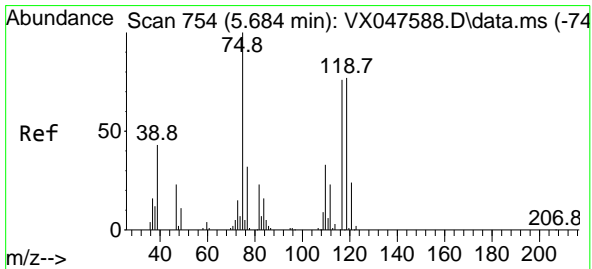
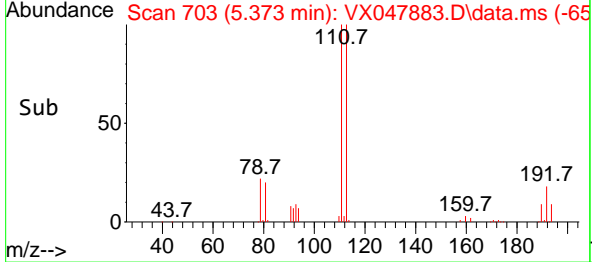
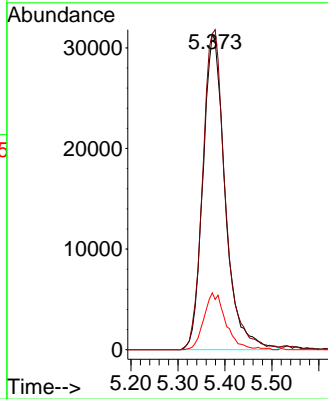
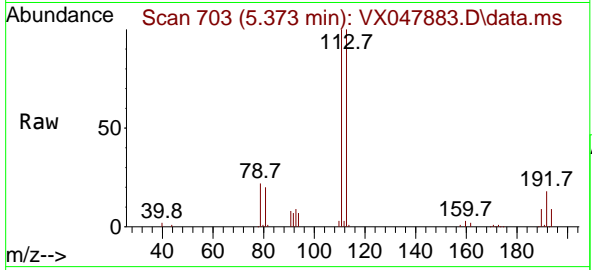


#35
 Dibromofluoromethane
 Concen: 50.808 ug/l
 RT: 5.373 min Scan# 703
 Delta R.T. 0.000 min
 Lab File: VX047883.D
 Acq: 29 Sep 2025 14:59

Instrument : MSVOA_X
 ClientSampleId : RW9-MW01D2-20250919

Tgt Ion: 113 Resp: 102778

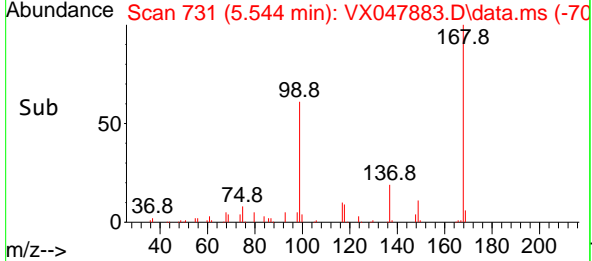
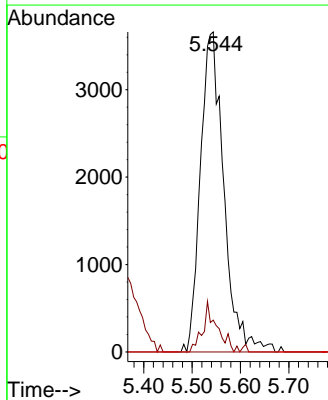
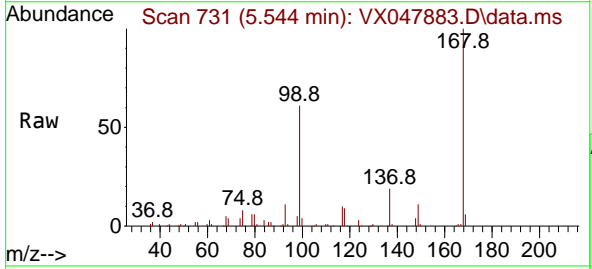
Ion	Ratio	Lower	Upper
113	100		
111	102.6	80.9	121.3
192	17.6	14.2	21.4

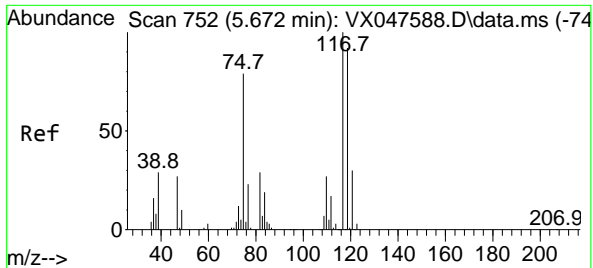


#36
 1,1-Dichloropropene
 Concen: 4.150 ug/l
 RT: 5.544 min Scan# 731
 Delta R.T. -0.140 min
 Lab File: VX047883.D
 Acq: 29 Sep 2025 14:59

Tgt Ion: 75 Resp: 12266

Ion	Ratio	Lower	Upper
75	100		
110	9.5	16.7	50.1#
77	0.0	24.3	36.5#



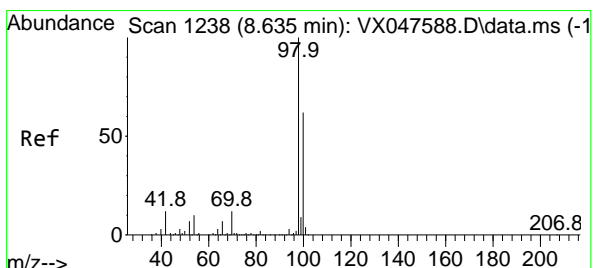
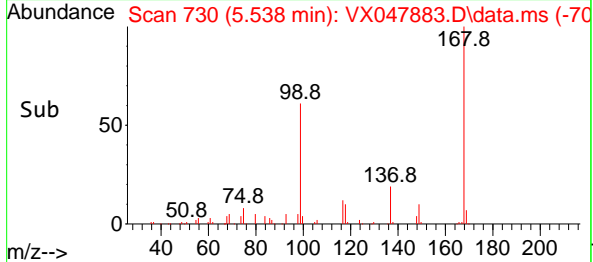
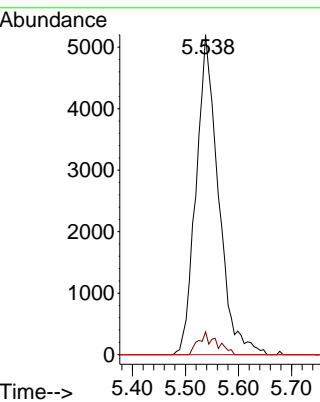
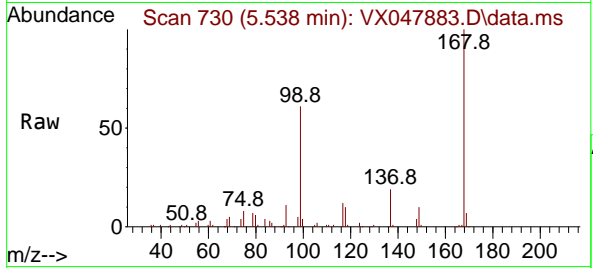


#38
 Carbon Tetrachloride
 Concen: 4.740 ug/l
 RT: 5.538 min Scan# 71
 Delta R.T. -0.134 min
 Lab File: VX047883.D
 Acq: 29 Sep 2025 14:59

Instrument : MSVOA_X
 ClientSampleId : RW9-MW01D2-20250919

Tgt Ion: 117 Resp: 15223

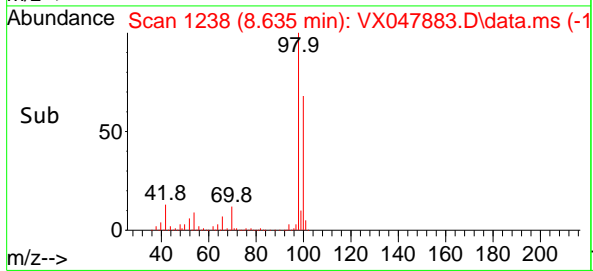
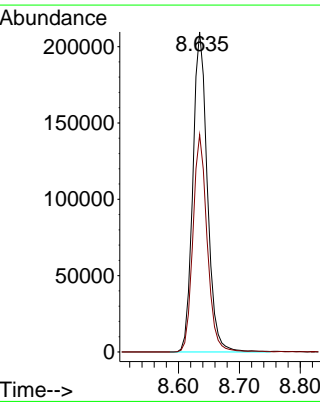
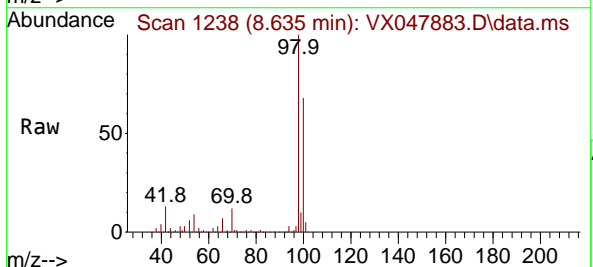
Ion	Ratio	Lower	Upper
117	100		
119	7.1	73.4	110.2#
121	0.0	23.8	35.6#

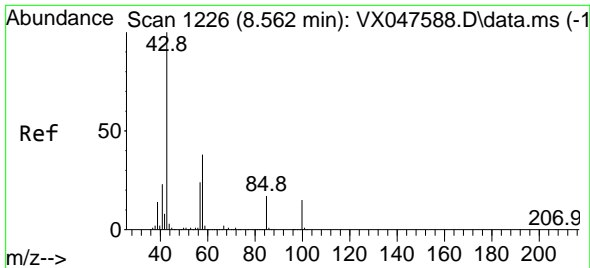


#50
 Toluene-d8
 Concen: 49.569 ug/l
 RT: 8.635 min Scan# 1238
 Delta R.T. -0.000 min
 Lab File: VX047883.D
 Acq: 29 Sep 2025 14:59

Tgt Ion: 98 Resp: 346965

Ion	Ratio	Lower	Upper
98	100		
100	66.4	53.0	79.4

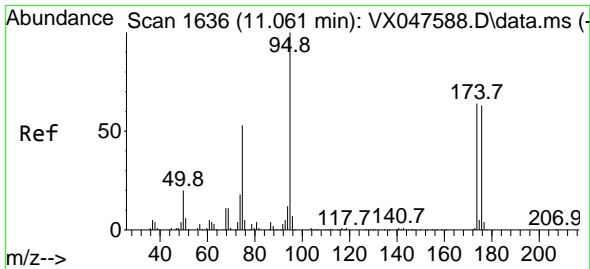
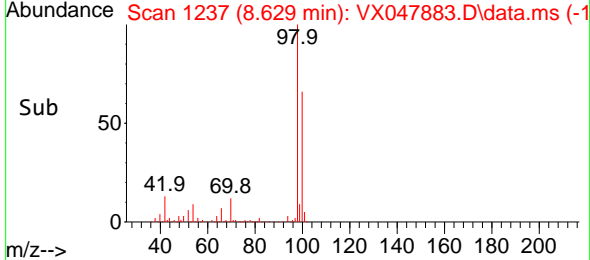
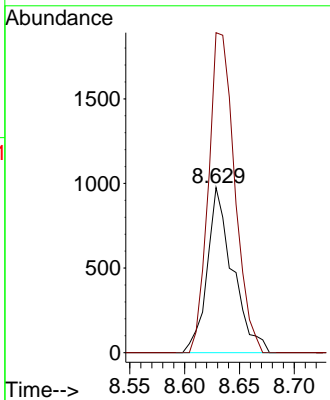
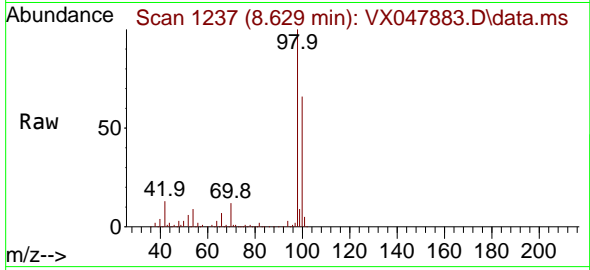




#51
 4-Methyl-2-Pentanone
 Concen: 0.549 ug/l
 RT: 8.629 min Scan# 11
 Delta R.T. 0.067 min
 Lab File: VX047883.D
 Acq: 29 Sep 2025 14:59

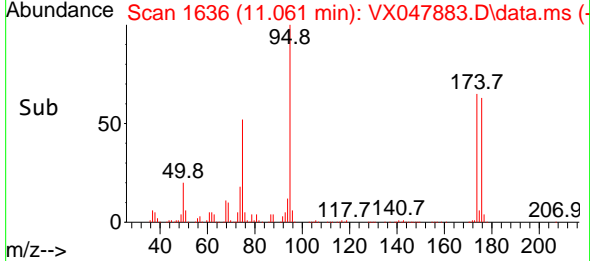
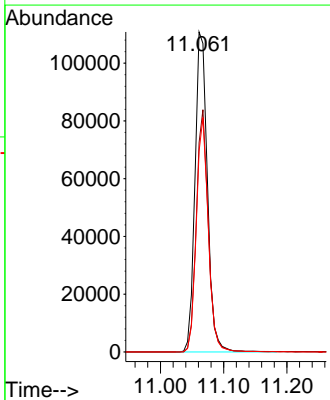
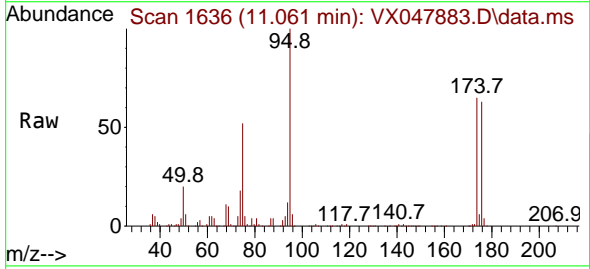
Instrument : MSVOA_X
 ClientSampleId : RW9-MW01D2-20250919

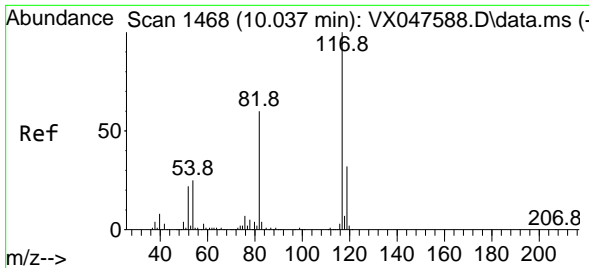
Tgt Ion: 43 Resp: 1581
 Ion Ratio Lower Upper
 43 100
 58 198.7 30.3 45.5#



#62
 4-Bromofluorobenzene
 Concen: 57.194 ug/l
 RT: 11.061 min Scan# 1636
 Delta R.T. -0.000 min
 Lab File: VX047883.D
 Acq: 29 Sep 2025 14:59

Tgt Ion: 95 Resp: 151935
 Ion Ratio Lower Upper
 95 100
 174 72.9 0.0 141.6
 176 70.5 0.0 138.4



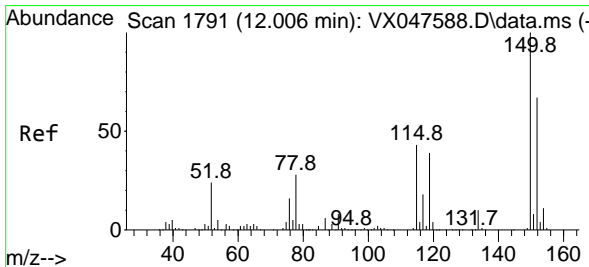
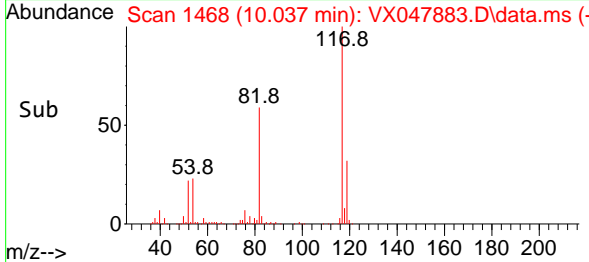
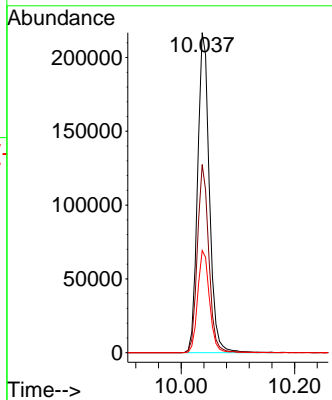
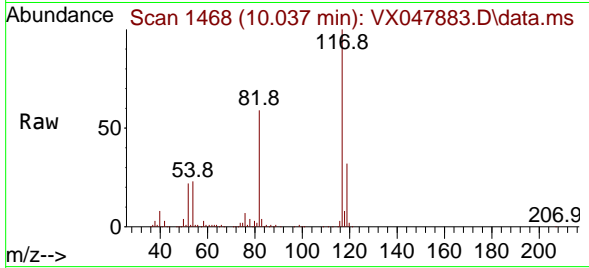


#63
 Chlorobenzene-d5
 Concen: 50.000 ug/l
 RT: 10.037 min Scan# 1468
 Delta R.T. 0.000 min
 Lab File: VX047883.D
 Acq: 29 Sep 2025 14:59

Instrument :
 MSVOA_X
ClientSampleId :
 RW9-MW01D2-20250919

Tgt Ion:117 Resp: 311543

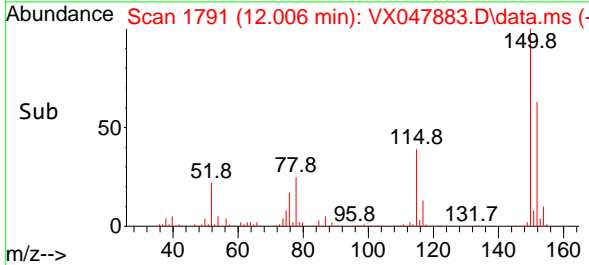
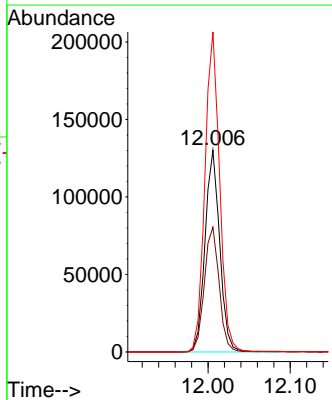
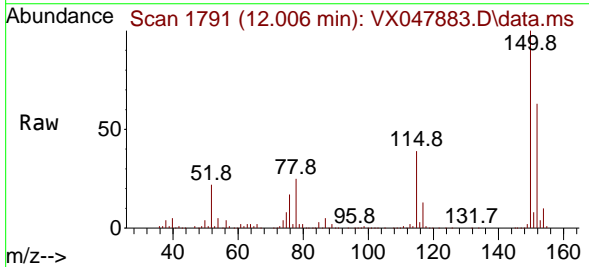
Ion	Ratio	Lower	Upper
117	100		
82	58.8	47.8	71.6
119	31.9	25.2	37.8

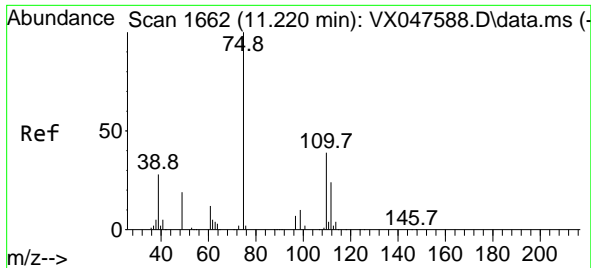


#72
 1,4-Dichlorobenzene-d4
 Concen: 50.000 ug/l
 RT: 12.006 min Scan# 1791
 Delta R.T. -0.000 min
 Lab File: VX047883.D
 Acq: 29 Sep 2025 14:59

Tgt Ion:152 Resp: 162191

Ion	Ratio	Lower	Upper
152	100		
115	62.4	44.9	134.5
150	158.4	0.0	352.0

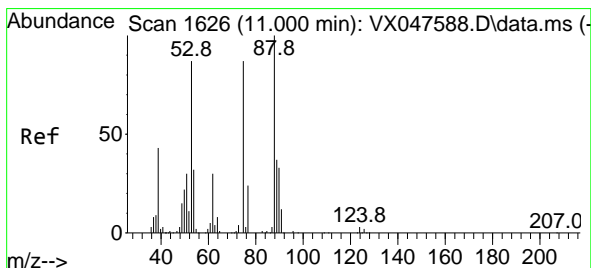
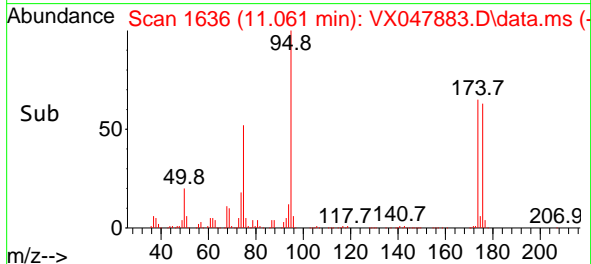
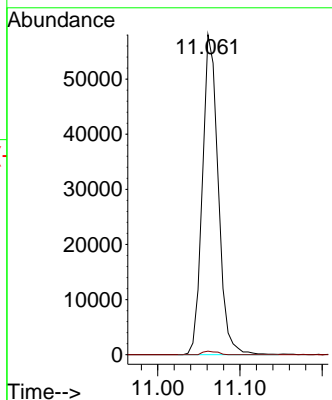
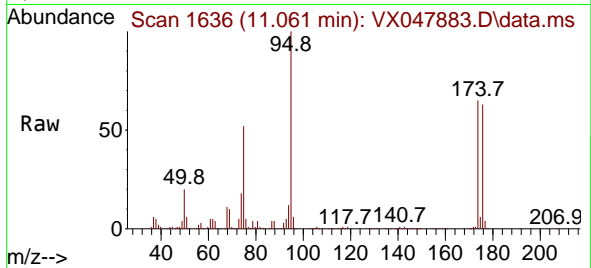




#76
 1,2,3-Trichloropropane
 Concen: 23.661 ug/l
 RT: 11.061 min Scan# 1636
 Delta R.T. -0.159 min
 Lab File: VX047883.D
 Acq: 29 Sep 2025 14:59

Instrument : MSVOA_X
 ClientSampleId : RW9-MW01D2-20250919

Tgt Ion: 75 Resp: 77698
 Ion Ratio Lower Upper
 75 100
 77 1.0 18.8 56.4#



#81
 trans-1,4-Dichloro-2-butene
 Concen: 60.338 ug/l
 RT: 11.061 min Scan# 1636
 Delta R.T. 0.061 min
 Lab File: VX047883.D
 Acq: 29 Sep 2025 14:59

Tgt Ion: 75 Resp: 77698
 Ion Ratio Lower Upper
 75 100
 53 0.0 83.4 125.2#
 89 0.0 36.3 54.5#

