

Data Path : Z:\voasrv\HPCHEM1\MSVOA\_X\Data\VX092925\  
 Data File : VX047886.D  
 Acq On : 29 Sep 2025 16:02  
 Operator : JC/MD  
 Sample : Q3213-03  
 Misc : 5.0mL/MSVOA\_X/WATER  
 ALS Vial : 20 Sample Multiplier: 1

Instrument :  
 MSVOA\_X  
 ClientSampleId :  
 BP-VPB-184-GW-340-342

Quant Time: Sep 30 01:22:59 2025  
 Quant Method : Z:\voasrv\HPCHEM1\MSVOA\_X\Method\82X091625W.M  
 Quant Title : SW846 8260  
 QLast Update : Wed Sep 17 06:39:58 2025  
 Response via : Initial Calibration

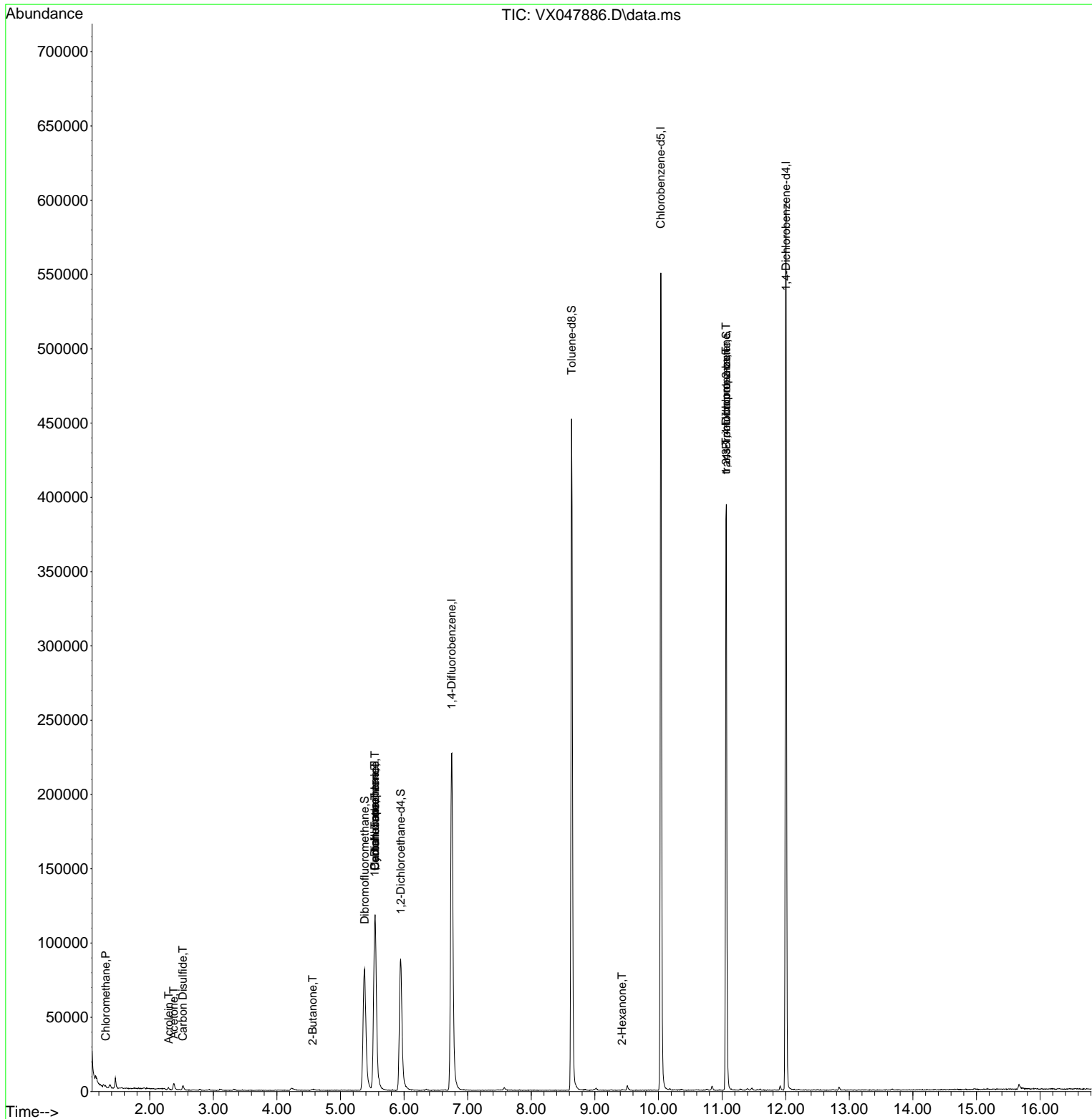
Compound	R.T.	QIon	Response	Conc	Units	Dev(Min)
-----						
Internal Standards						
1) Pentafluorobenzene	5.544	168	121262	50.000	ug/l	0.00
34) 1,4-Difluorobenzene	6.745	114	250493	50.000	ug/l	0.00
63) Chlorobenzene-d5	10.037	117	252342	50.000	ug/l	0.00
72) 1,4-Dichlorobenzene-d4	12.006	152	126414	50.000	ug/l	0.00
System Monitoring Compounds						
33) 1,2-Dichloroethane-d4	5.946	65	96623	50.059	ug/l	0.00
Spiked Amount	50.000	Range 78 - 117	Recovery	=	100.120%	
35) Dibromofluoromethane	5.379	113	80030	47.639	ug/l	0.00
Spiked Amount	50.000	Range 75 - 124	Recovery	=	95.280%	
50) Toluene-d8	8.635	98	278316	47.879	ug/l	0.00
Spiked Amount	50.000	Range 92 - 112	Recovery	=	95.760%	
62) 4-Bromofluorobenzene	11.067	95	113538	51.465	ug/l	0.00
Spiked Amount	50.000	Range 83 - 123	Recovery	=	102.940%	
Target Compounds						
						Qvalue
3) Chloromethane	1.307	50	815	0.494	ug/l	93
13) Acrolein	2.300	56	53	0.268	ug/l #	66
16) Acetone	2.380	43	5987	7.134	ug/l	98
17) Carbon Disulfide	2.520	76	1904	0.483	ug/l	99
25) 2-Butanone	4.562	43	1166	1.114	ug/l #	50
31) Cyclohexane	5.544	56	2729	1.070	ug/l #	29
36) 1,1-Dichloropropene	5.538	75	10622	4.327	ug/l #	46
38) Carbon Tetrachloride	5.544	117	13070	4.900	ug/l #	16
59) 2-Hexanone	9.427	43	450	0.262	ug/l	64
76) 1,2,3-Trichloropropane	11.061	75	58777	22.964	ug/l #	39
81) trans-1,4-Dichloro-2-b...	11.061	75	58777	58.562	ug/l #	8
-----						

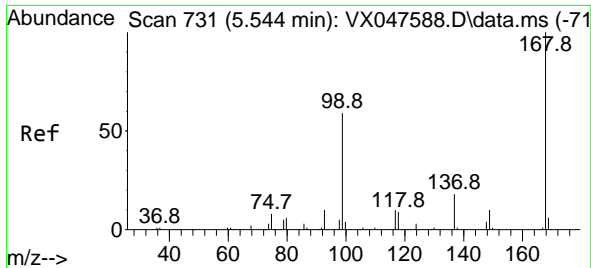
(#) = qualifier out of range (m) = manual integration (+) = signals summed

Data Path : Z:\voasrv\HPCHEM1\MSVOA\_X\Data\VX092925\  
 Data File : VX047886.D  
 Acq On : 29 Sep 2025 16:02  
 Operator : JC/MD  
 Sample : Q3213-03  
 Misc : 5.0mL/MSVOA\_X/WATER  
 ALS Vial : 20 Sample Multiplier: 1

Instrument :  
 MSVOA\_X  
 ClientSampleId :  
 BP-VPB-184-GW-340-342

Quant Time: Sep 30 01:22:59 2025  
 Quant Method : Z:\voasrv\HPCHEM1\MSVOA\_X\Method\82X091625W.M  
 Quant Title : SW846 8260  
 QLast Update : Wed Sep 17 06:39:58 2025  
 Response via : Initial Calibration

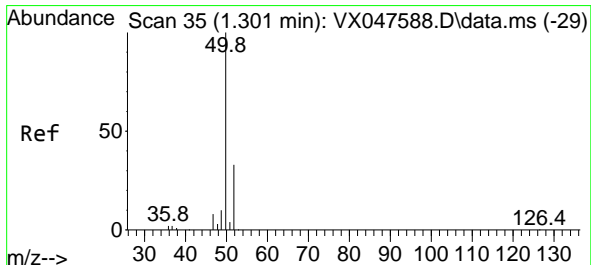
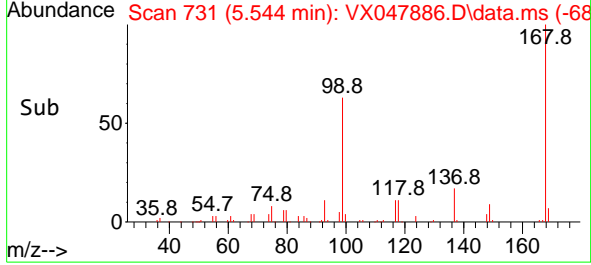
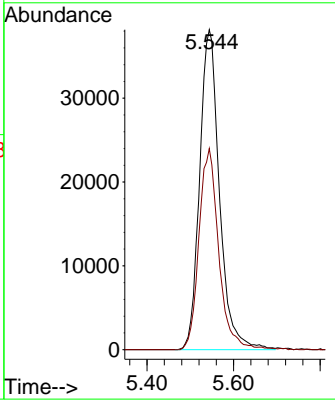
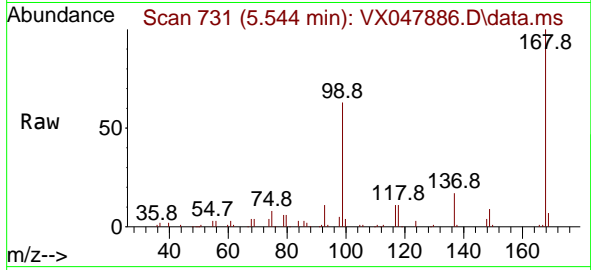




#1  
 Pentafluorobenzene  
 Concen: 50.000 ug/l  
 RT: 5.544 min Scan# 71  
 Delta R.T. -0.000 min  
 Lab File: VX047886.D  
 Acq: 29 Sep 2025 16:02

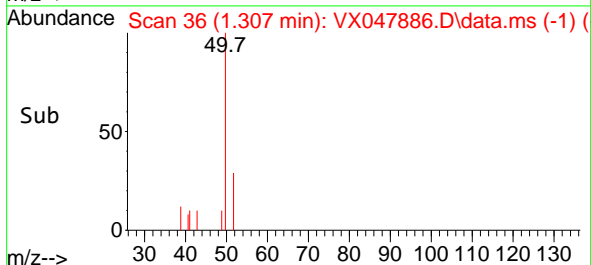
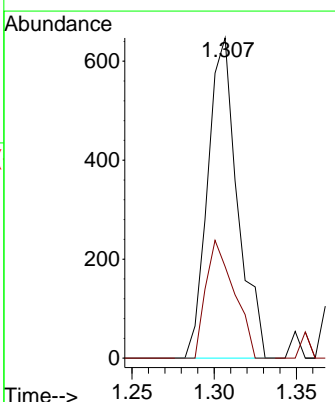
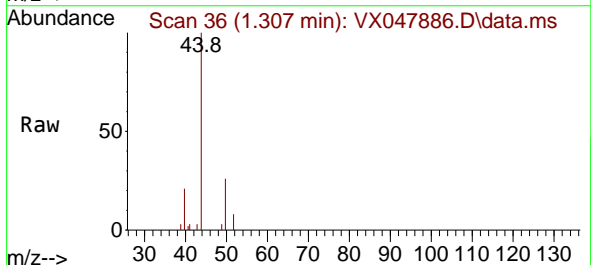
Instrument : MSVOA\_X  
 ClientSampleId : BP-VPB-184-GW-340-342

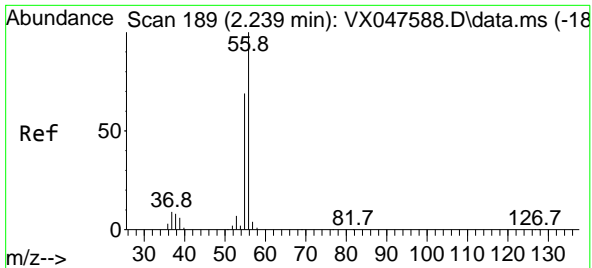
Tgt Ion:168 Resp: 121262  
 Ion Ratio Lower Upper  
 168 100  
 99 62.9 48.8 73.2



#3  
 Chloromethane  
 Concen: 0.494 ug/l  
 RT: 1.307 min Scan# 36  
 Delta R.T. 0.006 min  
 Lab File: VX047886.D  
 Acq: 29 Sep 2025 16:02

Tgt Ion: 50 Resp: 815  
 Ion Ratio Lower Upper  
 50 100  
 52 28.6 26.1 39.1

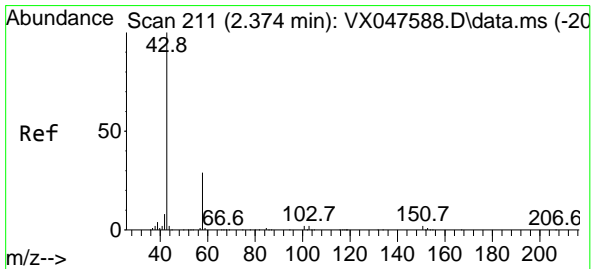
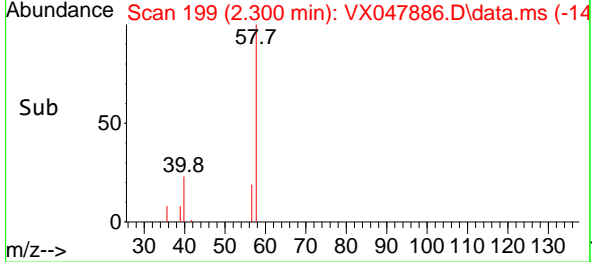
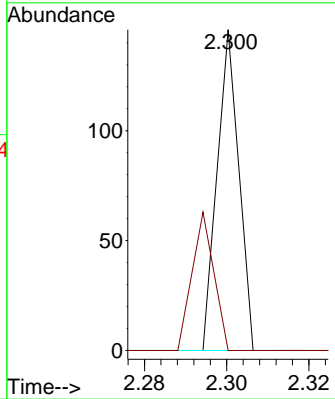
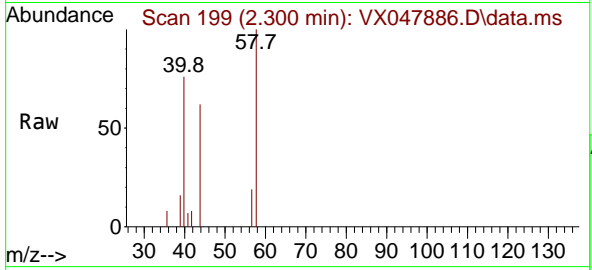




#13  
 Acrolein  
 Concen: 0.268 ug/l  
 RT: 2.300 min Scan# 199  
 Delta R.T. 0.061 min  
 Lab File: VX047886.D  
 Acq: 29 Sep 2025 16:02

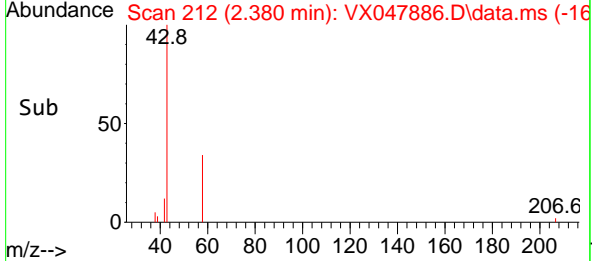
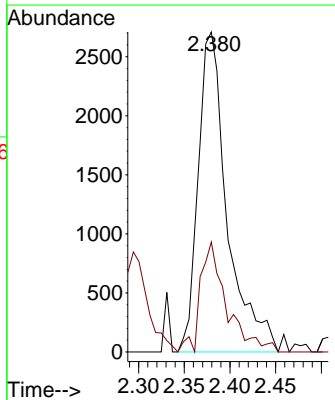
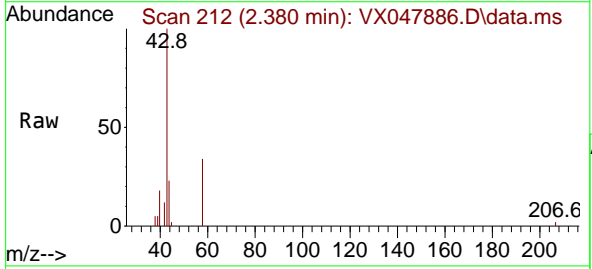
Instrument : MSVOA\_X  
 ClientSampleId : BP-VPB-184-GW-340-342

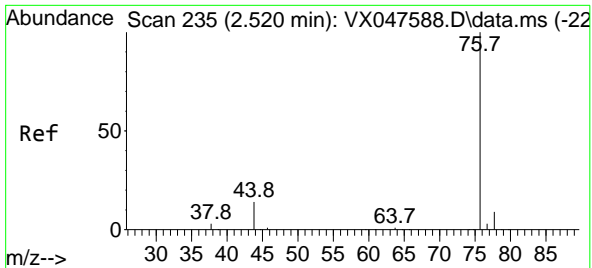
Tgt Ion: 56 Resp: 53  
 Ion Ratio Lower Upper  
 56 100  
 55 43.4 57.2 85.8#



#16  
 Acetone  
 Concen: 7.134 ug/l  
 RT: 2.380 min Scan# 212  
 Delta R.T. 0.006 min  
 Lab File: VX047886.D  
 Acq: 29 Sep 2025 16:02

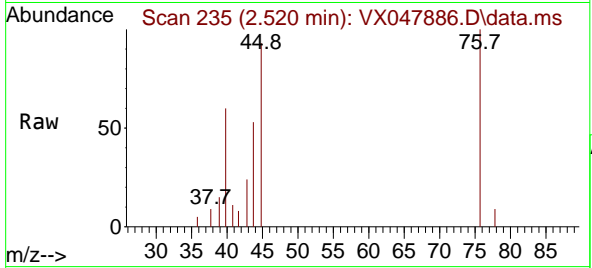
Tgt Ion: 43 Resp: 5987  
 Ion Ratio Lower Upper  
 43 100  
 58 28.0 23.4 35.0



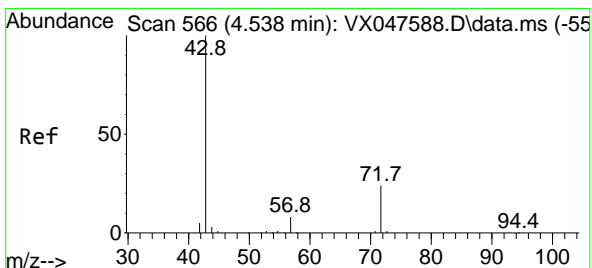
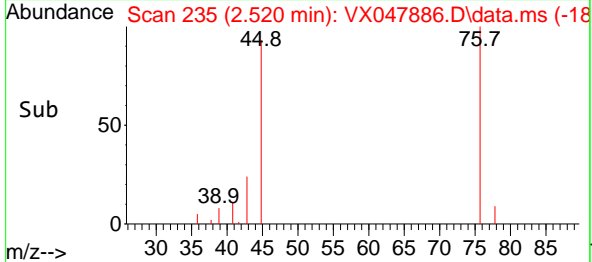
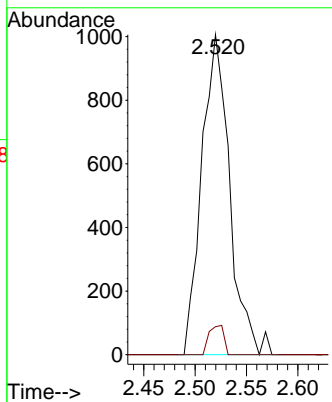


#17  
 Carbon Disulfide  
 Concen: 0.483 ug/l  
 RT: 2.520 min Scan# 21  
 Delta R.T. -0.000 min  
 Lab File: VX047886.D  
 Acq: 29 Sep 2025 16:02

Instrument : MSVOA\_X  
 ClientSampleId : BP-VPB-184-GW-340-342

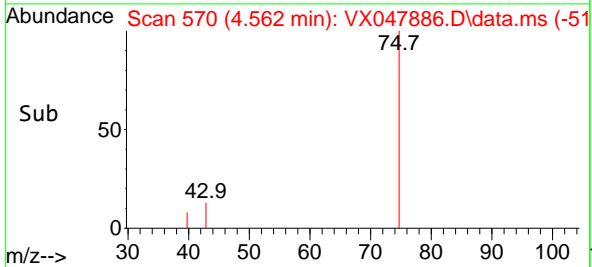
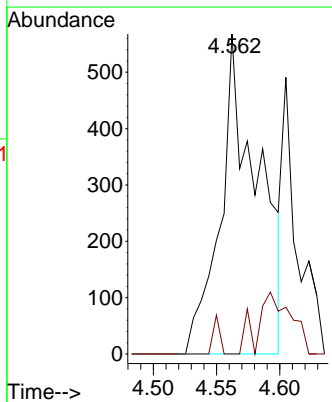
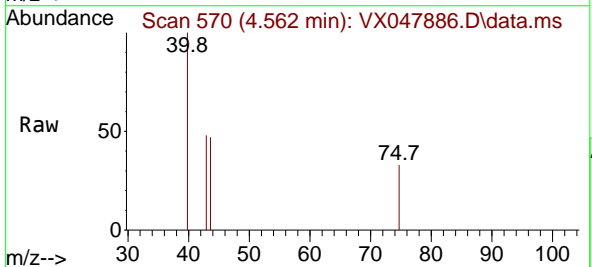


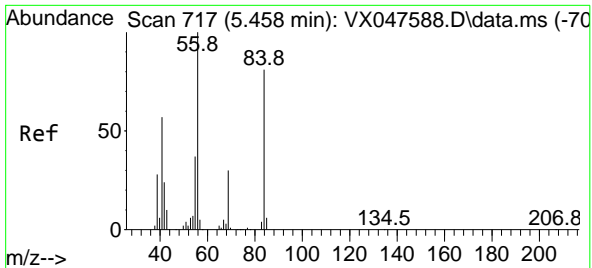
Tgt Ion: 76 Resp: 1904  
 Ion Ratio Lower Upper  
 76 100  
 78 8.7 6.8 10.2



#25  
 2-Butanone  
 Concen: 1.114 ug/l  
 RT: 4.562 min Scan# 570  
 Delta R.T. 0.024 min  
 Lab File: VX047886.D  
 Acq: 29 Sep 2025 16:02

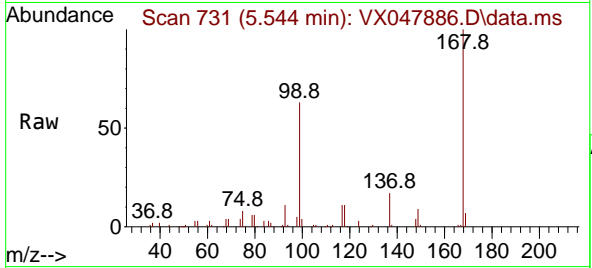
Tgt Ion: 43 Resp: 1166  
 Ion Ratio Lower Upper  
 43 100  
 72 0.0 20.1 30.1#



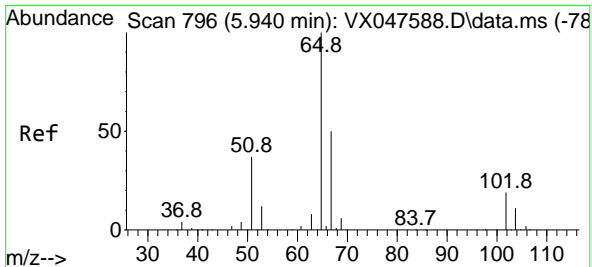
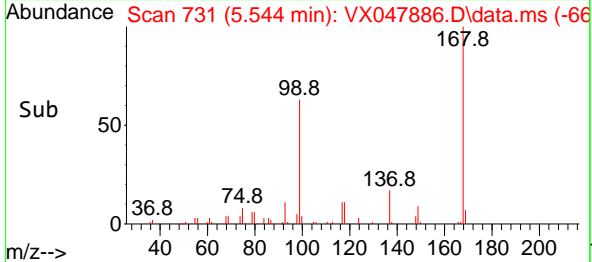
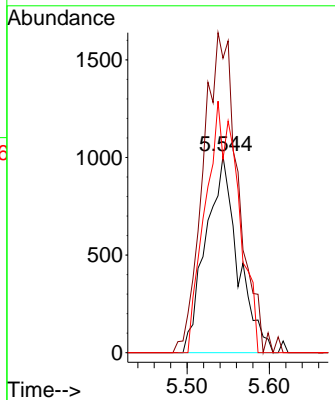


#31  
 Cyclohexane  
 Concen: 1.070 ug/l  
 RT: 5.544 min Scan# 717  
 Delta R.T. 0.085 min  
 Lab File: VX047886.D  
 Acq: 29 Sep 2025 16:02

Instrument : MSVOA\_X  
 ClientSampleId : BP-VPB-184-GW-340-342

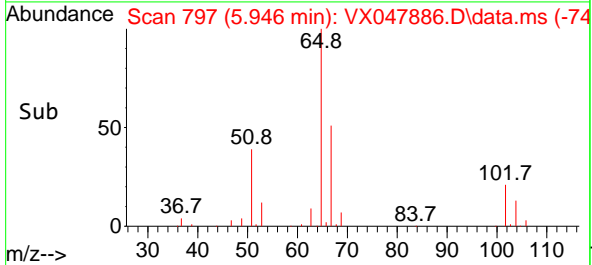
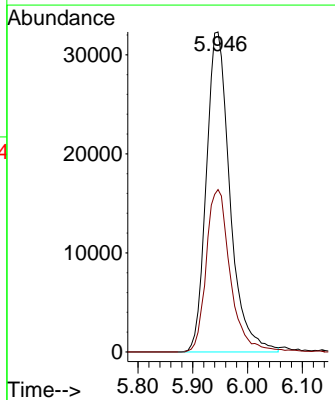
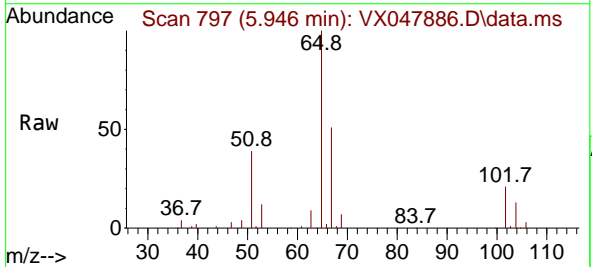


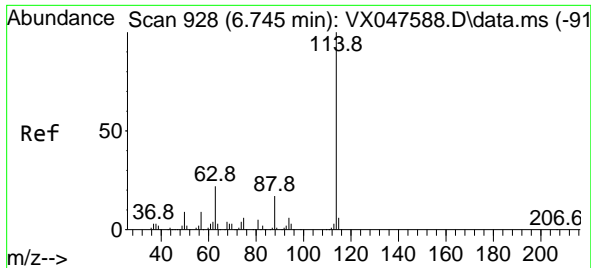
Tgt Ion: 56 Resp: 2729  
 Ion Ratio Lower Upper  
 56 100  
 69 144.1 23.8 35.8#  
 84 98.4 64.6 97.0#



#33  
 1,2-Dichloroethane-d4  
 Concen: 50.059 ug/l  
 RT: 5.946 min Scan# 797  
 Delta R.T. 0.006 min  
 Lab File: VX047886.D  
 Acq: 29 Sep 2025 16:02

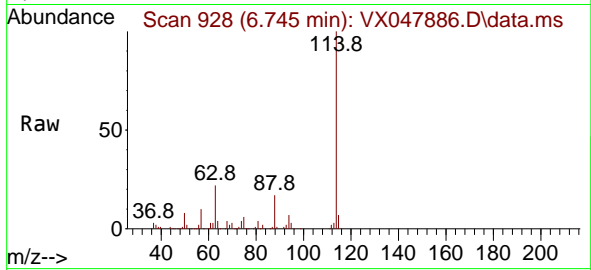
Tgt Ion: 65 Resp: 96623  
 Ion Ratio Lower Upper  
 65 100  
 67 52.0 0.0 103.0



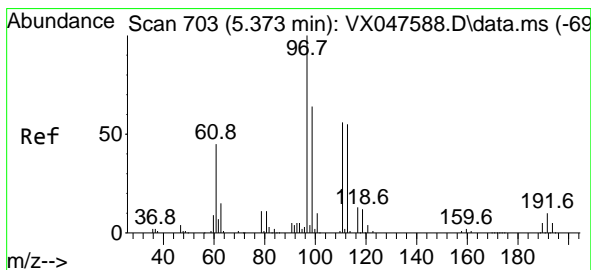
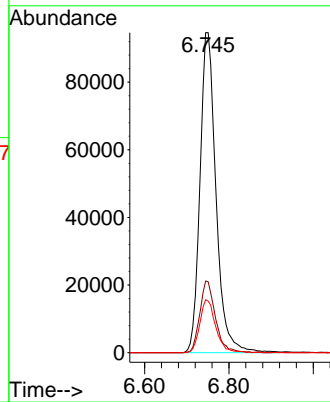
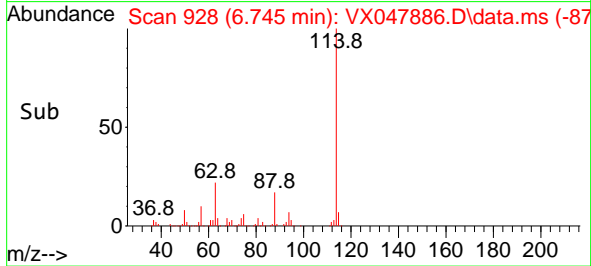


#34  
 1,4-Difluorobenzene  
 Concen: 50.000 ug/l  
 RT: 6.745 min Scan# 91  
 Delta R.T. -0.000 min  
 Lab File: VX047886.D  
 Acq: 29 Sep 2025 16:02

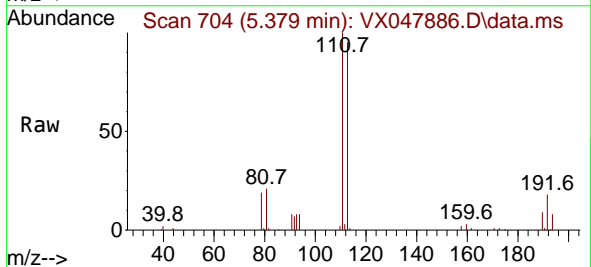
Instrument : MSVOA\_X  
 ClientSampleId : BP-VPB-184-GW-340-342



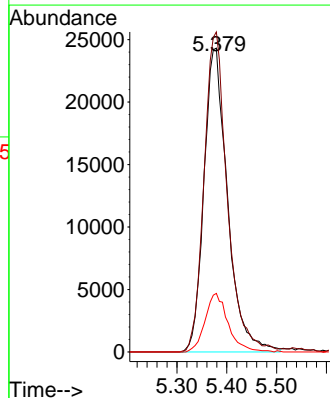
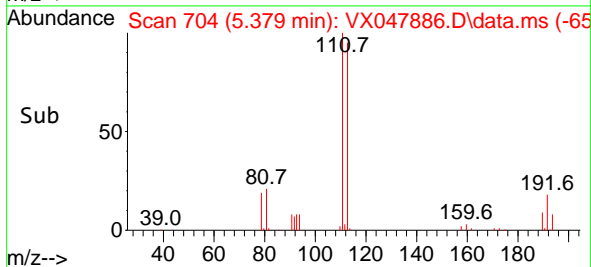
Tgt Ion:114 Resp: 250493  
 Ion Ratio Lower Upper  
 114 100  
 63 22.4 0.0 44.0  
 88 16.5 0.0 34.2

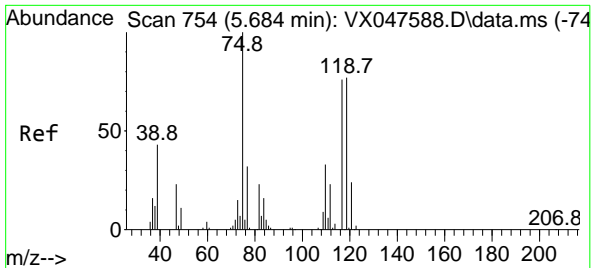


#35  
 Dibromofluoromethane  
 Concen: 47.639 ug/l  
 RT: 5.379 min Scan# 704  
 Delta R.T. 0.006 min  
 Lab File: VX047886.D  
 Acq: 29 Sep 2025 16:02



Tgt Ion:113 Resp: 80030  
 Ion Ratio Lower Upper  
 113 100  
 111 104.0 80.9 121.3  
 192 18.8 14.2 21.4



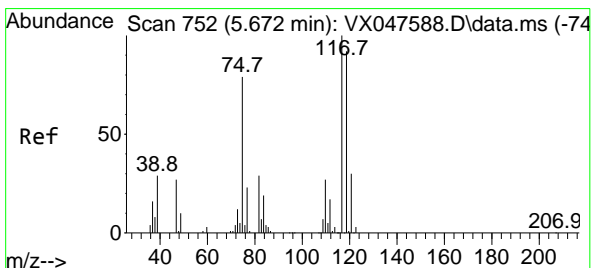
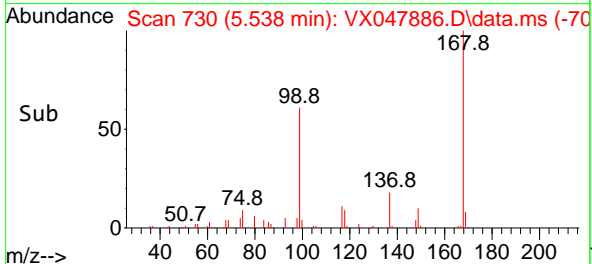
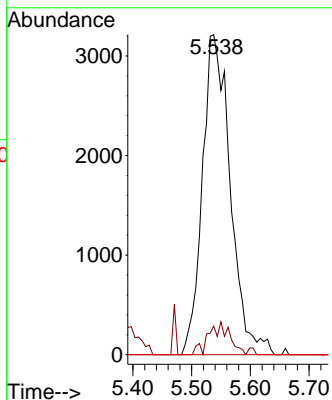
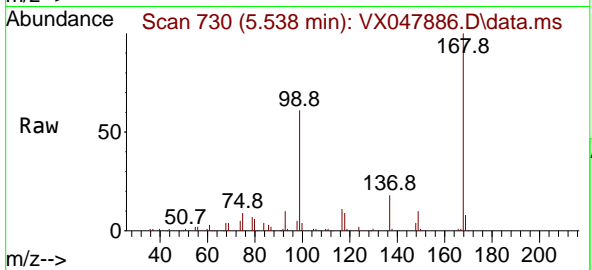


#36  
 1,1-Dichloropropene  
 Concen: 4.327 ug/l  
 RT: 5.538 min Scan# 711  
 Delta R.T. -0.146 min  
 Lab File: VX047886.D  
 Acq: 29 Sep 2025 16:02

Instrument : MSVOA\_X  
 ClientSampleId : BP-VPB-184-GW-340-342

Tgt Ion: 75 Resp: 10622

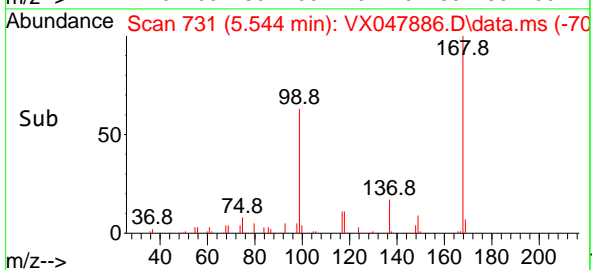
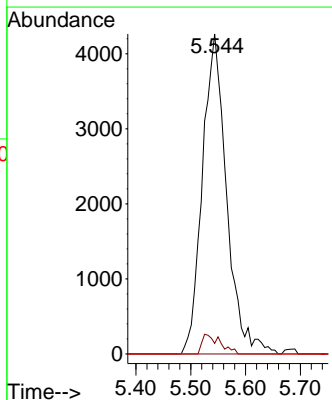
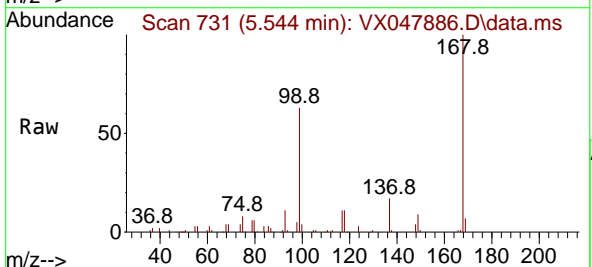
Ion	Ratio	Lower	Upper
75	100		
110	3.8	16.7	50.1#
77	0.0	24.3	36.5#



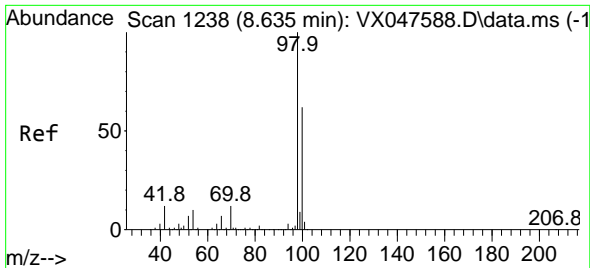
#38  
 Carbon Tetrachloride  
 Concen: 4.900 ug/l  
 RT: 5.544 min Scan# 731  
 Delta R.T. -0.128 min  
 Lab File: VX047886.D  
 Acq: 29 Sep 2025 16:02

Tgt Ion: 117 Resp: 13070

Ion	Ratio	Lower	Upper
117	100		
119	3.3	73.4	110.2#
121	0.0	23.8	35.6#

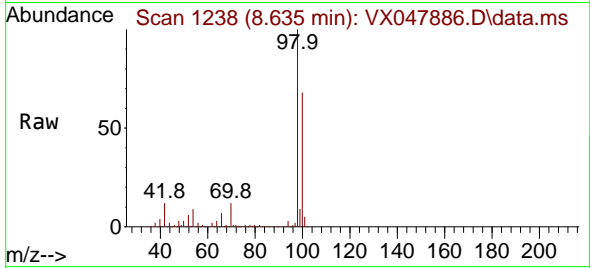




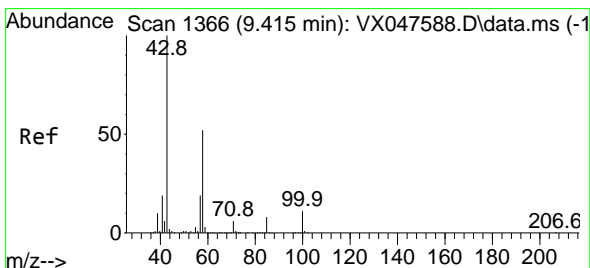
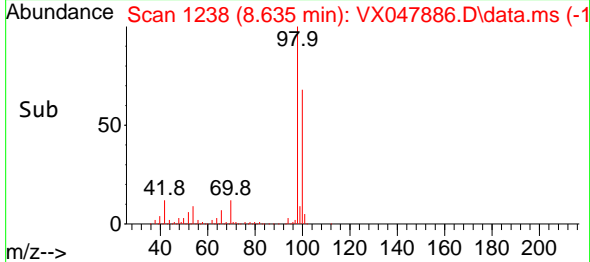
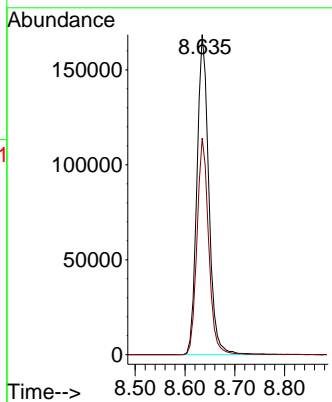


#50  
 Toluene-d8  
 Concen: 47.879 ug/l  
 RT: 8.635 min Scan# 11  
 Delta R.T. -0.000 min  
 Lab File: VX047886.D  
 Acq: 29 Sep 2025 16:02

Instrument : MSVOA\_X  
 ClientSampleId : BP-VPB-184-GW-340-342

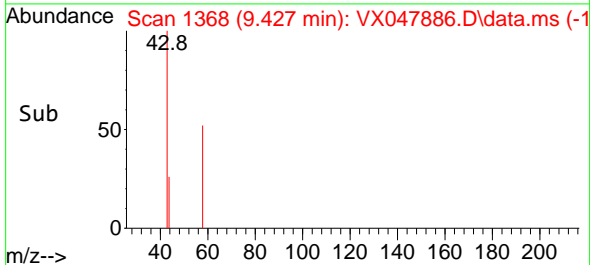
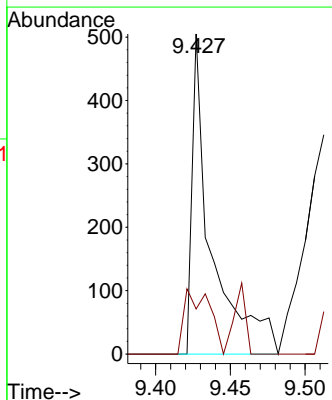
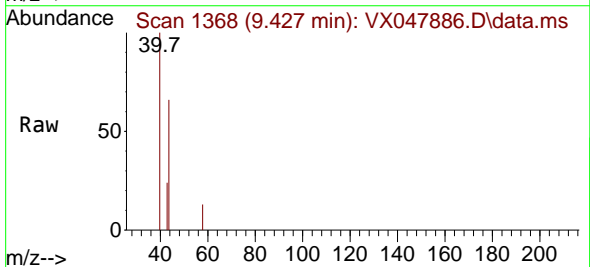


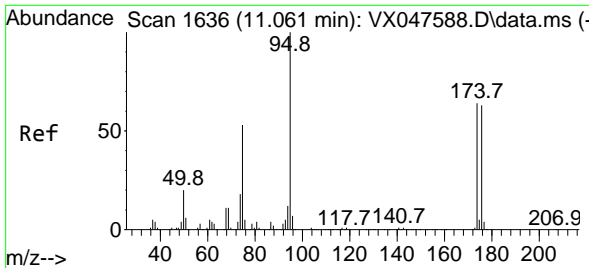
Tgt Ion: 98 Resp: 278316  
 Ion Ratio Lower Upper  
 98 100  
 100 66.6 53.0 79.4



#59  
 2-Hexanone  
 Concen: 0.262 ug/l  
 RT: 9.427 min Scan# 1368  
 Delta R.T. 0.012 min  
 Lab File: VX047886.D  
 Acq: 29 Sep 2025 16:02

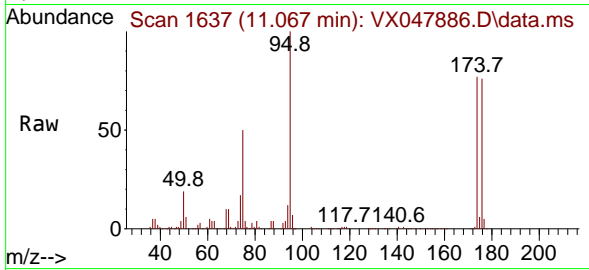
Tgt Ion: 43 Resp: 450  
 Ion Ratio Lower Upper  
 43 100  
 58 26.7 26.1 78.2





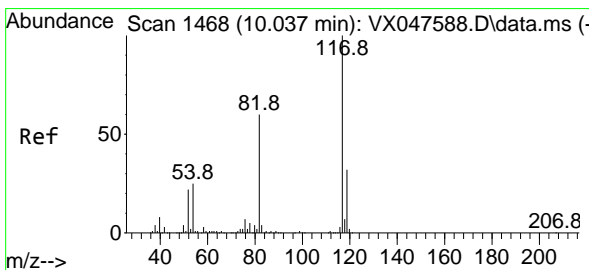
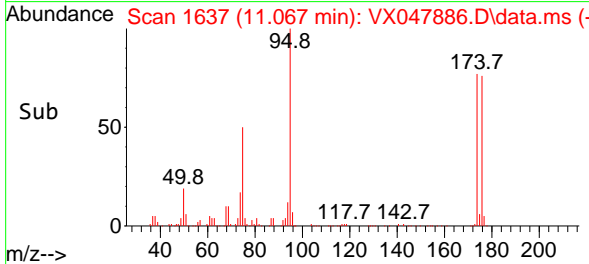
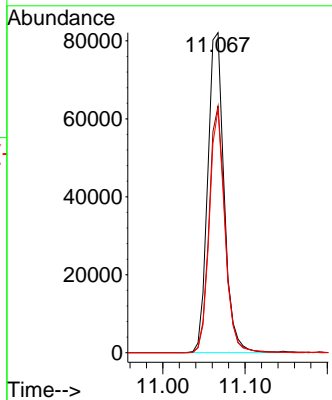
#62  
 4-Bromofluorobenzene  
 Concen: 51.465 ug/l  
 RT: 11.067 min Scan# 11  
 Delta R.T. 0.006 min  
 Lab File: VX047886.D  
 Acq: 29 Sep 2025 16:02

Instrument : MSVOA\_X  
 ClientSampleId : BP-VPB-184-GW-340-342



Tgt Ion: 95 Resp: 113538

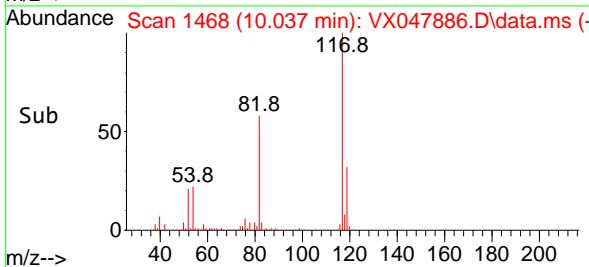
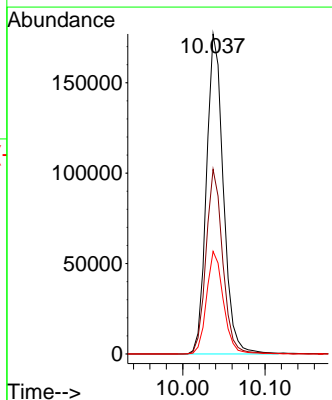
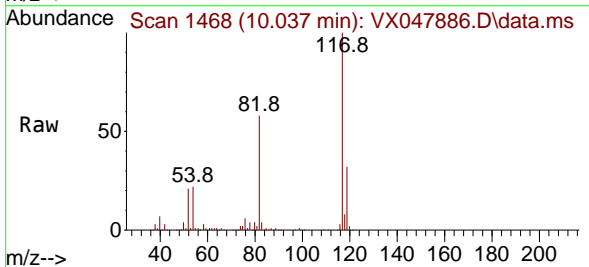
Ion	Ratio	Lower	Upper
95	100		
174	75.3	0.0	141.6
176	72.2	0.0	138.4

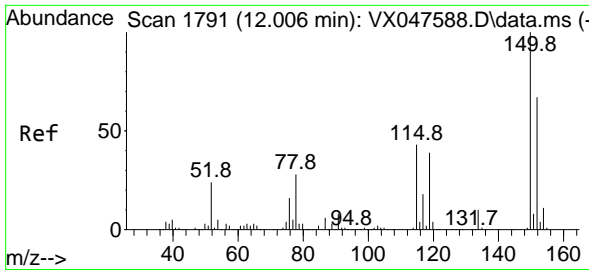


#63  
 Chlorobenzene-d5  
 Concen: 50.000 ug/l  
 RT: 10.037 min Scan# 1468  
 Delta R.T. -0.000 min  
 Lab File: VX047886.D  
 Acq: 29 Sep 2025 16:02

Tgt Ion: 117 Resp: 252342

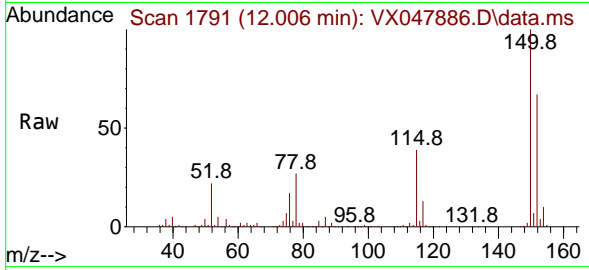
Ion	Ratio	Lower	Upper
117	100		
82	57.7	47.8	71.6
119	32.1	25.2	37.8



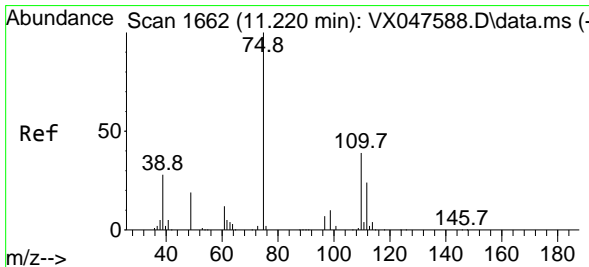
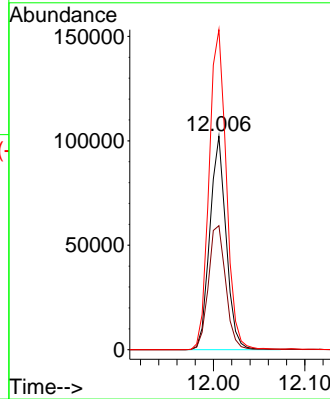
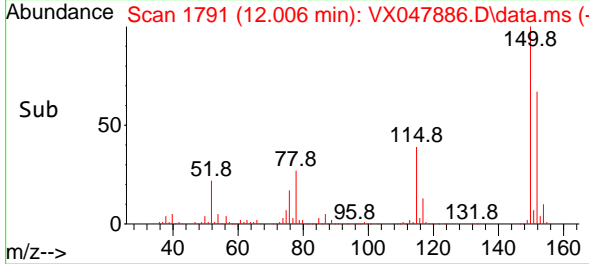


#72  
 1,4-Dichlorobenzene-d4  
 Concen: 50.000 ug/l  
 RT: 12.006 min Scan# 1  
 Delta R.T. -0.000 min  
 Lab File: VX047886.D  
 Acq: 29 Sep 2025 16:02

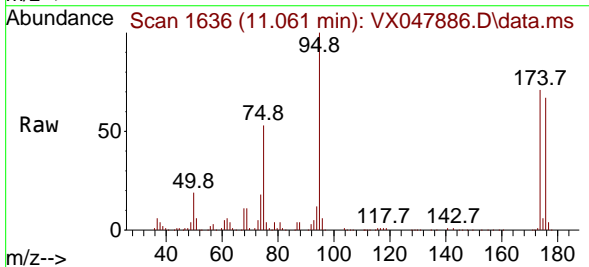
Instrument : MSVOA\_X  
 ClientSampleId : BP-VPB-184-GW-340-342



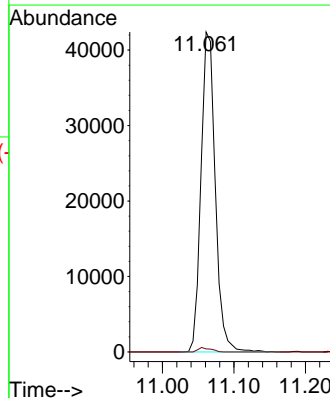
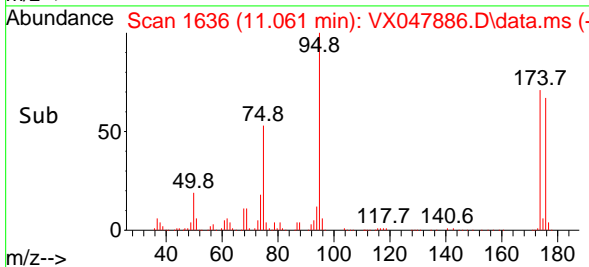
Tgt Ion:152 Resp: 126414  
 Ion Ratio Lower Upper  
 152 100  
 115 62.0 44.9 134.5  
 150 158.1 0.0 352.0

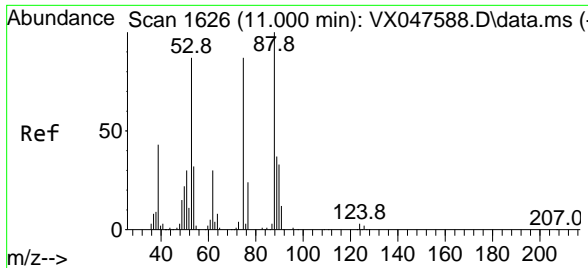


#76  
 1,2,3-Trichloropropane  
 Concen: 22.964 ug/l  
 RT: 11.061 min Scan# 1636  
 Delta R.T. -0.159 min  
 Lab File: VX047886.D  
 Acq: 29 Sep 2025 16:02



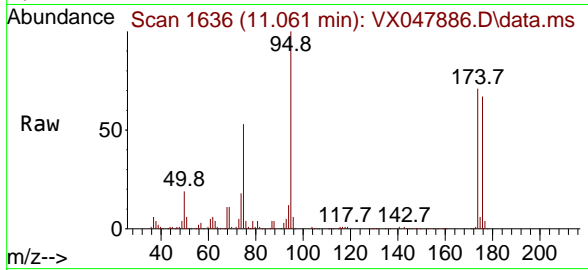
Tgt Ion: 75 Resp: 58777  
 Ion Ratio Lower Upper  
 75 100  
 77 1.2 18.8 56.4#





#81  
 trans-1,4-Dichloro-2-butene  
 Concen: 58.562 ug/l  
 RT: 11.061 min Scan# 10  
 Delta R.T. 0.061 min  
 Lab File: VX047886.D  
 Acq: 29 Sep 2025 16:02

Instrument :  
 MSVOA\_X  
 ClientSampleId :  
 BP-VPB-184-GW-340-342



Tgt Ion: 75 Resp: 58777  
 Ion Ratio Lower Upper  
 75 100  
 53 0.0 83.4 125.2#  
 89 0.0 36.3 54.5#

