

Data Path : Z:\voasrv\HPCHEM1\MSVOA\_X\Data\VX092925\  
 Data File : VX047887.D  
 Acq On : 29 Sep 2025 16:23  
 Operator : JC/MD  
 Sample : Q3213-04  
 Misc : 5.0mL/MSVOA\_X/WATER  
 ALS Vial : 21 Sample Multiplier: 1

Instrument :  
 MSVOA\_X  
 ClientSampleId :  
 BP-VPB-184-GW-360-362

Quant Time: Sep 30 01:23:24 2025  
 Quant Method : Z:\voasrv\HPCHEM1\MSVOA\_X\Method\82X091625W.M  
 Quant Title : SW846 8260  
 QLast Update : Wed Sep 17 06:39:58 2025  
 Response via : Initial Calibration

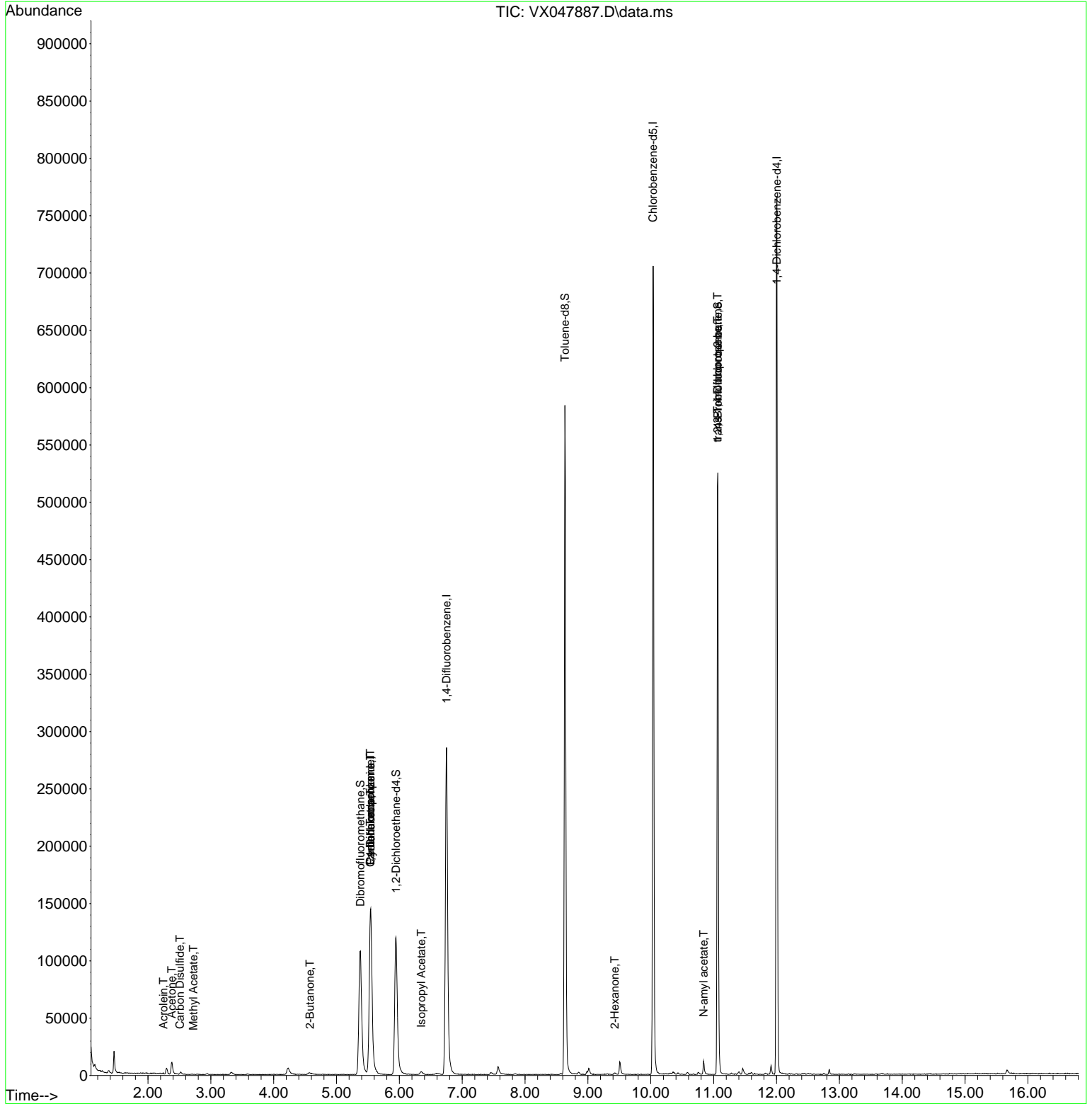
Compound	R.T.	QIon	Response	Conc	Units	Dev(Min)
-----						
Internal Standards						
1) Pentafluorobenzene	5.544	168	147966	50.000	ug/l	0.00
34) 1,4-Difluorobenzene	6.751	114	308643	50.000	ug/l	0.00
63) Chlorobenzene-d5	10.037	117	320742	50.000	ug/l	0.00
72) 1,4-Dichlorobenzene-d4	12.006	152	164731	50.000	ug/l	0.00
System Monitoring Compounds						
33) 1,2-Dichloroethane-d4	5.946	65	130174	55.270	ug/l	0.00
Spiked Amount	50.000	Range 78 - 117	Recovery	=	110.540%	
35) Dibromofluoromethane	5.379	113	105173	50.810	ug/l	0.00
Spiked Amount	50.000	Range 75 - 124	Recovery	=	101.620%	
50) Toluene-d8	8.635	98	353678	49.380	ug/l	0.00
Spiked Amount	50.000	Range 92 - 112	Recovery	=	98.760%	
62) 4-Bromofluorobenzene	11.067	95	156453	57.557	ug/l	0.00
Spiked Amount	50.000	Range 83 - 123	Recovery	=	115.120%	
Target Compounds						
						Qvalue
13) Acrolein	2.246	56	151	0.625	ug/l	91
16) Acetone	2.380	43	14228	13.894	ug/l	96
17) Carbon Disulfide	2.508	76	1250	0.260	ug/l #	76
18) Methyl Acetate	2.721	43	674	0.296	ug/l #	54
25) 2-Butanone	4.574	43	3897	3.051	ug/l #	81
31) Cyclohexane	5.544	56	3112	1.000	ug/l #	4
36) 1,1-Dichloropropene	5.538	75	12420	4.106	ug/l #	52
38) Carbon Tetrachloride	5.538	117	15913	4.842	ug/l #	19
43) Isopropyl Acetate	6.348	43	1088	0.205	ug/l #	62
59) 2-Hexanone	9.427	43	1360	0.643	ug/l	88
74) N-amyl acetate	10.842	43	1594	0.279	ug/l #	1
76) 1,2,3-Trichloropropane	11.061	75	79905	23.957	ug/l #	40
81) trans-1,4-Dichloro-2-b...	11.061	75	79905	61.095	ug/l #	8

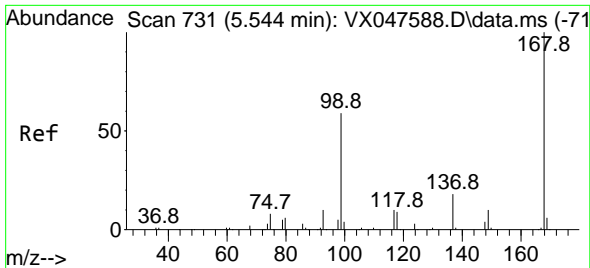
(#) = qualifier out of range (m) = manual integration (+) = signals summed

Data Path : Z:\voasrv\HPCHEM1\MSVOA\_X\Data\VX092925\  
 Data File : VX047887.D  
 Acq On : 29 Sep 2025 16:23  
 Operator : JC/MD  
 Sample : Q3213-04  
 Misc : 5.0mL/MSVOA\_X/WATER  
 ALS Vial : 21 Sample Multiplier: 1

**Instrument :**  
 MSVOA\_X  
**ClientSampleId :**  
 BP-VPB-184-GW-360-362

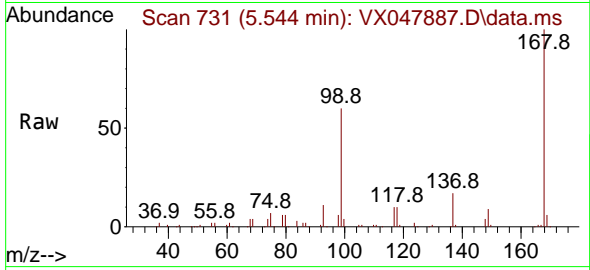
Quant Time: Sep 30 01:23:24 2025  
 Quant Method : Z:\voasrv\HPCHEM1\MSVOA\_X\Method\82X091625W.M  
 Quant Title : SW846 8260  
 QLast Update : Wed Sep 17 06:39:58 2025  
 Response via : Initial Calibration



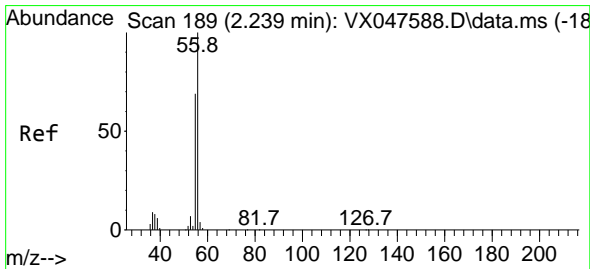
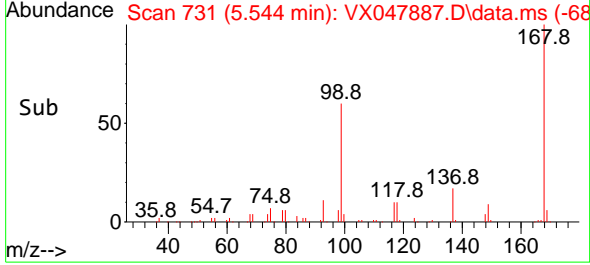
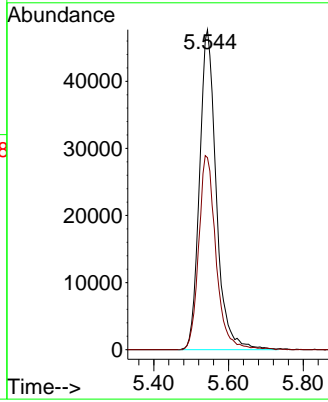


#1  
 Pentafluorobenzene  
 Concen: 50.000 ug/l  
 RT: 5.544 min Scan# 71  
 Delta R.T. -0.000 min  
 Lab File: VX047887.D  
 Acq: 29 Sep 2025 16:23

Instrument : MSVOA\_X  
 ClientSampleId : BP-VPB-184-GW-360-362

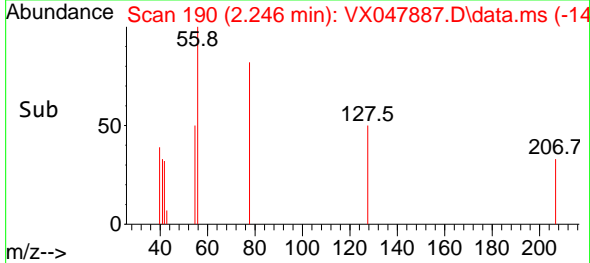
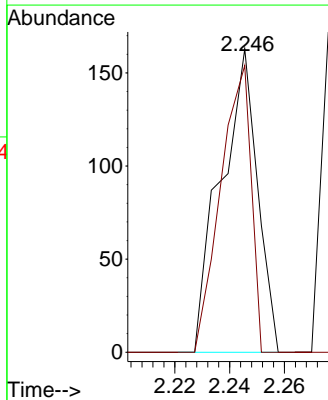
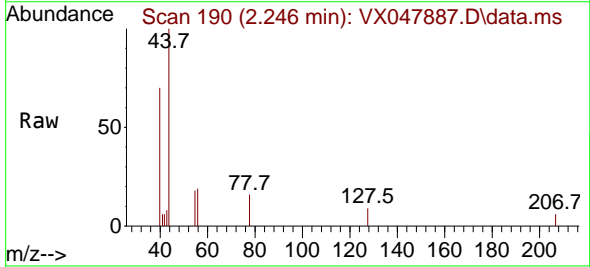


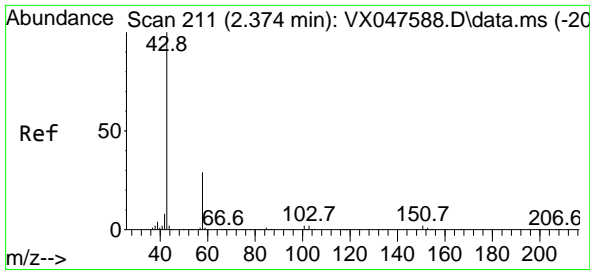
Tgt Ion:168 Resp: 147966  
 Ion Ratio Lower Upper  
 168 100  
 99 60.0 48.8 73.2



#13  
 Acrolein  
 Concen: 0.625 ug/l  
 RT: 2.246 min Scan# 190  
 Delta R.T. 0.006 min  
 Lab File: VX047887.D  
 Acq: 29 Sep 2025 16:23

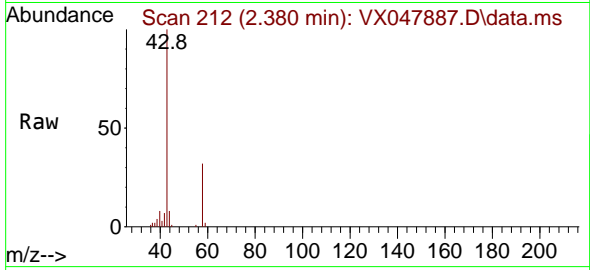
Tgt Ion: 56 Resp: 151  
 Ion Ratio Lower Upper  
 56 100  
 55 78.8 57.2 85.8



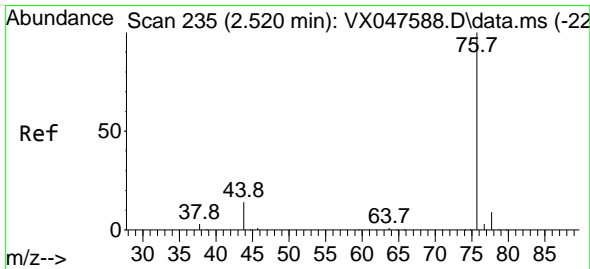
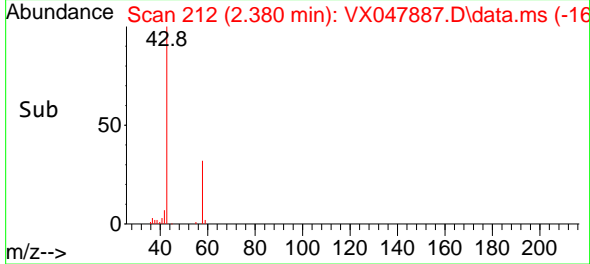
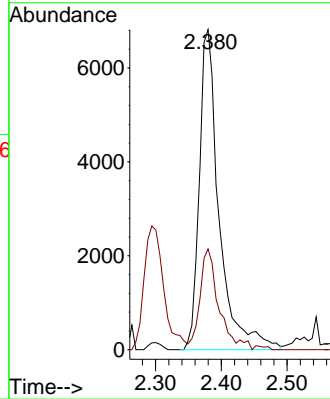


#16  
 Acetone  
 Concen: 13.894 ug/l  
 RT: 2.380 min Scan# 211  
 Delta R.T. 0.006 min  
 Lab File: VX047887.D  
 Acq: 29 Sep 2025 16:23

Instrument :  
 MSVOA\_X  
 ClientSampleId :  
 BP-VPB-184-GW-360-362

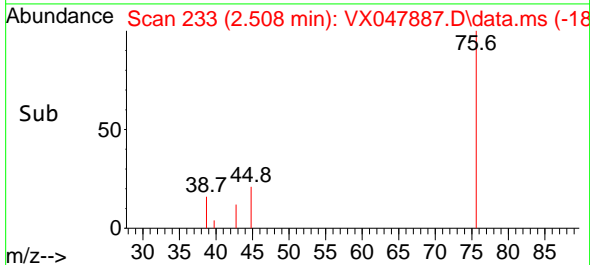
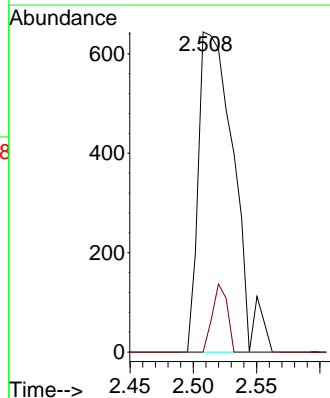
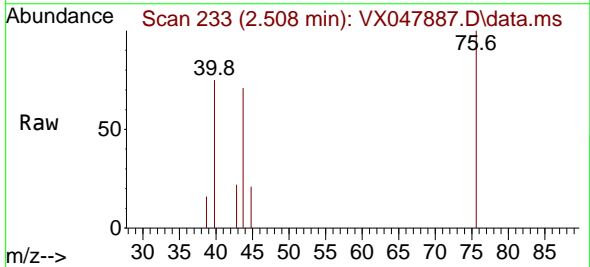


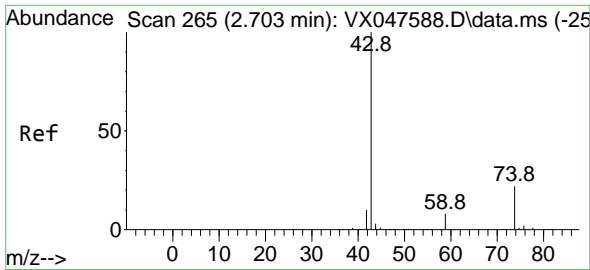
Tgt Ion: 43 Resp: 14228  
 Ion Ratio Lower Upper  
 43 100  
 58 31.5 23.4 35.0



#17  
 Carbon Disulfide  
 Concen: 0.260 ug/l  
 RT: 2.508 min Scan# 233  
 Delta R.T. -0.012 min  
 Lab File: VX047887.D  
 Acq: 29 Sep 2025 16:23

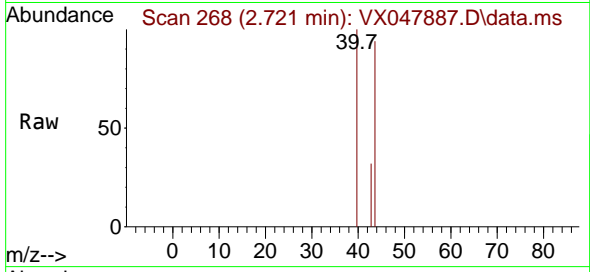
Tgt Ion: 76 Resp: 1250  
 Ion Ratio Lower Upper  
 76 100  
 78 0.0 6.8 10.2#



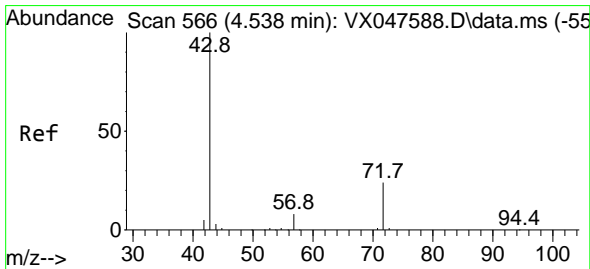
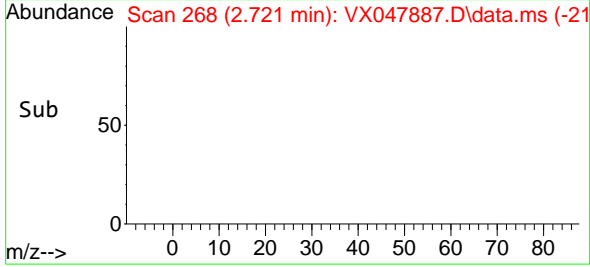
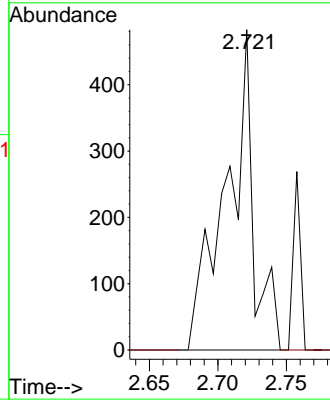


#18  
 Methyl Acetate  
 Concen: 0.296 ug/l  
 RT: 2.721 min Scan# 20  
 Delta R.T. 0.018 min  
 Lab File: VX047887.D  
 Acq: 29 Sep 2025 16:23

Instrument : MSVOA\_X  
 ClientSampleId : BP-VPB-184-GW-360-362

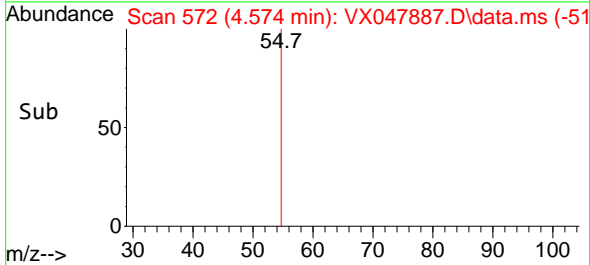
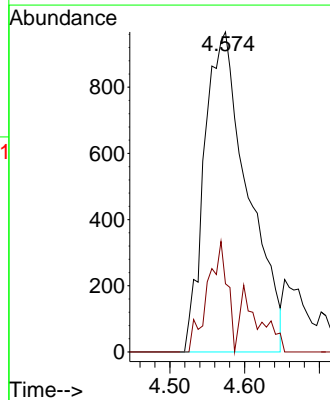
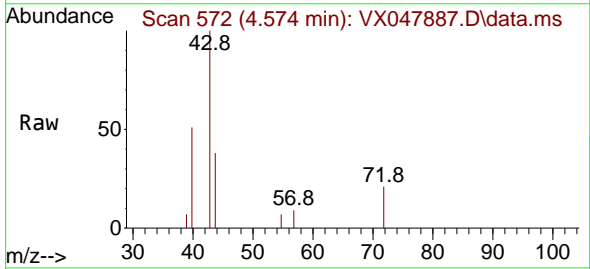


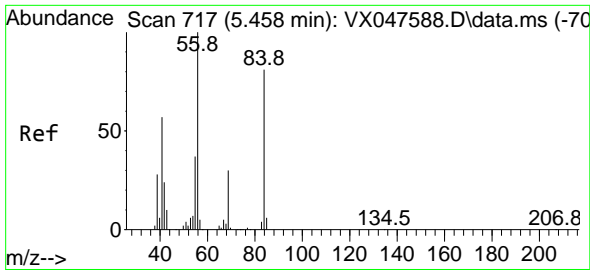
Tgt Ion: 43 Resp: 674  
 Ion Ratio Lower Upper  
 43 100  
 74 0.0 17.4 26.2#



#25  
 2-Butanone  
 Concen: 3.051 ug/l  
 RT: 4.574 min Scan# 572  
 Delta R.T. 0.036 min  
 Lab File: VX047887.D  
 Acq: 29 Sep 2025 16:23

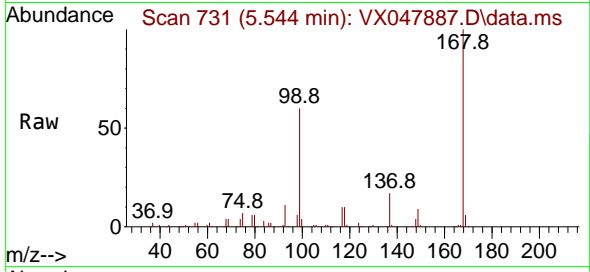
Tgt Ion: 43 Resp: 3897  
 Ion Ratio Lower Upper  
 43 100  
 72 15.4 20.1 30.1#



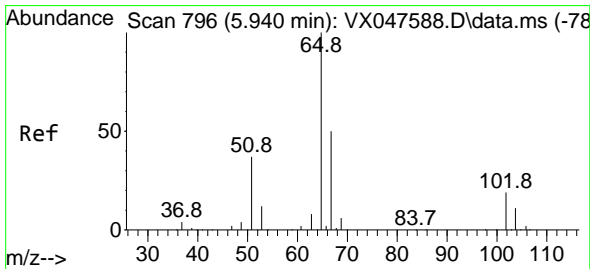
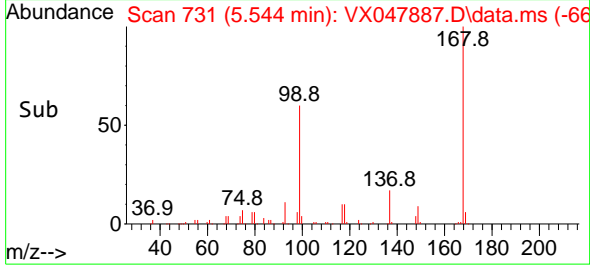
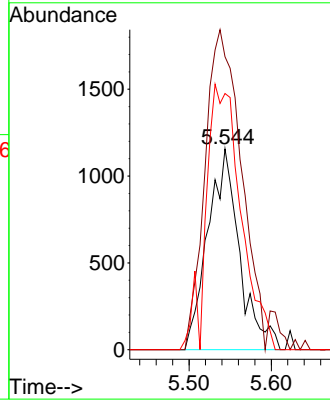


#31  
 Cyclohexane  
 Concen: 1.000 ug/l  
 RT: 5.544 min Scan# 717  
 Delta R.T. 0.085 min  
 Lab File: VX047887.D  
 Acq: 29 Sep 2025 16:23

Instrument : MSVOA\_X  
 ClientSampleId : BP-VPB-184-GW-360-362

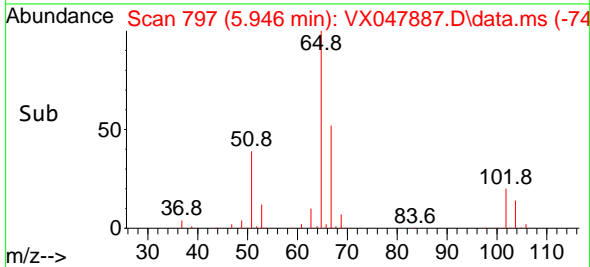
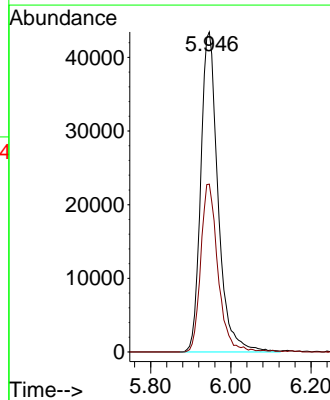
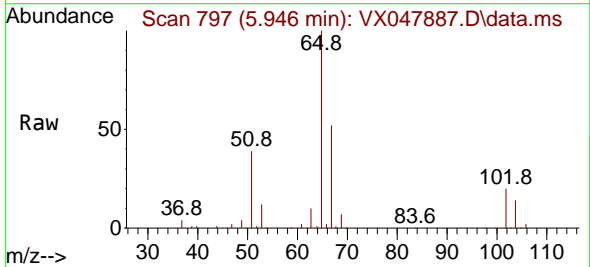


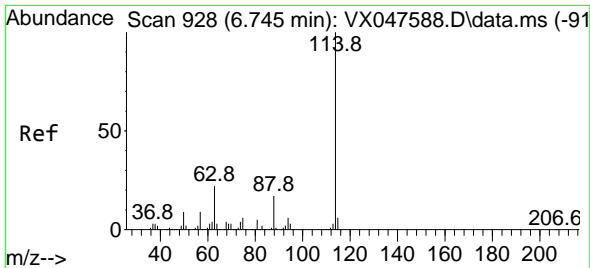
Tgt Ion: 56 Resp: 3112  
 Ion Ratio Lower Upper  
 56 100  
 69 145.8 23.8 35.8#  
 84 127.5 64.6 97.0#



#33  
 1,2-Dichloroethane-d4  
 Concen: 55.270 ug/l  
 RT: 5.946 min Scan# 797  
 Delta R.T. 0.006 min  
 Lab File: VX047887.D  
 Acq: 29 Sep 2025 16:23

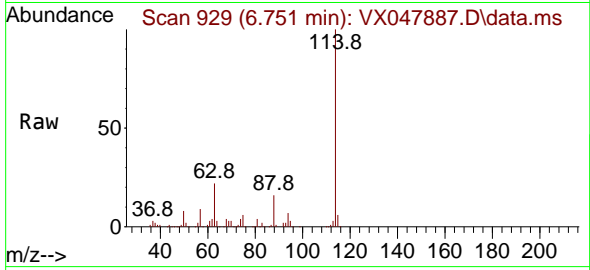
Tgt Ion: 65 Resp: 130174  
 Ion Ratio Lower Upper  
 65 100  
 67 52.1 0.0 103.0



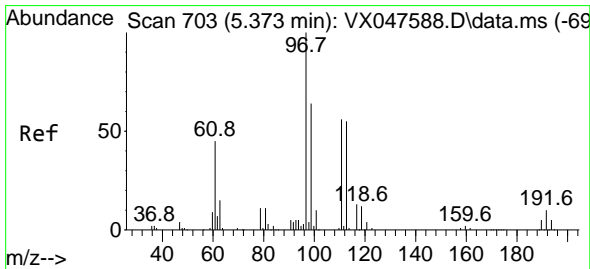
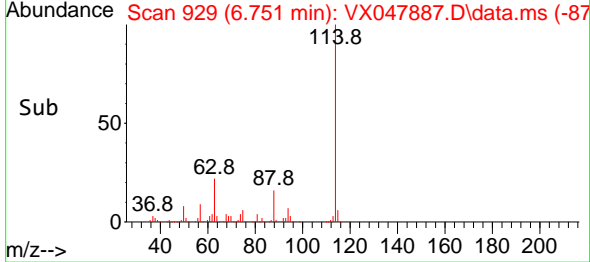
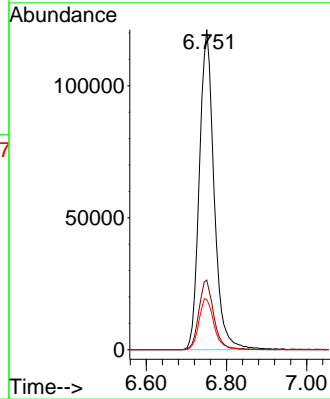


#34  
 1,4-Difluorobenzene  
 Concen: 50.000 ug/l  
 RT: 6.751 min Scan# 911  
 Delta R.T. 0.006 min  
 Lab File: VX047887.D  
 Acq: 29 Sep 2025 16:23

Instrument : MSVOA\_X  
 ClientSampleId : BP-VPB-184-GW-360-362

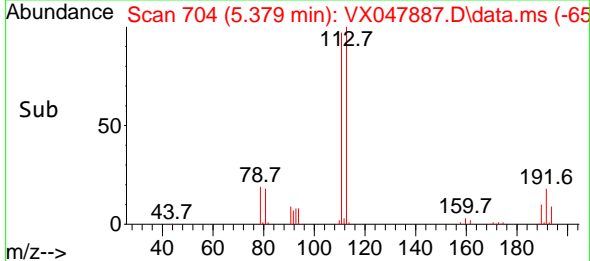
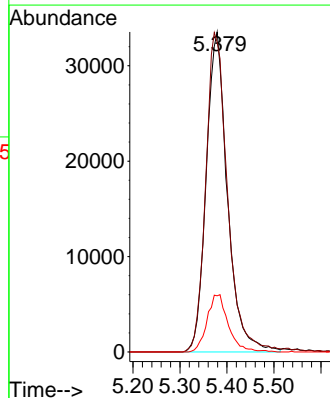
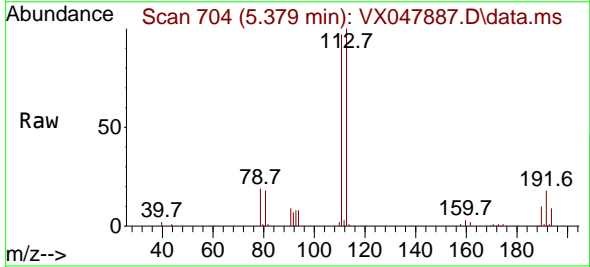


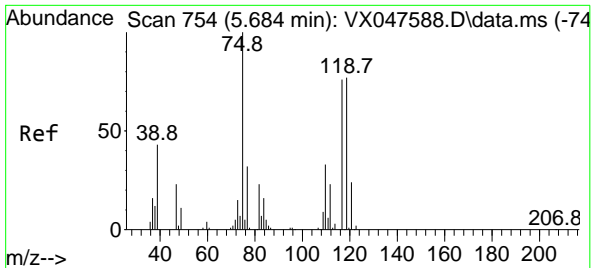
Tgt Ion:114 Resp: 308643  
 Ion Ratio Lower Upper  
 114 100  
 63 21.7 0.0 44.0  
 88 15.7 0.0 34.2



#35  
 Dibromofluoromethane  
 Concen: 50.810 ug/l  
 RT: 5.379 min Scan# 704  
 Delta R.T. 0.006 min  
 Lab File: VX047887.D  
 Acq: 29 Sep 2025 16:23

Tgt Ion:113 Resp: 105173  
 Ion Ratio Lower Upper  
 113 100  
 111 102.5 80.9 121.3  
 192 18.0 14.2 21.4



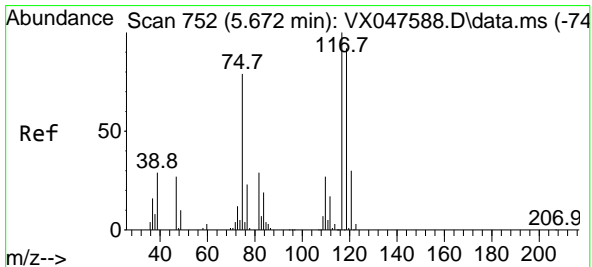
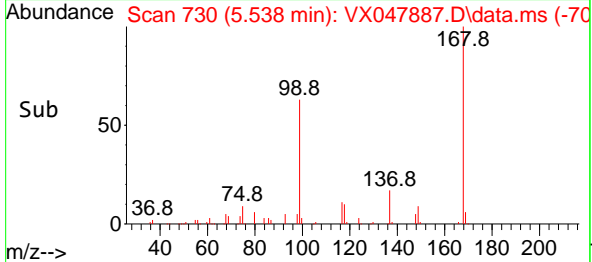
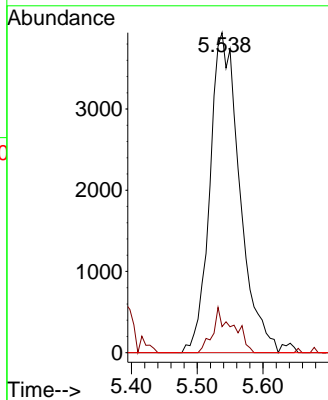
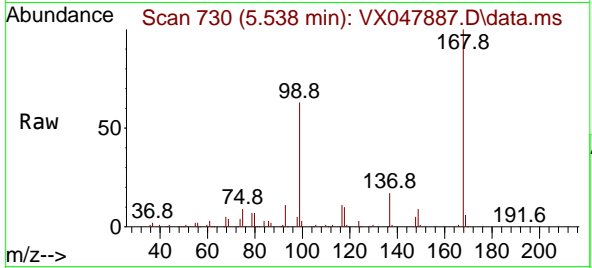


#36  
 1,1-Dichloropropene  
 Concen: 4.106 ug/l  
 RT: 5.538 min Scan# 710  
 Delta R.T. -0.146 min  
 Lab File: VX047887.D  
 Acq: 29 Sep 2025 16:23

Instrument : MSVOA\_X  
 ClientSampleId : BP-VPB-184-GW-360-362

Tgt Ion: 75 Resp: 12420

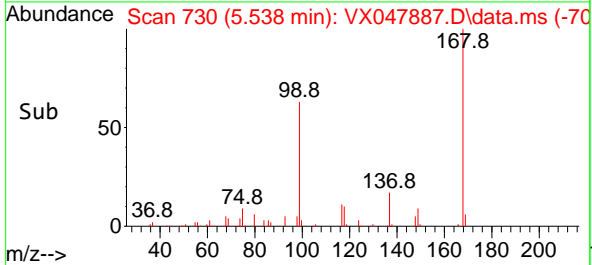
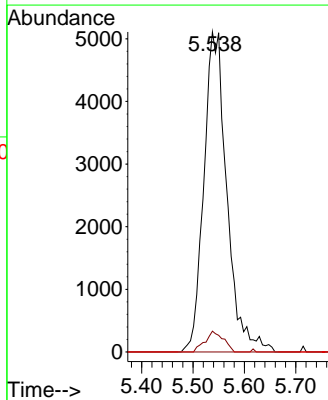
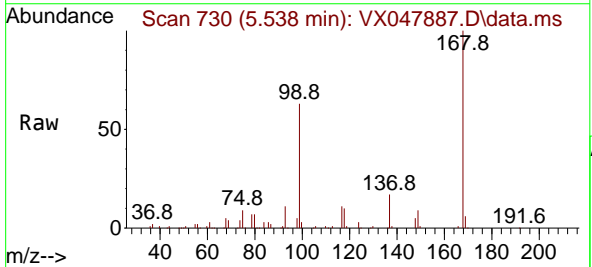
Ion	Ratio	Lower	Upper
75	100		
110	9.7	16.7	50.1#
77	0.0	24.3	36.5#



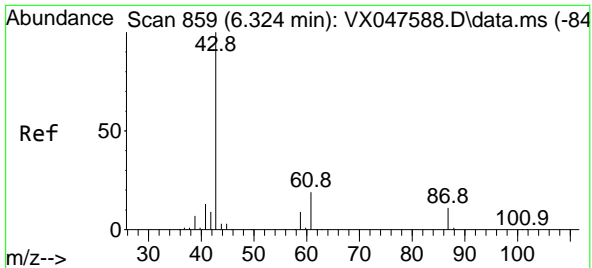
#38  
 Carbon Tetrachloride  
 Concen: 4.842 ug/l  
 RT: 5.538 min Scan# 730  
 Delta R.T. -0.134 min  
 Lab File: VX047887.D  
 Acq: 29 Sep 2025 16:23

Tgt Ion: 117 Resp: 15913

Ion	Ratio	Lower	Upper
117	100		
119	6.5	73.4	110.2#
121	0.0	23.8	35.6#



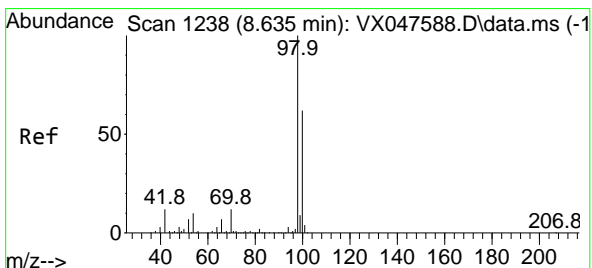
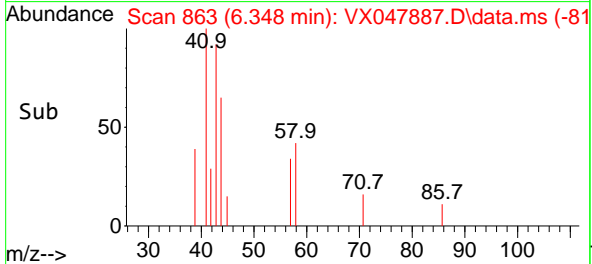
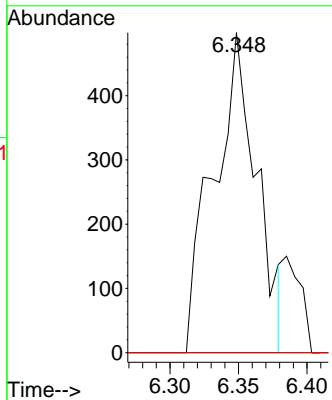
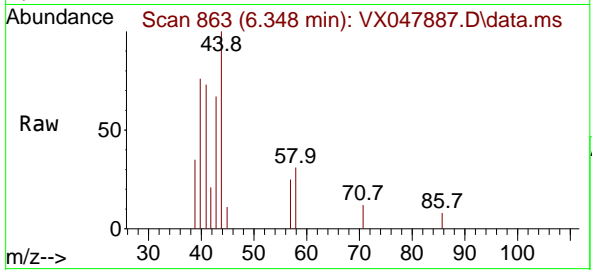




#43  
 Isopropyl Acetate  
 Concen: 0.205 ug/l  
 RT: 6.348 min Scan# 80  
 Delta R.T. 0.024 min  
 Lab File: VX047887.D  
 Acq: 29 Sep 2025 16:23

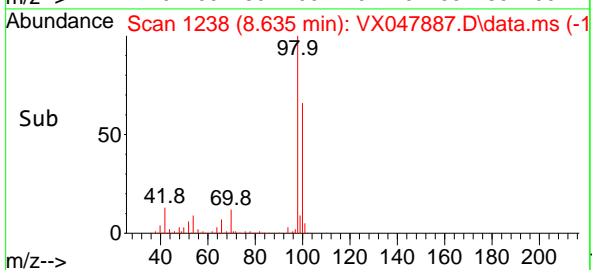
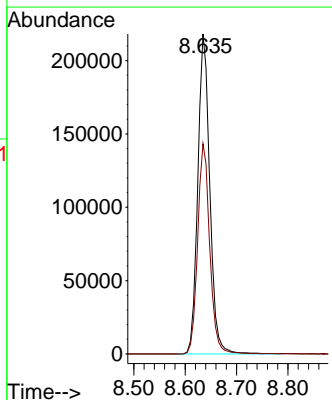
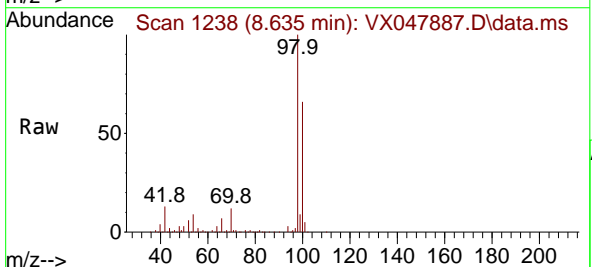
Instrument : MSVOA\_X  
 ClientSampleId : BP-VPB-184-GW-360-362

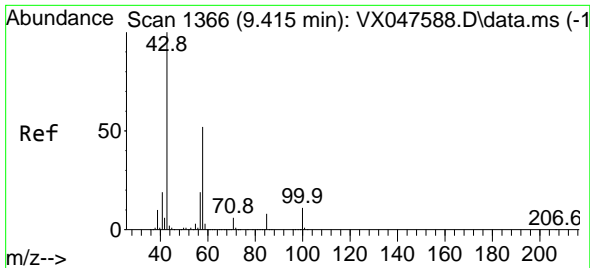
Tgt Ion	Resp	Lower	Upper
43	1088		
61	0.0	15.2	22.8#
87	0.0	9.6	14.4#



#50  
 Toluene-d8  
 Concen: 49.380 ug/l  
 RT: 8.635 min Scan# 1238  
 Delta R.T. -0.000 min  
 Lab File: VX047887.D  
 Acq: 29 Sep 2025 16:23

Tgt Ion	Resp	Lower	Upper
98	353678		
100	66.2	53.0	79.4

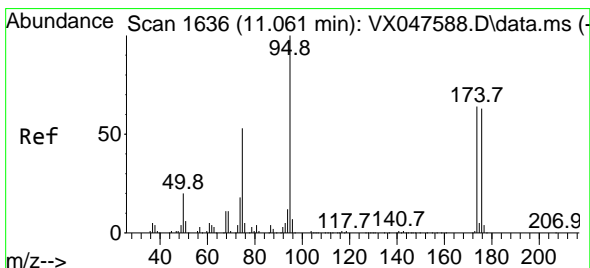
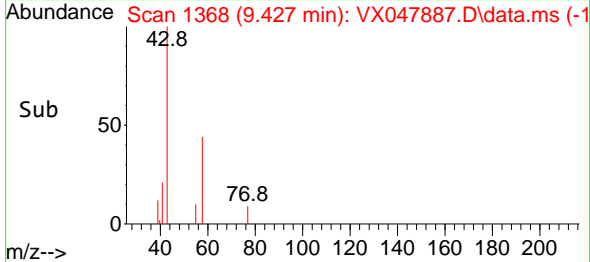
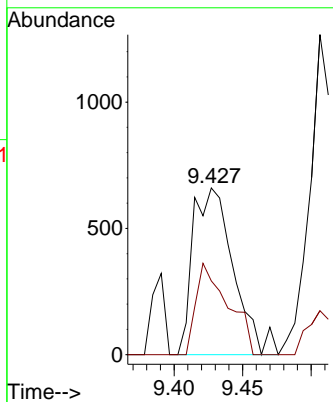
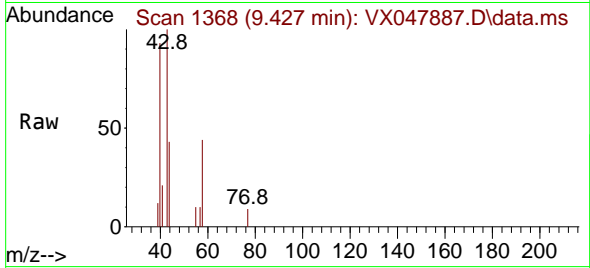




#59  
 2-Hexanone  
 Concen: 0.643 ug/l  
 RT: 9.427 min Scan# 11  
 Delta R.T. 0.012 min  
 Lab File: VX047887.D  
 Acq: 29 Sep 2025 16:23

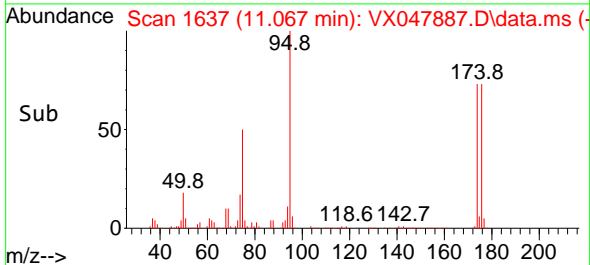
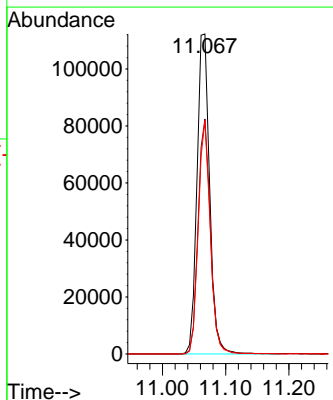
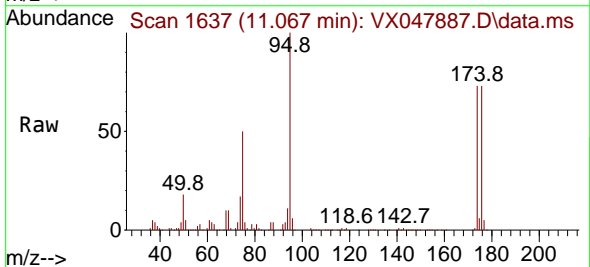
Instrument : MSVOA\_X  
 ClientSampleId : BP-VPB-184-GW-360-362

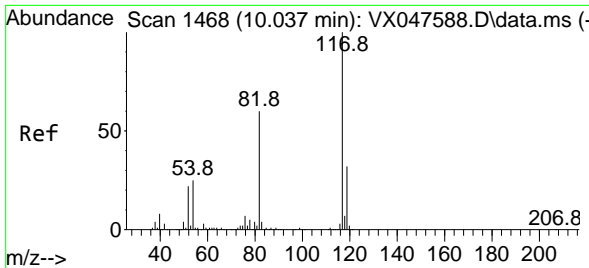
Tgt Ion: 43 Resp: 1360  
 Ion Ratio Lower Upper  
 43 100  
 58 43.5 26.1 78.2



#62  
 4-Bromofluorobenzene  
 Concen: 57.557 ug/l  
 RT: 11.067 min Scan# 1637  
 Delta R.T. 0.006 min  
 Lab File: VX047887.D  
 Acq: 29 Sep 2025 16:23

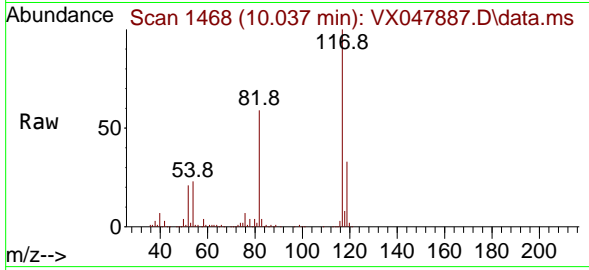
Tgt Ion: 95 Resp: 156453  
 Ion Ratio Lower Upper  
 95 100  
 174 71.3 0.0 141.6  
 176 69.1 0.0 138.4





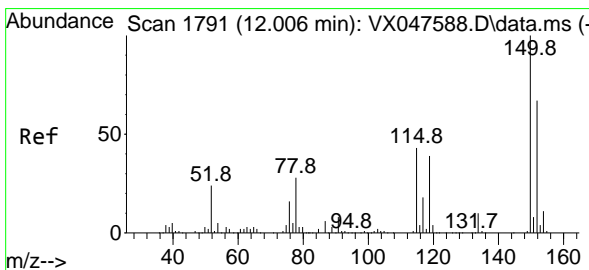
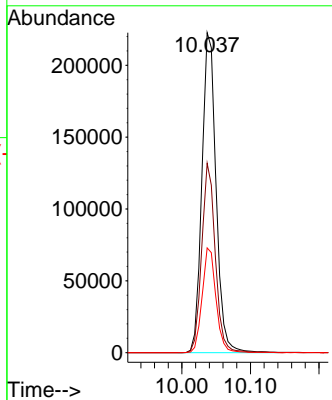
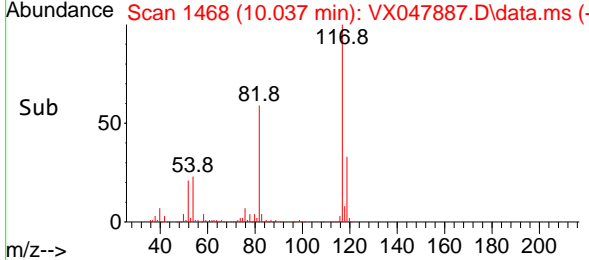
#63  
 Chlorobenzene-d5  
 Concen: 50.000 ug/l  
 RT: 10.037 min Scan# 14  
 Delta R.T. -0.000 min  
 Lab File: VX047887.D  
 Acq: 29 Sep 2025 16:23

Instrument : MSVOA\_X  
 ClientSampleId : BP-VPB-184-GW-360-362

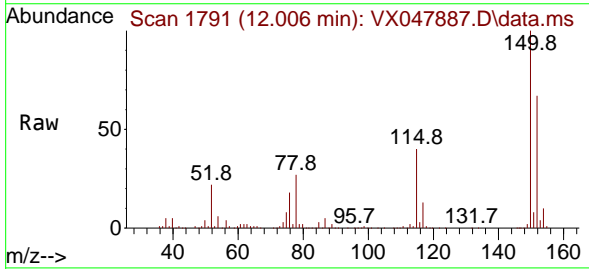


Tgt Ion:117 Resp: 320742

Ion	Ratio	Lower	Upper
117	100		
82	59.2	47.8	71.6
119	32.8	25.2	37.8

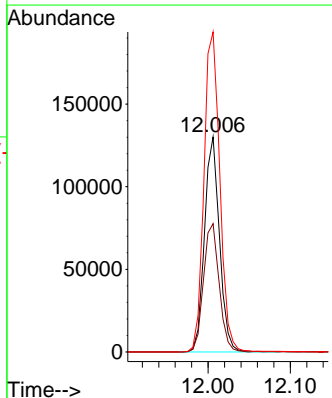
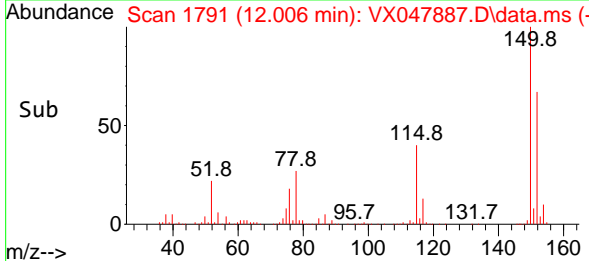


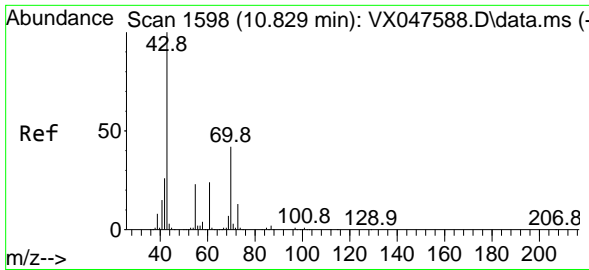
#72  
 1,4-Dichlorobenzene-d4  
 Concen: 50.000 ug/l  
 RT: 12.006 min Scan# 1791  
 Delta R.T. -0.000 min  
 Lab File: VX047887.D  
 Acq: 29 Sep 2025 16:23



Tgt Ion:152 Resp: 164731

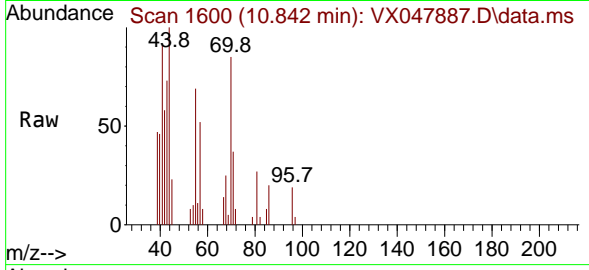
Ion	Ratio	Lower	Upper
152	100		
115	62.3	44.9	134.5
150	157.7	0.0	352.0





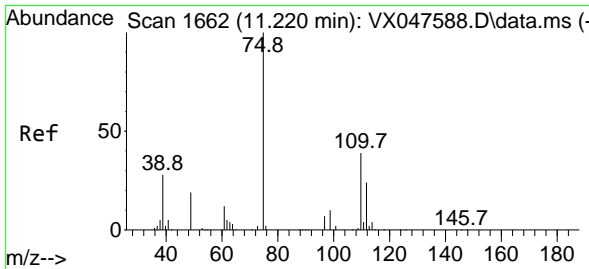
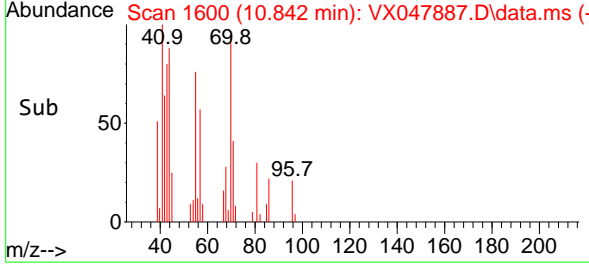
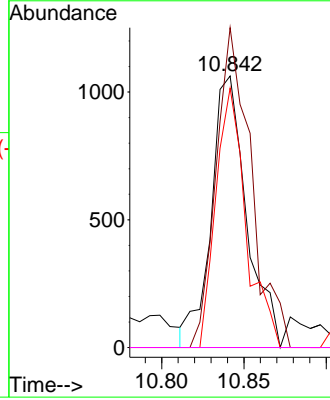
#74  
 N-amy1 acetate  
 Concen: 0.279 ug/l  
 RT: 10.842 min Scan# 11  
 Delta R.T. 0.012 min  
 Lab File: VX047887.D  
 Acq: 29 Sep 2025 16:23

Instrument : MSVOA\_X  
 ClientSampleId : BP-VPB-184-GW-360-362



Tgt Ion: 43 Resp: 1594

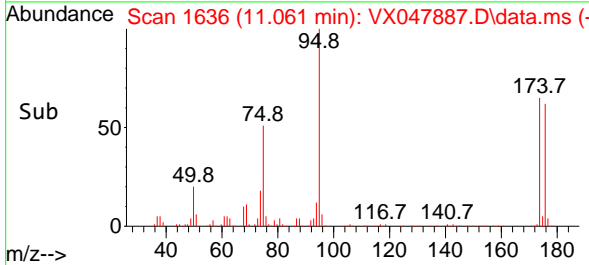
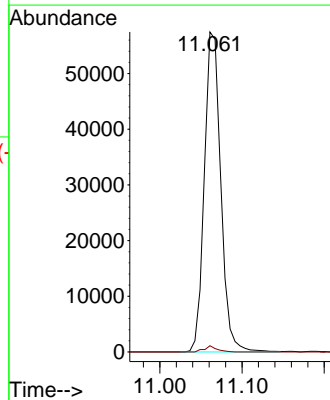
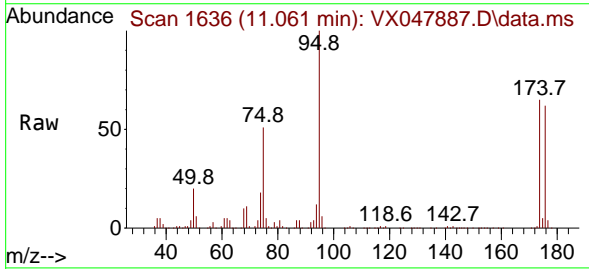
Ion	Ratio	Lower	Upper
43	100		
70	116.3	32.0	48.0#
55	81.2	18.9	28.3#
61	0.0	18.8	28.2#

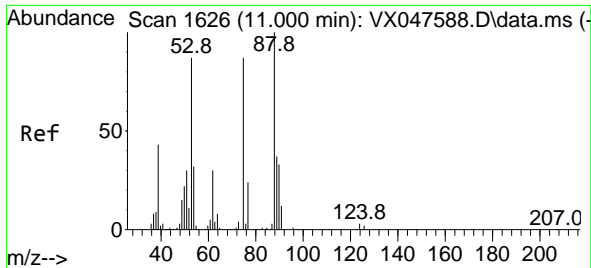


#76  
 1,2,3-Trichloropropane  
 Concen: 23.957 ug/l  
 RT: 11.061 min Scan# 1636  
 Delta R.T. -0.159 min  
 Lab File: VX047887.D  
 Acq: 29 Sep 2025 16:23

Tgt Ion: 75 Resp: 79905

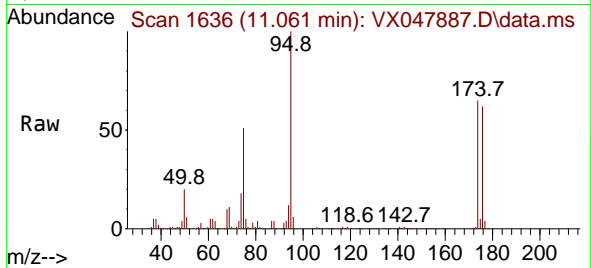
Ion	Ratio	Lower	Upper
75	100		
77	1.4	18.8	56.4#





#81  
 trans-1,4-Dichloro-2-butene  
 Concen: 61.095 ug/l  
 RT: 11.061 min Scan# 1  
 Delta R.T. 0.061 min  
 Lab File: VX047887.D  
 Acq: 29 Sep 2025 16:23

Instrument :  
 MSVOA\_X  
 ClientSampleId :  
 BP-VPB-184-GW-360-362



Tgt Ion: 75 Resp: 79905  
 Ion Ratio Lower Upper  
 75 100  
 53 0.0 83.4 125.2#  
 89 0.0 36.3 54.5#

