

Data Path : Z:\voasrv\HPCHEM1\MSVOA_X\Data\VX092925\
 Data File : VX047889.D
 Acq On : 29 Sep 2025 17:05
 Operator : JC/MD
 Sample : Q3213-07
 Misc : 5.0mL/MSVOA_X/WATER
 ALS Vial : 23 Sample Multiplier: 1

Instrument :
 MSVOA_X
 ClientSampleId :
 BP-VPB-184-GW-400-402

Quant Time: Sep 30 01:24:11 2025
 Quant Method : Z:\voasrv\HPCHEM1\MSVOA_X\Method\82X091625W.M
 Quant Title : SW846 8260
 QLast Update : Wed Sep 17 06:39:58 2025
 Response via : Initial Calibration

Compound	R.T.	QIon	Response	Conc	Units	Dev(Min)

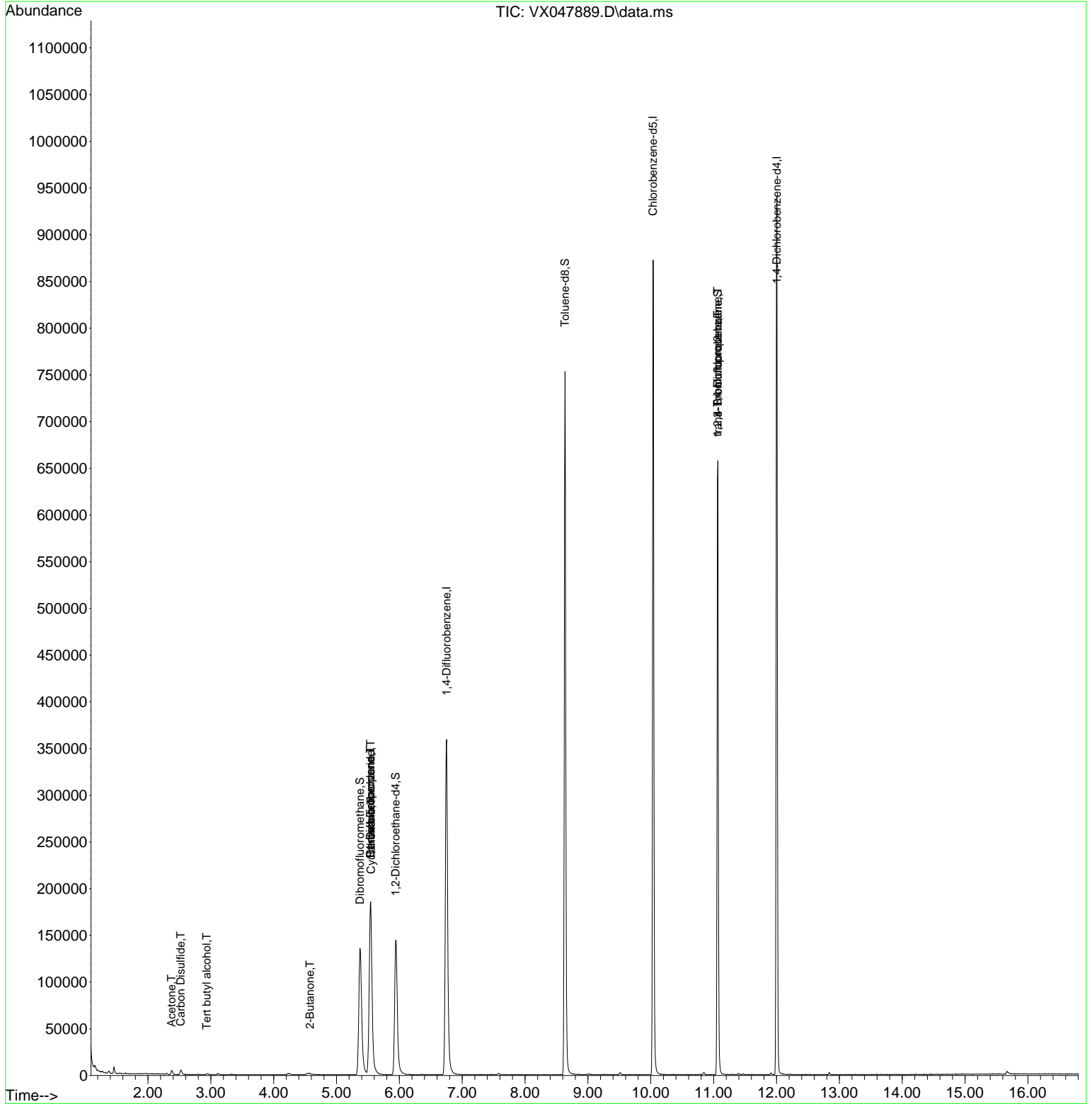
Internal Standards						
1) Pentafluorobenzene	5.544	168	187752	50.000	ug/l	0.00
34) 1,4-Difluorobenzene	6.751	114	393964	50.000	ug/l	0.00
63) Chlorobenzene-d5	10.037	117	400100	50.000	ug/l	0.00
72) 1,4-Dichlorobenzene-d4	12.006	152	194810	50.000	ug/l	0.00
System Monitoring Compounds						
33) 1,2-Dichloroethane-d4	5.940	65	158327	52.978	ug/l	0.00
Spiked Amount	50.000	Range 78 - 117	Recovery	=	105.960%	
35) Dibromofluoromethane	5.373	113	134608	50.947	ug/l	0.00
Spiked Amount	50.000	Range 75 - 124	Recovery	=	101.900%	
50) Toluene-d8	8.635	98	454743	49.740	ug/l	0.00
Spiked Amount	50.000	Range 92 - 112	Recovery	=	99.480%	
62) 4-Bromofluorobenzene	11.067	95	190319	54.852	ug/l	0.00
Spiked Amount	50.000	Range 83 - 123	Recovery	=	109.700%	
Target Compounds						
						Qvalue
11) Tert butyl alcohol	2.934	59	226	0.679	ug/l #	72
16) Acetone	2.374	43	5584	4.297	ug/l	100
17) Carbon Disulfide	2.520	76	1763	0.289	ug/l #	93
25) 2-Butanone	4.574	43	1040	0.642	ug/l	92
31) Cyclohexane	5.550	56	4164	1.054	ug/l #	1
36) 1,1-Dichloropropene	5.538	75	15981	4.139	ug/l #	51
38) Carbon Tetrachloride	5.544	117	20175	4.810	ug/l #	17
76) 1,2,3-Trichloropropane	11.061	75	99284	25.172	ug/l #	39
81) trans-1,4-Dichloro-2-b...	11.061	75	99284	64.191	ug/l #	8

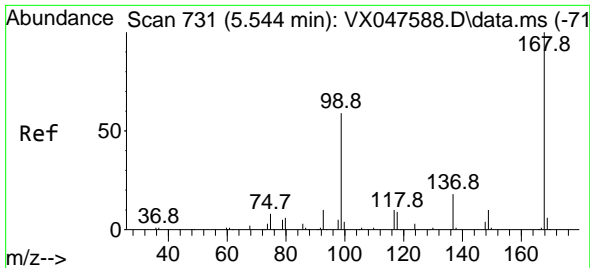
(#) = qualifier out of range (m) = manual integration (+) = signals summed

Data Path : Z:\voasrv\HPCHEM1\MSVOA_X\Data\VX092925\
 Data File : VX047889.D
 Acq On : 29 Sep 2025 17:05
 Operator : JC/MD
 Sample : Q3213-07
 Misc : 5.0mL/MSVOA_X/WATER
 ALS Vial : 23 Sample Multiplier: 1

Instrument :
 MSVOA_X
 ClientSampleId :
 BP-VPB-184-GW-400-402

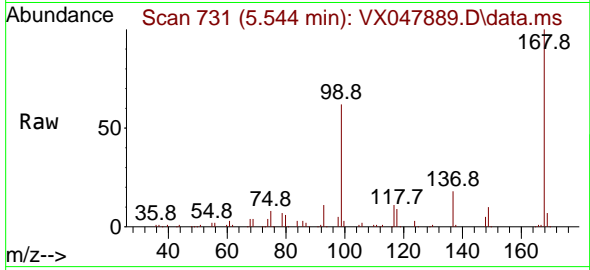
Quant Time: Sep 30 01:24:11 2025
 Quant Method : Z:\voasrv\HPCHEM1\MSVOA_X\Method\82X091625W.M
 Quant Title : SW846 8260
 QLast Update : Wed Sep 17 06:39:58 2025
 Response via : Initial Calibration



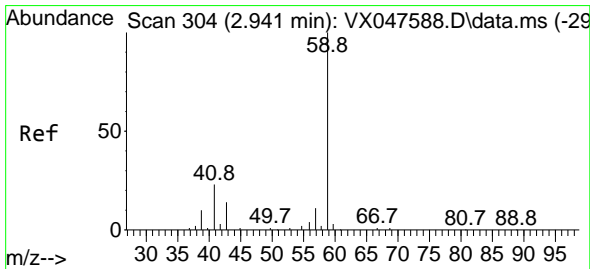
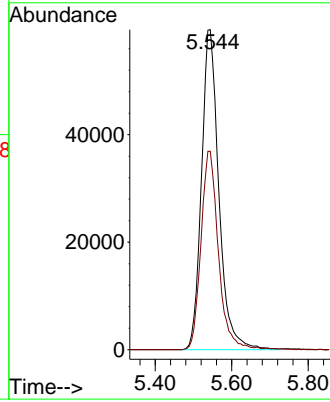
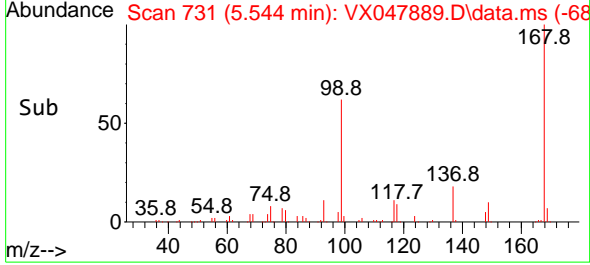


#1
 Pentafluorobenzene
 Concen: 50.000 ug/l
 RT: 5.544 min Scan# 71
 Delta R.T. -0.000 min
 Lab File: VX047889.D
 Acq: 29 Sep 2025 17:05

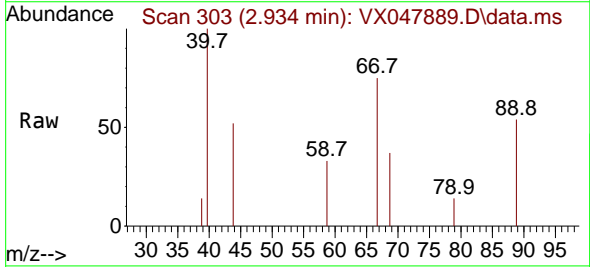
Instrument : MSVOA_X
 ClientSampleId : BP-VPB-184-GW-400-402



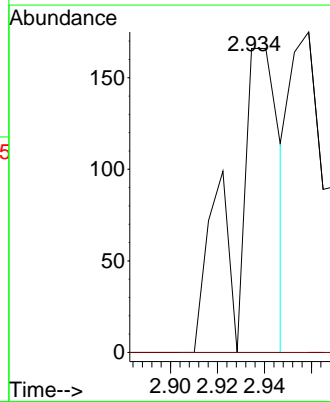
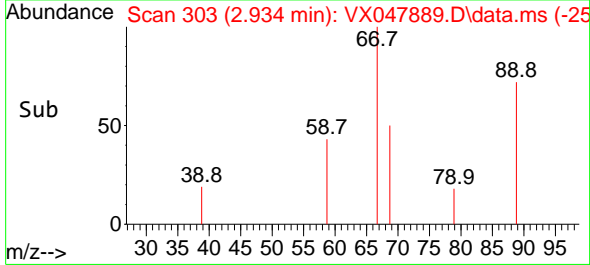
Tgt Ion:168 Resp: 187752
 Ion Ratio Lower Upper
 168 100
 99 62.0 48.8 73.2

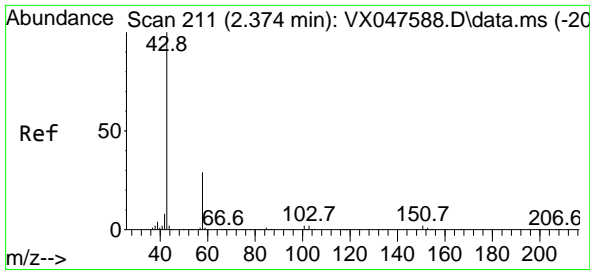


#11
 Tert butyl alcohol
 Concen: 0.679 ug/l
 RT: 2.934 min Scan# 303
 Delta R.T. -0.006 min
 Lab File: VX047889.D
 Acq: 29 Sep 2025 17:05



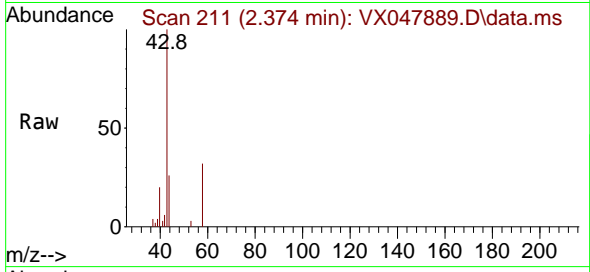
Tgt Ion: 59 Resp: 226
 Ion Ratio Lower Upper
 59 100
 57 0.0 8.3 12.5#



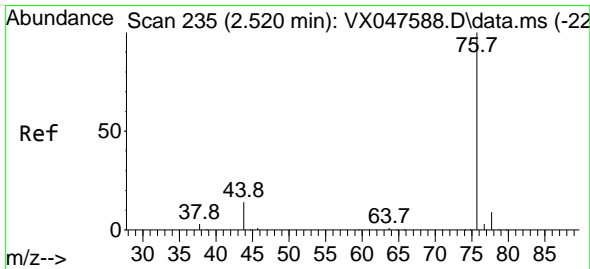
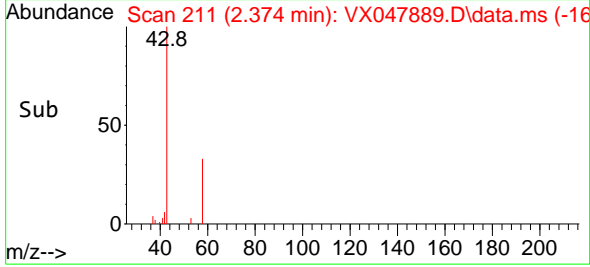
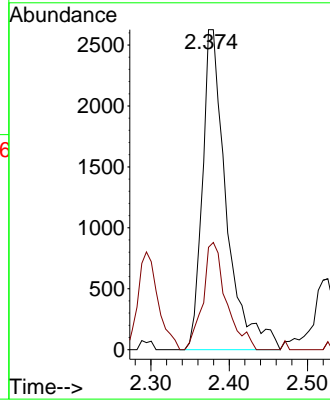


#16
 Acetone
 Concen: 4.297 ug/l
 RT: 2.374 min Scan# 211
 Delta R.T. -0.000 min
 Lab File: VX047889.D
 Acq: 29 Sep 2025 17:05

Instrument :
 MSVOA_X
 ClientSampleId :
 BP-VPB-184-GW-400-402

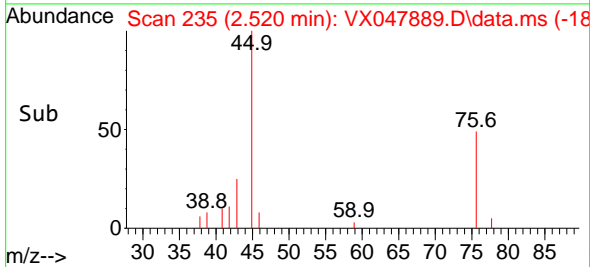
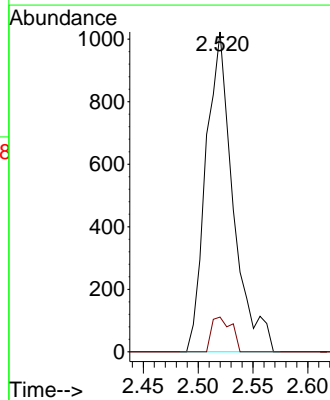
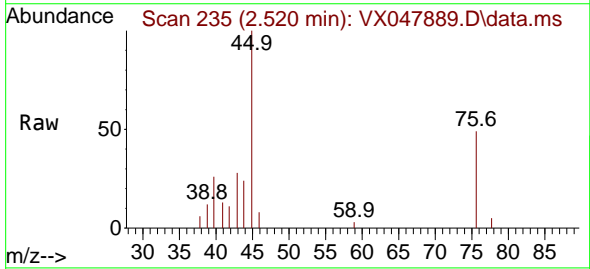


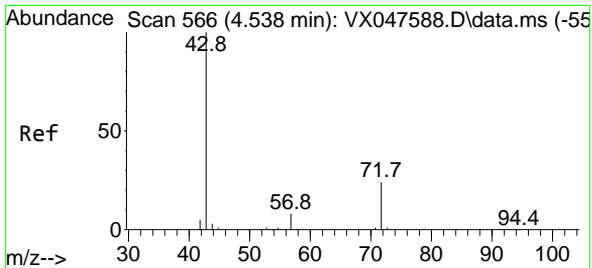
Tgt Ion: 43 Resp: 5584
 Ion Ratio Lower Upper
 43 100
 58 29.0 23.4 35.0



#17
 Carbon Disulfide
 Concen: 0.289 ug/l
 RT: 2.520 min Scan# 235
 Delta R.T. -0.000 min
 Lab File: VX047889.D
 Acq: 29 Sep 2025 17:05

Tgt Ion: 76 Resp: 1763
 Ion Ratio Lower Upper
 76 100
 78 10.9 6.8 10.2#

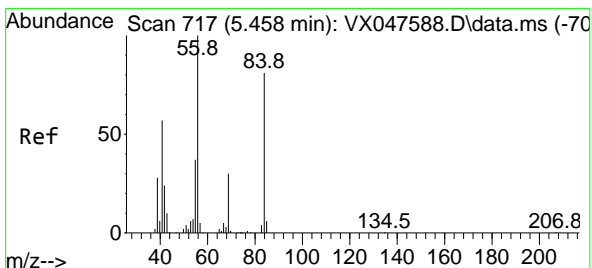
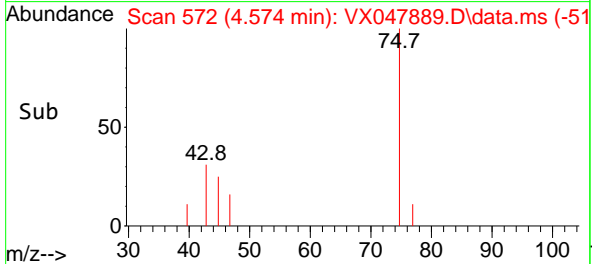
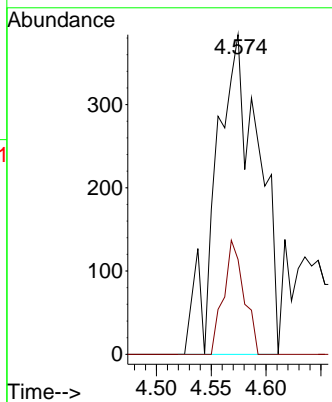
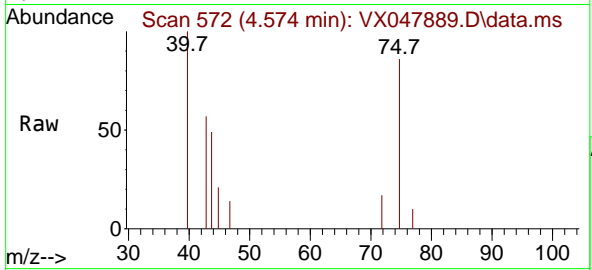




#25
 2-Butanone
 Concen: 0.642 ug/l
 RT: 4.574 min Scan# 51
 Delta R.T. 0.037 min
 Lab File: VX047889.D
 Acq: 29 Sep 2025 17:05

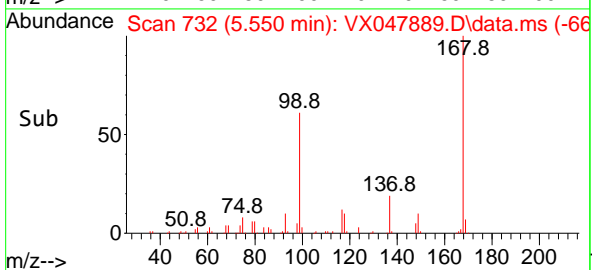
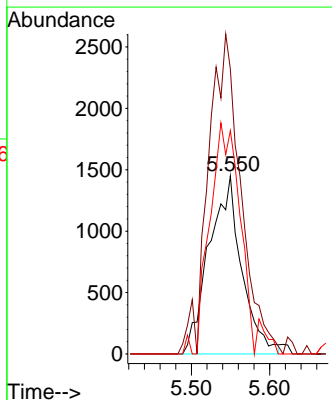
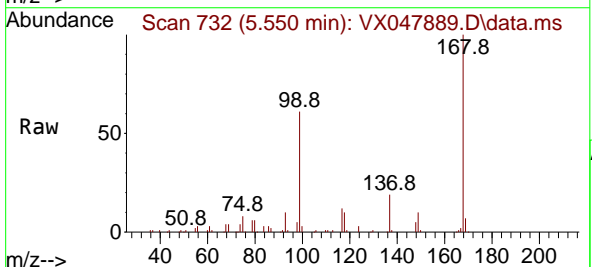
Instrument : MSVOA_X
 ClientSampleId : BP-VPB-184-GW-400-402

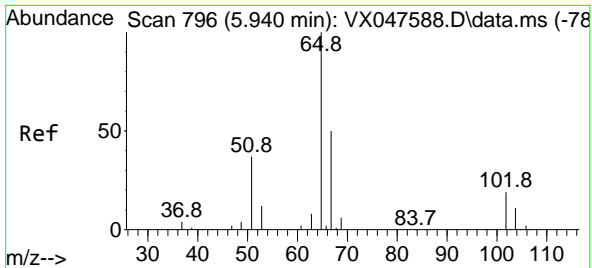
Tgt Ion: 43 Resp: 1040
 Ion Ratio Lower Upper
 43 100
 72 29.2 20.1 30.1



#31
 Cyclohexane
 Concen: 1.054 ug/l
 RT: 5.550 min Scan# 732
 Delta R.T. 0.091 min
 Lab File: VX047889.D
 Acq: 29 Sep 2025 17:05

Tgt Ion: 56 Resp: 4164
 Ion Ratio Lower Upper
 56 100
 69 159.9 23.8 35.8#
 84 125.4 64.6 97.0#

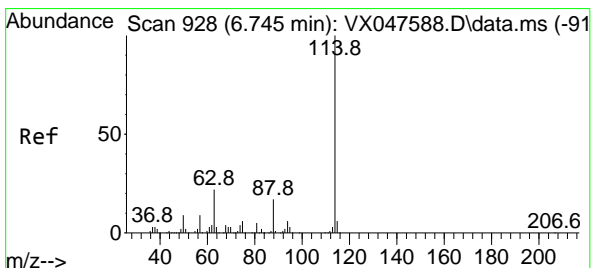
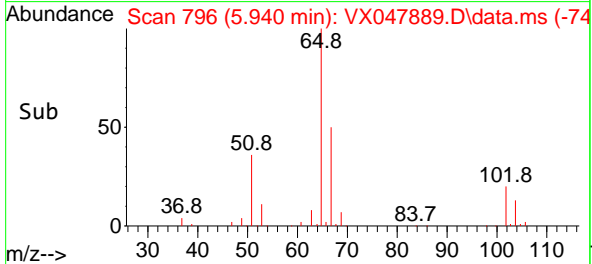
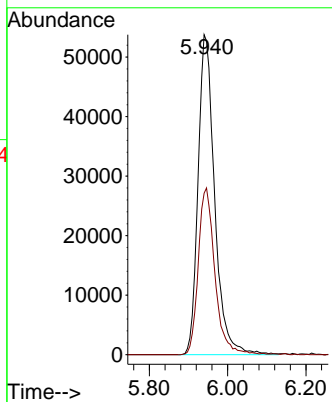
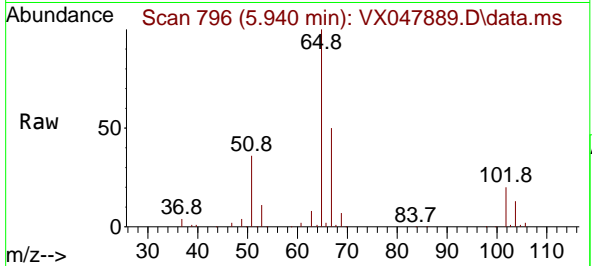




#33
 1,2-Dichloroethane-d4
 Concen: 52.978 ug/l
 RT: 5.940 min Scan# 796
 Delta R.T. -0.000 min
 Lab File: VX047889.D
 Acq: 29 Sep 2025 17:05

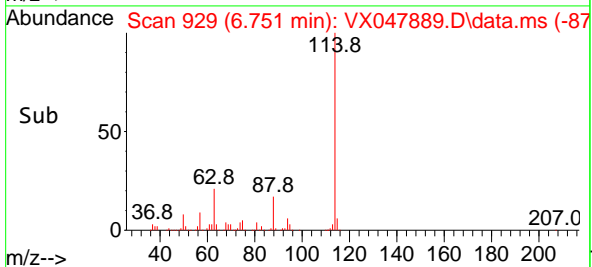
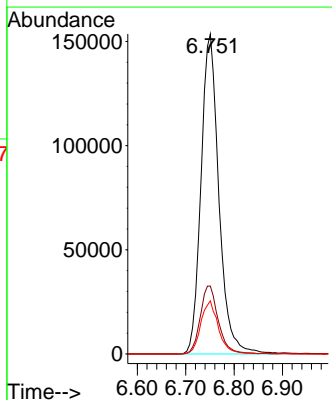
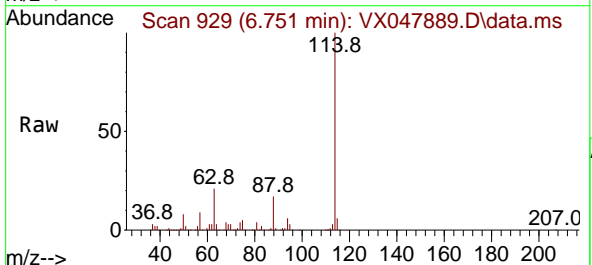
Instrument : MSVOA_X
 ClientSampleId : BP-VPB-184-GW-400-402

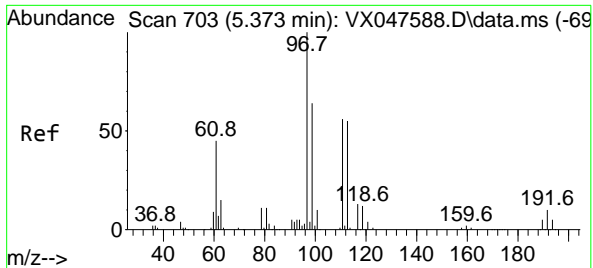
Tgt Ion: 65 Resp: 158327
 Ion Ratio Lower Upper
 65 100
 67 52.2 0.0 103.0



#34
 1,4-Difluorobenzene
 Concen: 50.000 ug/l
 RT: 6.751 min Scan# 929
 Delta R.T. 0.006 min
 Lab File: VX047889.D
 Acq: 29 Sep 2025 17:05

Tgt Ion: 114 Resp: 393964
 Ion Ratio Lower Upper
 114 100
 63 21.2 0.0 44.0
 88 16.6 0.0 34.2

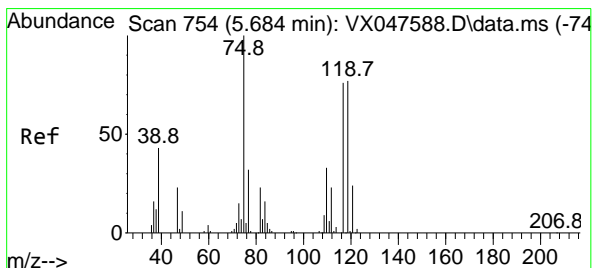
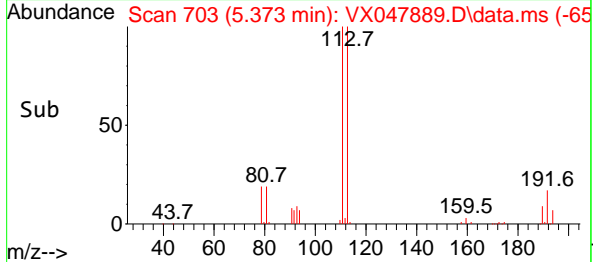
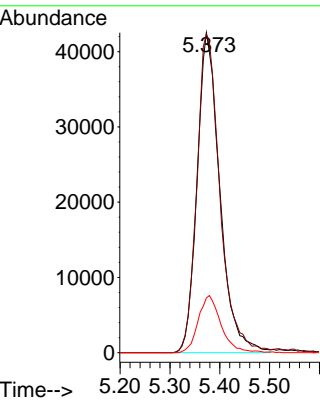
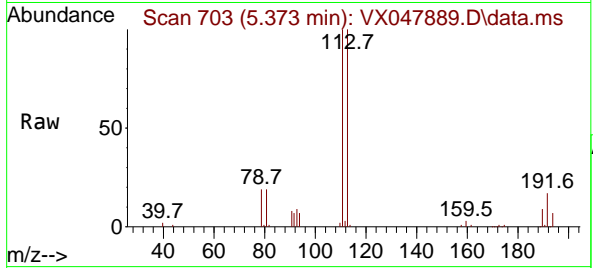




#35
 Dibromofluoromethane
 Concen: 50.947 ug/l
 RT: 5.373 min Scan# 703
 Delta R.T. -0.000 min
 Lab File: VX047889.D
 Acq: 29 Sep 2025 17:05

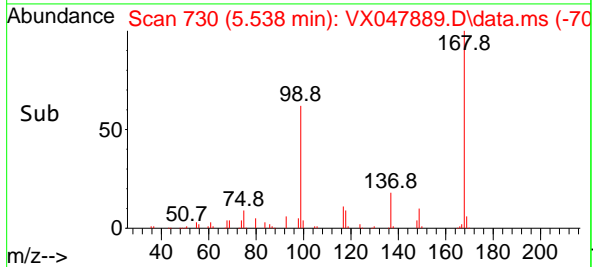
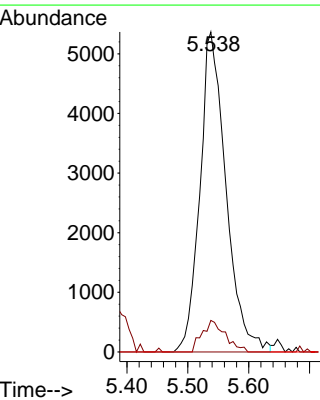
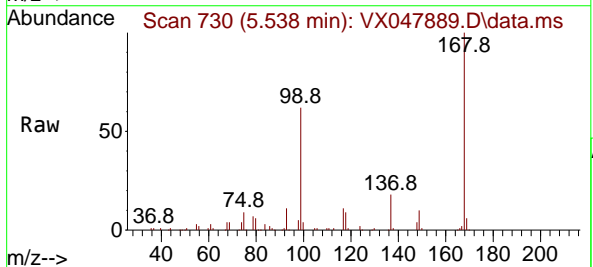
Instrument : MSVOA_X
 ClientSampleId : BP-VPB-184-GW-400-402

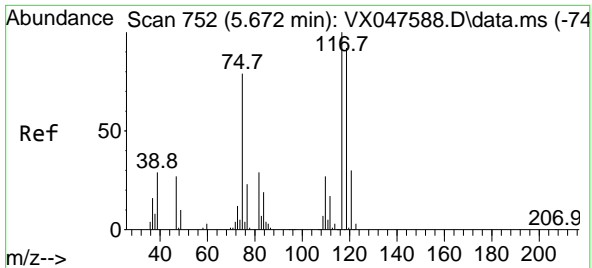
Tgt Ion	Resp	Lower	Upper
113	134608		
111	101.2	80.9	121.3
192	17.9	14.2	21.4



#36
 1,1-Dichloropropene
 Concen: 4.139 ug/l
 RT: 5.538 min Scan# 730
 Delta R.T. -0.146 min
 Lab File: VX047889.D
 Acq: 29 Sep 2025 17:05

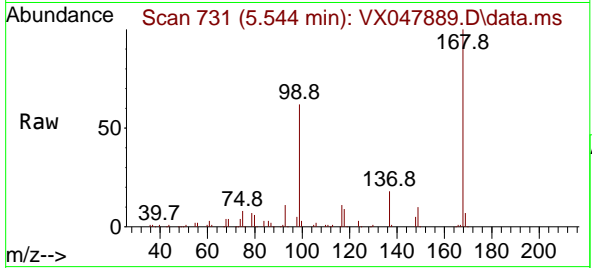
Tgt Ion	Resp	Lower	Upper
75	15981		
75	100		
110	8.7	16.7	50.1#
77	0.0	24.3	36.5#



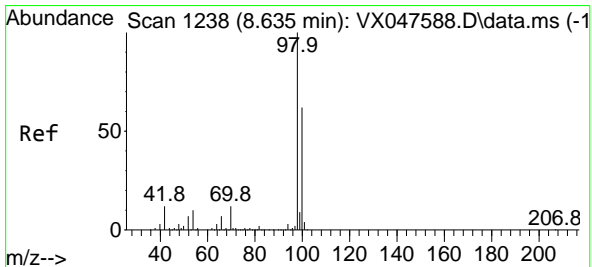
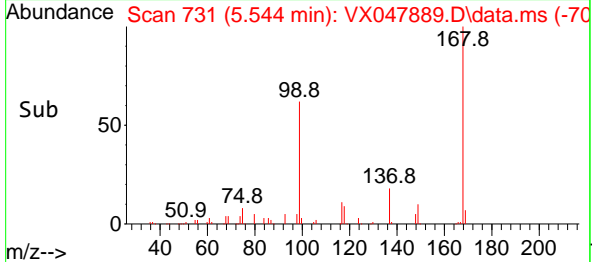
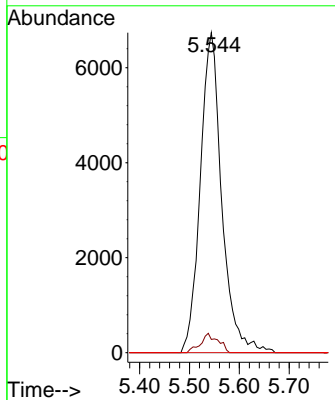


#38
 Carbon Tetrachloride
 Concen: 4.810 ug/l
 RT: 5.544 min Scan# 711
 Delta R.T. -0.128 min
 Lab File: VX047889.D
 Acq: 29 Sep 2025 17:05

Instrument : MSVOA_X
 ClientSampleId : BP-VPB-184-GW-400-402

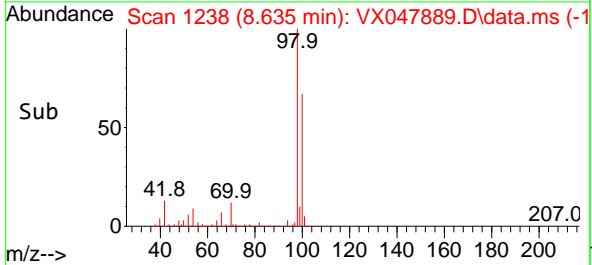
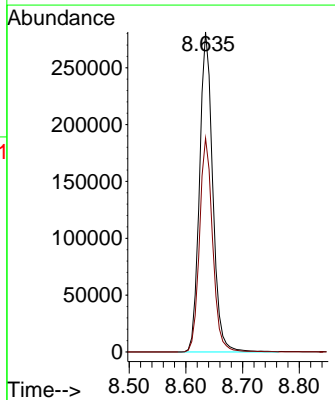
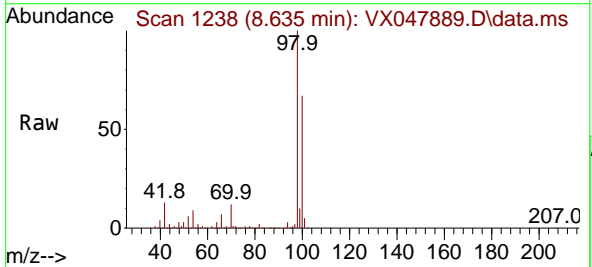


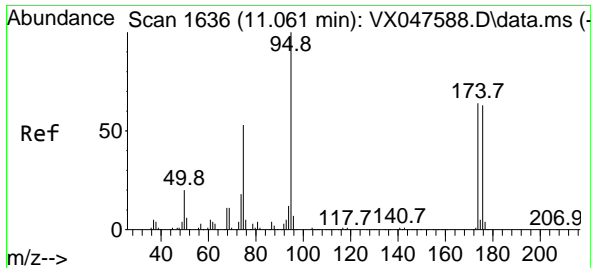
Tgt Ion: 117 Resp: 20175
 Ion Ratio Lower Upper
 117 100
 119 4.2 73.4 110.2#
 121 0.0 23.8 35.6#



#50
 Toluene-d8
 Concen: 49.740 ug/l
 RT: 8.635 min Scan# 1238
 Delta R.T. -0.000 min
 Lab File: VX047889.D
 Acq: 29 Sep 2025 17:05

Tgt Ion: 98 Resp: 454743
 Ion Ratio Lower Upper
 98 100
 100 66.5 53.0 79.4



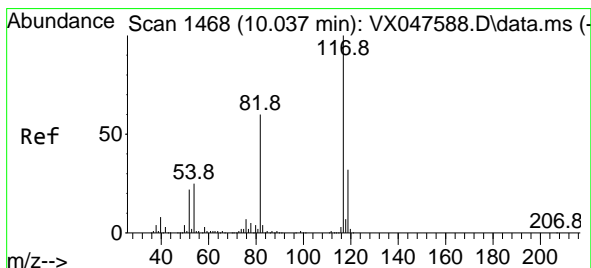
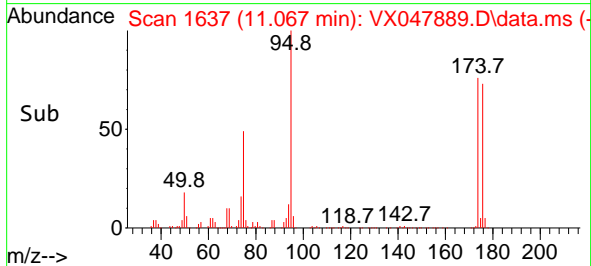
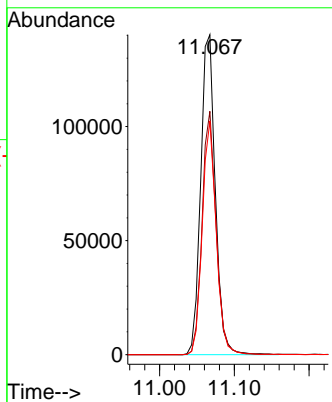
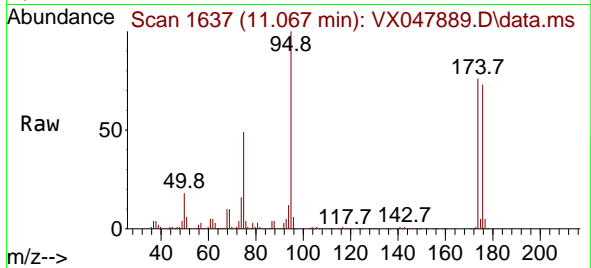


#62
 4-Bromofluorobenzene
 Concen: 54.852 ug/l
 RT: 11.067 min Scan# 11
 Delta R.T. 0.006 min
 Lab File: VX047889.D
 Acq: 29 Sep 2025 17:05

Instrument : MSVOA_X
 ClientSampleId : BP-VPB-184-GW-400-402

Tgt Ion: 95 Resp: 190319

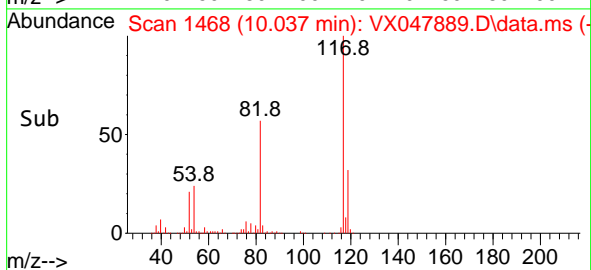
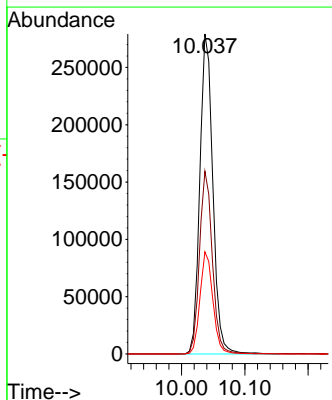
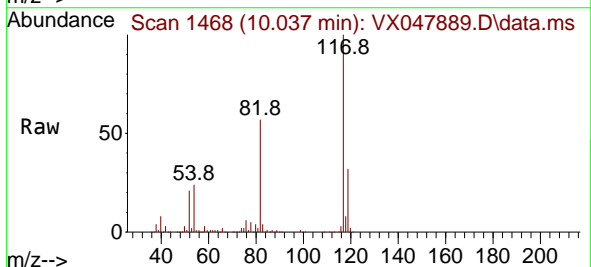
Ion	Ratio	Lower	Upper
95	100		
174	73.7	0.0	141.6
176	70.0	0.0	138.4

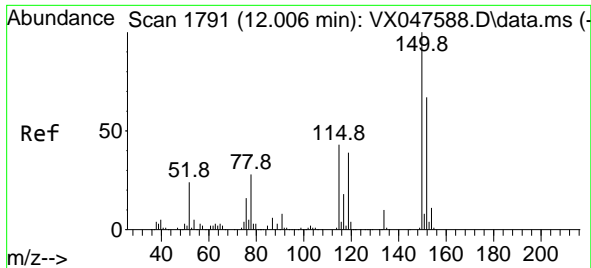


#63
 Chlorobenzene-d5
 Concen: 50.000 ug/l
 RT: 10.037 min Scan# 1468
 Delta R.T. -0.000 min
 Lab File: VX047889.D
 Acq: 29 Sep 2025 17:05

Tgt Ion: 117 Resp: 400100

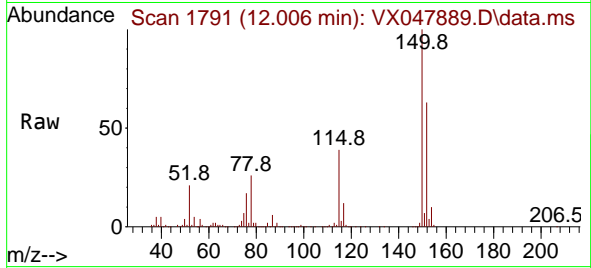
Ion	Ratio	Lower	Upper
117	100		
82	57.1	47.8	71.6
119	31.9	25.2	37.8



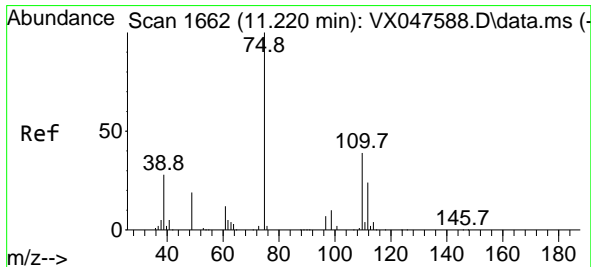
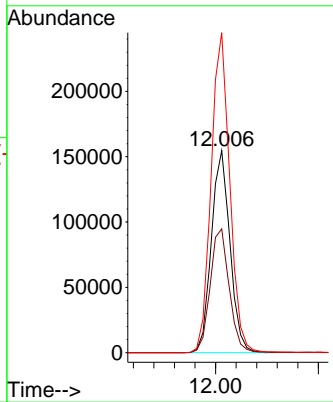
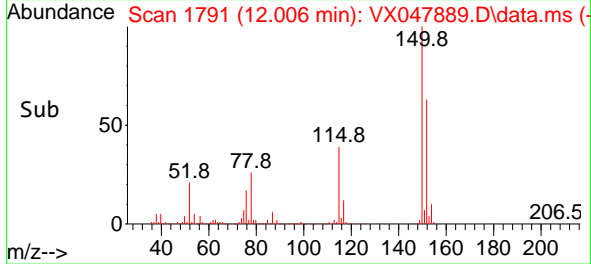


#72
 1,4-Dichlorobenzene-d4
 Concen: 50.000 ug/l
 RT: 12.006 min Scan# 11
 Delta R.T. -0.000 min
 Lab File: VX047889.D
 Acq: 29 Sep 2025 17:05

Instrument : MSVOA_X
 ClientSampleId : BP-VPB-184-GW-400-402

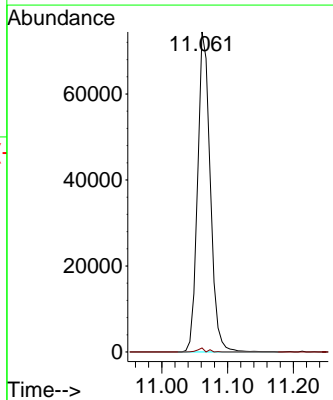
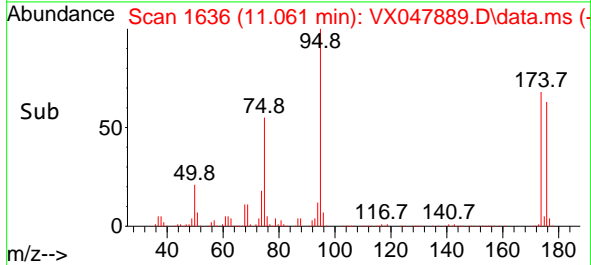
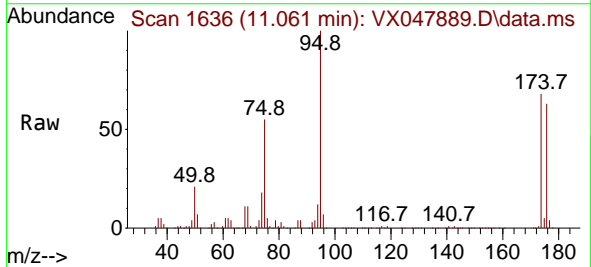


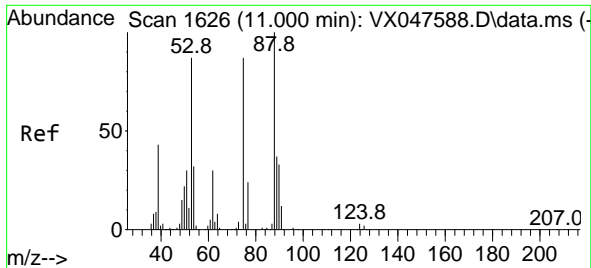
Tgt Ion:152 Resp: 194810
 Ion Ratio Lower Upper
 152 100
 115 62.9 44.9 134.5
 150 158.3 0.0 352.0



#76
 1,2,3-Trichloropropane
 Concen: 25.172 ug/l
 RT: 11.061 min Scan# 1636
 Delta R.T. -0.159 min
 Lab File: VX047889.D
 Acq: 29 Sep 2025 17:05

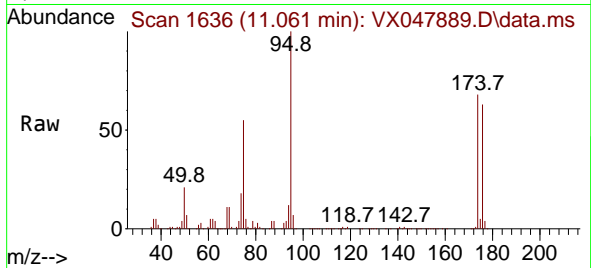
Tgt Ion: 75 Resp: 99284
 Ion Ratio Lower Upper
 75 100
 77 0.8 18.8 56.4#





#81
 trans-1,4-Dichloro-2-butene
 Concen: 64.191 ug/l
 RT: 11.061 min Scan# 1
 Delta R.T. 0.061 min
 Lab File: VX047889.D
 Acq: 29 Sep 2025 17:05

Instrument :
 MSVOA_X
 ClientSampleId :
 BP-VPB-184-GW-400-402



Tgt Ion: 75 Resp: 99284

Ion	Ratio	Lower	Upper
75	100		
53	0.0	83.4	125.2#
89	0.0	36.3	54.5#

