

Data Path : Z:\voasrv\HPCHEM1\MSVOA_X\Data\VX092925\
 Data File : VX047890.D
 Acq On : 29 Sep 2025 17:26
 Operator : JC/MD
 Sample : Q3213-08
 Misc : 5.0mL/MSVOA_X/WATER
 ALS Vial : 24 Sample Multiplier: 1

Instrument :
 MSVOA_X
 ClientSampleId :
 BP-VPB-184-GW-420-422

Quant Time: Sep 30 01:24:35 2025
 Quant Method : Z:\voasrv\HPCHEM1\MSVOA_X\Method\82X091625W.M
 Quant Title : SW846 8260
 QLast Update : Wed Sep 17 06:39:58 2025
 Response via : Initial Calibration

Compound	R.T.	QIon	Response	Conc	Units	Dev(Min)

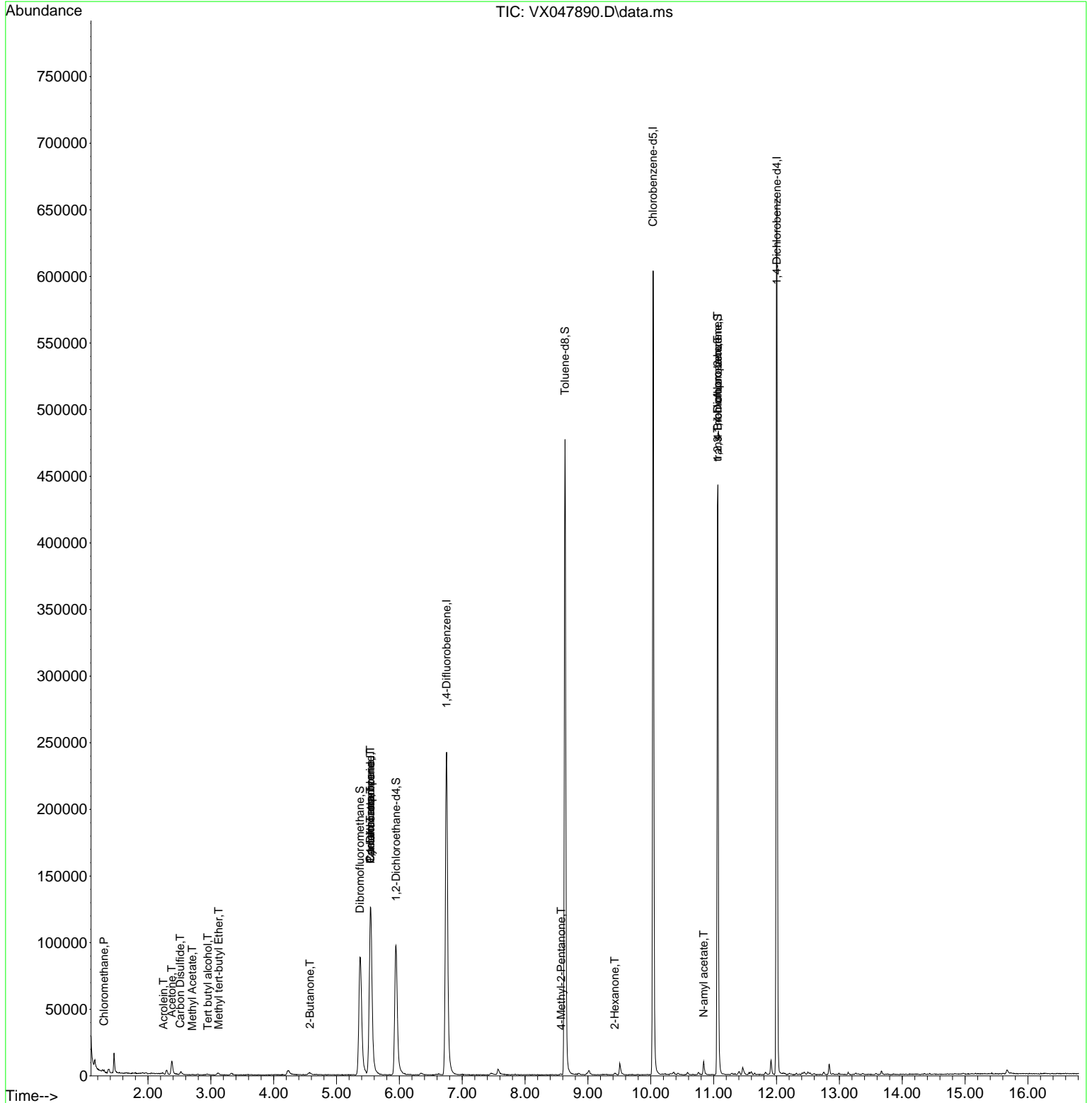
Internal Standards						
1) Pentafluorobenzene	5.544	168	128773	50.000	ug/l	0.00
34) 1,4-Difluorobenzene	6.751	114	265004	50.000	ug/l	0.00
63) Chlorobenzene-d5	10.037	117	273028	50.000	ug/l	0.00
72) 1,4-Dichlorobenzene-d4	12.006	152	140306	50.000	ug/l	0.00
System Monitoring Compounds						
33) 1,2-Dichloroethane-d4	5.946	65	105554	51.496	ug/l	0.00
Spiked Amount	50.000	Range 78 - 117	Recovery	=	103.000%	
35) Dibromofluoromethane	5.373	113	87688	49.339	ug/l	0.00
Spiked Amount	50.000	Range 75 - 124	Recovery	=	98.680%	
50) Toluene-d8	8.635	98	298703	48.572	ug/l	0.00
Spiked Amount	50.000	Range 92 - 112	Recovery	=	97.140%	
62) 4-Bromofluorobenzene	11.067	95	129436	55.459	ug/l	0.00
Spiked Amount	50.000	Range 83 - 123	Recovery	=	110.920%	
Target Compounds						
						Qvalue
3) Chloromethane	1.300	50	1095	0.625	ug/l	97
11) Tert butyl alcohol	2.953	59	124	0.543	ug/l #	72
13) Acrolein	2.245	56	66	0.314	ug/l #	1
16) Acetone	2.380	43	13227	14.841	ug/l	99
17) Carbon Disulfide	2.514	76	959	0.229	ug/l #	66
18) Methyl Acetate	2.703	43	486	0.245	ug/l #	54
19) Methyl tert-butyl Ether	3.123	73	1552	0.278	ug/l	100
25) 2-Butanone	4.574	43	3508	3.156	ug/l #	87
31) Cyclohexane	5.537	56	2432	0.898	ug/l #	1
36) 1,1-Dichloropropene	5.537	75	10877	4.188	ug/l #	50
38) Carbon Tetrachloride	5.537	117	13571	4.810	ug/l #	18
51) 4-Methyl-2-Pentanone	8.574	43	694	0.274	ug/l #	37
59) 2-Hexanone	9.427	43	1043	0.574	ug/l	94
74) N-amyl acetate	10.841	43	1698	0.349	ug/l #	9
76) 1,2,3-Trichloropropane	11.061	75	67062	23.607	ug/l #	39
81) trans-1,4-Dichloro-2-b...	11.061	75	67062	60.201	ug/l #	8

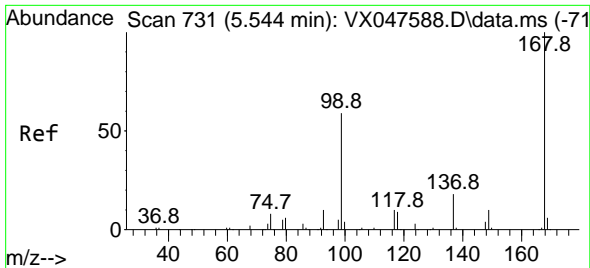
(#) = qualifier out of range (m) = manual integration (+) = signals summed

Data Path : Z:\voasrv\HPCHEM1\MSVOA_X\Data\VX092925\
 Data File : VX047890.D
 Acq On : 29 Sep 2025 17:26
 Operator : JC/MD
 Sample : Q3213-08
 Misc : 5.0mL/MSVOA_X/WATER
 ALS Vial : 24 Sample Multiplier: 1

Instrument :
 MSVOA_X
 ClientSampleId :
 BP-VPB-184-GW-420-422

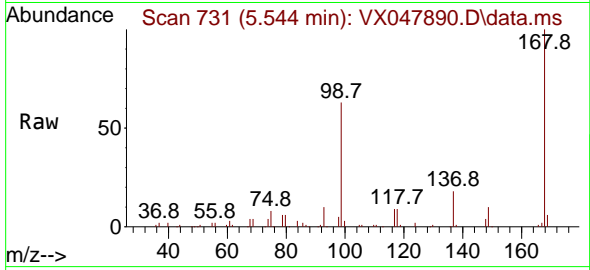
Quant Time: Sep 30 01:24:35 2025
 Quant Method : Z:\voasrv\HPCHEM1\MSVOA_X\Method\82X091625W.M
 Quant Title : SW846 8260
 QLast Update : Wed Sep 17 06:39:58 2025
 Response via : Initial Calibration



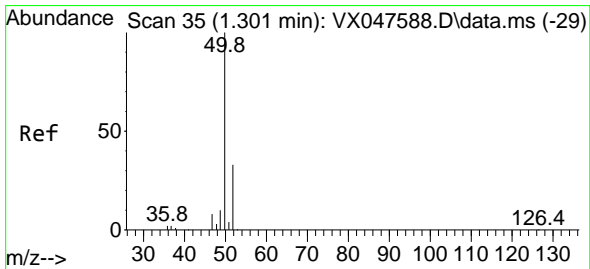
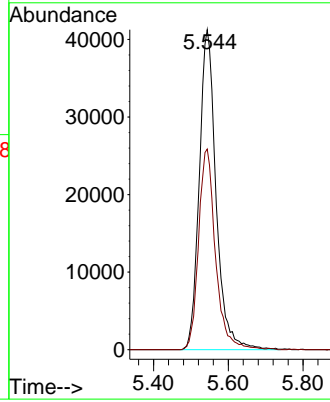
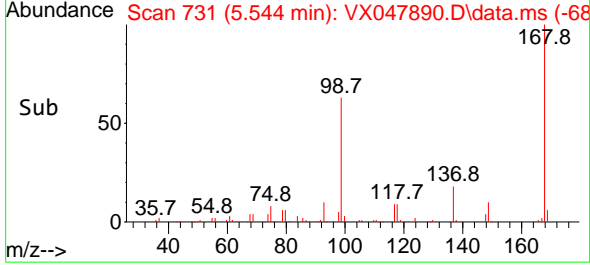


#1
 Pentafluorobenzene
 Concen: 50.000 ug/l
 RT: 5.544 min Scan# 71
 Delta R.T. -0.000 min
 Lab File: VX047890.D
 Acq: 29 Sep 2025 17:26

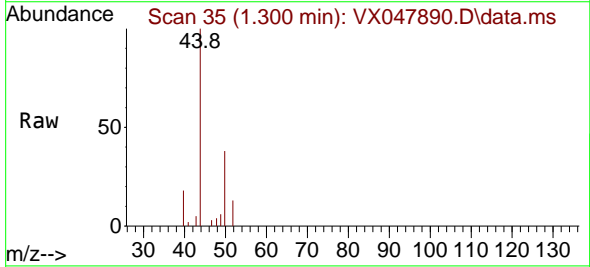
Instrument : MSVOA_X
 ClientSampleId : BP-VPB-184-GW-420-422



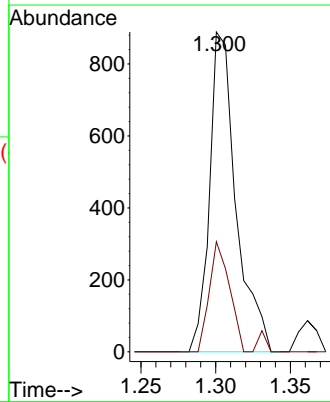
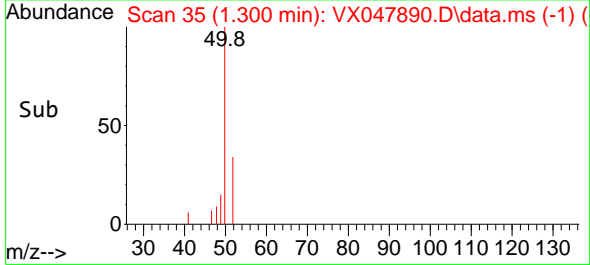
Tgt Ion:168 Resp: 128773
 Ion Ratio Lower Upper
 168 100
 99 62.7 48.8 73.2

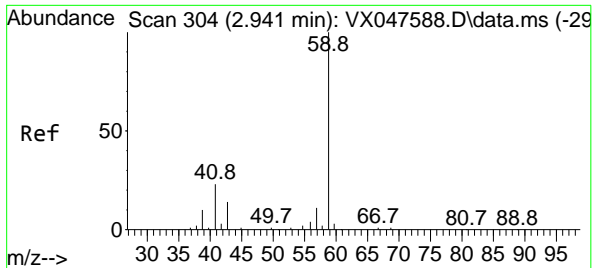


#3
 Chloromethane
 Concen: 0.625 ug/l
 RT: 1.300 min Scan# 35
 Delta R.T. -0.000 min
 Lab File: VX047890.D
 Acq: 29 Sep 2025 17:26



Tgt Ion: 50 Resp: 1095
 Ion Ratio Lower Upper
 50 100
 52 34.4 26.1 39.1

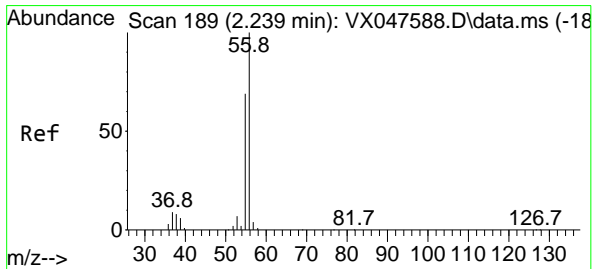
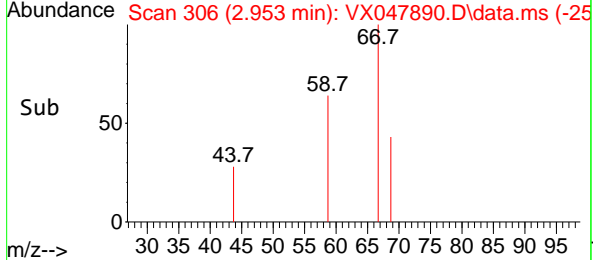
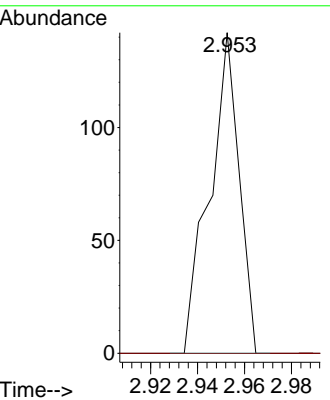
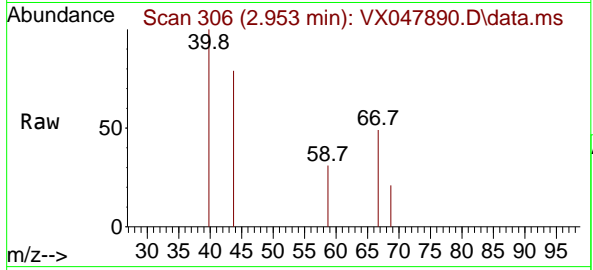




#11
 Tert butyl alcohol
 Concen: 0.543 ug/l
 RT: 2.953 min Scan# 30
 Delta R.T. 0.012 min
 Lab File: VX047890.D
 Acq: 29 Sep 2025 17:26

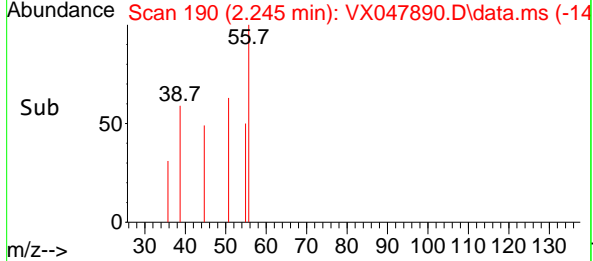
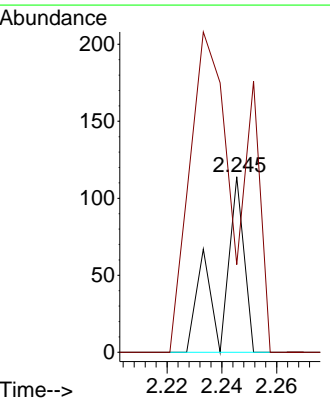
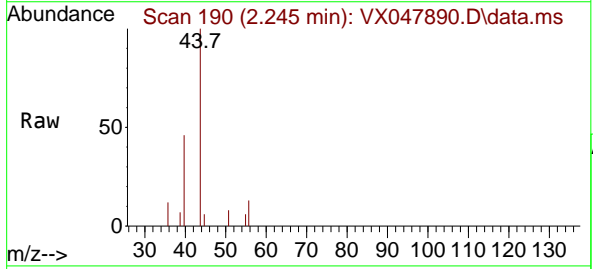
Instrument : MSVOA_X
 ClientSampleId : BP-VPB-184-GW-420-422

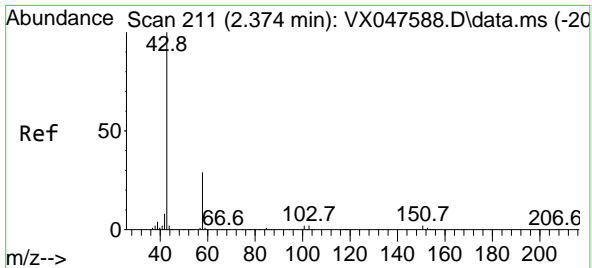
Tgt Ion: 59 Resp: 124
 Ion Ratio Lower Upper
 59 100
 57 0.0 8.3 12.5#



#13
 Acrolein
 Concen: 0.314 ug/l
 RT: 2.245 min Scan# 190
 Delta R.T. 0.006 min
 Lab File: VX047890.D
 Acq: 29 Sep 2025 17:26

Tgt Ion: 56 Resp: 66
 Ion Ratio Lower Upper
 56 100
 55 398.5 57.2 85.8#

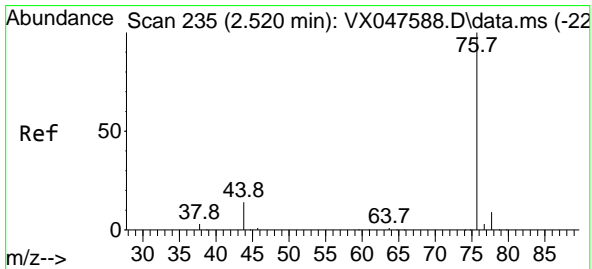
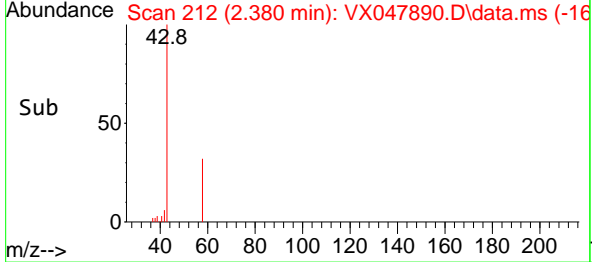
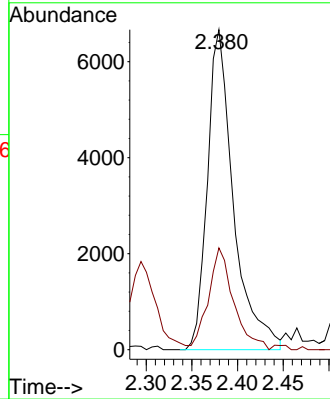
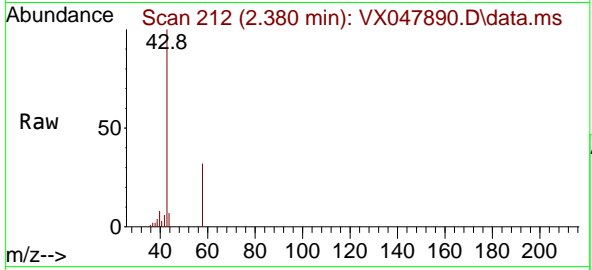




#16
 Acetone
 Concen: 14.841 ug/l
 RT: 2.380 min Scan# 211
 Delta R.T. 0.006 min
 Lab File: VX047890.D
 Acq: 29 Sep 2025 17:26

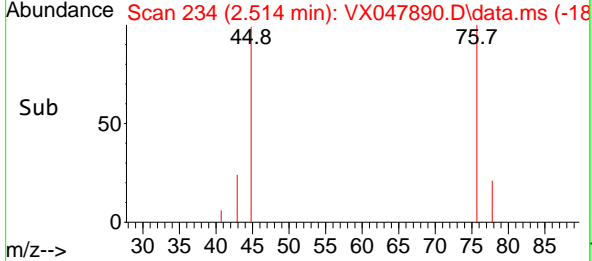
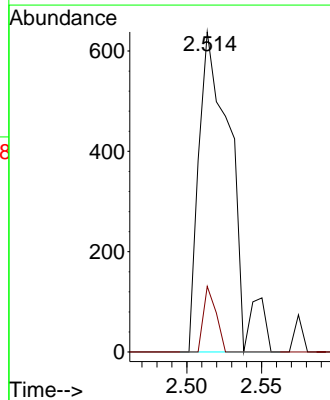
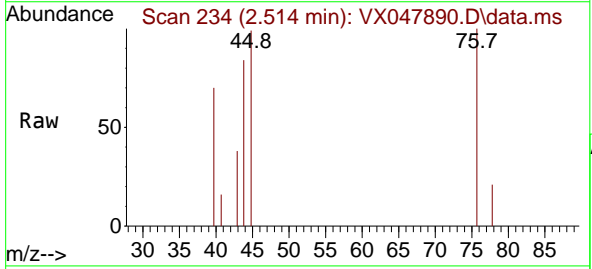
Instrument : MSVOA_X
 ClientSampleId : BP-VPB-184-GW-420-422

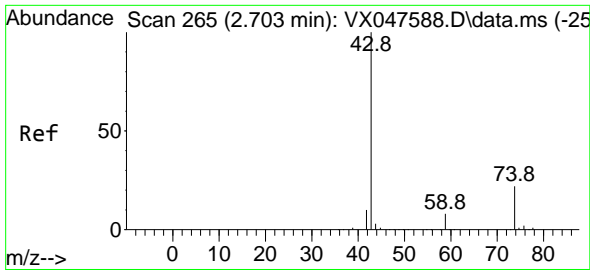
Tgt Ion: 43 Resp: 13227
 Ion Ratio Lower Upper
 43 100
 58 28.5 23.4 35.0



#17
 Carbon Disulfide
 Concen: 0.229 ug/l
 RT: 2.514 min Scan# 234
 Delta R.T. -0.006 min
 Lab File: VX047890.D
 Acq: 29 Sep 2025 17:26

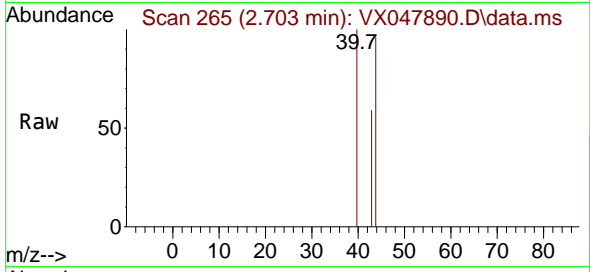
Tgt Ion: 76 Resp: 959
 Ion Ratio Lower Upper
 76 100
 78 20.5 6.8 10.2#



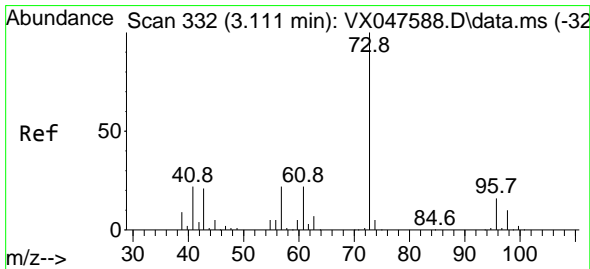
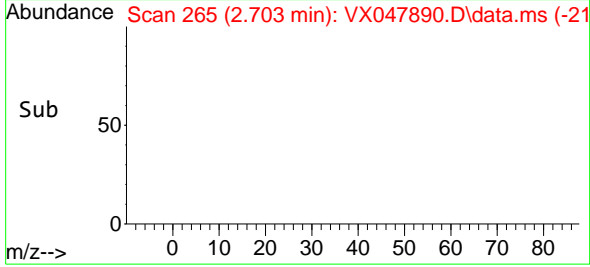
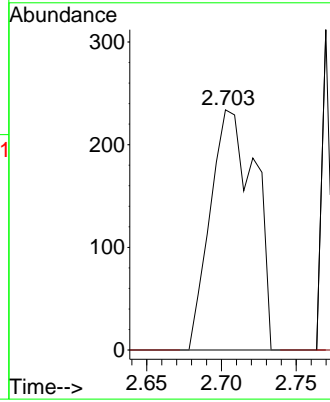


#18
 Methyl Acetate
 Concen: 0.245 ug/l
 RT: 2.703 min Scan# 201
 Delta R.T. -0.000 min
 Lab File: VX047890.D
 Acq: 29 Sep 2025 17:26

Instrument : MSVOA_X
 ClientSampleId : BP-VPB-184-GW-420-422

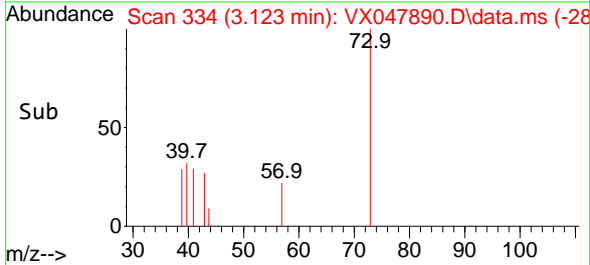
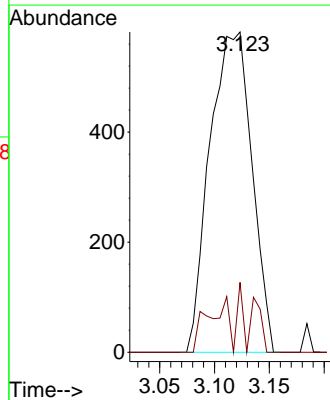
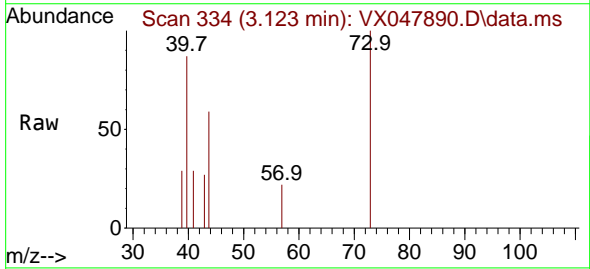


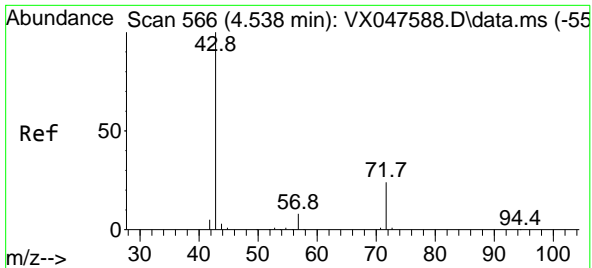
Tgt Ion: 43 Resp: 486
 Ion Ratio Lower Upper
 43 100
 74 0.0 17.4 26.2#



#19
 Methyl tert-butyl Ether
 Concen: 0.278 ug/l
 RT: 3.123 min Scan# 334
 Delta R.T. 0.012 min
 Lab File: VX047890.D
 Acq: 29 Sep 2025 17:26

Tgt Ion: 73 Resp: 1552
 Ion Ratio Lower Upper
 73 100
 57 21.8 17.4 26.2

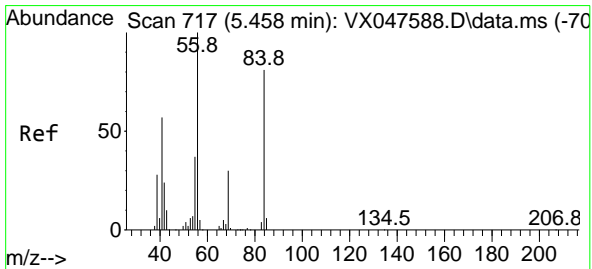
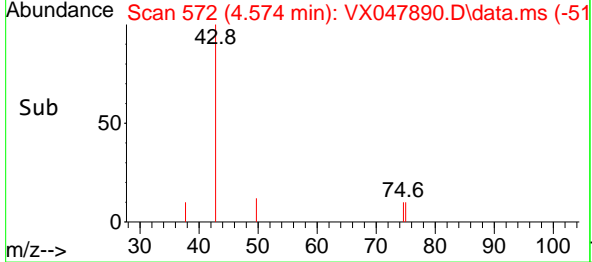
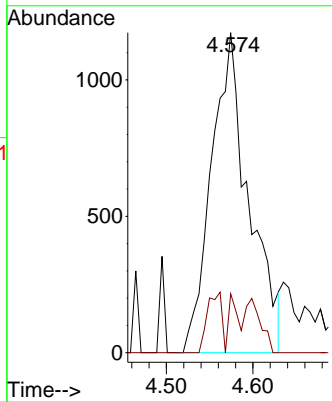
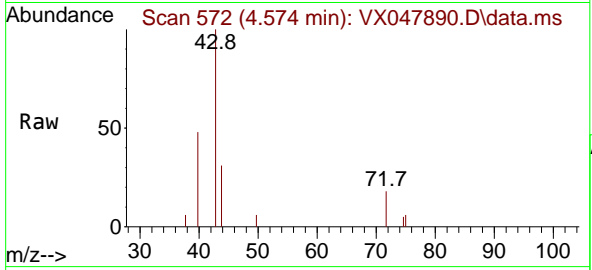




#25
 2-Butanone
 Concen: 3.156 ug/l
 RT: 4.574 min Scan# 51
 Delta R.T. 0.036 min
 Lab File: VX047890.D
 Acq: 29 Sep 2025 17:26

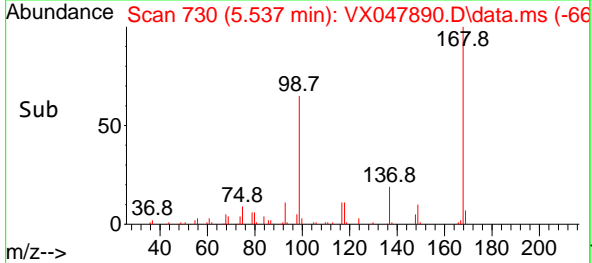
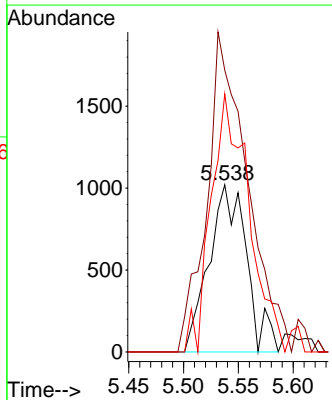
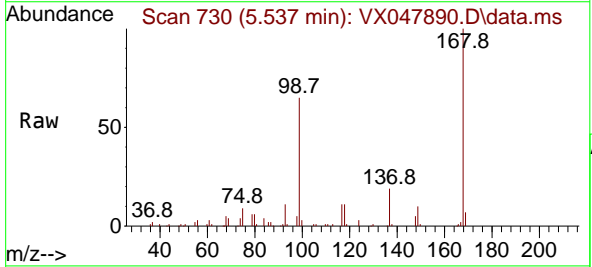
Instrument : MSVOA_X
 ClientSampleId : BP-VPB-184-GW-420-422

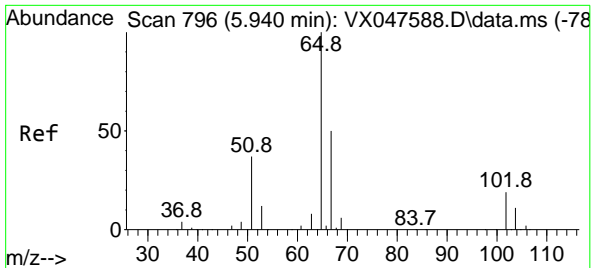
Tgt Ion: 43 Resp: 3508
 Ion Ratio Lower Upper
 43 100
 72 18.4 20.1 30.1#



#31
 Cyclohexane
 Concen: 0.898 ug/l
 RT: 5.537 min Scan# 730
 Delta R.T. 0.079 min
 Lab File: VX047890.D
 Acq: 29 Sep 2025 17:26

Tgt Ion: 56 Resp: 2432
 Ion Ratio Lower Upper
 56 100
 69 168.6 23.8 35.8#
 84 154.4 64.6 97.0#

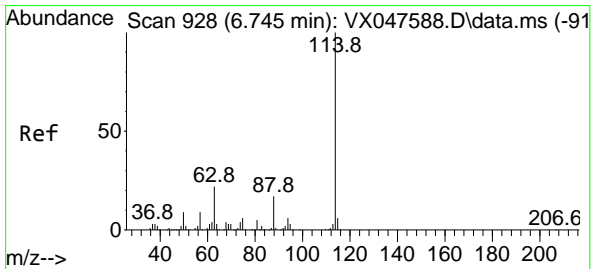
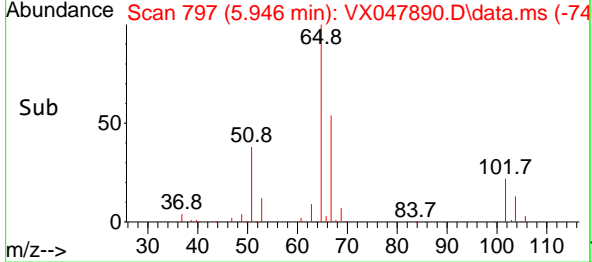
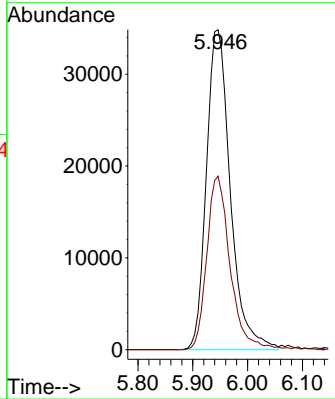
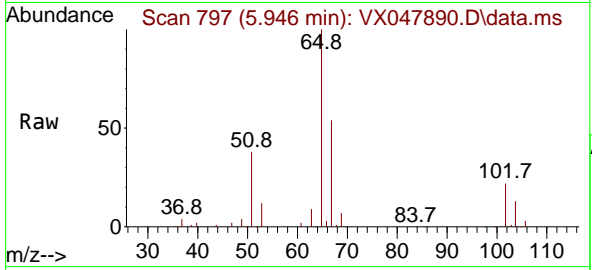




#33
 1,2-Dichloroethane-d4
 Concen: 51.496 ug/l
 RT: 5.946 min Scan# 796
 Delta R.T. 0.006 min
 Lab File: VX047890.D
 Acq: 29 Sep 2025 17:26

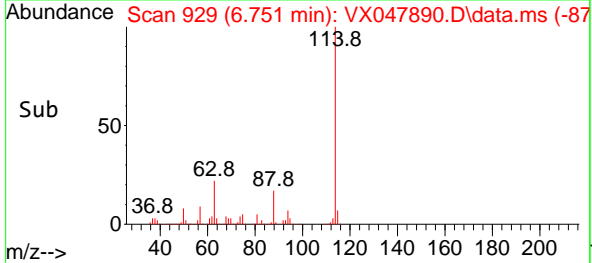
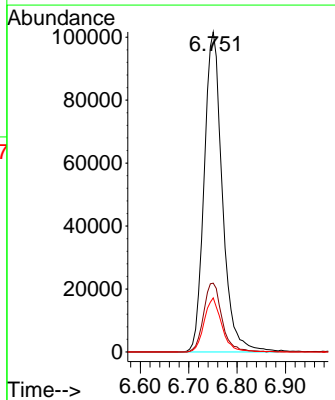
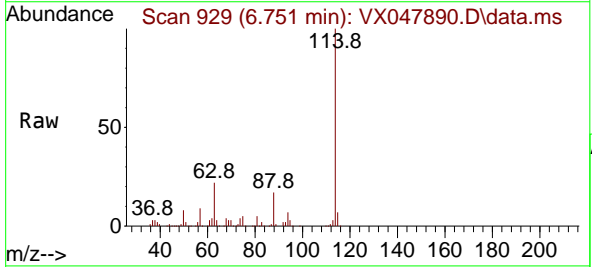
Instrument : MSVOA_X
 ClientSampleId : BP-VPB-184-GW-420-422

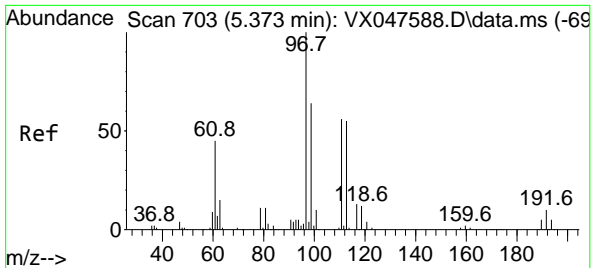
Tgt Ion	Resp	Lower	Upper
65	105554	100	
67	52.8	0.0	103.0



#34
 1,4-Difluorobenzene
 Concen: 50.000 ug/l
 RT: 6.751 min Scan# 929
 Delta R.T. 0.006 min
 Lab File: VX047890.D
 Acq: 29 Sep 2025 17:26

Tgt Ion	Resp	Lower	Upper
114	265004	100	
63	21.5	0.0	44.0
88	16.9	0.0	34.2

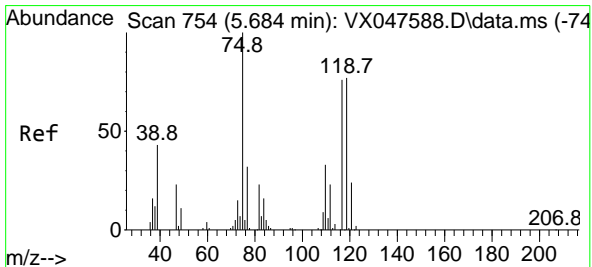
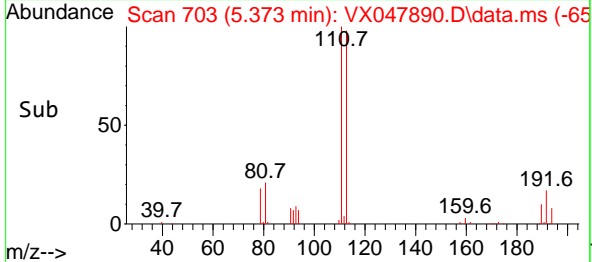
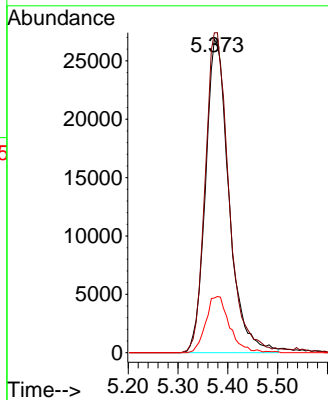
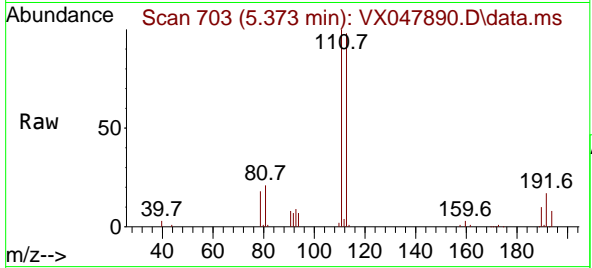




#35
 Dibromofluoromethane
 Concen: 49.339 ug/l
 RT: 5.373 min Scan# 703
 Delta R.T. -0.000 min
 Lab File: VX047890.D
 Acq: 29 Sep 2025 17:26

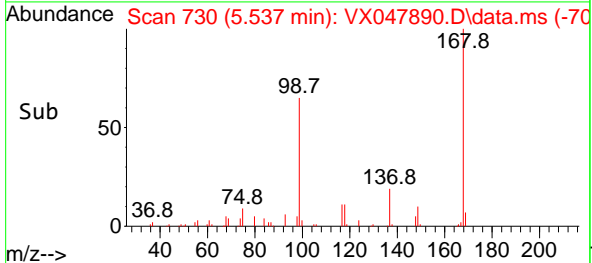
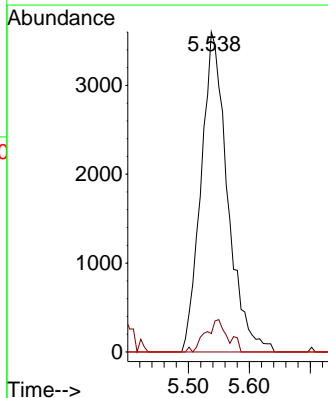
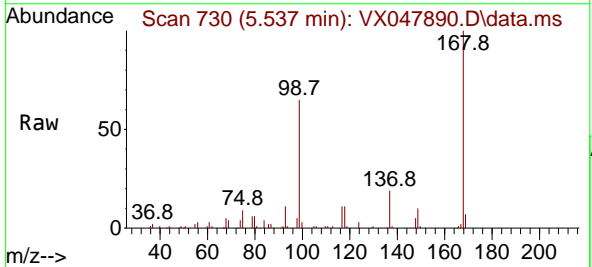
Instrument : MSVOA_X
 ClientSampleId : BP-VPB-184-GW-420-422

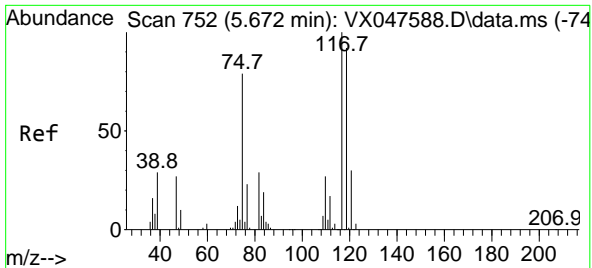
Tgt Ion	Resp	Lower	Upper
113	87688		
113	100		
111	103.3	80.9	121.3
192	18.3	14.2	21.4



#36
 1,1-Dichloropropene
 Concen: 4.188 ug/l
 RT: 5.537 min Scan# 730
 Delta R.T. -0.147 min
 Lab File: VX047890.D
 Acq: 29 Sep 2025 17:26

Tgt Ion	Resp	Lower	Upper
75	10877		
75	100		
110	8.4	16.7	50.1#
77	0.0	24.3	36.5#

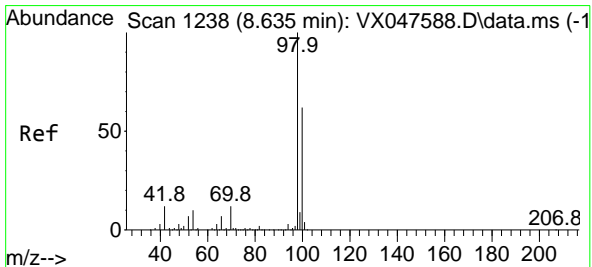
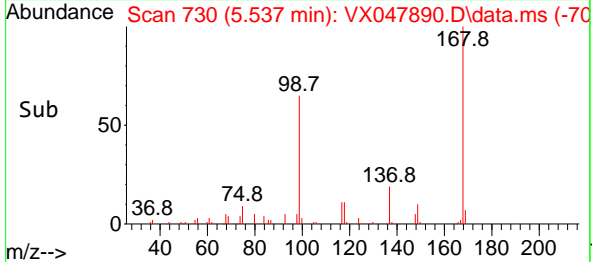
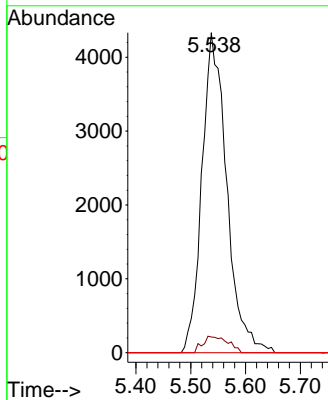
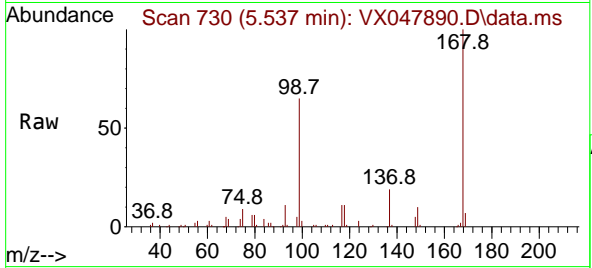




#38
 Carbon Tetrachloride
 Concen: 4.810 ug/l
 RT: 5.537 min Scan# 71
 Delta R.T. -0.134 min
 Lab File: VX047890.D
 Acq: 29 Sep 2025 17:26

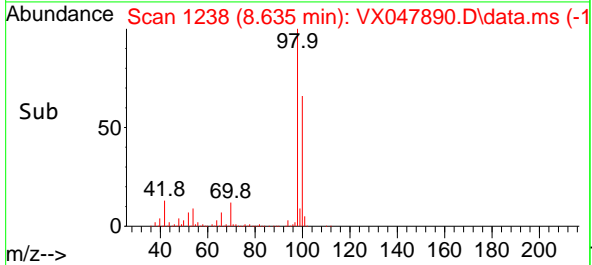
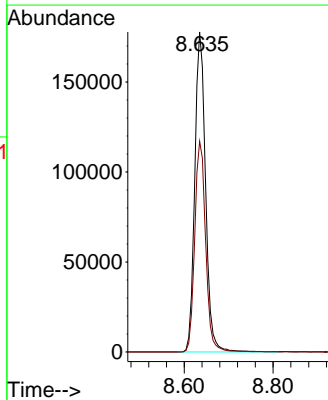
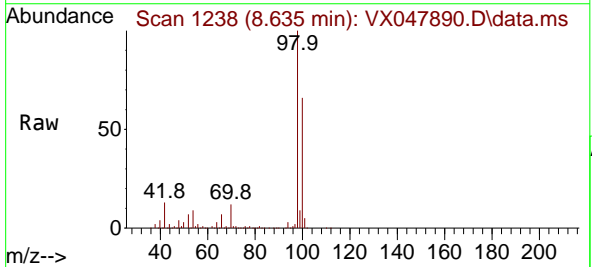
Instrument : MSVOA_X
 ClientSampleId : BP-VPB-184-GW-420-422

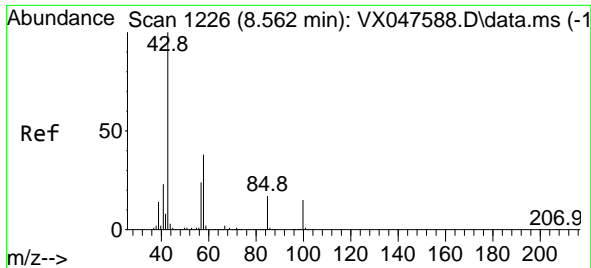
Tgt Ion:117 Resp: 13571
 Ion Ratio Lower Upper
 117 100
 119 4.9 73.4 110.2#
 121 0.0 23.8 35.6#



#50
 Toluene-d8
 Concen: 48.572 ug/l
 RT: 8.635 min Scan# 1238
 Delta R.T. -0.000 min
 Lab File: VX047890.D
 Acq: 29 Sep 2025 17:26

Tgt Ion: 98 Resp: 298703
 Ion Ratio Lower Upper
 98 100
 100 66.9 53.0 79.4

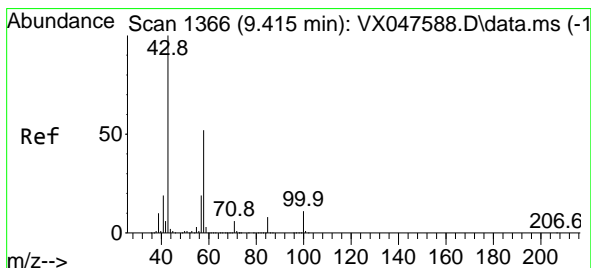
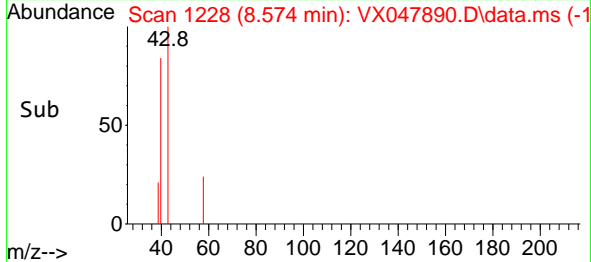
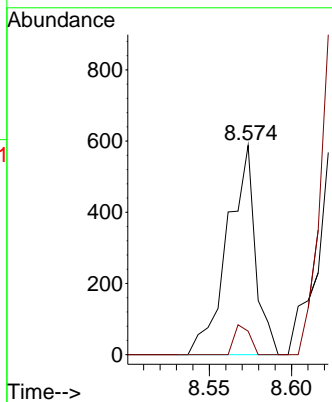
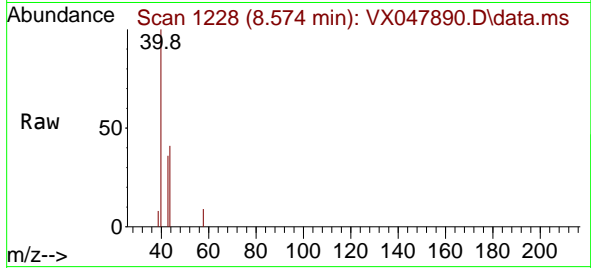




#51
 4-Methyl-2-Pentanone
 Concen: 0.274 ug/l
 RT: 8.574 min Scan# 11
 Delta R.T. 0.012 min
 Lab File: VX047890.D
 Acq: 29 Sep 2025 17:26

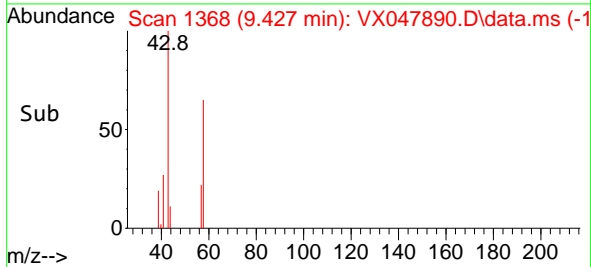
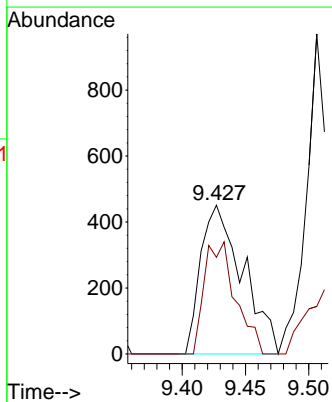
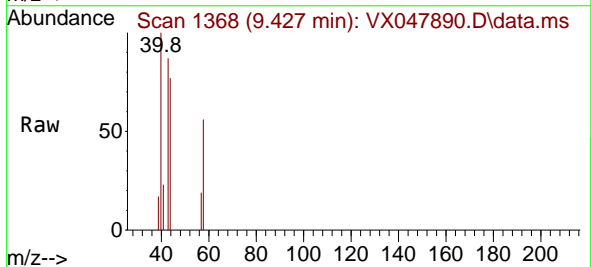
Instrument :
 MSVOA_X
 ClientSampleId :
 BP-VPB-184-GW-420-422

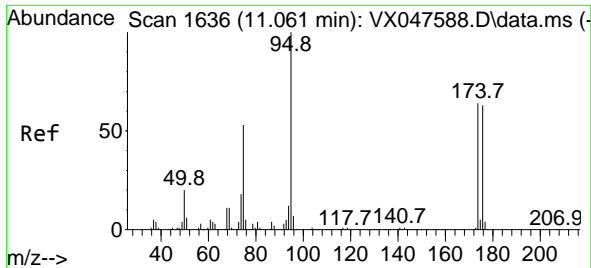
Tgt Ion: 43 Resp: 694
 Ion Ratio Lower Upper
 43 100
 58 0.0 30.3 45.5#



#59
 2-Hexanone
 Concen: 0.574 ug/l
 RT: 9.427 min Scan# 1368
 Delta R.T. 0.012 min
 Lab File: VX047890.D
 Acq: 29 Sep 2025 17:26

Tgt Ion: 43 Resp: 1043
 Ion Ratio Lower Upper
 43 100
 58 56.0 26.1 78.2



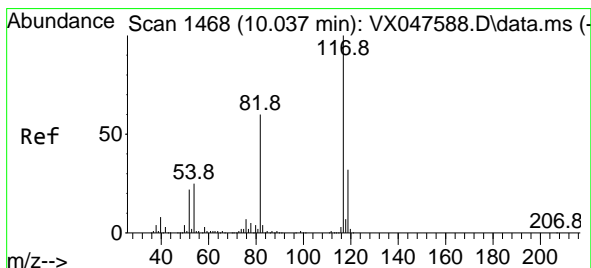
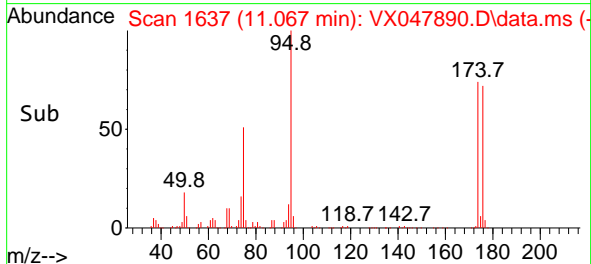
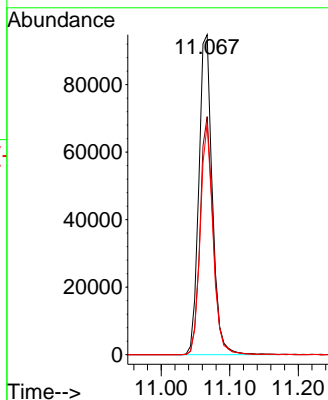
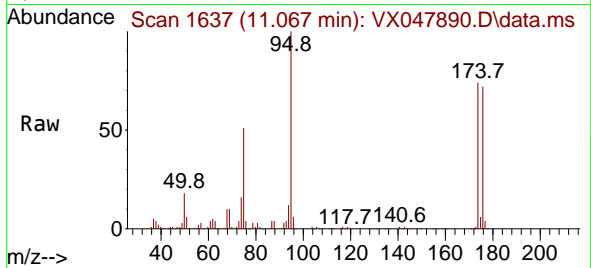


#62
 4-Bromofluorobenzene
 Concen: 55.459 ug/l
 RT: 11.067 min Scan# 11
 Delta R.T. 0.006 min
 Lab File: VX047890.D
 Acq: 29 Sep 2025 17:26

Instrument :
 MSVOA_X
 ClientSampleId :
 BP-VPB-184-GW-420-422

Tgt Ion: 95 Resp: 129436

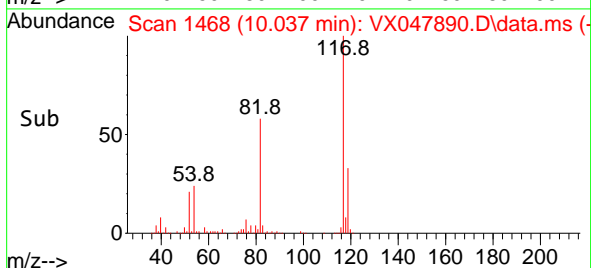
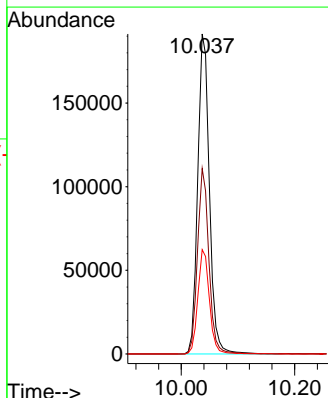
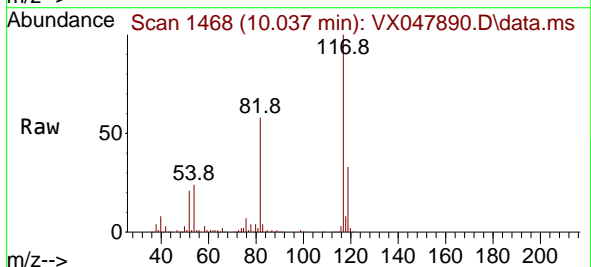
Ion	Ratio	Lower	Upper
95	100		
174	72.4	0.0	141.6
176	68.5	0.0	138.4

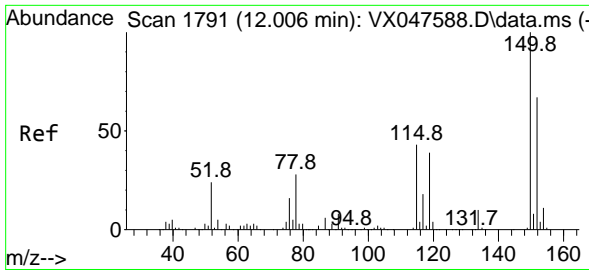


#63
 Chlorobenzene-d5
 Concen: 50.000 ug/l
 RT: 10.037 min Scan# 1468
 Delta R.T. -0.000 min
 Lab File: VX047890.D
 Acq: 29 Sep 2025 17:26

Tgt Ion: 117 Resp: 273028

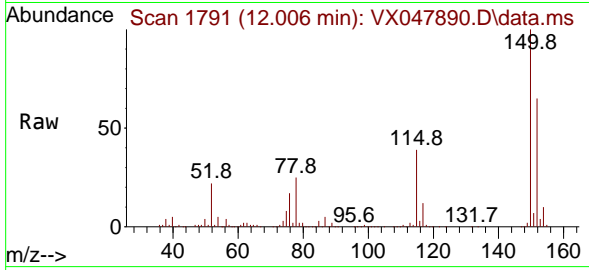
Ion	Ratio	Lower	Upper
117	100		
82	58.0	47.8	71.6
119	32.6	25.2	37.8



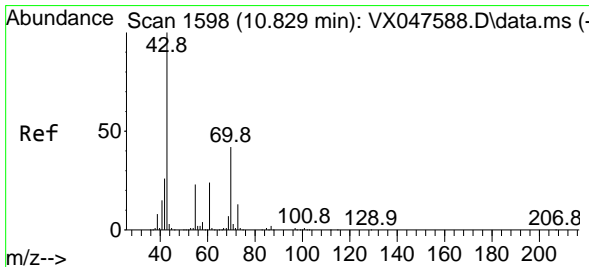
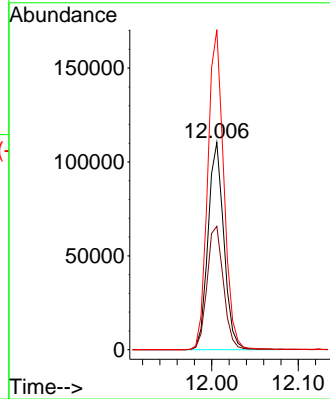
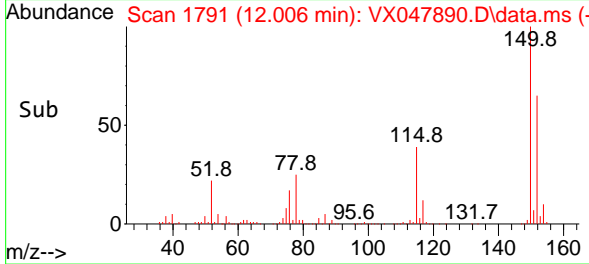


#72
 1,4-Dichlorobenzene-d4
 Concen: 50.000 ug/l
 RT: 12.006 min Scan# 11
 Delta R.T. -0.000 min
 Lab File: VX047890.D
 Acq: 29 Sep 2025 17:26

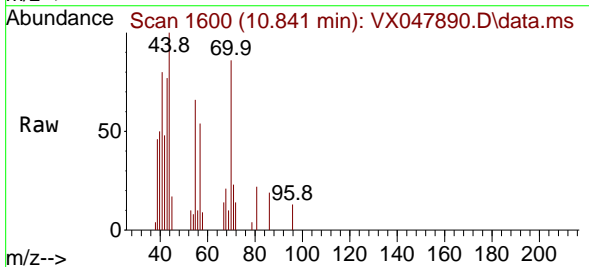
Instrument : MSVOA_X
 ClientSampleId : BP-VPB-184-GW-420-422



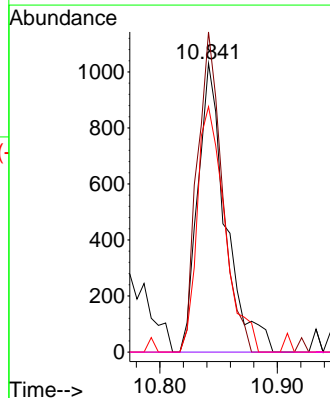
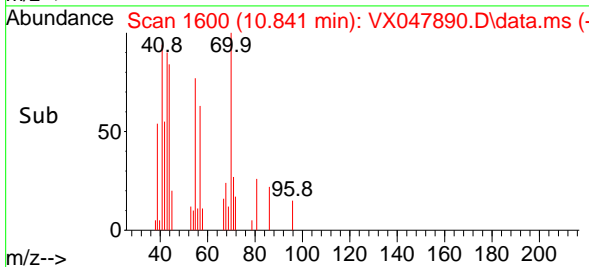
Tgt Ion:152 Resp: 140306
 Ion Ratio Lower Upper
 152 100
 115 62.0 44.9 134.5
 150 156.0 0.0 352.0

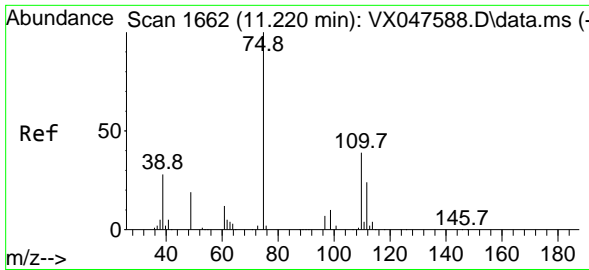


#74
 N-ethyl acetate
 Concen: 0.349 ug/l
 RT: 10.841 min Scan# 1600
 Delta R.T. 0.012 min
 Lab File: VX047890.D
 Acq: 29 Sep 2025 17:26



Tgt Ion: 43 Resp: 1698
 Ion Ratio Lower Upper
 43 100
 70 99.7 32.0 48.0#
 55 85.2 18.9 28.3#
 61 0.0 18.8 28.2#

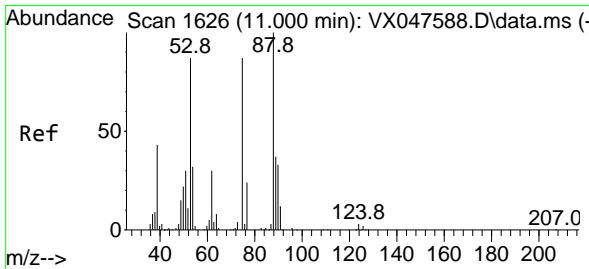
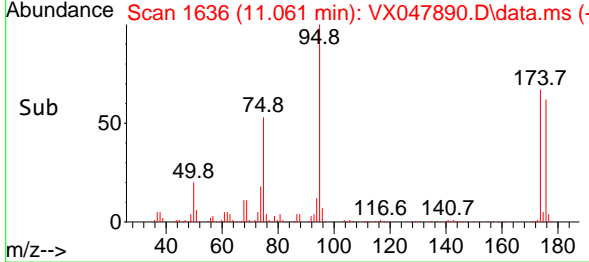
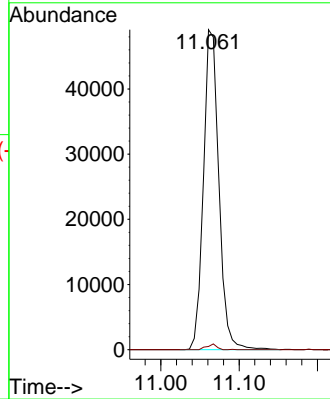
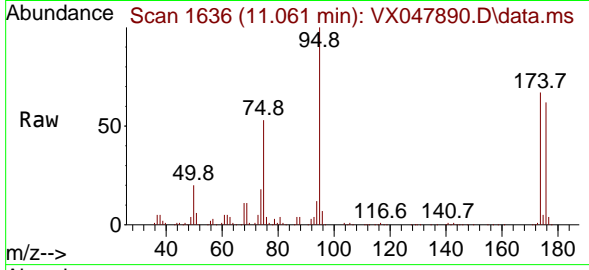




#76
 1,2,3-Trichloropropane
 Concen: 23.607 ug/l
 RT: 11.061 min Scan# 1636
 Delta R.T. -0.159 min
 Lab File: VX047890.D
 Acq: 29 Sep 2025 17:26

Instrument : MSVOA_X
 ClientSampleId : BP-VPB-184-GW-420-422

Tgt Ion: 75 Resp: 67062
 Ion Ratio Lower Upper
 75 100
 77 1.1 18.8 56.4#



#81
 trans-1,4-Dichloro-2-butene
 Concen: 60.201 ug/l
 RT: 11.061 min Scan# 1636
 Delta R.T. 0.061 min
 Lab File: VX047890.D
 Acq: 29 Sep 2025 17:26

Tgt Ion: 75 Resp: 67062
 Ion Ratio Lower Upper
 75 100
 53 0.0 83.4 125.2#
 89 0.0 36.3 54.5#

