

Data Path : Z:\voasrv\HPCHEM1\MSVOA_X\Data\VX092925\
 Data File : VX047888.D
 Acq On : 29 Sep 2025 16:44
 Operator : JC/MD
 Sample : Q3213-05
 Misc : 5.0mL/MSVOA_X/WATER
 ALS Vial : 22 Sample Multiplier: 1

Instrument :
 MSVOA_X
 ClientSampleId :
 BP-VPB-184-GW-380-382

Integration Parameters: RTEINT.P
 Integrator: RTE
 Smoothing : ON Filtering: 5
 Sampling : 1 Min Area: 3 % of largest Peak
 Start Thrs: 0.2 Max Peaks: 100
 Stop Thrs : 0 Peak Location: TOP

If leading or trailing edge < 100 prefer < Baseline drop else tangent >
 Peak separation: 5

Method : Z:\voasrv\HPCHEM1\MSVOA_X\Method\82X091625W.M
 Title : SW846 8260

Signal : TIC: VX047888.D\data.ms

peak #	R.T. min	first scan	max scan	last scan	PK TY	peak height	corr. area	corr. % max.	% of total
1	1.148	8	10	19	rVB2	6586	12110	1.27%	0.234%
2	1.459	58	61	66	rBV	8983	10210	1.07%	0.197%
3	5.379	692	704	720	rBV2	96589	314550	32.95%	6.082%
4	5.544	720	731	754	rVB	131202	417011	43.68%	8.064%
5	5.946	786	797	818	rBV2	111203	327523	34.31%	6.333%
6	6.745	919	928	946	rBV	256927	674622	70.67%	13.045%
7	8.635	1231	1238	1260	rBV	525136	870631	91.20%	16.835%
8	10.037	1462	1468	1485	rBV	642303	916441	96.00%	17.721%
9	11.067	1631	1637	1651	rBV	481629	673849	70.59%	13.030%
10	12.006	1785	1791	1800	rBV	718674	954622	100.00%	18.459%

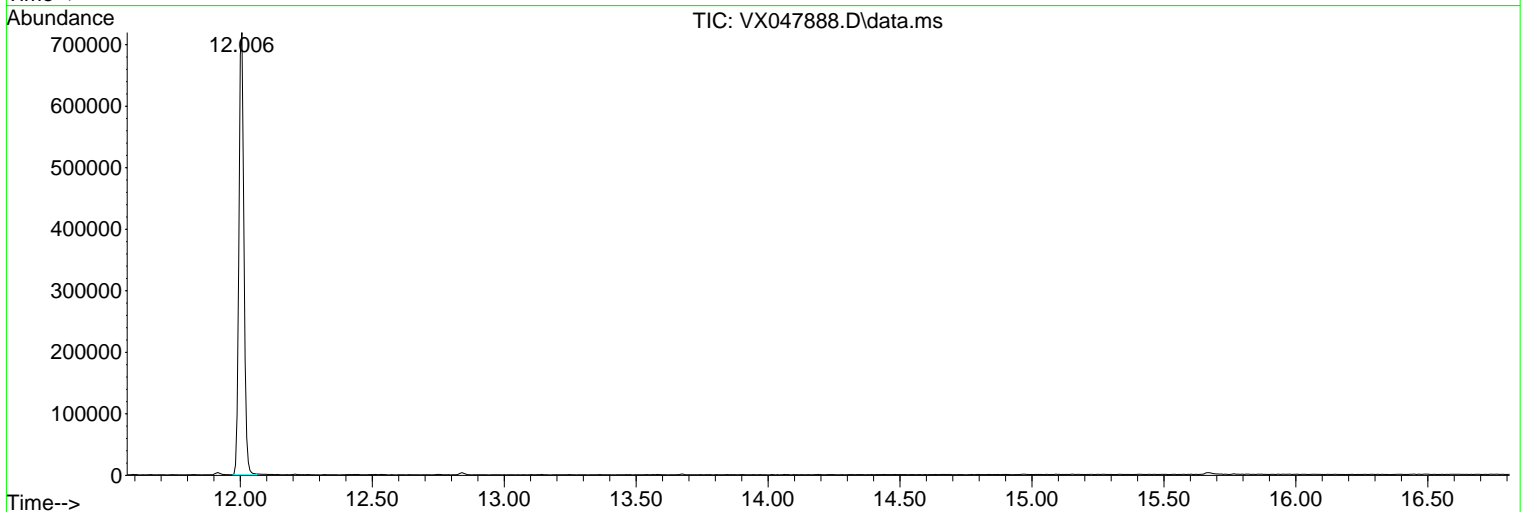
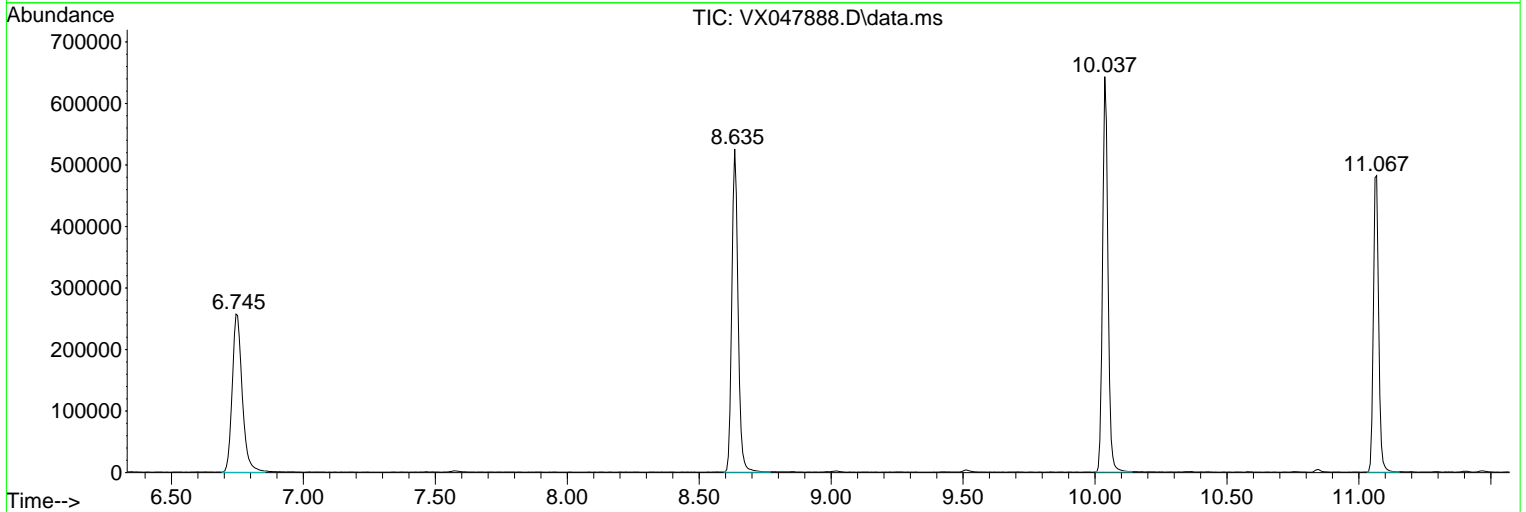
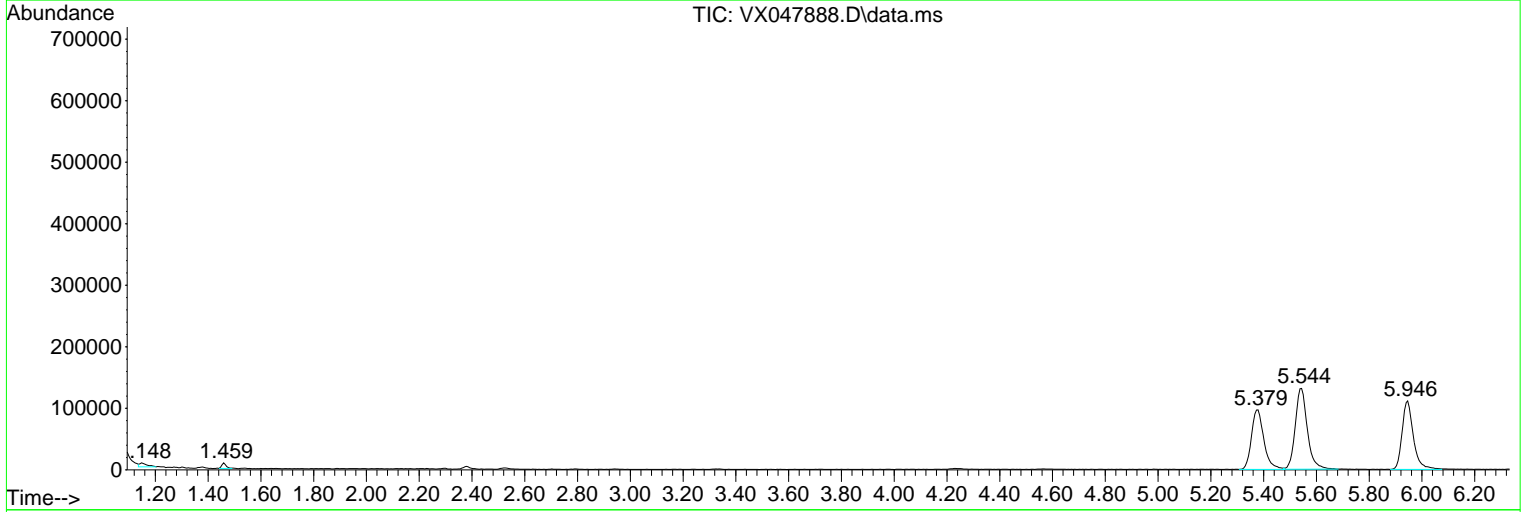
Sum of corrected areas: 5171569

Data Path : Z:\voasrv\HPCHEM1\MSVOA_X\Data\VX092925\
 Data File : VX047888.D
 Acq On : 29 Sep 2025 16:44
 Operator : JC/MD
 Sample : Q3213-05
 Misc : 5.0mL/MSVOA_X/WATER
 ALS Vial : 22 Sample Multiplier: 1

Instrument :
 MSVOA_X
ClientSampleId :
 BP-VPB-184-GW-380-382

Quant Method : Z:\voasrv\HPCHEM1\MSVOA_X\Method\82X091625W.M
 Quant Title : SW846 8260

TIC Library : C:\Database\NIST20.L
 TIC Integration Parameters: LSCINT.P



Library Search Compound Report

Data Path : Z:\voasrv\HPCHEM1\MSVOA_X\Data\VX092925\
Data File : VX047888.D
Acq On : 29 Sep 2025 16:44
Operator : JC/MD
Sample : Q3213-05
Misc : 5.0mL/MSVOA_X/WATER
ALS Vial : 22 Sample Multiplier: 1

Instrument :
MSVOA_X
ClientSampleId :
BP-VPB-184-GW-380-382

Quant Method : Z:\voasrv\HPCHEM1\MSVOA_X\Method\82X091625W.M
Quant Title : SW846 8260

TIC Library : C:\Database\NIST20.L
TIC Integration Parameters: LSCINT.P

No Library Search Compounds Detected

Data Path : Z:\voasrv\HPCHEM1\MSVOA_X\Data\VX092925\
Data File : VX047888.D
Acq On : 29 Sep 2025 16:44
Operator : JC/MD
Sample : Q3213-05
Misc : 5.0mL/MSVOA_X/WATER
ALS Vial : 22 Sample Multiplier: 1

Instrument :
MSVOA_X
ClientSampleId :
BP-VPB-184-GW-380-382

Quant Method : Z:\voasrv\HPCHEM1\MSVOA_X\Method\82X091625W.M
Quant Title : SW846 8260

TIC Library : C:\Database\NIST20.L
TIC Integration Parameters: LSCINT.P

TIC Top Hit name	RT	EstConc	Units	Response	--Internal Standard--			
					#	RT	Resp	Conc
