

Data Path : Z:\VOASRV\HPCHEM1\MSVOA X\DATA\VX093019\  
 Data File : VX012705.D  
 Acq On : 30 Sep 2019 15:09  
 Operator : JC/SP  
 Sample : K5081-11  
 Misc : 5.0mL/MSVOA X/WATER  
 ALS Vial : 12 Sample Multiplier: 1

Instrument :  
 MSVOA\_X  
 ClientSampleId :  
 SA-PZ118S-20190926

Integration Parameters: RTEINT.P

Integrator: RTE  
 Smoothing : ON Filtering: 5  
 Sampling : 1 Min Area: 3 % of largest Peak  
 Start Thrs: 0.2 Max Peaks: 100  
 Stop Thrs : 0 Peak Location: TOP

If leading or trailing edge < 100 prefer < Baseline drop else tangent >  
 Peak separation: 5

Method : Z:\VOASRV\HPCHEM1\MSVOA\_X\METHOD\82X092319W.M  
 Title : SW846 8260

Signal : TIC

peak #	R.T. min	first scan	max scan	last scan	PK TY	peak height	corr. area	corr. % max.	% of total
1	1.070	26	30	43	rBV	368548	464911	50.48%	8.732%
2	1.265	58	62	69	rBV	34878	42869	4.66%	0.805%
3	2.436	247	254	262	rVB	8154	14622	1.59%	0.275%
4	2.594	274	280	294	rVB	64948	117024	12.71%	2.198%
5	3.009	340	348	362	rVB	14581	36397	3.95%	0.684%
6	4.679	608	622	637	rBV2	11279	37416	4.06%	0.703%
7	5.490	743	755	768	rBV	102785	291844	31.69%	5.482%
8	5.649	770	781	796	rBV	187279	529891	57.54%	9.953%
9	6.051	833	847	862	rBV	123337	324260	35.21%	6.091%
10	6.850	968	978	999	rBV	297393	697546	75.75%	13.102%
11	8.709	1276	1283	1295	rBV	583408	920912	100.00%	17.297%
12	10.105	1507	1512	1527	rBV	532337	754086	81.88%	14.164%
13	11.135	1675	1681	1693	rBV	383336	517877	56.24%	9.727%
14	12.074	1829	1835	1844	rBV	462042	574349	62.37%	10.788%

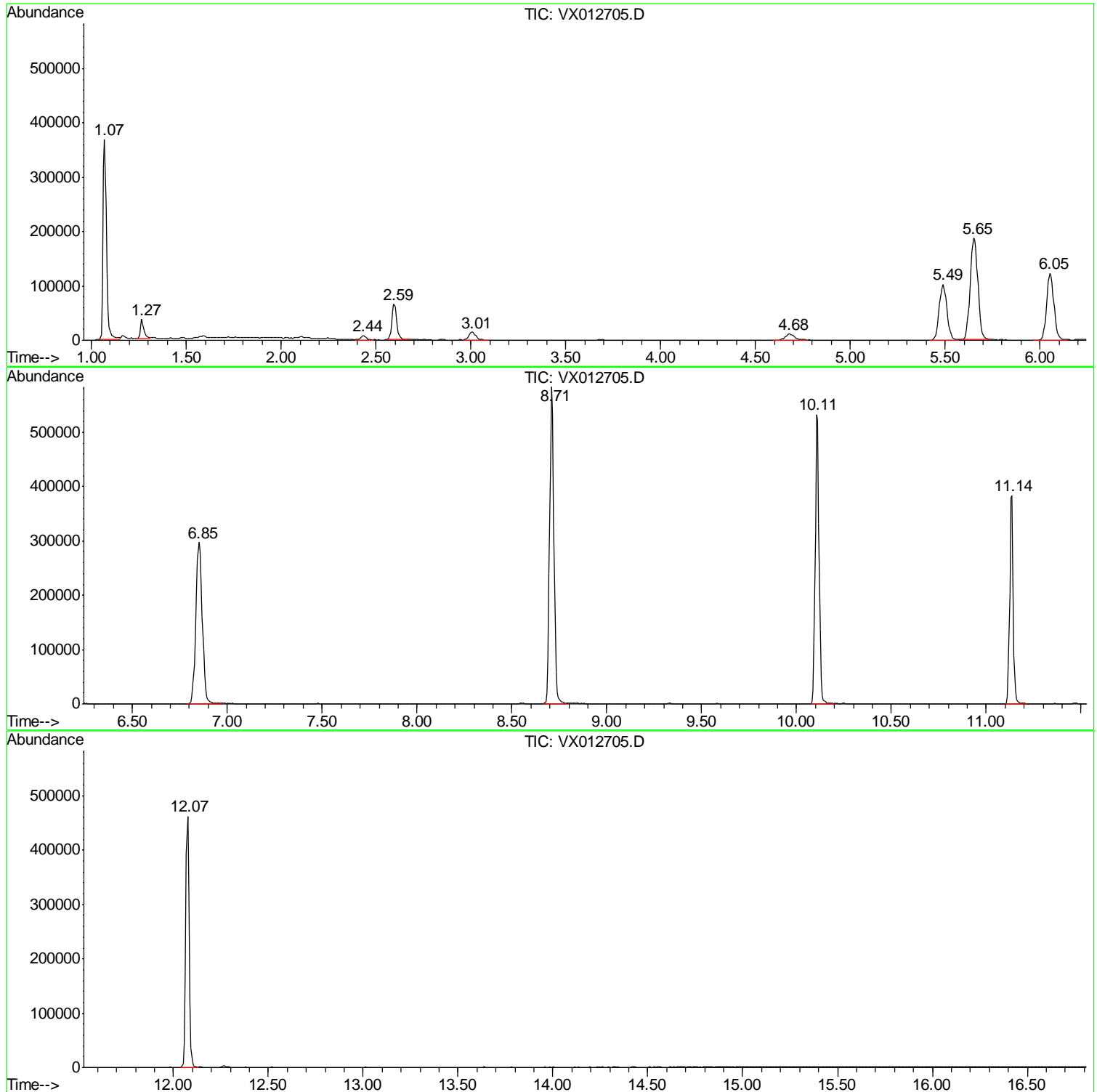
Sum of corrected areas: 5324004

Data Path : Z:\VOASRV\HPCHEM1\MSVOA X\DATA\VX093019\  
Data File : VX012705.D  
Acq On : 30 Sep 2019 15:09  
Operator : JC/SP  
Sample : K5081-11  
Misc : 5.0mL/MSVOA X/WATER  
ALS Vial : 12 Sample Multiplier: 1

Instrument :  
MSVOA\_X  
ClientSampled :  
SA-PZ118S-20190926

Quant Method : Z:\VOASRV\HPCHEM1\MSVOA\_X\METHOD\82X092319W.M  
Quant Title : SW846 8260

TIC Library : C:\DATABASE\NIST11.L  
TIC Integration Parameters: LSCINT.P



Data Path : Z:\VOASRV\HPCHEM1\MSVOA X\DATA\VX093019\  
 Data File : VX012705.D  
 Acq On : 30 Sep 2019 15:09  
 Operator : JC/SP  
 Sample : K5081-11  
 Misc : 5.0mL/MSVOA X/WATER  
 ALS Vial : 12 Sample Multiplier: 1

Instrument :  
 MSVOA\_X  
 ClientSampleID :  
 SA-PZ118S-20190926

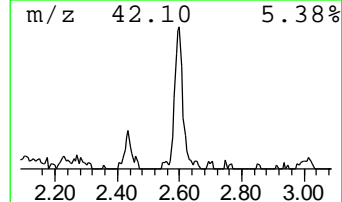
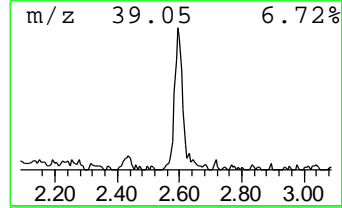
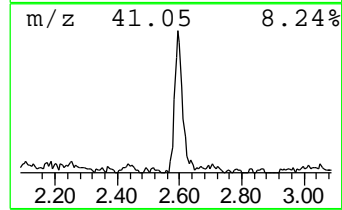
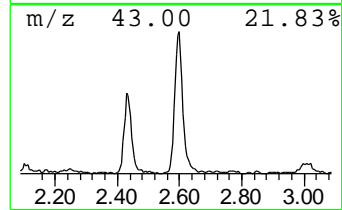
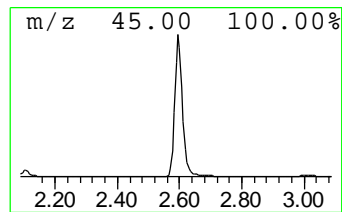
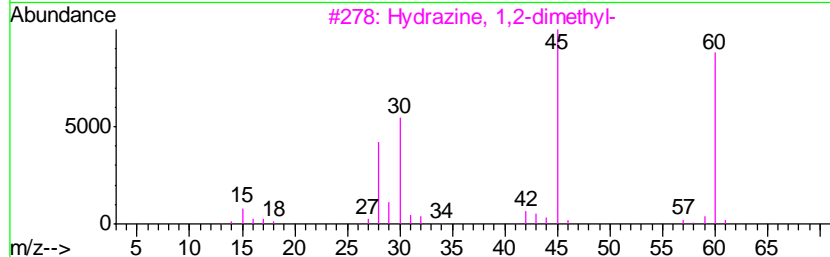
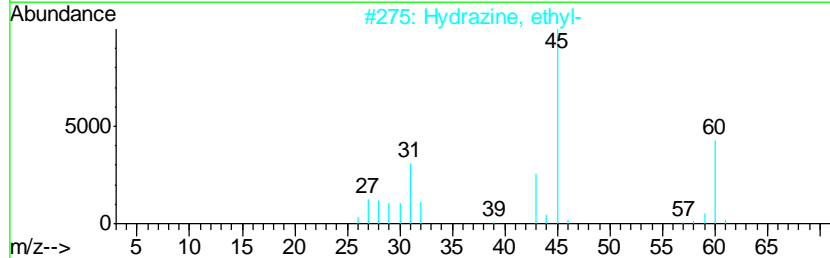
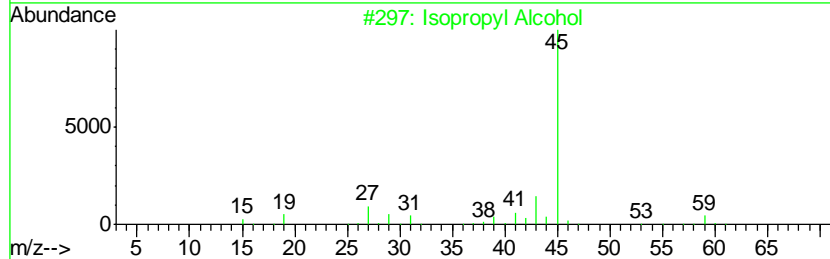
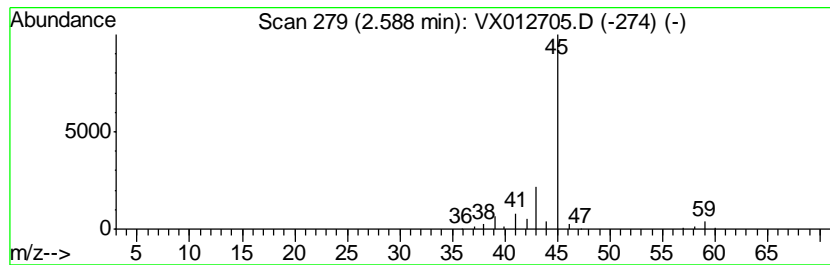
Quant Method : Z:\VOASRV\HPCHEM1\MSVOA\_X\METHOD\82X092319W.M  
 Quant Title : SW846 8260

TIC Library : C:\DATABASE\NIST11.L  
 TIC Integration Parameters: LSCINT.P

\*\*\*\*\*  
 Peak Number 2 Isopropyl Alcohol Concentration Rank 2

R.T.	EstConc	Area	Relative to ISTD	R.T.
2.59	11.04 ug/l	117024	Pentafluorobenzene	5.65

Hit#	of	Tentative ID	MW	MolForm	CAS#	Qual
1	5	Isopropyl Alcohol	60	C3H8O	000067-63-0	78
2		Hydrazine, ethyl-	60	C2H8N2	000624-80-6	40
3		Hydrazine, 1,2-dimethyl-	60	C2H8N2	000540-73-8	9
4		Formamide	45	CH3NO	000075-12-7	5
5		Oxirane, (methoxymethyl)-	88	C4H8O2	000930-37-0	4



Data Path : Z:\VOASRV\HPCHEM1\MSVOA\_X\DATA\VX093019\  
Data File : VX012705.D  
Acq On : 30 Sep 2019 15:09  
Operator : JC/SP  
Sample : K5081-11  
Misc : 5.0mL/MSVOA\_X/WATER  
ALS Vial : 12 Sample Multiplier: 1

Instrument :  
MSVOA\_X  
ClientSampleId :  
SA-PZ118S-20190926

Quant Method : Z:\VOASRV\HPCHEM1\MSVOA\_X\METHOD\82X092319W.M  
Quant Title : SW846 8260

TIC Library : C:\DATABASE\NIST11.L  
TIC Integration Parameters: LSCINT.P

TIC Top Hit name	RT	EstConc	Units	Response	--Internal Standard--			
					#	RT	Resp	Conc
Isopropyl Alcohol	2.59	11.0	ug/l	117024	1	5.65	529891	50.0