

Data Path : Z:\VOASRV\HPCHEM1\MSVOA X\DATA\VX100118\
 Data File : VX004875.D
 Acq On : 01 Oct 2018 17:15
 Operator : JC/MD
 Sample : J5135-15
 Misc : 5.0mL/MSVOA X/WATER
 ALS Vial : 18 Sample Multiplier: 1

Instrument :
 MSVOA_X
 ClientSampleId :
 SA-TW509-4246

Quant Time: Oct 02 02:41:14 2018
 Quant Method : Z:\VOASRV\HPCHEM1\MSVOA_X\METHOD\82X092618W.M
 Quant Title : SW846 8260
 QLast Update : Wed Sep 26 14:17:02 2018
 Response via : Initial Calibration

Internal Standards	R.T.	QIon	Response	Conc	Units	Dev(Min)
1) Pentafluorobenzene	5.67	168	210514	50.00	ug/l	0.00
34) 1,4-Difluorobenzene	6.86	114	348199	50.00	ug/l	0.00
63) Chlorobenzene-d5	10.12	117	339861	50.00	ug/l	0.00
72) 1,4-Dichlorobenzene-d4	12.08	152	183420	50.00	ug/l	0.00

System Monitoring Compounds

33) 1,2-Dichloroethane-d4	6.07	65	166579	55.39	ug/l	0.00
Spiked Amount	50.000		Recovery	=	110.78%	
35) Dibromofluoromethane	5.50	113	141437	47.93	ug/l	0.00
Spiked Amount	50.000		Recovery	=	95.86%	
50) Toluene-d8	8.72	98	509988	51.98	ug/l	0.00
Spiked Amount	50.000		Recovery	=	103.96%	
62) 4-Bromofluorobenzene	11.14	95	177738	50.29	ug/l	0.00
Spiked Amount	50.000		Recovery	=	100.58%	

Target Compounds

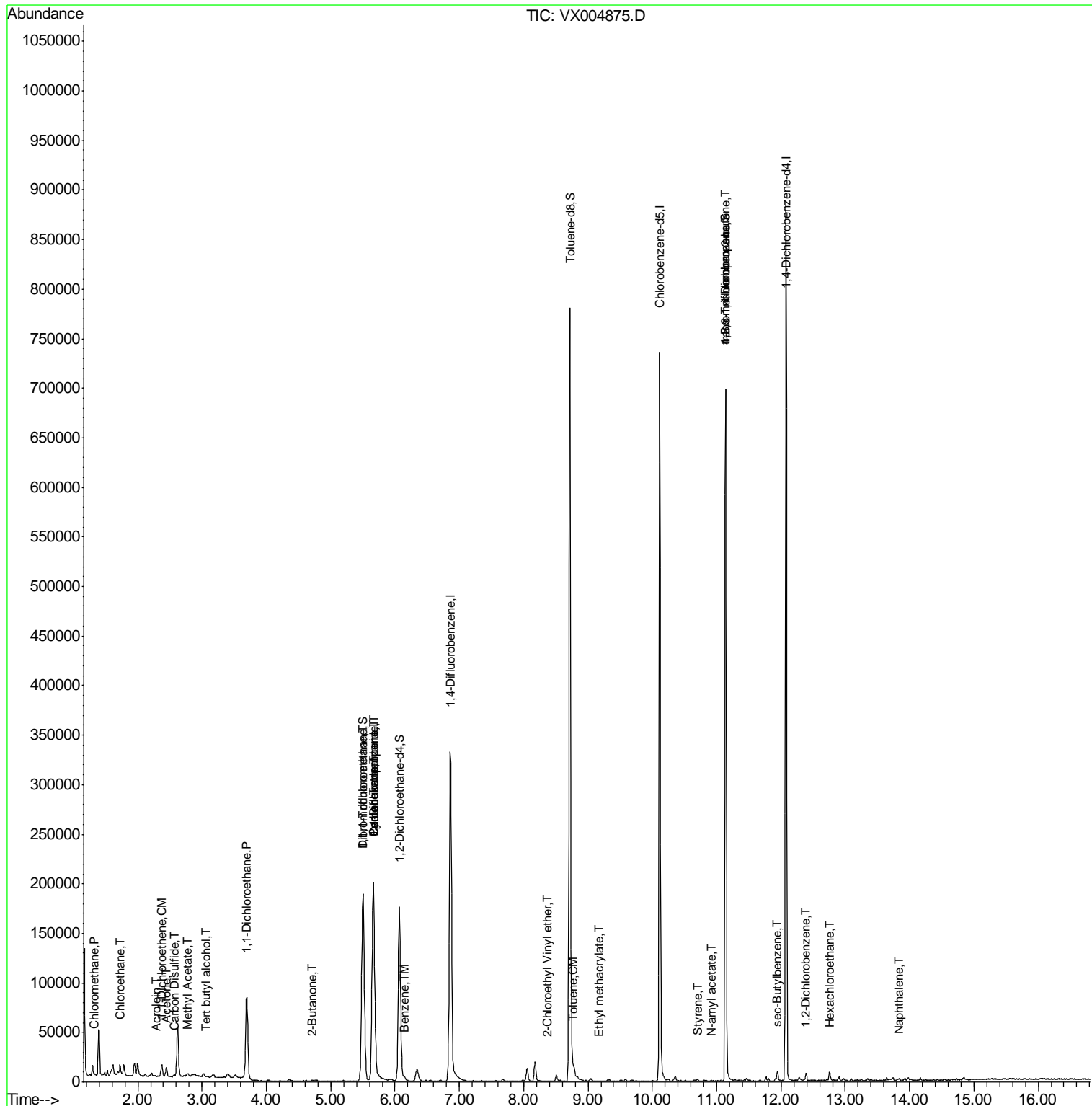
	R.T.	QIon	Response	Conc	Units	Qvalue
3) Chloromethane	1.32	50	1072	0.308	ug/l	92
6) Chloroethane	1.72	64	10180	3.557	ug/l	98
11) Tert butyl alcohol	3.07	59	962	1.144	ug/l #	68
12) 1,1-Dichloroethene	2.37	96	3937	1.726	ug/l #	78
13) Acrolein	2.29	56	139	0.232	ug/l #	16
16) Acetone	2.45	43	9777	5.569	ug/l	96
17) Carbon Disulfide	2.57	76	1910	0.279	ug/l #	93
18) Methyl Acetate	2.77	43	1015	0.228	ug/l #	84
20) Methylene Chloride	2.86	84	756	Below Cal	#	85
24) 1,1-Dichloroethane	3.70	63	95665	19.136	ug/l	99
25) 2-Butanone	4.71	43	1612	0.623	ug/l #	86
31) Cyclohexane	5.66	56	4855	1.269	ug/l #	1
32) 1,1,1-Trichloroethane	5.49	97	23807	6.170	ug/l	98
36) 1,1-Dichloropropene	5.66	75	14545	3.612	ug/l #	50
38) Carbon Tetrachloride	5.67	117	19014	4.493	ug/l #	16
40) Benzene	6.15	78	3837	0.304	ug/l	92
52) Toluene	8.78	92	1523	0.220	ug/l	91
56) Ethyl methacrylate	9.16	69	20	2.866	ug/l #	1
58) 2-Chloroethyl Vinyl ether	8.37	63	23	14.250	ug/l #	45
70) Styrene	10.71	104	68	2.147	ug/l #	9
74) N-amyl acetate	10.91	43	269	1.789	ug/l #	55
76) 1,2,3-Trichloropropane	11.14	75	88726	21.582	ug/l #	37
80) 1,3,5-Trimethylbenzene	11.51	105	283	Below Cal		87
81) trans-1,4-Dichloro-2-buten	11.14	75	88726	58.510	ug/l #	10
84) 1,2,4-Trimethylbenzene	11.80	105	961	Below Cal		93
85) sec-Butylbenzene	11.94	105	4715	0.407	ug/l	89
90) Hexachloroethane	12.76	117	3075	1.758	ug/l #	3
91) 1,2-Dichlorobenzene	12.39	146	2115	0.323	ug/l	90
95) Naphthalene	13.83	128	1258	0.801	ug/l #	95

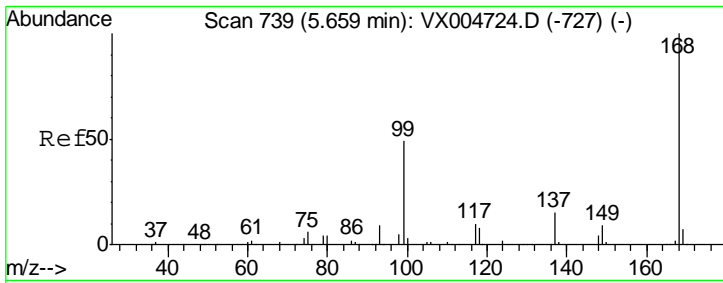
(#) = qualifier out of range (m) = manual integration (+) = signals summed

Data Path : Z:\VOASRV\HPCHEM1\MSVOA X\DATA\VX100118\
 Data File : VX004875.D
 Acq On : 01 Oct 2018 17:15
 Operator : JC/MD
 Sample : J5135-15
 Misc : 5.0mL/MSVOA X/WATER
 ALS Vial : 18 Sample Multiplier: 1

Instrument :
 MSVOA_X
 Client Sampled :
 SA-TW509-4246

Quant Time: Oct 02 02:41:14 2018
 Quant Method : Z:\VOASRV\HPCHEM1\MSVOA_X\METHOD\82X092618W.M
 Quant Title : SW846 8260
 QLast Update : Wed Sep 26 14:17:02 2018
 Response via : Initial Calibration

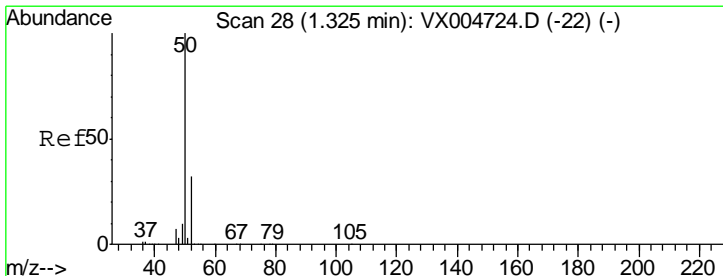
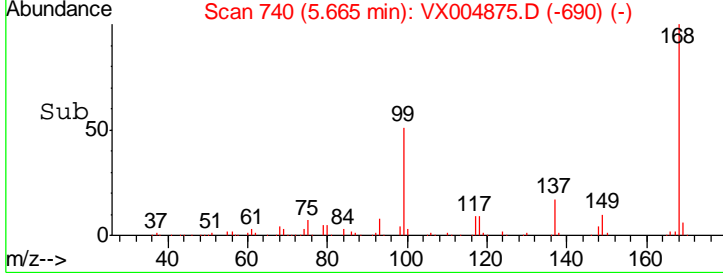
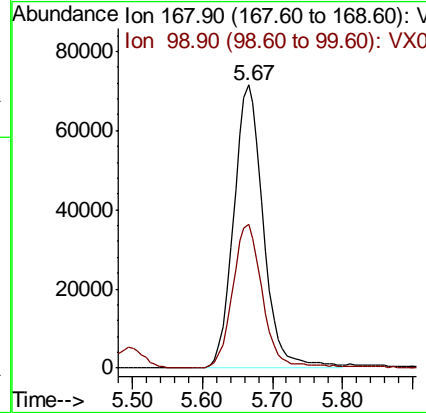
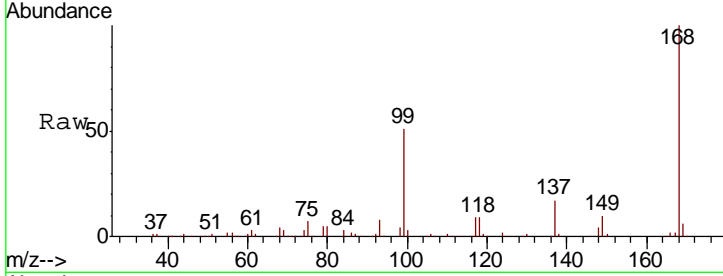




#1
 Pentafluorobenzene
 Concen: 50.000 ug/l
 RT: 5.67 min Scan# 740
 Delta R.T. 0.01 min
 Lab File: VX004875.D
 Acq: 01 Oct 2018 17:15

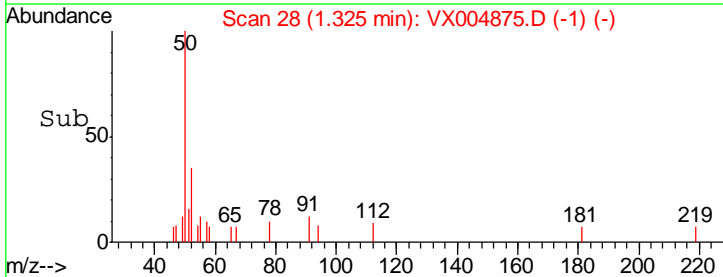
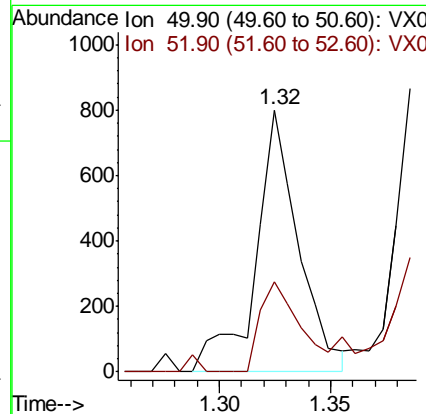
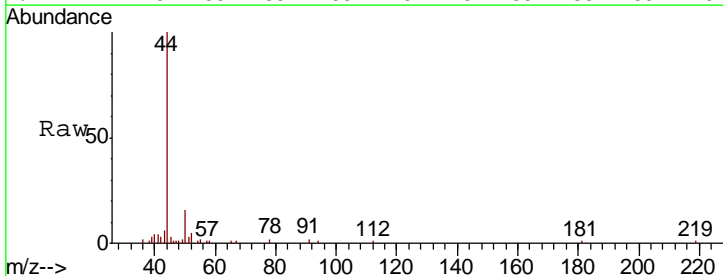
Instrument : MSVOA_X
 ClientSampled : SA-TW509-4246

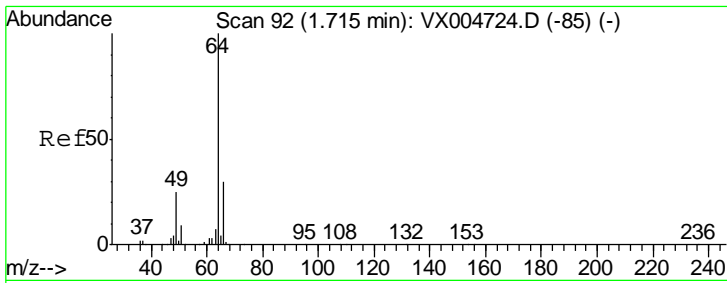
Tgt Ion	Resp	Lower	Upper
168	100		
99	50.8	39.9	59.9



#3
 Chloromethane
 Concen: 0.308 ug/l
 RT: 1.32 min Scan# 28
 Delta R.T. 0.00 min
 Lab File: VX004875.D
 Acq: 01 Oct 2018 17:15

Tgt Ion	Resp	Lower	Upper
50	100		
52	28.1	26.2	39.2

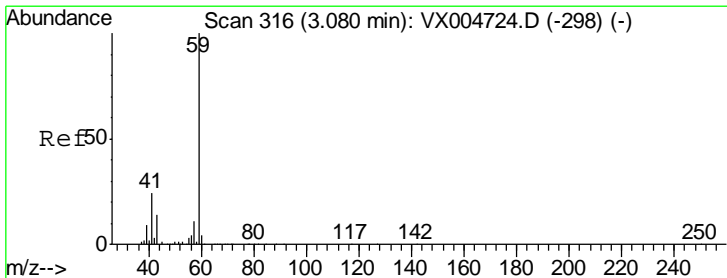
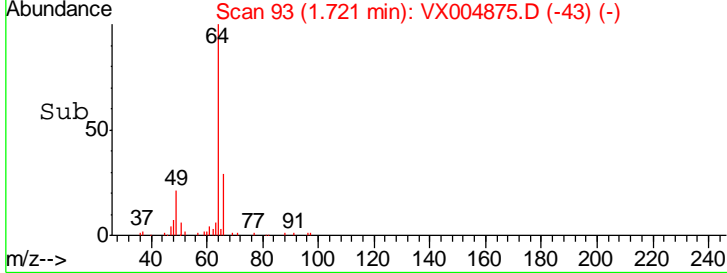
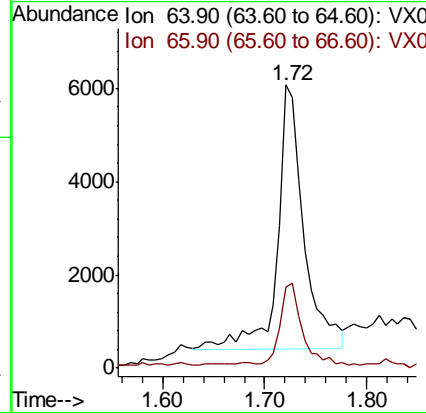
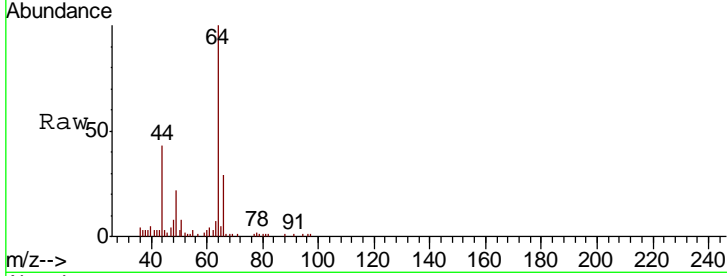




#6
 Chloroethane
 Concen: 3.557 ug/l
 RT: 1.72 min Scan# 93
 Delta R.T. 0.01 min
 Lab File: VX004875.D
 Acq: 01 Oct 2018 17:15

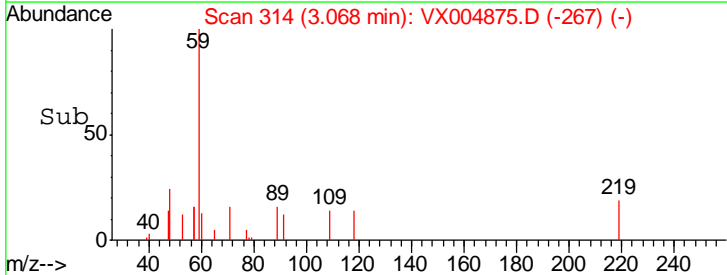
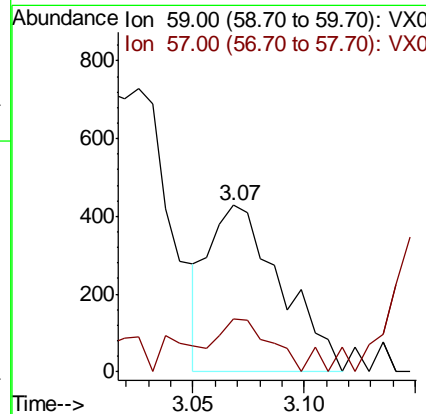
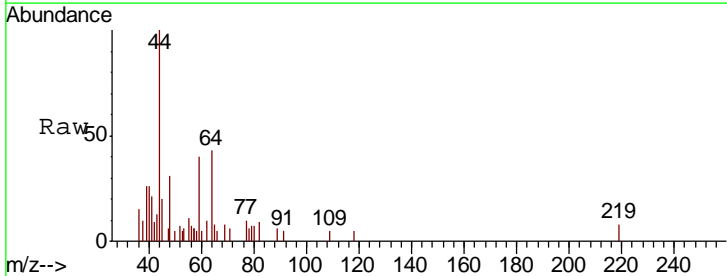
Instrument :
 MSVOA_X
ClientSampled :
 SA-TW509-4246

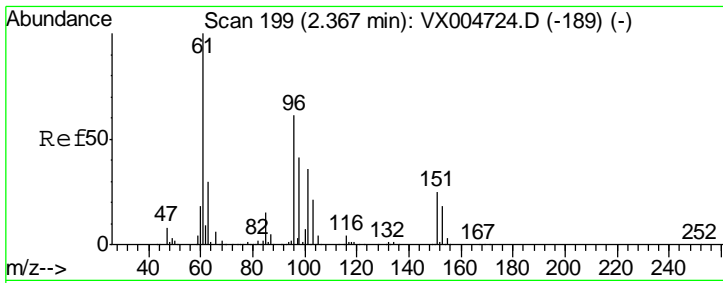
Tgt Ion	Resp	Lower	Upper
64	10180		
66	29.4	24.6	36.8



#11
 Tert butyl alcohol
 Concen: 1.144 ug/l
 RT: 3.07 min Scan# 314
 Delta R.T. -0.01 min
 Lab File: VX004875.D
 Acq: 01 Oct 2018 17:15

Tgt Ion	Resp	Lower	Upper
59	962		
57	22.1	8.2	12.4#

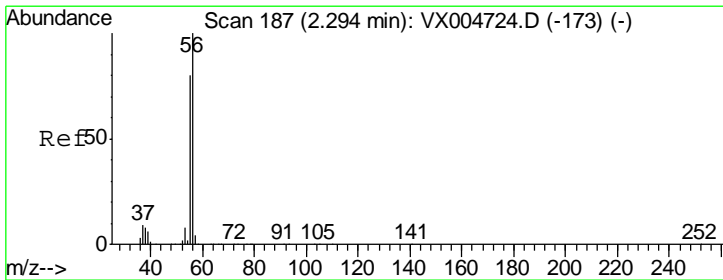
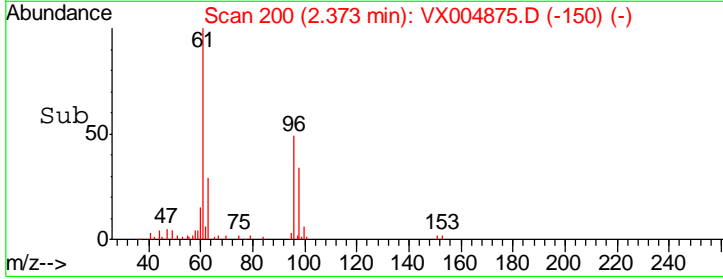
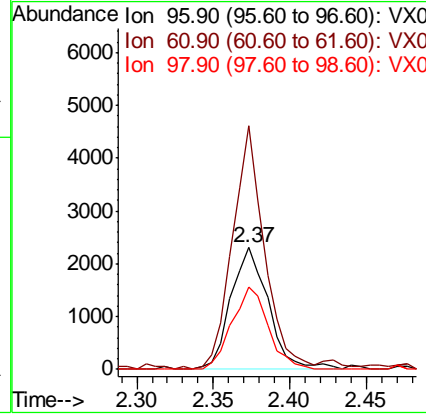
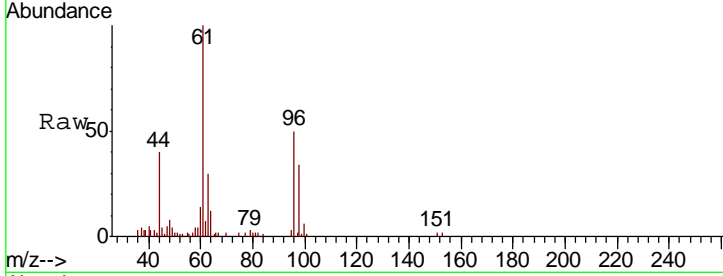




#12
 1,1-Dichloroethene
 Concen: 1.726 ug/l
 RT: 2.37 min Scan# 200
 Delta R.T. 0.01 min
 Lab File: VX004875.D
 Acq: 01 Oct 2018 17:15

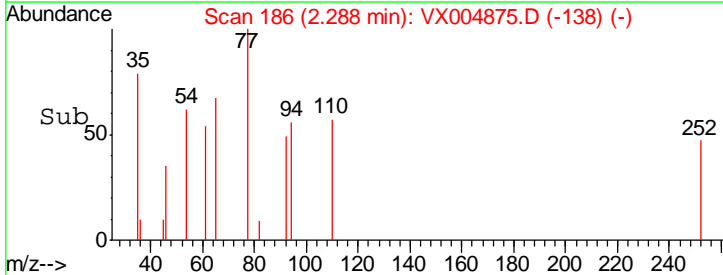
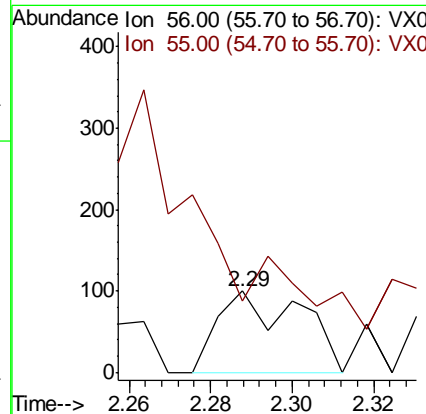
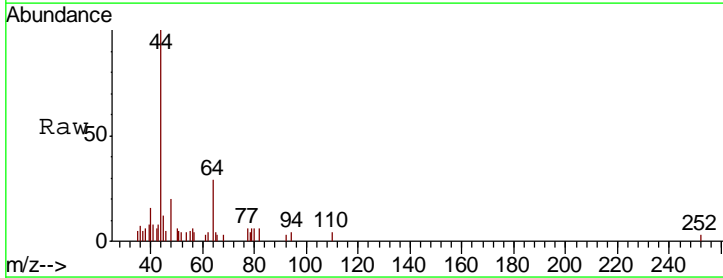
Instrument :
 MSVOA_X
 ClientSampleId :
 SA-TW509-4246

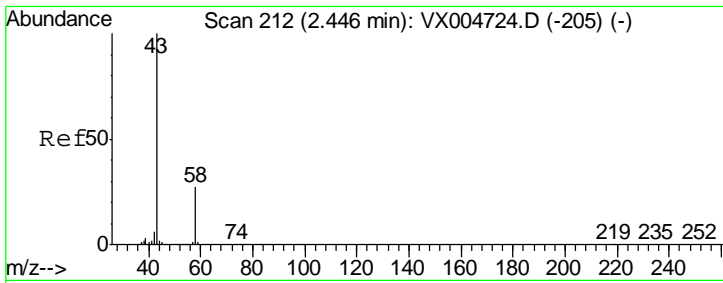
Tgt Ion	Resp	Lower	Upper
96	3937		
Ion Ratio			
96	100		
61	200.2	128.8	193.2#
98	67.9	52.2	78.2



#13
 Acrolein
 Concen: 0.232 ug/l
 RT: 2.29 min Scan# 186
 Delta R.T. -0.01 min
 Lab File: VX004875.D
 Acq: 01 Oct 2018 17:15

Tgt Ion	Resp	Lower	Upper
56	139		
Ion Ratio			
56	100		
55	0.0	54.7	82.1#

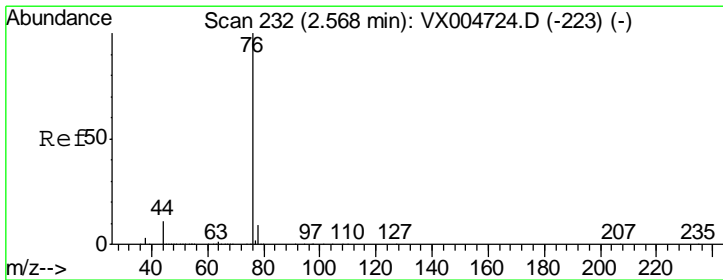
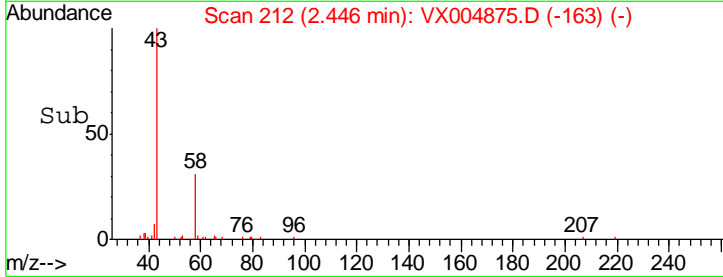
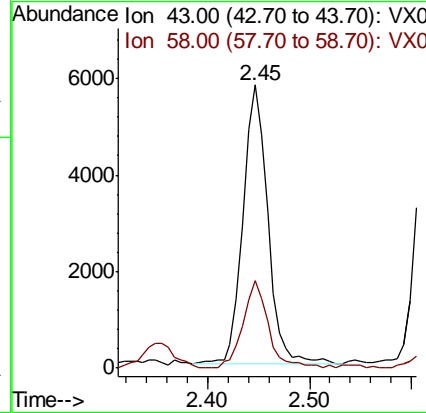
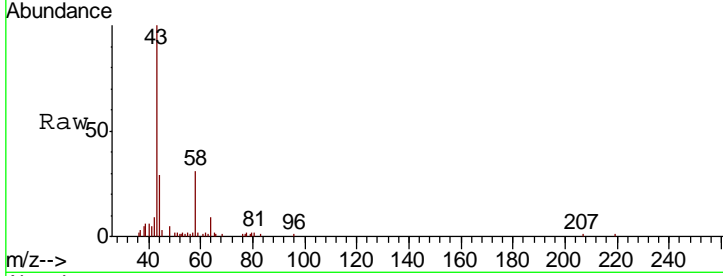




#16
 Acetone
 Concen: 5.569 ug/l
 RT: 2.45 min Scan# 212
 Delta R.T. 0.00 min
 Lab File: VX004875.D
 Acq: 01 Oct 2018 17:15

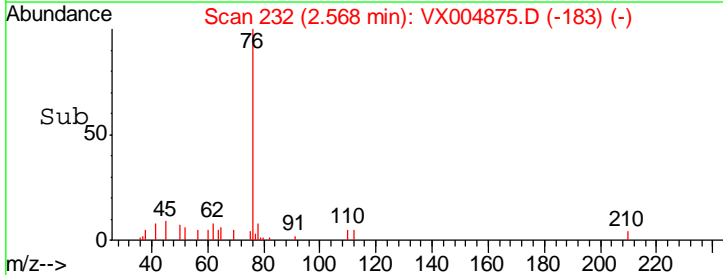
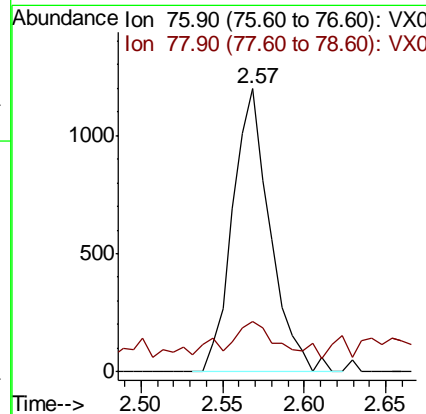
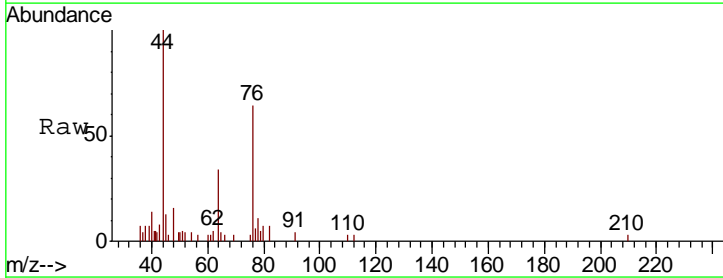
Instrument : MSVOA_X
 ClientSampled : SA-TW509-4246

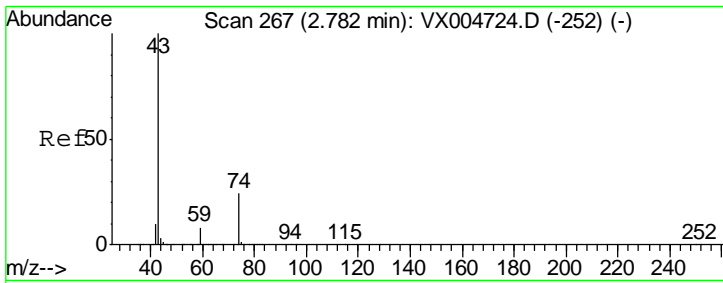
Tgt Ion	Resp	Lower	Upper
43	9777		
58	30.3	26.2	39.4



#17
 Carbon Disulfide
 Concen: 0.279 ug/l
 RT: 2.57 min Scan# 232
 Delta R.T. 0.00 min
 Lab File: VX004875.D
 Acq: 01 Oct 2018 17:15

Tgt Ion	Resp	Lower	Upper
76	1910		
78	11.4	7.0	10.6#

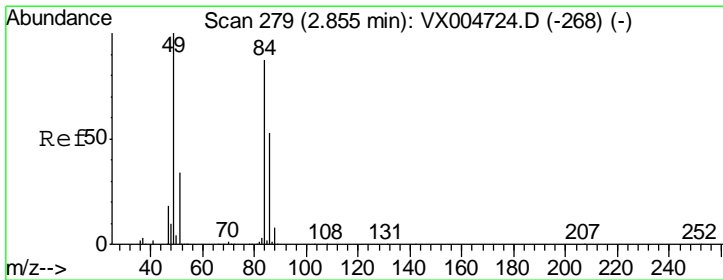
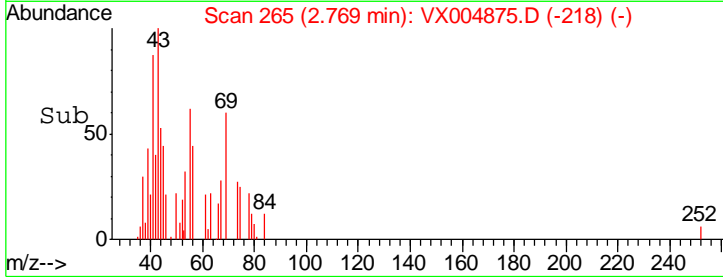
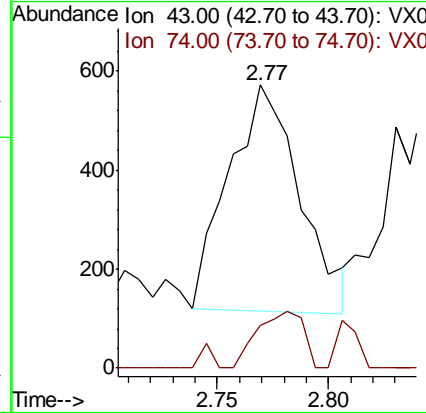
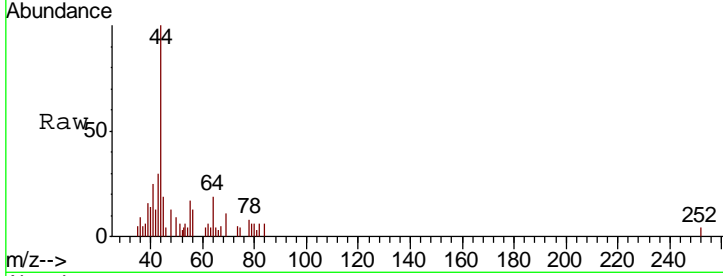




#18
 Methyl Acetate
 Concen: 0.228 ug/l
 RT: 2.77 min Scan# 265
 Delta R.T. -0.01 min
 Lab File: VX004875.D
 Acq: 01 Oct 2018 17:15

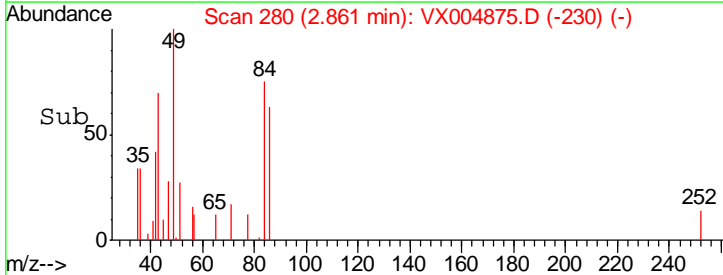
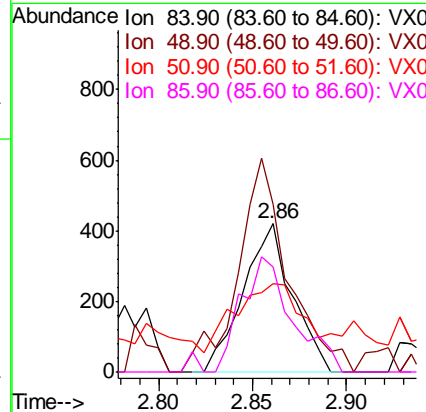
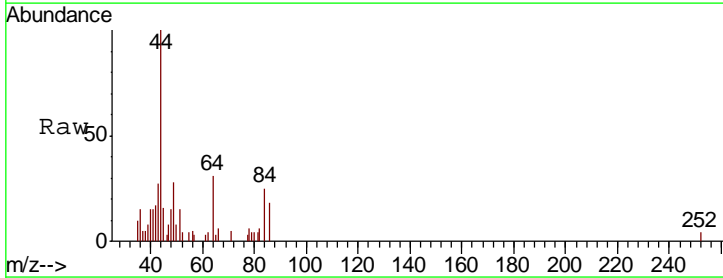
Instrument :
 MSVOA_X
 ClientSampleID :
 SA-TW509-4246

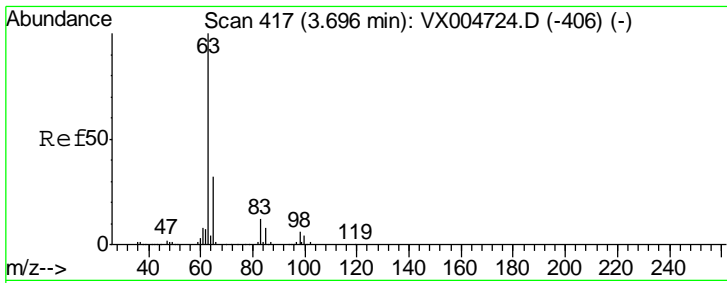
Tgt Ion: 43 Resp: 1015
 Ion Ratio Lower Upper
 43 100
 74 16.4 19.4 29.2#



#20
 Methylene Chloride
 Concen: Below Cal
 RT: 2.86 min Scan# 280
 Delta R.T. 0.01 min
 Lab File: VX004875.D
 Acq: 01 Oct 2018 17:15

Tgt Ion: 84 Resp: 756
 Ion Ratio Lower Upper
 84 100
 49 100.0 101.2 151.8#
 51 38.8 29.5 44.3
 86 71.0 52.3 78.5

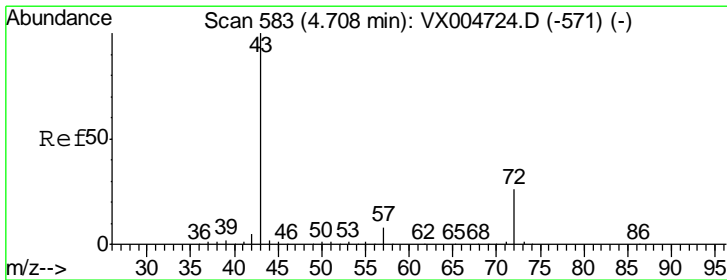
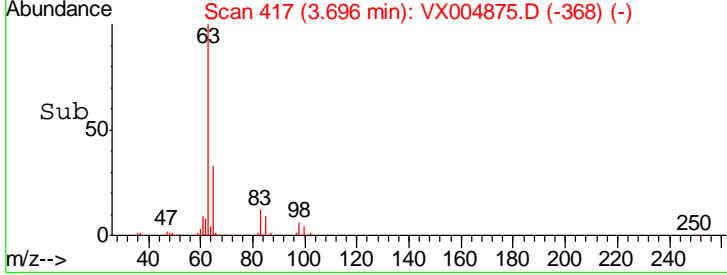
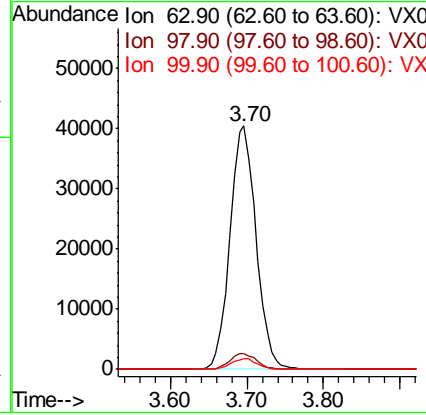
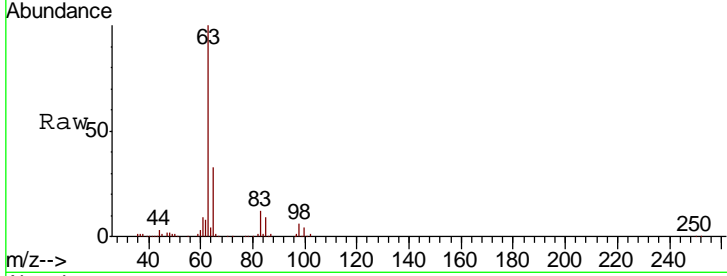




#24
 1,1-Dichloroethane
 Concen: 19.136 ug/l
 RT: 3.70 min Scan# 417
 Delta R.T. 0.00 min
 Lab File: VX004875.D
 Acq: 01 Oct 2018 17:15

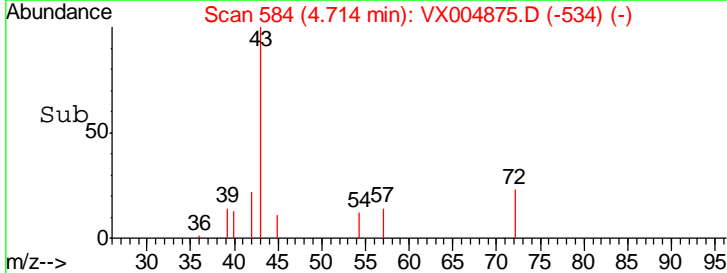
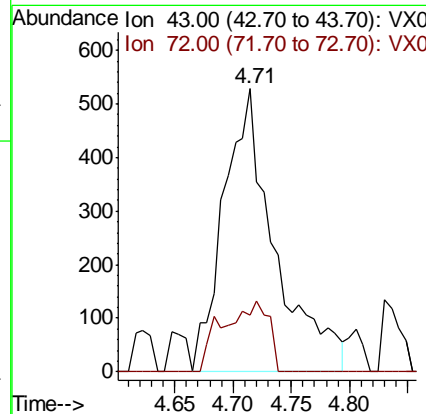
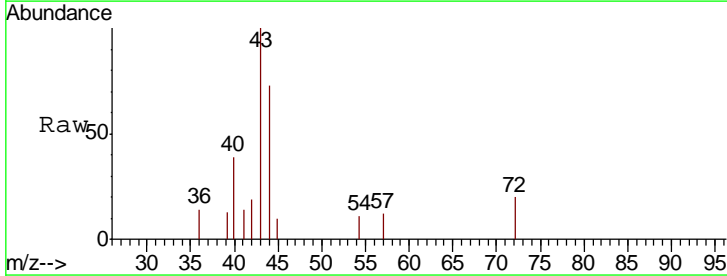
Instrument : MSVOA_X
 ClientSampled : SA-TW509-4246

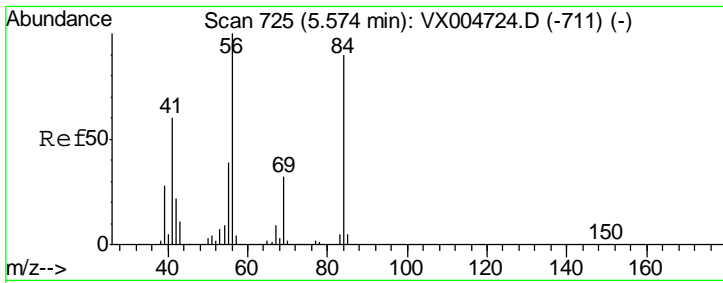
Tgt Ion	Resp	Lower	Upper
63	100		
98	6.4	3.5	10.4
100	4.4	2.4	7.1



#25
 2-Butanone
 Concen: 0.623 ug/l
 RT: 4.71 min Scan# 584
 Delta R.T. 0.01 min
 Lab File: VX004875.D
 Acq: 01 Oct 2018 17:15

Tgt Ion	Resp	Lower	Upper
43	100		
72	20.1	22.0	33.0#

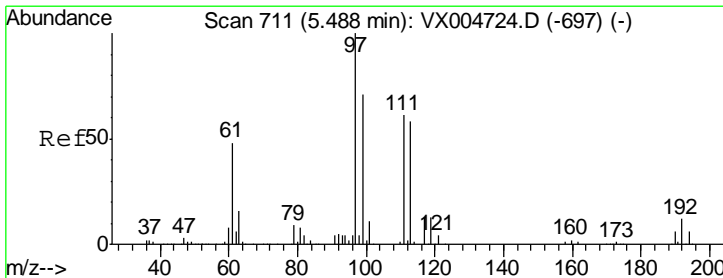
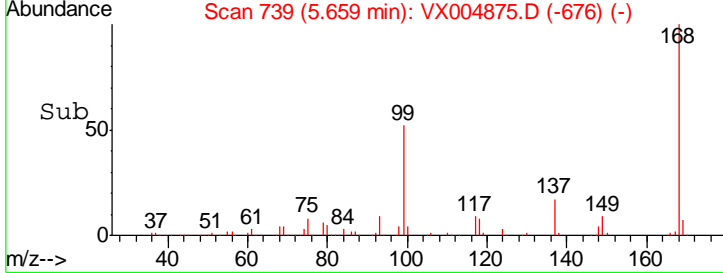
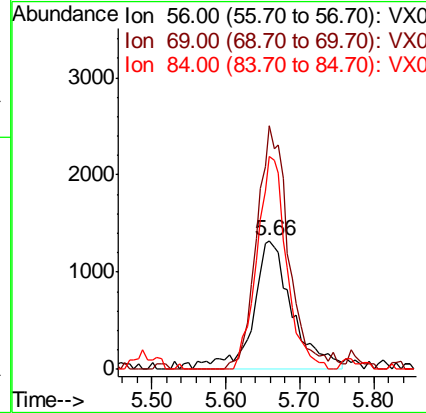
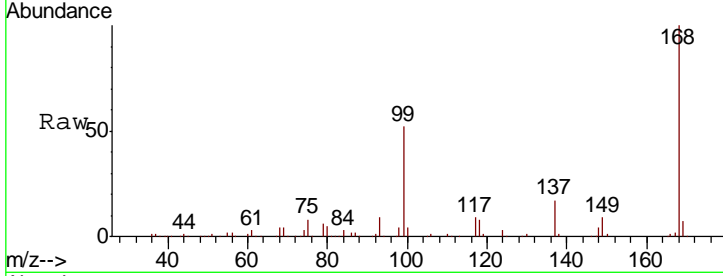




#31
 Cyclohexane
 Concen: 1.269 ug/l
 RT: 5.66 min Scan# 739
 Delta R.T. 0.09 min
 Lab File: VX004875.D
 Acq: 01 Oct 2018 17:15

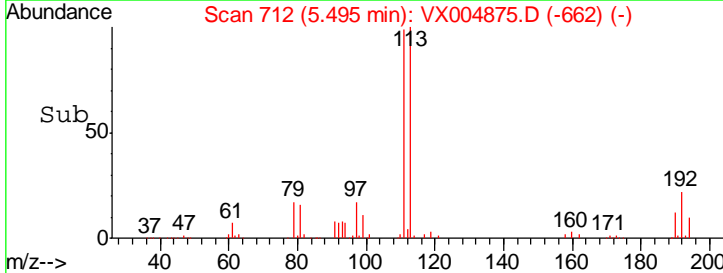
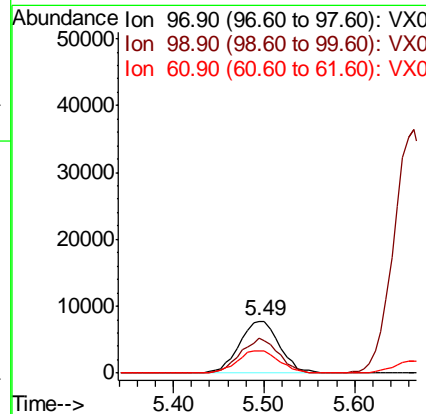
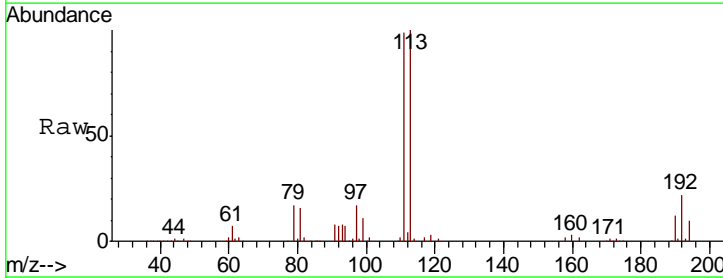
Instrument :
 MSVOA_X
 ClientSampled :
 SA-TW509-4246

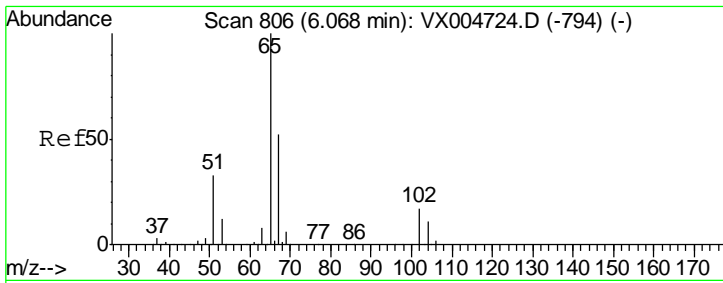
Tgt Ion	Resp	Lower	Upper
56	4855		
69	189.2	25.4	38.2#
84	165.9	71.4	107.2#



#32
 1,1,1-Trichloroethane
 Concen: 6.170 ug/l
 RT: 5.49 min Scan# 712
 Delta R.T. 0.01 min
 Lab File: VX004875.D
 Acq: 01 Oct 2018 17:15

Tgt Ion	Resp	Lower	Upper
97	23807		
99	63.7	52.0	78.0
61	44.5	34.9	52.3

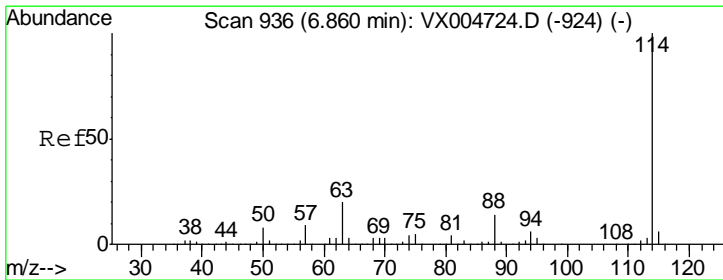
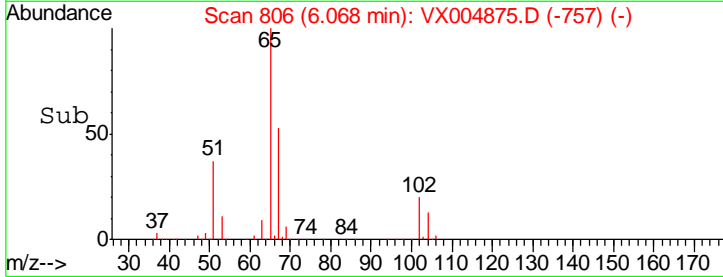
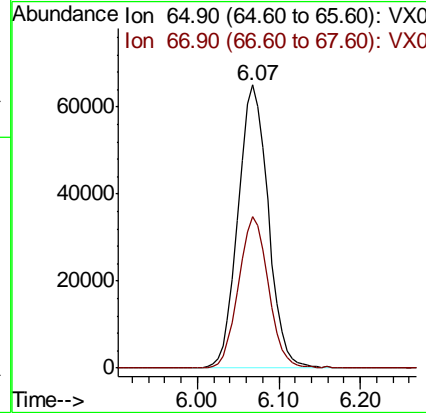
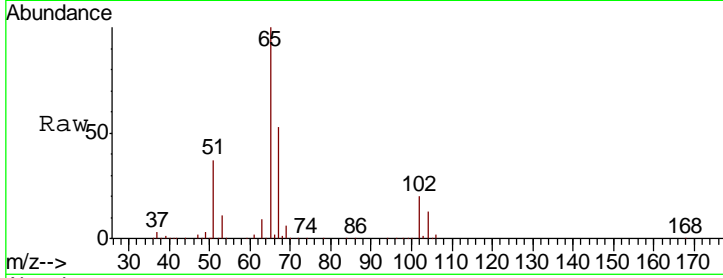




#33
 1,2-Dichloroethane-d4
 Concen: 55.393 ug/l
 RT: 6.07 min Scan# 806
 Delta R.T. 0.00 min
 Lab File: VX004875.D
 Acq: 01 Oct 2018 17:15

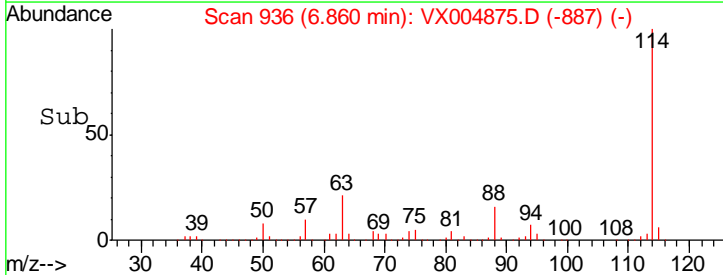
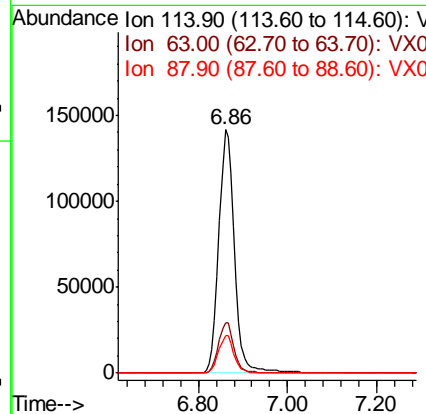
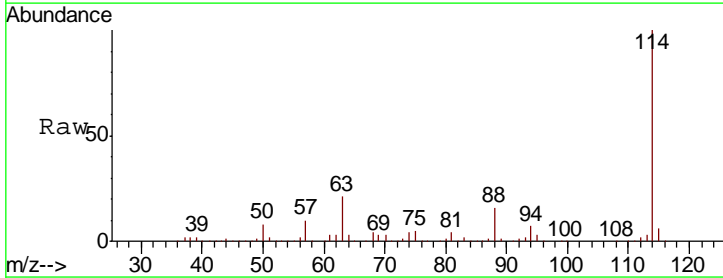
Instrument :
 MSVOA_X
 ClientSampled :
 SA-TW509-4246

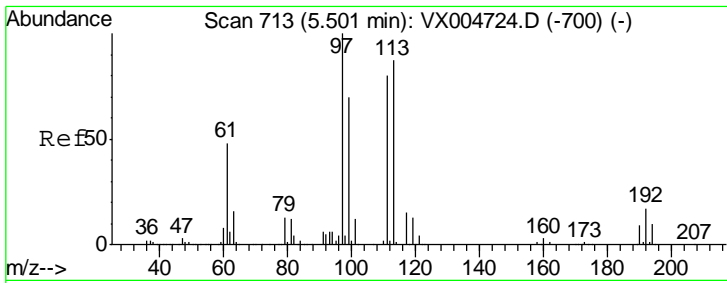
Tgt Ion	Resp	Lower	Upper
65	166579		
67	53.1	0.0	106.8



#34
 1,4-Difluorobenzene
 Concen: 50.000 ug/l
 RT: 6.86 min Scan# 936
 Delta R.T. 0.00 min
 Lab File: VX004875.D
 Acq: 01 Oct 2018 17:15

Tgt Ion	Resp	Lower	Upper
114	348199		
63	20.8	0.0	39.0
88	15.7	0.0	30.4

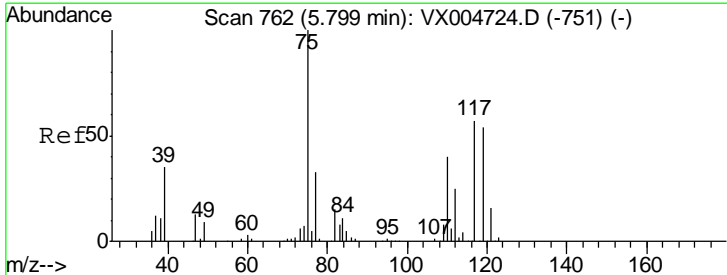
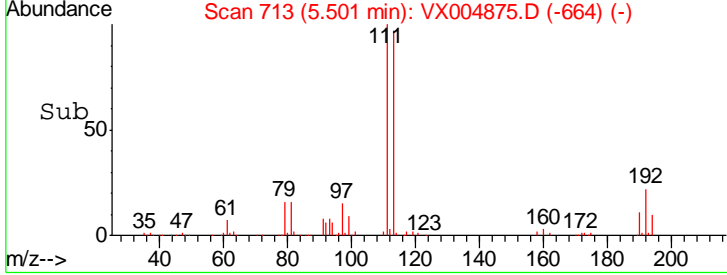
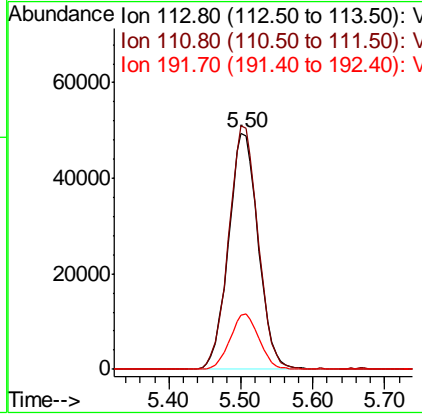
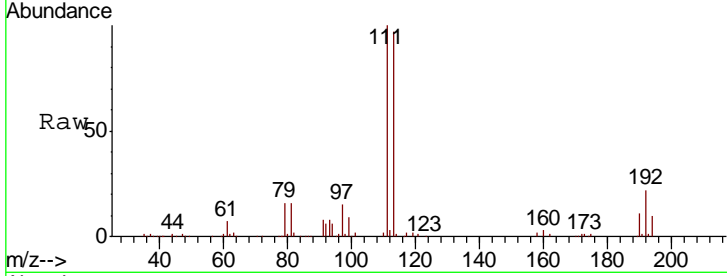




#35
 Dibromofluoromethane
 Concen: 47.928 ug/l
 RT: 5.50 min Scan# 713
 Delta R.T. 0.00 min
 Lab File: VX004875.D
 Acq: 01 Oct 2018 17:15

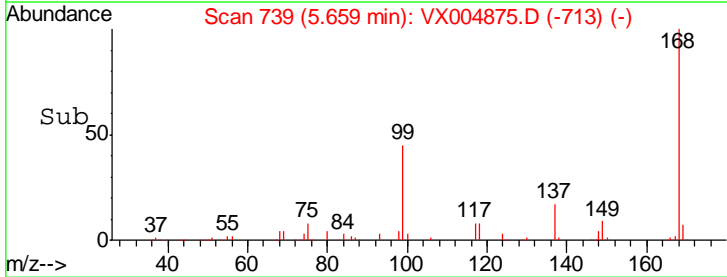
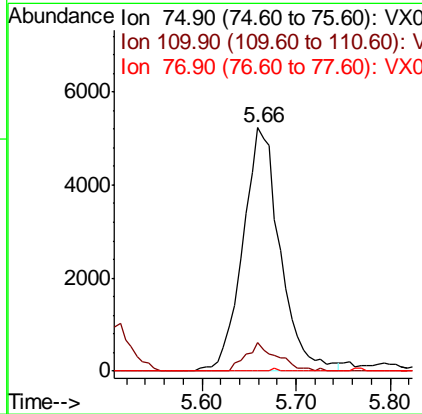
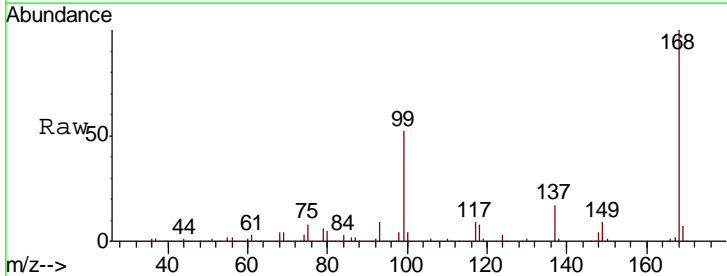
Instrument :
 MSVOA_X
ClientSampled :
 SA-TW509-4246

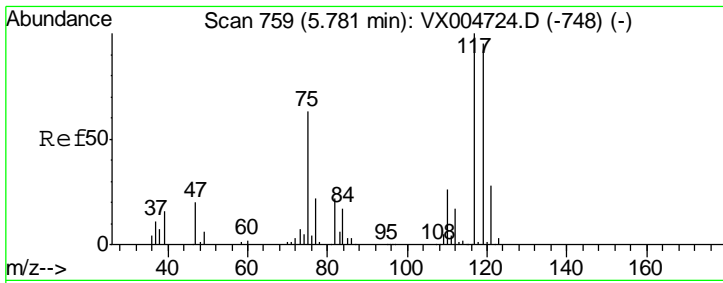
Tgt Ion	Resp	Lower	Upper
113	141437		
113	100		
111	101.8	82.4	123.6
192	23.0	19.4	29.2



#36
 1,1-Dichloropropene
 Concen: 3.612 ug/l
 RT: 5.66 min Scan# 739
 Delta R.T. -0.14 min
 Lab File: VX004875.D
 Acq: 01 Oct 2018 17:15

Tgt Ion	Resp	Lower	Upper
75	14545		
75	100		
110	9.8	18.0	54.0#
77	0.1	24.6	36.8#

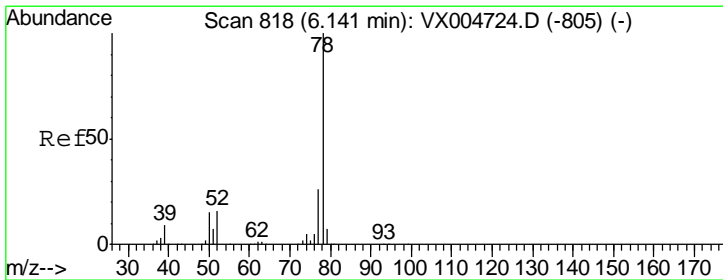
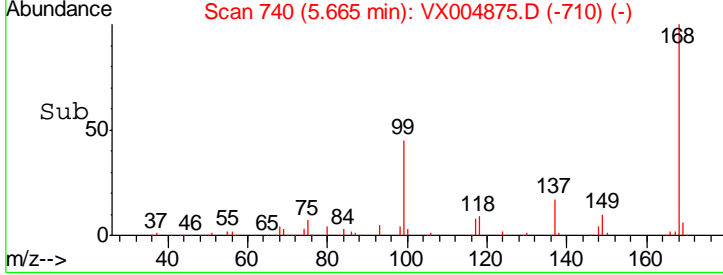
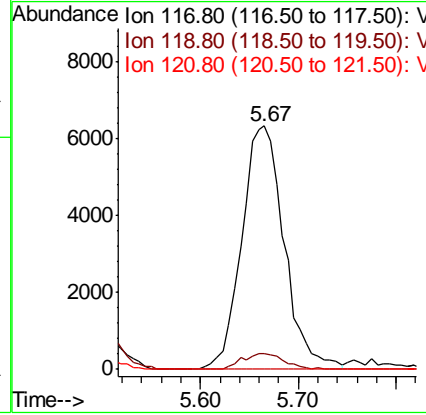
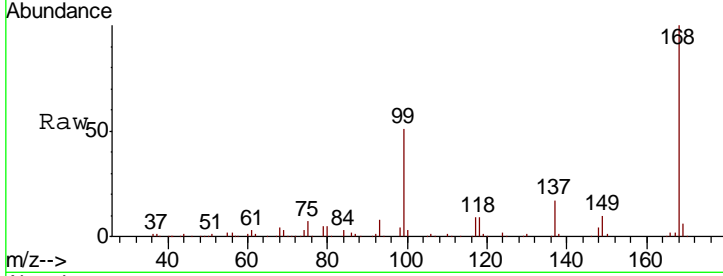




#38
 Carbon Tetrachloride
 Concen: 4.493 ug/l
 RT: 5.67 min Scan# 740
 Delta R.T. -0.12 min
 Lab File: VX004875.D
 Acq: 01 Oct 2018 17:15

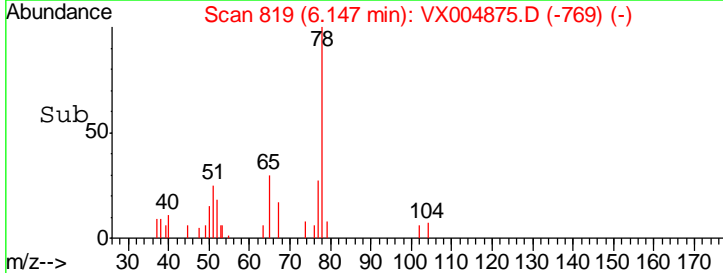
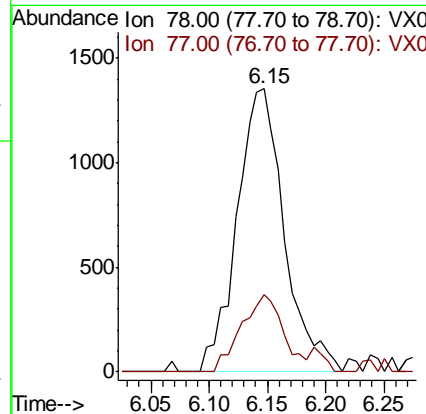
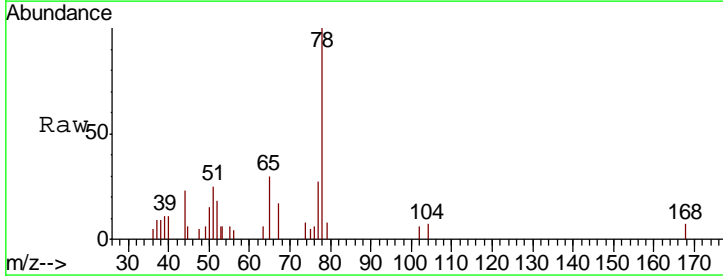
Instrument :
 MSVOA_X
 ClientSampled :
 SA-TW509-4246

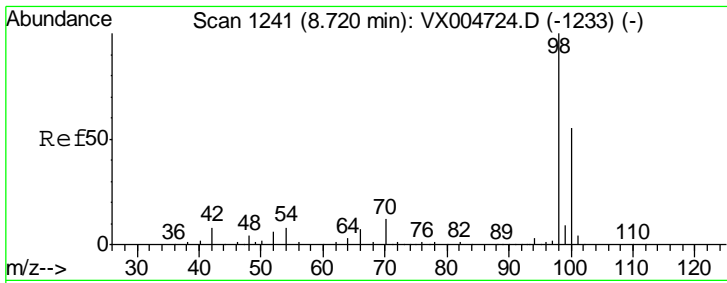
Tgt Ion	Resp	Lower	Upper
117	19014		
119	6.3	78.8	118.2#
121	0.0	24.9	37.3#



#40
 Benzene
 Concen: 0.304 ug/l
 RT: 6.15 min Scan# 819
 Delta R.T. 0.01 min
 Lab File: VX004875.D
 Acq: 01 Oct 2018 17:15

Tgt Ion	Resp	Lower	Upper
78	3837		
77	27.4	19.0	28.4

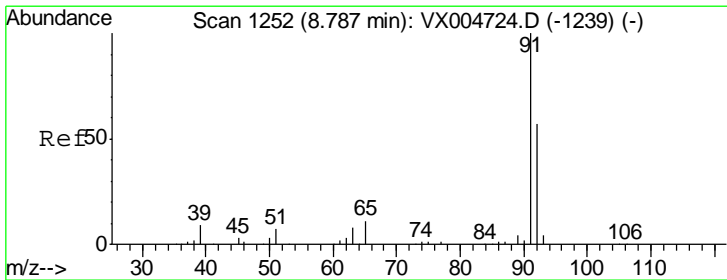
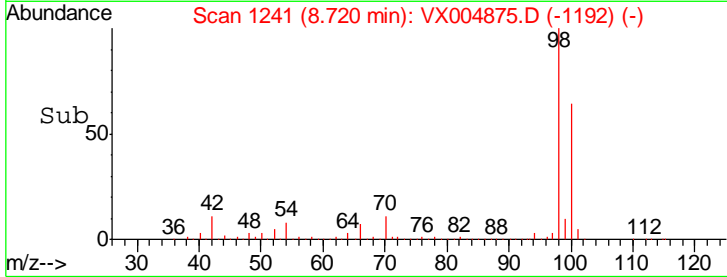
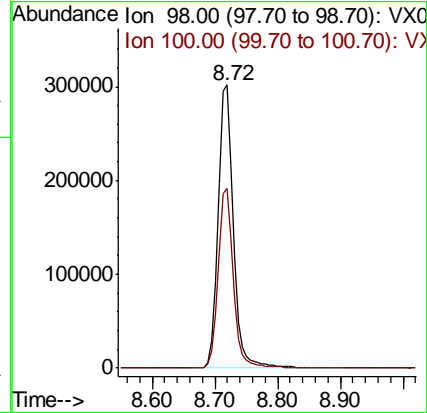
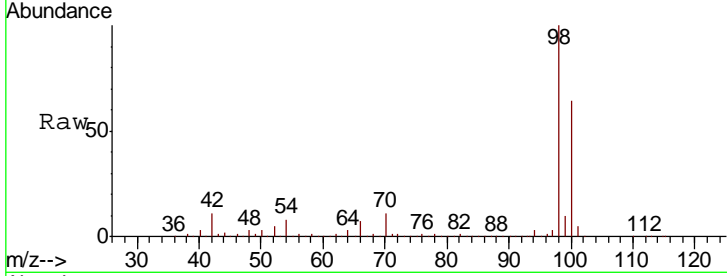




#50
 Toluene-d8
 Concen: 51.983 ug/l
 RT: 8.72 min Scan# 1241
 Delta R.T. 0.00 min
 Lab File: VX004875.D
 Acq: 01 Oct 2018 17:15

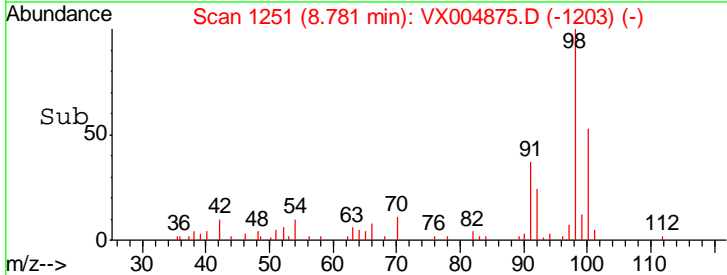
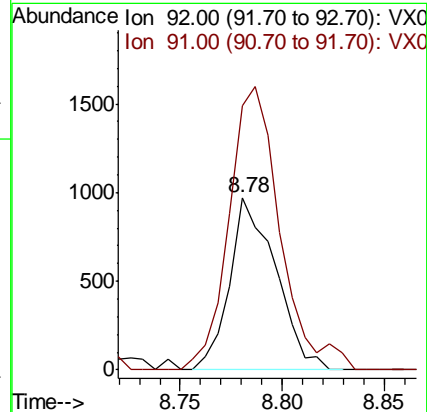
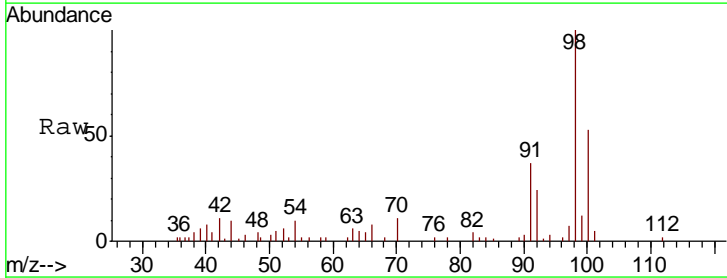
Instrument :
 MSVOA_X
 ClientSampled :
 SA-TW509-4246

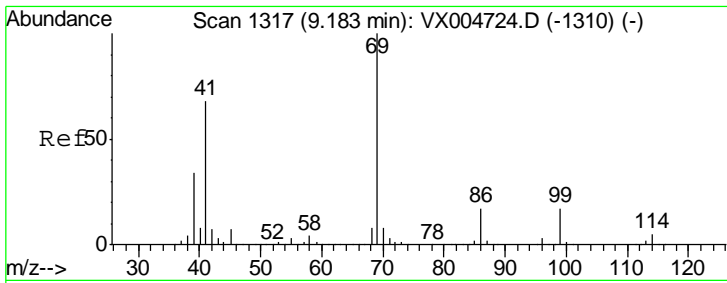
Tgt Ion: 98 Resp: 509988
 Ion Ratio Lower Upper
 98 100
 100 63.3 52.9 79.3



#52
 Toluene
 Concen: 0.220 ug/l
 RT: 8.78 min Scan# 1251
 Delta R.T. -0.01 min
 Lab File: VX004875.D
 Acq: 01 Oct 2018 17:15

Tgt Ion: 92 Resp: 1523
 Ion Ratio Lower Upper
 92 100
 91 182.5 136.4 204.6

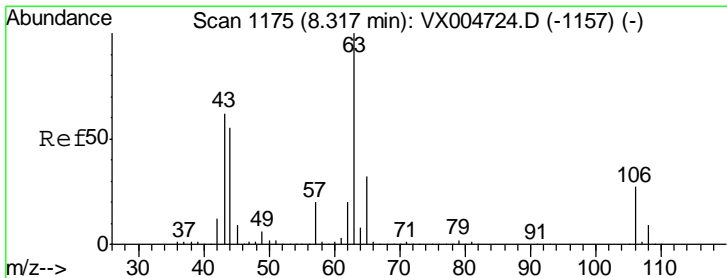
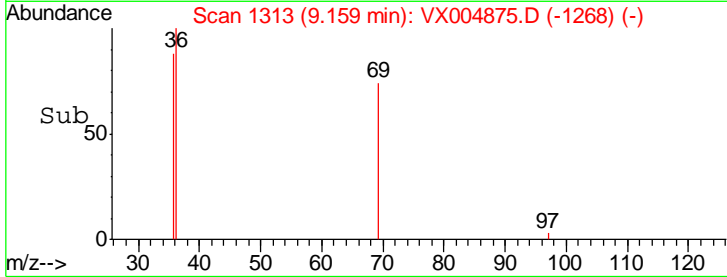
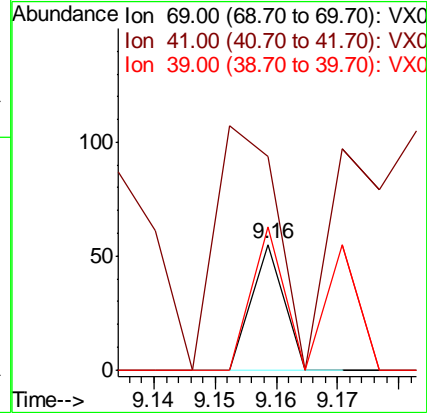
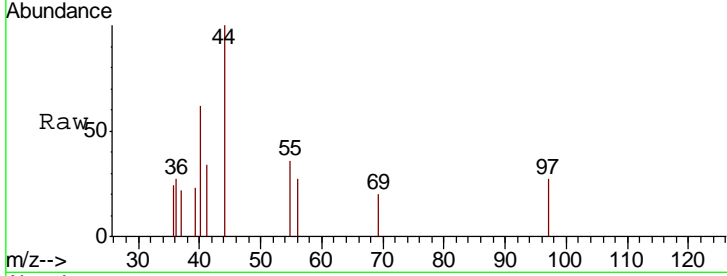




#56
 Ethyl methacrylate
 Concen: 2.866 ug/l
 RT: 9.16 min Scan# 1313
 Delta R.T. -0.02 min
 Lab File: VX004875.D
 Acq: 01 Oct 2018 17:15

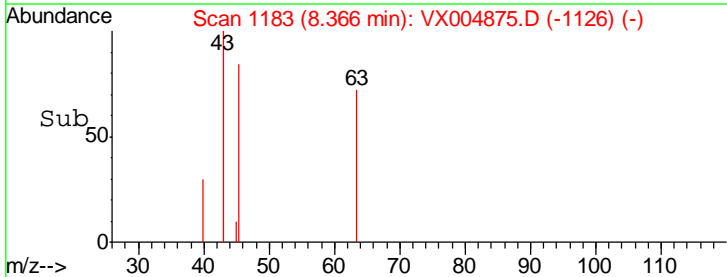
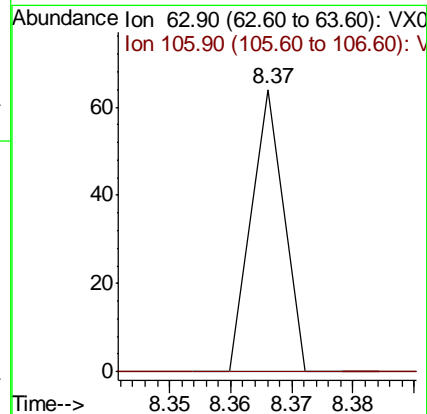
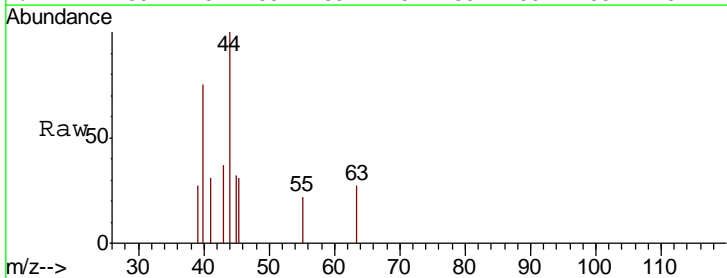
Instrument :
 MSVOA_X
 ClientSampled :
 SA-TW509-4246

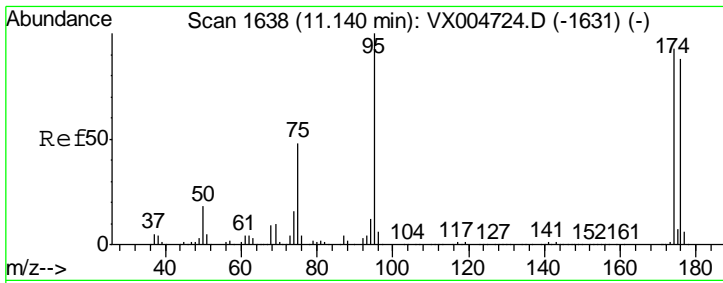
Tgt Ion	Resp	Lower	Upper
69	100		
41	370.0	51.0	76.4#
39	215.0	26.1	39.1#



#58
 2-Chloroethyl Vinyl ether
 Concen: 14.250 ug/l
 RT: 8.37 min Scan# 1183
 Delta R.T. 0.05 min
 Lab File: VX004875.D
 Acq: 01 Oct 2018 17:15

Tgt Ion	Resp	Lower	Upper
63	100		
106	0.0	23.9	35.9#

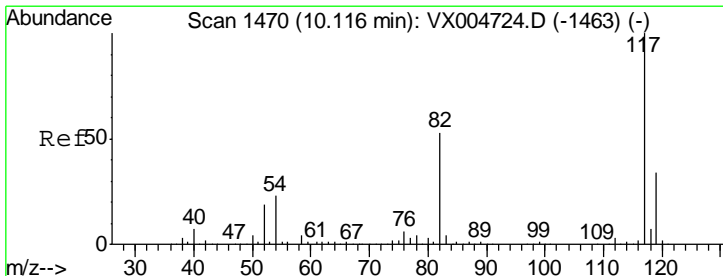
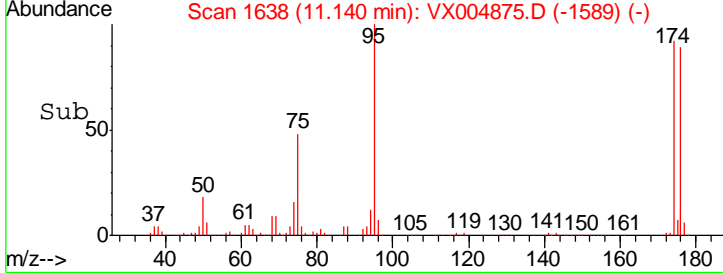
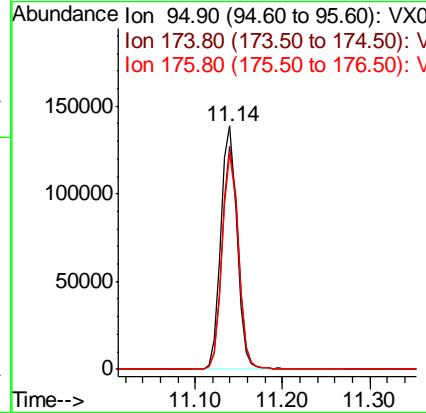
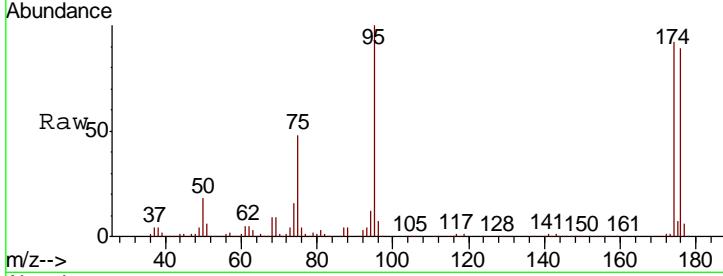




#62
 4-Bromofluorobenzene
 Concen: 50.289 ug/l
 RT: 11.14 min Scan# 1638
 Delta R.T. 0.00 min
 Lab File: VX004875.D
 Acq: 01 Oct 2018 17:15

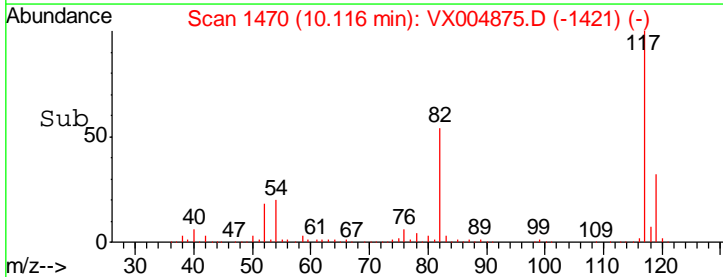
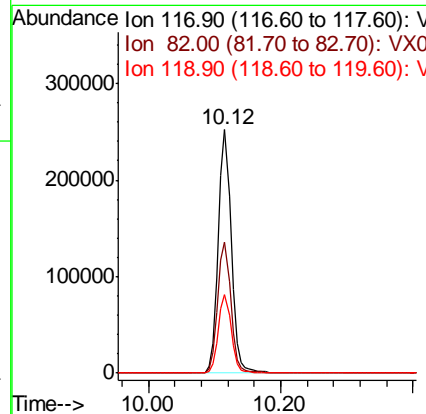
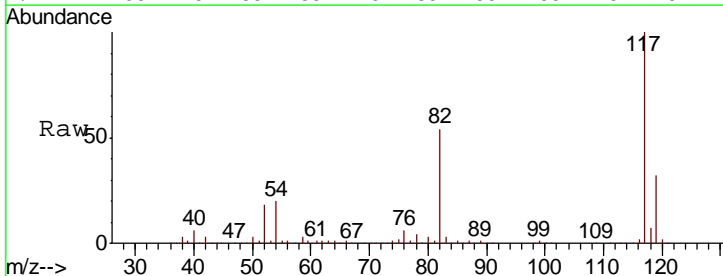
Instrument : MSVOA_X
 ClientSampled : SA-TW509-4246

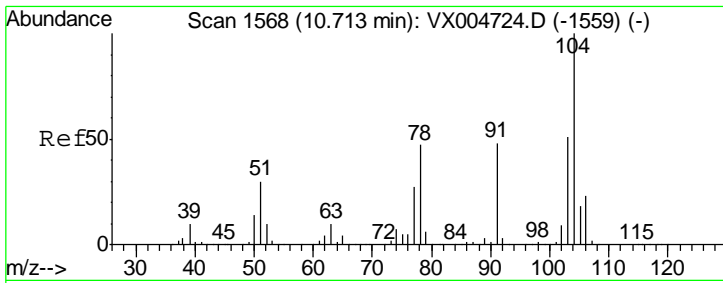
Tgt Ion	Resp	Lower	Upper
95	177738		
174	91.5	0.0	185.2
176	88.3	0.0	178.6



#63
 Chlorobenzene-d5
 Concen: 50.000 ug/l
 RT: 10.12 min Scan# 1470
 Delta R.T. 0.00 min
 Lab File: VX004875.D
 Acq: 01 Oct 2018 17:15

Tgt Ion	Resp	Lower	Upper
117	339861		
82	54.0	47.8	71.6
119	32.1	29.3	43.9

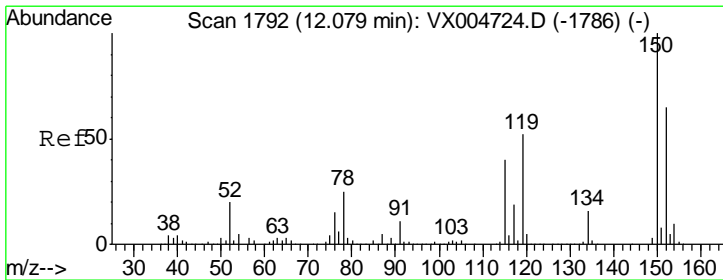
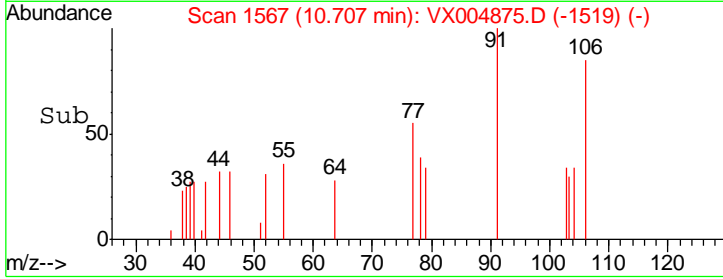
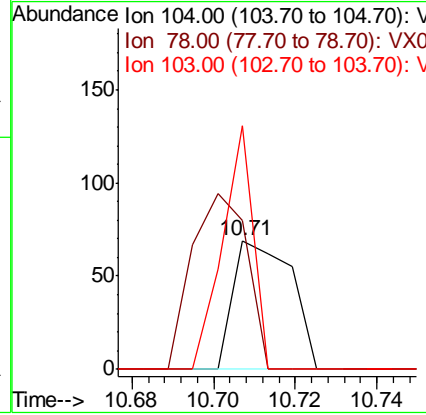
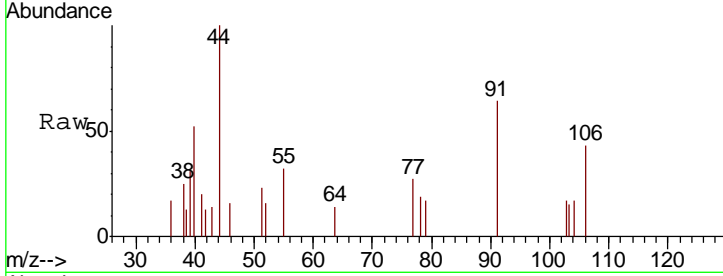




#70
 Styrene
 Concen: 2.147 ug/l
 RT: 10.71 min Scan# 1567
 Delta R.T. -0.01 min
 Lab File: VX004875.D
 Acq: 01 Oct 2018 17:15

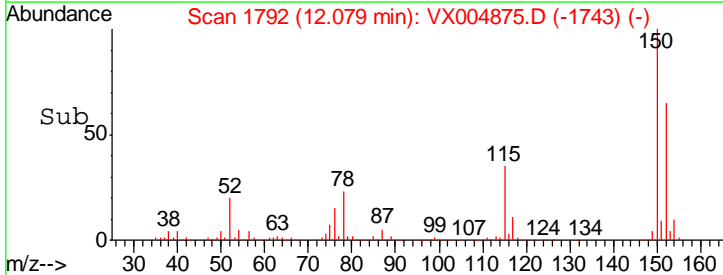
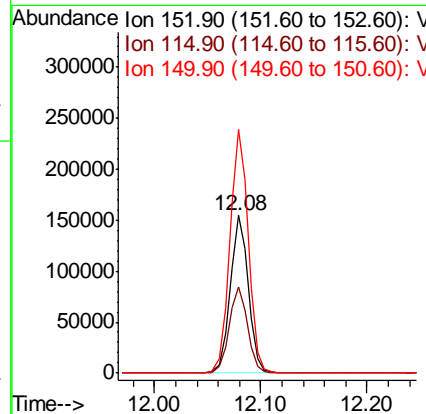
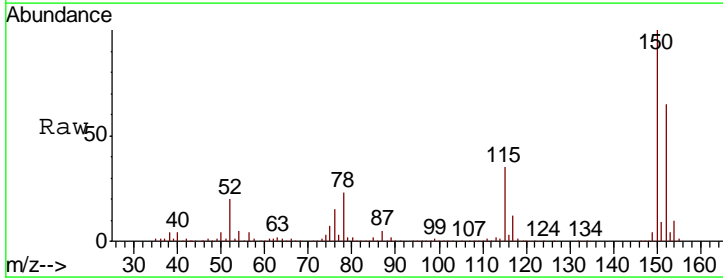
Instrument :
 MSVOA_X
 ClientSampled :
 SA-TW509-4246

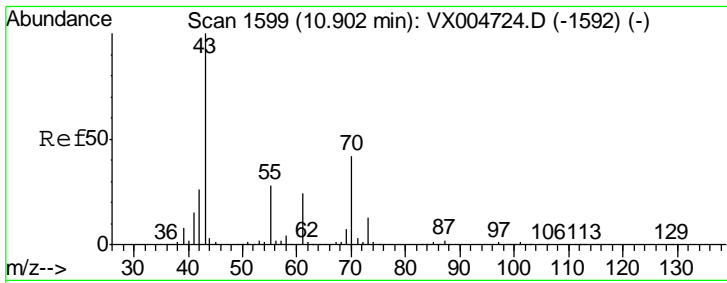
Tgt Ion	Resp	Lower	Upper
104	100		
78	129.4	37.4	56.0#
103	100.0	43.8	65.6#



#72
 1,4-Dichlorobenzene-d4
 Concen: 50.000 ug/l
 RT: 12.08 min Scan# 1792
 Delta R.T. 0.00 min
 Lab File: VX004875.D
 Acq: 01 Oct 2018 17:15

Tgt Ion	Resp	Lower	Upper
152	100		
115	55.5	39.0	117.0
150	157.3	0.0	351.0

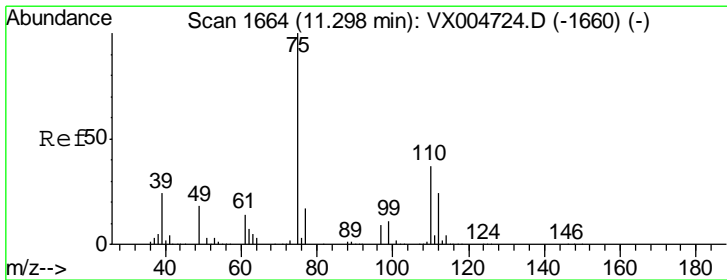
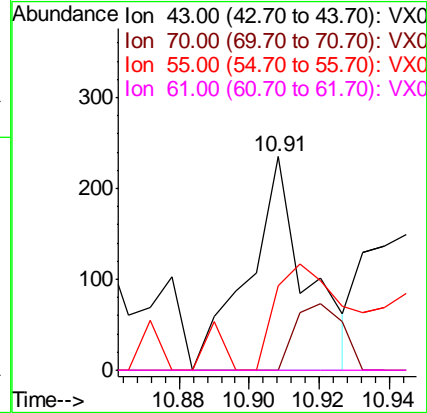
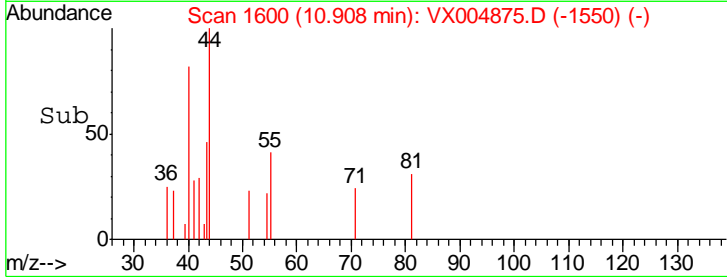
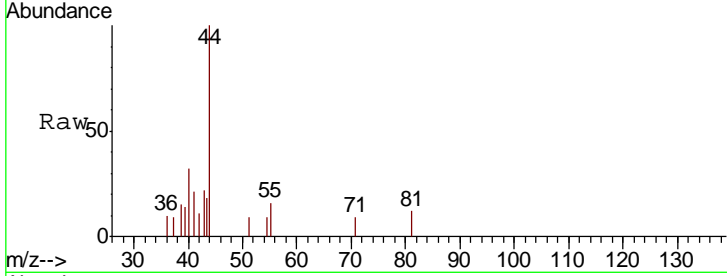




#74
 N-amyl acetate
 Concen: 1.789 ug/l
 RT: 10.91 min Scan# 1600
 Delta R.T. 0.01 min
 Lab File: VX004875.D
 Acq: 01 Oct 2018 17:15

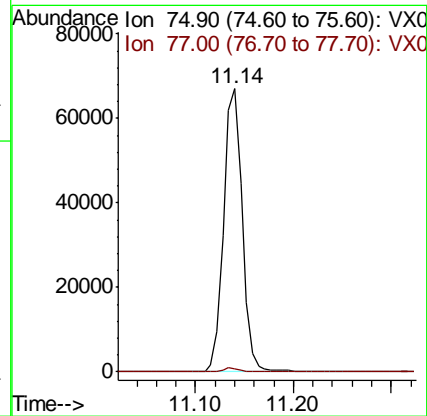
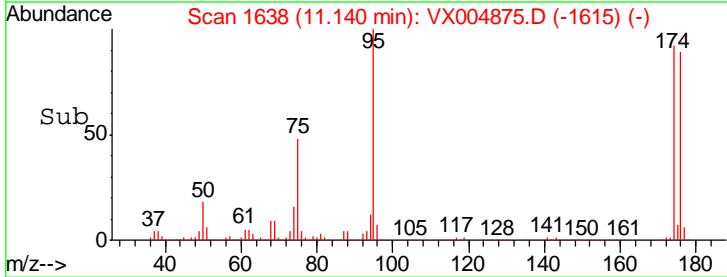
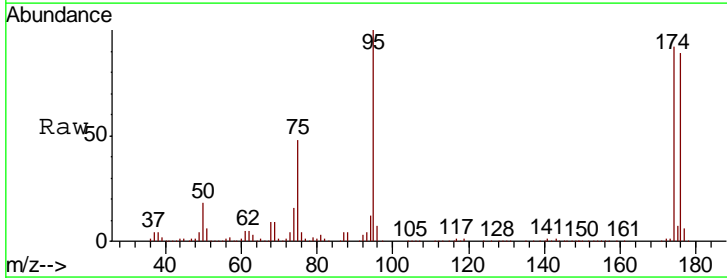
Instrument :
 MSVOA_X
 ClientSampled :
 SA-TW509-4246

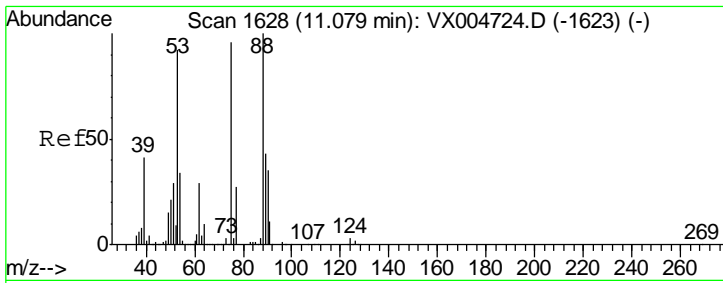
Tgt Ion	Resp	Lower	Upper
43	100		
70	26.0	37.4	56.0#
55	60.2	21.8	32.8#
61	0.0	20.6	30.8#



#76
 1,2,3-Trichloropropane
 Concen: 21.582 ug/l
 RT: 11.14 min Scan# 1638
 Delta R.T. -0.16 min
 Lab File: VX004875.D
 Acq: 01 Oct 2018 17:15

Tgt Ion	Resp	Lower	Upper
75	100		
77	1.4	20.2	60.6#

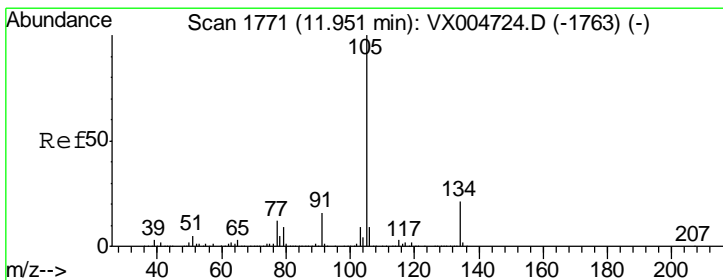
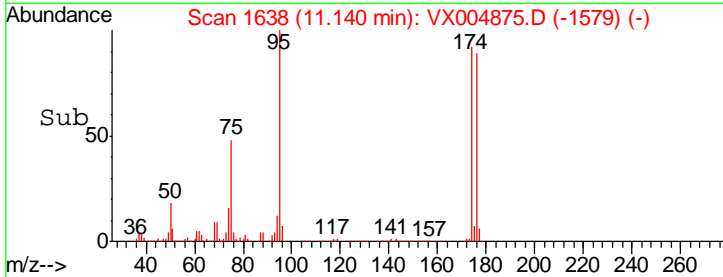
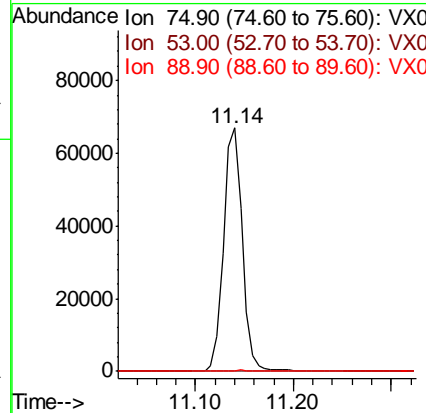
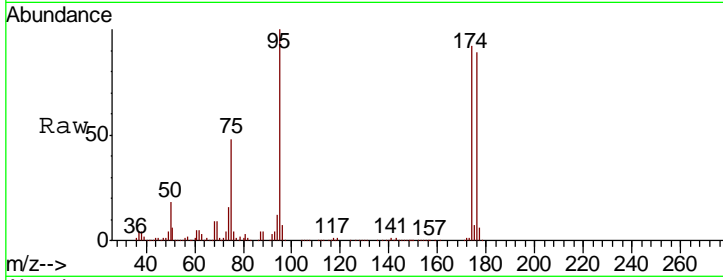




#81
 trans-1,4-Dichloro-2-butene
 Concen: 58.510 ug/l
 RT: 11.14 min Scan# 1638
 Delta R.T. 0.06 min
 Lab File: VX004875.D
 Acq: 01 Oct 2018 17:15

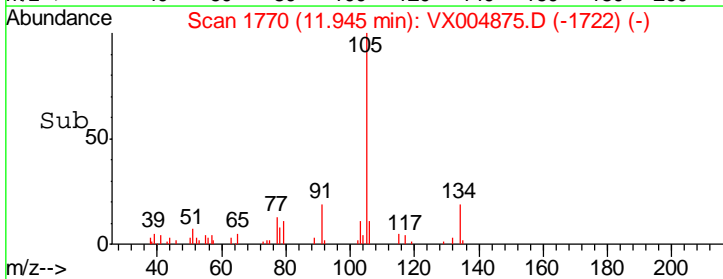
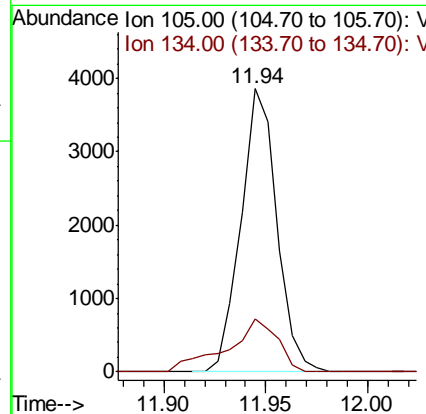
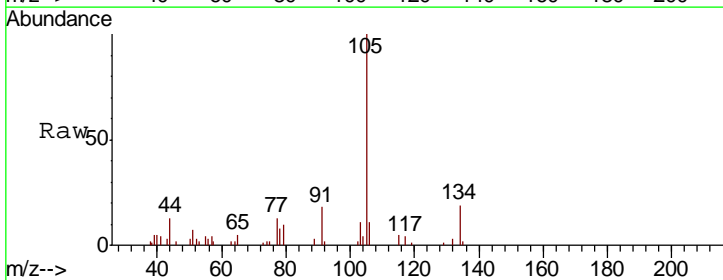
Instrument :
 MSVOA_X
 ClientSampled :
 SA-TW509-4246

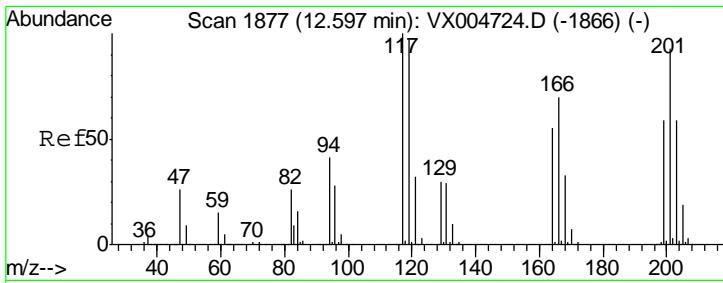
Tgt Ion	Resp	Lower	Upper
75	100		
53	0.4	80.1	120.1#
89	0.4	37.2	55.8#



#85
 sec-Butylbenzene
 Concen: 0.407 ug/l
 RT: 11.94 min Scan# 1770
 Delta R.T. -0.01 min
 Lab File: VX004875.D
 Acq: 01 Oct 2018 17:15

Tgt Ion	Resp	Lower	Upper
105	100		
134	26.3	10.5	31.5

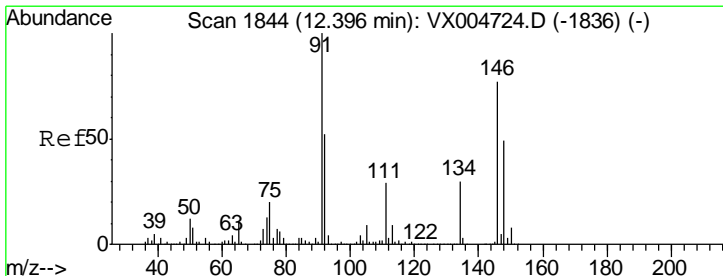
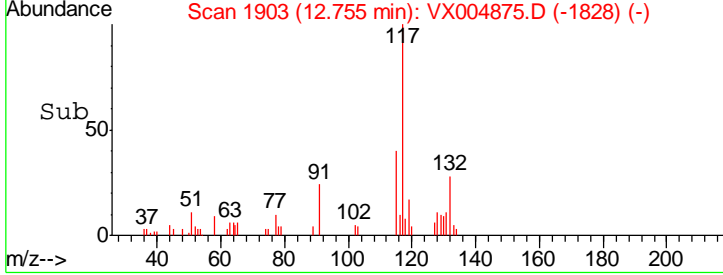
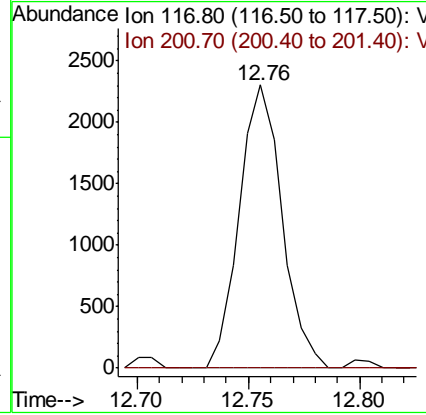
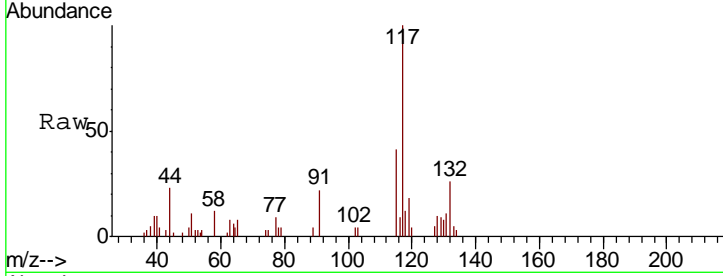




#90
 Hexachloroethane
 Concen: 1.758 ug/l
 RT: 12.76 min Scan# 1903
 Delta R.T. 0.16 min
 Lab File: VX004875.D
 Acq: 01 Oct 2018 17:15

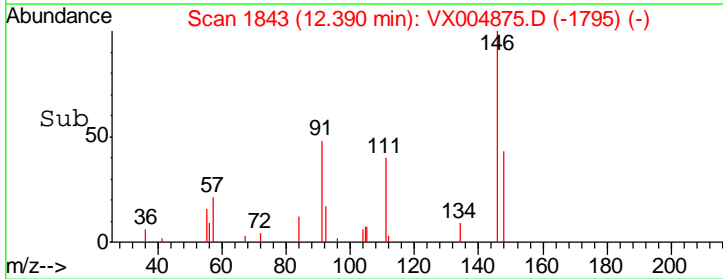
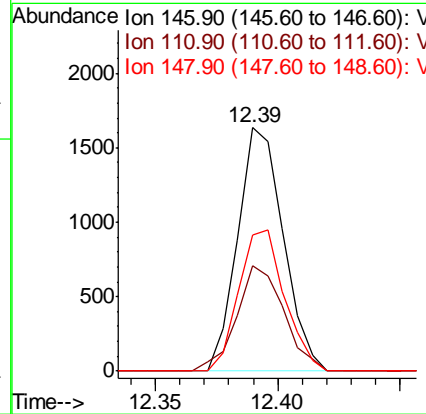
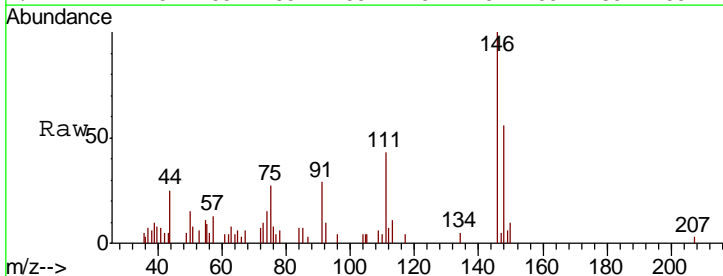
Instrument : MSVOA_X
 ClientSampled : SA-TW509-4246

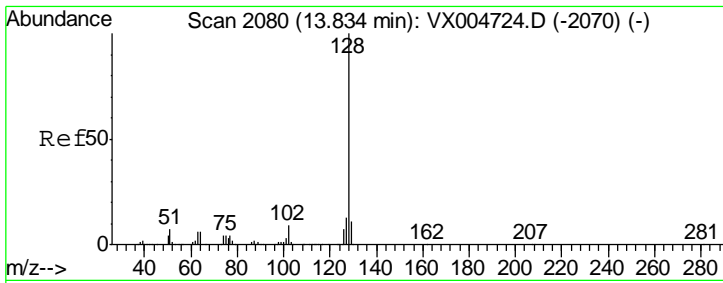
Tgt Ion	Resp	Lower	Upper
117	100		
201	0.0	46.9	140.6#



#91
 1,2-Dichlorobenzene
 Concen: 0.323 ug/l
 RT: 12.39 min Scan# 1843
 Delta R.T. -0.01 min
 Lab File: VX004875.D
 Acq: 01 Oct 2018 17:15

Tgt Ion	Resp	Lower	Upper
146	100		
111	44.7	19.4	58.1
148	58.2	32.8	98.3





#95
 Naphthalene
 Concen: 0.801 ug/l
 RT: 13.83 min Scan# 2080
 Delta R.T. 0.00 min
 Lab File: VX004875.D
 Acq: 01 Oct 2018 17:15

Instrument : MSVOA_X
 ClientSampled : SA-TW509-4246

Tot Ion	Ratio	Lower	Upper
128	100		
127	12.9	10.2	15.2
129	14.9	8.6	12.8#

