

Data Path : Z:\VOASRV\HPCHEM1\MSVOA X\DATA\VX100119\  
 Data File : VX012728.D  
 Acq On : 01 Oct 2019 13:17  
 Operator : JC/SP  
 Sample : K5081-16  
 Misc : 5.0mL/MSVOA X/WATER  
 ALS Vial : 7 Sample Multiplier: 1

Instrument :  
 MSVOA\_X  
 ClientSampleId :  
 SA-PZ1221-20190926

Quant Time: Oct 02 01:45:50 2019  
 Quant Method : Z:\VOASRV\HPCHEM1\MSVOA\_X\METHOD\82X092319W.M  
 Quant Title : SW846 8260  
 QLast Update : Mon Sep 23 12:27:01 2019  
 Response via : Initial Calibration

Internal Standards	R.T.	QIon	Response	Conc	Units	Dev(Min)
1) Pentafluorobenzene	5.65	168	163429	50.00	ug/l	0.00
34) 1,4-Difluorobenzene	6.85	114	283935	50.00	ug/l	0.00
63) Chlorobenzene-d5	10.11	117	241350	50.00	ug/l	0.00
72) 1,4-Dichlorobenzene-d4	12.07	152	90247	50.00	ug/l	0.00

## System Monitoring Compounds

33) 1,2-Dichloroethane-d4	6.06	65	115714	48.62	ug/l	0.00
Spiked Amount	50.000		Recovery	=	97.24%	
35) Dibromofluoromethane	5.49	113	85185	50.38	ug/l	0.00
Spiked Amount	50.000		Recovery	=	100.76%	
50) Toluene-d8	8.71	98	334410	51.35	ug/l	0.00
Spiked Amount	50.000		Recovery	=	102.70%	
62) 4-Bromofluorobenzene	11.14	95	113535	44.34	ug/l	0.00
Spiked Amount	50.000		Recovery	=	88.68%	

## Target Compounds

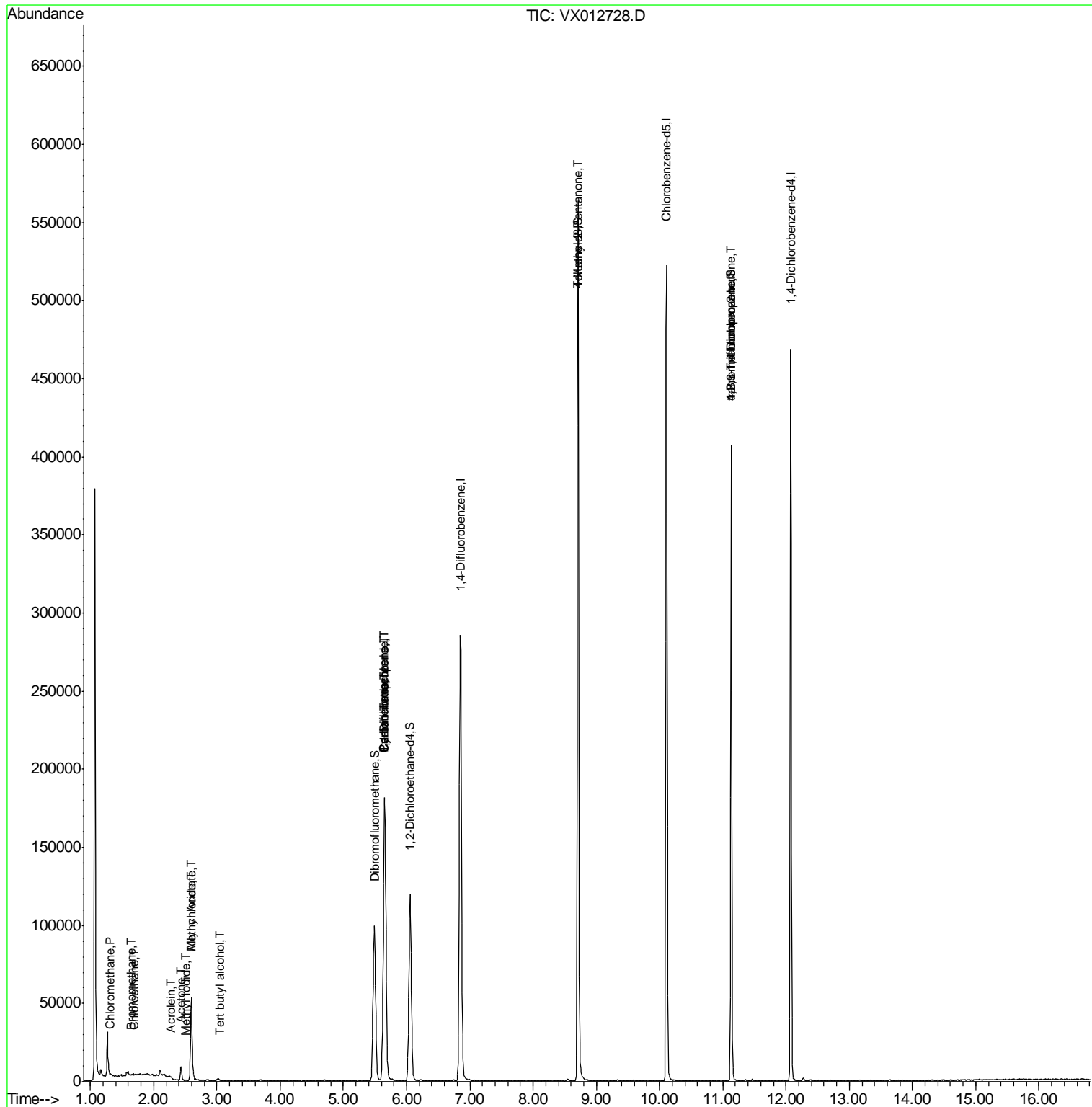
						Qvalue
3) Chloromethane	1.32	50	625	0.296	ug/l	95
5) Bromomethane	1.64	94	299	0.362	ug/l #	24
6) Chloroethane	1.69	64	1050	0.742	ug/l #	45
10) Methyl Iodide	2.50	142	245	5.070	ug/l #	56
11) Tert butyl alcohol	3.04	59	1250	2.103	ug/l #	72
13) Acrolein	2.28	56	34	10.331	ug/l #	15
14) Allyl chloride	2.59	41	5557	1.594	ug/l #	72
16) Acetone	2.44	43	9306	7.382	ug/l	97
18) Methyl Acetate	2.59	43	14593	4.916	ug/l #	54
31) Cyclohexane	5.65	56	3805	1.149	ug/l #	1
36) 1,1-Dichloropropene	5.65	75	13631	4.981	ug/l #	51
38) Carbon Tetrachloride	5.65	117	18290	6.579	ug/l #	17
51) 4-Methyl-2-Pentanone	8.71	43	1773	0.537	ug/l #	1
76) 1,2,3-Trichloropropane	11.14	75	57759	24.195	ug/l #	38
81) trans-1,4-Dichloro-2-buten	11.14	75	57759	69.337	ug/l #	8

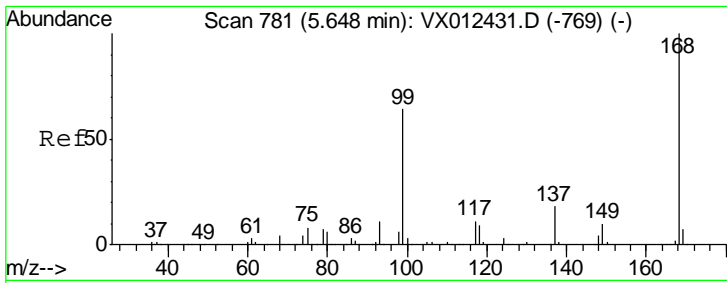
(#) = qualifier out of range (m) = manual integration (+) = signals summed

Data Path : Z:\VOASRV\HPCHEM1\MSVOA X\DATA\VX100119\  
 Data File : VX012728.D  
 Acq On : 01 Oct 2019 13:17  
 Operator : JC/SP  
 Sample : K5081-16  
 Misc : 5.0mL/MSVOA X/WATER  
 ALS Vial : 7 Sample Multiplier: 1

Instrument :  
 MSVOA\_X  
 Client Sampled :  
 SA-PZ1221-20190926

Quant Time: Oct 02 01:45:50 2019  
 Quant Method : Z:\VOASRV\HPCHEM1\MSVOA\_X\METHOD\82X092319W.M  
 Quant Title : SW846 8260  
 QLast Update : Mon Sep 23 12:27:01 2019  
 Response via : Initial Calibration

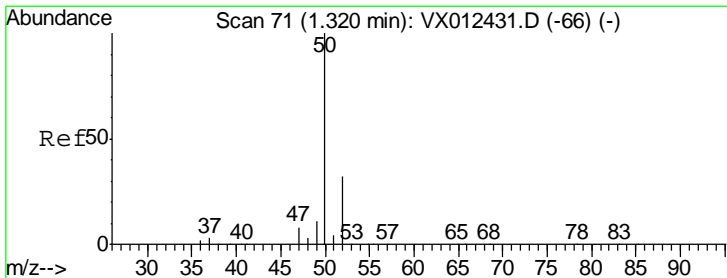
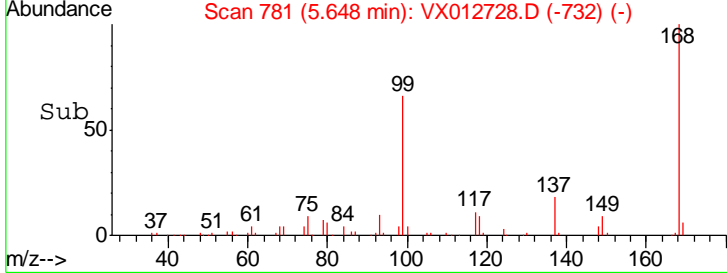
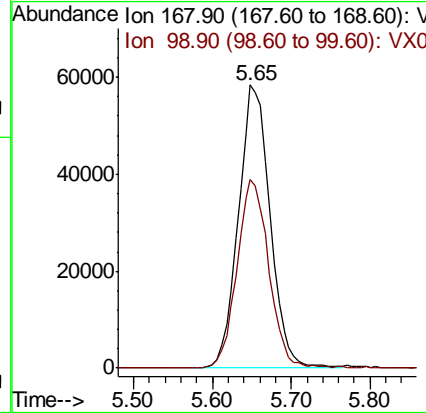
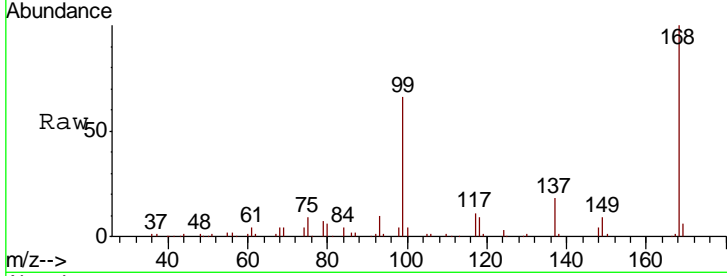




#1  
 Pentafluorobenzene  
 Concen: 50.000 ug/l  
 RT: 5.65 min Scan# 781  
 Delta R.T. 0.00 min  
 Lab File: VX012728.D  
 Acq: 01 Oct 2019 13:17

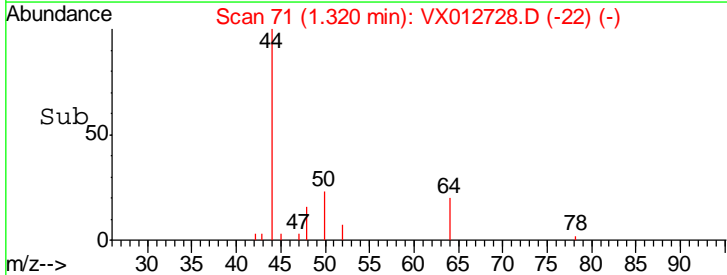
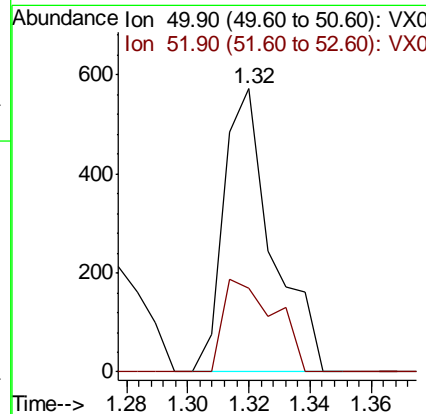
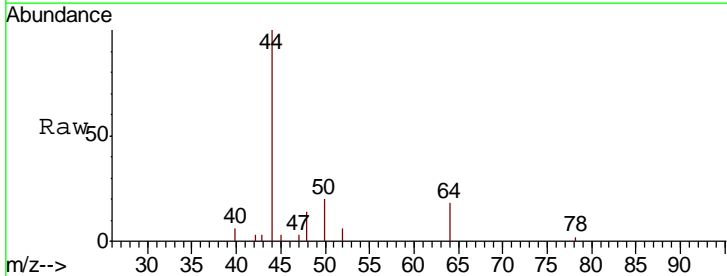
Instrument :  
 MSVOA\_X  
 ClientSampleId :  
 SA-PZ1221-20190926

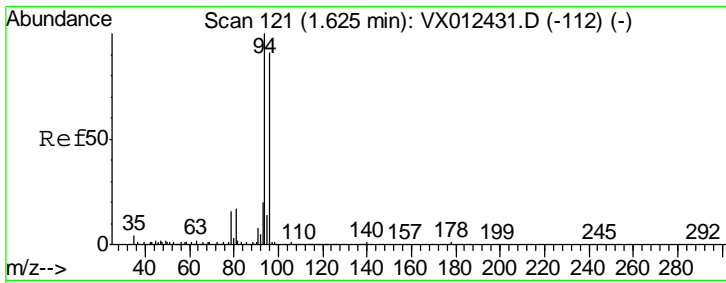
Tgt Ion: 168 Resp: 163429  
 Ion Ratio Lower Upper  
 168 100  
 99 66.5 51.4 77.2



#3  
 Chloromethane  
 Concen: 0.296 ug/l  
 RT: 1.32 min Scan# 71  
 Delta R.T. 0.00 min  
 Lab File: VX012728.D  
 Acq: 01 Oct 2019 13:17

Tgt Ion: 50 Resp: 625  
 Ion Ratio Lower Upper  
 50 100  
 52 29.4 25.7 38.5

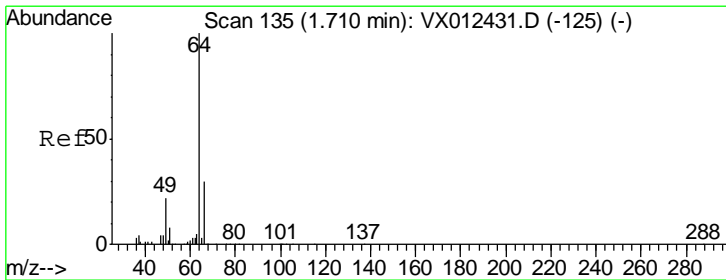
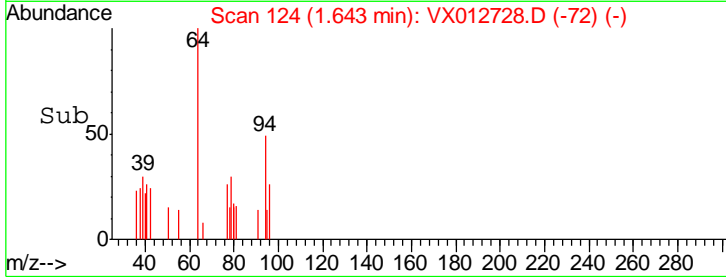
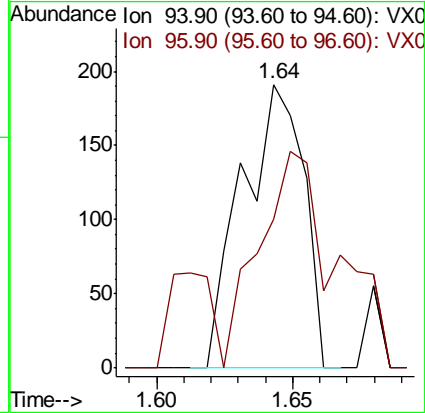
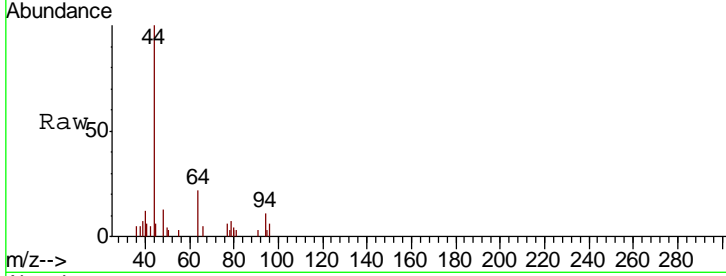




#5  
 Bromomethane  
 Concen: 0.362 ug/l  
 RT: 1.64 min Scan# 124  
 Delta R.T. 0.02 min  
 Lab File: VX012728.D  
 Acq: 01 Oct 2019 13:17

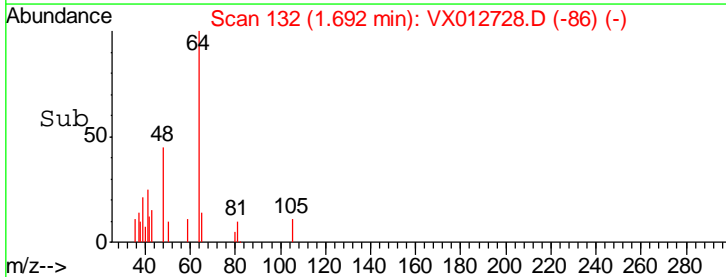
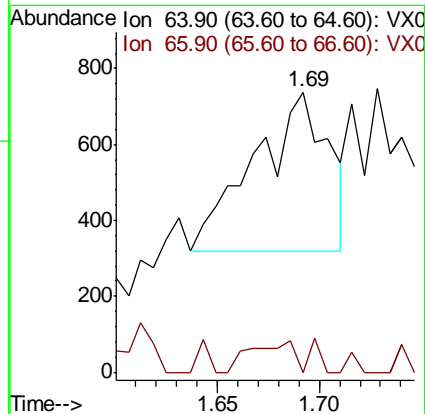
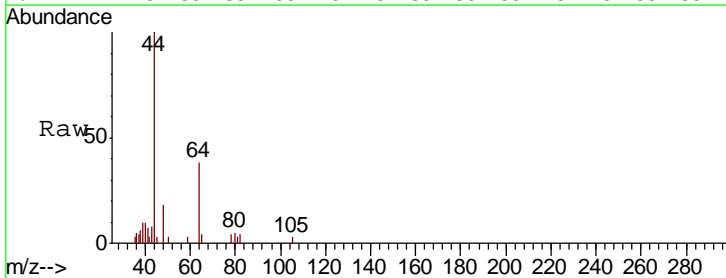
Instrument :  
 MSVOA\_X  
 ClientSampled :  
 SA-PZ1221-20190926

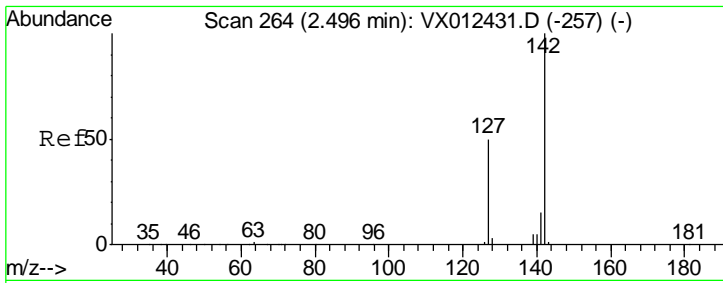
Tgt Ion: 94 Resp: 299  
 Ion Ratio Lower Upper  
 94 100  
 96 18.8 72.8 109.2#



#6  
 Chloroethane  
 Concen: 0.742 ug/l  
 RT: 1.69 min Scan# 132  
 Delta R.T. -0.02 min  
 Lab File: VX012728.D  
 Acq: 01 Oct 2019 13:17

Tgt Ion: 64 Resp: 1050  
 Ion Ratio Lower Upper  
 64 100  
 66 0.0 24.0 36.0#

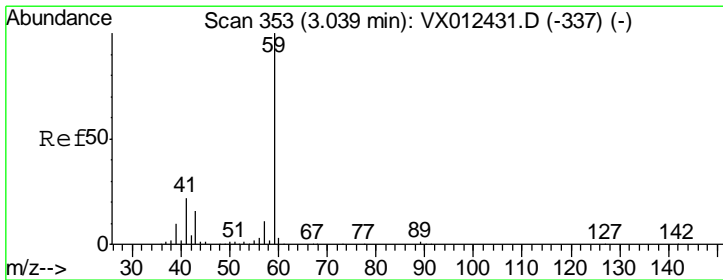
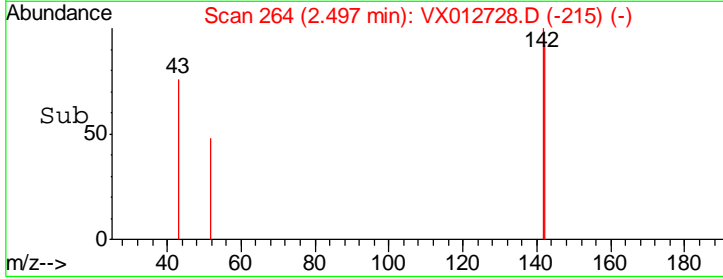
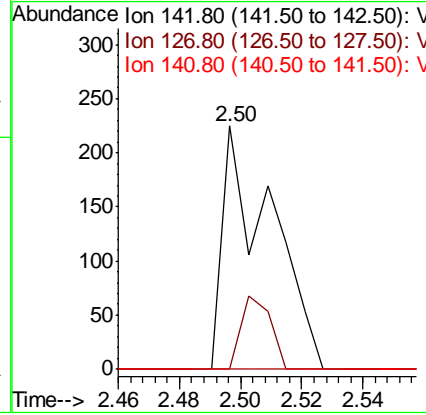
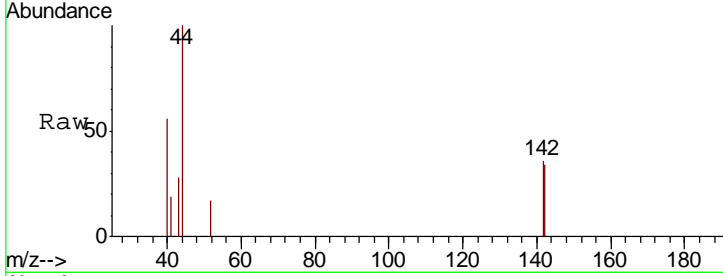




#10  
Methyl Iodide  
Concen: 5.070 ug/l  
RT: 2.50 min Scan# 264  
Delta R.T. 0.00 min  
Lab File: VX012728.D  
Acq: 01 Oct 2019 13:17

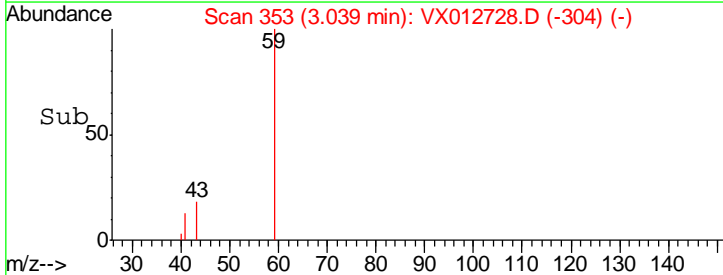
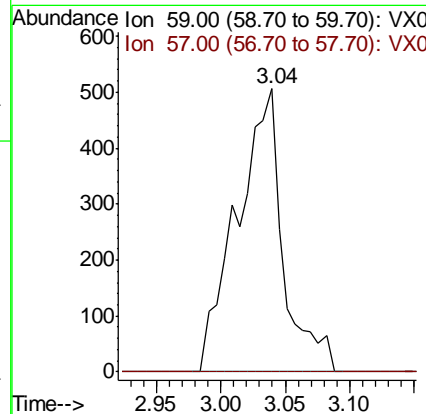
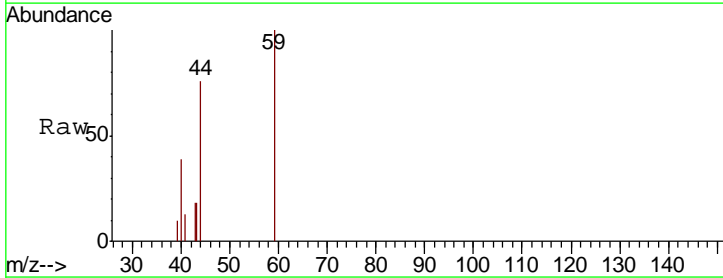
Instrument :  
MSVOA\_X  
ClientSampleId :  
SA-PZ122I-20190926

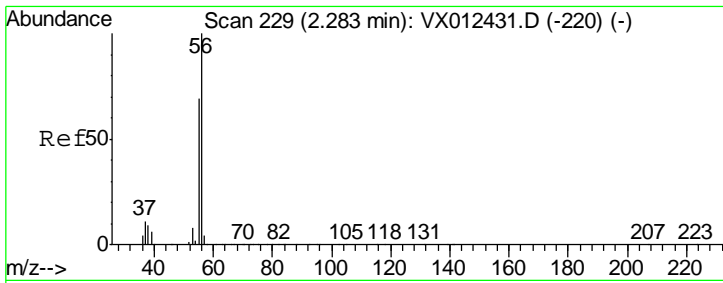
Tgt Ion	Resp	Lower	Upper
142	245		
127	18.4	40.8	61.2#
141	0.0	12.1	18.1#



#11  
Tert butyl alcohol  
Concen: 2.103 ug/l  
RT: 3.04 min Scan# 353  
Delta R.T. 0.00 min  
Lab File: VX012728.D  
Acq: 01 Oct 2019 13:17

Tgt Ion	Resp	Lower	Upper
59	1250		
57	0.0	8.3	12.5#

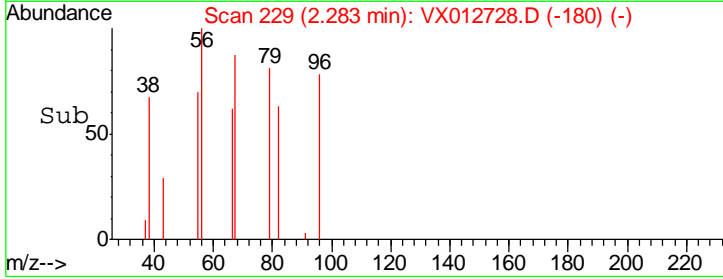
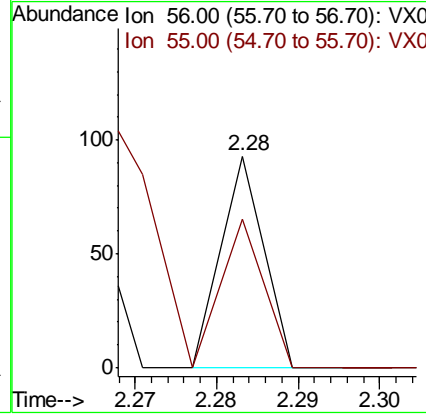
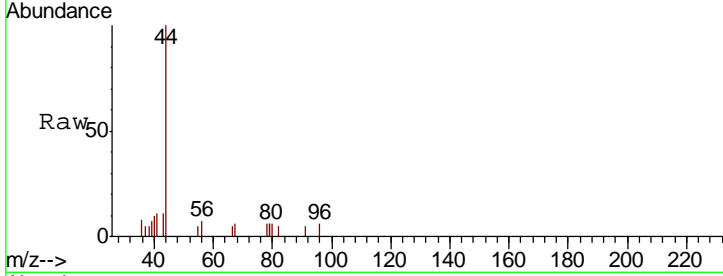




#13  
 Acrolein  
 Concen: 10.331 ug/l  
 RT: 2.28 min Scan# 229  
 Delta R.T. 0.00 min  
 Lab File: VX012728.D  
 Acq: 01 Oct 2019 13:17

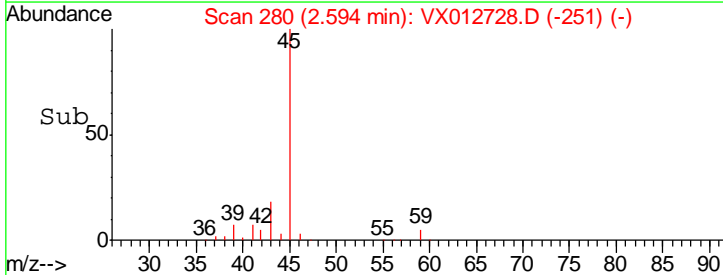
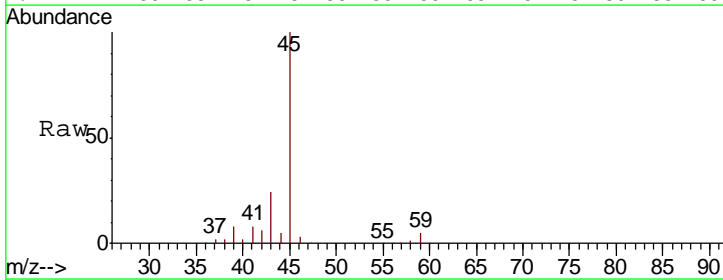
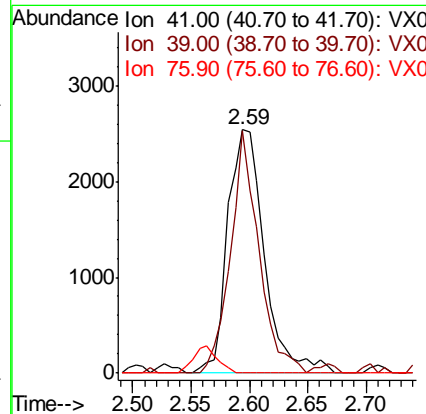
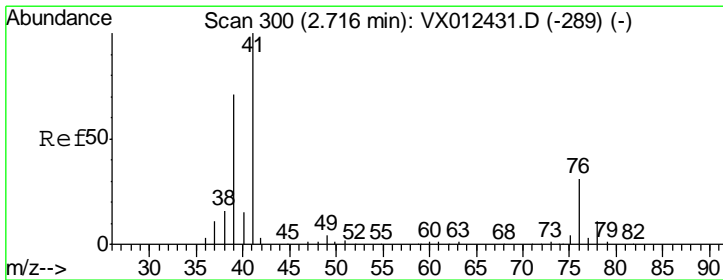
Instrument :  
 MSVOA\_X  
 ClientSampled :  
 SA-PZ1221-20190926

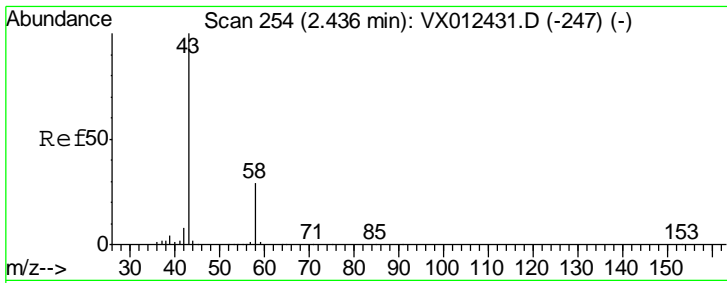
Tgt Ion	Resp	Lower	Upper
56	100		
55	0.0	55.8	83.8#



#14  
 Allyl chloride  
 Concen: 1.594 ug/l  
 RT: 2.59 min Scan# 280  
 Delta R.T. -0.12 min  
 Lab File: VX012728.D  
 Acq: 01 Oct 2019 13:17

Tgt Ion	Resp	Lower	Upper
41	100		
39	76.9	51.3	76.9
76	0.0	22.6	33.8#

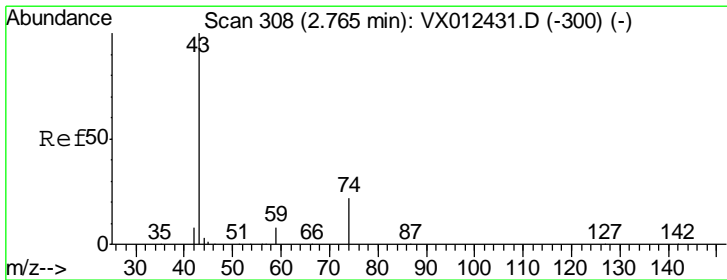
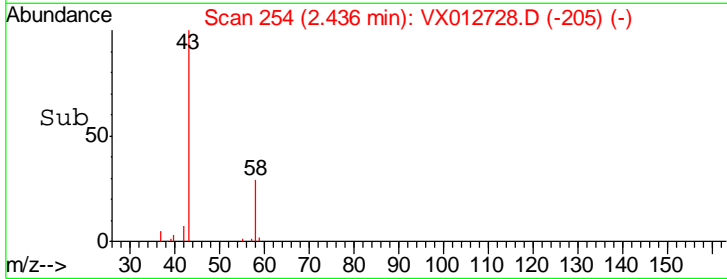
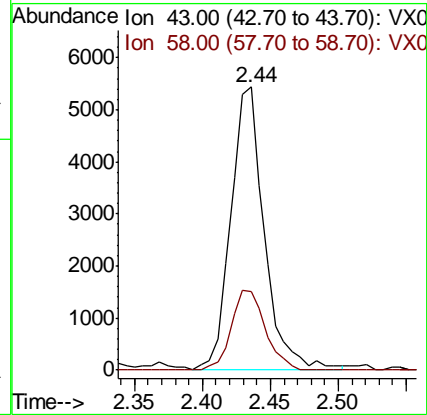
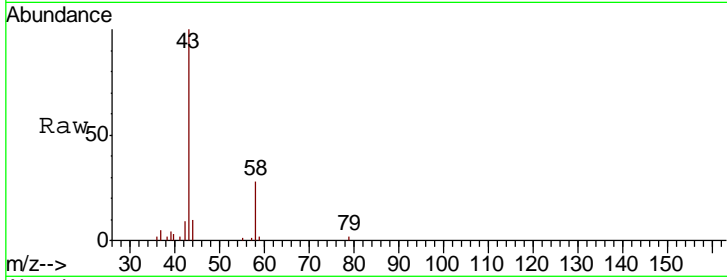




#16  
 Acetone  
 Concen: 7.382 ug/l  
 RT: 2.44 min Scan# 254  
 Delta R.T. 0.00 min  
 Lab File: VX012728.D  
 Acq: 01 Oct 2019 13:17

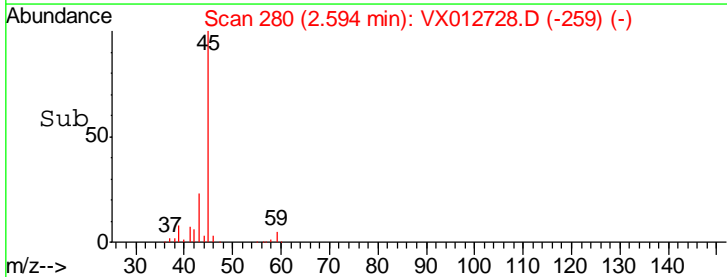
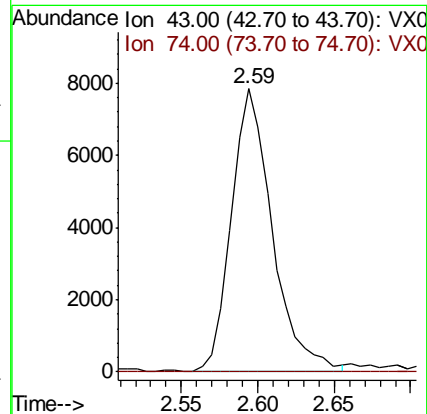
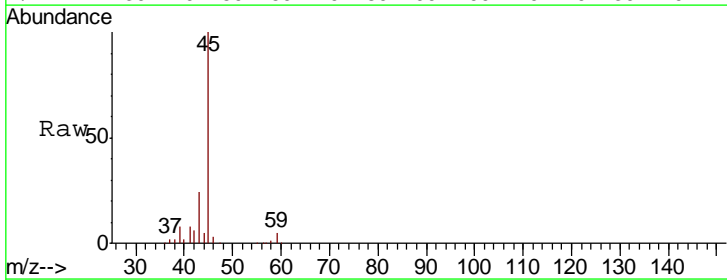
Instrument :  
 MSVOA\_X  
 ClientSampled :  
 SA-PZ1221-20190926

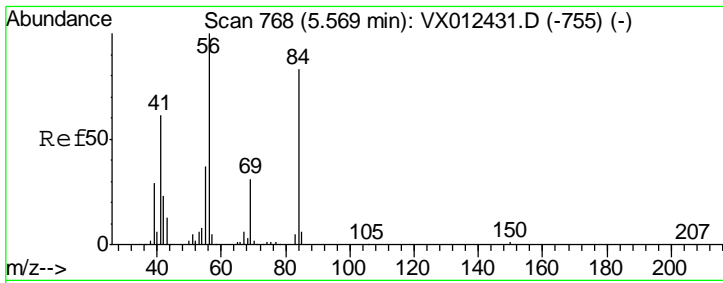
Tgt Ion	Resp	Lower	Upper
43	100		
58	27.7	23.3	34.9



#18  
 Methyl Acetate  
 Concen: 4.916 ug/l  
 RT: 2.59 min Scan# 280  
 Delta R.T. -0.17 min  
 Lab File: VX012728.D  
 Acq: 01 Oct 2019 13:17

Tgt Ion	Resp	Lower	Upper
43	100		
74	0.0	17.7	26.5#

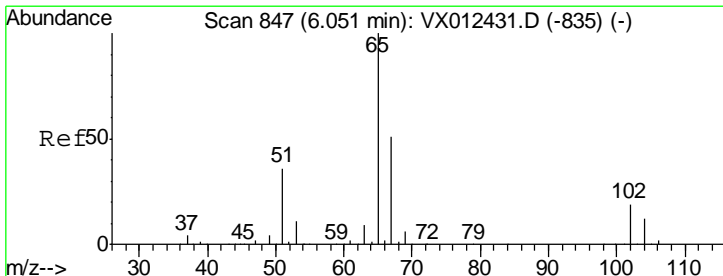
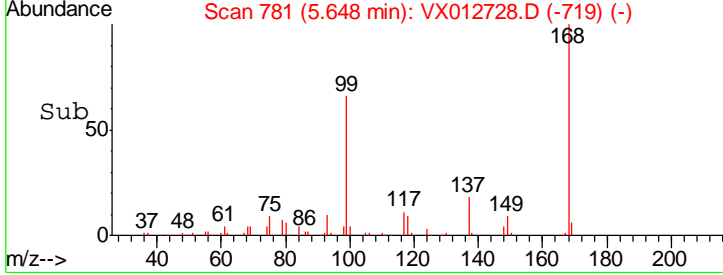
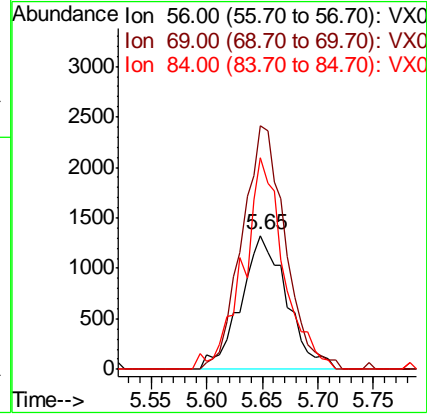
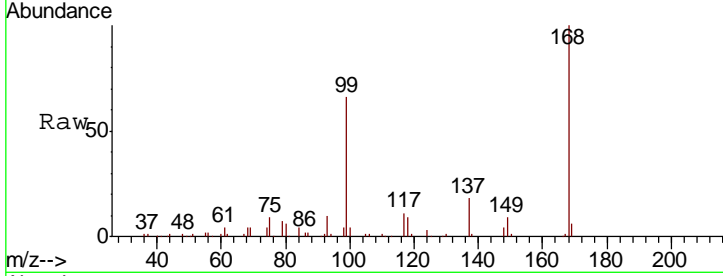




#31  
 Cyclohexane  
 Concen: 1.149 ug/l  
 RT: 5.65 min Scan# 781  
 Delta R.T. 0.08 min  
 Lab File: VX012728.D  
 Acq: 01 Oct 2019 13:17

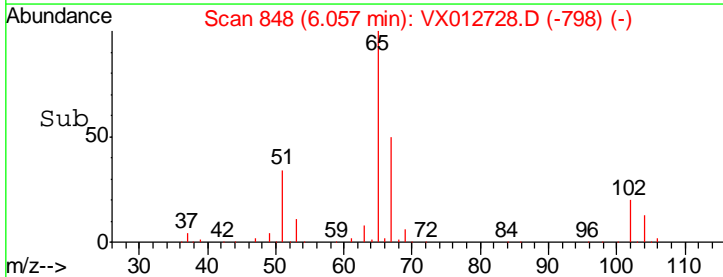
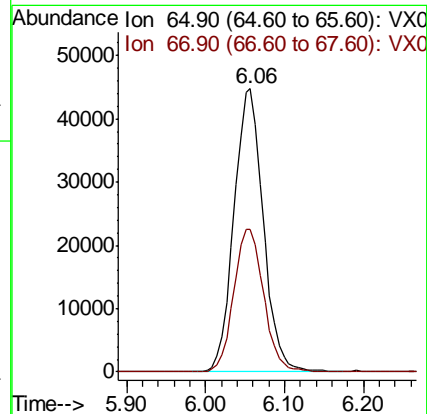
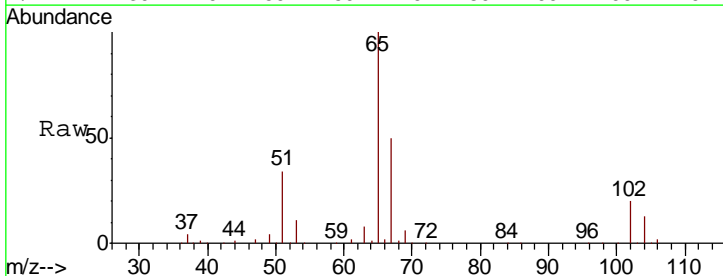
Instrument :  
 MSVOA\_X  
 ClientSampled :  
 SA-PZ1221-20190926

Tgt Ion	Resp	Lower	Upper
56	3805		
69	181.6	25.0	37.6#
84	158.0	66.4	99.6#

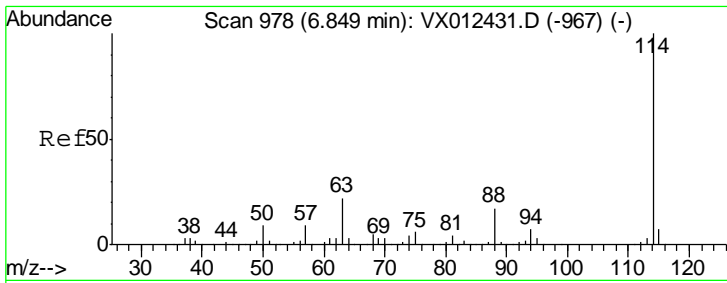


#33  
 1,2-Dichloroethane-d4  
 Concen: 48.623 ug/l  
 RT: 6.06 min Scan# 848  
 Delta R.T. 0.01 min  
 Lab File: VX012728.D  
 Acq: 01 Oct 2019 13:17

Tgt Ion	Resp	Lower	Upper
65	115714		
67	51.4	0.0	101.2



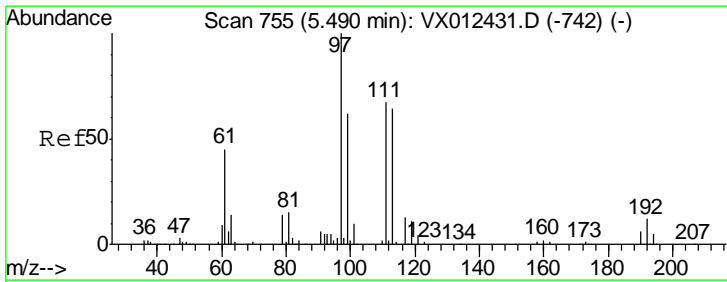
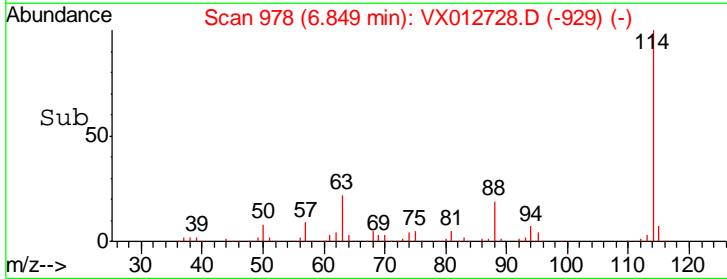
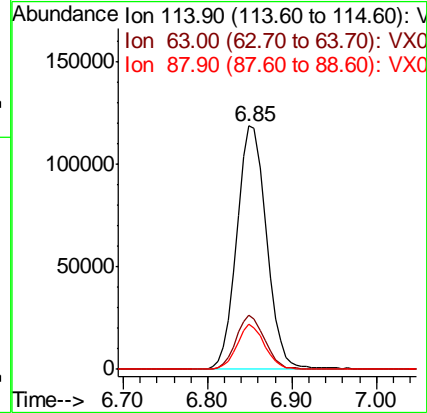
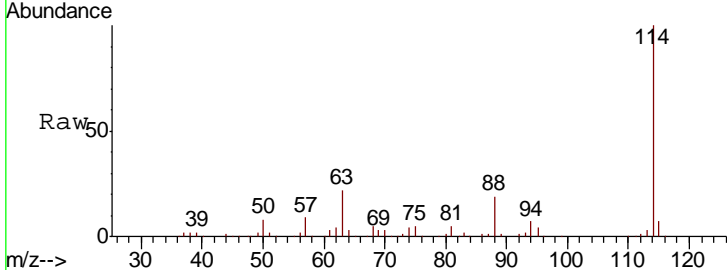




#34  
 1,4-Difluorobenzene  
 Concen: 50.000 ug/l  
 RT: 6.85 min Scan# 978  
 Delta R.T. 0.00 min  
 Lab File: VX012728.D  
 Acq: 01 Oct 2019 13:17

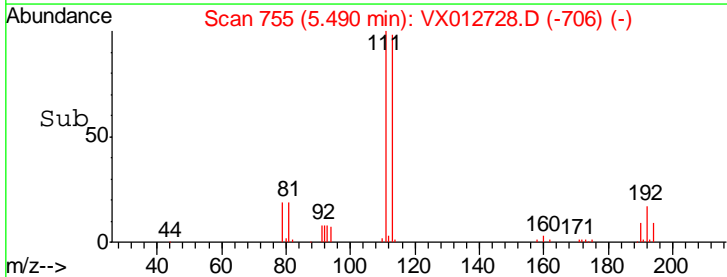
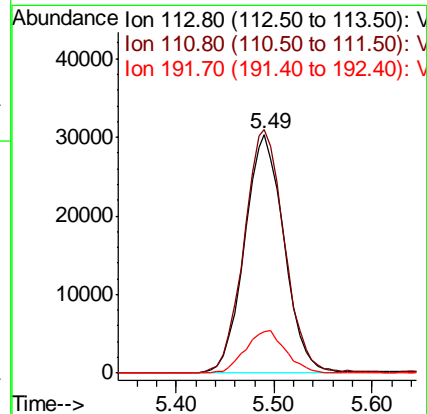
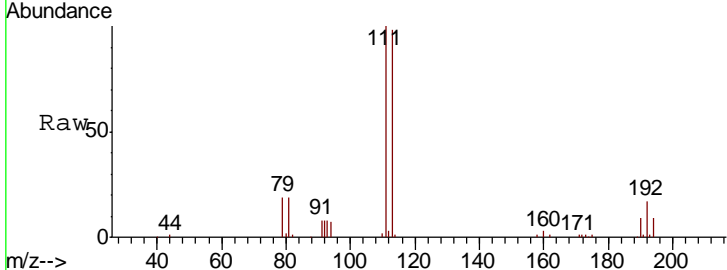
Instrument :  
 MSVOA\_X  
 ClientSampled :  
 SA-PZ1221-20190926

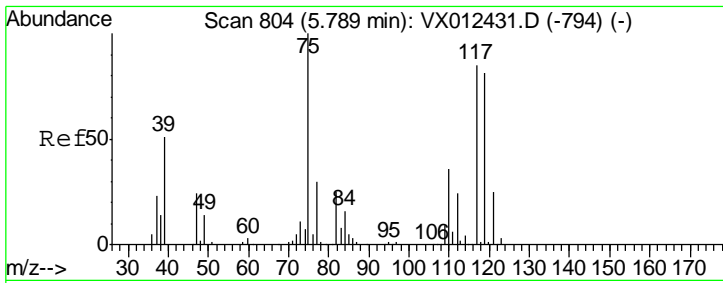
Tgt Ion	Resp	Lower	Upper
114	283935		
63	22.0	0.0	43.2
88	18.5	0.0	33.2



#35  
 Dibromofluoromethane  
 Concen: 50.377 ug/l  
 RT: 5.49 min Scan# 755  
 Delta R.T. 0.00 min  
 Lab File: VX012728.D  
 Acq: 01 Oct 2019 13:17

Tgt Ion	Resp	Lower	Upper
113	85185		
111	104.4	83.4	125.2
192	18.1	14.4	21.6

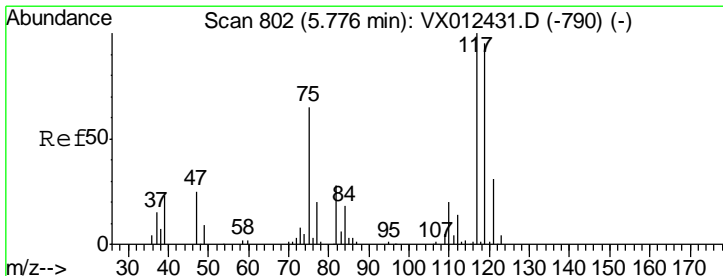
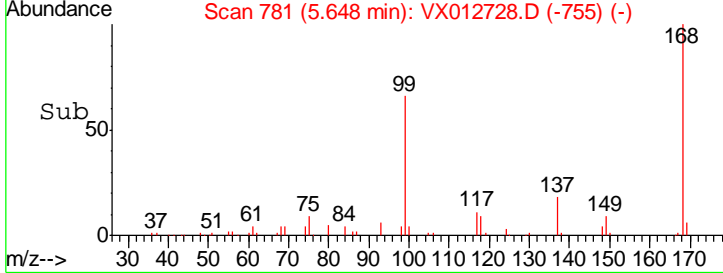
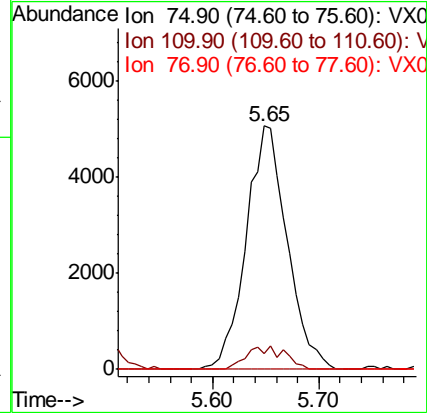
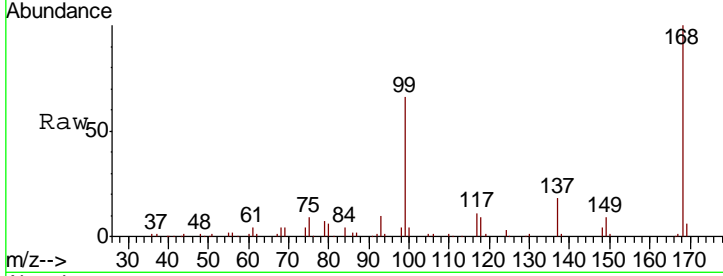




#36  
 1,1-Dichloropropene  
 Concen: 4.981 ug/l  
 RT: 5.65 min Scan# 781  
 Delta R.T. -0.14 min  
 Lab File: VX012728.D  
 Acq: 01 Oct 2019 13:17

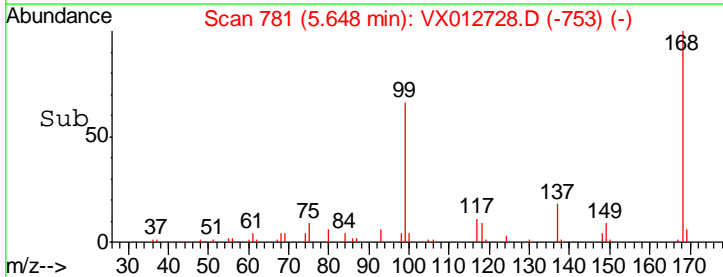
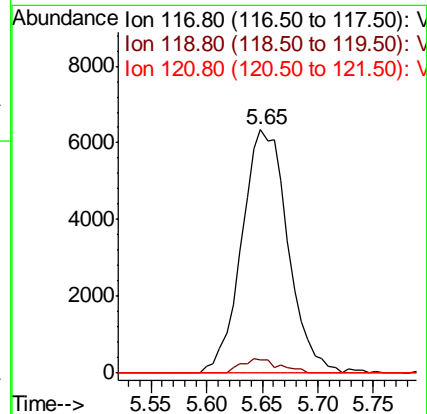
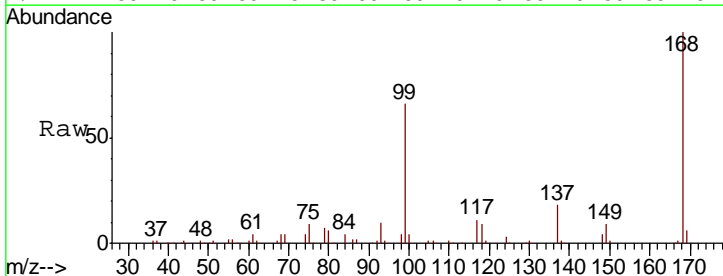
Instrument :  
 MSVOA\_X  
 ClientSampled :  
 SA-PZ1221-20190926

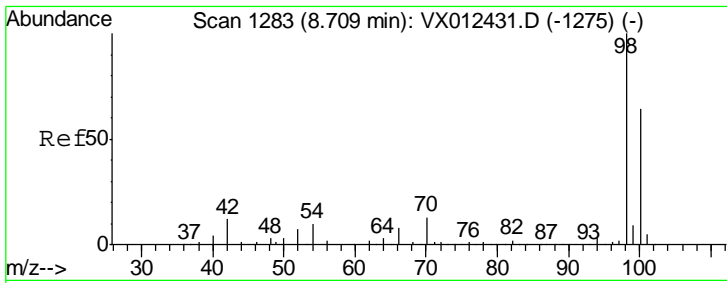
Tgt Ion	Resp	Lower	Upper
75	13631		
110	8.9	16.7	50.0#
77	0.0	24.2	36.2#



#38  
 Carbon Tetrachloride  
 Concen: 6.579 ug/l  
 RT: 5.65 min Scan# 781  
 Delta R.T. -0.13 min  
 Lab File: VX012728.D  
 Acq: 01 Oct 2019 13:17

Tgt Ion	Resp	Lower	Upper
117	18290		
119	5.2	75.7	113.5#
121	0.0	24.2	36.4#

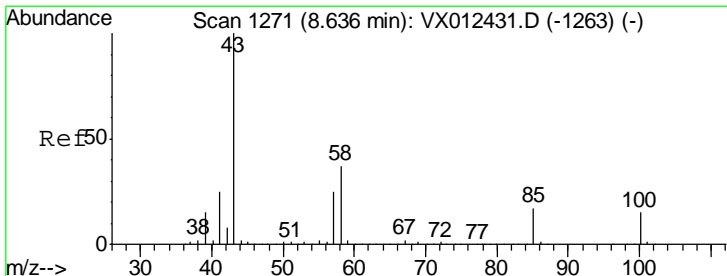
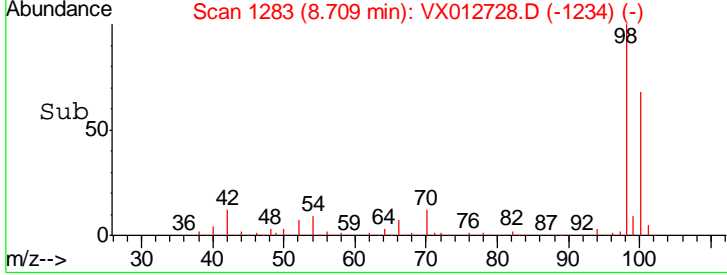
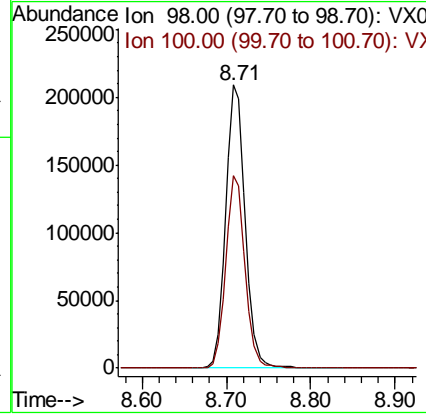
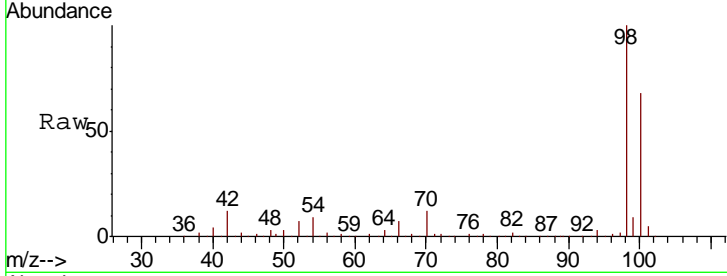




#50  
 Toluene-d8  
 Concen: 51.353 ug/l  
 RT: 8.71 min Scan# 1283  
 Delta R.T. 0.00 min  
 Lab File: VX012728.D  
 Acq: 01 Oct 2019 13:17

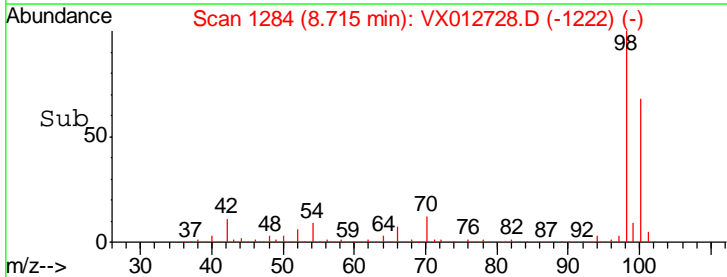
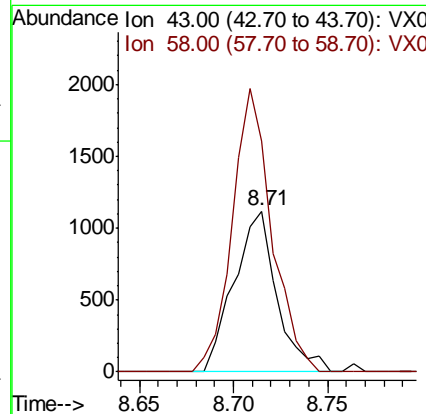
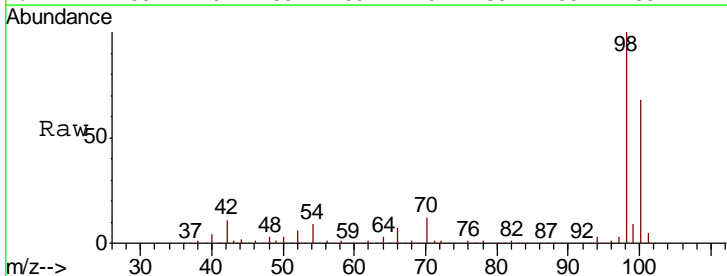
**Instrument :**  
 MSVOA\_X  
**ClientSampled :**  
 SA-PZ1221-20190926

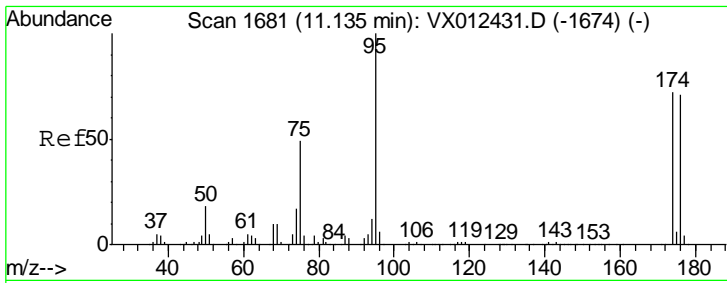
Tot Ion: 98 Resp: 334410  
 Ion Ratio Lower Upper  
 98 100  
 100 67.3 53.4 80.2



#51  
 4-Methyl-2-Pentanone  
 Concen: 0.537 ug/l  
 RT: 8.71 min Scan# 1284  
 Delta R.T. 0.08 min  
 Lab File: VX012728.D  
 Acq: 01 Oct 2019 13:17

Tgt Ion: 43 Resp: 1773  
 Ion Ratio Lower Upper  
 43 100  
 58 161.5 29.8 44.6#

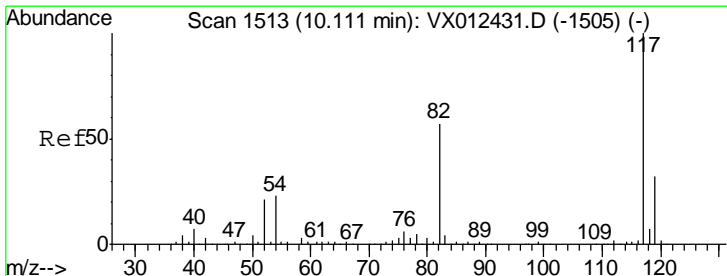
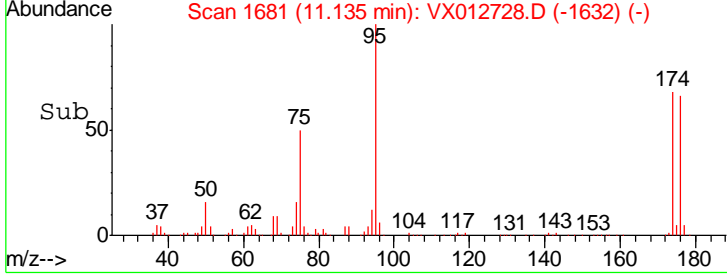
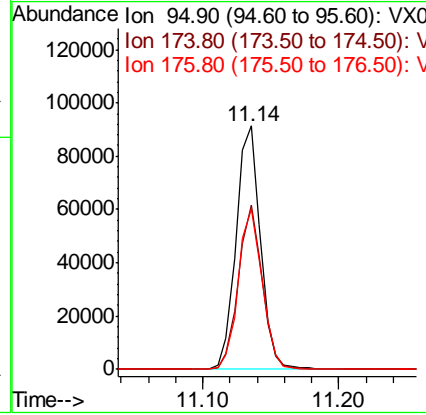
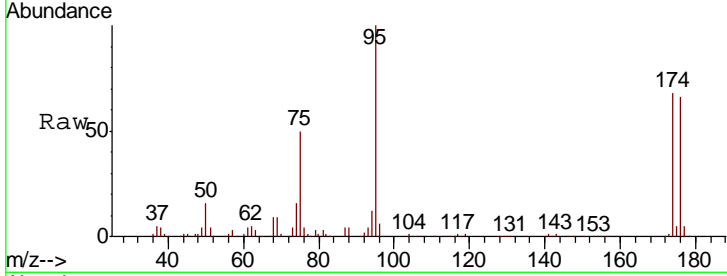




#62  
 4-Bromofluorobenzene  
 Concen: 44.340 ug/l  
 RT: 11.14 min Scan# 1681  
 Delta R.T. 0.00 min  
 Lab File: VX012728.D  
 Acq: 01 Oct 2019 13:17

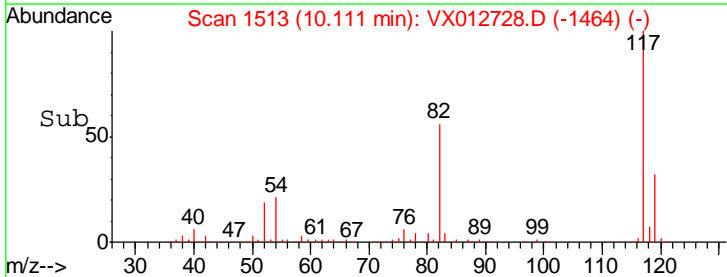
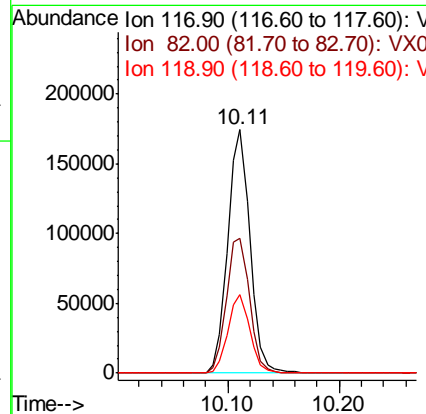
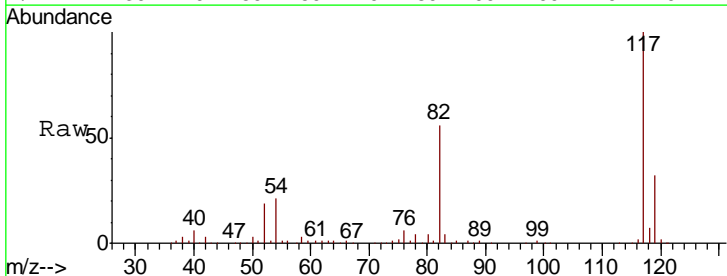
Instrument :  
 MSVOA\_X  
 ClientSampleId :  
 SA-PZ1221-20190926

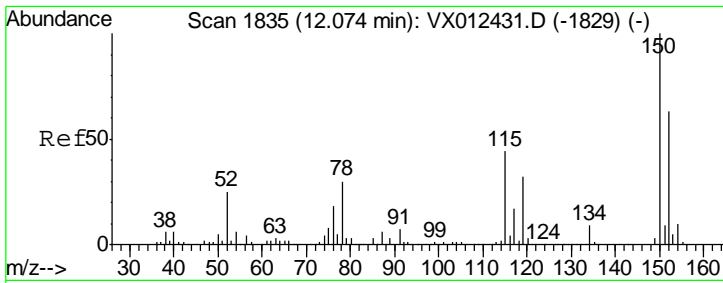
Tgt Ion	Resp	Lower	Upper
95	113535		
174	66.4	0.0	140.0
176	65.2	0.0	135.4



#63  
 Chlorobenzene-d5  
 Concen: 50.000 ug/l  
 RT: 10.11 min Scan# 1513  
 Delta R.T. 0.00 min  
 Lab File: VX012728.D  
 Acq: 01 Oct 2019 13:17

Tgt Ion	Resp	Lower	Upper
117	241350		
82	55.6	45.9	68.9
119	32.4	25.3	37.9

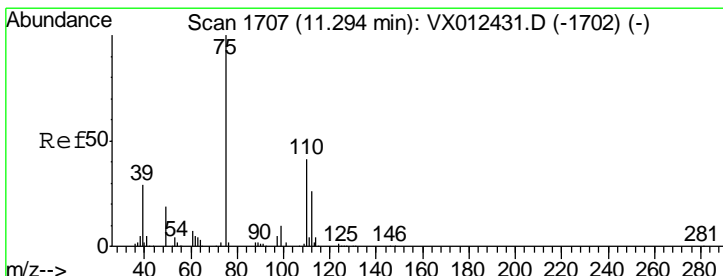
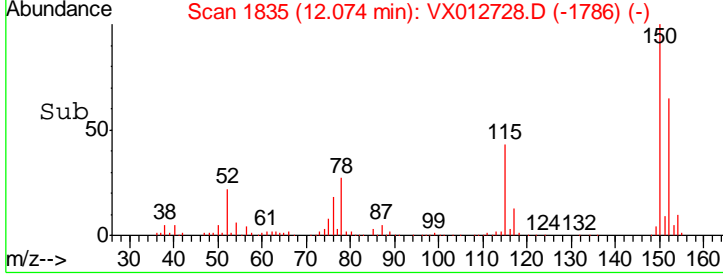
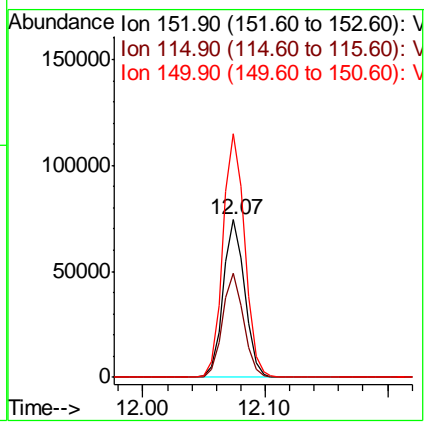
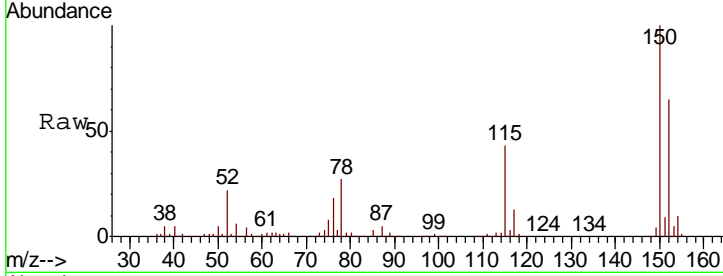




#72  
 1,4-Dichlorobenzene-d4  
 Concen: 50.000 ug/l  
 RT: 12.07 min Scan# 1835  
 Delta R.T. 0.00 min  
 Lab File: VX012728.D  
 Acq: 01 Oct 2019 13:17

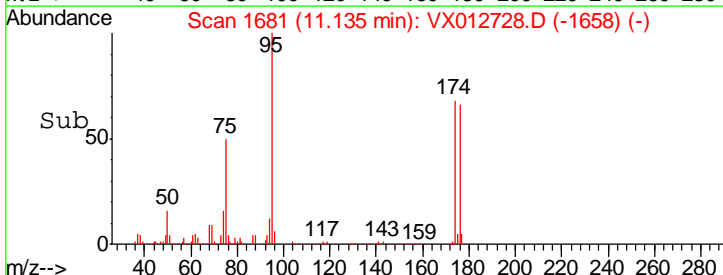
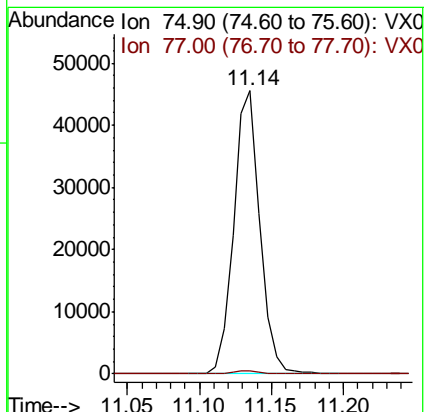
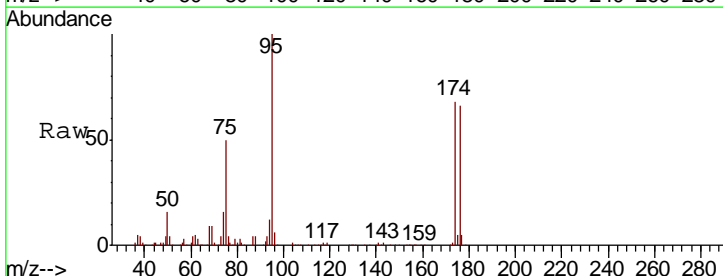
Instrument : MSVOA\_X  
 ClientSampled : SA-PZ1221-20190926

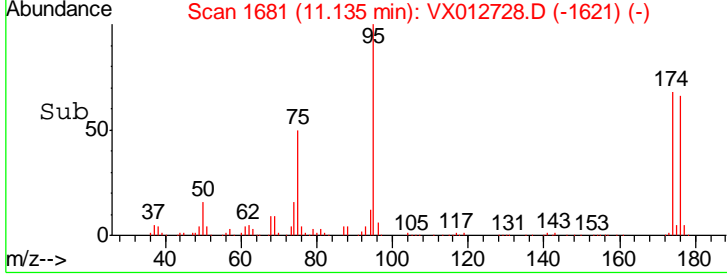
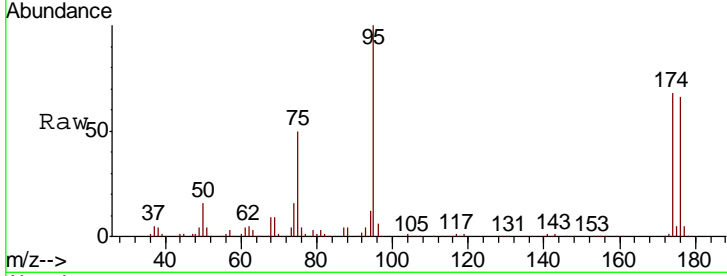
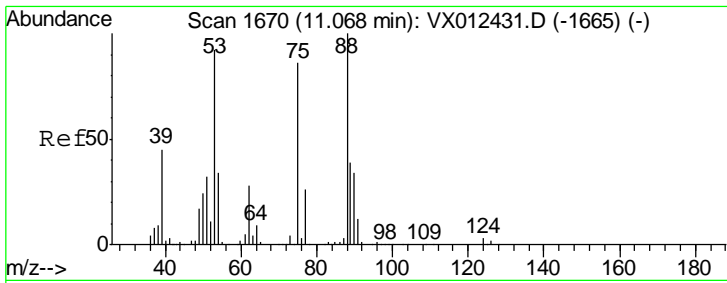
Tgt Ion	Resp	Lower	Upper
152	100		
115	65.3	44.1	132.3
150	157.5	0.0	343.8



#76  
 1,2,3-Trichloropropane  
 Concen: 24.195 ug/l  
 RT: 11.14 min Scan# 1681  
 Delta R.T. -0.16 min  
 Lab File: VX012728.D  
 Acq: 01 Oct 2019 13:17

Tgt Ion	Resp	Lower	Upper
75	100		
77	1.2	19.7	59.0#





#81  
 trans-1,4-Dichloro-2-butene  
 Concen: 69.337 ug/l  
 RT: 11.14 min Scan# 1681  
 Delta R.T. 0.07 min  
 Lab File: VX012728.D  
 Acq: 01 Oct 2019 13:17

Instrument : MSVOA\_X  
 ClientSampleId : SA-PZ1221-20190926

Tot Ion	75	Resp	57759
Ion Ratio	Lower	Upper	
75	100		
53	0.0	83.6	125.4#
89	0.0	36.3	54.5#

