

Data Path : Z:\voasrv\HPCHEM1\MSVOA_X\Data\VX100125\
 Data File : VX047932.D
 Acq On : 01 Oct 2025 12:22
 Operator : JC/MD
 Sample : Q3193-17DL 10X
 Misc : 5.0mL/MSVOA_X/WATER
 ALS Vial : 9 Sample Multiplier: 1

Instrument :
 MSVOA_X
 ClientSampleId :
 RE103D1-20250923DL

Quant Time: Oct 03 01:19:19 2025
 Quant Method : Z:\voasrv\HPCHEM1\MSVOA_X\Method\82X091625W.M
 Quant Title : SW846 8260
 QLast Update : Wed Sep 17 06:39:58 2025
 Response via : Initial Calibration

Compound	R.T.	QIon	Response	Conc	Units	Dev(Min)

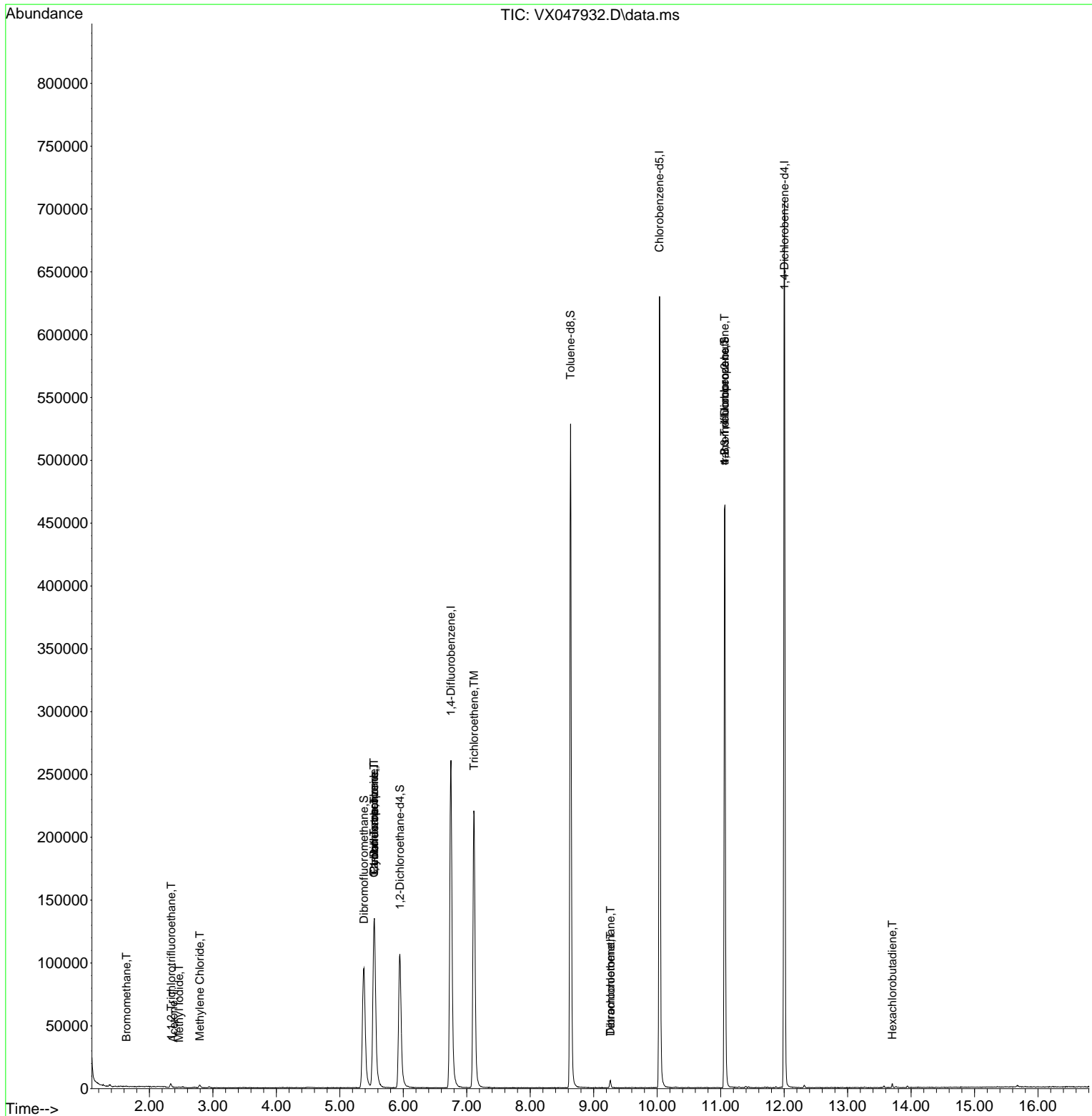
Internal Standards						
1) Pentafluorobenzene	5.544	168	134999	50.000	ug/l	0.00
34) 1,4-Difluorobenzene	6.751	114	282843	50.000	ug/l	0.00
63) Chlorobenzene-d5	10.037	117	293609	50.000	ug/l	0.00
72) 1,4-Dichlorobenzene-d4	12.006	152	148894	50.000	ug/l	0.00
System Monitoring Compounds						
33) 1,2-Dichloroethane-d4	5.946	65	114945	53.492	ug/l	0.00
Spiked Amount	50.000	Range 78 - 117	Recovery	=	106.980%	
35) Dibromofluoromethane	5.379	113	94476	49.805	ug/l	0.00
Spiked Amount	50.000	Range 75 - 124	Recovery	=	99.620%	
50) Toluene-d8	8.635	98	321946	49.050	ug/l	0.00
Spiked Amount	50.000	Range 92 - 112	Recovery	=	98.100%	
62) 4-Bromofluorobenzene	11.061	95	138801	55.720	ug/l	0.00
Spiked Amount	50.000	Range 83 - 123	Recovery	=	111.440%	
Target Compounds						
						Qvalue
5) Bromomethane	1.636	94	249	0.218	ug/l #	57
9) 1,1,2-Trichlorotrifluo...	2.343	101	1288	0.825	ug/l	94
10) Methyl Iodide	2.465	142	867	0.356	ug/l #	78
16) Acetone	2.380	43	480	0.514	ug/l #	74
20) Methylene Chloride	2.794	84	1099	0.556	ug/l	87
31) Cyclohexane	5.544	56	3218	1.133	ug/l #	1
36) 1,1-Dichloropropene	5.538	75	11747	4.238	ug/l #	47
38) Carbon Tetrachloride	5.538	117	14852	4.932	ug/l #	18
44) Trichloroethene	7.117	130	93082	45.733	ug/l	92
60) Dibromochloromethane	9.263	129	1074	0.466	ug/l #	11
64) Tetrachloroethene	9.263	164	1118	0.584	ug/l #	85
76) 1,2,3-Trichloropropane	11.061	75	71575	23.742	ug/l #	39
81) trans-1,4-Dichloro-2-b...	11.061	75	71575	60.547	ug/l #	8
94) Hexachlorobutadiene	13.707	225	440	0.404	ug/l	93

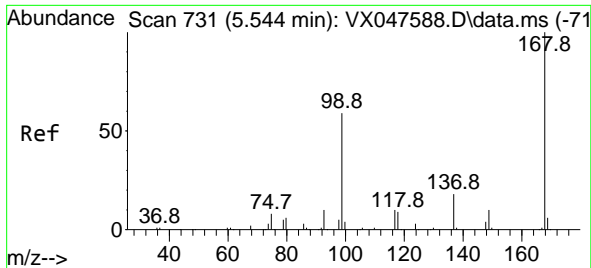
(#) = qualifier out of range (m) = manual integration (+) = signals summed

Data Path : Z:\voasrv\HPCHEM1\MSVOA_X\Data\VX100125\
 Data File : VX047932.D
 Acq On : 01 Oct 2025 12:22
 Operator : JC/MD
 Sample : Q3193-17DL 10X
 Misc : 5.0mL/MSVOA_X/WATER
 ALS Vial : 9 Sample Multiplier: 1

Instrument :
 MSVOA_X
 ClientSampleId :
 RE103D1-20250923DL

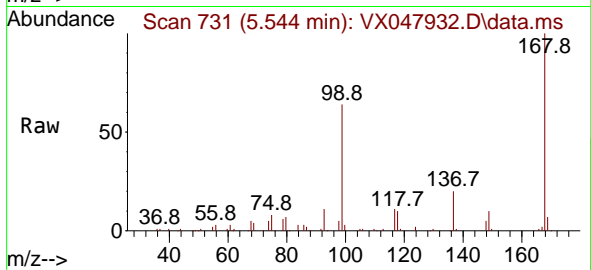
Quant Time: Oct 03 01:19:19 2025
 Quant Method : Z:\voasrv\HPCHEM1\MSVOA_X\Method\82X091625W.M
 Quant Title : SW846 8260
 QLast Update : Wed Sep 17 06:39:58 2025
 Response via : Initial Calibration



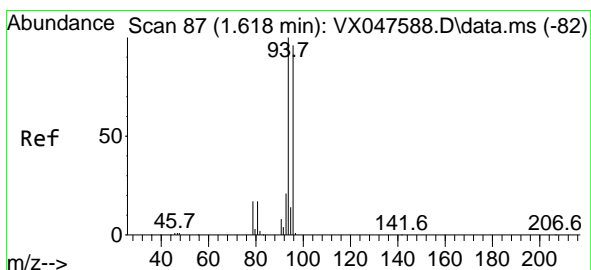
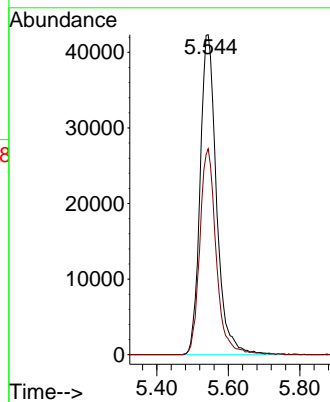
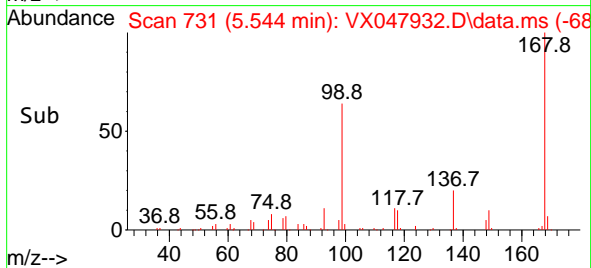


#1
 Pentafluorobenzene
 Concen: 50.000 ug/l
 RT: 5.544 min Scan# 71
 Delta R.T. -0.000 min
 Lab File: VX047932.D
 Acq: 01 Oct 2025 12:22

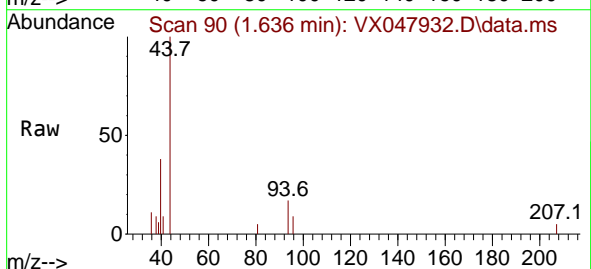
Instrument : MSVOA_X
 ClientSampleId : RE103D1-20250923DL



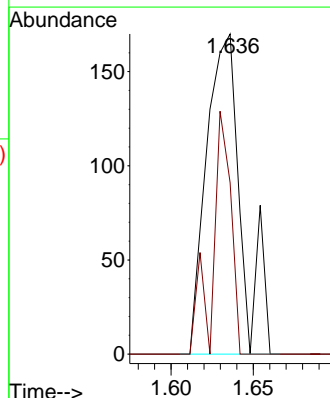
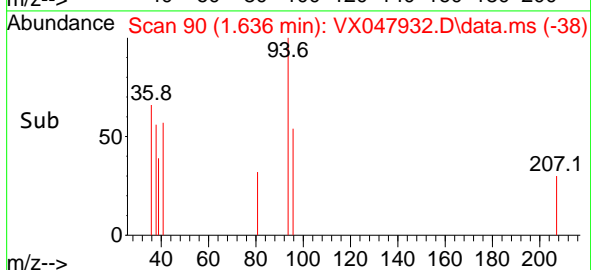
Tgt Ion:168 Resp: 134999
 Ion Ratio Lower Upper
 168 100
 99 64.3 48.8 73.2

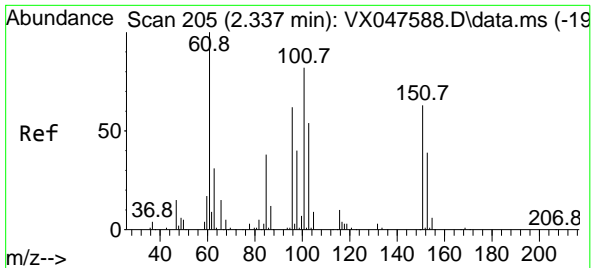


#5
 Bromomethane
 Concen: 0.218 ug/l
 RT: 1.636 min Scan# 90
 Delta R.T. 0.018 min
 Lab File: VX047932.D
 Acq: 01 Oct 2025 12:22



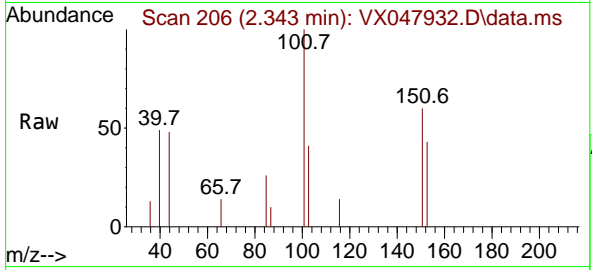
Tgt Ion: 94 Resp: 249
 Ion Ratio Lower Upper
 94 100
 96 53.5 76.6 115.0#





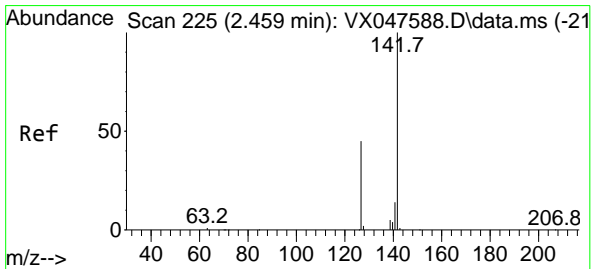
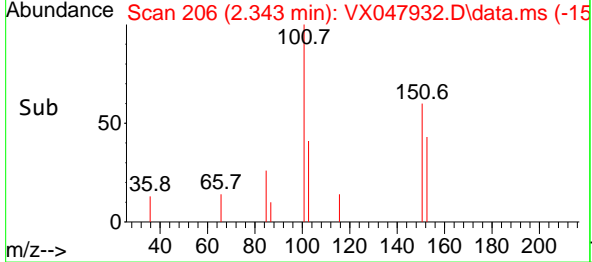
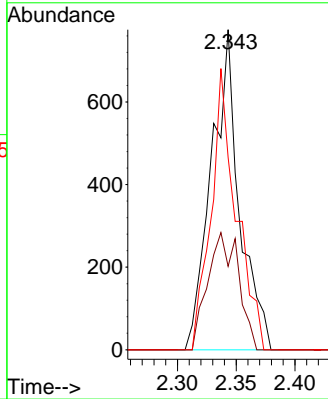
#9
 1,1,2-Trichlorotrifluoroethane
 Concen: 0.825 ug/l
 RT: 2.343 min Scan# 206
 Delta R.T. 0.006 min
 Lab File: VX047932.D
 Acq: 01 Oct 2025 12:22

Instrument : MSVOA_X
 ClientSampleId : RE103D1-20250923DL



Tgt Ion:101 Resp: 1288

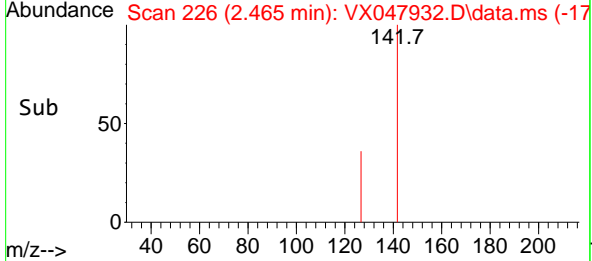
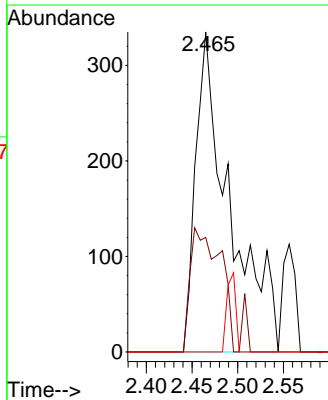
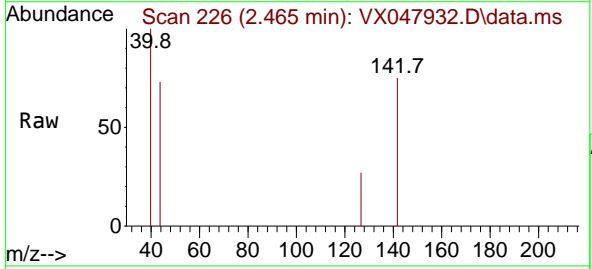
Ion	Ratio	Lower	Upper
101	100		
85	40.0	35.5	53.3
151	78.7	59.4	89.0

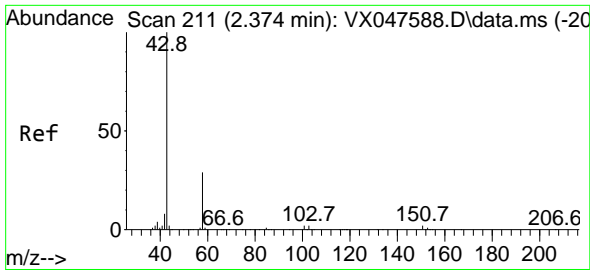


#10
 Methyl Iodide
 Concen: 0.356 ug/l
 RT: 2.465 min Scan# 226
 Delta R.T. 0.006 min
 Lab File: VX047932.D
 Acq: 01 Oct 2025 12:22

Tgt Ion:142 Resp: 867

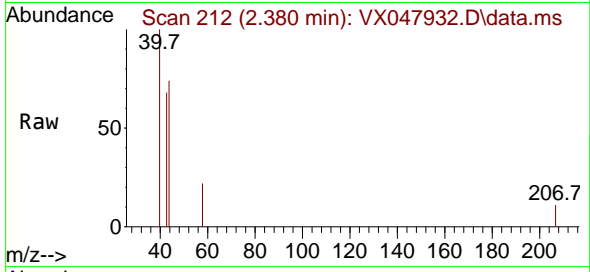
Ion	Ratio	Lower	Upper
142	100		
127	34.5	37.2	55.8#
141	0.0	11.4	17.0#



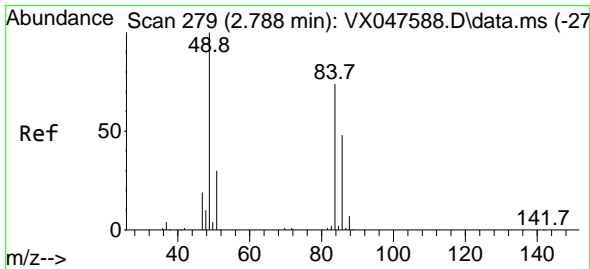
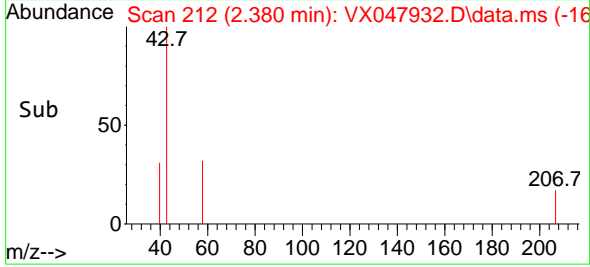
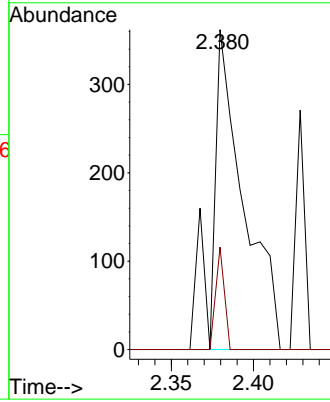


#16
 Acetone
 Concen: 0.514 ug/l
 RT: 2.380 min Scan# 211
 Delta R.T. 0.006 min
 Lab File: VX047932.D
 Acq: 01 Oct 2025 12:22

Instrument :
 MSVOA_X
 ClientSampleId :
 RE103D1-20250923DL

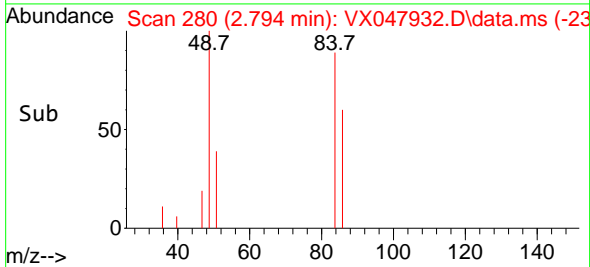
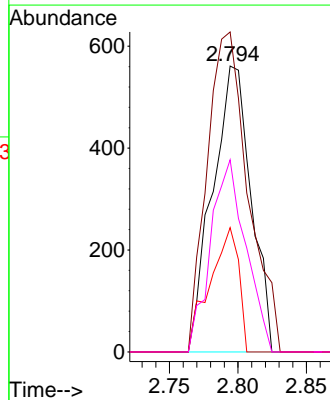
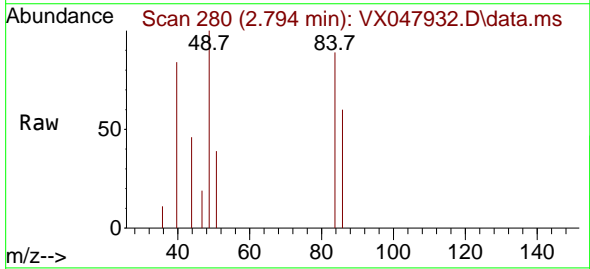


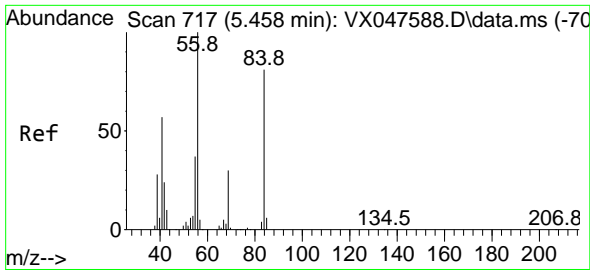
Tgt Ion: 43 Resp: 480
 Ion Ratio Lower Upper
 43 100
 58 15.3 23.4 35.0#



#20
 Methylene Chloride
 Concen: 0.556 ug/l
 RT: 2.794 min Scan# 280
 Delta R.T. 0.006 min
 Lab File: VX047932.D
 Acq: 01 Oct 2025 12:22

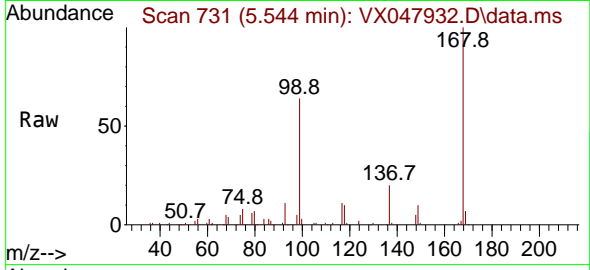
Tgt Ion: 84 Resp: 1099
 Ion Ratio Lower Upper
 84 100
 49 111.9 108.6 162.8
 51 43.5 32.6 48.8
 86 67.2 52.0 78.0



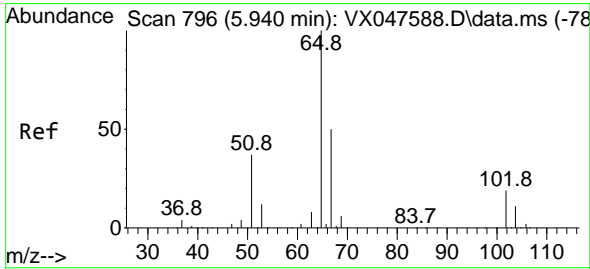
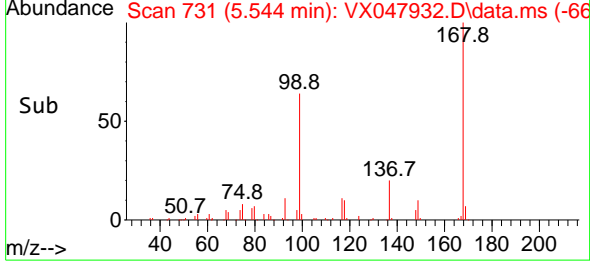
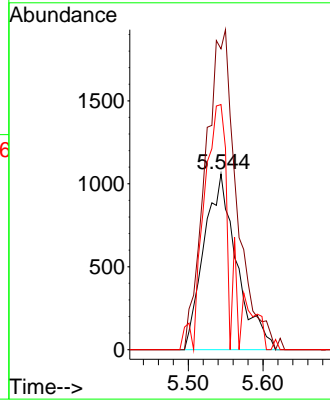


#31
 Cyclohexane
 Concen: 1.133 ug/l
 RT: 5.544 min Scan# 717
 Delta R.T. 0.085 min
 Lab File: VX047932.D
 Acq: 01 Oct 2025 12:22

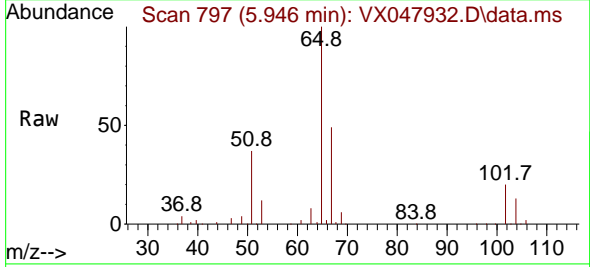
Instrument :
 MSVOA_X
ClientSampleId :
 RE103D1-20250923DL



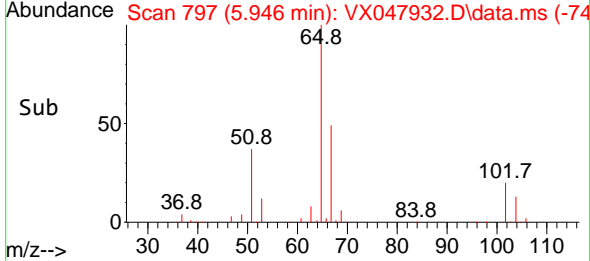
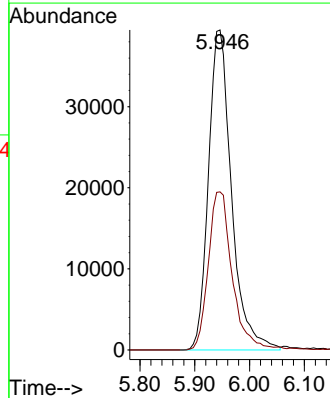
Tgt Ion: 56 Resp: 3218
 Ion Ratio Lower Upper
 56 100
 69 171.2 23.8 35.8#
 84 139.6 64.6 97.0#

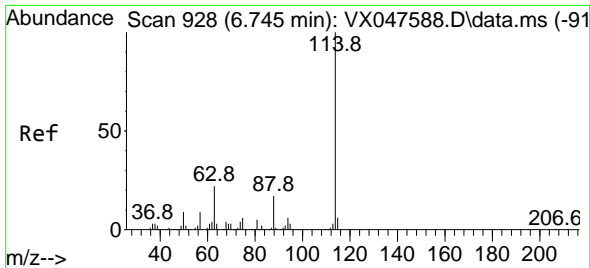


#33
 1,2-Dichloroethane-d4
 Concen: 53.492 ug/l
 RT: 5.946 min Scan# 797
 Delta R.T. 0.006 min
 Lab File: VX047932.D
 Acq: 01 Oct 2025 12:22



Tgt Ion: 65 Resp: 114945
 Ion Ratio Lower Upper
 65 100
 67 51.2 0.0 103.0

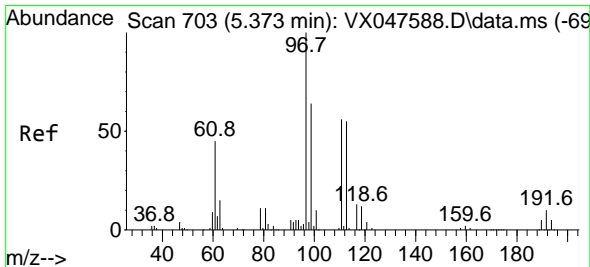
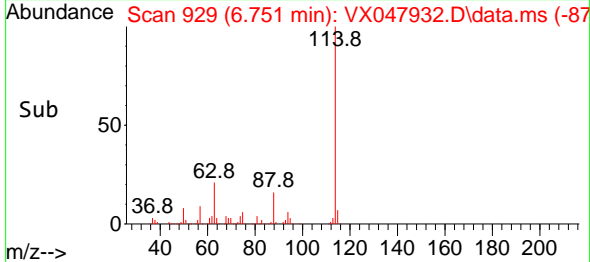
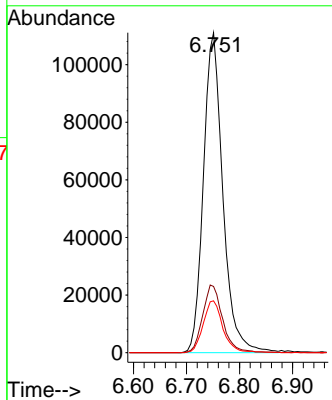
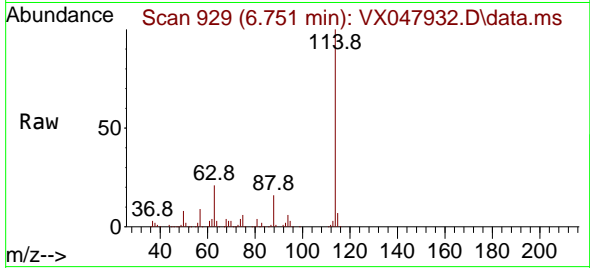




#34
 1,4-Difluorobenzene
 Concen: 50.000 ug/l
 RT: 6.751 min Scan# 91
 Delta R.T. 0.006 min
 Lab File: VX047932.D
 Acq: 01 Oct 2025 12:22

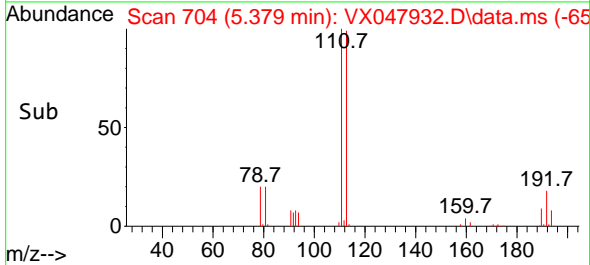
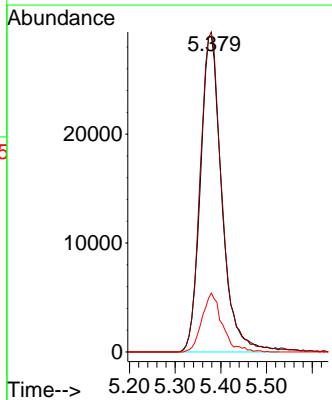
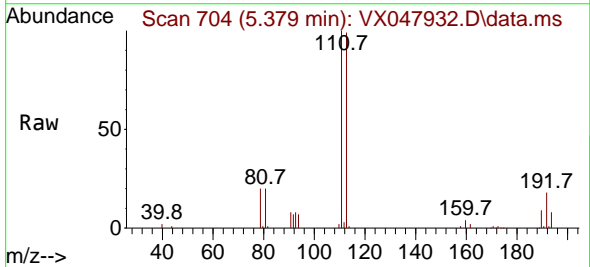
Instrument : MSVOA_X
 ClientSampleId : RE103D1-20250923DL

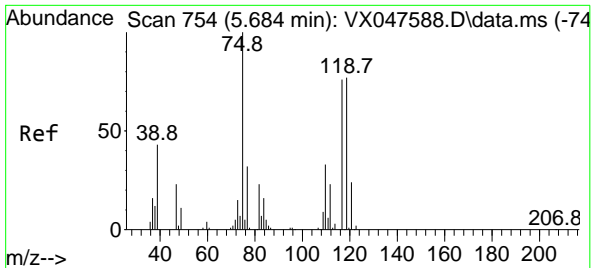
Tgt Ion:114 Resp: 282843
 Ion Ratio Lower Upper
 114 100
 63 20.7 0.0 44.0
 88 16.2 0.0 34.2



#35
 Dibromofluoromethane
 Concen: 49.805 ug/l
 RT: 5.379 min Scan# 704
 Delta R.T. 0.006 min
 Lab File: VX047932.D
 Acq: 01 Oct 2025 12:22

Tgt Ion:113 Resp: 94476
 Ion Ratio Lower Upper
 113 100
 111 101.8 80.9 121.3
 192 17.6 14.2 21.4

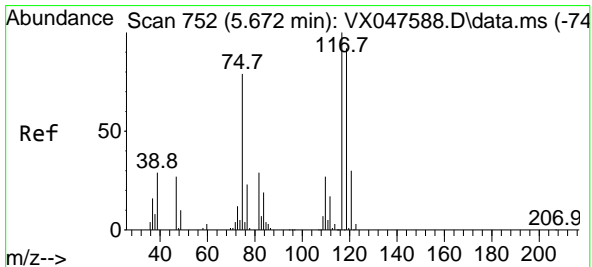
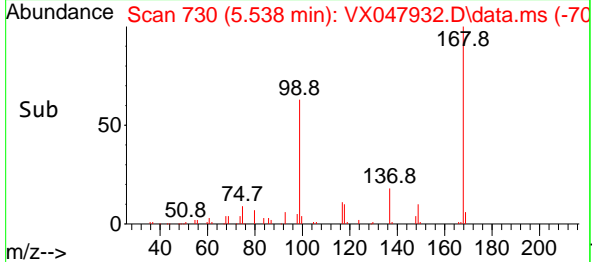
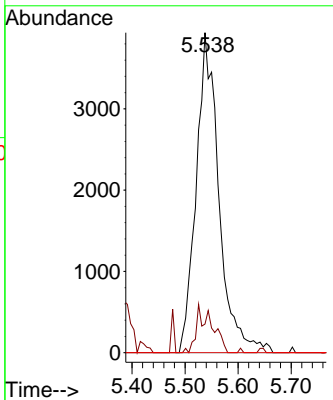
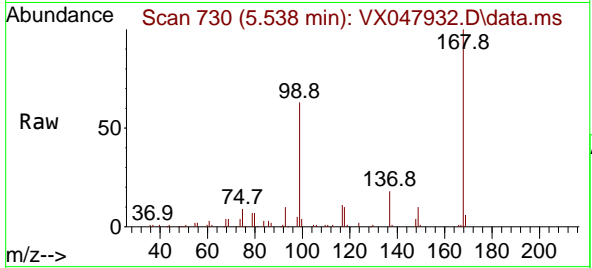




#36
 1,1-Dichloropropene
 Concen: 4.238 ug/l
 RT: 5.538 min Scan# 710
 Delta R.T. -0.146 min
 Lab File: VX047932.D
 Acq: 01 Oct 2025 12:22

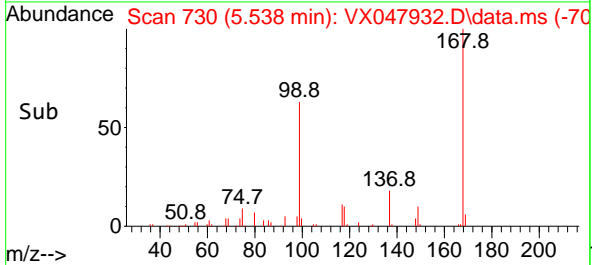
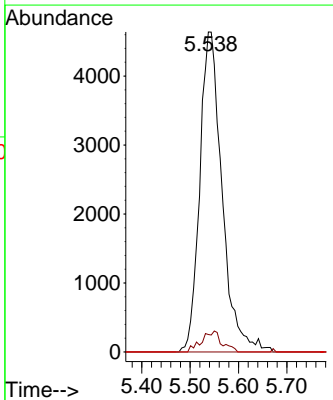
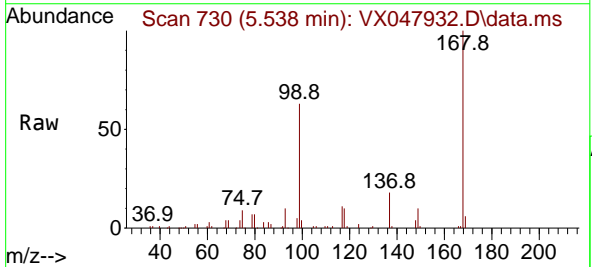
Instrument : MSVOA_X
 ClientSampleId : RE103D1-20250923DL

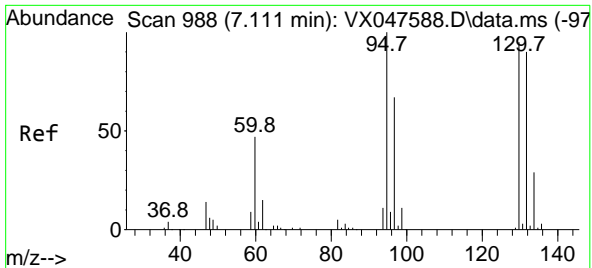
Tgt Ion	Resp	Lower	Upper
75	11747		
75	100		
110	5.1	16.7	50.1#
77	0.0	24.3	36.5#



#38
 Carbon Tetrachloride
 Concen: 4.932 ug/l
 RT: 5.538 min Scan# 730
 Delta R.T. -0.134 min
 Lab File: VX047932.D
 Acq: 01 Oct 2025 12:22

Tgt Ion	Resp	Lower	Upper
117	14852		
117	100		
119	5.4	73.4	110.2#
121	0.0	23.8	35.6#

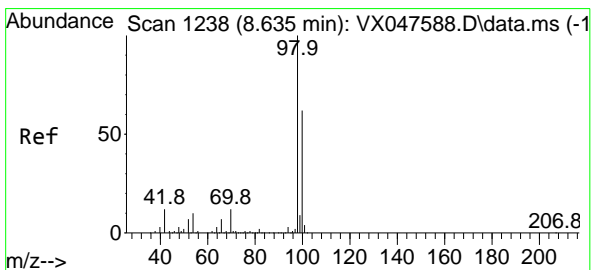
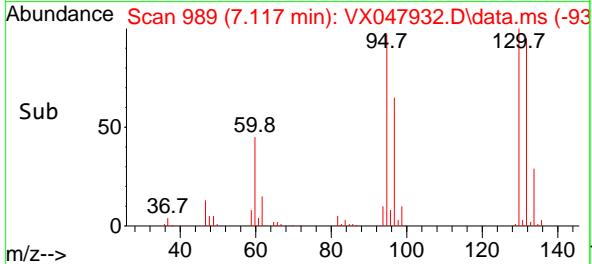
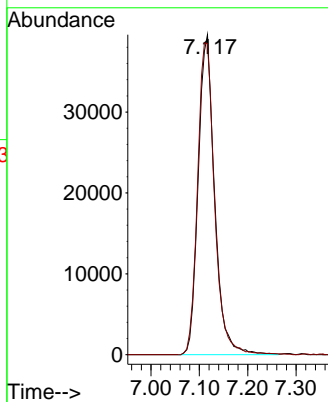
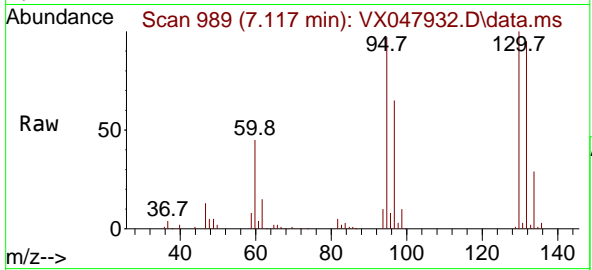




#44
 Trichloroethene
 Concen: 45.733 ug/l
 RT: 7.117 min Scan# 91
 Delta R.T. 0.006 min
 Lab File: VX047932.D
 Acq: 01 Oct 2025 12:22

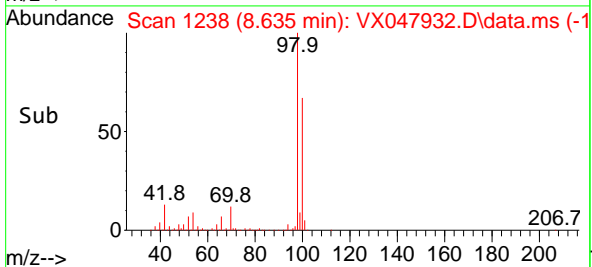
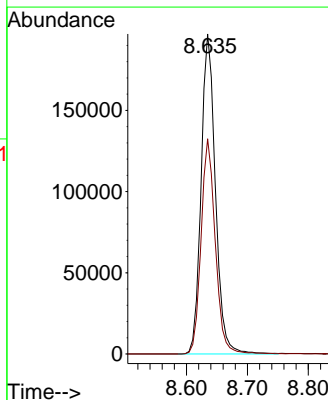
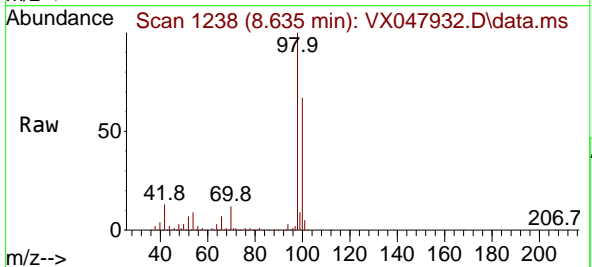
Instrument : MSVOA_X
 ClientSampleId : RE103D1-20250923DL

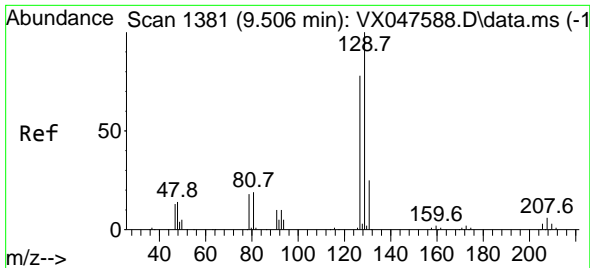
Tgt Ion:130 Resp: 93082
 Ion Ratio Lower Upper
 130 100
 95 97.2 0.0 210.8



#50
 Toluene-d8
 Concen: 49.050 ug/l
 RT: 8.635 min Scan# 1238
 Delta R.T. -0.000 min
 Lab File: VX047932.D
 Acq: 01 Oct 2025 12:22

Tgt Ion: 98 Resp: 321946
 Ion Ratio Lower Upper
 98 100
 100 66.8 53.0 79.4

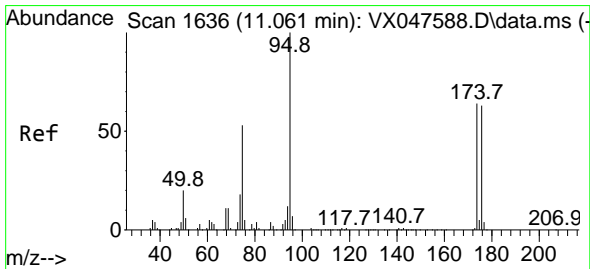
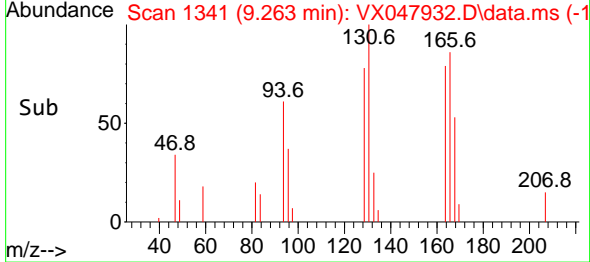
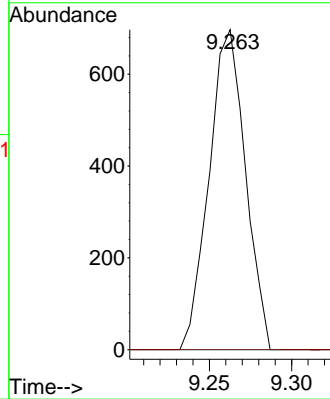
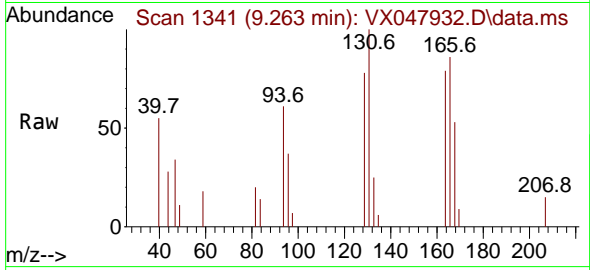




#60
 Dibromochloromethane
 Concen: 0.466 ug/l
 RT: 9.263 min Scan# 11
 Delta R.T. -0.244 min
 Lab File: VX047932.D
 Acq: 01 Oct 2025 12:22

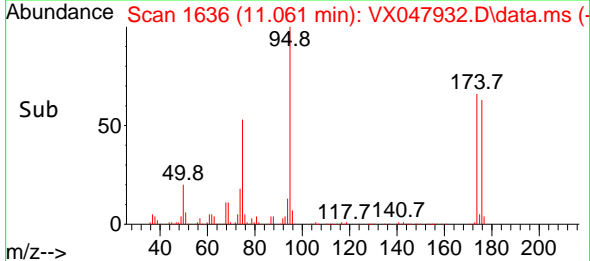
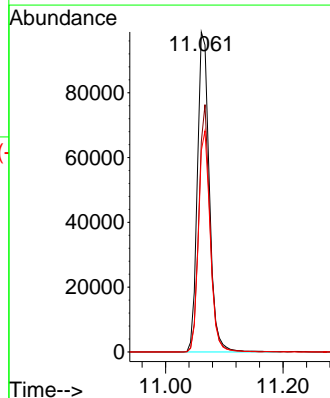
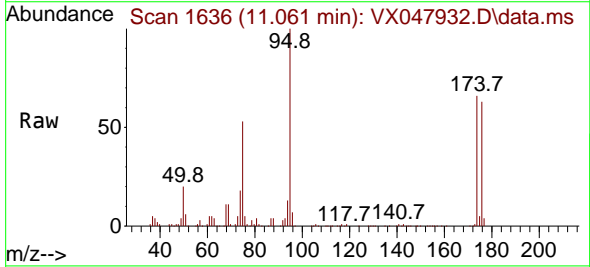
Instrument : MSVOA_X
 ClientSampleId : RE103D1-20250923DL

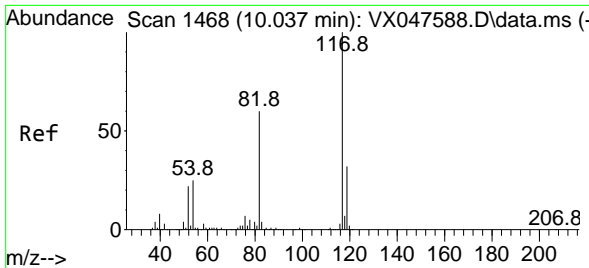
Tgt Ion:129 Resp: 1074
 Ion Ratio Lower Upper
 129 100
 127 0.0 38.4 115.2#



#62
 4-Bromofluorobenzene
 Concen: 55.720 ug/l
 RT: 11.061 min Scan# 1636
 Delta R.T. -0.000 min
 Lab File: VX047932.D
 Acq: 01 Oct 2025 12:22

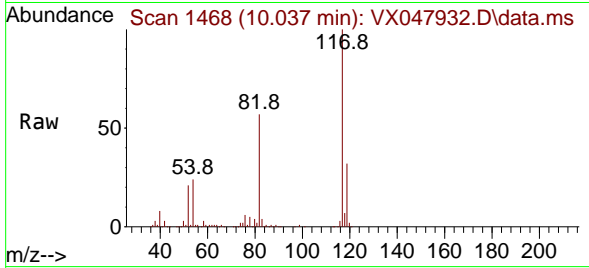
Tgt Ion: 95 Resp: 138801
 Ion Ratio Lower Upper
 95 100
 174 72.8 0.0 141.6
 176 68.0 0.0 138.4





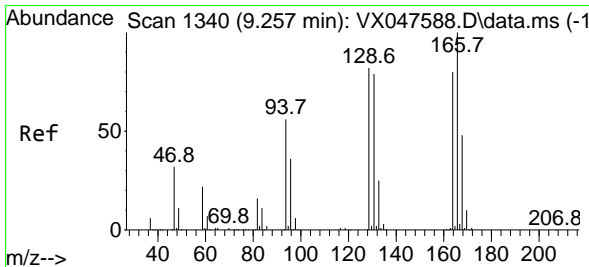
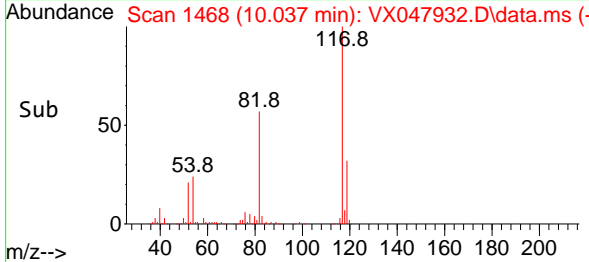
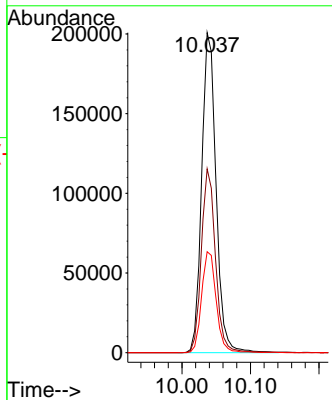
#63
 Chlorobenzene-d5
 Concen: 50.000 ug/l
 RT: 10.037 min Scan# 1468
 Delta R.T. -0.000 min
 Lab File: VX047932.D
 Acq: 01 Oct 2025 12:22

Instrument : MSVOA_X
 ClientSampleId : RE103D1-20250923DL



Tgt Ion:117 Resp: 293609

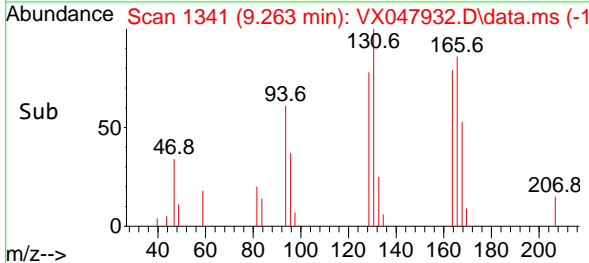
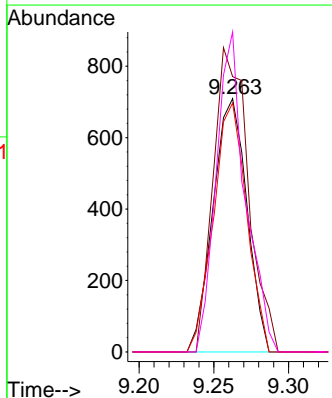
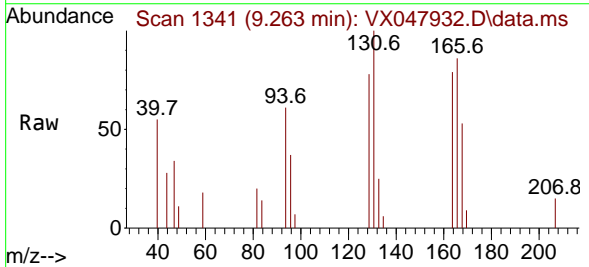
Ion	Ratio	Lower	Upper
117	100		
82	57.5	47.8	71.6
119	31.6	25.2	37.8

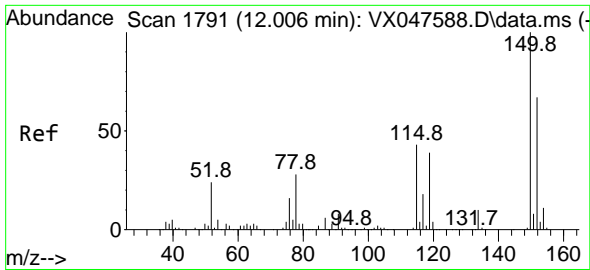


#64
 Tetrachloroethene
 Concen: 0.584 ug/l
 RT: 9.263 min Scan# 1341
 Delta R.T. 0.006 min
 Lab File: VX047932.D
 Acq: 01 Oct 2025 12:22

Tgt Ion:164 Resp: 1118

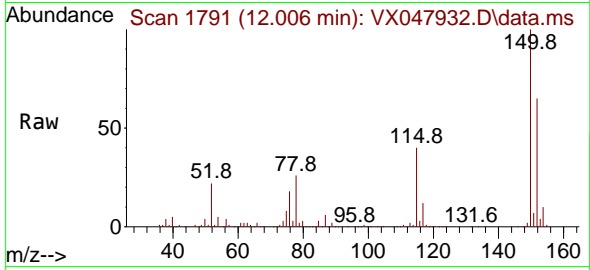
Ion	Ratio	Lower	Upper
164	100		
166	108.7	100.2	150.2
129	98.3	81.8	122.6
131	126.4	78.6	118.0#



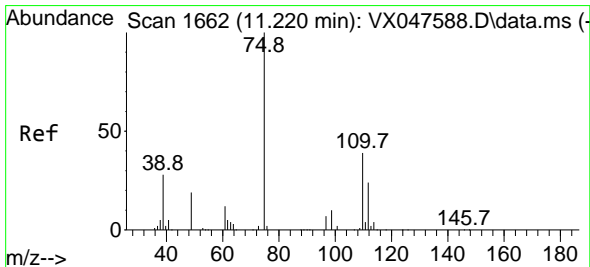
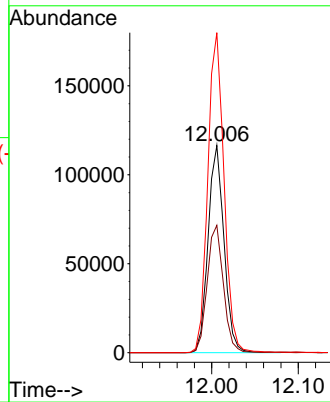
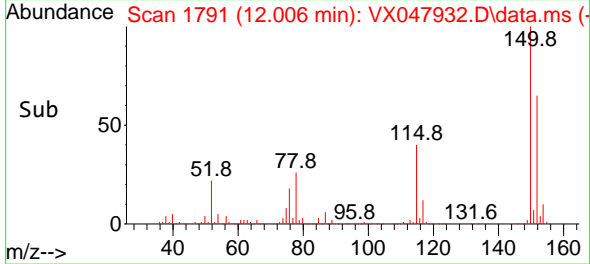


#72
 1,4-Dichlorobenzene-d4
 Concen: 50.000 ug/l
 RT: 12.006 min Scan# 1
 Delta R.T. -0.000 min
 Lab File: VX047932.D
 Acq: 01 Oct 2025 12:22

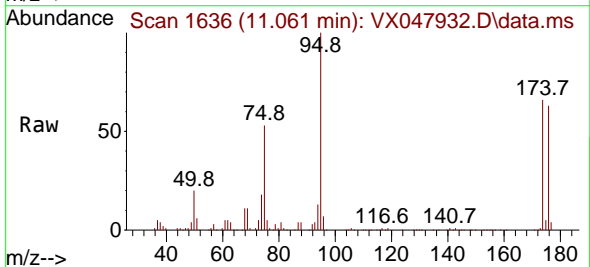
Instrument : MSVOA_X
 ClientSampleId : RE103D1-20250923DL



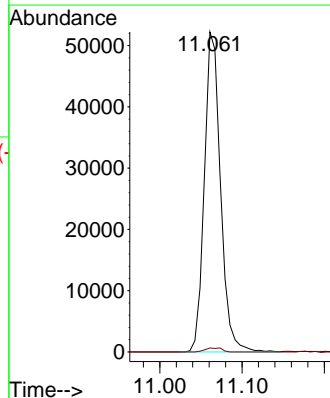
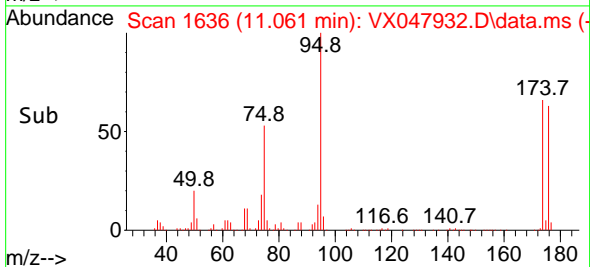
Tgt Ion:152 Resp: 148894
 Ion Ratio Lower Upper
 152 100
 115 62.5 44.9 134.5
 150 157.2 0.0 352.0

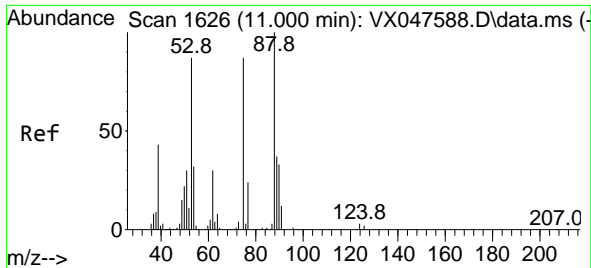


#76
 1,2,3-Trichloropropane
 Concen: 23.742 ug/l
 RT: 11.061 min Scan# 1636
 Delta R.T. -0.159 min
 Lab File: VX047932.D
 Acq: 01 Oct 2025 12:22



Tgt Ion: 75 Resp: 71575
 Ion Ratio Lower Upper
 75 100
 77 1.3 18.8 56.4#



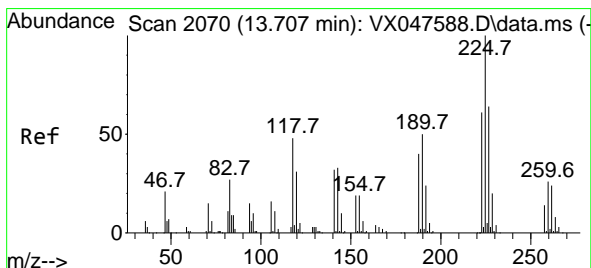
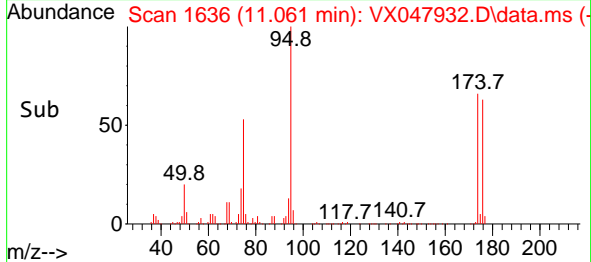
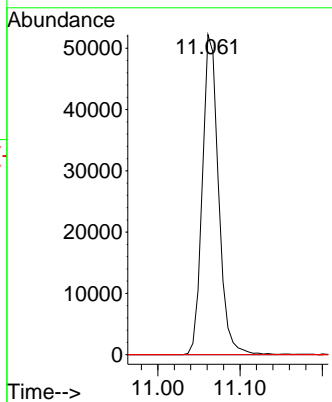
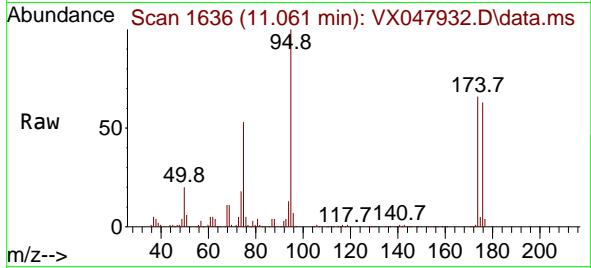


#81
 trans-1,4-Dichloro-2-butene
 Concen: 60.547 ug/l
 RT: 11.061 min Scan# 1100
 Delta R.T. 0.061 min
 Lab File: VX047932.D
 Acq: 01 Oct 2025 12:22

Instrument : MSVOA_X
 ClientSampleId : RE103D1-20250923DL

Tgt Ion: 75 Resp: 71575

Ion	Ratio	Lower	Upper
75	100		
53	0.0	83.4	125.2#
89	0.0	36.3	54.5#



#94
 Hexachlorobutadiene
 Concen: 0.404 ug/l
 RT: 13.707 min Scan# 2070
 Delta R.T. -0.000 min
 Lab File: VX047932.D
 Acq: 01 Oct 2025 12:22

Tgt Ion: 225 Resp: 440

Ion	Ratio	Lower	Upper
225	100		
223	53.0	31.7	95.1
227	64.3	32.0	96.0

