

Data Path : Z:\VOASRV\HPCHEM1\MSVOA X\DATA\VX100219\
 Data File : VX012771.D
 Acq On : 02 Oct 2019 19:57
 Operator : JC/SP
 Sample : K5157-08
 Misc : 5.0mL/MSVOA X/WATER
 ALS Vial : 25 Sample Multiplier: 1

Instrument :
 MSVOA_X
 ClientSampled :
 S49-0524

Quant Time: Oct 03 01:34:44 2019
 Quant Method : Z:\VOASRV\HPCHEM1\MSVOA_X\METHOD\82X092319W.M
 Quant Title : SW846 8260
 QLast Update : Mon Sep 23 12:27:01 2019
 Response via : Initial Calibration

Internal Standards	R.T.	QIon	Response	Conc	Units	Dev(Min)
1) Pentafluorobenzene	5.65	168	162704	50.00	ug/l	0.00
34) 1,4-Difluorobenzene	6.85	114	283282	50.00	ug/l	0.00
63) Chlorobenzene-d5	10.11	117	238689	50.00	ug/l	0.00
72) 1,4-Dichlorobenzene-d4	12.07	152	85132	50.00	ug/l	0.00

System Monitoring Compounds

33) 1,2-Dichloroethane-d4	6.06	65	114754	48.43	ug/l	0.00
Spiked Amount	50.000		Recovery	=	96.86%	
35) Dibromofluoromethane	5.49	113	86210	51.10	ug/l	0.00
Spiked Amount	50.000		Recovery	=	102.20%	
50) Toluene-d8	8.71	98	330207	50.82	ug/l	0.00
Spiked Amount	50.000		Recovery	=	101.64%	
62) 4-Bromofluorobenzene	11.14	95	104394	40.86	ug/l	0.00
Spiked Amount	50.000		Recovery	=	81.72%	

Target Compounds

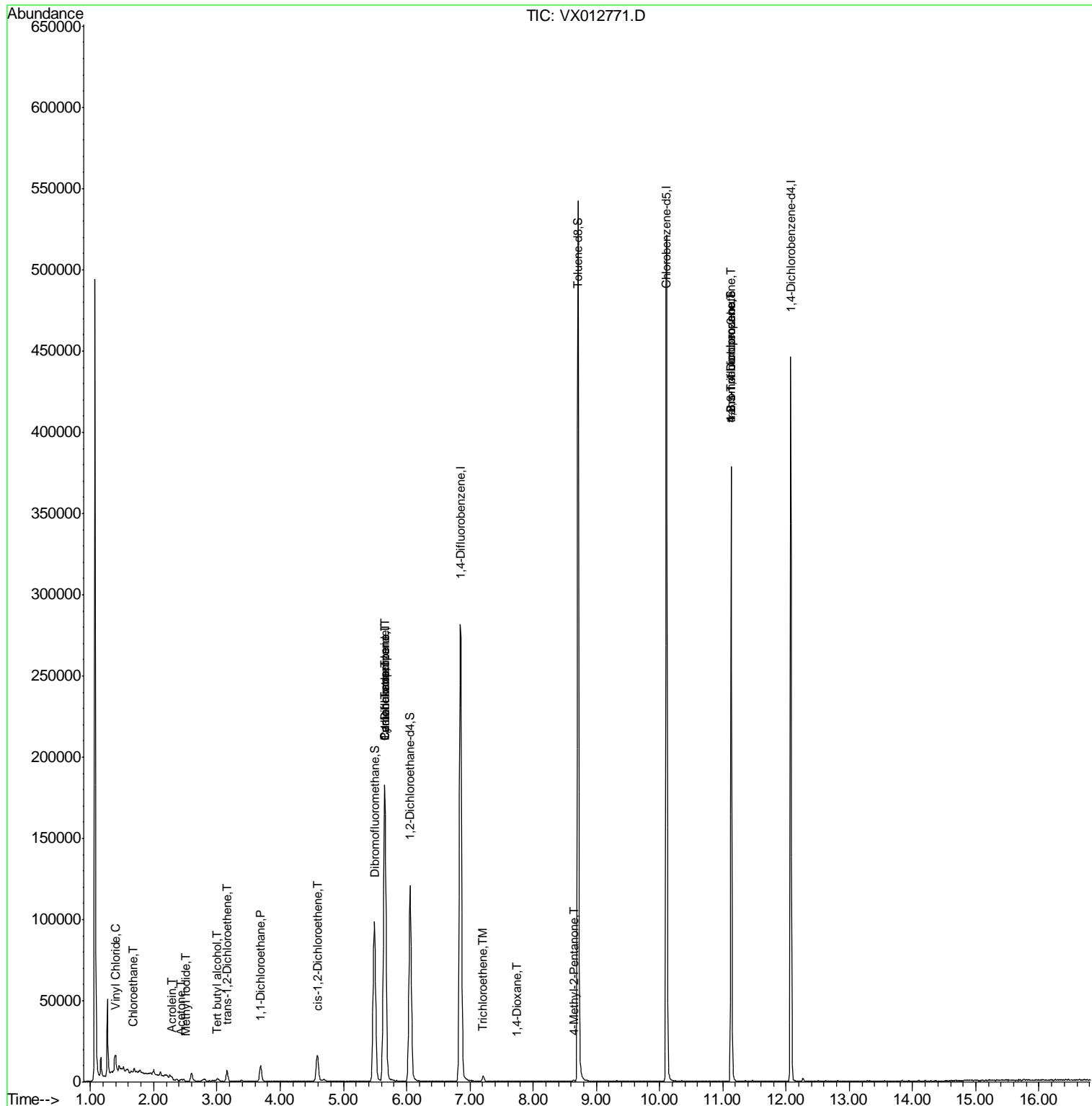
						Qvalue
4) Vinyl Chloride	1.40	62	2736	1.310	ug/l #	66
6) Chloroethane	1.66	64	679	0.482	ug/l #	45
10) Methyl Iodide	2.50	142	45	4.975	ug/l #	35
11) Tert butyl alcohol	3.00	59	1387	2.343	ug/l #	72
13) Acrolein	2.29	56	153	10.678	ug/l #	15
16) Acetone	2.44	43	1051	0.837	ug/l #	76
21) trans-1,2-Dichloroethene	3.16	96	2771	1.430	ug/l #	82
24) 1,1-Dichloroethane	3.69	63	10124	2.777	ug/l #	90
27) cis-1,2-Dichloroethene	4.59	96	9731	4.327	ug/l #	87
31) Cyclohexane	5.65	56	3718	1.127	ug/l #	7
36) 1,1-Dichloropropene	5.65	75	13983	5.121	ug/l #	53
38) Carbon Tetrachloride	5.65	117	17997	6.488	ug/l #	16
44) Trichloroethene	7.21	130	1391	0.677	ug/l #	71
49) 1,4-Dioxane	7.75	88	25	0.431	ug/l #	54
51) 4-Methyl-2-Pentanone	8.65	43	851	0.258	ug/l #	82
76) 1,2,3-Trichloropropane	11.14	75	53235	23.640	ug/l #	38
81) trans-1,4-Dichloro-2-buten	11.14	75	53235	67.745	ug/l #	8

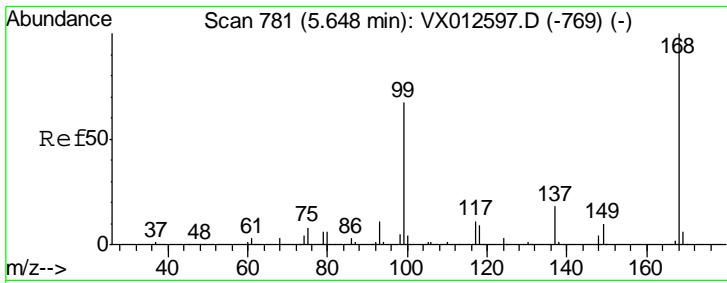
(#) = qualifier out of range (m) = manual integration (+) = signals summed

Data Path : Z:\VOASRV\HPCHEM1\MSVOA X\DATA\VX100219\
 Data File : VX012771.D
 Acq On : 02 Oct 2019 19:57
 Operator : JC/SP
 Sample : K5157-08
 Misc : 5.0mL/MSVOA X/WATER
 ALS Vial : 25 Sample Multiplier: 1

Instrument :
 MSVOA_X
 Client Sampled :
 S49-0524

Quant Time: Oct 03 01:34:44 2019
 Quant Method : Z:\VOASRV\HPCHEM1\MSVOA_X\METHOD\82X092319W.M
 Quant Title : SW846 8260
 QLast Update : Mon Sep 23 12:27:01 2019
 Response via : Initial Calibration

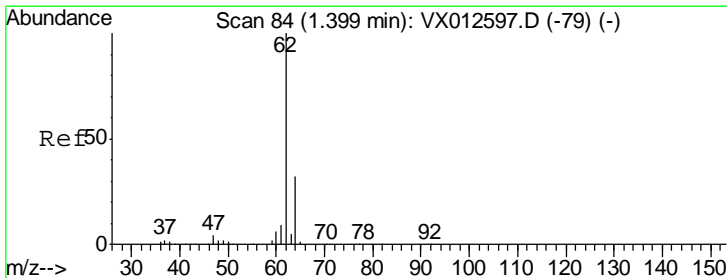
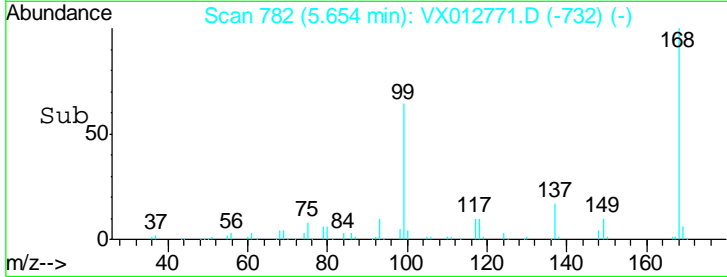
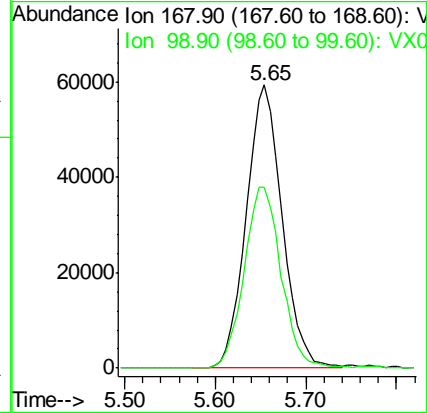
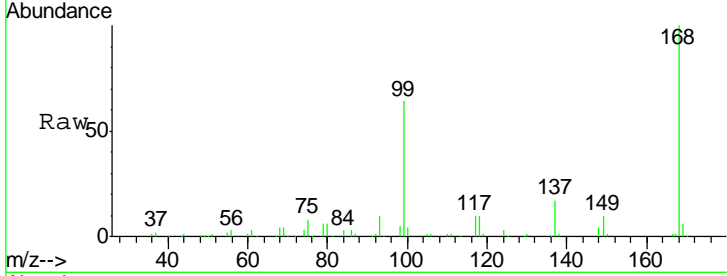




#1
 Pentafluorobenzene
 Concen: 50.000 ug/l
 RT: 5.65 min Scan# 782
 Delta R.T. 0.01 min
 Lab File: VX012771.D
 Acq: 02 Oct 2019 19:57

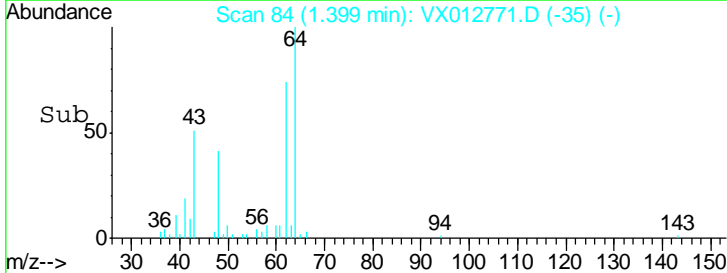
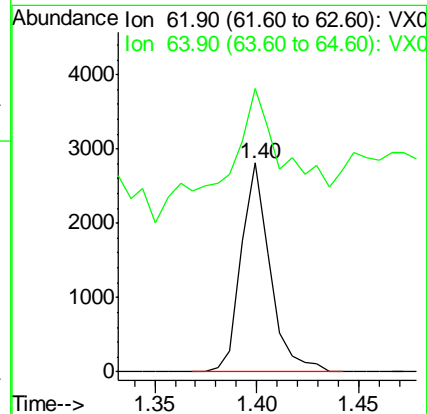
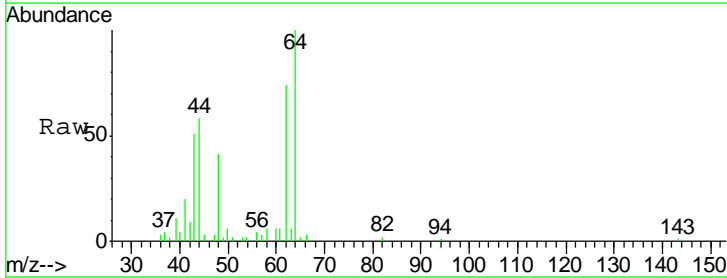
Instrument :
 MSVOA_X
 ClientSampled :
 S49-0524

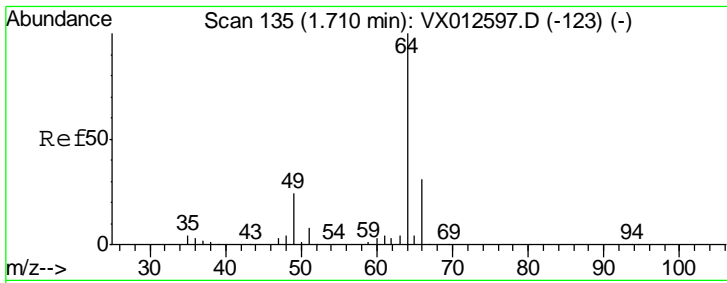
Tgt Ion: 168 Resp: 162704
 Ion Ratio Lower Upper
 168 100
 99 64.0 51.4 77.2



#4
 Vinyl Chloride
 Concen: 1.310 ug/l
 RT: 1.40 min Scan# 84
 Delta R.T. -0.00 min
 Lab File: VX012771.D
 Acq: 02 Oct 2019 19:57

Tgt Ion: 62 Resp: 2736
 Ion Ratio Lower Upper
 62 100
 64 48.6 24.2 36.2#

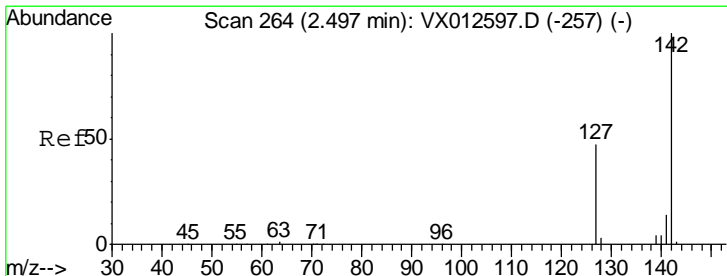
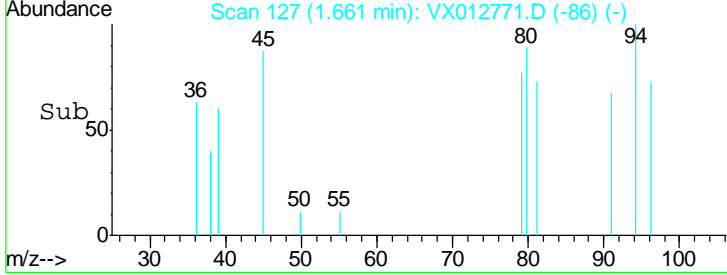
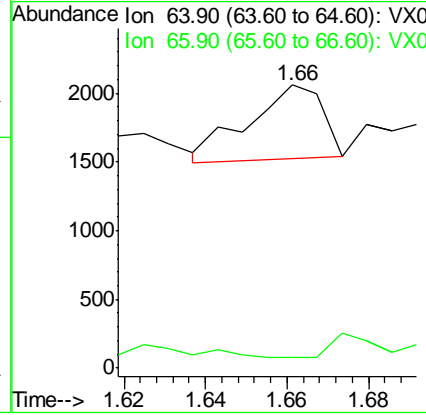
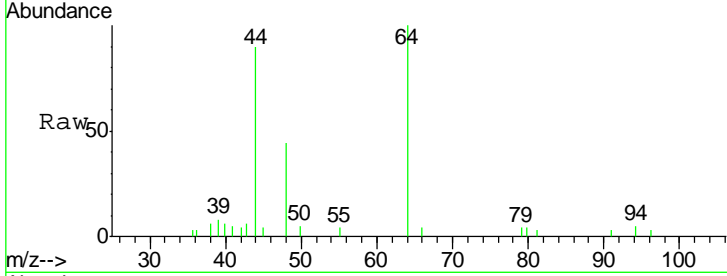




#6
 Chloroethane
 Concen: 0.482 ug/l
 RT: 1.66 min Scan# 127
 Delta R.T. -0.05 min
 Lab File: VX012771.D
 Acq: 02 Oct 2019 19:57

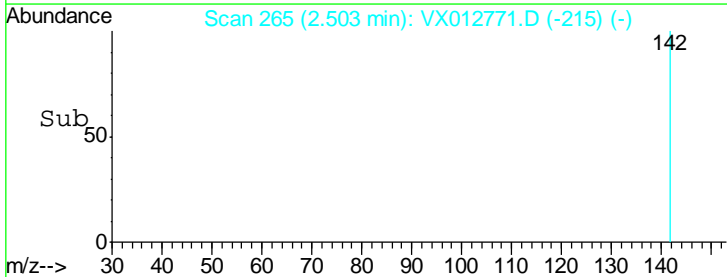
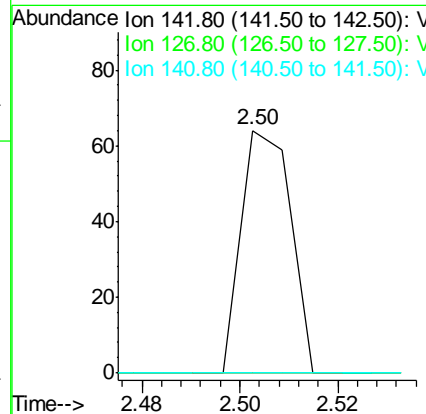
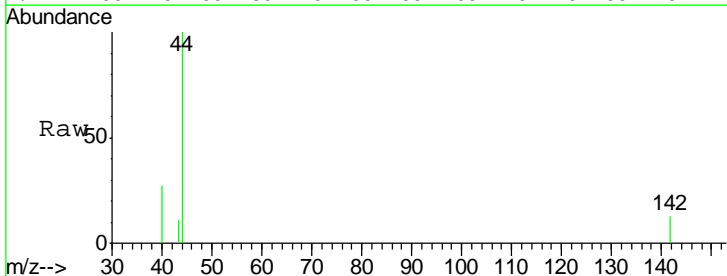
Instrument :
 MSVOA_X
 ClientSampled :
 S49-0524

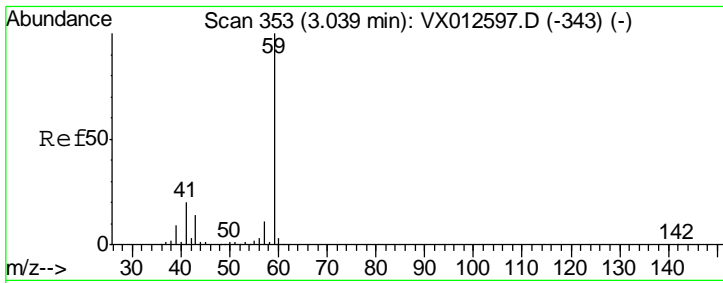
Tgt Ion	Resp	Lower	Upper
64	100		
66	0.0	24.0	36.0#



#10
 Methyl Iodide
 Concen: 4.975 ug/l
 RT: 2.50 min Scan# 265
 Delta R.T. 0.01 min
 Lab File: VX012771.D
 Acq: 02 Oct 2019 19:57

Tgt Ion	Resp	Lower	Upper
142	100		
127	0.0	40.8	61.2#
141	0.0	12.1	18.1#

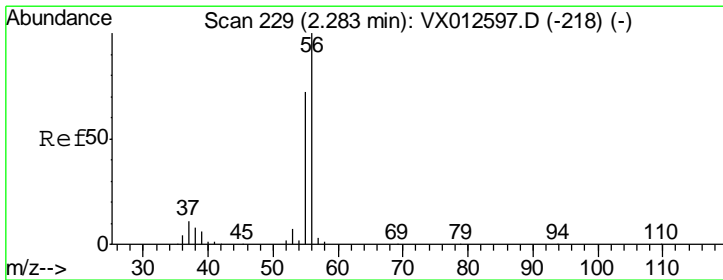
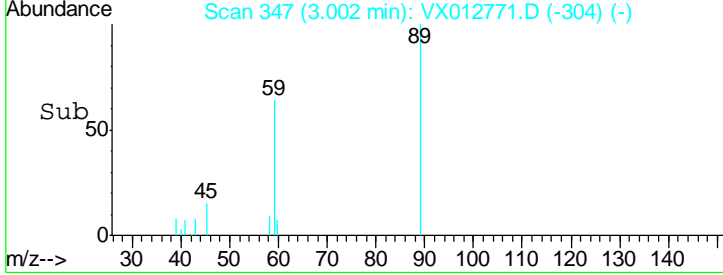
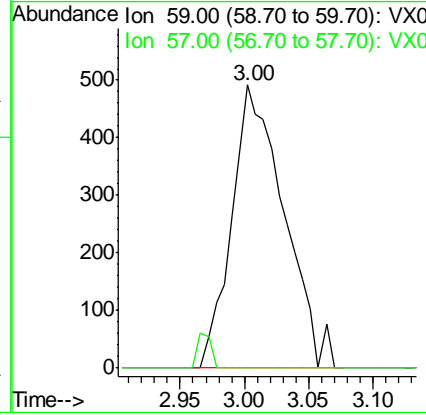
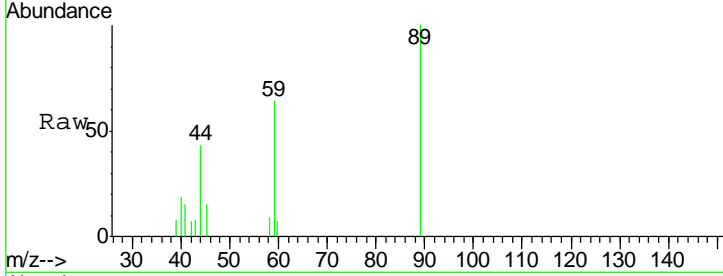




#11
 Tert butyl alcohol
 Concen: 2.343 ug/l
 RT: 3.00 min Scan# 347
 Delta R.T. -0.04 min
 Lab File: VX012771.D
 Acq: 02 Oct 2019 19:57

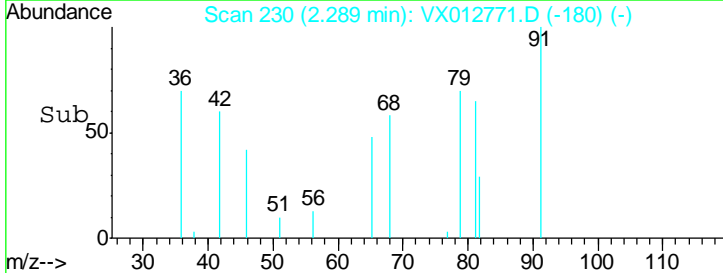
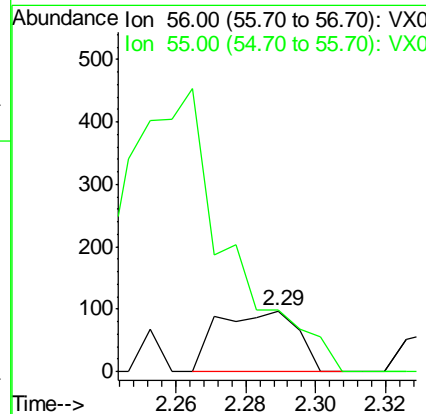
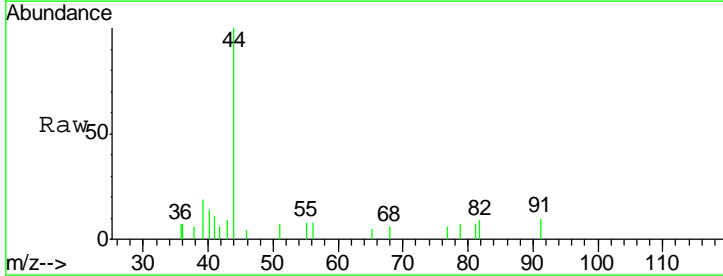
Instrument :
 MSVOA_X
 ClientSampled :
 S49-0524

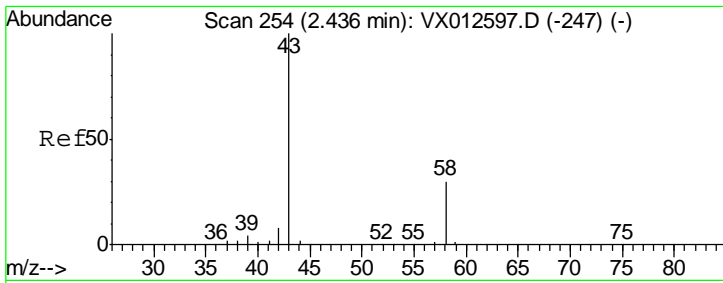
Tgt Ion: 59 Resp: 1387
 Ion Ratio Lower Upper
 59 100
 57 0.0 8.3 12.5#



#13
 Acrolein
 Concen: 10.678 ug/l
 RT: 2.29 min Scan# 230
 Delta R.T. 0.01 min
 Lab File: VX012771.D
 Acq: 02 Oct 2019 19:57

Tgt Ion: 56 Resp: 153
 Ion Ratio Lower Upper
 56 100
 55 0.0 55.8 83.8#

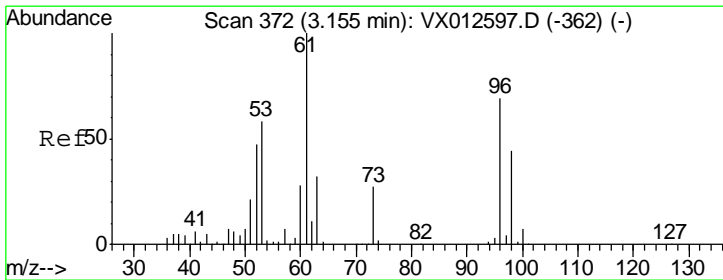
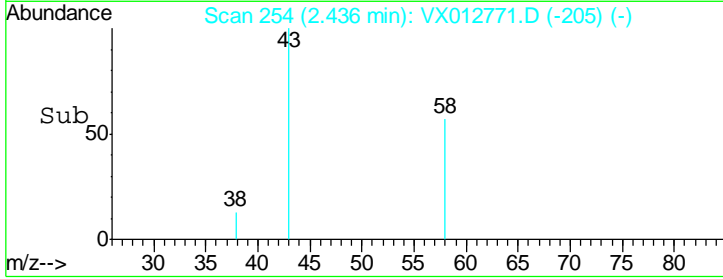
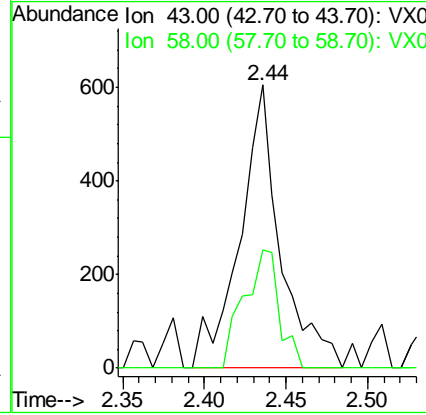
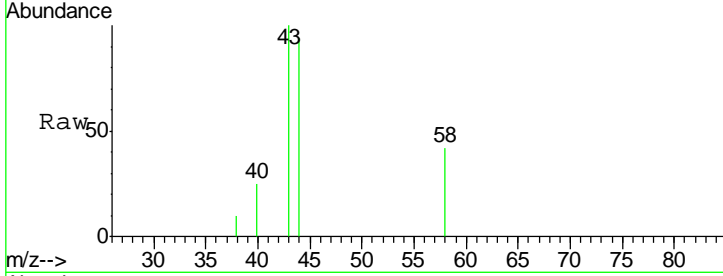




#16
 Acetone
 Concen: 0.837 ug/l
 RT: 2.44 min Scan# 254
 Delta R.T. 0.00 min
 Lab File: VX012771.D
 Acq: 02 Oct 2019 19:57

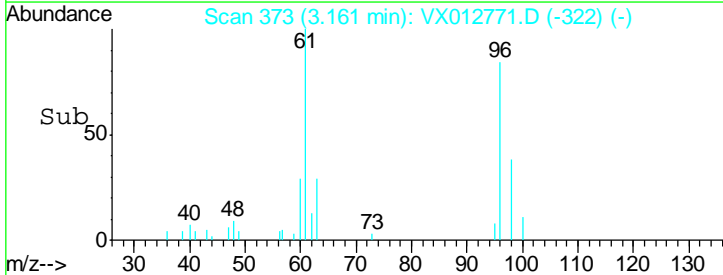
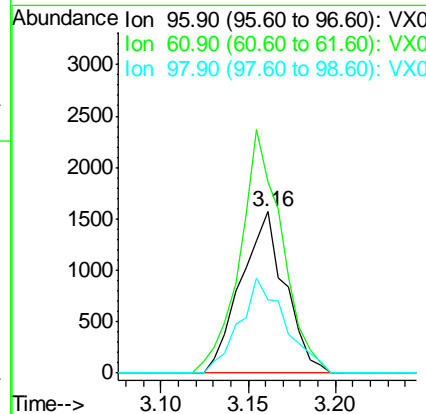
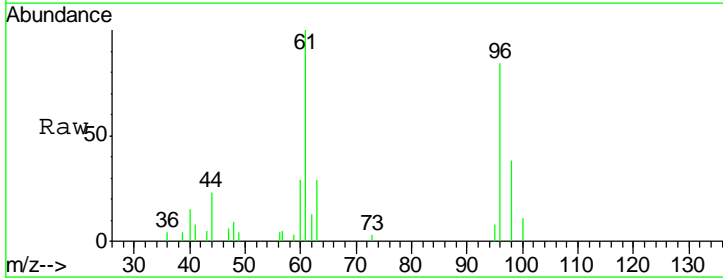
Instrument :
 MSVOA_X
 ClientSampled :
 S49-0524

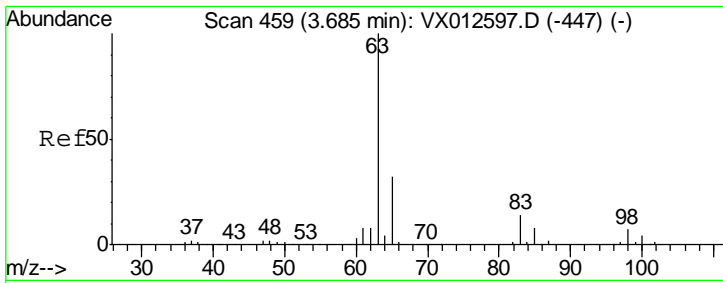
Tgt Ion	Resp	Lower	Upper
43	1051		
58	41.8	23.3	34.9#



#21
 trans-1,2-Dichloroethene
 Concen: 1.430 ug/l
 RT: 3.16 min Scan# 373
 Delta R.T. 0.01 min
 Lab File: VX012771.D
 Acq: 02 Oct 2019 19:57

Tgt Ion	Resp	Lower	Upper
96	2771		
61	118.9	112.0	168.0
98	45.7	47.8	71.8#

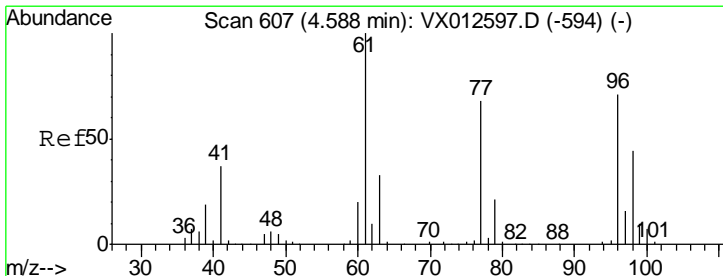
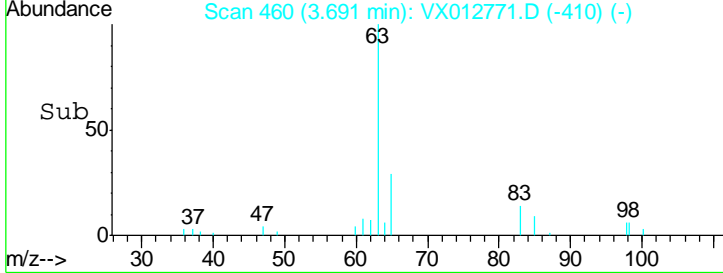
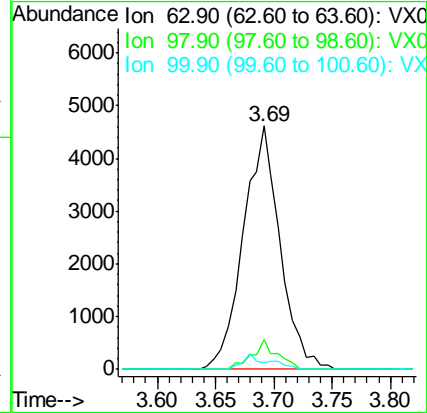
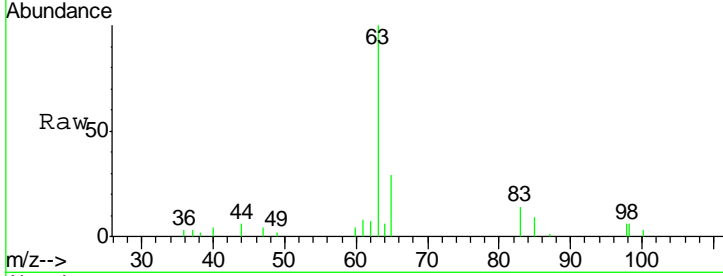




#24
 1,1-Dichloroethane
 Concen: 2.777 ug/l
 RT: 3.69 min Scan# 460
 Delta R.T. 0.01 min
 Lab File: VX012771.D
 Acq: 02 Oct 2019 19:57

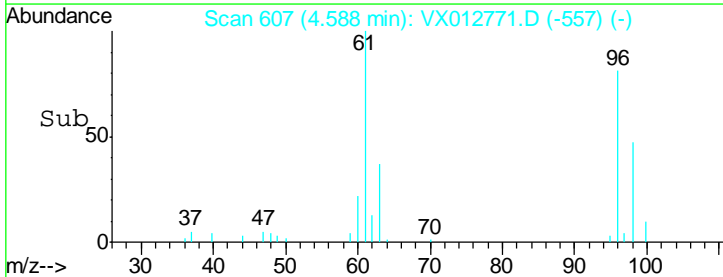
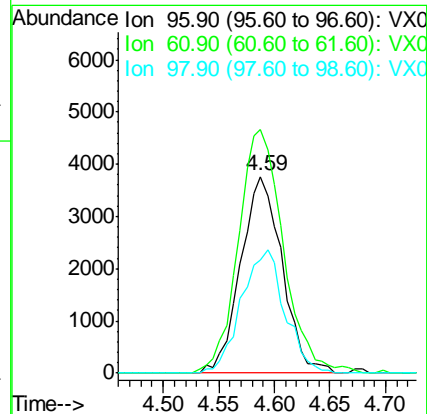
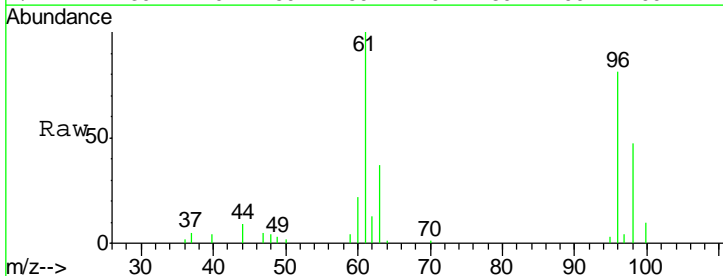
Instrument :
 MSVOA_X
 ClientSampled :
 S49-0524

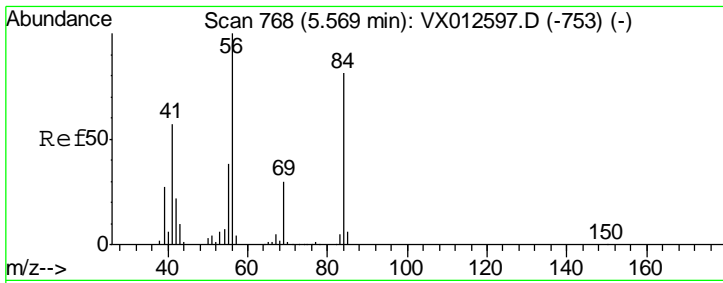
Tgt Ion	Resp	Lower	Upper
63	10124		
98	12.5	3.9	11.7#
100	3.0	2.3	6.9



#27
 cis-1,2-Dichloroethene
 Concen: 4.327 ug/l
 RT: 4.59 min Scan# 607
 Delta R.T. 0.01 min
 Lab File: VX012771.D
 Acq: 02 Oct 2019 19:57

Tgt Ion	Resp	Lower	Upper
96	9731		
61	135.2	0.0	319.4
98	65.7	0.0	130.6

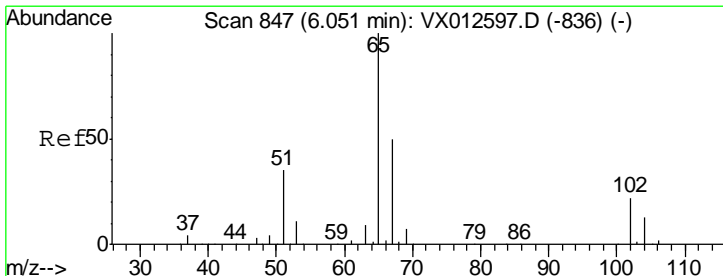
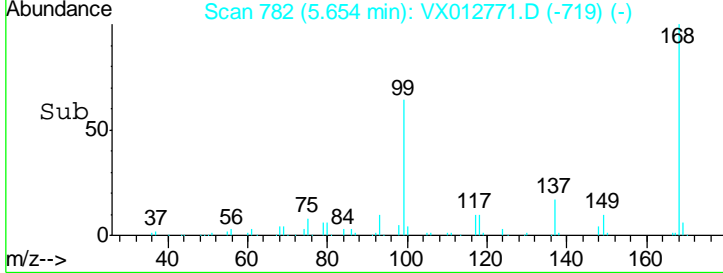
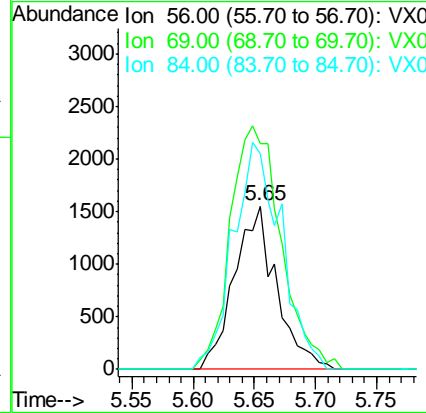
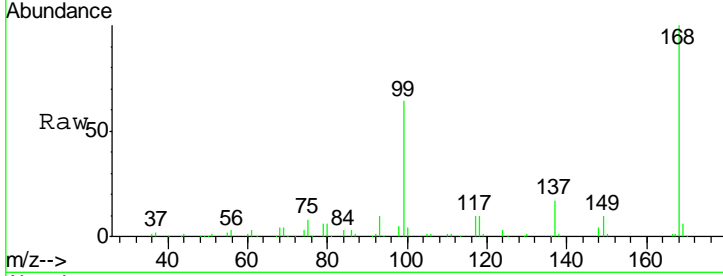




#31
 Cyclohexane
 Concen: 1.127 ug/l
 RT: 5.65 min Scan# 782
 Delta R.T. 0.09 min
 Lab File: VX012771.D
 Acq: 02 Oct 2019 19:57

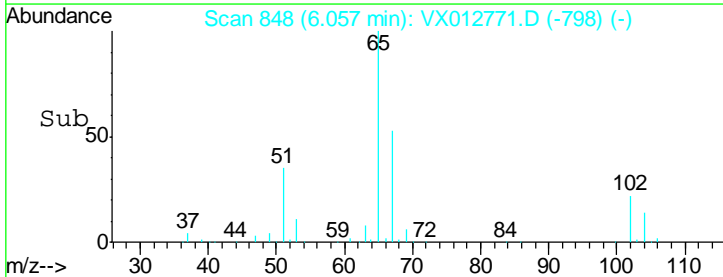
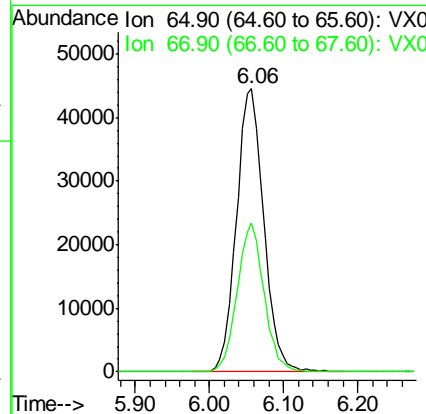
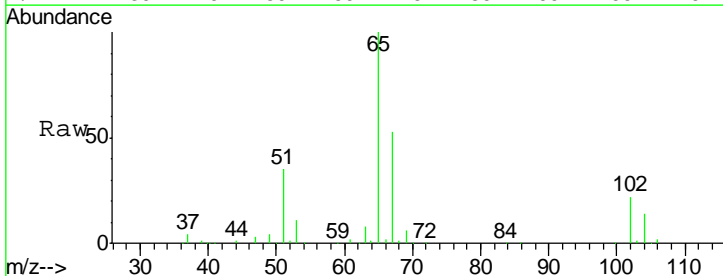
Instrument :
 MSVOA_X
 ClientSampled :
 S49-0524

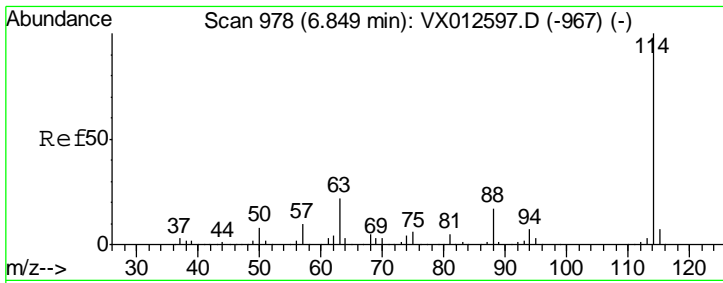
Tgt Ion	Resp	Lower	Upper
56	3718		
69	138.7	25.0	37.6#
84	131.8	66.4	99.6#



#33
 1,2-Dichloroethane-d4
 Concen: 48.434 ug/l
 RT: 6.06 min Scan# 848
 Delta R.T. 0.01 min
 Lab File: VX012771.D
 Acq: 02 Oct 2019 19:57

Tgt Ion	Resp	Lower	Upper
65	114754		
67	51.6	0.0	101.2

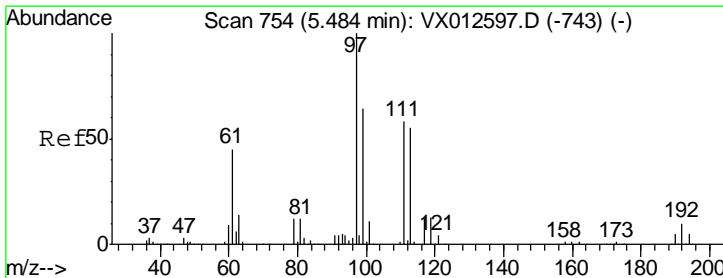
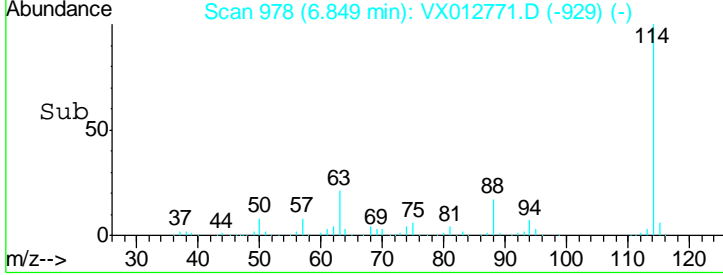
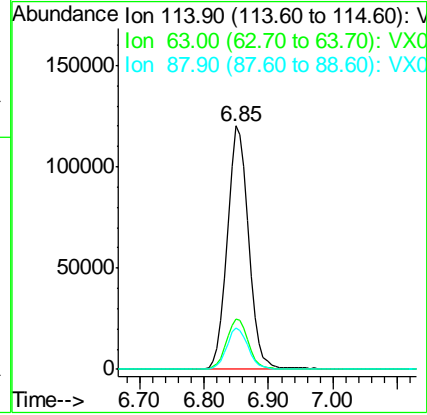
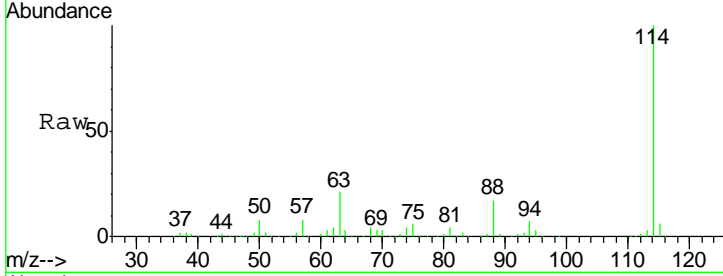




#34
 1,4-Difluorobenzene
 Concen: 50.000 ug/l
 RT: 6.85 min Scan# 978
 Delta R.T. 0.00 min
 Lab File: VX012771.D
 Acq: 02 Oct 2019 19:57

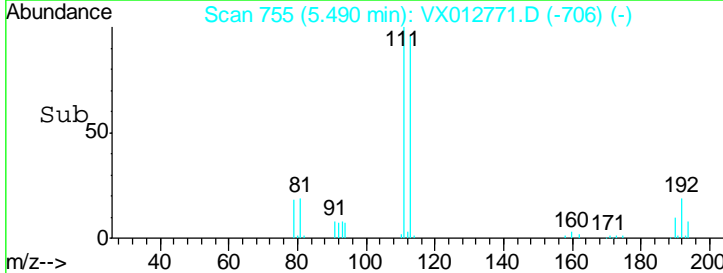
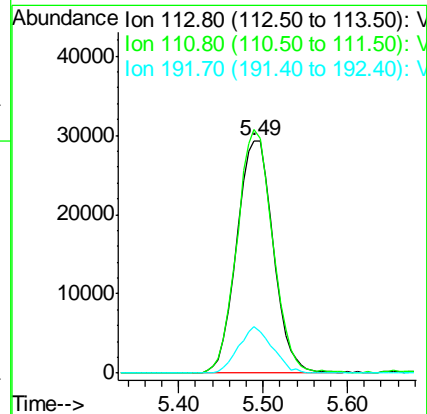
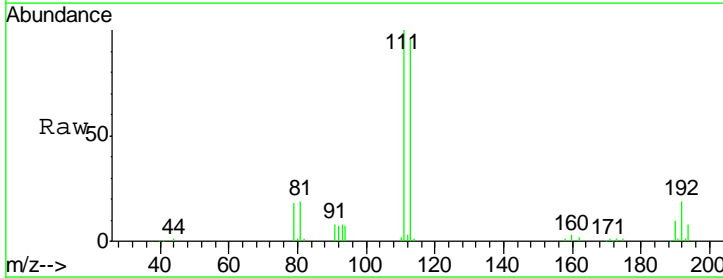
Instrument :
 MSVOA_X
 ClientSampled :
 S49-0524

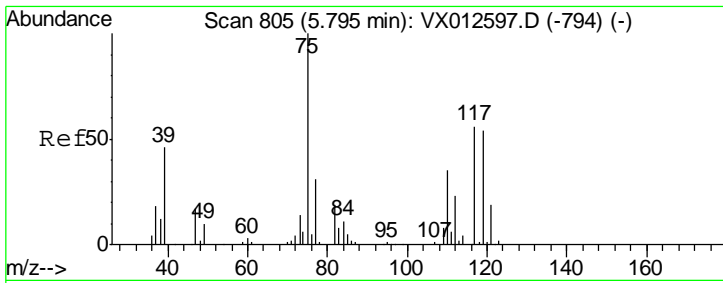
Tgt Ion	Resp	Lower	Upper
114	100		
63	20.7	0.0	43.2
88	17.2	0.0	33.2



#35
 Dibromofluoromethane
 Concen: 51.101 ug/l
 RT: 5.49 min Scan# 755
 Delta R.T. 0.00 min
 Lab File: VX012771.D
 Acq: 02 Oct 2019 19:57

Tgt Ion	Resp	Lower	Upper
113	100		
111	102.3	83.4	125.2
192	18.6	14.4	21.6

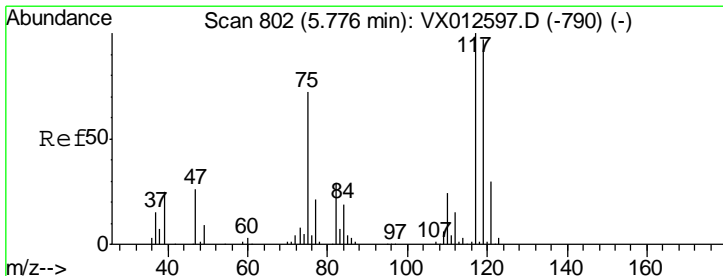
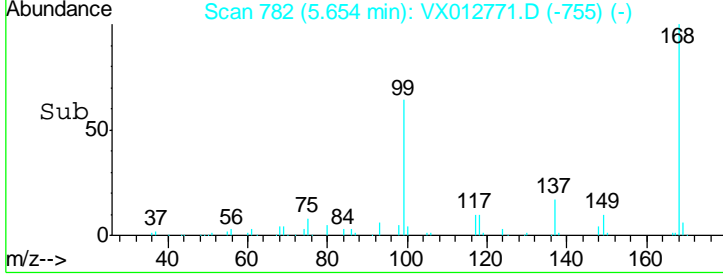
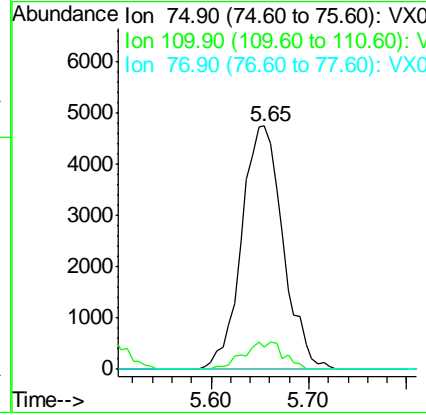
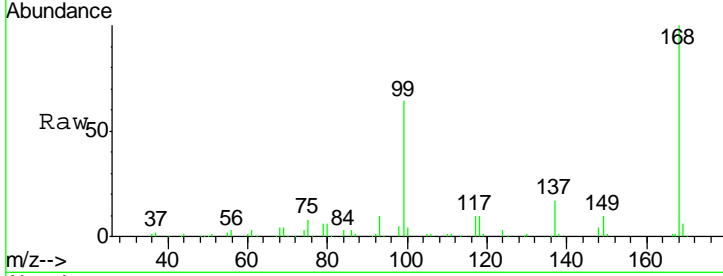




#36
 1,1-Dichloropropene
 Concen: 5.121 ug/l
 RT: 5.65 min Scan# 782
 Delta R.T. -0.13 min
 Lab File: VX012771.D
 Acq: 02 Oct 2019 19:57

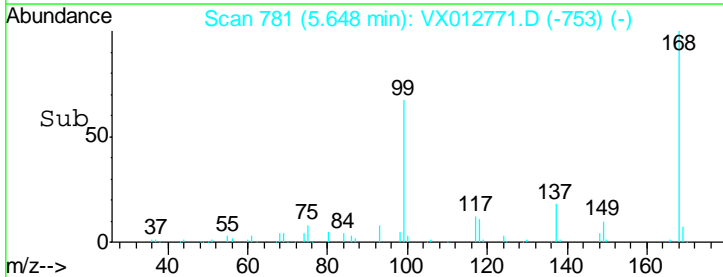
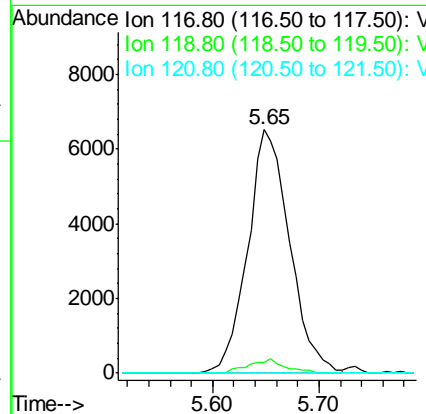
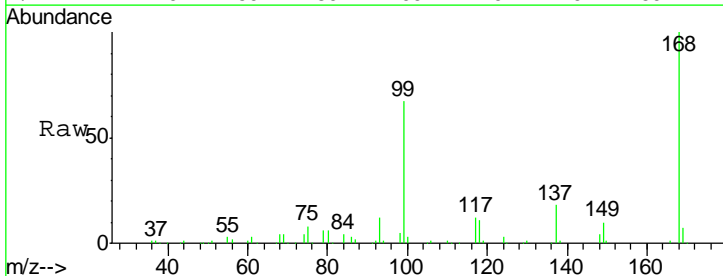
Instrument :
 MSVOA_X
 ClientSampled :
 S49-0524

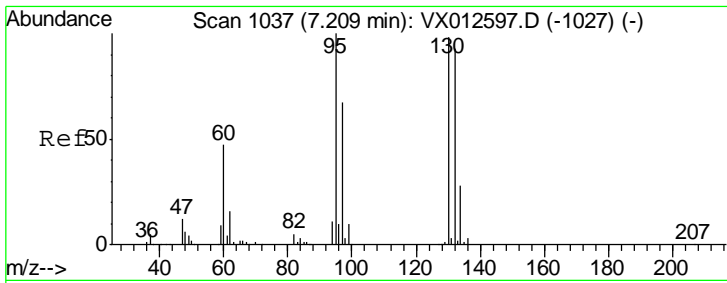
Tgt Ion	Resp	Lower	Upper
75	13983		
110	10.9	16.7	50.0#
77	0.0	24.2	36.2#



#38
 Carbon Tetrachloride
 Concen: 6.488 ug/l
 RT: 5.65 min Scan# 781
 Delta R.T. -0.13 min
 Lab File: VX012771.D
 Acq: 02 Oct 2019 19:57

Tgt Ion	Resp	Lower	Upper
117	17997		
119	4.5	75.7	113.5#
121	0.0	24.2	36.4#

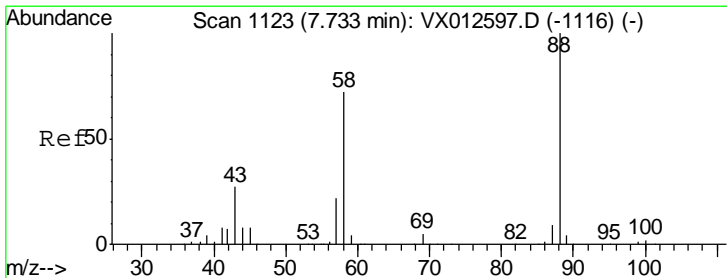
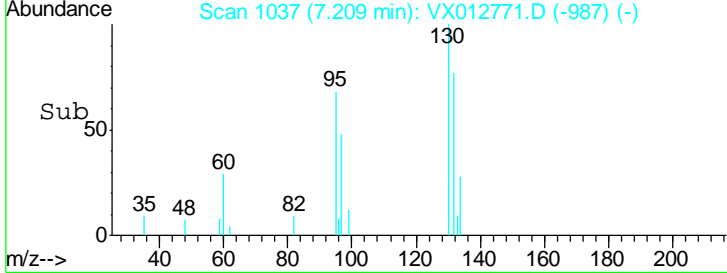
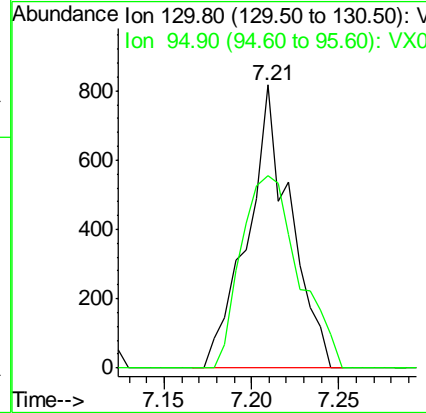
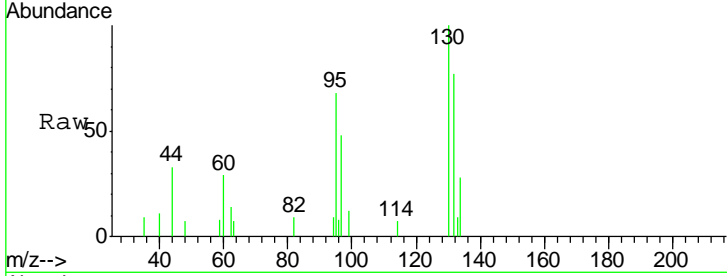




#44
 Trichloroethene
 Concen: 0.677 ug/l
 RT: 7.21 min Scan# 1037
 Delta R.T. 0.01 min
 Lab File: VX012771.D
 Acq: 02 Oct 2019 19:57

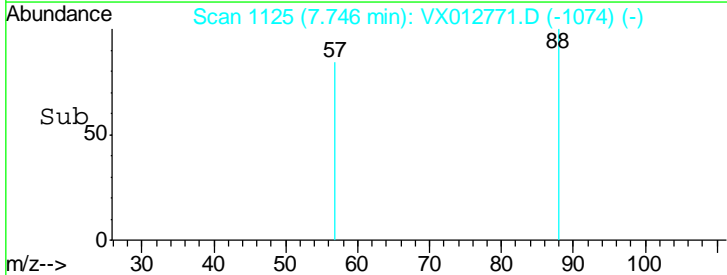
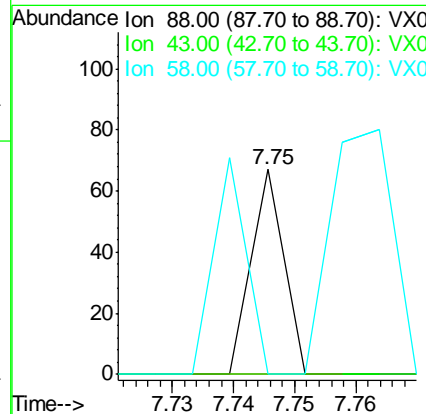
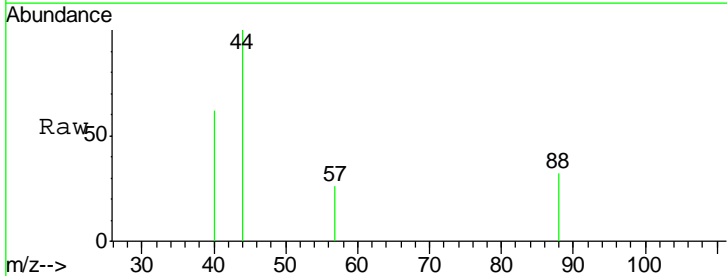
Instrument : MSVOA_X
 ClientSampled : S49-0524

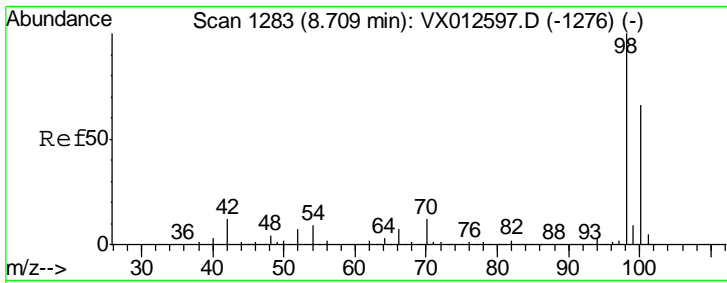
Tgt Ion	Resp	Lower	Upper
130	100		
95	68.1	0.0	193.0



#49
 1,4-Dioxane
 Concen: 0.431 ug/l
 RT: 7.75 min Scan# 1125
 Delta R.T. 0.01 min
 Lab File: VX012771.D
 Acq: 02 Oct 2019 19:57

Tgt Ion	Resp	Lower	Upper
88	100		
43	0.0	29.4	44.0#
58	104.0	57.5	86.3#

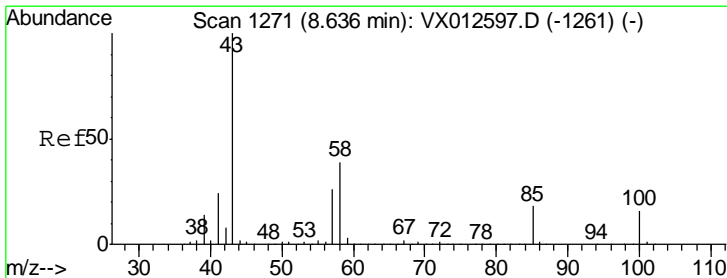
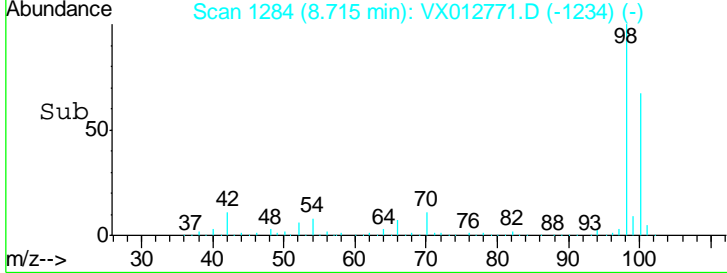
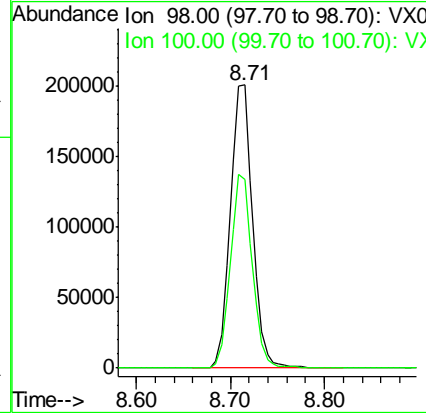
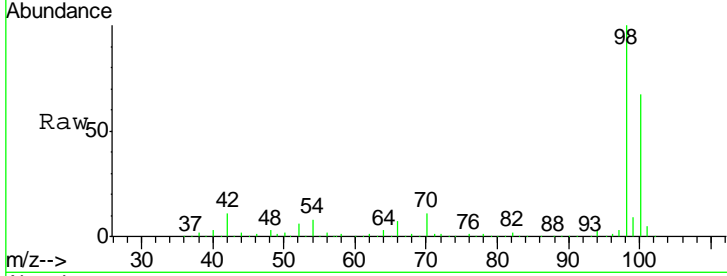




#50
 Toluene-d8
 Concen: 50.825 ug/l
 RT: 8.71 min Scan# 1284
 Delta R.T. 0.01 min
 Lab File: VX012771.D
 Acq: 02 Oct 2019 19:57

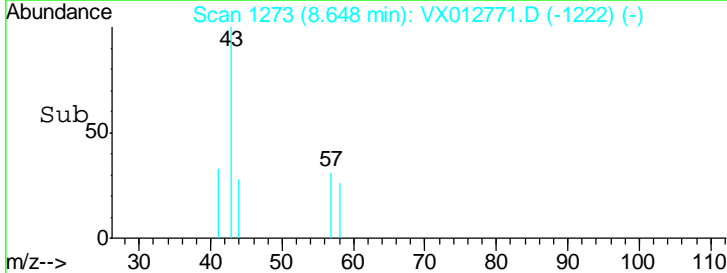
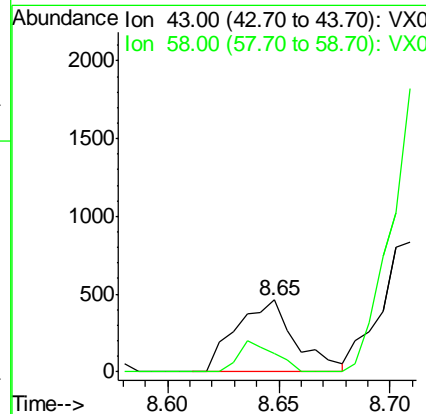
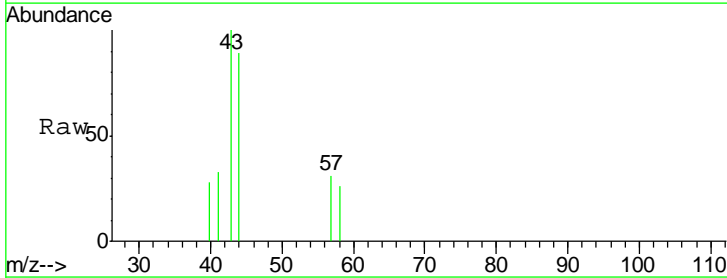
Instrument : MSVOA_X
 ClientSampled : S49-0524

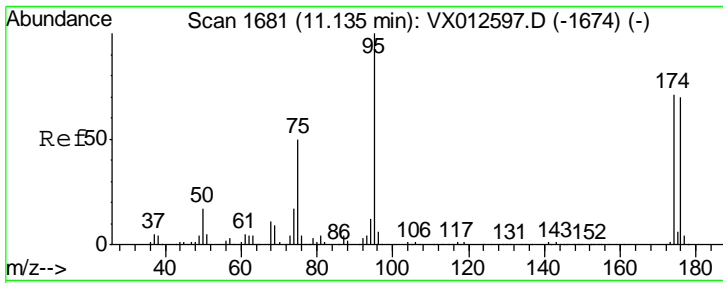
Tgt Ion: 98 Resp: 330207
 Ion Ratio Lower Upper
 98 100
 100 67.5 53.4 80.2



#51
 4-Methyl-2-Pentanone
 Concen: 0.258 ug/l
 RT: 8.65 min Scan# 1273
 Delta R.T. 0.01 min
 Lab File: VX012771.D
 Acq: 02 Oct 2019 19:57

Tgt Ion: 43 Resp: 851
 Ion Ratio Lower Upper
 43 100
 58 26.7 29.8 44.6#



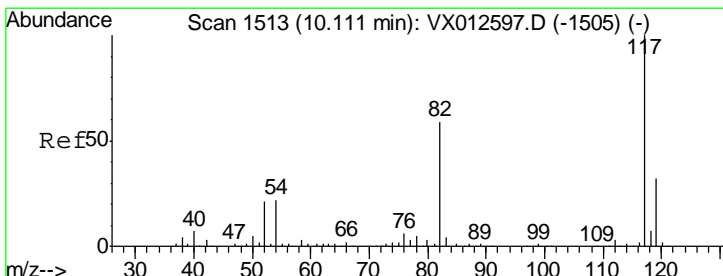
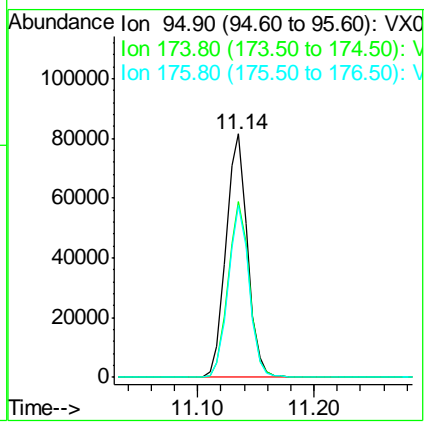
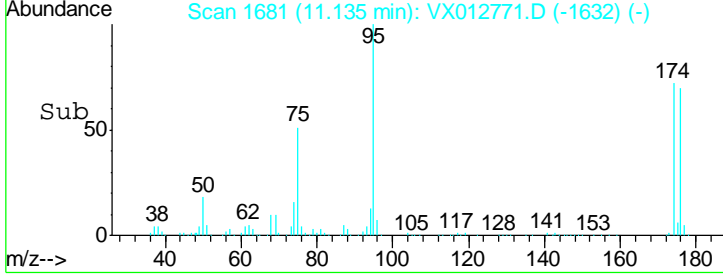
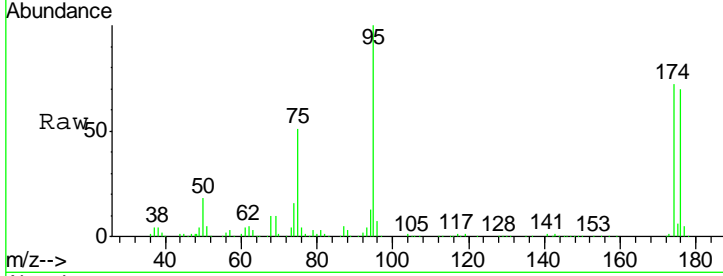


#62
 4-Bromofluorobenzene
 Concen: 40.864 ug/l
 RT: 11.14 min Scan# 1681
 Delta R.T. 0.00 min
 Lab File: VX012771.D
 Acq: 02 Oct 2019 19:57

Instrument : MSVOA_X
 ClientSampled : S49-0524

Tot Ion: 95 Resp: 104394

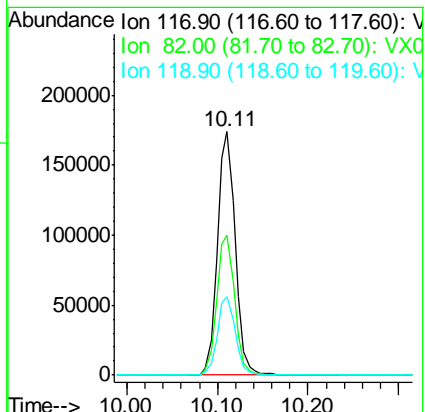
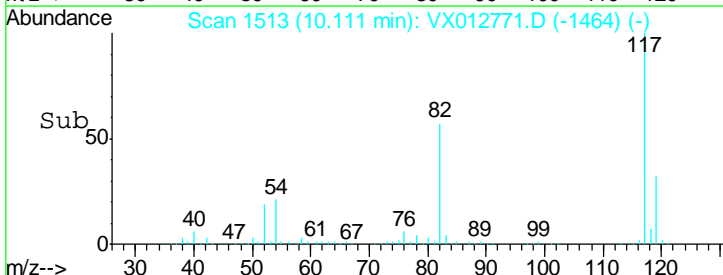
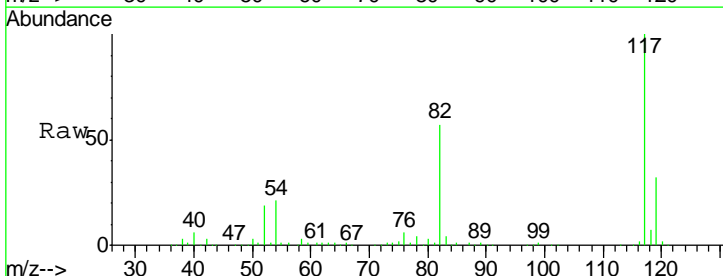
Ion	Ratio	Lower	Upper
95	100		
174	71.4	0.0	140.0
176	68.9	0.0	135.4

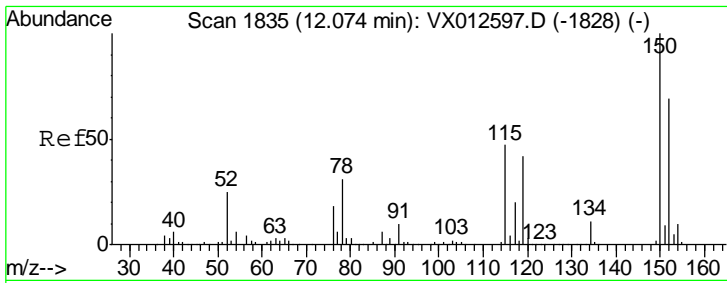


#63
 Chlorobenzene-d5
 Concen: 50.000 ug/l
 RT: 10.11 min Scan# 1513
 Delta R.T. -0.00 min
 Lab File: VX012771.D
 Acq: 02 Oct 2019 19:57

Tgt Ion: 117 Resp: 238689

Ion	Ratio	Lower	Upper
117	100		
82	57.2	45.9	68.9
119	32.3	25.3	37.9

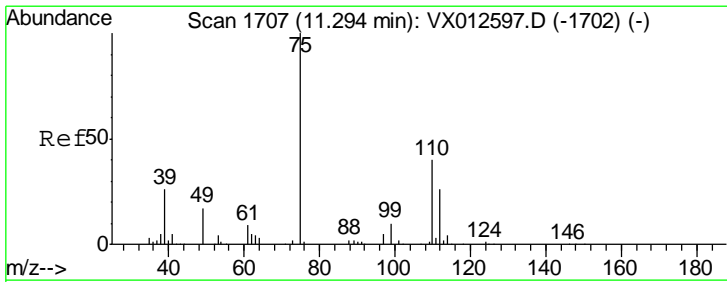
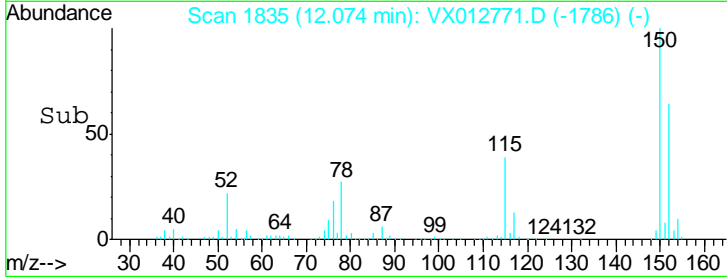
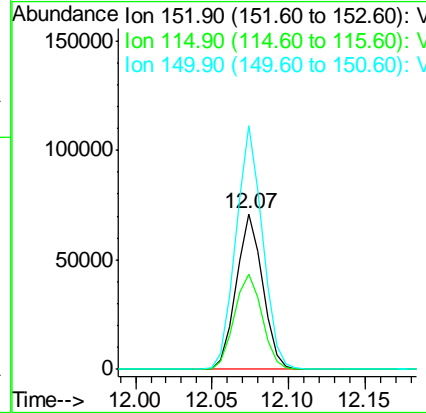
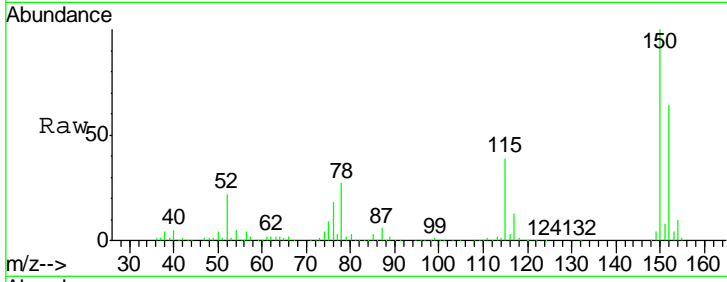




#72
 1,4-Dichlorobenzene-d4
 Concen: 50.000 ug/l
 RT: 12.07 min Scan# 1835
 Delta R.T. 0.00 min
 Lab File: VX012771.D
 Acq: 02 Oct 2019 19:57

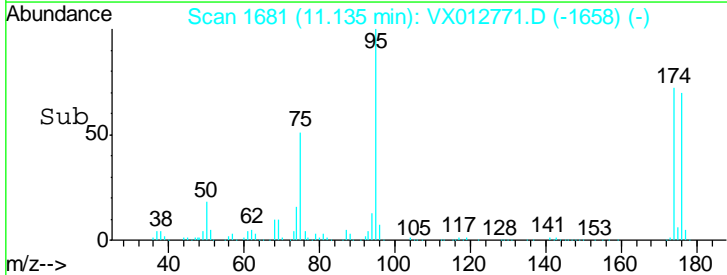
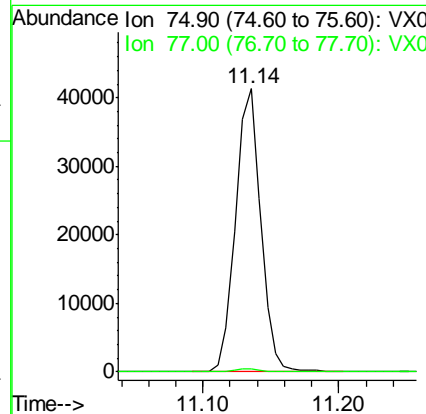
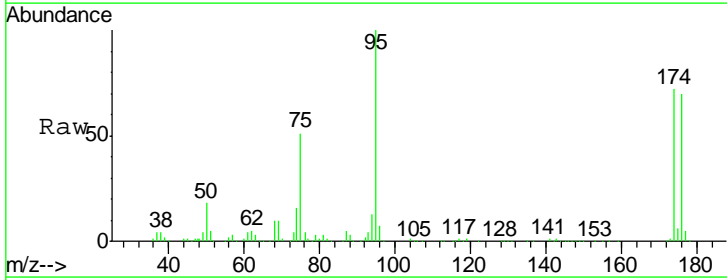
Instrument :
 MSVOA_X
 ClientSampled :
 S49-0524

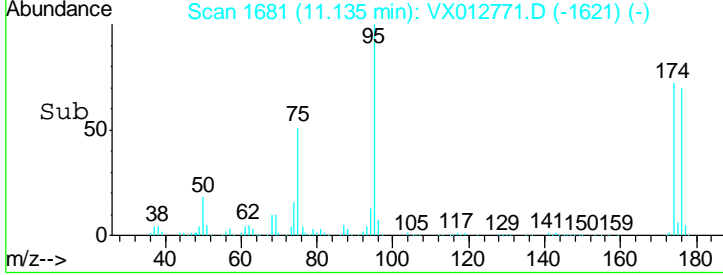
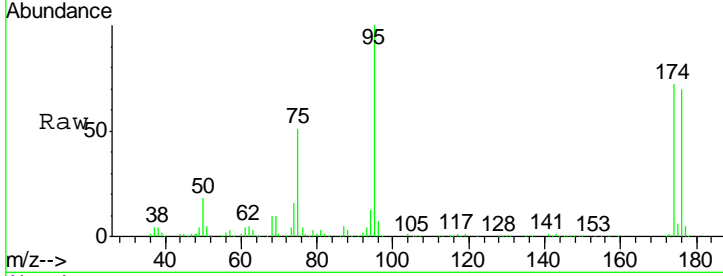
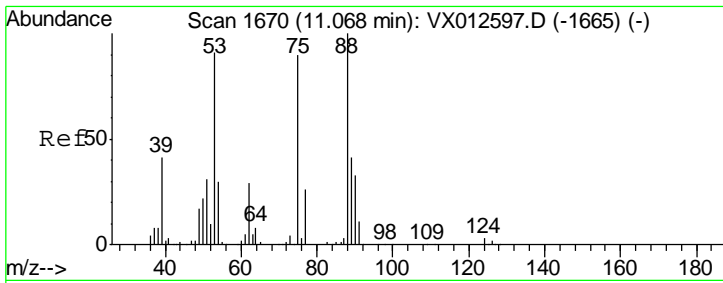
Tgt Ion	Resp	Lower	Upper
152	100		
115	64.0	44.1	132.3
150	156.9	0.0	343.8



#76
 1,2,3-Trichloropropane
 Concen: 23.640 ug/l
 RT: 11.14 min Scan# 1681
 Delta R.T. -0.16 min
 Lab File: VX012771.D
 Acq: 02 Oct 2019 19:57

Tgt Ion	Resp	Lower	Upper
75	100		
77	1.2	19.7	59.0#





#81
 trans-1,4-Dichloro-2-butene
 Concen: 67.745 ug/l
 RT: 11.14 min Scan# 1681
 Delta R.T. 0.07 min
 Lab File: VX012771.D
 Acq: 02 Oct 2019 19:57

Instrument : MSVOA_X
 ClientSampled : S49-0524

Tot Ion	Resp	Lower	Upper
75	53235		
75	100		
53	0.0	83.6	125.4#
89	0.2	36.3	54.5#

