

Data Path : Z:\VOASRV\HPCHEM1\MSVOA X\DATA\VX100220\
 Data File : VX018758.D
 Acq On : 02 Oct 2020 19:29
 Operator : JC/SP
 Sample : L4239-05
 Misc : 25.0mL/MSVOA X/WATER
 ALS Vial : 23 Sample Multiplier: 1

Instrument :
 MSVOA_X
 ClientSampleId :
 BG3N5

Quant Time: Oct 03 05:23:38 2020
 Quant Method : Z:\VOASRV\HPCHEM1\MSVOA_X\METHOD\SOMXTR100220WMA.M
 Quant Title : TRACE VOA SOM01.0
 QLast Update : Fri Oct 02 14:11:08 2020
 Response via : Initial Calibration

Internal Standards	R.T.	QIon	Response	Conc	Units	Dev(Min)
1) 1,4-Difluorobenzene	6.83	114	303310	5.00	ug/L	0.00
28) Chlorobenzene-d5	10.10	117	271719	5.00	ug/L	0.00
61) 1,4-Dichlorobenzene-d4	12.07	152	130130	5.00	ug/L	0.01

System Monitoring Compounds

4) Vinyl Chloride-d3	1.39	65	103232	5.82	ug/L	0.00
Spiked Amount	5.000	Range	40 - 130	Recovery	=	116.40%
7) Chloroethane-d5	1.70	69	75653	5.46	ug/L	0.00
Spiked Amount	5.000	Range	65 - 130	Recovery	=	109.20%
11) 1,1-Dichloroethene-d2	2.35	63	329362	8.24	ug/L	0.00
Spiked Amount	5.000	Range	60 - 125	Recovery	=	164.80%#
20) 2-Butanone-d5	4.57	46	248492	53.47	ug/L	0.01
Spiked Amount	50.000	Range	40 - 130	Recovery	=	106.94%
24) Chloroform-d	5.14	84	197915	4.62	ug/L	0.00
Spiked Amount	5.000	Range	70 - 125	Recovery	=	92.40%
26) 1,2-Dichloroethane-d4	6.03	65	115861	4.43	ug/L	0.00
Spiked Amount	5.000	Range	70 - 130	Recovery	=	88.60%
32) Benzene-d6	6.05	84	379977	5.63	ug/L	0.00
Spiked Amount	5.000	Range	70 - 125	Recovery	=	112.60%
36) 1,2-Dichloropropane-d6	7.37	67	114088	5.84	ug/L	0.00
Spiked Amount	5.000	Range	60 - 140	Recovery	=	116.80%
41) Toluene-d8	8.71	98	358588	5.39	ug/L	0.02
Spiked Amount	5.000	Range	70 - 130	Recovery	=	107.80%
45) trans-1,3-Dichloropropene-	9.00	79	51685	4.92	ug/L	0.00
Spiked Amount	5.000	Range	55 - 130	Recovery	=	98.40%
48) 2-Hexanone-d5	9.43	63	228559	64.93	ug/L	0.00
Spiked Amount	50.000	Range	45 - 130	Recovery	=	129.86%
59) 1,1,2,2-Tetrachloroethane-	11.25	84	85751	5.40	ug/L	0.02
Spiked Amount	5.000	Range	65 - 120	Recovery	=	108.00%
65) 1,2-Dichlorobenzene-d4	12.37	152	128671	5.36	ug/L	0.00
Spiked Amount	5.000	Range	80 - 120	Recovery	=	107.20%

Target Compounds

Target Compounds	R.T.	QIon	Response	Conc	Units	Ovalue
3) Chloromethane	1.34	50	19260	1.313	ug/L #	51
5) Vinyl chloride	1.39	62	484507	29.605	ug/L #	60
8) Chloroethane	1.72	64	77716	7.829	ug/L #	79
10) 1,1,2-Trichloro-1,2,2-trif	2.37	101	5145	0.302	ug/L #	72
12) 1,1-Dichloroethene	2.36	96	324951	21.507	ug/L #	55
13) Acetone	2.45	43	31997	12.611	ug/L	88
14) Carbon disulfide	2.55	76	43293	0.916	ug/L	96
15) Methyl Acetate	2.87	43	13831840	2218.041	ug/L #	48
16) Methylene chloride	2.82	84	2747	0.150	ug/L #	1
17) Methyl tert-butyl Ether	3.17	73	6772	0.174	ug/L #	1
18) trans-1,2-Dichloroethene	3.14	96	231203	14.291	ug/L	93
19) 1,1-Dichloroethane	3.67	63	3871821	134.623	ug/L	97
21) 2-Butanone	4.40	43	2370775	641.850	ug/L #	74
22) cis-1,2-Dichloroethene	4.57	96	25155938	1507.771	ug/L #	80
25) Chloroform	5.26	83	5677	0.173	ug/L #	53
27) 1,2-Dichloroethane	6.17	62	3154	0.132	ug/L #	49
30) Cyclohexane	5.56	56	3426721	153.704	ug/L	97

Data Path : Z:\VOASRV\HPCHEM1\MSVOA X\DATA\ VX100220\
 Data File : VX018758.D
 Acq On : 02 Oct 2020 19:29
 Operator : JC/SP
 Sample : L4239-05
 Misc : 25.0mL/MSVOA X/WATER
 ALS Vial : 23 Sample Multiplier: 1

Instrument :
 MSVOA_X
 ClientSampleId :
 BG3N5

Quant Time: Oct 03 05:23:38 2020
 Quant Method : Z:\VOASRV\HPCHEM1\MSVOA_X\METHOD\SOMXTR100220WMA.M
 Quant Title : TRACE VOA SOM01.0
 QLast Update : Fri Oct 02 14:11:08 2020
 Response via : Initial Calibration

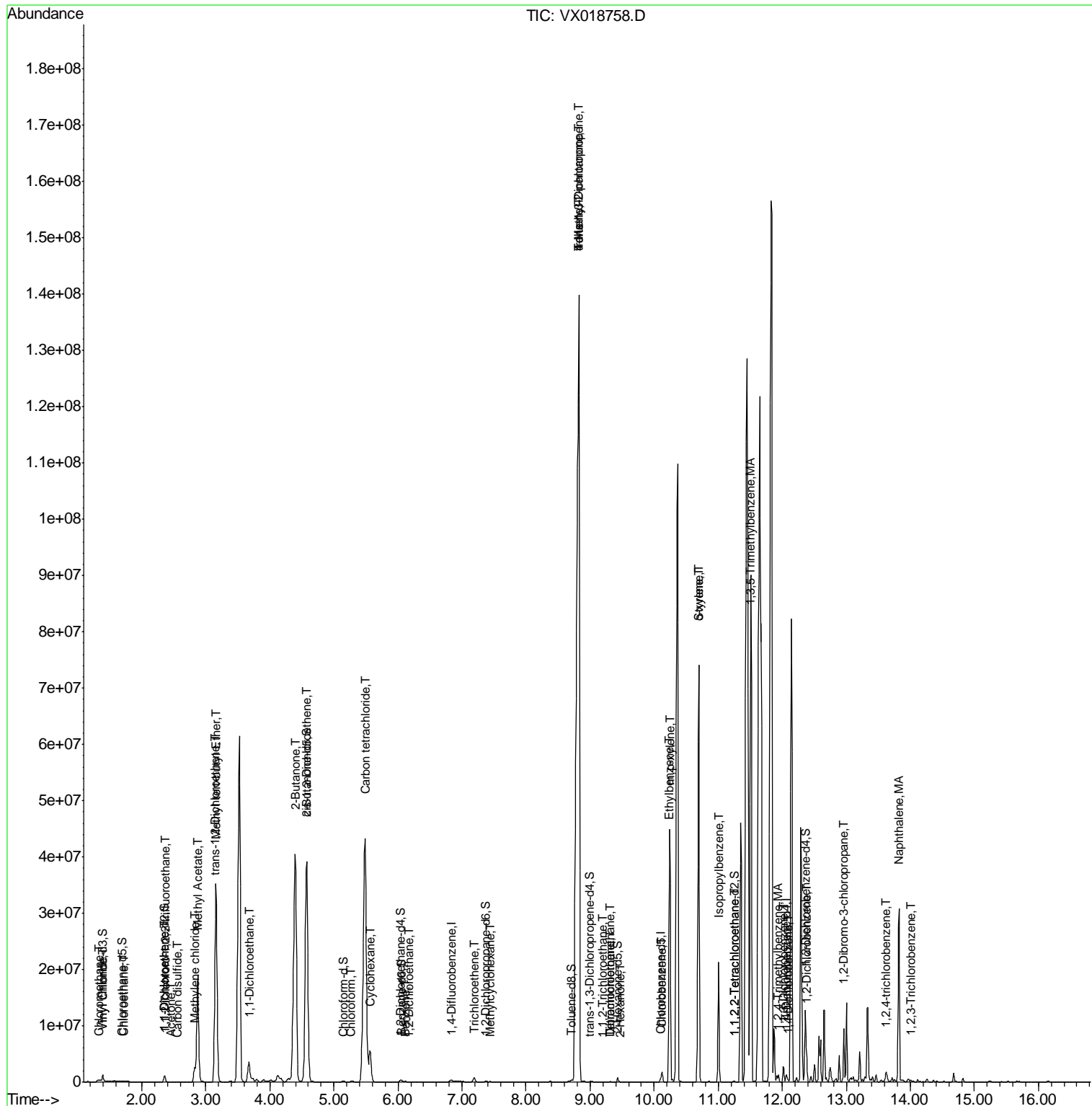
Internal Standards	R.T.	QIon	Response	Conc	Units	Dev(Min)
31) Carbon tetrachloride	5.49	117	4779176	161.205	ug/L	96
33) Benzene	6.11	78	123924	2.178	ug/L	100
34) Trichloroethene	7.19	95	275864	16.420	ug/L	97
35) Methylcyclohexane	7.44	83	38319	1.610	ug/L #	88
40) 4-Methyl-2-pentanone	8.83	43	2297559	278.218	ug/L #	44
42) Toluene	8.82	91	19208750	308.511	ug/L	90
43) 1,3,5-Trimethylbenzene	11.50	105	3117797	52.908	ug/L #	1
44) 1,2,4-Trimethylbenzene	11.94	105	613042	10.249	ug/L #	1
46) trans-1,3-Dichloropropene	8.82	75	2734563	130.172	ug/L #	1
47) 1,1,2-Trichloroethane	9.20	97	4169	0.388	ug/L #	86
49) Tetrachloroethene	9.32	164	13996	0.953	ug/L	91
50) 2-Hexanone	9.48	43	9787	1.632	ug/L #	82
51) Dibromochloromethane	9.32	129	14088	0.901	ug/L #	10
53) Chlorobenzene	10.12	112	769508	18.068	ug/L	92
54) Ethylbenzene	10.23	91	17896135	256.406	ug/L	87
55) m,p-xylene	10.24	106	9602687	352.716	ug/L #	45
56) o-xylene	10.69	106	15826815	629.064	ug/L #	26
57) Styrene	10.70	104	1086112	25.306	ug/L #	1
58) Isopropylbenzene	11.01	105	11202883	159.052	ug/L	97
60) 1,1,2,2-Tetrachloroethane	11.26	83	2339	0.196	ug/L #	33
63) 1,3-Dichlorobenzene	12.02	146	114217	3.611	ug/L	97
64) 1,4-Dichlorobenzene	12.09	146	137707	4.366	ug/L	97
66) 1,2-Dichlorobenzene	12.38	146	1085445	36.755	ug/L	97
67) 1,2-Dibromo-3-chloropropan	12.96	75	29983	11.913	ug/L #	7
69) 1,2,4-trichlorobenzene	13.63	180	128613	6.363	ug/L #	94
70) Naphthalene	13.82	128	14477237	438.228	ug/L #	86
71) 1,2,3-Trichlorobenzene	14.00	180	60074	3.303	ug/L	97

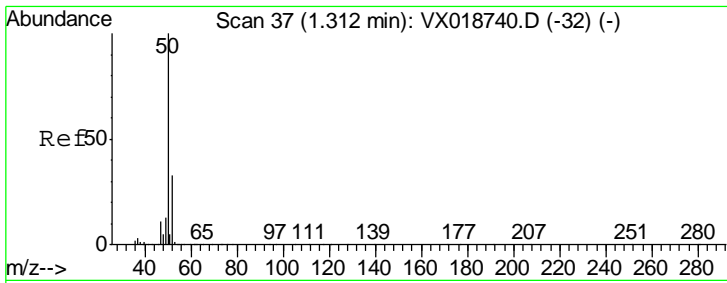
(#) = qualifier out of range (m) = manual integration (+) = signals summed

Data Path : Z:\VOASRV\HPCHEM1\MSVOA X\DATA\VX100220\
 Data File : VX018758.D
 Acq On : 02 Oct 2020 19:29
 Operator : JC/SP
 Sample : L4239-05
 Misc : 25.0mL/MSVOA X/WATER
 ALS Vial : 23 Sample Multiplier: 1

Instrument :
 MSVOA_X
 Client Sampled :
 BG3N5

Quant Time: Oct 03 05:23:38 2020
 Quant Method : Z:\VOASRV\HPCHEM1\MSVOA_X\METHOD\SOMXTR100220WMA.M
 Quant Title : TRACE VOA SOM01.0
 QLast Update : Fri Oct 02 14:11:08 2020
 Response via : Initial Calibration

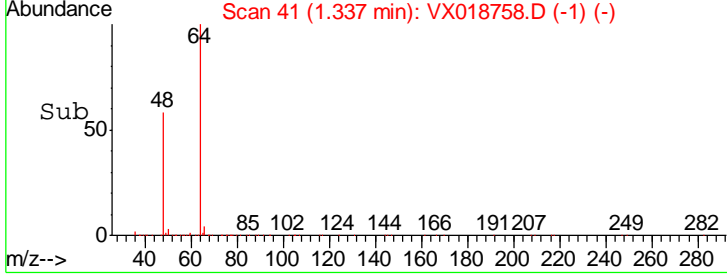
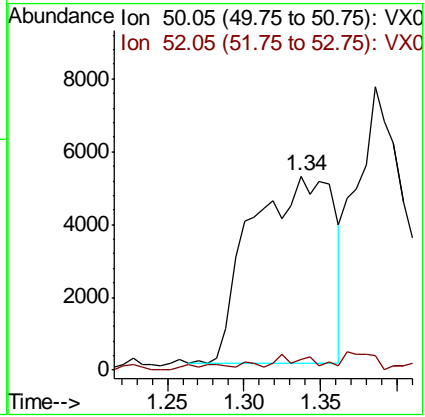
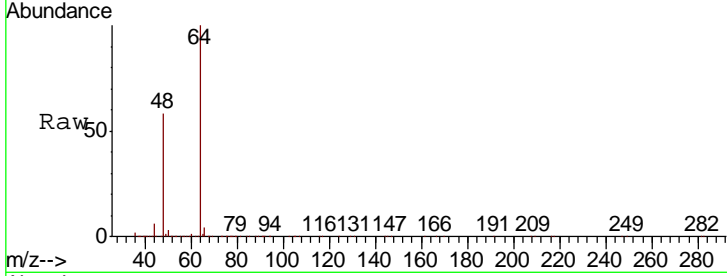




#3
 Chloromethane
 Concen: 1.313 ug/L
 RT: 1.34 min Scan# 41
 Delta R.T. 0.02 min
 Lab File: VX018758.D
 Acq: 02 Oct 2020 19:29

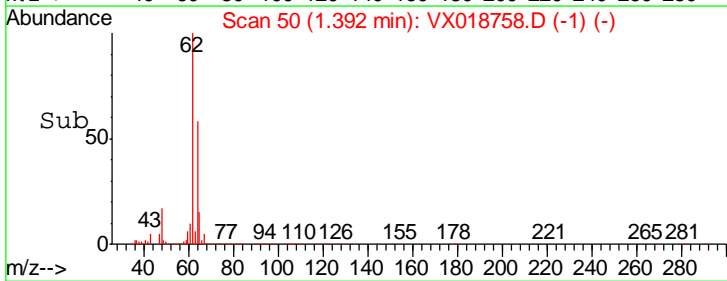
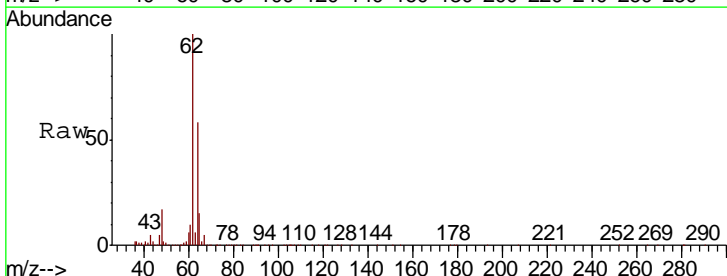
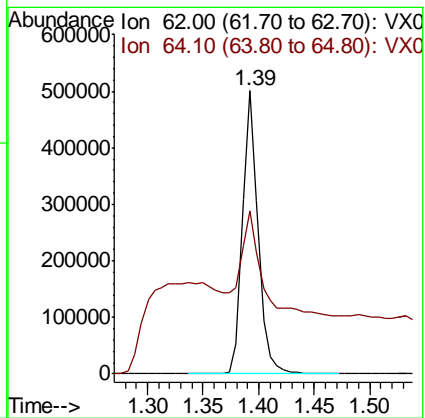
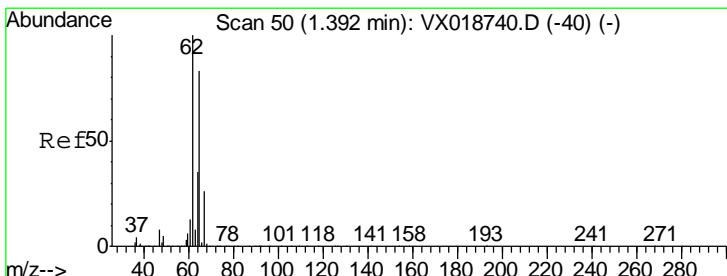
Instrument :
 MSVOA_X
ClientSampled :
 BG3N5

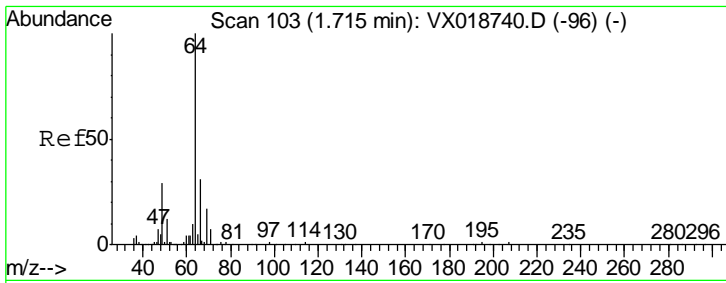
Tgt Ion	Resp	Lower	Upper
50	19260		
52	5.4	23.4	43.6#



#5
 Vinyl chloride
 Concen: 29.605 ug/L
 RT: 1.39 min Scan# 50
 Delta R.T. 0.00 min
 Lab File: VX018758.D
 Acq: 02 Oct 2020 19:29

Tgt Ion	Resp	Lower	Upper
62	484507		
64	57.8	24.3	45.1#

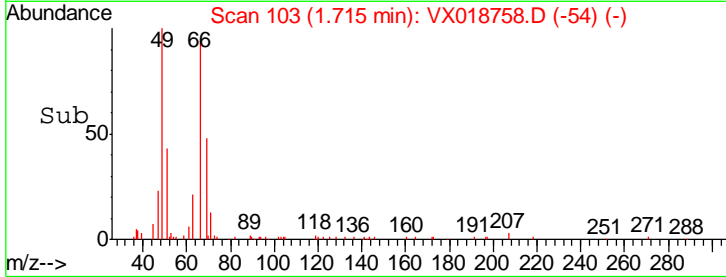
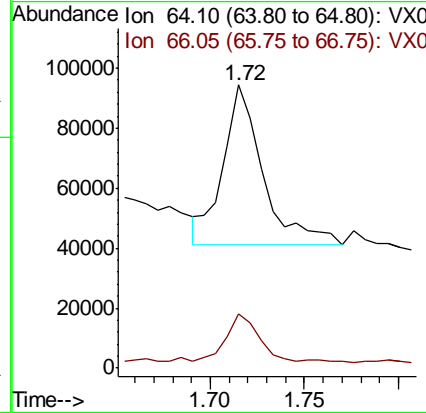
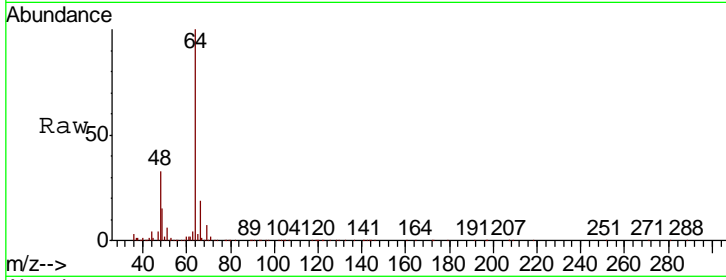




#8
 Chloroethane
 Concen: 7.829 ug/L
 RT: 1.72 min Scan# 103
 Delta R.T. 0.00 min
 Lab File: VX018758.D
 Acq: 02 Oct 2020 19:29

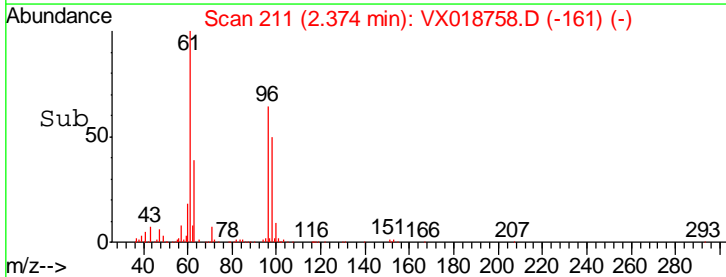
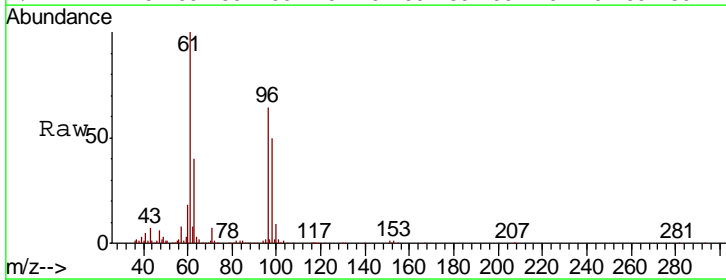
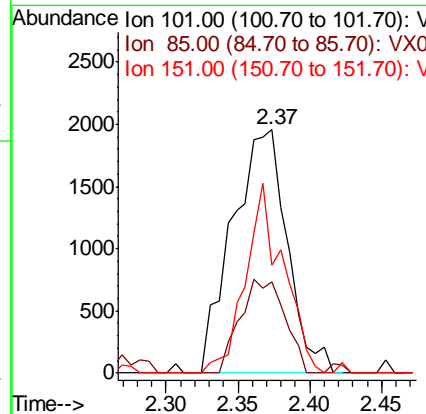
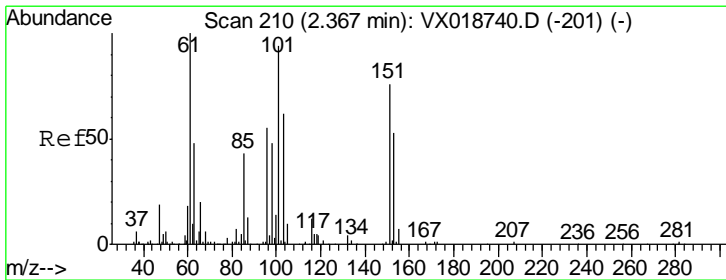
Instrument :
 MSVOA_X
 ClientSampled :
 BG3N5

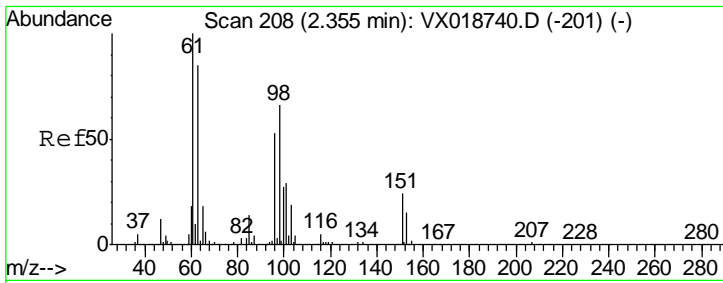
Tgt Ion	Resp	Lower	Upper
64	100		
66	19.3	21.5	39.9#



#10
 1,1,2-Trichloro-1,2,2-trifluoroethane
 Concen: 0.302 ug/L
 RT: 2.37 min Scan# 211
 Delta R.T. 0.01 min
 Lab File: VX018758.D
 Acq: 02 Oct 2020 19:29

Tgt Ion	Resp	Lower	Upper
101	100		
85	31.5	37.1	55.7#
151	53.8	65.0	97.6#

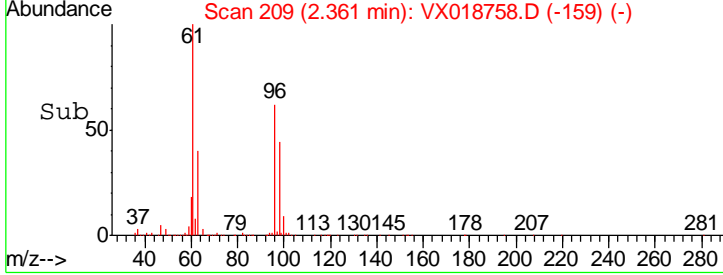
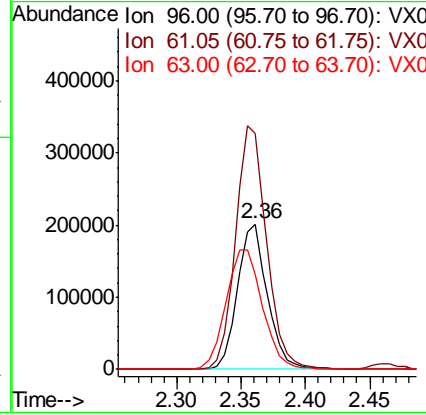
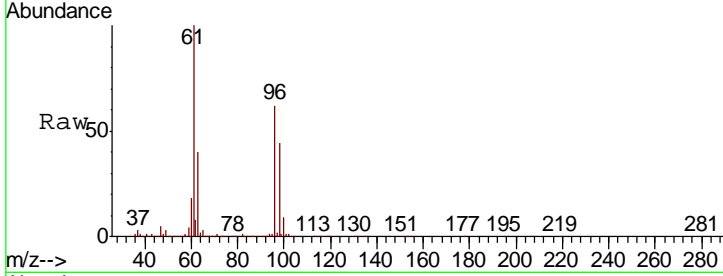




#12
 1,1-Dichloroethene
 Concen: 21.507 ug/L
 RT: 2.36 min Scan# 209
 Delta R.T. 0.01 min
 Lab File: VX018758.D
 Acq: 02 Oct 2020 19:29

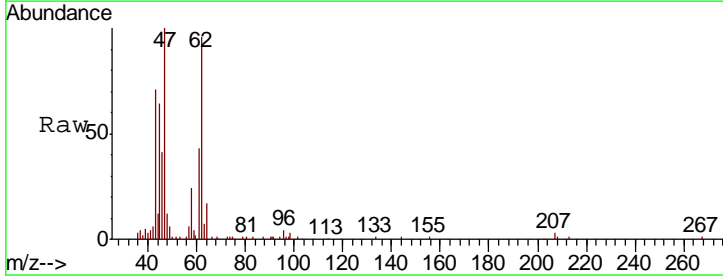
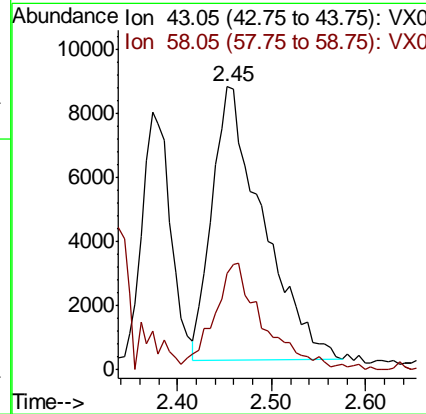
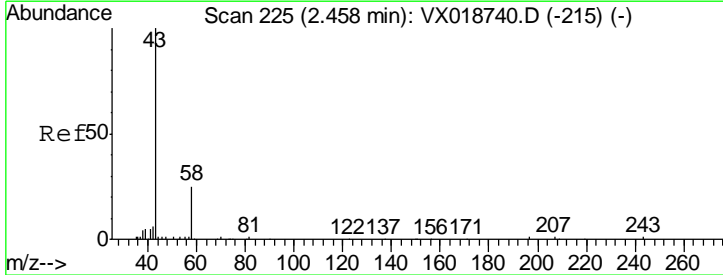
Instrument :
 MSVOA_X
ClientSampled :
 BG3N5

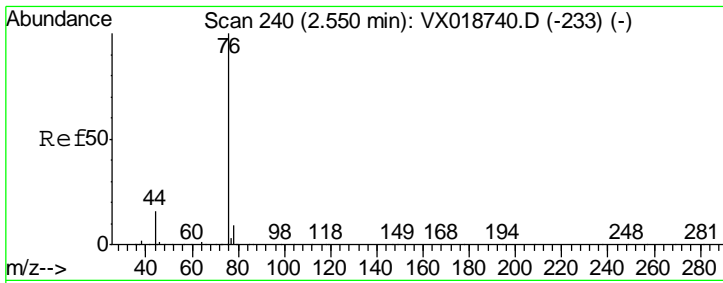
Tgt Ion	Resp	Lower	Upper
96	324951		
96	100		
61	162.3	133.2	247.4
63	65.1	115.1	213.7#



#13
 Acetone
 Concen: 12.611 ug/L
 RT: 2.45 min Scan# 224
 Delta R.T. -0.01 min
 Lab File: VX018758.D
 Acq: 02 Oct 2020 19:29

Tgt Ion	Resp	Lower	Upper
43	31997		
43	100		
58	34.6	0.0	56.4

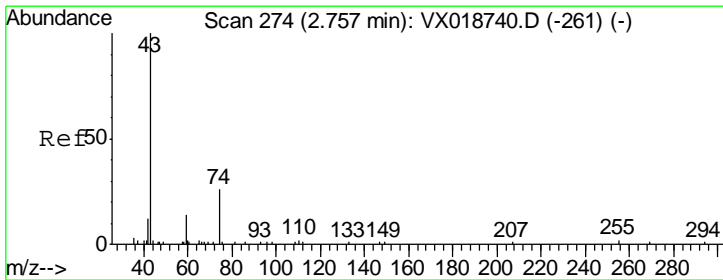
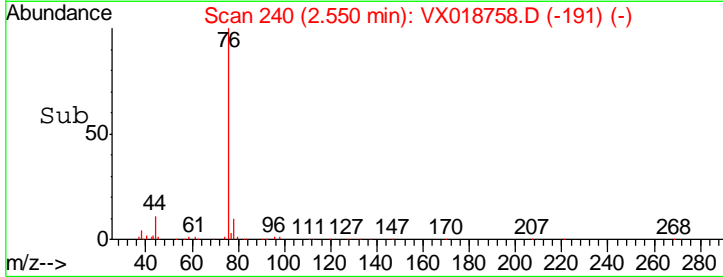
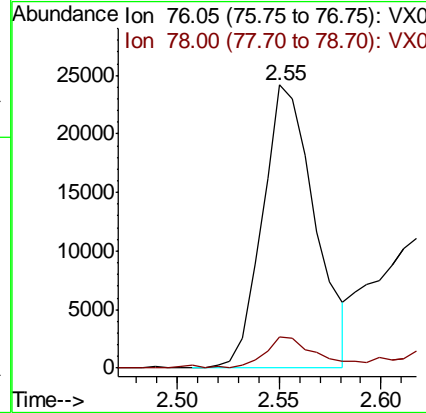
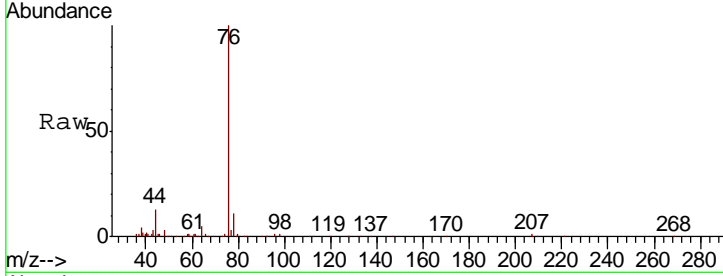




#14
 Carbon disulfide
 Concen: 0.916 ug/L
 RT: 2.55 min Scan# 240
 Delta R.T. 0.00 min
 Lab File: VX018758.D
 Acq: 02 Oct 2020 19:29

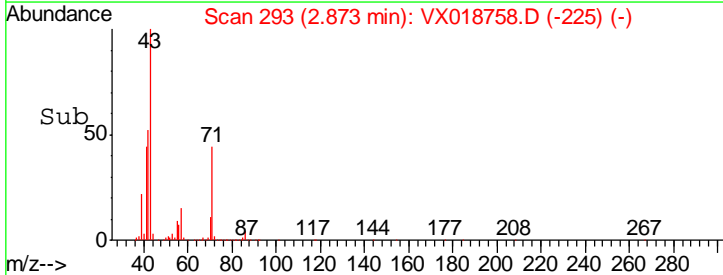
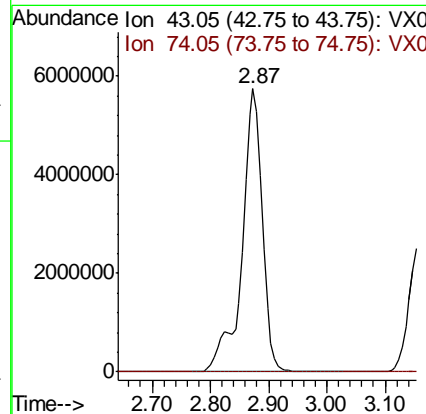
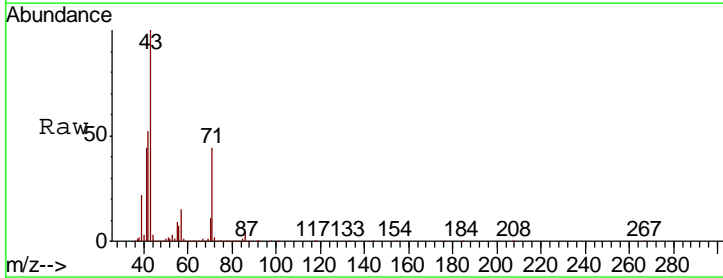
Instrument :
 MSVOA_X
 ClientSampled :
 BG3N5

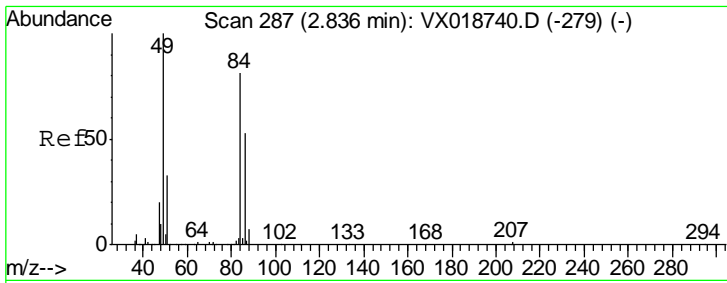
Tgt Ion	Resp	Lower	Upper
76	43293		
78	10.9	7.4	11.2



#15
 Methyl Acetate
 Concen: 2218.041 ug/L
 RT: 2.87 min Scan# 293
 Delta R.T. 0.12 min
 Lab File: VX018758.D
 Acq: 02 Oct 2020 19:29

Tgt Ion	Resp	Lower	Upper
43	13831840		
74	0.1	21.9	32.9#

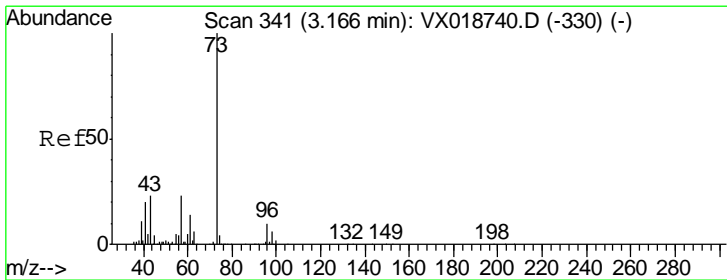
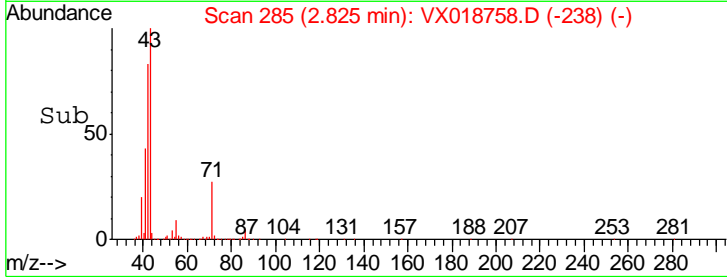
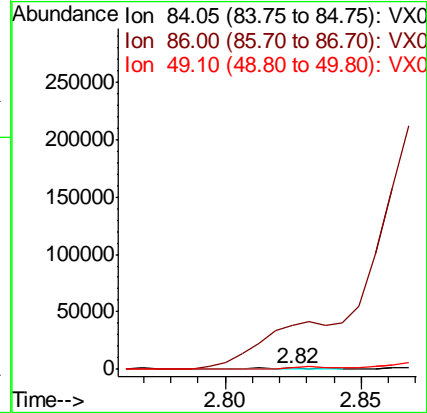
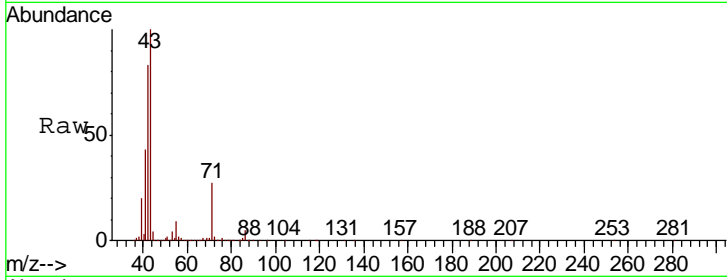




#16
 Methylene chloride
 Concen: 0.150 ug/L
 RT: 2.82 min Scan# 285
 Delta R.T. -0.01 min
 Lab File: VX018758.D
 Acq: 02 Oct 2020 19:29

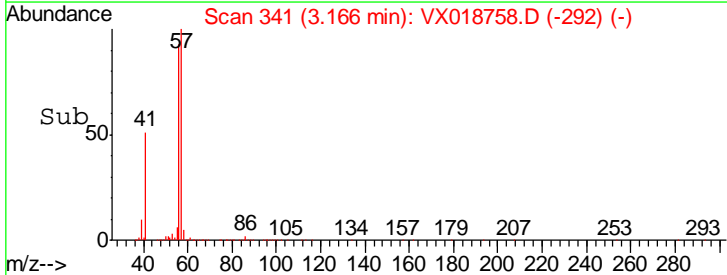
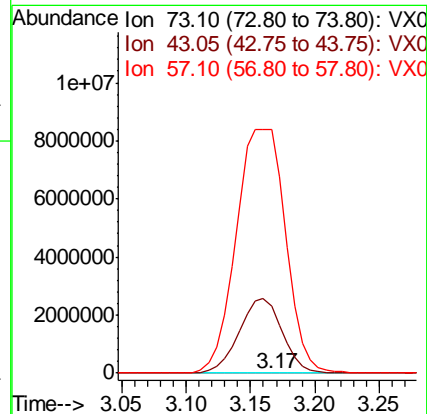
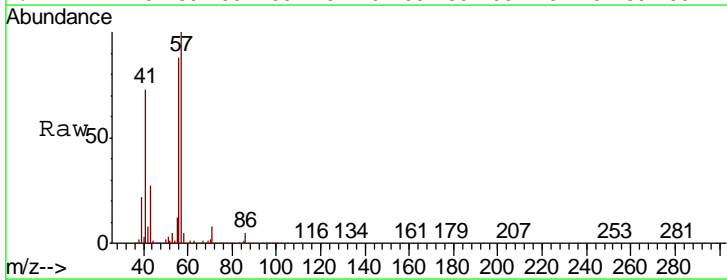
Instrument :
 MSVOA_X
 ClientSampled :
 BG3N5

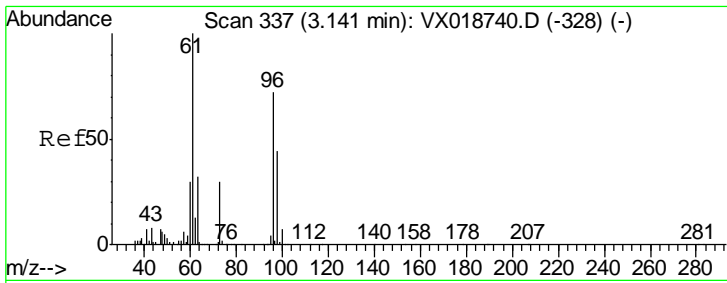
Tgt Ion	Resp	Lower	Upper
84	100		
86	3356.9	45.6	84.8#
49	131.5	85.8	159.3



#17
 Methyl tert-butyl Ether
 Concen: 0.174 ug/L
 RT: 3.17 min Scan# 341
 Delta R.T. 0.00 min
 Lab File: VX018758.D
 Acq: 02 Oct 2020 19:29

Tgt Ion	Resp	Lower	Upper
73	100		
43	88171.2	19.4	29.0#
57	330846.5	17.2	25.8#

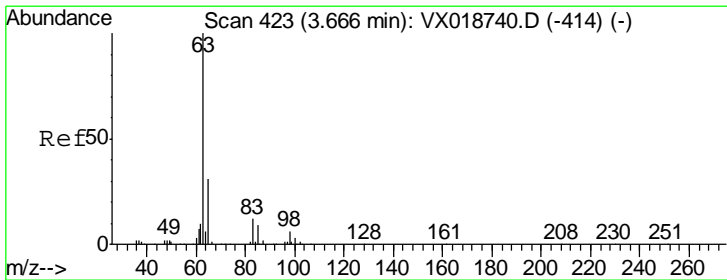
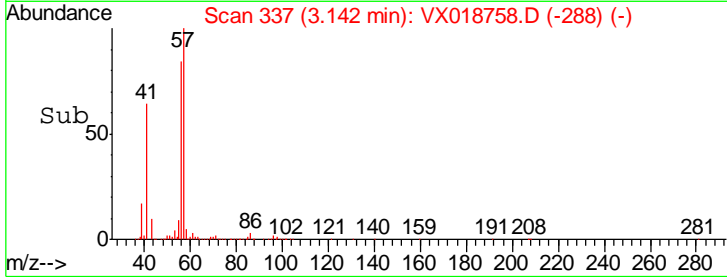
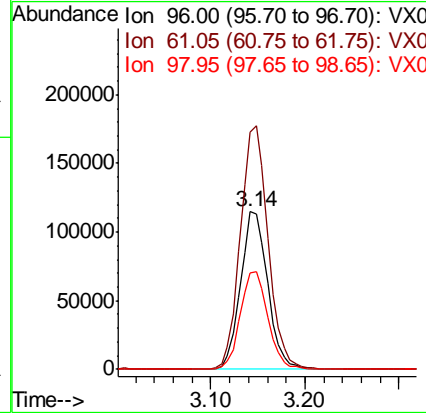
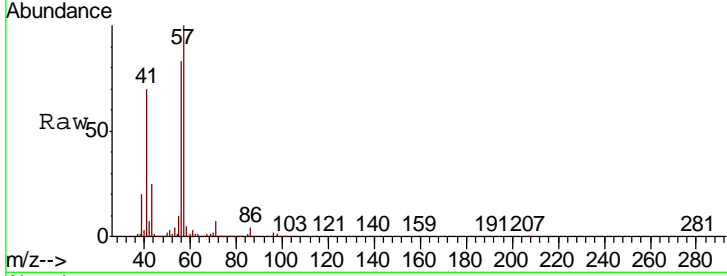




#18
 trans-1,2-Dichloroethene
 Concen: 14.291 ug/L
 RT: 3.14 min Scan# 337
 Delta R.T. 0.00 min
 Lab File: VX018758.D
 Acq: 02 Oct 2020 19:29

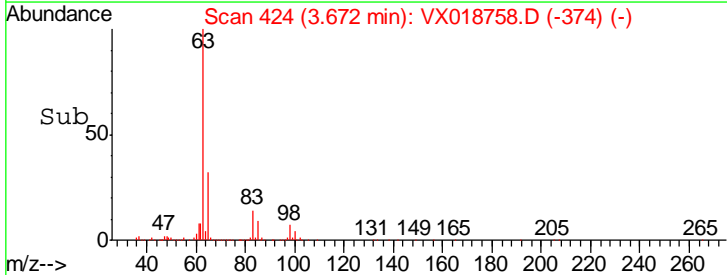
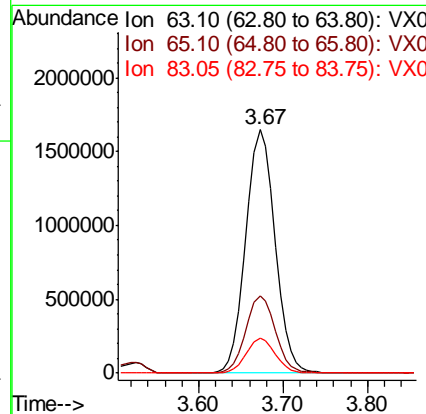
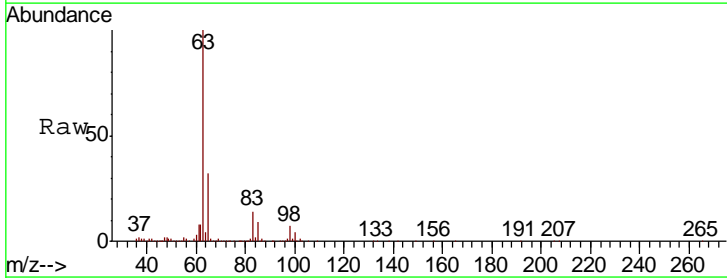
Instrument :
 MSVOA_X
 ClientSampleID :
 BG3N5

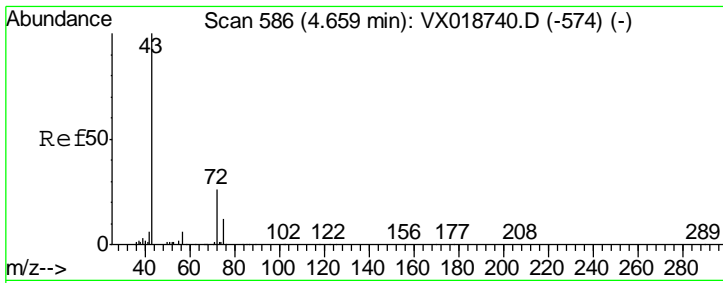
Tgt Ion	Resp	Lower	Upper
96	231203		
61	151.2	97.6	181.4
98	61.4	43.1	80.1



#19
 1,1-Dichloroethane
 Concen: 134.623 ug/L
 RT: 3.67 min Scan# 424
 Delta R.T. 0.01 min
 Lab File: VX018758.D
 Acq: 02 Oct 2020 19:29

Tgt Ion	Resp	Lower	Upper
63	3871821		
65	31.9	21.6	40.2
83	14.2	8.7	16.1

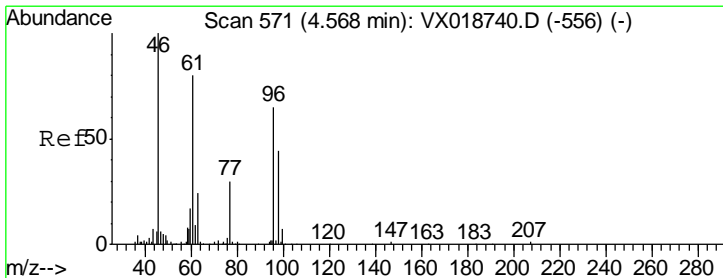
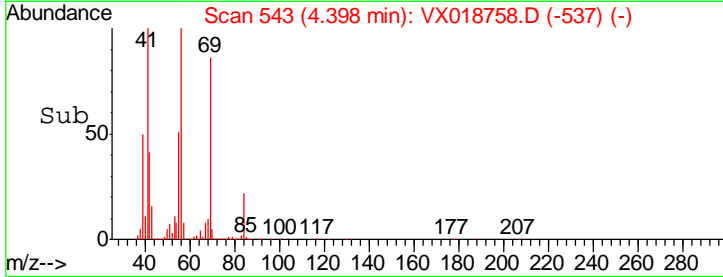
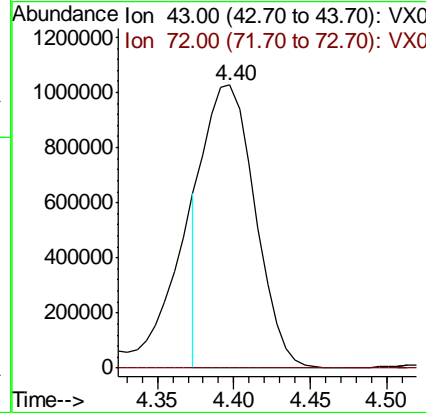
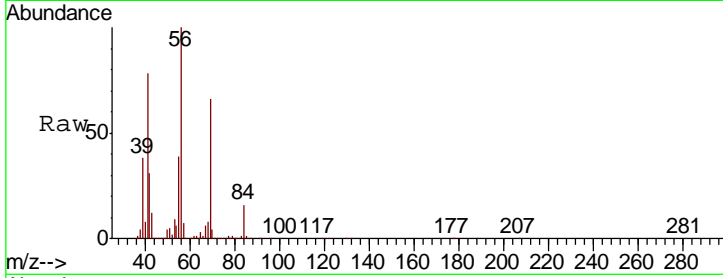




#21
 2-Butanone
 Concen: 641.850 ug/L
 RT: 4.40 min Scan# 543
 Delta R.T. -0.26 min
 Lab File: VX018758.D
 Acq: 02 Oct 2020 19:29

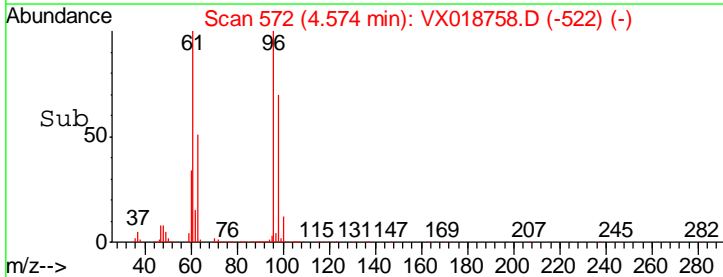
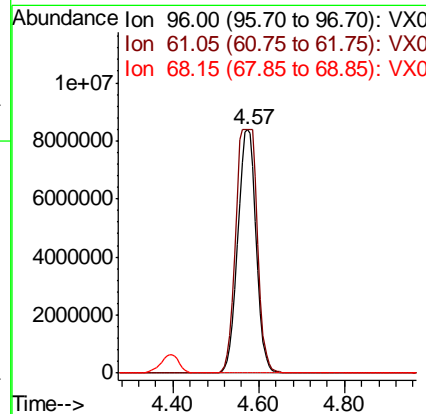
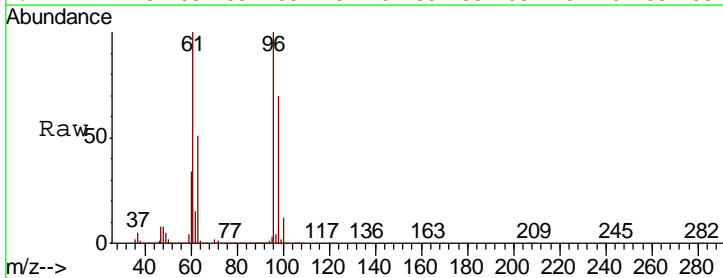
Instrument :
 MSVOA_X
 ClientSampled :
 BG3N5

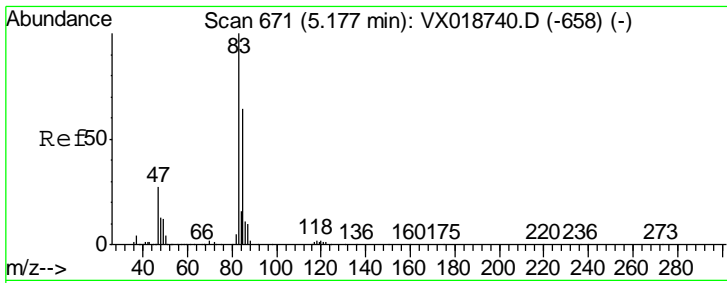
Tgt Ion: 43 Resp: 2370775
 Ion Ratio Lower Upper
 43 100
 72 11.9 12.4 37.2#



#22
 cis-1,2-Dichloroethene
 Concen: 1507.771 ug/L
 RT: 4.57 min Scan# 572
 Delta R.T. 0.01 min
 Lab File: VX018758.D
 Acq: 02 Oct 2020 19:29

Tgt Ion: 96 Resp: 25155938
 Ion Ratio Lower Upper
 96 100
 61 100.0 86.2 160.0
 68 0.0 0.3 0.7#

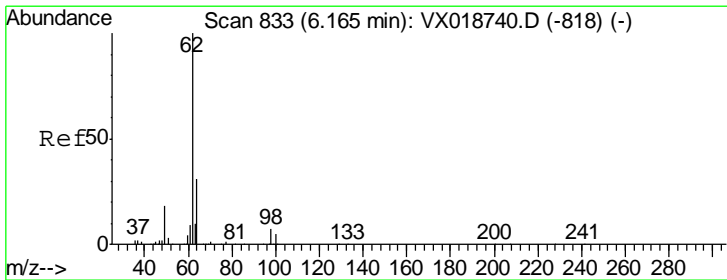
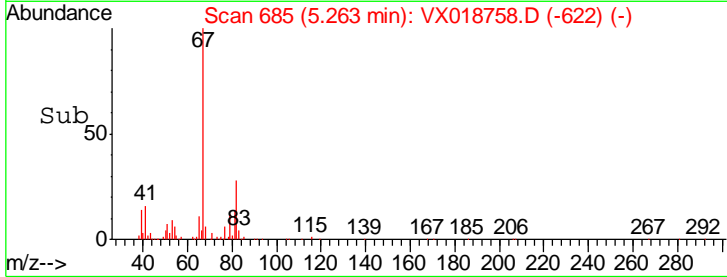
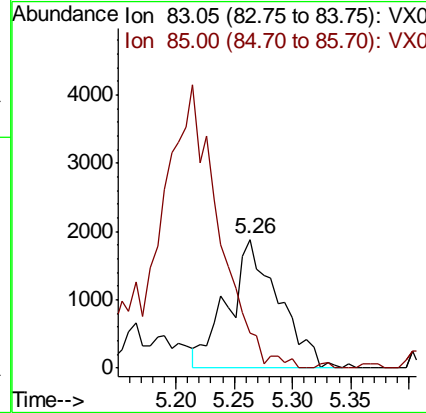
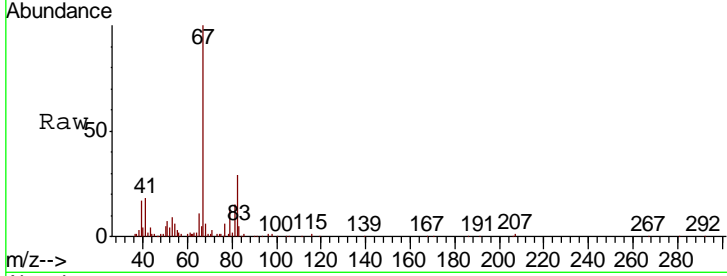




#25
 Chloroform
 Concen: 0.173 ug/L
 RT: 5.26 min Scan# 685
 Delta R.T. 0.09 min
 Lab File: VX018758.D
 Acq: 02 Oct 2020 19:29

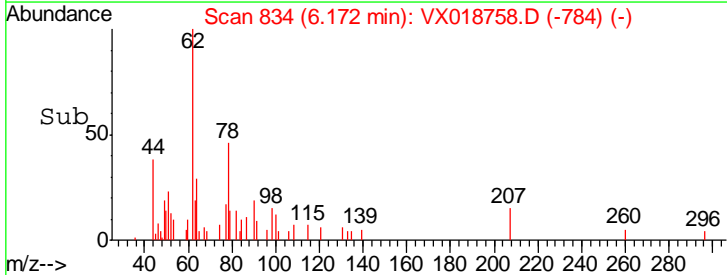
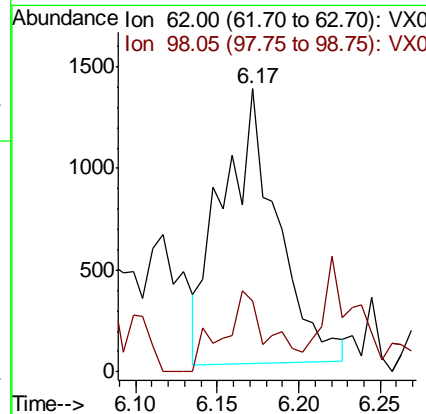
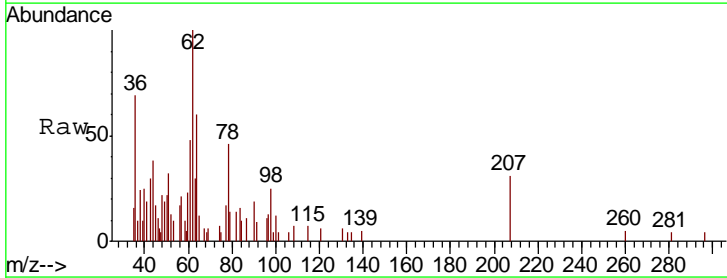
Instrument :
 MSVOA_X
 ClientSampled :
 BG3N5

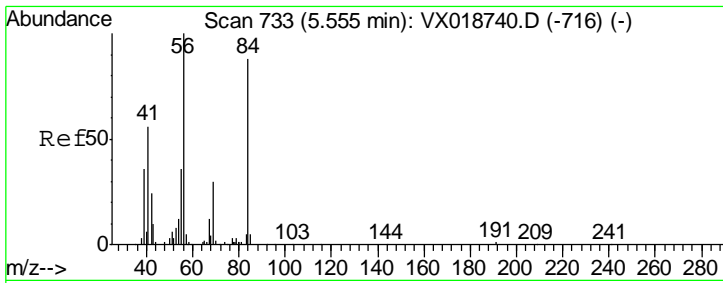
Tgt Ion: 83 Resp: 5677
 Ion Ratio Lower Upper
 83 100
 85 26.7 44.6 82.8#



#27
 1,2-Dichloroethane
 Concen: 0.132 ug/L
 RT: 6.17 min Scan# 834
 Delta R.T. 0.01 min
 Lab File: VX018758.D
 Acq: 02 Oct 2020 19:29

Tgt Ion: 62 Resp: 3154
 Ion Ratio Lower Upper
 62 100
 98 25.1 5.8 8.8#



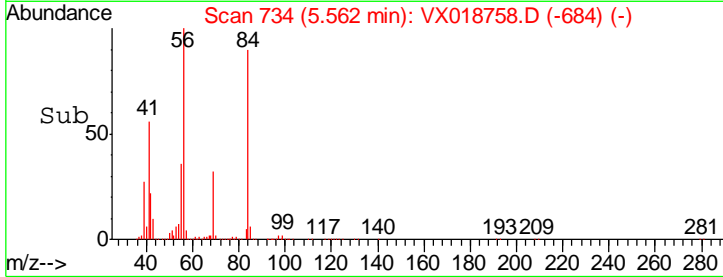
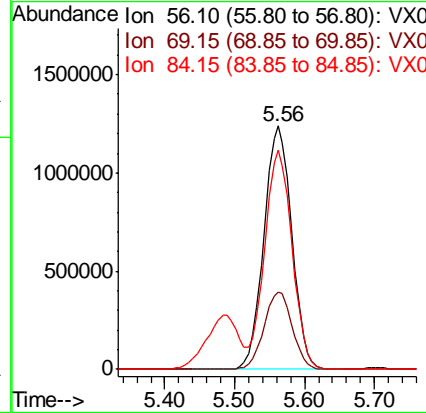
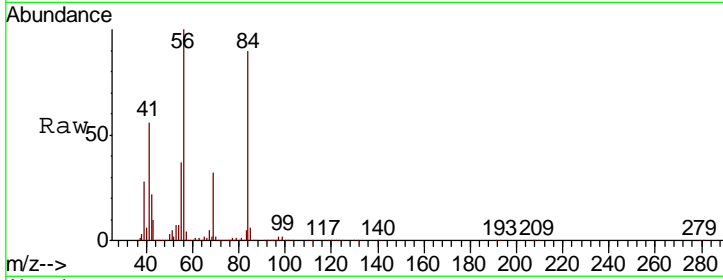


#30
 Cyclohexane
 Concen: 153.704 ug/L
 RT: 5.56 min Scan# 734
 Delta R.T. 0.01 min
 Lab File: VX018758.D
 Acq: 02 Oct 2020 19:29

Instrument :
 MSVOA_X
ClientSampled :
 BG3N5

Tgt Ion: 56 Resp: 3426721

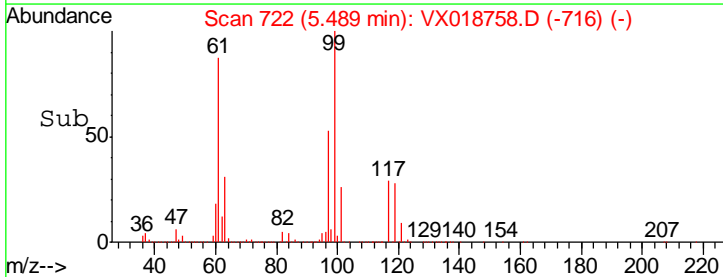
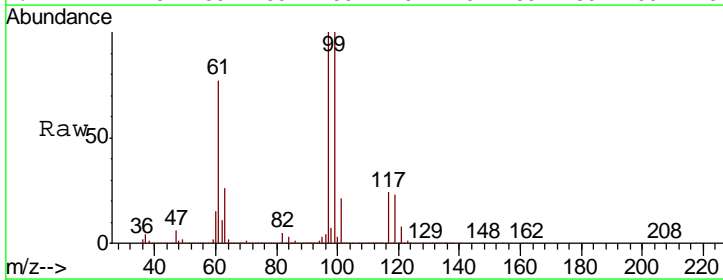
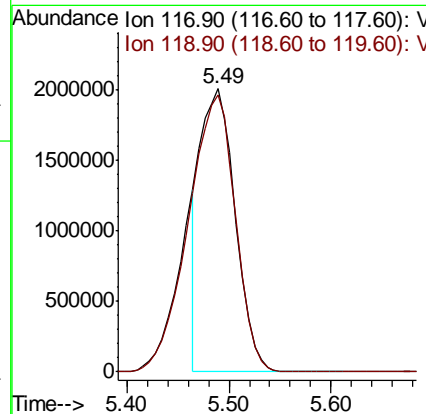
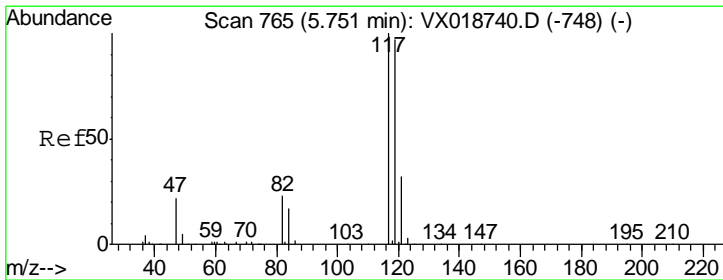
Ion	Ratio	Lower	Upper
56	100		
69	32.1	26.0	39.0
84	88.1	73.8	110.6

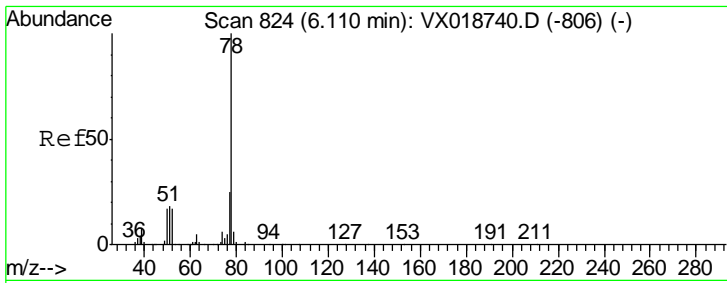


#31
 Carbon tetrachloride
 Concen: 161.205 ug/L
 RT: 5.49 min Scan# 722
 Delta R.T. -0.26 min
 Lab File: VX018758.D
 Acq: 02 Oct 2020 19:29

Tgt Ion: 117 Resp: 4779176

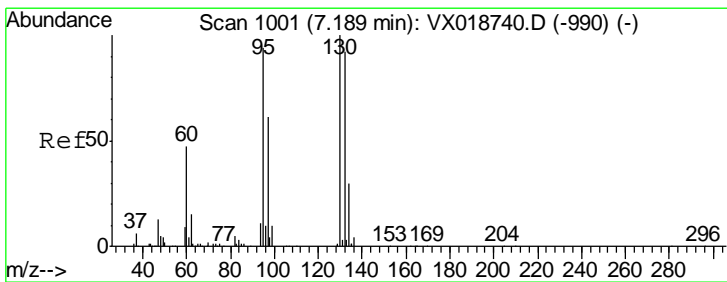
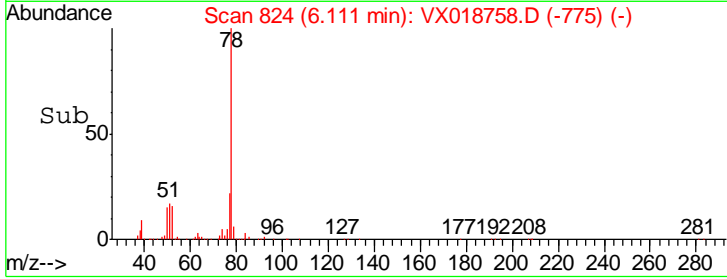
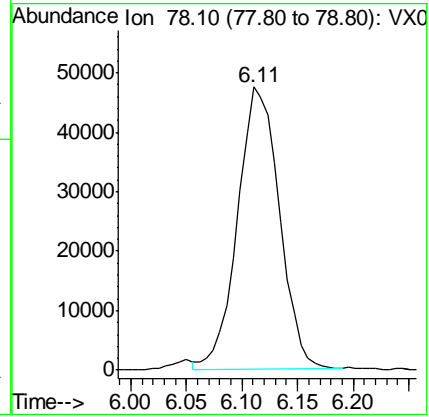
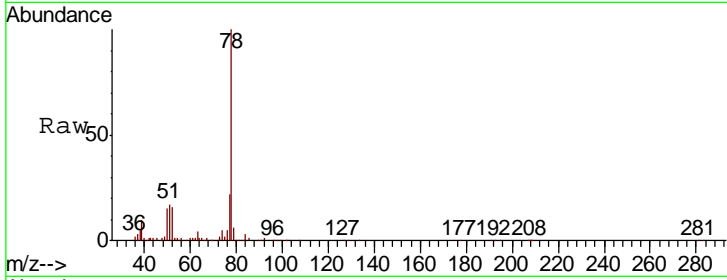
Ion	Ratio	Lower	Upper
117	100		
119	98.5	76.0	114.0





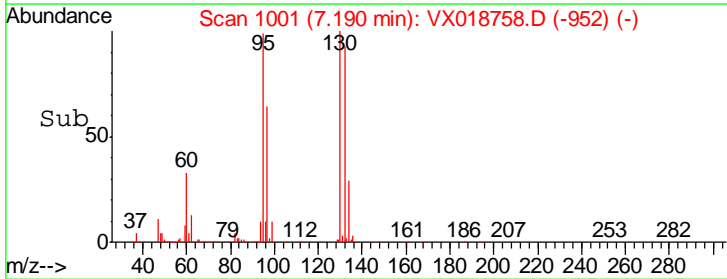
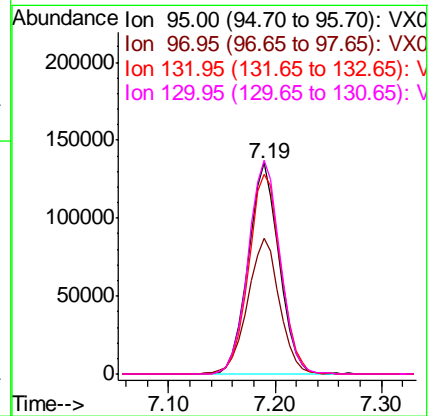
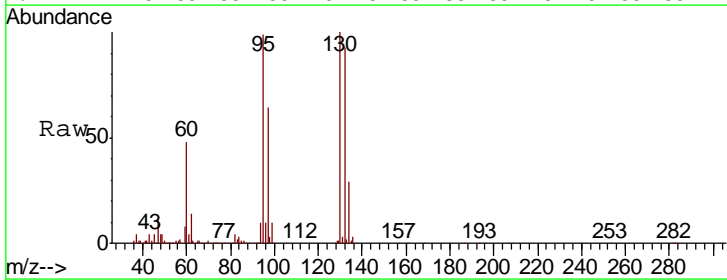
#33
 Benzene
 Concen: 2.178 ug/L
 RT: 6.11 min Scan# 824
 Delta R.T. 0.00 min
 Lab File: VX018758.D
 Acq: 02 Oct 2020 19:29
 Tgt Ion: 78 Resp: 123924

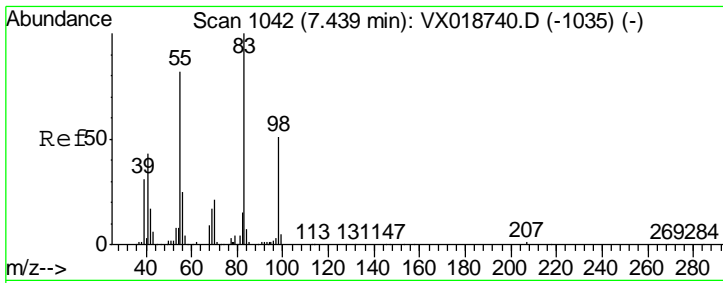
Instrument : MSVOA_X
 ClientSampled : BG3N5



#34
 Trichloroethene
 Concen: 16.420 ug/L
 RT: 7.19 min Scan# 1001
 Delta R.T. 0.00 min
 Lab File: VX018758.D
 Acq: 02 Oct 2020 19:29
 Tgt Ion: 95 Resp: 275864

Ion	Ratio	Lower	Upper
95	100		
97	64.7	45.3	84.1
132	94.8	68.6	127.4
130	101.4	74.5	138.3

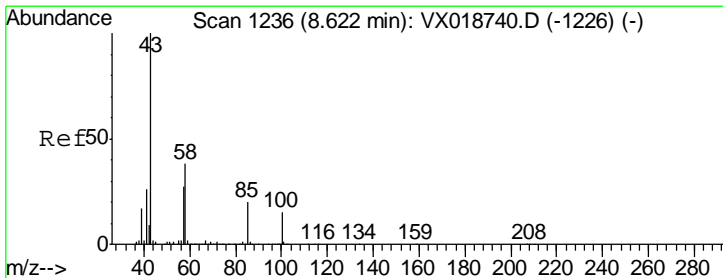
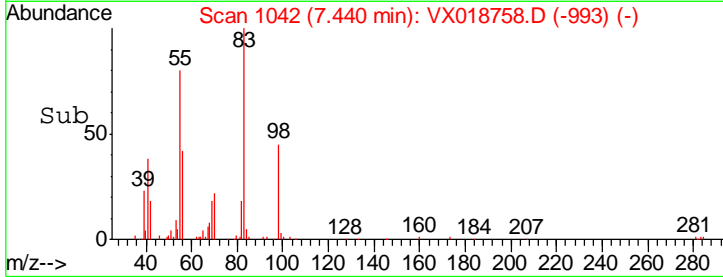
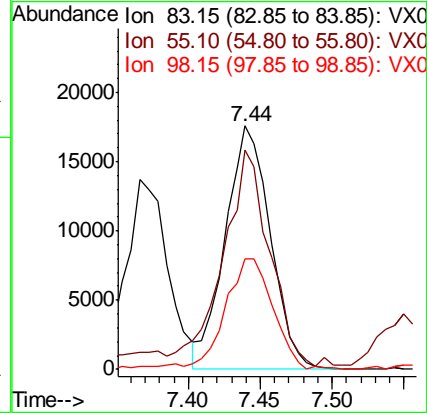
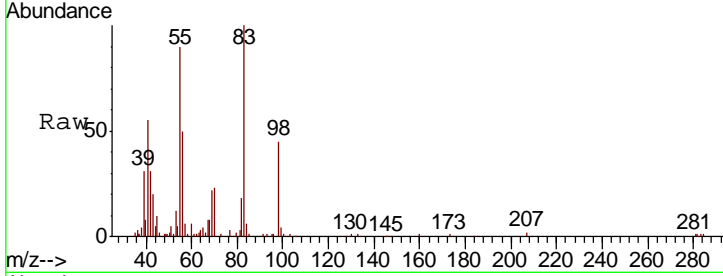




#35
 Methylcyclohexane
 Concen: 1.610 ug/L
 RT: 7.44 min Scan# 1042
 Delta R.T. 0.00 min
 Lab File: VX018758.D
 Acq: 02 Oct 2020 19:29

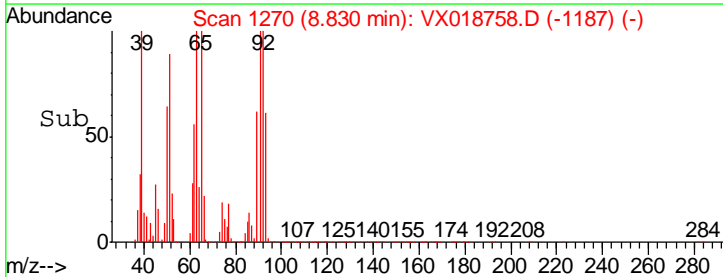
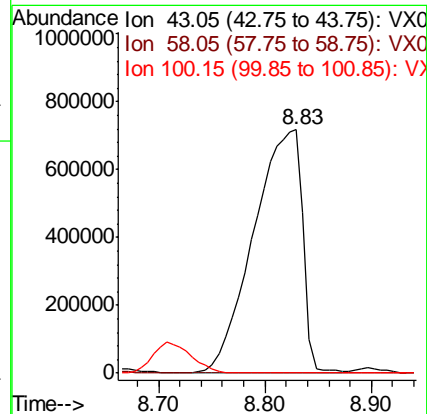
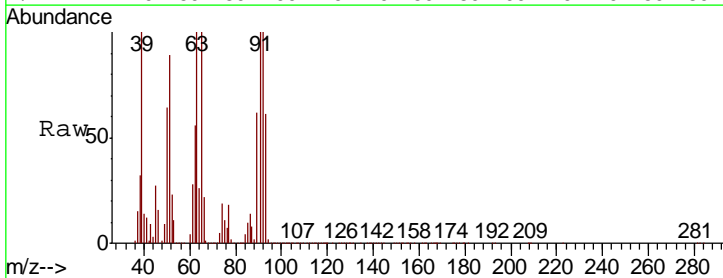
Instrument :
 MSVOA_X
 ClientSampled :
 BG3N5

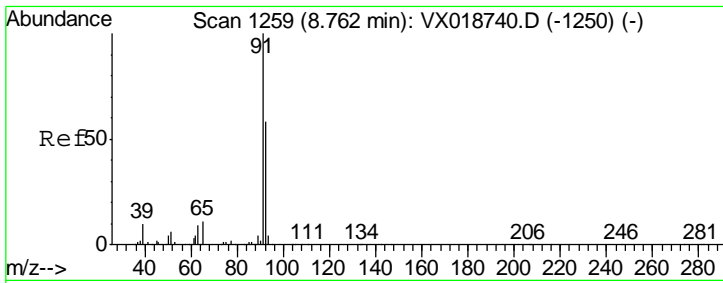
Tgt Ion	Resp	Lower	Upper
83	38319		
55	91.7	60.3	90.5#
98	49.3	39.4	59.0



#40
 4-Methyl-2-pentanone
 Concen: 278.218 ug/L
 RT: 8.83 min Scan# 1270
 Delta R.T. 0.21 min
 Lab File: VX018758.D
 Acq: 02 Oct 2020 19:29

Tgt Ion	Resp	Lower	Upper
43	2297559		
58	0.0	30.8	46.2#
100	0.0	13.2	19.8#



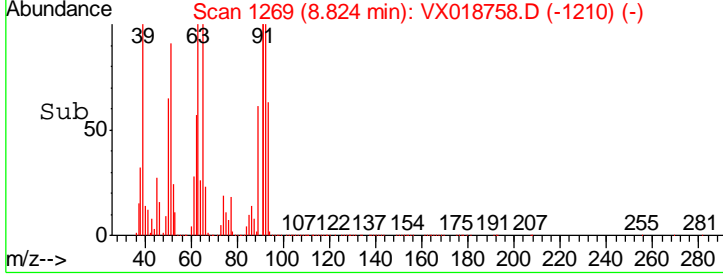
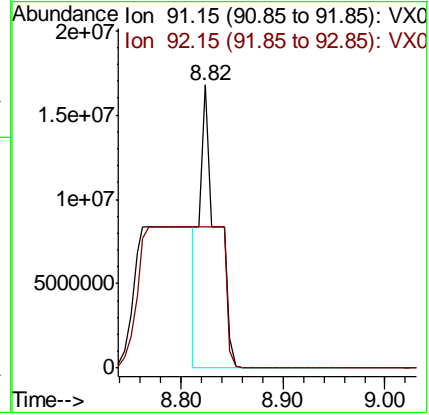
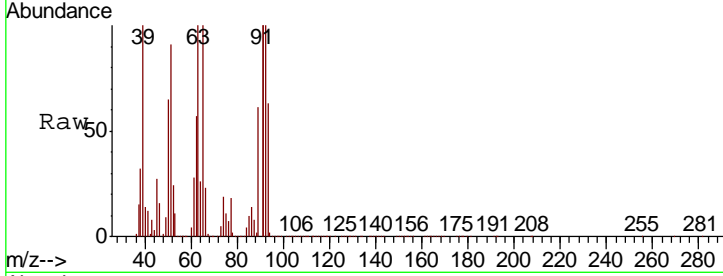


#42
 Toluene
 Concen: 308.511 ug/L
 RT: 8.82 min Scan# 1269
 Delta R.T. 0.06 min
 Lab File: VX018758.D
 Acq: 02 Oct 2020 19:29

Instrument :
 MSVOA_X
ClientSampled :
 BG3N5

Tgt Ion: 91 Resp: 19208750

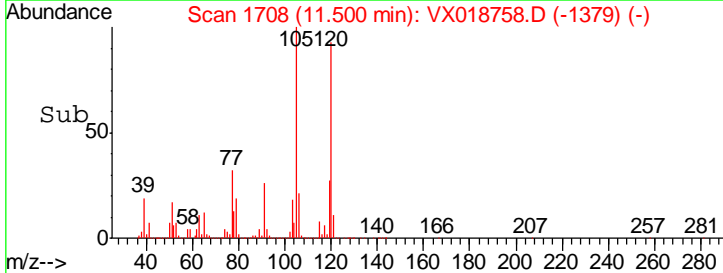
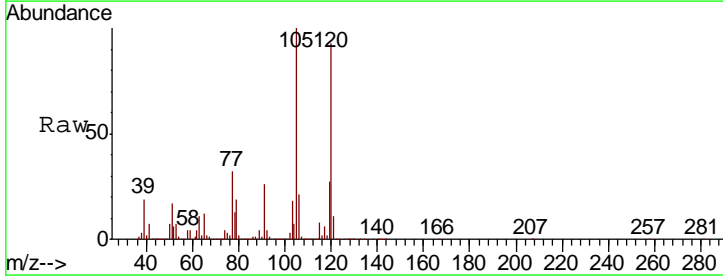
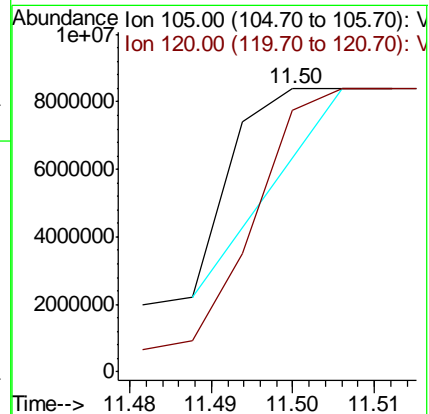
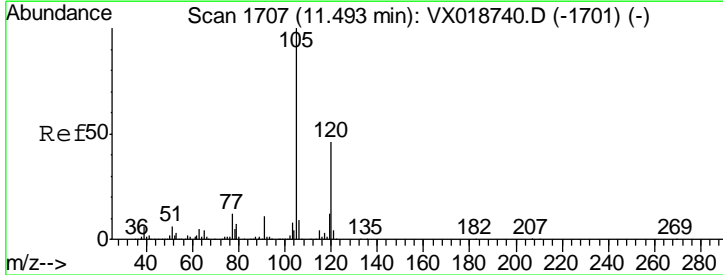
Ion	Ratio	Lower	Upper
91	100		
92	50.0	40.3	74.9

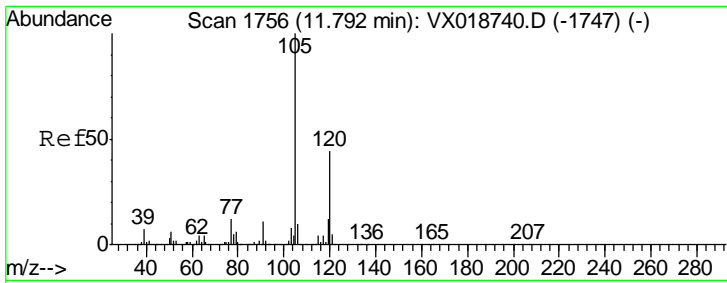


#43
 1,3,5-Trimethylbenzene
 Concen: 52.908 ug/L
 RT: 11.50 min Scan# 1708
 Delta R.T. 0.01 min
 Lab File: VX018758.D
 Acq: 02 Oct 2020 19:29

Tgt Ion: 105 Resp: 3117797

Ion	Ratio	Lower	Upper
105	100		
120	508.0	37.7	56.5#

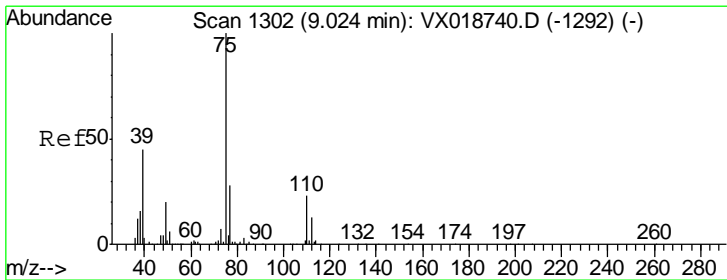
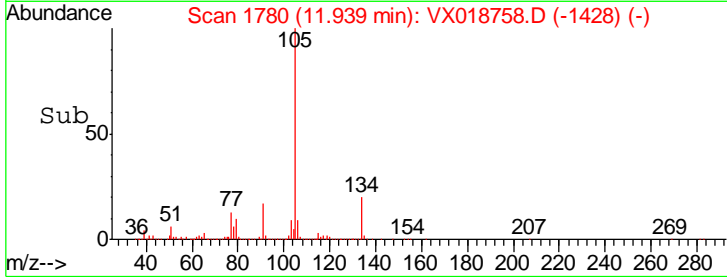
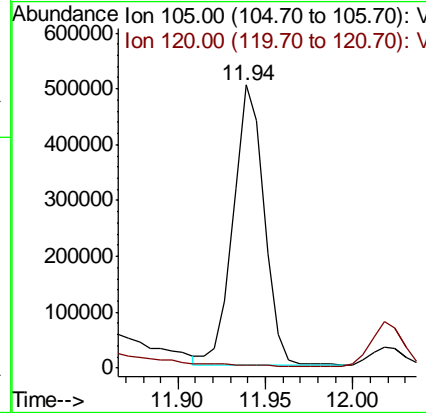
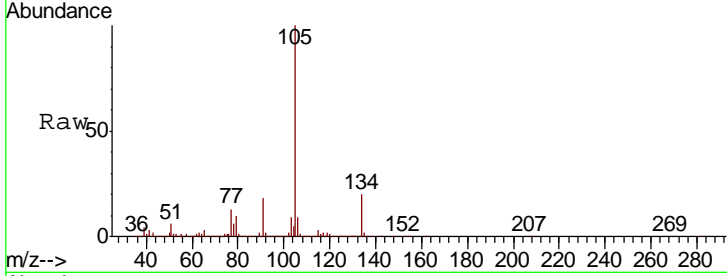




#44
 1,2,4-Trimethylbenzene
 Concen: 10.249 ug/L
 RT: 11.94 min Scan# 1780
 Delta R.T. 0.15 min
 Lab File: VX018758.D
 Acq: 02 Oct 2020 19:29

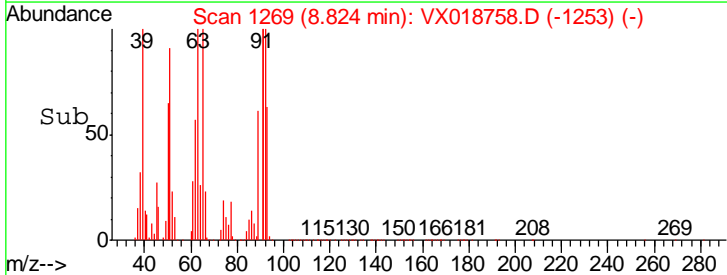
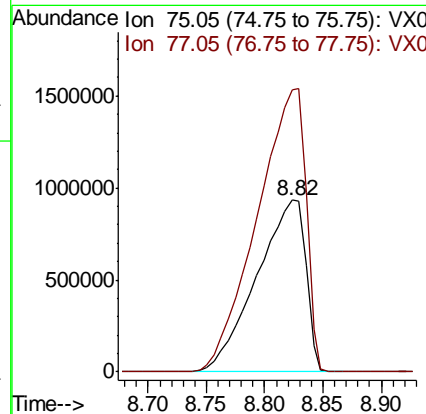
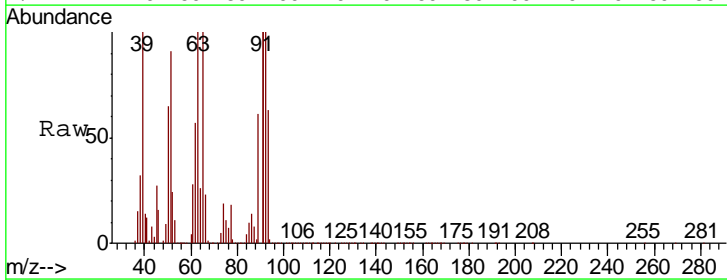
Instrument :
 MSVOA_X
 ClientSampled :
 BG3N5

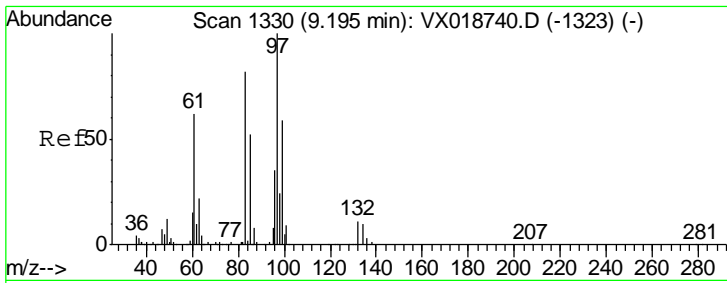
Tgt Ion: 105 Resp: 613042
 Ion Ratio Lower Upper
 105 100
 120 2384.7 35.1 52.7#



#46
 trans-1,3-Dichloropropene
 Concen: 130.172 ug/L
 RT: 8.82 min Scan# 1269
 Delta R.T. -0.20 min
 Lab File: VX018758.D
 Acq: 02 Oct 2020 19:29

Tgt Ion: 75 Resp: 2734563
 Ion Ratio Lower Upper
 75 100
 77 164.1 19.9 37.0#

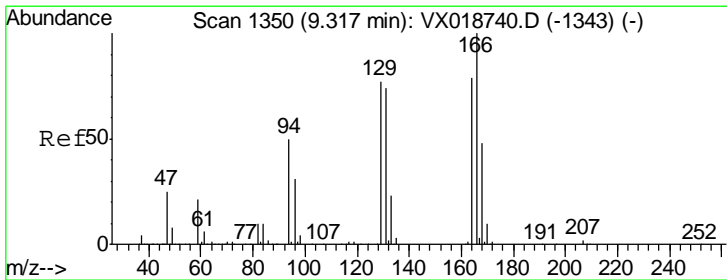
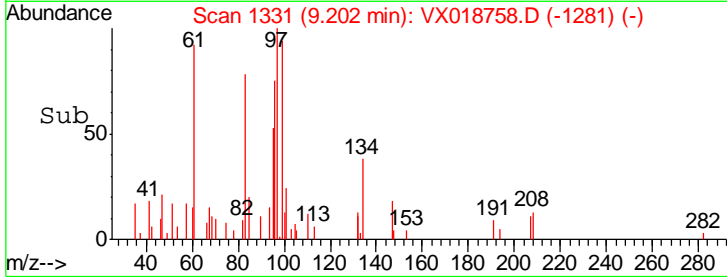
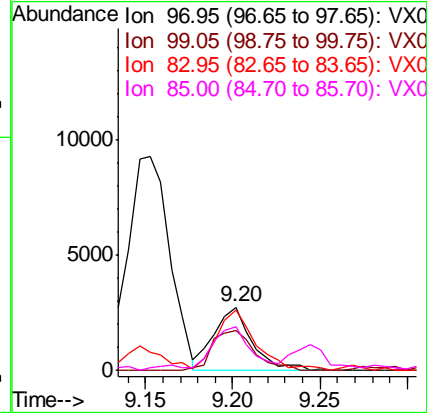
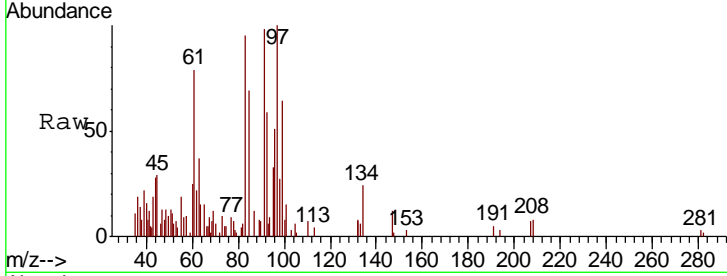




#47
 1,1,2-Trichloroethane
 Concen: 0.388 ug/L
 RT: 9.20 min Scan# 1331
 Delta R.T. 0.01 min
 Lab File: VX018758.D
 Acq: 02 Oct 2020 19:29

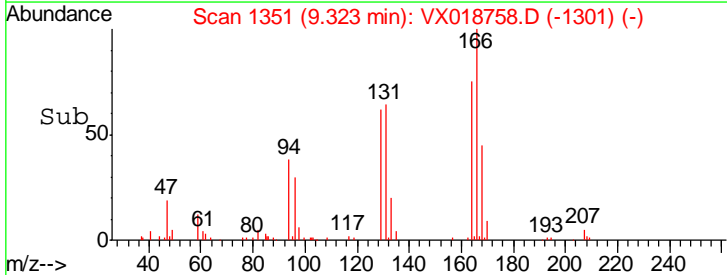
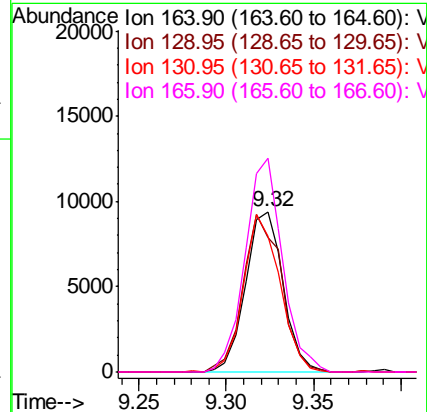
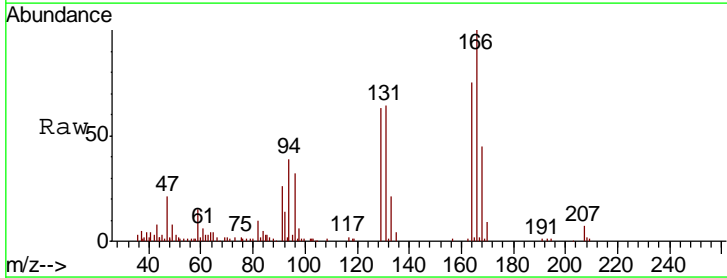
Instrument :
 MSVOA_X
 ClientSampled :
 BG3N5

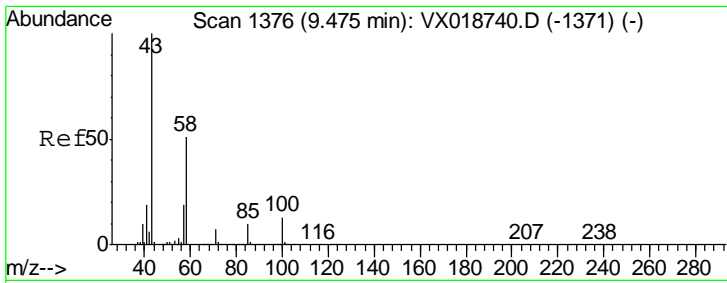
Tgt Ion	Resp	Lower	Upper
97	100		
99	63.6	41.1	76.3
83	94.5	57.5	106.7
85	68.6	36.9	68.5#



#49
 Tetrachloroethene
 Concen: 0.953 ug/L
 RT: 9.32 min Scan# 1351
 Delta R.T. 0.01 min
 Lab File: VX018758.D
 Acq: 02 Oct 2020 19:29

Tgt Ion	Resp	Lower	Upper
164	100		
129	84.1	68.7	127.5
131	84.5	65.3	121.3
166	133.1	88.5	164.4

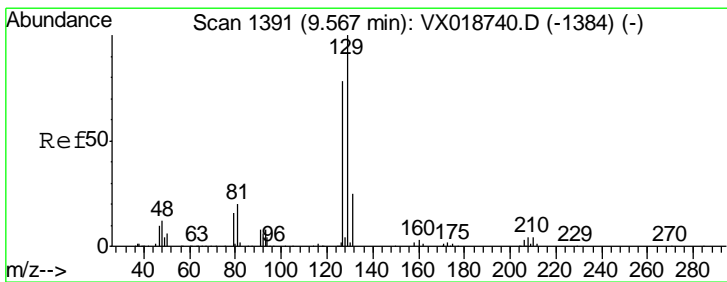
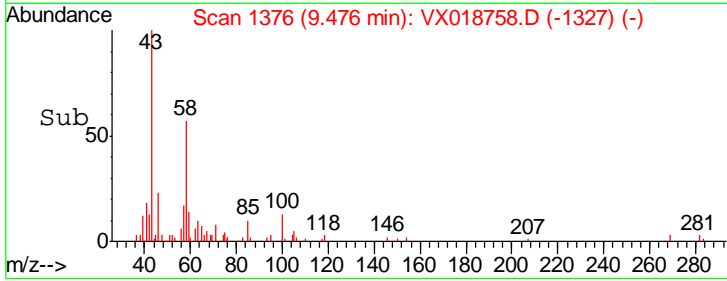
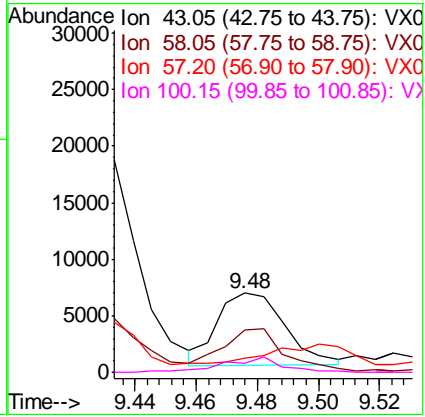
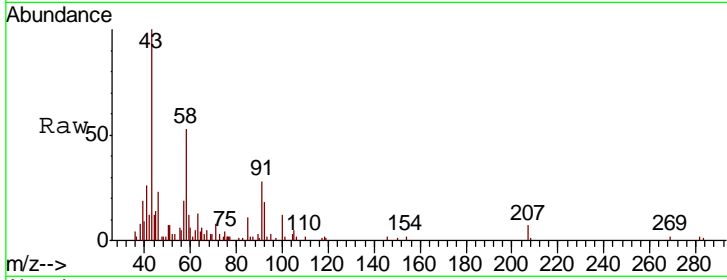




#50
 2-Hexanone
 Concen: 1.632 ug/L
 RT: 9.48 min Scan# 1376
 Delta R.T. 0.00 min
 Lab File: VX018758.D
 Acq: 02 Oct 2020 19:29

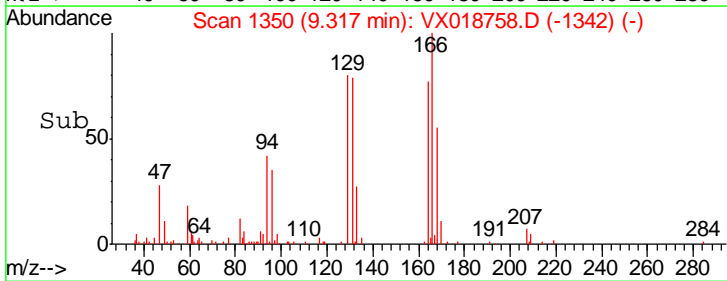
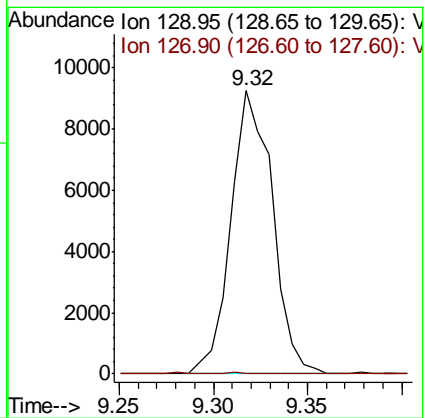
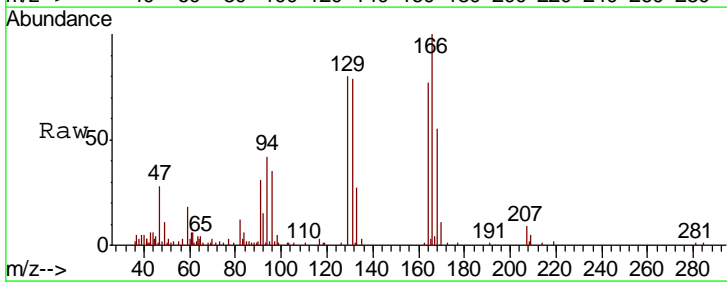
Instrument : MSVOA_X
 ClientSampled : BG3N5

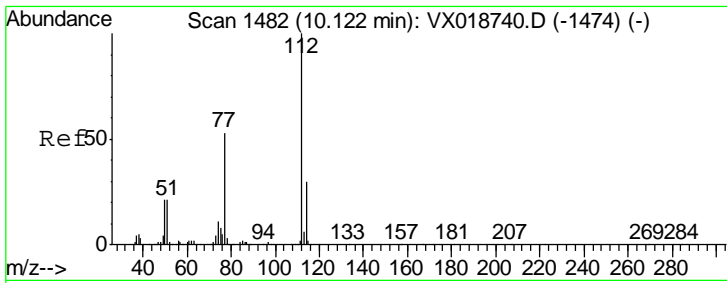
Tgt Ion	Resp	Lower	Upper
43	9787		
58	57.3	41.0	61.4
57	0.0	15.9	23.9#
100	18.4	10.1	15.1#



#51
 Dibromochloromethane
 Concen: 0.901 ug/L
 RT: 9.32 min Scan# 1350
 Delta R.T. -0.25 min
 Lab File: VX018758.D
 Acq: 02 Oct 2020 19:29

Tgt Ion	Resp	Lower	Upper
129	14088		
127	0.0	54.5	101.1#

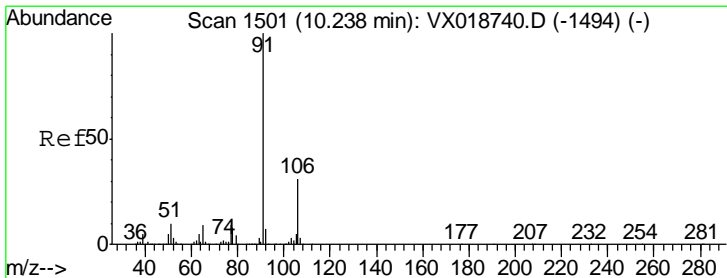
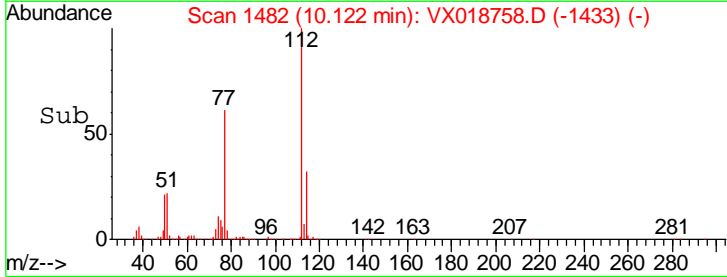
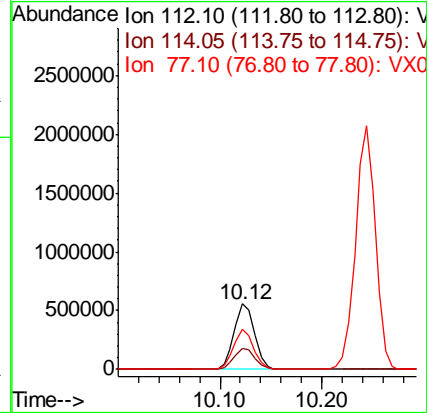
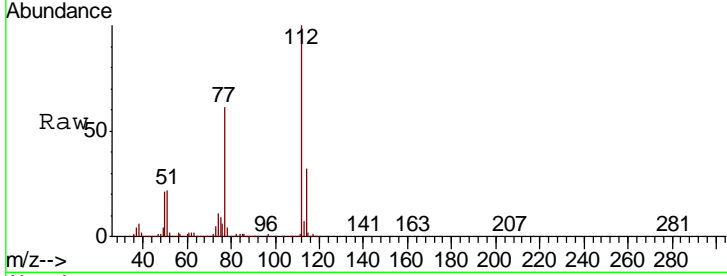




#53
 Chlorobenzene
 Concen: 18.068 ug/L
 RT: 10.12 min Scan# 1482
 Delta R.T. 0.00 min
 Lab File: VX018758.D
 Acq: 02 Oct 2020 19:29

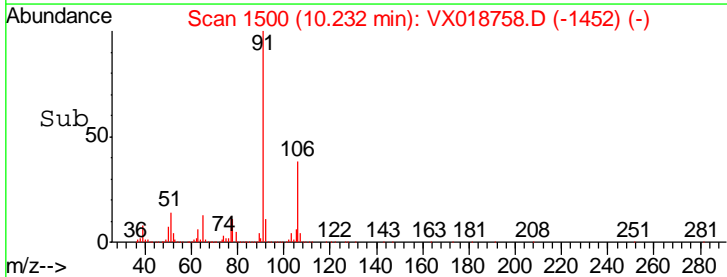
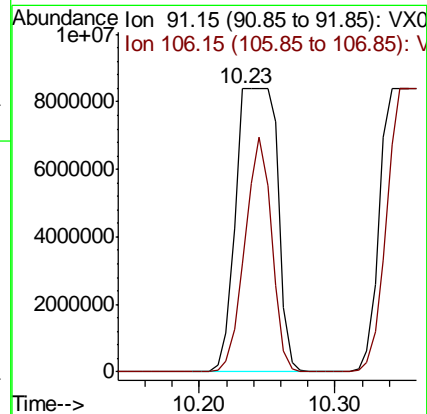
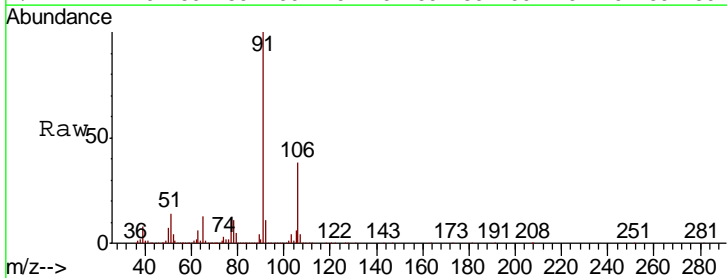
Instrument :
 MSVOA_X
 ClientSampled :
 BG3N5

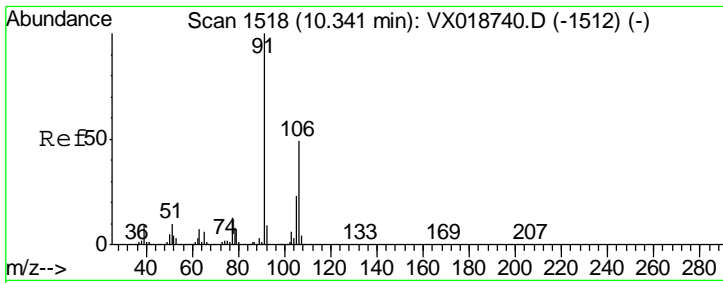
Tgt Ion	Resp	Lower	Upper
112	769508		
114	32.0	21.3	39.5
77	60.5	42.4	63.6



#54
 Ethylbenzene
 Concen: 256.406 ug/L
 RT: 10.23 min Scan# 1500
 Delta R.T. -0.01 min
 Lab File: VX018758.D
 Acq: 02 Oct 2020 19:29

Tgt Ion	Resp	Lower	Upper
91	17896135		
106	38.0	21.5	39.9

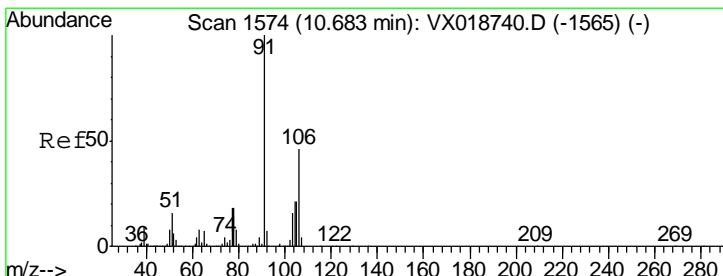
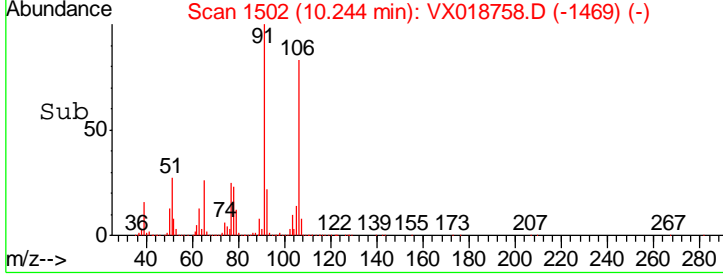
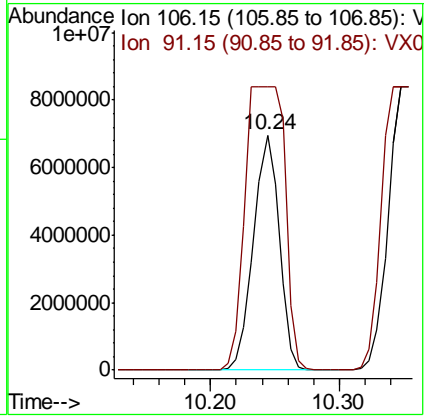
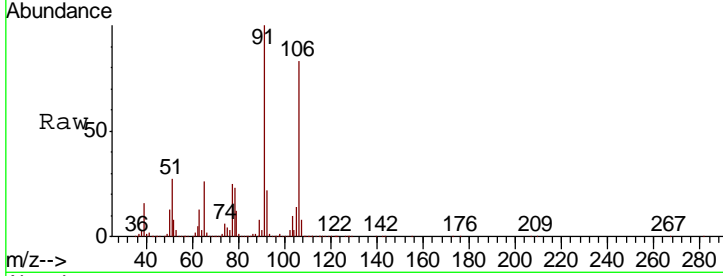




#55
 m,p-xylene
 Concen: 352.716 ug/L
 RT: 10.24 min Scan# 1502
 Delta R.T. -0.10 min
 Lab File: VX018758.D
 Acq: 02 Oct 2020 19:29

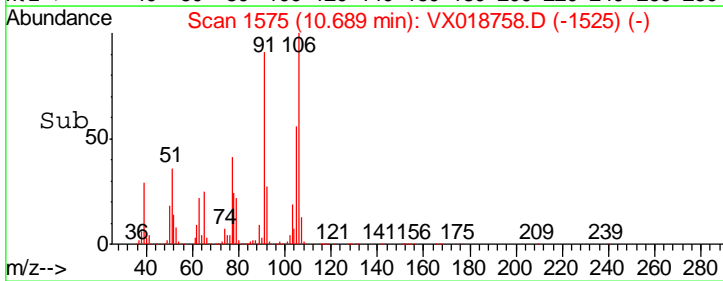
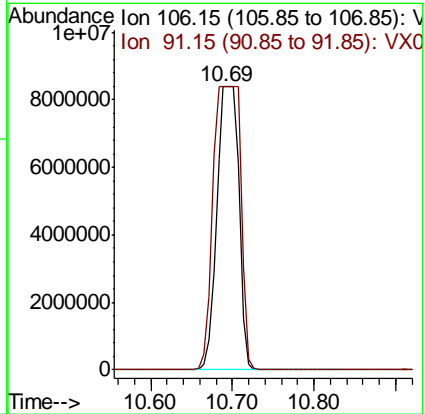
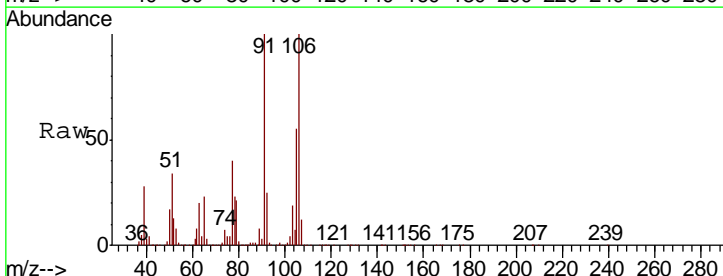
Instrument : MSVOA_X
 Client Sampled : BG3N5

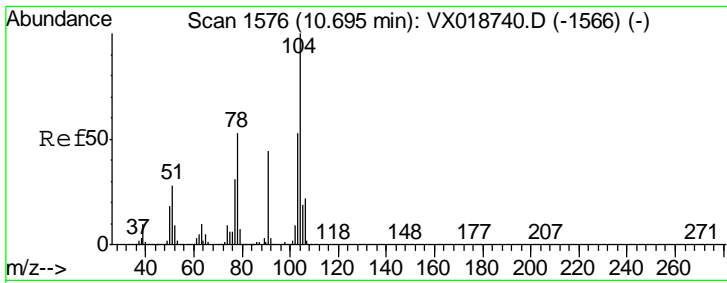
Tgt Ion	Resp	Lower	Upper
106	100		
91	120.4	143.4	266.2#



#56
 o-xylene
 Concen: 629.064 ug/L
 RT: 10.69 min Scan# 1575
 Delta R.T. 0.01 min
 Lab File: VX018758.D
 Acq: 02 Oct 2020 19:29

Tgt Ion	Resp	Lower	Upper
106	100		
91	100.0	153.4	284.8#

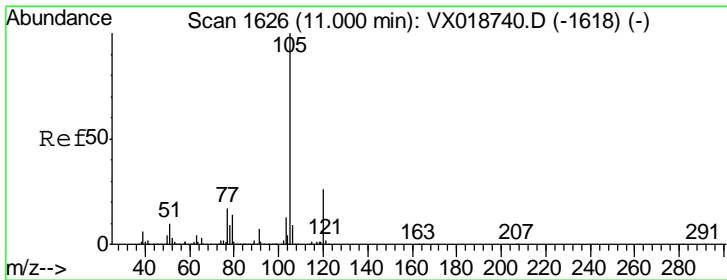
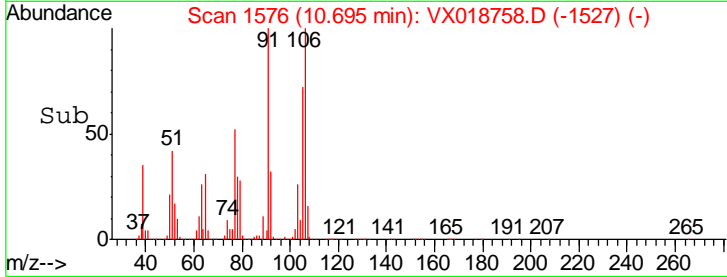
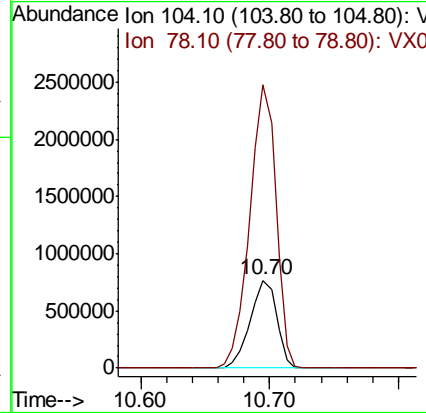
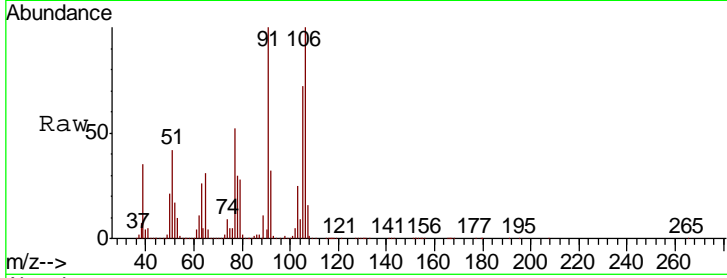




#57
 Styrene
 Concen: 25.306 ug/L
 RT: 10.70 min Scan# 1576
 Delta R.T. 0.00 min
 Lab File: VX018758.D
 Acq: 02 Oct 2020 19:29

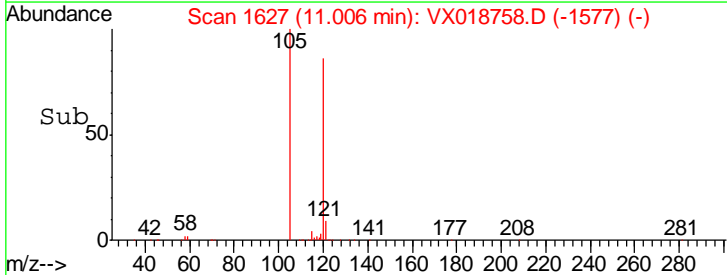
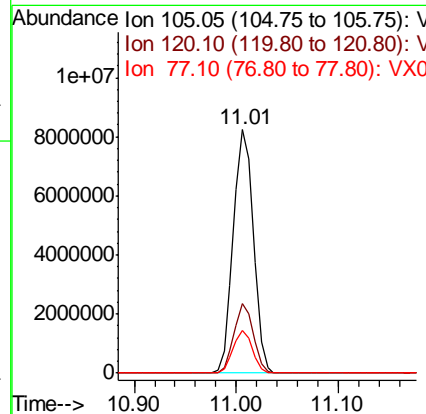
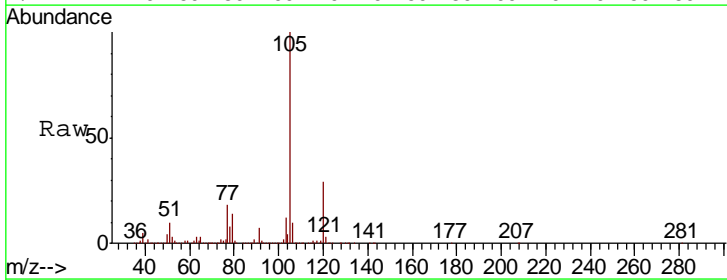
Instrument :
 MSVOA_X
 ClientSampled :
 BG3N5

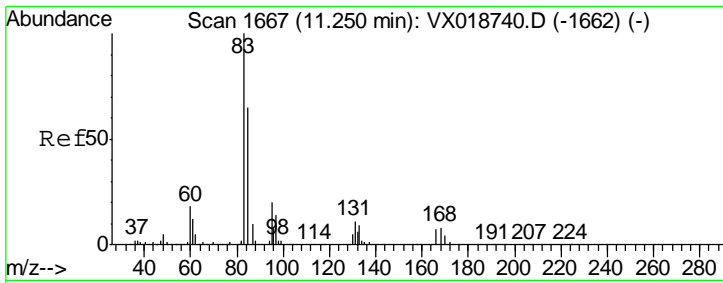
Tgt Ion	Resp	Lower	Upper
104	1086112		
78	321.4	37.1	68.9#



#58
 Isopropylbenzene
 Concen: 159.052 ug/L
 RT: 11.01 min Scan# 1627
 Delta R.T. 0.01 min
 Lab File: VX018758.D
 Acq: 02 Oct 2020 19:29

Tgt Ion	Resp	Lower	Upper
105	11202883		
120	27.4	20.2	30.2
77	16.8	13.3	19.9

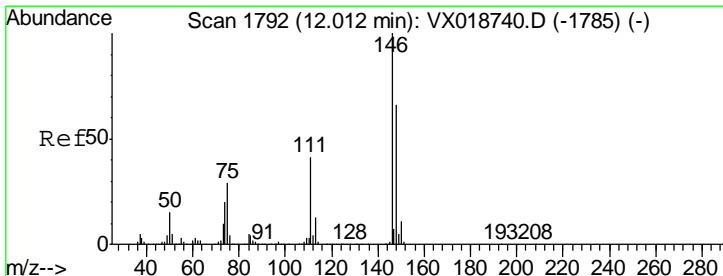
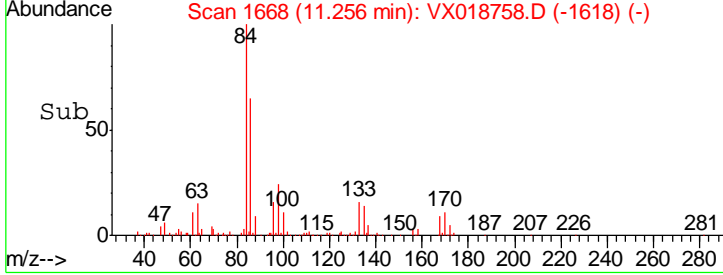
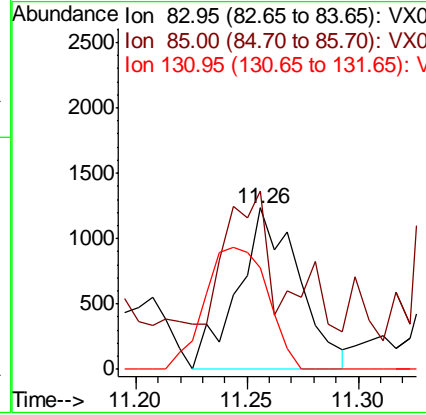
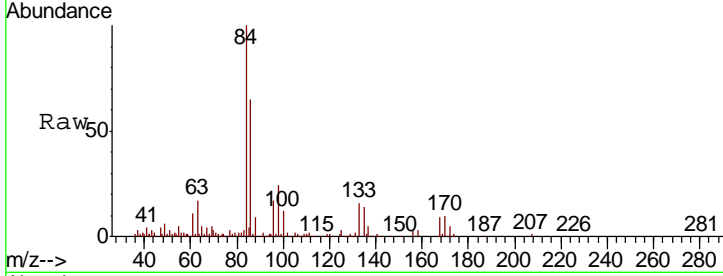




#60
 1,1,2,2-Tetrachloroethane
 Concen: 0.196 ug/L
 RT: 11.26 min Scan# 1668
 Delta R.T. 0.01 min
 Lab File: VX018758.D
 Acq: 02 Oct 2020 19:29

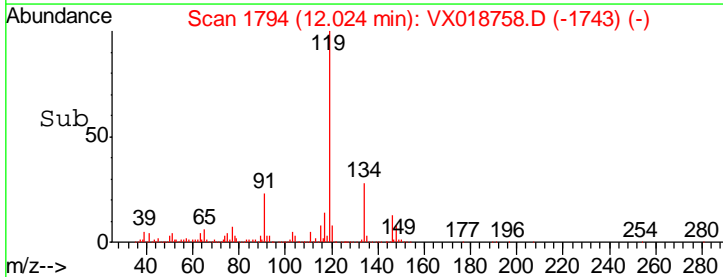
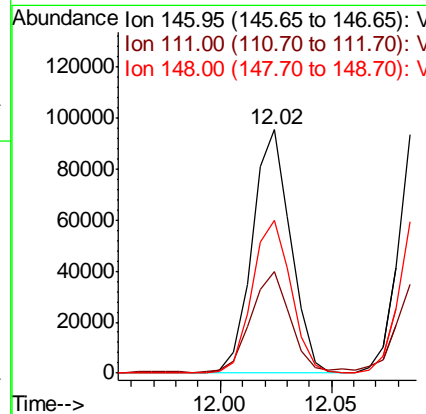
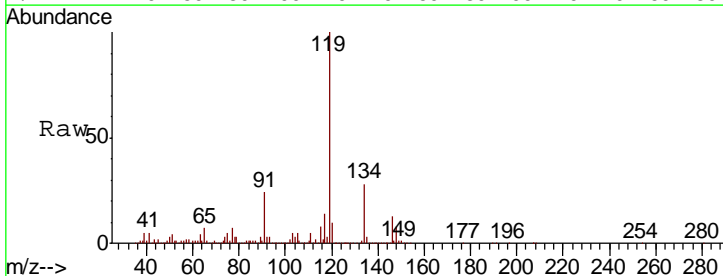
Instrument :
 MSVOA_X
 ClientSampled :
 BG3N5

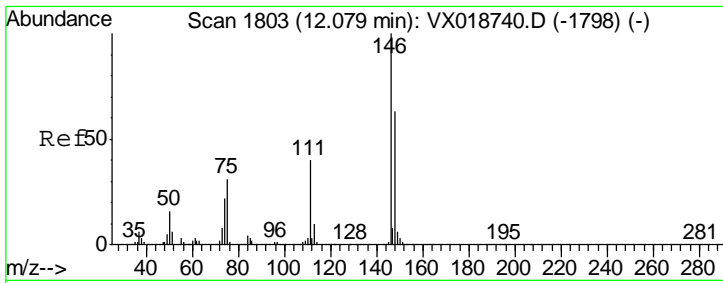
Tgt Ion	Resp	Lower	Upper
83	100		
85	110.5	46.5	86.5#
131	62.7	9.6	14.4#



#63
 1,3-Dichlorobenzene
 Concen: 3.611 ug/L
 RT: 12.02 min Scan# 1794
 Delta R.T. 0.01 min
 Lab File: VX018758.D
 Acq: 02 Oct 2020 19:29

Tgt Ion	Resp	Lower	Upper
146	100		
111	41.9	28.4	52.8
148	62.9	45.9	85.3

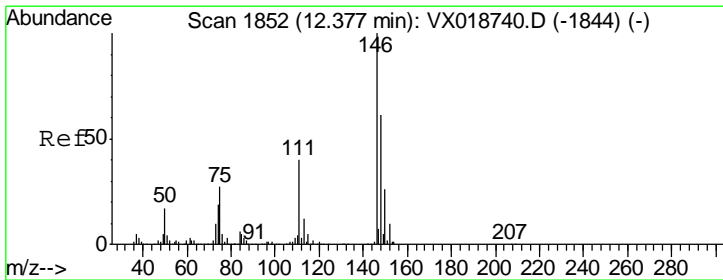
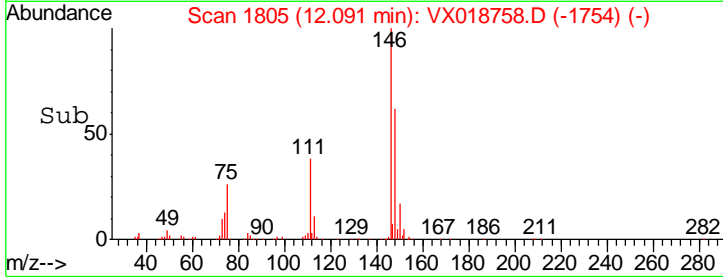
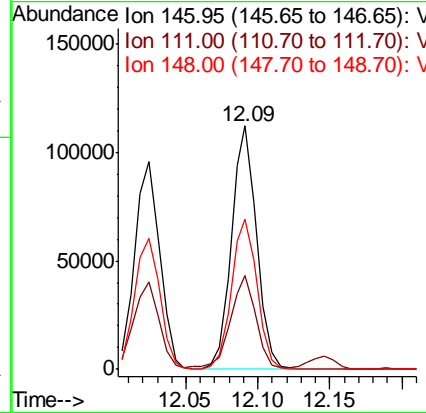
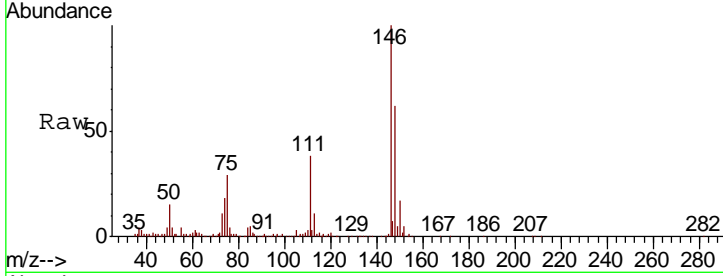




#64
 1,4-Dichlorobenzene
 Concen: 4.366 ug/L
 RT: 12.09 min Scan# 1805
 Delta R.T. 0.01 min
 Lab File: VX018758.D
 Acq: 02 Oct 2020 19:29

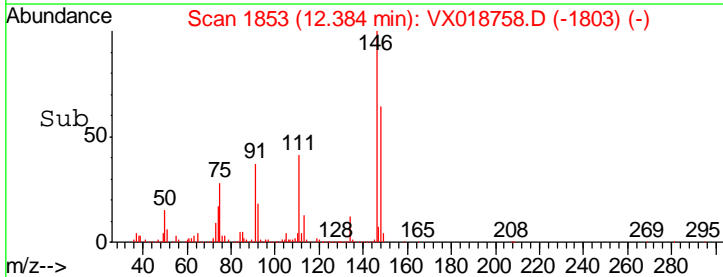
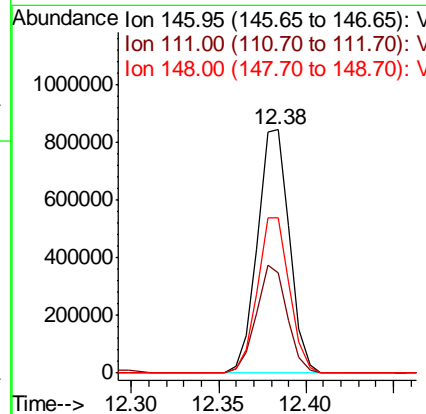
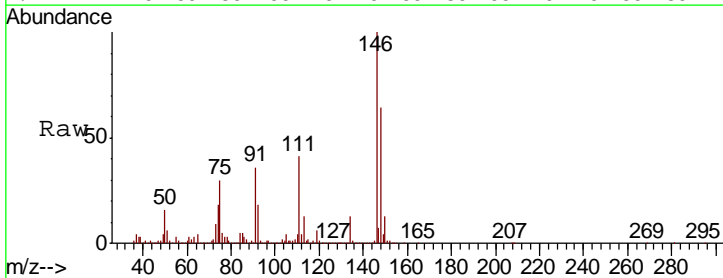
Instrument :
 MSVOA_X
 ClientSampled :
 BG3N5

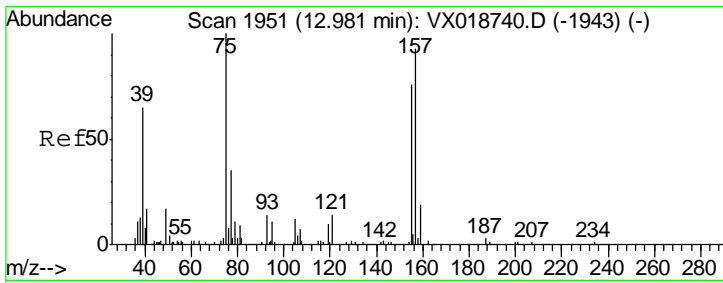
Tgt Ion	Resp	Lower	Upper
146	137707		
111	38.4	28.6	53.2
148	61.9	44.2	82.0



#66
 1,2-Dichlorobenzene
 Concen: 36.755 ug/L
 RT: 12.38 min Scan# 1853
 Delta R.T. 0.01 min
 Lab File: VX018758.D
 Acq: 02 Oct 2020 19:29

Tgt Ion	Resp	Lower	Upper
146	1085445		
111	41.0	31.7	47.5
148	63.6	49.0	73.6

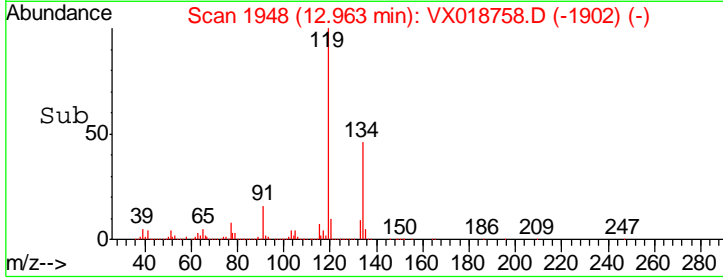
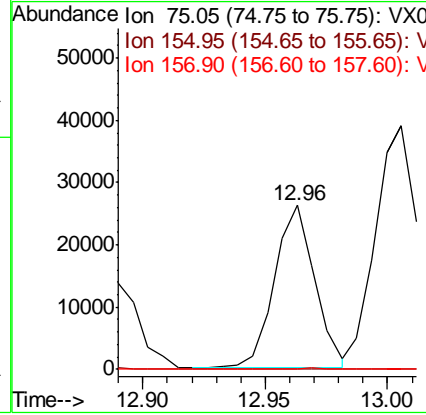
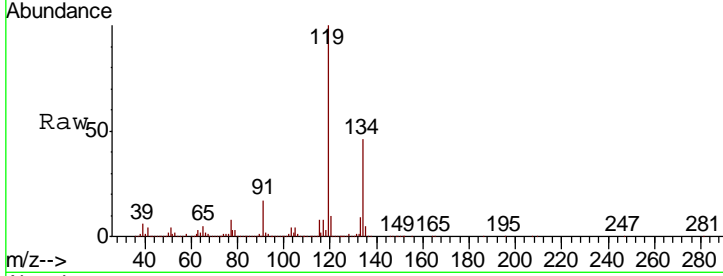




#67
 1,2-Dibromo-3-chloropropane
 Concen: 11.913 ug/L
 RT: 12.96 min Scan# 1948
 Delta R.T. -0.02 min
 Lab File: VX018758.D
 Acq: 02 Oct 2020 19:29

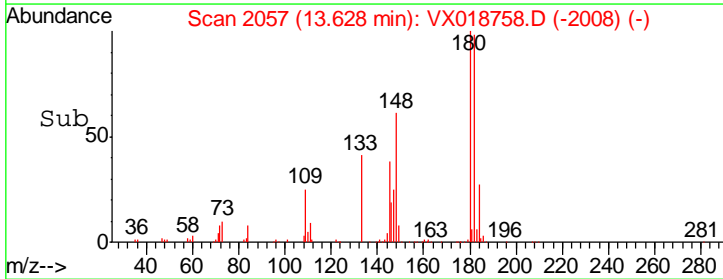
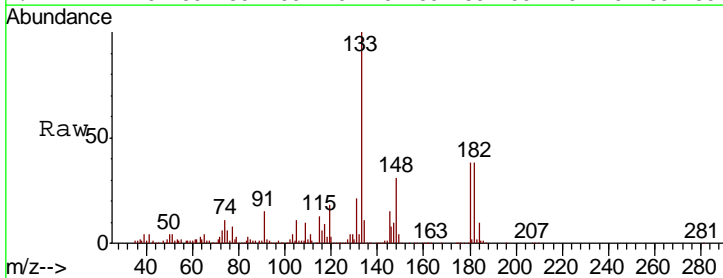
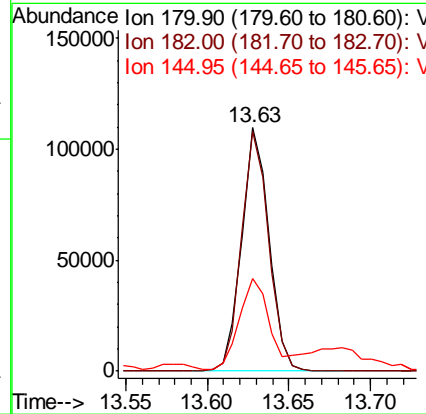
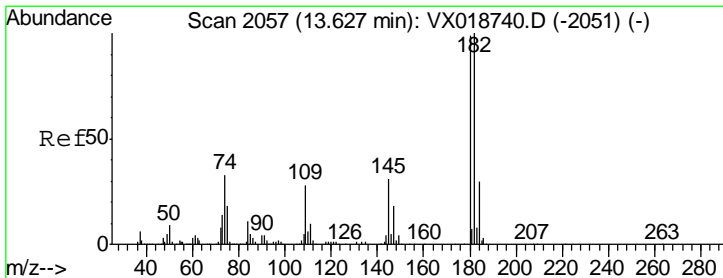
Instrument :
 MSVOA_X
 ClientSampled :
 BG3N5

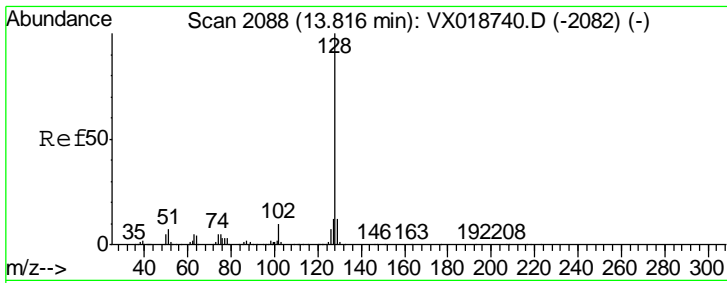
Tgt Ion	Resp	Lower	Upper
75	29983		
155	0.5	61.1	91.7#
157	0.0	74.2	111.2#



#69
 1,2,4-trichlorobenzene
 Concen: 6.363 ug/L
 RT: 13.63 min Scan# 2057
 Delta R.T. 0.00 min
 Lab File: VX018758.D
 Acq: 02 Oct 2020 19:29

Tgt Ion	Resp	Lower	Upper
180	128613		
182	97.8	80.2	120.4
145	42.0	25.2	37.8#



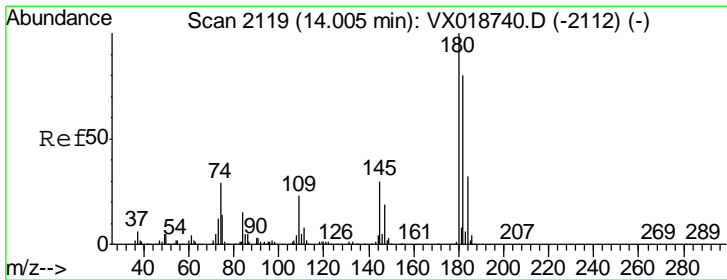
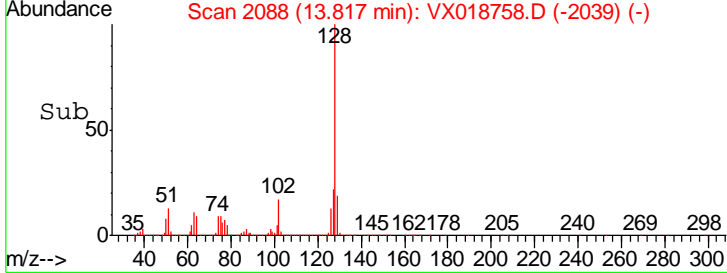
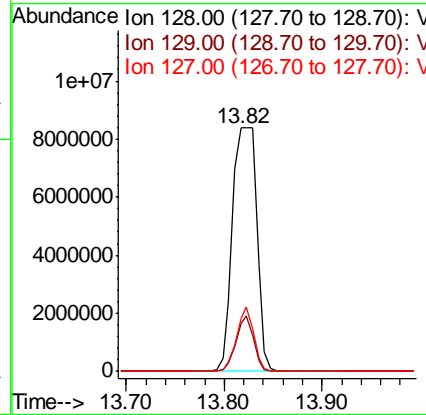
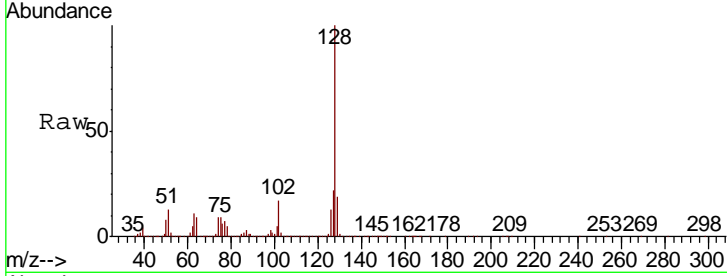


#70
 Naphthalene
 Concen: 438.228 ug/L
 RT: 13.82 min Scan# 2088
 Delta R.T. 0.00 min
 Lab File: VX018758.D
 Acq: 02 Oct 2020 19:29

Instrument :
 MSVOA_X
 ClientSampled :
 BG3N5

Tgt Ion:128 Resp:14477237

Ion	Ratio	Lower	Upper
128	100		
129	16.3	9.0	13.4#
127	18.7	10.5	15.7#



#71
 1,2,3-Trichlorobenzene
 Concen: 3.303 ug/L
 RT: 14.00 min Scan# 2118
 Delta R.T. -0.01 min
 Lab File: VX018758.D
 Acq: 02 Oct 2020 19:29

Tgt Ion:180 Resp: 60074

Ion	Ratio	Lower	Upper
180	100		
182	90.6	73.6	110.4
145	37.2	26.6	40.0

