

Data Path : Z:\voasrv\HPCHEM1\MSVOA_X\Data\VX100224\
 Data File : VX043237.D
 Acq On : 02 Oct 2024 17:27
 Operator : JC/MD
 Sample : P4236-08
 Misc : 5.0mL/MSVOA_X/WATER
 ALS Vial : 23 Sample Multiplier: 1

Instrument :
 MSVOA_X
 ClientSampleId :

Quant Time: Oct 03 02:36:27 2024
 Quant Method : Z:\voasrv\HPCHEM1\MSVOA_X\Method\82X100124W.M
 Quant Title : SW846 8260
 QLast Update : Wed Oct 02 16:50:57 2024
 Response via : Initial Calibration

Compound	R.T.	QIon	Response	Conc	Units	Dev(Min)

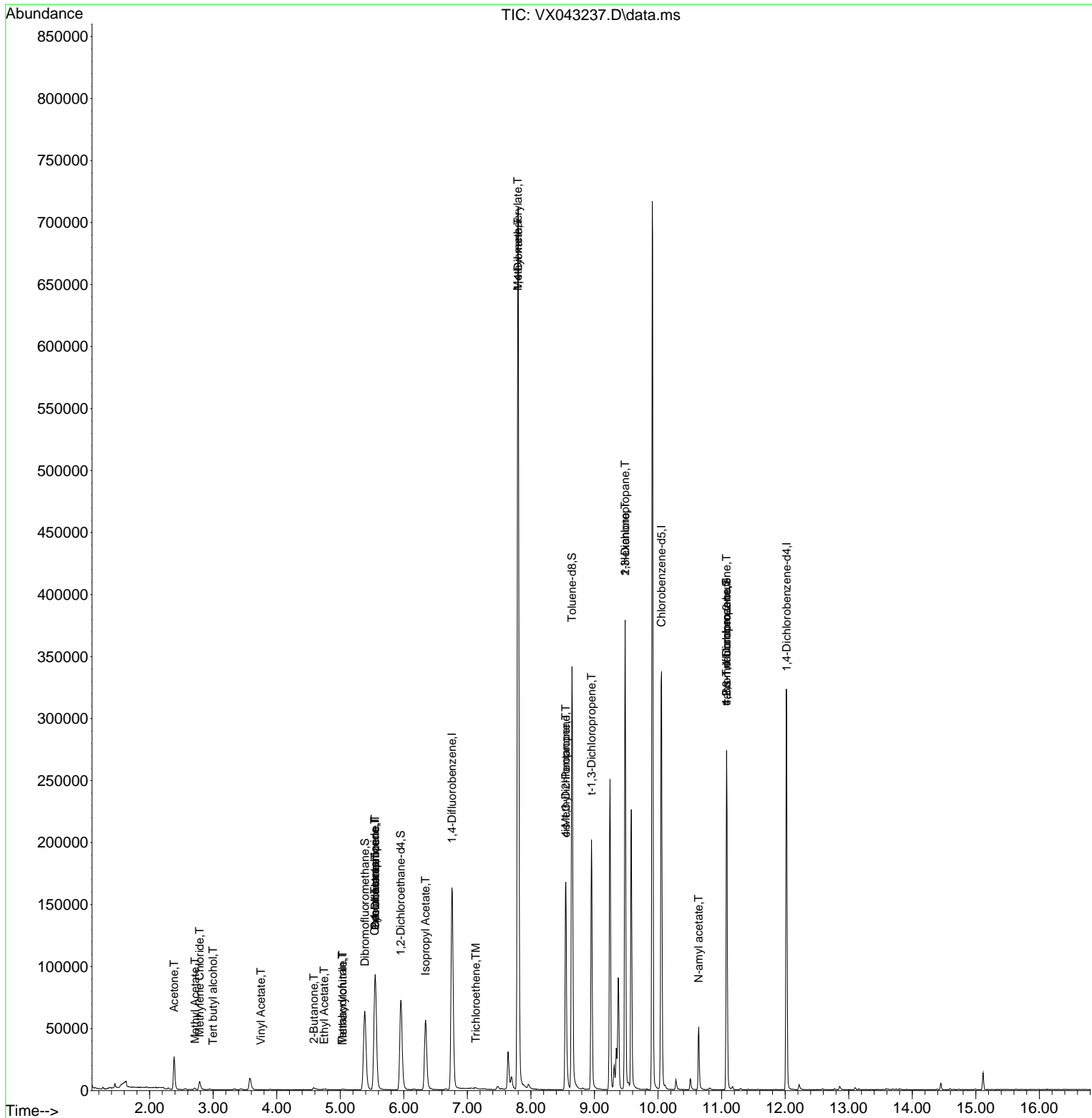
Internal Standards						
1) Pentafluorobenzene	5.550	168	85853	50.000	ug/l	0.00
34) 1,4-Difluorobenzene	6.757	114	164952	50.000	ug/l	0.00
63) Chlorobenzene-d5	10.055	117	147477	50.000	ug/l	0.00
72) 1,4-Dichlorobenzene-d4	12.024	152	64669	50.000	ug/l	0.00
System Monitoring Compounds						
33) 1,2-Dichloroethane-d4	5.952	65	74890	53.412	ug/l	0.00
Spiked Amount	50.000	Range 74 - 125	Recovery	=	106.820%	
35) Dibromofluoromethane	5.385	113	54951	48.305	ug/l	0.00
Spiked Amount	50.000	Range 75 - 124	Recovery	=	96.620%	
50) Toluene-d8	8.647	98	200574	50.878	ug/l	0.00
Spiked Amount	50.000	Range 86 - 113	Recovery	=	101.760%	
62) 4-Bromofluorobenzene	11.079	95	73084	51.030	ug/l	0.00
Spiked Amount	50.000	Range 77 - 121	Recovery	=	102.060%	
Target Compounds						
						Qvalue
11) Tert butyl alcohol	2.995	59	325	1.218	ug/l #	71
16) Acetone	2.386	43	29353	50.130	ug/l	99
18) Methyl Acetate	2.715	43	2034	1.385	ug/l #	69
20) Methylene Chloride	2.788	84	3439	3.185	ug/l	93
23) Vinyl Acetate	3.751	43	123	6.374	ug/l #	71
25) 2-Butanone	4.587	43	4224	5.261	ug/l #	90
29) Tetrahydrofuran	5.032	42	263	0.514	ug/l #	37
31) Cyclohexane	5.550	56	2090	1.381	ug/l #	18
36) 1,1-Dichloropropene	5.550	75	7501	5.219	ug/l #	49
37) Ethyl Acetate	4.745	43	2353	1.363	ug/l #	78
38) Carbon Tetrachloride	5.544	117	9637	5.665	ug/l #	15
41) Methacrylonitrile	5.038	41	234	0.260	ug/l #	47
43) Isopropyl Acetate	6.342	43	80283	28.164	ug/l	99
44) Trichloroethene	7.135	130	260	0.225	ug/l	81
48) Methyl methacrylate	7.793	41	67327	48.137	ug/l #	45
49) 1,4-Dioxane	7.799	88	59	2.170	ug/l #	1
51) 4-Methyl-2-Pentanone	8.549	43	64914	37.495	ug/l #	51
53) t-1,3-Dichloropropene	8.952	75	425	0.254	ug/l #	43
54) cis-1,3-Dichloropropene	8.549	75	27225	15.164	ug/l #	59
57) 1,3-Dichloropropane	9.482	76	3100	1.677	ug/l #	43
59) 2-Hexanone	9.482	43	45864	35.031	ug/l #	52
74) N-amyl acetate	10.640	43	12894	5.402	ug/l #	53
76) 1,2,3-Trichloropropane	11.079	75	40186	28.015	ug/l #	33
81) trans-1,4-Dichloro-2-b...	11.079	75	40186	72.606	ug/l #	8

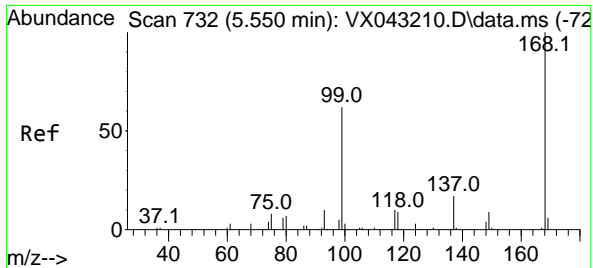
(#) = qualifier out of range (m) = manual integration (+) = signals summed

Data Path : Z:\voasrv\HPCHEM1\MSVOA_X\Data\VX100224\
 Data File : VX043237.D
 Acq On : 02 Oct 2024 17:27
 Operator : JC/MD
 Sample : P4236-08
 Misc : 5.0mL/MSVOA_X/WATER
 ALS Vial : 23 Sample Multiplier: 1

Instrument :
 MSVOA_X
 ClientSampleId :

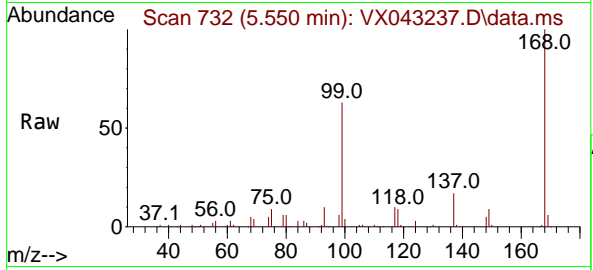
Quant Time: Oct 03 02:36:27 2024
 Quant Method : Z:\voasrv\HPCHEM1\MSVOA_X\Method\82X100124W.M
 Quant Title : SW846 8260
 QLast Update : Wed Oct 02 16:50:57 2024
 Response via : Initial Calibration



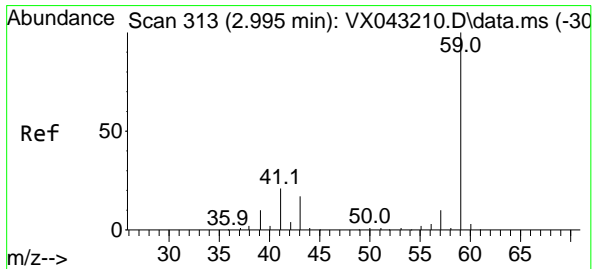
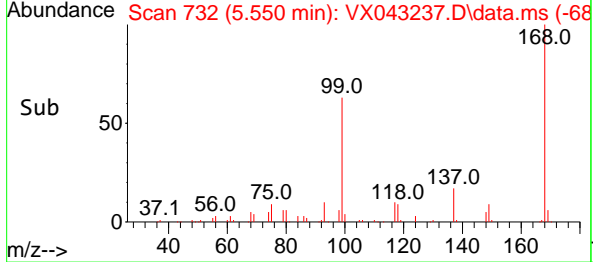
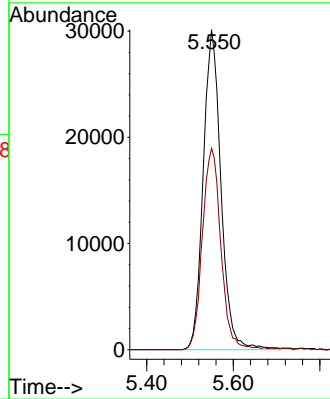


#1
 Pentafluorobenzene
 Concen: 50.000 ug/l
 RT: 5.550 min Scan# 71
 Delta R.T. -0.000 min
 Lab File: VX043237.D
 Acq: 02 Oct 2024 17:27

Instrument :
 MSVOA_X
 ClientSampleId :

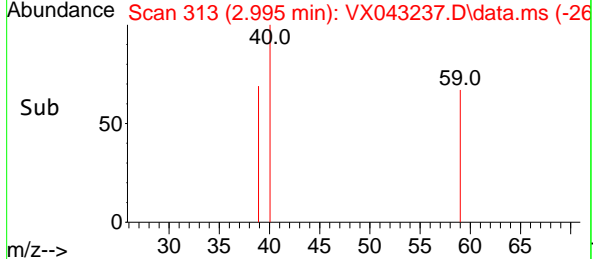
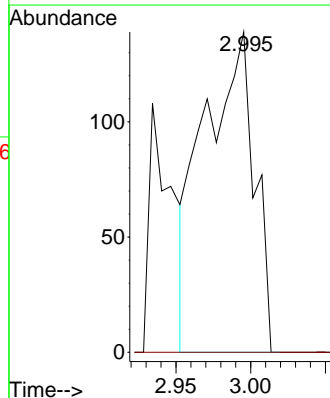
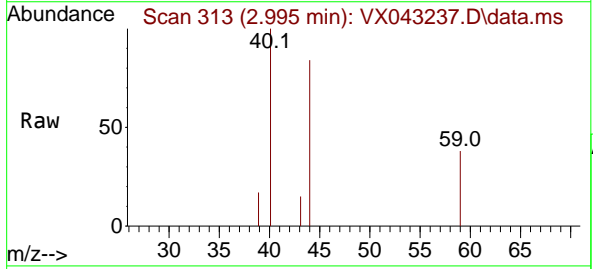


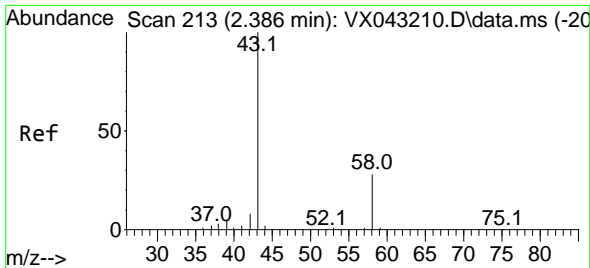
Tgt Ion:168 Resp: 85853
 Ion Ratio Lower Upper
 168 100
 99 63.0 49.7 74.5



#11
 Tert butyl alcohol
 Concen: 1.218 ug/l
 RT: 2.995 min Scan# 313
 Delta R.T. -0.000 min
 Lab File: VX043237.D
 Acq: 02 Oct 2024 17:27

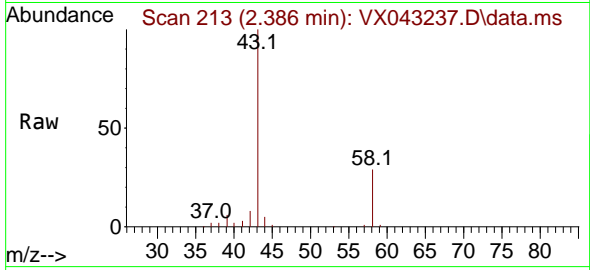
Tgt Ion: 59 Resp: 325
 Ion Ratio Lower Upper
 59 100
 57 0.0 8.6 13.0#



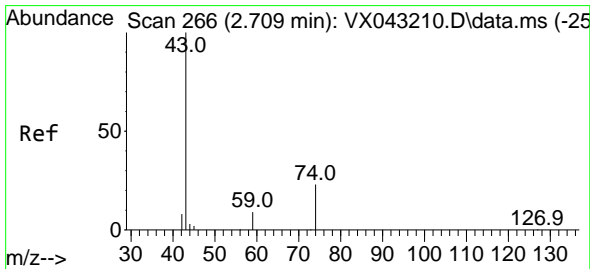
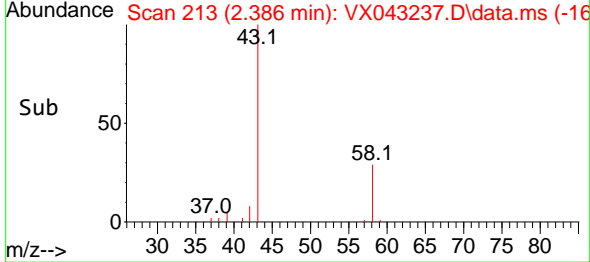
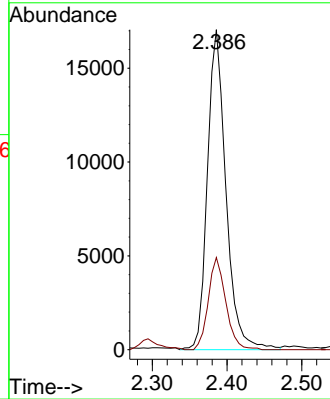


#16
 Acetone
 Concen: 50.130 ug/l
 RT: 2.386 min Scan# 21
 Delta R.T. -0.000 min
 Lab File: VX043237.D
 Acq: 02 Oct 2024 17:27

Instrument :
 MSVOA_X
 ClientSampleId :

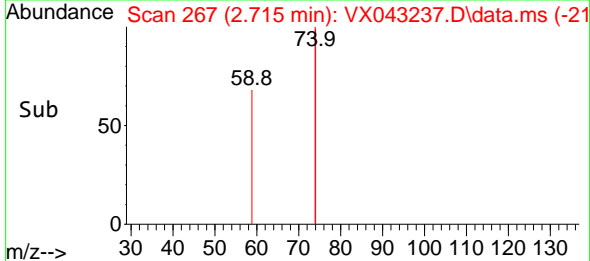
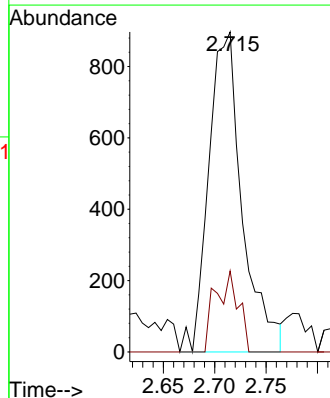
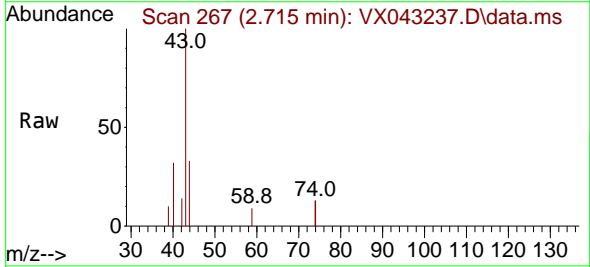


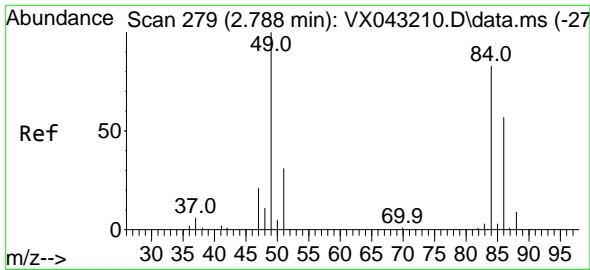
Tgt Ion: 43 Resp: 29353
 Ion Ratio Lower Upper
 43 100
 58 28.8 22.6 33.8



#18
 Methyl Acetate
 Concen: 1.385 ug/l
 RT: 2.715 min Scan# 267
 Delta R.T. 0.006 min
 Lab File: VX043237.D
 Acq: 02 Oct 2024 17:27

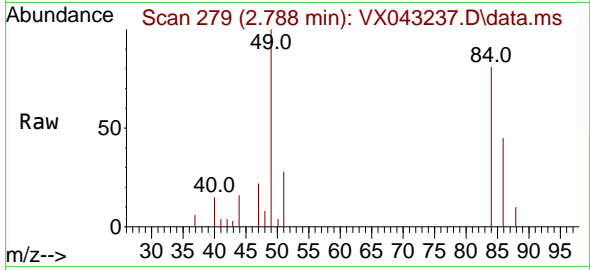
Tgt Ion: 43 Resp: 2034
 Ion Ratio Lower Upper
 43 100
 74 8.6 19.1 28.7#





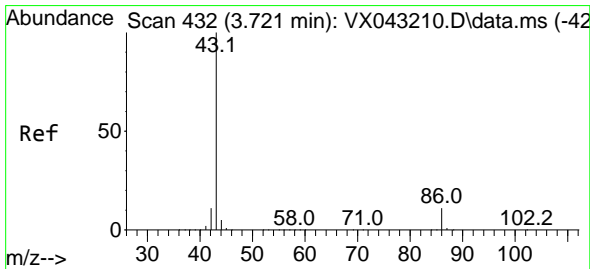
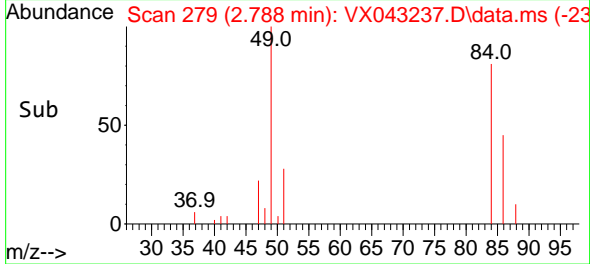
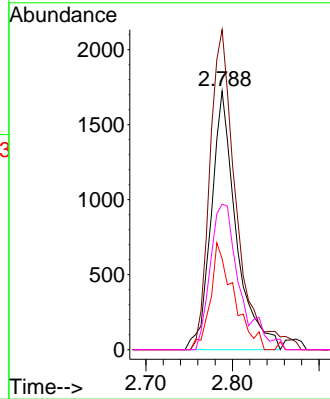
#20
 Methylene Chloride
 Concen: 3.185 ug/l
 RT: 2.788 min Scan# 21
 Delta R.T. -0.000 min
 Lab File: VX043237.D
 Acq: 02 Oct 2024 17:27

Instrument :
 MSVOA_X
 ClientSampleId :



Tgt Ion: 84 Resp: 3439

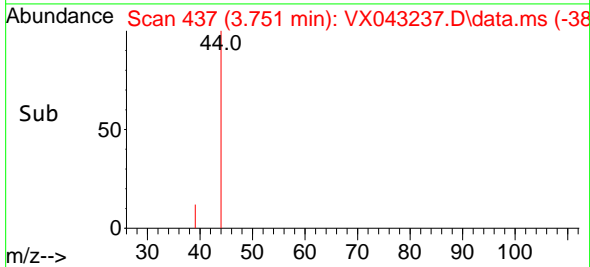
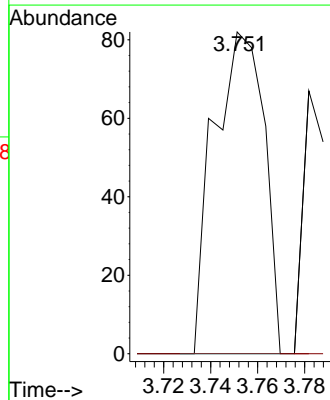
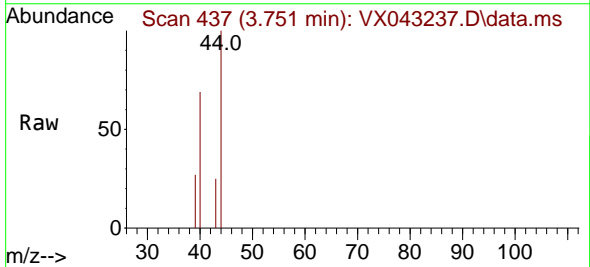
Ion	Ratio	Lower	Upper
84	100		
49	123.8	96.7	145.1
51	35.1	30.4	45.6
86	56.3	54.7	

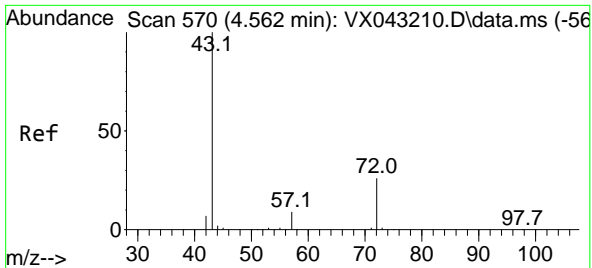


#23
 Vinyl Acetate
 Concen: 6.374 ug/l
 RT: 3.751 min Scan# 437
 Delta R.T. 0.030 min
 Lab File: VX043237.D
 Acq: 02 Oct 2024 17:27

Tgt Ion: 43 Resp: 123

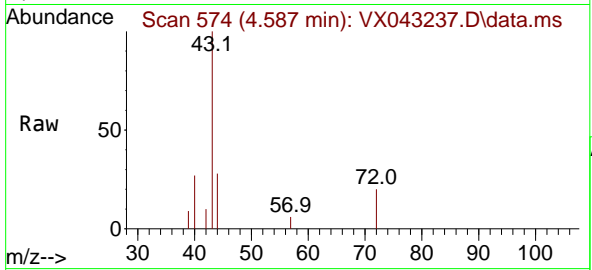
Ion	Ratio	Lower	Upper
43	100		
86	0.0	8.8	13.2#



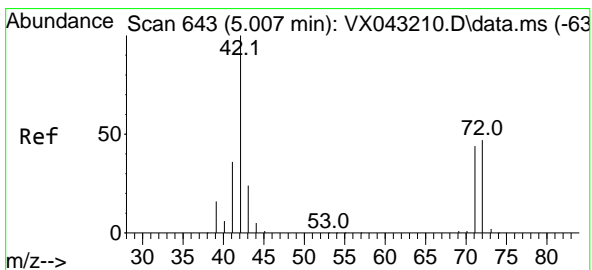
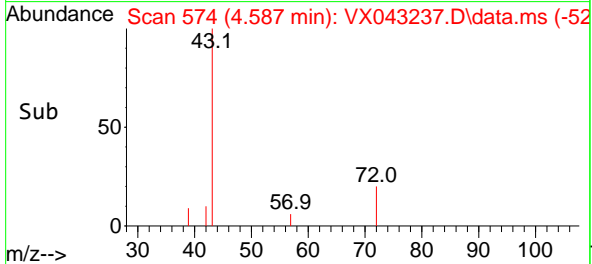
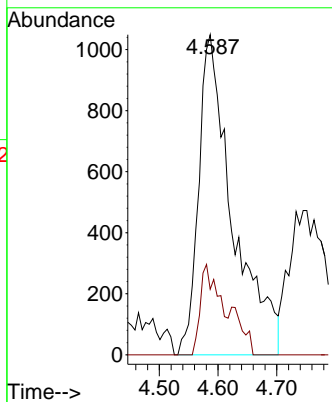


#25
 2-Butanone
 Concen: 5.261 ug/l
 RT: 4.587 min Scan# 51
 Delta R.T. 0.024 min
 Lab File: VX043237.D
 Acq: 02 Oct 2024 17:27

Instrument :
 MSVOA_X
 ClientSampleId :

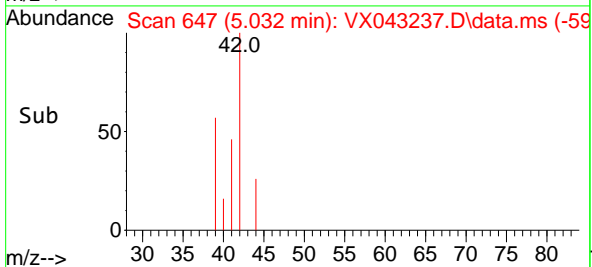
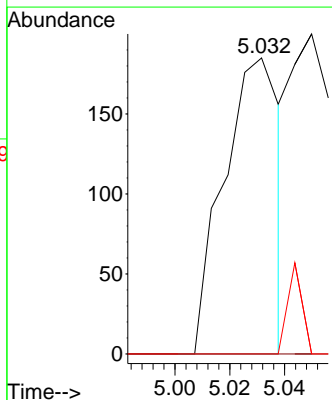
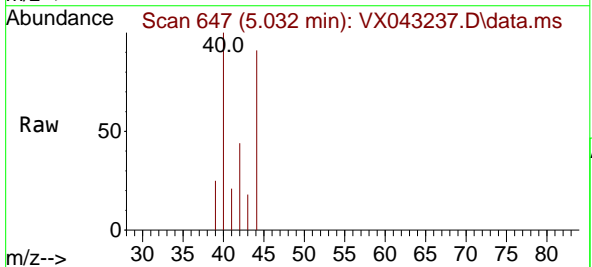


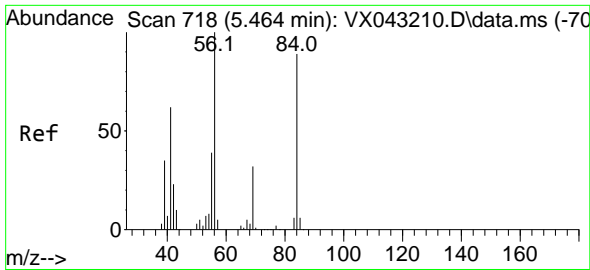
Tgt Ion: 43 Resp: 4224
 Ion Ratio Lower Upper
 43 100
 72 20.5 20.6 31.0#



#29
 Tetrahydrofuran
 Concen: 0.514 ug/l
 RT: 5.032 min Scan# 647
 Delta R.T. 0.024 min
 Lab File: VX043237.D
 Acq: 02 Oct 2024 17:27

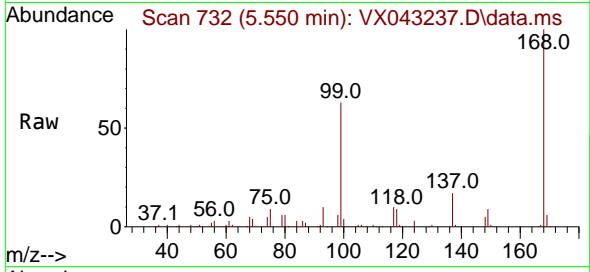
Tgt Ion: 42 Resp: 263
 Ion Ratio Lower Upper
 42 100
 72 0.0 37.7 56.5#
 71 8.0 34.6 52.0#



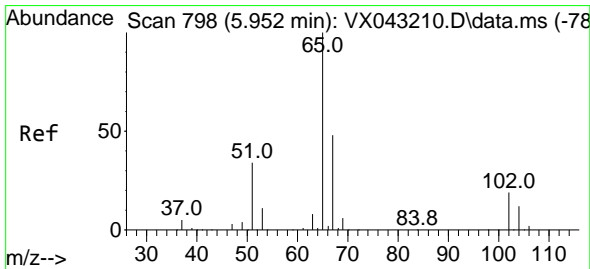
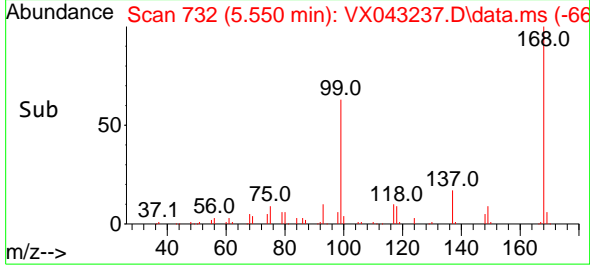
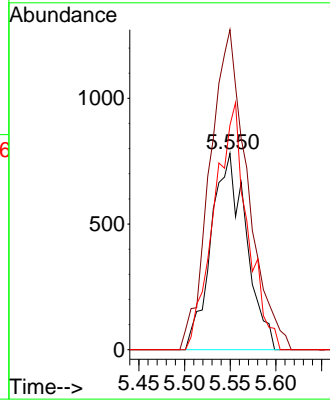


#31
 Cyclohexane
 Concen: 1.381 ug/l
 RT: 5.550 min Scan# 718
 Delta R.T. 0.085 min
 Lab File: VX043237.D
 Acq: 02 Oct 2024 17:27

Instrument : MSVOA_X
 ClientSampleId :

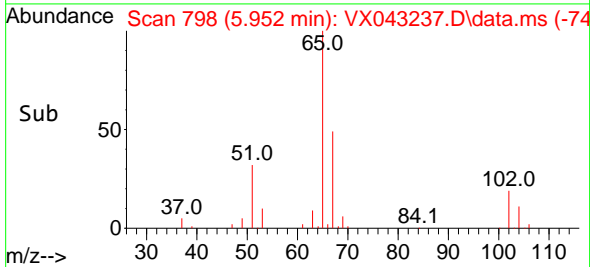
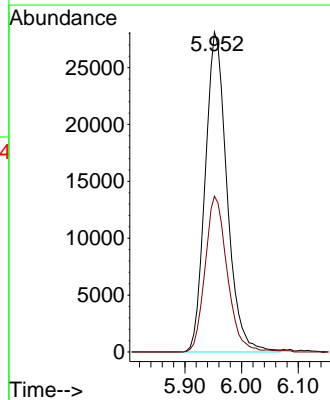
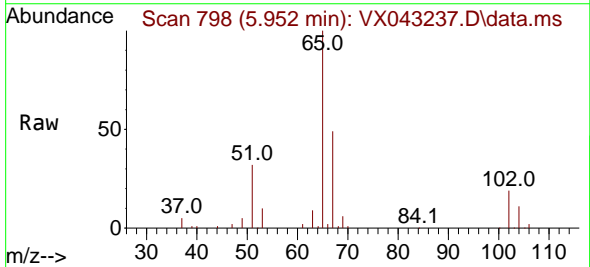


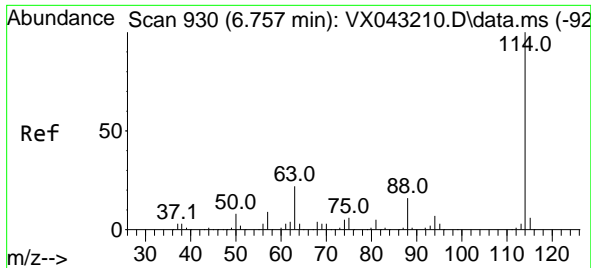
Tgt Ion: 56 Resp: 2090
 Ion Ratio Lower Upper
 56 100
 69 163.0 25.8 38.6#
 84 114.3 71.1 106.7#



#33
 1,2-Dichloroethane-d4
 Concen: 53.412 ug/l
 RT: 5.952 min Scan# 798
 Delta R.T. -0.000 min
 Lab File: VX043237.D
 Acq: 02 Oct 2024 17:27

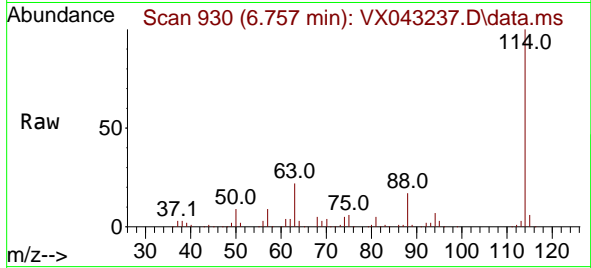
Tgt Ion: 65 Resp: 74890
 Ion Ratio Lower Upper
 65 100
 67 49.5 0.0 99.0



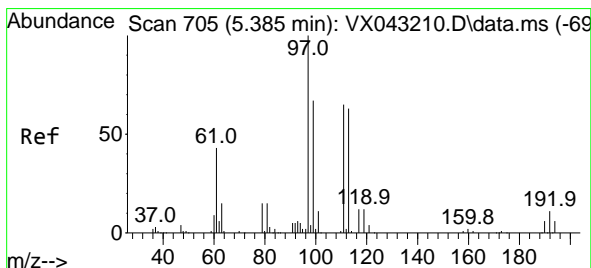
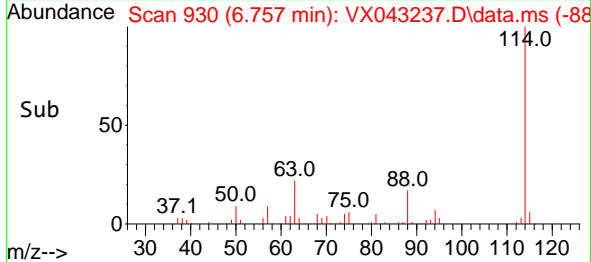
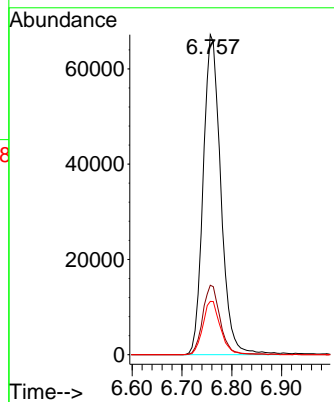


#34
 1,4-Difluorobenzene
 Concen: 50.000 ug/l
 RT: 6.757 min Scan# 91
 Delta R.T. -0.000 min
 Lab File: VX043237.D
 Acq: 02 Oct 2024 17:27

Instrument :
 MSVOA_X
 ClientSampleId :

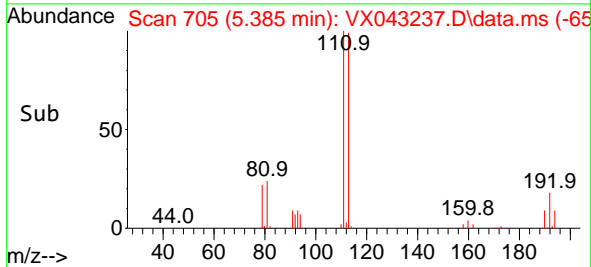
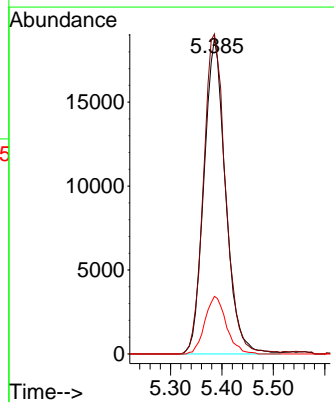
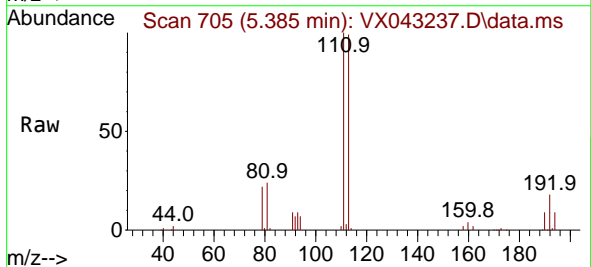


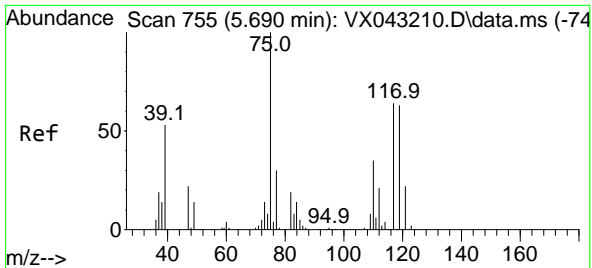
Tgt Ion:114 Resp: 164952
 Ion Ratio Lower Upper
 114 100
 63 21.7 0.0 43.0
 88 16.7 0.0 33.0



#35
 Dibromofluoromethane
 Concen: 48.305 ug/l
 RT: 5.385 min Scan# 705
 Delta R.T. -0.000 min
 Lab File: VX043237.D
 Acq: 02 Oct 2024 17:27

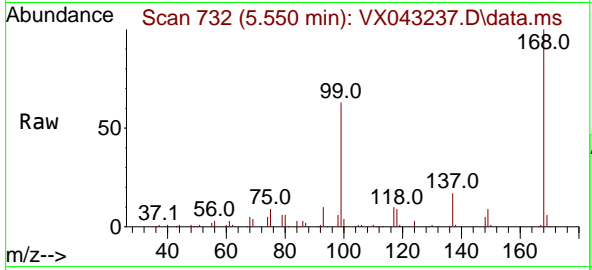
Tgt Ion:113 Resp: 54951
 Ion Ratio Lower Upper
 113 100
 111 103.4 83.4 125.0
 192 18.0 14.1 21.1



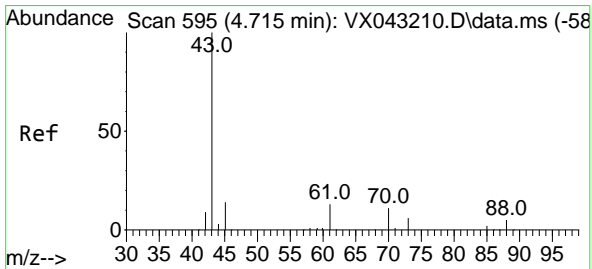
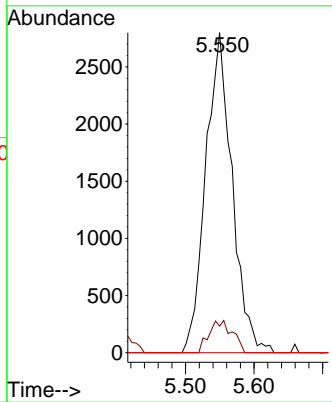
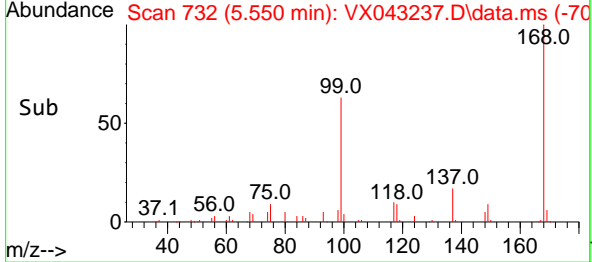


#36
 1,1-Dichloropropene
 Concen: 5.219 ug/l
 RT: 5.550 min Scan# 71
 Delta R.T. -0.140 min
 Lab File: VX043237.D
 Acq: 02 Oct 2024 17:27

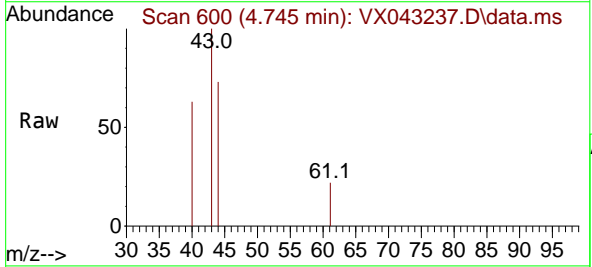
Instrument :
 MSVOA_X
 ClientSampleId :



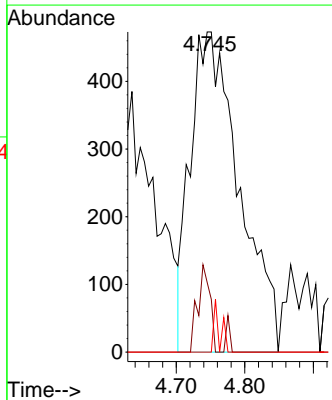
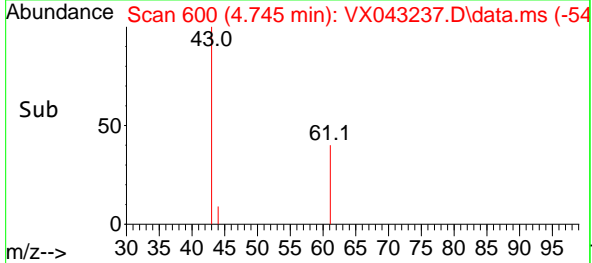
Tgt Ion: 75 Resp: 7501
 Ion Ratio Lower Upper
 75 100
 110 8.9 17.8 53.3#
 77 0.0 24.9 37.3#

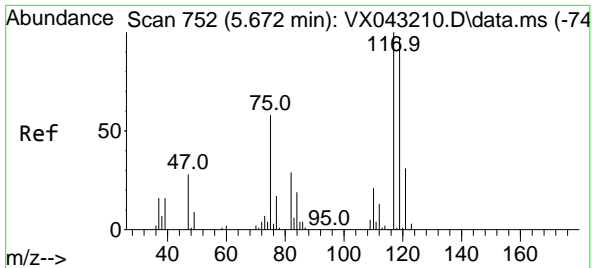


#37
 Ethyl Acetate
 Concen: 1.363 ug/l
 RT: 4.745 min Scan# 600
 Delta R.T. 0.030 min
 Lab File: VX043237.D
 Acq: 02 Oct 2024 17:27



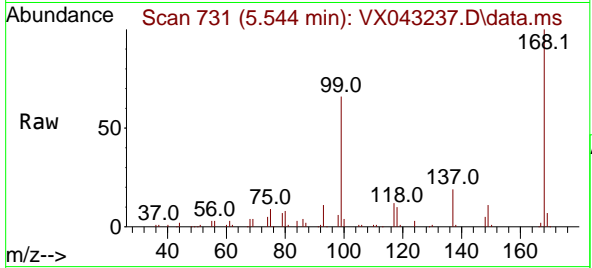
Tgt Ion: 43 Resp: 2353
 Ion Ratio Lower Upper
 43 100
 61 6.8 11.0 16.4#
 70 0.0 8.9 13.3#





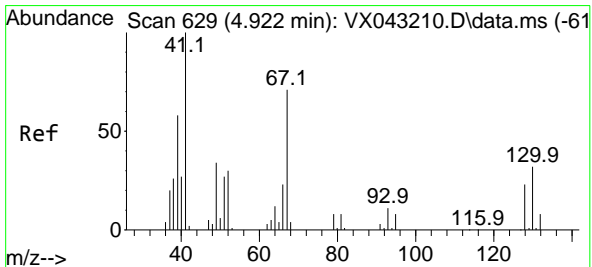
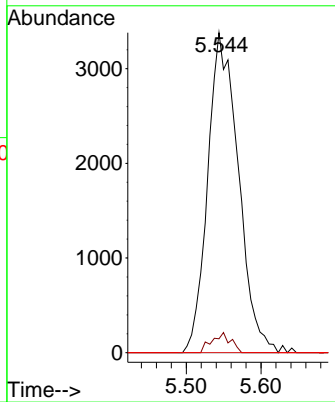
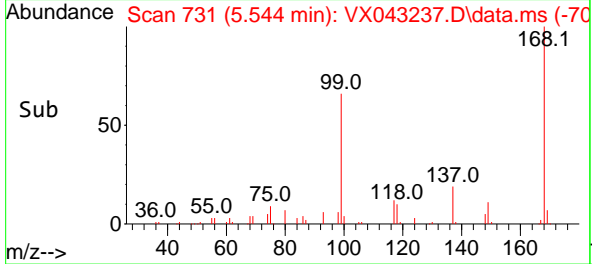
#38
 Carbon Tetrachloride
 Concen: 5.665 ug/l
 RT: 5.544 min Scan# 711
 Delta R.T. -0.128 min
 Lab File: VX043237.D
 Acq: 02 Oct 2024 17:27

Instrument : MSVOA_X
 ClientSampleId :

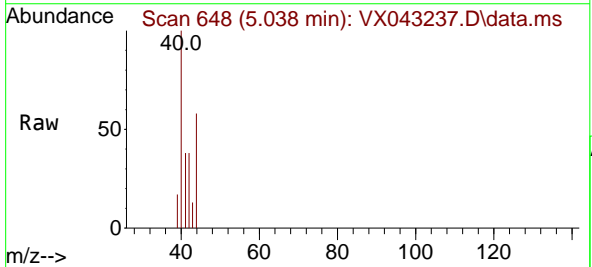


Tgt Ion: 117 Resp: 9637

Ion	Ratio	Lower	Upper
117	100		
119	4.4	77.7	116.5#
121	0.0	24.3	36.5#

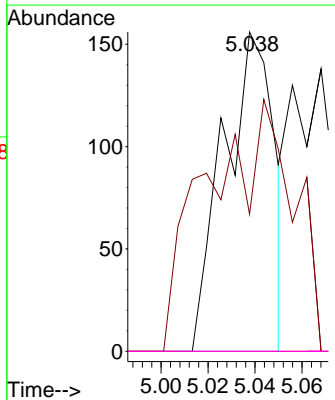
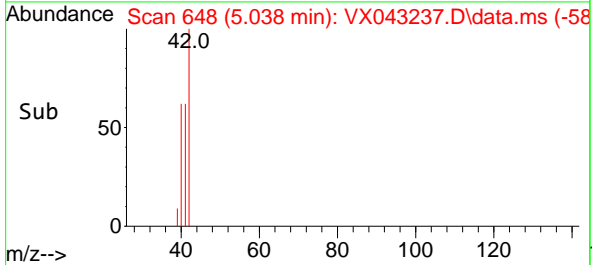


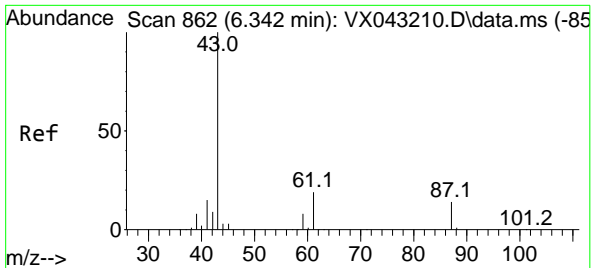
#41
 Methacrylonitrile
 Concen: 0.260 ug/l
 RT: 5.038 min Scan# 648
 Delta R.T. 0.116 min
 Lab File: VX043237.D
 Acq: 02 Oct 2024 17:27



Tgt Ion: 41 Resp: 234

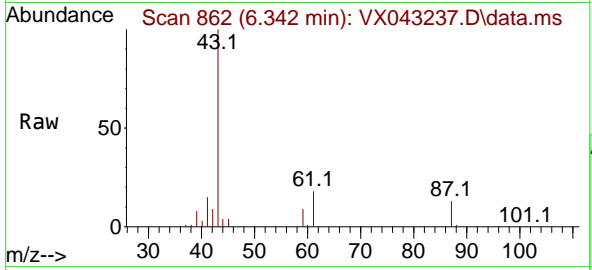
Ion	Ratio	Lower	Upper
41	100		
39	47.9	45.0	67.4
67	0.0	56.0	84.0#
52	0.0	25.6	38.4#



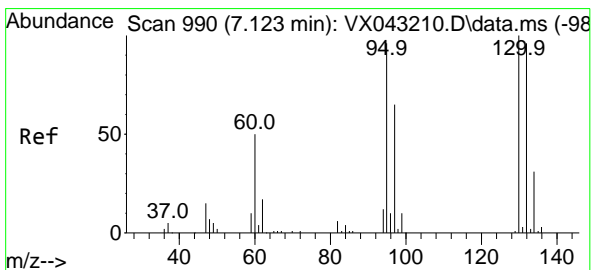
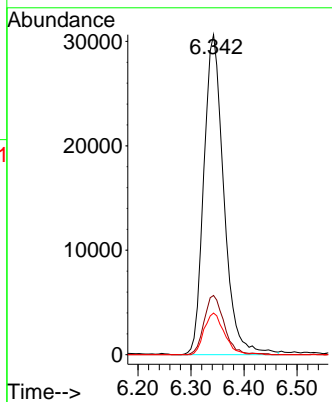
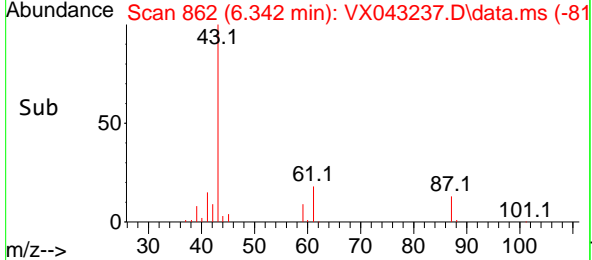


#43
 Isopropyl Acetate
 Concen: 28.164 ug/l
 RT: 6.342 min Scan# 80
 Delta R.T. -0.000 min
 Lab File: VX043237.D
 Acq: 02 Oct 2024 17:27

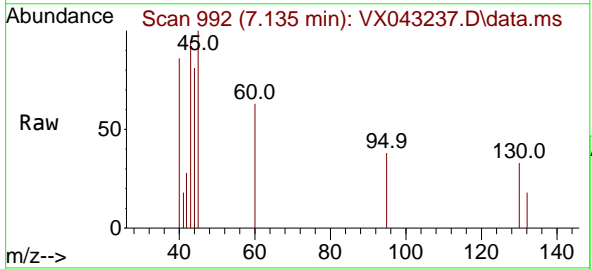
Instrument : MSVOA_X
 ClientSampleId :



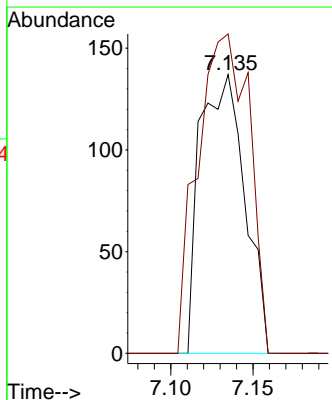
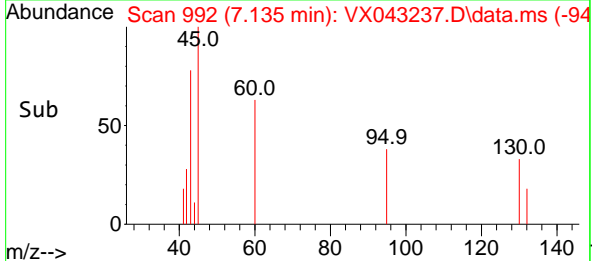
Tgt Ion: 43 Resp: 80283
 Ion Ratio Lower Upper
 43 100
 61 18.7 15.1 22.7
 87 13.0 10.8 16.2

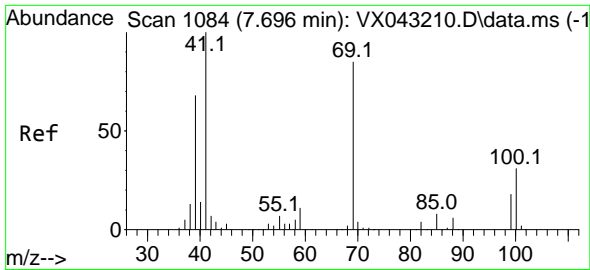


#44
 Trichloroethene
 Concen: 0.225 ug/l
 RT: 7.135 min Scan# 992
 Delta R.T. 0.012 min
 Lab File: VX043237.D
 Acq: 02 Oct 2024 17:27



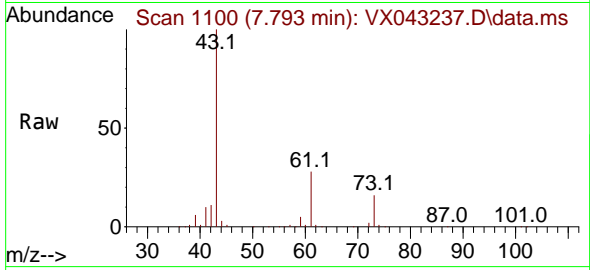
Tgt Ion:130 Resp: 260
 Ion Ratio Lower Upper
 130 100
 95 114.6 0.0 192.2



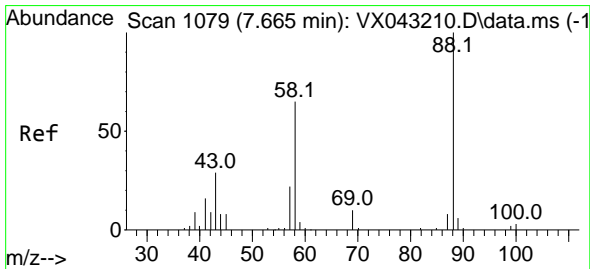
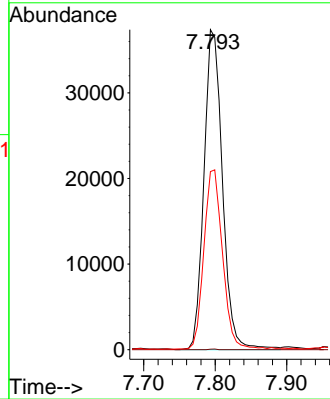
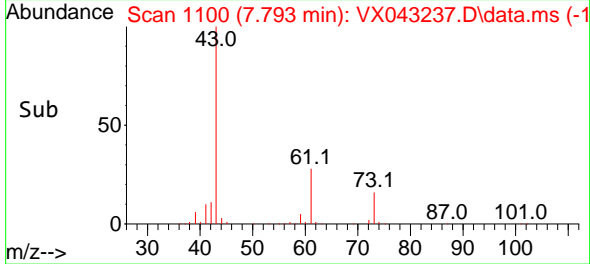


#48
 Methyl methacrylate
 Concen: 48.137 ug/l
 RT: 7.793 min Scan# 1100
 Delta R.T. 0.097 min
 Lab File: VX043237.D
 Acq: 02 Oct 2024 17:27

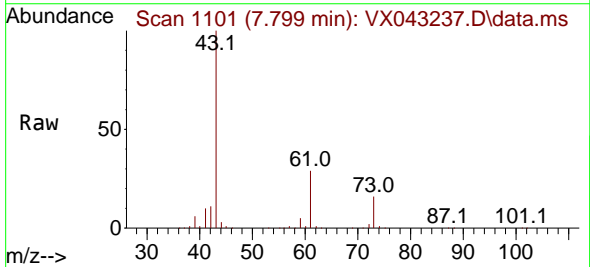
Instrument :
 MSVOA_X
 ClientSampleId :



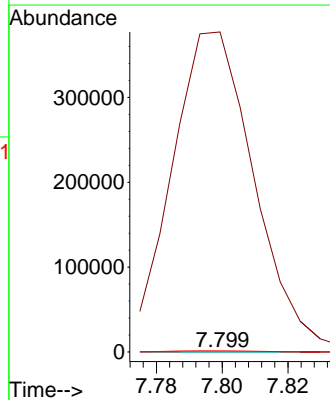
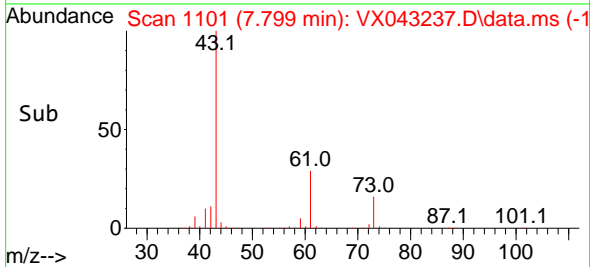
Tgt Ion: 41 Resp: 67327
 Ion Ratio Lower Upper
 41 100
 69 0.1 64.1 96.1#
 39 56.0 52.8 79.2

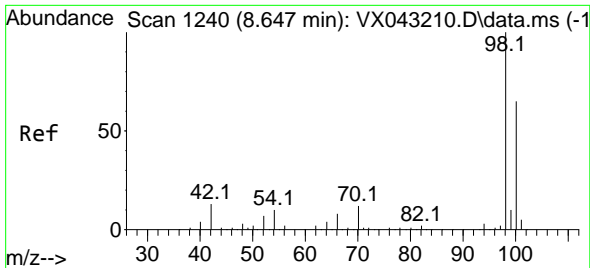


#49
 1,4-Dioxane
 Concen: 2.170 ug/l
 RT: 7.799 min Scan# 1101
 Delta R.T. 0.134 min
 Lab File: VX043237.D
 Acq: 02 Oct 2024 17:27



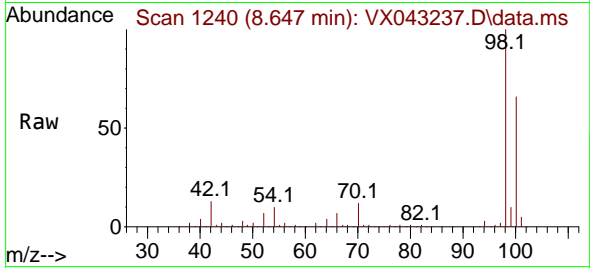
Tgt Ion: 88 Resp: 59
 Ion Ratio Lower Upper
 88 100
 43 1148157.6 29.5 44.3#
 58 4613.6 55.2 82.8#



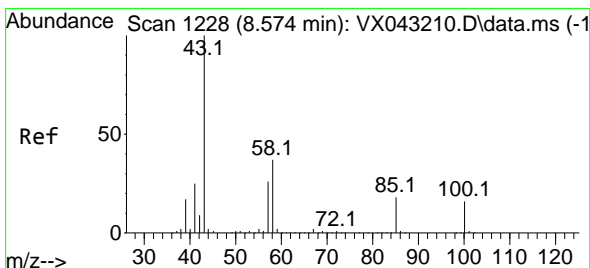
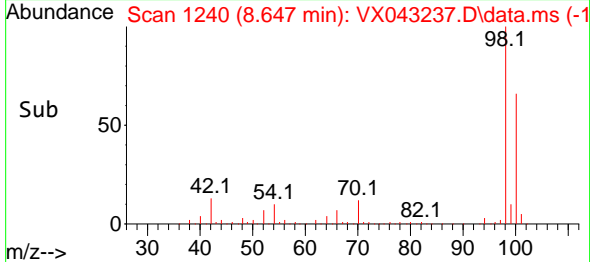
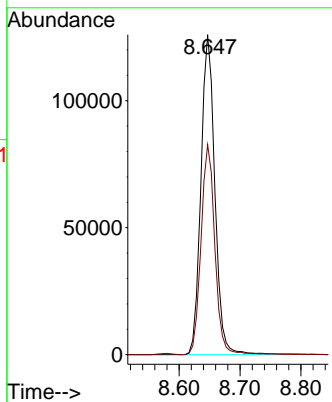


#50
 Toluene-d8
 Concen: 50.878 ug/l
 RT: 8.647 min Scan# 11
 Delta R.T. -0.000 min
 Lab File: VX043237.D
 Acq: 02 Oct 2024 17:27

Instrument :
 MSVOA_X
 ClientSampleId :

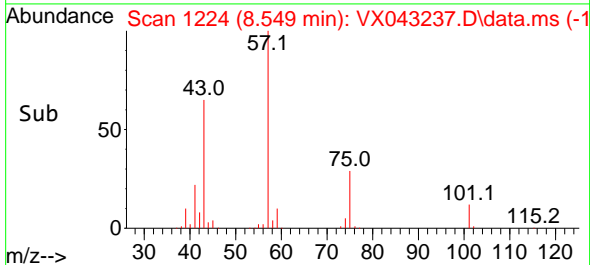
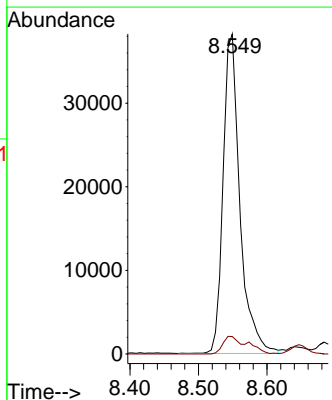
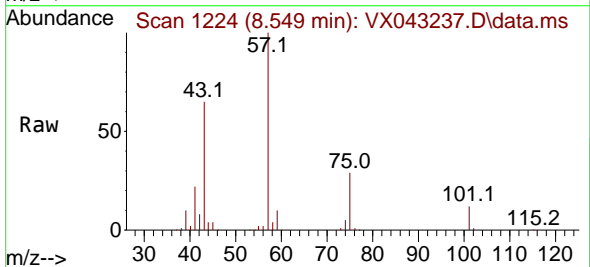


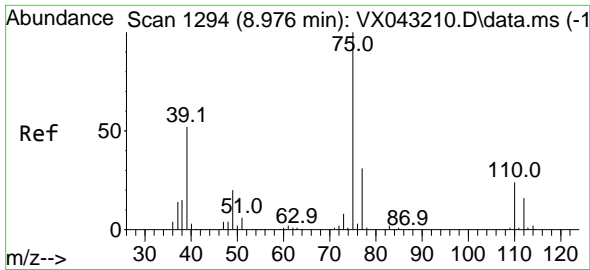
Tgt Ion: 98 Resp: 200574
 Ion Ratio Lower Upper
 98 100
 100 65.4 52.4 78.6



#51
 4-Methyl-2-Pentanone
 Concen: 37.495 ug/l
 RT: 8.549 min Scan# 1224
 Delta R.T. -0.024 min
 Lab File: VX043237.D
 Acq: 02 Oct 2024 17:27

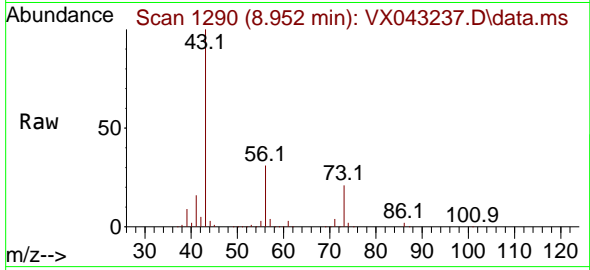
Tgt Ion: 43 Resp: 64914
 Ion Ratio Lower Upper
 43 100
 58 8.1 30.0 45.0#



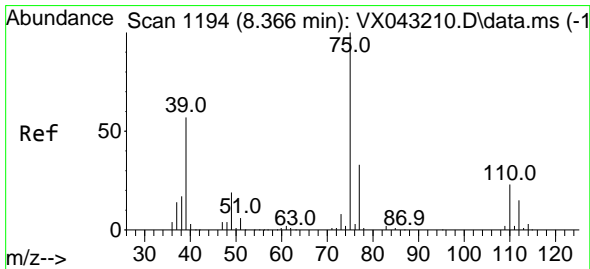
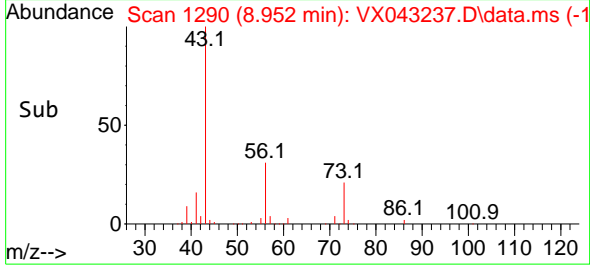
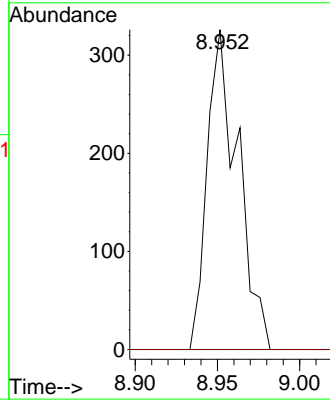


#53
 t-1,3-Dichloropropene
 Concen: 0.254 ug/l
 RT: 8.952 min Scan# 1124
 Delta R.T. -0.024 min
 Lab File: VX043237.D
 Acq: 02 Oct 2024 17:27

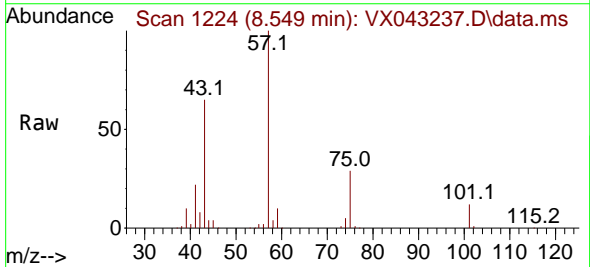
Instrument : MSVOA_X
 ClientSampleId :



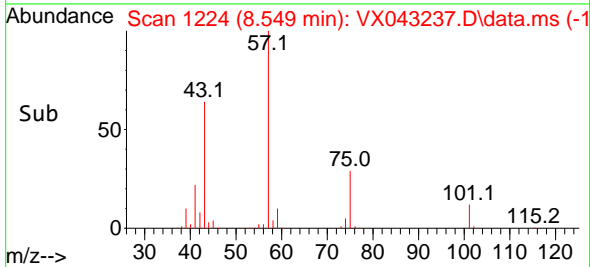
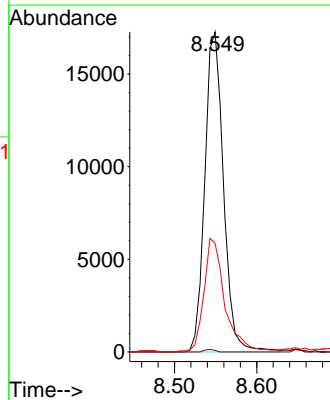
Tgt Ion: 75 Resp: 425
 Ion Ratio Lower Upper
 75 100
 77 0.0 25.1 37.7#

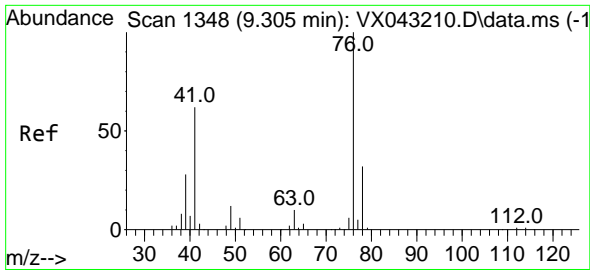


#54
 cis-1,3-Dichloropropene
 Concen: 15.164 ug/l
 RT: 8.549 min Scan# 1224
 Delta R.T. 0.183 min
 Lab File: VX043237.D
 Acq: 02 Oct 2024 17:27



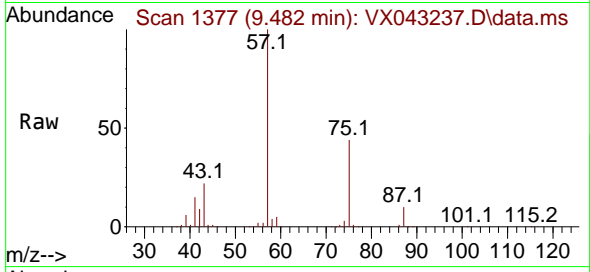
Tgt Ion: 75 Resp: 27225
 Ion Ratio Lower Upper
 75 100
 77 0.5 26.0 39.0#
 39 33.6 45.8 68.8#



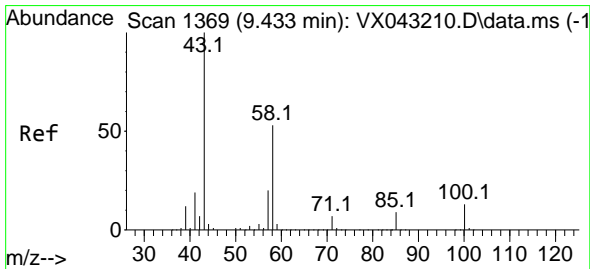
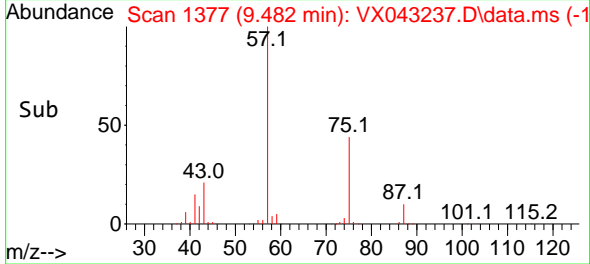
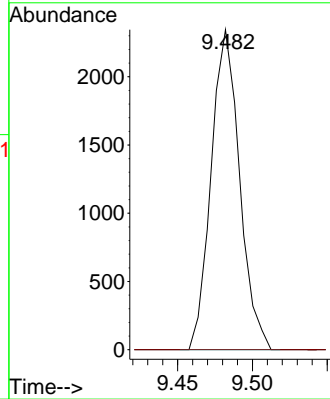


#57
 1,3-Dichloropropane
 Concen: 1.677 ug/l
 RT: 9.482 min Scan# 1377
 Delta R.T. 0.177 min
 Lab File: VX043237.D
 Acq: 02 Oct 2024 17:27

Instrument : MSVOA_X
 ClientSampleId :

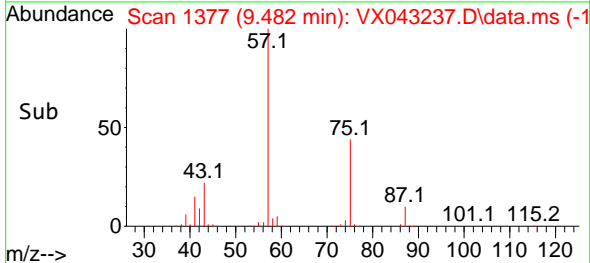
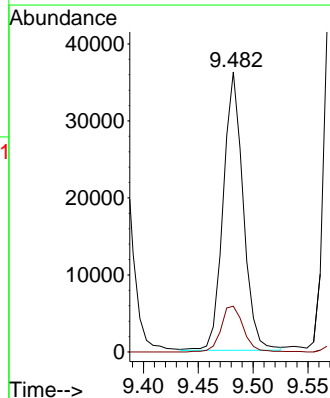
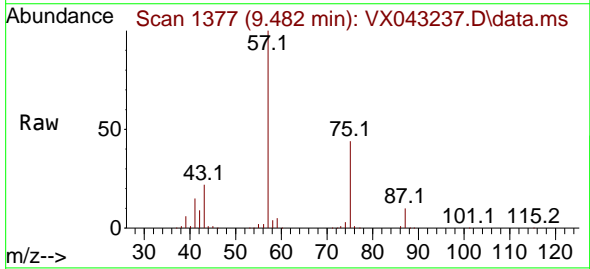


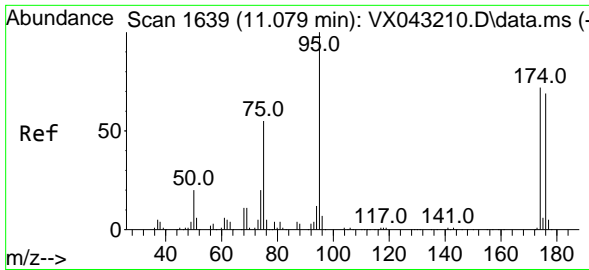
Tgt Ion: 76 Resp: 3100
 Ion Ratio Lower Upper
 76 100
 78 0.0 25.7 38.5#



#59
 2-Hexanone
 Concen: 35.031 ug/l
 RT: 9.482 min Scan# 1377
 Delta R.T. 0.049 min
 Lab File: VX043237.D
 Acq: 02 Oct 2024 17:27

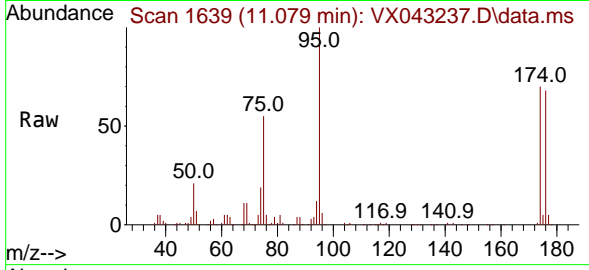
Tgt Ion: 43 Resp: 45864
 Ion Ratio Lower Upper
 43 100
 58 18.5 26.1 78.3#



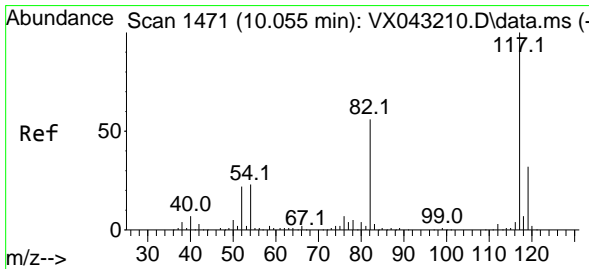
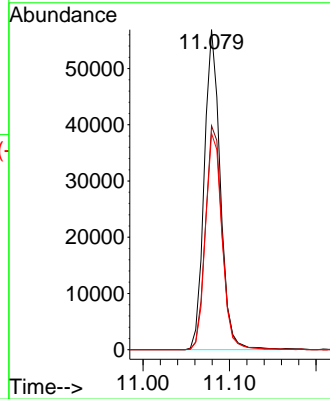
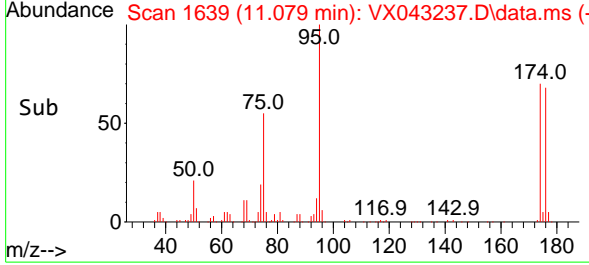


#62
 4-Bromofluorobenzene
 Concen: 51.030 ug/l
 RT: 11.079 min Scan# 1639
 Delta R.T. -0.000 min
 Lab File: VX043237.D
 Acq: 02 Oct 2024 17:27

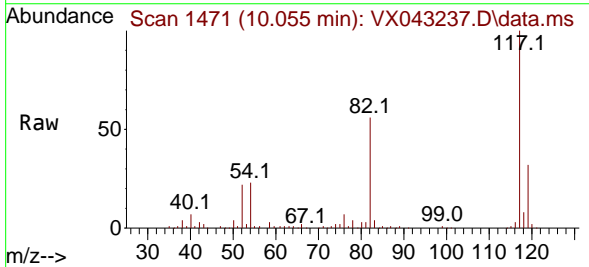
Instrument : MSVOA_X
 ClientSampleId :



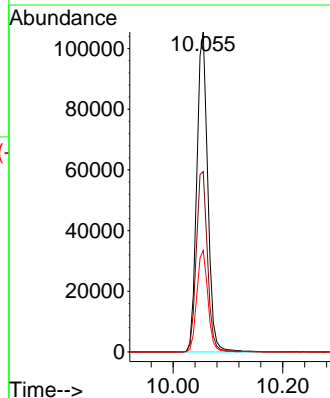
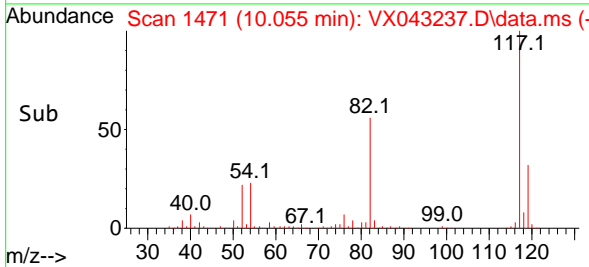
Tgt Ion: 95 Resp: 73084
 Ion Ratio Lower Upper
 95 100
 174 73.1 0.0 145.0
 176 69.9 0.0 143.0

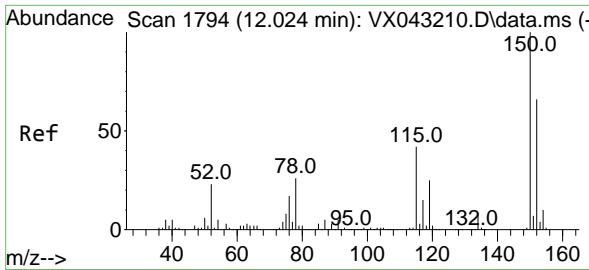


#63
 Chlorobenzene-d5
 Concen: 50.000 ug/l
 RT: 10.055 min Scan# 1471
 Delta R.T. -0.000 min
 Lab File: VX043237.D
 Acq: 02 Oct 2024 17:27



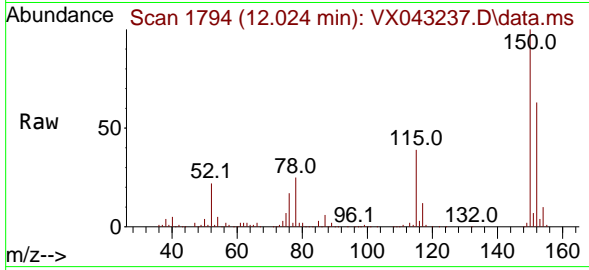
Tgt Ion: 117 Resp: 147477
 Ion Ratio Lower Upper
 117 100
 82 56.4 45.0 67.6
 119 31.8 25.3 37.9



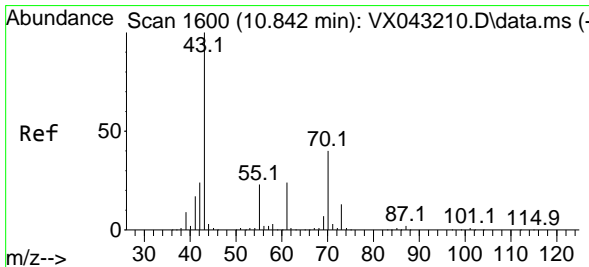
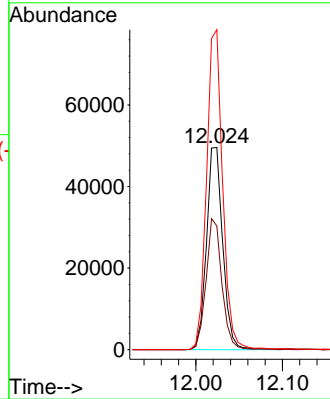
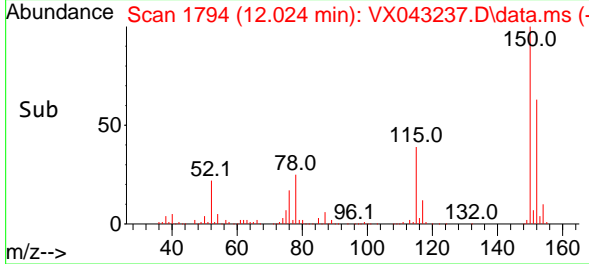


#72
 1,4-Dichlorobenzene-d4
 Concen: 50.000 ug/l
 RT: 12.024 min Scan# 11
 Delta R.T. -0.000 min
 Lab File: VX043237.D
 Acq: 02 Oct 2024 17:27

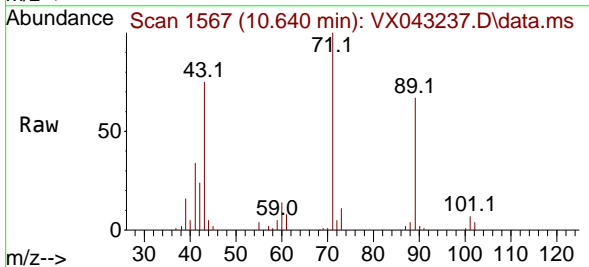
Instrument :
 MSVOA_X
 ClientSampleId :



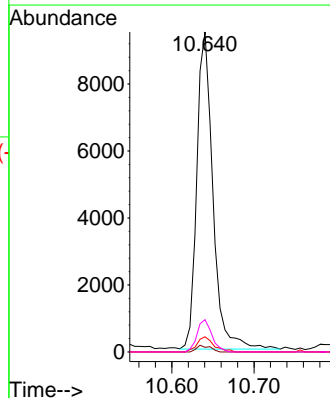
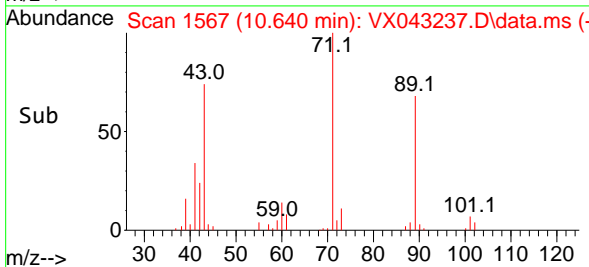
Tgt Ion:152 Resp: 64669
 Ion Ratio Lower Upper
 152 100
 115 63.1 44.1 132.3
 150 156.3 0.0 347.4

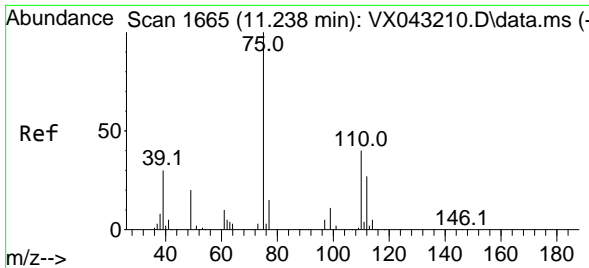


#74
 N-amy1 acetate
 Concen: 5.402 ug/l
 RT: 10.640 min Scan# 1567
 Delta R.T. -0.201 min
 Lab File: VX043237.D
 Acq: 02 Oct 2024 17:27



Tgt Ion: 43 Resp: 12894
 Ion Ratio Lower Upper
 43 100
 70 1.8 33.1 49.7#
 55 5.0 18.6 27.8#
 61 9.4 18.7 28.1#

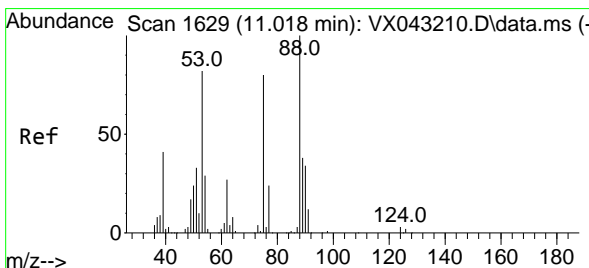
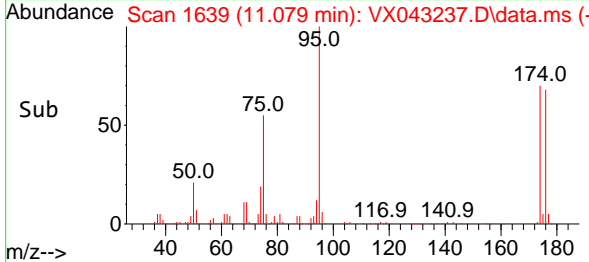
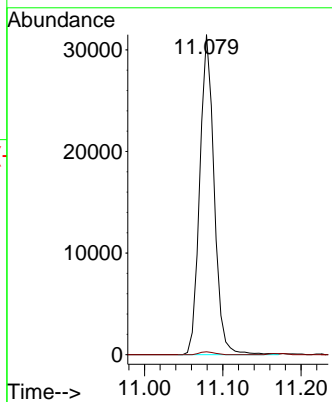
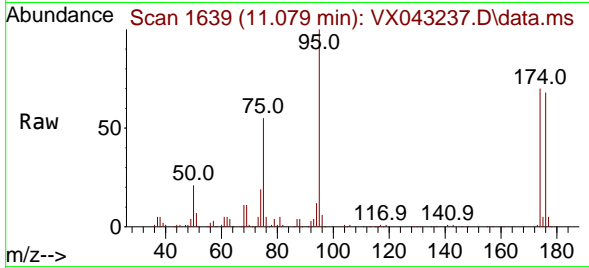




#76
 1,2,3-Trichloropropane
 Concen: 28.015 ug/l
 RT: 11.079 min Scan# 1639
 Delta R.T. -0.159 min
 Lab File: VX043237.D
 Acq: 02 Oct 2024 17:27

Instrument : MSVOA_X
 ClientSampleId :

Tgt Ion: 75 Resp: 40186
 Ion Ratio Lower Upper
 75 100
 77 0.9 22.0 66.0#



#81
 trans-1,4-Dichloro-2-butene
 Concen: 72.606 ug/l
 RT: 11.079 min Scan# 1639
 Delta R.T. 0.061 min
 Lab File: VX043237.D
 Acq: 02 Oct 2024 17:27

Tgt Ion: 75 Resp: 40186
 Ion Ratio Lower Upper
 75 100
 53 0.0 83.9 125.9#
 89 0.1 38.6 58.0#

