

Data Path : Z:\voasrv\HPCHEM1\MSVOA_X\Data\VX100224\
 Data File : VX043240.D
 Acq On : 02 Oct 2024 18:37
 Operator : JC/MD
 Sample : P4242-04
 Misc : 5.0mL/MSVOA_X/WATER
 ALS Vial : 26 Sample Multiplier: 1

Instrument :
 MSVOA_X
 ClientSampleId :

Quant Time: Oct 03 02:37:50 2024
 Quant Method : Z:\voasrv\HPCHEM1\MSVOA_X\Method\82X100124W.M
 Quant Title : SW846 8260
 QLast Update : Wed Oct 02 16:50:57 2024
 Response via : Initial Calibration

Compound	R.T.	QIon	Response	Conc	Units	Dev(Min)

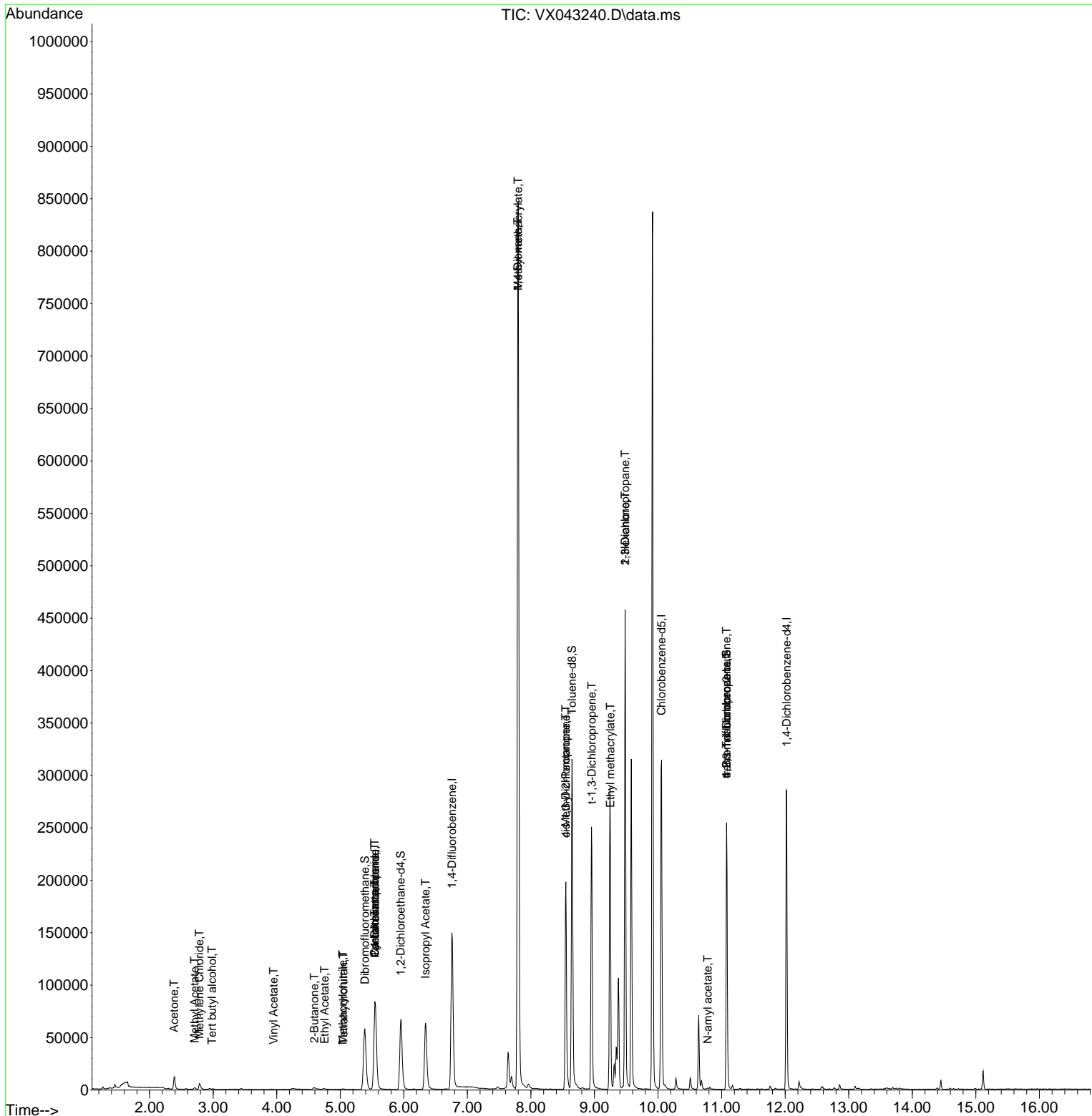
Internal Standards						
1) Pentafluorobenzene	5.550	168	76288	50.000	ug/l	0.00
34) 1,4-Difluorobenzene	6.757	114	151070	50.000	ug/l	0.00
63) Chlorobenzene-d5	10.055	117	136426	50.000	ug/l	0.00
72) 1,4-Dichlorobenzene-d4	12.024	152	59897	50.000	ug/l	0.00
System Monitoring Compounds						
33) 1,2-Dichloroethane-d4	5.952	65	68487	54.970	ug/l	0.00
Spiked Amount	50.000	Range	74 - 125	Recovery	=	109.940%
35) Dibromofluoromethane	5.385	113	50292	48.272	ug/l	0.00
Spiked Amount	50.000	Range	75 - 124	Recovery	=	96.540%
50) Toluene-d8	8.647	98	182780	50.625	ug/l	0.00
Spiked Amount	50.000	Range	86 - 113	Recovery	=	101.260%
62) 4-Bromofluorobenzene	11.079	95	67581	51.524	ug/l	0.00
Spiked Amount	50.000	Range	77 - 121	Recovery	=	103.040%
Target Compounds						
						Qvalue
11) Tert butyl alcohol	2.983	59	770	3.248	ug/l #	71
16) Acetone	2.386	43	14610	28.080	ug/l	93
18) Methyl Acetate	2.709	43	2405	1.843	ug/l	93
20) Methylene Chloride	2.782	84	3120	3.252	ug/l	91
23) Vinyl Acetate	3.952	43	38	6.351	ug/l #	71
25) 2-Butanone	4.593	43	4213	5.906	ug/l	93
29) Tetrahydrofuran	5.050	42	410	0.902	ug/l #	42
31) Cyclohexane	5.544	56	1978	1.471	ug/l #	38
36) 1,1-Dichloropropene	5.544	75	6939	5.272	ug/l #	48
37) Ethyl Acetate	4.751	43	2644	1.673	ug/l #	73
38) Carbon Tetrachloride	5.544	117	8597	5.518	ug/l #	18
41) Methacrylonitrile	5.038	41	310	0.377	ug/l #	48
43) Isopropyl Acetate	6.342	43	89670	34.348	ug/l	100
48) Methyl methacrylate	7.799	41	79611	62.150	ug/l #	45
49) 1,4-Dioxane	7.793	88	121	4.859	ug/l #	1
51) 4-Methyl-2-Pentanone	8.549	43	72324	45.614	ug/l #	50
53) t-1,3-Dichloropropene	8.958	75	463	0.302	ug/l #	43
54) cis-1,3-Dichloropropene	8.549	75	31002	18.854	ug/l #	60
56) Ethyl methacrylate	9.250	69	591	0.364	ug/l #	1
57) 1,3-Dichloropropane	9.482	76	4222	2.494	ug/l #	43
59) 2-Hexanone	9.482	43	56159	46.837	ug/l #	53
74) N-amyl acetate	10.780	43	744	0.337	ug/l #	44
76) 1,2,3-Trichloropropane	11.079	75	37114	27.935	ug/l #	34
81) trans-1,4-Dichloro-2-b...	11.079	75	37114	72.398	ug/l #	8

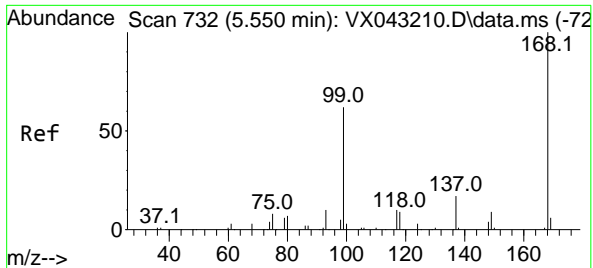
(#) = qualifier out of range (m) = manual integration (+) = signals summed

Data Path : Z:\voasrv\HPCHEM1\MSVOA_X\Data\VX100224\
 Data File : VX043240.D
 Acq On : 02 Oct 2024 18:37
 Operator : JC/MD
 Sample : P4242-04
 Misc : 5.0mL/MSVOA_X/WATER
 ALS Vial : 26 Sample Multiplier: 1

Instrument :
 MSVOA_X
 ClientSampleId :

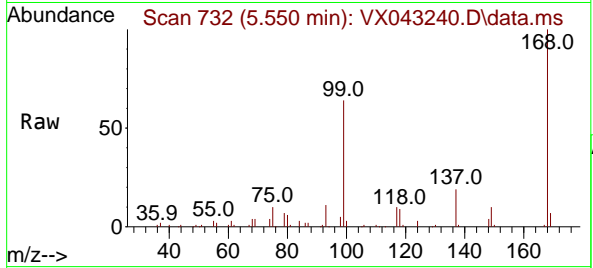
Quant Time: Oct 03 02:37:50 2024
 Quant Method : Z:\voasrv\HPCHEM1\MSVOA_X\Method\82X100124W.M
 Quant Title : SW846 8260
 QLast Update : Wed Oct 02 16:50:57 2024
 Response via : Initial Calibration



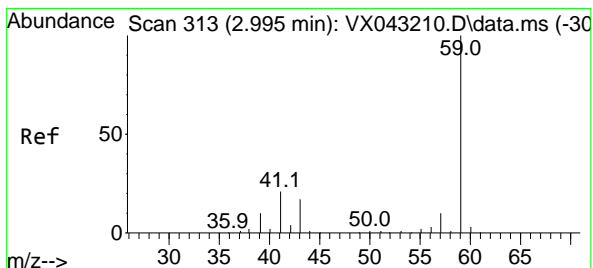
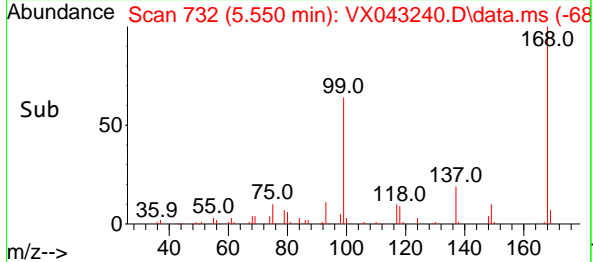
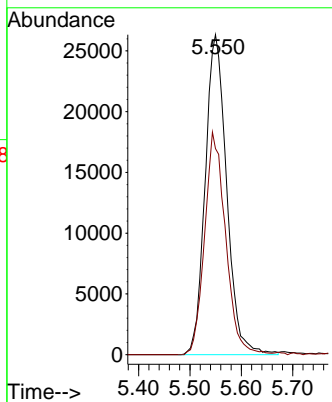


#1
 Pentafluorobenzene
 Concen: 50.000 ug/l
 RT: 5.550 min Scan# 71
 Delta R.T. -0.000 min
 Lab File: VX043240.D
 Acq: 02 Oct 2024 18:37

Instrument :
 MSVOA_X
 ClientSampleId :

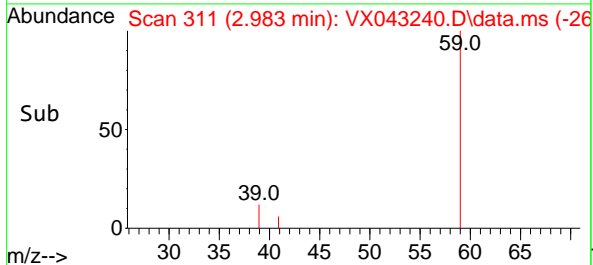
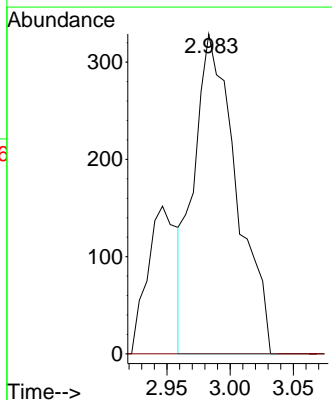
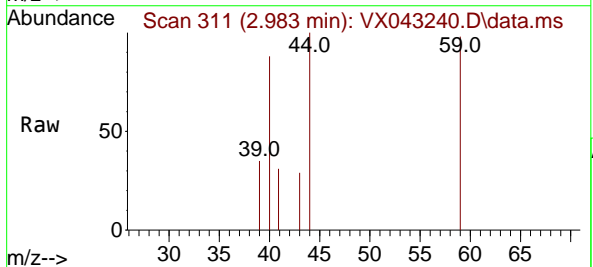


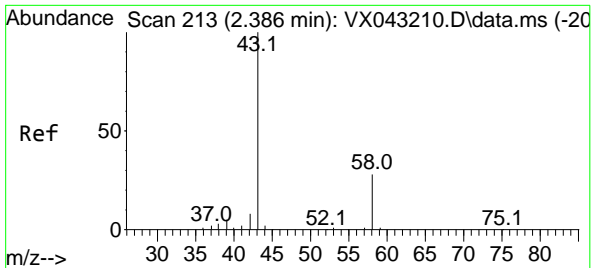
Tgt Ion:168 Resp: 76288
 Ion Ratio Lower Upper
 168 100
 99 64.4 49.7 74.5



#11
 Tert butyl alcohol
 Concen: 3.248 ug/l
 RT: 2.983 min Scan# 311
 Delta R.T. -0.012 min
 Lab File: VX043240.D
 Acq: 02 Oct 2024 18:37

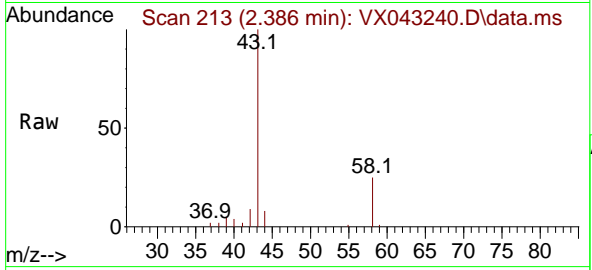
Tgt Ion: 59 Resp: 770
 Ion Ratio Lower Upper
 59 100
 57 0.0 8.6 13.0#



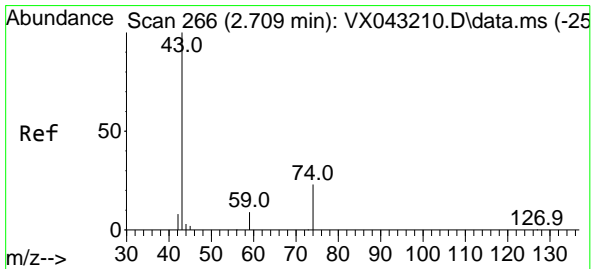
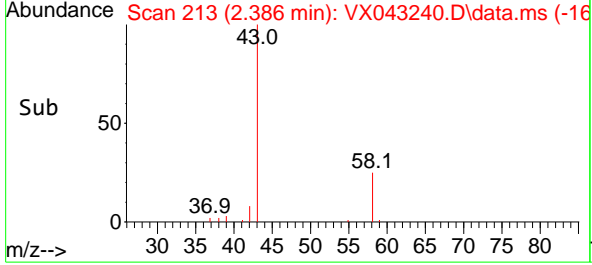
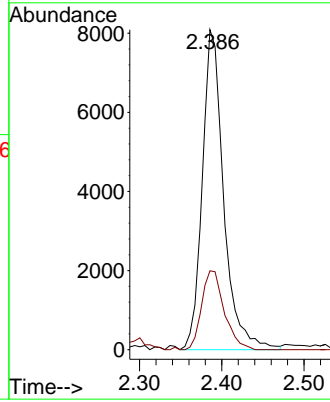


#16
 Acetone
 Concen: 28.080 ug/l
 RT: 2.386 min Scan# 216
 Delta R.T. -0.000 min
 Lab File: VX043240.D
 Acq: 02 Oct 2024 18:37

Instrument :
 MSVOA_X
 ClientSampleId :

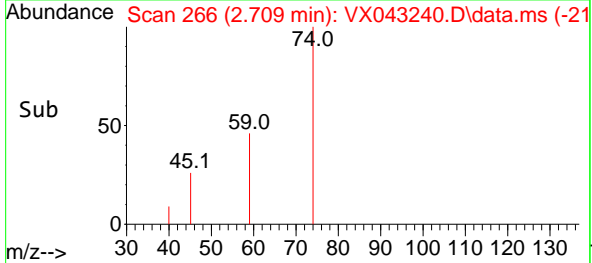
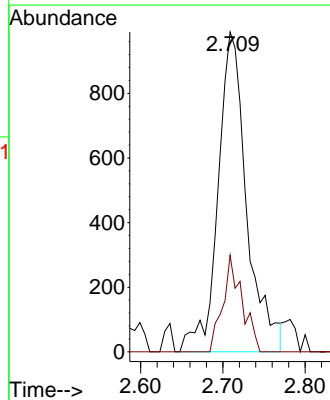
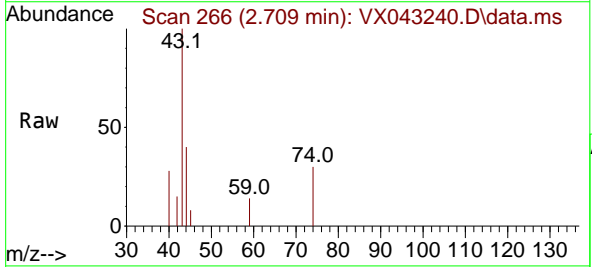


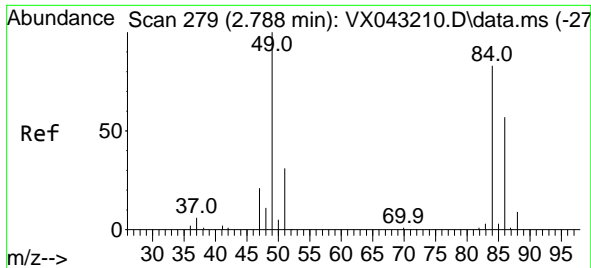
Tgt Ion: 43 Resp: 14610
 Ion Ratio Lower Upper
 43 100
 58 24.6 22.6 33.8



#18
 Methyl Acetate
 Concen: 1.843 ug/l
 RT: 2.709 min Scan# 266
 Delta R.T. -0.000 min
 Lab File: VX043240.D
 Acq: 02 Oct 2024 18:37

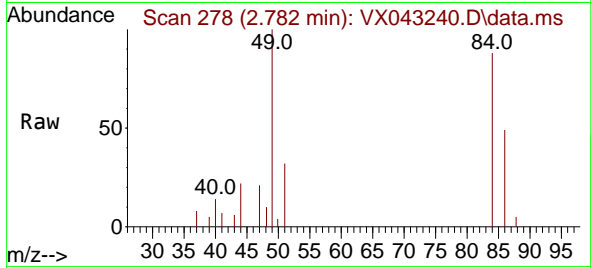
Tgt Ion: 43 Resp: 2405
 Ion Ratio Lower Upper
 43 100
 74 20.3 19.1 28.7





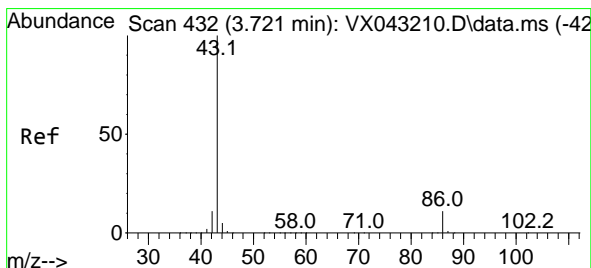
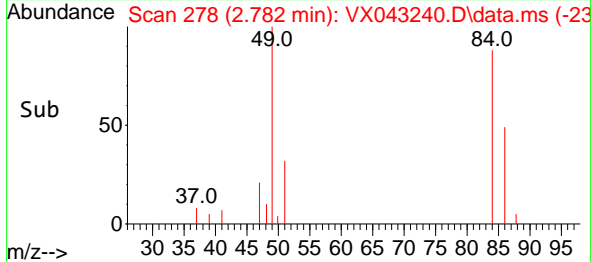
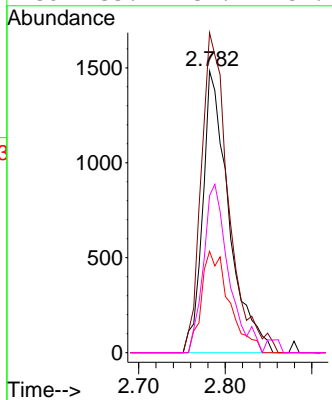
#20
 Methylene Chloride
 Concen: 3.252 ug/l
 RT: 2.782 min Scan# 21
 Delta R.T. -0.006 min
 Lab File: VX043240.D
 Acq: 02 Oct 2024 18:37

Instrument :
 MSVOA_X
 ClientSampleId :



Tgt Ion: 84 Resp: 3120

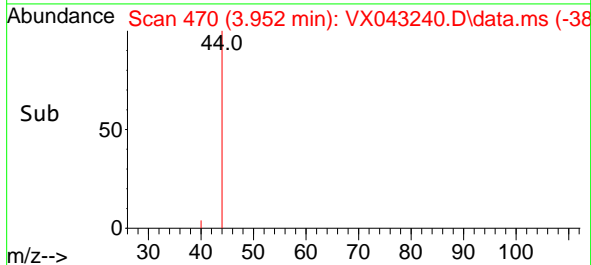
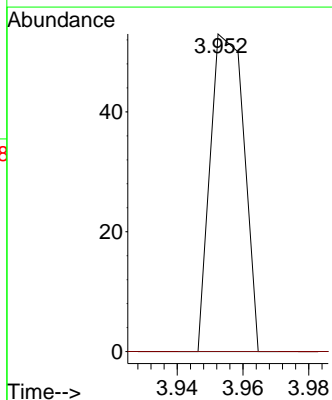
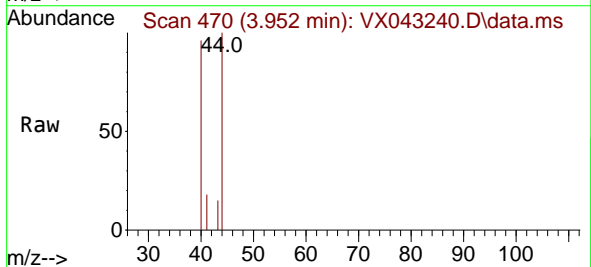
Ion	Ratio	Lower	Upper
84	100		
49	113.6	96.7	145.1
51	35.9	30.4	45.6
86	55.7	54.7	

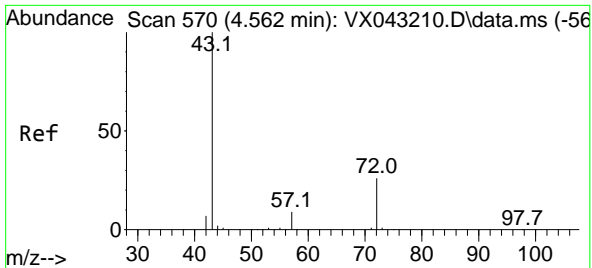


#23
 Vinyl Acetate
 Concen: 6.351 ug/l
 RT: 3.952 min Scan# 470
 Delta R.T. 0.231 min
 Lab File: VX043240.D
 Acq: 02 Oct 2024 18:37

Tgt Ion: 43 Resp: 38

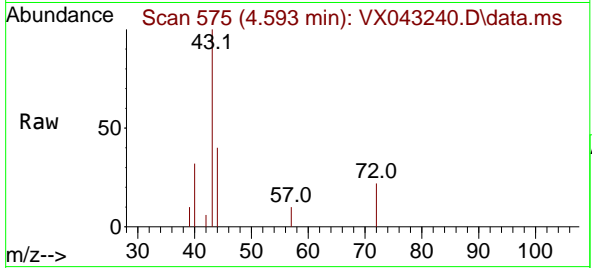
Ion	Ratio	Lower	Upper
43	100		
86	0.0	8.8	13.2#



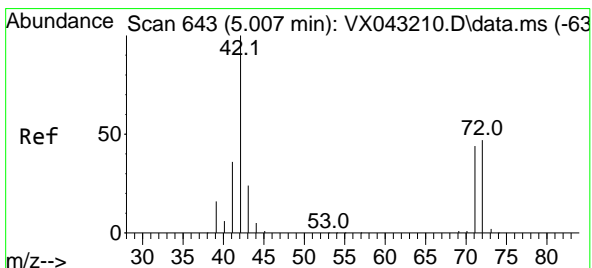
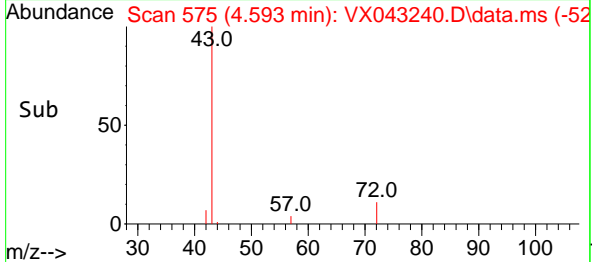
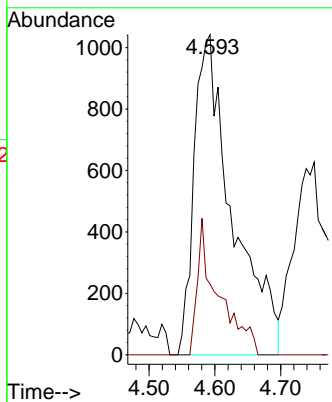


#25
 2-Butanone
 Concen: 5.906 ug/l
 RT: 4.593 min Scan# 51
 Delta R.T. 0.031 min
 Lab File: VX043240.D
 Acq: 02 Oct 2024 18:37

Instrument :
 MSVOA_X
 ClientSampleId :

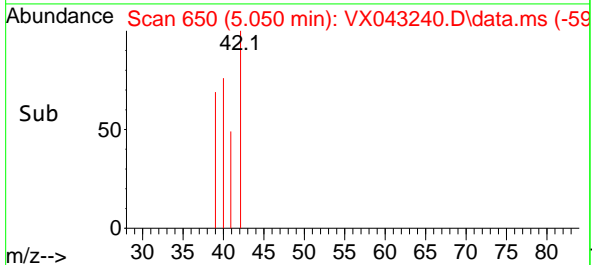
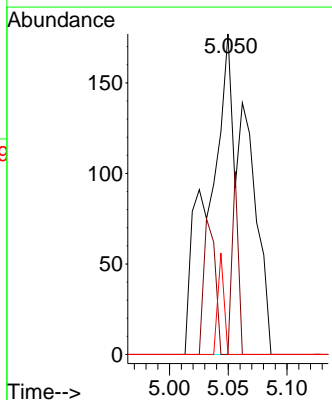
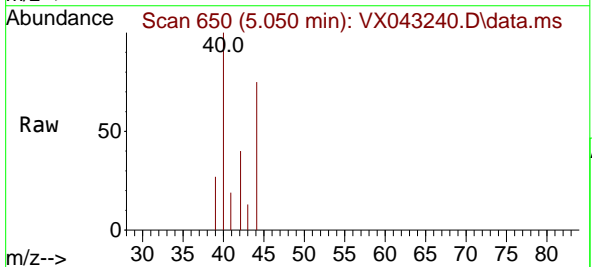


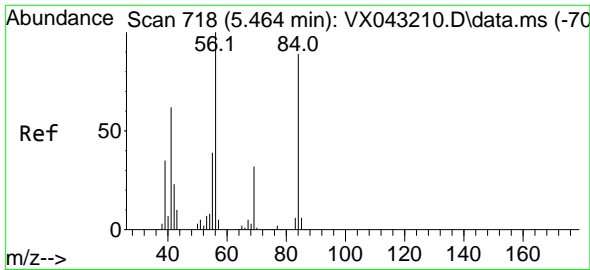
Tgt Ion: 43 Resp: 4213
 Ion Ratio Lower Upper
 43 100
 72 22.1 20.6 31.0



#29
 Tetrahydrofuran
 Concen: 0.902 ug/l
 RT: 5.050 min Scan# 650
 Delta R.T. 0.043 min
 Lab File: VX043240.D
 Acq: 02 Oct 2024 18:37

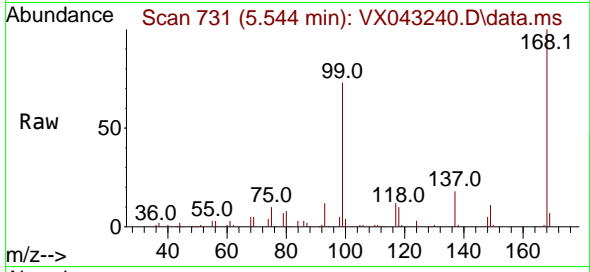
Tgt Ion: 42 Resp: 410
 Ion Ratio Lower Upper
 42 100
 72 9.0 37.7 56.5#
 71 4.9 34.6 52.0#



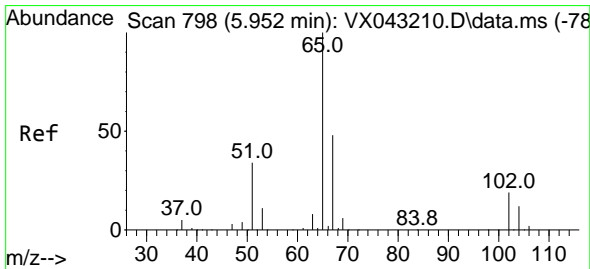
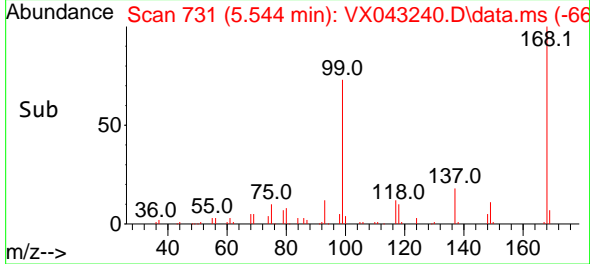
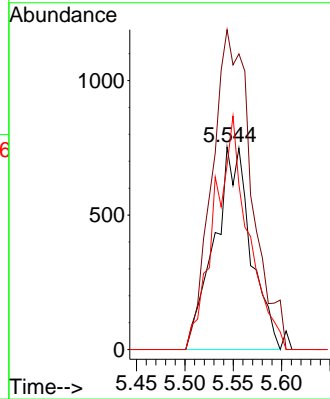


#31
 Cyclohexane
 Concen: 1.471 ug/l
 RT: 5.544 min Scan# 718
 Delta R.T. 0.079 min
 Lab File: VX043240.D
 Acq: 02 Oct 2024 18:37

Instrument :
 MSVOA_X
 ClientSampleId :

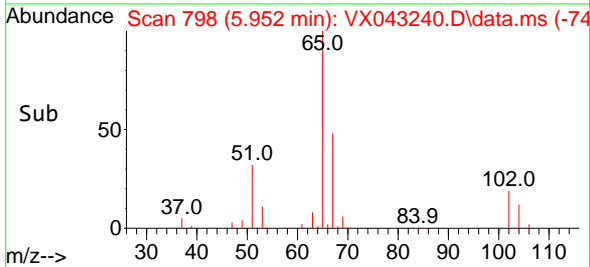
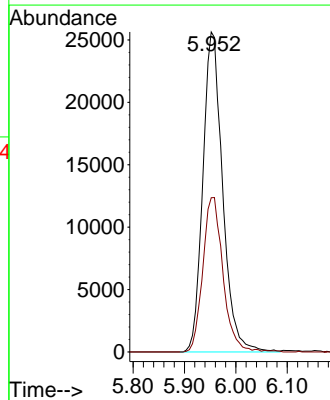
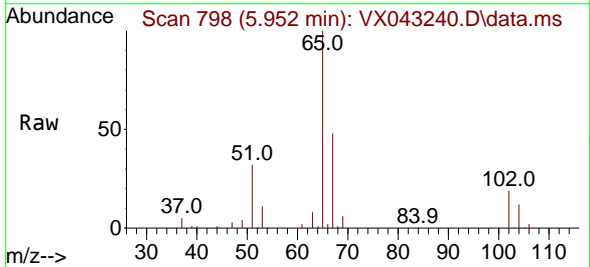


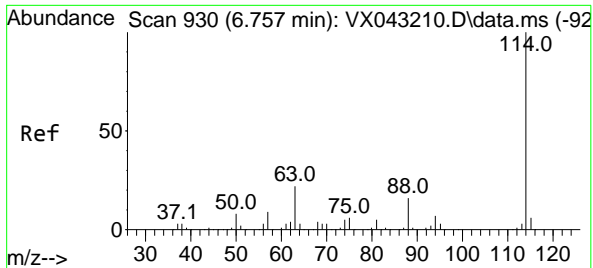
Tgt Ion: 56 Resp: 1978
 Ion Ratio Lower Upper
 56 100
 69 157.9 25.8 38.6#
 84 91.1 71.1 106.7



#33
 1,2-Dichloroethane-d4
 Concen: 54.970 ug/l
 RT: 5.952 min Scan# 798
 Delta R.T. -0.000 min
 Lab File: VX043240.D
 Acq: 02 Oct 2024 18:37

Tgt Ion: 65 Resp: 68487
 Ion Ratio Lower Upper
 65 100
 67 49.4 0.0 99.0



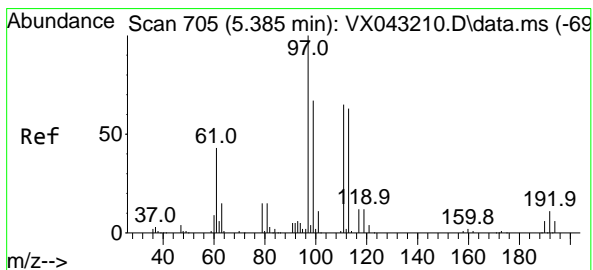
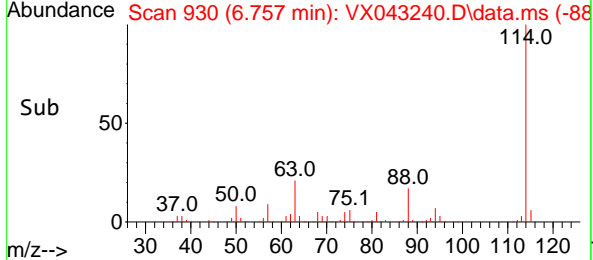
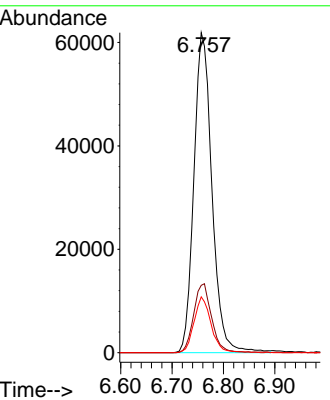
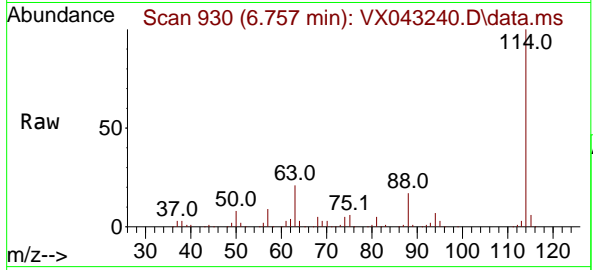


#34
 1,4-Difluorobenzene
 Concen: 50.000 ug/l
 RT: 6.757 min Scan# 91
 Delta R.T. -0.000 min
 Lab File: VX043240.D
 Acq: 02 Oct 2024 18:37

Instrument : MSVOA_X
 ClientSampleId :

Tgt Ion:114 Resp: 151070

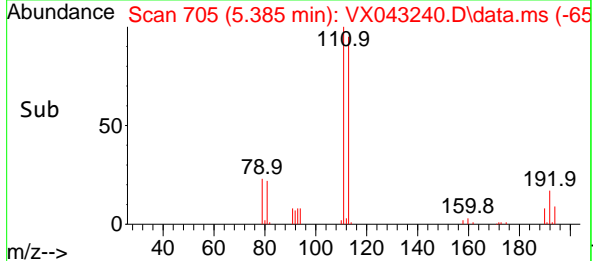
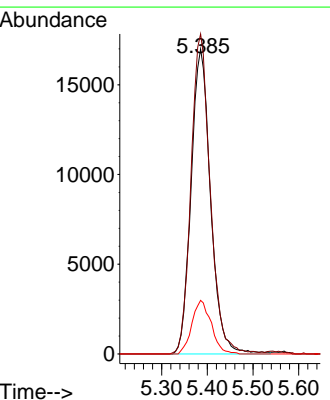
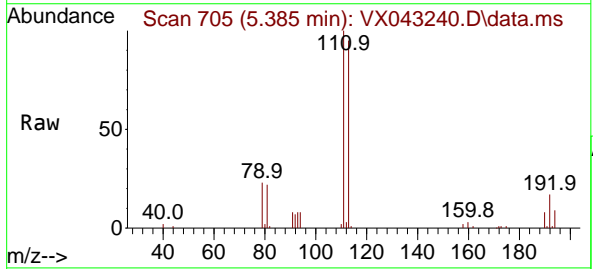
Ion	Ratio	Lower	Upper
114	100		
63	21.0	0.0	43.0
88	17.5	0.0	33.0

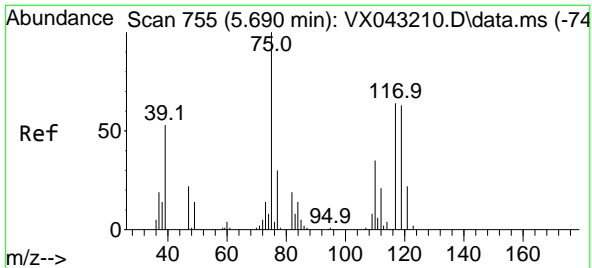


#35
 Dibromofluoromethane
 Concen: 48.272 ug/l
 RT: 5.385 min Scan# 705
 Delta R.T. -0.000 min
 Lab File: VX043240.D
 Acq: 02 Oct 2024 18:37

Tgt Ion:113 Resp: 50292

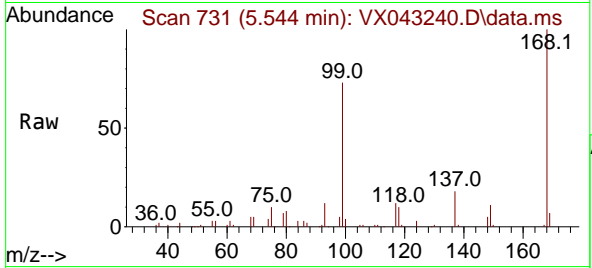
Ion	Ratio	Lower	Upper
113	100		
111	103.5	83.4	125.0
192	17.4	14.1	21.1





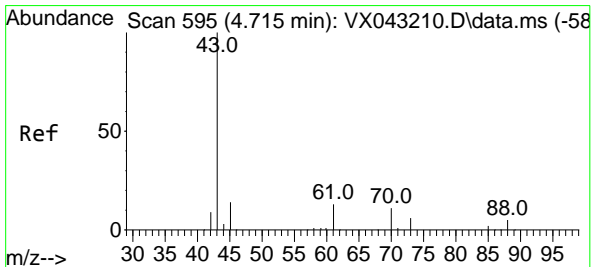
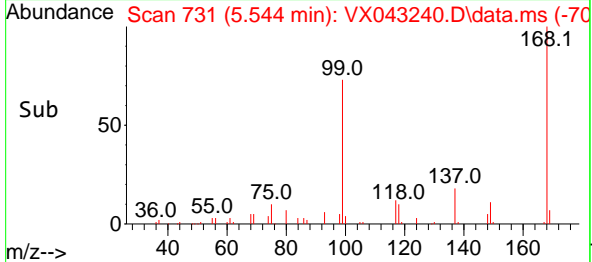
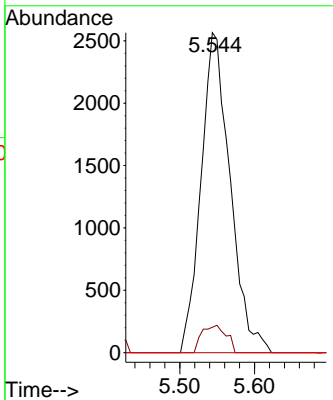
#36
 1,1-Dichloropropene
 Concen: 5.272 ug/l
 RT: 5.544 min Scan# 711
 Delta R.T. -0.146 min
 Lab File: VX043240.D
 Acq: 02 Oct 2024 18:37

Instrument :
 MSVOA_X
 ClientSampleId :



Tgt Ion: 75 Resp: 6939

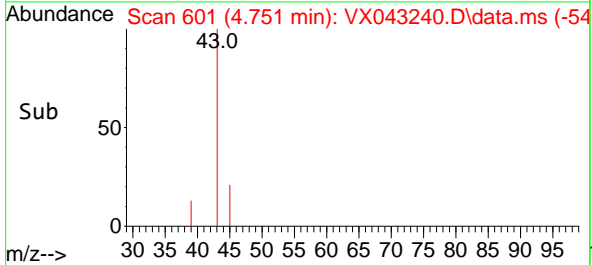
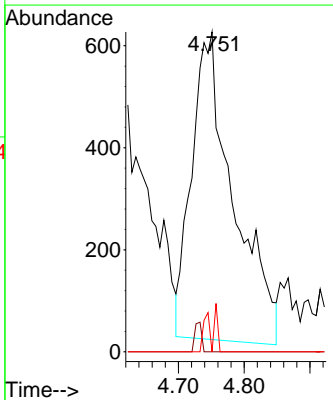
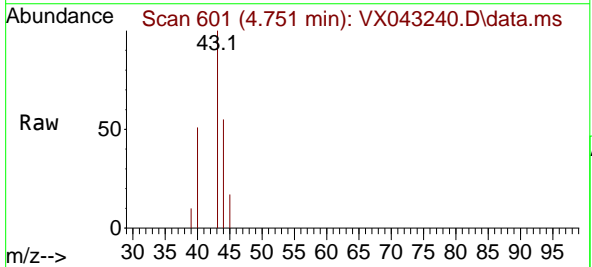
Ion	Ratio	Lower	Upper
75	100		
110	7.2	17.8	53.3#
77	0.0	24.9	37.3#

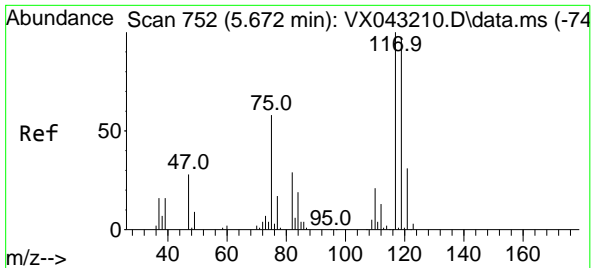


#37
 Ethyl Acetate
 Concen: 1.673 ug/l
 RT: 4.751 min Scan# 601
 Delta R.T. 0.036 min
 Lab File: VX043240.D
 Acq: 02 Oct 2024 18:37

Tgt Ion: 43 Resp: 2644

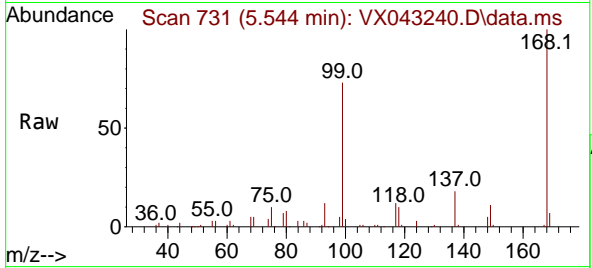
Ion	Ratio	Lower	Upper
43	100		
61	1.6	11.0	16.4#
70	1.9	8.9	13.3#





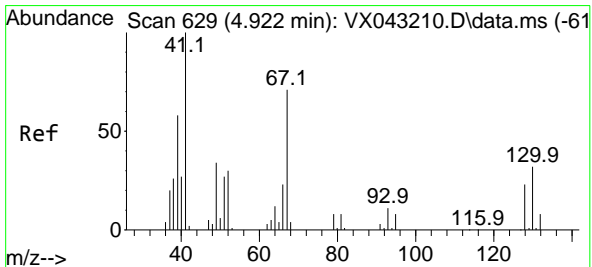
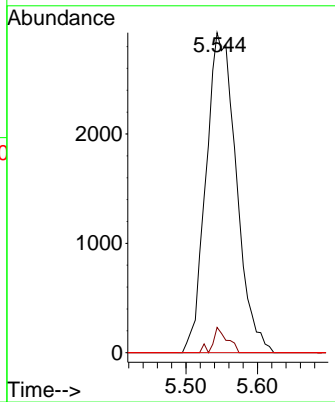
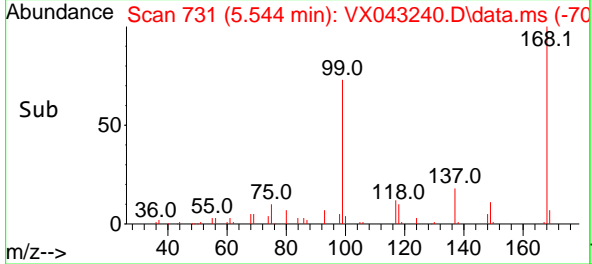
#38
 Carbon Tetrachloride
 Concen: 5.518 ug/l
 RT: 5.544 min Scan# 711
 Delta R.T. -0.128 min
 Lab File: VX043240.D
 Acq: 02 Oct 2024 18:37

Instrument : MSVOA_X
 ClientSampleId :



Tgt Ion: 117 Resp: 8597

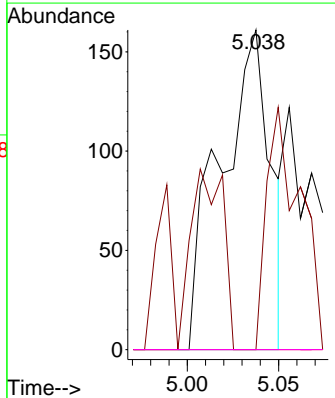
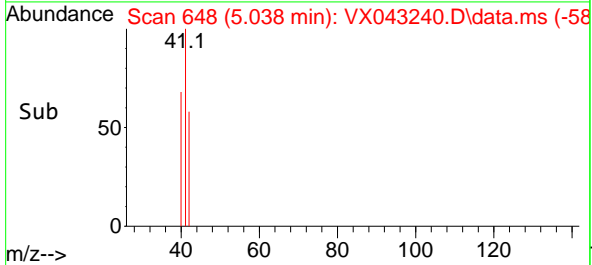
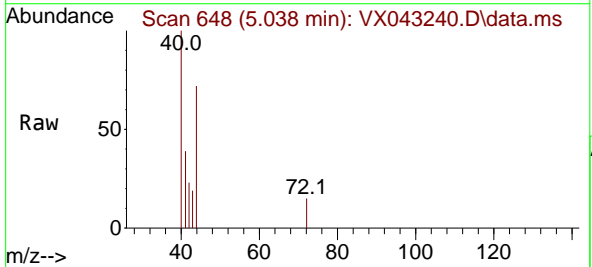
Ion	Ratio	Lower	Upper
117	100		
119	7.9	77.7	116.5#
121	0.0	24.3	36.5#

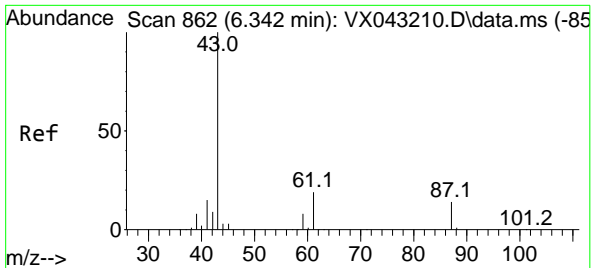


#41
 Methacrylonitrile
 Concen: 0.377 ug/l
 RT: 5.038 min Scan# 648
 Delta R.T. 0.116 min
 Lab File: VX043240.D
 Acq: 02 Oct 2024 18:37

Tgt Ion: 41 Resp: 310

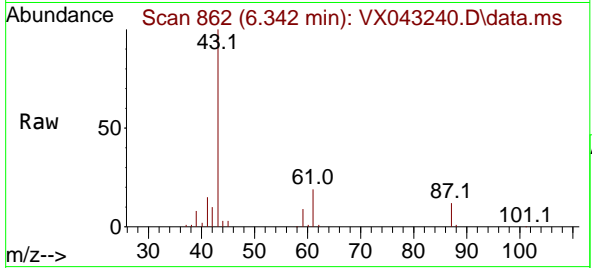
Ion	Ratio	Lower	Upper
41	100		
39	50.0	45.0	67.4
67	0.0	56.0	84.0#
52	0.0	25.6	38.4#





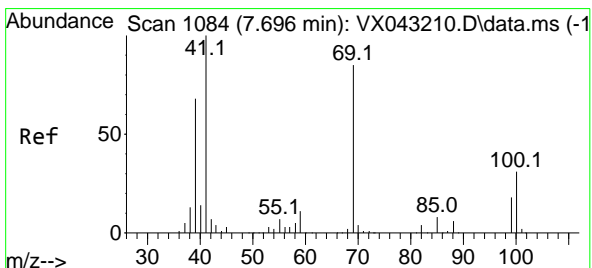
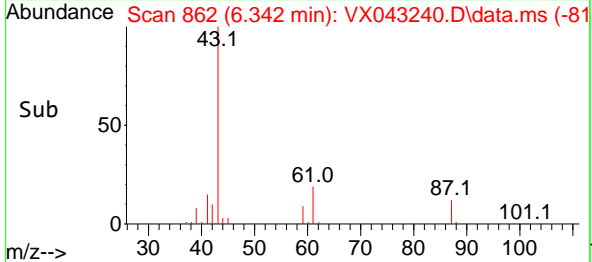
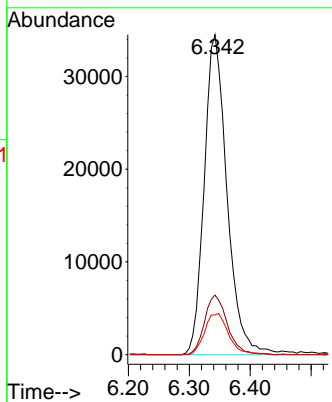
#43
 Isopropyl Acetate
 Concen: 34.348 ug/l
 RT: 6.342 min Scan# 80
 Delta R.T. -0.000 min
 Lab File: VX043240.D
 Acq: 02 Oct 2024 18:37

Instrument :
 MSVOA_X
 ClientSampleId :



Tgt Ion: 43 Resp: 89670

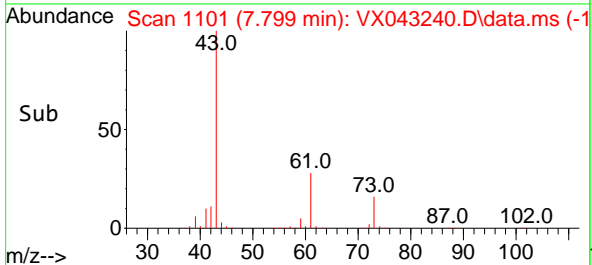
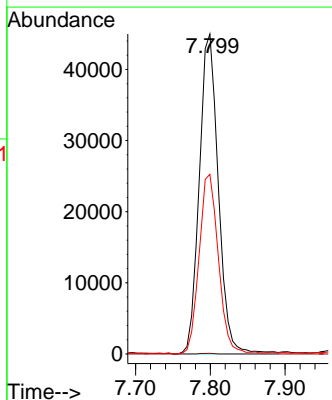
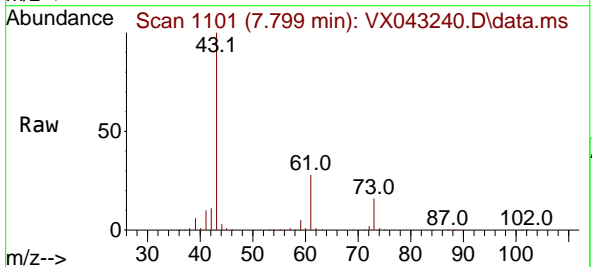
Ion	Ratio	Lower	Upper
43	100		
61	18.7	15.1	22.7
87	13.4	10.8	16.2

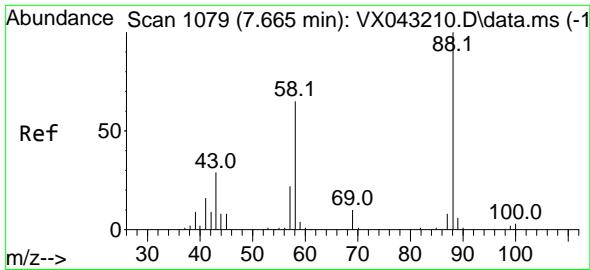


#48
 Methyl methacrylate
 Concen: 62.150 ug/l
 RT: 7.799 min Scan# 1101
 Delta R.T. 0.104 min
 Lab File: VX043240.D
 Acq: 02 Oct 2024 18:37

Tgt Ion: 41 Resp: 79611

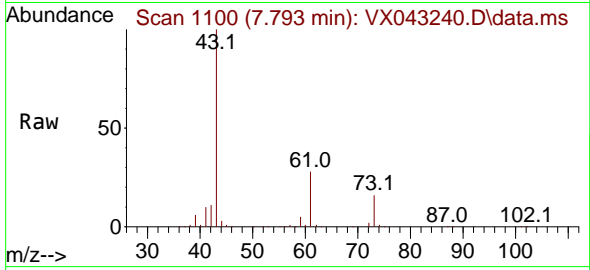
Ion	Ratio	Lower	Upper
41	100		
69	0.1	64.1	96.1#
39	56.9	52.8	79.2



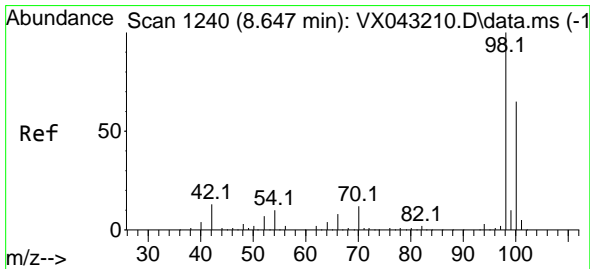
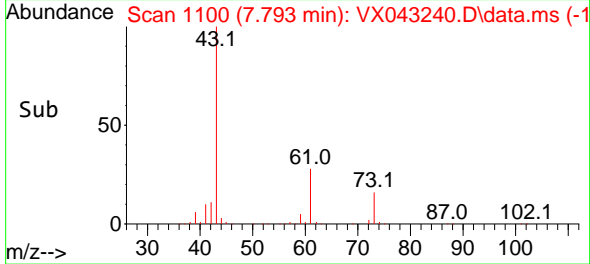
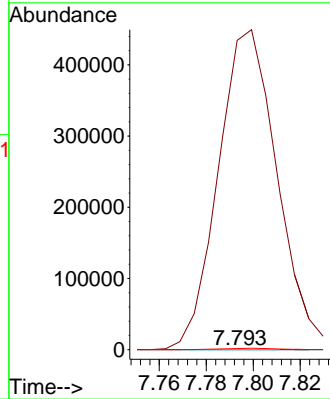


#49
 1,4-Dioxane
 Concen: 4.859 ug/l
 RT: 7.793 min Scan# 1100
 Delta R.T. 0.128 min
 Lab File: VX043240.D
 Acq: 02 Oct 2024 18:37

Instrument :
 MSVOA_X
 ClientSampleId :

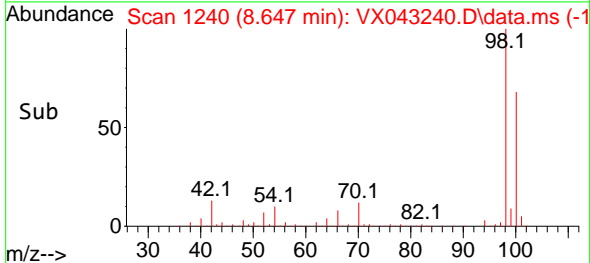
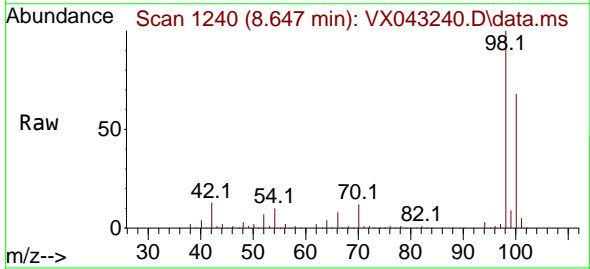
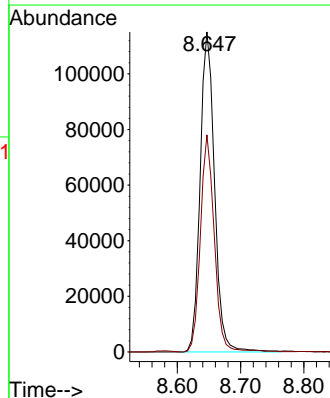


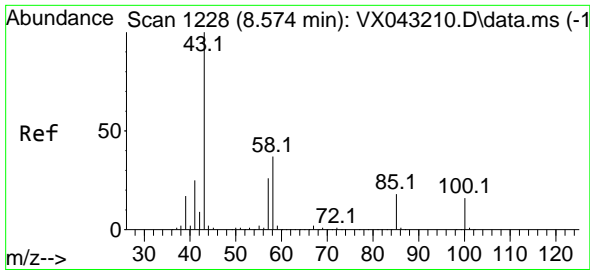
Tgt Ion: 88 Resp: 121
 Ion Ratio Lower Upper
 88 100
 43 660293.4 29.5 44.3#
 58 2696.7 55.2 82.8#



#50
 Toluene-d8
 Concen: 50.625 ug/l
 RT: 8.647 min Scan# 1240
 Delta R.T. -0.000 min
 Lab File: VX043240.D
 Acq: 02 Oct 2024 18:37

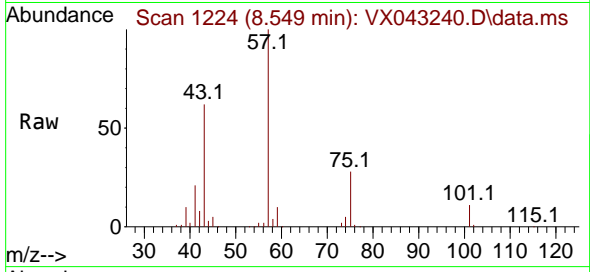
Tgt Ion: 98 Resp: 182780
 Ion Ratio Lower Upper
 98 100
 100 65.6 52.4 78.6



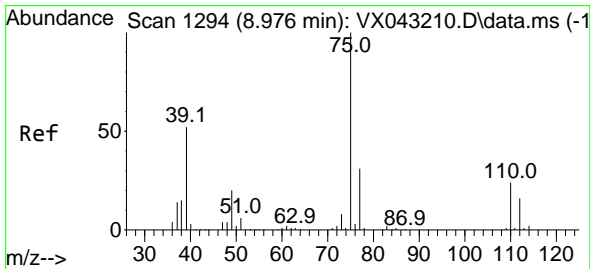
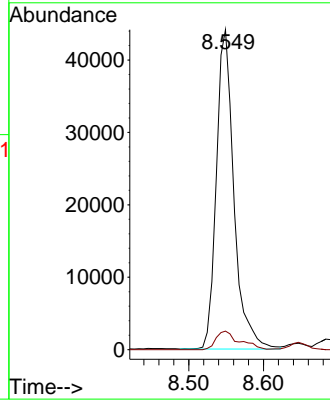
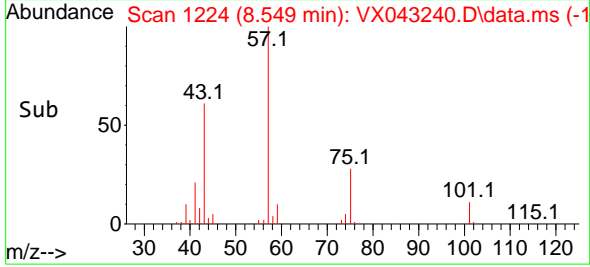


#51
 4-Methyl-2-Pentanone
 Concen: 45.614 ug/l
 RT: 8.549 min Scan# 11
 Delta R.T. -0.024 min
 Lab File: VX043240.D
 Acq: 02 Oct 2024 18:37

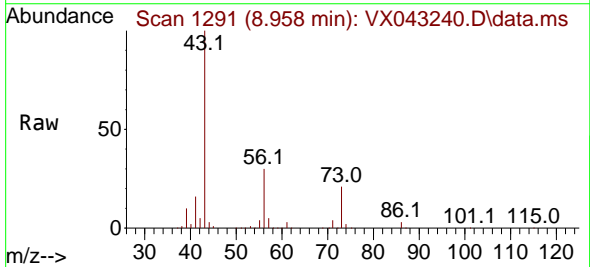
Instrument :
 MSVOA_X
 ClientSampleId :



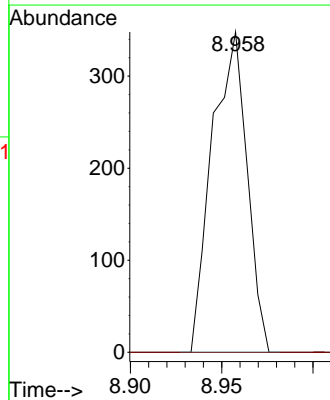
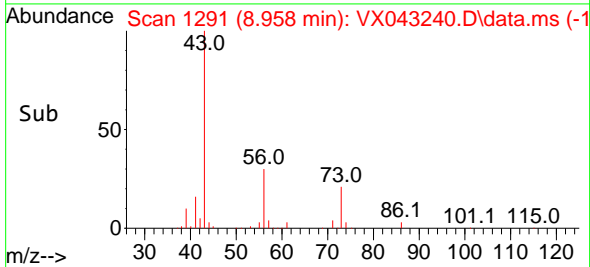
Tgt Ion: 43 Resp: 72324
 Ion Ratio Lower Upper
 43 100
 58 7.8 30.0 45.0#

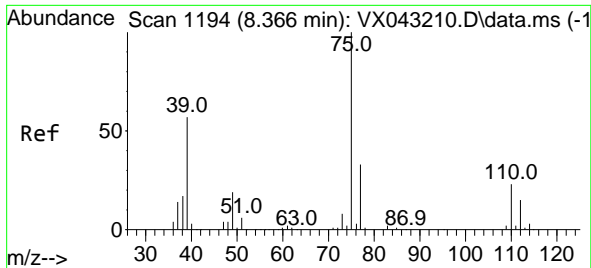


#53
 t-1,3-Dichloropropene
 Concen: 0.302 ug/l
 RT: 8.958 min Scan# 1291
 Delta R.T. -0.018 min
 Lab File: VX043240.D
 Acq: 02 Oct 2024 18:37



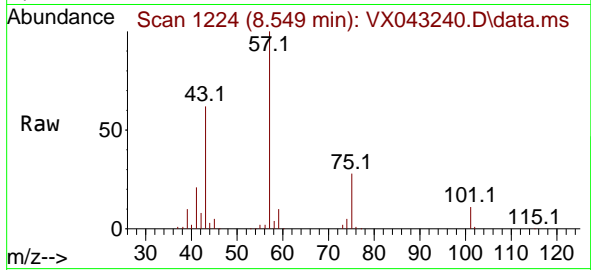
Tgt Ion: 75 Resp: 463
 Ion Ratio Lower Upper
 75 100
 77 0.0 25.1 37.7#



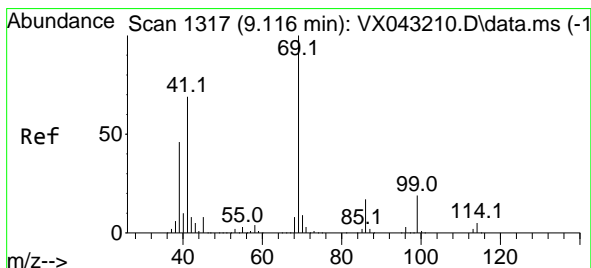
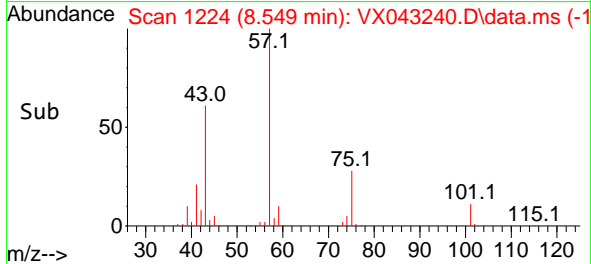
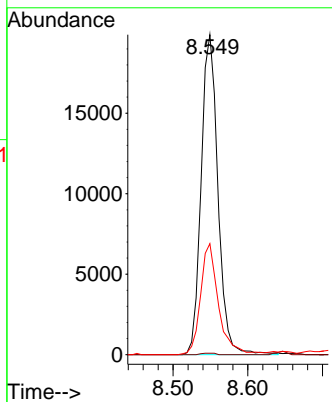


#54
 cis-1,3-Dichloropropene
 Concen: 18.854 ug/l
 RT: 8.549 min Scan# 1194
 Delta R.T. 0.183 min
 Lab File: VX043240.D
 Acq: 02 Oct 2024 18:37

Instrument :
 MSVOA_X
 ClientSampleId :

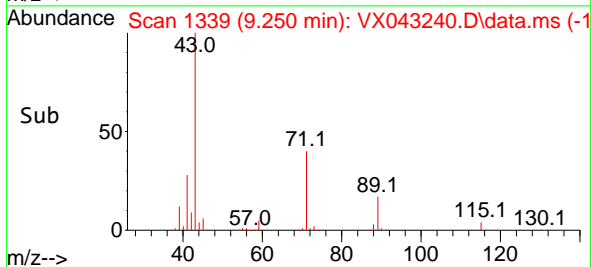
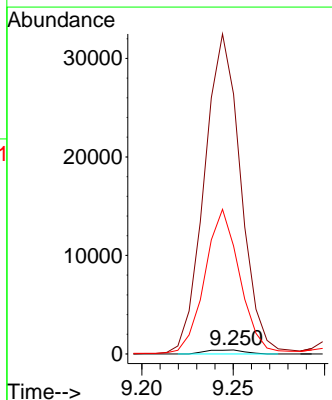
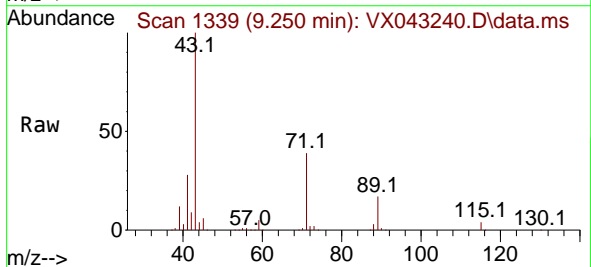


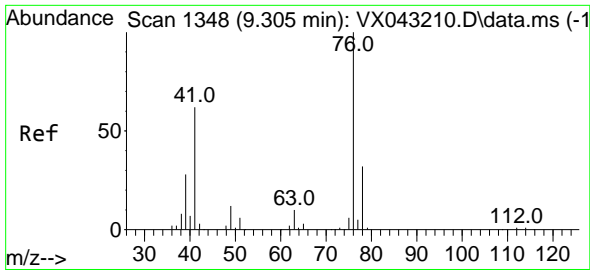
Tgt Ion: 75 Resp: 31002
 Ion Ratio Lower Upper
 75 100
 77 0.4 26.0 39.0#
 39 34.7 45.8 68.8#



#56
 Ethyl methacrylate
 Concen: 0.364 ug/l
 RT: 9.250 min Scan# 1339
 Delta R.T. 0.134 min
 Lab File: VX043240.D
 Acq: 02 Oct 2024 18:37

Tgt Ion: 69 Resp: 591
 Ion Ratio Lower Upper
 69 100
 41 7658.5 56.1 84.1#
 39 3376.0 36.4 54.6#

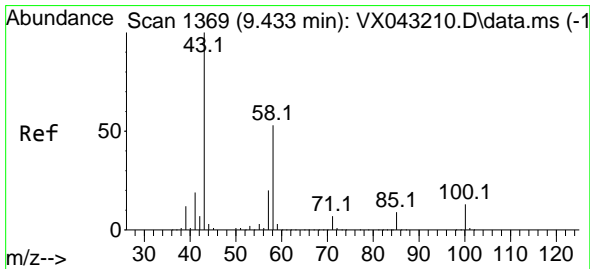
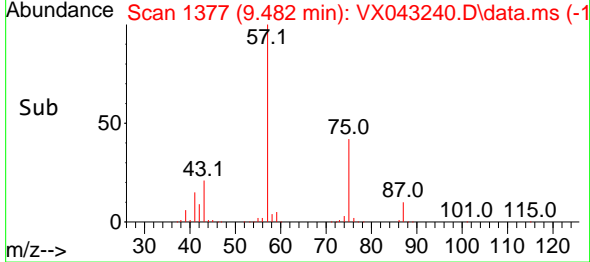
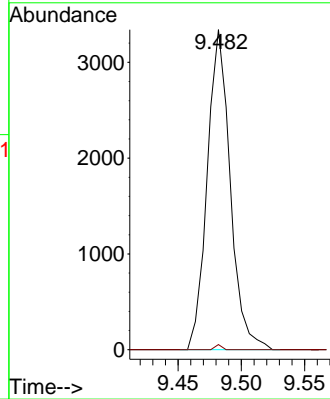
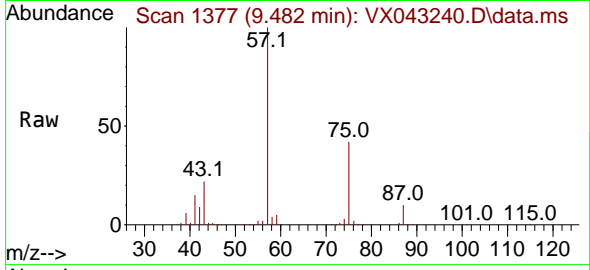




#57
 1,3-Dichloropropane
 Concen: 2.494 ug/l
 RT: 9.482 min Scan# 1377
 Delta R.T. 0.177 min
 Lab File: VX043240.D
 Acq: 02 Oct 2024 18:37

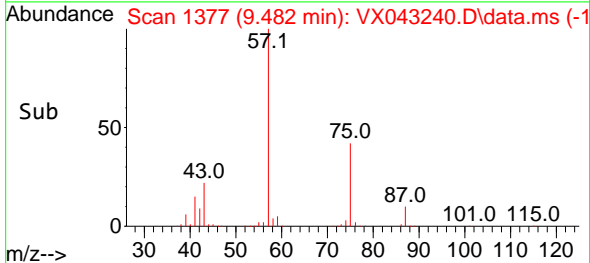
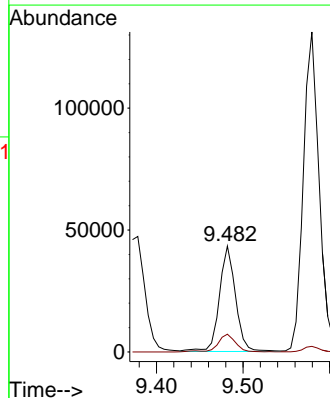
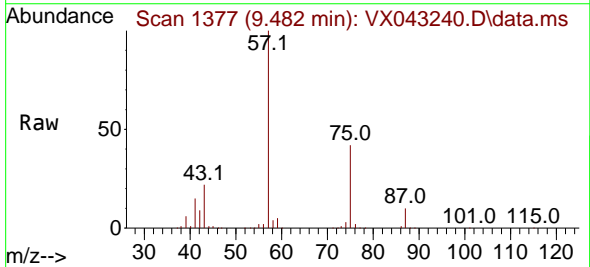
Instrument : MSVOA_X
 ClientSampleId :

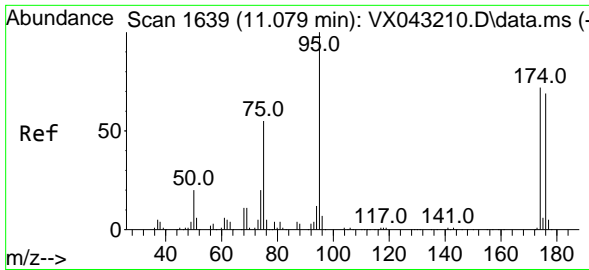
Tgt Ion: 76 Resp: 4222
 Ion Ratio Lower Upper
 76 100
 78 0.5 25.7 38.5#



#59
 2-Hexanone
 Concen: 46.837 ug/l
 RT: 9.482 min Scan# 1377
 Delta R.T. 0.049 min
 Lab File: VX043240.D
 Acq: 02 Oct 2024 18:37

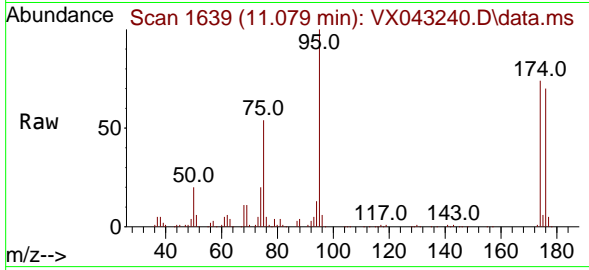
Tgt Ion: 43 Resp: 56159
 Ion Ratio Lower Upper
 43 100
 58 18.8 26.1 78.3#



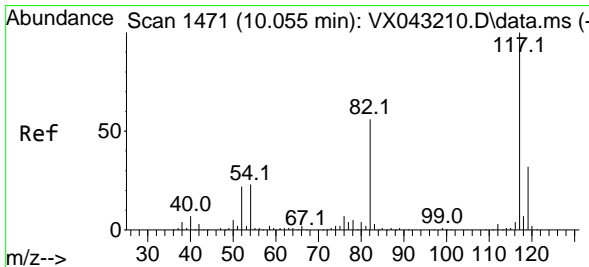
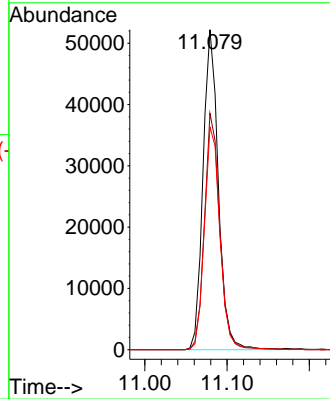
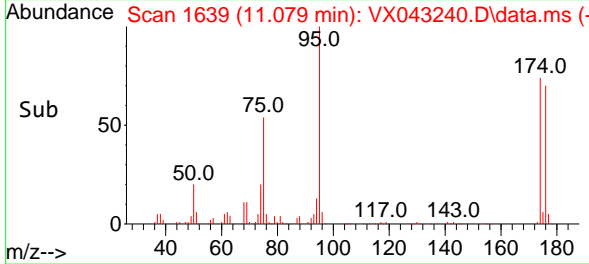


#62
 4-Bromofluorobenzene
 Concen: 51.524 ug/l
 RT: 11.079 min Scan# 1639
 Delta R.T. -0.000 min
 Lab File: VX043240.D
 Acq: 02 Oct 2024 18:37

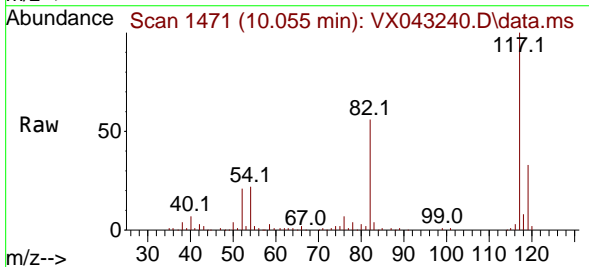
Instrument : MSVOA_X
 ClientSampleId :



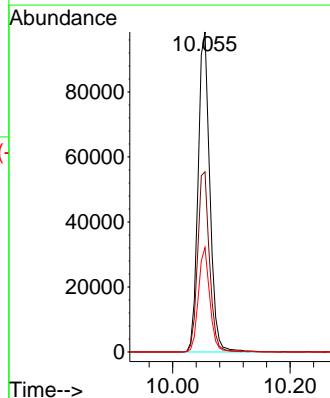
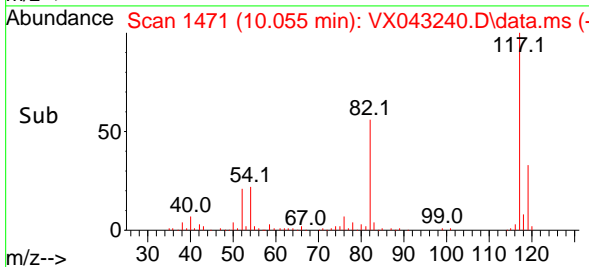
Tgt Ion: 95 Resp: 67581
 Ion Ratio Lower Upper
 95 100
 174 73.9 0.0 145.0
 176 70.8 0.0 143.0

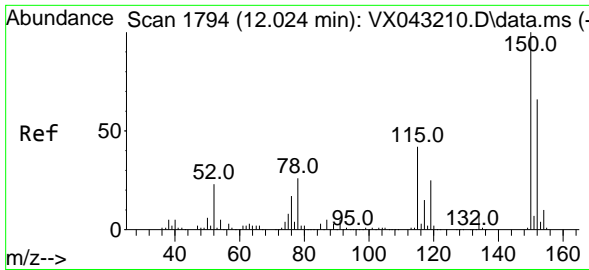


#63
 Chlorobenzene-d5
 Concen: 50.000 ug/l
 RT: 10.055 min Scan# 1471
 Delta R.T. -0.000 min
 Lab File: VX043240.D
 Acq: 02 Oct 2024 18:37



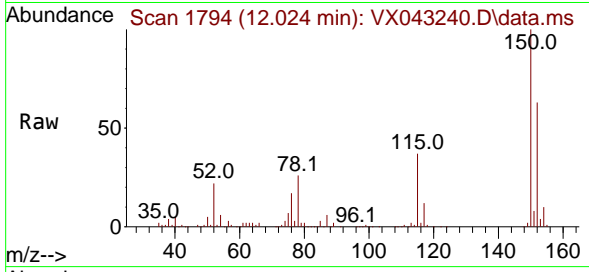
Tgt Ion: 117 Resp: 136426
 Ion Ratio Lower Upper
 117 100
 82 56.3 45.0 67.6
 119 32.7 25.3 37.9



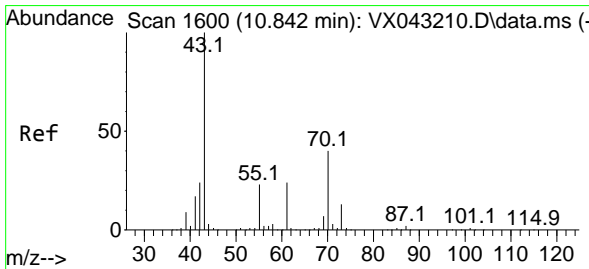
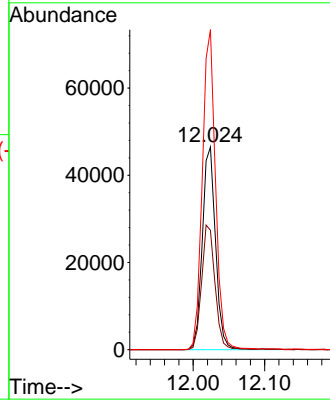
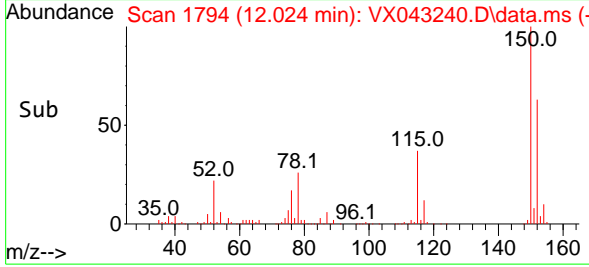


#72
 1,4-Dichlorobenzene-d4
 Concen: 50.000 ug/l
 RT: 12.024 min Scan# 11
 Delta R.T. -0.000 min
 Lab File: VX043240.D
 Acq: 02 Oct 2024 18:37

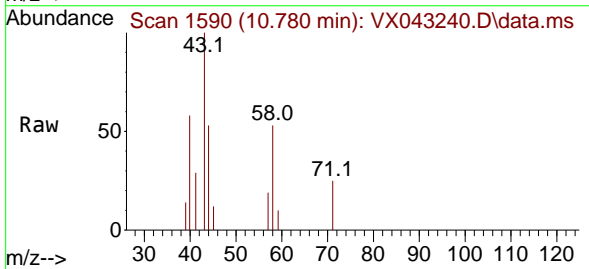
Instrument :
 MSVOA_X
 ClientSampleId :



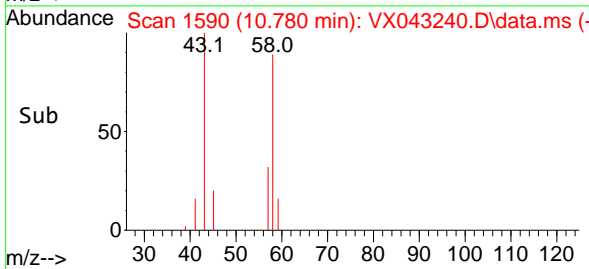
Tgt Ion:152 Resp: 59897
 Ion Ratio Lower Upper
 152 100
 115 62.1 44.1 132.3
 150 156.5 0.0 347.4

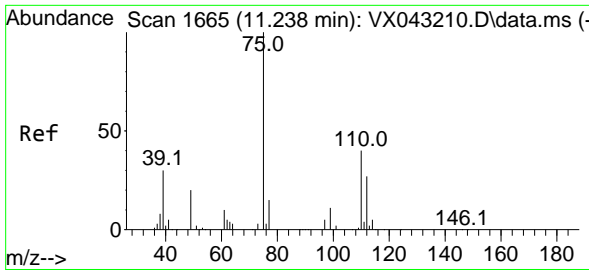


#74
 N-amy1 acetate
 Concen: 0.337 ug/l
 RT: 10.780 min Scan# 1590
 Delta R.T. -0.061 min
 Lab File: VX043240.D
 Acq: 02 Oct 2024 18:37



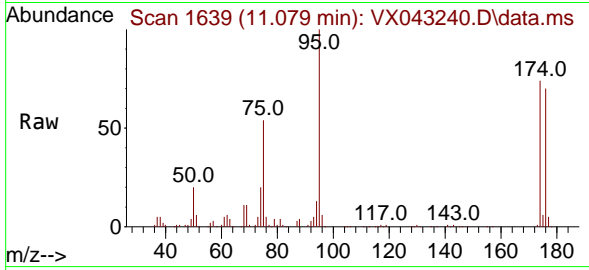
Tgt Ion: 43 Resp: 744
 Ion Ratio Lower Upper
 43 100
 70 0.0 33.1 49.7#
 55 0.0 18.6 27.8#
 61 0.0 18.7 28.1#



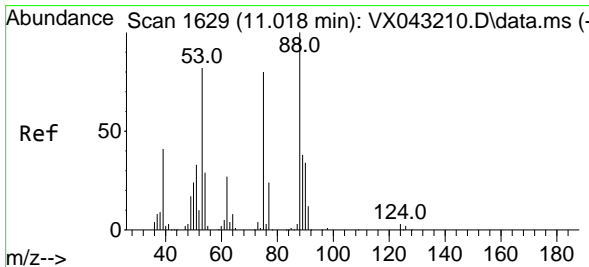
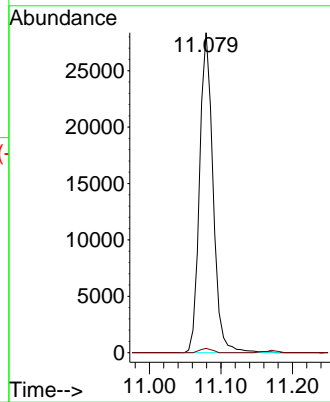
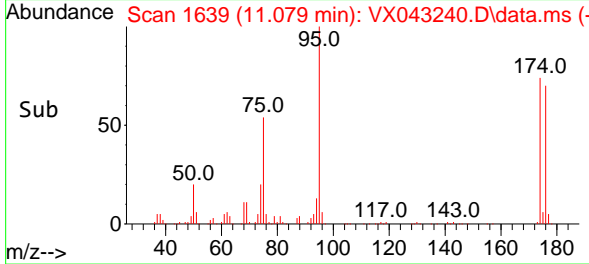


#76
 1,2,3-Trichloropropane
 Concen: 27.935 ug/l
 RT: 11.079 min Scan# 1639
 Delta R.T. -0.159 min
 Lab File: VX043240.D
 Acq: 02 Oct 2024 18:37

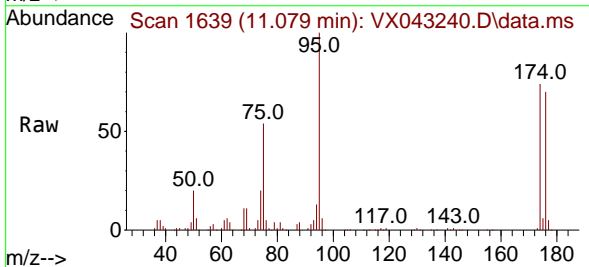
Instrument : MSVOA_X
 ClientSampleId :



Tgt Ion: 75 Resp: 37114
 Ion Ratio Lower Upper
 75 100
 77 1.2 22.0 66.0#



#81
 trans-1,4-Dichloro-2-butene
 Concen: 72.398 ug/l
 RT: 11.079 min Scan# 1639
 Delta R.T. 0.061 min
 Lab File: VX043240.D
 Acq: 02 Oct 2024 18:37



Tgt Ion: 75 Resp: 37114
 Ion Ratio Lower Upper
 75 100
 53 0.0 83.9 125.9#
 89 0.0 38.6 58.0#

