

Data Path : Z:\voasrv\HPCHEM1\MSVOA_X\Data\VX100225\
 Data File : VX047957.D
 Acq On : 02 Oct 2025 11:24
 Operator : JC/MD
 Sample : Q3246-02
 Misc : 5.0mL/MSVOA_X/WATER
 ALS Vial : 6 Sample Multiplier: 1

Instrument :
 MSVOA_X
 ClientSampleId :
 BP-VPB-184-GW-460-462

Quant Time: Oct 03 03:27:12 2025
 Quant Method : Z:\voasrv\HPCHEM1\MSVOA_X\Method\82X091625W.M
 Quant Title : SW846 8260
 QLast Update : Wed Sep 17 06:39:58 2025
 Response via : Initial Calibration

Compound	R.T.	QIon	Response	Conc	Units	Dev(Min)

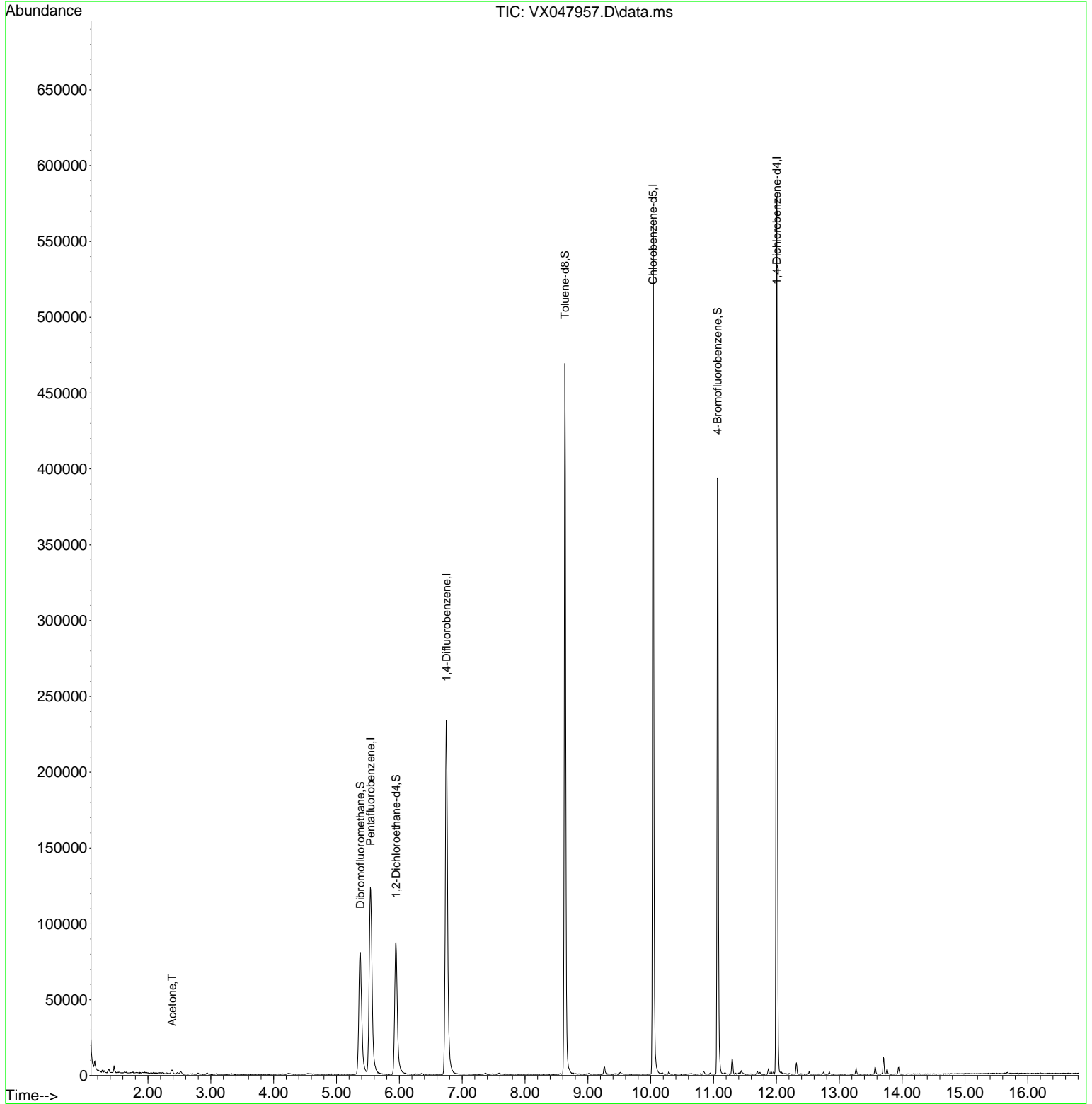
Internal Standards						
1) Pentafluorobenzene	5.544	168	127914	50.000	ug/l	0.00
34) 1,4-Difluorobenzene	6.751	114	256538	50.000	ug/l	0.00
63) Chlorobenzene-d5	10.037	117	255834	50.000	ug/l	0.00
72) 1,4-Dichlorobenzene-d4	12.006	152	122681	50.000	ug/l	0.00
System Monitoring Compounds						
33) 1,2-Dichloroethane-d4	5.946	65	95997	47.148	ug/l	0.00
Spiked Amount	50.000	Range	78 - 117	Recovery	=	94.300%
35) Dibromofluoromethane	5.379	113	81995	47.658	ug/l	0.00
Spiked Amount	50.000	Range	75 - 124	Recovery	=	95.320%
50) Toluene-d8	8.635	98	282326	47.424	ug/l	0.00
Spiked Amount	50.000	Range	92 - 112	Recovery	=	94.840%
62) 4-Bromofluorobenzene	11.061	95	116514	51.570	ug/l	0.00
Spiked Amount	50.000	Range	83 - 123	Recovery	=	103.140%
Target Compounds						
16) Acetone	2.386	43	4455	5.032	ug/l	91

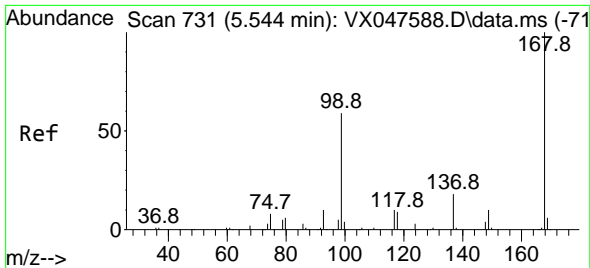
(#) = qualifier out of range (m) = manual integration (+) = signals summed

Data Path : Z:\voasrv\HPCHEM1\MSVOA_X\Data\VX100225\
 Data File : VX047957.D
 Acq On : 02 Oct 2025 11:24
 Operator : JC/MD
 Sample : Q3246-02
 Misc : 5.0mL/MSVOA_X/WATER
 ALS Vial : 6 Sample Multiplier: 1

Instrument :
 MSVOA_X
 ClientSampleId :
 BP-VPB-184-GW-460-462

Quant Time: Oct 03 03:27:12 2025
 Quant Method : Z:\voasrv\HPCHEM1\MSVOA_X\Method\82X091625W.M
 Quant Title : SW846 8260
 QLast Update : Wed Sep 17 06:39:58 2025
 Response via : Initial Calibration

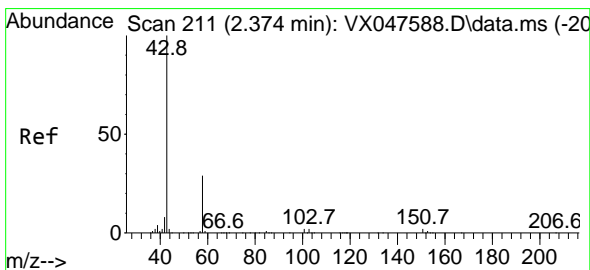
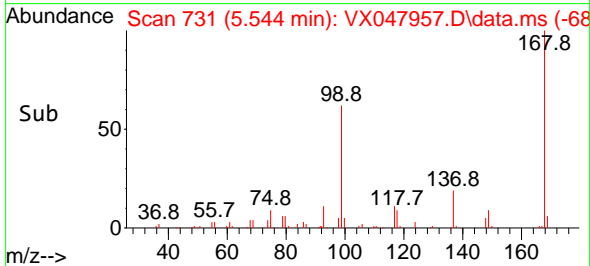
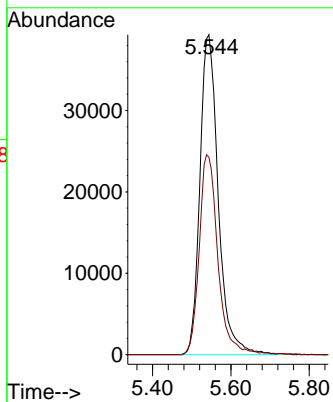
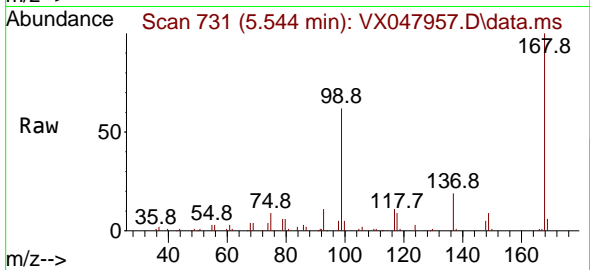




#1
 Pentafluorobenzene
 Concen: 50.000 ug/l
 RT: 5.544 min Scan# 71
 Delta R.T. -0.000 min
 Lab File: VX047957.D
 Acq: 02 Oct 2025 11:24

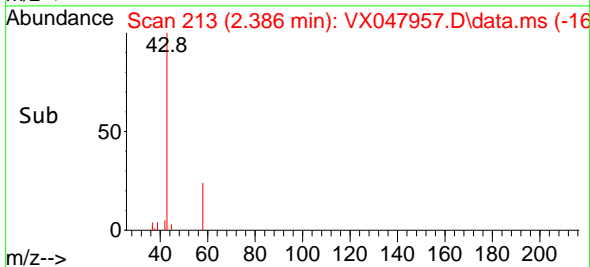
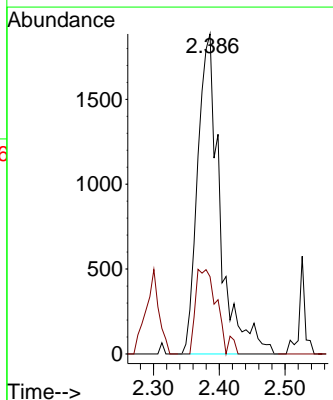
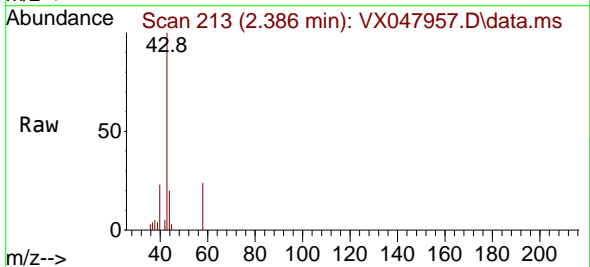
Instrument : MSVOA_X
 ClientSampleId : BP-VPB-184-GW-460-462

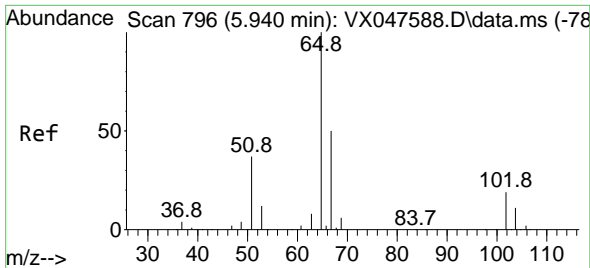
Tgt Ion:168 Resp: 127914
 Ion Ratio Lower Upper
 168 100
 99 61.7 48.8 73.2



#16
 Acetone
 Concen: 5.032 ug/l
 RT: 2.386 min Scan# 213
 Delta R.T. 0.012 min
 Lab File: VX047957.D
 Acq: 02 Oct 2025 11:24

Tgt Ion: 43 Resp: 4455
 Ion Ratio Lower Upper
 43 100
 58 24.1 23.4 35.0

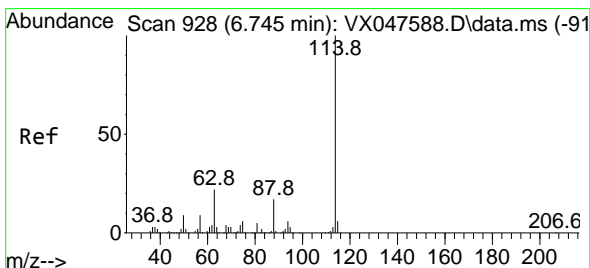
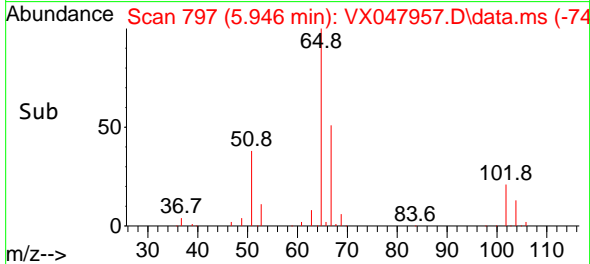
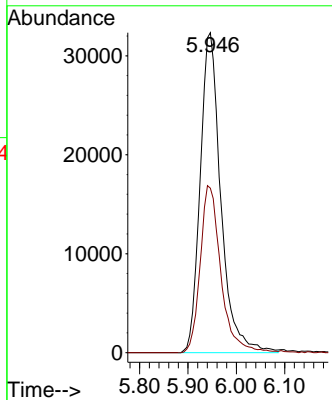
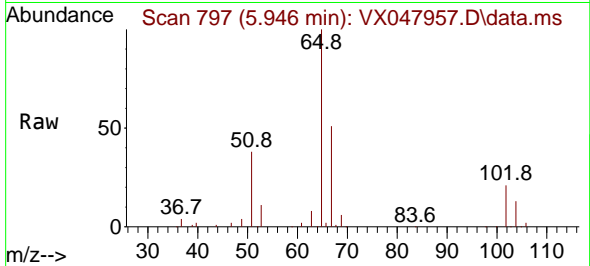




#33
 1,2-Dichloroethane-d4
 Concen: 47.148 ug/l
 RT: 5.946 min Scan# 796
 Delta R.T. 0.006 min
 Lab File: VX047957.D
 Acq: 02 Oct 2025 11:24

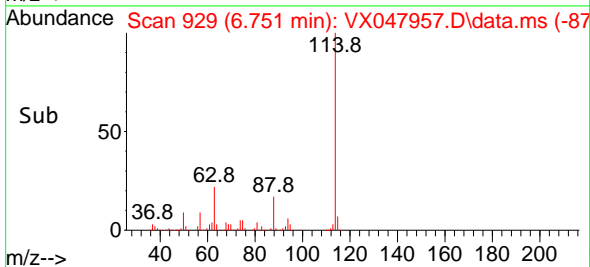
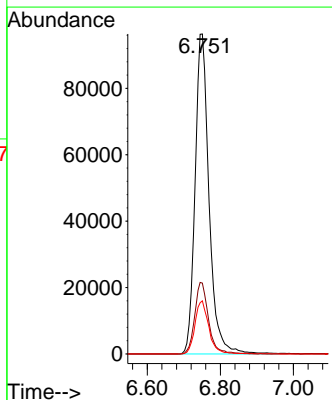
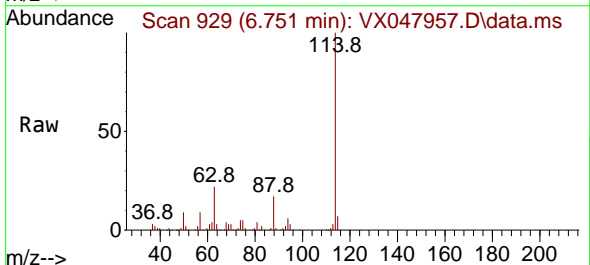
Instrument : MSVOA_X
 ClientSampleId : BP-VPB-184-GW-460-462

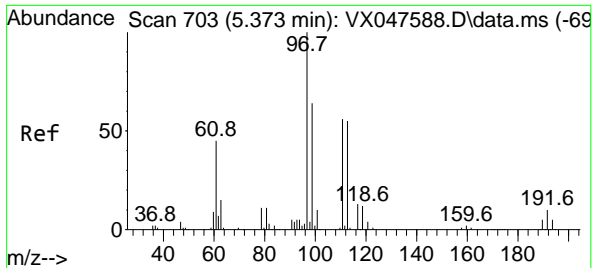
Tgt Ion: 65 Resp: 95997
 Ion Ratio Lower Upper
 65 100
 67 52.0 0.0 103.0



#34
 1,4-Difluorobenzene
 Concen: 50.000 ug/l
 RT: 6.751 min Scan# 929
 Delta R.T. 0.006 min
 Lab File: VX047957.D
 Acq: 02 Oct 2025 11:24

Tgt Ion:114 Resp: 256538
 Ion Ratio Lower Upper
 114 100
 63 22.1 0.0 44.0
 88 16.6 0.0 34.2

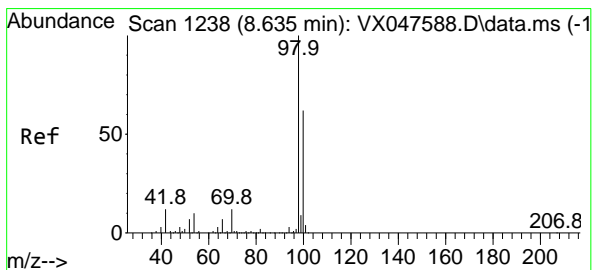
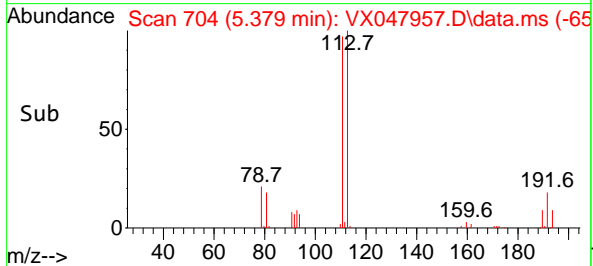
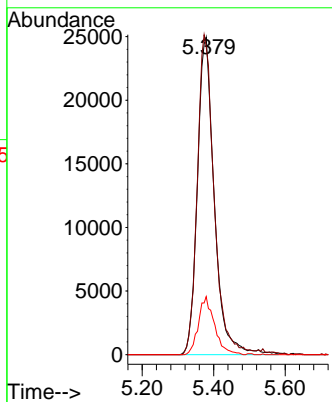
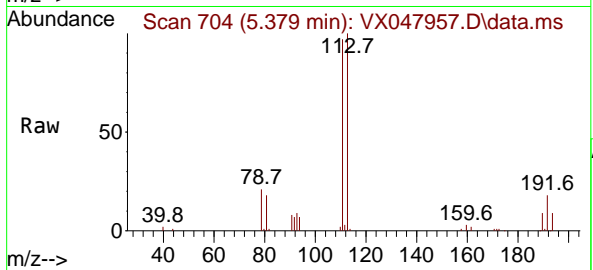




#35
 Dibromofluoromethane
 Concen: 47.658 ug/l
 RT: 5.379 min Scan# 704
 Delta R.T. 0.006 min
 Lab File: VX047957.D
 Acq: 02 Oct 2025 11:24

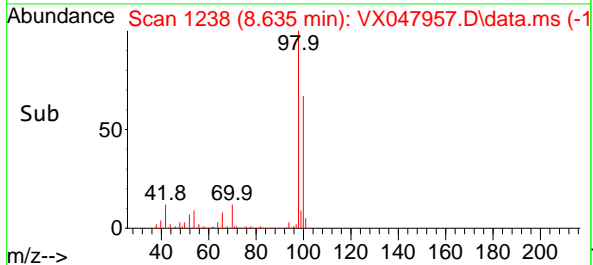
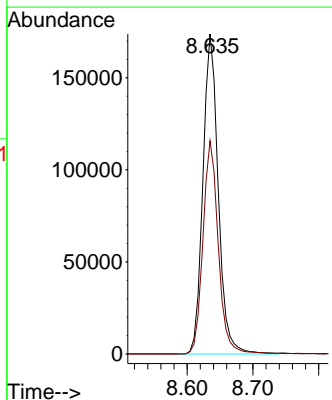
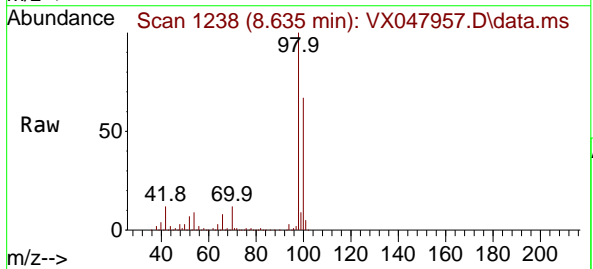
Instrument : MSVOA_X
 ClientSampleId : BP-VPB-184-GW-460-462

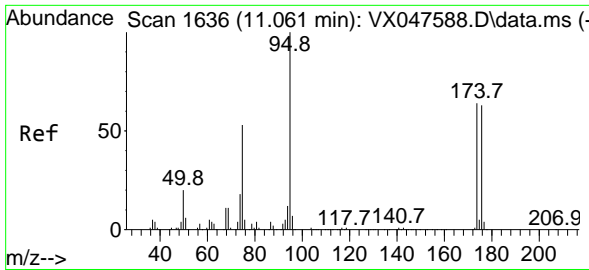
Tgt Ion: 113 Resp: 81995
 Ion Ratio Lower Upper
 113 100
 111 100.1 80.9 121.3
 192 17.4 14.2 21.4



#50
 Toluene-d8
 Concen: 47.424 ug/l
 RT: 8.635 min Scan# 1238
 Delta R.T. 0.000 min
 Lab File: VX047957.D
 Acq: 02 Oct 2025 11:24

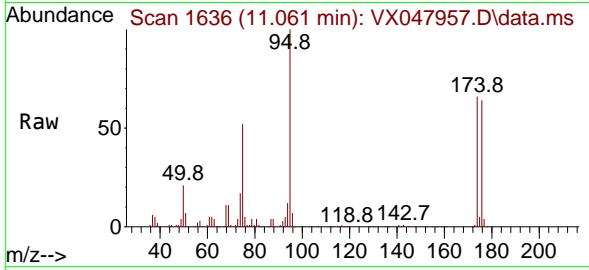
Tgt Ion: 98 Resp: 282326
 Ion Ratio Lower Upper
 98 100
 100 66.7 53.0 79.4



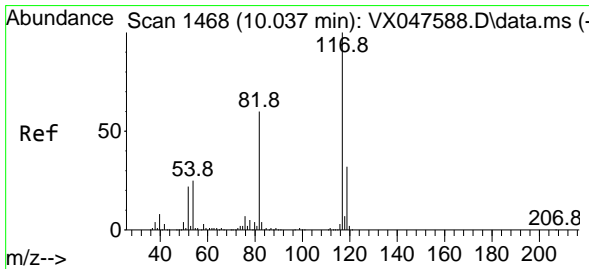
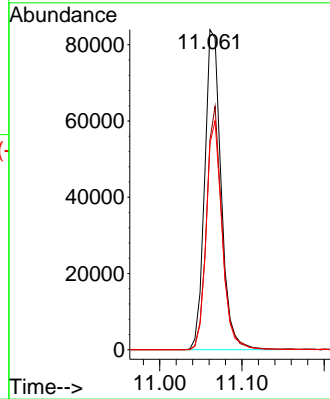
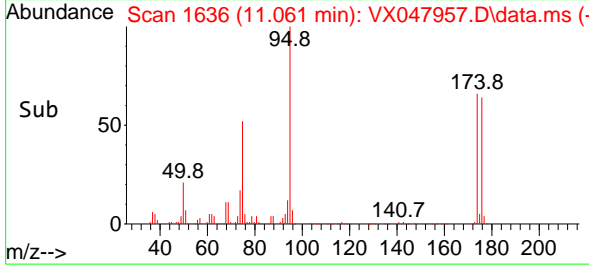


#62
 4-Bromofluorobenzene
 Concen: 51.570 ug/l
 RT: 11.061 min Scan# 11
 Delta R.T. 0.000 min
 Lab File: VX047957.D
 Acq: 02 Oct 2025 11:24

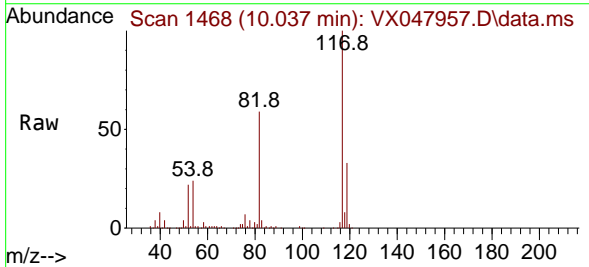
Instrument :
 MSVOA_X
 ClientSampleId :
 BP-VPB-184-GW-460-462



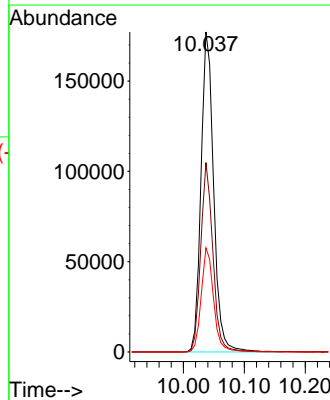
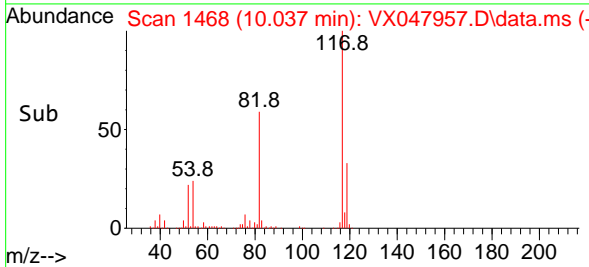
Tgt Ion: 95 Resp: 116514
 Ion Ratio Lower Upper
 95 100
 174 71.9 0.0 141.6
 176 69.1 0.0 138.4

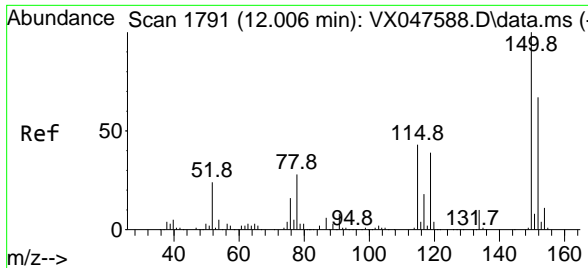


#63
 Chlorobenzene-d5
 Concen: 50.000 ug/l
 RT: 10.037 min Scan# 1468
 Delta R.T. 0.000 min
 Lab File: VX047957.D
 Acq: 02 Oct 2025 11:24



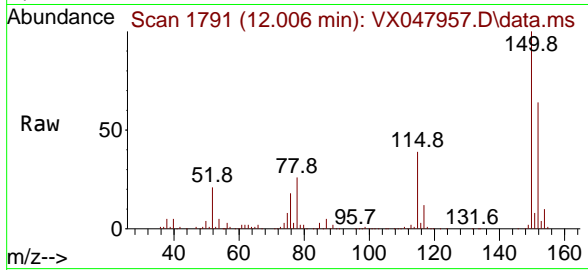
Tgt Ion: 117 Resp: 255834
 Ion Ratio Lower Upper
 117 100
 82 59.2 47.8 71.6
 119 32.5 25.2 37.8





#72
 1,4-Dichlorobenzene-d4
 Concen: 50.000 ug/l
 RT: 12.006 min Scan# 1
 Delta R.T. 0.000 min
 Lab File: VX047957.D
 Acq: 02 Oct 2025 11:24

Instrument :
 MSVOA_X
 ClientSampleId :
 BP-VPB-184-GW-460-462



Tgt Ion:152 Resp: 122681

Ion	Ratio	Lower	Upper
152	100		
115	63.1	44.9	134.5
150	159.7	0.0	352.0

