

Data Path : Z:\voasrv\HPCHEM1\MSVOA_X\Data\VX100225\
 Data File : VX047969.D
 Acq On : 02 Oct 2025 15:31
 Operator : JC/MD
 Sample : Q3194-09
 Misc : 5.0mL/MSVOA_X/WATER
 ALS Vial : 18 Sample Multiplier: 1

Instrument :
 MSVOA_X
 ClientSampleId :
 TT192D2-20250922

Quant Time: Oct 03 03:32:15 2025
 Quant Method : Z:\voasrv\HPCHEM1\MSVOA_X\Method\82X091625W.M
 Quant Title : SW846 8260
 QLast Update : Wed Sep 17 06:39:58 2025
 Response via : Initial Calibration

Compound	R.T.	QIon	Response	Conc	Units	Dev(Min)

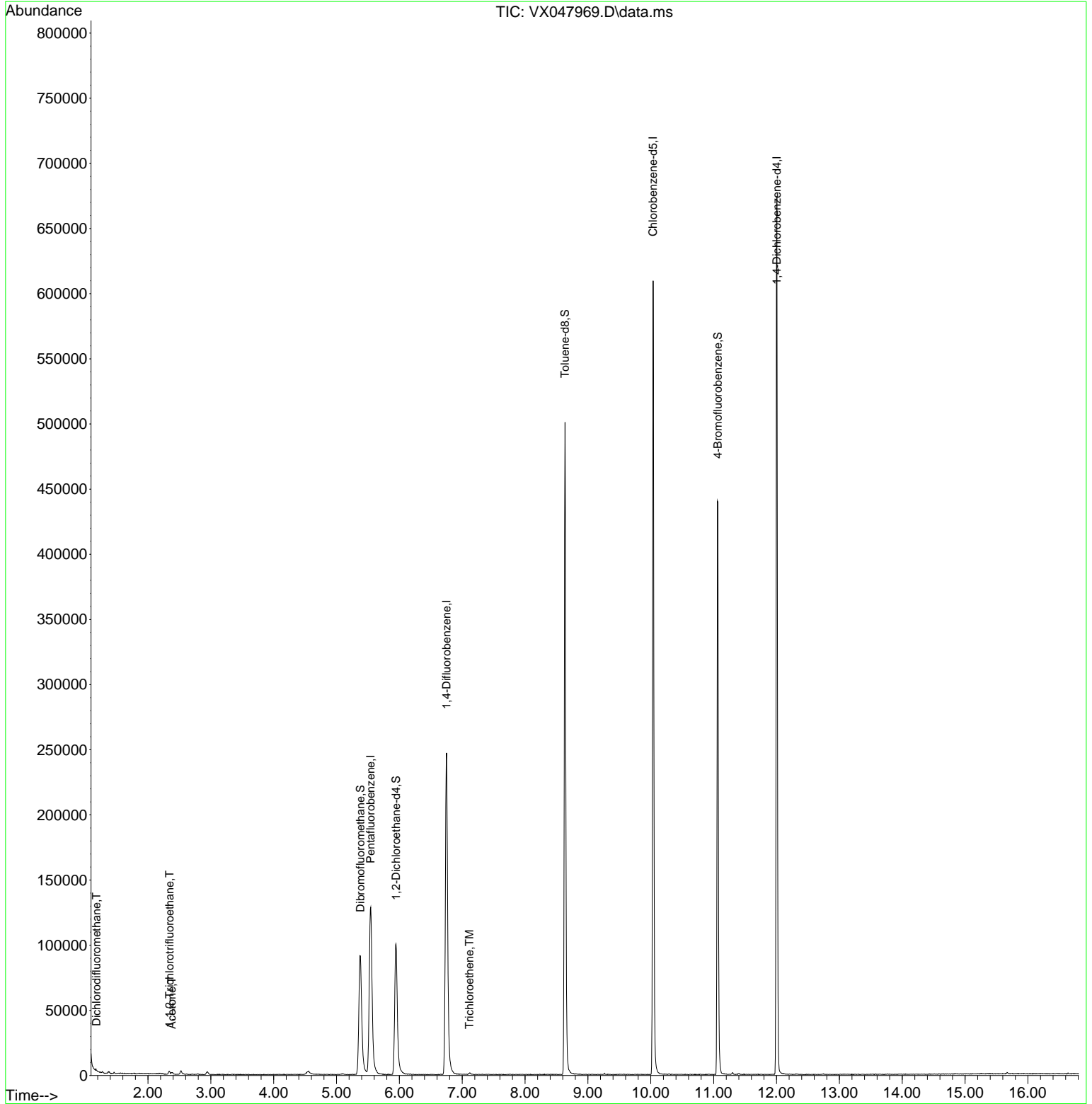
Internal Standards						
1) Pentafluorobenzene	5.544	168	129319	50.000	ug/l	0.00
34) 1,4-Difluorobenzene	6.751	114	268695	50.000	ug/l	0.00
63) Chlorobenzene-d5	10.037	117	276743	50.000	ug/l	0.00
72) 1,4-Dichlorobenzene-d4	12.006	152	140515	50.000	ug/l	0.00
System Monitoring Compounds						
33) 1,2-Dichloroethane-d4	5.946	65	110633	53.746	ug/l	0.00
Spiked Amount	50.000	Range	78 - 117	Recovery	=	107.500%
35) Dibromofluoromethane	5.379	113	90598	50.276	ug/l	0.00
Spiked Amount	50.000	Range	75 - 124	Recovery	=	100.560%
50) Toluene-d8	8.635	98	304329	48.807	ug/l	0.00
Spiked Amount	50.000	Range	92 - 112	Recovery	=	97.620%
62) 4-Bromofluorobenzene	11.067	95	132376	55.939	ug/l	0.00
Spiked Amount	50.000	Range	83 - 123	Recovery	=	111.880%
Target Compounds						
					Qvalue	
2) Dichlorodifluoromethane	1.179	85	383	0.286	ug/l	97
9) 1,1,2-Trichlorotrifluo...	2.343	101	843	0.564	ug/l #	82
16) Acetone	2.380	43	2169	2.423	ug/l	95
44) Trichloroethene	7.117	130	529	0.274	ug/l	69

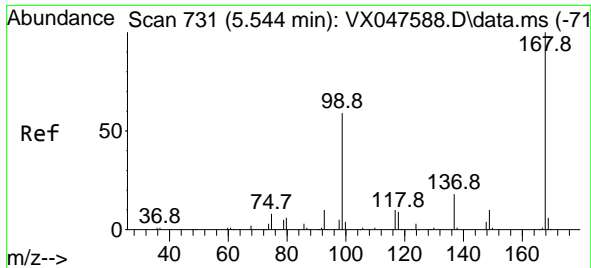
(#) = qualifier out of range (m) = manual integration (+) = signals summed

Data Path : Z:\voasrv\HPCHEM1\MSVOA_X\Data\VX100225\
 Data File : VX047969.D
 Acq On : 02 Oct 2025 15:31
 Operator : JC/MD
 Sample : Q3194-09
 Misc : 5.0mL/MSVOA_X/WATER
 ALS Vial : 18 Sample Multiplier: 1

Instrument :
 MSVOA_X
 ClientSampleId :
 TT192D2-20250922

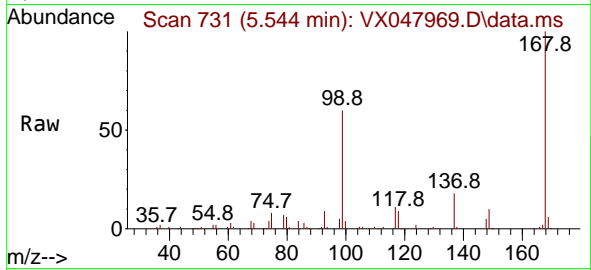
Quant Time: Oct 03 03:32:15 2025
 Quant Method : Z:\voasrv\HPCHEM1\MSVOA_X\Method\82X091625W.M
 Quant Title : SW846 8260
 QLast Update : Wed Sep 17 06:39:58 2025
 Response via : Initial Calibration



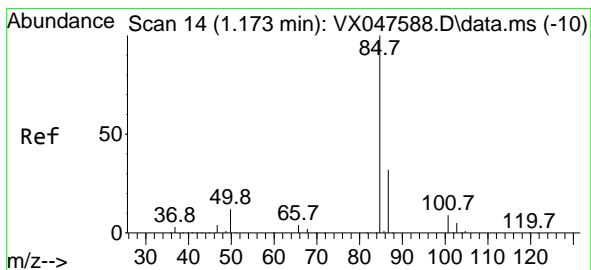
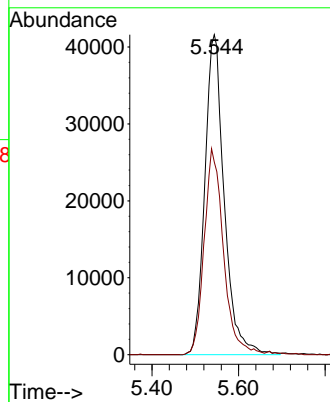
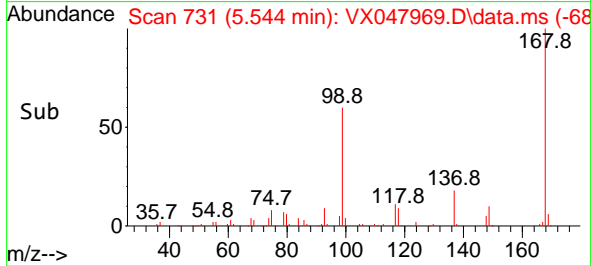


#1
 Pentafluorobenzene
 Concen: 50.000 ug/l
 RT: 5.544 min Scan# 71
 Delta R.T. -0.000 min
 Lab File: VX047969.D
 Acq: 02 Oct 2025 15:31

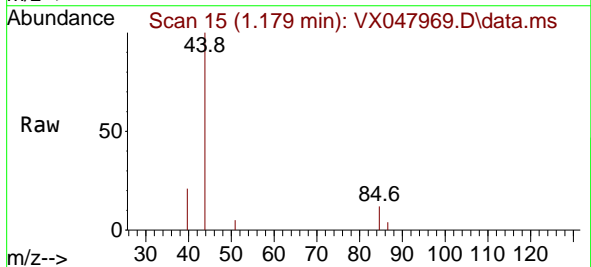
Instrument : MSVOA_X
 ClientSampleId : TT192D2-20250922



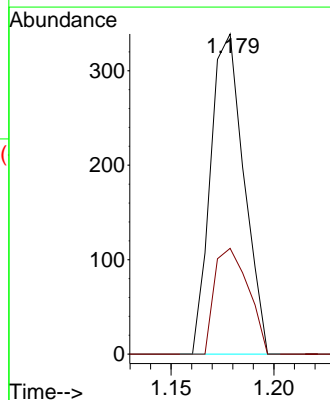
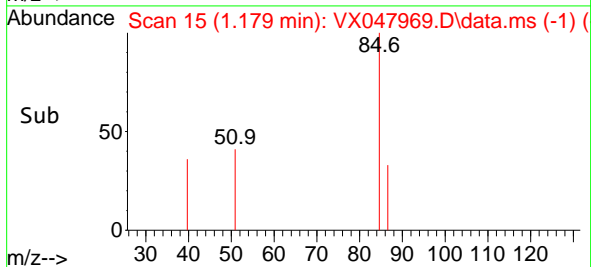
Tgt Ion:168 Resp: 129319
 Ion Ratio Lower Upper
 168 100
 99 60.2 48.8 73.2

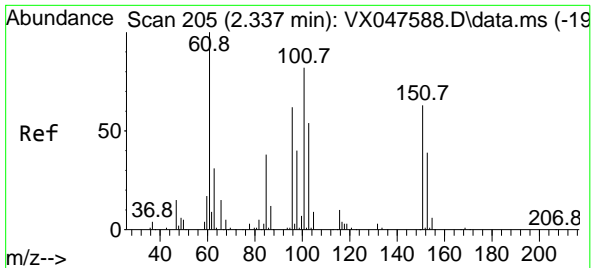


#2
 Dichlorodifluoromethane
 Concen: 0.286 ug/l
 RT: 1.179 min Scan# 15
 Delta R.T. 0.006 min
 Lab File: VX047969.D
 Acq: 02 Oct 2025 15:31



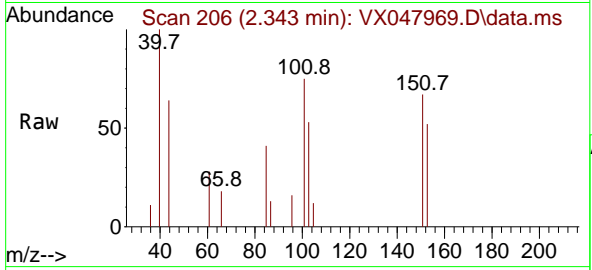
Tgt Ion: 85 Resp: 383
 Ion Ratio Lower Upper
 85 100
 87 33.0 15.8 47.3





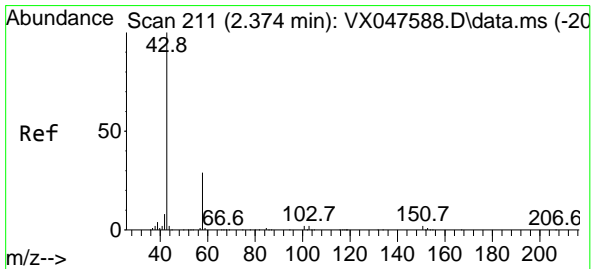
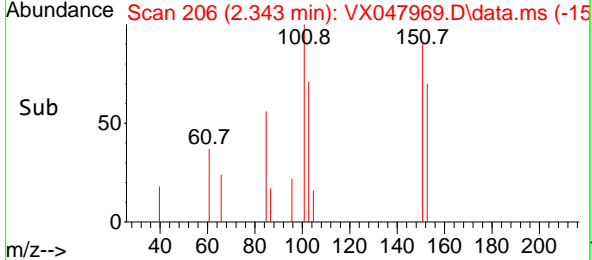
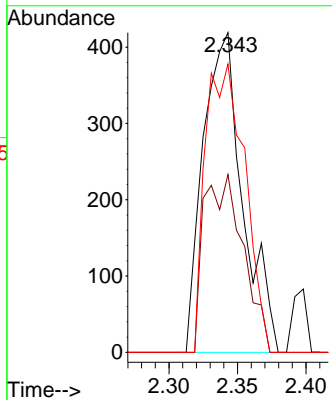
#9
 1,1,2-Trichlorotrifluoroethane
 Concen: 0.564 ug/l
 RT: 2.343 min Scan# 20
 Delta R.T. 0.006 min
 Lab File: VX047969.D
 Acq: 02 Oct 2025 15:31

Instrument :
 MSVOA_X
 ClientSampleId :
 TT192D2-20250922



Tgt Ion: 101 Resp: 843

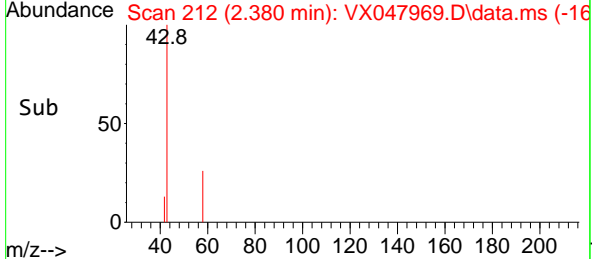
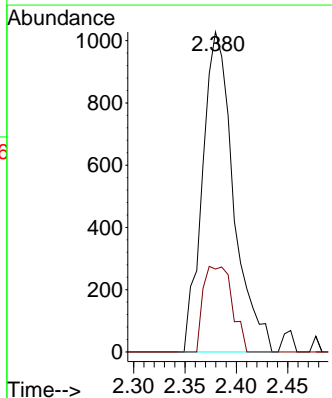
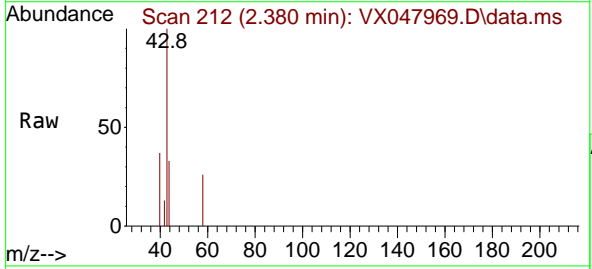
Ion	Ratio	Lower	Upper
101	100		
85	54.9	35.5	53.3#
151	89.8	59.4	89.0#

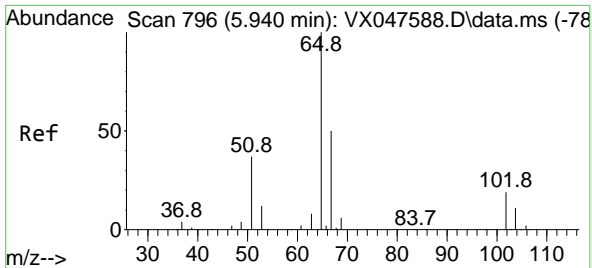


#16
 Acetone
 Concen: 2.423 ug/l
 RT: 2.380 min Scan# 212
 Delta R.T. 0.006 min
 Lab File: VX047969.D
 Acq: 02 Oct 2025 15:31

Tgt Ion: 43 Resp: 2169

Ion	Ratio	Lower	Upper
43	100		
58	26.4	23.4	35.0

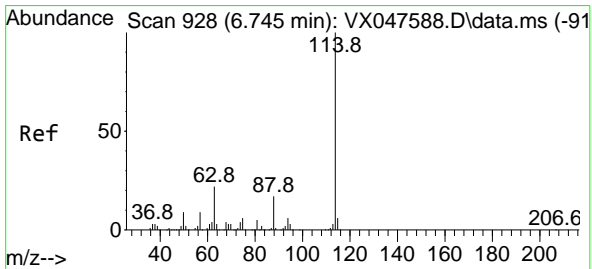
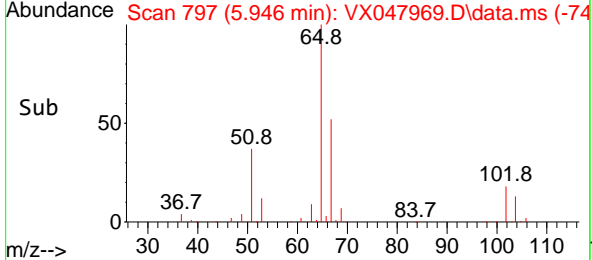
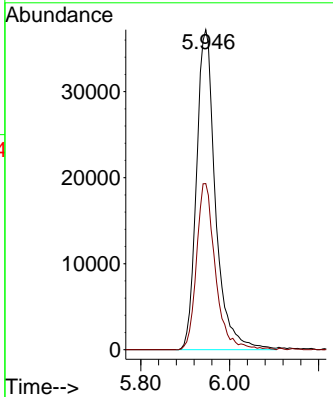
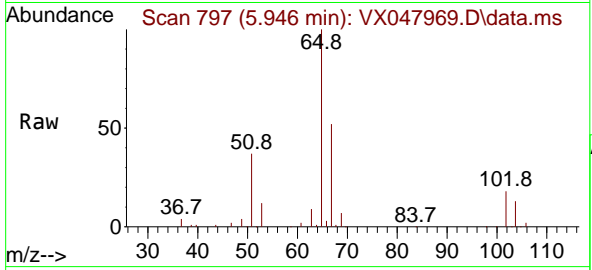




#33
 1,2-Dichloroethane-d4
 Concen: 53.746 ug/l
 RT: 5.946 min Scan# 796
 Delta R.T. 0.006 min
 Lab File: VX047969.D
 Acq: 02 Oct 2025 15:31

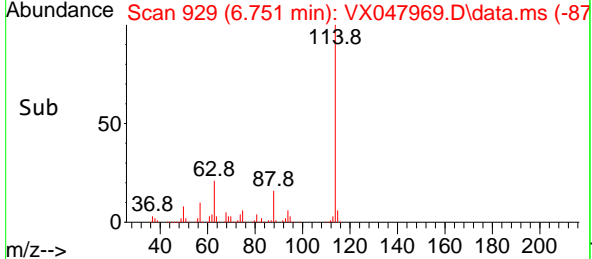
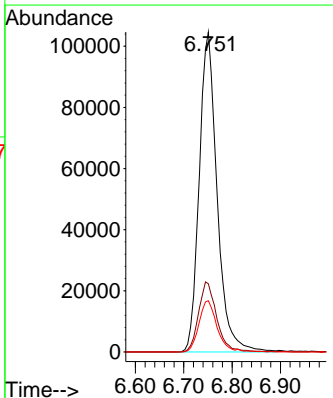
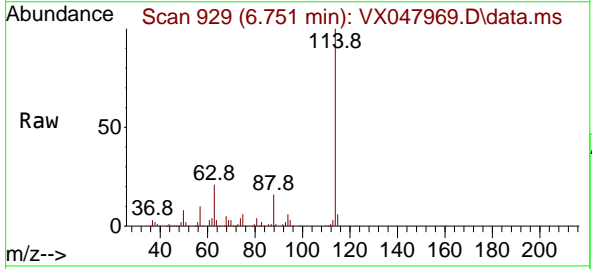
Instrument : MSVOA_X
 ClientSampleId : TT192D2-20250922

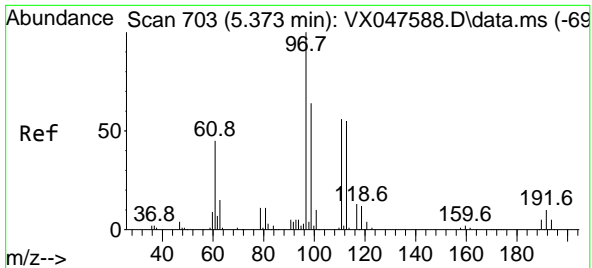
Tgt Ion: 65 Resp: 110633
 Ion Ratio Lower Upper
 65 100
 67 51.7 0.0 103.0



#34
 1,4-Difluorobenzene
 Concen: 50.000 ug/l
 RT: 6.751 min Scan# 929
 Delta R.T. 0.006 min
 Lab File: VX047969.D
 Acq: 02 Oct 2025 15:31

Tgt Ion:114 Resp: 268695
 Ion Ratio Lower Upper
 114 100
 63 24.2 0.0 44.0
 88 16.0 0.0 34.2

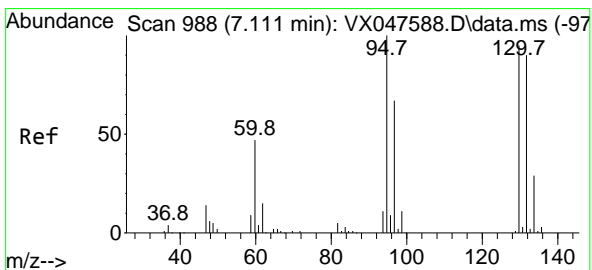
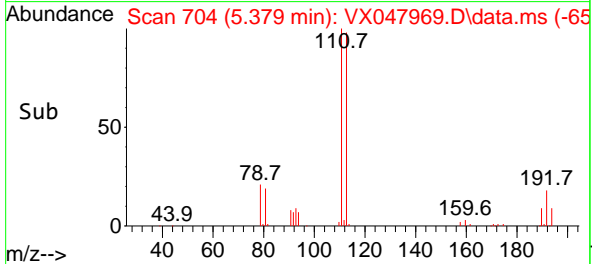
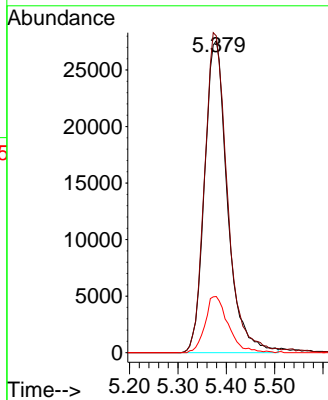
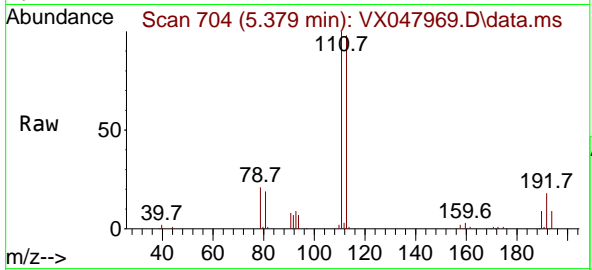




#35
 Dibromofluoromethane
 Concen: 50.276 ug/l
 RT: 5.379 min Scan# 704
 Delta R.T. 0.006 min
 Lab File: VX047969.D
 Acq: 02 Oct 2025 15:31

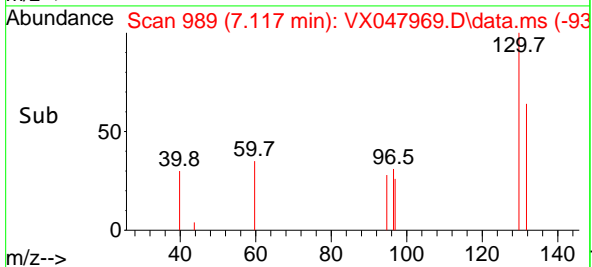
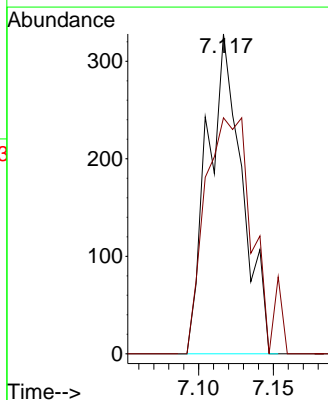
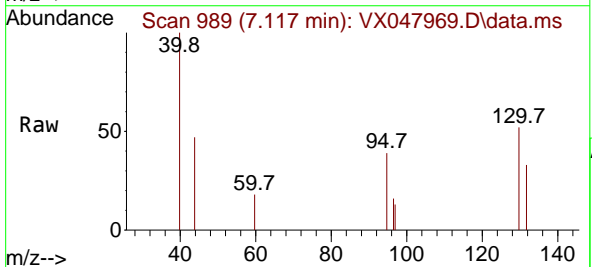
Instrument : MSVOA_X
 ClientSampleId : TT192D2-20250922

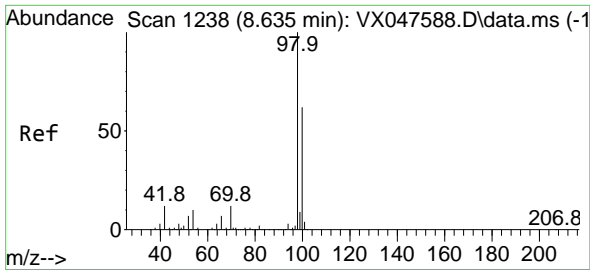
Tgt Ion	Resp	Lower	Upper
113	90598		
113	100		
111	102.8	80.9	121.3
192	18.3	14.2	21.4



#44
 Trichloroethene
 Concen: 0.274 ug/l
 RT: 7.117 min Scan# 989
 Delta R.T. 0.006 min
 Lab File: VX047969.D
 Acq: 02 Oct 2025 15:31

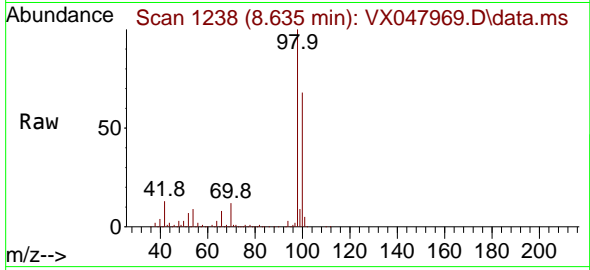
Tgt Ion	Resp	Lower	Upper
130	529		
130	100		
95	73.8	0.0	210.8



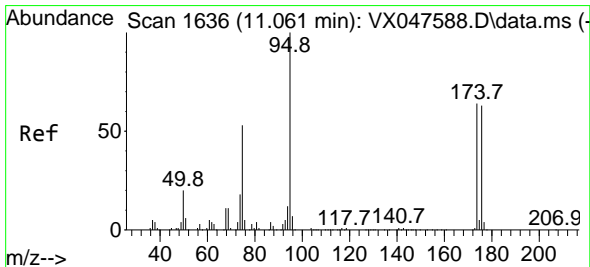
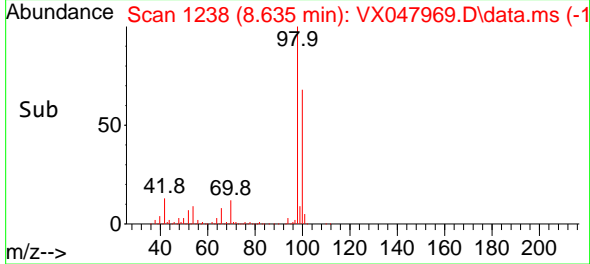
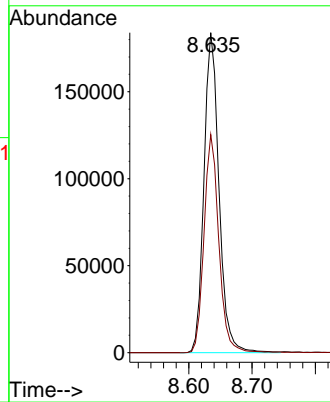


#50
 Toluene-d8
 Concen: 48.807 ug/l
 RT: 8.635 min Scan# 11
 Delta R.T. -0.000 min
 Lab File: VX047969.D
 Acq: 02 Oct 2025 15:31

Instrument : MSVOA_X
 ClientSampleId : TT192D2-20250922

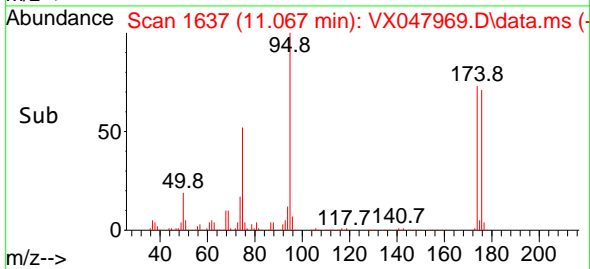
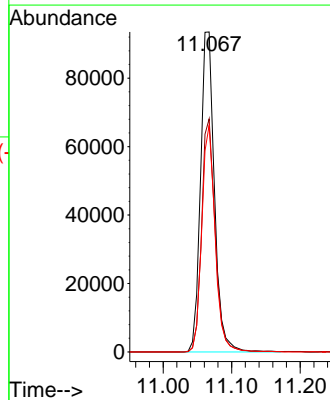
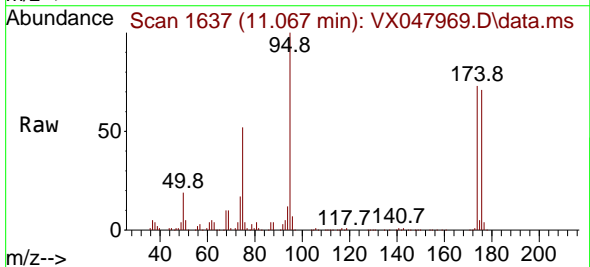


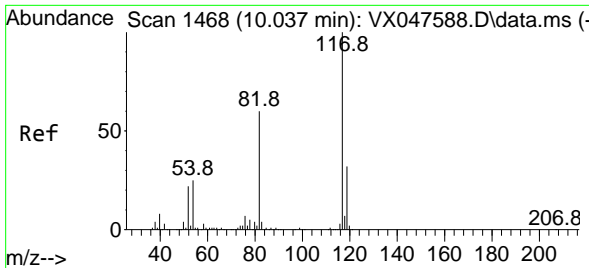
Tgt Ion: 98 Resp: 304329
 Ion Ratio Lower Upper
 98 100
 100 67.2 53.0 79.4



#62
 4-Bromofluorobenzene
 Concen: 55.939 ug/l
 RT: 11.067 min Scan# 1637
 Delta R.T. 0.006 min
 Lab File: VX047969.D
 Acq: 02 Oct 2025 15:31

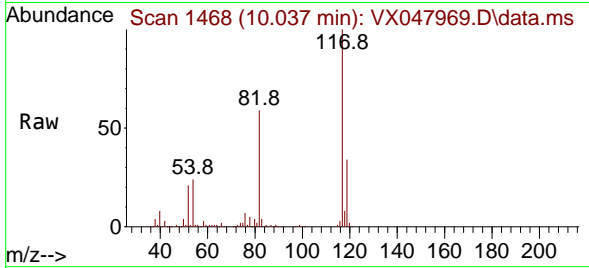
Tgt Ion: 95 Resp: 132376
 Ion Ratio Lower Upper
 95 100
 174 71.1 0.0 141.6
 176 68.2 0.0 138.4





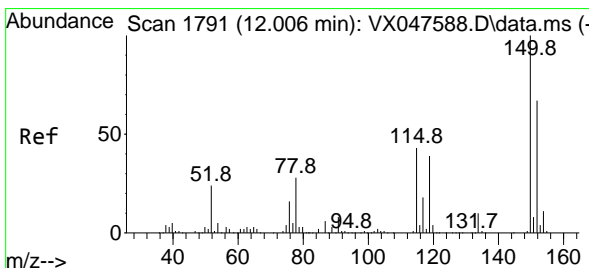
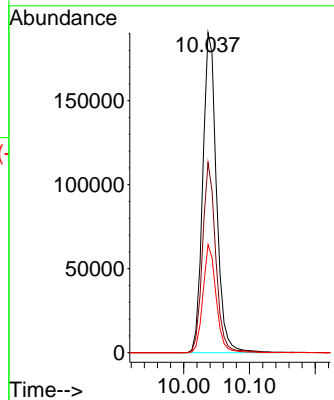
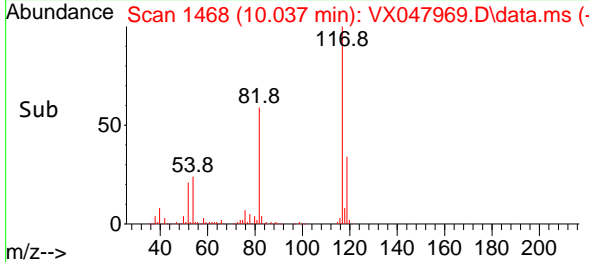
#63
 Chlorobenzene-d5
 Concen: 50.000 ug/l
 RT: 10.037 min Scan# 14
 Delta R.T. -0.000 min
 Lab File: VX047969.D
 Acq: 02 Oct 2025 15:31

Instrument :
 MSVOA_X
 ClientSampleId :
 TT192D2-20250922

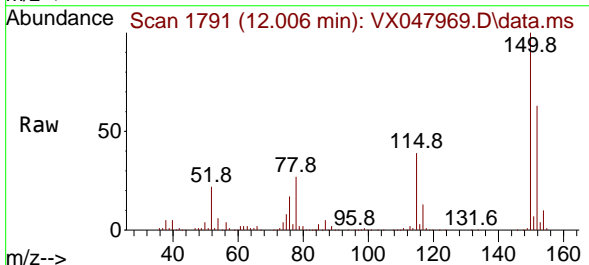


Tgt Ion:117 Resp: 276743

Ion	Ratio	Lower	Upper
117	100		
82	59.4	47.8	71.6
119	33.8	25.2	37.8



#72
 1,4-Dichlorobenzene-d4
 Concen: 50.000 ug/l
 RT: 12.006 min Scan# 1791
 Delta R.T. -0.000 min
 Lab File: VX047969.D
 Acq: 02 Oct 2025 15:31



Tgt Ion:152 Resp: 140515

Ion	Ratio	Lower	Upper
152	100		
115	61.7	44.9	134.5
150	157.0	0.0	352.0

