

Data Path : Z:\voasrv\HPCHEM1\MSVOA_X\Data\VX100225\
 Data File : VX047971.D
 Acq On : 02 Oct 2025 16:12
 Operator : JC/MD
 Sample : Q3194-11
 Misc : 5.0mL/MSVOA_X/WATER
 ALS Vial : 20 Sample Multiplier: 1

Instrument :
 MSVOA_X
 ClientSampleId :
 DUP10-20250922

Quant Time: Oct 03 03:32:59 2025
 Quant Method : Z:\voasrv\HPCHEM1\MSVOA_X\Method\82X091625W.M
 Quant Title : SW846 8260
 QLast Update : Wed Sep 17 06:39:58 2025
 Response via : Initial Calibration

Compound	R.T.	QIon	Response	Conc	Units	Dev(Min)

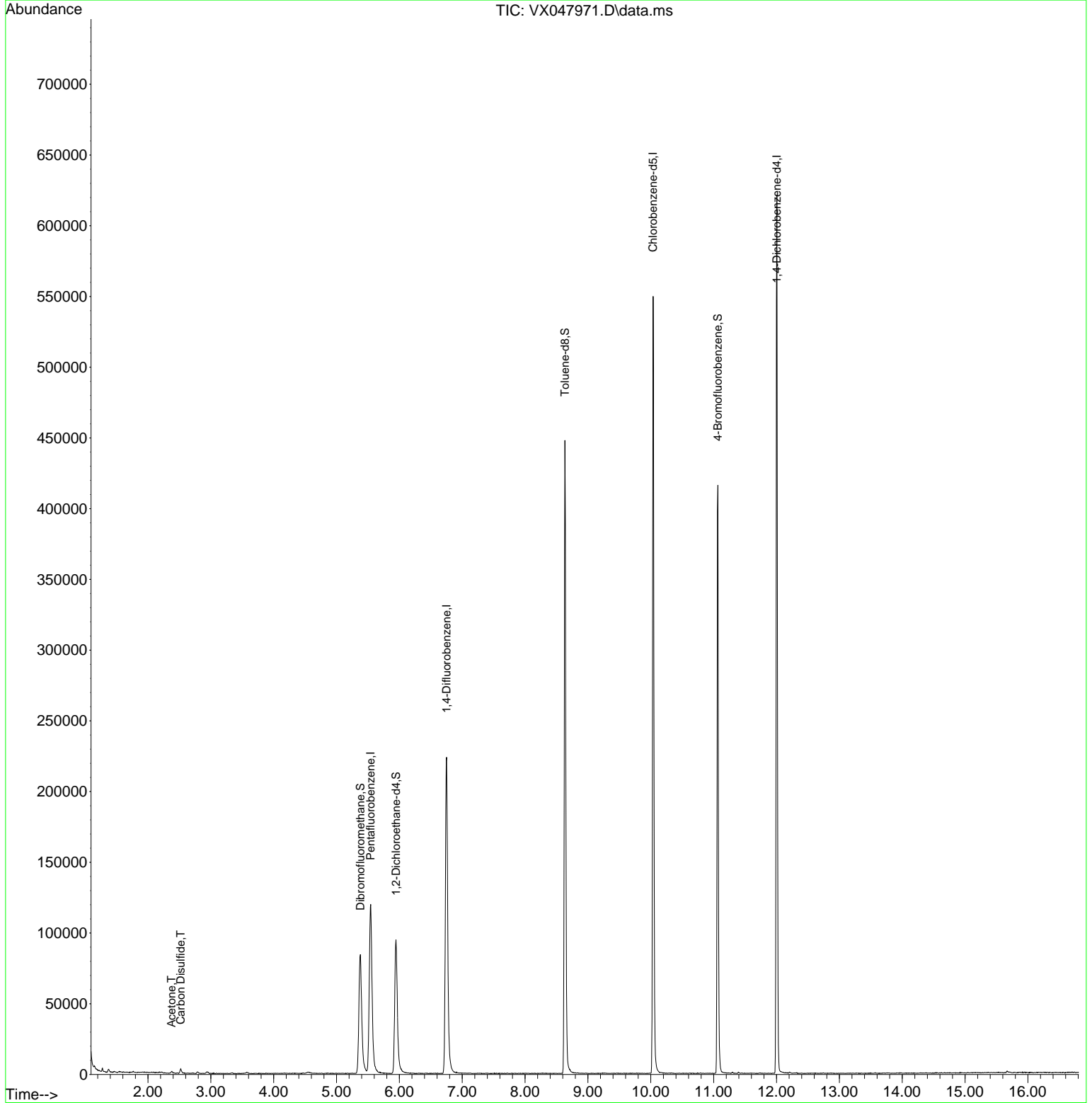
Internal Standards						
1) Pentafluorobenzene	5.544	168	118221	50.000	ug/l	0.00
34) 1,4-Difluorobenzene	6.751	114	245311	50.000	ug/l	0.00
63) Chlorobenzene-d5	10.037	117	254640	50.000	ug/l	0.00
72) 1,4-Dichlorobenzene-d4	12.006	152	129857	50.000	ug/l	0.00
System Monitoring Compounds						
33) 1,2-Dichloroethane-d4	5.946	65	103647	55.079	ug/l	0.00
Spiked Amount	50.000	Range	78 - 117	Recovery	=	110.160%
35) Dibromofluoromethane	5.379	113	84073	51.102	ug/l	0.00
Spiked Amount	50.000	Range	75 - 124	Recovery	=	102.200%
50) Toluene-d8	8.634	98	276326	48.541	ug/l	0.00
Spiked Amount	50.000	Range	92 - 112	Recovery	=	97.080%
62) 4-Bromofluorobenzene	11.067	95	118887	55.028	ug/l	0.00
Spiked Amount	50.000	Range	83 - 123	Recovery	=	110.060%
Target Compounds						
					Qvalue	
16) Acetone	2.373	43	1596	1.951	ug/l #	80
17) Carbon Disulfide	2.520	76	2702	0.703	ug/l	99

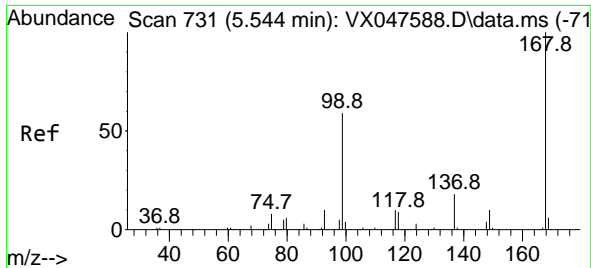
(#) = qualifier out of range (m) = manual integration (+) = signals summed

Data Path : Z:\voasrv\HPCHEM1\MSVOA_X\Data\VX100225\
 Data File : VX047971.D
 Acq On : 02 Oct 2025 16:12
 Operator : JC/MD
 Sample : Q3194-11
 Misc : 5.0mL/MSVOA_X/WATER
 ALS Vial : 20 Sample Multiplier: 1

Instrument :
 MSVOA_X
 ClientSampleId :
 DUP10-20250922

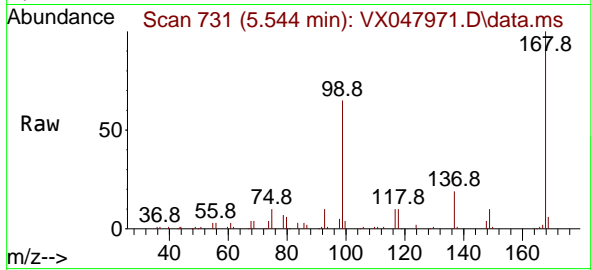
Quant Time: Oct 03 03:32:59 2025
 Quant Method : Z:\voasrv\HPCHEM1\MSVOA_X\Method\82X091625W.M
 Quant Title : SW846 8260
 QLast Update : Wed Sep 17 06:39:58 2025
 Response via : Initial Calibration



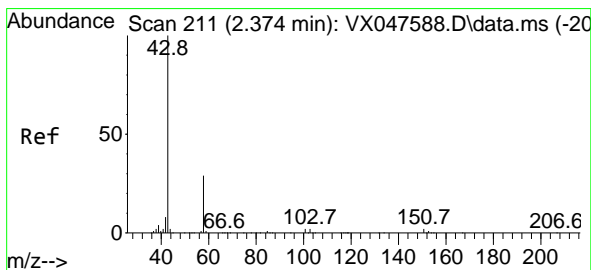
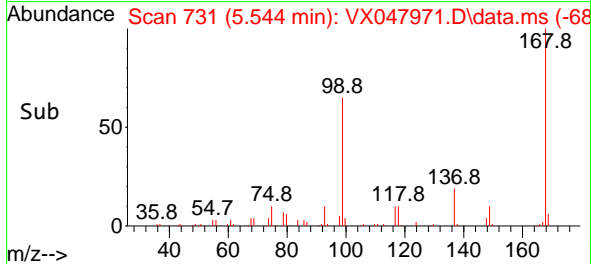
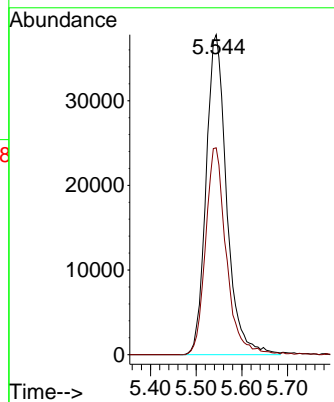


#1
 Pentafluorobenzene
 Concen: 50.000 ug/l
 RT: 5.544 min Scan# 71
 Delta R.T. -0.000 min
 Lab File: VX047971.D
 Acq: 02 Oct 2025 16:12

Instrument : MSVOA_X
 ClientSampleId : DUP10-20250922

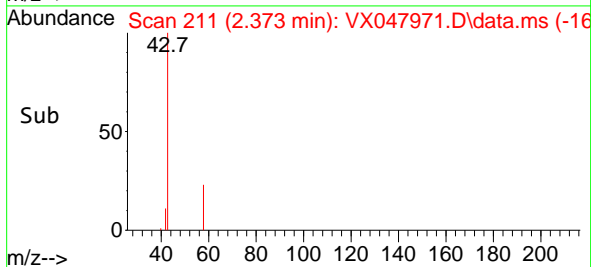
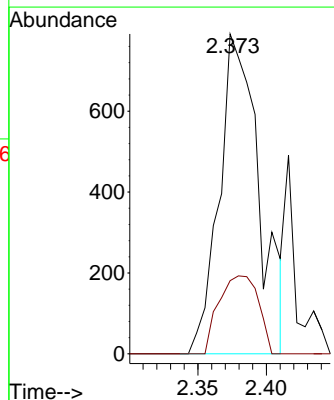
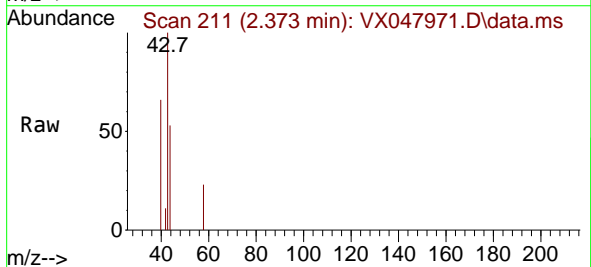


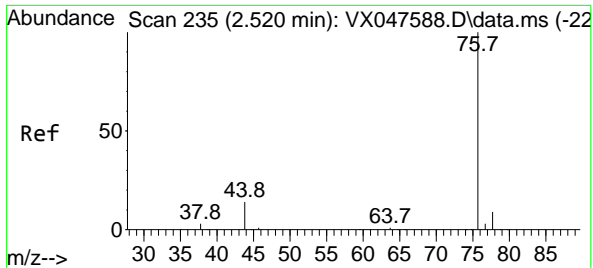
Tgt Ion:168 Resp: 118221
 Ion Ratio Lower Upper
 168 100
 99 64.6 48.8 73.2



#16
 Acetone
 Concen: 1.951 ug/l
 RT: 2.373 min Scan# 211
 Delta R.T. -0.000 min
 Lab File: VX047971.D
 Acq: 02 Oct 2025 16:12

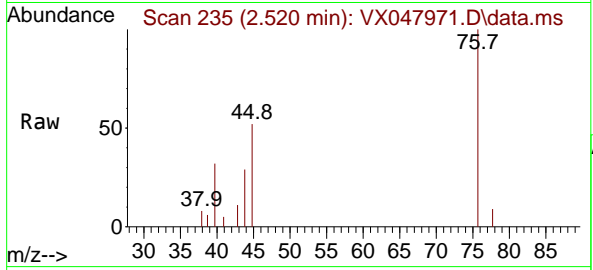
Tgt Ion: 43 Resp: 1596
 Ion Ratio Lower Upper
 43 100
 58 18.6 23.4 35.0#



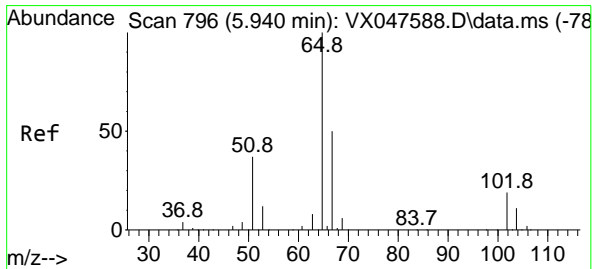
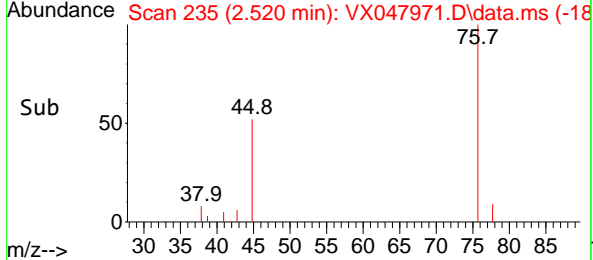
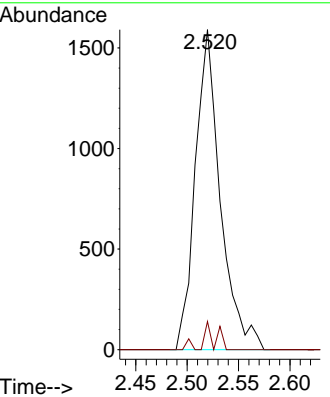


#17
 Carbon Disulfide
 Concen: 0.703 ug/l
 RT: 2.520 min Scan# 21
 Delta R.T. -0.000 min
 Lab File: VX047971.D
 Acq: 02 Oct 2025 16:12

Instrument : MSVOA_X
 ClientSampleId : DUP10-20250922

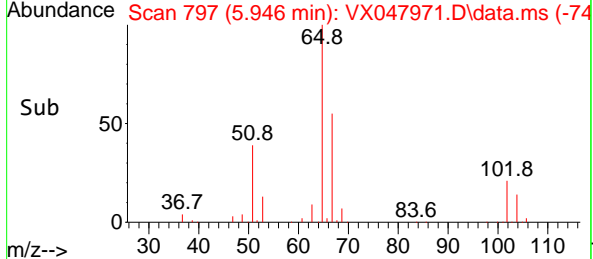
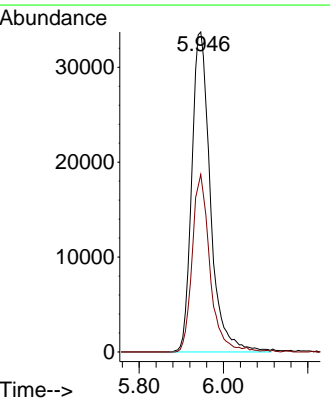
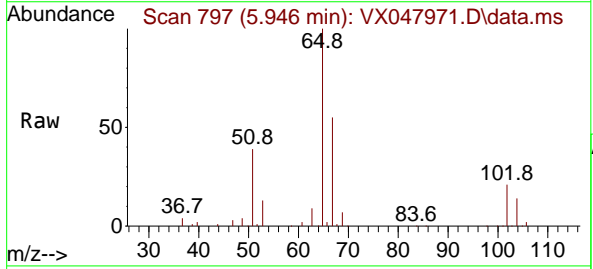


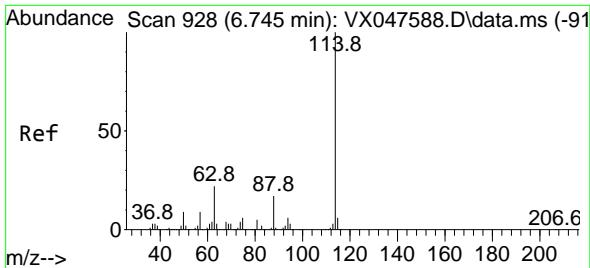
Tgt Ion: 76 Resp: 2702
 Ion Ratio Lower Upper
 76 100
 78 8.8 6.8 10.2



#33
 1,2-Dichloroethane-d4
 Concen: 55.079 ug/l
 RT: 5.946 min Scan# 797
 Delta R.T. 0.006 min
 Lab File: VX047971.D
 Acq: 02 Oct 2025 16:12

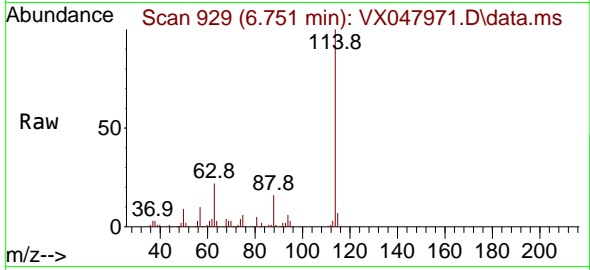
Tgt Ion: 65 Resp: 103647
 Ion Ratio Lower Upper
 65 100
 67 52.8 0.0 103.0



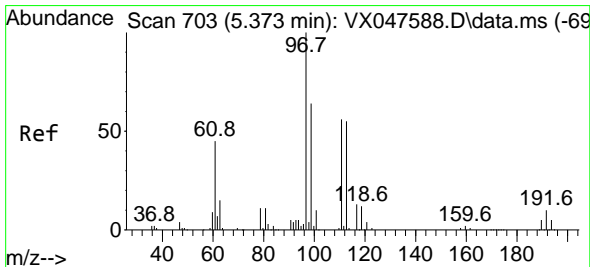
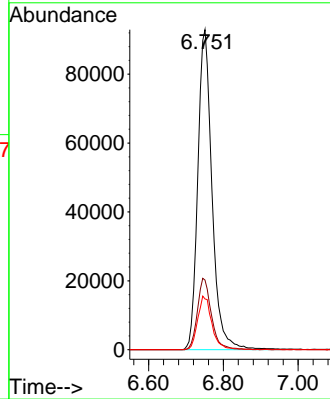
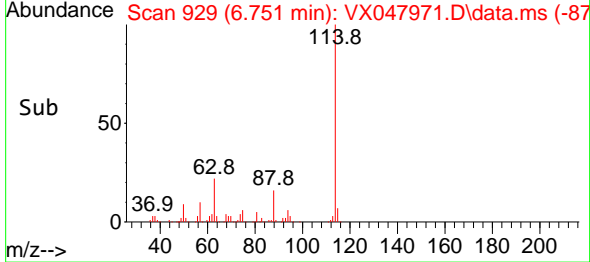


#34
 1,4-Difluorobenzene
 Concen: 50.000 ug/l
 RT: 6.751 min Scan# 91
 Delta R.T. 0.006 min
 Lab File: VX047971.D
 Acq: 02 Oct 2025 16:12

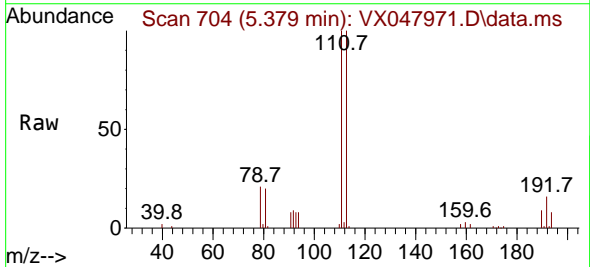
Instrument :
 MSVOA_X
 ClientSampleId :
 DUP10-20250922



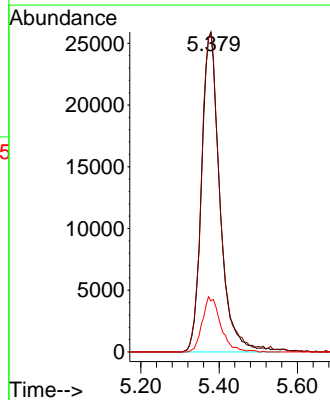
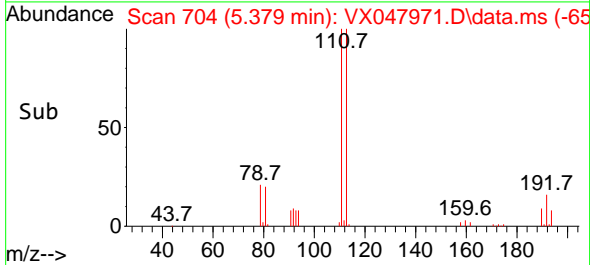
Tgt Ion:114 Resp: 245311
 Ion Ratio Lower Upper
 114 100
 63 21.8 0.0 44.0
 88 15.8 0.0 34.2

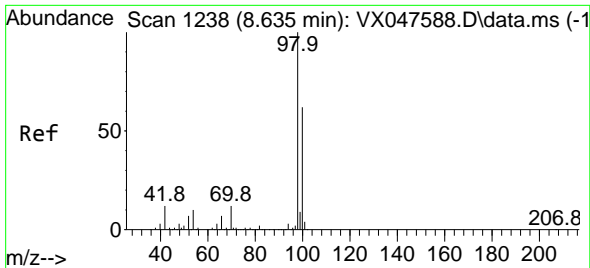


#35
 Dibromofluoromethane
 Concen: 51.102 ug/l
 RT: 5.379 min Scan# 704
 Delta R.T. 0.006 min
 Lab File: VX047971.D
 Acq: 02 Oct 2025 16:12



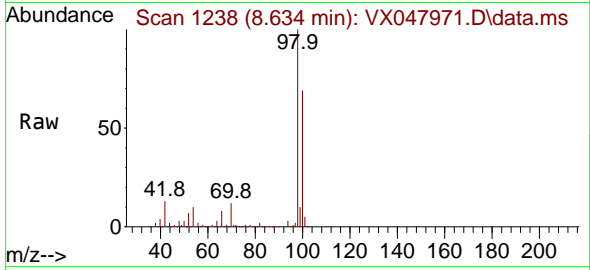
Tgt Ion:113 Resp: 84073
 Ion Ratio Lower Upper
 113 100
 111 99.3 80.9 121.3
 192 17.1 14.2 21.4



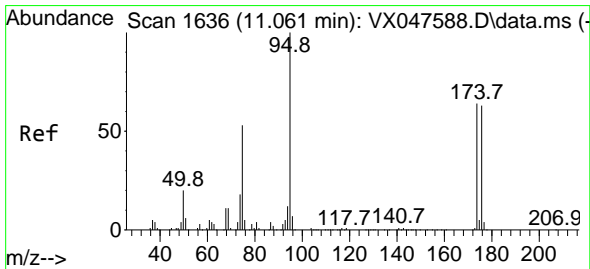
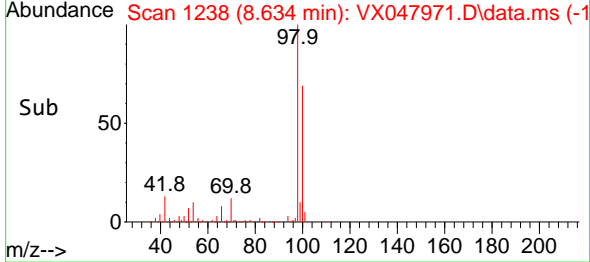
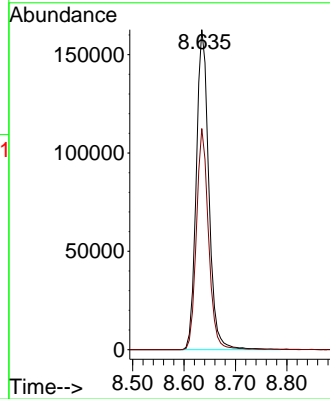


#50
 Toluene-d8
 Concen: 48.541 ug/l
 RT: 8.634 min Scan# 11
 Delta R.T. -0.000 min
 Lab File: VX047971.D
 Acq: 02 Oct 2025 16:12

Instrument :
 MSVOA_X
 ClientSampleId :
 DUP10-20250922

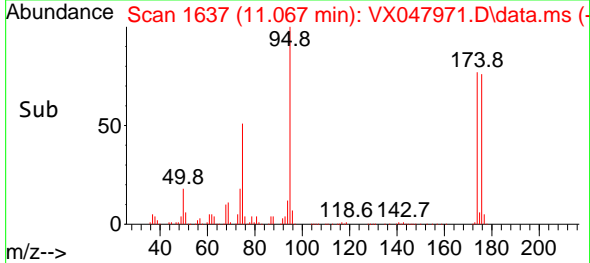
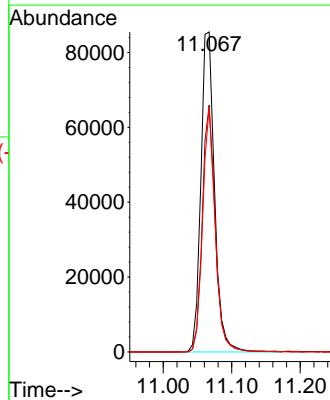
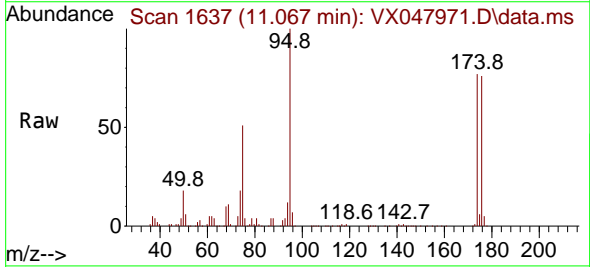


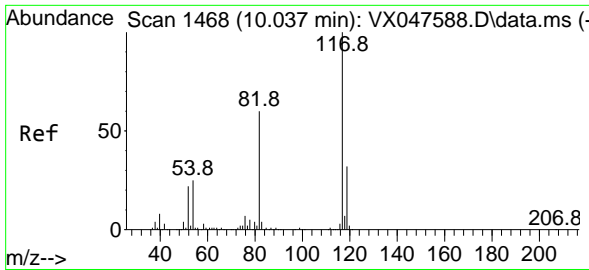
Tgt Ion: 98 Resp: 276326
 Ion Ratio Lower Upper
 98 100
 100 66.8 53.0 79.4



#62
 4-Bromofluorobenzene
 Concen: 55.028 ug/l
 RT: 11.067 min Scan# 1637
 Delta R.T. 0.006 min
 Lab File: VX047971.D
 Acq: 02 Oct 2025 16:12

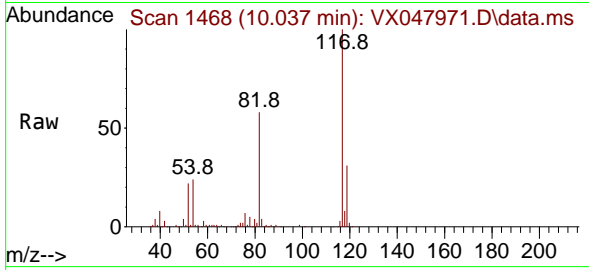
Tgt Ion: 95 Resp: 118887
 Ion Ratio Lower Upper
 95 100
 174 73.3 0.0 141.6
 176 70.1 0.0 138.4



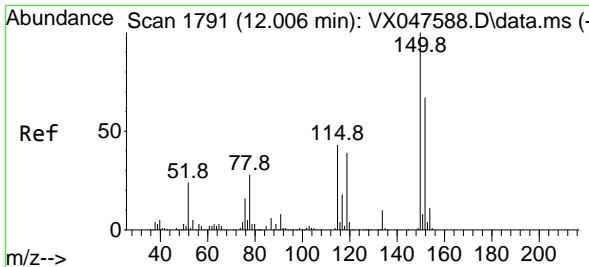
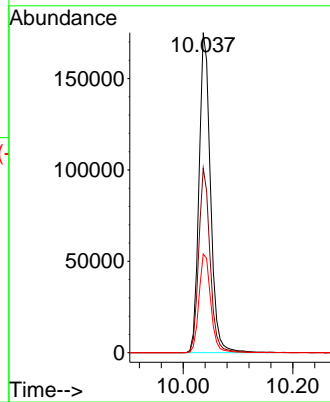
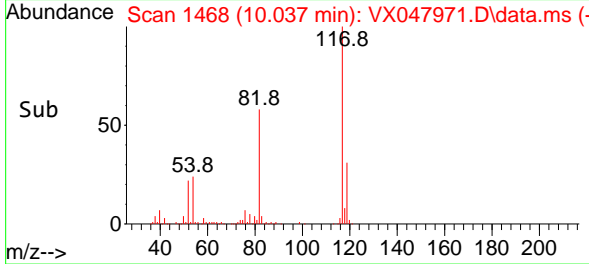


#63
 Chlorobenzene-d5
 Concen: 50.000 ug/l
 RT: 10.037 min Scan# 1468
 Delta R.T. -0.000 min
 Lab File: VX047971.D
 Acq: 02 Oct 2025 16:12

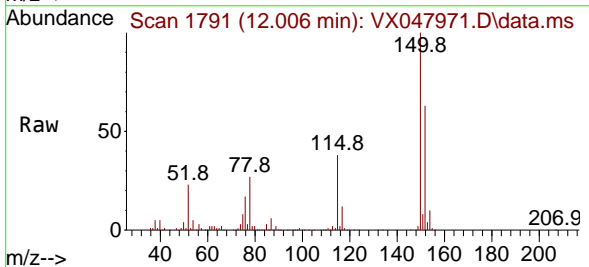
Instrument : MSVOA_X
 ClientSampleId : DUP10-20250922



Tgt Ion:117 Resp: 254640
 Ion Ratio Lower Upper
 117 100
 82 57.7 47.8 71.6
 119 30.8 25.2 37.8



#72
 1,4-Dichlorobenzene-d4
 Concen: 50.000 ug/l
 RT: 12.006 min Scan# 1791
 Delta R.T. -0.000 min
 Lab File: VX047971.D
 Acq: 02 Oct 2025 16:12



Tgt Ion:152 Resp: 129857
 Ion Ratio Lower Upper
 152 100
 115 61.6 44.9 134.5
 150 157.3 0.0 352.0

