

Data Path : Z:\voasrv\HPCHEM1\MSVOA_X\Data\VX100225\
 Data File : VX047974.D
 Acq On : 02 Oct 2025 17:15
 Operator : JC/MD
 Sample : Q3194-14
 Misc : 5.0mL/MSVOA_X/WATER
 ALS Vial : 23 Sample Multiplier: 1

Instrument :
 MSVOA_X
 ClientSampleId :
 RE139D1-20250924

Quant Time: Oct 03 03:34:08 2025
 Quant Method : Z:\voasrv\HPCHEM1\MSVOA_X\Method\82X091625W.M
 Quant Title : SW846 8260
 QLast Update : Wed Sep 17 06:39:58 2025
 Response via : Initial Calibration

Compound	R.T.	QIon	Response	Conc	Units	Dev(Min)

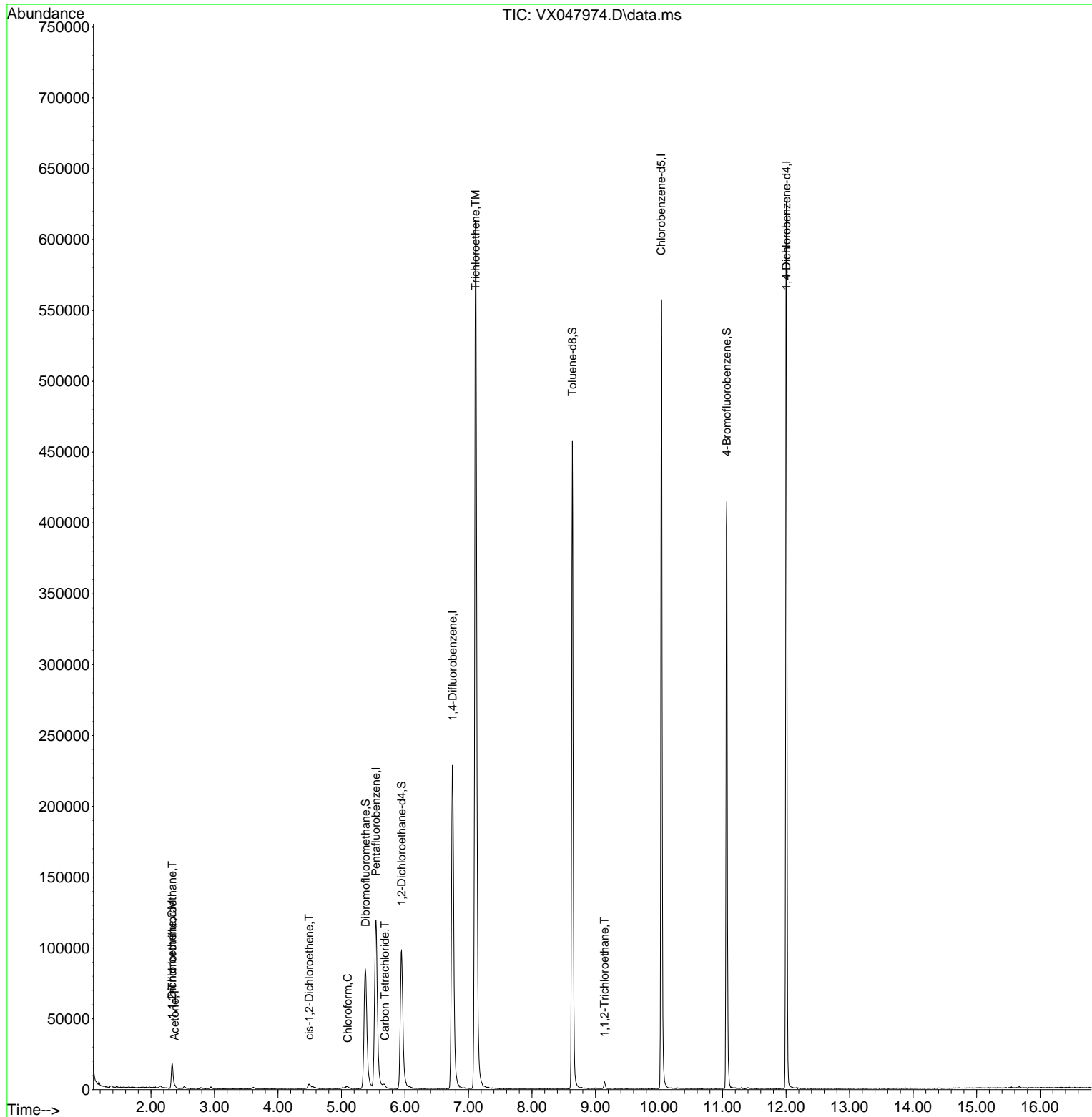
Internal Standards						
1) Pentafluorobenzene	5.544	168	119700	50.000	ug/l	0.00
34) 1,4-Difluorobenzene	6.751	114	247669	50.000	ug/l	0.00
63) Chlorobenzene-d5	10.037	117	257419	50.000	ug/l	0.00
72) 1,4-Dichlorobenzene-d4	12.006	152	133075	50.000	ug/l	0.00
System Monitoring Compounds						
33) 1,2-Dichloroethane-d4	5.946	65	105972	55.619	ug/l	0.00
Spiked Amount	50.000	Range 78 - 117	Recovery	=	111.240%	
35) Dibromofluoromethane	5.379	113	84612	50.940	ug/l	0.00
Spiked Amount	50.000	Range 75 - 124	Recovery	=	101.880%	
50) Toluene-d8	8.634	98	280277	48.766	ug/l	0.00
Spiked Amount	50.000	Range 92 - 112	Recovery	=	97.540%	
62) 4-Bromofluorobenzene	11.067	95	122056	55.957	ug/l	0.00
Spiked Amount	50.000	Range 83 - 123	Recovery	=	111.920%	
Target Compounds						
						Qvalue
9) 1,1,2-Trichlorotrifluo...	2.337	101	4927	3.559	ug/l	98
12) 1,1-Dichloroethene	2.331	96	2964	2.084	ug/l	90
16) Acetone	2.373	43	1662	2.006	ug/l #	83
27) cis-1,2-Dichloroethene	4.489	96	2194	1.170	ug/l	95
30) Chloroform	5.099	83	1993	0.652	ug/l #	59
38) Carbon Tetrachloride	5.684	117	2335	0.885	ug/l #	67
44) Trichloroethene	7.110	130	254436	142.763	ug/l	96
55) 1,1,2-Trichloroethane	9.140	97	1411	0.806	ug/l #	86

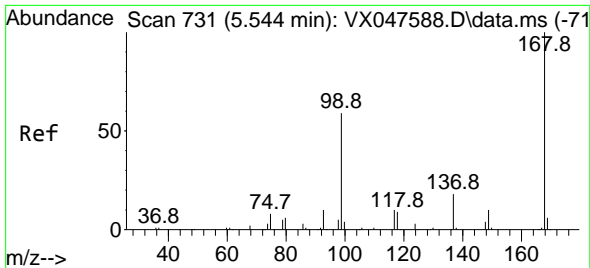
(#) = qualifier out of range (m) = manual integration (+) = signals summed

Data Path : Z:\voasrv\HPCHEM1\MSVOA_X\Data\VX100225\
 Data File : VX047974.D
 Acq On : 02 Oct 2025 17:15
 Operator : JC/MD
 Sample : Q3194-14
 Misc : 5.0mL/MSVOA_X/WATER
 ALS Vial : 23 Sample Multiplier: 1

Instrument :
 MSVOA_X
 ClientSampleId :
 RE139D1-20250924

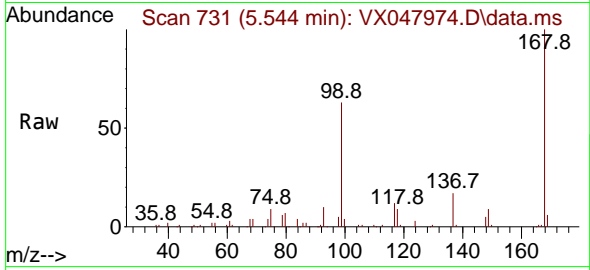
Quant Time: Oct 03 03:34:08 2025
 Quant Method : Z:\voasrv\HPCHEM1\MSVOA_X\Method\82X091625W.M
 Quant Title : SW846 8260
 QLast Update : Wed Sep 17 06:39:58 2025
 Response via : Initial Calibration



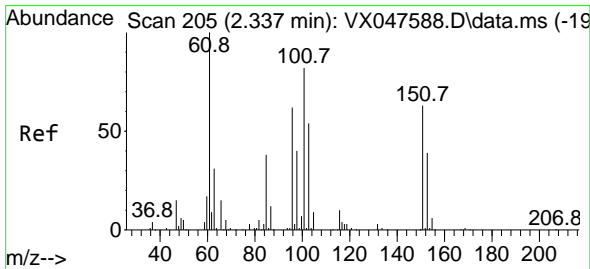
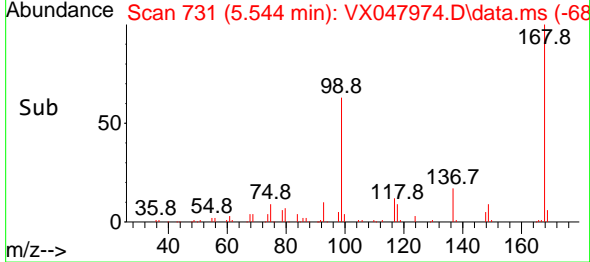
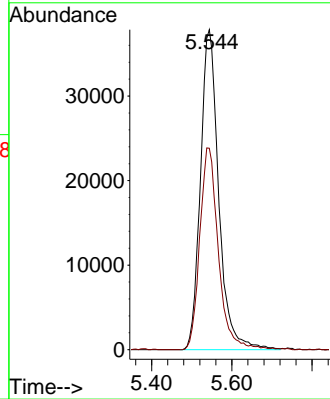


#1
 Pentafluorobenzene
 Concen: 50.000 ug/l
 RT: 5.544 min Scan# 71
 Delta R.T. -0.000 min
 Lab File: VX047974.D
 Acq: 02 Oct 2025 17:15

Instrument : MSVOA_X
 ClientSampleId : RE139D1-20250924

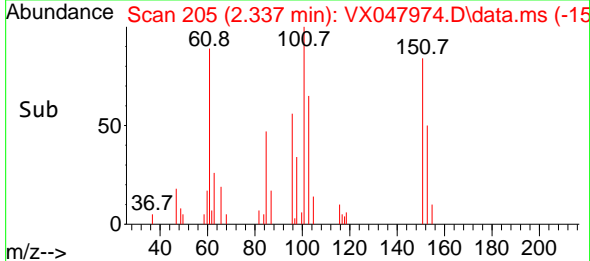
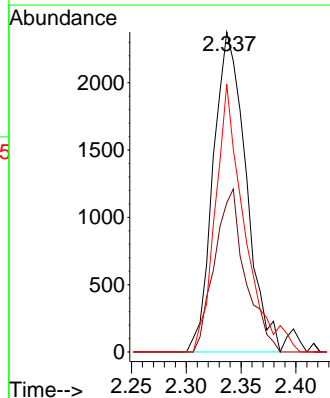
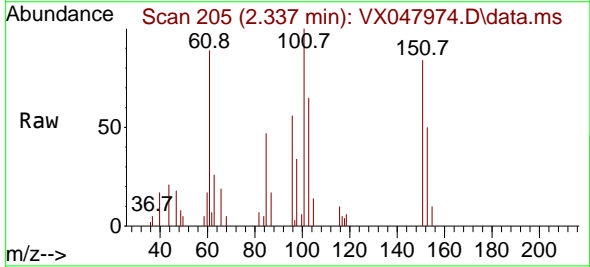


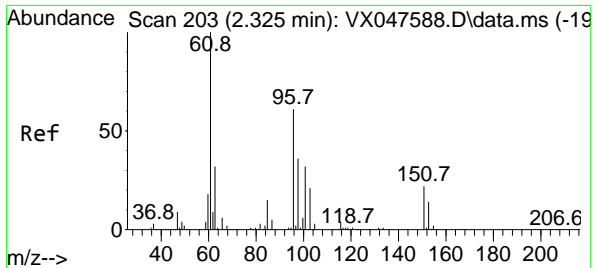
Tgt Ion:168 Resp: 119700
 Ion Ratio Lower Upper
 168 100
 99 63.0 48.8 73.2



#9
 1,1,2-Trichlorotrifluoroethane
 Concen: 3.559 ug/l
 RT: 2.337 min Scan# 205
 Delta R.T. -0.000 min
 Lab File: VX047974.D
 Acq: 02 Oct 2025 17:15

Tgt Ion:101 Resp: 4927
 Ion Ratio Lower Upper
 101 100
 85 48.0 35.5 53.3
 151 74.5 59.4 89.0



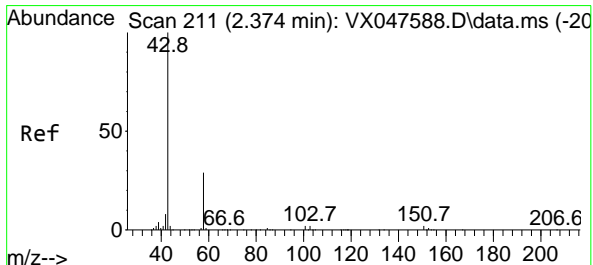
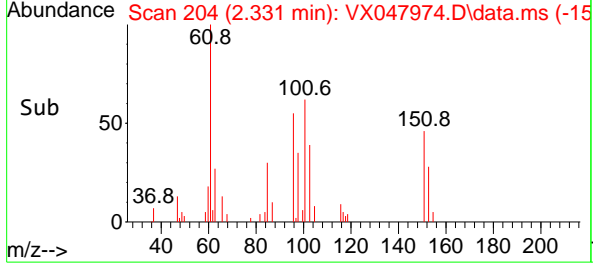
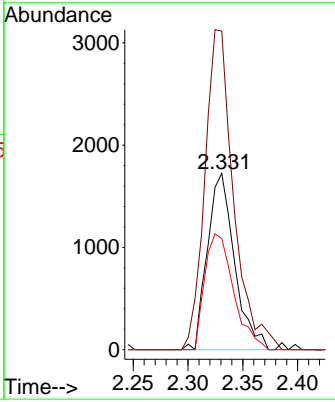
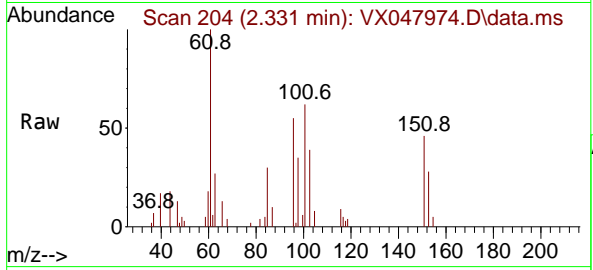


#12
 1,1-Dichloroethene
 Concen: 2.084 ug/l
 RT: 2.331 min Scan# 204
 Delta R.T. 0.006 min
 Lab File: VX047974.D
 Acq: 02 Oct 2025 17:15

Instrument : MSVOA_X
 ClientSampleId : RE139D1-20250924

Tgt Ion: 96 Resp: 2964

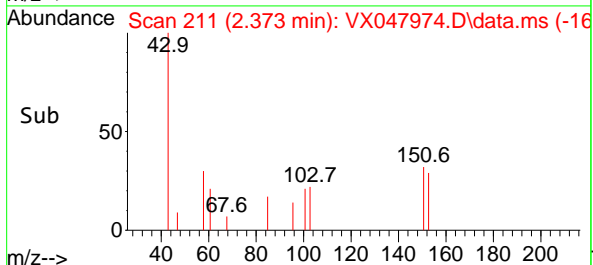
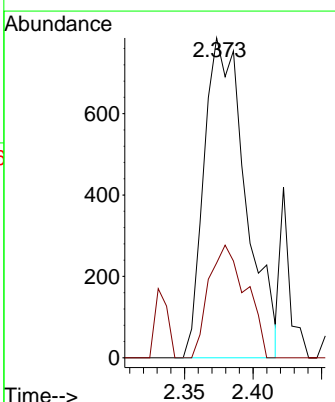
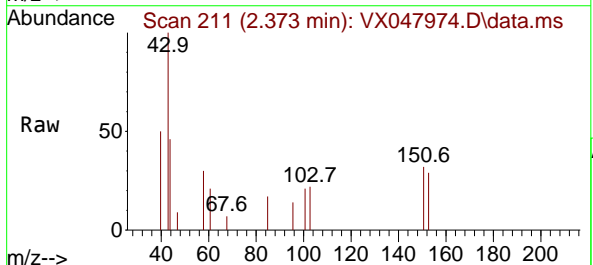
Ion	Ratio	Lower	Upper
96	100		
61	180.7	131.0	196.6
98	63.1	47.7	71.5

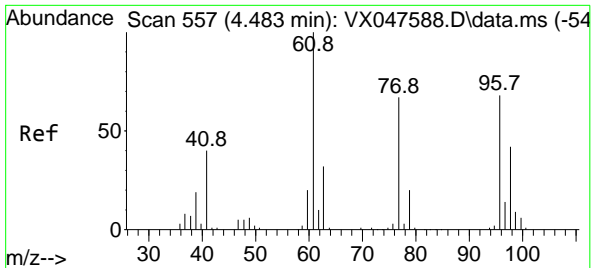


#16
 Acetone
 Concen: 2.006 ug/l
 RT: 2.373 min Scan# 211
 Delta R.T. -0.000 min
 Lab File: VX047974.D
 Acq: 02 Oct 2025 17:15

Tgt Ion: 43 Resp: 1662

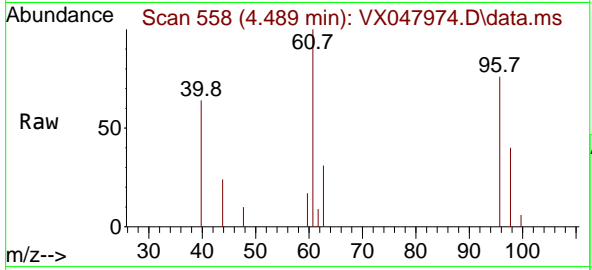
Ion	Ratio	Lower	Upper
43	100		
58	20.3	23.4	35.0#



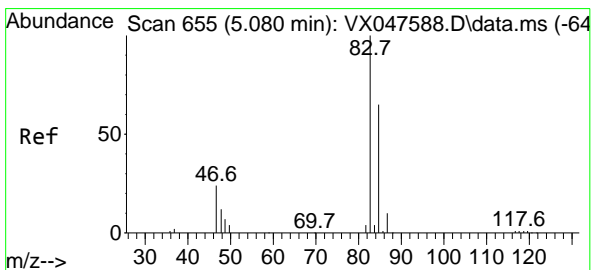
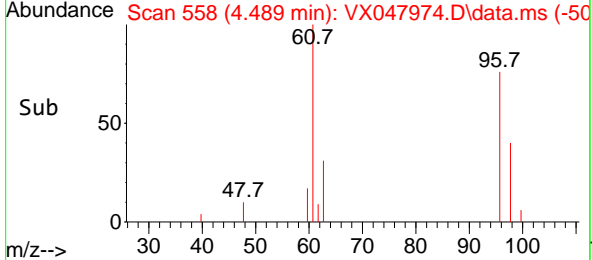
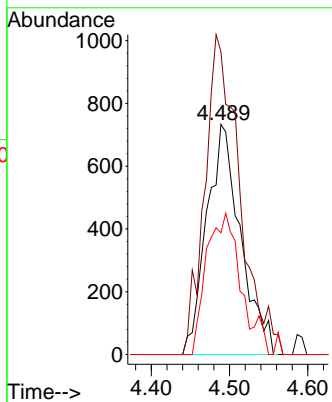


#27
 cis-1,2-Dichloroethene
 Concen: 1.170 ug/l
 RT: 4.489 min Scan# 51
 Delta R.T. 0.006 min
 Lab File: VX047974.D
 Acq: 02 Oct 2025 17:15

Instrument : MSVOA_X
 ClientSampleId : RE139D1-20250924

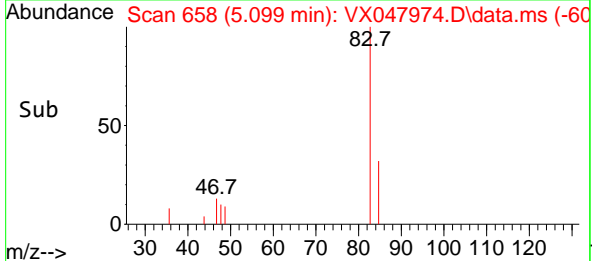
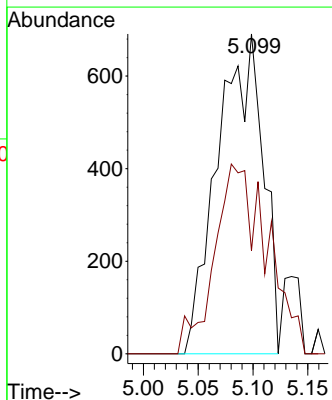
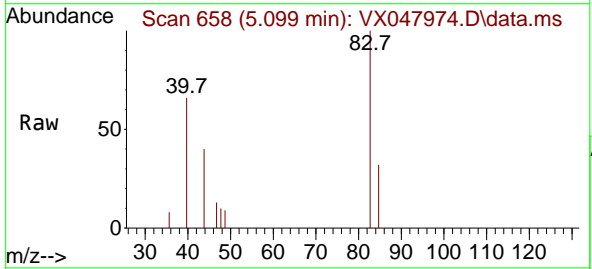


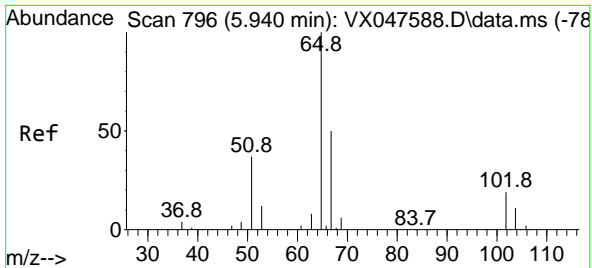
Tgt Ion: 96 Resp: 2194
 Ion Ratio Lower Upper
 96 100
 61 142.8 0.0 303.2
 98 62.7 0.0 127.8



#30
 Chloroform
 Concen: 0.652 ug/l
 RT: 5.099 min Scan# 658
 Delta R.T. 0.018 min
 Lab File: VX047974.D
 Acq: 02 Oct 2025 17:15

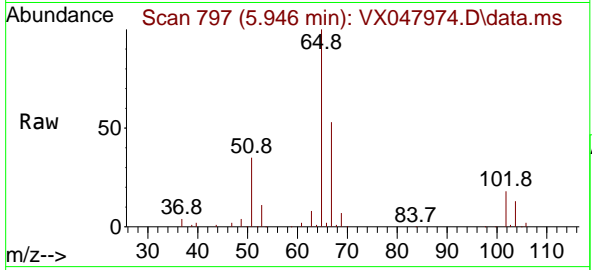
Tgt Ion: 83 Resp: 1993
 Ion Ratio Lower Upper
 83 100
 85 32.3 51.8 77.6#



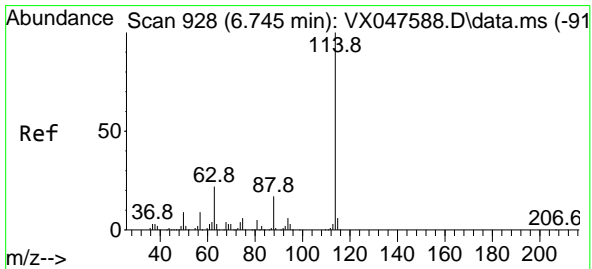
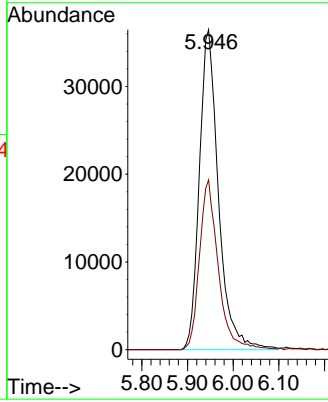
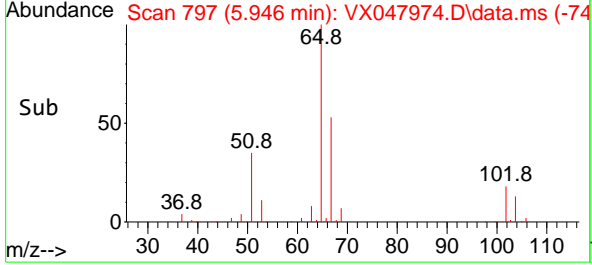


#33
 1,2-Dichloroethane-d4
 Concen: 55.619 ug/l
 RT: 5.946 min Scan# 796
 Delta R.T. 0.006 min
 Lab File: VX047974.D
 Acq: 02 Oct 2025 17:15

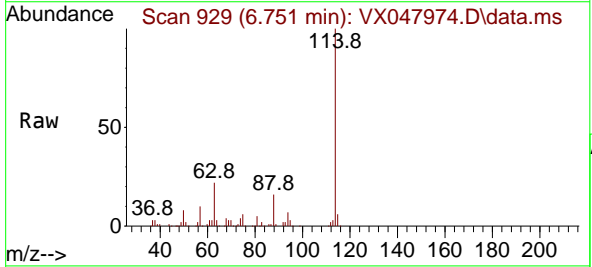
Instrument : MSVOA_X
 ClientSampleId : RE139D1-20250924



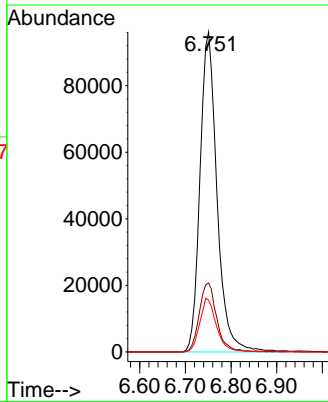
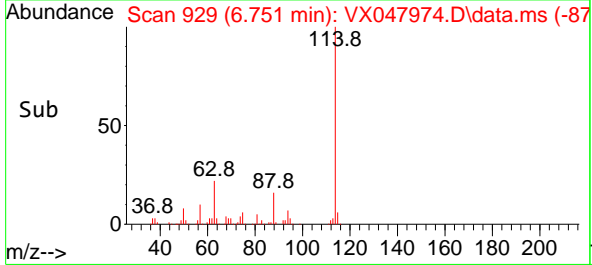
Tgt Ion: 65 Resp: 105972
 Ion Ratio Lower Upper
 65 100
 67 52.1 0.0 103.0

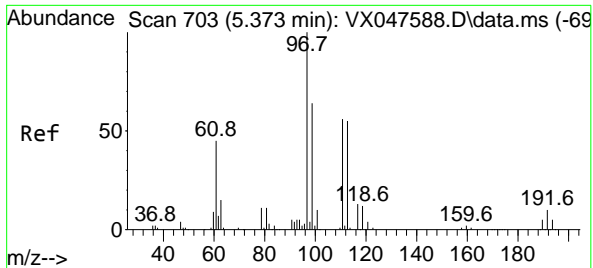


#34
 1,4-Difluorobenzene
 Concen: 50.000 ug/l
 RT: 6.751 min Scan# 929
 Delta R.T. 0.006 min
 Lab File: VX047974.D
 Acq: 02 Oct 2025 17:15



Tgt Ion: 114 Resp: 247669
 Ion Ratio Lower Upper
 114 100
 63 21.6 0.0 44.0
 88 16.2 0.0 34.2

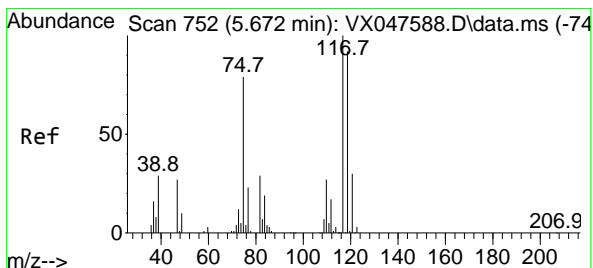
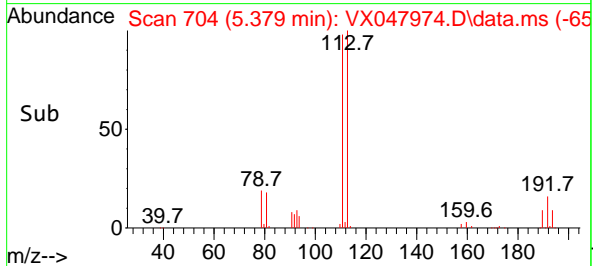
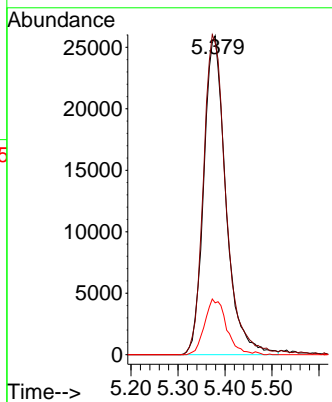
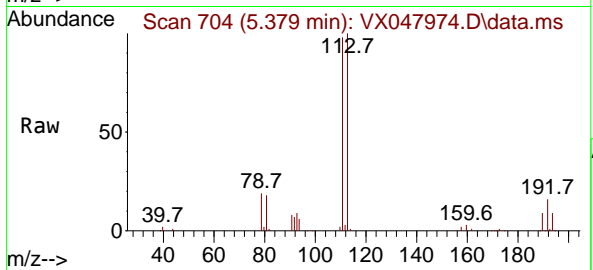




#35
 Dibromofluoromethane
 Concen: 50.940 ug/l
 RT: 5.379 min Scan# 704
 Delta R.T. 0.006 min
 Lab File: VX047974.D
 Acq: 02 Oct 2025 17:15

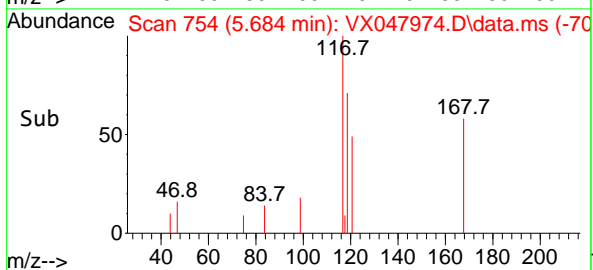
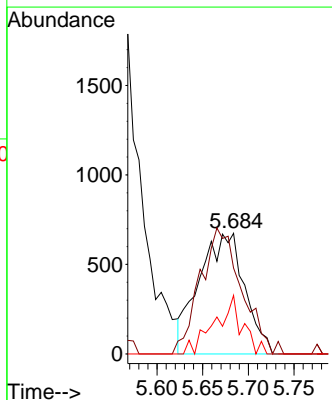
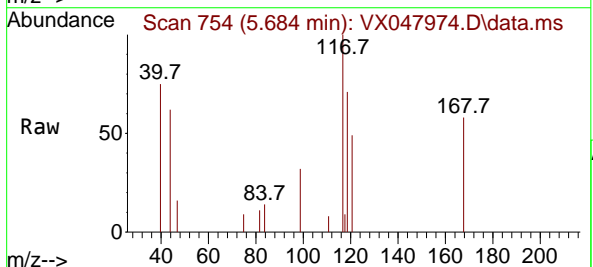
Instrument : MSVOA_X
 ClientSampleId : RE139D1-20250924

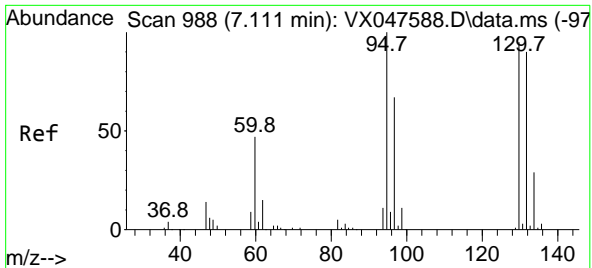
Tgt Ion	Resp	Lower	Upper
113	84612		
111	102.2	80.9	121.3
192	17.2	14.2	21.4



#38
 Carbon Tetrachloride
 Concen: 0.885 ug/l
 RT: 5.684 min Scan# 754
 Delta R.T. 0.012 min
 Lab File: VX047974.D
 Acq: 02 Oct 2025 17:15

Tgt Ion	Resp	Lower	Upper
117	2335		
119	61.0	73.4	110.2#
121	48.5	23.8	35.6#

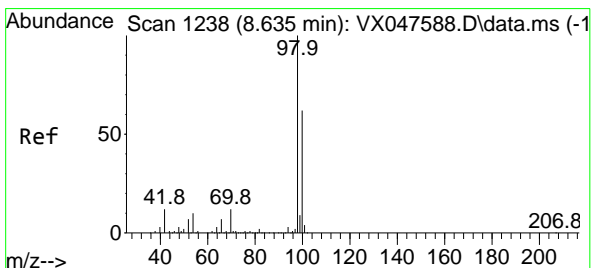
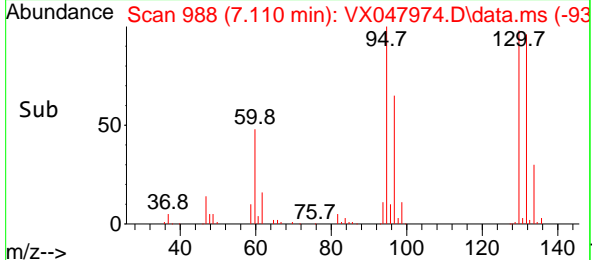
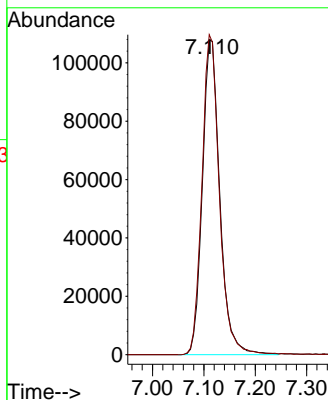
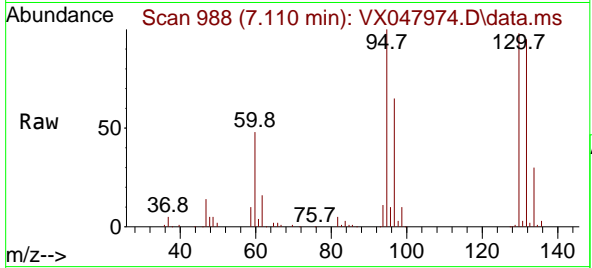




#44
 Trichloroethene
 Concen: 142.763 ug/l
 RT: 7.110 min Scan# 91
 Delta R.T. -0.000 min
 Lab File: VX047974.D
 Acq: 02 Oct 2025 17:15

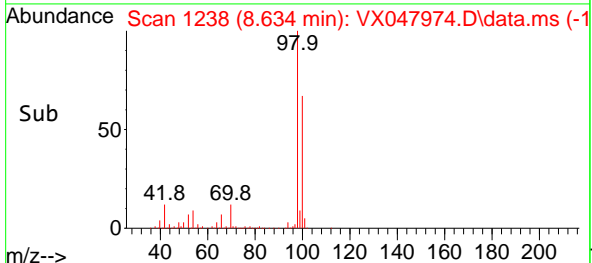
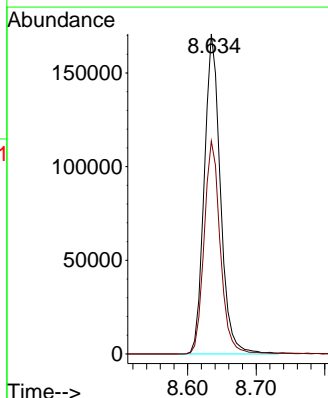
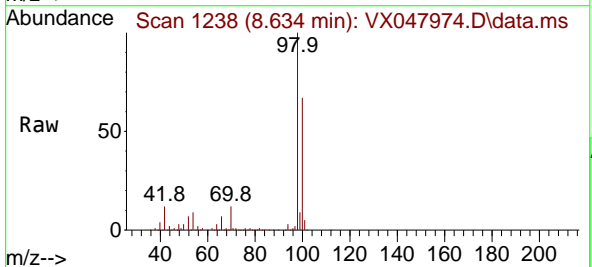
Instrument : MSVOA_X
 ClientSampleId : RE139D1-20250924

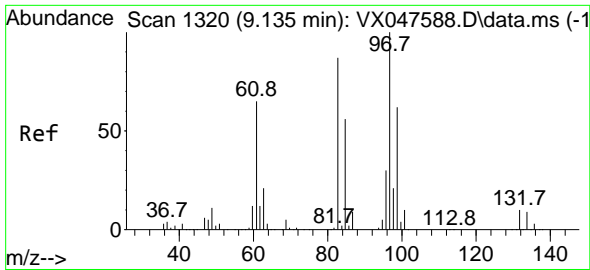
Tgt Ion:130 Resp: 254436
 Ion Ratio Lower Upper
 130 100
 95 101.7 0.0 210.8



#50
 Toluene-d8
 Concen: 48.766 ug/l
 RT: 8.634 min Scan# 1238
 Delta R.T. -0.000 min
 Lab File: VX047974.D
 Acq: 02 Oct 2025 17:15

Tgt Ion: 98 Resp: 280277
 Ion Ratio Lower Upper
 98 100
 100 66.6 53.0 79.4

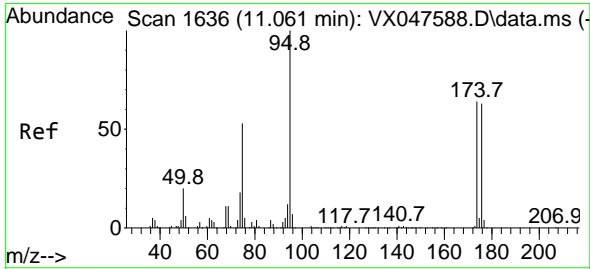
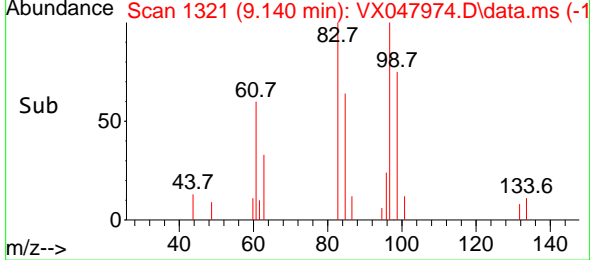
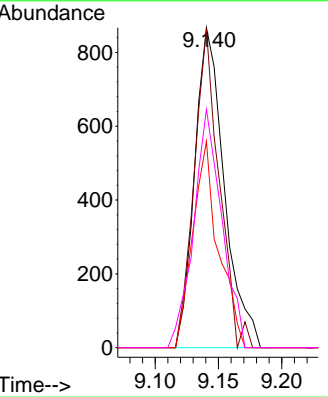
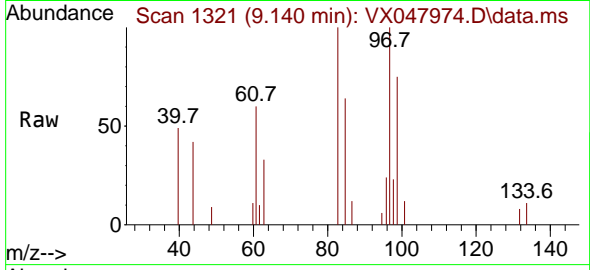




#55
 1,1,2-Trichloroethane
 Concen: 0.806 ug/l
 RT: 9.140 min Scan# 1321
 Delta R.T. 0.006 min
 Lab File: VX047974.D
 Acq: 02 Oct 2025 17:15

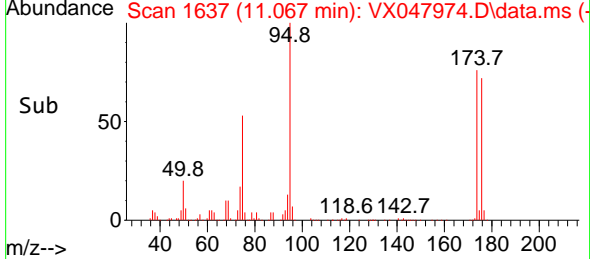
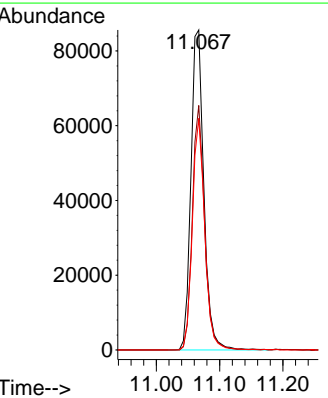
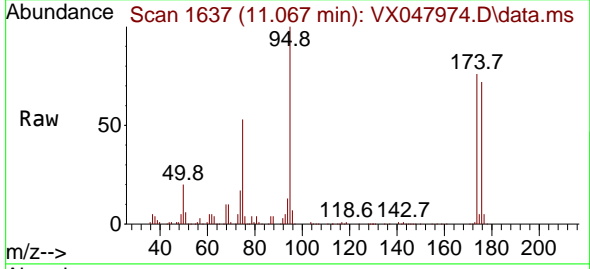
Instrument : MSVOA_X
 ClientSampleId : RE139D1-20250924

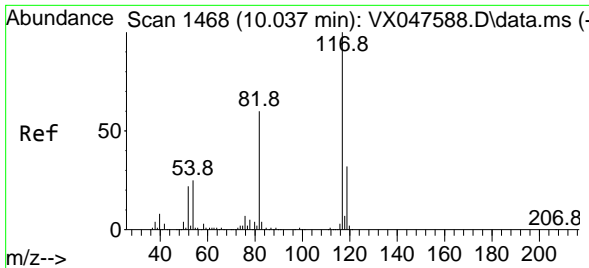
Tgt Ion	Resp	Lower	Upper
97	1411		
97	100		
83	99.8	69.6	104.4
85	64.5	45.0	67.6
99	74.5	49.6	74.4



#62
 4-Bromofluorobenzene
 Concen: 55.957 ug/l
 RT: 11.067 min Scan# 1637
 Delta R.T. 0.006 min
 Lab File: VX047974.D
 Acq: 02 Oct 2025 17:15

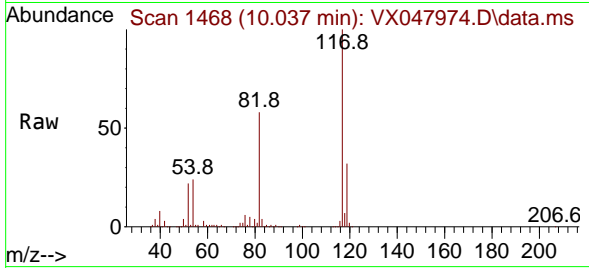
Tgt Ion	Resp	Lower	Upper
95	122056		
95	100		
174	72.5	0.0	141.6
176	69.4	0.0	138.4





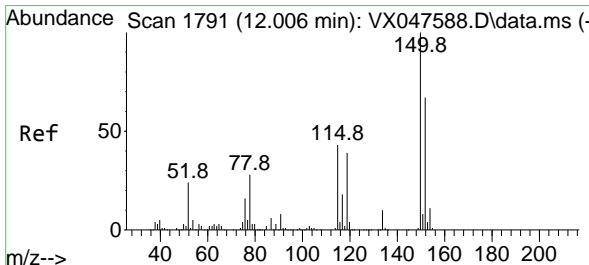
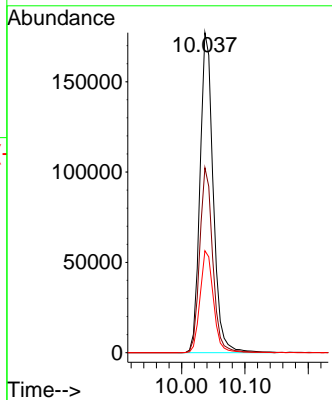
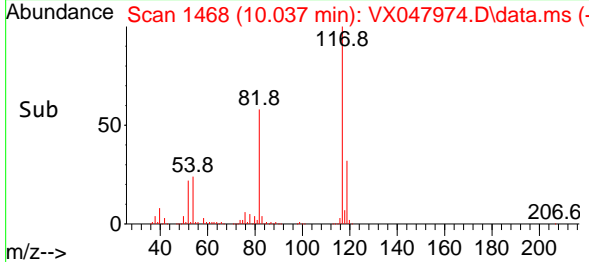
#63
 Chlorobenzene-d5
 Concen: 50.000 ug/l
 RT: 10.037 min Scan# 1468
 Delta R.T. -0.000 min
 Lab File: VX047974.D
 Acq: 02 Oct 2025 17:15

Instrument : MSVOA_X
 ClientSampleId : RE139D1-20250924

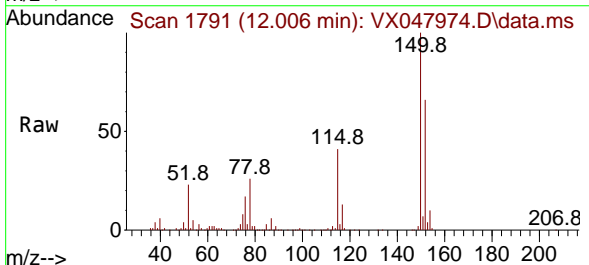


Tgt Ion:117 Resp: 257419

Ion	Ratio	Lower	Upper
117	100		
82	57.8	47.8	71.6
119	31.8	25.2	37.8



#72
 1,4-Dichlorobenzene-d4
 Concen: 50.000 ug/l
 RT: 12.006 min Scan# 1791
 Delta R.T. -0.000 min
 Lab File: VX047974.D
 Acq: 02 Oct 2025 17:15



Tgt Ion:152 Resp: 133075

Ion	Ratio	Lower	Upper
152	100		
115	62.5	44.9	134.5
150	155.5	0.0	352.0

