

Data Path : Z:\voasrv\HPCHEM1\MSVOA_X\Data\VX100225\
 Data File : VX047954.D
 Acq On : 02 Oct 2025 09:20
 Operator : JC/MD
 Sample : VX1002MBL01
 Misc : 5.00g/10mL/100uL/5.00mL/MSVOA_X/MEOH
 ALS Vial : 3 Sample Multiplier: 1

Instrument :
 MSVOA_X
 ClientSampleId :
 VX1002MBL01

Integration Parameters: RTEINT.P

Integrator: RTE
 Smoothing : ON Filtering: 5
 Sampling : 1 Min Area: 3 % of largest Peak
 Start Thrs: 0.2 Max Peaks: 100
 Stop Thrs : 0 Peak Location: TOP

If leading or trailing edge < 100 prefer < Baseline drop else tangent >
 Peak separation: 5

Method : Z:\voasrv\HPCHEM1\MSVOA_X\Method\82X091625W.M
 Title : SW846 8260

Signal : TIC: VX047954.D\data.ms

peak #	R.T. min	first scan	max scan	last scan	PK TY	peak height	corr. area	corr. % max.	% of total
1	5.367	691	702	718	rBV3	84642	275074	33.30%	5.898%
2	5.531	718	729	749	rVB	129370	400283	48.46%	8.582%
3	5.934	785	795	815	rBV	89598	267994	32.45%	5.746%
4	6.739	917	927	949	rBV	239585	624657	75.63%	13.393%
5	8.628	1230	1237	1258	rBV	460221	788847	95.51%	16.914%
6	10.037	1462	1468	1488	rBV	570899	825948	100.00%	17.709%
7	11.061	1631	1636	1651	rBV	410142	569637	68.97%	12.214%
8	11.872	1764	1769	1774	rBV	7645	9103	1.10%	0.195%
9	12.006	1785	1791	1807	rVB	593121	810646	98.15%	17.381%
10	12.317	1837	1842	1848	rVB2	14316	18906	2.29%	0.405%
11	13.268	1994	1998	2003	rVB	7952	10094	1.22%	0.216%
12	13.573	2043	2048	2053	rVB	8911	12349	1.50%	0.265%
13	13.701	2065	2069	2075	rBV3	22834	29544	3.58%	0.633%
14	13.756	2075	2078	2086	rVB2	6922	8593	1.04%	0.184%
15	13.938	2104	2108	2115	rVB2	9271	12299	1.49%	0.264%

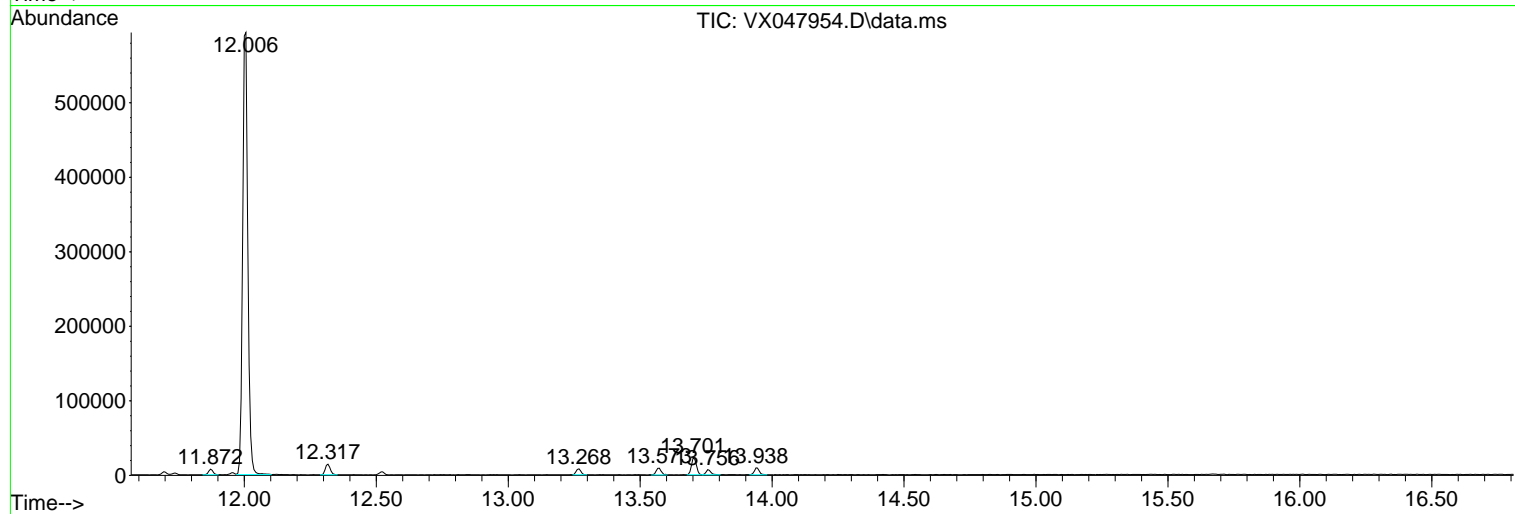
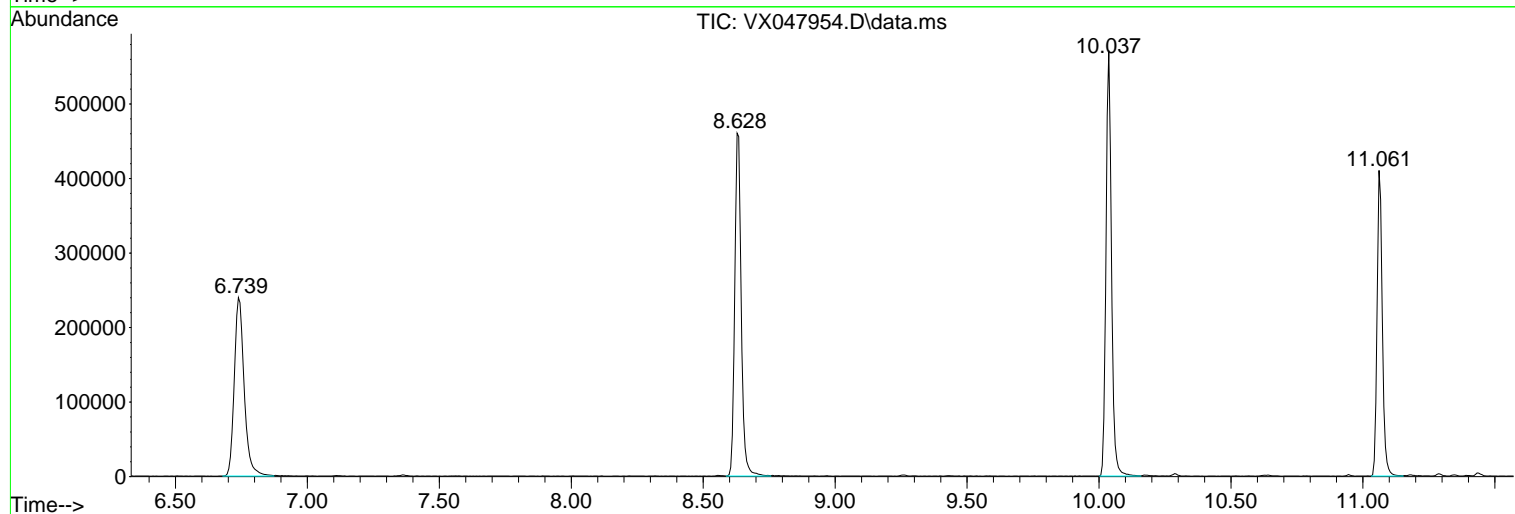
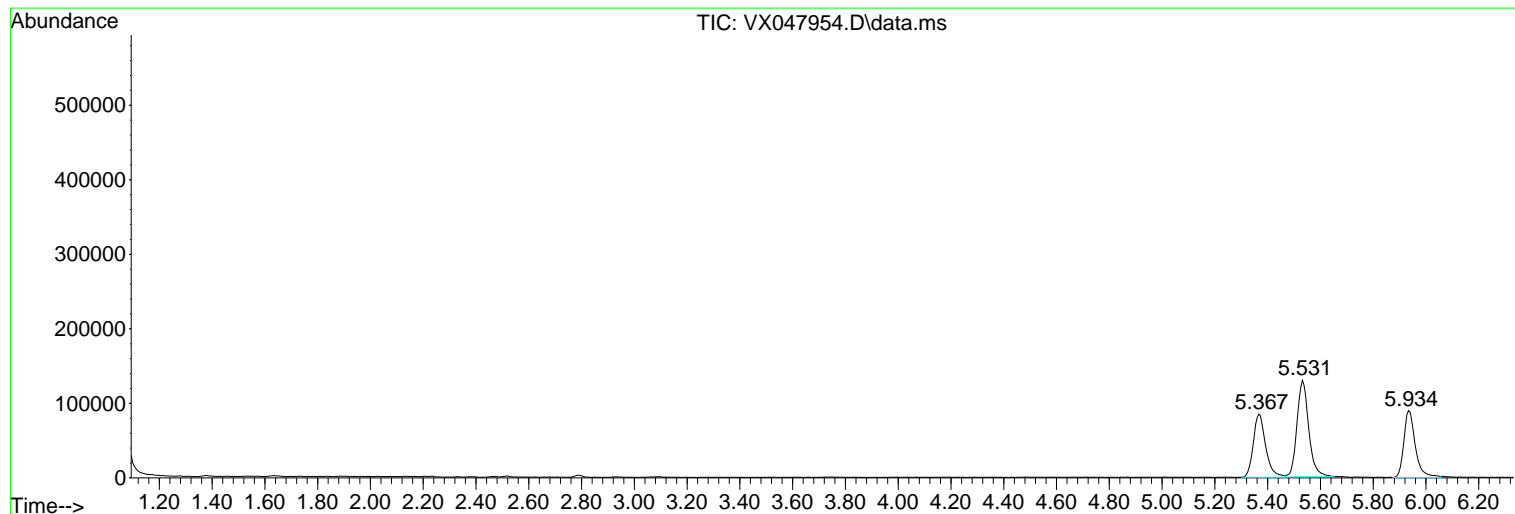
Sum of corrected areas: 4663974

Data Path : Z:\voasrv\HPCHEM1\MSVOA_X\Data\VX100225\
 Data File : VX047954.D
 Acq On : 02 Oct 2025 09:20
 Operator : JC/MD
 Sample : VX1002MBL01
 Misc : 5.00g/10mL/100uL/5.00mL/MSVOA_X/MEOH
 ALS Vial : 3 Sample Multiplier: 1

Instrument :
 MSVOA_X
 ClientSampleId :
 VX1002MBL01

Quant Method : Z:\voasrv\HPCHEM1\MSVOA_X\Method\82X091625W.M
 Quant Title : SW846 8260

TIC Library : C:\Database\NIST20.L
 TIC Integration Parameters: LSCINT.P



Data Path : Z:\voasrv\HPCHEM1\MSVOA_X\Data\VX100225\
Data File : VX047954.D
Acq On : 02 Oct 2025 09:20
Operator : JC/MD
Sample : VX1002MBL01
Misc : 5.00g/10mL/100uL/5.00mL/MSVOA_X/MEOH
ALS Vial : 3 Sample Multiplier: 1

Instrument :
MSVOA_X
ClientSampleId :
VX1002MBL01

Quant Method : Z:\voasrv\HPCHEM1\MSVOA_X\Method\82X091625W.M
Quant Title : SW846 8260

TIC Library : C:\Database\NIST20.L
TIC Integration Parameters: LSCINT.P

No Library Search Compounds Detected

Data Path : Z:\voasrv\HPCHEM1\MSVOA_X\Data\VX100225\
Data File : VX047954.D
Acq On : 02 Oct 2025 09:20
Operator : JC/MD
Sample : VX1002MBL01
Misc : 5.00g/10mL/100uL/5.00mL/MSVOA_X/MEOH
ALS Vial : 3 Sample Multiplier: 1

Instrument :
MSVOA_X
ClientSampleId :
VX1002MBL01

Quant Method : Z:\voasrv\HPCHEM1\MSVOA_X\Method\82X091625W.M
Quant Title : SW846 8260

TIC Library : C:\Database\NIST20.L
TIC Integration Parameters: LSCINT.P

TIC Top Hit name	RT	EstConc	Units	Response	--Internal Standard--			
					#	RT	Resp	Conc
