

Data Path : Z:\voasrv\HPCHEM1\MSVOA_X\Data\VX100225\
 Data File : VX047962.D
 Acq On : 02 Oct 2025 13:07
 Operator : JC/MD
 Sample : Q3246-05
 Misc : 5.0mL/MSVOA_X/WATER
 ALS Vial : 11 Sample Multiplier: 1

Instrument :
 MSVOA_X
 ClientSampleId :
 BP-VPB-184-DUP-20250925

Integration Parameters: RTEINT.P

Integrator: RTE
 Smoothing : ON Filtering: 5
 Sampling : 1 Min Area: 3 % of largest Peak
 Start Thrs: 0.2 Max Peaks: 100
 Stop Thrs : 0 Peak Location: TOP

If leading or trailing edge < 100 prefer < Baseline drop else tangent >
 Peak separation: 5

Method : Z:\voasrv\HPCHEM1\MSVOA_X\Method\82X091625W.M
 Title : SW846 8260

Signal : TIC: VX047962.D\data.ms

| peak # | R.T. min | first scan | max scan | last scan | PK TY | peak height | corr. area | corr. % max. | % of total |
|--------|----------|------------|----------|-----------|-------|-------------|------------|--------------|------------|
| 1 | 1.154 | 8 | 11 | 18 | rVB2 | 7014 | 10673 | 1.13% | 0.206% |
| 2 | 5.379 | 692 | 704 | 720 | rBV | 95883 | 313520 | 33.22% | 6.046% |
| 3 | 5.544 | 720 | 731 | 752 | rVB2 | 134502 | 426657 | 45.21% | 8.227% |
| 4 | 5.946 | 786 | 797 | 823 | rBV2 | 108506 | 321825 | 34.10% | 6.206% |
| 5 | 6.751 | 919 | 929 | 950 | rBV | 260423 | 681380 | 72.20% | 13.139% |
| 6 | 8.635 | 1231 | 1238 | 1255 | rBV | 527712 | 881982 | 93.46% | 17.008% |
| 7 | 10.037 | 1462 | 1468 | 1489 | rBV | 639517 | 931367 | 98.69% | 17.960% |
| 8 | 11.067 | 1631 | 1637 | 1649 | rBV | 497652 | 674636 | 71.49% | 13.009% |
| 9 | 12.006 | 1785 | 1791 | 1805 | rBV | 733241 | 943740 | 100.00% | 18.199% |

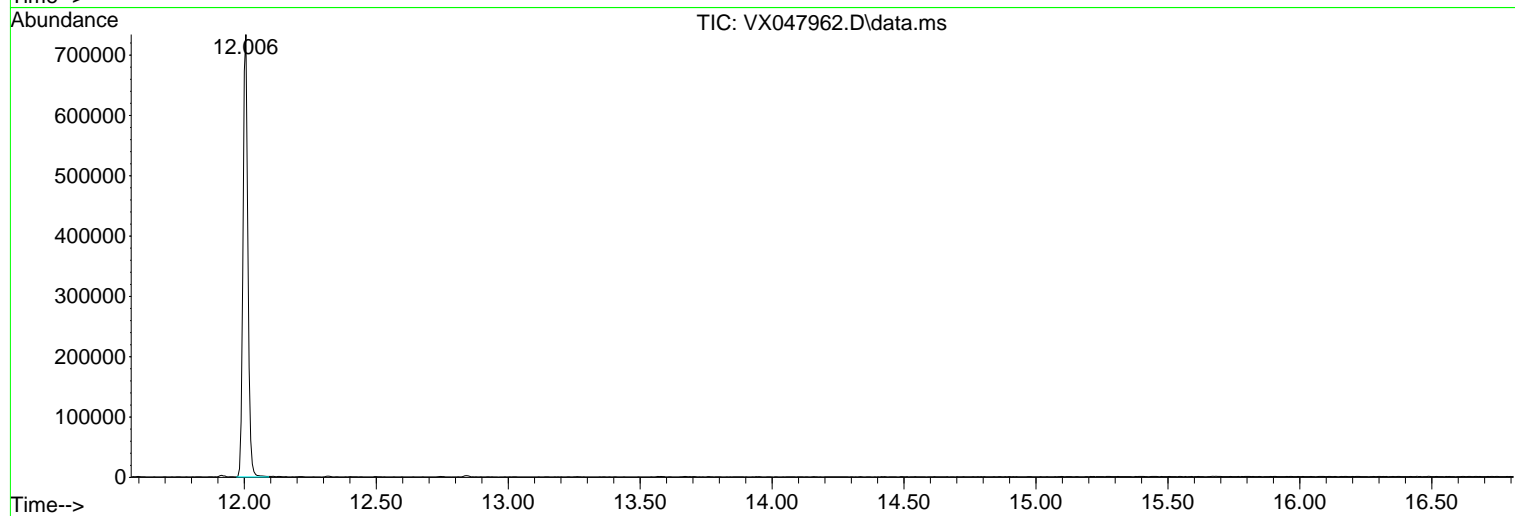
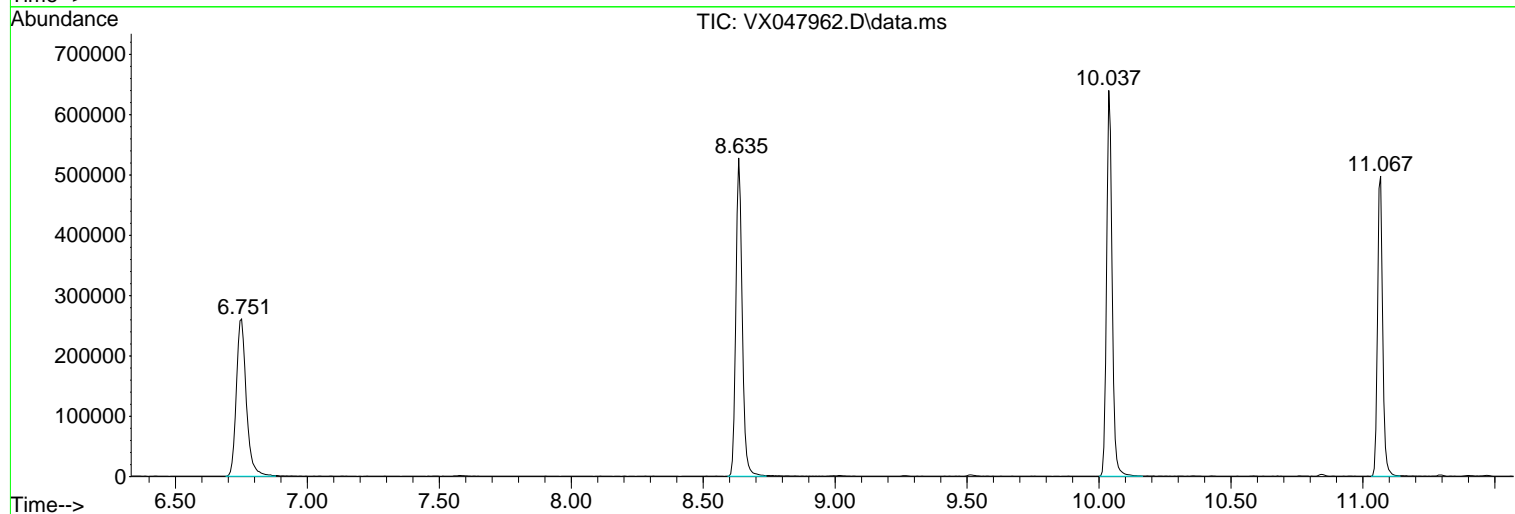
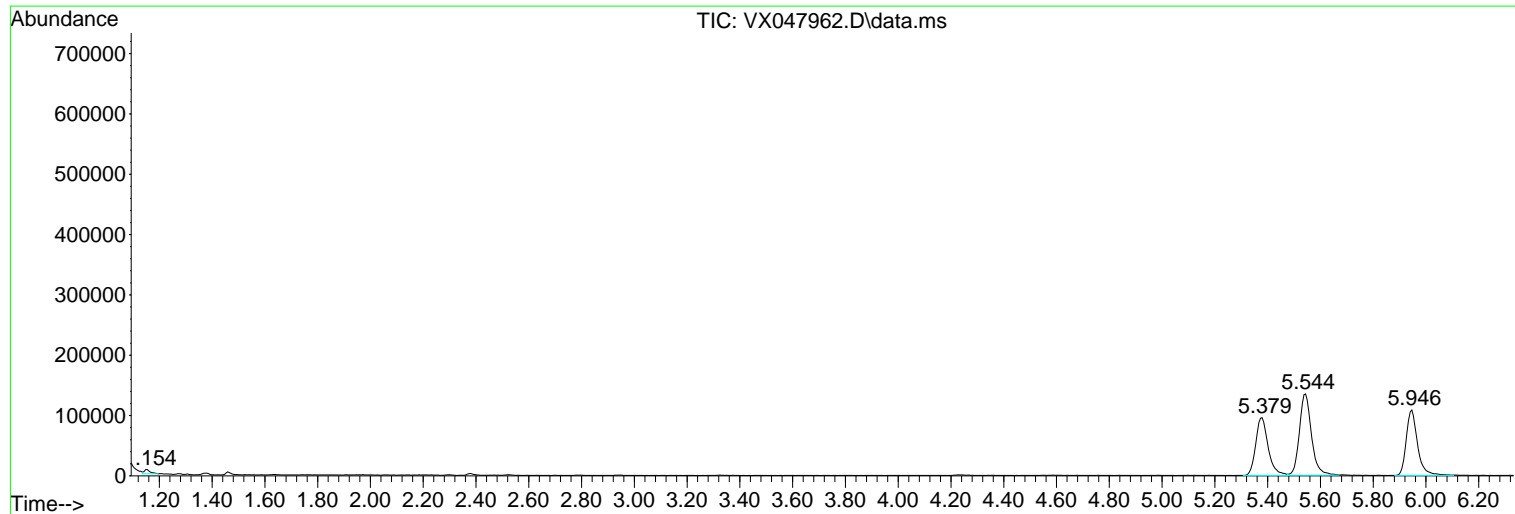
Sum of corrected areas: 5185780

Data Path : Z:\voasrv\HPCHEM1\MSVOA_X\Data\VX100225\
 Data File : VX047962.D
 Acq On : 02 Oct 2025 13:07
 Operator : JC/MD
 Sample : Q3246-05
 Misc : 5.0mL/MSVOA_X/WATER
 ALS Vial : 11 Sample Multiplier: 1

Instrument :
 MSVOA_X
 ClientSampleId :
 BP-VPB-184-DUP-20250925

Quant Method : Z:\voasrv\HPCHEM1\MSVOA_X\Method\82X091625W.M
 Quant Title : SW846 8260

TIC Library : C:\Database\NIST20.L
 TIC Integration Parameters: LSCINT.P



Library Search Compound Report

Data Path : Z:\voasrv\HPCHEM1\MSVOA_X\Data\VX100225\
Data File : VX047962.D
Acq On : 02 Oct 2025 13:07
Operator : JC/MD
Sample : Q3246-05
Misc : 5.0mL/MSVOA_X/WATER
ALS Vial : 11 Sample Multiplier: 1

Instrument :
MSVOA_X
ClientSampleId :
BP-VPB-184-DUP-20250925

Quant Method : Z:\voasrv\HPCHEM1\MSVOA_X\Method\82X091625W.M
Quant Title : SW846 8260

TIC Library : C:\Database\NIST20.L
TIC Integration Parameters: LSCINT.P

No Library Search Compounds Detected

Data Path : Z:\voasrv\HPCHEM1\MSVOA_X\Data\VX100225\
Data File : VX047962.D
Acq On : 02 Oct 2025 13:07
Operator : JC/MD
Sample : Q3246-05
Misc : 5.0mL/MSVOA_X/WATER
ALS Vial : 11 Sample Multiplier: 1

Instrument :
MSVOA_X
ClientSampleId :
BP-VPB-184-DUP-20250925

Quant Method : Z:\voasrv\HPCHEM1\MSVOA_X\Method\82X091625W.M
Quant Title : SW846 8260

TIC Library : C:\Database\NIST20.L
TIC Integration Parameters: LSCINT.P

| TIC Top Hit name | RT | EstConc | Units | Response | --Internal Standard-- | | | |
|------------------|----|---------|-------|----------|-----------------------|----|------|------|
| | | | | | # | RT | Resp | Conc |
